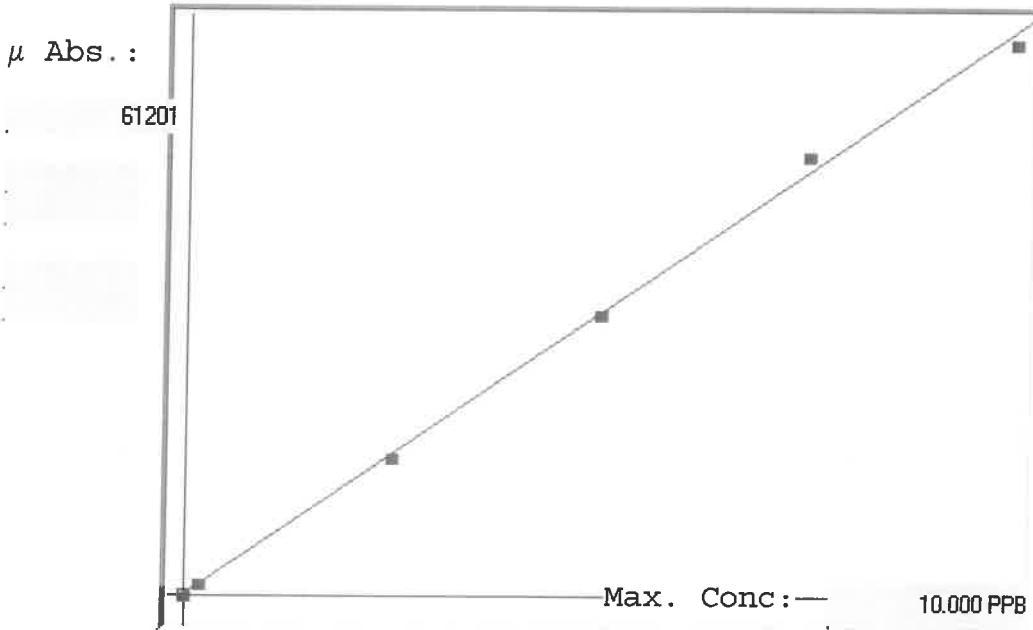


LB134790

7471B

INSTRUMENT ID: CV1

Linear



A= 0.0000e+000

B= 1.6010e-004

C= -1.3762e-002

Rho= 0.9991662

Accept= Accepted

Std ID	Conc.	Calc.	Dev.	Mean	SD or %RSD	Rep 1	Rep 2	Rep 3	Rep 4	Rep 5
0.0	0.000	-0.009	-0.009	32	0.000	32				
0.2	0.200	0.201	0.001	1342	0.0 %	1342				
2.5	2.500	2.431	-0.069	15267	0.0 %	15267				
5.0	5.000	5.001	0.001	31321	0.0 %	31321				
7.5	7.500	7.791	0.291	48751	0.0 %	48751				
10.0	10.000	9.785	-0.215	61201	0.0 %	61201				

0/0D
 1
 3
 0
 4
 -2

LB134790 INSTRUMENT ID : CV1

Method: 7471B

Operator: Admin

Date of Analysis: 24 Feb 2025 13:17:41

Sample ID	Extended ID	μ Abs.	Conc.	Std Conc	Method	Units	Date	Type	Type
0.0 - 1	50	32	-	0.0000	7471B	PPB	24 Feb 2025 13:19:26	S	Std
0.2 - 1	50.2	1342	-	0.2000	7471B	PPB	24 Feb 2025 13:21:42	S	Std
2.5 - 1	52.5	15267	-	2.5000	7471B	PPB	24 Feb 2025 13:23:59	S	Std
5.0 - 1	55	31321	-	5.0000	7471B	PPB	24 Feb 2025 13:26:16	S	Std
7.5 - 1	57.5	48751	-	7.5000	7471B	PPB	24 Feb 2025 13:31:25	S	Std
10.0 - 1	511	61201	-	10.0000	7471B	PPB	24 Feb 2025 13:33:41	S	Std
ICV15 - 1	ICV15	22631	3.6095	-	7471B	PPB	24 Feb 2025 13:37:06	U	SMPL
ICB15 - 1	ICB15	-362	-0.0717	-	7471B	PPB	24 Feb 2025 13:39:21	U	SMPL
CCV12 - 1	CCV12	32270	5.1528	-	7471B	PPB	24 Feb 2025 13:41:38	U	SMPL
CCB12 - 1	CCB12	-531	-0.0988	-	7471B	PPB	24 Feb 2025 13:43:53	U	SMPL
CRA - 1	CRA	1286	0.1921	-	7471B	PPB	24 Feb 2025 13:46:13	U	SMPL
HighStd - 1	HighStd	61386	9.8143	-	7471B	PPB	24 Feb 2025 13:48:28	U	SMPL
ChkStd - 1	ChkStd	43999	7.0306	-	7471B	PPB	24 Feb 2025 13:50:44	U	SMPL
PB166848BL - 1	PB166848BL	-522	-0.0973	-	7471B	PPB	24 Feb 2025 13:53:10	U	SMPL
PB166848BS - 1	PB166848BS	26144	4.1720	-	7471B	PPB	24 Feb 2025 14:00:46	U	SMPL
Q1395-01 - 1	BEL-25-0005	-338	-0.0679	-	7471B	PPB	24 Feb 2025 14:03:04	U	SMPL
Q1398-01 - 1	BUS-DISCONNECT	5741	0.9054	-	7471B	PPB	24 Feb 2025 14:05:23	U	SMPL
Q1398-03 - 1	HANDHOLD	7460	1.1806	-	7471B	PPB	24 Feb 2025 14:07:40	U	SMPL
Q1399-01 - 1	SU-04-02202025	2885	0.4481	-	7471B	PPB	24 Feb 2025 14:09:59	U	SMPL
Q1400-01 - 1	EO-02-02202025	1640	0.2488	-	7471B	PPB	24 Feb 2025 14:12:18	U	SMPL
CCV13 - 1	CCV13	31434	5.0189	-	7471B	PPB	24 Feb 2025 14:14:34	U	SMPL
CCB13 - 1	CCB13	-484	-0.0913	-	7471B	PPB	24 Feb 2025 14:16:50	U	SMPL
Q1411-01 - 1	HR-02-02212025	5179	0.8154	-	7471B	PPB	24 Feb 2025 14:19:08	U	SMPL
Q1411-03 - 1	HR-03-02212025	5153	0.8113	-	7471B	PPB	24 Feb 2025 14:21:24	U	SMPL
Q1412-01 - 1	GAS-FUEL-ISLAND-MAT	259	0.0277	-	7471B	PPB	24 Feb 2025 14:23:41	U	SMPL
Q1413-01 - 1	BU-2-022125	474	0.0621	-	7471B	PPB	24 Feb 2025 14:25:58	U	SMPL
Q1413-01DUP - 1	BU-2-022125DUP	607	0.0834	-	7471B	PPB	24 Feb 2025 14:28:14	U	SMPL
Q1413-01MS - 1	BU-2-022125MS	22620	3.6078	-	7471B	PPB	24 Feb 2025 14:30:30	U	SMPL
Q1413-01MSD - 1	BU-2-022125MSD	20301	3.2365	-	7471B	PPB	24 Feb 2025 14:32:47	U	SMPL
Q1413-01LX5 - 1		-304	-0.0624	-	7471B	PPB	24 Feb 2025 14:35:07	U	SMPL
Q1413-01A - 1		28629	4.5698	-	7471B	PPB	24 Feb 2025 14:42:15	U	SMPL
CCV14 - 1	CCV14	30975	4.9454	-	7471B	PPB	24 Feb 2025 14:44:31	U	SMPL
CCB14 - 1	CCB14	-390	-0.0762	-	7471B	PPB	24 Feb 2025 14:46:50	U	SMPL