

LB 85288

Test results

Aquakem 7.2AQ1

Page: 1

CHEMTECH
284 Sheffield Street,
Mountainside, NJ 07092
Reviewed by : AK

1/11/2017 15:24

Test: CNEPA-NEW

Sample Id	Result	Dil. 1 +	Response	Errors
ICV ICV	95.575	0.0	0.107	
ICB ICB	-1.487	0.0	0.005	
CCV001 CCV001	237.372	0.0	0.256	
CCB001 CCB001	0.724	0.0	0.007	
PB95923BL PBW005	0.609	0.0	0.007	
I1062-01 MDA961	80.750	0.0	0.091	
I1062-02 MDA962	32.802	0.0	0.041	
I1062-03 MDA969	0.822	0.0	0.007	
I1062-04 MDA970	-0.099	0.0	0.007	
I1062-05 MDA973	0.379	0.0	0.007	
I1062-06 MDA963	0.687	0.0	0.007	
I1062-07 MDA967	0.082	0.0	0.007	
I1062-08 MDA972	0.691	0.0	0.007	
I1062-09 MDA964	0.238	0.0	0.007	
I1062-10 MDA968	0.333	0.0	0.007	
I1062-11 MDA971	12.370	0.0	0.020	
I1062-12 MDA974	0.523	0.0	0.007	
I1062-13 MDA974D	0.316	0.0	0.007	
I1062-14 MDA974S	91.340	0.0	0.102	
I1062-15 MDA975	0.597	0.0	0.007	
I1062-01 A	76.977	0.0	0.087	
I1062-01 B	78.637	0.0	0.089	
I1062-02 MDA962	41.069	0.0	0.050	
I1062-02 B	38.482	0.0	0.047	
CCV002 CCV002	249.535	0.0	0.268	
CCB002 CCB002	0.515	0.0	0.007	

N 26
Mean 39.994
SD 68.5671
CV% 171.44

AK
1/11/17

LB 85288

Aquakem v. 7.2AQ1

Results from time period:

AK

Wed Jan 11 14:09:22 2017

Wed Jan 11 15:21:52 2017

Sample Id	Sam/Ctr/c/	Test short	Test type	Result	Result unit	Result date and time
S0.0	A	CNEPA-NE\ P		0.33	µg/l	1/11/2017 14:09:22
S5.0	A	CNEPA-NE\ P		5.116	µg/l	1/11/2017 14:09:23
S10.0	A	CNEPA-NE\ P		9.783	µg/l	1/11/2017 14:09:24
S100.0	A	CNEPA-NE\ P		100.5464	µg/l	1/11/2017 14:09:25
S250.0	A	CNEPA-NE\ P		248.6616	µg/l	1/11/2017 14:09:26
S500.0	A	CNEPA-NE\ P		500.5631	µg/l	1/11/2017 14:09:27
ICV ICV	S	CNEPA-NE\ P		95.5749	µg/l	1/11/2017 14:53:25
ICB ICB	S	CNEPA-NE\ P		-1.4869	µg/l	1/11/2017 14:53:26
CCV001 CCV001	S	CNEPA-NE\ P		237.3718	µg/l	1/11/2017 14:53:27
CCB001 CCB001	S	CNEPA-NE\ P		0.7235	µg/l	1/11/2017 14:53:28
PB95923BL PBW005	S	CNEPA-NE\ P		0.6085	µg/l	1/11/2017 14:53:29
I1062-01 MDA961	S	CNEPA-NE\ P		80.7502	µg/l	1/11/2017 14:53:30
I1062-03 MDA969	S	CNEPA-NE\ P		0.8219	µg/l	1/11/2017 14:53:32
I1062-04 MDA970	S	CNEPA-NE\ P		-0.099	µg/l	1/11/2017 14:53:33
I1062-05 MDA973	S	CNEPA-NE\ P		0.3786	µg/l	1/11/2017 14:53:34
I1062-06 MDA963	S	CNEPA-NE\ P		0.6873	µg/l	1/11/2017 14:53:35
I1062-07 MDA967	S	CNEPA-NE\ P		0.0817	µg/l	1/11/2017 15:00:57
I1062-08 MDA972	S	CNEPA-NE\ P		0.6911	µg/l	1/11/2017 15:00:58
I1062-09 MDA964	S	CNEPA-NE\ P		0.2383	µg/l	1/11/2017 15:00:59
I1062-10 MDA968	S	CNEPA-NE\ P		0.3326	µg/l	1/11/2017 15:01:00
I1062-11 MDA971	S	CNEPA-NE\ P		12.3695	µg/l	1/11/2017 15:01:01
I1062-12 MDA974	S	CNEPA-NE\ P		0.5227	µg/l	1/11/2017 15:01:02
I1062-13 MDA974D	S	CNEPA-NE\ P		0.3158	µg/l	1/11/2017 15:01:03
I1062-14 MDA974S	S	CNEPA-NE\ P		91.3396	µg/l	1/11/2017 15:01:04
I1062-15 MDA975	S	CNEPA-NE\ P		0.5966	µg/l	1/11/2017 15:01:05
I1062-02 MDA962	S	CNEPA-NE\ P		41.0688	µg/l	1/11/2017 15:05:44
CCV002 CCV002	S	CNEPA-NE\ P		249.5353	µg/l	1/11/2017 15:05:46
CCB002 CCB002	S	CNEPA-NE\ P		0.5149	µg/l	1/11/2017 15:05:47

CHEMTECH
 284 Sheffield Street,
 Mountainside, NJ 07092
 Reviewed by : AK

1/11/2017 14:15

Instrument ID : CN

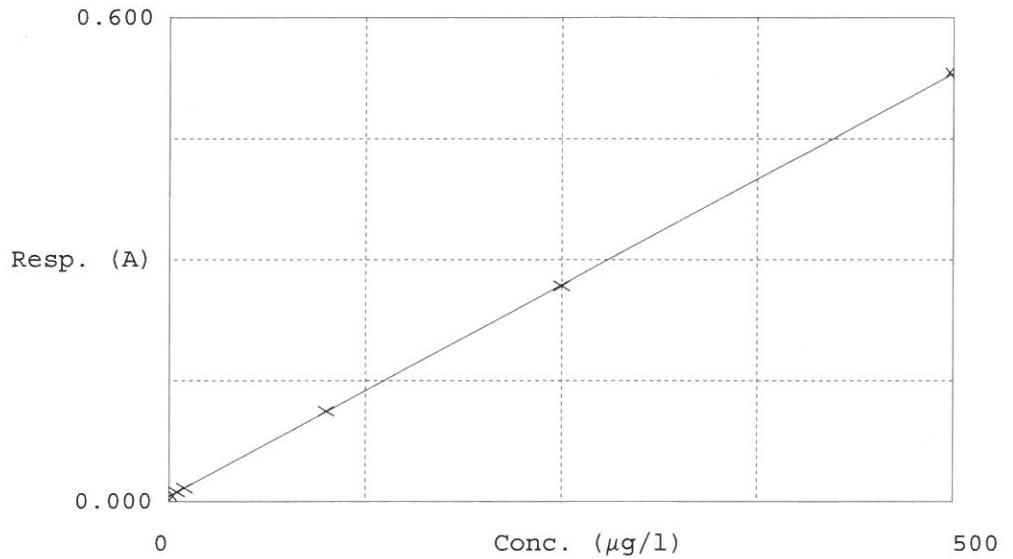
Test CNEPA-NEW

Accepted 1/11/2017 14:15

Factor (slope) 953
 Bias (y-intercept) 0.007

Coeff. of det. 0.999987

Errors



	Calibrator	Response	Calc. con.	Conc.	Errors	Percentage
1	0.0PPBCN S0.0	0.007	0.3300	0.0000		102.32%
2	5.0PPBCN S5.0	0.012	5.1160	5.0000		97.83%
3	10PPBCN S10.0	0.017	9.7830	10.0000		100%
4	100PPBCN S100.0	0.112	100.5464	100.0000		99.2%
5	250PPBCN S250.0	0.268	248.6616	250.0000		100%
6	500PPBCN S500.0	0.532	500.5631	500.0000		

AK
 01/11/17