

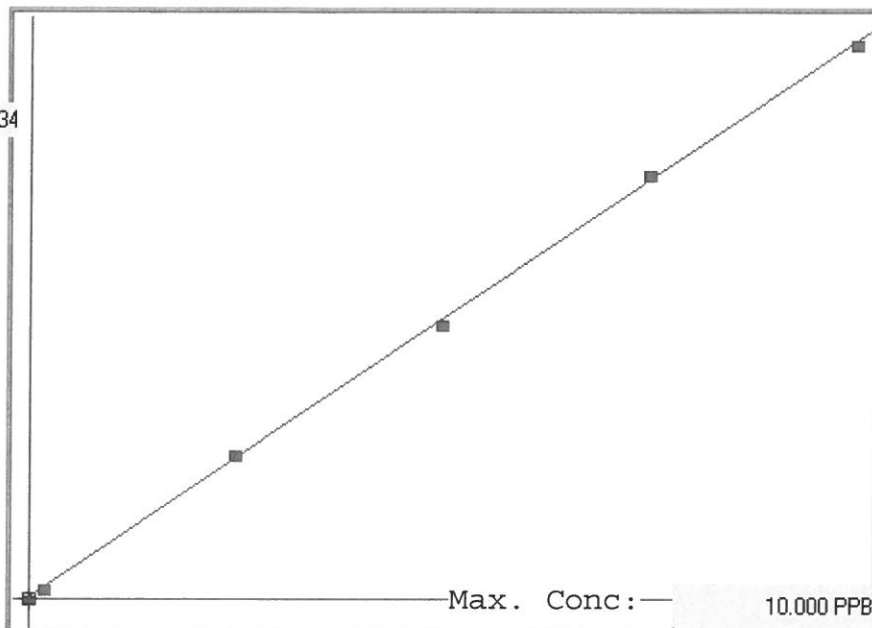
7471A

LB86523
 INSTRUMENT ID: CV1

Linear

μ Abs.:

43634



A= 0.0000e+000

B= 2.2822e-004

C= -2.4126e-002

Rho= 0.9997986

Accept=Accepted

Std ID	Conc.	Calc.	Dev.	Mean	SD or %RSD	Rep 1	Rep 2	Rep 3	Rep 4	Rep 5
0.0	0.000	-0.018	-0.018	27	0.000	27				
0.2	0.200	0.173	-0.027	865	0.0 %	865				
2.5	2.500	2.583	0.083	11424	0.0 %	11424				
5.0	5.000	4.913	-0.087	21633	0.0 %	21633				
7.5	7.500	7.614	0.114	33469	0.0 %	33469				
10.0	10.000	9.934	-0.066	43634	0.0 %	43634				

LB86523 INSTRUMENT ID : CV1

Method: 7471A

Operator: Admin

Date of Analysis: 24 Mar 2017 08:37:14

Sample ID	Extended ID	µ Abs.	Conc.	Std CondMethod	Units	Date	Type	Type
0.0 - 1	50	27	-	0.00007471A	PPB	24 Mar 2017 08:55:50	S	Std
0.2 - 1	50.2	865	-	0.20007471A	PPB	24 Mar 2017 08:58:07	S	Std
2.5 - 1	52.5	11424	-	2.50007471A	PPB	24 Mar 2017 09:00:25	S	Std
5.0 - 1	55	21633	-	5.00007471A	PPB	24 Mar 2017 09:02:42	S	Std
7.5 - 1	57.5	33469	-	7.50007471A	PPB	24 Mar 2017 09:04:59	S	Std
10.0 - 1	510	43634	-	10.00007471A	PPB	24 Mar 2017 09:09:56	S	Std
ICV85 - 1	ICV85	18022	4.0889	-7471A	PPB	24 Mar 2017 09:12:43	U	SMPL
ICB85 - 1	ICB85	-45	-0.0344	-7471A	PPB	24 Mar 2017 09:14:59	U	SMPL
CCV54 - 1	CCV54	22632	5.1410	-7471A	PPB	24 Mar 2017 09:17:14	U	SMPL
CCB54 - 1	CCB54	-62	-0.0383	-7471A	PPB	24 Mar 2017 09:19:30	U	SMPL
CRA - 1	CRA	857	0.1715	-7471A	PPB	24 Mar 2017 09:21:46	U	SMPL
HighStd - 1	HighStd	44142	10.0501	-7471A	PPB	24 Mar 2017 09:24:01	U	SMPL
ChkStd - 1	ChkStd	30851	7.0168	-7471A	PPB	24 Mar 2017 09:26:17	U	SMPL
PB97775BL - 1	PBS	-92	-0.0451	-7471A	PPB	24 Mar 2017 09:28:34	U	SMPL
PB97775BS - 1	LCSS	18188	4.1268	-7471A	PPB	24 Mar 2017 09:30:50	U	SMPL
I2364-01 - 1	WC-COMP-10	5976	1.3397	-7471A	PPB	24 Mar 2017 09:33:07	U	SMPL
I2364-02 - 1	WC-COMP-11	4992	1.1152	-7471A	PPB	24 Mar 2017 09:35:25	U	SMPL
I2364-03 - 1	WC-COMP-12	5276	1.1800	-7471A	PPB	24 Mar 2017 09:37:42	U	SMPL
I2364-03DUP - 1	WC-COMP-12DUP	4855	1.0839	-7471A	PPB	24 Mar 2017 09:40:00	U	SMPL
I2364-03MS - 1	WC-COMP-12MS	21081	4.7871	-7471A	PPB	24 Mar 2017 09:42:15	U	SMPL
CCV55 - 1	CCV55	22563	5.1253	-7471A	PPB	24 Mar 2017 09:44:31	U	SMPL
CCB55 - 1	CCB55	-44	-0.0342	-7471A	PPB	24 Mar 2017 09:46:47	U	SMPL
I2364-03MSD - 1	WC-COMP-12MSD	20919	4.7501	-7471A	PPB	24 Mar 2017 09:49:02	U	SMPL
I2378-02 - 1	53A-9-11	209	0.0236	-7471A	PPB	24 Mar 2017 09:51:18	U	SMPL
I2378-06 - 1	25A-7-9	572	0.1064	-7471A	PPB	24 Mar 2017 09:53:34	U	SMPL
I2379-01 - 1	B-1	13719	3.1069	-7471A	PPB	24 Mar 2017 09:55:50	U	SMPL
I2379-02 - 1	B-2	3205	0.7073	-7471A	PPB	24 Mar 2017 09:58:07	U	SMPL
I2379-03 - 1	B-3	7110	1.5985	-7471A	PPB	24 Mar 2017 10:00:24	U	SMPL
I2379-04 - 1	B-4	425	0.0729	-7471A	PPB	24 Mar 2017 10:02:41	U	SMPL
I2379-05 - 1	B-5	3528	0.7810	-7471A	PPB	24 Mar 2017 10:04:59	U	SMPL
PB97790BL - 1	PBS	8	-0.0223	-7471A	PPB	24 Mar 2017 10:07:16	U	SMPL
PB97790BS - 1	LCSS	15730	3.5658	-7471A	PPB	24 Mar 2017 10:09:33	U	SMPL
CCV56 - 1	CCV56	22634	5.1415	-7471A	PPB	24 Mar 2017 10:11:49	U	SMPL
CCB56 - 1	CCB56	-40	-0.0333	-7471A	PPB	24 Mar 2017 10:14:05	U	SMPL
I2367-01 - 1	E2-B4567	4637	1.0341	-7471A	PPB	24 Mar 2017 10:16:21	U	SMPL
I2367-02 - 1	E2-R14-BASE	56661	12.9073	-7471A	PPB	24 Mar 2017 10:18:38	U	SMPL
I2367-03 - 1	E2-R14-SSW	57991	13.2108	-7471A	PPB	24 Mar 2017 10:20:54	U	SMPL
I2367-04 - 1	E2-R14-ESW	85583	19.5080	-7471A	PPB	24 Mar 2017 10:23:10	U	SMPL
I2367-05 - 1	E2-R15-SSW	20358	4.6221	-7471A	PPB	24 Mar 2017 10:25:27	U	SMPL
I2367-06 - 1	E2-CC10-SSW	79384	18.0932	-7471A	PPB	24 Mar 2017 10:27:45	U	SMPL
I2367-07 - 1	E2-CC9-WSW	863337	HIGH	-7471A	PPB	24 Mar 2017 10:30:02	X	
I2367-08 - 1	E2-BB10-NSW	14613	3.3109	-7471A	PPB	24 Mar 2017 10:31:53	U	SMPL
I2367-09 - 1	E2-CC10-BASE	4245	0.9447	-7471A	PPB	24 Mar 2017 10:34:17	U	SMPL
I2367-10 - 1	E2-CC10-ESW	2584	0.5656	-7471A	PPB	24 Mar 2017 10:36:33	U	SMPL
CCV57 - 1	CCV57	22809	5.1814	-7471A	PPB	24 Mar 2017 10:38:50	U	SMPL
CCB57 - 1	CCB57	-40	-0.0333	-7471A	PPB	24 Mar 2017 10:41:06	U	SMPL
I2367-11 - 1	E2-P14-NSW	1605	0.3422	-7471A	PPB	24 Mar 2017 10:43:22	U	SMPL
I2367-12 - 1	E2-R13-WSW	22634	5.1415	-7471A	PPB	24 Mar 2017 10:45:39	U	SMPL
I2367-13 - 1	E2-R13-SSW	92171	21.0115	-7471A	PPB	24 Mar 2017 10:47:55	U	SMPL
I2367-15 - 1	E2-CC9-BASE	14918	3.3805	-7471A	PPB	24 Mar 2017 10:50:12	U	SMPL
I2367-16 - 1	E2-CC-DD-9-10-BASE	283491	64.6754	-7471A	PPB	24 Mar 2017 10:52:29	U	SMPL
I2367-16DUP - 1	E2-CC-DD-9-10-BASEDUP	243048	55.4453	-7471A	PPB	24 Mar 2017 10:54:46	U	SMPL
I2367-16MS - 1	E2-CC-DD-9-10-BASEMS	295008	67.3039	-7471A	PPB	24 Mar 2017 10:57:05	U	SMPL
I2367-16MSD - 1	E2-CC-DD-9-10-BASEMSD	313832	71.5999	-7471A	PPB	24 Mar 2017 11:02:20	U	SMPL
I2367-17 - 1	E2-CC-DD-8-9-BASE	4420	0.9846	-7471A	PPB	24 Mar 2017 11:04:38	U	SMPL
I2367-18 - 1	E2-CC-DD-7-8-BASE	48548	11.0557	-7471A	PPB	24 Mar 2017 11:06:57	U	SMPL
CCV58 - 1	CCV58	21962	4.9881	-7471A	PPB	24 Mar 2017 11:09:13	U	SMPL
CCB58 - 1	CCB58	-54	-0.0365	-7471A	PPB	24 Mar 2017 11:11:29	U	SMPL
I2367-19 - 1	E2-DD10-SSW	220127	50.2142	-7471A	PPB	24 Mar 2017 11:13:46	U	SMPL
I2367-20 - 1	E2-CC8-BASE	145118	33.0953	-7471A	PPB	24 Mar 2017 11:16:02	U	SMPL
I2367-21 - 1	E2-DD10-BASE	261938	59.7565	-7471A	PPB	24 Mar 2017 11:18:21	U	SMPL
I2367-22 - 1	E2-DD10-ESW	45109	10.2708	-7471A	PPB	24 Mar 2017 11:20:39	U	SMPL
I2364-03LX5 - 1		909	0.1833	-7471A	PPB	24 Mar 2017 11:22:58	U	SMPL
I2364-03A - 1		23191	5.2686	-7471A	PPB	24 Mar 2017 11:25:15	U	SMPL
I2367-16LX5 - 1		59581	13.5737	-7471A	PPB	24 Mar 2017 11:27:33	U	SMPL
I2367-16A - 1		297019	67.7628	-7471A	PPB	24 Mar 2017 11:36:31	U	SMPL
CCV59 - 1	CCV59	21371	4.8533	-7471A	PPB	24 Mar 2017 11:44:05	U	SMPL
CCB59 - 1	CCB59	-65	-0.0390	-7471A	PPB	24 Mar 2017 11:46:24	U	SMPL
I2367-02DLX5 - 1		10948	2.4745	-7471A	PPB	24 Mar 2017 11:48:41	U	SMPL
I2367-03DLX5 - 1		11556	2.6132	-7471A	PPB	24 Mar 2017 11:50:57	U	SMPL
I2367-04DLX5 - 1		17081	3.8742	-7471A	PPB	24 Mar 2017 11:53:14	U	SMPL
I2367-06DLX5 - 1		15786	3.5786	-7471A	PPB	24 Mar 2017 11:55:31	U	SMPL
I2367-07DLX10 - 1		180820	41.2434	-7471A	PPB	24 Mar 2017 11:57:48	U	SMPL
I2367-13DLX5 - 1		18239	4.1385	-7471A	PPB	24 Mar 2017 12:00:04	U	SMPL
I2367-16DLX10 - 1		30850	7.0166	-7471A	PPB	24 Mar 2017 12:02:23	U	SMPL
I2367-16DUPDLX10 - 1		26960	6.1288	-7471A	PPB	24 Mar 2017 12:04:40	U	SMPL
I2367-16MSDLX10 - 1		32830	7.4685	-7471A	PPB	24 Mar 2017 12:06:57	U	SMPL
I2367-16MSDDLX10 - 1		32928	7.4908	-7471A	PPB	24 Mar 2017 12:09:14	U	SMPL
CCV60 - 1	CCV60	22729	5.1632	-7471A	PPB	24 Mar 2017 12:11:32	U	SMPL
CCB60 - 1	CCB60	-27	-0.0303	-7471A	PPB	24 Mar 2017 12:13:49	U	SMPL
I2367-16LDLX50 - 1		6177	1.3856	-7471A	PPB	24 Mar 2017 12:16:06	U	SMPL
I2367-16ADLX10 - 1		32590	7.4137	-7471A	PPB	24 Mar 2017 12:24:32	U	SMPL
I2367-18DLX5 - 1		9175	2.0698	-7471A	PPB	24 Mar 2017 12:26:49	U	SMPL
I2367-19DLX10 - 1		22383	5.0842	-7471A	PPB	24 Mar 2017 12:29:06	U	SMPL
I2367-20DLX5 - 1		29143	6.6270	-7471A	PPB	24 Mar 2017 12:31:23	U	SMPL
I2367-21DLX10 - 1		26781	6.0879	-7471A	PPB	24 Mar 2017 12:33:40	U	SMPL
I2367-22DLX2 - 1		22668	5.1493	-7471A	PPB	24 Mar 2017 12:35:56	U	SMPL
I2367-07DL2X100 - 1		18022	4.0889	-7471A	PPB	24 Mar 2017 12:38:13	U	SMPL
CCV61 - 1	CCV61	22068	5.0123	-7471A	PPB	24 Mar 2017 12:40:31	U	SMPL
CCB61 - 1	CCB61	-17	-0.0280	-7471A	PPB	24 Mar 2017 12:42:48	U	SMPL