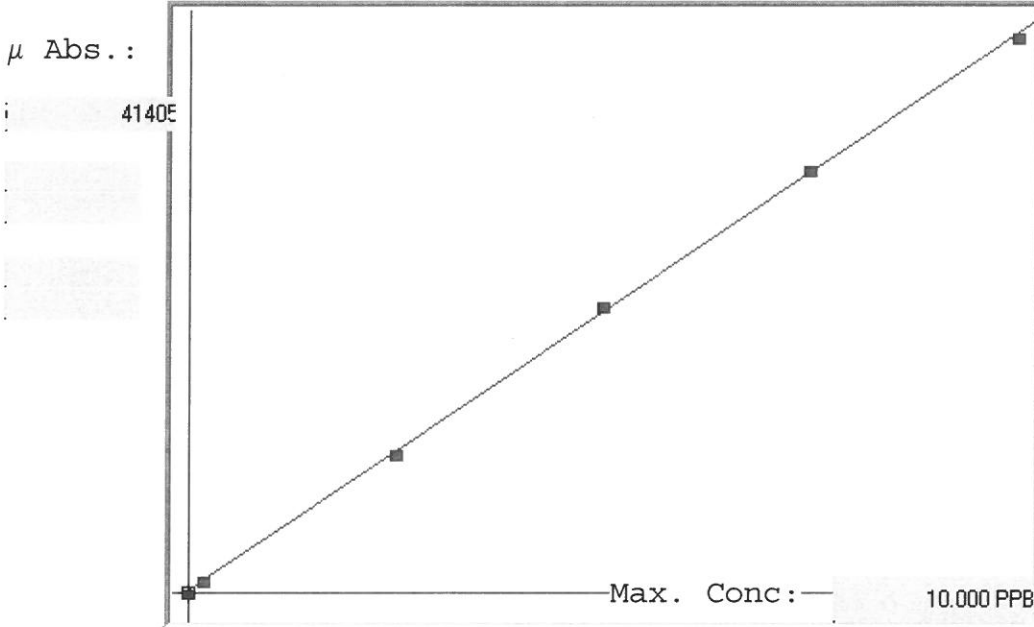


ISM02.4

LB95279
 INSTRUMENT ID: CV1

Linear



A= 0.0000e+000
 B= 2.4034e-004 *slope*
 C= -3.3410e-002 *y-intercept*
 Rho= 0.9998630
 Accept=Accepted

Std ID	Conc.	Calc.	Dev.	Mean	SD or %RSD	Rep 1	Rep 2	Rep 3	Rep 4	Rep 5	<i>0/0D</i>
0.00	0.000	-0.023	-0.023	44	0.000	44					-
0.2	0.200	0.195	-0.005	949	0.0 %	949					-3
2.5	2.500	2.455	-0.045	10354	0.0 %	10354					-2
5.0	5.000	5.101	0.101	21362	0.0 %	21362					2
7.5	7.500	7.554	0.054	31570	0.0 %	31570					1
10.0	10.000	9.918	-0.082	41405	0.0 %	41405					-1

*n=3
 5/10/18*

INSTRUMENT ID : CV1

Sample ID	Extended ID	μ Abs.	Conc.	Std Conc	Method	Units	Date	Type
	0 S0.0	44	-	0	ISM02.4	PPB	5/10/2018 19:47	Std
	0.2 S0.2	949	-	0.2	ISM02.4	PPB	5/10/2018 19:49	Std
	2.5 S2.5	10354	-	2.5	ISM02.4	PPB	5/10/2018 19:51	Std
	5 S5	21362	-	5	ISM02.4	PPB	5/10/2018 19:54	Std
	7.5 S7.5	31570	-	7.5	ISM02.4	PPB	5/10/2018 19:56	Std
	10 S10.0	41405	-	10	ISM02.4	PPB	5/10/2018 19:58	Std
ICV	ICV	16089	3.8335 -		ISM02.4	PPB	5/10/2018 20:01	SMPL
ICB	ICB	-83	-0.0534 -		ISM02.4	PPB	5/10/2018 20:03	SMPL
CCV097	CCV097	21271	5.0789 -		ISM02.4	PPB	5/10/2018 20:06	SMPL
CCB097	CCB097	-121	-0.0625 -		ISM02.4	PPB	5/10/2018 20:08	SMPL
PB109137BL	PBW003	14	-0.03 -		ISM02.4	PPB	5/10/2018 20:10	SMPL
J2841-01	MC0AA0	-90	-0.055 -		ISM02.4	PPB	5/10/2018 20:12	SMPL
J2841-02	MC0AA1	-141	-0.0673 -		ISM02.4	PPB	5/10/2018 20:15	SMPL
J2841-03	MC0AA2	-136	-0.0661 -		ISM02.4	PPB	5/10/2018 20:17	SMPL
J2841-04	MC0AA2D	-107	-0.0591 -		ISM02.4	PPB	5/10/2018 20:19	SMPL
J2841-05	MC0AA2S	3941	0.9138 -		ISM02.4	PPB	5/10/2018 20:21	SMPL
J2841-06	MC0AA3	-106	-0.0589 -		ISM02.4	PPB	5/10/2018 20:24	SMPL
CCV098	CCV098	21199	5.0616 -		ISM02.4	PPB	5/10/2018 20:26	SMPL
CCB098	CCB098	-99	-0.0572 -		ISM02.4	PPB	5/10/2018 20:28	SMPL