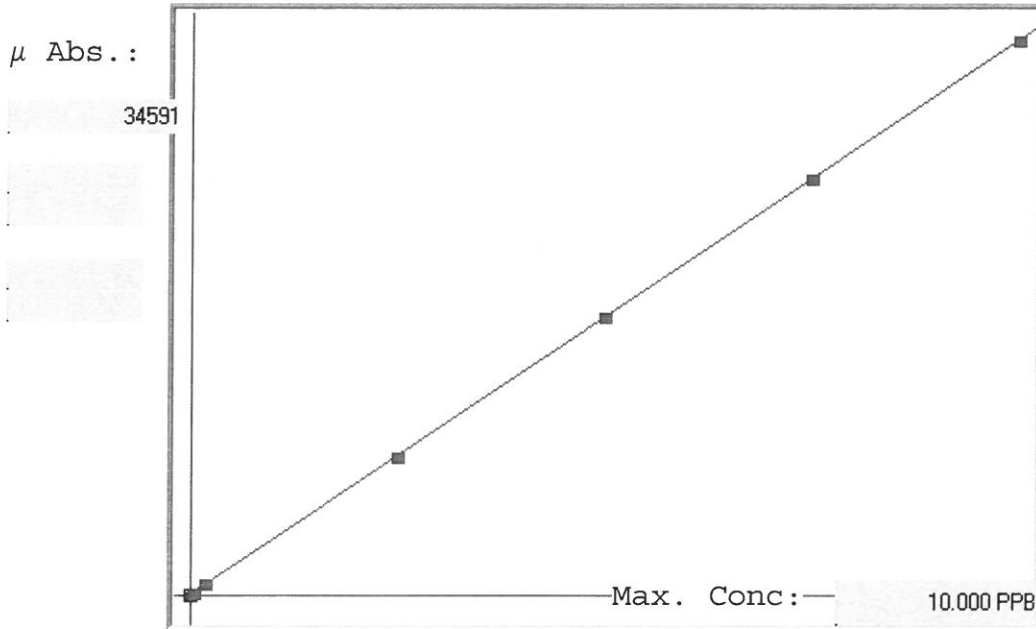


LB95853

245.1

INSTRUMENT ID: CV1

Linear



A= 0.0000e+000

B= 2.8902e-004

C= -1.6992e-002

Rho= 0.9999926

Accept = Accepted

Std ID	Conc.	Calc.	Dev.	Mean	SD or %RSD	Rep 1	Rep 2	Rep 3	Rep 4	Rep 5
0.0	0.000	-0.003	-0.003	50	0.000	50				
0.05	0.050	0.041	-0.009	200	0.0 %	200				
0.2	0.200	0.196	-0.004	738	0.0 %	738				
2.5	2.500	2.498	-0.002	8703	0.0 %	8703				
5.0	5.000	5.030	0.030	17463	0.0 %	17463				
7.5	7.500	7.506	0.006	26030	0.0 %	26030				
10.0	10.000	9.981	-0.019	34591	0.0 %	34591				

LB95853 INSTRUMENT ID : CV1

Method: 245.1

Operator: Admin

Date of Analysis: 06 Jun 2018 16:56:44

Sample ID	Extended ID	µ Abs.	Conc.	Std Conc	Method	Units	Date	Type	Type
0.0 - 1	50	50	-	0.0000	245.1	PPB	06 Jun 2018 17:01:30	S	Std
0.05 - 1	50.05	200	-	0.0500	245.1	PPB	06 Jun 2018 17:03:38	S	Std
0.2 - 1	50.2	738	-	0.2000	245.1	PPB	06 Jun 2018 17:05:46	S	Std
2.5 - 1	52.5	8703	-	2.5000	245.1	PPB	06 Jun 2018 17:07:55	S	Std
5.0 - 1	55	17463	-	5.0000	245.1	PPB	06 Jun 2018 17:10:02	S	Std
7.5 - 1	57.5	26030	-	7.5000	245.1	PPB	06 Jun 2018 17:12:09	S	Std
10.0 - 1	510	34591	-	10.0000	245.1	PPB	06 Jun 2018 17:14:18	S	Std
ICV87 - 1	ICV87	13376	3.8490	-245.1		PPB	06 Jun 2018 17:18:59	U	SMPL
ICB87 - 1	ICB87	-56	-0.0332	-245.1		PPB	06 Jun 2018 17:21:05	U	SMPL
CCV68 - 1	CCV68	17808	5.1299	-245.1		PPB	06 Jun 2018 17:23:13	U	SMPL
CCB68 - 1	CCB68	-102	-0.0465	-245.1		PPB	06 Jun 2018 17:25:19	U	SMPL
CRA - 1	CRA	230	0.0495	-245.1		PPB	06 Jun 2018 17:27:27	U	SMPL
HighStd - 1	HighStd	35132	10.1369	-245.1		PPB	06 Jun 2018 17:29:34	U	SMPL
ChkStd - 1	ChkStd	24504	7.0652	-245.1		PPB	06 Jun 2018 17:31:40	U	SMPL
PB110022BL - 1	PBW	-163	-0.0641	-245.1		PPB	06 Jun 2018 17:33:49	U	SMPL
PB110022BS - 1	LCSW	13923	4.0071	-245.1		PPB	06 Jun 2018 17:35:58	U	SMPL
J3321-01 - 1	060118-JETT-F-D-B	-29	-0.0254	-245.1		PPB	06 Jun 2018 17:38:06	U	SMPL
J3321-02 - 1	060118-JETT-F-D-M	71	0.0035	-245.1		PPB	06 Jun 2018 17:40:14	U	SMPL
J3321-03 - 1	060118-JETT-F-D-S	38	-0.0060	-245.1		PPB	06 Jun 2018 17:42:22	U	SMPL
J3321-04 - 1	060118-JETT-F-U-B	60	0.0003	-245.1		PPB	06 Jun 2018 17:44:31	U	SMPL
J3321-05 - 1	060118-JETT-F-U-M	108	0.0142	-245.1		PPB	06 Jun 2018 17:46:38	U	SMPL
CCV69 - 1	CCV69	17663	5.0880	-245.1		PPB	06 Jun 2018 17:48:44	U	SMPL
CCB69 - 1	CCB69	-85	-0.0416	-245.1		PPB	06 Jun 2018 17:50:51	U	SMPL
J3321-06 - 1	060118-JETT-F-U-S	68	0.0027	-245.1		PPB	06 Jun 2018 17:52:58	U	SMPL
J3323-01 - 1	060418-JETT-E-D-B	73	0.0041	-245.1		PPB	06 Jun 2018 17:55:05	U	SMPL
J3323-02 - 1	060418-JETT-E-D-M	62	0.0009	-245.1		PPB	06 Jun 2018 17:57:12	U	SMPL
J3323-03 - 1	060418-JETT-E-D-S	62	0.0009	-245.1		PPB	06 Jun 2018 17:59:19	U	SMPL
J3323-04 - 1	060418-JETT-E-U-B	82	0.0067	-245.1		PPB	06 Jun 2018 18:01:26	U	SMPL
J3323-05 - 1	060418-JETT-E-U-M	88	0.0084	-245.1		PPB	06 Jun 2018 18:03:34	U	SMPL
J3323-06 - 1	060418-JETT-E-U-S	86	0.0079	-245.1		PPB	06 Jun 2018 18:05:41	U	SMPL
J3323-07 - 1	060418-DBRI-E-D-B	86	0.0079	-245.1		PPB	06 Jun 2018 18:07:50	U	SMPL
J3323-08 - 1	060418-DBRI-E-D-S	65	0.0018	-245.1		PPB	06 Jun 2018 18:09:59	U	SMPL
J3323-09 - 1	060418-DBRI-E-U-B	74	0.0044	-245.1		PPB	06 Jun 2018 18:12:06	U	SMPL
CCV70 - 1	CCV70	17343	4.9955	-245.1		PPB	06 Jun 2018 18:14:13	U	SMPL
CCB70 - 1	CCB70	-65	-0.0358	-245.1		PPB	06 Jun 2018 18:16:20	U	SMPL
J3323-10 - 1	060418-DBRI-E-U-S	52	-0.0020	-245.1		PPB	06 Jun 2018 18:18:28	U	SMPL
J3323-10DUP - 1	060418-DBRI-E-U-SDUP	102	0.0125	-245.1		PPB	06 Jun 2018 18:20:35	U	SMPL
J3323-10MS - 1	060418-DBRI-E-U-SMS	15834	4.5594	-245.1		PPB	06 Jun 2018 18:22:42	U	SMPL
J3323-10MSD - 1	060418-DBRI-E-U-SMSD	15924	4.5854	-245.1		PPB	06 Jun 2018 18:24:49	U	SMPL
J3323-10LX5 - 1		-52	-0.0320	-245.1		PPB	06 Jun 2018 18:26:57	U	SMPL
J3323-10A - 1		16007	4.6094	-245.1		PPB	06 Jun 2018 18:29:04	U	SMPL
CCV71 - 1	CCV71	17358	4.9999	-245.1		PPB	06 Jun 2018 18:31:12	U	SMPL
CCB71 - 1	CCB71	-130	-0.0546	-245.1		PPB	06 Jun 2018 18:33:20	U	SMPL