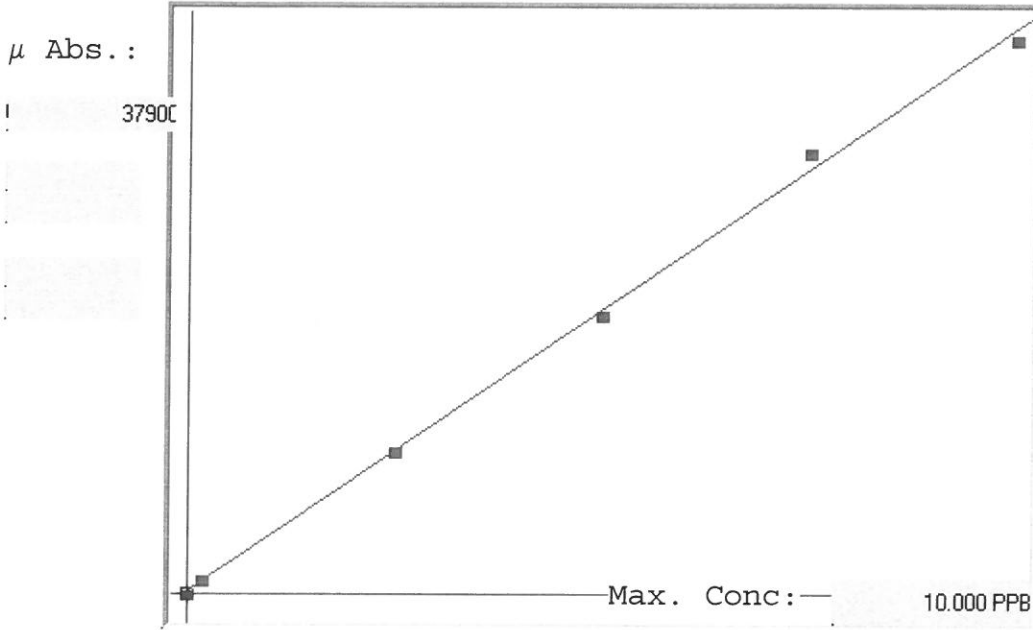


7470A

LB 96713

INSTRUMENT ID: CV2

Linear



A= 0.0000e+000

B= 2.5975e-004

C= -4.1762e-002

Rho= 0.9991339

Accept=Accepted

Std ID	Conc.	Calc.	Dev.	Mean	SD or %RSD	Rep 1	Rep 2	Rep 3	Rep 4	Rep 5
0.0	0.000	-0.022	-0.022	76	0.000	76				
0.2	0.200	0.203	0.003	943	0.0 %	943				
2.5	2.500	2.505	0.005	9805	0.0 %	9805				
5.0	5.000	4.906	-0.094	19048	0.0 %	19048				
7.5	7.500	7.805	0.305	30210	0.0 %	30210				
10.0	10.000	9.803	-0.197	37900	0.0 %	37900				

LB96713 INSTRUMENT ID : CV1

Method: 7470A

Operator: Admin

Date of Analysis: 18 Jul 2018 08:09:04

Sample ID	Extended ID	µ Abs.	Conc.	Std ConcMethod	Units	Date	Type	Type
0.0 - 1	S0	76	-	0.00007470A	PPB	18 Jul 2018 08:14:12	S	Std
0.2 - 1	S02	943	-	0.20007470A	PPB	18 Jul 2018 08:16:20	S	Std
2.5 - 1	S2.5	9805	-	2.50007470A	PPB	18 Jul 2018 08:18:28	S	Std
5.0 - 1	S5	19048	-	5.00007470A	PPB	18 Jul 2018 08:20:37	S	Std
7.5 - 1	S7.5	30210	-	7.50007470A	PPB	18 Jul 2018 08:22:44	S	Std
10.0 - 1	S10	37900	-	10.00007470A	PPB	18 Jul 2018 08:24:52	S	Std
ICV57 - 1	ICV57	15377	3.9524	-7470A	PPB	18 Jul 2018 08:27:29	U	SMPL
ICB57 - 1	ICB57	-69	-0.0597	-7470A	PPB	18 Jul 2018 08:29:35	U	SMPL
CCV20 - 1	CCV20	18952	4.8810	-7470A	PPB	18 Jul 2018 08:31:42	U	SMPL
CCB20 - 1	CCB20	-78	-0.0620	-7470A	PPB	18 Jul 2018 08:33:49	U	SMPL
CRA - 1	CRA	904	0.1930	-7470A	PPB	18 Jul 2018 08:35:56	U	SMPL
HighStd - 1	HighStd	38081	9.8497	-7470A	PPB	18 Jul 2018 08:38:03	U	SMPL
ChkStd - 1	ChkStd	28295	7.3078	-7470A	PPB	18 Jul 2018 08:40:10	U	SMPL
PB111207BL - 1	PBW	-73	-0.0607	-7470A	PPB	18 Jul 2018 08:42:18	U	SMPL
PB111207BS - 1	LCSW	13552	3.4783	-7470A	PPB	18 Jul 2018 08:44:27	U	SMPL
PB111207TB - 1	PB111172TB	-15	-0.0457	-7470A	PPB	18 Jul 2018 08:46:35	U	SMPL
J3826-04 - 1	OK-01-071618	61	-0.0259	-7470A	PPB	18 Jul 2018 08:48:43	U	SMPL
J3826-04DUP - 1	OK-01-071618DUP	67	-0.0244	-7470A	PPB	18 Jul 2018 08:50:51	U	SMPL
J3826-04MS - 1	OK-01-071618MS	15639	4.0204	-7470A	PPB	18 Jul 2018 08:55:30	U	SMPL
J3826-04MSD - 1	OK-01-071618MSD	14766	3.7937	-7470A	PPB	18 Jul 2018 08:59:29	U	SMPL
CCV21 - 1	CCV21	18751	4.8288	-7470A	PPB	18 Jul 2018 09:01:35	U	SMPL
CCB21 - 1	CCB21	-80	-0.0625	-7470A	PPB	18 Jul 2018 09:03:42	U	SMPL
J3832-04 - 1	TR-04-071618	59	-0.0264	-7470A	PPB	18 Jul 2018 09:05:49	U	SMPL
J4012-03 - 1	FS-RT-4917	77	-0.0218	-7470A	PPB	18 Jul 2018 09:07:56	U	SMPL
J4013-02 - 1	TP-I-S	54	-0.0277	-7470A	PPB	18 Jul 2018 09:10:02	U	SMPL
J4013-06 - 1	TP-I-D	28	-0.0345	-7470A	PPB	18 Jul 2018 09:12:09	U	SMPL
PB111208BL - 1	PBW	47	-0.0296	-7470A	PPB	18 Jul 2018 09:14:17	U	SMPL
PB111208BS - 1	LCSW	14229	3.6542	-7470A	PPB	18 Jul 2018 09:19:29	U	SMPL
PB111208TB - 1	PB111178TB	49	-0.0290	-7470A	PPB	18 Jul 2018 09:21:37	U	SMPL
J4006-02 - 1	RR-BASELINE-WATER	131	-0.0077	-7470A	PPB	18 Jul 2018 09:23:45	U	SMPL
J4006-02DUP - 1	RR-BASELINE-WATERDUP	215	0.0141	-7470A	PPB	18 Jul 2018 09:25:54	U	SMPL
J4006-02MS - 1	RR-BASELINE-WATERMS	15090	3.8778	-7470A	PPB	18 Jul 2018 09:28:01	U	SMPL
CCV22 - 1	CCV22	18960	4.8830	-7470A	PPB	18 Jul 2018 09:30:08	U	SMPL
CCB22 - 1	CCB22	-65	-0.0586	-7470A	PPB	18 Jul 2018 09:32:15	U	SMPL
J4006-02MSD - 1	RR-BASELINE-WATERMSD	14937	3.8381	-7470A	PPB	18 Jul 2018 09:34:23	U	SMPL
J4008-02 - 1	KG-FM1026	-10	-0.0444	-7470A	PPB	18 Jul 2018 09:36:30	U	SMPL
J3826-04LX5 - 1		34	-0.0329	-7470A	PPB	18 Jul 2018 09:38:36	U	SMPL
J3826-04A - 1		14634	3.7594	-7470A	PPB	18 Jul 2018 09:40:43	U	SMPL
J4006-02LX5 - 1		-40	-0.0522	-7470A	PPB	18 Jul 2018 09:42:51	U	SMPL
J4006-02A - 1		14340	3.6830	-7470A	PPB	18 Jul 2018 09:44:58	U	SMPL
CCV23 - 1	CCV23	18801	4.8417	-7470A	PPB	18 Jul 2018 09:47:07	U	SMPL
CCB23 - 1	CCB23	-64	-0.0584	-7470A	PPB	18 Jul 2018 09:49:15	U	SMPL