

LB98090

Test results

Aquakem 7.2AQ1

Page: 1

CHEMTECH
284 Sheffield Street,
Mountainside, NJ 07092
Reviewed by : AS

9/21/2018 14:44

Test: Total CN

Sample Id	Result ^{Mg/L}	Dil. 1 +	Response	Errors
ICV1	96.858	0.0	0.088	
ICB1	-0.352	0.0	0.004	
CCV1	243.584	0.0	0.215	
CCB1	-0.420	0.0	0.004	
PB113110BL	-0.769	0.0	0.003	
PB113110BS	97.921	0.0	0.089	
J5021-01	0.563	0.0	0.005	
J5021-01DUP	0.721	0.0	0.005	
J5021-01MS	30.280	0.0	0.030	
J5021-01MSD	30.651	0.0	0.031	
J5021-05	0.320	0.0	0.004	
J5021-09	0.766	0.0	0.005	
J5021-13	3.254	0.0	0.007	
J5021-17	0.685	0.0	0.005	
CCV2	245.903	0.0	0.217	
CCB2	-0.512	0.0	0.004	
J5023-01	1.471	0.0	0.005	
J5023-05	8.646	0.0	0.012	
J5023-09	-0.917	0.0	0.003	
J5025-01	-0.318	0.0	0.004	
CCV3	246.974	0.0	0.218	
CCB3	-0.679	0.0	0.004	

N 22
Mean 45.665
SD 86.1449
CV% 188.65

CHEMTECH
284 Sheffield Street,
Mountainside, NJ 07092
Reviewed by : AS

9/21/2018 14:01

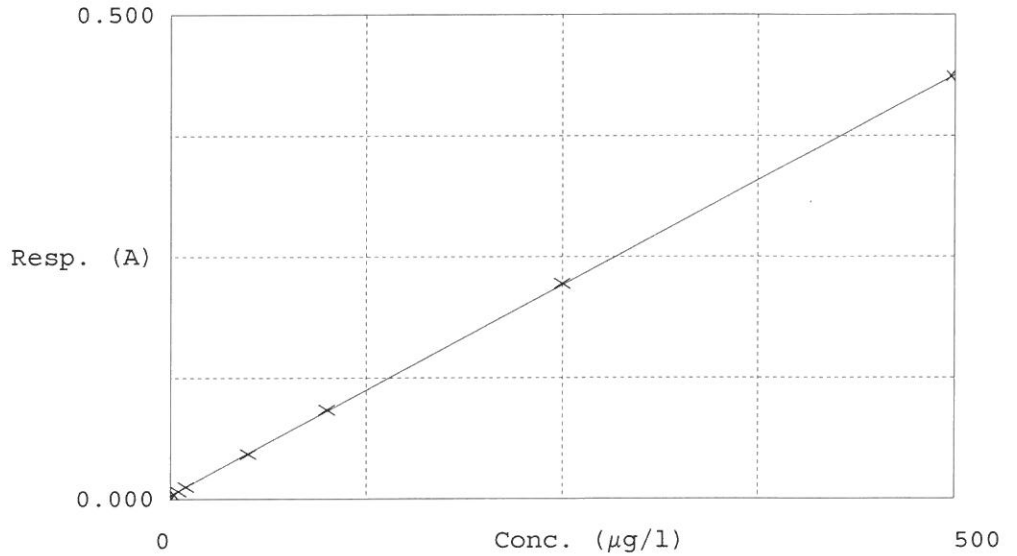
Test Total CN

Accepted 9/21/2018 9:10

Factor 1153
Bias 0.004

Coeff. of det. 0.999959

Errors



	Calibrator	Response	Calc. con.	Conc.	Errors
1	0.0PPBCN	0.004	-0.6364	0.0000	
2	5.0PPBCN	0.008	4.6363	5.0000	
3	10PPBCN	0.013	9.8268	10.0000	
4	50PPBCN	0.047	48.9309	50.0000	
5	100PPBCN	0.092	101.5656	100.0000	
6	250PPBCN	0.222	251.7520	250.0000	
7	500PPBCN	0.437	498.9249	500.0000	

Aquakem v. 7.2AQ1

Results from time period:

Fri Sep 21 14:19:39 2018

Fri Sep 21 14:43:43 2018

Sample Id	Sam/Ctr/c/	Test short	Test type	Result	Result unit	Result date and time	Stat
0.0PPBCN	A	Total CN	P	-0.6364	µg/l	9/21/2018 9:09:04	
5.0PPBCN	A	Total CN	P	4.6363	µg/l	9/21/2018 9:09:05	
10PPBCN	A	Total CN	P	9.8268	µg/l	9/21/2018 9:09:06	
50PPBCN	A	Total CN	P	48.9309	µg/l	9/21/2018 9:09:07	
100PPBCN	A	Total CN	P	101.5656	µg/l	9/21/2018 9:09:08	
250PPBCN	A	Total CN	P	251.752	µg/l	9/21/2018 9:09:09	
500PPBCN	A	Total CN	P	498.9249	µg/l	9/21/2018 9:09:10	
ICV1	S	Total CN	P	96.8583	µg/l	9/21/2018 14:19:39	
ICB1	S	Total CN	P	-0.3516	µg/l	9/21/2018 14:19:40	
CCV1	S	Total CN	P	243.5837	µg/l	9/21/2018 14:19:41	
CCB1	S	Total CN	P	-0.4203	µg/l	9/21/2018 14:19:42	
PB113110BL	S	Total CN	P	-0.7689	µg/l	9/21/2018 14:19:43	
PB113110BS	S	Total CN	P	97.9205	µg/l	9/21/2018 14:19:44	
J5021-01	S	Total CN	P	0.5634	µg/l	9/21/2018 14:19:45	
J5021-01DUP	S	Total CN	P	0.721	µg/l	9/21/2018 14:19:46	
J5021-01MS	S	Total CN	P	30.2797	µg/l	9/21/2018 14:19:47	
J5021-01MSD	S	Total CN	P	30.6511	µg/l	9/21/2018 14:19:48	
J5021-05	S	Total CN	P	0.3199	µg/l	9/21/2018 14:19:49	
J5021-09	S	Total CN	P	0.7657	µg/l	9/21/2018 14:27:14	
J5021-13	S	Total CN	P	3.2541	µg/l	9/21/2018 14:27:15	
J5021-17	S	Total CN	P	0.6849	µg/l	9/21/2018 14:27:16	
CCV2	S	Total CN	P	245.9033	µg/l	9/21/2018 14:27:17	
CCB2	S	Total CN	P	-0.5119	µg/l	9/21/2018 14:27:18	
J5023-01	S	Total CN	P	1.471	µg/l	9/21/2018 14:27:19	
J5023-05	S	Total CN	P	8.6455	µg/l	9/21/2018 14:27:20	
J5023-09	S	Total CN	P	-0.9174	µg/l	9/21/2018 14:27:21	
J5025-01	S	Total CN	P	-0.3184	µg/l	9/21/2018 14:27:22	
CCV3	S	Total CN	P	246.9745	µg/l	9/21/2018 14:27:23	
CCB3	S	Total CN	P	-0.6786	µg/l	9/21/2018 14:27:24	