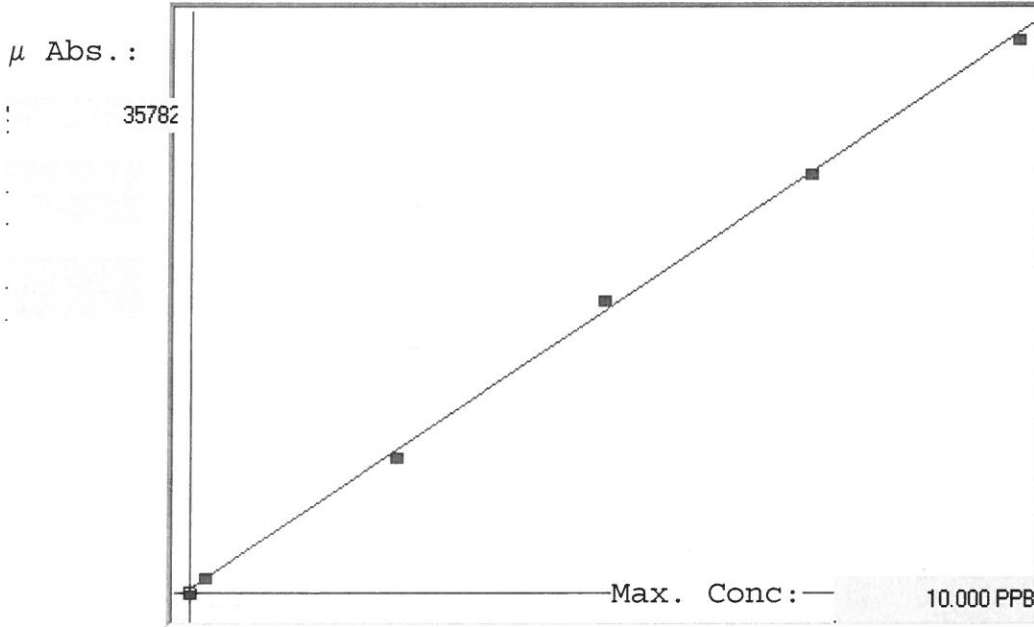


LB 98433

7470A

INSTRUMENT ID: CV1

Linear



A= 0.0000e+000  
 B= 2.7830e-004  
 C= -6.4726e-002  
 Rho= 0.9995503  
 Accept= Accepted

Std ID	Conc.	Calc.	Dev.	Mean	SD or %RSD	Rep 1	Rep 2	Rep 3	Rep 4	Rep 5
0.0	0.000	-0.054	-0.054	38	0.000	38				
0.2	0.200	0.213	0.013	999	0.0 %	999				
2.5	2.500	2.410	-0.090	8894	0.0 %	8894				
5.0	5.000	5.225	0.225	19009	0.0 %	19009				
7.5	7.500	7.512	0.012	27224	0.0 %	27224				
10.0	10.000	9.893	-0.107	35782	0.0 %	35782				

# LB98433 INSTRUMENT ID : CV1

Method: 7470A

Operator: Admin

Date of Analysis: 08 Oct 2018 10:03:59

Sample ID	Extended ID	µ Abs	Conc.	Std Conc	Method	Units	Date	Type	Type
0.0 - 1	SO	38	-	0.0000	7470A	PPB	08 Oct 2018 10:13:07	S	Std
0.2 - 1	SO.2	999	-	0.2000	7470A	PPB	08 Oct 2018 10:15:18	S	Std
2.5 - 1	J2.5	8894	-	2.5000	7470A	PPB	08 Oct 2018 10:17:26	S	Std
5.0 - 1	J5	19009	-	5.0000	7470A	PPB	08 Oct 2018 10:19:34	S	Std
7.5 - 1	J7.5	27224	-	7.5000	7470A	PPB	08 Oct 2018 10:21:42	S	Std
10.0 - 1	S10	35782	-	10.0000	7470A	PPB	08 Oct 2018 10:23:49	S	Std
ICV10 - 1	ICV10	14097	3.8584	-	7470A	PPB	08 Oct 2018 10:26:31	U	SMPL
ICB10 - 1	ICB10	128	-0.0291	-	7470A	PPB	08 Oct 2018 10:28:37	U	SMPL
CCV12 - 1	CCV12	19250	5.2925	-	7470A	PPB	08 Oct 2018 10:30:43	U	SMPL
CCB12 - 1	CCB12	244	0.0032	-	7470A	PPB	08 Oct 2018 10:32:50	U	SMPL
CRA - 1	CRA	985	0.2094	-	7470A	PPB	08 Oct 2018 10:34:58	U	SMPL
HighStd - 1	HighStd	36405	10.0667	-	7470A	PPB	08 Oct 2018 10:37:04	U	SMPL
ChkStd - 1	ChkStd	25478	7.0257	-	7470A	PPB	08 Oct 2018 10:39:11	U	SMPL
PB113571BL - 1	PBW	2	-0.0642	-	7470A	PPB	08 Oct 2018 10:41:20	U	SMPL
PB113571BS - 1	LCSW	12820	3.5030	-	7470A	PPB	08 Oct 2018 10:43:31	U	SMPL
PB113571TB - 1	PB113538TB	208	-0.0068	-	7470A	PPB	08 Oct 2018 10:45:38	U	SMPL
J5179-04 - 1	T2-GRAVEL	292	0.0165	-	7470A	PPB	08 Oct 2018 10:47:48	U	SMPL
J5179-08 - 1	T1-GRAVEL	285	0.0146	-	7470A	PPB	08 Oct 2018 10:49:57	U	SMPL
J5195-02 - 1	JC-02-100418	376	0.0399	-	7470A	PPB	08 Oct 2018 10:52:06	U	SMPL
J5195-02DUP - 1	JC-02-100418DUP	281	0.0135	-	7470A	PPB	08 Oct 2018 10:54:13	U	SMPL
CCV13 - 1	CCV13	19020	5.2285	-	7470A	PPB	08 Oct 2018 10:56:19	U	SMPL
CCB13 - 1	CCB13	230	-0.0007	-	7470A	PPB	08 Oct 2018 10:58:26	U	SMPL
J5195-02MS - 1	JC-02-100418MS	12305	3.3597	-	7470A	PPB	08 Oct 2018 11:00:35	U	SMPL
J5195-02MSD - 1	JC-02-100418MSD	12357	3.3742	-	7470A	PPB	08 Oct 2018 11:02:41	U	SMPL
J5205-02 - 1	TR-05-100418	-109	-0.0951	-	7470A	PPB	08 Oct 2018 11:04:48	U	SMPL
J5255-03 - 1	TRACK-D-1	-21	-0.0706	-	7470A	PPB	08 Oct 2018 11:06:55	U	SMPL
J5255-06 - 1	TRACK-D-2	0	-0.0647	-	7470A	PPB	08 Oct 2018 11:09:03	U	SMPL
PB113572BL - 1	PBW	366	0.0371	-	7470A	PPB	08 Oct 2018 11:11:11	U	SMPL
PB113572BS - 1	LCSW	12932	3.5342	-	7470A	PPB	08 Oct 2018 11:13:19	U	SMPL
PB113572TB - 1	PB113540TB	280	0.0132	-	7470A	PPB	08 Oct 2018 11:15:27	U	SMPL
J5244-05 - 1	OILY-WATER	319	0.0241	-	7470A	PPB	08 Oct 2018 11:17:37	U	SMPL
J5244-05DUP - 1	OILY-WATERDUP	334	0.0282	-	7470A	PPB	08 Oct 2018 11:19:44	U	SMPL
CCV14 - 1	CCV14	19388	5.3309	-	7470A	PPB	08 Oct 2018 11:21:51	U	SMPL
CCB14 - 1	CCB14	197	-0.0099	-	7470A	PPB	08 Oct 2018 11:23:58	U	SMPL
J5244-05MS - 1	OILY-WATERMS	13332	3.6455	-	7470A	PPB	08 Oct 2018 11:26:06	U	SMPL
J5244-05MSD - 1	OILY-WATERMSD	13043	3.5651	-	7470A	PPB	08 Oct 2018 11:28:13	U	SMPL
J5248-02 - 1	N48971	190	-0.0118	-	7470A	PPB	08 Oct 2018 11:30:20	U	SMPL
J5262-03 - 1	N48964-BS	331	0.0274	-	7470A	PPB	08 Oct 2018 11:32:28	U	SMPL
PB113574BL - 1	PBW	353	0.0335	-	7470A	PPB	08 Oct 2018 11:34:35	U	SMPL
PB113574BS - 1	LCSW	13953	3.8184	-	7470A	PPB	08 Oct 2018 11:36:43	U	SMPL
J5244-04 - 1	OILY-WATER	169	-0.0177	-	7470A	PPB	08 Oct 2018 11:38:51	U	SMPL
J5248-01 - 1	N48971	411	0.0497	-	7470A	PPB	08 Oct 2018 11:40:59	U	SMPL
J5262-02 - 1	N48964-BS	575	0.0953	-	7470A	PPB	08 Oct 2018 11:42:43	U	SMPL
J5262-02DUP - 1	N48964-BSDUP	542	0.0861	-	7470A	PPB	08 Oct 2018 11:44:50	U	SMPL
CCV15 - 1	CCV15	19117	5.2555	-	7470A	PPB	08 Oct 2018 11:46:57	U	SMPL
CCB15 - 1	CCB15	177	-0.0155	-	7470A	PPB	08 Oct 2018 11:49:04	U	SMPL
J5262-02MS - 1	N48964-BSMS	15031	4.1184	-	7470A	PPB	08 Oct 2018 11:51:12	U	SMPL
J5262-02MSD - 1	N48964-BSMSD	14863	4.0716	-	7470A	PPB	08 Oct 2018 11:53:20	U	SMPL
J5195-02LX5 - 1		0	-0.0647	-	7470A	PPB	08 Oct 2018 12:00:27	U	SMPL
J5195-02A - 1		14921	4.0878	-	7470A	PPB	08 Oct 2018 12:02:36	U	SMPL
J5244-05LX5 - 1		-54	-0.0798	-	7470A	PPB	08 Oct 2018 12:04:43	U	SMPL
J5244-05A - 1		14872	4.0741	-	7470A	PPB	08 Oct 2018 12:06:51	U	SMPL
J5262-02LX5 - 1		-10	-0.0675	-	7470A	PPB	08 Oct 2018 12:08:59	U	SMPL
J5262-02A - 1		17651	4.8475	-	7470A	PPB	08 Oct 2018 12:11:08	U	SMPL
CCV16 - 1	CCV16	19404	5.3354	-	7470A	PPB	08 Oct 2018 12:13:17	U	SMPL
CCB16 - 1	CCB16	210	-0.0063	-	7470A	PPB	08 Oct 2018 12:15:25	U	SMPL