

LB102023

Test results

Aquakem 7.2AQ1

Page: 1

CHEMTECH
284 Sheffield Street,
Mountainside, NJ 07092
Reviewed by : AS

Instrument ID : Konelab

4/24/2019 9:51

Test: Nitrite

Sample Id	Result <i>mg/l</i>	Dil. 1 +	Response	Errors
ICV1	0.329	0.0	0.835	Blank resp. low
ICB1	-0.002	0.0	0.003	Blank resp. low
CCV1	0.321	0.0	0.815	Blank resp. low
CCB1	-0.003	0.0	0.003	Blank resp. low
LB102023BL	-0.003	0.0	0.003	Blank resp. low
LB102023BS	0.329	0.0	0.833	Blank resp. low
K2241-09	0.001	0.0	0.012	Blank resp. low
CCV2	0.316	0.0	0.802	Blank resp. low
CCB2	-0.002	0.0	0.004	Blank resp. low

N 9
Mean 0.143
SD 0.1717
CV% 120.06

CHEMTECH
 284 Sheffield Street,
 Mountainside, NJ 07092
 Reviewed by : AS

Instrument ID : Konelab

4/24/2019 8:53

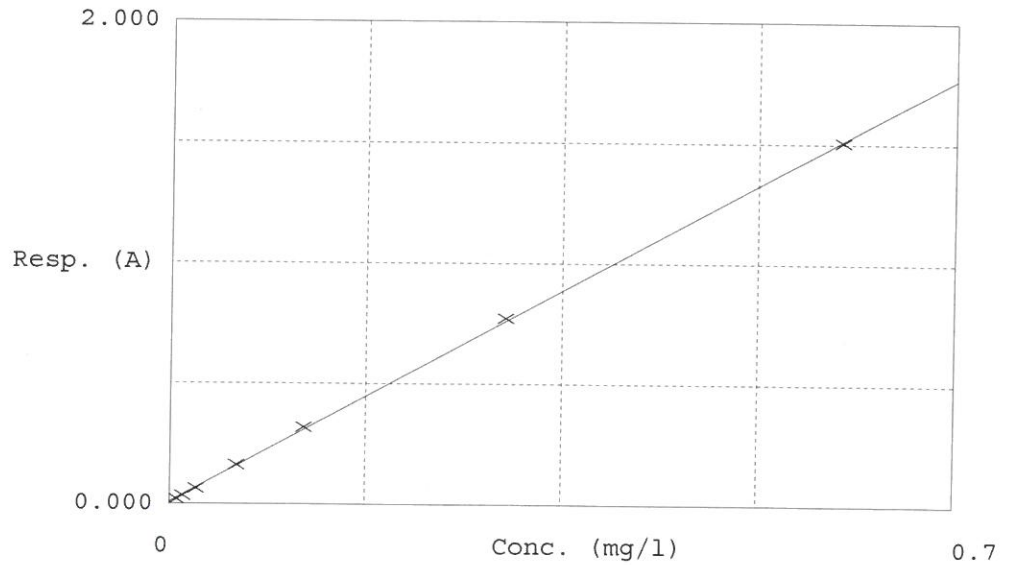
Test Nitrite

Accepted 4/24/2019 8:53

Factor 0.399
 Bias 0.009

Coeff. of det. 0.999801

Errors Meas. error



	Calibrator	Response	Calc. con.	Conc.	Errors
1	NITRITE0.6	0.018	0.0035	0.0060	Blank resp. low
2	NITRITE0.6	0.034	0.0099	0.0120	Blank resp. low
3	NITRITE0.6	0.065	0.0222	0.0240	Blank resp. low
4	NITRITE0.6	0.163	0.0613	0.0600	Blank resp. low
5	NITRITE0.6	0.319	0.1236	0.1200	
6	NITRITE0.6	0.772	0.3045	0.3000	
7	NITRITE0.6	1.506	0.5970	0.6000	Blank resp. low

Aquakem v. 7.2AQ1

Results from time period:

Wed Apr 24 08:12:20 2019

Wed Apr 24 09:31:57 2019

Sample Id	Sam/Ctr/c/	Test short name	Test type	Result	Result unit	Result date and time
0.0061PPM	A	Nitrite+Nitrate	P	0.0035	mg/l	4/24/2019 8:51:32
0.0122PPM	A	Nitrite+Nitrate	P	0.0099	mg/l	4/24/2019 8:51:33
0.0243PPM	A	Nitrite+Nitrate	P	0.0222	mg/l	4/24/2019 8:51:34
0.0608PPM	A	Nitrite+Nitrate	P	0.0613	mg/l	4/24/2019 8:51:35
0.1216PPM	A	Nitrite+Nitrate	P	0.1236	mg/l	4/24/2019 8:51:36
0.304PPM	A	Nitrite+Nitrate	P	0.3045	mg/l	4/24/2019 8:51:37
0.608PPM	A	Nitrite+Nitrate	P	0.597	mg/l	4/24/2019 8:51:38
ICV1	S	Nitrite+Nitrate	P	0.3294	mg/l	4/24/2019 9:11:58
ICB1	S	Nitrite+Nitrate	P	-0.0025	mg/l	4/24/2019 9:11:59
CCV1	S	Nitrite+Nitrate	P	0.3215	mg/l	4/24/2019 9:12:00
CCB1	S	Nitrite+Nitrate	P	-0.0026	mg/l	4/24/2019 9:12:01
LB102023BL	S	Nitrite+Nitrate	P	-0.0026	mg/l	4/24/2019 9:12:02
LB102023BS	S	Nitrite+Nitrate	P	0.3288	mg/l	4/24/2019 9:12:03
K2241-09	S	Nitrite+Nitrate	P	0.0011	mg/l	4/24/2019 9:12:04
CCV2	S	Nitrite+Nitrate	P	0.3161	mg/l	4/24/2019 9:31:56
CCB2	S	Nitrite+Nitrate	P	-0.0022	mg/l	4/24/2019 9:31:57