

CHEMTECH  
 284 Sheffield Street,  
 Mountainside, NJ 07092  
 Reviewed by : CJ

Instrument ID : Konelab

7/18/2019 13:40

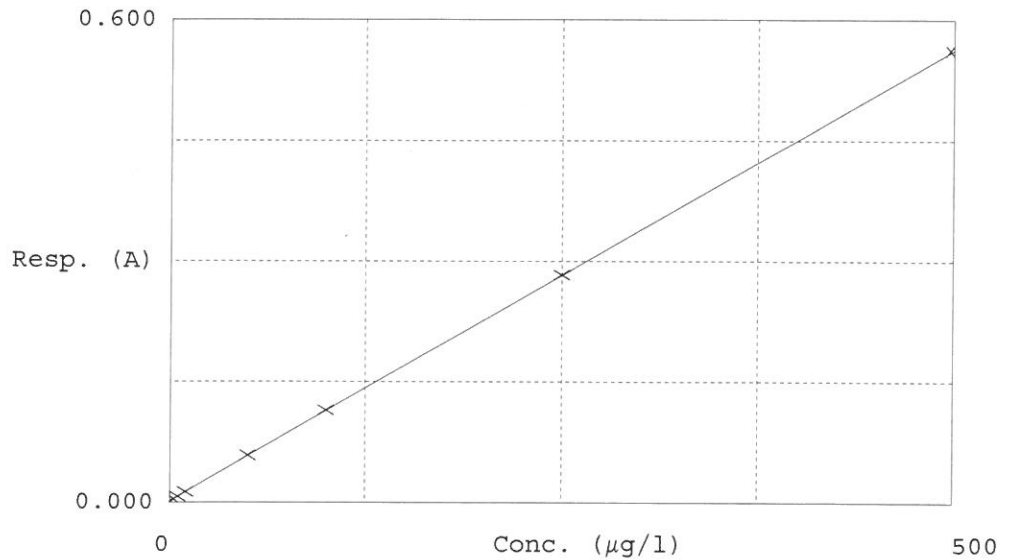
-----  
 Test ~~Total~~ <sup>Reactive</sup> CN

Accepted 7/18/2019 13:40

Factor 892.2  
 Bias 0.002

Coeff. of det. 0.999995

Errors



	Calibrator	Response	Calc. con.	Conc.	Errors
1	0.0PPBCN	0.002	-0.3744	0.0000	
2	5.0PPBCN	0.007	4.6181	5.0000	
3	10PPBCN	0.013	9.7874	10.0000	
4	50PPBCN	0.059	50.3559	50.0000	
5	100PPBCN	0.115	100.5585	100.0000	
6	250PPBCN	0.283	250.3874	250.0000	
7	500PPBCN	0.562	499.6671	500.0000	



CT

Aquakem v. 7.2AQ1

Results from time period:

Thu Jul 18 13:37:11 2019

Thu Jul 18 15:38:16 2019

Sample Id	Sam/Ctr/c/	Test short name	Test type	Result	Result unit	Result date and time	Stat
0.OPPBCN	A	Reactive CN	P	-0.3744	µg/l	7/18/2019 13:37:11	
5.OPPBCN	A	Reactive CN	P	4.6181	µg/l	7/18/2019 13:37:12	
10PPBCN	A	Reactive CN	P	9.7874	µg/l	7/18/2019 13:37:13	
50PPBCN	A	Reactive CN	P	50.3559	µg/l	7/18/2019 13:37:14	
100PPBCN	A	Reactive CN	P	100.5585	µg/l	7/18/2019 13:37:15	
250PPBCN	A	Reactive CN	P	250.3874	µg/l	7/18/2019 13:37:16	
500PPBCN	A	Reactive CN	P	499.6671	µg/l	7/18/2019 13:37:17	
ICV1	S	Reactive CN	P	96.4131	µg/l	7/18/2019 14:32:18	
ICB1	S	Reactive CN	P	0.1001	µg/l	7/18/2019 14:32:19	
CCV1	S	Reactive CN	P	241.5664	µg/l	7/18/2019 14:32:20	
CCB1	S	Reactive CN	P	0.0102	µg/l	7/18/2019 14:32:21	
PB121492BL	S	Reactive CN	P	-0.3603	µg/l	7/18/2019 14:32:22	
K3857-02`	S	Reactive CN	P	-0.098	µg/l	7/18/2019 14:32:23	
K3857-02DUP	S	Reactive CN	P	-0.1592	µg/l	7/18/2019 14:32:24	
PB121491BL	S	Reactive CN	P	-0.0584	µg/l	7/18/2019 14:32:25	
K3615-02	S	Reactive CN	P	-0.0667	µg/l	7/18/2019 14:32:26	
K3615-02DUP	S	Reactive CN	P	-0.0977	µg/l	7/18/2019 14:32:27	
K3615-04	S	Reactive CN	P	-0.0738	µg/l	7/18/2019 14:32:28	
K3615-06	S	Reactive CN	P	-0.0301	µg/l	7/18/2019 14:39:51	
K3835-14	S	Reactive CN	P	0.1746	µg/l	7/18/2019 14:39:53	
CCV2	S	Reactive CN	P	241.5492	µg/l	7/18/2019 14:39:54	
CCB2	S	Reactive CN	P	0.0199	µg/l	7/18/2019 14:39:55	
K3835-19	S	Reactive CN	P	-0.1104	µg/l	7/18/2019 14:39:56	
K3866-02	S	Reactive CN	P	0.0167	µg/l	7/18/2019 14:39:58	
K3868-08	S	Reactive CN	P	0.0243	µg/l	7/18/2019 14:40:00	
K3868-10	S	Reactive CN	P	-0.0741	µg/l	7/18/2019 14:40:01	
K3868-12	S	Reactive CN	P	-0.1612	µg/l	7/18/2019 14:45:06	
PB121456BL	S	Reactive CN	P	-0.1208	µg/l	7/18/2019 14:45:07	
K3838-04	S	Reactive CN	P	-0.1744	µg/l	7/18/2019 14:45:08	
K3838-04DUP	S	Reactive CN	P	-0.1088	µg/l	7/18/2019 14:45:09	
CCV3	S	Reactive CN	P	249.1998	µg/l	7/18/2019 14:45:10	
CCB3	S	Reactive CN	P	0.0588	µg/l	7/18/2019 14:45:11	
K3835-49	S	Reactive CN	P	-0.2041	µg/l	7/18/2019 14:56:39	
K3618-06	S	Reactive CN	P	1.6494	µg/l	7/18/2019 15:38:12	
K3868-06	S	Reactive CN	P	0.0622	µg/l	7/18/2019 15:38:14	
CCV4	S	Reactive CN	P	252.5605	µg/l	7/18/2019 15:38:15	
CCB4	S	Reactive CN	P	0.0556	µg/l	7/18/2019 15:38:16	