

LB 85670

CHEMTECH  
284 Sheffield Street,  
Mountainside, NJ 07092  
Reviewed by : AK

2/3/2017 10:39

Test: Total CN

Sample Id	Result	Dil. 1 +	Response	Errors
ICV1	92.818	0.0	0.091	
ICB1	0.662	0.0	0.006	
CCV1	235.358	0.0	0.223	
CCB1	0.792	0.0	0.006	
PB96685BLS	0.548	0.0	0.005	
LOWPB96685	10.446	0.0	0.015	
HIGHPB96685	485.150	0.0	0.454	
I1658-06	1.751	0.0	0.007	
I1658-11	1.846	0.0	0.007	
CCV2	242.420	0.0	0.230	
CCB2	0.948	0.0	0.006	
I1658-16	0.723	0.0	0.006	
I1659-06	0.809	0.0	0.006	
I1664-01	0.923	0.0	0.006	
I1665-01s	1.275	0.0	0.006	
PB96685BSM S	98.001	0.0	0.096	
I1658-01	0.712	0.0	0.006	
I1658-01D	0.400	0.0	0.005	
I1658-01S	38.790	0.0	0.041	
I1658-01SD	38.012	0.0	0.040	
CCV3	248.941	0.0	0.236	
CCB3	0.798	0.0	0.006	
N	22			
Mean	68.278			
SD	125.4008			
CV%	183.66			

DL  
2/3/18

PB96685BSM

DL  
2/3/18

LB 85 670

AK

Aquakem v. 7.2AQ1

Results from time period:

Fri Feb 03 09:24:37 2017

Fri Feb 03 10:32:17 2017

Sample Id	Sam/Ctr/c/	Test short	Test type	Result	Result unit	Result date and time	Stat
0.OPPBCN	A	Total CN	P	-0.4186	µg/l	2/3/2017 9:24:37	
5.OPPBCN	A	Total CN	P	4.488	µg/l	2/3/2017 9:24:38	
10PPBCN	A	Total CN	P	9.9232	µg/l	2/3/2017 9:24:39	
50PPBCN	A	Total CN	P	49.3802	µg/l	2/3/2017 9:24:40	
100PPBCN	A	Total CN	P	101.2609	µg/l	2/3/2017 9:24:41	
250PPBCN	A	Total CN	P	251.0998	µg/l	2/3/2017 9:24:42	
500PPBCN	A	Total CN	P	499.2666	µg/l	2/3/2017 9:24:43	
ICV1	S	Total CN	P	92.8176	µg/l	2/3/2017 9:56:22	
ICB1	S	Total CN	P	0.662	µg/l	2/3/2017 9:56:23	
CCV1	S	Total CN	P	235.3576	µg/l	2/3/2017 9:56:24	
CCB1	S	Total CN	P	0.7921	µg/l	2/3/2017 9:56:25	
PB96685BLS	S	Total CN	P	0.548	µg/l	2/3/2017 9:56:26	
LOWPB96685	S	Total CN	P	10.4458	µg/l	2/3/2017 9:56:28	
HIGHPB96685	S	Total CN	P	485.1505	µg/l	2/3/2017 9:56:29	
I1658-06	S	Total CN	P	1.7513	µg/l	2/3/2017 10:03:58	
I1658-11	S	Total CN	P	1.8459	µg/l	2/3/2017 10:03:59	
CCV2	S	Total CN	P	242.4196	µg/l	2/3/2017 10:04:00	
CCB2	S	Total CN	P	0.9479	µg/l	2/3/2017 10:04:01	
I1658-16	S	Total CN	P	0.7231	µg/l	2/3/2017 10:04:02	
I1659-06	S	Total CN	P	0.8093	µg/l	2/3/2017 10:04:03	
I1664-01	S	Total CN	P	0.9227	µg/l	2/3/2017 10:04:04	
I1665-01	S	Total CN	P	1.2748	µg/l	2/3/2017 10:04:05	
PB96686BSW	S	Total CN	P	98.0013	µg/l	2/3/2017 10:32:11	
I1658-01	S	Total CN	P	0.7118	µg/l	2/3/2017 10:32:12	
I1658-01D	S	Total CN	P	0.3999	µg/l	2/3/2017 10:32:13	
I1658-01S	S	Total CN	P	38.7898	µg/l	2/3/2017 10:32:14	
I1658-01SD	S	Total CN	P	38.0119	µg/l	2/3/2017 10:32:15	
CCV3	S	Total CN	P	248.9408	µg/l	2/3/2017 10:32:16	
CCB3	S	Total CN	P	0.7978	µg/l	2/3/2017 10:32:17	

17/18

PB 96685 BSS

21/18

CHEMTECH  
 284 Sheffield Street,  
 Mountainside, NJ 07092  
 Reviewed by : AV

2/3/2017 9:27  
 -----

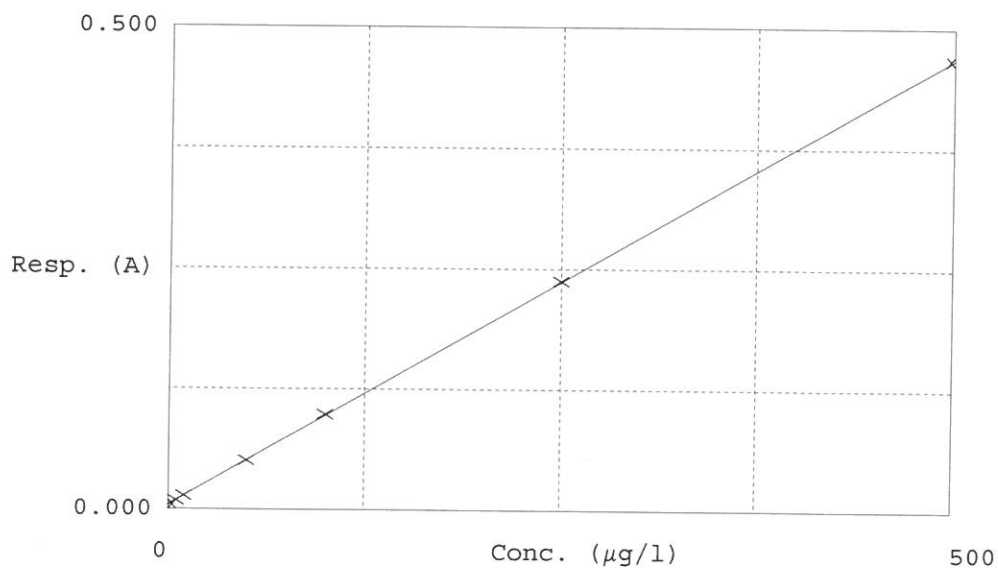
Test Total CN

Accepted 2/3/2017 9:27

Factor 1079  
 Bias 0.005

Coeff. of det. 0.999980

Errors



	Calibrator	Response	Calc. con.	Conc.	Errors
1	0.0PPBCN	0.005	-0.4186	0.0000	
2	5.0PPBCN	0.009	4.4880	5.0000	
3	10PPBCN	0.014	9.9232	10.0000	
4	50PPBCN	0.051	49.3802	50.0000	
5	100PPBCN	0.099	101.2609	100.0000	
6	250PPBCN	0.238	251.0998	250.0000	
7	500PPBCN	0.467	499.2666	500.0000	