

LB 87102

Test results

Aquakem 7.2AQ1

Page: 1

CHEMTECH
284 Sheffield Street,
Mountainside, NJ 07092
Reviewed by : AK

4/27/2017 16:08

Test: Total CN

Sample Id	Result	Dil. 1 +	Response	Errors
ICV1	92.374	0.0	0.088	
ICB1	-0.537	0.0	0.005	
CCV1	237.134	0.0	0.219	
CCB1	-0.629	0.0	0.005	
PB98530BL	-0.725	0.0	0.004	
I2860-07	-0.776	0.0	0.004	
I2860-07DUP	-0.869	0.0	0.004	
I2860-09	-0.948	0.0	0.004	
I2860-10	-1.401	0.0	0.004	
I2870-08	-0.658	0.0	0.005	
PB98531BL	-1.078	0.0	0.004	
I2855-01	-0.881	0.0	0.004	
I2855-01DUP	-0.752	0.0	0.004	
I2855-02	-0.610	0.0	0.005	
CCV2	252.786	0.0	0.233	
CCB2	-0.767	0.0	0.004	
I2869-05	-0.617	0.0	0.005	
I2870-02	-1.085	0.0	0.004	
I2860-08	-0.245	0.0	0.005	
CCV3	254.627	0.0	0.234	
CCB3	-0.429	0.0	0.005	

N	21
Mean	39.234
SD	89.7740
CV%	228.82

LB87102

Aquakem v. 7.2AQ1

Results from time period:

Thu Apr 27 15:55:43 2017

A12

Thu Apr 27 16:06:29 2017

Sample Id	Sam/Ctr/c/	Test short na	Test type	Result	Result unit	Result date and time	Stat
0.OPPBCN	A	Reactive CN	P	-1.3651	µg/l	4/27/2017 12:31:53	
5.OPPBCN	A	Reactive CN	P	4.1128	µg/l	4/27/2017 12:31:54	
10PPBCN	A	Reactive CN	P	9.7722	µg/l	4/27/2017 12:31:55	
50PPBCN	A	Reactive CN	P	49.5272	µg/l	4/27/2017 12:31:56	
100PPBCN	A	Reactive CN	P	99.9616	µg/l	4/27/2017 12:31:57	
250PPBCN	A	Reactive CN	P	255.8459	µg/l	4/27/2017 12:31:58	
500PPBCN	A	Reactive CN	P	497.1454	µg/l	4/27/2017 12:31:59	
ICV1	S	Reactive CN	P	92.3744	µg/l	4/27/2017 15:55:43	
ICB1	S	Reactive CN	P	-0.5371	µg/l	4/27/2017 15:55:44	
CCV1	S	Reactive CN	P	237.1344	µg/l	4/27/2017 15:55:45	
CCB1	S	Reactive CN	P	-0.6295	µg/l	4/27/2017 15:55:46	
PB98530BL	S	Reactive CN	P	-0.7252	µg/l	4/27/2017 15:55:47	
I2860-07	S	Reactive CN	P	-0.7763	µg/l	4/27/2017 15:55:48	
I2860-07DUP	S	Reactive CN	P	-0.8687	µg/l	4/27/2017 15:55:49	
I2860-09	S	Reactive CN	P	-0.9481	µg/l	4/27/2017 15:55:50	
I2860-10	S	Reactive CN	P	-1.4015	µg/l	4/27/2017 15:55:51	
I2870-08	S	Reactive CN	P	-0.6583	µg/l	4/27/2017 15:55:52	
PB98531BL	S	Reactive CN	P	-1.0778	µg/l	4/27/2017 15:55:53	
I2855-01	S	Reactive CN	P	-0.8814	µg/l	4/27/2017 16:00:57	
I2855-01DUP	S	Reactive CN	P	-0.7517	µg/l	4/27/2017 16:00:58	
I2855-02	S	Reactive CN	P	-0.61	µg/l	4/27/2017 16:00:59	
CCV2	S	Reactive CN	P	252.786	µg/l	4/27/2017 16:01:00	
CCB2	S	Reactive CN	P	-0.7674	µg/l	4/27/2017 16:01:01	
I2869-05	S	Reactive CN	P	-0.6169	µg/l	4/27/2017 16:01:02	
I2870-02	S	Reactive CN	P	-1.0855	µg/l	4/27/2017 16:06:26	
I2860-08	S	Reactive CN	P	-0.2454	µg/l	4/27/2017 16:06:27	
CCV3	S	Reactive CN	P	254.6271	µg/l	4/27/2017 16:06:28	
CCB3	S	Reactive CN	P	-0.4294	µg/l	4/27/2017 16:06:29	

LB87102

=====
Calibration results Aquakem 7.2AQ1 Page: 1
=====

CHEMTECH
284 Sheffield Street,
Mountainside, NJ 07092
Reviewed by : AL

4/27/2017 12:32

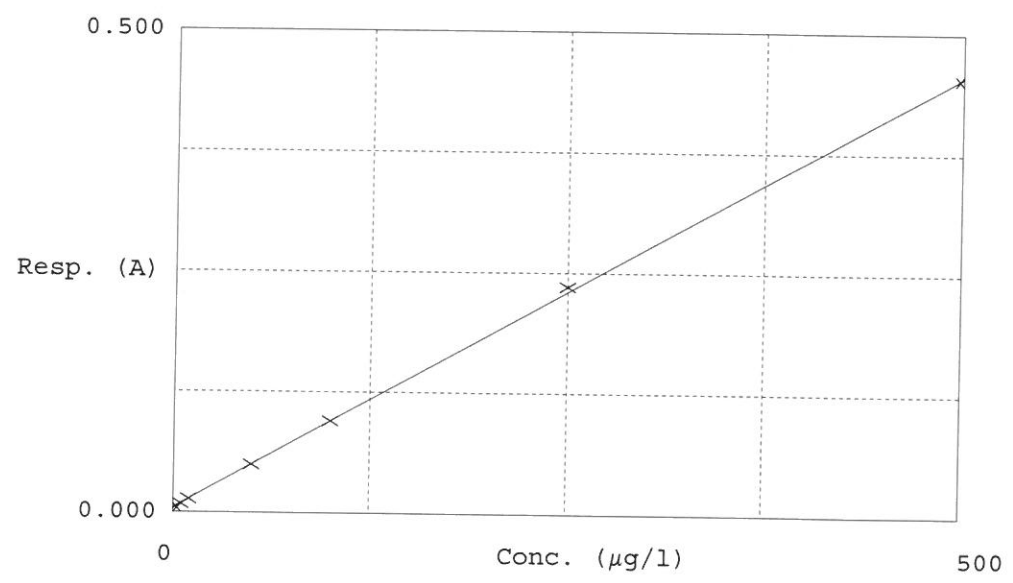
Test Total CN

Accepted 4/27/2017 12:32

Factor 1111
Bias 0.005

Coeff. of det. 0.999780

Errors



	Calibrator	Response	Calc. con.	Conc.	Errors
1	0.0PPBCN	0.004	-1.3651	0.0000	
2	5.0PPBCN	0.009	4.1128	5.0000	
3	10PPBCN	0.014	9.7722	10.0000	
4	50PPBCN	0.050	49.5272	50.0000	
5	100PPBCN	0.095	99.9616	100.0000	
6	250PPBCN	0.235	255.8459	250.0000	
7	500PPBCN	0.453	497.1454	500.0000	