

LB 87843

Test results

Aquakem 7.2AQ1

Page: 1

CHEMTECH
 284 Sheffield Street,
 Mountainside, NJ 07092
 Reviewed by : AK

5/9/2017 17:29

Test: Total CN

Sample Id	Result	Dil. 1 +	Response	Errors
ICV1	93.593	0.0	0.102	
ICB1	-1.276	0.0	0.005	
CCV1	240.464	0.0	0.251	
CCB1	-1.264	0.0	0.005	
PB98780BL	-1.220	0.0	0.005	
PB98780BS	96.484	0.0	0.105	
LOWPB98780	9.309	0.0	0.016	
HIGHPB98780	509.727	0.0	0.526	
I2976-01	121.415	0.0	0.130	
I2976-01DUP	121.133	0.0	0.130	
I2976-02MS	121.372	0.0	0.130	
I2976-03MSD	123.370	0.0	0.132	
I2976-04	40.977	0.0	0.048	
I2976-05	0.580	0.0	0.007	
CCV2	242.443	0.0	0.253	
CCB2	-0.967	0.0	0.005	
I2976-09	2.855	0.0	0.009	
I2976-10	4.597	0.0	0.011	
I2976-11MS	34.907	0.0	0.042	
I2976-12MSD	35.137	0.0	0.042	
I2976-13	10.848	0.0	0.017	
I3027-10	-2.159	0.0	0.004	
I3027-12	-1.701	0.0	0.005	
I3027-14	-1.356	0.0	0.005	
I3031-06	-0.912	0.0	0.005	
I3031-08	-0.989	0.0	0.005	
CCV3	246.675	0.0	0.258	
CCB3	-0.720	0.0	0.006	
I3034-01	4.934	0.0	0.011	
PB98820BL	-1.119	0.0	0.005	
PB98820BS	98.741	0.0	0.107	
LOWPB98820	8.878	0.0	0.015	
HIGHPB98820	485.934	0.0	0.501	
I3040-04	-0.981	0.0	0.005	
I3040-04DUP	-1.030	0.0	0.005	
I3040-04MS	31.232	0.0	0.038	
I3040-04MSD	31.126	0.0	0.038	
I3048-01	-1.189	0.0	0.005	
CCV4	247.925	0.0	0.259	
CCB4	-1.241	0.0	0.005	
I3049-01	-0.563	0.0	0.006	
CCV5	252.798	0.0	0.264	
CCB5	-0.666	0.0	0.006	

N 43
 Mean 74.374
 SD 124.8372
 CV% 167.85

CB 87343

AK

Aquakem v. 7.2AQ1

Results from time period:

Tue May 09 16:09:39 2017

Tue May 09 16:55:27 2017

Sample Id	Sam/Ctr/c/	Test short	Test type	Result	Result unit	Result date and time	Stat
0.OPPBCN	A	Total CN	P	-2.2994	µg/l	5/9/2017 9:51:36	
5.OPPBCN	A	Total CN	P	3.2657	µg/l	5/9/2017 9:51:37	
10PPBCN	A	Total CN	P	8.4852	µg/l	5/9/2017 9:51:38	
50PPBCN	A	Total CN	P	50.143	µg/l	5/9/2017 9:51:39	
100PPBCN	A	Total CN	P	102.9009	µg/l	5/9/2017 9:51:40	
250PPBCN	A	Total CN	P	256.1028	µg/l	5/9/2017 9:51:41	
500PPBCN	A	Total CN	P	496.4018	µg/l	5/9/2017 9:51:42	
ICV1	S	Total CN	P	93.593	µg/l	5/9/2017 16:09:40	
ICB1	S	Total CN	P	-1.2757	µg/l	5/9/2017 16:09:41	
CCV1	S	Total CN	P	240.4635	µg/l	5/9/2017 16:09:42	
CCB1	S	Total CN	P	-1.2643	µg/l	5/9/2017 16:09:43	
PB98780BL	S	Total CN	P	-1.2198	µg/l	5/9/2017 16:09:44	
PB98780BS	S	Total CN	P	96.4838	µg/l	5/9/2017 16:09:45	
LOWPB98780	S	Total CN	P	9.3094	µg/l	5/9/2017 16:09:46	
HIGHPB98780	S	Total CN	P	509.7265	µg/l	5/9/2017 16:09:47	
I2976-01	S	Total CN	P	121.4151	µg/l	5/9/2017 16:09:48	
I2976-01DUP	S	Total CN	P	121.1326	µg/l	5/9/2017 16:09:49	
I2976-02MS	S	Total CN	P	121.3718	µg/l	5/9/2017 16:17:14	
I2976-03MSD	S	Total CN	P	123.3702	µg/l	5/9/2017 16:17:15	
I2976-04	S	Total CN	P	40.9765	µg/l	5/9/2017 16:17:16	
I2976-05	S	Total CN	P	0.5801	µg/l	5/9/2017 16:17:17	
CCV2	S	Total CN	P	242.4428	µg/l	5/9/2017 16:17:18	
CCB2	S	Total CN	P	-0.9673	µg/l	5/9/2017 16:17:19	
I2976-09	S	Total CN	P	2.8553	µg/l	5/9/2017 16:17:20	
I2976-10	S	Total CN	P	4.5968	µg/l	5/9/2017 16:17:21	
I2976-11MS	S	Total CN	P	34.9067	µg/l	5/9/2017 16:17:22	
I2976-12MSD	S	Total CN	P	35.1367	µg/l	5/9/2017 16:17:23	
I2976-13	S	Total CN	P	10.848	µg/l	5/9/2017 16:17:24	
I3027-10	S	Total CN	P	-2.1587	µg/l	5/9/2017 16:24:46	
I3027-12	S	Total CN	P	-1.7015	µg/l	5/9/2017 16:24:47	
I3027-14	S	Total CN	P	-1.3559	µg/l	5/9/2017 16:24:48	
I3031-06	S	Total CN	P	-0.9125	µg/l	5/9/2017 16:24:49	
I3031-08	S	Total CN	P	-0.9887	µg/l	5/9/2017 16:24:50	
CCV3	S	Total CN	P	246.675	µg/l	5/9/2017 16:24:51	
CCB3	S	Total CN	P	-0.7197	µg/l	5/9/2017 16:24:52	
I3034-01	S	Total CN	P	4.9341	µg/l	5/9/2017 16:24:53	
PB98820BL	S	Total CN	P	-1.1191	µg/l	5/9/2017 16:24:54	
PB98820BS	S	Total CN	P	98.7407	µg/l	5/9/2017 16:24:55	
LOWPB98820	S	Total CN	P	8.878	µg/l	5/9/2017 16:24:56	
HIGHPB98820	S	Total CN	P	485.9336	µg/l	5/9/2017 16:32:21	
I3040-04	S	Total CN	P	-0.9812	µg/l	5/9/2017 16:32:22	
I3040-04DUP	S	Total CN	P	-1.0297	µg/l	5/9/2017 16:32:23	

AK LB87843

I3040-04MS	S	Total CN	P	31.2316 µg/l	5/9/2017 16:32:24
I3040-04MSD	S	Total CN	P	31.1262 µg/l	5/9/2017 16:32:25
I3048-01	S	Total CN	P	-1.1892 µg/l	5/9/2017 16:32:26
CCV4	S	Total CN	P	247.9252 µg/l	5/9/2017 16:32:27
CCB4	S	Total CN	P	-1.241 µg/l	5/9/2017 16:32:28
I3049-01	S	Total CN	P	-0.5626 µg/l	5/9/2017 16:32:29
CCV5	S	Total CN	P	252.7982 µg/l	5/9/2017 16:32:30
CCB5	S	Total CN	P	-0.6656 µg/l	5/9/2017 16:32:31

LB87343

=====
Calibration results

Aquakem 7.2AQ1

Page: 1

CHEMTECH
284 Sheffield Street,
Mountainside, NJ 07092
Reviewed by : AK

5/9/2017 9:57

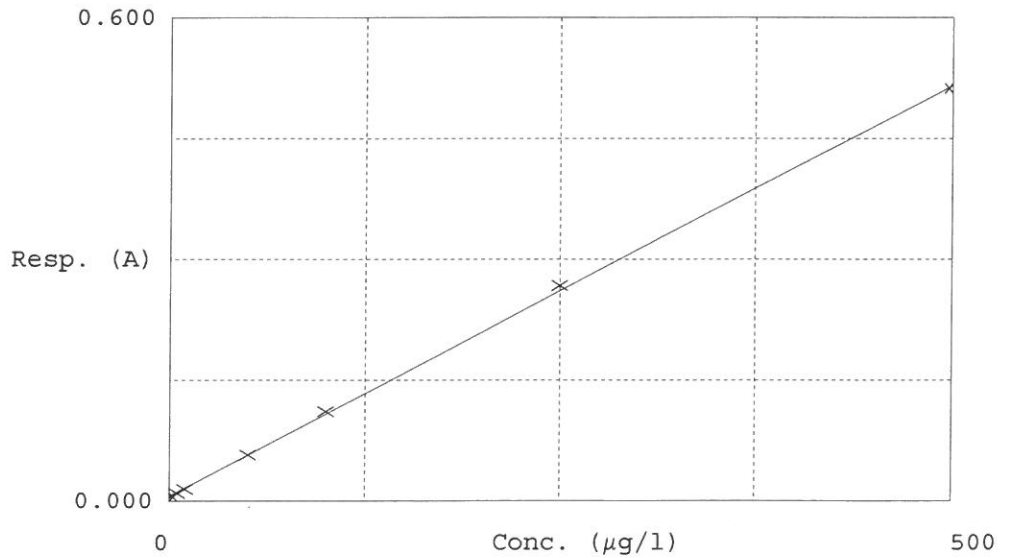
Test Total CN

Accepted 5/9/2017 9:57

Factor 981.2
Bias 0.006

Coeff. of det. 0.999663

Errors



	Calibrator	Response	Calc. con.	Conc.	Errors
1	0.0PPBCN	0.004	-2.2994	0.0000	
2	5.0PPBCN	0.010	3.2657	5.0000	
3	10PPBCN	0.015	8.4852	10.0000	
4	50PPBCN	0.057	50.1430	50.0000	
5	100PPBCN	0.111	102.9009	100.0000	
6	250PPBCN	0.267	256.1028	250.0000	
7	500PPBCN	0.512	496.4018	500.0000	