

CB 81914

Test results

Aquakem 7.2AQ1

Page: 1

CHEMTECH
284 Sheffield Street,
Mountainside, NJ 07092
Reviewed by : AIC

6/7/2017 11:11

Test: Total CN

Sample Id	Result	Dil. 1 +	Response	Errors
ICV1	92.289	0.0	0.091	
ICB1	0.788	0.0	0.004	
CCV1	239.323	0.0	0.231	
CCB1	1.333	0.0	0.005	
PB99527BL	0.966	0.0	0.004	
PB99527BS	97.248	0.0	0.096	
LOWPB99527	10.970	0.0	0.014	
HIGHPB99527	485.331	0.0	0.466	
I3478-01	1.145	0.0	0.004	
I3478-01DUP	1.000	0.0	0.004	
I3478-01MS	35.381	0.0	0.037	
I3478-01MSD	33.641	0.0	0.035	
I3478-05	0.626	0.0	0.004	
I3478-09	1.324	0.0	0.005	
CCV2	241.293	0.0	0.233	
CCB2	1.671	0.0	0.005	
I3478-13	0.813	0.0	0.004	
I3478-17	0.916	0.0	0.004	
I3481-01	1.007	0.0	0.004	
I3482-01	0.467	0.0	0.004	
I3482-04	0.898	0.0	0.004	
I3482-07	0.771	0.0	0.004	
I3482-10	0.700	0.0	0.004	
I3482-13	1.071	0.0	0.004	
PB99536BL	0.932	0.0	0.004	
PB99536BS	96.053	0.0	0.095	
CCV3	241.340	0.0	0.233	
CCB3	1.526	0.0	0.005	
I3469-01	0.934	0.0	0.004	
I3469-01DUP	0.683	0.0	0.004	
I3469-01MS	37.510	0.0	0.039	
I3469-01MSD	37.741	0.0	0.039	
I3469-02	0.501	0.0	0.004	
I3469-03	0.585	0.0	0.004	
I3469-04	0.060	0.0	0.003	
I3469-10	1.314	0.0	0.005	
I3469-11	1.475	0.0	0.005	
I3469-12	1.670	0.0	0.005	
CCV4	241.493	0.0	0.233	
CCB4	1.101	0.0	0.004	
I3469-13	1.341	0.0	0.005	
I3486-01	0.984	0.0	0.004	
PB99537BL	0.855	0.0	0.004	
PB99537BS	97.072	0.0	0.096	
I3479-01	0.905	0.0	0.004	
I3479-01DUP	0.594	0.0	0.004	
I3479-01MS	42.284	0.0	0.044	
I3479-01MSD	42.312	0.0	0.044	
I3479-02	1.954	0.0	0.005	
I3479-03	0.971	0.0	0.004	
CCV5	242.254	0.0	0.234	
CCB5	0.966	0.0	0.004	
I3479-04	1.641	0.0	0.005	
I3479-05	1.152	0.0	0.004	
I3479-09	1.051	0.0	0.004	

CHEMTECH
284 Sheffield Street,
Mountainside, NJ 07092
Reviewed by : AK

6/7/2017 11:11

Test: Total CN

ug/L

Sample Id	Result	Dil. 1 +	Response	Errors
I3479-11	0.593	0.0	0.004	
I3479-12	0.638	0.0	0.004	
I3479-13	0.381	0.0	0.004	
I3479-14	0.745	0.0	0.004	
CCV6	242.740	0.0	0.235	
CCB6	0.979	0.0	0.004	

N	61
Mean	42.595
SD	93.1063
CV%	218.58

087914

AK

Aquakem v. 7.2AQ1

Results from time period:

Wed Jun 07 09:25:15 2017

Wed Jun 07 11:06:48 2017

Sample Id	Sam/Ctr/c	Test short	Test type	Result	Result unit	Result date and time	Stat
0.OPPBCN	A	Total CN	P	0.1467	µg/l	6/7/2017 9:25:15	
5.OPPBCN	A	Total CN	P	5.2137	µg/l	6/7/2017 9:25:16	
10PPBCN	A	Total CN	P	10.7156	µg/l	6/7/2017 9:25:17	
50PPBCN	A	Total CN	P	49.1944	µg/l	6/7/2017 9:25:18	
100PPBCN	A	Total CN	P	99.1806	µg/l	6/7/2017 9:25:19	
250PPBCN	A	Total CN	P	250.6421	µg/l	6/7/2017 9:25:20	
500PPBCN	A	Total CN	P	499.9069	µg/l	6/7/2017 9:25:21	
ICV1	S	Total CN	P	92.289	µg/l	6/7/2017 10:29:15	
ICB1	S	Total CN	P	0.7882	µg/l	6/7/2017 10:29:16	
CCV1	S	Total CN	P	239.3228	µg/l	6/7/2017 10:29:17	
CCB1	S	Total CN	P	1.3335	µg/l	6/7/2017 10:29:18	
PB99527BL	S	Total CN	P	0.9655	µg/l	6/7/2017 10:29:19	
PB99527BS	S	Total CN	P	97.2477	µg/l	6/7/2017 10:29:20	
LOWPB99527	S	Total CN	P	10.9703	µg/l	6/7/2017 10:29:21	
HIGHPB99527	S	Total CN	P	485.331	µg/l	6/7/2017 10:29:22	
I3478-01	S	Total CN	P	1.1453	µg/l	6/7/2017 10:29:23	
I3478-01DUP	S	Total CN	P	1	µg/l	6/7/2017 10:29:24	
I3478-01MS	S	Total CN	P	35.3808	µg/l	6/7/2017 10:29:25	
I3478-01MSD	S	Total CN	P	33.6413	µg/l	6/7/2017 10:36:50	
I3478-05	S	Total CN	P	0.6256	µg/l	6/7/2017 10:36:51	
I3478-09	S	Total CN	P	1.3242	µg/l	6/7/2017 10:36:52	
CCV2	S	Total CN	P	241.2925	µg/l	6/7/2017 10:36:53	
CCB2	S	Total CN	P	1.6711	µg/l	6/7/2017 10:36:54	
I3478-13	S	Total CN	P	0.8128	µg/l	6/7/2017 10:36:55	
I3478-17	S	Total CN	P	0.9161	µg/l	6/7/2017 10:36:56	
I3481-01	S	Total CN	P	1.0075	µg/l	6/7/2017 10:36:57	
I3482-01	S	Total CN	P	0.4674	µg/l	6/7/2017 10:36:58	
I3482-04	S	Total CN	P	0.898	µg/l	6/7/2017 10:36:59	
I3482-07	S	Total CN	P	0.7709	µg/l	6/7/2017 10:37:00	
I3482-10	S	Total CN	P	0.7004	µg/l	6/7/2017 10:44:25	
I3482-13	S	Total CN	P	1.0706	µg/l	6/7/2017 10:44:26	
PB99536BL	S	Total CN	P	0.9319	µg/l	6/7/2017 10:44:27	
PB99536BS	S	Total CN	P	96.0533	µg/l	6/7/2017 10:44:28	
CCV3	S	Total CN	P	241.3404	µg/l	6/7/2017 10:44:29	
CCB3	S	Total CN	P	1.5256	µg/l	6/7/2017 10:44:30	
I3469-01	S	Total CN	P	0.934	µg/l	6/7/2017 10:44:31	
I3469-01DUP	S	Total CN	P	0.6834	µg/l	6/7/2017 10:44:32	
I3469-01MS	S	Total CN	P	37.5101	µg/l	6/7/2017 10:44:33	
I3469-01MSD	S	Total CN	P	37.7407	µg/l	6/7/2017 10:44:34	
I3469-02	S	Total CN	P	0.5013	µg/l	6/7/2017 10:44:35	
I3469-03	S	Total CN	P	0.5848	µg/l	6/7/2017 10:52:00	
I3469-04	S	Total CN	P	0.0602	µg/l	6/7/2017 10:52:01	

LB87914
AR

I3469-10	S	Total CN	P	1.3142 µg/l	6/7/2017 10:52:02
I3469-11	S	Total CN	P	1.4754 µg/l	6/7/2017 10:52:03
I3469-12	S	Total CN	P	1.6697 µg/l	6/7/2017 10:52:04
CCV4	S	Total CN	P	241.4932 µg/l	6/7/2017 10:52:05
CCB4	S	Total CN	P	1.1012 µg/l	6/7/2017 10:52:06
I3469-13	S	Total CN	P	1.3406 µg/l	6/7/2017 10:52:07
I3486-01	S	Total CN	P	0.984 µg/l	6/7/2017 10:52:08
PB99537BL	S	Total CN	P	0.8545 µg/l	6/7/2017 10:52:09
PB99537BS	S	Total CN	P	97.0723 µg/l	6/7/2017 10:52:10
I3479-01	S	Total CN	P	0.9046 µg/l	6/7/2017 10:59:32
I3479-01DUP	S	Total CN	P	0.5935 µg/l	6/7/2017 10:59:33
I3479-01MS	S	Total CN	P	42.2843 µg/l	6/7/2017 10:59:34
I3479-01MSD	S	Total CN	P	42.3122 µg/l	6/7/2017 10:59:35
I3479-02	S	Total CN	P	1.9542 µg/l	6/7/2017 10:59:36
I3479-03	S	Total CN	P	0.9712 µg/l	6/7/2017 10:59:37
CCV5	S	Total CN	P	242.2542 µg/l	6/7/2017 10:59:38
CCB5	S	Total CN	P	0.9662 µg/l	6/7/2017 10:59:39
I3479-04	S	Total CN	P	1.6406 µg/l	6/7/2017 10:59:40
I3479-05	S	Total CN	P	1.1516 µg/l	6/7/2017 10:59:41
I3479-09	S	Total CN	P	1.0507 µg/l	6/7/2017 10:59:42
I3479-11	S	Total CN	P	0.5926 µg/l	6/7/2017 11:06:39
I3479-12	S	Total CN	P	0.6378 µg/l	6/7/2017 11:06:40
I3479-13	S	Total CN	P	0.381 µg/l	6/7/2017 11:06:41
I3479-14	S	Total CN	P	0.745 µg/l	6/7/2017 11:06:42
CCV6	S	Total CN	P	242.7401 µg/l	6/7/2017 11:06:43
CCB6	S	Total CN	P	0.9794 µg/l	6/7/2017 11:06:44

CHEMTECH
 284 Sheffield Street,
 Mountainside, NJ 07092
 Reviewed by : AK

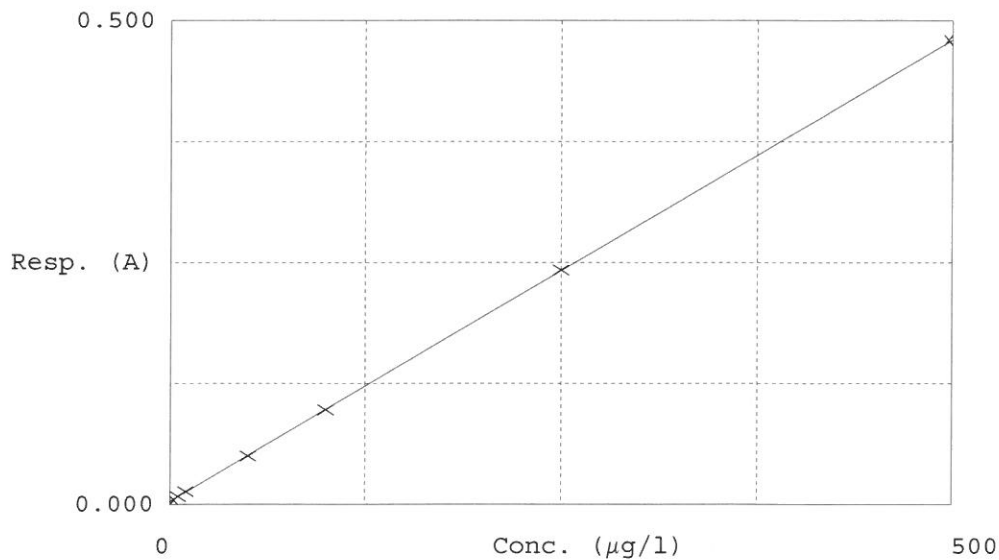
6/7/2017 9:31

Test Total CN

Accepted 6/7/2017 9:31
 Factor 1049
 Bias 0.003

Coeff. of det. 0.999989

Errors



	Calibrator	Response	Calc. con.	Conc.	Errors
1	0.0PPBCN	0.003	0.1467	0.0000	
2	5.0PPBCN	0.008	5.2137	5.0000	
3	10PPBCN	0.013	10.7156	10.0000	
4	50PPBCN	0.050	49.1944	50.0000	
5	100PPBCN	0.098	99.1806	100.0000	
6	250PPBCN	0.242	250.6421	250.0000	
7	500PPBCN	0.480	499.9069	500.0000	