

CB88527

Test results

Aquakem 7.2AQ1

Page: 1

CHEMTECH
 284 Sheffield Street,
 Mountainside, NJ 07092
 Reviewed by : AK

7/5/2017 14:37

Test: Total CN

AK
7-5-17

Sample Id	Result	Dil. 1 +	Response	Errors
ICV1	91.405	0.0	0.089	
ICB1	2.049	0.0	0.004	
CCV1	235.311	0.0	0.227	
CCB1	2.124	0.0	0.004	
PB100378BL	1.818	0.0	0.004	
PB100378BS	95.263	0.0	0.093	
HIGHPB100378	485.792	0.0	0.466	
I400-01	4.397	0.0	0.006	
I4000-01DUP	4.147	0.0	0.006	
I4000-01MS	38.717	0.0	0.039	
I4000-01MSD	36.574	0.0	0.037	
I4006-01	1.617	0.0	0.003	
I4019-01	8.111	0.0	0.010	
CCV2	237.242	0.0	0.228	
CCB2	2.122	0.0	0.004	
I4020-01	2.018	0.0	0.004	
I4020-04	2.039	0.0	0.004	
PB100420BL	1.843	0.0	0.004	
PB100420BS	96.710	0.0	0.094	
HIGHPB100420	492.266	0.0	0.472	
I4036-02	2.333	0.0	0.004	
I4036-02DUP	2.560	0.0	0.004	
I4036-03MS	36.674	0.0	0.037	
I4036-04MSD	36.304	0.0	0.037	
CCV3	239.456	0.0	0.230	
CCB3	2.189	0.0	0.004	
I4036-05	3.960	0.0	0.006	
I4049-01	2.046	0.0	0.004	
I4049-04	2.224	0.0	0.004	
I4052-01	2.023	0.0	0.004	
I4052-04	2.303	0.0	0.004	
I4053-01	2.812	0.0	0.005	
I4053-04	2.778	0.0	0.005	
I4053-07	2.642	0.0	0.004	
I4053-10	2.831	0.0	0.005	
I4053-13	2.869	0.0	0.005	
CCV4	240.806	0.0	0.232	
CCB4	2.734	0.0	0.005	
I4004-06	2.526	0.0	0.004	
I4052-07	1.995	0.0	0.004	
LOWPB100378	10.297	0.0	0.012	
LOWPB100420	10.818	0.0	0.012	
CCV5	249.983	0.0	0.241	
CCB5	2.445	0.0	0.004	

N 44
 Mean 61.572
 SD 121.4003
 CV% 197.17

UB88527

Aquakem v. 7.2AQ1

Results from time period:

Wed Jul 05 13:30:13 2017

AK

Wed Jul 05 14:26:56 2017

Sample Id	Sam/Ctr/c/	Test short	Test type	Result	Result unit	Result date and time	Stat
0.OPPBCN	A	Total CN	P	1.7965	µg/l	7/5/2017 9:19:34	
5.OPPBCN	A	Total CN	P	6.6534	µg/l	7/5/2017 9:19:35	
10PPBCN	A	Total CN	P	11.5792	µg/l	7/5/2017 9:19:36	
50PPBCN	A	Total CN	P	49.6498	µg/l	7/5/2017 9:19:37	
100PPBCN	A	Total CN	P	96.6184	µg/l	7/5/2017 9:19:38	
250PPBCN	A	Total CN	P	246.079	µg/l	7/5/2017 9:19:39	
500PPBCN	A	Total CN	P	502.6237	µg/l	7/5/2017 9:19:40	
ICV1	S	Total CN	P	91.405	µg/l	7/5/2017 13:30:13	
ICB1	S	Total CN	P	2.049	µg/l	7/5/2017 13:30:14	
CCV1	S	Total CN	P	235.3114	µg/l	7/5/2017 13:30:15	
CCB1	S	Total CN	P	2.1244	µg/l	7/5/2017 13:30:16	
PB100378BL	S	Total CN	P	1.8183	µg/l	7/5/2017 13:30:17	
PB100378BS	S	Total CN	P	95.2627	µg/l	7/5/2017 13:30:18	
HIGHPB100378	S	Total CN	P	485.7917	µg/l	7/5/2017 13:30:20	
I4000-01	S	Total CN	P	4.3973	µg/l	7/5/2017 13:30:21	
I4000-01DUP	S	Total CN	P	4.1474	µg/l	7/5/2017 13:30:22	
I4000-01MS	S	Total CN	P	38.7166	µg/l	7/5/2017 13:30:23	
I4000-01MSD	S	Total CN	P	36.574	µg/l	7/5/2017 13:37:48	
I4006-01	S	Total CN	P	1.6174	µg/l	7/5/2017 13:37:49	
I4019-01	S	Total CN	P	8.111	µg/l	7/5/2017 13:37:50	
CCV2	S	Total CN	P	237.2418	µg/l	7/5/2017 13:37:51	
CCB2	S	Total CN	P	2.1222	µg/l	7/5/2017 13:37:52	
I4020-01	S	Total CN	P	2.0175	µg/l	7/5/2017 13:37:53	
I4020-04	S	Total CN	P	2.0394	µg/l	7/5/2017 13:37:54	
PB100420BL	S	Total CN	P	1.8428	µg/l	7/5/2017 13:37:55	
PB100420BS	S	Total CN	P	96.7099	µg/l	7/5/2017 13:37:56	
HIGHPB100420	S	Total CN	P	492.2662	µg/l	7/5/2017 13:37:58	
I4036-02	S	Total CN	P	2.3325	µg/l	7/5/2017 13:45:20	
I4036-02DUP	S	Total CN	P	2.5603	µg/l	7/5/2017 13:45:21	
I4036-03MS	S	Total CN	P	36.6736	µg/l	7/5/2017 13:45:22	
I4036-04MSD	S	Total CN	P	36.3038	µg/l	7/5/2017 13:45:23	
CCV3	S	Total CN	P	239.4558	µg/l	7/5/2017 13:45:24	
CCB3	S	Total CN	P	2.1892	µg/l	7/5/2017 13:45:25	
I4036-05	S	Total CN	P	3.9601	µg/l	7/5/2017 13:45:26	
I4049-01	S	Total CN	P	2.0464	µg/l	7/5/2017 13:45:27	
I4049-04	S	Total CN	P	2.2236	µg/l	7/5/2017 13:45:28	
I4052-01	S	Total CN	P	2.0234	µg/l	7/5/2017 13:45:29	
I4052-04	S	Total CN	P	2.3029	µg/l	7/5/2017 13:45:30	
I4053-01	S	Total CN	P	2.8124	µg/l	7/5/2017 13:52:55	
I4053-04	S	Total CN	P	2.7779	µg/l	7/5/2017 13:52:56	
I4053-07	S	Total CN	P	2.6423	µg/l	7/5/2017 13:52:57	
I4053-10	S	Total CN	P	2.8311	µg/l	7/5/2017 13:52:58	

AK

LB88527

I4053-13	S	Total CN	P	2.869 µg/l	7/5/2017 13:52:59
CCV4	S	Total CN	P	240.806 µg/l	7/5/2017 13:53:00
CCB4	S	Total CN	P	2.7336 µg/l	7/5/2017 13:53:01
I4004-06	S	Total CN	P	2.526 µg/l	7/5/2017 13:53:02
I4052-07	S	Total CN	P	1.9949 µg/l	7/5/2017 13:53:03
LOWPB100378	S	Total CN	P	10.2969 µg/l	7/5/2017 14:26:52
LOWPB100420	S	Total CN	P	10.818 µg/l	7/5/2017 14:26:54
CCV5	S	Total CN	P	249.9831 µg/l	7/5/2017 14:26:55
CCB5	S	Total CN	P	2.4446 µg/l	7/5/2017 14:26:56

CHEMTECH
 284 Sheffield Street,
 Mountainside, NJ 07092
 Reviewed by : *Ne*

7/5/2017 9:22

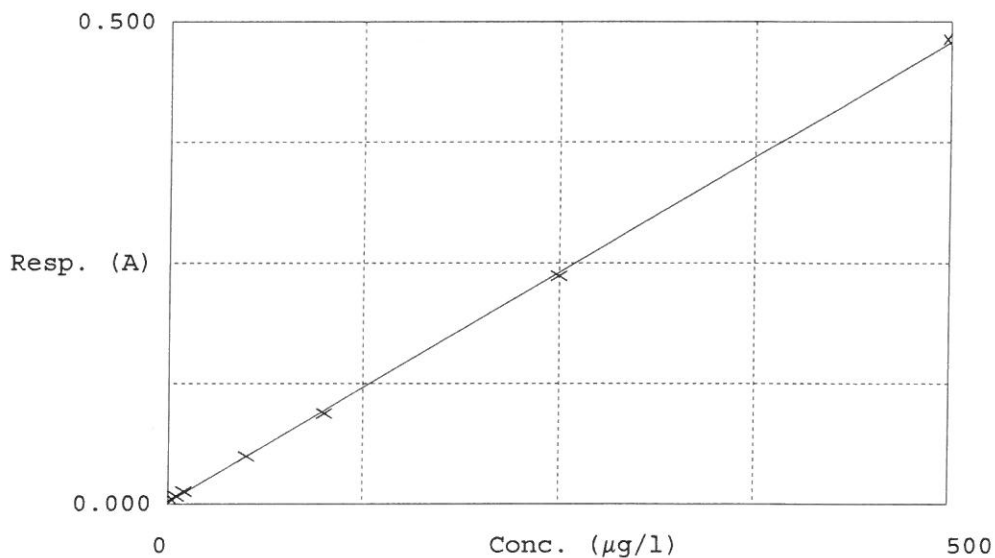
Test Total CN

Accepted 7/5/2017 9:22

Factor 1048
 Bias 0.002

Coeff. of det. 0.999794

Errors



Calibrator	Response	Calc. con.	Conc.	Errors
1	0.0PPBCN	0.004	1.7965	0.0000
2	5.0PPBCN	0.008	6.6534	5.0000
3	10PPBCN	0.013	11.5792	10.0000
4	50PPBCN	0.049	49.6498	50.0000
5	100PPBCN	0.094	96.6184	100.0000
6	250PPBCN	0.237	246.0790	250.0000
7	500PPBCN	0.482	502.6237	500.0000