

CHEMTECH
284 Sheffield Street,
Mountainside, NJ 07092
Reviewed by : DP

9/14/2017 10:35

Test: Ammonia-N

Sample Id	Result	Dil. 1 +	Response	Errors
ICV1	0.941	0.0	0.220	
ICB1	0.015	0.0	0.050	
CCV1	0.979	0.0	0.227	
CCB1	0.013	0.0	0.049	
PB102321BL	0.011	0.0	0.049	
PB102321BS	0.925	0.0	0.217	
I5219-01	0.315	0.0	0.105	
I5219-01DUP	0.281	0.0	0.099	
I5219-01MS	1.218	0.0	0.271	
I5219-01MSD	1.157	0.0	0.260	
CCV2	1.039	0.0	0.238	
CCB2	0.010	0.0	0.049	

N 12
Mean 0.575
SD 0.5051
CV% 87.80

Aquakem v. 7.2AQ1

Results from time period:

Thu Sep 14 09:39:52 2017

Thu Sep 14 10:31:52 2017

DR

Sample Id	Sam/Ctr/c/	Test short name	Test type	Result	Result unit	Result date and time
0.1PPM	A	Ammonia-N	P	0.1164	mg/l	9/14/2017 10:00:17
0.2PPM	A	Ammonia-N	P	0.213	mg/l	9/14/2017 10:00:18
0.4PPM	A	Ammonia-N	P	0.3871	mg/l	9/14/2017 10:00:19
1.0PPM	A	Ammonia-N	P	0.9685	mg/l	9/14/2017 10:00:20
1.3PPM	A	Ammonia-N	P	1.3294	mg/l	9/14/2017 10:00:21
2.0PPM	A	Ammonia-N	P	2.0188	mg/l	9/14/2017 10:00:22
ICV1	S	Ammonia-N	P	0.9408	mg/l	9/14/2017 10:31:41
ICB1	S	Ammonia-N	P	0.0152	mg/l	9/14/2017 10:31:42
CCV1	S	Ammonia-N	P	0.9788	mg/l	9/14/2017 10:31:43
CCB1	S	Ammonia-N	P	0.0127	mg/l	9/14/2017 10:31:44
PB102321BL	S	Ammonia-N	P	0.0114	mg/l	9/14/2017 10:31:45
PB102321BS	S	Ammonia-N	P	0.9254	mg/l	9/14/2017 10:31:46
I5219-01	S	Ammonia-N	P	0.3153	mg/l	9/14/2017 10:31:47
I5219-01DUP	S	Ammonia-N	P	0.2811	mg/l	9/14/2017 10:31:48
I5219-01MS	S	Ammonia-N	P	1.2179	mg/l	9/14/2017 10:31:49
I5219-01MSD	S	Ammonia-N	P	1.1567	mg/l	9/14/2017 10:31:50
CCV2	S	Ammonia-N	P	1.0388	mg/l	9/14/2017 10:31:51
CCB2	S	Ammonia-N	P	0.0099	mg/l	9/14/2017 10:31:52

LB90066

=====
Calibration results

Aquakem 7.2AQ1

Page: 1

CHEMTECH
284 Sheffield Street,
Mountainside, NJ 07092
Reviewed by : DP

9/14/2017 10:03

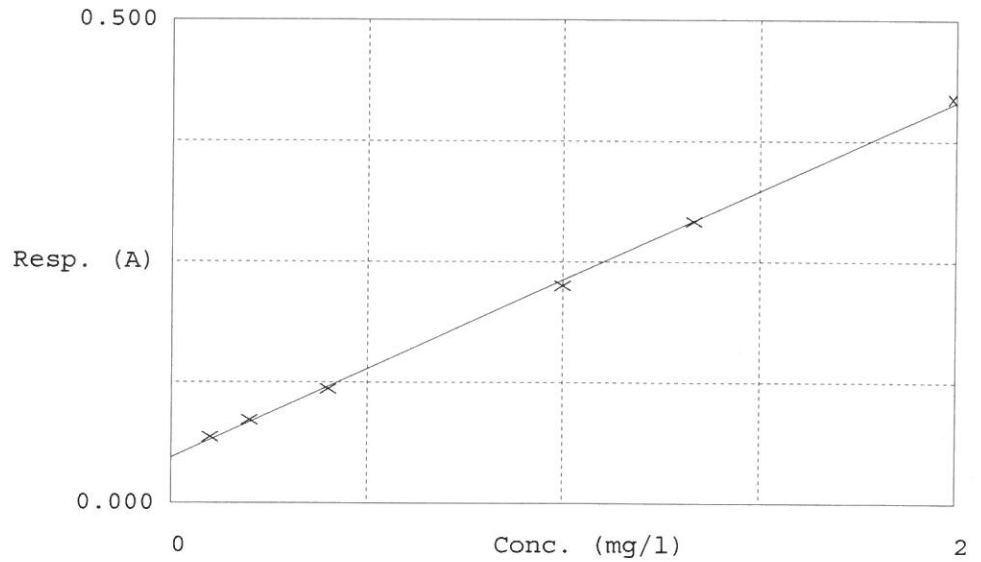
Test Ammonia-N

Accepted 9/14/2017 10:03

Factor 5.43
Bias 0.047

Coeff. of det. 0.999290

Errors



	Calibrator	Response	Calc. con.	Conc.	Errors
1	NH3-2PPM	0.068	0.1164	0.1000	
2	NH3-2PPM	0.086	0.2130	0.2000	
3	NH3-2PPM	0.118	0.3871	0.4000	
4	NH3-2PPM	0.225	0.9685	1.0000	
5	NH3-2PPM	0.292	1.3294	1.3333	
6	NH3-2PPM	0.419	2.0188	2.0000	