

Data Path : Z:\HPCHEM1\BNA_B\DATA\BB101916\
 Data File : BB058655.D
 Acq On : 19 Oct 2016 16:44
 Operator : UM/SJ
 Sample : MDL-02-S
 Misc :
 ALS Vial : 10 Sample Multiplier: 1

Instrument :
 BNA_B
 ClientSampleId :
 MDL-02-S

Manual Integrations
 APPROVED

umangi
 10/20/2016 5:02:24 PM

Quant Time: Oct 20 16:19:40 2016
 Quant Method : Z:\HPCHEM1\BNA_B\METHOD\SOM02.2-EPA-BB101916-MA.M
 Quant Title : SVOA CALIBRATION
 QLast Update : Thu Oct 20 04:20:07 2016
 Response via : Initial Calibration

Internal Standards	R.T.	QIon	Response	Conc	Units	Dev(Min)
1) 1,4-Dichlorobenzene-d4	8.68	152	508800	20.00	ng/ul	0.00
7) Naphthalene-d8	11.64	136	1988929	20.00	ng/ul	0.00
13) Acenaphthene-d10	15.59	164	1117934	20.00	ng/ul	0.00
18) Phenanthrene-d10	18.42	188	1705099	20.00	ng/ul	0.00
23) Chrysene-d12	22.79	240	1801620	20.00	ng/ul	0.00
25) Perylene-d12	25.87	264	1232127	20.00	ng/ul	0.00

System Monitoring Compounds

2) 1,4-Dioxane-d8	3.67	96	95785	8.18	ng/uL	0.02
3) Phenol-d5	7.81	99	1394602	35.81	ng/ul	0.00
4) Bis-(2-Chloroethyl)ether-d	7.97	67	1071422	39.06	ng/ul	0.00
5) 2-Chlorophenol-d4	8.20	132	1429097	36.99	ng/ul	0.00
6) 4-Methylphenol-d8	9.45	113	1124585	35.86	ng/ul	0.00
8) Nitrobenzene-d5	9.91	128	745198	37.48	ng/ul	0.02
9) 2-Nitrophenol-d4	10.68	143	815513	37.72	ng/ul	0.02
10) 2,4-Dichlorophenol-d3	11.24	165	1022194	34.34	ng/ul	0.00
11) 4-Chloroaniline-d4	11.76	131	1517337	39.87	ng/ul	0.00
14) Dimethylphthalate-d6	14.97	166	2870529	38.78	ng/ul	0.02
15) Acenaphthylene-d8	15.26	160	3220353	36.99	ng/ul	0.00
16) 4-Nitrophenol-d4	15.78	143	570593	34.19	ng/ul	0.00
17) Fluorene-d10	16.61	176	2289001	37.96	ng/ul	0.00
19) 4,6-Dinitro-2-methylphenol	16.73	200	552790	30.86	ng/ul	0.00
20) Anthracene-d10	18.53	188	3128106m	40.36	ng/ul	0.11
24) Pyrene-d10	20.86	212	3067201	38.24	ng/ul	0.00
26) Benzo(a)pyrene-d12	25.68	264	2171134	39.09	ng/ul	0.02

Target Compounds

					Qvalue
12) 1-Methylnaphthalene	13.57	142	210815	3.35	ng/ul 94
21) 1,2,3,4-Tetrachlorobenzene	14.36	216	94627	3.14	ng/uL 97
22) Pentachlorobenzene	15.94	250	86041	2.93	ng/uL 98

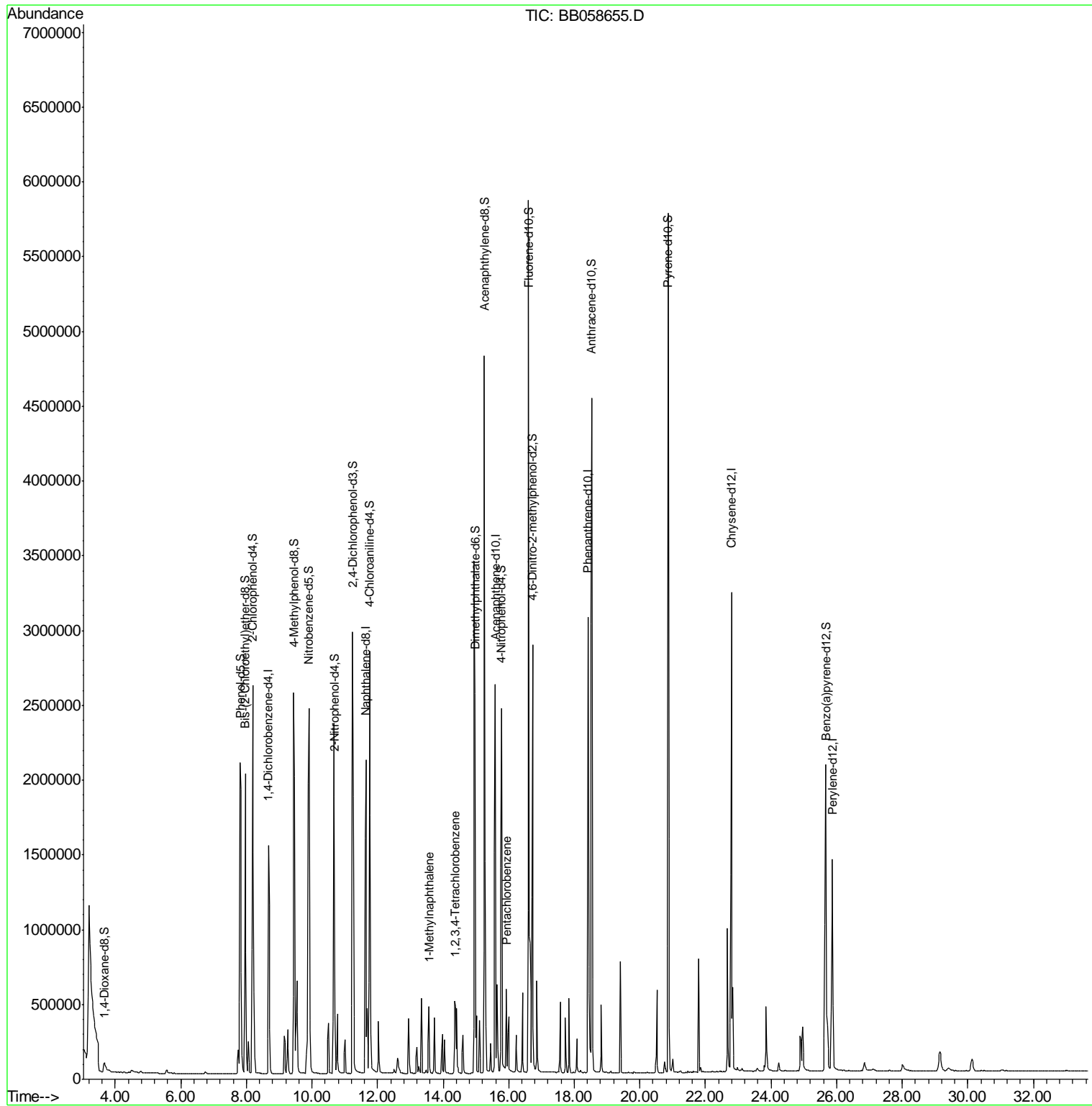
(#) = qualifier out of range (m) = manual integration (+) = signals summed

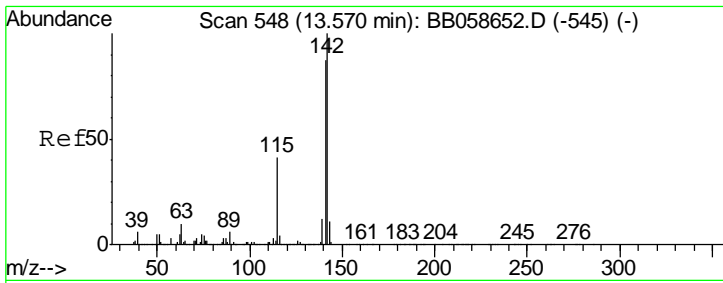
Data Path : Z:\HPCHEM1\BNA_B\DATA\BB101916\
 Data File : BB058655.D
 Acq On : 19 Oct 2016 16:44
 Operator : UM/SJ
 Sample : MDL-02-S
 Misc :
 ALS Vial : 10 Sample Multiplier: 1

Instrument :
 BNA_B
Client Sampled :
 MDL-02-S

Manual Integrations
APPROVED
 umangi
 10/20/2016 5:02:24 PM

Quant Time: Oct 20 16:19:40 2016
 Quant Method : Z:\HPCHEM1\BNA_B\METHOD\SOM02.2-EPA-BB101916-MA.M
 Quant Title : SVOA CALIBRATION
 QLast Update : Thu Oct 20 04:20:07 2016
 Response via : Initial Calibration





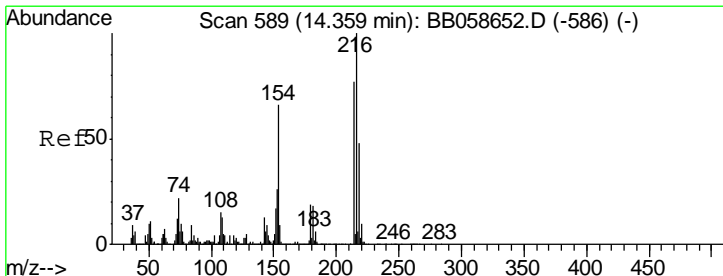
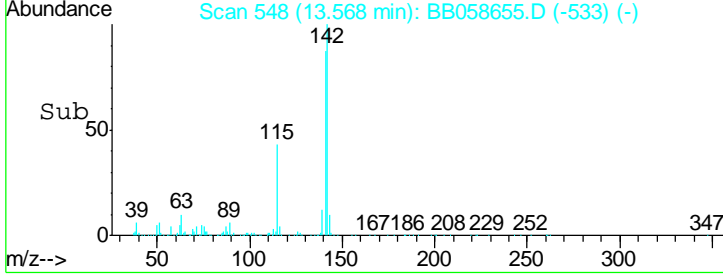
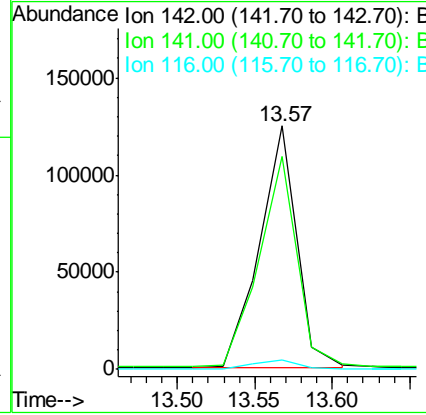
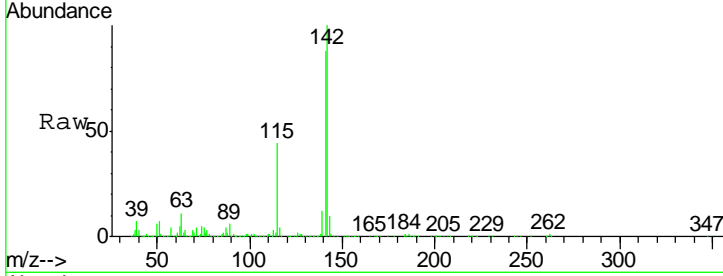
#12
 1-Methylnaphthalene
 Concen: 3.35 ng/ul
 RT: 13.57 min Scan# 548
 Delta R.T. -0.00 min
 Lab File: BB058655.D
 Acq: 19 Oct 2016 16:44

Instrument :
 BNA_B
ClientSampled :
 MDL-02-S

Tgt Ion	Resp	Lower	Upper
142	100		
141	87.5	74.9	112.3
116	3.9	3.1	4.7

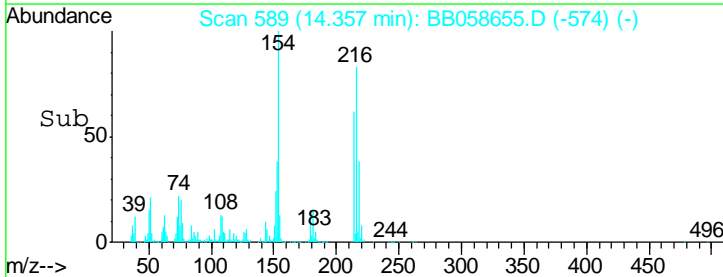
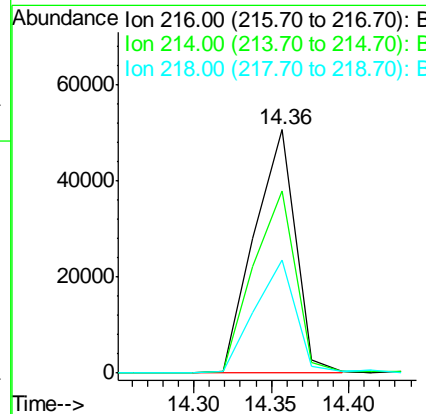
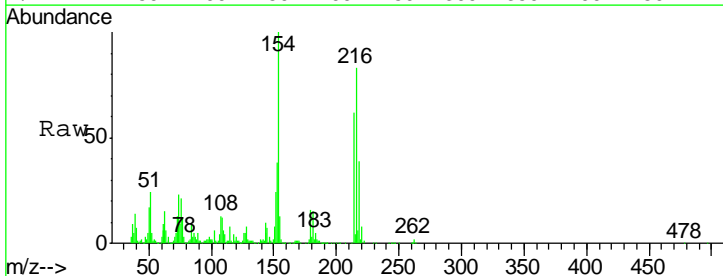
Manual Integrations
APPROVED

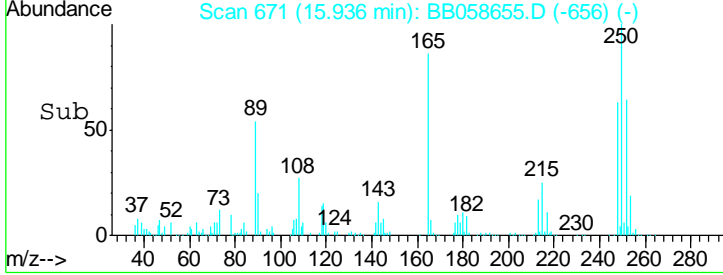
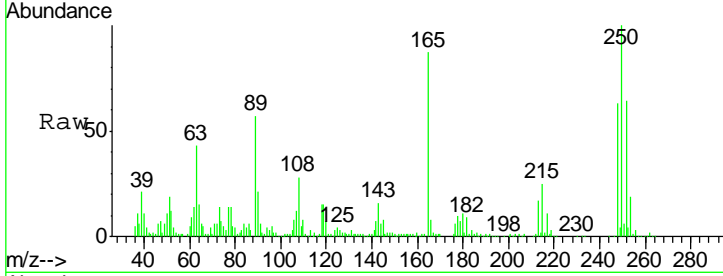
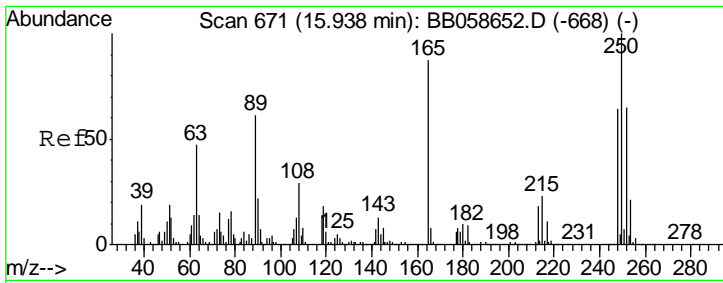
umangi
 10/20/2016 5:02:24 PM



#21
 1,2,3,4-Tetrachlorobenzene
 Concen: 3.14 ng/uL
 RT: 14.36 min Scan# 589
 Delta R.T. -0.00 min
 Lab File: BB058655.D
 Acq: 19 Oct 2016 16:44

Tgt Ion	Resp	Lower	Upper
216	100		
214	74.8	62.5	93.7
218	46.7	38.4	57.6





#22
 Pentachlorobenzene
 Concen: 2.93 ng/uL
 RT: 15.94 min Scan# 671
 Delta R.T. -0.00 min
 Lab File: BB058655.D
 Acq: 19 Oct 2016 16:44

Tgt Ion	Resp	Lower	Upper
250	86041		
250	100		
248	63.0	50.6	75.8
252	67.4	51.4	77.0

Instrument :
 BNA_B
ClientSampled :
 MDL-02-S

Manual Integrations
APPROVED
 umangi
 10/20/2016 5:02:24 PM

