

Data Path : Z:\SVOASRV\HPCHEM1\BNA E\DATA\BE011020\
 Data File : BE101019.D
 Acq On : 10 Jan 2020 10:27
 Operator : JU
 Sample : SSTDCCC0.4
 Misc :
 ALS Vial : 2 Sample Multiplier: 1

Instrument :
 BNA_E
 ClientSampleId :
 SSTDCCC0.4

Quant Time: Jan 10 12:55:59 2020
 Quant Method : Z:\svoasrv\HPCHEM1\BNA E\Methods\8270-SIM-BE010820.M
 Quant Title : ASP BNA STANDARDS FOR 5 POINT CALIBRATION
 QLast Update : Wed Jan 08 18:36:25 2020
 Response via : Initial Calibration

Internal Standards	R.T.	QIon	Response	Conc	Units	Dev(Min)
1) 1,4-Dichlorobenzene-d4	7.73	152	3247	0.40	ng	0.00
7) Naphthalene-d8	10.50	136	14774	0.40	ng	0.00
13) Acenaphthene-d10	14.36	164	8975	0.40	ng	0.00
19) Phenanthrene-d10	17.09	188	19397	0.40	ng	0.00
27) Chrysene-d12	21.28	240	15956	0.40	ng	0.00
34) Perylene-d12	23.70	264	18149	0.40	ng	0.00

System Monitoring Compounds

4) 2-Fluorophenol	5.34	112	2676	0.37	ng	0.00
5) Phenol-d6	6.92	99	3232	0.35	ng	0.00
8) Nitrobenzene-d5	8.87	82	3518m	0.33	ng	0.00
11) 2-Methylnaphthalene-d10	12.11	152	10748	0.38	ng	0.00
14) 2,4,6-Tribromophenol	15.85	330	880m	0.35	ng	0.00
15) 2-Fluorobiphenyl	13.00	172	13701	0.40	ng	0.00
25) Fluoranthene-d10	19.13	212	99413	0.37	ng	0.00
29) Terphenyl-d14	19.74	244	15868	0.41	ng	0.00

Target Compounds

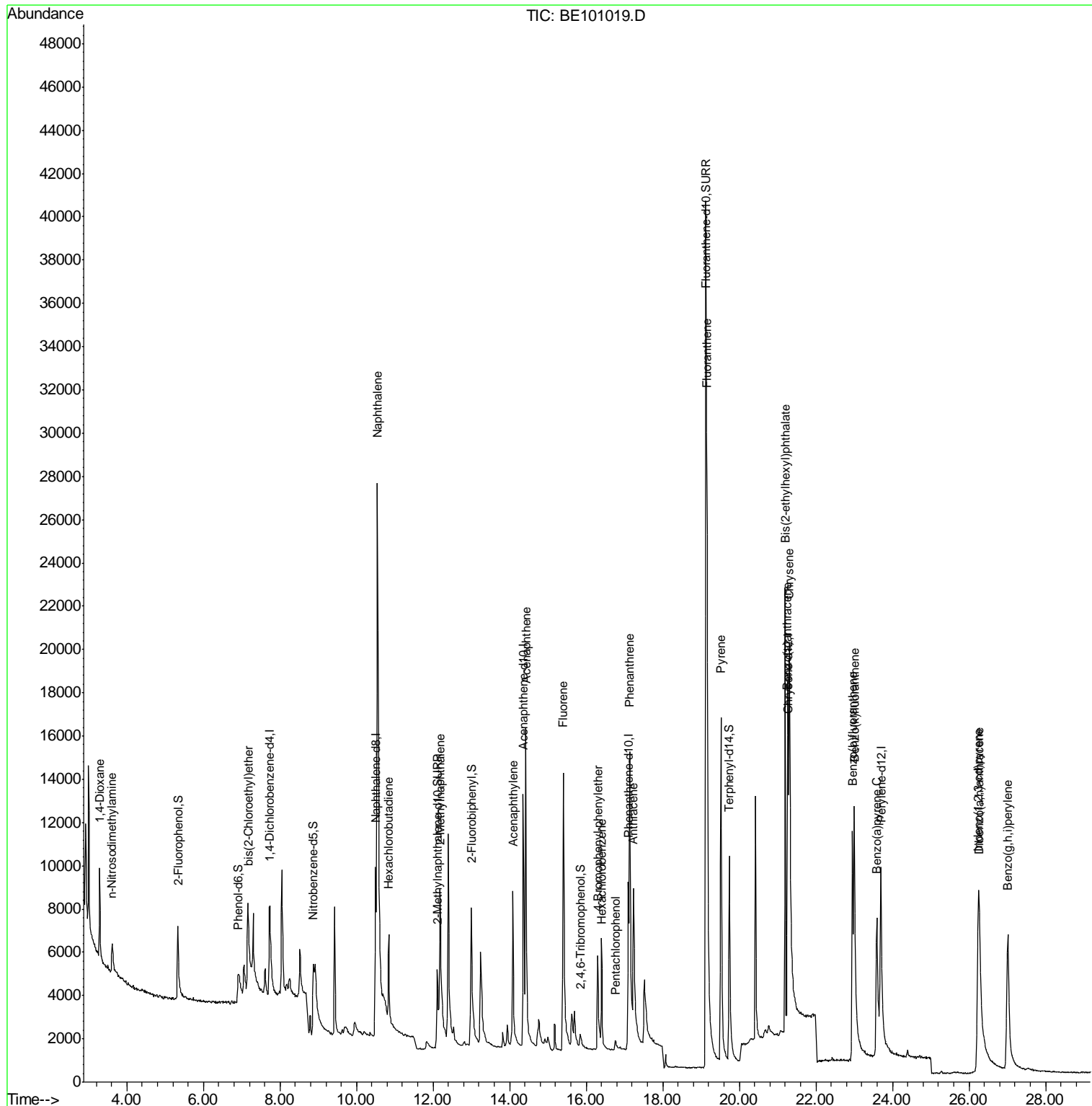
Target Compounds	R.T.	QIon	Response	Conc	Units	Qvalue
2) 1,4-Dioxane	3.29	88	3097	0.393	ng	100
3) n-Nitrosodimethylamine	3.61	42	1609	0.357	ng	# 82
6) bis(2-Chloroethyl)ether	7.17	93	3805	0.346	ng	95
9) Naphthalene	10.55	128	66839	0.407	ng	100
10) Hexachlorobutadiene	10.85	225	2909	0.419	ng	96
12) 2-Methylnaphthalene	12.18	142	9634	0.388	ng	100
16) Acenaphthylene	14.08	152	12464	0.341	ng	99
17) Acenaphthene	14.43	154	10263	0.392	ng	99
18) Fluorene	15.39	166	12909	0.390	ng	98
20) 4-Bromophenyl-phenylether	16.31	248	3588m	0.379	ng	
21) Hexachlorobenzene	16.41	284	4330	0.417	ng	98
22) Pentachlorophenol	16.76	266	589	0.412	ng	99
23) Phenanthrene	17.14	178	20690	0.391	ng	100
24) Anthracene	17.23	178	18572	0.372	ng	99
26) Fluoranthene	19.15	202	24408	0.368	ng	99
28) Pyrene	19.52	202	24499	0.412	ng	100
30) Benzo(a)anthracene	21.26	228	17228m	0.378	ng	
31) Chrysene	21.31	228	30618m	0.452	ng	
32) Bis(2-ethylhexyl)phthalate	21.20	149	24500m	0.323	ng	
33) Indeno(1,2,3-cd)pyrene	26.24	276	22555	0.422	ng	97
35) Benzo(b)fluoranthene	22.95	252	17045	0.335	ng	99
36) Benzo(k)fluoranthene	23.00	252	26970	0.366	ng	98
37) Benzo(a)pyrene	23.59	252	17938	0.364	ng	99
38) Dibenzo(a,h)anthracene	26.27	278	16401m	0.362	ng	
39) Benzo(g,h,i)perylene	27.01	276	20404	0.366	ng	100

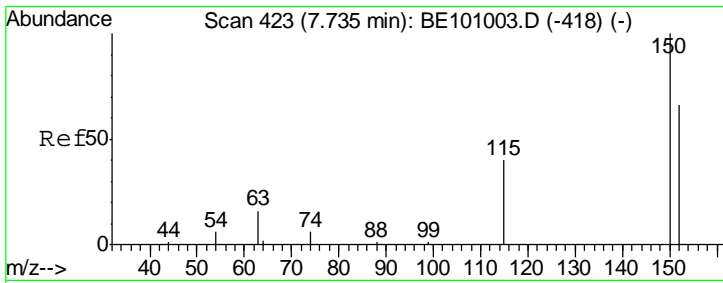
(#) = qualifier out of range (m) = manual integration (+) = signals summed

Data Path : Z:\SVOASRV\HPCHEM1\BNA E\DATA\BE011020\
 Data File : BE101019.D
 Acq On : 10 Jan 2020 10:27
 Operator : JU
 Sample : SSTDCCC0.4
 Misc :
 ALS Vial : 2 Sample Multiplier: 1

Instrument :
 BNA_E
 Client Sampled :
 SSTDCCC0.4

Quant Time: Jan 10 12:55:59 2020
 Quant Method : Z:\svoasrv\HPCHEM1\BNA E\Methods\8270-SIM-BE010820.M
 Quant Title : ASP BNA STANDARDS FOR 5 POINT CALIBRATION
 QLast Update : Wed Jan 08 18:36:25 2020
 Response via : Initial Calibration

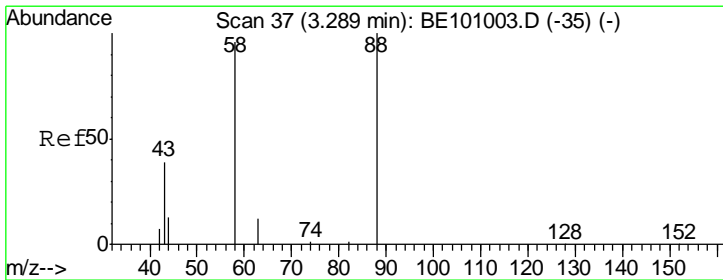
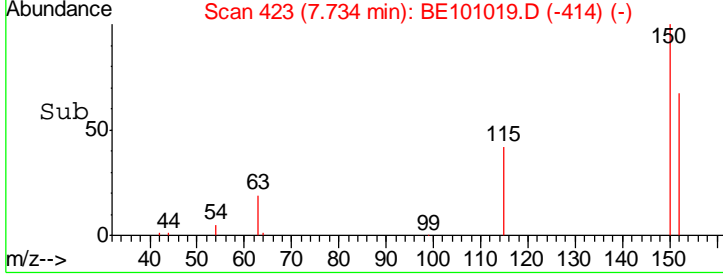
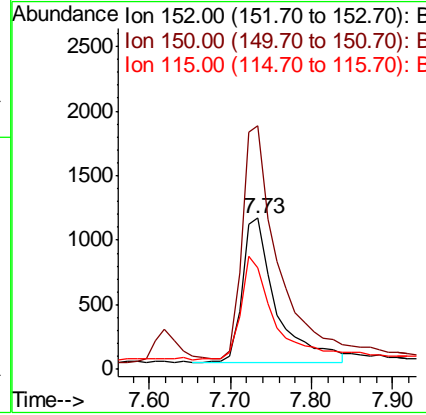
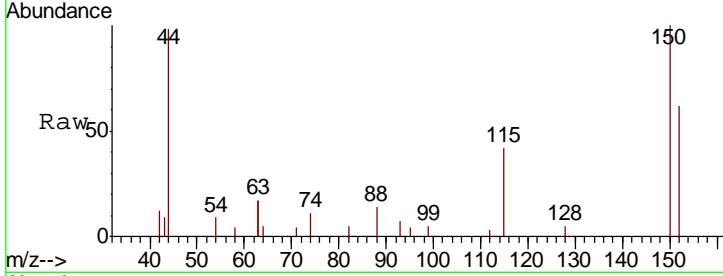




#1
 1,4-Dichlorobenzene-d4
 Concen: 0.400 ng
 RT: 7.73 min Scan# 423
 Delta R.T. -0.00 min
 Lab File: BE101019.D
 Acq: 10 Jan 2020 10:27

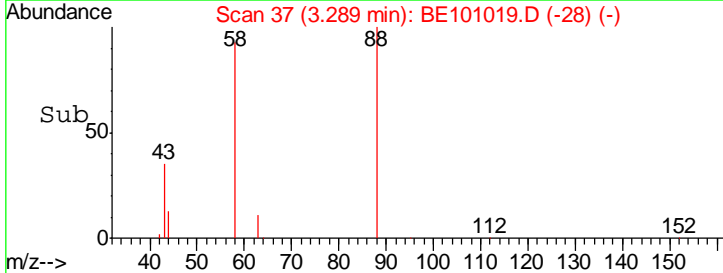
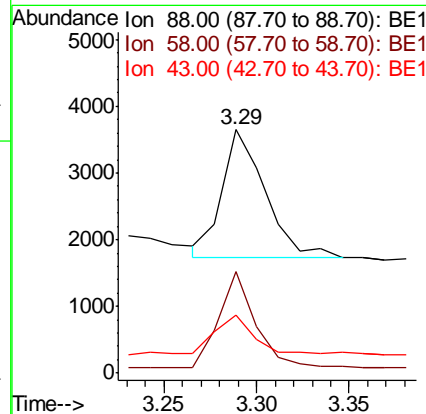
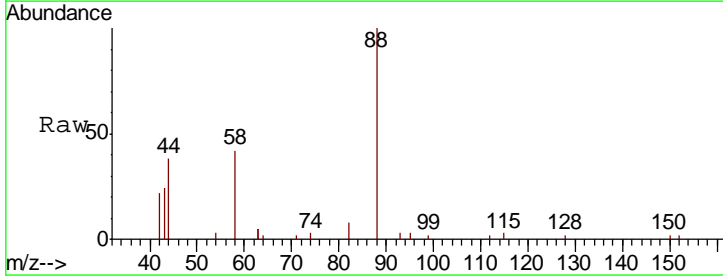
Instrument :
 BNA_E
 ClientSampleId :
 SSTDCCC0.4

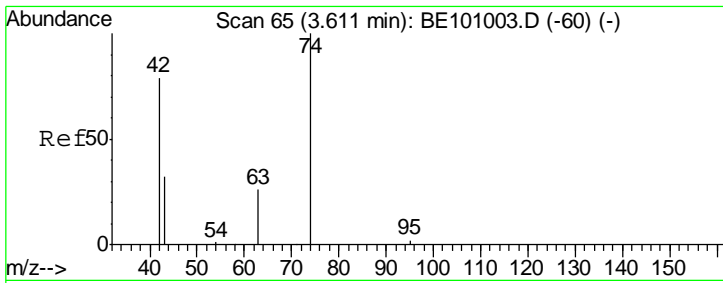
Tgt Ion	Resp	Lower	Upper
152	100		
150	161.5	120.3	180.5
115	67.1	51.7	77.5



#2
 1,4-Dioxane
 Concen: 0.393 ng
 RT: 3.29 min Scan# 37
 Delta R.T. 0.00 min
 Lab File: BE101019.D
 Acq: 10 Jan 2020 10:27

Tgt Ion	Resp	Lower	Upper
88	100		
58	66.3	53.0	79.4
43	29.5	23.4	35.2

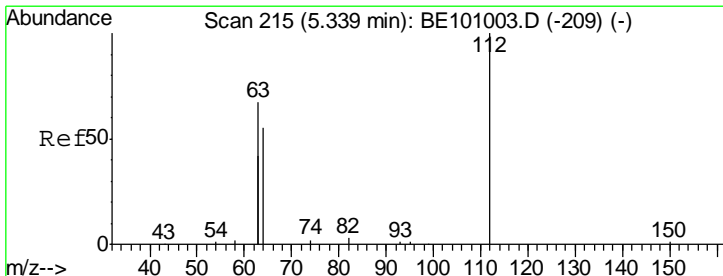
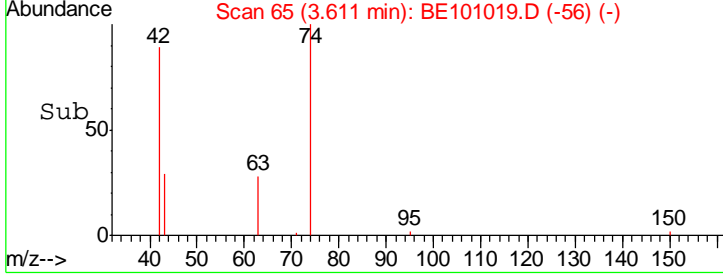
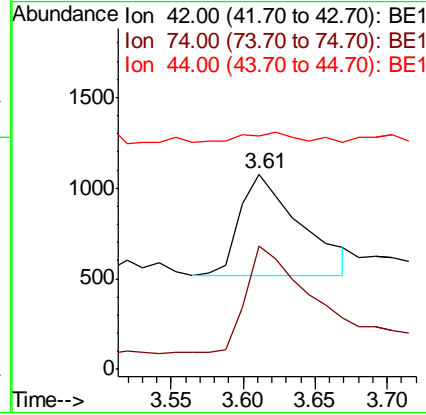
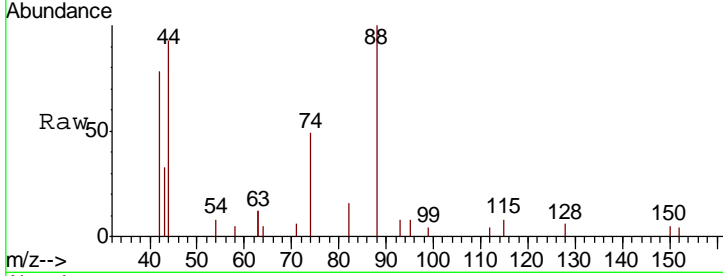




#3
 n-Nitrosodimethylamine
 Concen: 0.357 ng
 RT: 3.61 min Scan# 65
 Delta R.T. -0.00 min
 Lab File: BE101019.D
 Acq: 10 Jan 2020 10:27

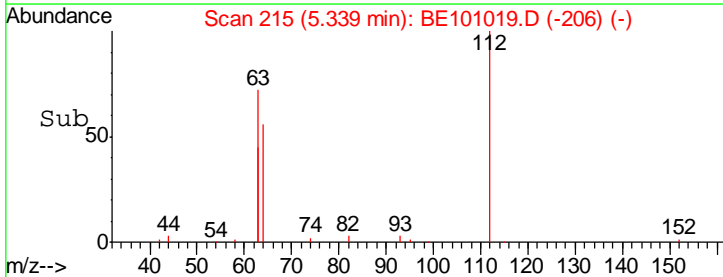
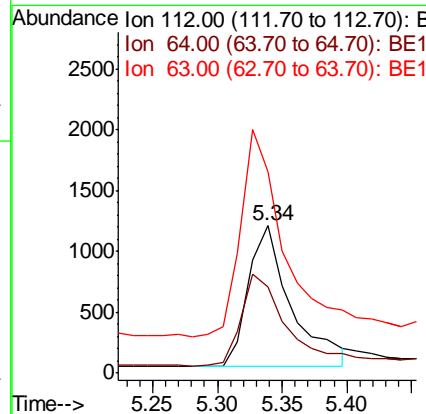
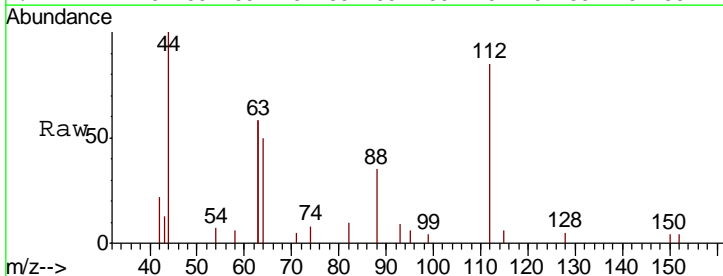
Instrument :
 BNA_E
ClientSampled :
 SSTDCCC0.4

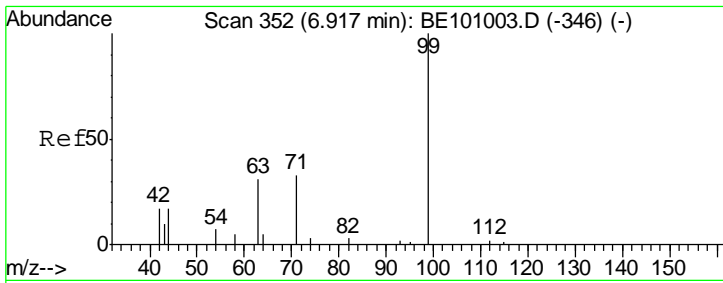
Tgt Ion	Resp	Lower	Upper
42	1609		
74	109.6	105.7	158.5
44	8.3	10.0	15.0#



#4
 2-Fluorophenol
 Concen: 0.366 ng
 RT: 5.34 min Scan# 215
 Delta R.T. -0.00 min
 Lab File: BE101019.D
 Acq: 10 Jan 2020 10:27

Tgt Ion	Resp	Lower	Upper
112	2676		
64	69.1	53.6	80.4
63	147.5	114.6	172.0

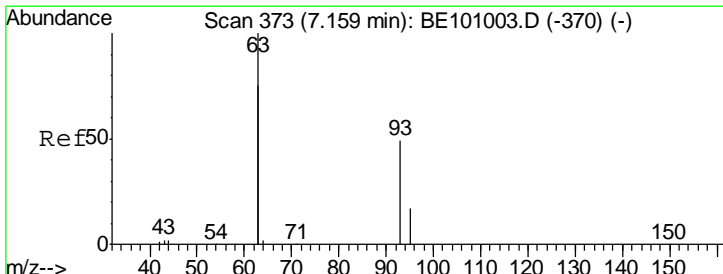
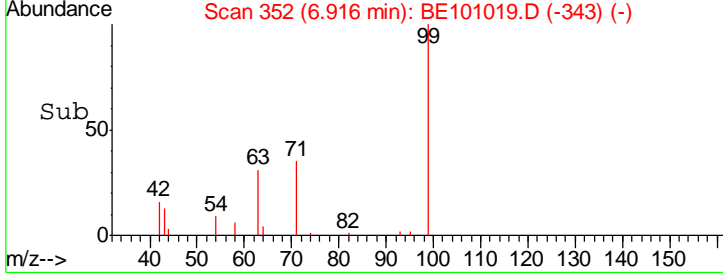
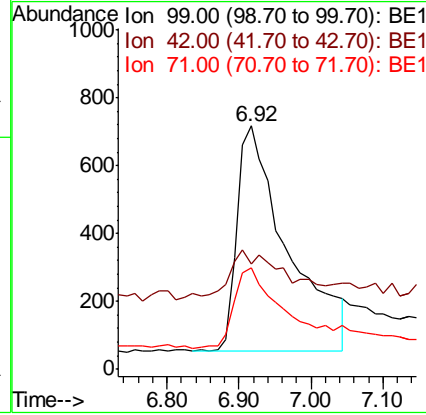
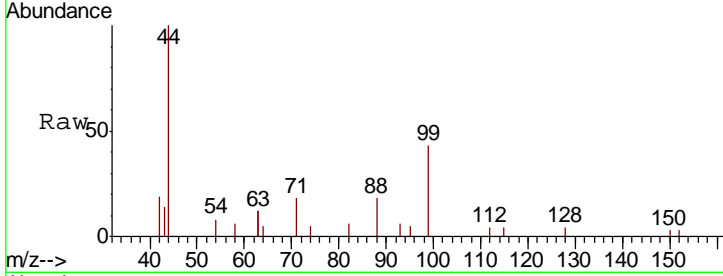




#5
 Phenol-d6
 Concen: 0.350 ng
 RT: 6.92 min Scan# 352
 Delta R.T. -0.00 min
 Lab File: BE101019.D
 Acq: 10 Jan 2020 10:27

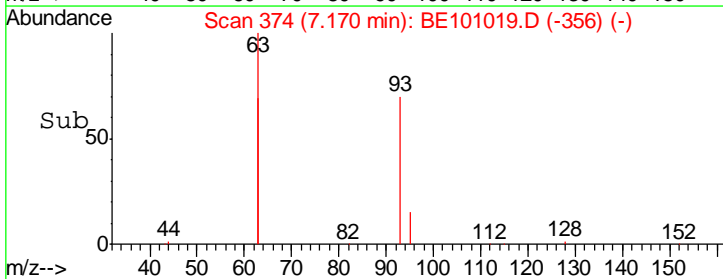
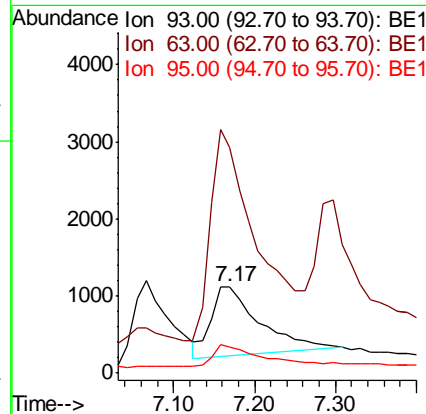
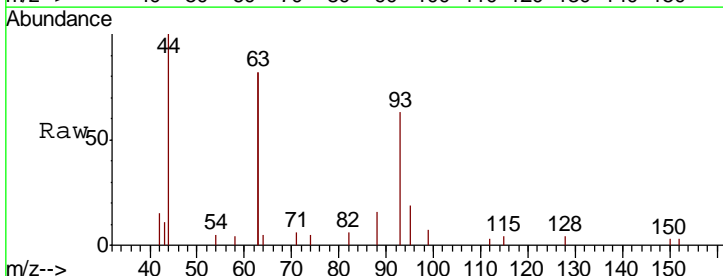
Instrument :
 BNA_E
ClientSampleId :
 SSTDCCC0.4

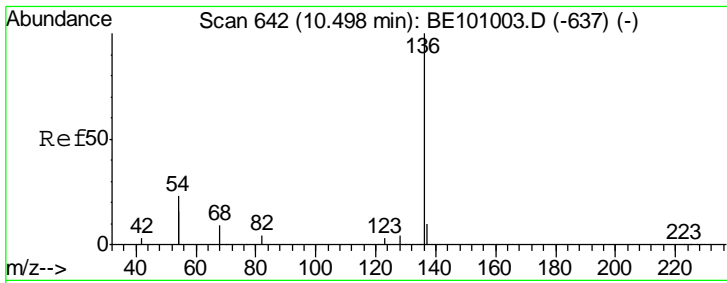
Tgt Ion	Resp	Lower	Upper
99	3232		
42	20.3	18.3	27.5
71	35.8	28.0	42.0



#6
 bis(2-Chloroethyl)ether
 Concen: 0.346 ng
 RT: 7.17 min Scan# 374
 Delta R.T. 0.01 min
 Lab File: BE101019.D
 Acq: 10 Jan 2020 10:27

Tgt Ion	Resp	Lower	Upper
93	3805		
63	282.1	233.9	350.9
95	32.6	23.5	35.3

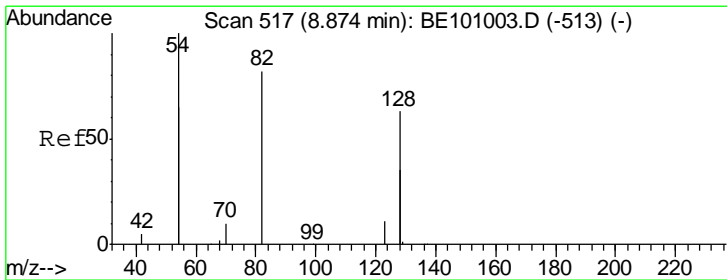
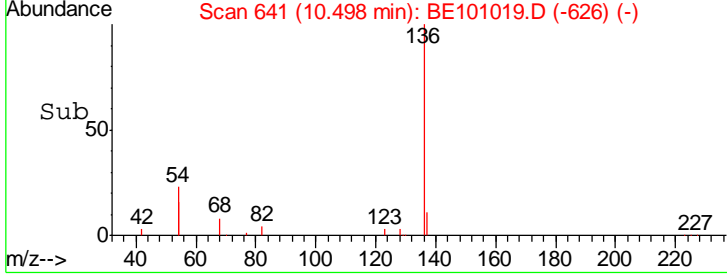
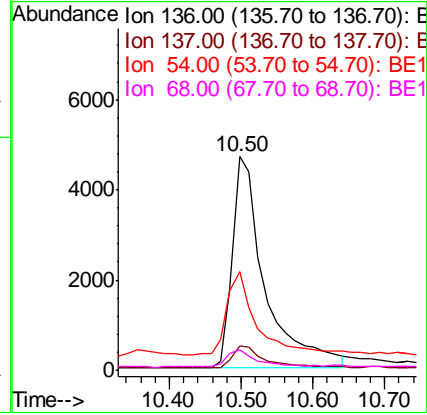
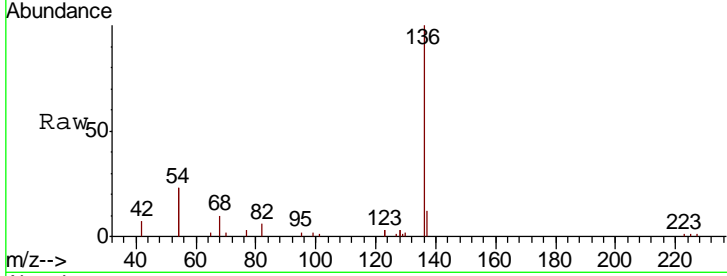




#7
 Naphthalene-d8
 Concen: 0.400 ng
 RT: 10.50 min Scan# 641
 Delta R.T. -0.00 min
 Lab File: BE101019.D
 Acq: 10 Jan 2020 10:27

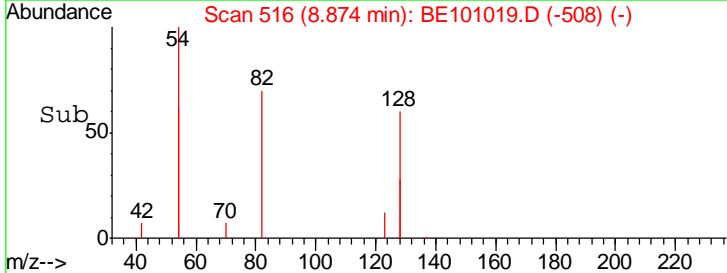
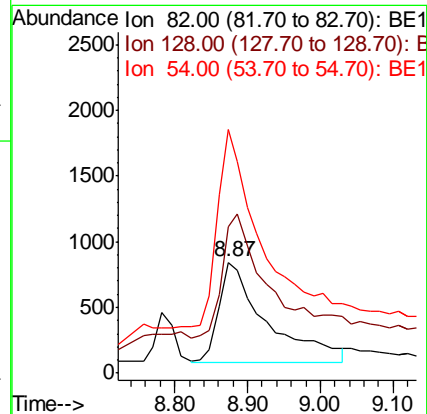
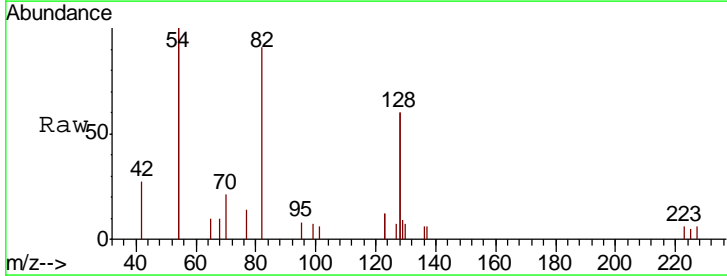
Instrument :
 BNA_E
ClientSampled :
 SSTDCCC0.4

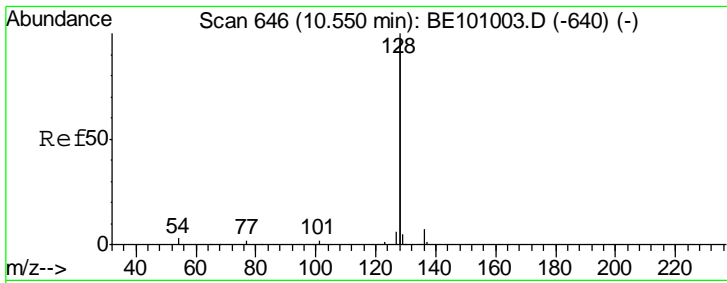
Tgt Ion	Resp	Lower	Upper
136	14774		
137	11.6	9.3	13.9
54	46.1	36.8	55.2
68	9.7	8.4	12.6



#8
 Nitrobenzene-d5
 Concen: 0.333 ng m
 RT: 8.87 min Scan# 516
 Delta R.T. -0.00 min
 Lab File: BE101019.D
 Acq: 10 Jan 2020 10:27

Tgt Ion	Resp	Lower	Upper
82	3518		
82	100		
128	65.7	109.8	164.6#
54	109.6	174.5	261.7#

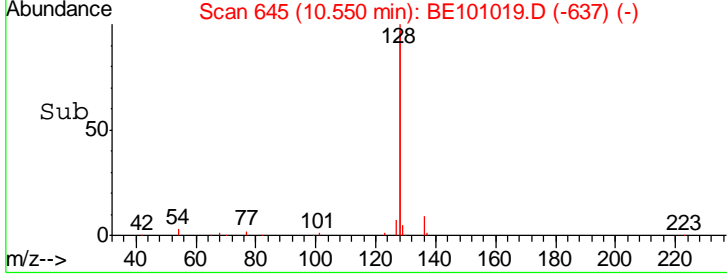
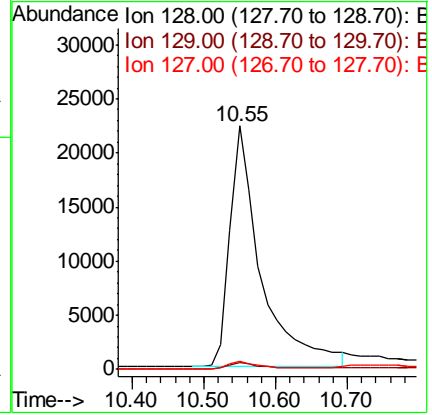
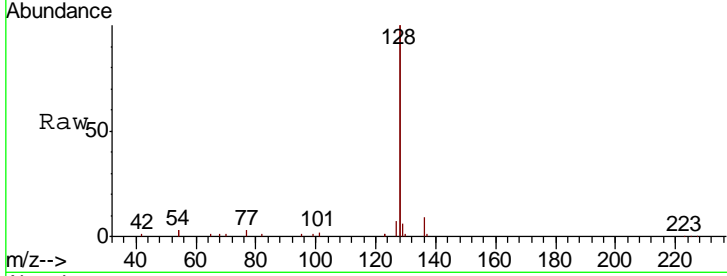




#9
 Naphthalene
 Concen: 0.407 ng
 RT: 10.55 min Scan# 645
 Delta R.T. -0.00 min
 Lab File: BE101019.D
 Acq: 10 Jan 2020 10:27

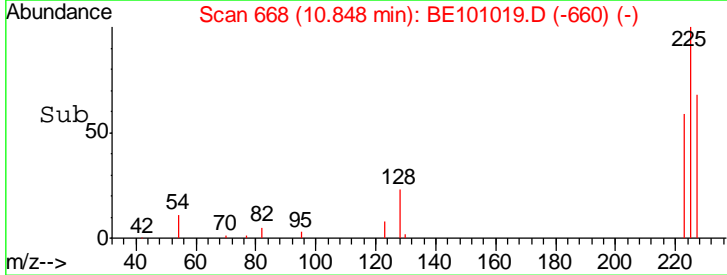
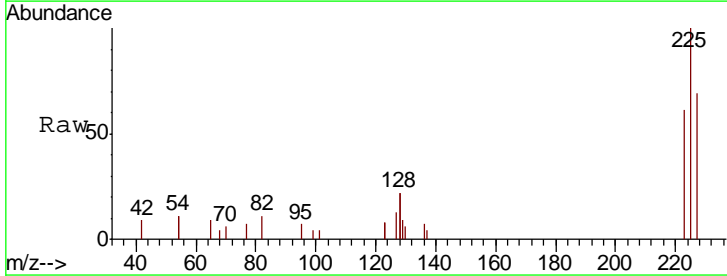
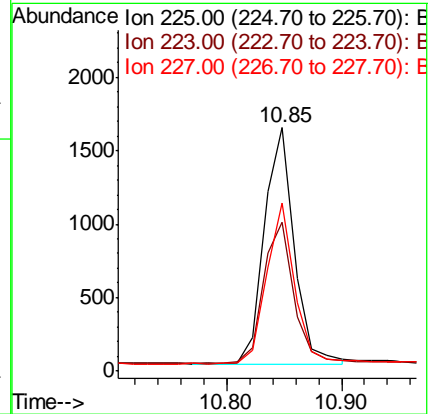
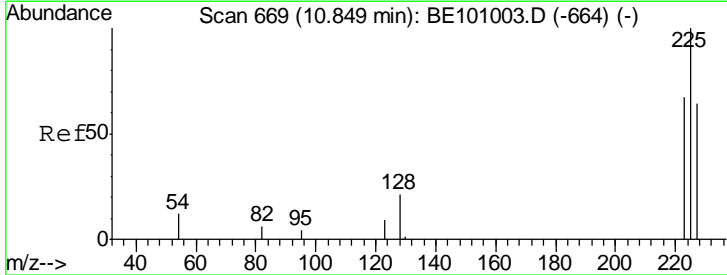
Instrument :
 BNA_E
ClientSampleId :
 SSTDCCC0.4

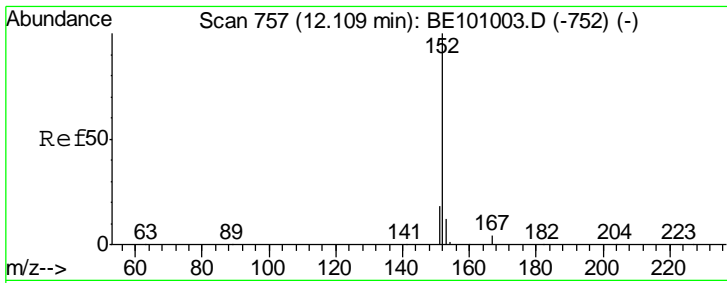
Tgt Ion	Resp	Lower	Upper
128	66839		
129	3.0	2.3	3.5
127	3.5	2.7	4.1



#10
 Hexachlorobutadiene
 Concen: 0.419 ng
 RT: 10.85 min Scan# 668
 Delta R.T. -0.00 min
 Lab File: BE101019.D
 Acq: 10 Jan 2020 10:27

Tgt Ion	Resp	Lower	Upper
225	2909		
223	61.0	52.2	78.4
227	64.3	49.9	74.9

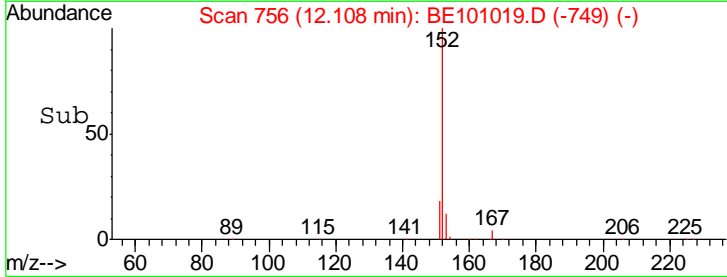
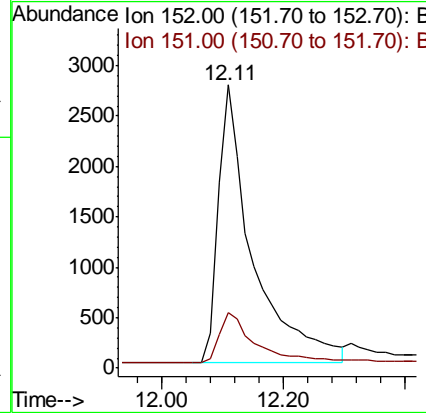
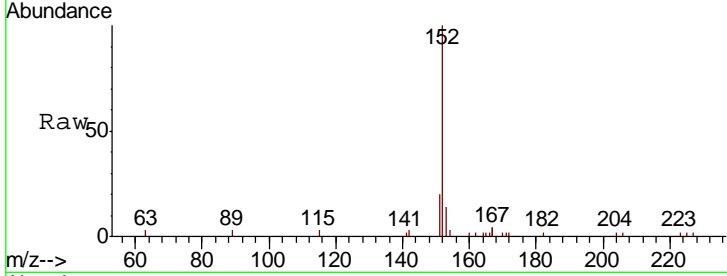




#11
 2-Methylnaphthalene-d10
 Concen: 0.381 ng
 RT: 12.11 min Scan# 756
 Delta R.T. -0.00 min
 Lab File: BE101019.D
 Acq: 10 Jan 2020 10:27

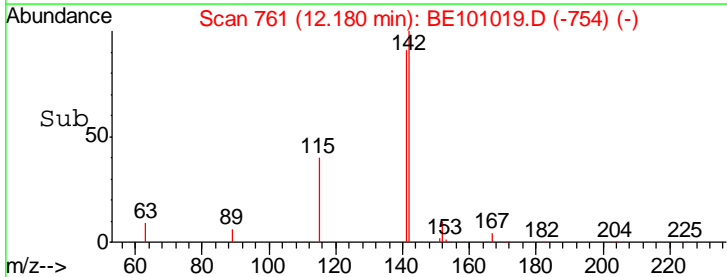
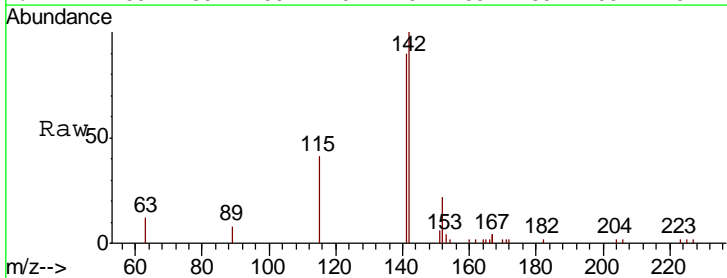
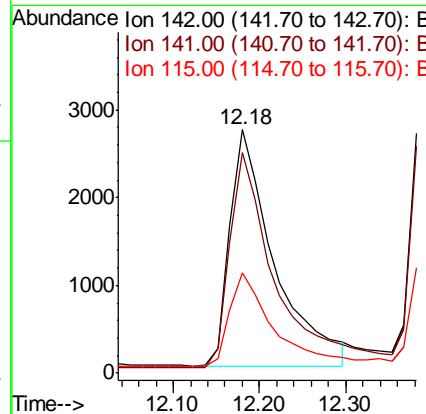
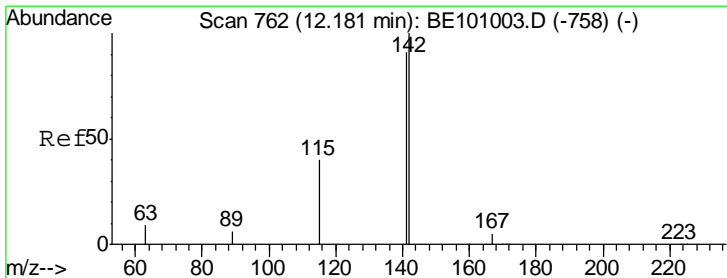
Instrument :
 BNA_E
 ClientSampleId :
 SSTDCCC0.4

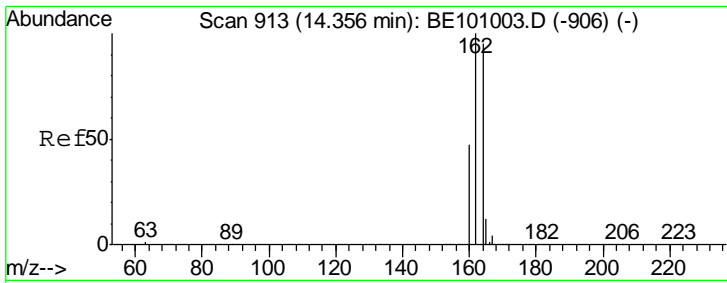
Tgt Ion	Resp	Lower	Upper
152	10748		
151	20.1	15.0	22.6



#12
 2-Methylnaphthalene
 Concen: 0.388 ng
 RT: 12.18 min Scan# 761
 Delta R.T. -0.00 min
 Lab File: BE101019.D
 Acq: 10 Jan 2020 10:27

Tgt Ion	Resp	Lower	Upper
142	9634		
141	90.4	72.5	108.7
115	41.1	33.0	49.6

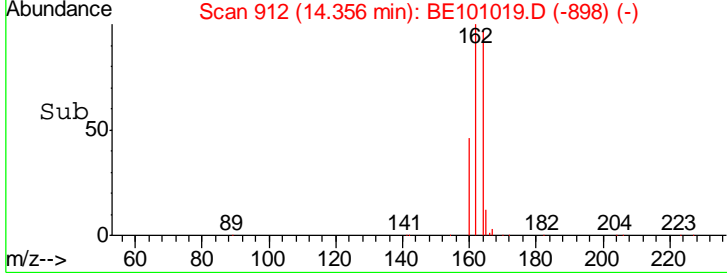
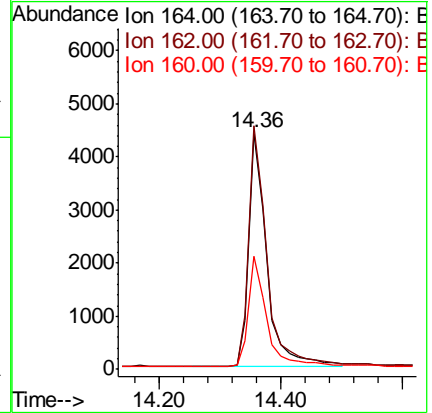
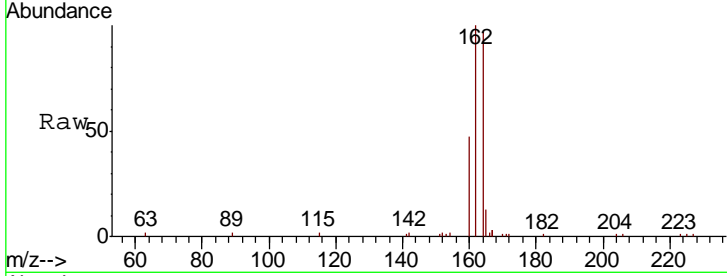




#13
 Acenaphthene-d10
 Concen: 0.400 ng
 RT: 14.36 min Scan# 912
 Delta R.T. -0.00 min
 Lab File: BE101019.D
 Acq: 10 Jan 2020 10:27

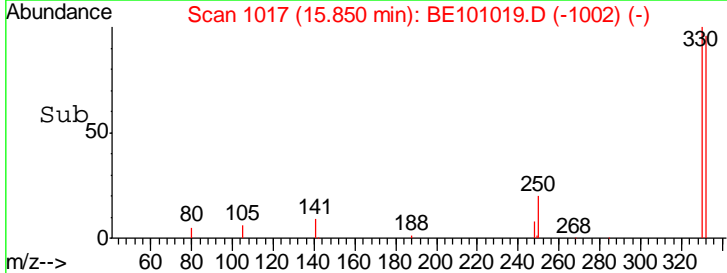
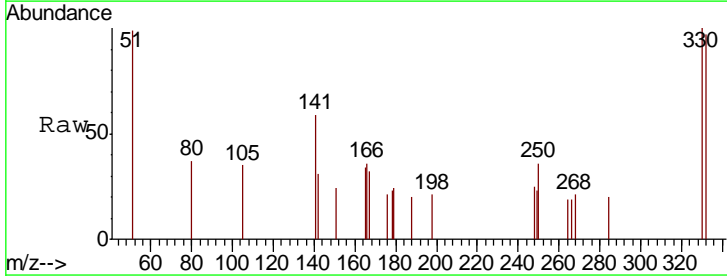
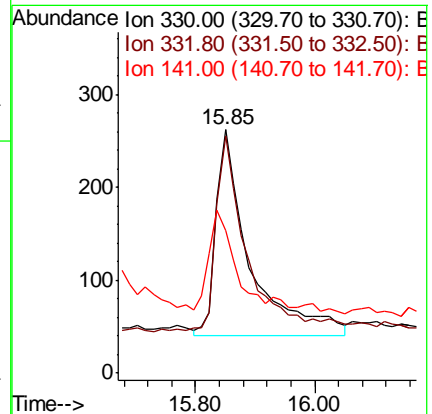
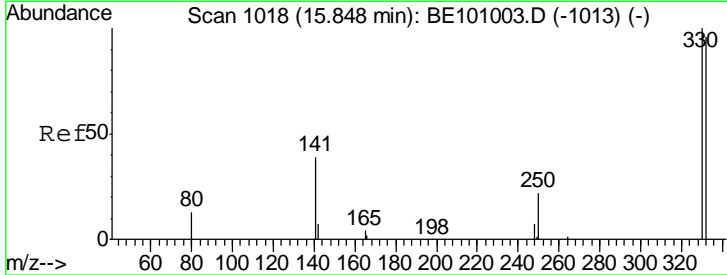
Instrument :
 BNA_E
 ClientSampleId :
 SSTDCCC0.4

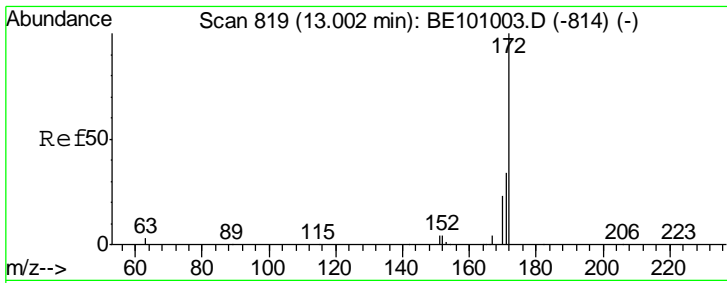
Tgt Ion	Resp	Lower	Upper
164	100		
162	103.2	84.1	126.1
160	48.1	40.4	60.6



#14
 2,4,6-Tribromophenol
 Concen: 0.347 ng m
 RT: 15.85 min Scan# 1017
 Delta R.T. 0.00 min
 Lab File: BE101019.D
 Acq: 10 Jan 2020 10:27

Tgt Ion	Resp	Lower	Upper
330	100		
332	81.7	78.4	117.6
141	38.2	37.0	55.4

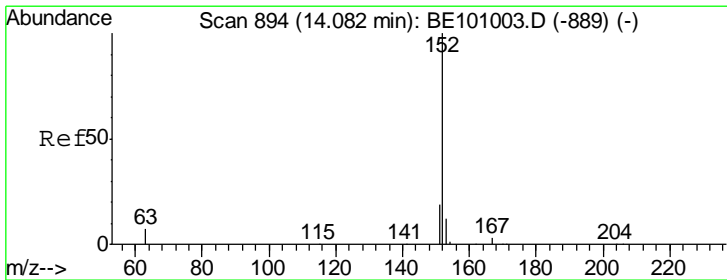
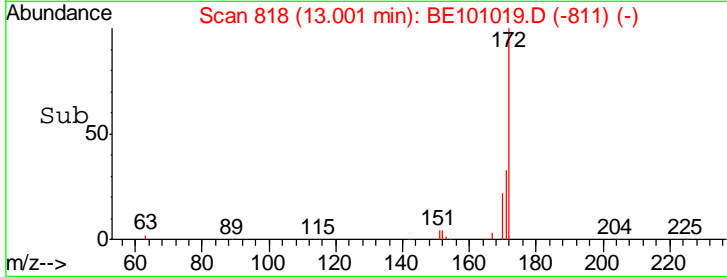
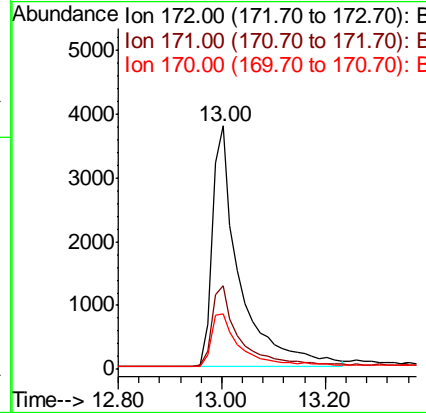
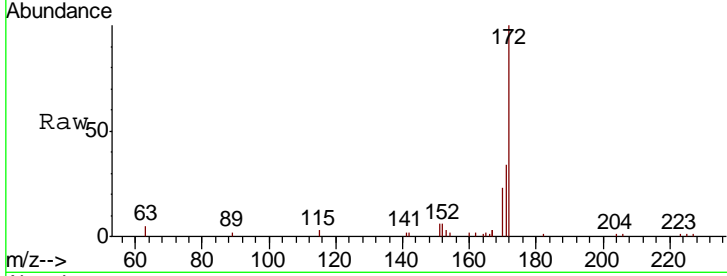




#15
 2-Fluorobiphenyl
 Concen: 0.402 ng
 RT: 13.00 min Scan# 818
 Delta R.T. -0.00 min
 Lab File: BE101019.D
 Acq: 10 Jan 2020 10:27

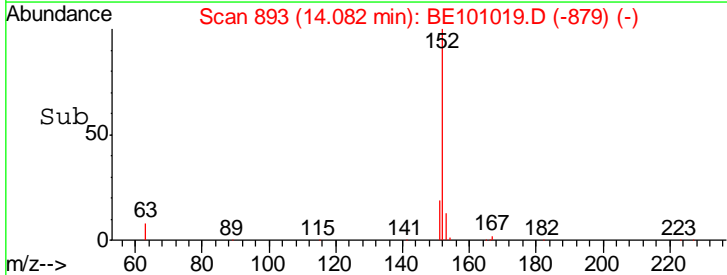
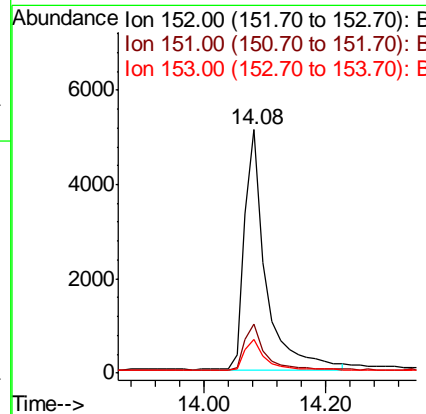
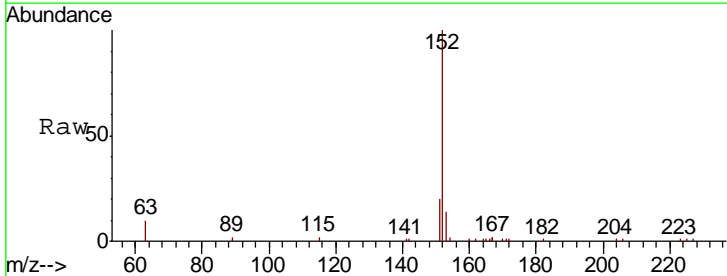
Instrument :
 BNA_E
 ClientSampleId :
 SSTDCCC0.4

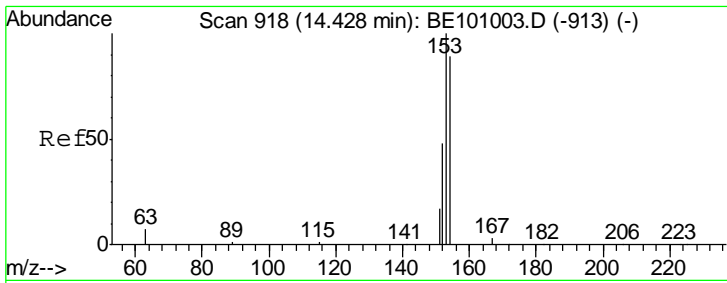
Tgt Ion	Resp	Lower	Upper
172	13701		
171	34.3	28.2	42.2
170	22.9	18.9	28.3



#16
 Acenaphthylene
 Concen: 0.341 ng
 RT: 14.08 min Scan# 893
 Delta R.T. -0.00 min
 Lab File: BE101019.D
 Acq: 10 Jan 2020 10:27

Tgt Ion	Resp	Lower	Upper
152	12464		
151	19.6	15.5	23.3
153	13.7	10.4	15.6

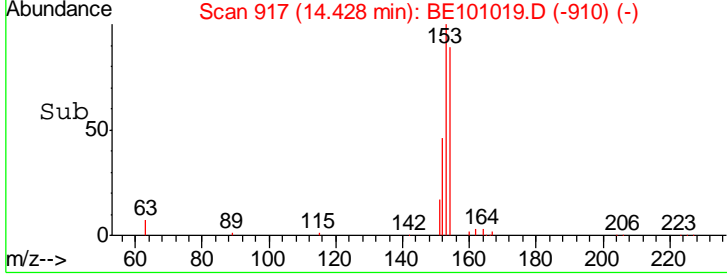
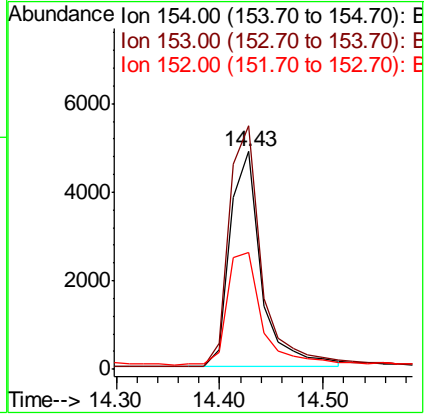
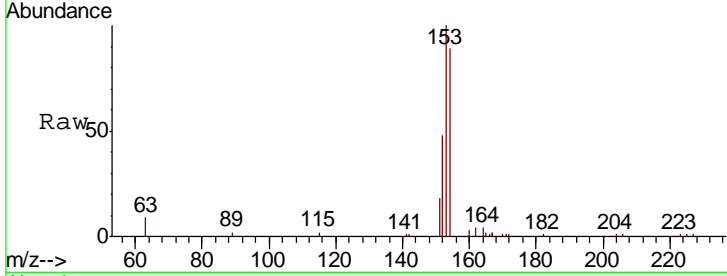




#17
 Acenaphthene
 Concen: 0.392 ng
 RT: 14.43 min Scan# 917
 Delta R.T. -0.00 min
 Lab File: BE101019.D
 Acq: 10 Jan 2020 10:27

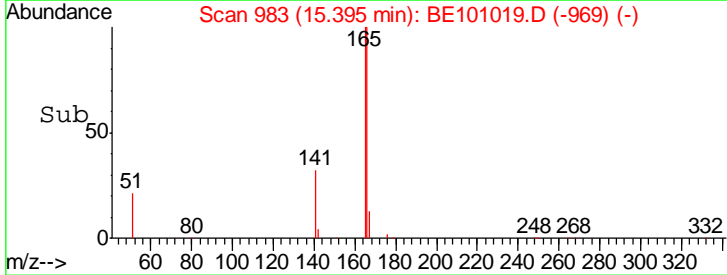
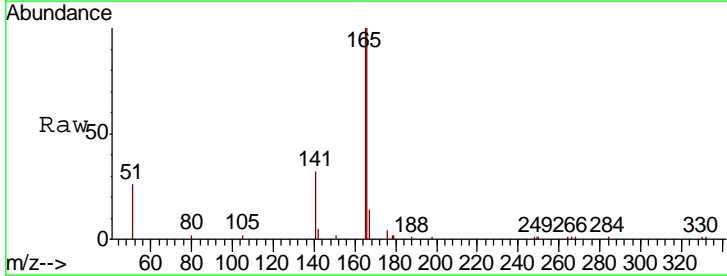
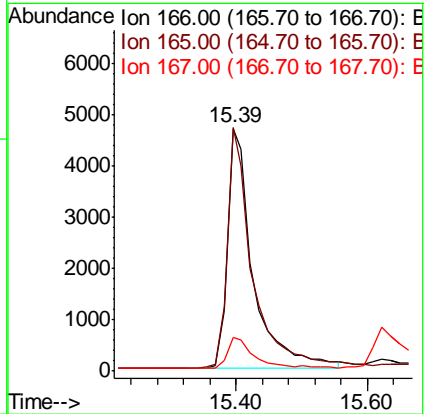
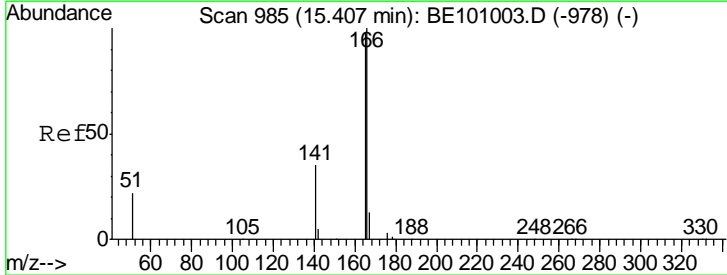
Instrument :
 BNA_E
ClientSampled :
 SSTDCCC0.4

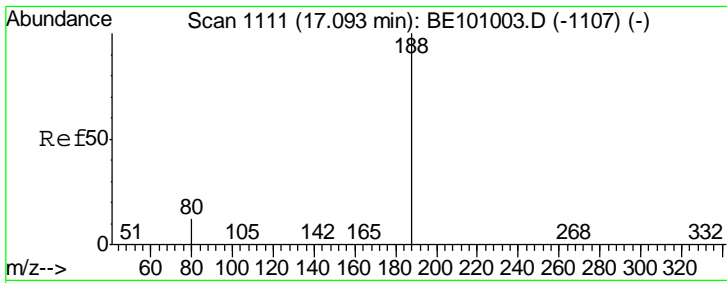
Tgt Ion	Resp	Lower	Upper
154	10263		
153	115.9	93.6	140.4
152	56.9	46.3	69.5



#18
 Fluorene
 Concen: 0.390 ng
 RT: 15.39 min Scan# 983
 Delta R.T. -0.01 min
 Lab File: BE101019.D
 Acq: 10 Jan 2020 10:27

Tgt Ion	Resp	Lower	Upper
166	12909		
165	98.1	79.8	119.8
167	13.4	11.0	16.6

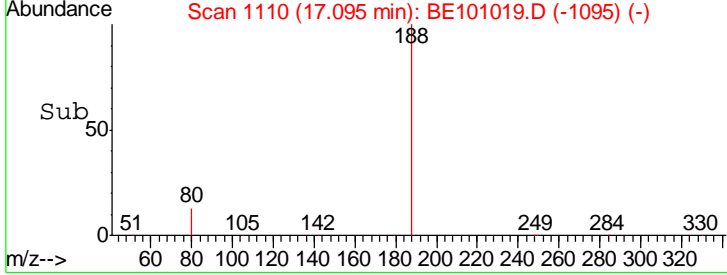
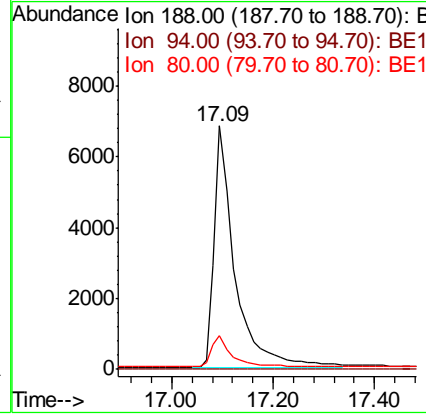
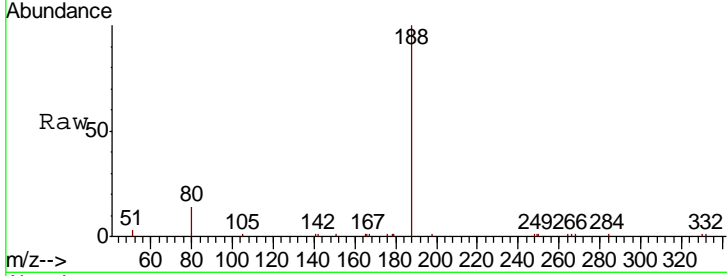




#19
 Phenanthrene-d10
 Concen: 0.400 ng
 RT: 17.09 min Scan# 1110
 Delta R.T. 0.00 min
 Lab File: BE101019.D
 Acq: 10 Jan 2020 10:27

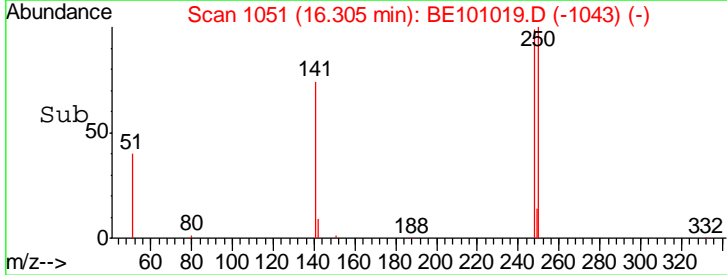
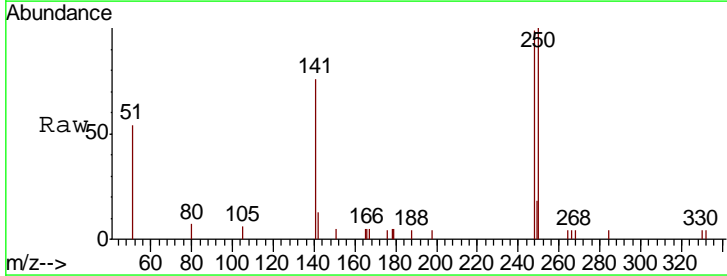
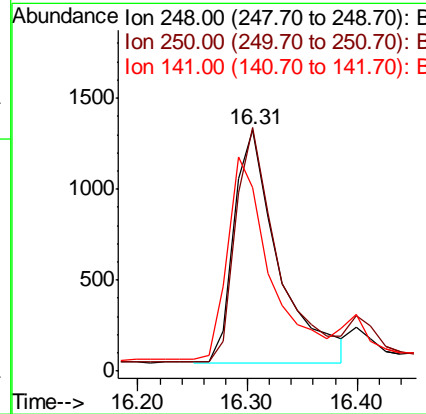
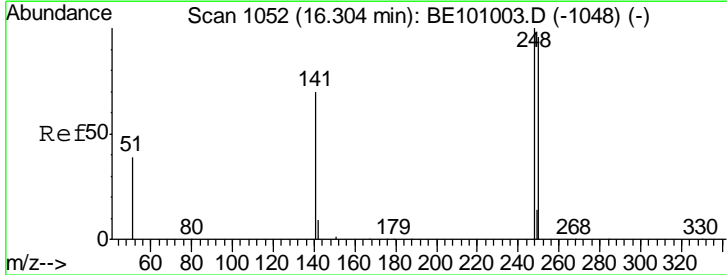
Instrument : BNA_E
 ClientSampleId : SSTDCCC0.4

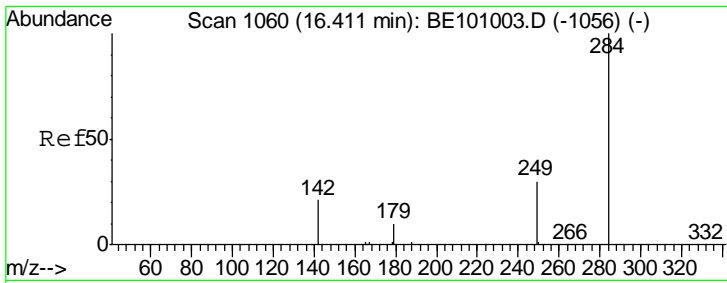
Tgt Ion	Resp	Lower	Upper
188	19397		
94	0.0	0.0	0.0
80	13.9	10.8	16.2



#20
 4-Bromophenyl-phenylether
 Concen: 0.379 ng m
 RT: 16.31 min Scan# 1051
 Delta R.T. 0.00 min
 Lab File: BE101019.D
 Acq: 10 Jan 2020 10:27

Tgt Ion	Resp	Lower	Upper
248	3588		
250	100.8	76.6	115.0
141	76.1	57.7	86.5

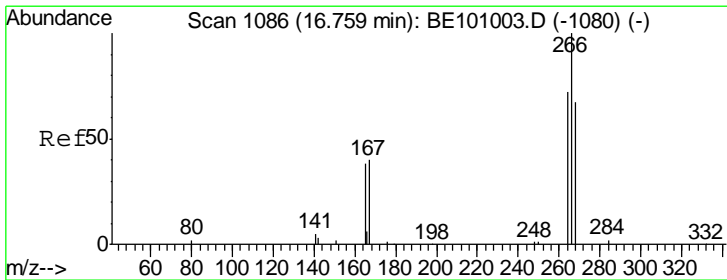
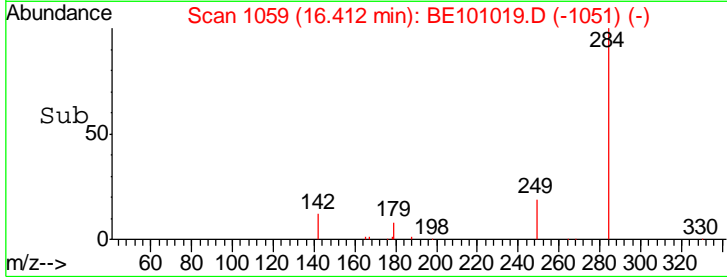
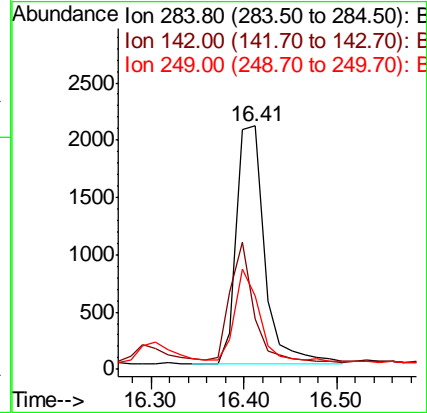
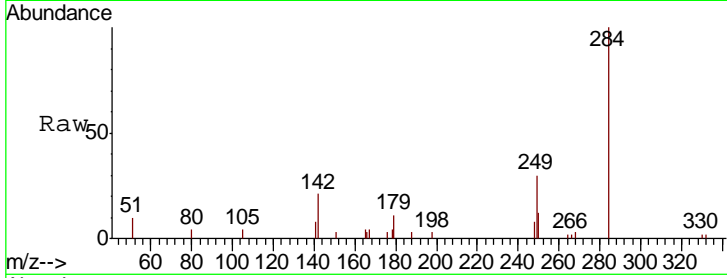




#21
Hexachlorobenzene
Concen: 0.417 ng
RT: 16.41 min Scan# 1059
Delta R.T. 0.00 min
Lab File: BE101019.D
Acq: 10 Jan 2020 10:27

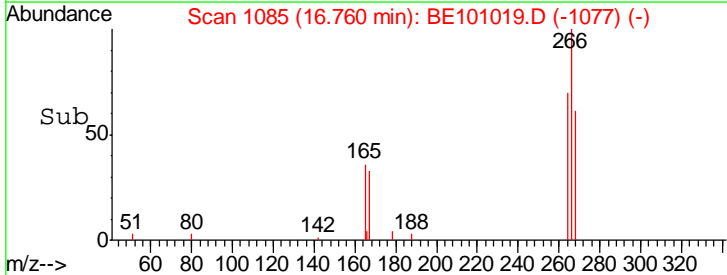
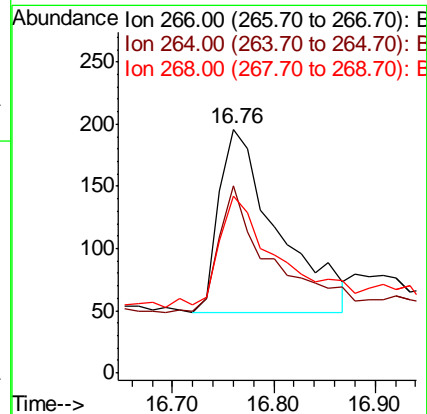
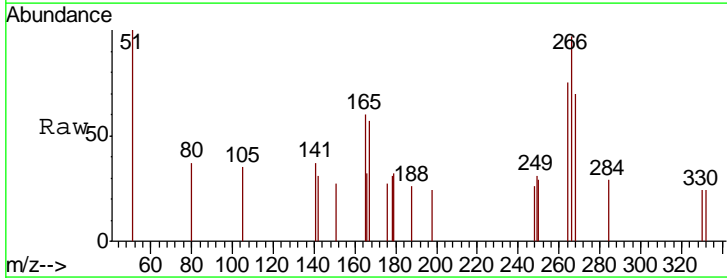
Instrument :
BNA_E
ClientSampled :
SSTDCCC0.4

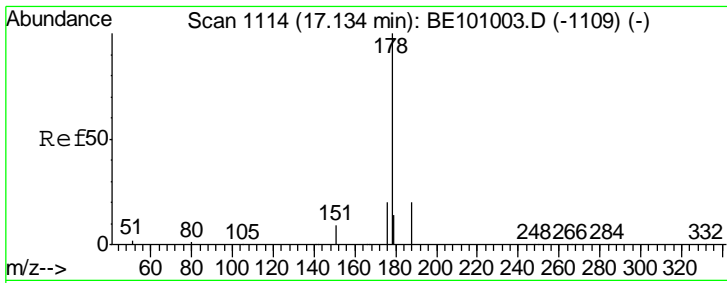
Tgt Ion	Resp	Lower	Upper
284	4330		
142	42.5	34.0	51.0
249	33.3	28.2	42.4



#22
Pentachlorophenol
Concen: 0.412 ng
RT: 16.76 min Scan# 1085
Delta R.T. 0.00 min
Lab File: BE101019.D
Acq: 10 Jan 2020 10:27

Tgt Ion	Resp	Lower	Upper
266	589		
264	77.0	61.0	91.4
268	72.4	58.5	87.7

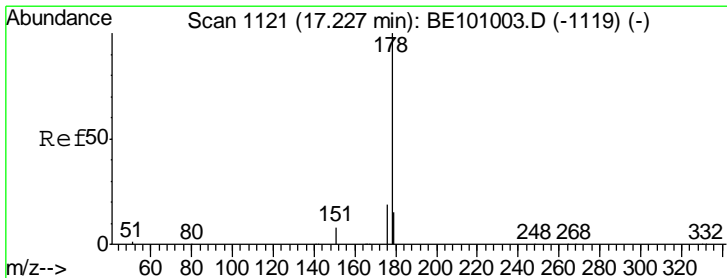
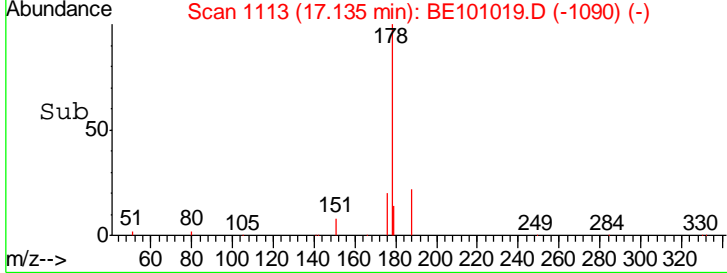
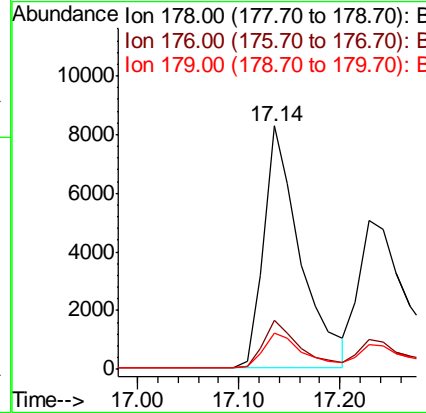
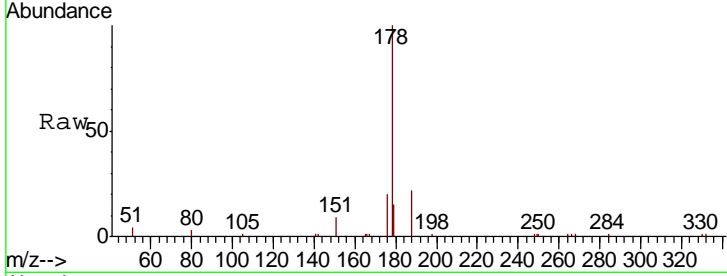




#23
 Phenanthrene
 Concen: 0.391 ng
 RT: 17.14 min Scan# 1113
 Delta R.T. 0.00 min
 Lab File: BE101019.D
 Acq: 10 Jan 2020 10:27

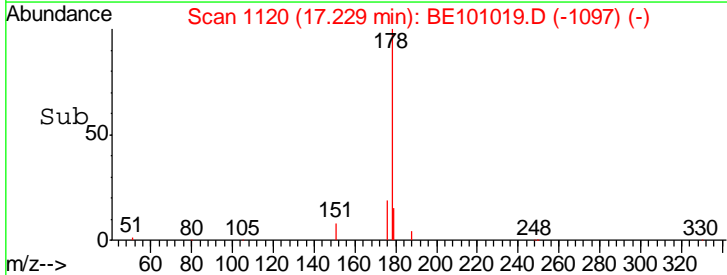
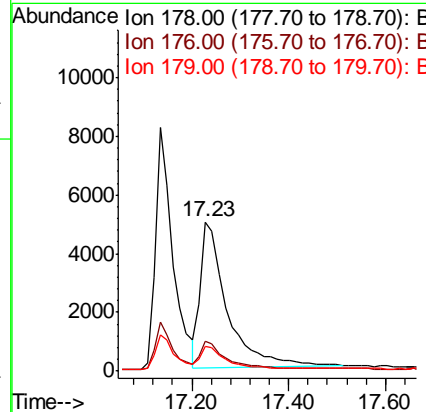
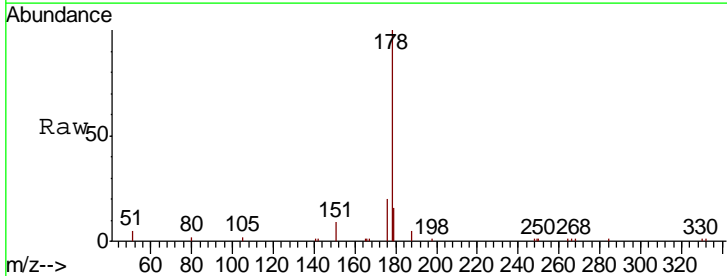
Instrument :
 BNA_E
 ClientSampleId :
 SSTDCCC0.4

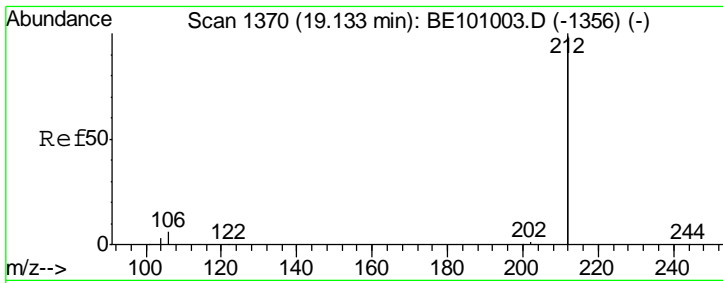
Tgt Ion	Resp	Lower	Upper
178	20690		
176	19.3	15.7	23.5
179	15.1	12.0	18.0



#24
 Anthracene
 Concen: 0.372 ng
 RT: 17.23 min Scan# 1120
 Delta R.T. 0.00 min
 Lab File: BE101019.D
 Acq: 10 Jan 2020 10:27

Tgt Ion	Resp	Lower	Upper
178	18572		
176	19.0	14.8	22.2
179	14.7	12.4	18.6

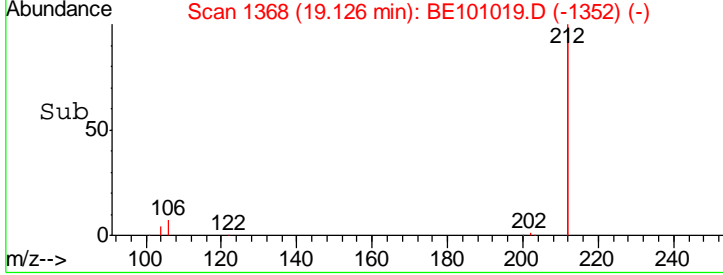
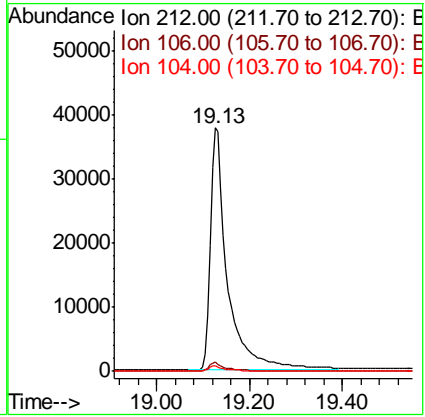
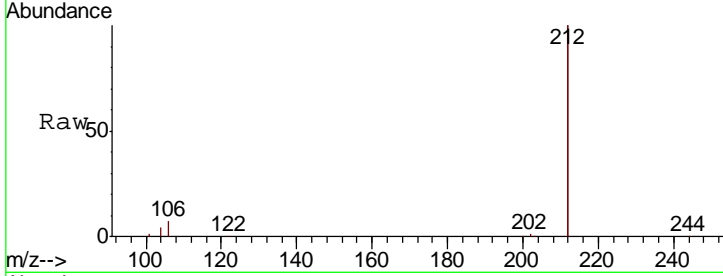




#25
 Fluoranthene-d10
 Concen: 0.369 ng
 RT: 19.13 min Scan# 1368
 Delta R.T. -0.01 min
 Lab File: BE101019.D
 Acq: 10 Jan 2020 10:27

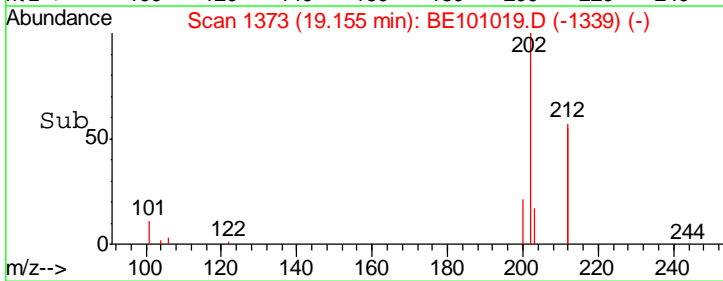
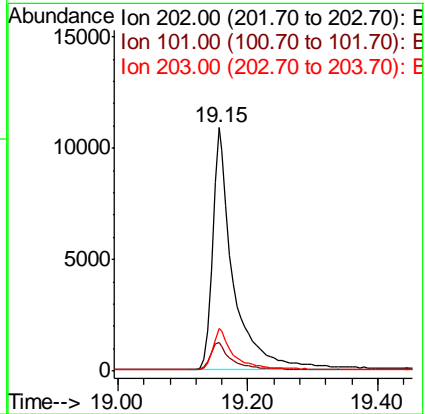
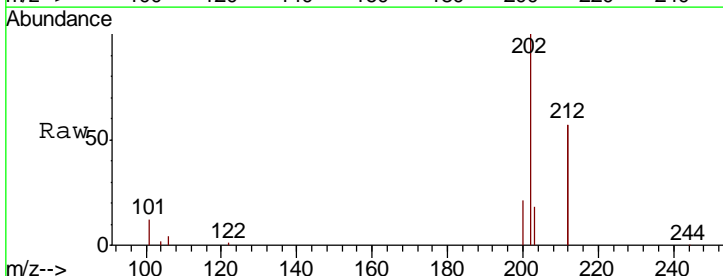
Instrument :
 BNA_E
ClientSampleId :
 SSTDCCC0.4

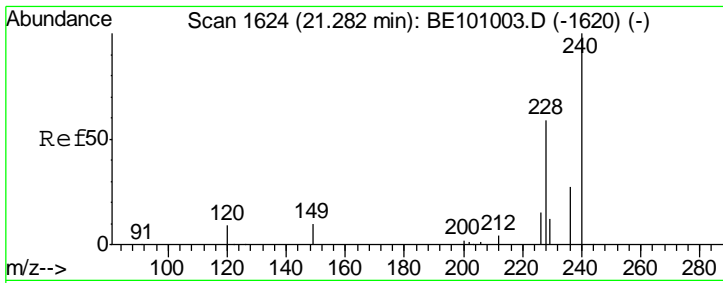
Tgt Ion	Resp	Lower	Upper
212	99413		
106	3.4	2.6	3.8
104	1.8	1.4	2.0



#26
 Fluoranthene
 Concen: 0.368 ng
 RT: 19.15 min Scan# 1373
 Delta R.T. -0.01 min
 Lab File: BE101019.D
 Acq: 10 Jan 2020 10:27

Tgt Ion	Resp	Lower	Upper
202	24408		
101	11.9	9.6	14.4
203	16.6	13.8	20.6

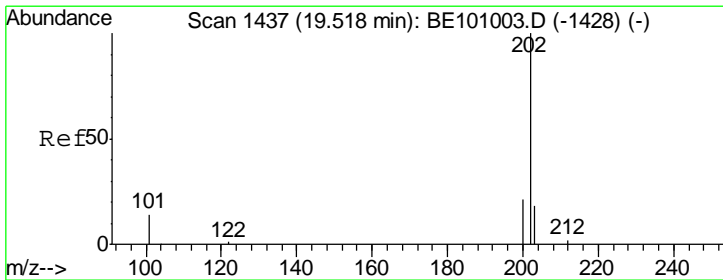
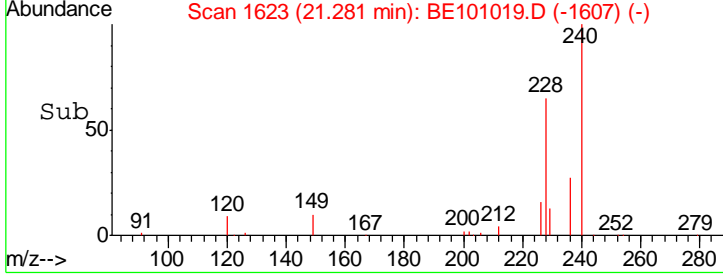
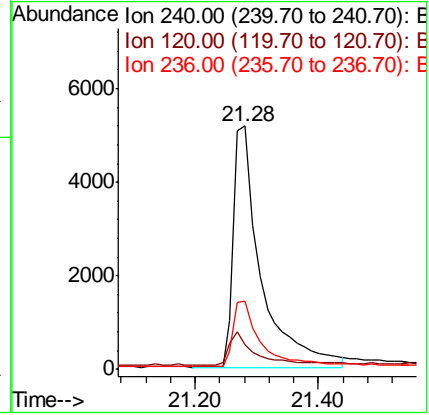
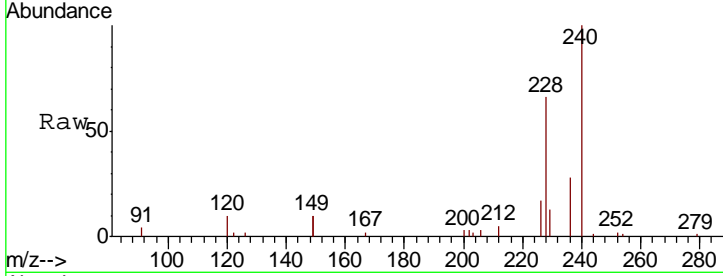




#27
 Chrysene-d12
 Concen: 0.400 ng
 RT: 21.28 min Scan# 1623
 Delta R.T. -0.00 min
 Lab File: BE101019.D
 Acq: 10 Jan 2020 10:27

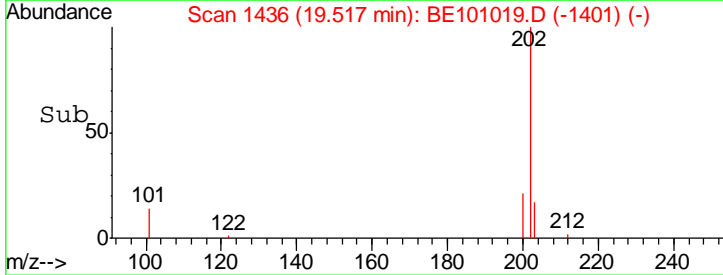
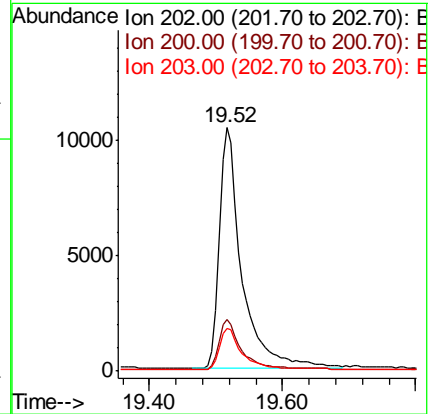
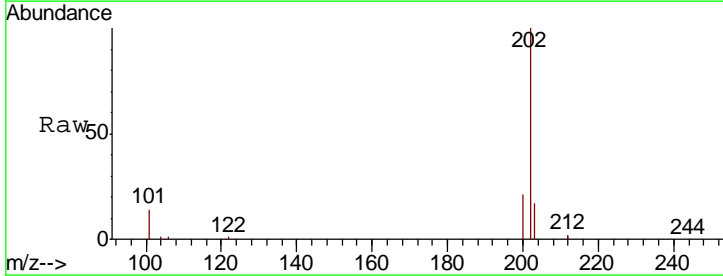
Instrument : BNA_E
 ClientSampled : SSTDCCC0.4

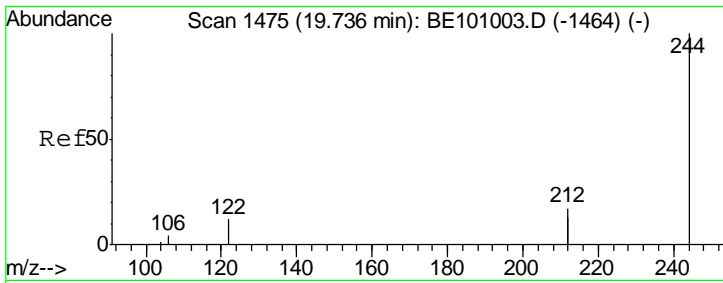
Tgt Ion	Resp	Lower	Upper
240	15956		
120	10.2	8.6	13.0
236	28.1	22.2	33.4



#28
 Pyrene
 Concen: 0.412 ng
 RT: 19.52 min Scan# 1436
 Delta R.T. -0.00 min
 Lab File: BE101019.D
 Acq: 10 Jan 2020 10:27

Tgt Ion	Resp	Lower	Upper
202	24499		
200	20.9	17.0	25.4
203	17.1	13.8	20.6

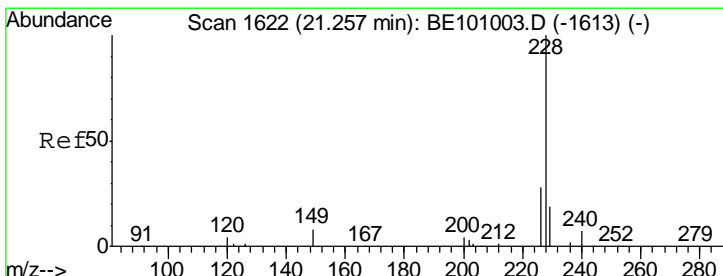
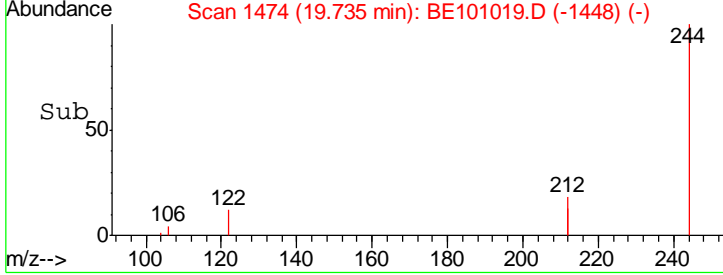
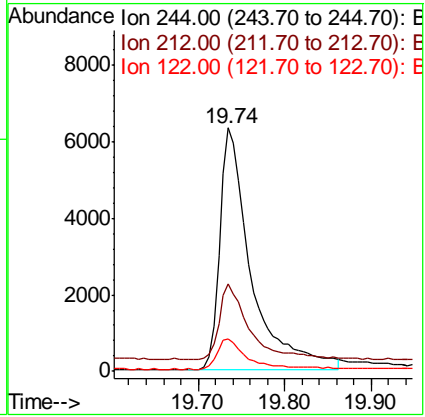
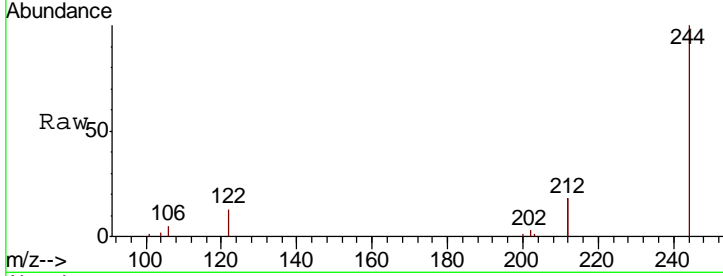




#29
 Terphenyl-d14
 Concen: 0.405 ng
 RT: 19.74 min Scan# 1474
 Delta R.T. -0.00 min
 Lab File: BE101019.D
 Acq: 10 Jan 2020 10:27

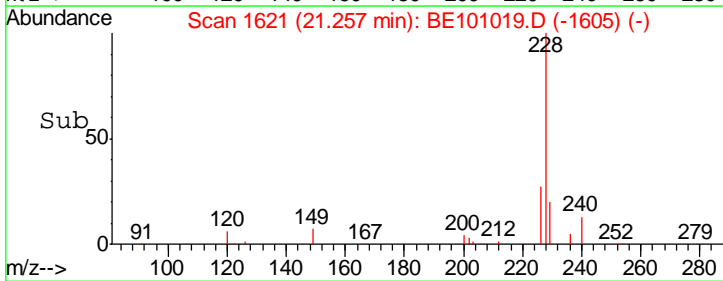
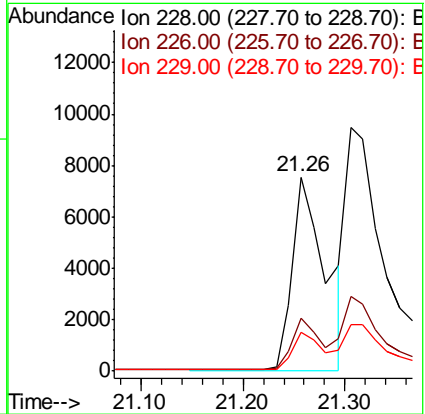
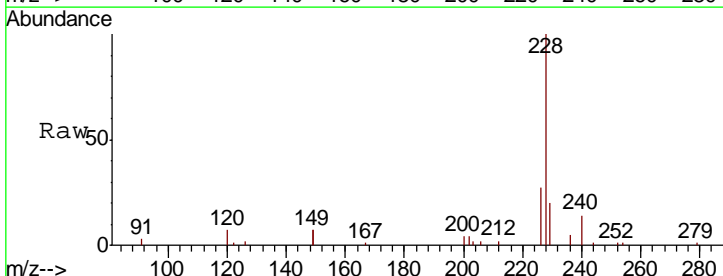
Instrument : BNA_E
 ClientSampled : SSTDCCC0.4

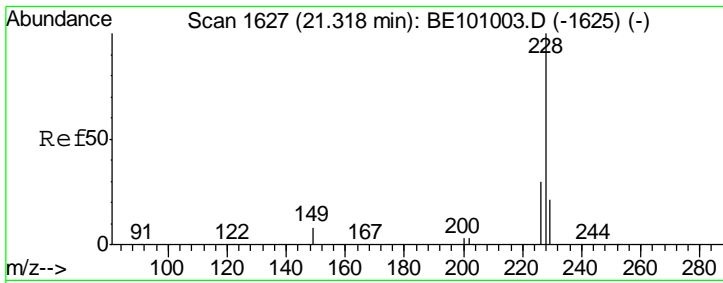
Tgt Ion	Resp	Lower	Upper
244	15868		
212	36.1	27.2	40.8
122	13.3	9.8	14.8



#30
 Benzo(a)anthracene
 Concen: 0.378 ng m
 RT: 21.26 min Scan# 1621
 Delta R.T. -0.00 min
 Lab File: BE101019.D
 Acq: 10 Jan 2020 10:27

Tgt Ion	Resp	Lower	Upper
228	17228		
226	27.1	22.7	34.1
229	20.2	15.5	23.3

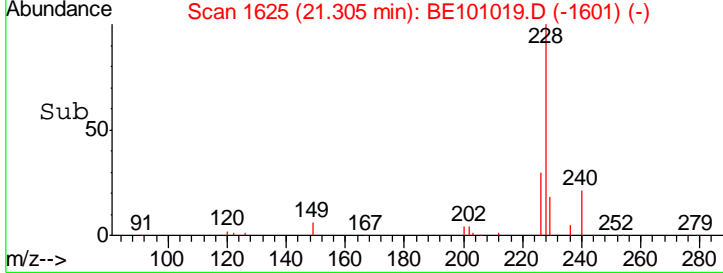
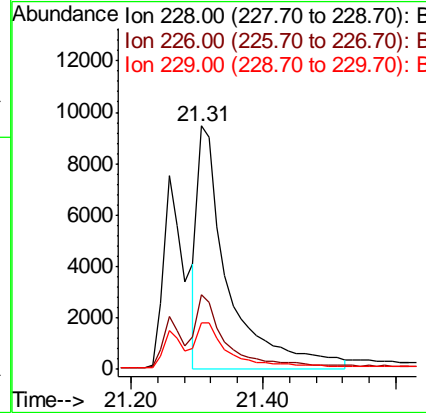
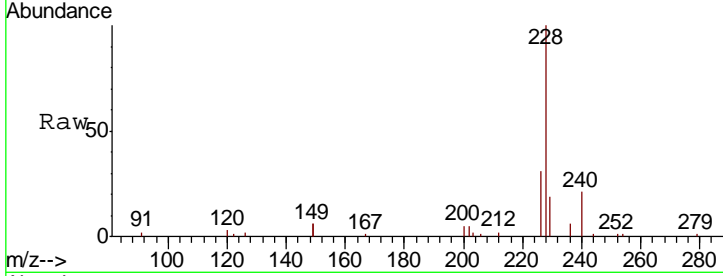




#31
 Chrysene
 Concen: 0.452 ng m
 RT: 21.31 min Scan# 1625
 Delta R.T. -0.01 min
 Lab File: BE101019.D
 Acq: 10 Jan 2020 10:27

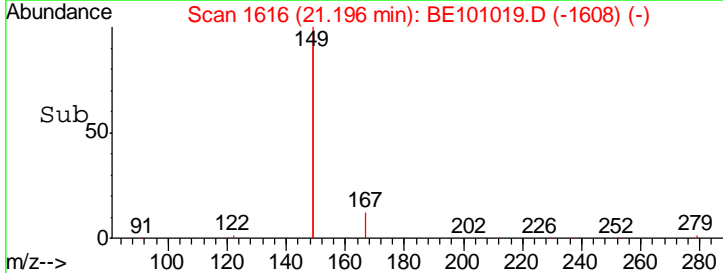
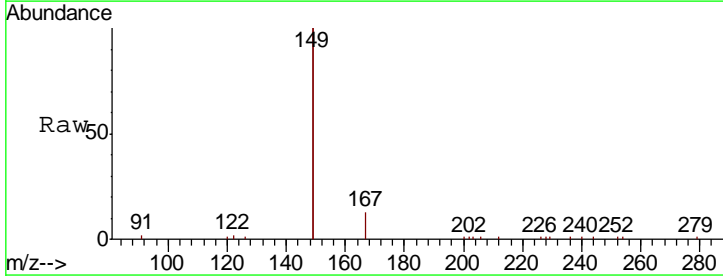
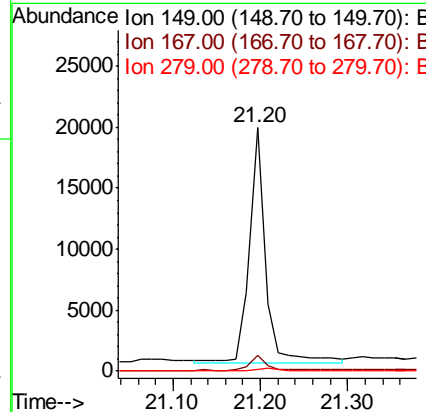
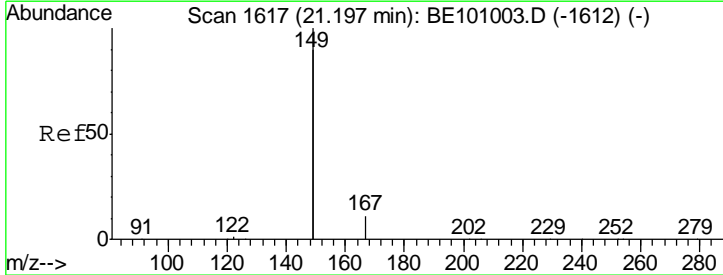
Instrument :
 BNA_E
 ClientSampled :
 SSTDCCC0.4

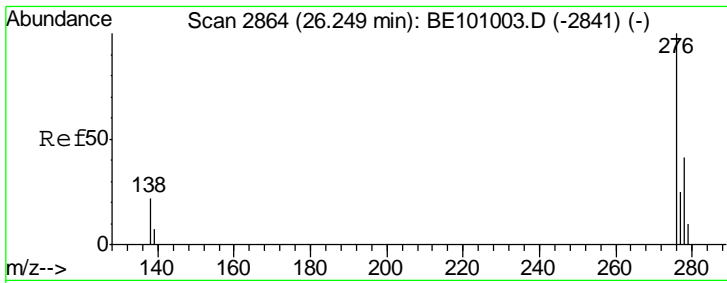
Tgt Ion	Resp	Lower	Upper
228	30618		
226	30.5	23.5	35.3
229	18.9	16.7	25.1



#32
 Bis(2-ethylhexyl)phthalate
 Concen: 0.323 ng m
 RT: 21.20 min Scan# 1616
 Delta R.T. -0.00 min
 Lab File: BE101019.D
 Acq: 10 Jan 2020 10:27

Tgt Ion	Resp	Lower	Upper
149	24500		
167	5.8	5.2	7.8
279	0.8	0.8	1.2

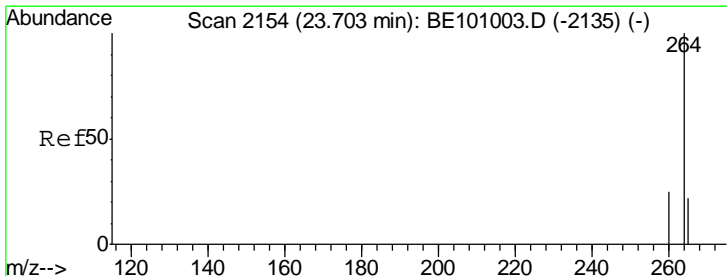
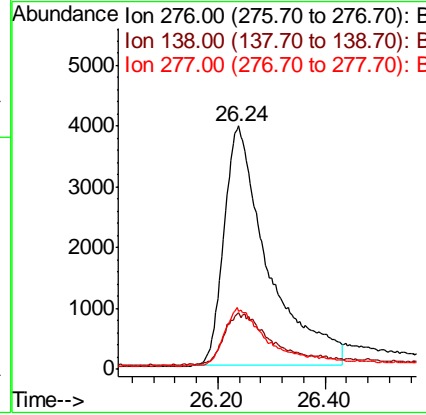
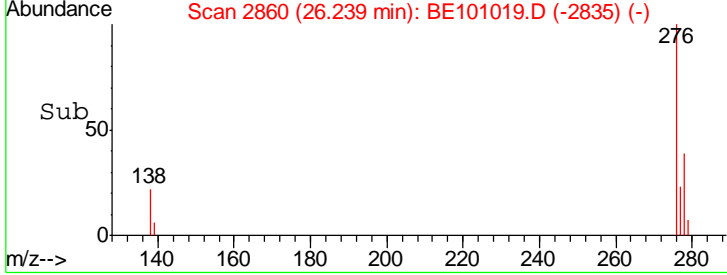
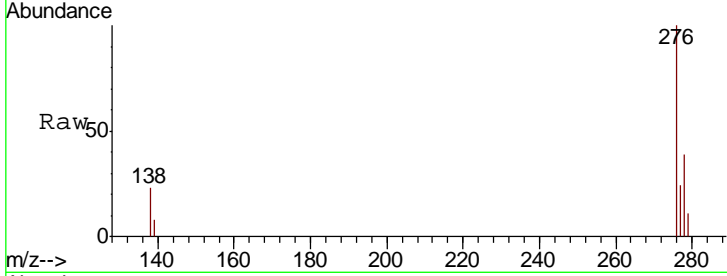




#33
 Indeno(1,2,3-cd)pyrene
 Concen: 0.422 ng
 RT: 26.24 min Scan# 2860
 Delta R.T. -0.01 min
 Lab File: BE101019.D
 Acq: 10 Jan 2020 10:27

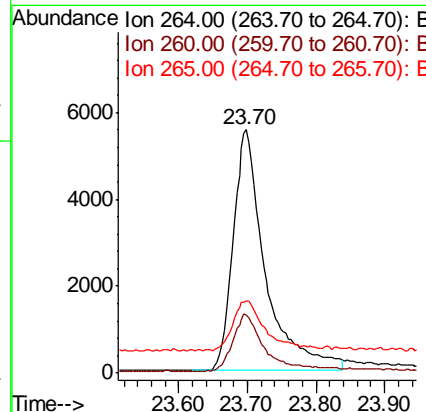
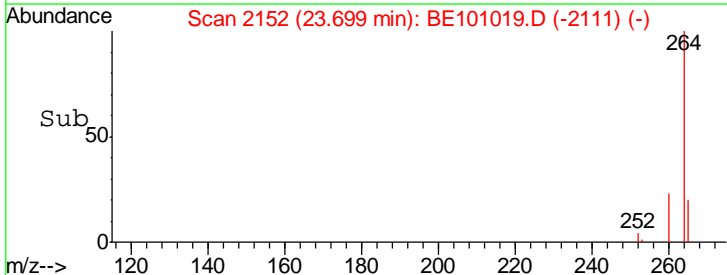
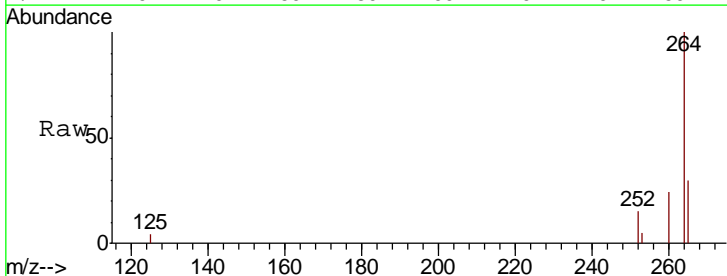
Instrument :
 BNA_E
 ClientSampleId :
 SSTDCCC0.4

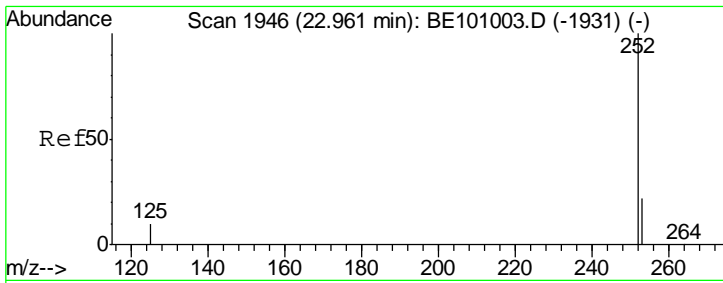
Tgt Ion	Resp	Lower	Upper
276	22555		
138	22.3	16.1	24.1
277	22.3	18.1	27.1



#34
 Perylene-d12
 Concen: 0.400 ng
 RT: 23.70 min Scan# 2152
 Delta R.T. -0.00 min
 Lab File: BE101019.D
 Acq: 10 Jan 2020 10:27

Tgt Ion	Resp	Lower	Upper
264	18149		
260	23.6	20.3	30.5
265	29.5	27.0	40.4

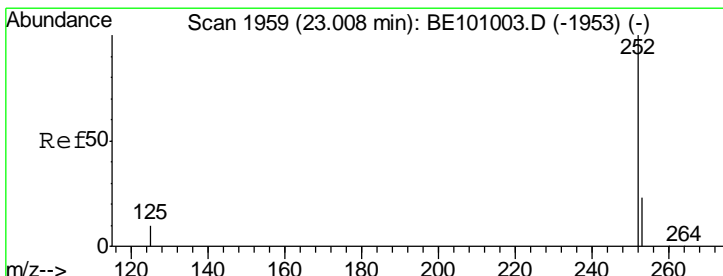
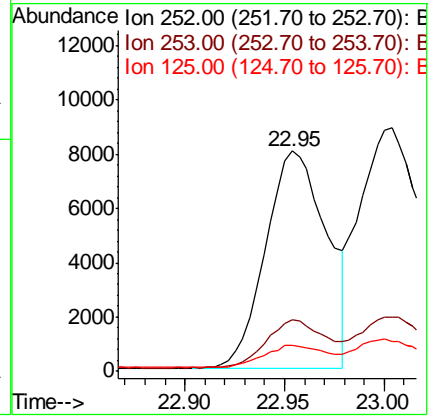
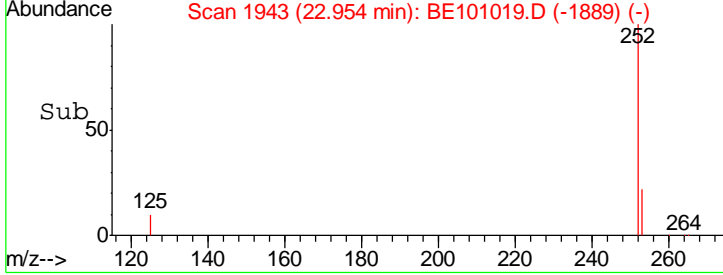
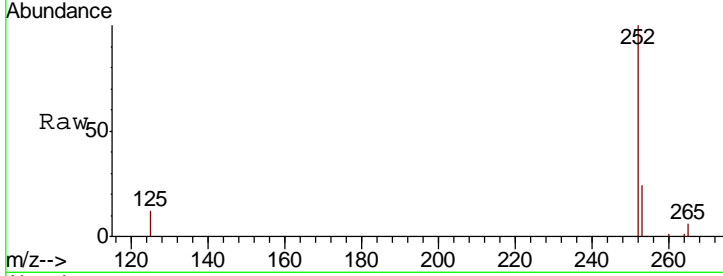




#35
 Benzo(b)fluoranthene
 Concen: 0.335 ng
 RT: 22.95 min Scan# 1943
 Delta R.T. -0.01 min
 Lab File: BE101019.D
 Acq: 10 Jan 2020 10:27

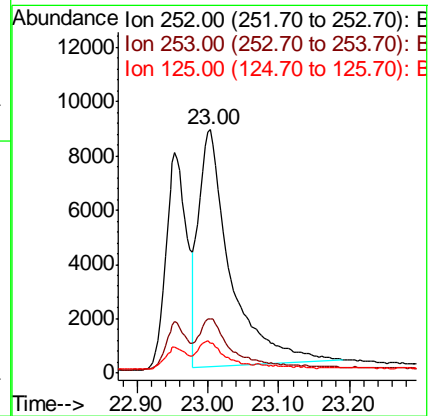
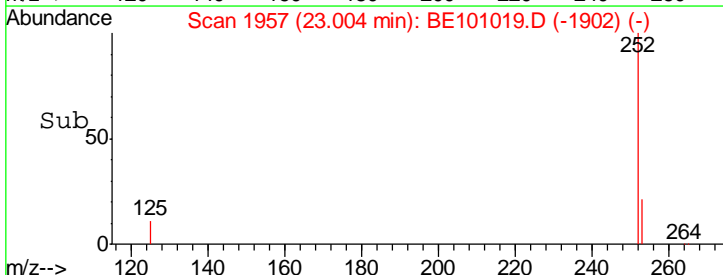
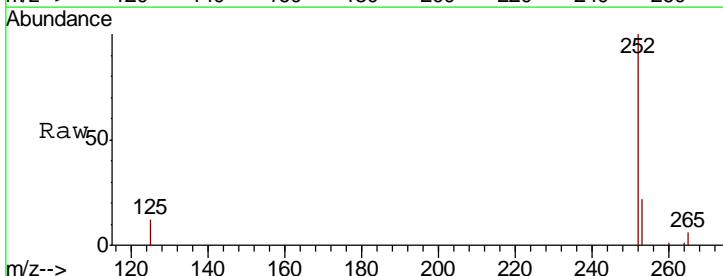
Instrument : BNA_E
 ClientSampleId : SSTDCCC0.4

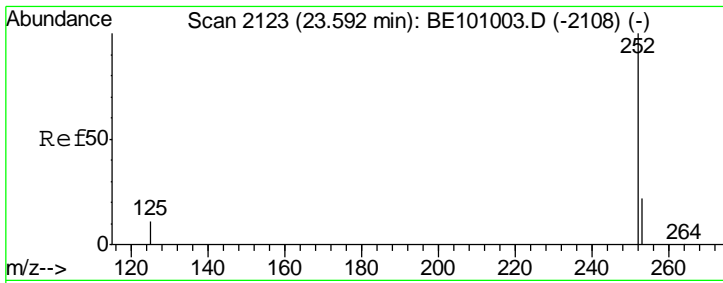
Tgt Ion	Resp	Lower	Upper
252	17045		
253	23.7	18.5	27.7
125	11.8	9.5	14.3



#36
 Benzo(k)fluoranthene
 Concen: 0.366 ng
 RT: 23.00 min Scan# 1957
 Delta R.T. -0.00 min
 Lab File: BE101019.D
 Acq: 10 Jan 2020 10:27

Tgt Ion	Resp	Lower	Upper
252	26970		
253	22.2	18.9	28.3
125	12.5	10.1	15.1

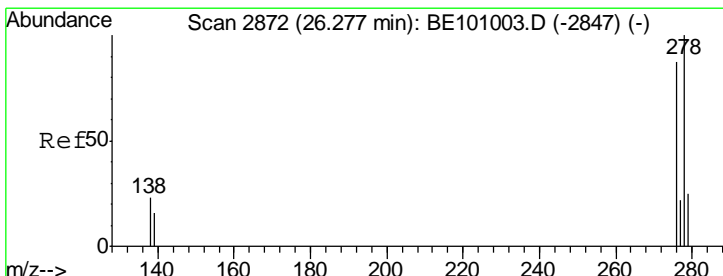
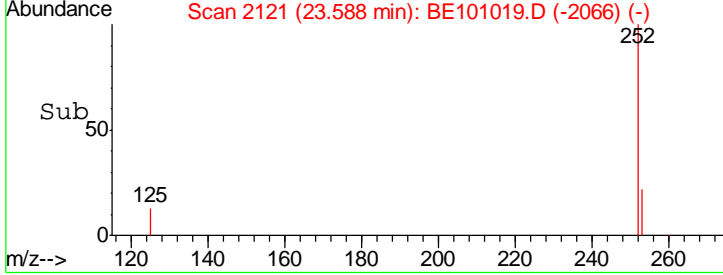
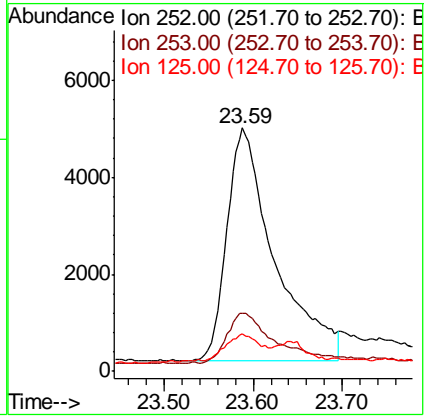
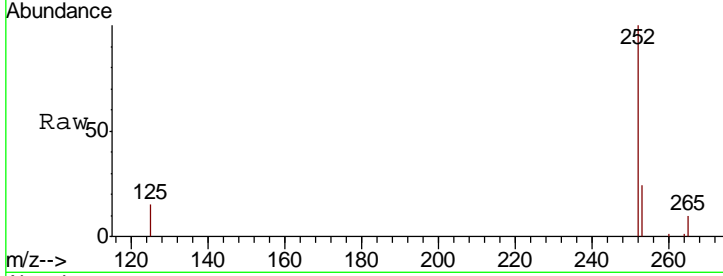




#37
 Benzo(a)pyrene
 Concen: 0.364 ng
 RT: 23.59 min Scan# 2121
 Delta R.T. -0.00 min
 Lab File: BE101019.D
 Acq: 10 Jan 2020 10:27

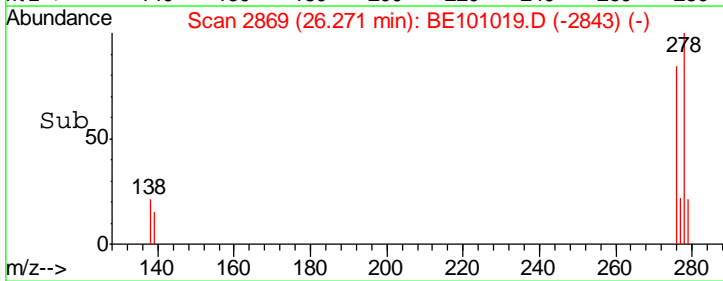
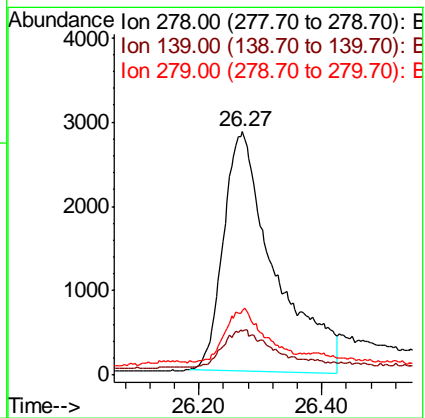
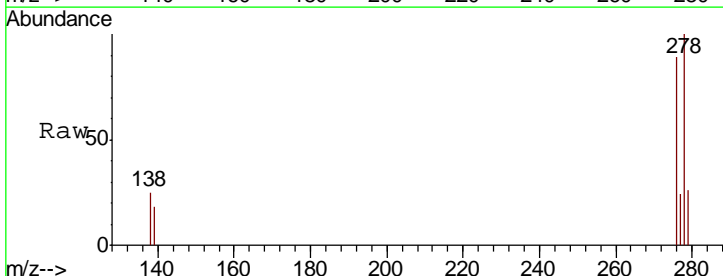
Instrument :
 BNA_E
 ClientSampleId :
 SSTDCCC0.4

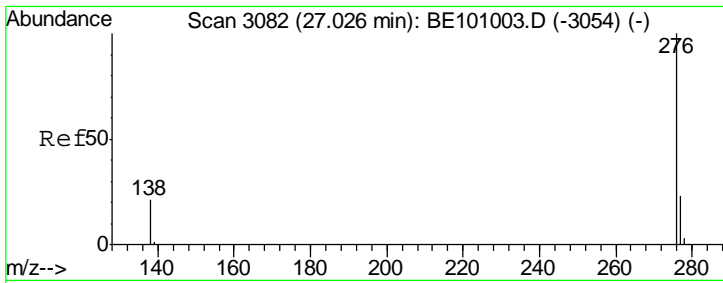
Tgt Ion	Resp	Lower	Upper
252	17938		
253	23.9	19.4	29.2
125	15.2	11.8	17.6



#38
 Dibenzo(a,h)anthracene
 Concen: 0.362 ng m
 RT: 26.27 min Scan# 2869
 Delta R.T. -0.01 min
 Lab File: BE101019.D
 Acq: 10 Jan 2020 10:27

Tgt Ion	Resp	Lower	Upper
278	16401		
139	18.1	15.0	22.4
279	26.4	22.6	33.8





#39
 Benzo(a,h,i)perylene
 Concen: 0.366 ng
 RT: 27.01 min Scan# 3077
 Delta R.T. -0.01 min
 Lab File: BE101019.D
 Acq: 10 Jan 2020 10:27

Instrument :
 BNA_E
 ClientSampleId :
 SSTDCCC0.4

Tot Ion: 276 Resp: 20404

Ion	Ratio	Lower	Upper
276	100		
277	24.0	19.4	29.2
138	22.4	17.9	26.9

