

Data Path : Z:\SVOASRV\HPCHEM1\BNA E\DATA\BE011519\  
 Data File : BE098622.D  
 Acq On : 15 Jan 2019 11:32  
 Operator : SJ/JU  
 Sample : SSTDICCO.2  
 Misc :  
 ALS Vial : 3 Sample Multiplier: 1

Instrument :  
 BNA\_E  
 ClientSampled :  
 SSTDICCO.2

Manual Integrations  
 APPROVED

Sohil  
 1/16/2019 8:54:46 AM

Quant Time: Jan 15 13:11:38 2019  
 Quant Method : Z:\SVOASRV\HPCHEM1\BNA E\METHODS\8270-SIM-BE011519.M  
 Quant Title : ASP BNA STANDARDS FOR 5 POINT CALIBRATION  
 QLast Update : Tue Jan 15 12:58:38 2019  
 Response via : Initial Calibration

Internal Standards	R.T.	QIon	Response	Conc	Units	Dev(Min)
1) 1,4-Dichlorobenzene-d4	7.80	152	1126	0.40	ng	0.00
7) Naphthalene-d8	10.60	136	5140	0.40	ng	0.00
13) Acenaphthene-d10	14.47	164	3345	0.40	ng	0.00
19) Phenanthrene-d10	17.23	188	8145	0.40	ng	0.00
27) Chrysene-d12	21.41	240	9143	0.40	ng	0.00
34) Perylene-d12	23.93	264	9140	0.40	ng	0.00

## System Monitoring Compounds

4) 2-Fluorophenol	5.40	112	607	0.23	ng	0.00
5) Phenol-d6	7.00	99	903	0.24	ng	0.00
8) Nitrobenzene-d5	8.98	82	762	0.16	ng	0.01
11) 2-Methylnaphthalene-d10	12.21	152	1749	0.21	ng	0.00
14) 2,4,6-Tribromophenol	15.98	330	280	0.23	ng	0.01
15) 2-Fluorobiphenyl	13.09	172	3079	0.22	ng	0.00
25) Fluoranthene-d10	19.26	212	20509	0.20	ng	0.00
29) Terphenyl-d14	19.86	244	4245	0.19	ng	0.00

## Target Compounds

Target Compounds	R.T.	QIon	Response	Conc	Units	Qvalue
2) 1,4-Dioxane	3.31	88	548	0.281	ng	# 79
3) n-Nitrosodimethylamine	3.66	42	229	0.131	ng	# 97
6) bis(2-Chloroethyl)ether	7.24	93	591	0.167	ng	89
9) Naphthalene	10.65	128	10787	0.209	ng	99
10) Hexachlorobutadiene	10.94	225	791	0.240	ng	98
12) 2-Methylnaphthalene	12.28	142	1738	0.207	ng	97
16) Acenaphthylene	14.20	152	3005	0.192	ng	99
17) Acenaphthene	14.54	154	1866	0.198	ng	98
18) Fluorene	15.51	166	2440	0.194	ng	99
20) 4-Bromophenyl-phenylether	16.41	248	815	0.186	ng	# 81
21) Hexachlorobenzene	16.53	284	1085	0.230	ng	97
22) Pentachlorophenol	16.89	266	257	0.276	ng	95
23) Phenanthrene	17.27	178	3890	0.197	ng	100
24) Anthracene	17.36	178	3149	0.178	ng	99
26) Fluoranthene	19.29	202	5003	0.191	ng	99
28) Pyrene	19.65	202	5287	0.184	ng	99
30) Benzo(a)anthracene	21.39	228	5050	0.194	ng	96
31) Chrysene	21.45	228	5389	0.198	ng	99
32) Bis(2-ethylhexyl)phthalate	21.32	149	10578	0.200	ng	100
33) Indeno(1,2,3-cd)pyrene	26.57	276	5466	0.201	ng	97
35) Benzo(b)fluoranthene	23.15	252	5070m	0.203	ng	
36) Benzo(k)fluoranthene	23.21	252	5524	0.190	ng	# 93
37) Benzo(a)pyrene	23.81	252	4914	0.191	ng	# 96
38) Dibenzo(a,h)anthracene	26.60	278	4183	0.172	ng	# 92
39) Benzo(g,h,i)perylene	27.39	276	4842	0.198	ng	95

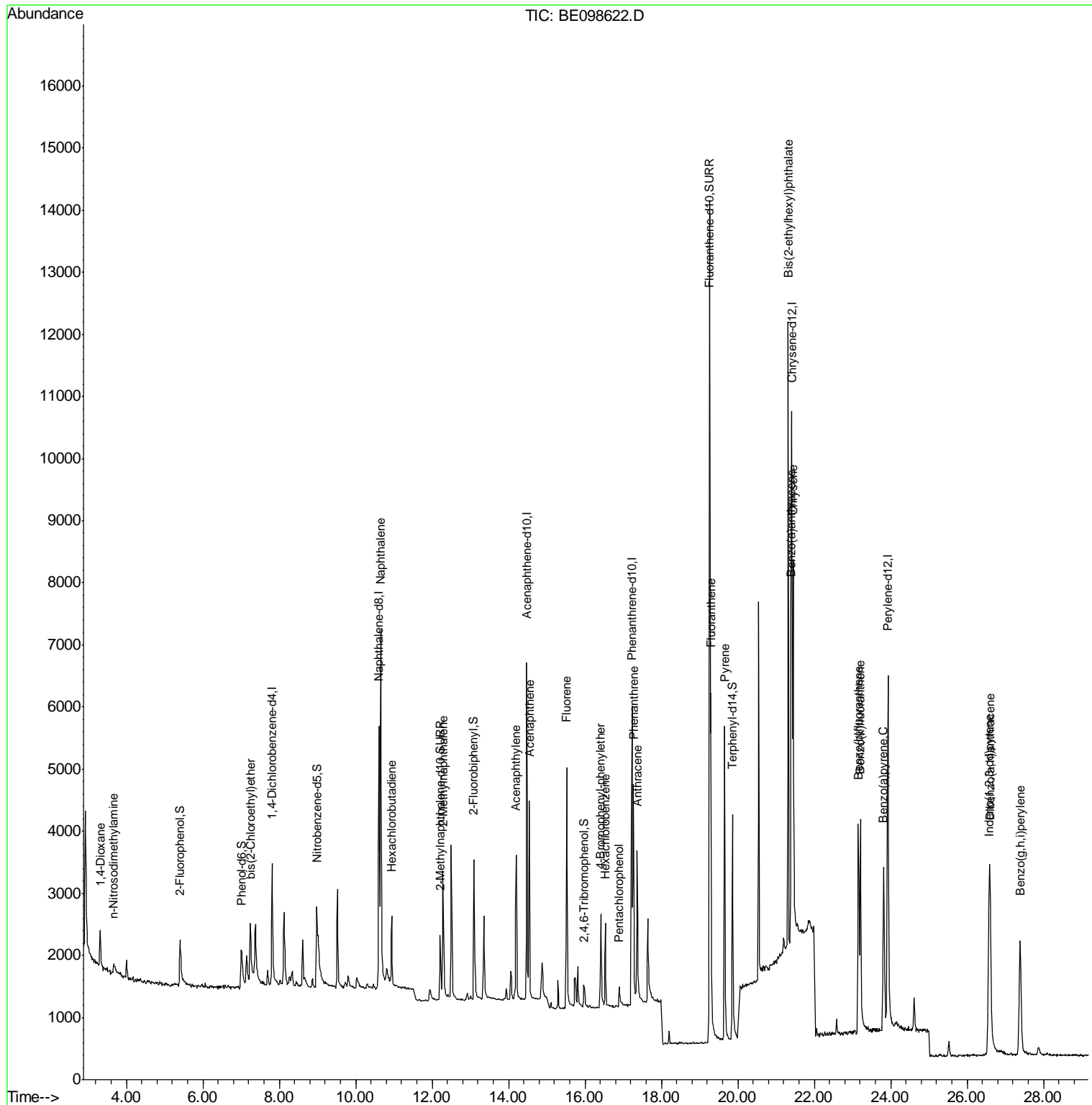
(#) = qualifier out of range (m) = manual integration (+) = signals summed

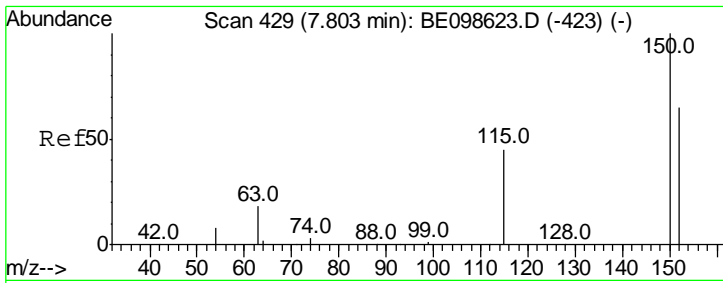
Data Path : Z:\SVOASRV\HPCHEM1\BNA E\DATA\BE011519\  
 Data File : BE098622.D  
 Acq On : 15 Jan 2019 11:32  
 Operator : SJ/JU  
 Sample : SSTDICC0.2  
 Misc :  
 ALS Vial : 3 Sample Multiplier: 1

Instrument :  
 BNA\_E  
 Client Sampled :  
 SSTDICC0.2

Manual Integrations  
 APPROVED  
 Sohil  
 1/16/2019 8:54:46 AM

Quant Time: Jan 15 13:11:38 2019  
 Quant Method : Z:\SVOASRV\HPCHEM1\BNA E\METHODS\8270-SIM-BE011519.M  
 Quant Title : ASP BNA STANDARDS FOR 5 POINT CALIBRATION  
 QLast Update : Tue Jan 15 12:58:38 2019  
 Response via : Initial Calibration



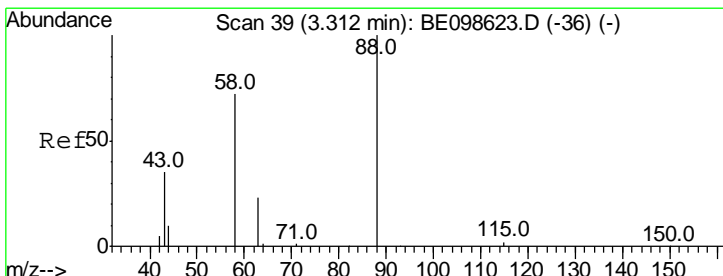
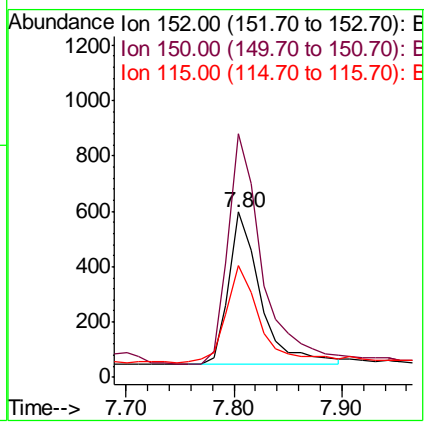
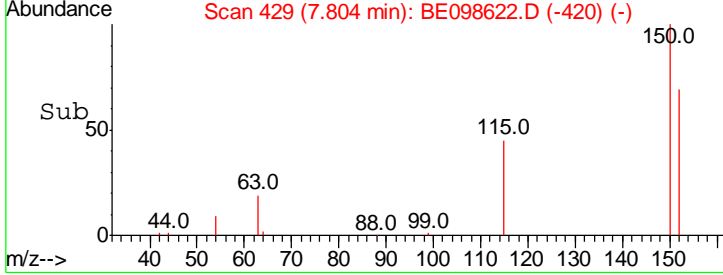
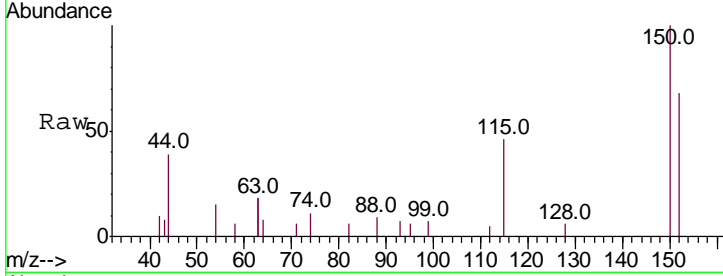


#1  
 1,4-Dichlorobenzene-d4  
 Concen: 0.400 ng  
 RT: 7.80 min Scan# 429  
 Delta R.T. 0.00 min  
 Lab File: BE098622.D  
 Acq: 15 Jan 2019 11:32

Instrument :  
 BNA\_E  
 ClientSampled :  
 SSTDICC0.2

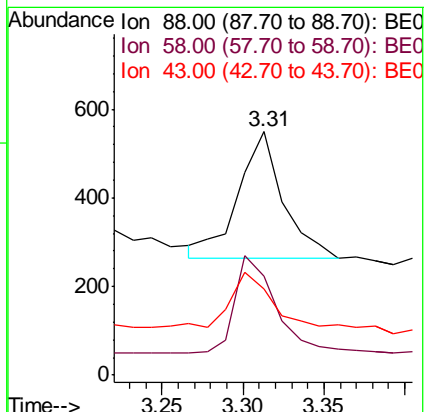
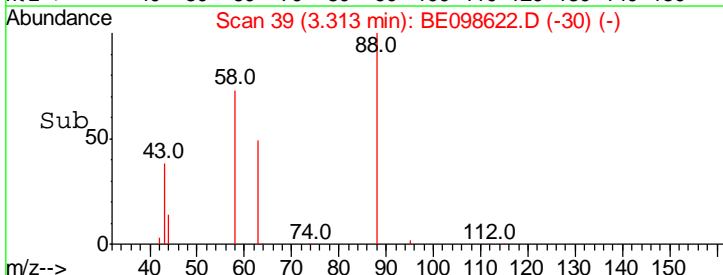
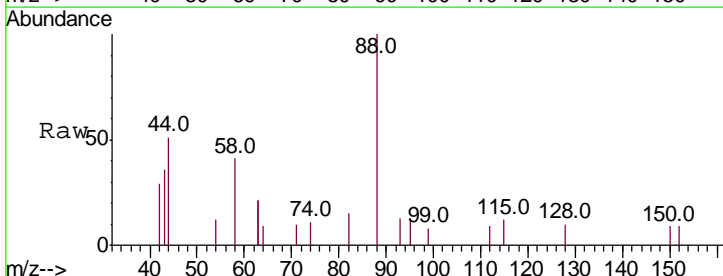
Tgt Ion	Resp	Lower	Upper
152	1126		
152	100		
150	147.2	121.4	182.2
115	67.8	59.1	88.7

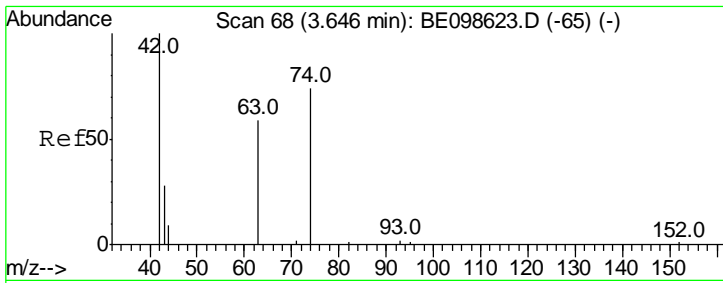
Manual Integrations  
**APPROVED**  
 Sohil  
 1/16/2019 8:54:46 AM



#2  
 1,4-Dioxane  
 Concen: 0.281 ng  
 RT: 3.31 min Scan# 39  
 Delta R.T. 0.00 min  
 Lab File: BE098622.D  
 Acq: 15 Jan 2019 11:32

Tgt Ion	Resp	Lower	Upper
88	548		
88	100		
58	70.4	73.9	110.9#
43	41.8	43.7	65.5#





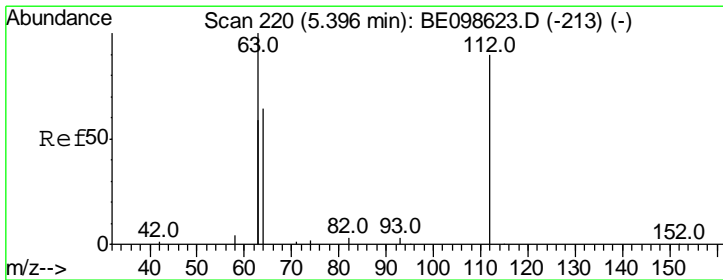
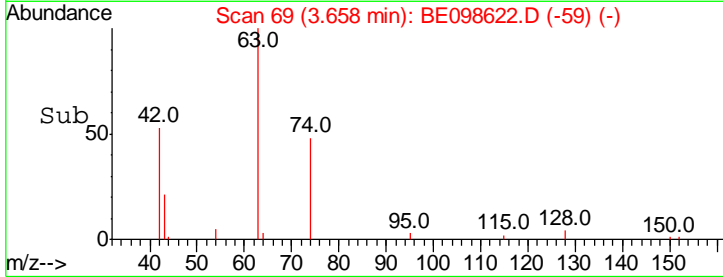
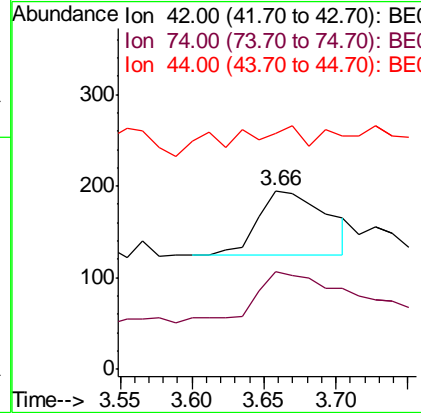
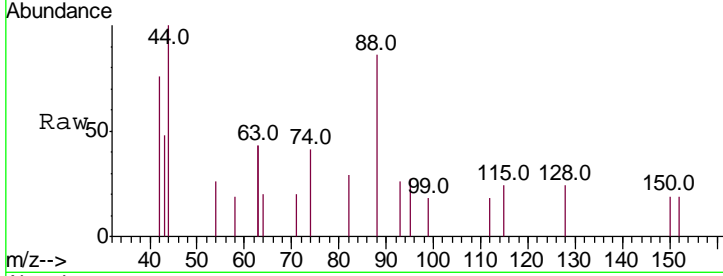
#3  
 n-Nitrosodimethylamine  
 Concen: 0.131 ng  
 RT: 3.66 min Scan# 69  
 Delta R.T. 0.01 min  
 Lab File: BE098622.D  
 Acq: 15 Jan 2019 11:32

**Instrument :**  
 BNA\_E  
**ClientSampled :**  
 SSTDICC0.2

Tgt Ion	Ratio	Lower	Upper
42	100		
74	76.0	58.9	88.3
44	24.9	0.0	0.0#

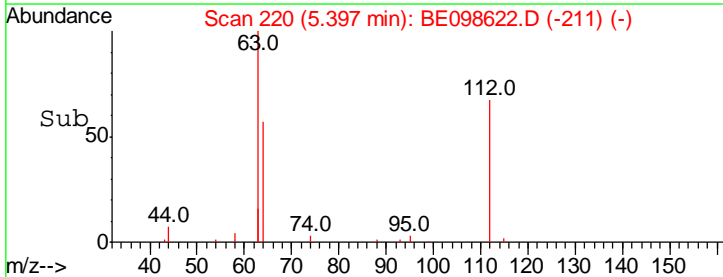
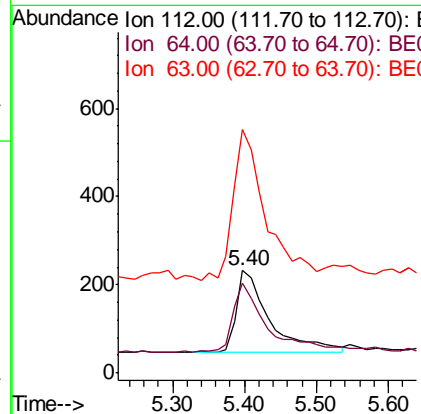
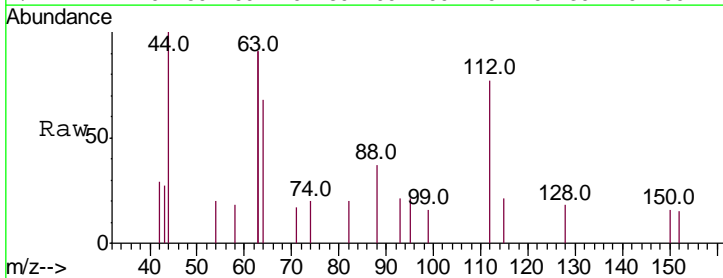
**Manual Integrations**  
**APPROVED**

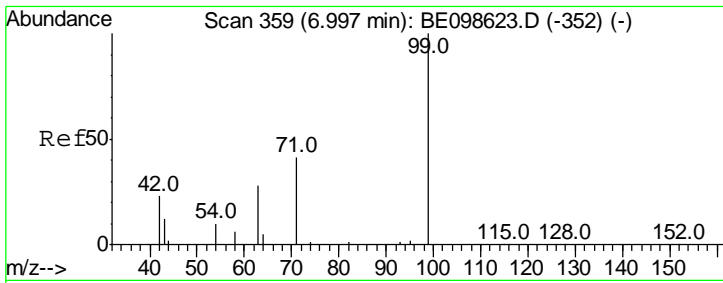
Sohil  
 1/16/2019 8:54:46 AM



#4  
 2-Fluorophenol  
 Concen: 0.230 ng  
 RT: 5.40 min Scan# 220  
 Delta R.T. 0.00 min  
 Lab File: BE098622.D  
 Acq: 15 Jan 2019 11:32

Tgt Ion	Ratio	Lower	Upper
112	100		
64	87.8	62.9	94.3
63	180.1	152.2	228.4





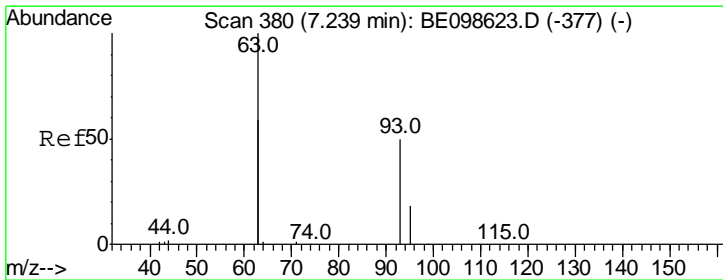
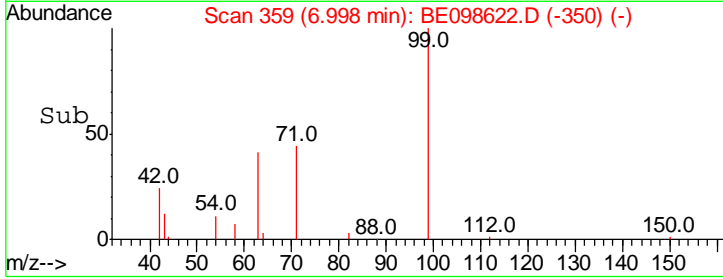
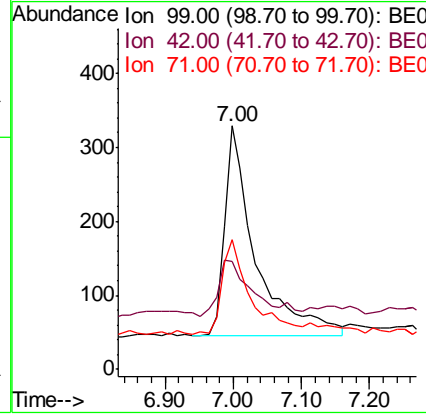
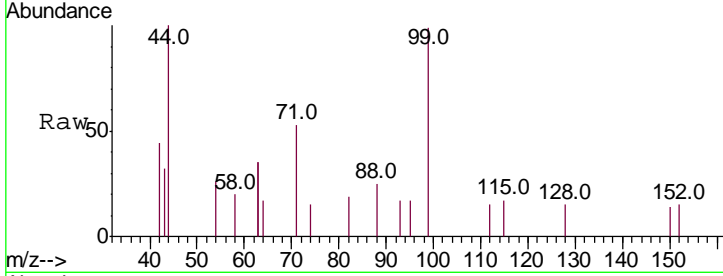
#5  
 Phenol-d6  
 Concen: 0.242 ng  
 RT: 7.00 min Scan# 359  
 Delta R.T. 0.00 min  
 Lab File: BE098622.D  
 Acq: 15 Jan 2019 11:32

**Instrument :**  
 BNA\_E  
**ClientSampled :**  
 SSTDICC0.2

Tgt Ion	Ratio	Lower	Upper
99	100		
42	30.8	24.6	37.0
71	42.2	35.1	52.7

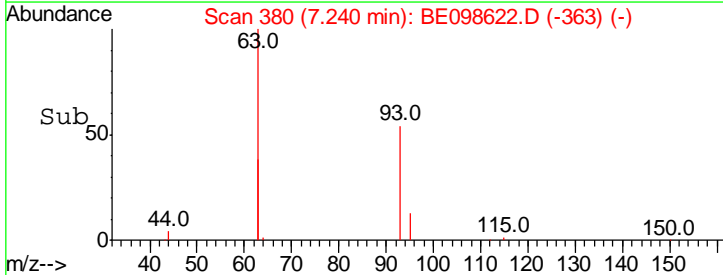
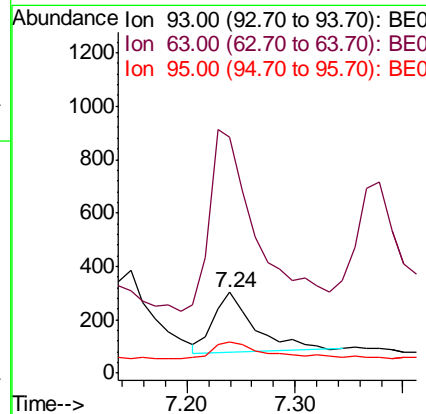
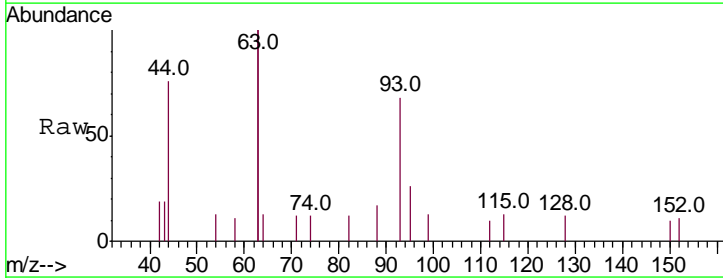
**Manual Integrations**  
**APPROVED**

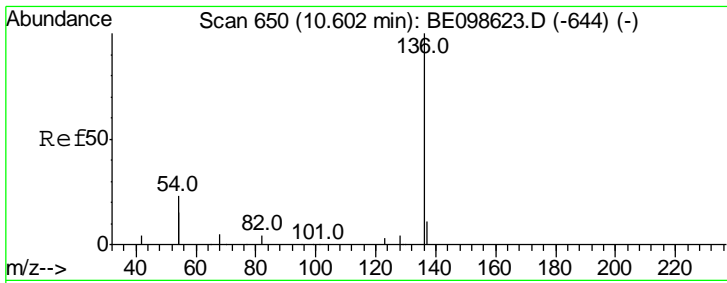
Sohil  
 1/16/2019 8:54:46 AM



#6  
 bis(2-Chloroethyl)ether  
 Concen: 0.167 ng  
 RT: 7.24 min Scan# 380  
 Delta R.T. 0.00 min  
 Lab File: BE098622.D  
 Acq: 15 Jan 2019 11:32

Tgt Ion	Ratio	Lower	Upper
93	100		
63	358.2	267.3	400.9
95	36.0	26.2	39.4



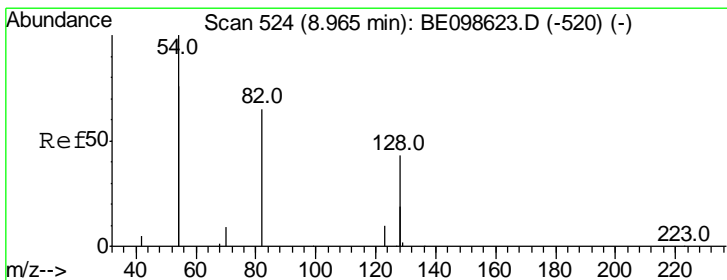
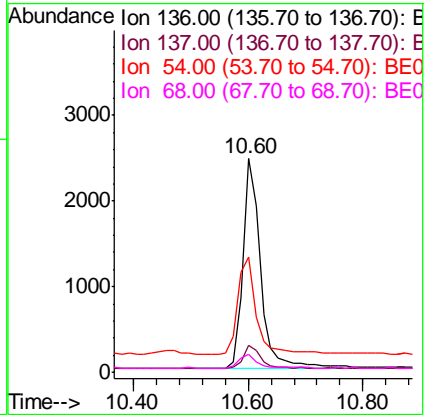
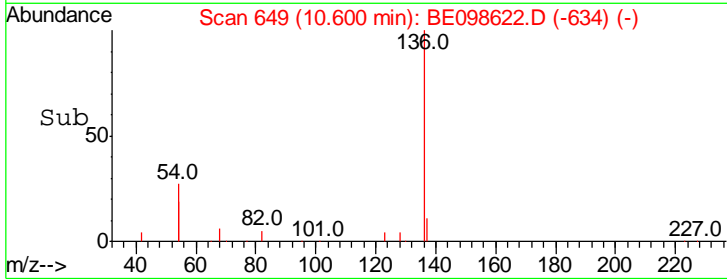
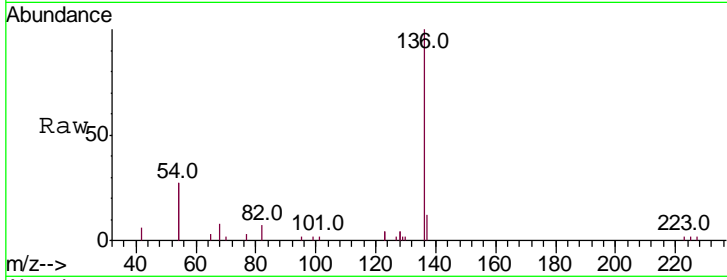


#7  
 Naphthalene-d8  
 Concen: 0.400 ng  
 RT: 10.60 min Scan# 649  
 Delta R.T. -0.00 min  
 Lab File: BE098622.D  
 Acq: 15 Jan 2019 11:32

**Instrument :**  
 BNA\_E  
**ClientSampled :**  
 SSTDICC0.2

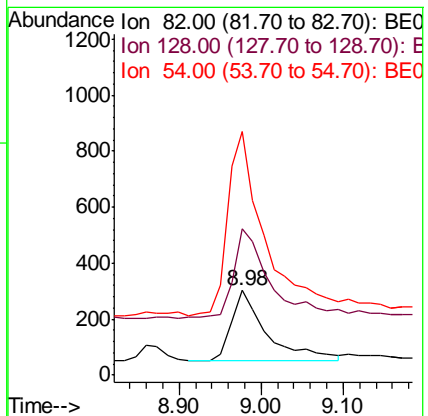
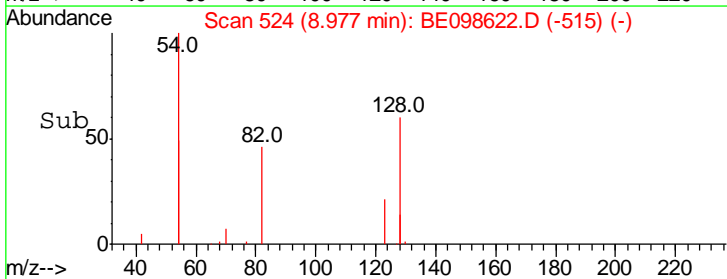
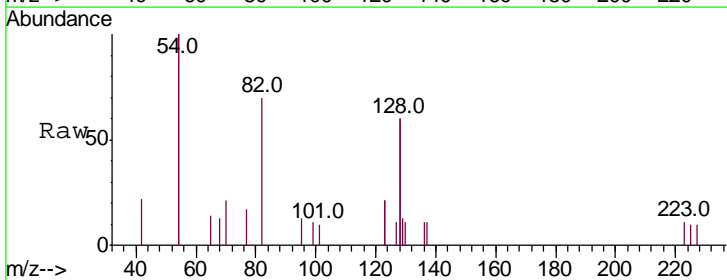
Tgt Ion	Ratio	Lower	Upper
136	100		
137	12.4	9.7	14.5
54	53.8	35.5	53.3#
68	8.1	5.0	7.6#

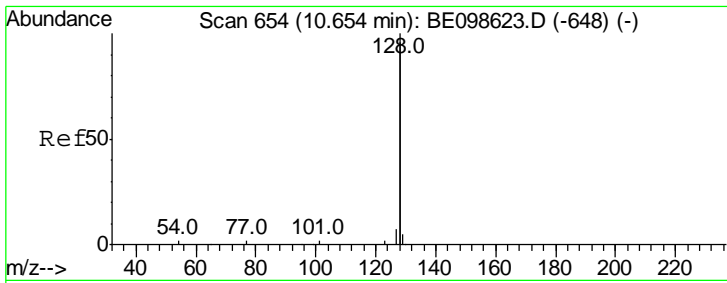
**Manual Integrations**  
**APPROVED**  
 Sohil  
 1/16/2019 8:54:46 AM



#8  
 Nitrobenzene-d5  
 Concen: 0.163 ng  
 RT: 8.98 min Scan# 524  
 Delta R.T. 0.01 min  
 Lab File: BE098622.D  
 Acq: 15 Jan 2019 11:32

Tgt Ion	Ratio	Lower	Upper
82	100		
128	172.9	96.5	144.7#
54	287.1	224.7	337.1



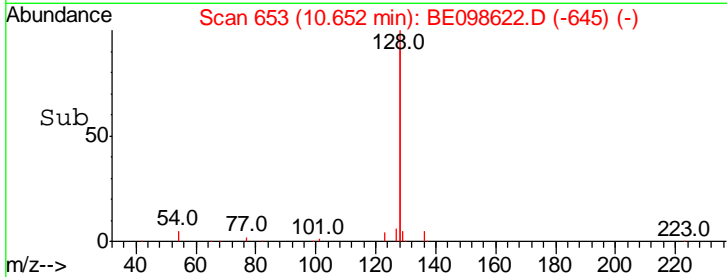
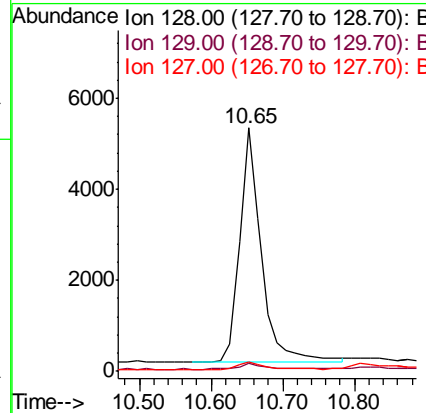
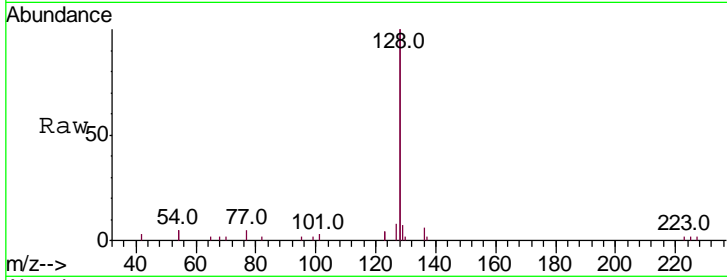


#9  
 Naphthalene  
 Concen: 0.209 ng  
 RT: 10.65 min Scan# 653  
 Delta R.T. -0.00 min  
 Lab File: BE098622.D  
 Acq: 15 Jan 2019 11:32

**Instrument :**  
 BNA\_E  
**ClientSampled :**  
 SSTDICC0.2

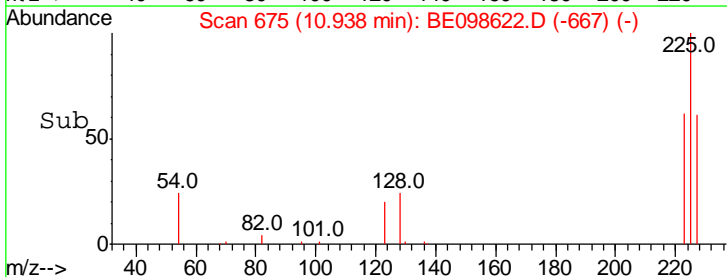
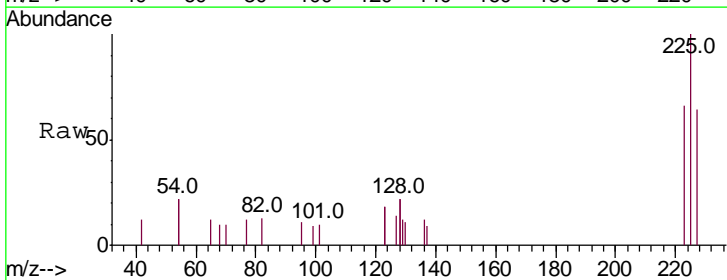
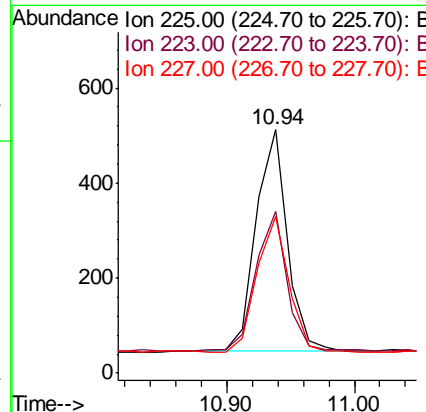
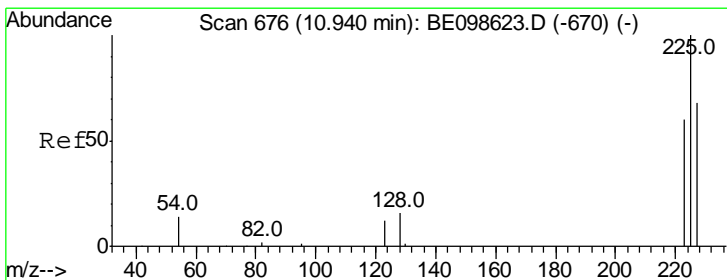
Tgt Ion	Ratio	Lower	Upper
128	100		
129	3.6	2.6	3.8
127	4.0	3.0	4.6

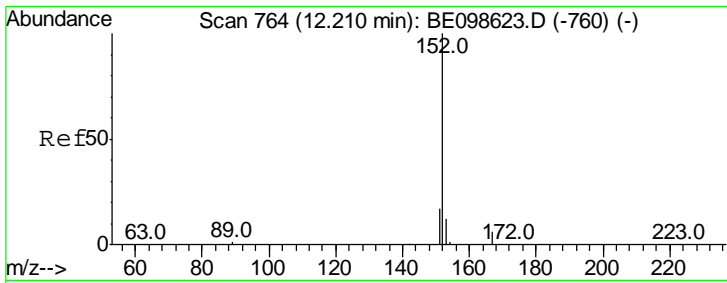
**Manual Integrations**  
**APPROVED**  
 Sohil  
 1/16/2019 8:54:46 AM



#10  
 Hexachlorobutadiene  
 Concen: 0.240 ng  
 RT: 10.94 min Scan# 675  
 Delta R.T. -0.00 min  
 Lab File: BE098622.D  
 Acq: 15 Jan 2019 11:32

Tgt Ion	Ratio	Lower	Upper
225	100		
223	62.8	47.8	71.8
227	62.3	50.5	75.7





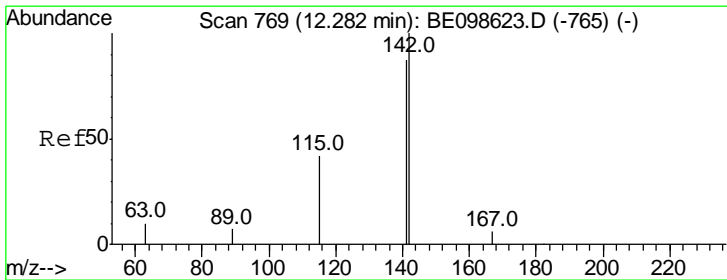
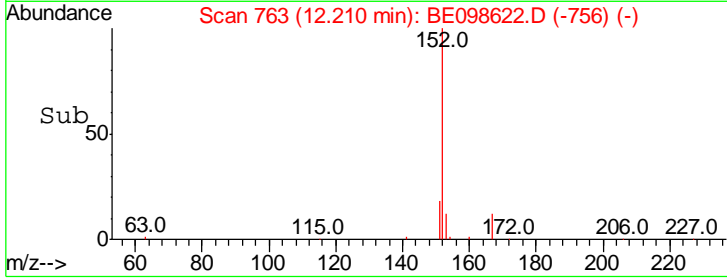
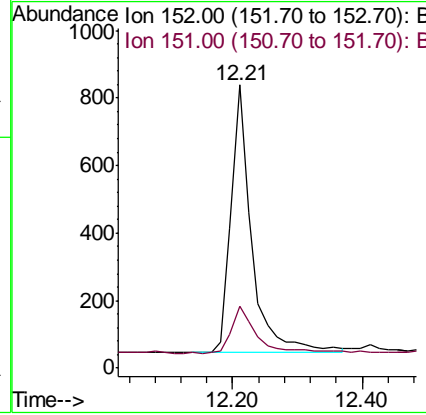
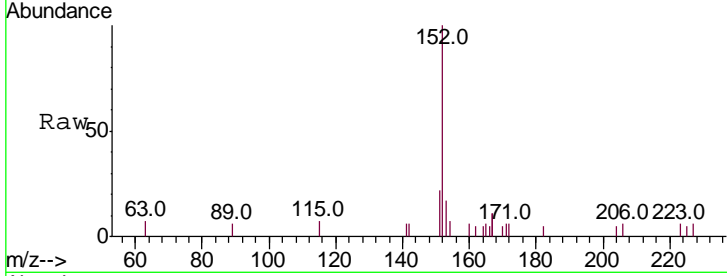
#11  
 2-Methylnaphthalene-d10  
 Concen: 0.209 ng  
 RT: 12.21 min Scan# 763  
 Delta R.T. 0.00 min  
 Lab File: BE098622.D  
 Acq: 15 Jan 2019 11:32

**Instrument :**  
 BNA\_E  
**ClientSampled :**  
 SSTDICC0.2

Tgt Ion	Resp	Lower	Upper
152	100		
151	21.2	16.2	24.4

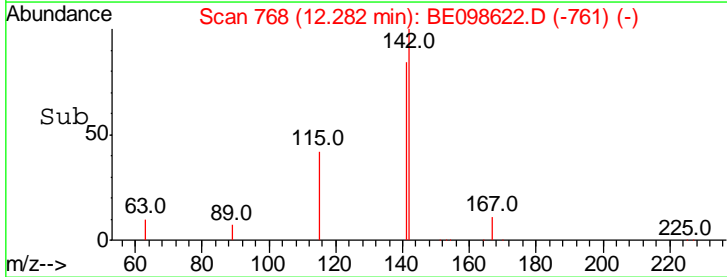
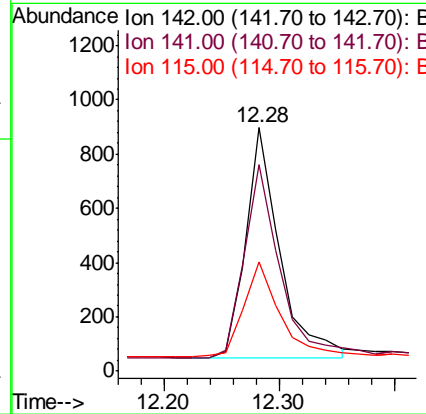
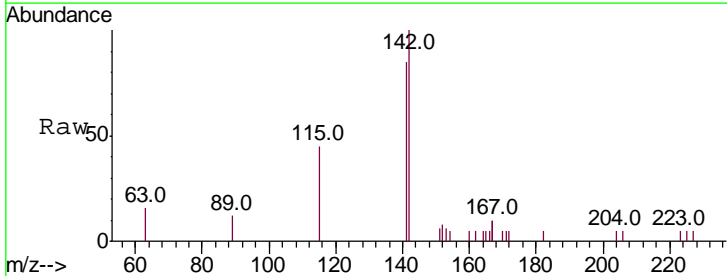
**Manual Integrations**  
**APPROVED**

Sohil  
 1/16/2019 8:54:46 AM

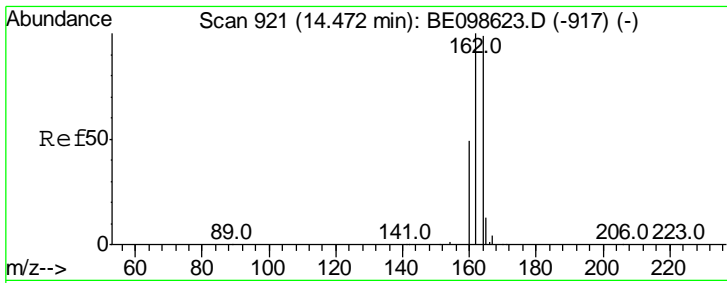


#12  
 2-Methylnaphthalene  
 Concen: 0.207 ng  
 RT: 12.28 min Scan# 768  
 Delta R.T. 0.00 min  
 Lab File: BE098622.D  
 Acq: 15 Jan 2019 11:32

Tgt Ion	Resp	Lower	Upper
142	100		
141	84.6	70.0	105.0
115	45.0	35.2	52.8







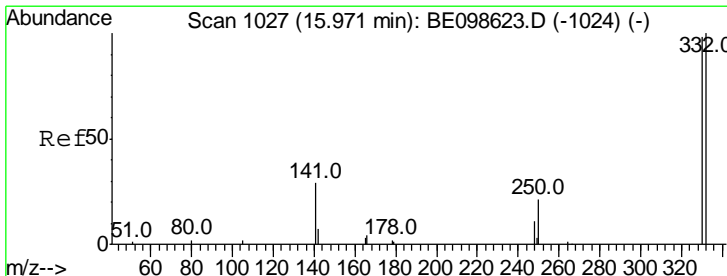
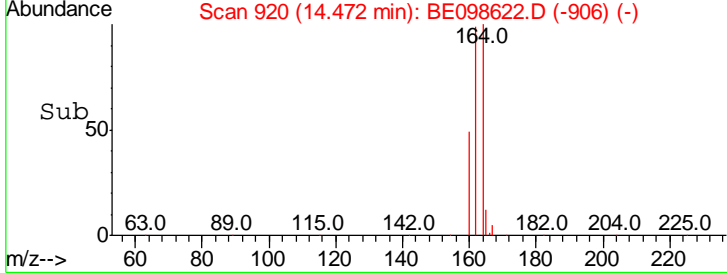
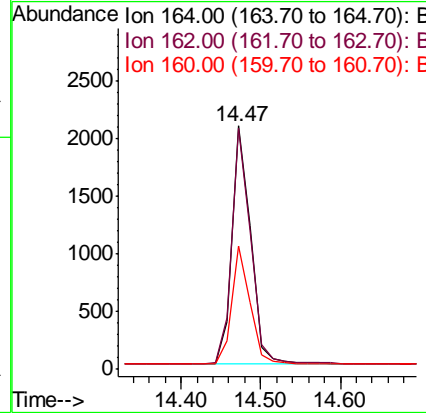
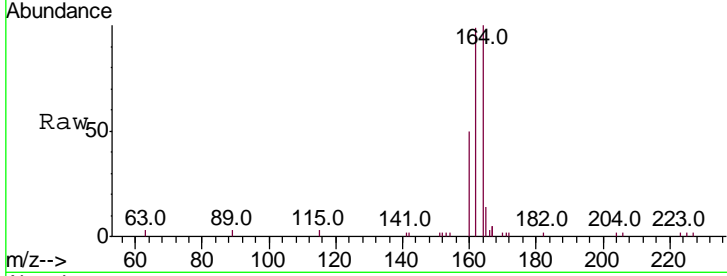
#13  
 Acenaphthene-d10  
 Concen: 0.400 ng  
 RT: 14.47 min Scan# 920  
 Delta R.T. 0.00 min  
 Lab File: BE098622.D  
 Acq: 15 Jan 2019 11:32

**Instrument :**  
 BNA\_E  
**ClientSampled :**  
 SSTDICC0.2

Tgt Ion	Ratio	Lower	Upper
164	100		
162	99.2	80.5	120.7
160	50.5	40.1	60.1

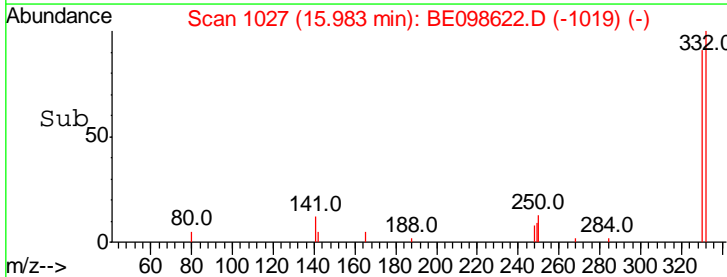
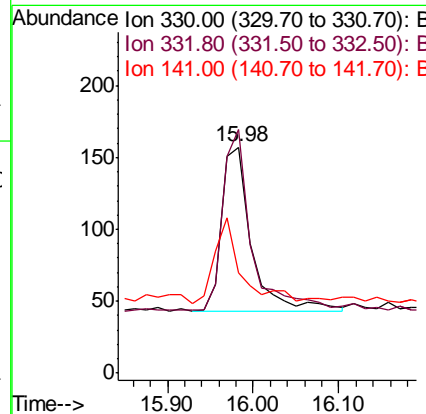
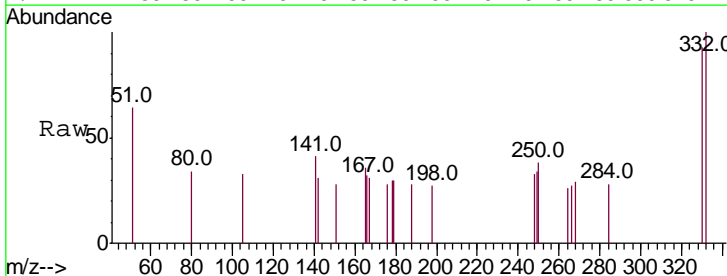
**Manual Integrations**  
**APPROVED**

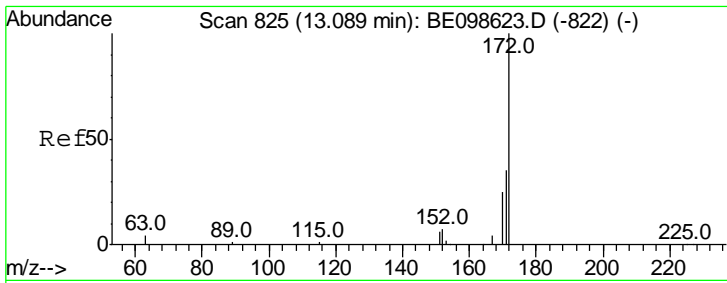
Sohil  
 1/16/2019 8:54:46 AM



#14  
 2,4,6-Tribromophenol  
 Concen: 0.228 ng  
 RT: 15.98 min Scan# 1027  
 Delta R.T. 0.01 min  
 Lab File: BE098622.D  
 Acq: 15 Jan 2019 11:32

Tgt Ion	Ratio	Lower	Upper
330	100		
332	105.0	73.3	109.9
141	48.6	33.1	49.7





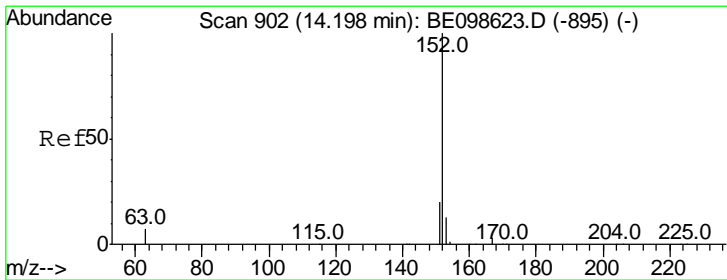
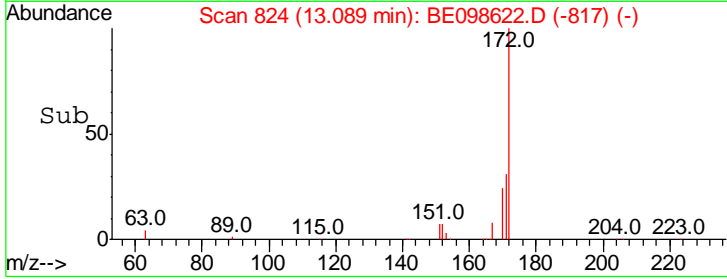
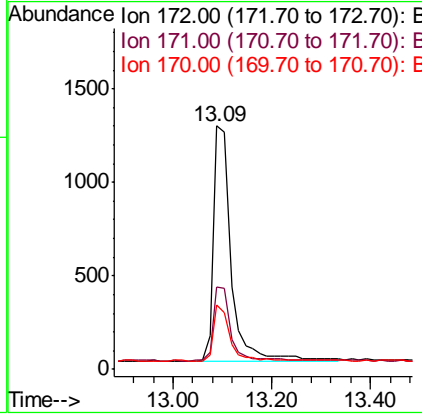
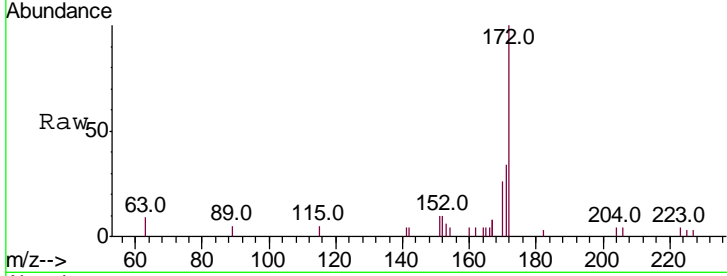
#15  
 2-Fluorobiphenyl  
 Concen: 0.218 ng  
 RT: 13.09 min Scan# 824  
 Delta R.T. 0.00 min  
 Lab File: BE098622.D  
 Acq: 15 Jan 2019 11:32

**Instrument :**  
 BNA\_E  
**ClientSampled :**  
 SSTDICC0.2

Tgt Ion	Resp	Lower	Upper
172	100		
171	33.8	29.0	43.4
170	26.4	20.8	31.2

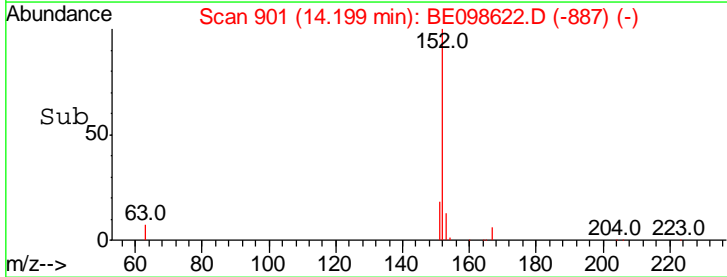
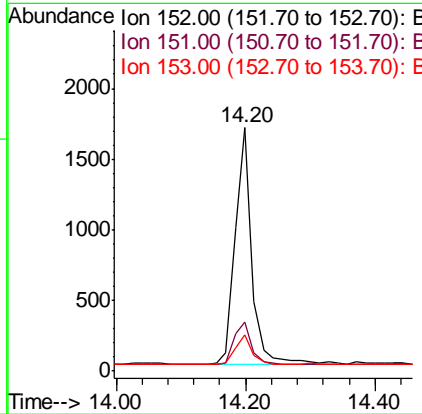
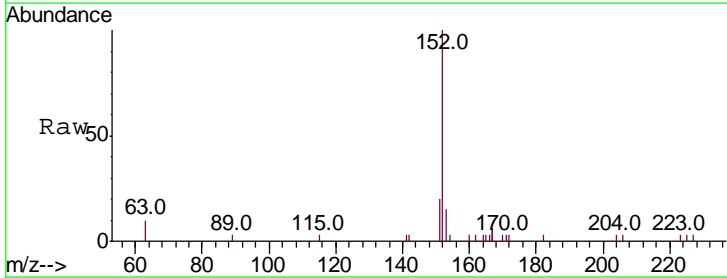
**Manual Integrations**  
**APPROVED**

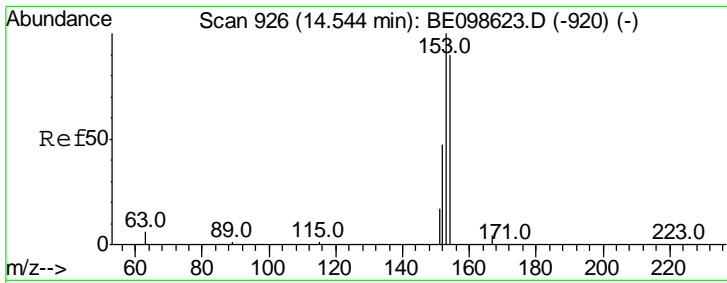
Sohil  
 1/16/2019 8:54:46 AM



#16  
 Acenaphthylene  
 Concen: 0.192 ng  
 RT: 14.20 min Scan# 901  
 Delta R.T. 0.00 min  
 Lab File: BE098622.D  
 Acq: 15 Jan 2019 11:32

Tgt Ion	Resp	Lower	Upper
152	100		
151	19.8	16.3	24.5
153	13.2	10.7	16.1





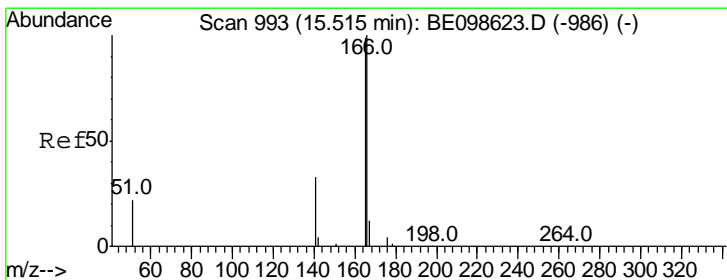
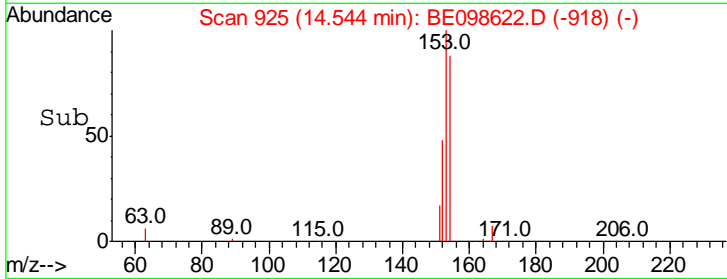
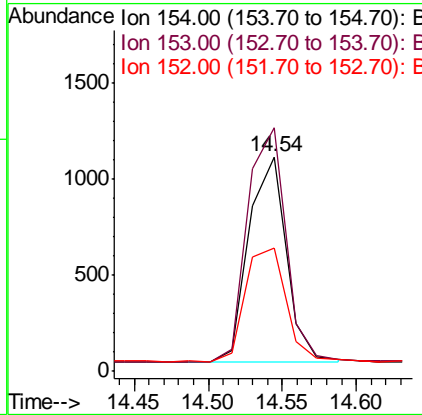
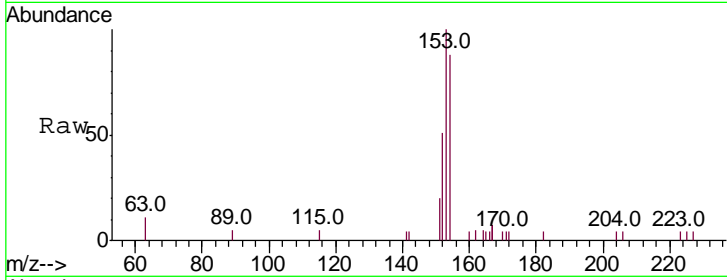
#17  
 Acenaphthene  
 Concen: 0.198 ng  
 RT: 14.54 min Scan# 925  
 Delta R.T. 0.00 min  
 Lab File: BE098622.D  
 Acq: 15 Jan 2019 11:32

**Instrument :**  
 BNA\_E  
**ClientSampled :**  
 SSTDICC0.2

Tgt Ion	Ratio	Lower	Upper
154	100		
153	118.0	93.9	140.9
152	60.8	45.8	68.8

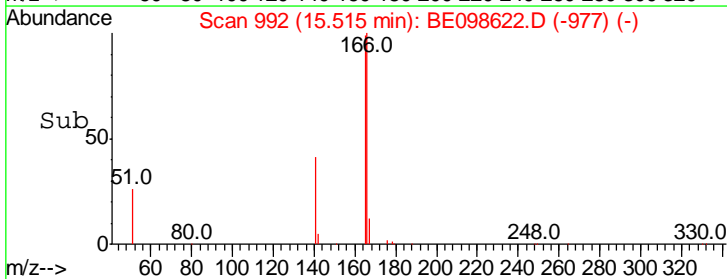
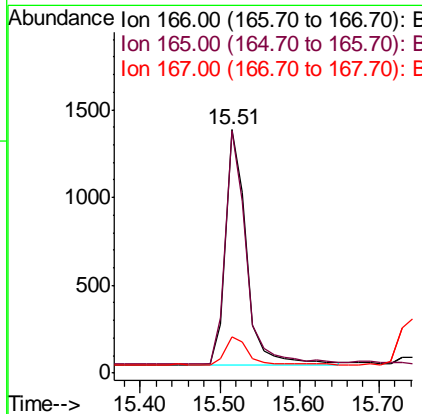
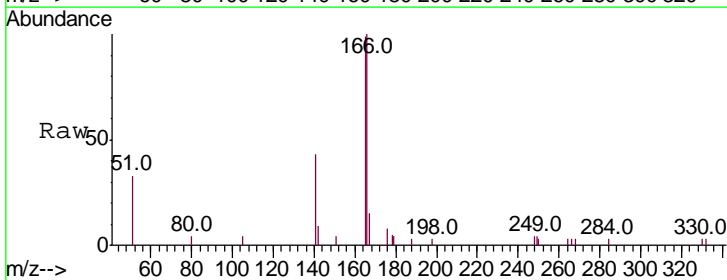
**Manual Integrations**  
**APPROVED**

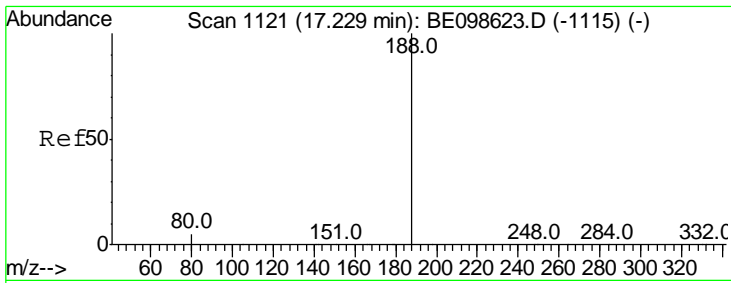
Sohil  
 1/16/2019 8:54:46 AM



#18  
 Fluorene  
 Concen: 0.194 ng  
 RT: 15.51 min Scan# 992  
 Delta R.T. -0.00 min  
 Lab File: BE098622.D  
 Acq: 15 Jan 2019 11:32

Tgt Ion	Ratio	Lower	Upper
166	100		
165	100.2	79.3	118.9
167	13.5	10.6	15.8



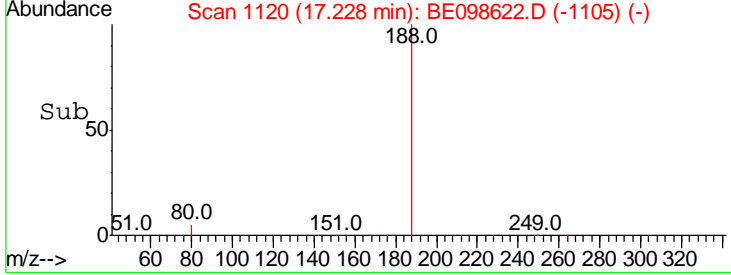
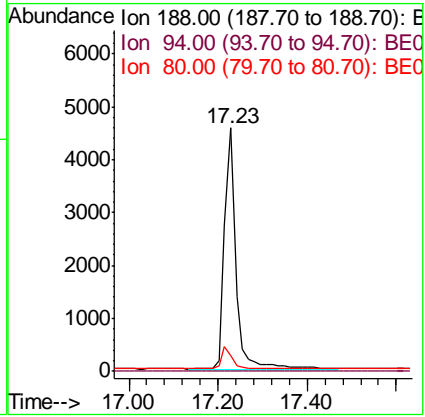
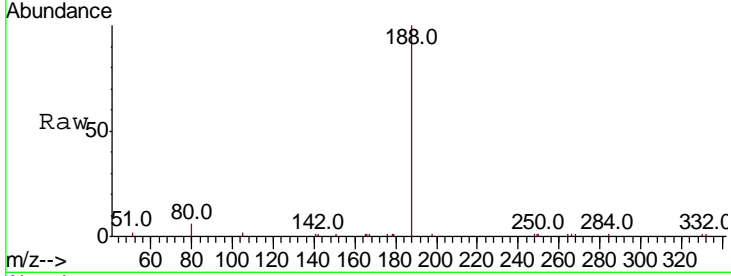


#19  
 Phenanthrene-d10  
 Concen: 0.400 ng  
 RT: 17.23 min Scan# 1120  
 Delta R.T. -0.00 min  
 Lab File: BE098622.D  
 Acq: 15 Jan 2019 11:32

**Instrument :**  
 BNA\_E  
**ClientSampled :**  
 SSTDICC0.2

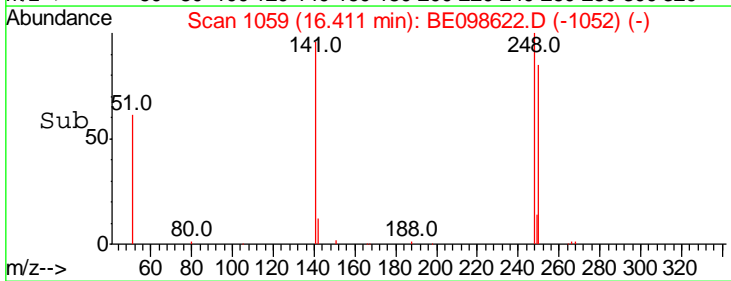
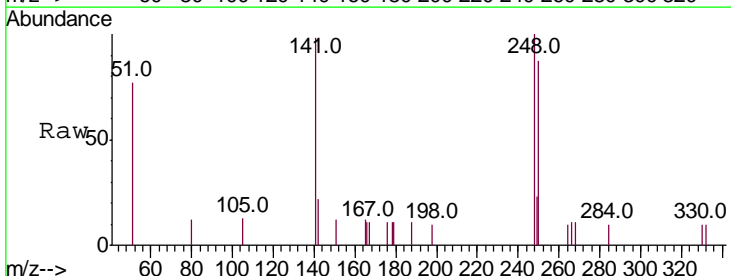
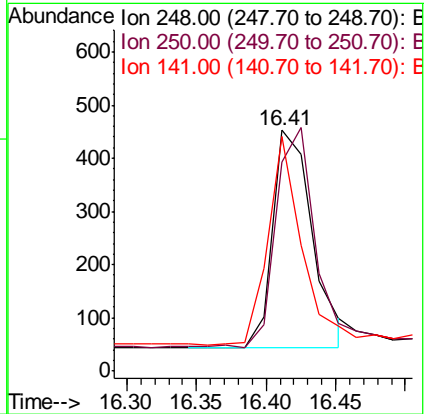
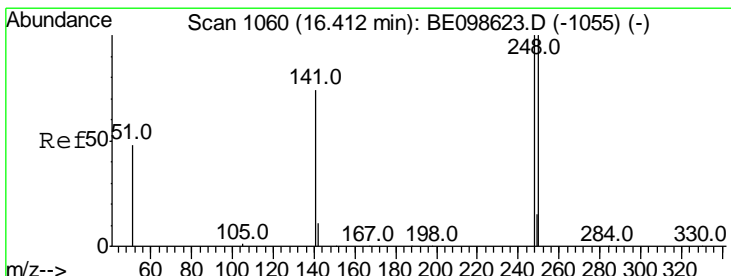
Tgt Ion	Ratio	Lower	Upper
188	100		
94	0.0	0.0	0.0
80	6.4	4.7	7.1

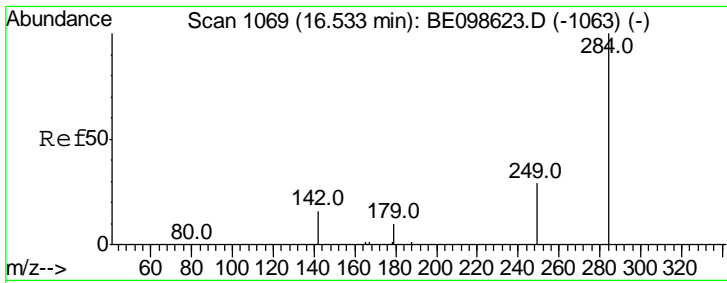
**Manual Integrations**  
**APPROVED**  
 Sohil  
 1/16/2019 8:54:46 AM



#20  
 4-Bromophenyl-phenylether  
 Concen: 0.186 ng  
 RT: 16.41 min Scan# 1059  
 Delta R.T. -0.00 min  
 Lab File: BE098622.D  
 Acq: 15 Jan 2019 11:32

Tgt Ion	Ratio	Lower	Upper
248	100		
250	86.5	80.2	120.4
141	97.6	60.5	90.7#



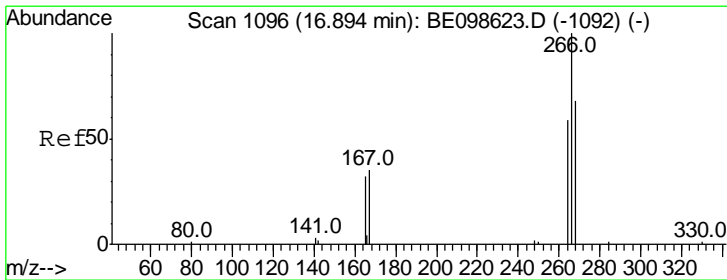
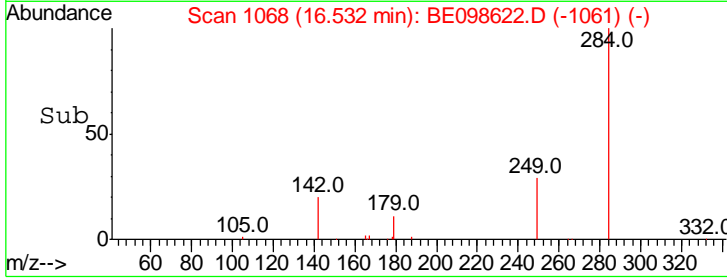
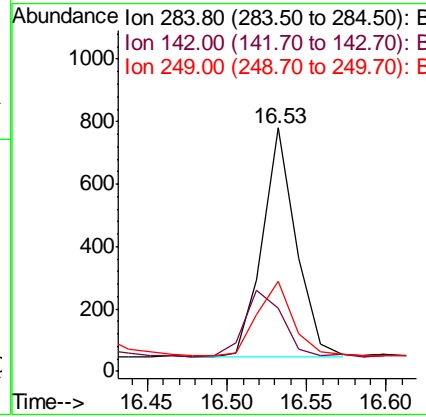
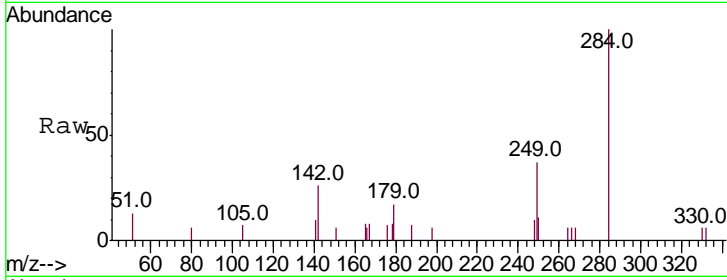


#21  
 Hexachlorobenzene  
 Concen: 0.230 ng  
 RT: 16.53 min Scan# 1068  
 Delta R.T. -0.00 min  
 Lab File: BE098622.D  
 Acq: 15 Jan 2019 11:32

Instrument :  
 BNA\_E  
 ClientSampled :  
 SSTDICC0.2

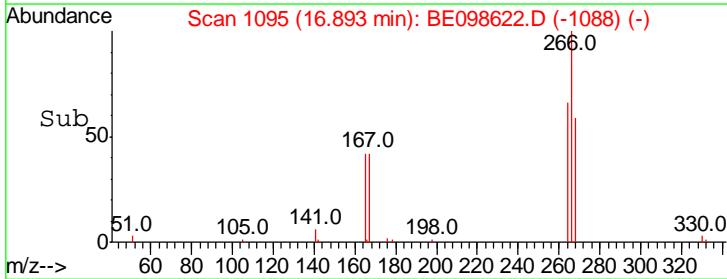
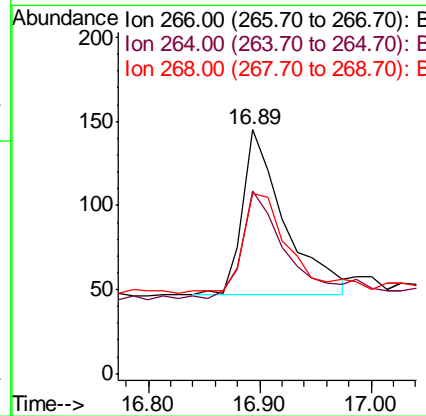
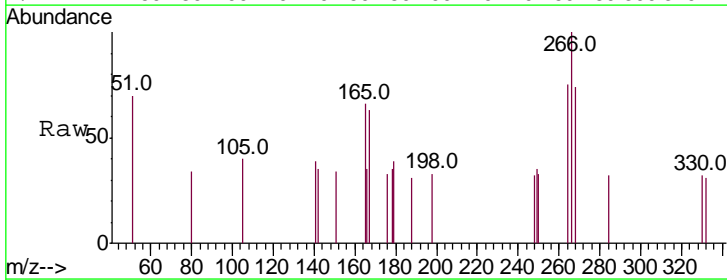
Tgt Ion	Resp	Lower	Upper
284	1085		
142	32.9	25.5	38.3
249	35.1	26.6	39.8

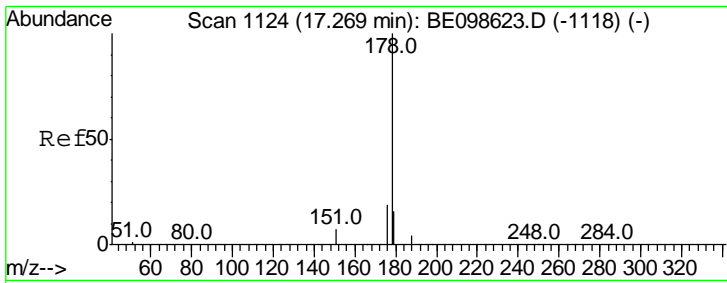
Manual Integrations  
**APPROVED**  
 Sohil  
 1/16/2019 8:54:46 AM



#22  
 Pentachlorophenol  
 Concen: 0.276 ng  
 RT: 16.89 min Scan# 1095  
 Delta R.T. -0.00 min  
 Lab File: BE098622.D  
 Acq: 15 Jan 2019 11:32

Tgt Ion	Resp	Lower	Upper
266	257		
264	75.2	53.7	80.5
268	73.8	59.8	89.8





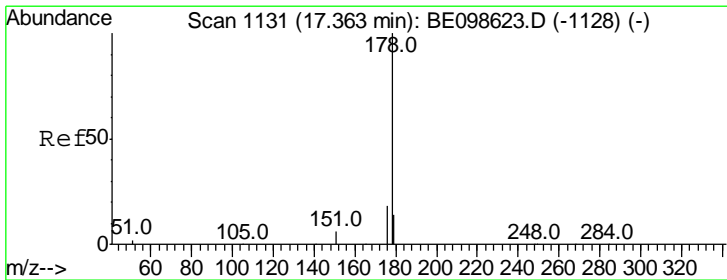
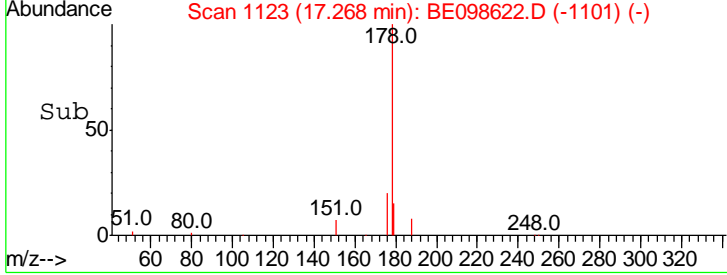
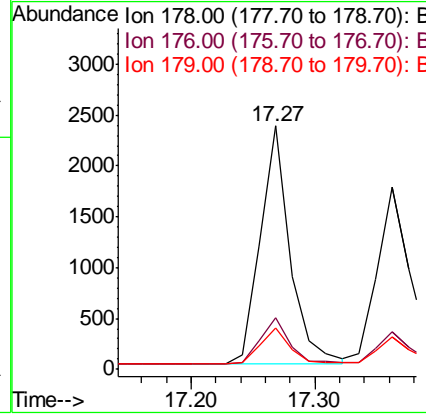
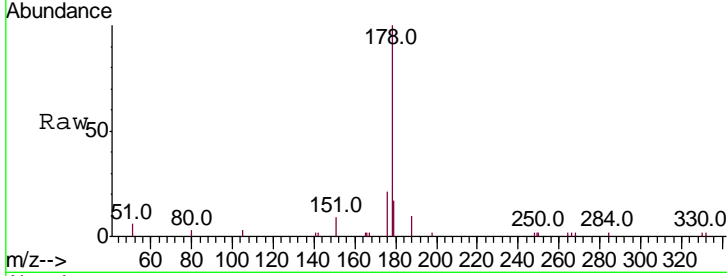
#23  
 Phenanthrene  
 Concen: 0.197 ng  
 RT: 17.27 min Scan# 1123  
 Delta R.T. -0.00 min  
 Lab File: BE098622.D  
 Acq: 15 Jan 2019 11:32

Instrument :  
 BNA\_E  
 ClientSampled :  
 SSTDICC0.2

Tgt Ion	Ratio	Lower	Upper
178	100		
176	19.7	15.9	23.9
179	15.5	12.2	18.4

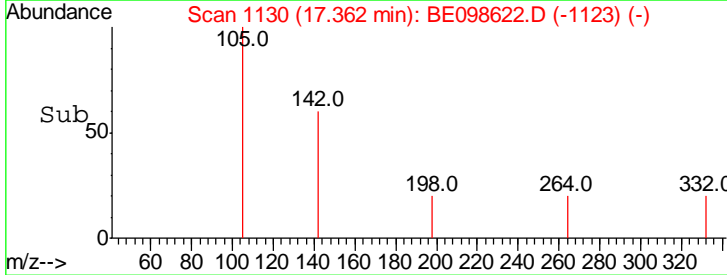
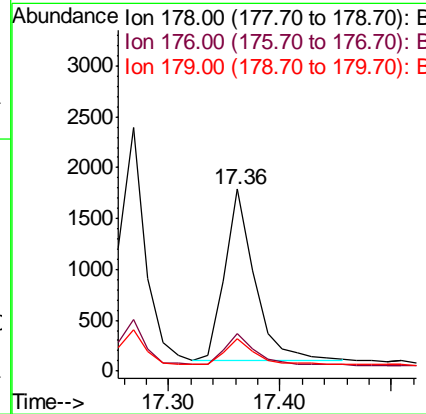
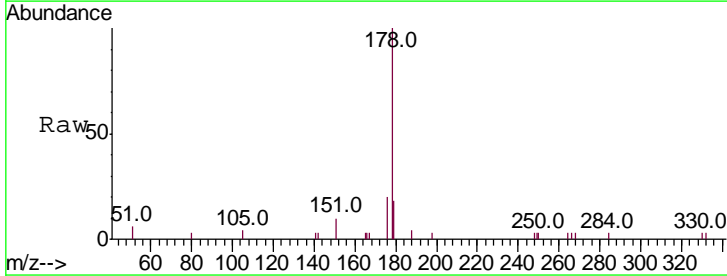
Manual Integrations  
 APPROVED

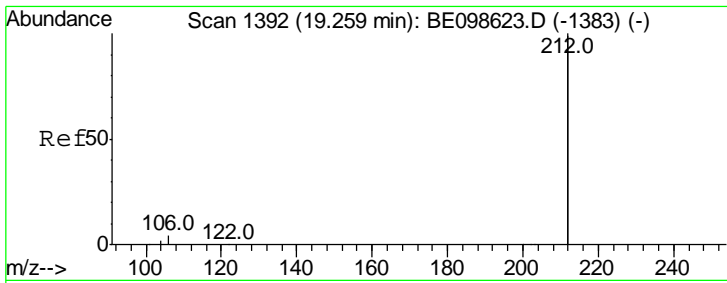
Sohil  
 1/16/2019 8:54:46 AM



#24  
 Anthracene  
 Concen: 0.178 ng  
 RT: 17.36 min Scan# 1130  
 Delta R.T. -0.00 min  
 Lab File: BE098622.D  
 Acq: 15 Jan 2019 11:32

Tgt Ion	Ratio	Lower	Upper
178	100		
176	18.1	14.9	22.3
179	15.6	11.8	17.8





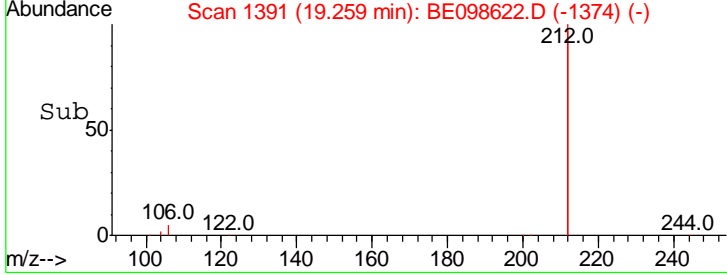
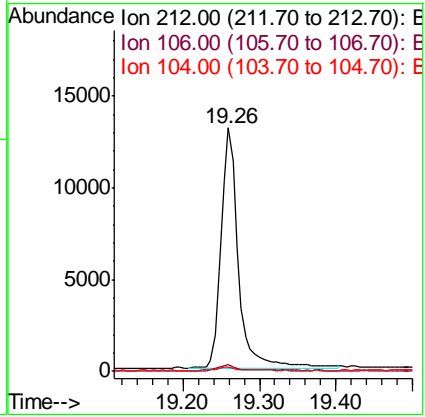
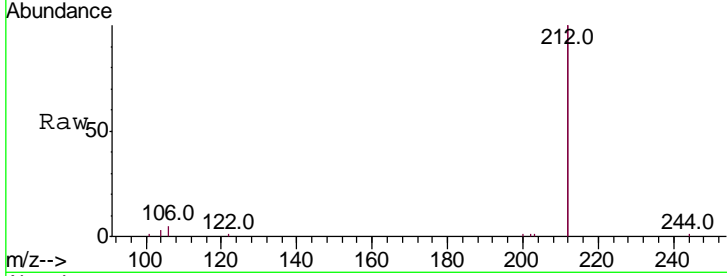
#25  
 Fluoranthene-d10  
 Concen: 0.196 ng  
 RT: 19.26 min Scan# 1391  
 Delta R.T. 0.00 min  
 Lab File: BE098622.D  
 Acq: 15 Jan 2019 11:32

**Instrument :**  
 BNA\_E  
**ClientSampled :**  
 SSTDICC0.2

Tgt Ion	Ratio	Lower	Upper
212	100		
106	2.2	1.7	2.5
104	1.4	1.0	1.6

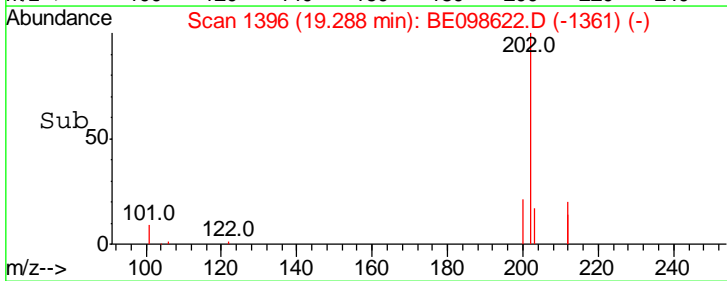
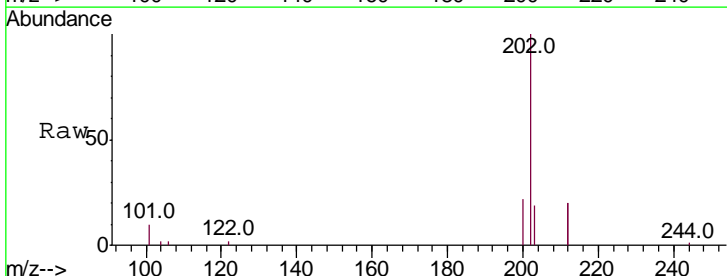
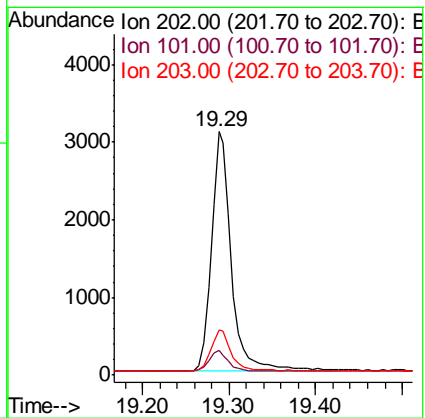
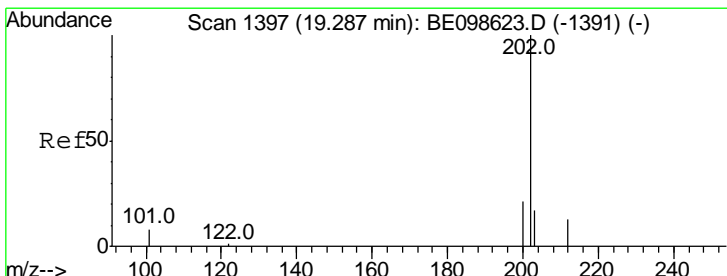
**Manual Integrations**  
**APPROVED**

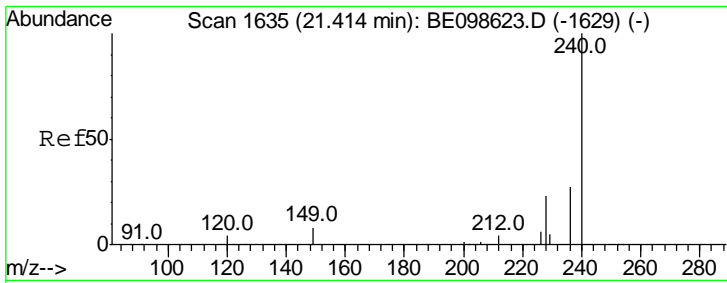
Sohil  
 1/16/2019 8:54:46 AM



#26  
 Fluoranthene  
 Concen: 0.191 ng  
 RT: 19.29 min Scan# 1396  
 Delta R.T. 0.00 min  
 Lab File: BE098622.D  
 Acq: 15 Jan 2019 11:32

Tgt Ion	Ratio	Lower	Upper
202	100		
101	8.1	6.7	10.1
203	17.1	13.3	19.9



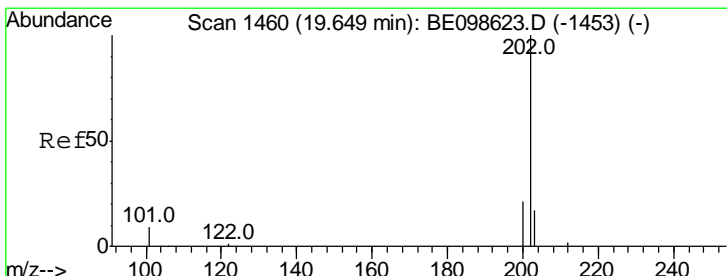
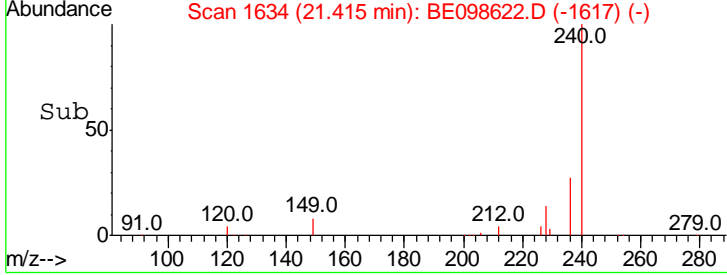
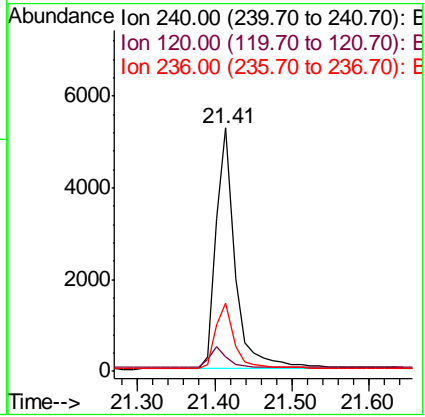
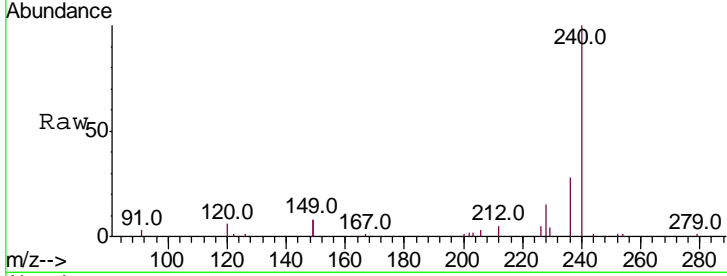


#27  
 Chrysene-d12  
 Concen: 0.400 ng  
 RT: 21.41 min Scan# 1634  
 Delta R.T. 0.00 min  
 Lab File: BE098622.D  
 Acq: 15 Jan 2019 11:32

**Instrument :**  
 BNA\_E  
**ClientSampled :**  
 SSTDICC0.2

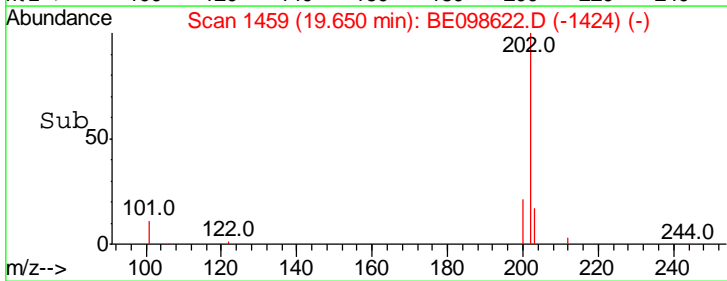
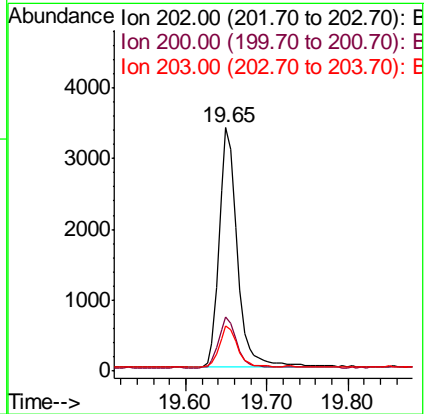
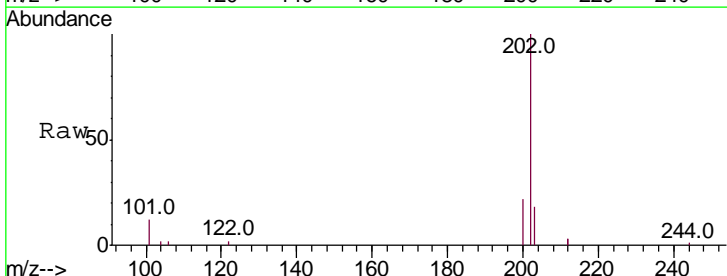
Tgt Ion	Resp	Lower	Upper
240	100		
120	6.1	4.7	7.1
236	28.1	21.9	32.9

**Manual Integrations**  
**APPROVED**  
 Sohil  
 1/16/2019 8:54:46 AM

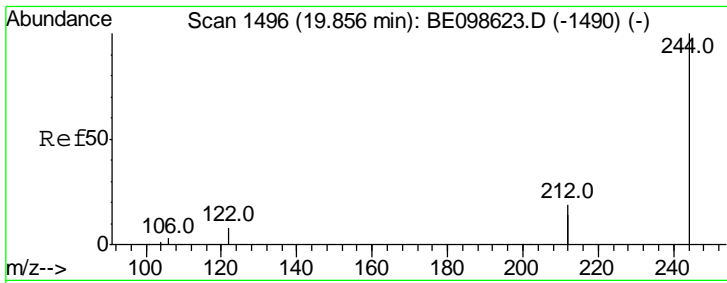


#28  
 Pyrene  
 Concen: 0.184 ng  
 RT: 19.65 min Scan# 1459  
 Delta R.T. 0.00 min  
 Lab File: BE098622.D  
 Acq: 15 Jan 2019 11:32

Tgt Ion	Resp	Lower	Upper
202	100		
200	20.7	17.0	25.6
203	17.2	13.8	20.8







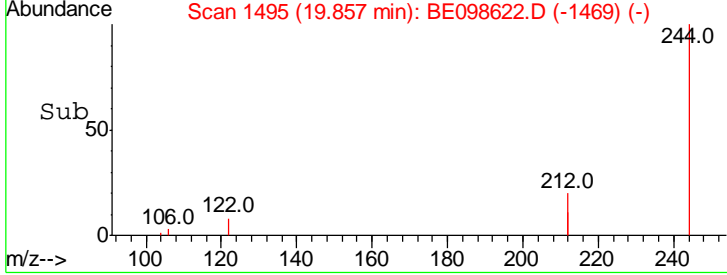
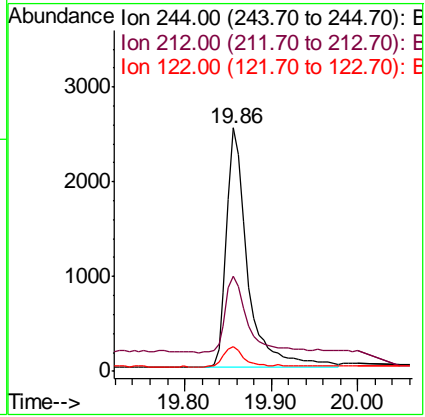
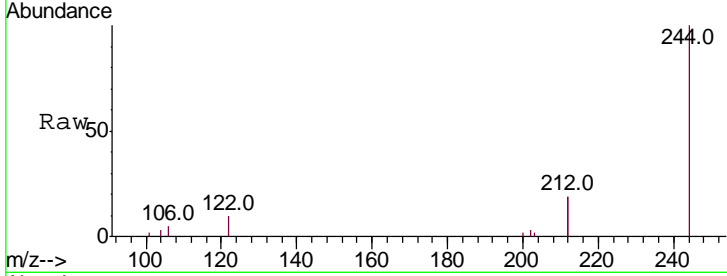
#29  
 Terphenyl-d14  
 Concen: 0.191 ng  
 RT: 19.86 min Scan# 1495  
 Delta R.T. 0.00 min  
 Lab File: BE098622.D  
 Acq: 15 Jan 2019 11:32

**Instrument :**  
 BNA\_E  
**ClientSampled :**  
 SSTDICC0.2

Tgt Ion	Ratio	Lower	Upper
244	100		
212	38.8	29.4	44.2
122	10.0	7.1	10.7

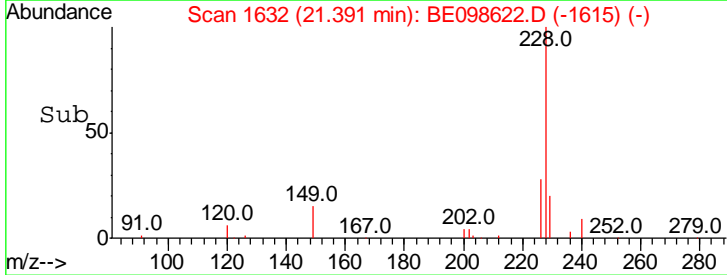
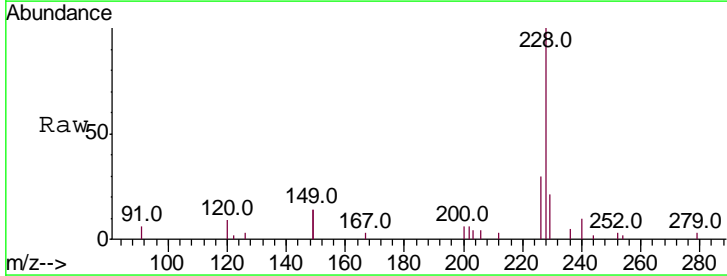
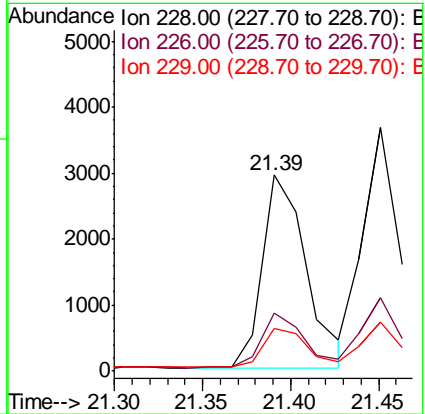
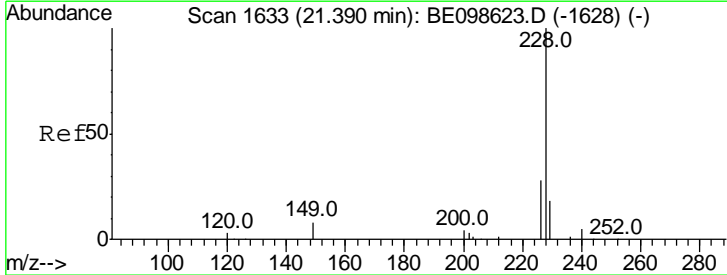
**Manual Integrations**  
**APPROVED**

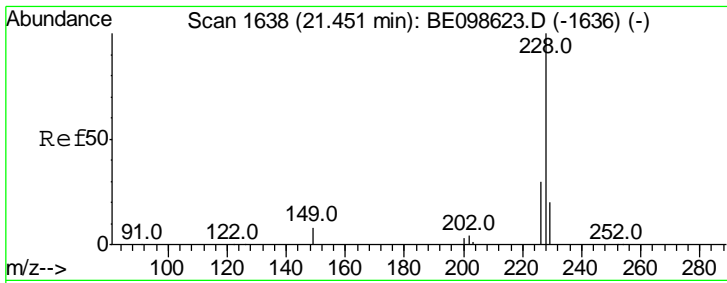
Sohil  
 1/16/2019 8:54:46 AM



#30  
 Benzo(a)anthracene  
 Concen: 0.194 ng  
 RT: 21.39 min Scan# 1632  
 Delta R.T. 0.00 min  
 Lab File: BE098622.D  
 Acq: 15 Jan 2019 11:32

Tgt Ion	Ratio	Lower	Upper
228	100		
226	29.7	23.0	34.4
229	21.5	15.0	22.6





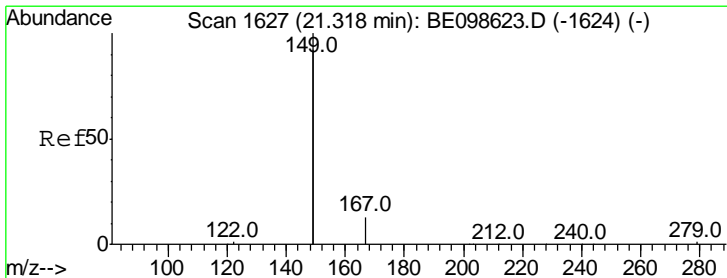
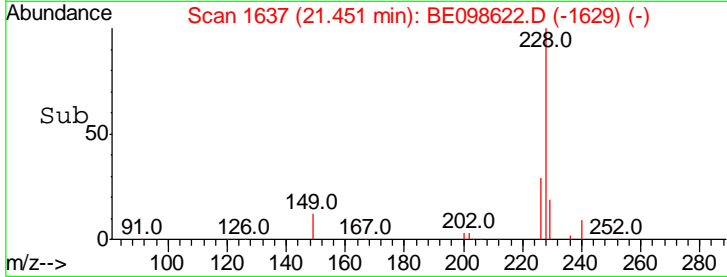
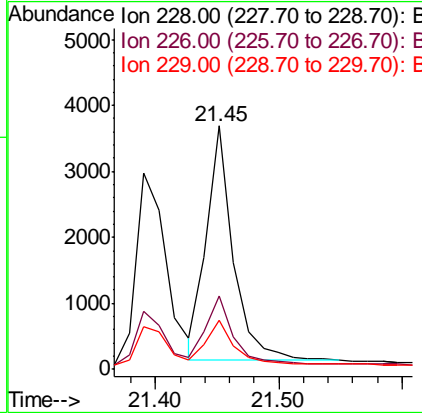
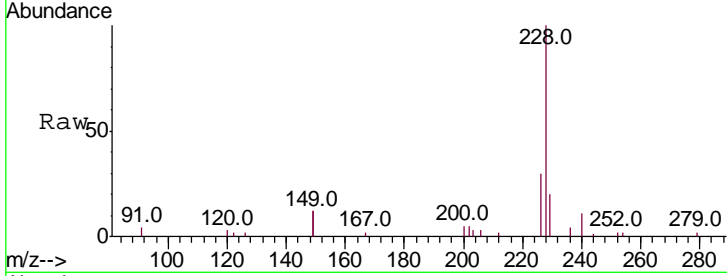
#31  
 Chrysene  
 Concen: 0.198 ng  
 RT: 21.45 min Scan# 1637  
 Delta R.T. 0.00 min  
 Lab File: BE098622.D  
 Acq: 15 Jan 2019 11:32

Instrument :  
 BNA\_E  
 ClientSampled :  
 SSTDICC0.2

Tgt Ion	Resp	Lower	Upper
228	100		
226	30.2	24.6	36.8
229	20.0	16.4	24.6

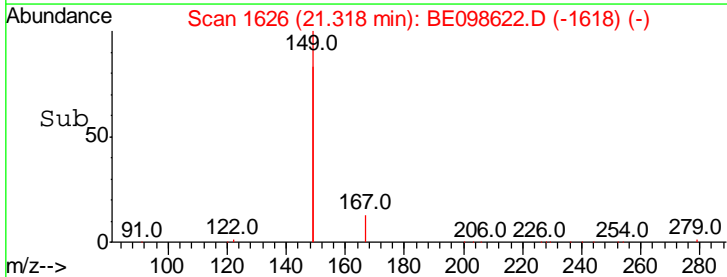
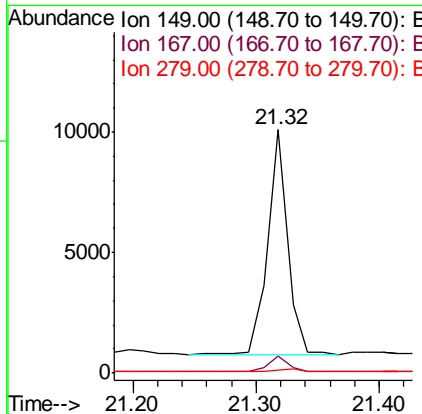
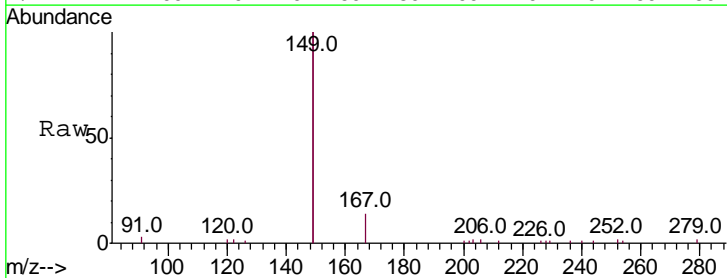
Manual Integrations  
 APPROVED

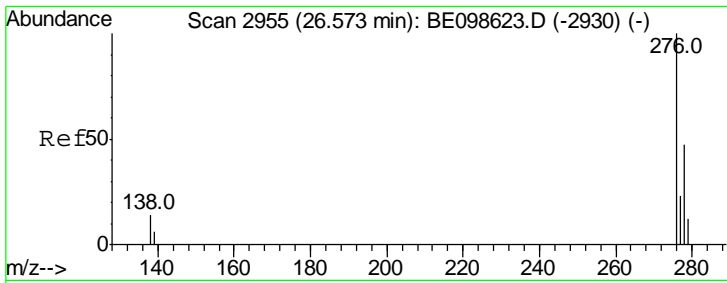
Sohil  
 1/16/2019 8:54:46 AM



#32  
 Bis(2-ethylhexyl)phthalate  
 Concen: 0.200 ng  
 RT: 21.32 min Scan# 1626  
 Delta R.T. 0.00 min  
 Lab File: BE098622.D  
 Acq: 15 Jan 2019 11:32

Tgt Ion	Resp	Lower	Upper
149	100		
167	6.9	5.4	8.2
279	1.3	1.0	1.4





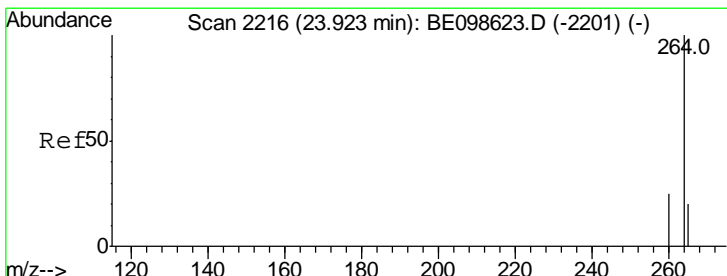
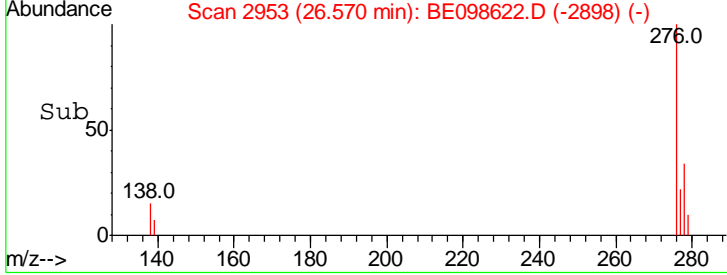
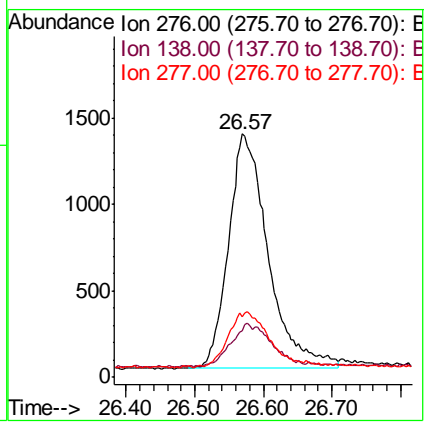
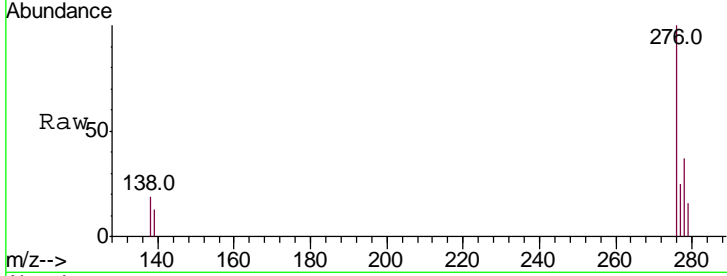
#33  
 Indeno(1,2,3-cd)pyrene  
 Concen: 0.201 ng  
 RT: 26.57 min Scan# 2953  
 Delta R.T. -0.00 min  
 Lab File: BE098622.D  
 Acq: 15 Jan 2019 11:32

**Instrument :**  
 BNA\_E  
**ClientSampled :**  
 SSTDICC0.2

Tgt Ion: 276 Resp: 5466

Ion	Ratio	Lower	Upper
276	100		
138	18.9	13.3	19.9
277	23.5	19.4	29.0

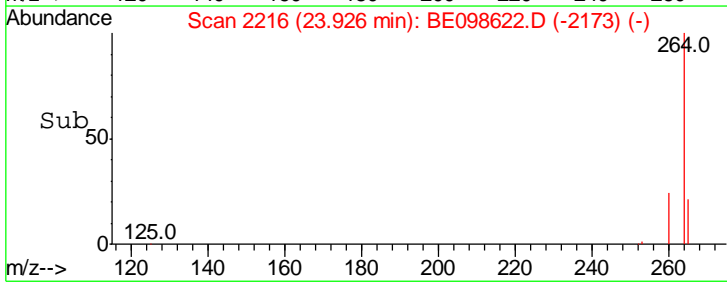
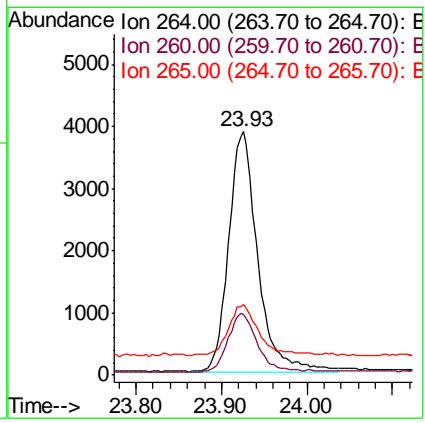
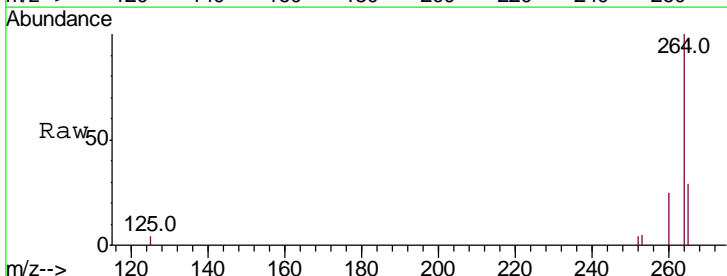
**Manual Integrations**  
**APPROVED**  
 Sohil  
 1/16/2019 8:54:46 AM

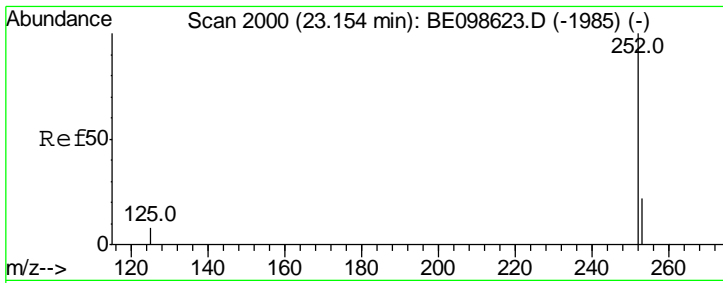


#34  
 Perylene-d12  
 Concen: 0.400 ng  
 RT: 23.93 min Scan# 2216  
 Delta R.T. 0.00 min  
 Lab File: BE098622.D  
 Acq: 15 Jan 2019 11:32

Tgt Ion: 264 Resp: 9140

Ion	Ratio	Lower	Upper
264	100		
260	25.0	20.5	30.7
265	29.0	22.3	33.5





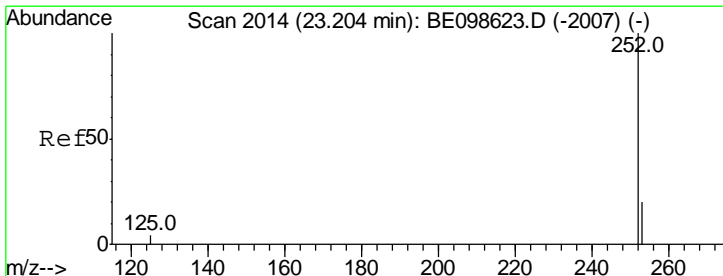
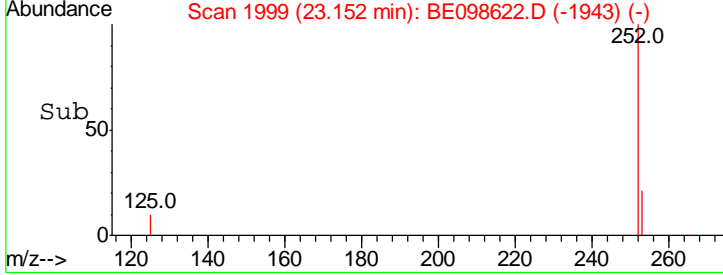
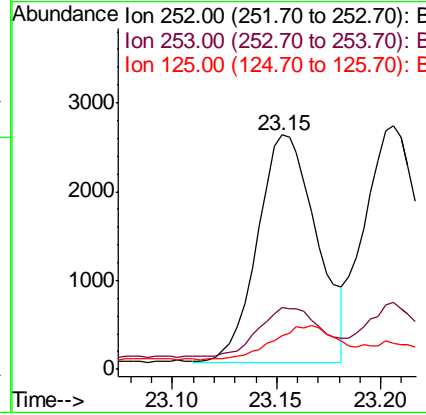
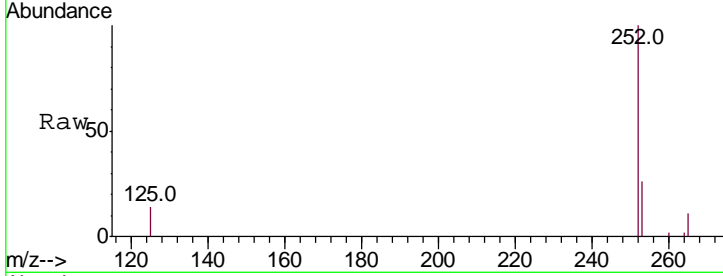
#35  
 Benzo(b)fluoranthene  
 Concen: 0.203 ng m  
 RT: 23.15 min Scan# 1999  
 Delta R.T. -0.00 min  
 Lab File: BE098622.D  
 Acq: 15 Jan 2019 11:32

Instrument :  
 BNA\_E  
 ClientSampled :  
 SSTDICC0.2

Tgt Ion	Resp	Lower	Upper
252	100		
253	26.4	19.4	29.0
125	14.5	8.2	12.4#

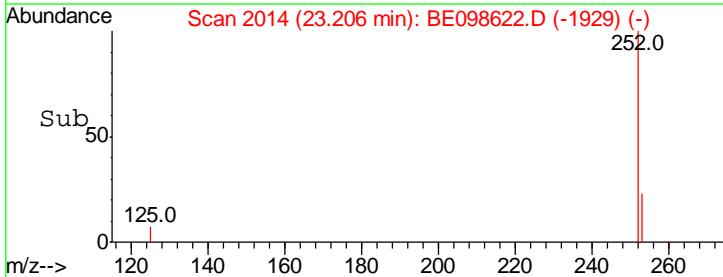
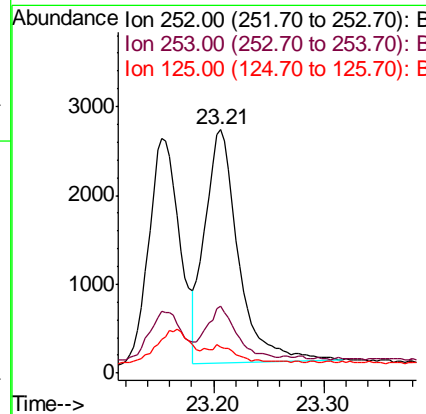
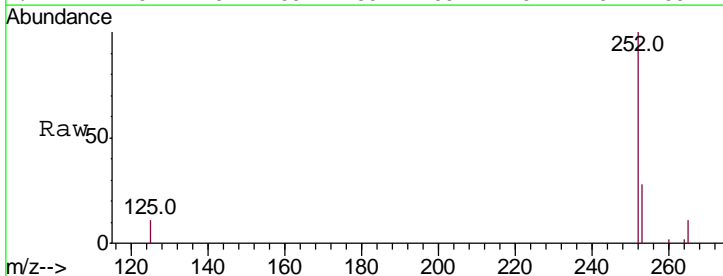
Manual Integrations  
 APPROVED

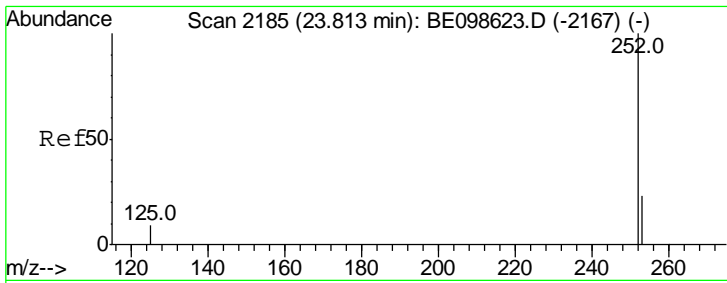
Sohil  
 1/16/2019 8:54:46 AM



#36  
 Benzo(k)fluoranthene  
 Concen: 0.190 ng  
 RT: 23.21 min Scan# 2014  
 Delta R.T. 0.00 min  
 Lab File: BE098622.D  
 Acq: 15 Jan 2019 11:32

Tgt Ion	Resp	Lower	Upper
252	100		
253	27.7	19.0	28.4
125	10.8	7.0	10.4#



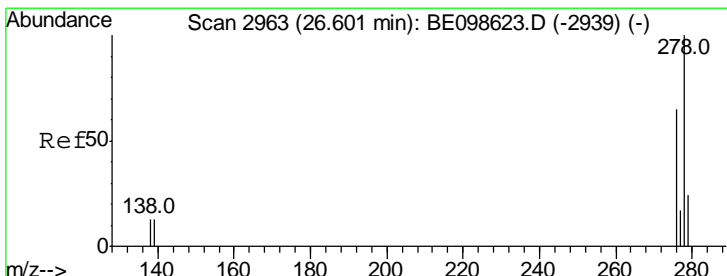
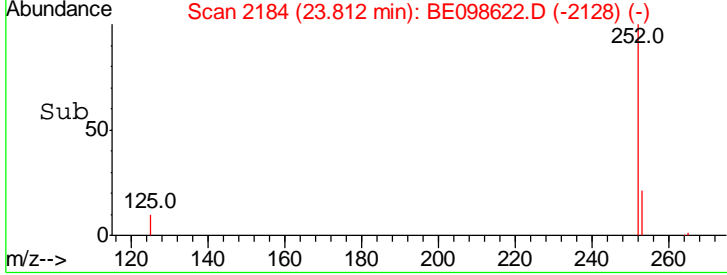
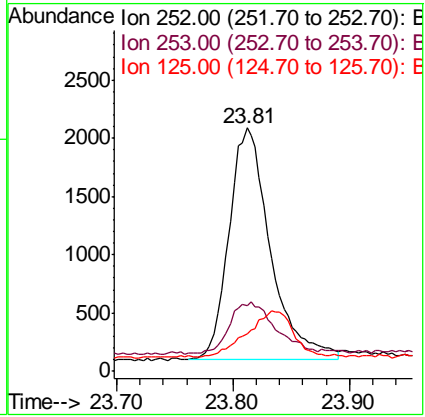
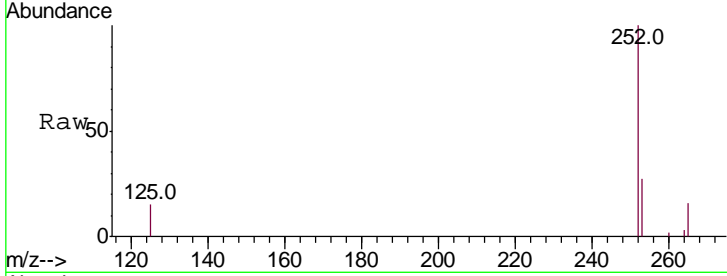


#37  
 Benzo(a)pyrene  
 Concen: 0.191 ng  
 RT: 23.81 min Scan# 2184  
 Delta R.T. -0.00 min  
 Lab File: BE098622.D  
 Acq: 15 Jan 2019 11:32

**Instrument :**  
 BNA\_E  
**ClientSampled :**  
 SSTDICC0.2

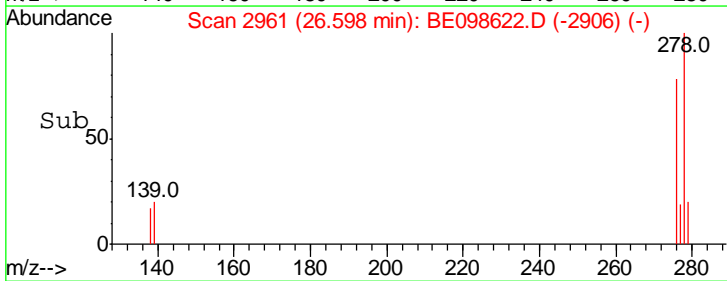
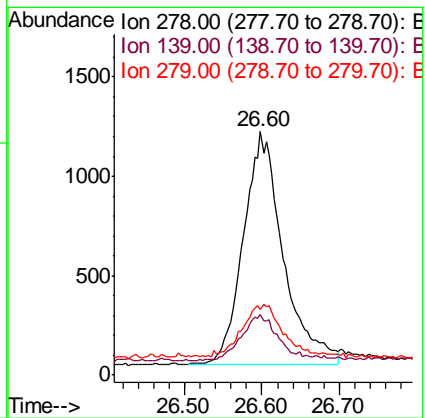
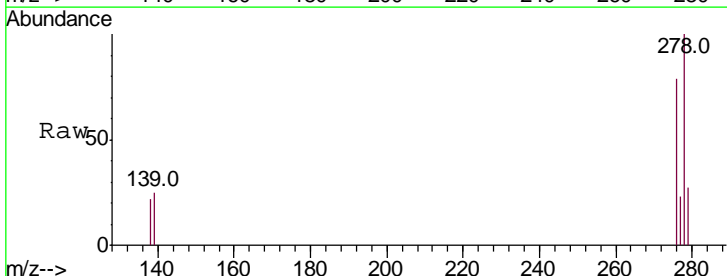
Tgt Ion	Resp	Lower	Upper
252	100		
253	27.2	21.0	31.4
125	15.4	9.2	13.8#

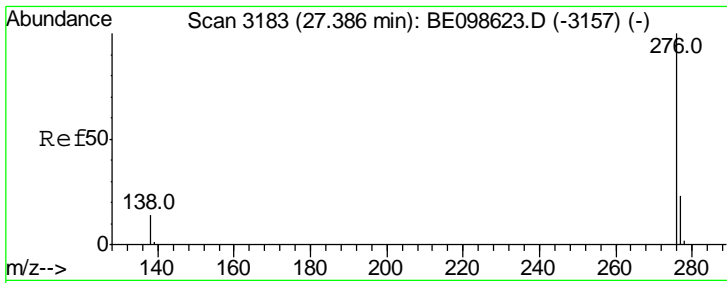
**Manual Integrations**  
**APPROVED**  
 Sohil  
 1/16/2019 8:54:46 AM



#38  
 Dibenzo(a,h)anthracene  
 Concen: 0.172 ng  
 RT: 26.60 min Scan# 2961  
 Delta R.T. -0.00 min  
 Lab File: BE098622.D  
 Acq: 15 Jan 2019 11:32

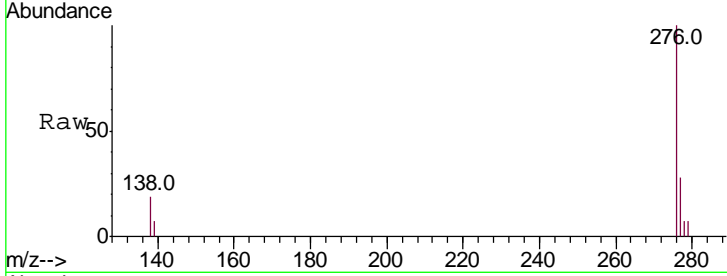
Tgt Ion	Resp	Lower	Upper
278	100		
139	24.7	12.7	19.1#
279	26.9	22.0	33.0





#39  
 Benzo(a,h,i)perylene  
 Concen: 0.198 ng  
 RT: 27.39 min Scan# 3182  
 Delta R.T. 0.00 min  
 Lab File: BE098622.D  
 Acq: 15 Jan 2019 11:32

**Instrument :**  
 BNA\_E  
**ClientSampled :**  
 SSTDICC0.2



Tot Ion: 276 Resp: 4842

Ion	Ratio	Lower	Upper
276	100		
277	27.8	20.3	30.5
138	18.6	13.3	19.9

**Manual Integrations**  
**APPROVED**  
 Sohil  
 1/16/2019 8:54:46 AM

