

Data Path : Z:\SVOASRV\HPCHEM1\BNA_E\DATA\BE032219\
 Data File : BE099096.D
 Acq On : 23 Mar 2019 1:10
 Operator : JU/SJ
 Sample : K1947-05
 Misc :
 ALS Vial : 14 Sample Multiplier: 1

Instrument :
 BNA_E
 ClientSampleId :
 PST-025-B130-031319

Manual Integrations
 APPROVED

Sohil
 3/25/2019 12:12:15 PM

Quant Time: Mar 23 02:12:26 2019
 Quant Method : Z:\SVOASRV\HPCHEM1\BNA_E\METHODS\8270-SIM-BE032219.M
 Quant Title : ASP BNA STANDARDS FOR 5 POINT CALIBRATION
 QLast Update : Sat Mar 23 00:46:37 2019
 Response via : Initial Calibration

Internal Standards	R.T.	QIon	Response	Conc	Units	Dev(Min)
1) 1,4-Dichlorobenzene-d4	7.84	152	3876	0.40	ng	0.00
7) Naphthalene-d8	10.64	136	15273	0.40	ng	0.00
13) Acenaphthene-d10	14.49	164	10099	0.40	ng	0.00
19) Phenanthrene-d10	17.21	188	26464	0.40	ng	0.00
27) Chrysene-d12	21.39	240	38888	0.40	ng	0.00
34) Perylene-d12	23.90	264	43498	0.40	ng	0.00
System Monitoring Compounds						
4) 2-Fluorophenol	5.41	112	4769	0.41	ng	0.00
5) Phenol-d6	6.99	99	6929	0.42	ng	0.00
8) Nitrobenzene-d5	8.99	82	4093m	0.61	ng	0.00
11) 2-Methylnaphthalene-d10	12.22	152	8486	0.31	ng	-0.01
14) 2,4,6-Tribromophenol	15.96	330	1859	0.63	ng	0.00
15) 2-Fluorobiphenyl	13.12	172	12770	0.32	ng	0.00
25) Fluoranthene-d10	19.24	212	98948	0.28	ng	0.00
29) Terphenyl-d14	19.84	244	20031	0.24	ng	0.00
Target Compounds						
23) Phenanthrene	17.25	178	3541	0.045	ng	# 82
26) Fluoranthene	19.27	202	6149	0.056	ng	# 81
28) Pyrene	19.63	202	6233	0.047	ng	# 94
30) Benzo(a)anthracene	21.37	228	3162	0.023	ng	# 92
31) Chrysene	21.43	228	3989	0.029	ng	# 90
32) Bis(2-ethylhexyl)phthalate	21.31	149	30304	0.170	ng	98
35) Benzo(b)fluoranthene	23.12	252	4900	0.033	ng	# 66
36) Benzo(k)fluoranthene	23.17	252	3322m	0.023	ng	
37) Benzo(a)pyrene	23.79	252	3210	0.023	ng	# 54

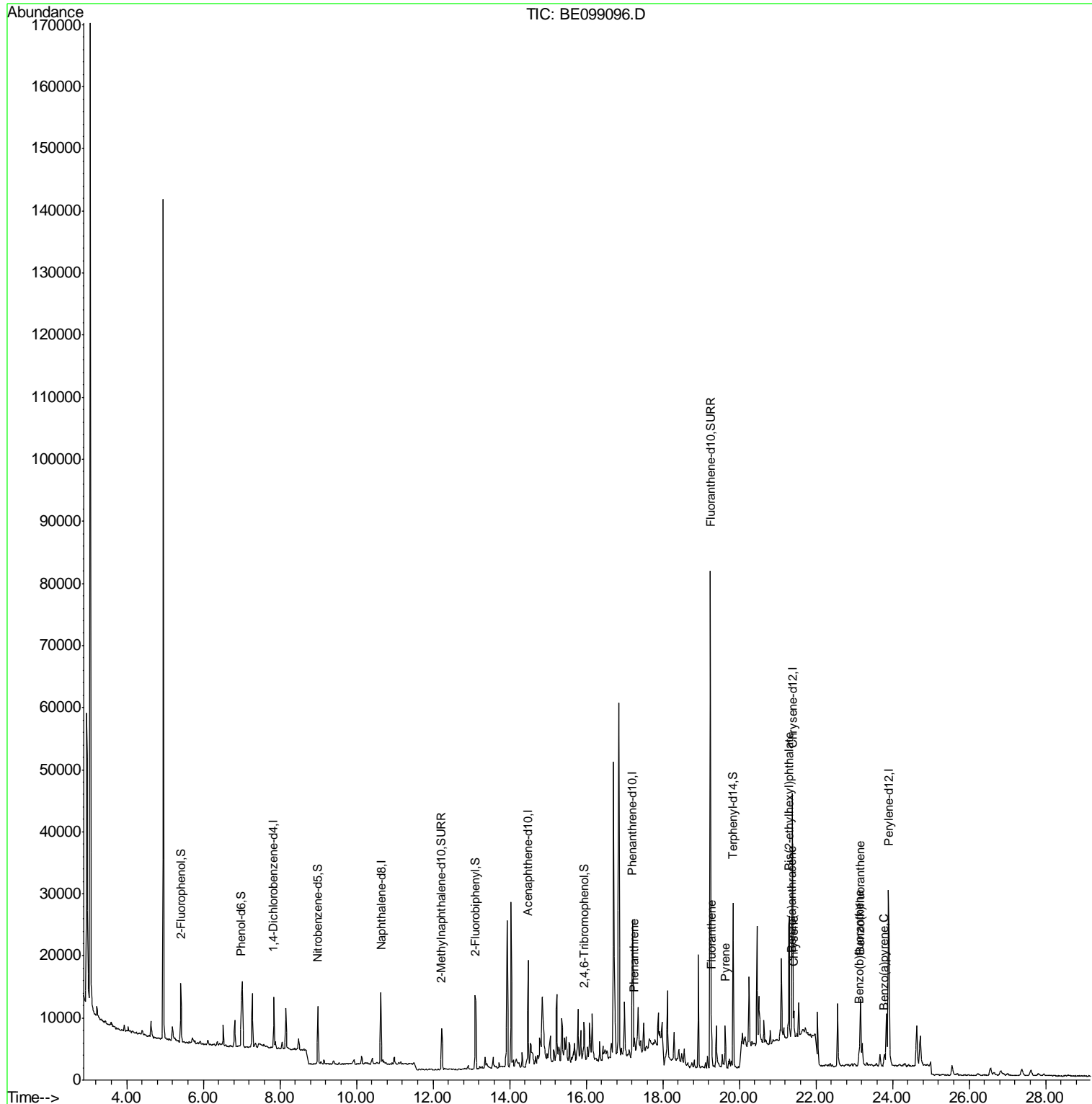
(#) = qualifier out of range (m) = manual integration (+) = signals summed

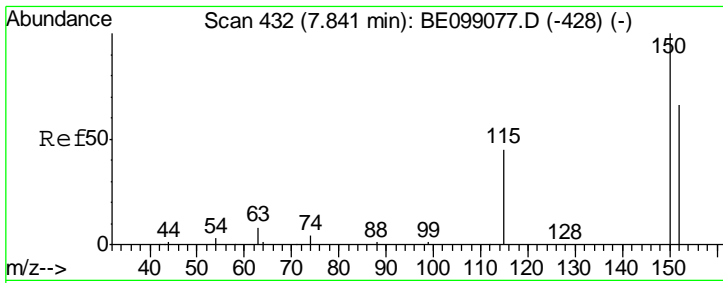
Data Path : Z:\SVOASRV\HPCHEM1\BNA_E\DATA\BE032219\
 Data File : BE099096.D
 Acq On : 23 Mar 2019 1:10
 Operator : JU/SJ
 Sample : K1947-05
 Misc :
 ALS Vial : 14 Sample Multiplier: 1

Instrument :
 BNA_E
 ClientSampleId :
 PST-025-B130-031319

Manual Integrations
 APPROVED
 Sohil
 3/25/2019 12:12:15 PM

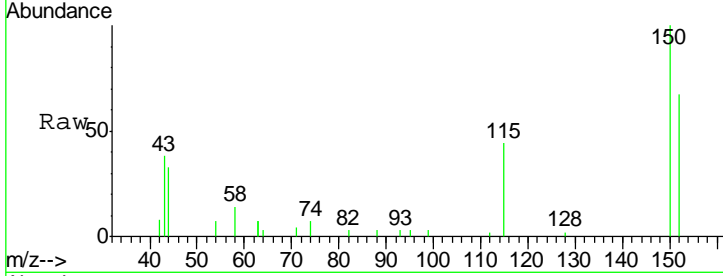
Quant Time: Mar 23 02:12:26 2019
 Quant Method : Z:\SVOASRV\HPCHEM1\BNA_E\METHODS\8270-SIM-BE032219.M
 Quant Title : ASP BNA STANDARDS FOR 5 POINT CALIBRATION
 QLast Update : Sat Mar 23 00:46:37 2019
 Response via : Initial Calibration





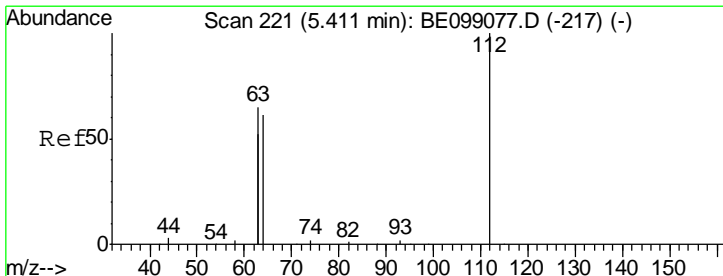
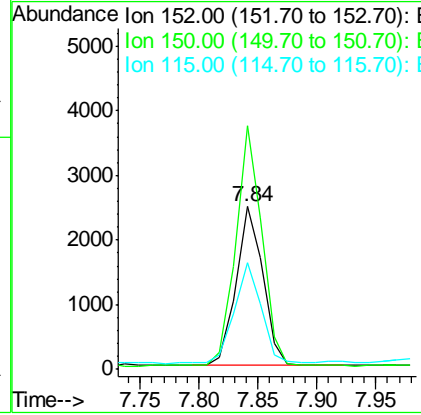
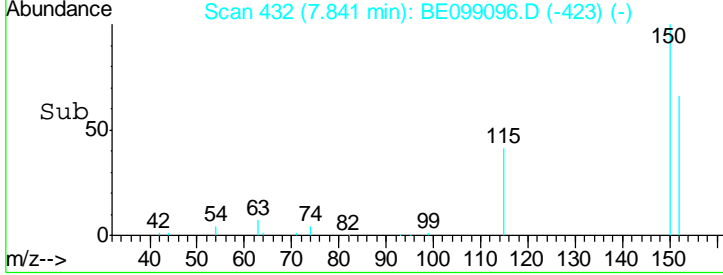
#1
 1,4-Dichlorobenzene-d4
 Concen: 0.400 ng
 RT: 7.84 min Scan# 432
 Delta R.T. -0.00 min
 Lab File: BE099096.D
 Acq: 23 Mar 2019 1:10

Instrument :
 BNA_E
ClientSampled :
 PST-025-B130-031319

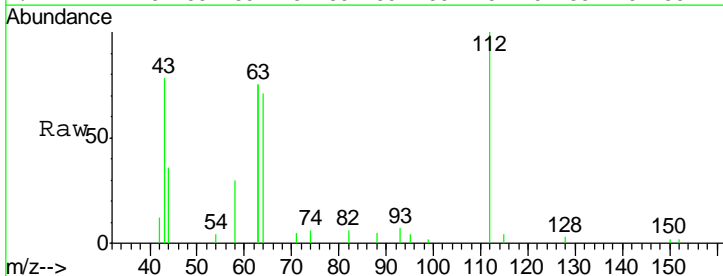


Tgt Ion	Resp	Lower	Upper
152	3876		
152	100		
150	149.8	122.5	183.7
115	65.4	57.4	86.2

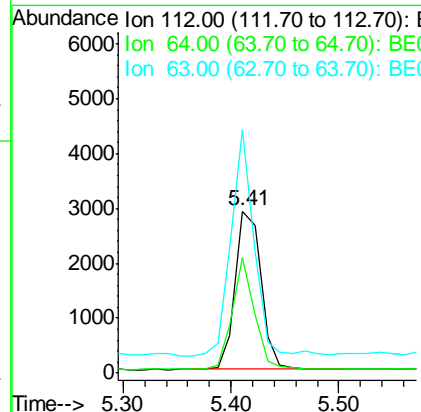
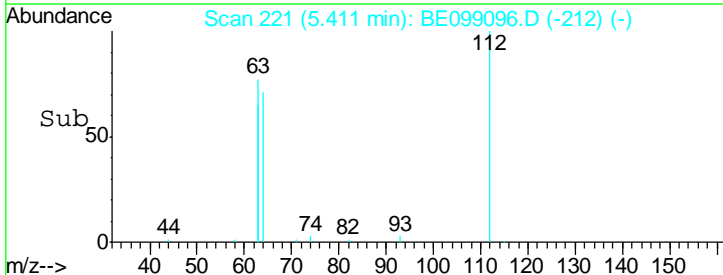
Manual Integrations
APPROVED
 Sohil
 3/25/2019 12:12:15 PM

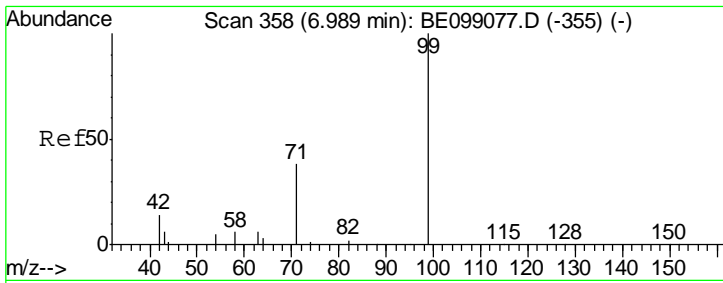


#4
 2-Fluorophenol
 Concen: 0.413 ng
 RT: 5.41 min Scan# 221
 Delta R.T. -0.00 min
 Lab File: BE099096.D
 Acq: 23 Mar 2019 1:10



Tgt Ion	Resp	Lower	Upper
112	4769		
112	100		
64	61.3	57.9	86.9
63	128.3	158.3	237.5#





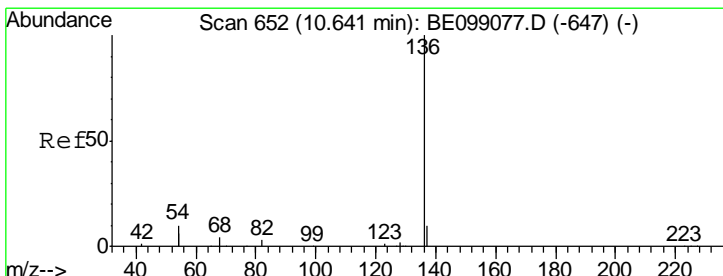
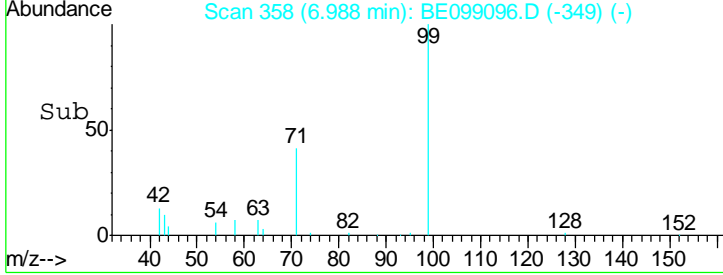
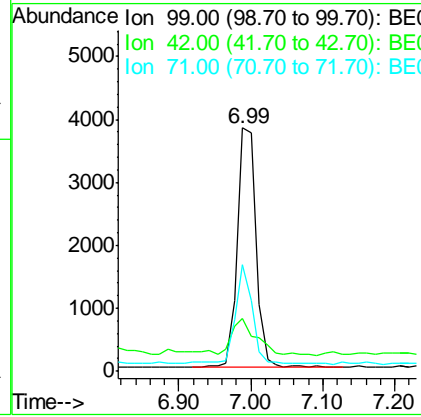
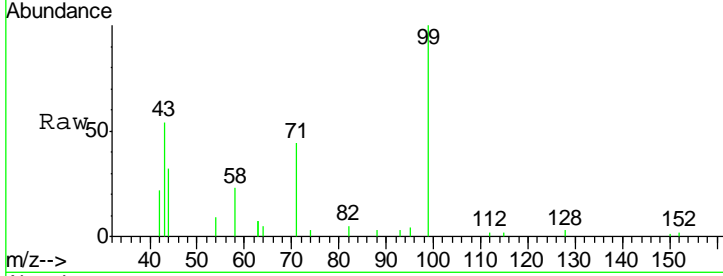
#5
 Phenol-d6
 Concen: 0.417 ng
 RT: 6.99 min Scan# 358
 Delta R.T. -0.00 min
 Lab File: BE099096.D
 Acq: 23 Mar 2019 1:10

Instrument :
 BNA_E
ClientSampled :
 PST-025-B130-031319

Tgt Ion	Resp	Lower	Upper
99	6929		
99	100		
42	19.5	24.2	36.2#
71	36.6	35.7	53.5

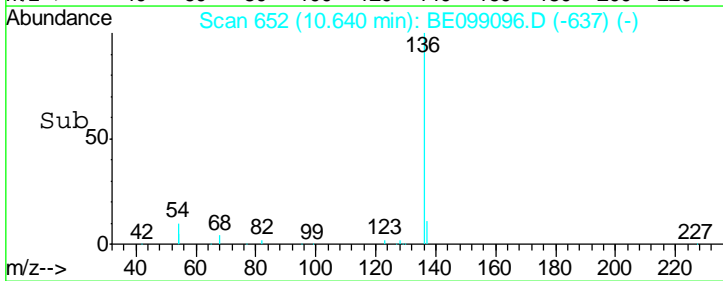
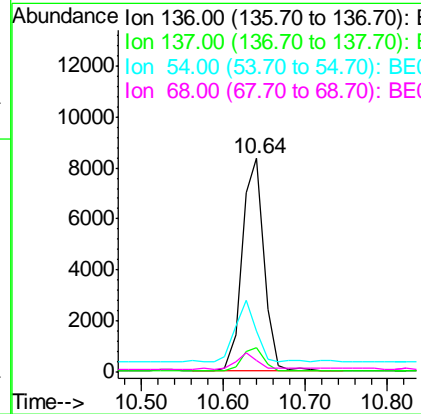
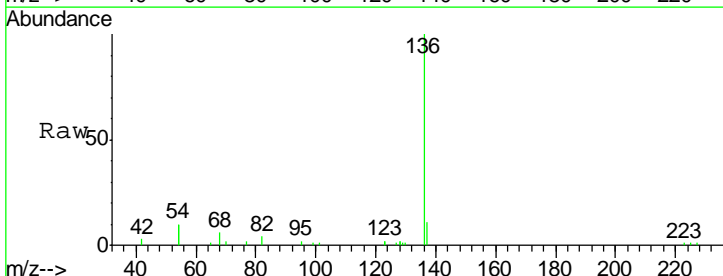
Manual Integrations
APPROVED

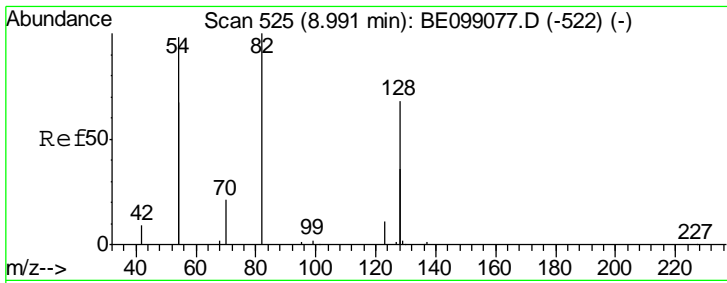
Sohil
 3/25/2019 12:12:15 PM



#7
 Naphthalene-d8
 Concen: 0.400 ng
 RT: 10.64 min Scan# 652
 Delta R.T. -0.00 min
 Lab File: BE099096.D
 Acq: 23 Mar 2019 1:10

Tgt Ion	Resp	Lower	Upper
136	15273		
136	100		
137	11.3	11.4	17.0#
54	19.3	39.3	58.9#
68	5.7	6.7	10.1#





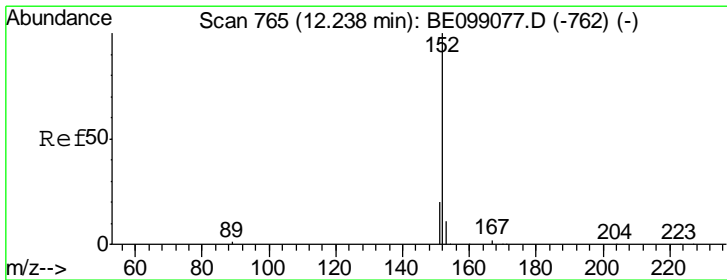
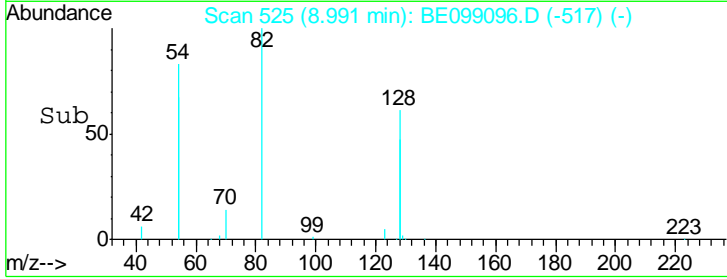
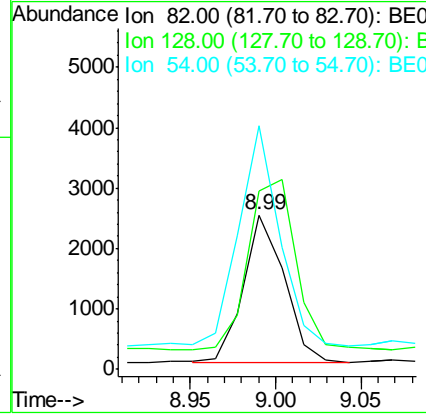
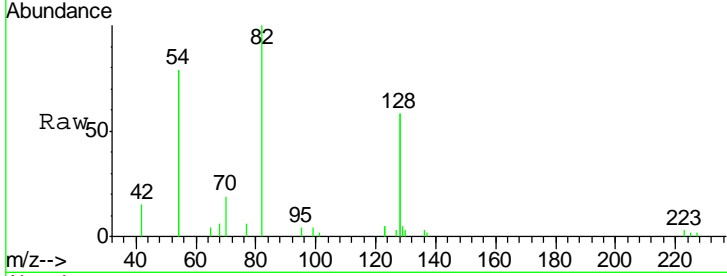
#8
 Nitrobenzene-d5
 Concen: 0.613 ng m
 RT: 8.99 min Scan# 525
 Delta R.T. -0.00 min
 Lab File: BE099096.D
 Acq: 23 Mar 2019 1:10

Instrument :
 BNA_E
ClientSampled :
 PST-025-B130-031319

Tgt Ion	Resp	Lower	Upper
82	4093		
82	100		
128	57.9	123.8	185.8#
54	79.1	203.4	305.2#

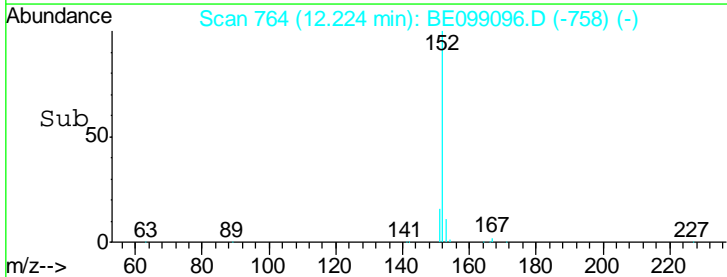
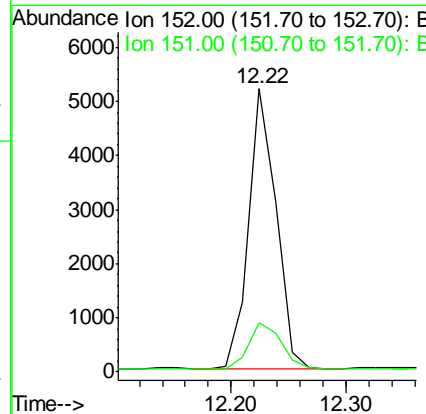
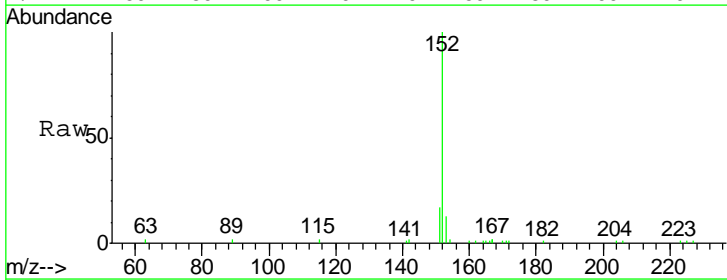
Manual Integrations
APPROVED

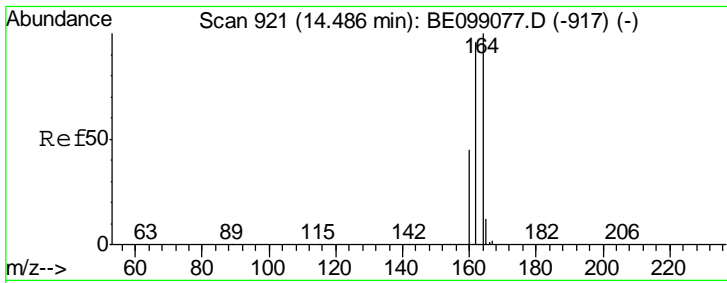
Sohil
 3/25/2019 12:12:15 PM



#11
 2-Methylnaphthalene-d10
 Concen: 0.308 ng
 RT: 12.22 min Scan# 764
 Delta R.T. -0.01 min
 Lab File: BE099096.D
 Acq: 23 Mar 2019 1:10

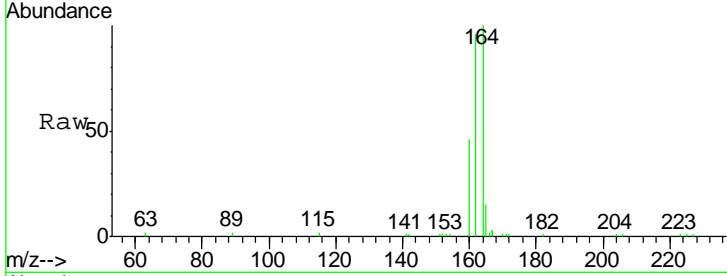
Tgt Ion	Resp	Lower	Upper
152	8486		
152	100		
151	19.9	16.5	24.7





#13
 Acenaphthene-d10
 Concen: 0.400 ng
 RT: 14.49 min Scan# 921
 Delta R.T. 0.00 min
 Lab File: BE099096.D
 Acq: 23 Mar 2019 1:10

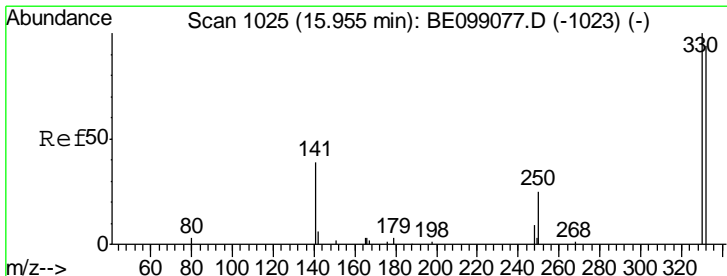
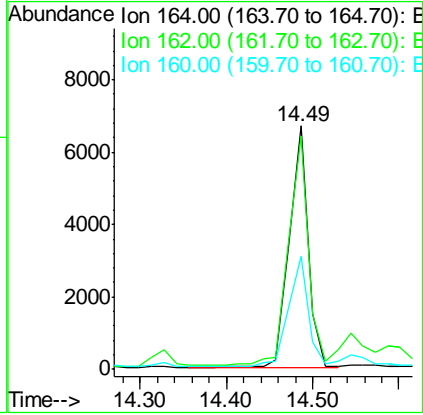
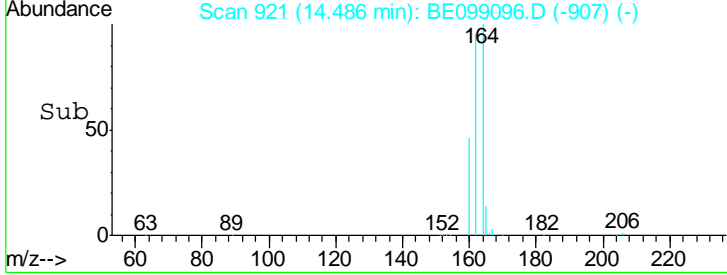
Instrument :
 BNA_E
 ClientSampled :
 PST-025-B130-031319



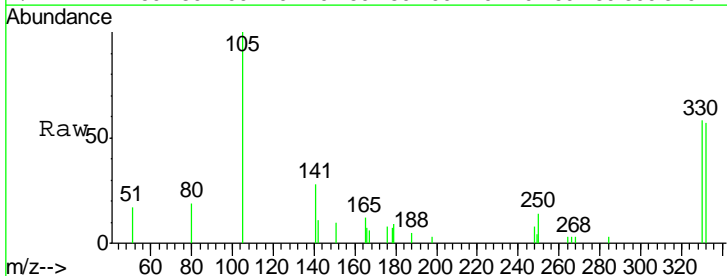
Tgt Ion:164 Resp: 10099

Ion	Ratio	Lower	Upper
164	100		
162	95.9	80.2	120.2
160	46.4	37.8	56.8

Manual Integrations
 APPROVED
 Sohil
 3/25/2019 12:12:15 PM

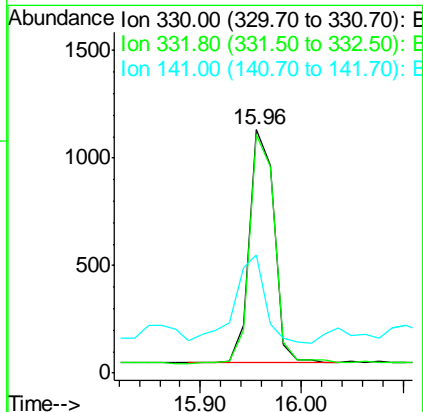
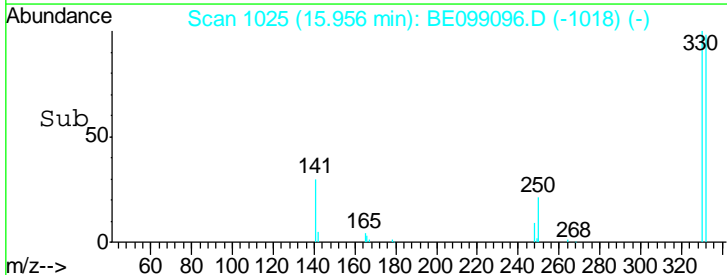


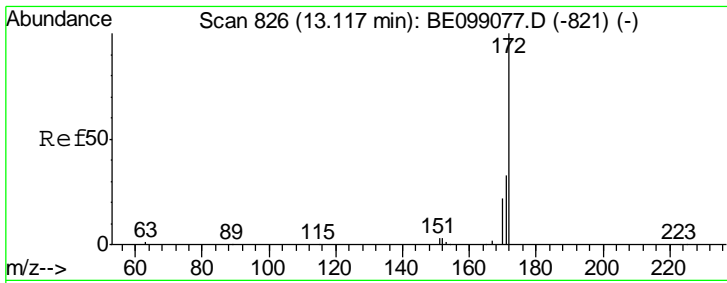
#14
 2,4,6-Tribromophenol
 Concen: 0.626 ng
 RT: 15.96 min Scan# 1025
 Delta R.T. 0.00 min
 Lab File: BE099096.D
 Acq: 23 Mar 2019 1:10



Tgt Ion:330 Resp: 1859

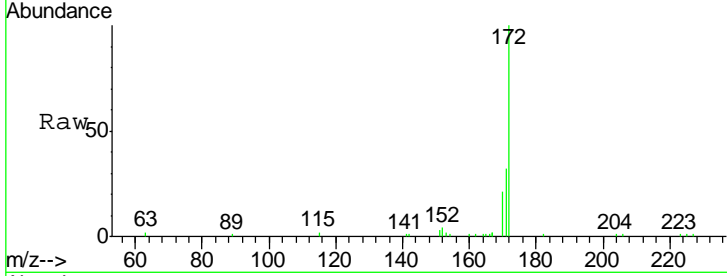
Ion	Ratio	Lower	Upper
330	100		
332	99.2	77.6	116.4
141	47.3	31.0	46.4#





#15
 2-Fluorobiphenyl
 Concen: 0.318 ng
 RT: 13.12 min Scan# 826
 Delta R.T. 0.00 min
 Lab File: BE099096.D
 Acq: 23 Mar 2019 1:10

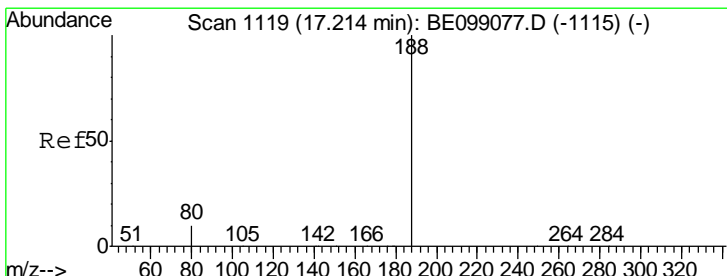
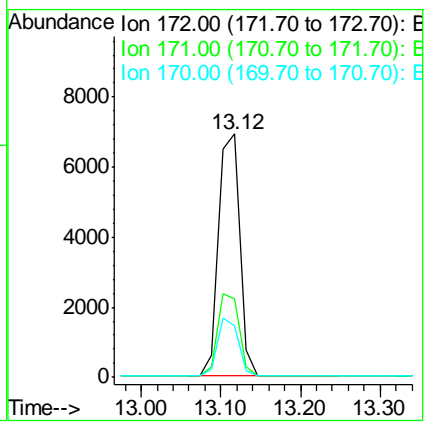
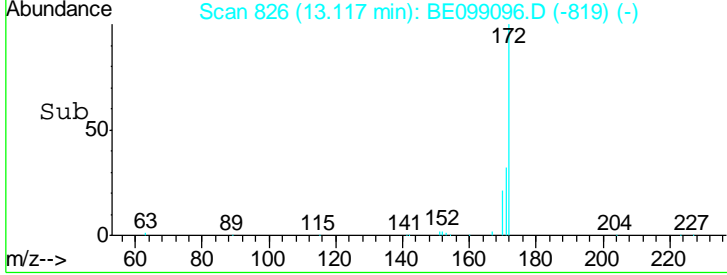
Instrument :
 BNA_E
ClientSampled :
 PST-025-B130-031319



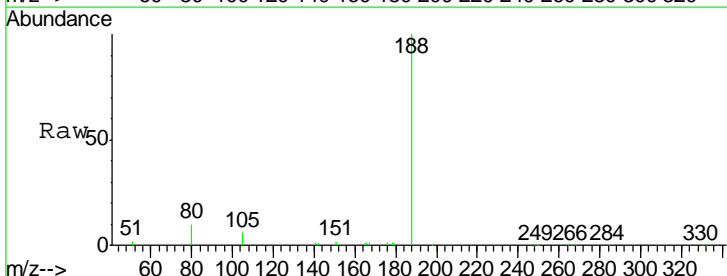
Tgt Ion: 172 Resp: 12770

Ion	Ratio	Lower	Upper
172	100		
171	32.4	28.0	42.0
170	21.4	17.7	26.5

Manual Integrations
APPROVED
 Sohil
 3/25/2019 12:12:15 PM

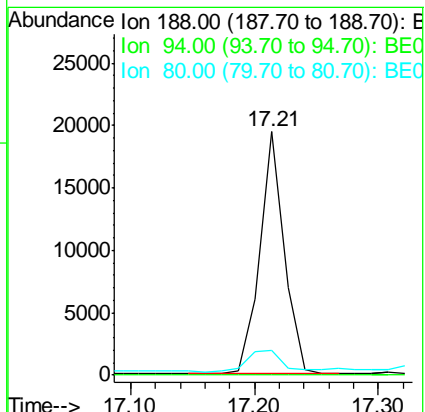
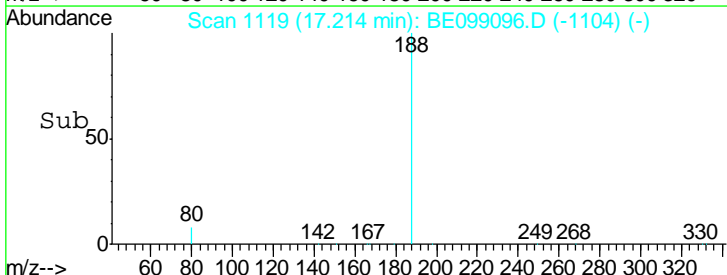


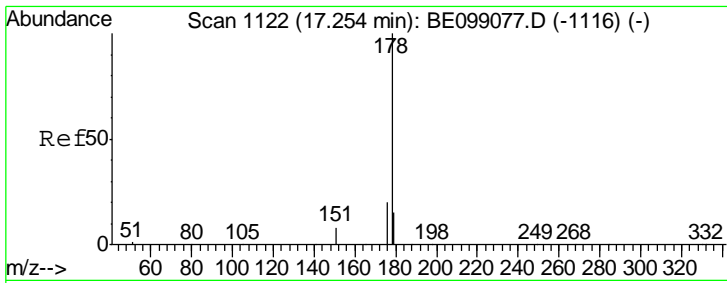
#19
 Phenanthrene-d10
 Concen: 0.400 ng
 RT: 17.21 min Scan# 1119
 Delta R.T. 0.00 min
 Lab File: BE099096.D
 Acq: 23 Mar 2019 1:10



Tgt Ion: 188 Resp: 26464

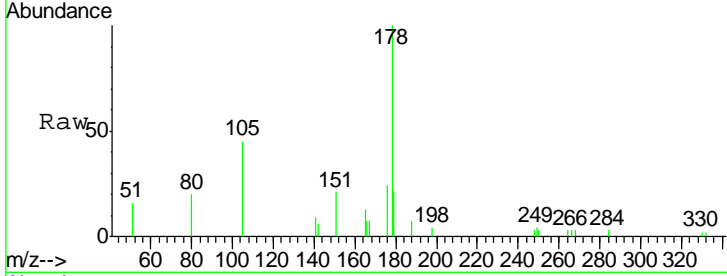
Ion	Ratio	Lower	Upper
188	100		
94	0.0	0.0	0.0
80	10.4	6.3	9.5#





#23
 Phenanthrene
 Concen: 0.045 ng
 RT: 17.25 min Scan# 1122
 Delta R.T. 0.00 min
 Lab File: BE099096.D
 Acq: 23 Mar 2019 1:10

Instrument : BNA_E
 Client Sampled : PST-025-B130-031319

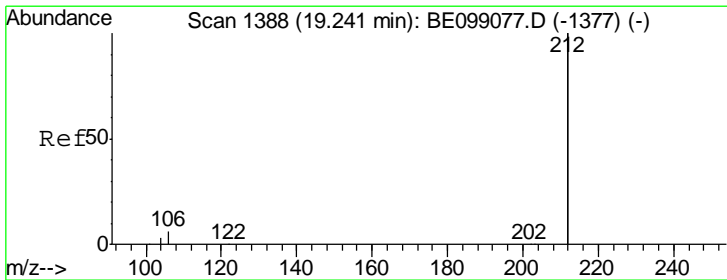
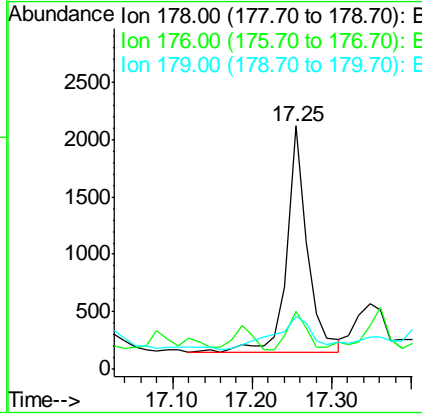
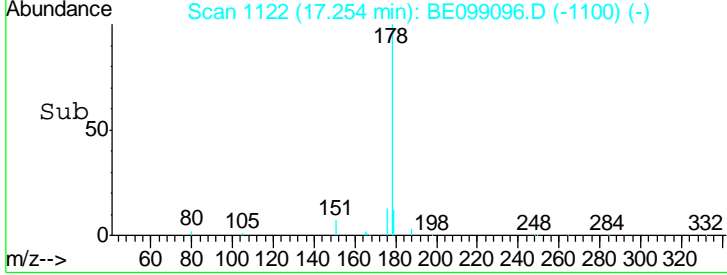


Tgt Ion: 178 Resp: 3541

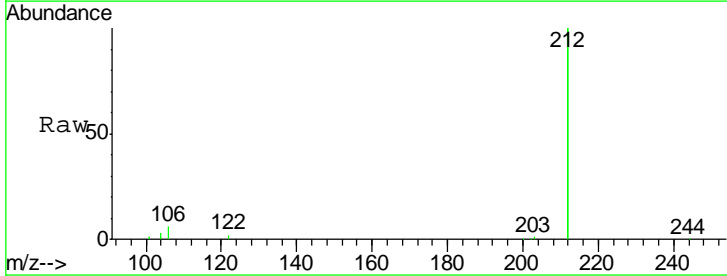
Ion	Ratio	Lower	Upper
178	100		
176	15.5	16.0	24.0#
179	27.2	12.1	18.1#

Manual Integrations
 APPROVED

Sohil
 3/25/2019 12:12:15 PM

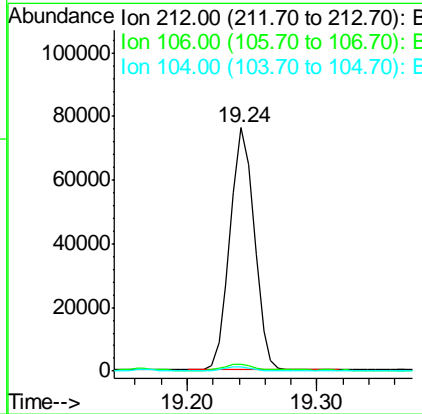
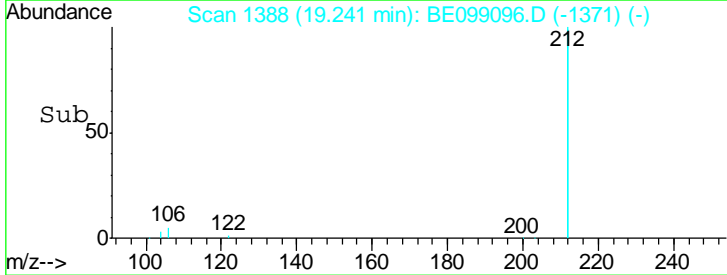


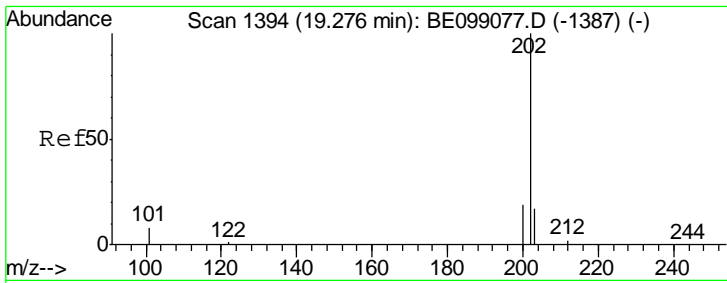
#25
 Fluoranthene-d10
 Concen: 0.280 ng
 RT: 19.24 min Scan# 1388
 Delta R.T. 0.00 min
 Lab File: BE099096.D
 Acq: 23 Mar 2019 1:10



Tgt Ion: 212 Resp: 98948

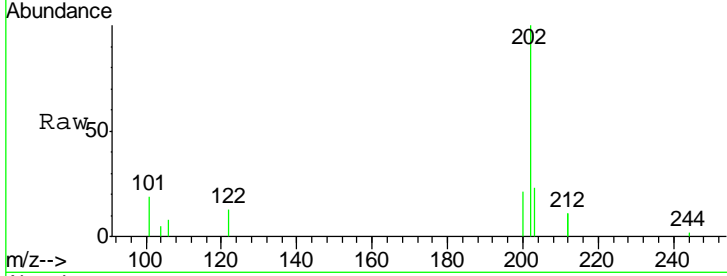
Ion	Ratio	Lower	Upper
212	100		
106	2.9	1.8	2.8#
104	1.7	1.0	1.6#





#26
 Fluoranthene
 Concen: 0.056 ng
 RT: 19.27 min Scan# 1393
 Delta R.T. -0.01 min
 Lab File: BE099096.D
 Acq: 23 Mar 2019 1:10

Instrument :
 BNA_E
ClientSampled :
 PST-025-B130-031319

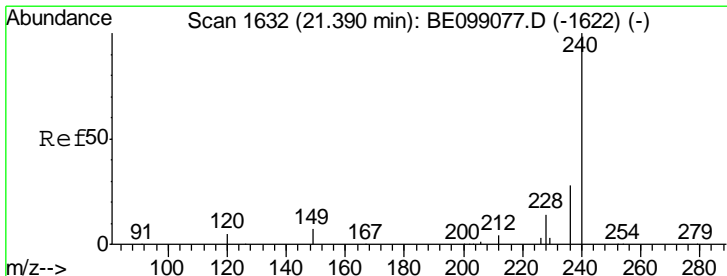
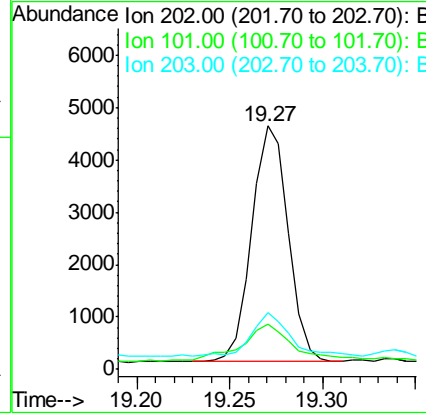
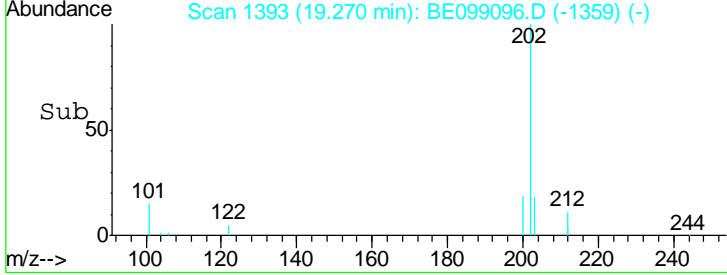


Tgt Ion: 202 Resp: 6149

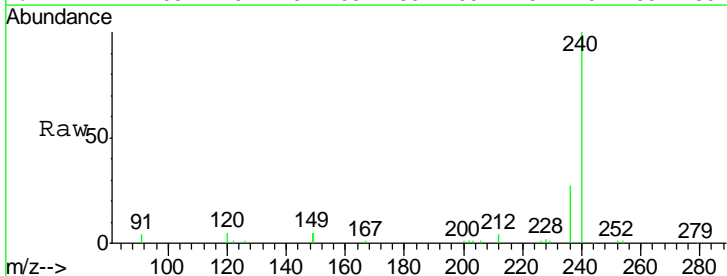
Ion	Ratio	Lower	Upper
202	100		
101	22.4	7.3	10.9#
203	20.7	13.4	20.2#

Manual Integrations
APPROVED

Sohil
 3/25/2019 12:12:15 PM

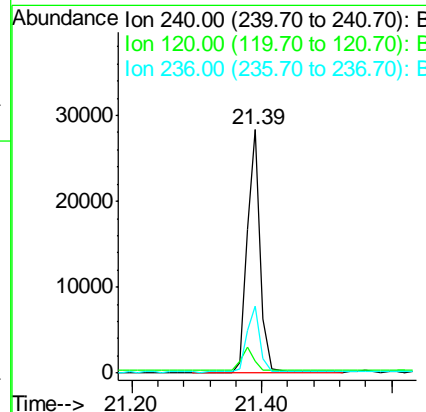
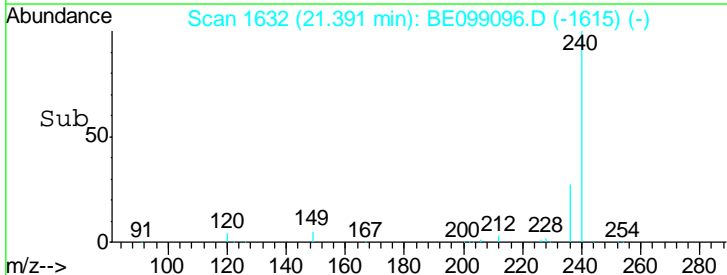


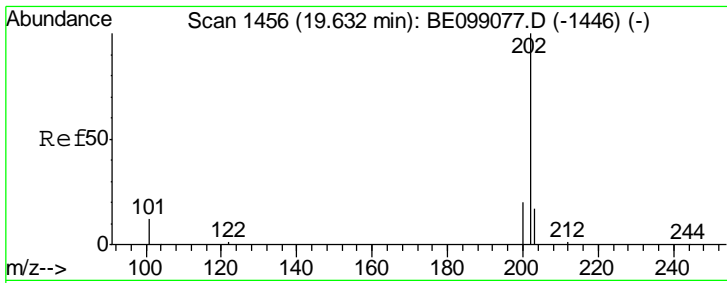
#27
 Chrysene-d12
 Concen: 0.400 ng
 RT: 21.39 min Scan# 1632
 Delta R.T. 0.00 min
 Lab File: BE099096.D
 Acq: 23 Mar 2019 1:10



Tgt Ion: 240 Resp: 38888

Ion	Ratio	Lower	Upper
240	100		
120	4.9	5.0	7.4#
236	27.3	22.7	34.1





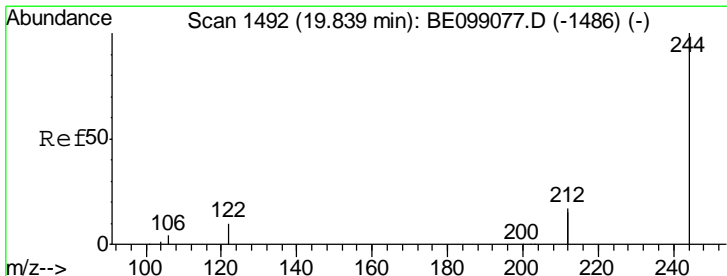
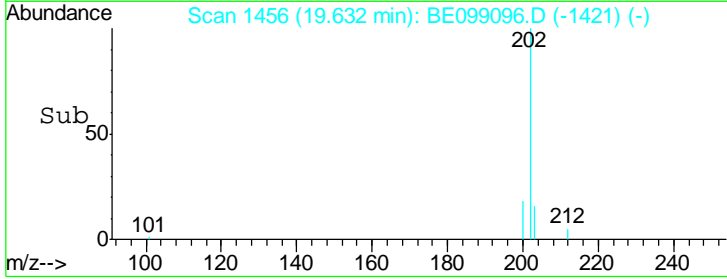
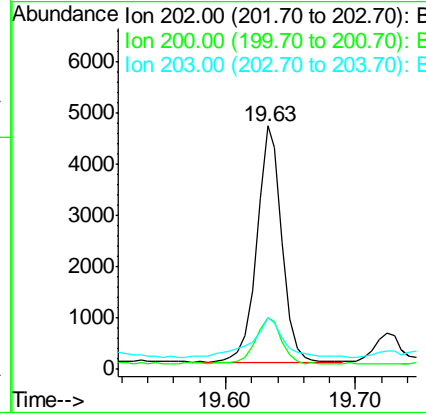
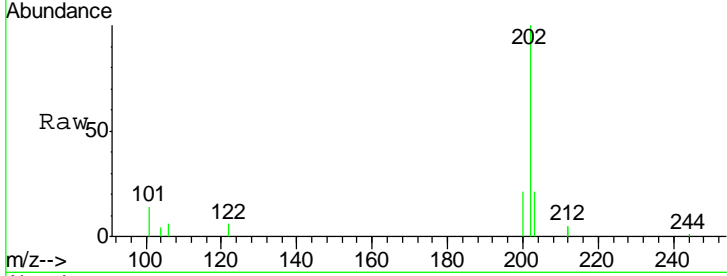
#28
 Pyrene
 Concen: 0.047 ng
 RT: 19.63 min Scan# 1456
 Delta R.T. 0.00 min
 Lab File: BE099096.D
 Acq: 23 Mar 2019 1:10

Instrument :
 BNA_E
ClientSampled :
 PST-025-B130-031319

Tgt Ion	Resp	Lower	Upper
202	100		
200	20.4	17.0	25.6
203	22.1	14.2	21.2#

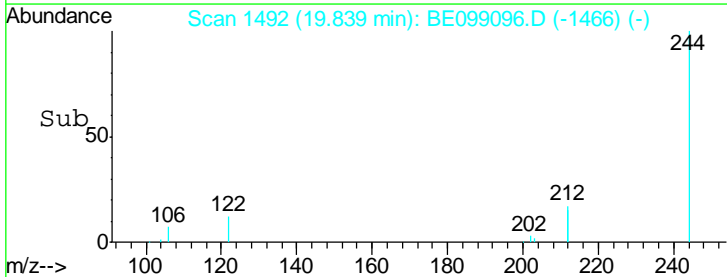
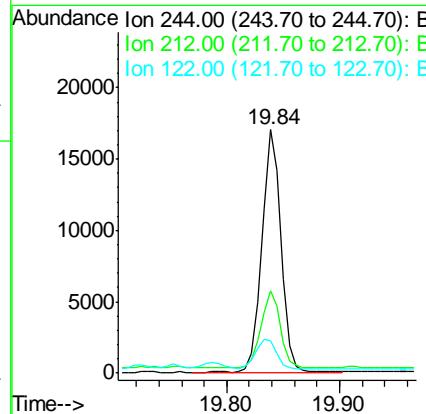
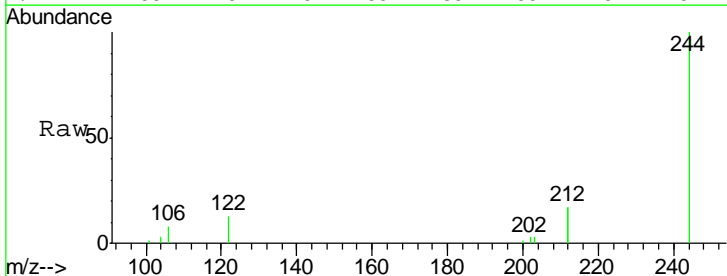
Manual Integrations
APPROVED

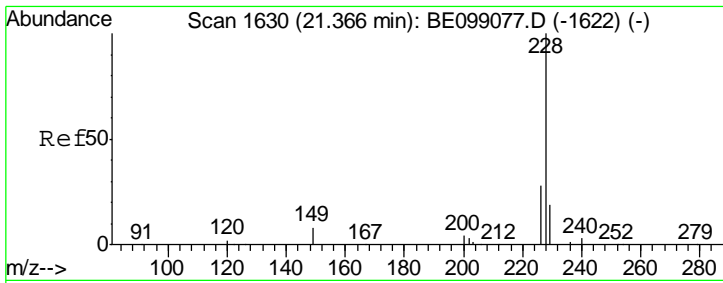
Sohil
 3/25/2019 12:12:15 PM



#29
 Terphenyl-d14
 Concen: 0.243 ng
 RT: 19.84 min Scan# 1492
 Delta R.T. 0.00 min
 Lab File: BE099096.D
 Acq: 23 Mar 2019 1:10

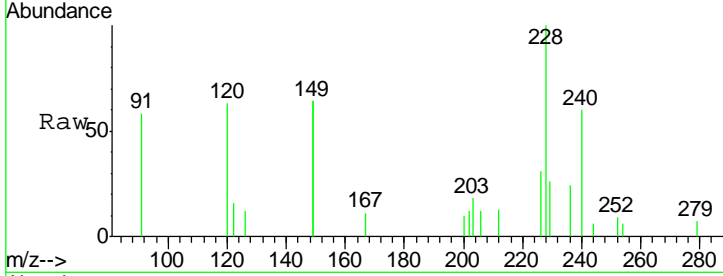
Tgt Ion	Resp	Lower	Upper
244	100		
212	34.0	29.4	44.2
122	13.1	7.1	10.7#





#30
 Benzo(a)anthracene
 Concen: 0.023 ng
 RT: 21.37 min Scan# 1630
 Delta R.T. 0.00 min
 Lab File: BE099096.D
 Acq: 23 Mar 2019 1:10

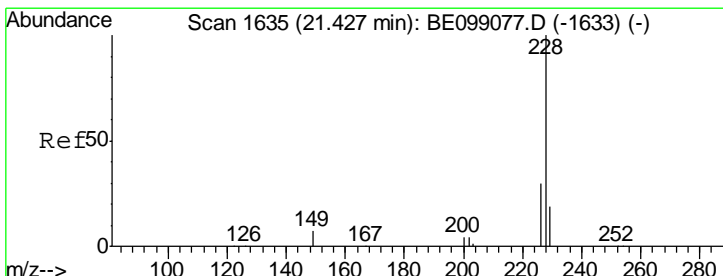
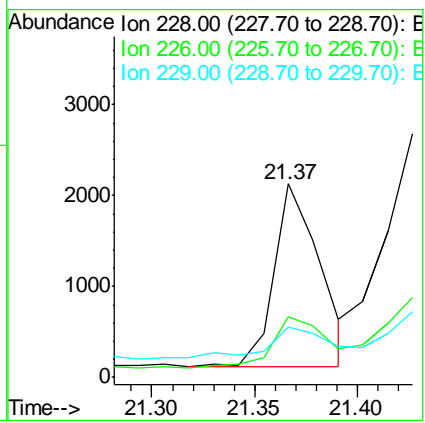
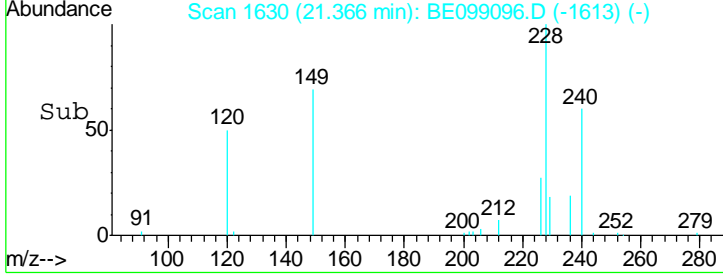
Instrument : BNA_E
 ClientSampled : PST-025-B130-031319



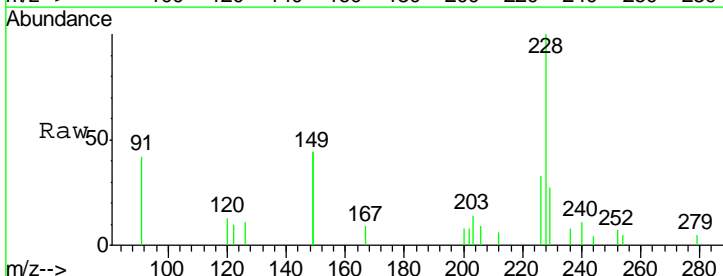
Tgt Ion: 228 Resp: 3162

Ion	Ratio	Lower	Upper
228	100		
226	31.1	23.0	34.4
229	26.1	16.5	24.7#

Manual Integrations
 APPROVED
 Sohil
 3/25/2019 12:12:15 PM

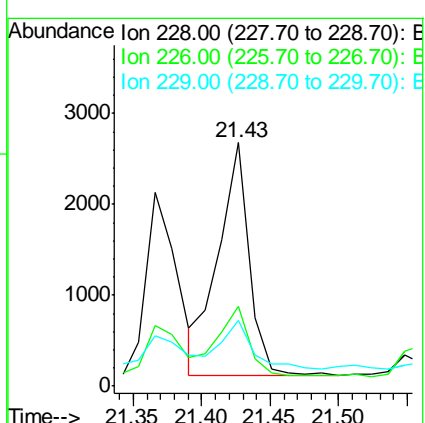
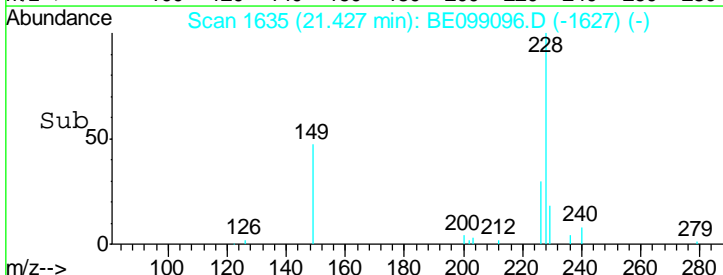


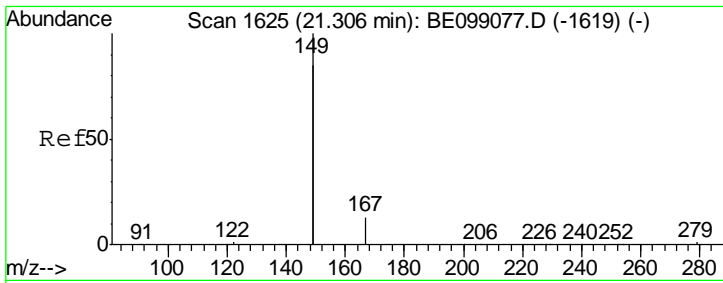
#31
 Chrysene
 Concen: 0.029 ng
 RT: 21.43 min Scan# 1635
 Delta R.T. 0.00 min
 Lab File: BE099096.D
 Acq: 23 Mar 2019 1:10



Tgt Ion: 228 Resp: 3989

Ion	Ratio	Lower	Upper
228	100		
226	32.8	23.7	35.5
229	27.0	16.1	24.1#





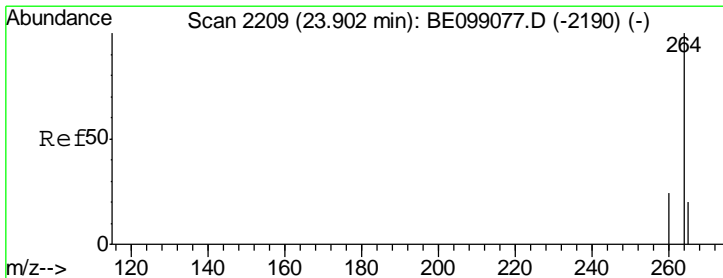
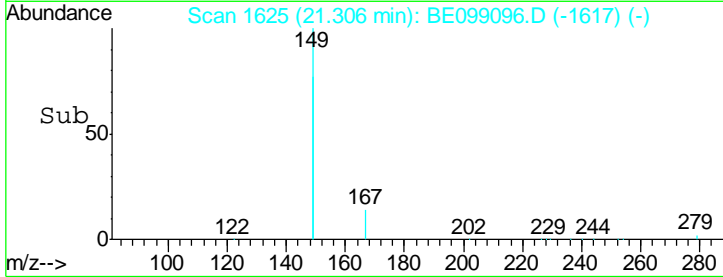
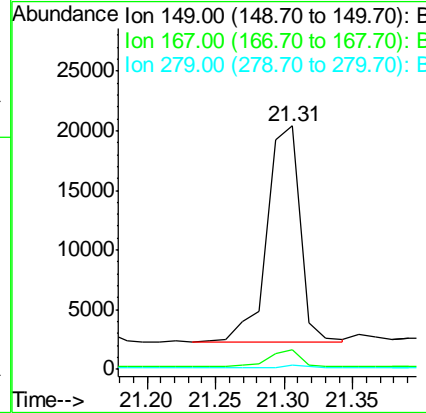
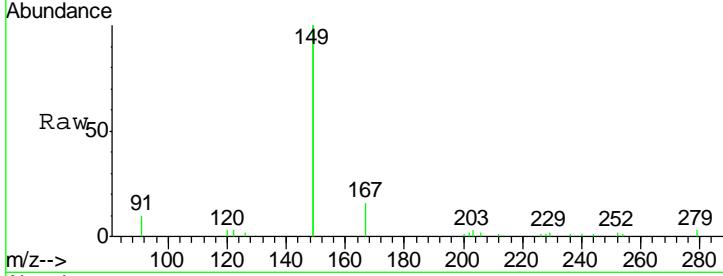
#32
 Bis(2-ethylhexyl)phthalate
 Concen: 0.170 ng
 RT: 21.31 min Scan# 1625
 Delta R.T. 0.00 min
 Lab File: BE099096.D
 Acq: 23 Mar 2019 1:10

Instrument :
 BNA_E
 ClientSampled :
 PST-025-B130-031319

Tgt Ion	Resp	Lower	Upper
149	100		
167	7.3	5.4	8.0
279	1.0	1.0	1.4

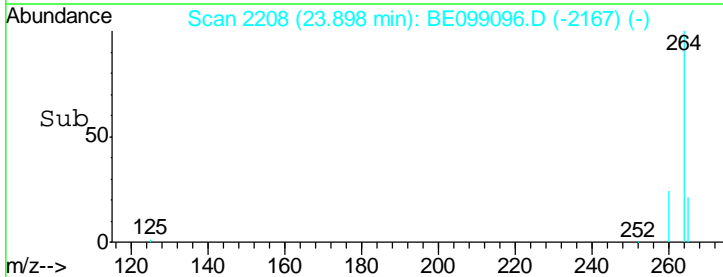
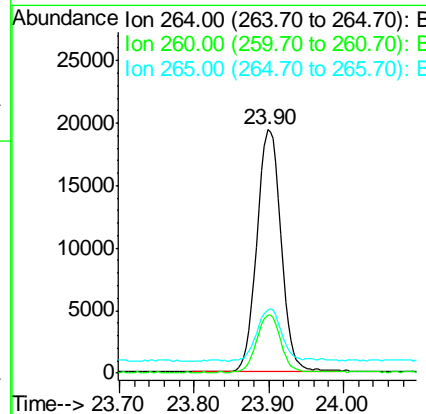
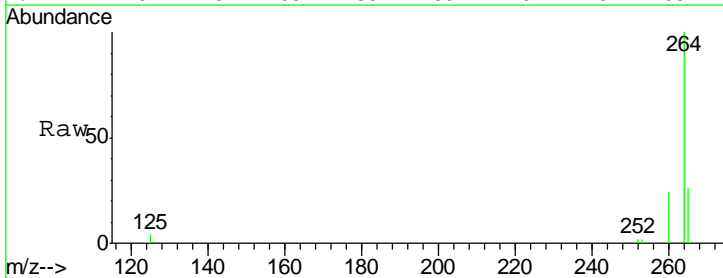
Manual Integrations
 APPROVED

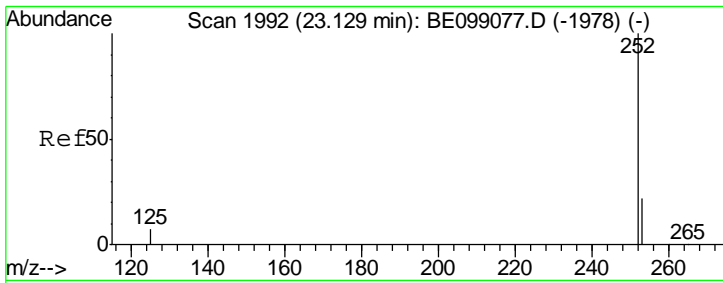
Sohil
 3/25/2019 12:12:15 PM



#34
 Perylene-d12
 Concen: 0.400 ng
 RT: 23.90 min Scan# 2208
 Delta R.T. -0.00 min
 Lab File: BE099096.D
 Acq: 23 Mar 2019 1:10

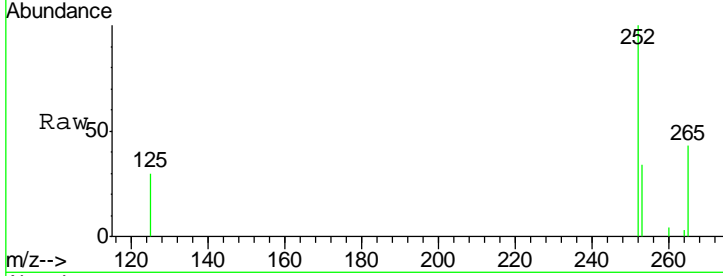
Tgt Ion	Resp	Lower	Upper
264	100		
260	23.9	21.2	31.8
265	25.7	24.6	36.8





#35
 Benzo(b)fluoranthene
 Concen: 0.033 ng
 RT: 23.12 min Scan# 1991
 Delta R.T. -0.00 min
 Lab File: BE099096.D
 Acq: 23 Mar 2019 1:10

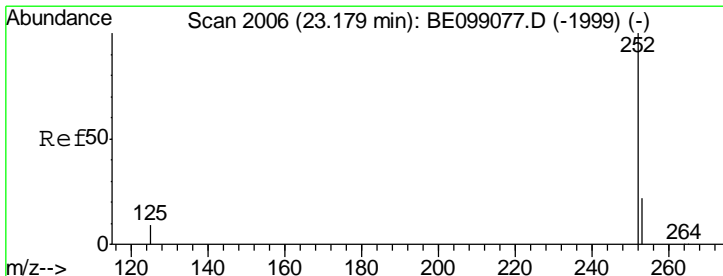
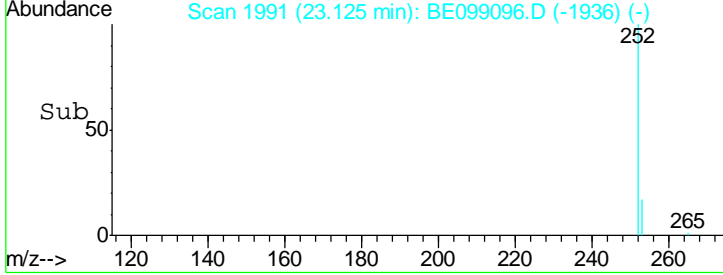
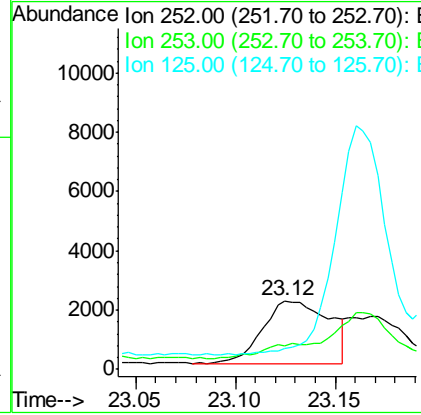
Instrument : BNA_E
 ClientSampled : PST-025-B130-031319



Tgt Ion	Ion	Ratio	Lower	Upper
252	100			
253	34.1	18.2	27.2#	
125	30.2	7.3	10.9#	

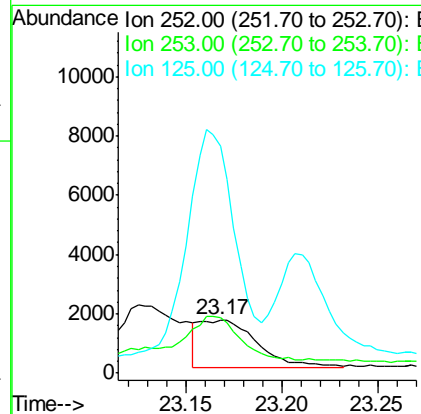
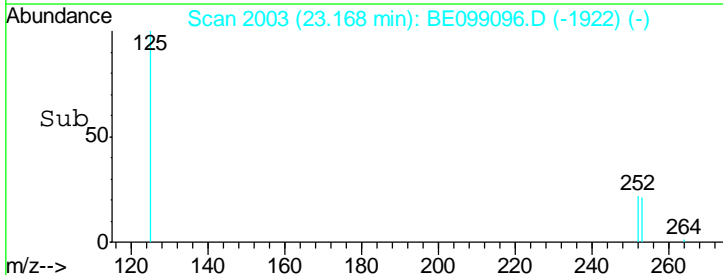
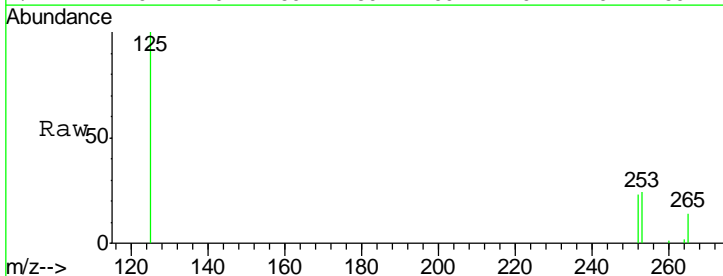
Manual Integrations
 APPROVED

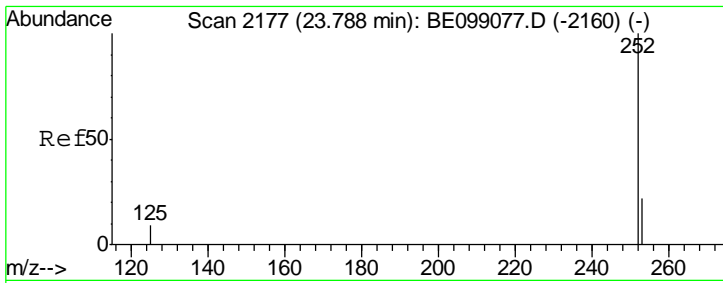
Sohil
 3/25/2019 12:12:15 PM



#36
 Benzo(k)fluoranthene
 Concen: 0.023 ng m
 RT: 23.17 min Scan# 2003
 Delta R.T. -0.01 min
 Lab File: BE099096.D
 Acq: 23 Mar 2019 1:10

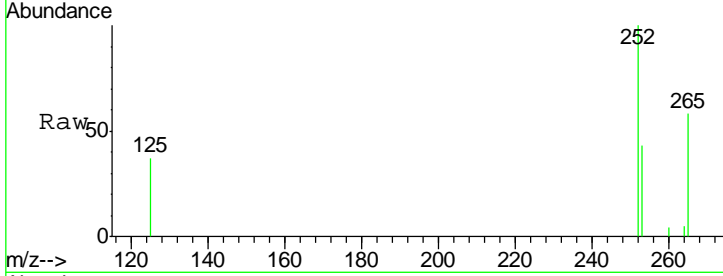
Tgt Ion	Ion	Ratio	Lower	Upper
252	100			
253	104.6	19.3	28.9#	
125	427.8	7.5	11.3#	





#37
 Benzo(a)pyrene
 Concen: 0.023 ng
 RT: 23.79 min Scan# 2177
 Delta R.T. -0.00 min
 Lab File: BE099096.D
 Acq: 23 Mar 2019 1:10

Instrument :
 BNA_E
ClientSampled :
 PST-025-B130-031319



Tgt Ion: 252 Resp: 3210

Ion	Ratio	Lower	Upper
252	100		
253	43.3	19.9	29.9#
125	36.6	9.0	13.4#

Manual Integrations
APPROVED
 Sohil
 3/25/2019 12:12:15 PM

