

Data Path : Z:\svoasrv\HPCHEM1\BNA_E\Data\BE040221\
 Data File : BE101189.D
 Acq On : 2 Apr 2021 8:36
 Operator : CG/JU
 Sample : SSTDCCC0.4
 Misc :
 ALS Vial : 2 Sample Multiplier: 1

Instrument :
 BNA_E
 ClientSampleId :
 SSTDCCC0.4

Quant Time: Apr 02 10:05:10 2021
 Quant Method : Z:\svoasrv\HPCHEM1\BNA_E\Methods\8270-SIM-BE032421.M
 Quant Title : ASP BNA STANDARDS FOR 5 POINT CALIBRATION
 QLast Update : Fri Apr 02 10:03:59 2021
 Response via : Initial Calibration

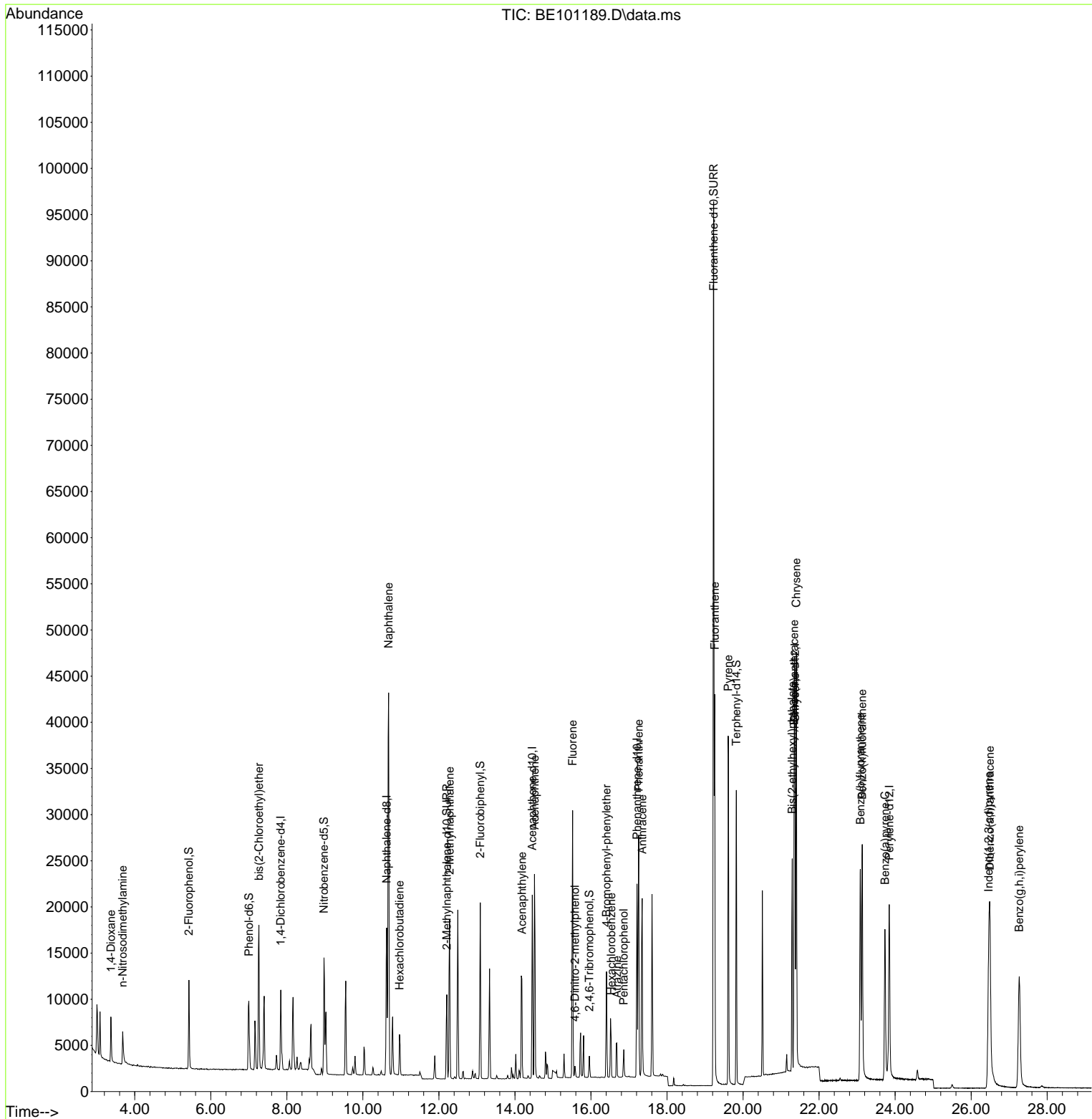
Compound	R.T.	QIon	Response	Conc	Units	Dev(Min)	
Internal Standards							
1) 1,4-Dichlorobenzene-d4	7.841	152	3899	0.40	ng	0.00	
7) Naphthalene-d8	10.627	136	17088	0.40	ng	# 0.00	
13) Acenaphthene-d10	14.456	164	11161	0.40	ng	0.00	
19) Phenanthrene-d10	17.211	188	26840	0.40	ng	# 0.00	
29) Chrysene-d12	21.367	240	29176	0.40	ng	0.00	
36) Perylene-d12	23.848	264	28890	0.40	ng	0.00	
System Monitoring Compounds							
4) 2-Fluorophenol	5.423	112	4639	0.50	ng	0.00	
5) Phenol-d6	7.001	99	6986	0.49	ng	0.00	
8) Nitrobenzene-d5	8.977	82	4848	0.48	ng	0.00	
11) 2-Methylnaphthalene-d10	12.209	152	11602	0.42	ng	0.00	
14) 2,4,6-Tribromophenol	15.956	330	1242	0.62	ng	0.00	
15) 2-Fluorobiphenyl	13.088	172	16197	0.39	ng	0.00	
27) Fluoranthene-d10	19.226	212	131724	0.39	ng	0.00	
31) Terphenyl-d14	19.824	244	28656	0.43	ng	0.00	
							Qvalue
2) 1,4-Dioxane	3.373	88	2968	0.47	ng		99
3) n-Nitrosodimethylamine	3.684	42	2776	0.42	ng	#	95
6) bis(2-Chloroethyl)ether	7.266	93	5308	0.44	ng		98
9) Naphthalene	10.679	128	72521	0.42	ng		99
10) Hexachlorobutadiene	10.965	225	3070	0.39	ng		99
12) 2-Methylnaphthalene	12.281	142	12477	0.42	ng		97
16) Acenaphthylene	14.183	152	15791	0.37	ng		99
17) Acenaphthene	14.514	154	12594	0.41	ng		96
18) Fluorene	15.518	166	16153	0.40	ng		98
20) 4,6-Dinitro-2-methylph...	15.578	198	929	0.68	ng	#	63
21) 4-Bromophenyl-phenylether	16.410	248	5140	0.43	ng	#	91
22) Hexachlorobenzene	16.531	284	5353	0.41	ng		99
23) Atrazine	16.682	200	3893	0.52	ng	#	89
24) Pentachlorophenol	16.864	266	1662	0.48	ng		97
25) Phenanthrene	17.257	178	30594	0.41	ng		100
26) Anthracene	17.347	178	24495	0.38	ng		99
28) Fluoranthene	19.255	202	36198	0.38	ng		99
30) Pyrene	19.611	202	36463	0.42	ng		99
32) Benzo(a)anthracene	21.343	228	33913	0.45	ng		100
33) Chrysene	21.403	228	38282	0.43	ng		99
34) Bis(2-ethylhexyl)phtha...	21.294	149	28278	0.57	ng		99
35) Indeno(1,2,3-cd)pyrene	26.462	276	34279	0.58	ng		99
37) Benzo(b)fluoranthene	23.085	252	33420	0.44	ng		99
38) Benzo(k)fluoranthene	23.135	252	37627	0.39	ng		98
39) Benzo(a)pyrene	23.734	252	28111	0.40	ng		99
40) Dibenzo(a,h)anthracene	26.495	278	29100	0.50	ng		98
41) Benzo(g,h,i)perylene	27.265	276	32148	0.44	ng		99

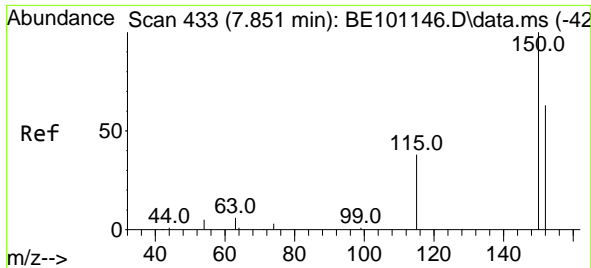
(#) = qualifier out of range (m) = manual integration (+) = signals summed

Data Path : Z:\svoasrv\HPCHEM1\BNA_E\Data\BE040221\
 Data File : BE101189.D
 Acq On : 2 Apr 2021 8:36
 Operator : CG/JU
 Sample : SSTDCCC0.4
 Misc :
 ALS Vial : 2 Sample Multiplier: 1

Instrument :
 BNA_E
 ClientSampled :
 SSTDCCC0.4

Quant Time: Apr 02 10:05:10 2021
 Quant Method : Z:\svoasrv\HPCHEM1\BNA_E\Methods\8270-SIM-BE032421.M
 Quant Title : ASP BNA STANDARDS FOR 5 POINT CALIBRATION
 QLast Update : Fri Apr 02 10:03:59 2021
 Response via : Initial Calibration

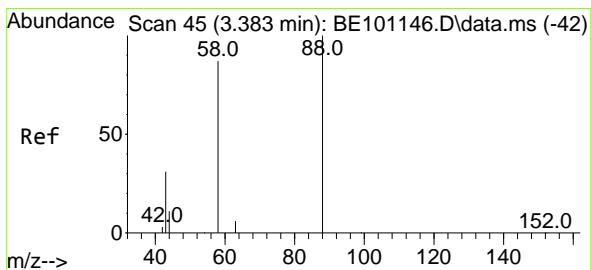
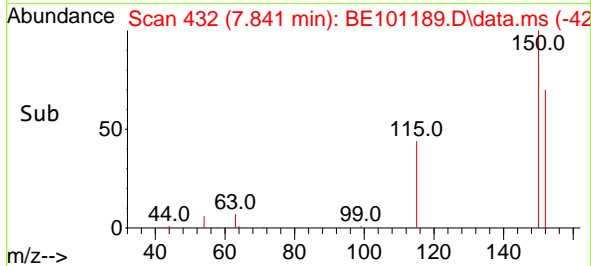
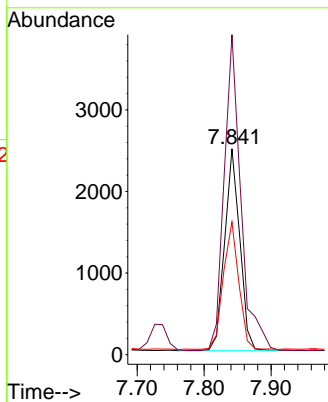
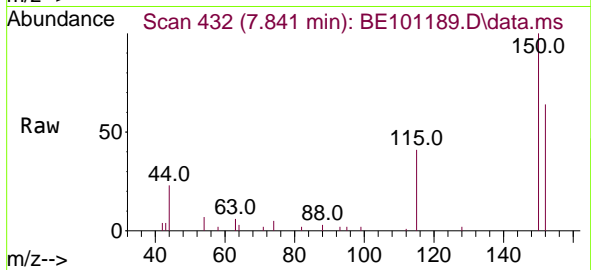




#1
 1,4-Dichlorobenzene-d4
 Concen: 0.40 ng
 RT: 7.841 min Scan# 432
 Delta R.T. 0.000 min
 Lab File: BE101189.D
 Acq: 2 Apr 2021 8:36

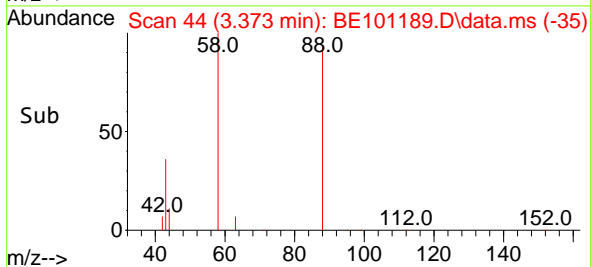
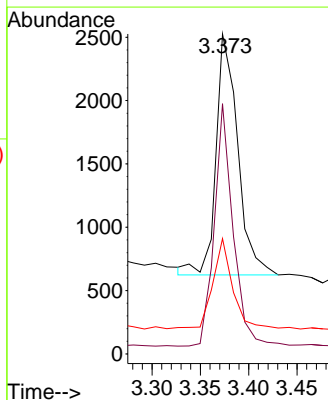
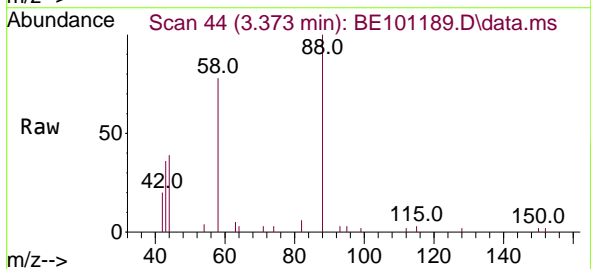
Instrument :
 BNA_E
 ClientSampled :
 SSTDCCC0.4

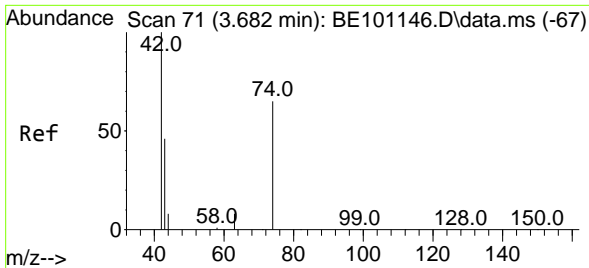
Tgt Ion:152 Resp: 3899
 Ion Ratio Lower Upper
 152 100
 150 155.4 126.3 189.5
 115 64.5 48.9 73.3



#2
 1,4-Dioxane
 Concen: 0.47 ng
 RT: 3.373 min Scan# 44
 Delta R.T. 0.000 min
 Lab File: BE101189.D
 Acq: 2 Apr 2021 8:36

Tgt Ion: 88 Resp: 2968
 Ion Ratio Lower Upper
 88 100
 58 86.5 68.5 102.7
 43 33.6 27.2 40.8

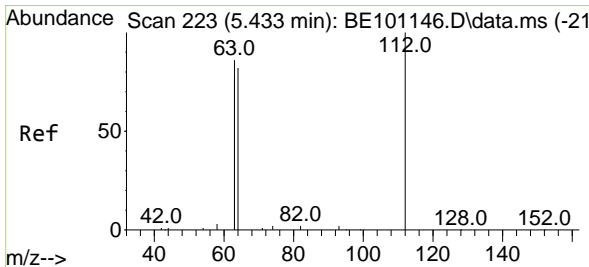
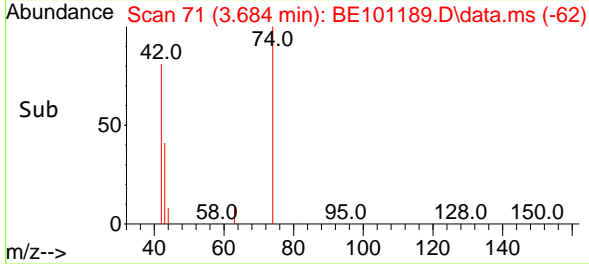
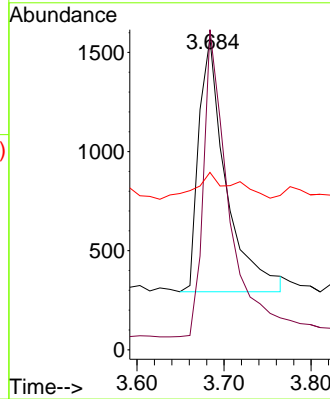
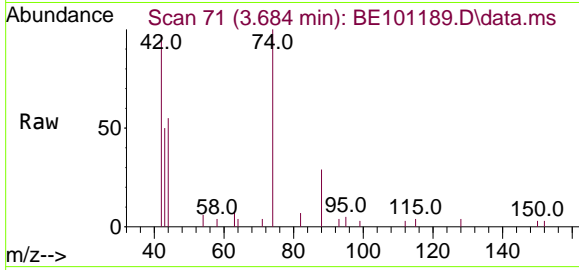




#3
 n-Nitrosodimethylamine
 Concen: 0.42 ng
 RT: 3.684 min Scan# 71
 Delta R.T. 0.000 min
 Lab File: BE101189.D
 Acq: 2 Apr 2021 8:36

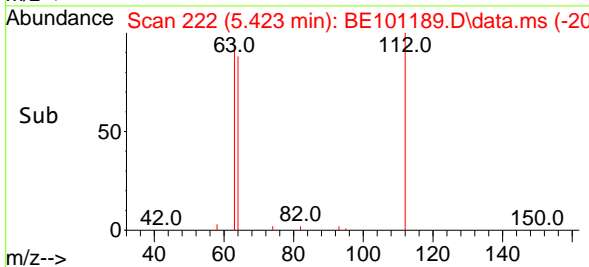
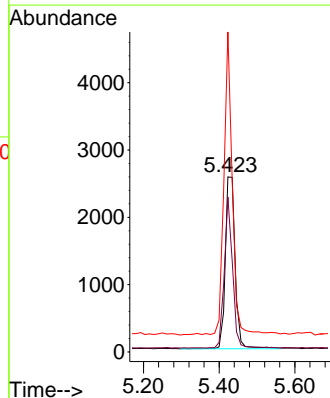
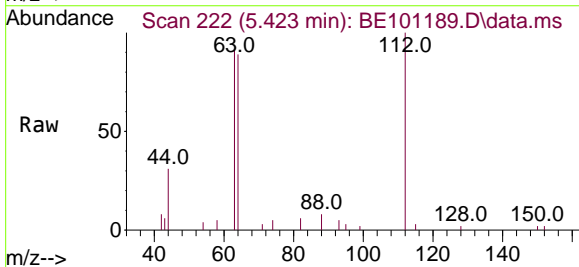
Instrument :
 BNA_E
 ClientSampleId :
 SSTDCCC0.4

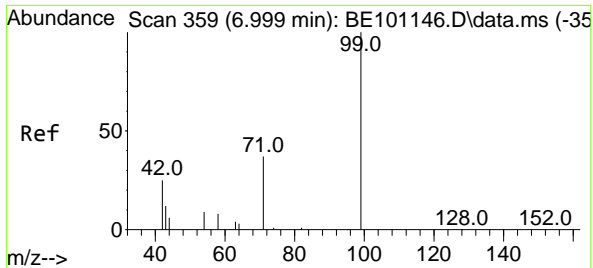
Tgt Ion: 42 Resp: 2776
 Ion Ratio Lower Upper
 42 100
 74 113.0 87.0 130.6
 44 15.2 8.3 12.5#



#4
 2-Fluorophenol
 Concen: 0.50 ng
 RT: 5.423 min Scan# 222
 Delta R.T. 0.000 min
 Lab File: BE101189.D
 Acq: 2 Apr 2021 8:36

Tgt Ion: 112 Resp: 4639
 Ion Ratio Lower Upper
 112 100
 64 73.3 60.8 91.2
 63 148.7 119.4 179.0



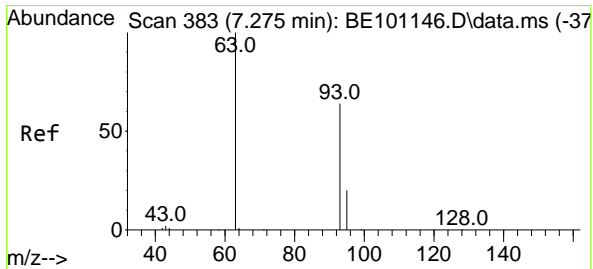
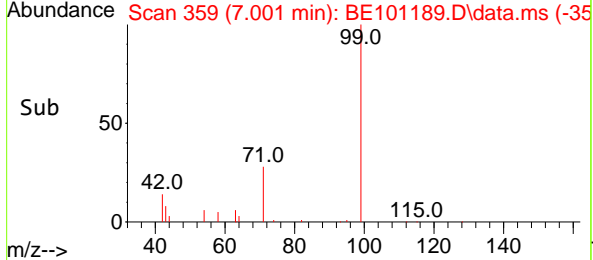
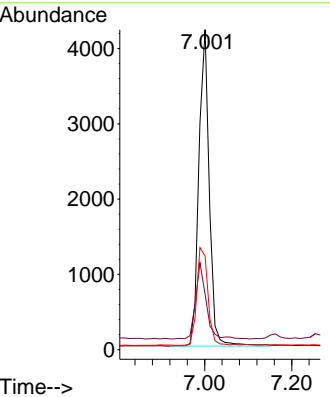
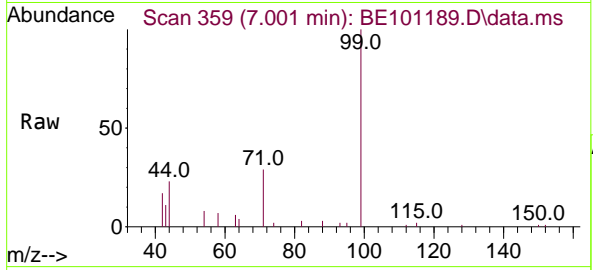


#5
 Phenol-d6
 Concen: 0.49 ng
 RT: 7.001 min Scan# 359
 Delta R.T. 0.000 min
 Lab File: BE101189.D
 Acq: 2 Apr 2021 8:36

Instrument :
 BNA_E
 ClientSampled :
 SSTDCCC0.4

Tgt Ion: 99 Resp: 6986

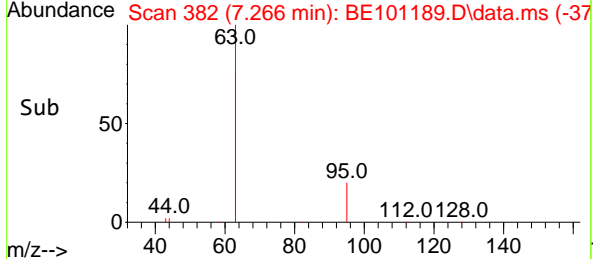
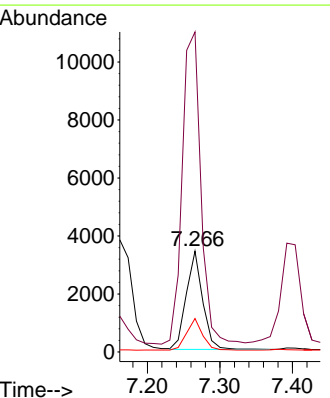
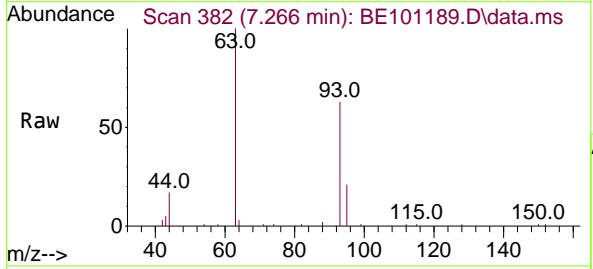
Ion	Ratio	Lower	Upper
99	100		
42	24.4	18.8	28.2
71	33.0	26.3	39.5

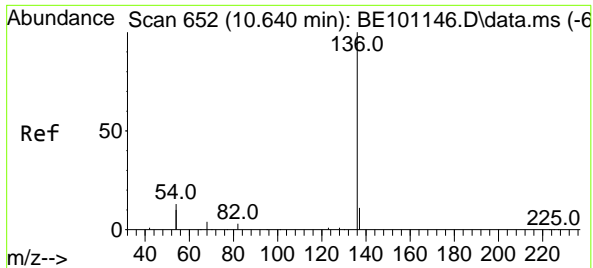


#6
 bis(2-Chloroethyl)ether
 Concen: 0.44 ng
 RT: 7.266 min Scan# 382
 Delta R.T. 0.000 min
 Lab File: BE101189.D
 Acq: 2 Apr 2021 8:36

Tgt Ion: 93 Resp: 5308

Ion	Ratio	Lower	Upper
93	100		
63	361.8	292.5	438.7
95	30.9	25.8	38.6

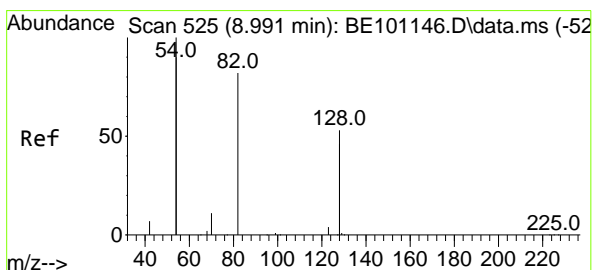
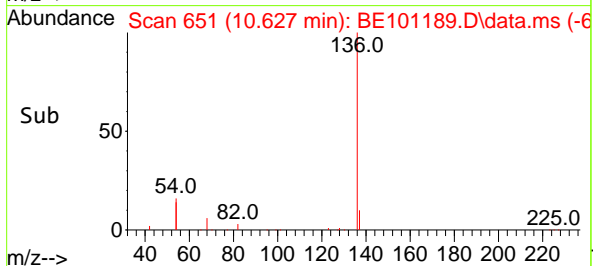
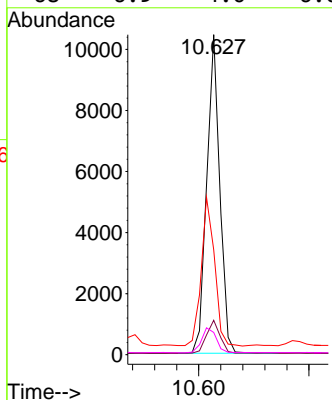
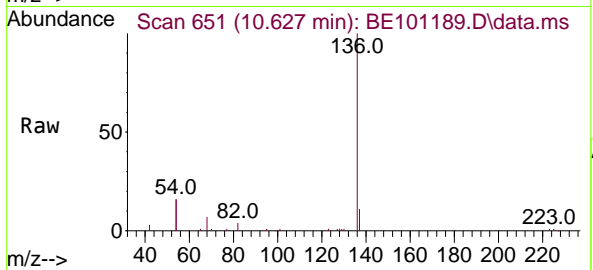




#7
 Naphthalene-d8
 Concen: 0.40 ng
 RT: 10.627 min Scan# 651
 Delta R.T. 0.000 min
 Lab File: BE101189.D
 Acq: 2 Apr 2021 8:36

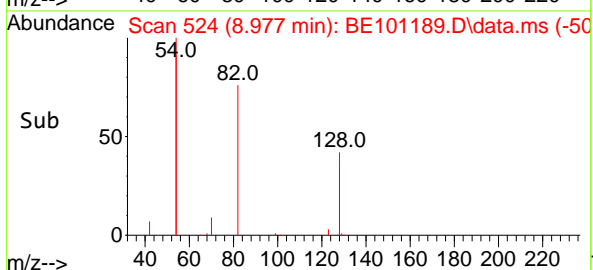
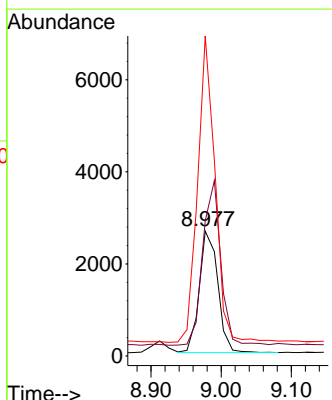
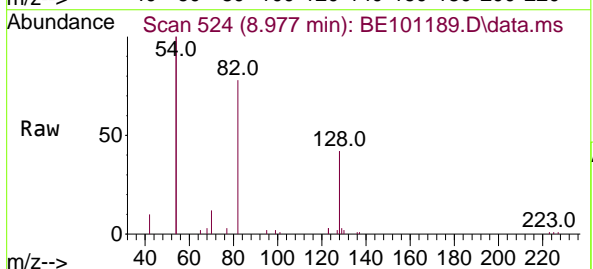
Instrument :
 BNA_E
ClientSampled :
 SSTDCCC0.4

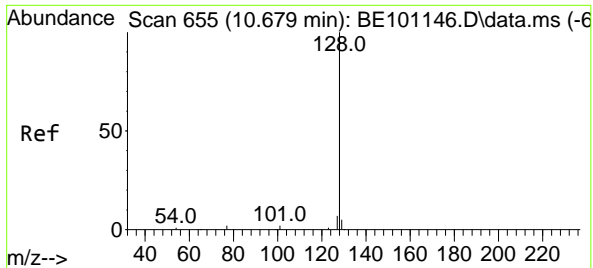
Tgt Ion	Resp	Lower	Upper
136	17088		
136	100		
137	10.8	8.9	13.3
54	32.8	20.2	30.4#
68	6.9	4.0	6.0#



#8
 Nitrobenzene-d5
 Concen: 0.48 ng
 RT: 8.977 min Scan# 524
 Delta R.T. 0.000 min
 Lab File: BE101189.D
 Acq: 2 Apr 2021 8:36

Tgt Ion	Resp	Lower	Upper
82	4848		
82	100		
128	108.3	101.5	152.3
54	256.5	189.8	284.6

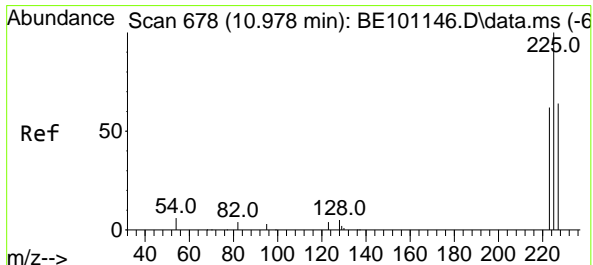
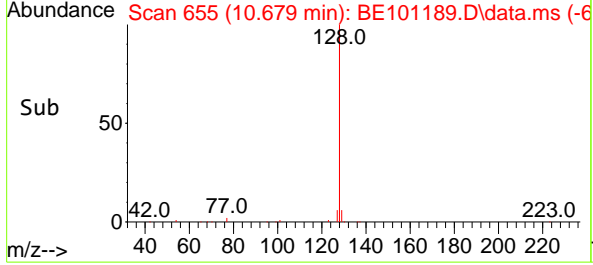
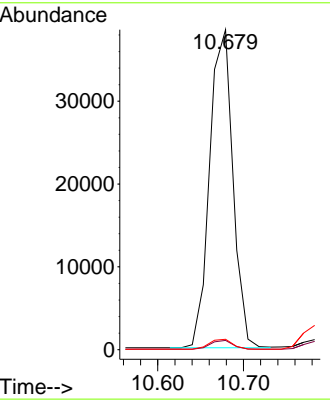
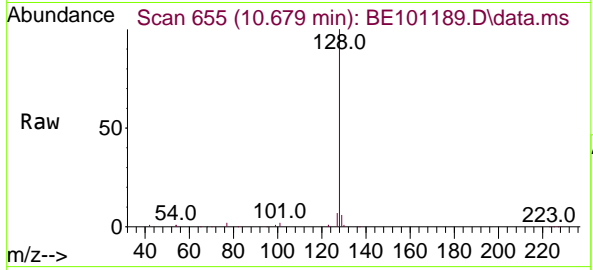




#9
Naphthalene
 Concen: 0.42 ng
 RT: 10.679 min Scan# 655
 Delta R.T. 0.000 min
 Lab File: BE101189.D
 Acq: 2 Apr 2021 8:36

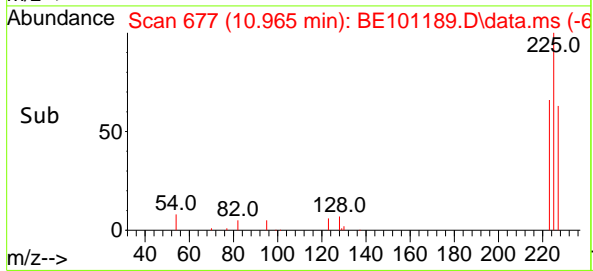
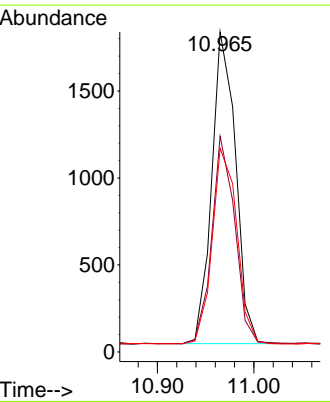
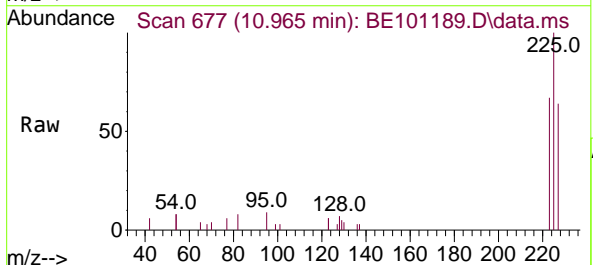
Instrument :
 BNA_E
ClientSampleId :
 SSTDCCC0.4

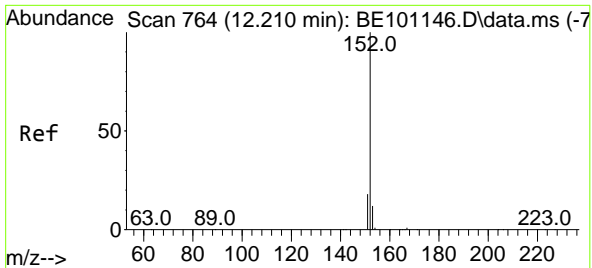
Tgt Ion	Resp	Lower	Upper
128	100		
129	2.9	2.2	3.2
127	3.3	2.7	4.1



#10
Hexachlorobutadiene
 Concen: 0.39 ng
 RT: 10.965 min Scan# 677
 Delta R.T. 0.000 min
 Lab File: BE101189.D
 Acq: 2 Apr 2021 8:36

Tgt Ion	Resp	Lower	Upper
225	100		
223	64.1	50.1	75.1
227	64.8	51.7	77.5

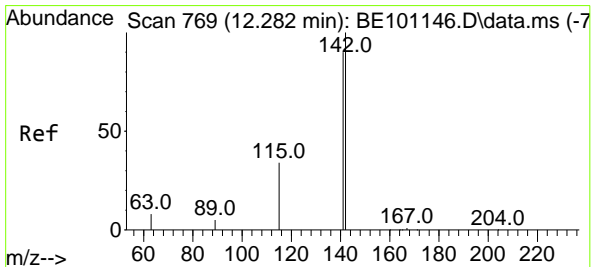
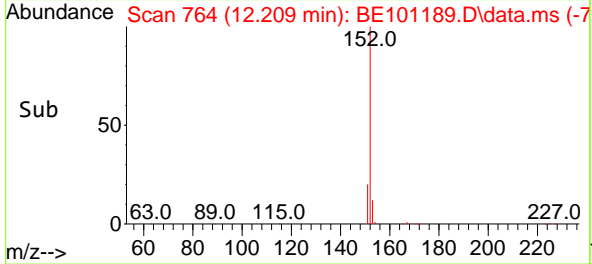
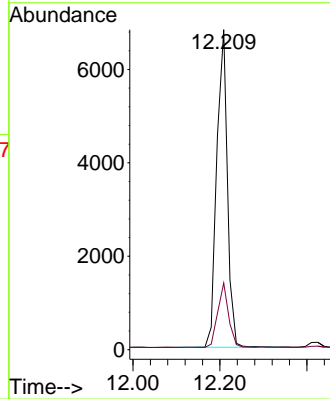
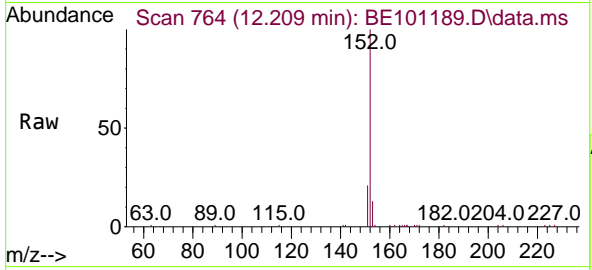




#11
 2-Methylnaphthalene-d10
 Concen: 0.42 ng
 RT: 12.209 min Scan# 764
 Delta R.T. 0.000 min
 Lab File: BE101189.D
 Acq: 2 Apr 2021 8:36

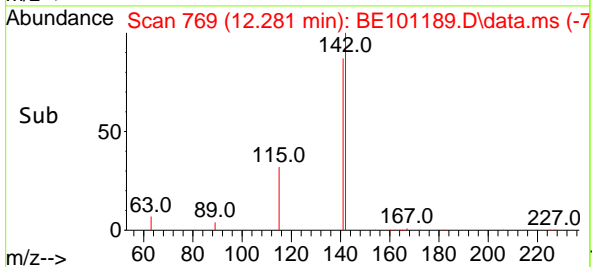
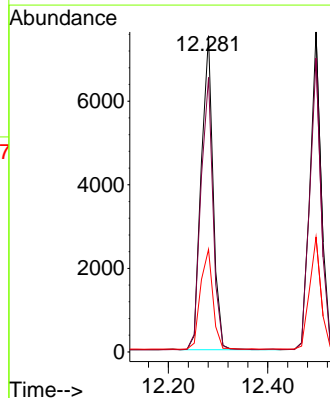
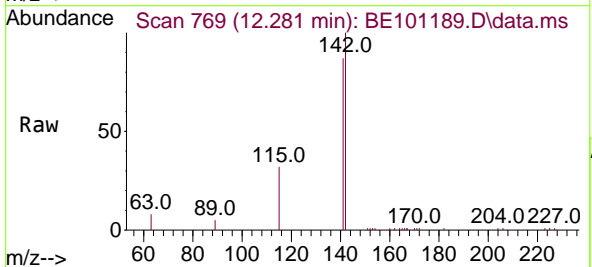
Instrument :
 BNA_E
 ClientSampleId :
 SSTDCCC0.4

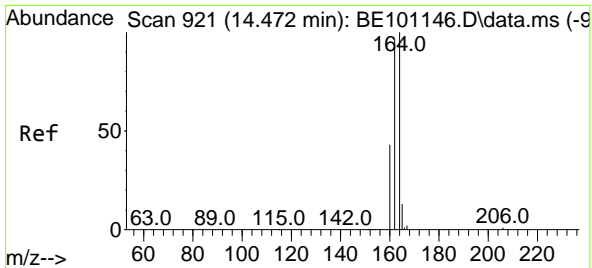
Tgt Ion:152 Resp: 11602
 Ion Ratio Lower Upper
 152 100
 151 20.6 16.6 24.8



#12
 2-Methylnaphthalene
 Concen: 0.42 ng
 RT: 12.281 min Scan# 769
 Delta R.T. 0.000 min
 Lab File: BE101189.D
 Acq: 2 Apr 2021 8:36

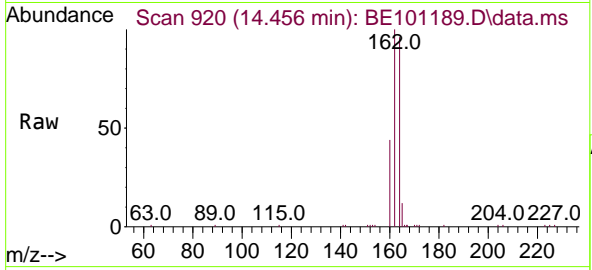
Tgt Ion:142 Resp: 12477
 Ion Ratio Lower Upper
 142 100
 141 86.8 71.8 107.6
 115 32.4 27.8 41.6





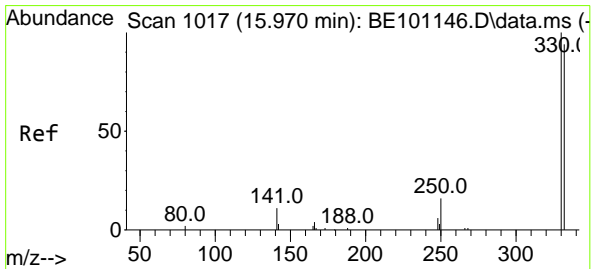
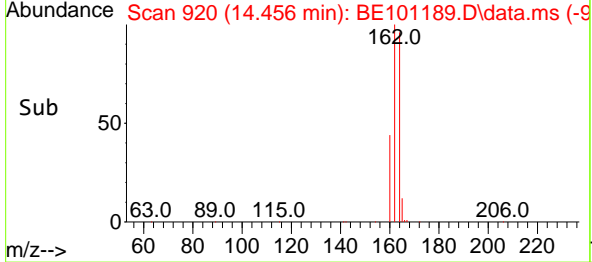
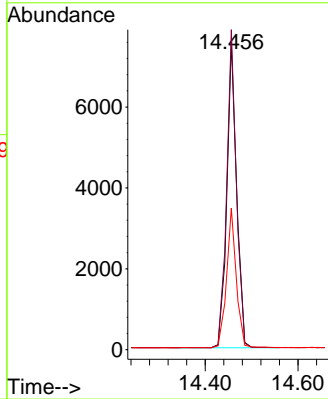
#13
 Acenaphthene-d10
 Concen: 0.40 ng
 RT: 14.456 min Scan# 920
 Delta R.T. 0.000 min
 Lab File: BE101189.D
 Acq: 2 Apr 2021 8:36

Instrument :
 BNA_E
ClientSampled :
 SSTDCCC0.4

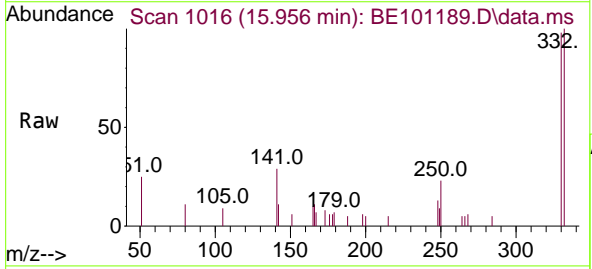


Tgt Ion:164 Resp: 11161

Ion	Ratio	Lower	Upper
164	100		
162	104.0	76.6	115.0
160	46.0	34.5	51.7

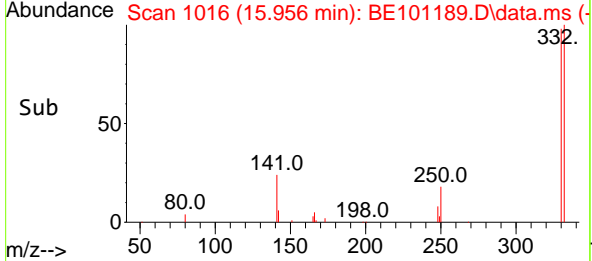
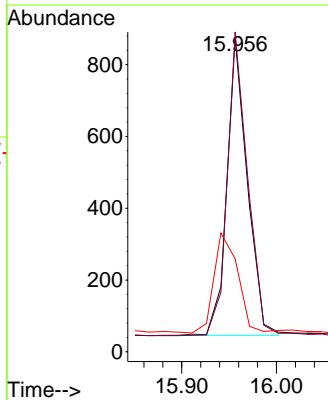


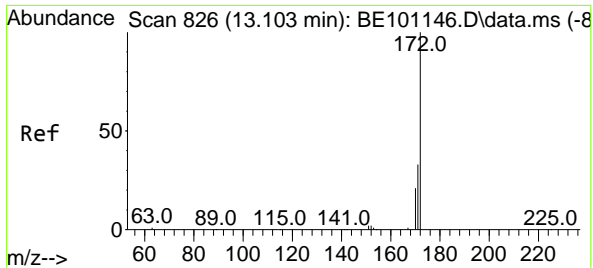
#14
 2,4,6-Tribromophenol
 Concen: 0.62 ng
 RT: 15.956 min Scan# 1016
 Delta R.T. 0.000 min
 Lab File: BE101189.D
 Acq: 2 Apr 2021 8:36



Tgt Ion:330 Resp: 1242

Ion	Ratio	Lower	Upper
330	100		
332	101.5	69.1	103.7
141	38.0	30.6	45.8

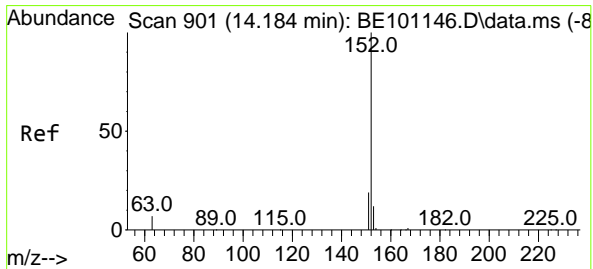
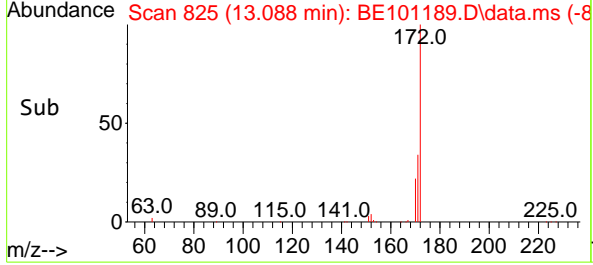
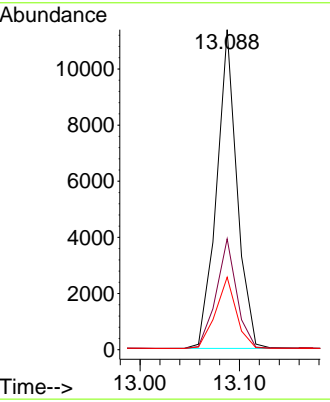
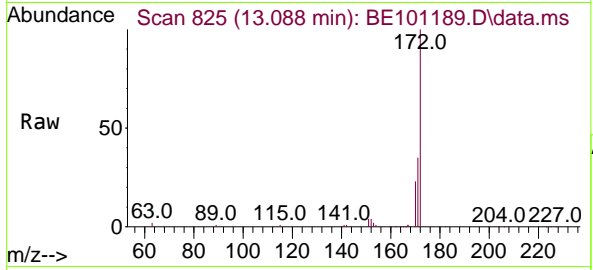




#15
 2-Fluorobiphenyl
 Concen: 0.39 ng
 RT: 13.088 min Scan# 825
 Delta R.T. 0.000 min
 Lab File: BE101189.D
 Acq: 2 Apr 2021 8:36

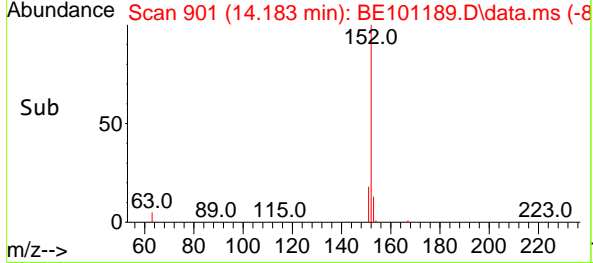
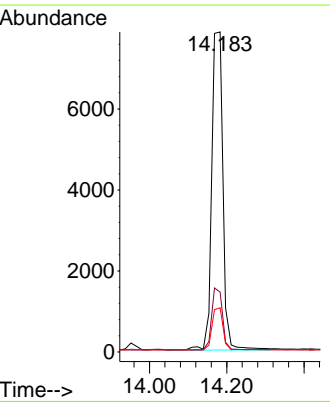
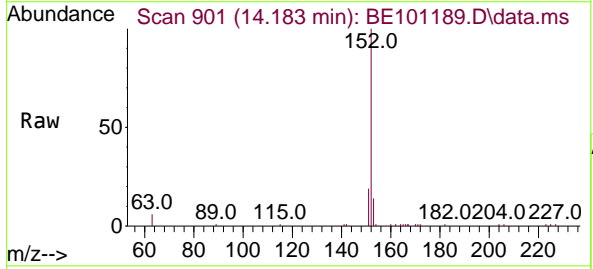
Instrument :
 BNA_E
 ClientSampleId :
 SSTDCCC0.4

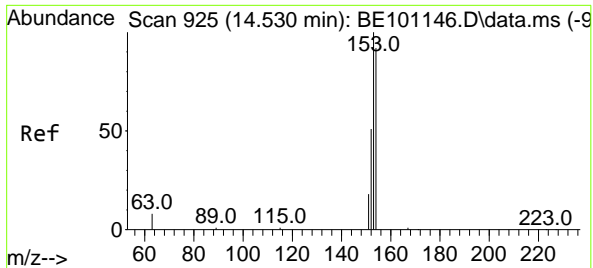
Tgt Ion	Resp	Lower	Upper
172	16197		
171	34.7	26.4	39.6
170	22.6	17.4	26.0



#16
 Acenaphthylene
 Concen: 0.37 ng
 RT: 14.183 min Scan# 901
 Delta R.T. 0.000 min
 Lab File: BE101189.D
 Acq: 2 Apr 2021 8:36

Tgt Ion	Resp	Lower	Upper
152	15791		
151	18.8	15.4	23.0
153	13.0	10.3	15.5

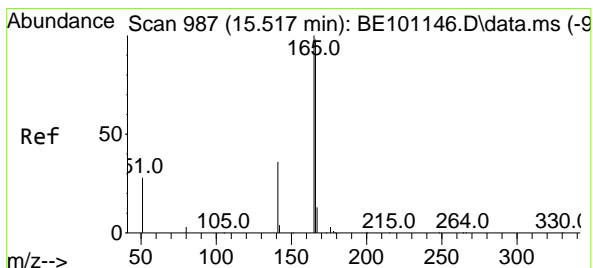
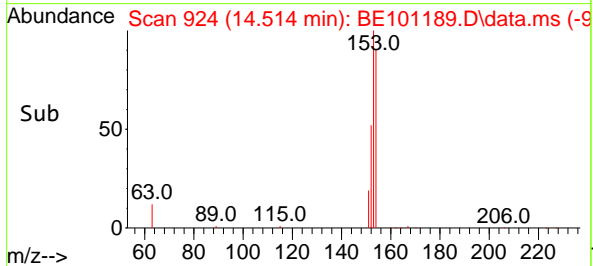
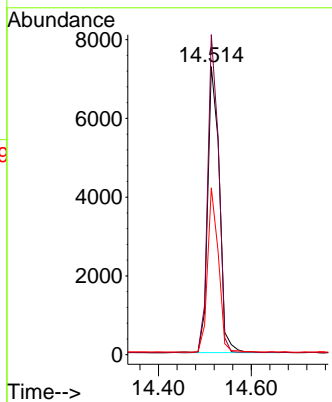
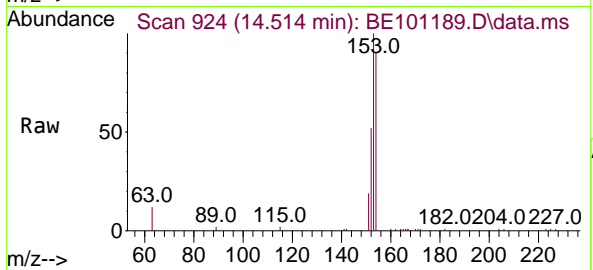




#17
 Acenaphthene
 Concen: 0.41 ng
 RT: 14.514 min Scan# 924
 Delta R.T. 0.000 min
 Lab File: BE101189.D
 Acq: 2 Apr 2021 8:36

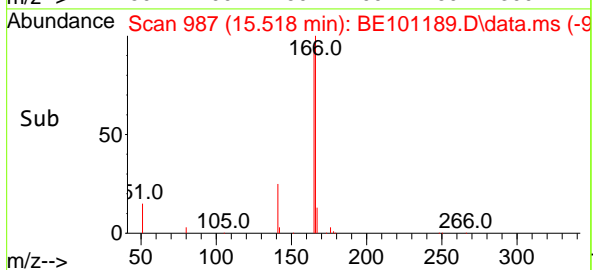
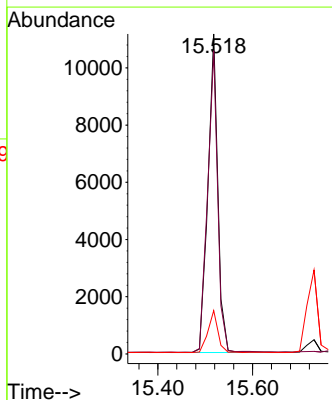
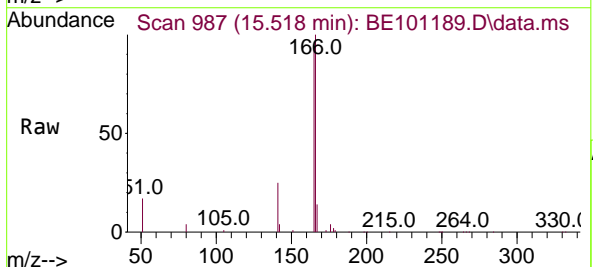
Instrument :
 BNA_E
 ClientSampleId :
 SSTDCCC0.4

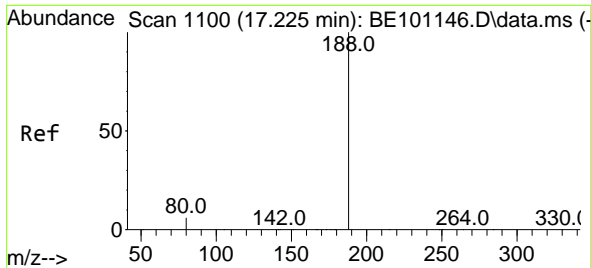
Tgt Ion	Resp	Lower	Upper
154	12594		
153	104.8	86.7	130.1
152	53.5	46.1	69.1



#18
 Fluorene
 Concen: 0.40 ng
 RT: 15.518 min Scan# 987
 Delta R.T. 0.000 min
 Lab File: BE101189.D
 Acq: 2 Apr 2021 8:36

Tgt Ion	Resp	Lower	Upper
166	16153		
165	96.9	78.9	118.3
167	13.1	10.7	16.1

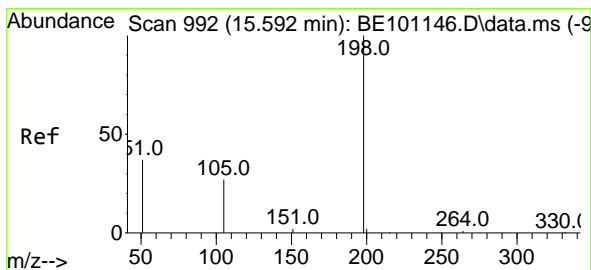
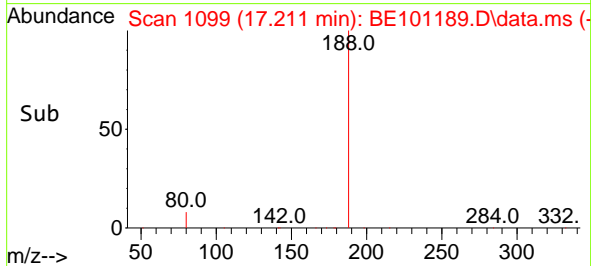
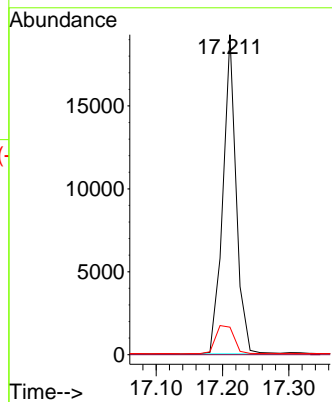
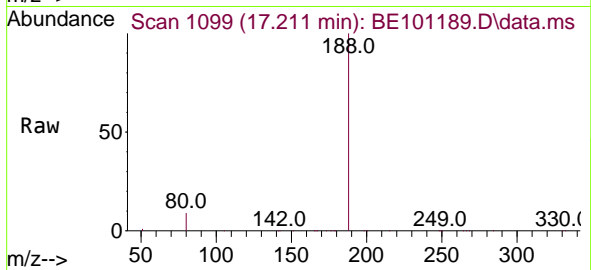




#19
 Phenanthrene-d10
 Concen: 0.40 ng
 RT: 17.211 min Scan# 1099
 Delta R.T. 0.000 min
 Lab File: BE101189.D
 Acq: 2 Apr 2021 8:36

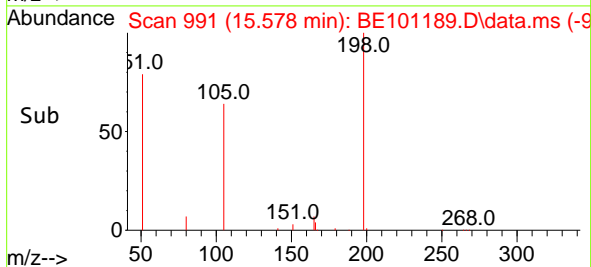
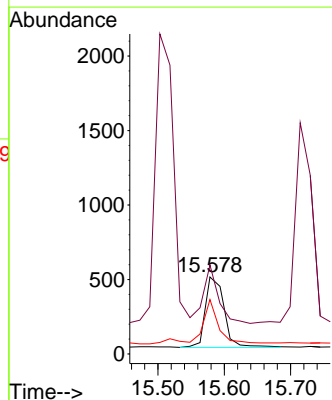
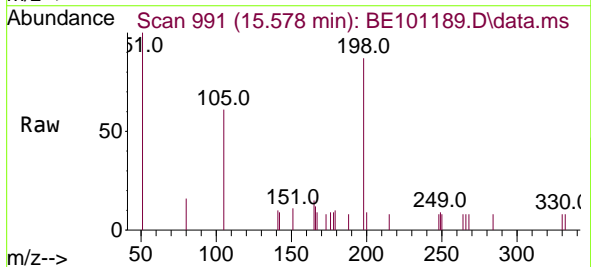
Instrument :
 BNA_E
 ClientSampleId :
 SSTDCCC0.4

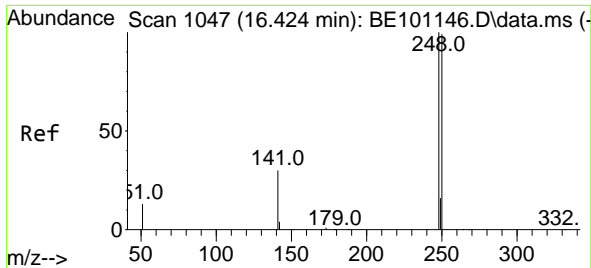
Tgt Ion:188 Resp: 26840
 Ion Ratio Lower Upper
 188 100
 94 0.0 0.0 0.0
 80 8.6 4.8 7.2#



#20
 4,6-Dinitro-2-methylphenol
 Concen: 0.68 ng
 RT: 15.578 min Scan# 991
 Delta R.T. 0.000 min
 Lab File: BE101189.D
 Acq: 2 Apr 2021 8:36

Tgt Ion:198 Resp: 929
 Ion Ratio Lower Upper
 198 100
 51 115.5 68.8 103.2#
 105 70.8 32.7 49.1#

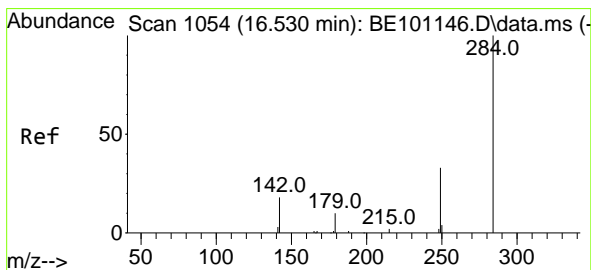
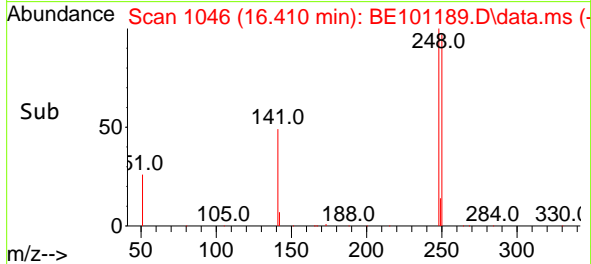
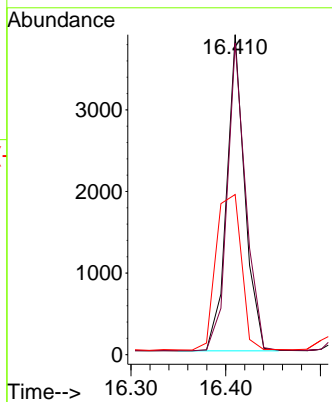
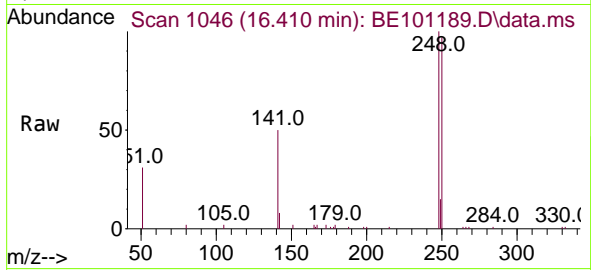




#21
 4-Bromophenyl-phenylether
 Concen: 0.43 ng
 RT: 16.410 min Scan# 1046
 Delta R.T. 0.000 min
 Lab File: BE101189.D
 Acq: 2 Apr 2021 8:36

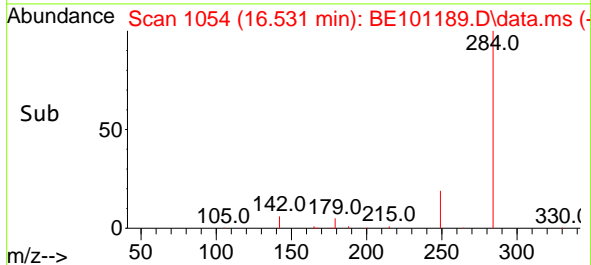
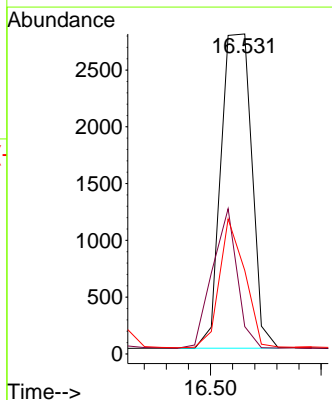
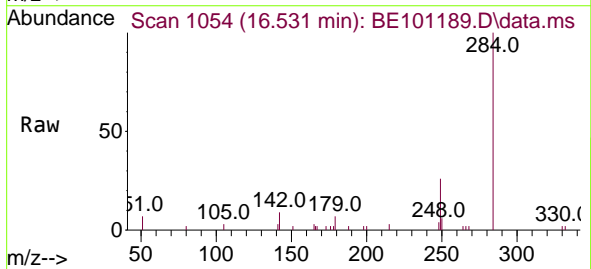
Instrument :
 BNA_E
 ClientSampleId :
 SSTDCCC0.4

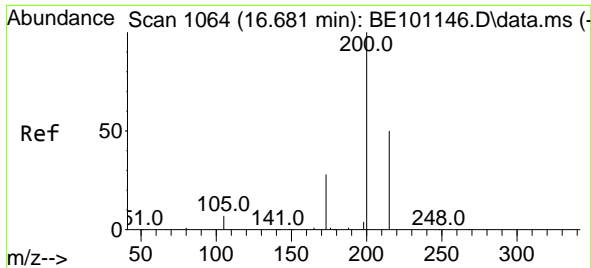
Tgt Ion	Resp	Lower	Upper
248	100		
250	97.4	79.0	118.6
141	50.0	24.9	37.3#



#22
 Hexachlorobenzene
 Concen: 0.41 ng
 RT: 16.531 min Scan# 1054
 Delta R.T. 0.000 min
 Lab File: BE101189.D
 Acq: 2 Apr 2021 8:36

Tgt Ion	Resp	Lower	Upper
284	100		
142	35.9	28.3	42.5
249	34.0	27.1	40.7



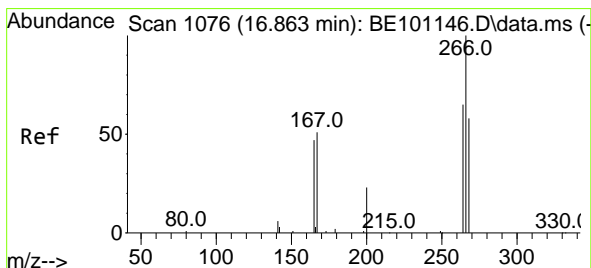
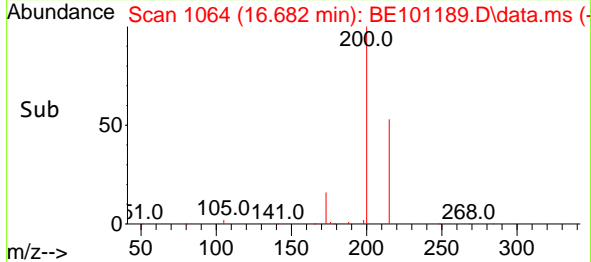
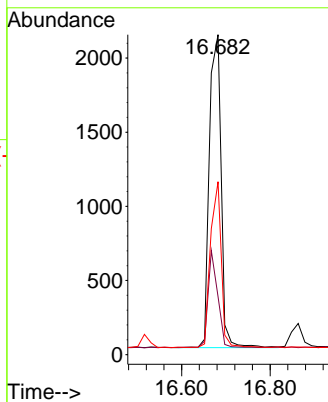
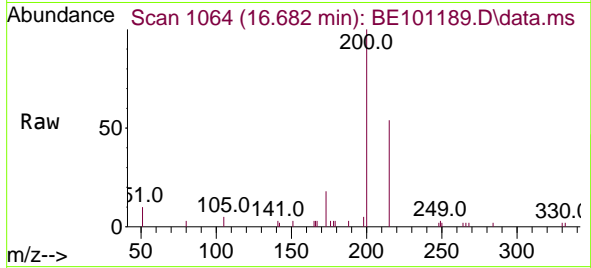


#23
 Atrazine
 Concen: 0.52 ng
 RT: 16.682 min Scan# 1064
 Delta R.T. 0.000 min
 Lab File: BE101189.D
 Acq: 2 Apr 2021 8:36

Instrument :
 BNA_E
 ClientSampleId :
 SSTDCCC0.4

Tgt Ion:200 Resp: 3893

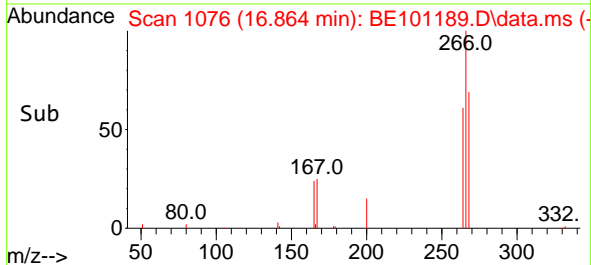
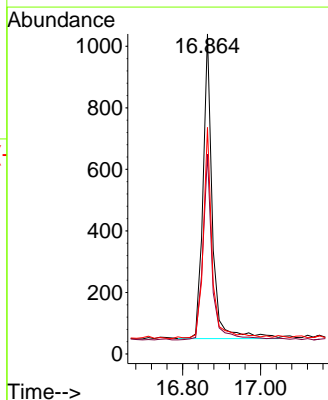
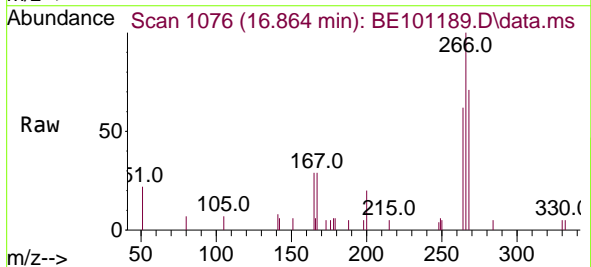
Ion	Ratio	Lower	Upper
200	100		
173	18.1	23.9	35.9#
215	54.0	40.6	61.0

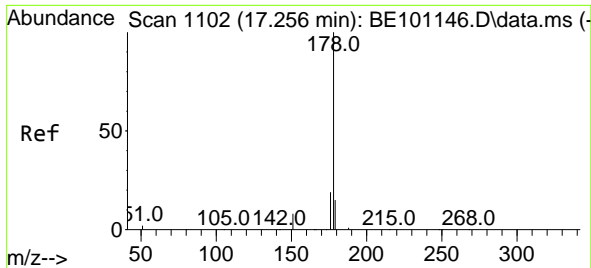


#24
 Pentachlorophenol
 Concen: 0.48 ng
 RT: 16.864 min Scan# 1076
 Delta R.T. 0.000 min
 Lab File: BE101189.D
 Acq: 2 Apr 2021 8:36

Tgt Ion:266 Resp: 1662

Ion	Ratio	Lower	Upper
266	100		
264	61.4	51.4	77.0
268	64.2	49.9	74.9

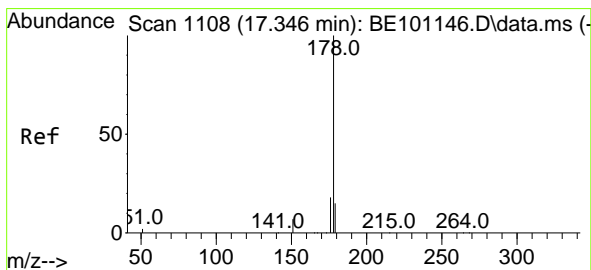
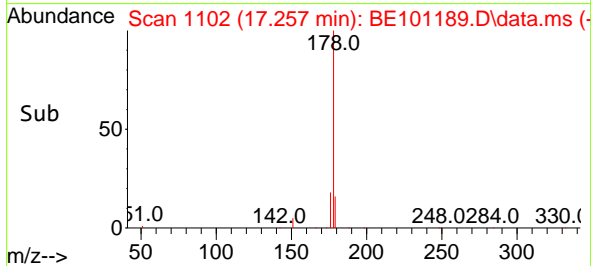
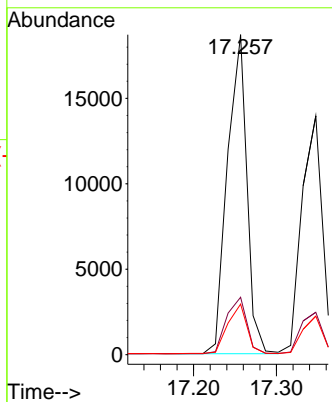
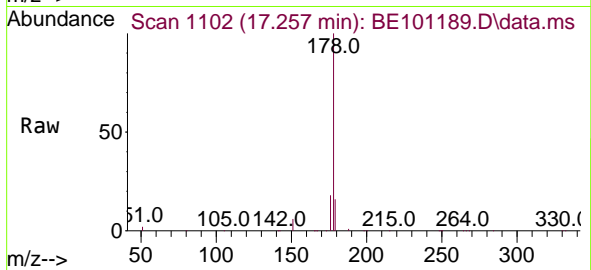




#25
 Phenanthrene
 Concen: 0.41 ng
 RT: 17.257 min Scan# 1102
 Delta R.T. 0.000 min
 Lab File: BE101189.D
 Acq: 2 Apr 2021 8:36

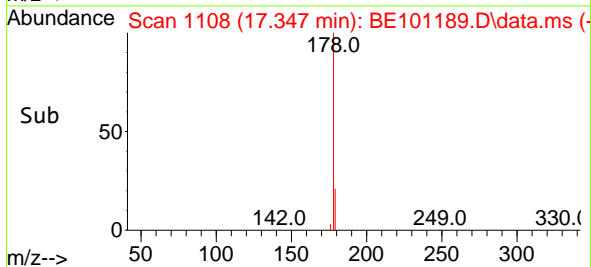
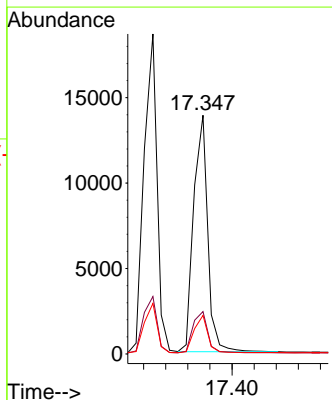
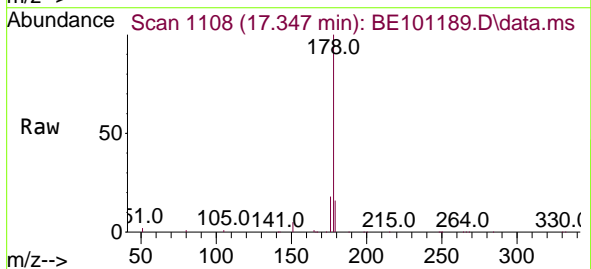
Instrument :
 BNA_E
 ClientSampleId :
 SSTDCCC0.4

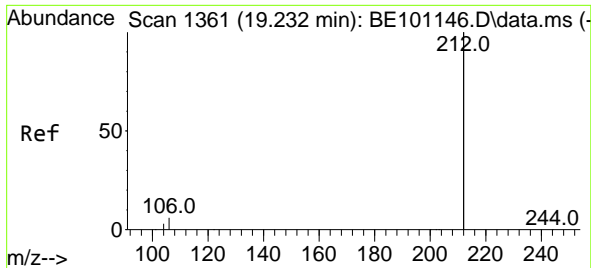
Tgt Ion	Resp	Lower	Upper
178	30594		
176	18.5	14.7	22.1
179	15.5	12.4	18.6



#26
 Anthracene
 Concen: 0.38 ng
 RT: 17.347 min Scan# 1108
 Delta R.T. 0.000 min
 Lab File: BE101189.D
 Acq: 2 Apr 2021 8:36

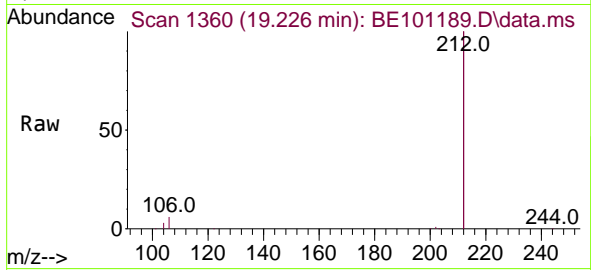
Tgt Ion	Resp	Lower	Upper
178	24495		
176	18.4	14.4	21.6
179	15.5	12.2	18.4



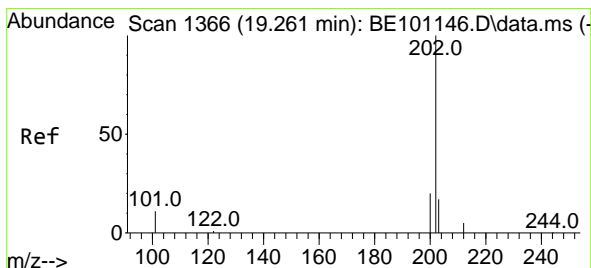
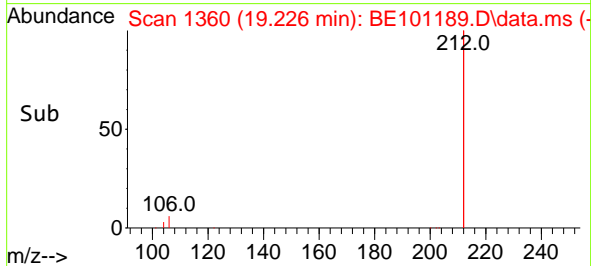
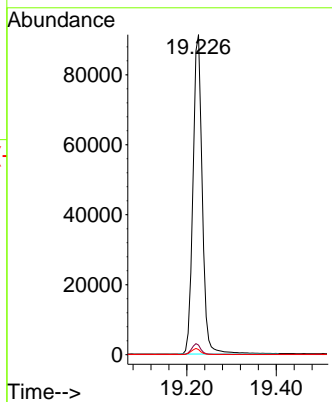


#27
 Fluoranthene-d10
 Concen: 0.39 ng
 RT: 19.226 min Scan# 1360
 Delta R.T. 0.000 min
 Lab File: BE101189.D
 Acq: 2 Apr 2021 8:36

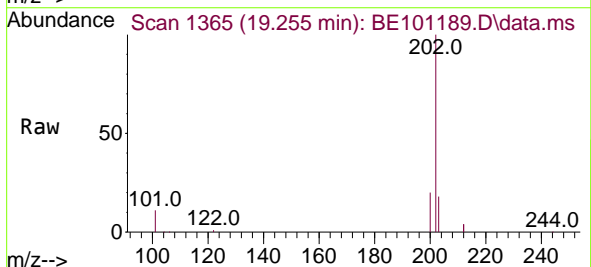
Instrument :
 BNA_E
 ClientSampled :
 SSTDCCC0.4



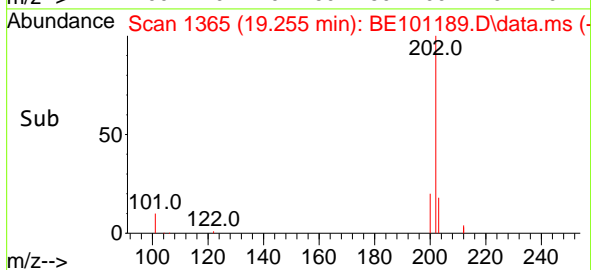
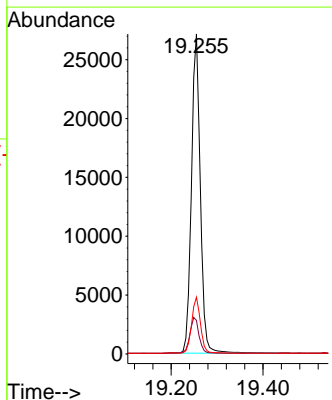
Tgt Ion:212 Resp: 131724
 Ion Ratio Lower Upper
 212 100
 106 3.3 2.6 3.8
 104 1.8 1.4 2.2

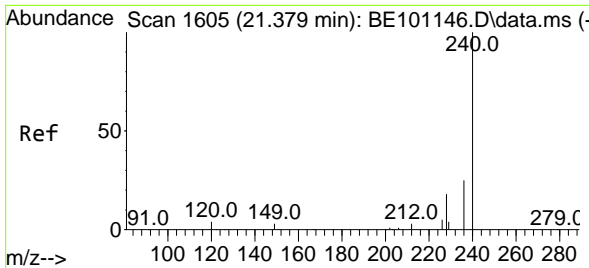


#28
 Fluoranthene
 Concen: 0.38 ng
 RT: 19.255 min Scan# 1365
 Delta R.T. 0.000 min
 Lab File: BE101189.D
 Acq: 2 Apr 2021 8:36



Tgt Ion:202 Resp: 36198
 Ion Ratio Lower Upper
 202 100
 101 11.7 8.9 13.3
 203 17.4 13.8 20.6



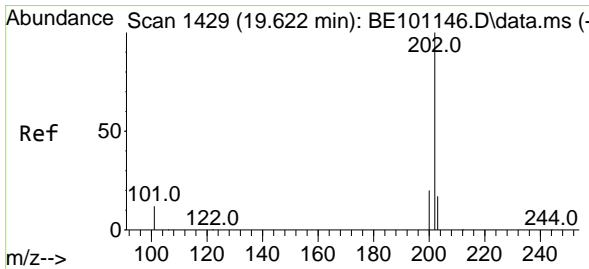
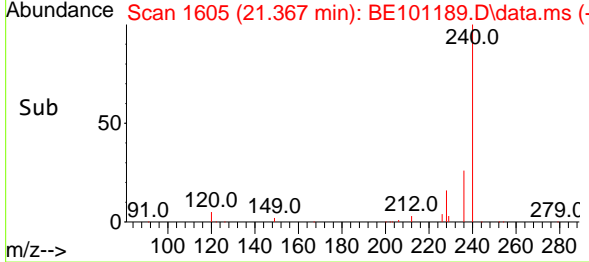
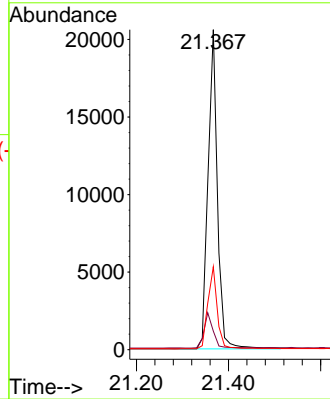
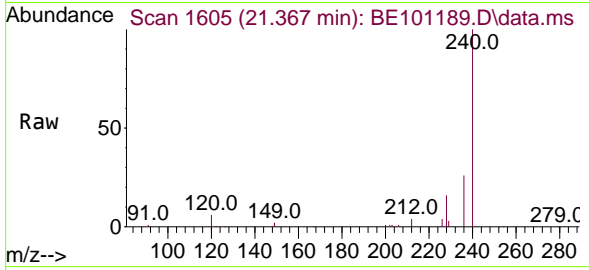


#29
 Chrysene-d12
 Concen: 0.40 ng
 RT: 21.367 min Scan# 1605
 Delta R.T. 0.000 min
 Lab File: BE101189.D
 Acq: 2 Apr 2021 8:36

Instrument :
 BNA_E
ClientSampled :
 SSTDCCC0.4

Tgt Ion:240 Resp: 29176

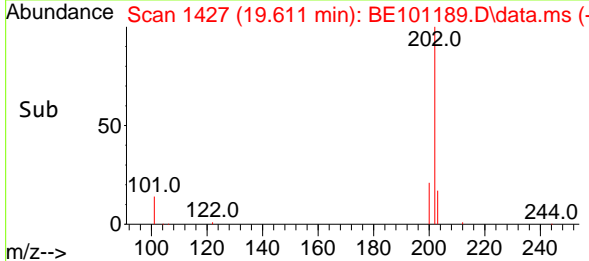
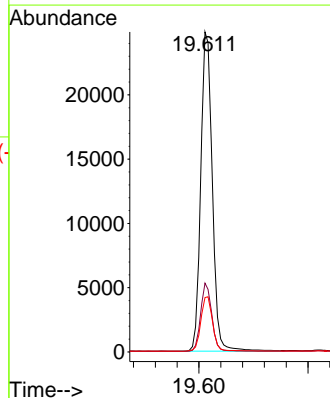
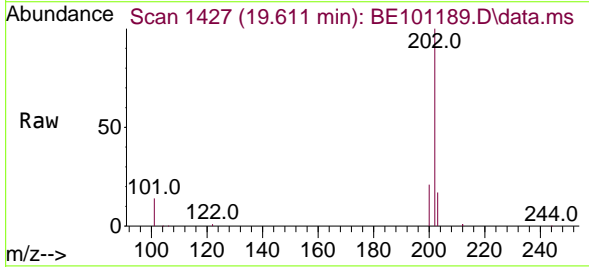
Ion	Ratio	Lower	Upper
240	100		
120	5.8	4.1	6.1
236	25.9	20.3	30.5

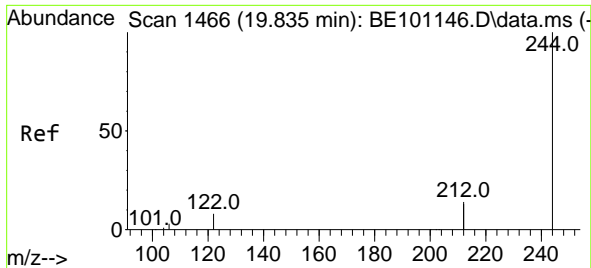


#30
 Pyrene
 Concen: 0.42 ng
 RT: 19.611 min Scan# 1427
 Delta R.T. 0.000 min
 Lab File: BE101189.D
 Acq: 2 Apr 2021 8:36

Tgt Ion:202 Resp: 36463

Ion	Ratio	Lower	Upper
202	100		
200	20.7	16.2	24.2
203	17.5	13.9	20.9

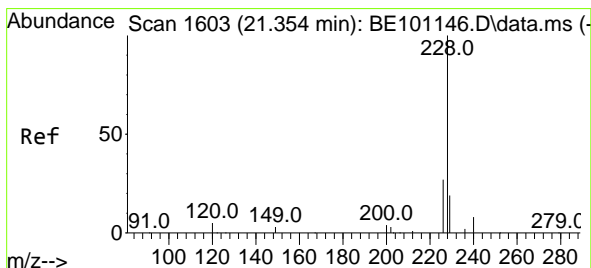
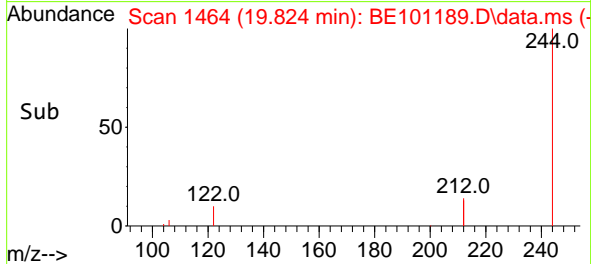
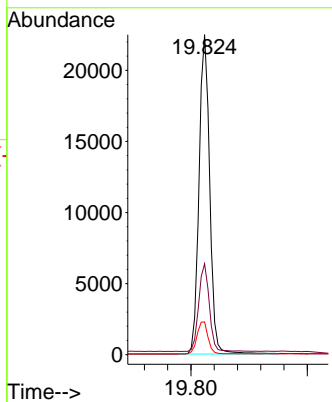
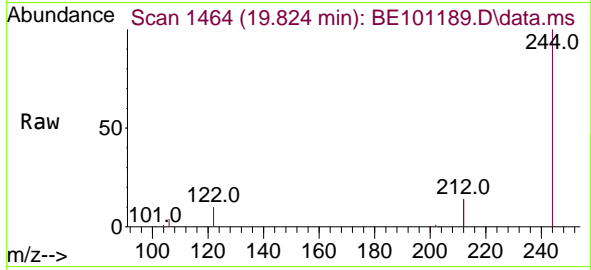




#31
 Terphenyl-d14
 Concen: 0.43 ng
 RT: 19.824 min Scan# 1464
 Delta R.T. 0.000 min
 Lab File: BE101189.D
 Acq: 2 Apr 2021 8:36

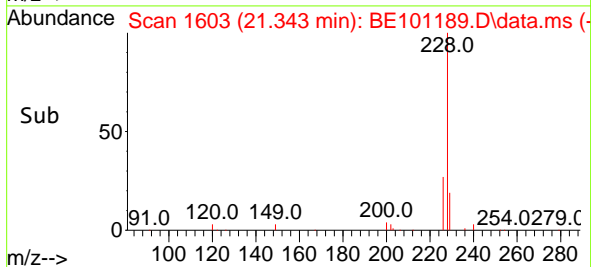
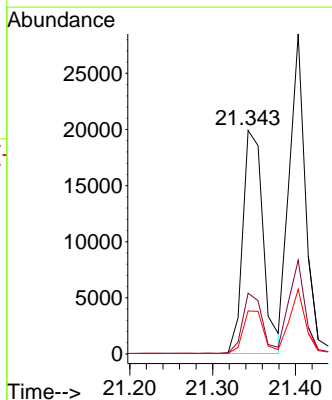
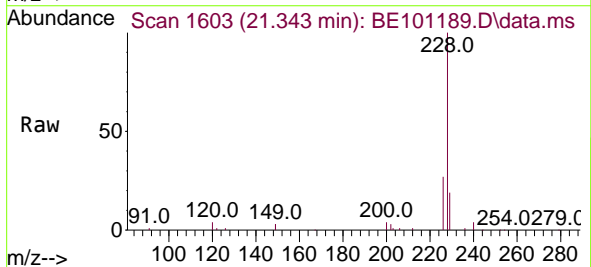
Instrument :
 BNA_E
 ClientSampled :
 SSTDCCC0.4

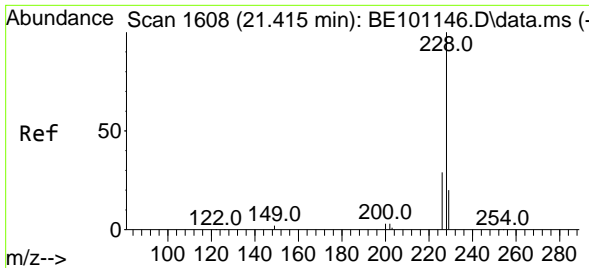
Tgt Ion	Resp	Lower	Upper
244	100		
212	28.4	21.7	32.5
122	10.2	6.6	10.0#



#32
 Benzo(a)anthracene
 Concen: 0.45 ng
 RT: 21.343 min Scan# 1603
 Delta R.T. 0.000 min
 Lab File: BE101189.D
 Acq: 2 Apr 2021 8:36

Tgt Ion	Resp	Lower	Upper
228	100		
226	27.2	21.8	32.8
229	19.3	15.4	23.0

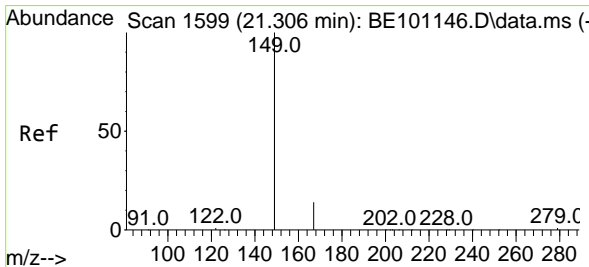
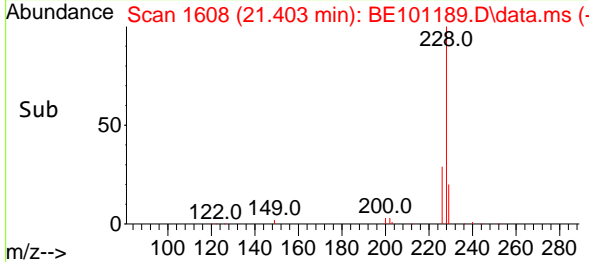
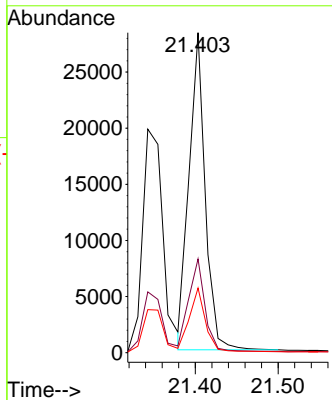
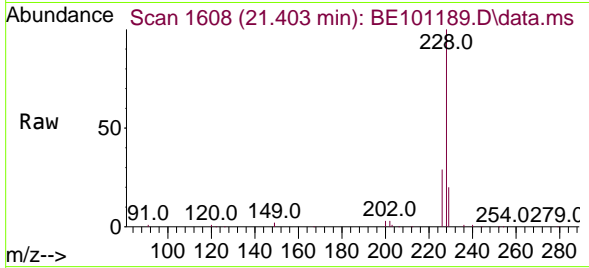




#33
 Chrysene
 Concen: 0.43 ng
 RT: 21.403 min Scan# 1608
 Delta R.T. 0.000 min
 Lab File: BE101189.D
 Acq: 2 Apr 2021 8:36

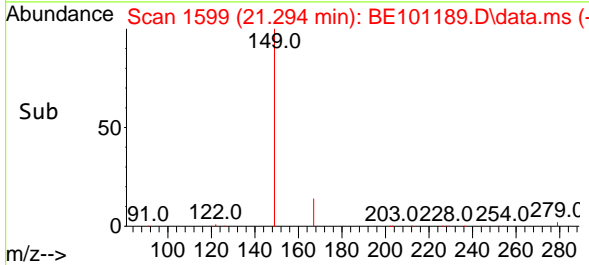
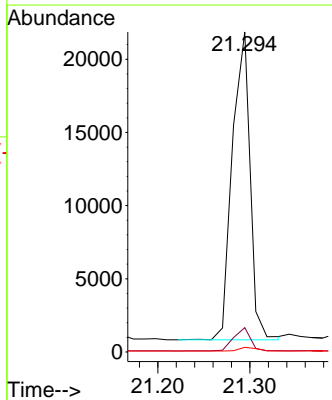
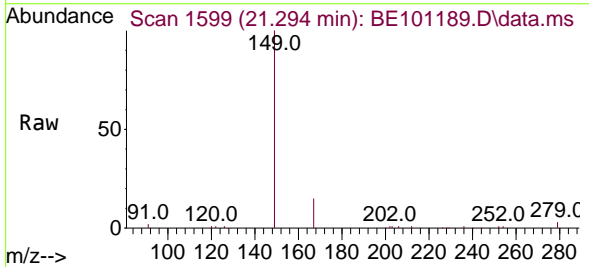
Instrument :
 BNA_E
 ClientSampleId :
 SSTDCCC0.4

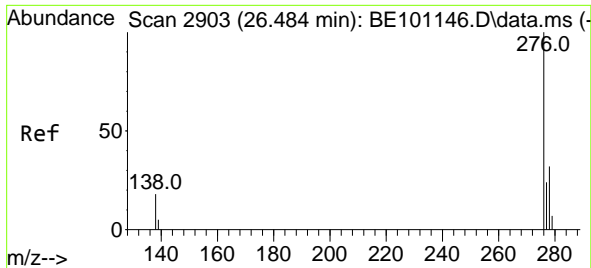
Tgt Ion	Resp	Lower	Upper
228	100		
226	29.3	22.8	34.2
229	20.2	16.2	24.2



#34
 Bis(2-ethylhexyl)phthalate
 Concen: 0.57 ng
 RT: 21.294 min Scan# 1599
 Delta R.T. 0.000 min
 Lab File: BE101189.D
 Acq: 2 Apr 2021 8:36

Tgt Ion	Resp	Lower	Upper
149	100		
167	7.1	5.4	8.2
279	1.2	0.9	1.3

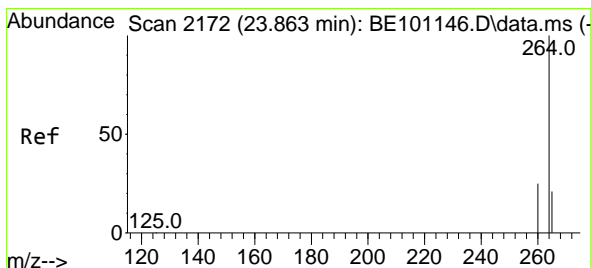
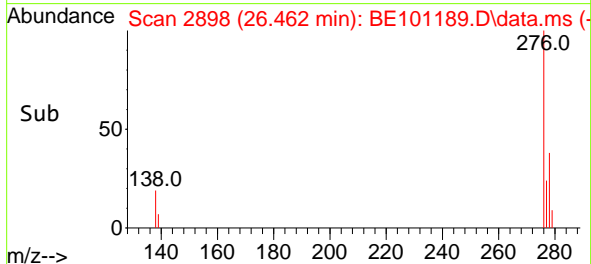
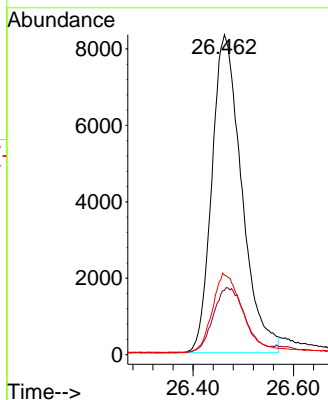
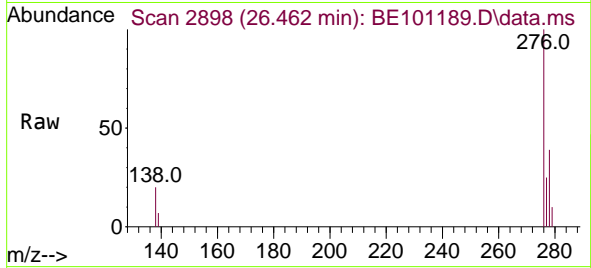




#35
 Indeno(1,2,3-cd)pyrene
 Concen: 0.58 ng
 RT: 26.462 min Scan# 2898
 Delta R.T. 0.000 min
 Lab File: BE101189.D
 Acq: 2 Apr 2021 8:36

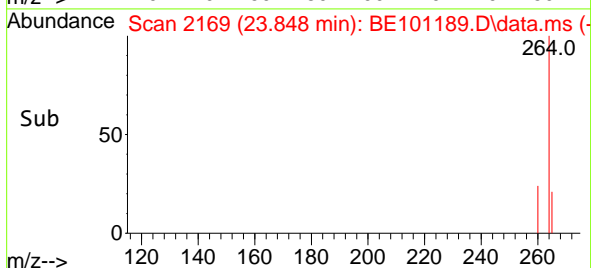
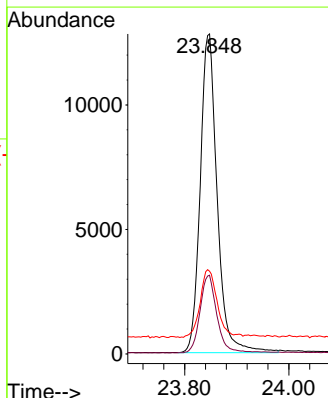
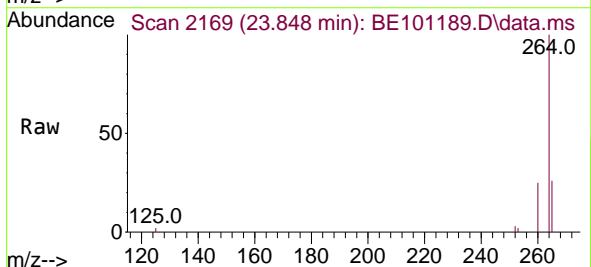
Instrument :
 BNA_E
 ClientSampled :
 SSTDCCC0.4

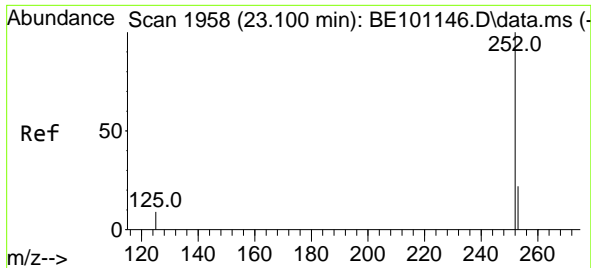
Tgt Ion	Resp	Lower	Upper
276	34279		
138	21.7	17.1	25.7
277	25.1	19.8	29.8



#36
 Perylene-d12
 Concen: 0.40 ng
 RT: 23.848 min Scan# 2169
 Delta R.T. 0.000 min
 Lab File: BE101189.D
 Acq: 2 Apr 2021 8:36

Tgt Ion	Resp	Lower	Upper
264	28890		
260	24.6	20.5	30.7
265	25.8	20.6	30.8

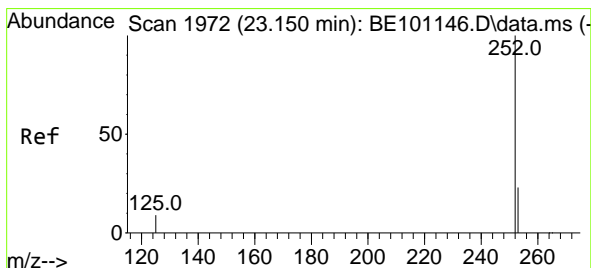
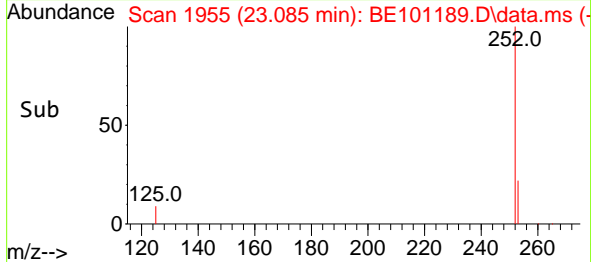
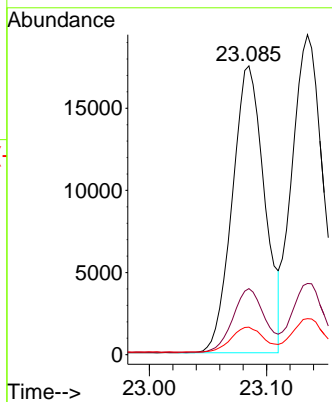
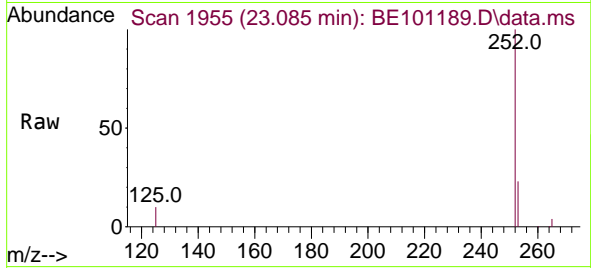




#37
 Benzo(b)fluoranthene
 Concen: 0.44 ng
 RT: 23.085 min Scan# 1955
 Delta R.T. 0.000 min
 Lab File: BE101189.D
 Acq: 2 Apr 2021 8:36

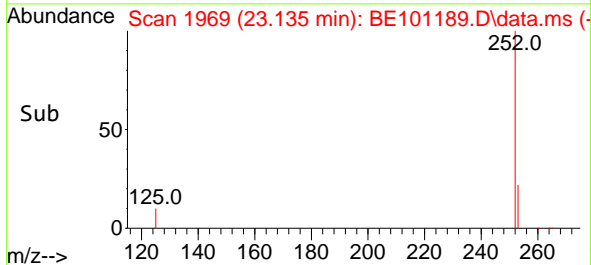
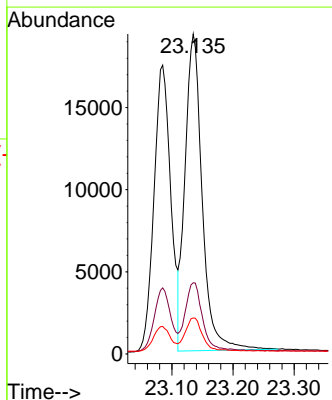
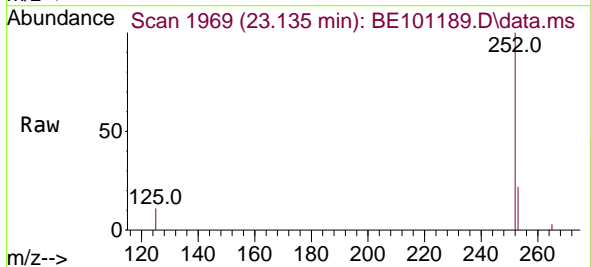
Instrument :
 BNA_E
 ClientSampled :
 SSTDCCC0.4

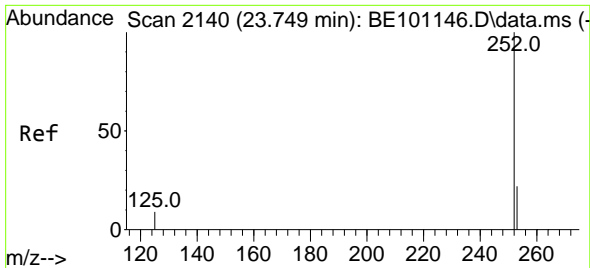
Tgt Ion:252 Resp: 33420
 Ion Ratio Lower Upper
 252 100
 253 22.9 17.8 26.8
 125 9.6 7.5 11.3



#38
 Benzo(k)fluoranthene
 Concen: 0.39 ng
 RT: 23.135 min Scan# 1969
 Delta R.T. 0.000 min
 Lab File: BE101189.D
 Acq: 2 Apr 2021 8:36

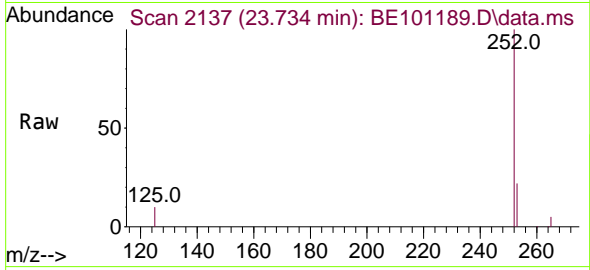
Tgt Ion:252 Resp: 37627
 Ion Ratio Lower Upper
 252 100
 253 22.2 18.2 27.4
 125 11.3 7.5 11.3





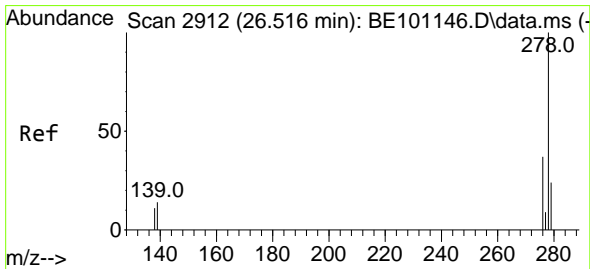
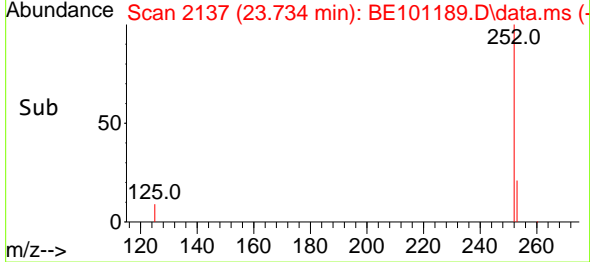
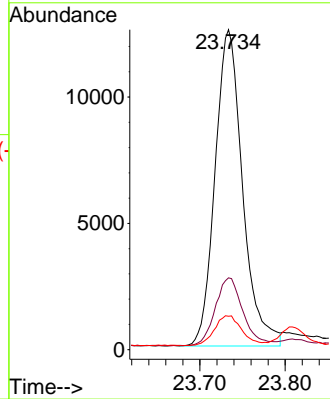
#39
 Benzo(a)pyrene
 Concen: 0.40 ng
 RT: 23.734 min Scan# 2137
 Delta R.T. 0.000 min
 Lab File: BE101189.D
 Acq: 2 Apr 2021 8:36

Instrument :
 BNA_E
 ClientSampleId :
 SSTDCCC0.4

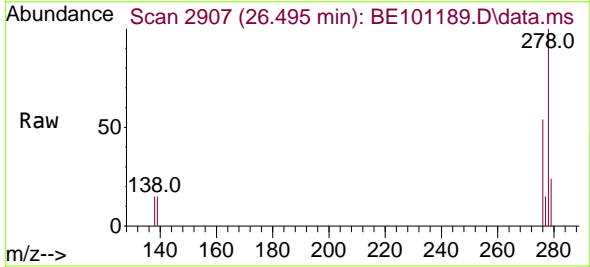


Tgt Ion:252 Resp: 28111

Ion	Ratio	Lower	Upper
252	100		
253	22.5	18.6	28.0
125	10.4	8.3	12.5

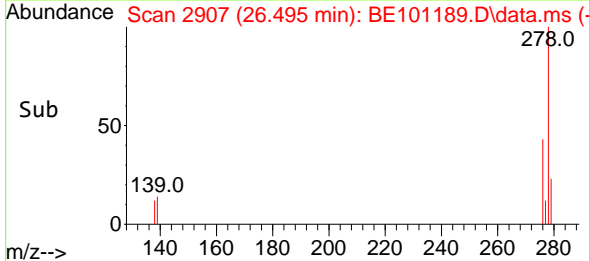
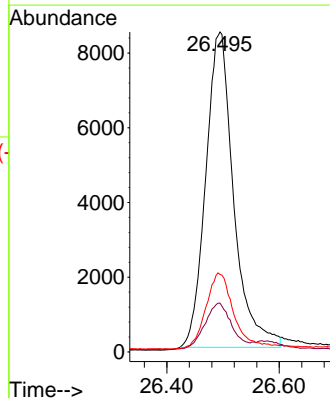


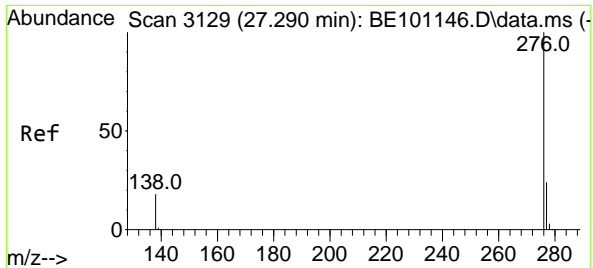
#40
 Dibenzo(a,h)anthracene
 Concen: 0.50 ng
 RT: 26.495 min Scan# 2907
 Delta R.T. 0.000 min
 Lab File: BE101189.D
 Acq: 2 Apr 2021 8:36



Tgt Ion:278 Resp: 29100

Ion	Ratio	Lower	Upper
278	100		
139	15.2	12.0	18.0
279	24.2	20.2	30.4





#41
 Benzo(g,h,i)perylene
 Concen: 0.44 ng
 RT: 27.265 min Scan# 3123
 Delta R.T. 0.000 min
 Lab File: BE101189.D
 Acq: 2 Apr 2021 8:36

Instrument :
 BNA_E
 ClientSampled :
 SSTDCCC0.4

Tgt Ion	Resp	Lower	Upper
276	32148		
276	100		
277	24.3	19.7	29.5
138	19.7	15.3	22.9

