

Data Path : Z:\SVOASRV\HPCHEM1\BNA E\DATA\BE040519\  
 Data File : BE099302.D  
 Acq On : 5 Apr 2019 10:18  
 Operator : JU/SJ  
 Sample : SSTDCCC0.4  
 Misc :  
 ALS Vial : 2 Sample Multiplier: 1

Instrument :  
 BNA\_E  
 ClientSampleId :  
 SSTDCCC0.4

Quant Time: Apr 05 15:00:50 2019  
 Quant Method : Z:\SVOASRV\HPCHEM1\BNA E\METHODS\8270-SIM-BE040219.M  
 Quant Title : ASP BNA STANDARDS FOR 5 POINT CALIBRATION  
 QLast Update : Fri Apr 05 14:55:44 2019  
 Response via : Initial Calibration

Internal Standards	R.T.	QIon	Response	Conc	Units	Dev(Min)
1) 1,4-Dichlorobenzene-d4	7.82	152	3638	0.40	ng	0.00
7) Naphthalene-d8	10.61	136	13686	0.40	ng	0.00
13) Acenaphthene-d10	14.46	164	9318	0.40	ng	0.00
19) Phenanthrene-d10	17.19	188	27492	0.40	ng	0.00
27) Chrysene-d12	21.37	240	40238	0.40	ng	0.00
34) Perylene-d12	23.86	264	41557	0.40	ng	0.00

## System Monitoring Compounds

4) 2-Fluorophenol	5.39	112	3984	0.41	ng	0.00
5) Phenol-d6	6.98	99	5401	0.41	ng	0.00
8) Nitrobenzene-d5	8.97	82	4326	0.46	ng	0.00
11) 2-Methylnaphthalene-d10	12.20	152	10119	0.42	ng	0.00
14) 2,4,6-Tribromophenol	15.94	330	1684	0.39	ng	0.00
15) 2-Fluorobiphenyl	13.09	172	15966	0.44	ng	0.00
25) Fluoranthene-d10	19.22	212	151792	0.42	ng	0.00
29) Terphenyl-d14	19.82	244	31992	0.44	ng	0.00

## Target Compounds

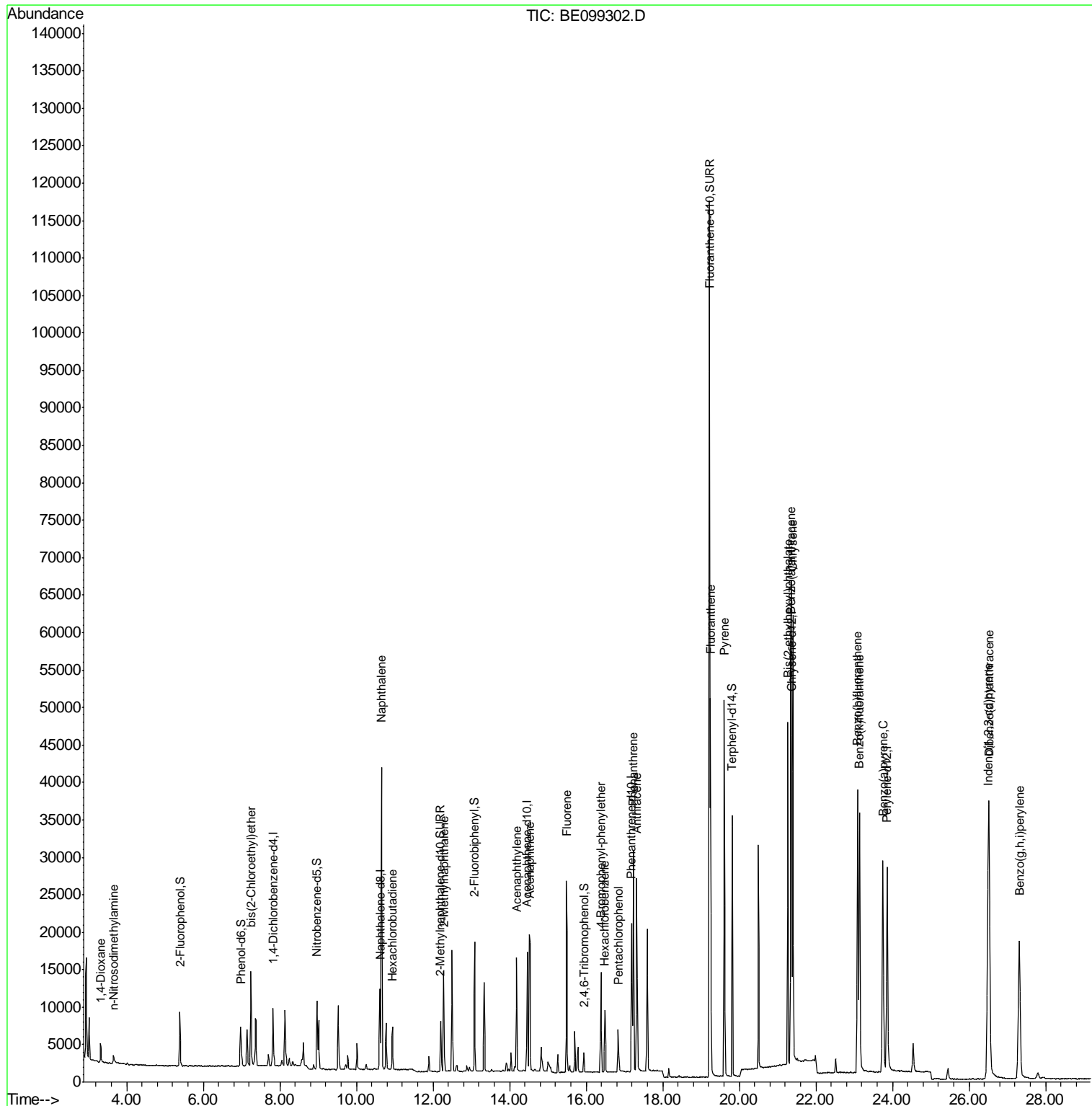
Target Compounds	R.T.	QIon	Response	Conc	Units	Qvalue
2) 1,4-Dioxane	3.32	88	2187	0.441	ng	100
3) n-Nitrosodimethylamine	3.65	42	996	0.340	ng	100
6) bis(2-Chloroethyl)ether	7.24	93	4905	0.412	ng	100
9) Naphthalene	10.65	128	63356	0.426	ng	100
10) Hexachlorobutadiene	10.94	225	4238	0.438	ng	100
12) 2-Methylnaphthalene	12.28	142	10623	0.419	ng	100
16) Acenaphthylene	14.18	152	17482	0.396	ng	100
17) Acenaphthene	14.53	154	11108	0.426	ng	100
18) Fluorene	15.49	166	15735	0.418	ng	100
20) 4-Bromophenyl-phenylether	16.38	248	6572	0.421	ng	100
21) Hexachlorobenzene	16.49	284	6539	0.440	ng	100
22) Pentachlorophenol	16.84	266	3120	0.506	ng	100
23) Phenanthrene	17.23	178	31665	0.445	ng	100
24) Anthracene	17.32	178	27326	0.407	ng	100
26) Fluoranthene	19.25	202	44796	0.427	ng	100
28) Pyrene	19.61	202	46115	0.434	ng	100
30) Benzo(a)anthracene	21.34	228	51823	0.409	ng	100
31) Chrysene	21.40	228	53004	0.427	ng	100
32) Bis(2-ethylhexyl)phthalate	21.27	149	49796	0.308	ng	100
33) Indeno(1,2,3-cd)pyrene	26.50	276	58461	0.412	ng	100
35) Benzo(b)fluoranthene	23.09	252	52095	0.420	ng	100
36) Benzo(k)fluoranthene	23.14	252	51827	0.429	ng	100
37) Benzo(a)pyrene	23.75	252	47734	0.410	ng	100
38) Dibenzo(a,h)anthracene	26.52	278	48727	0.420	ng	100
39) Benzo(g,h,i)perylene	27.31	276	47850	0.414	ng	100

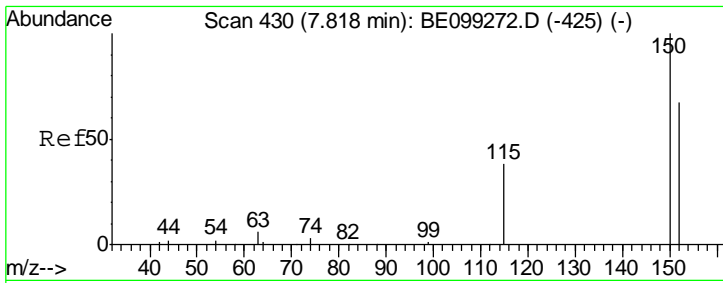
(#) = qualifier out of range (m) = manual integration (+) = signals summed

Data Path : Z:\SVOASRV\HPCHEM1\BNA E\DATA\BE040519\  
 Data File : BE099302.D  
 Acq On : 5 Apr 2019 10:18  
 Operator : JU/SJ  
 Sample : SSTDCCC0.4  
 Misc :  
 ALS Vial : 2 Sample Multiplier: 1

Instrument :  
 BNA\_E  
 ClientSampled :  
 SSTDCCC0.4

Quant Time: Apr 05 15:00:50 2019  
 Quant Method : Z:\SVOASRV\HPCHEM1\BNA E\METHODS\8270-SIM-BE040219.M  
 Quant Title : ASP BNA STANDARDS FOR 5 POINT CALIBRATION  
 QLast Update : Fri Apr 05 14:55:44 2019  
 Response via : Initial Calibration

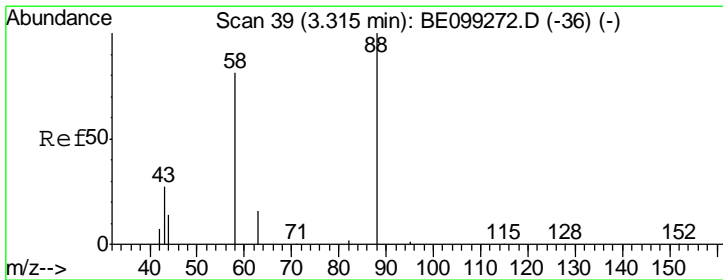
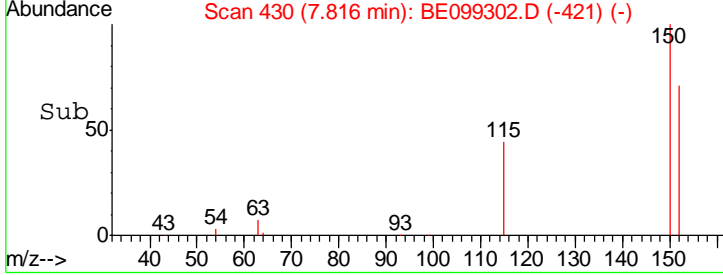
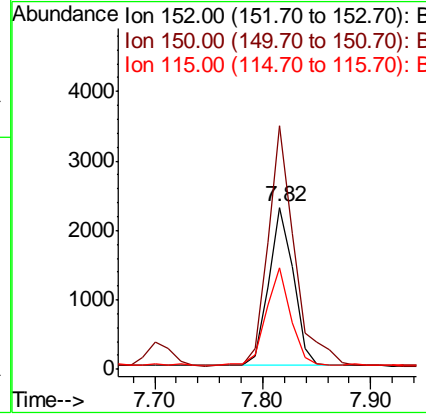
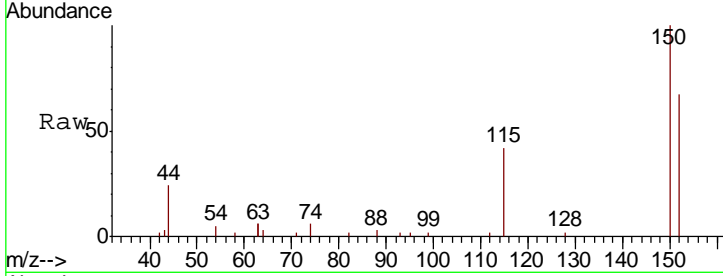




#1  
 1,4-Dichlorobenzene-d4  
 Concen: 0.400 ng  
 RT: 7.82 min Scan# 430  
 Delta R.T. 0.00 min  
 Lab File: BE099302.D  
 Acq: 5 Apr 2019 10:18

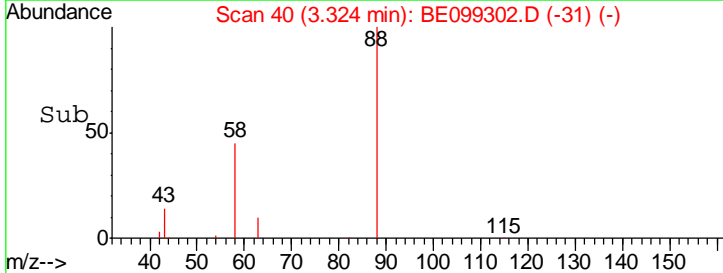
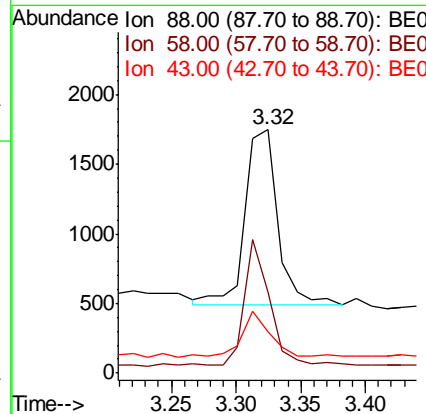
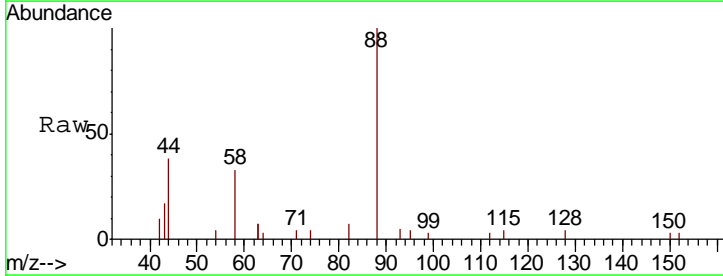
**Instrument :**  
 BNA\_E  
**ClientSampleId :**  
 SSTDCCC0.4

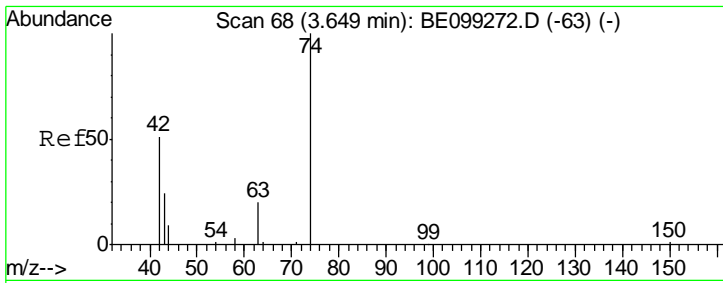
Tgt Ion	Resp	Lower	Upper
152	100		
150	150.2	120.2	180.2
115	62.7	50.2	75.2



#2  
 1,4-Dioxane  
 Concen: 0.441 ng  
 RT: 3.32 min Scan# 40  
 Delta R.T. 0.00 min  
 Lab File: BE099302.D  
 Acq: 5 Apr 2019 10:18

Tgt Ion	Resp	Lower	Upper
88	100		
58	55.0	43.8	65.8
43	23.3	18.6	28.0

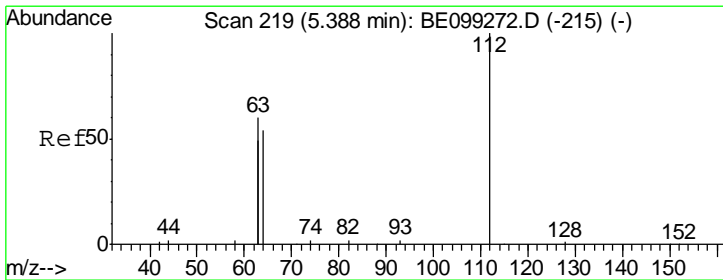
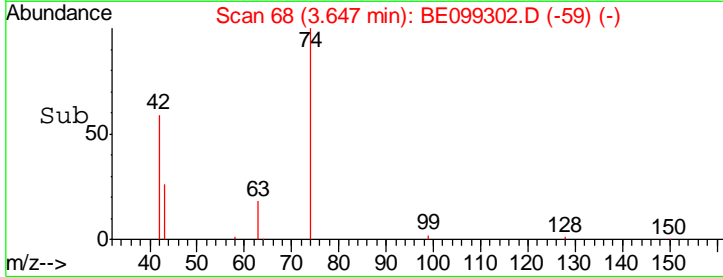
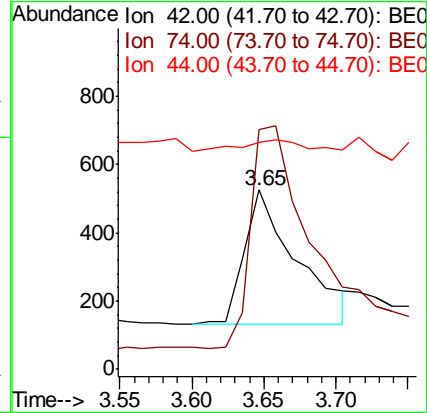
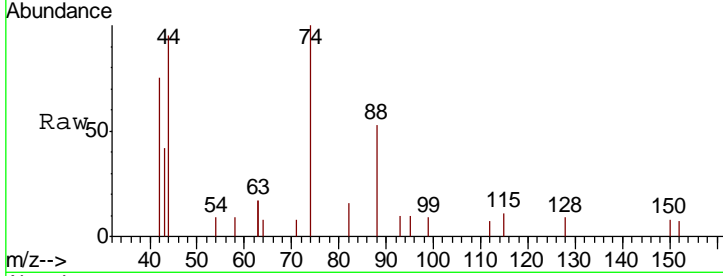




#3  
 n-Nitrosodimethylamine  
 Concen: 0.340 ng  
 RT: 3.65 min Scan# 68  
 Delta R.T. 0.00 min  
 Lab File: BE099302.D  
 Acq: 5 Apr 2019 10:18

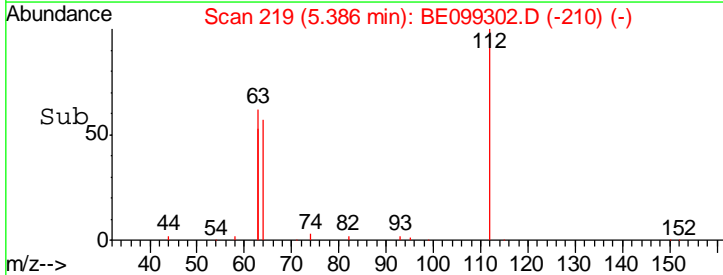
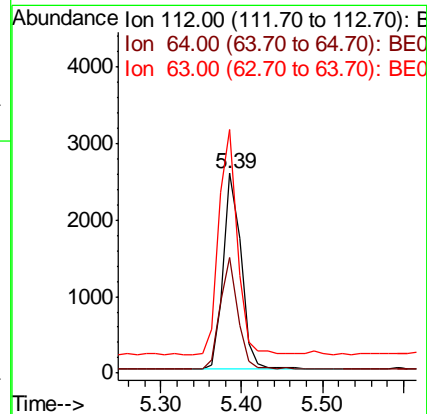
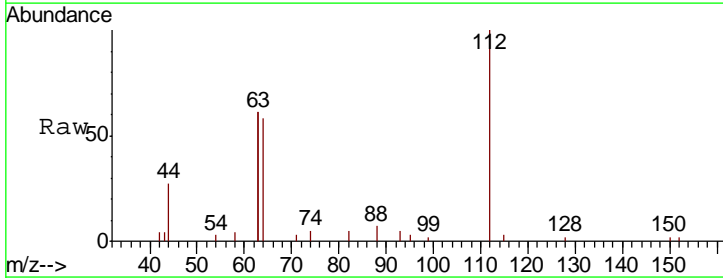
Instrument :  
 BNA\_E  
 ClientSampled :  
 SSTDCCC0.4

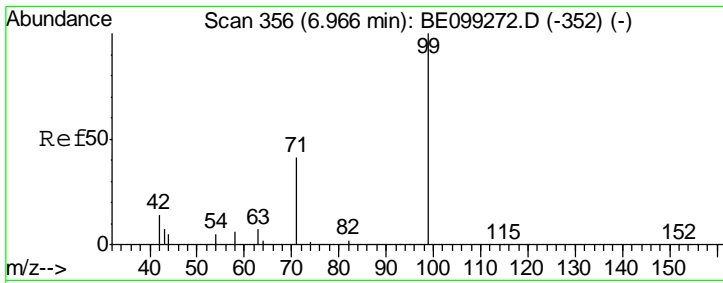
Tgt Ion	Resp	Lower	Upper
42	100		
74	178.2	142.6	214.0
44	5.4	4.1	6.1



#4  
 2-Fluorophenol  
 Concen: 0.412 ng  
 RT: 5.39 min Scan# 219  
 Delta R.T. 0.00 min  
 Lab File: BE099302.D  
 Acq: 5 Apr 2019 10:18

Tgt Ion	Resp	Lower	Upper
112	100		
64	56.0	44.8	67.2
63	118.5	94.8	142.2

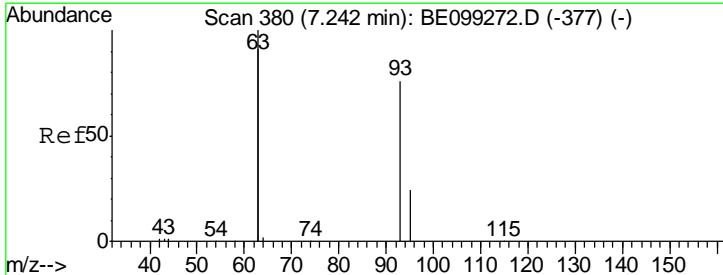
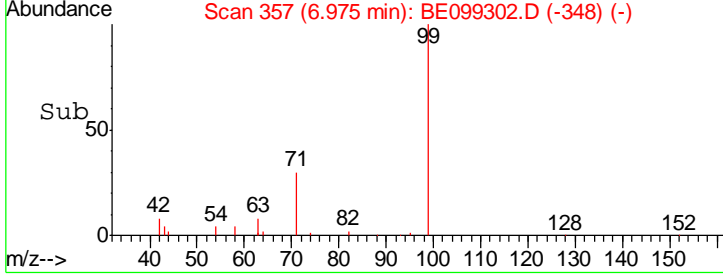
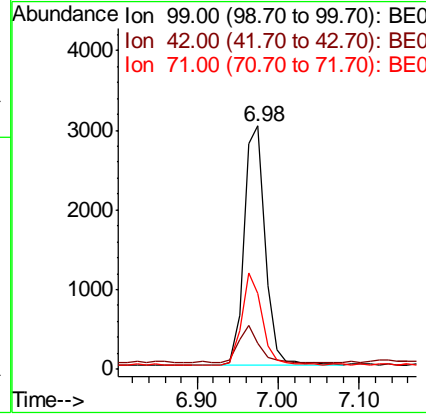
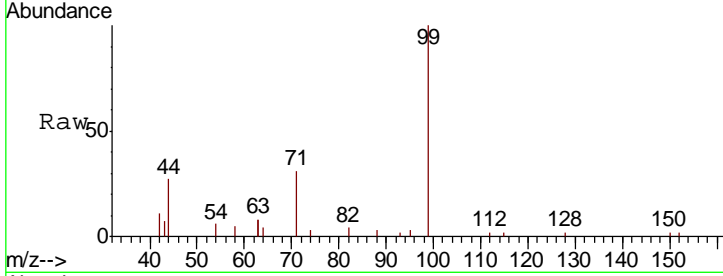




#5  
 Phenol-d6  
 Concen: 0.406 ng  
 RT: 6.98 min Scan# 357  
 Delta R.T. 0.00 min  
 Lab File: BE099302.D  
 Acq: 5 Apr 2019 10:18

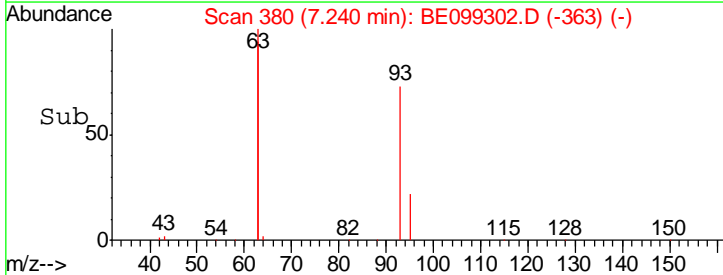
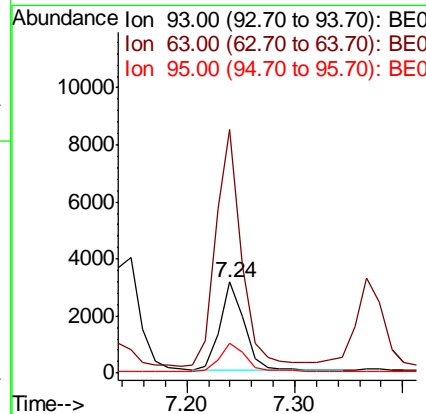
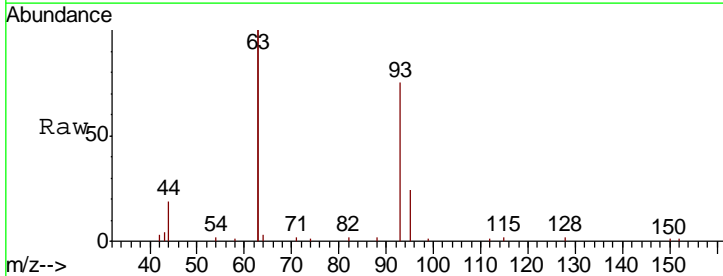
**Instrument :**  
 BNA\_E  
**ClientSampleId :**  
 SSTDCCC0.4

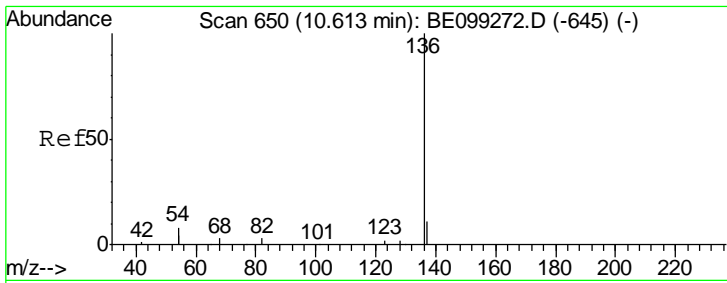
Tgt Ion	Resp	Lower	Upper
99	5401		
42	15.5	12.4	18.6
71	37.5	30.0	45.0



#6  
 bis(2-Chloroethyl)ether  
 Concen: 0.412 ng  
 RT: 7.24 min Scan# 380  
 Delta R.T. 0.00 min  
 Lab File: BE099302.D  
 Acq: 5 Apr 2019 10:18

Tgt Ion	Resp	Lower	Upper
93	4905		
63	278.3	222.6	334.0
95	32.5	26.0	39.0

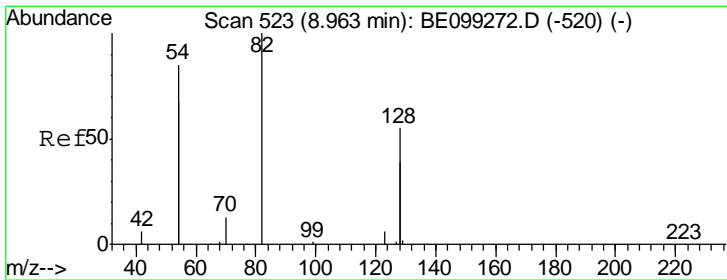
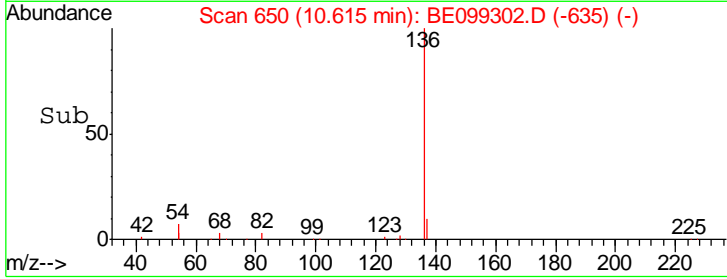
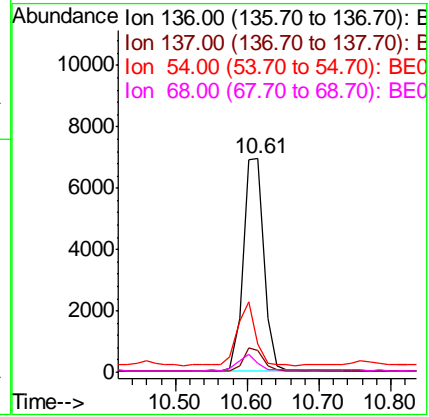
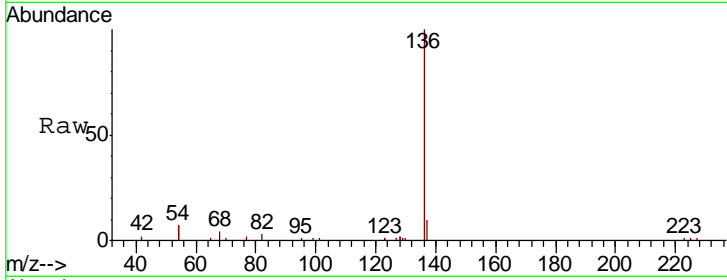




#7  
 Naphthalene-d8  
 Concen: 0.400 ng  
 RT: 10.61 min Scan# 650  
 Delta R.T. 0.00 min  
 Lab File: BE099302.D  
 Acq: 5 Apr 2019 10:18

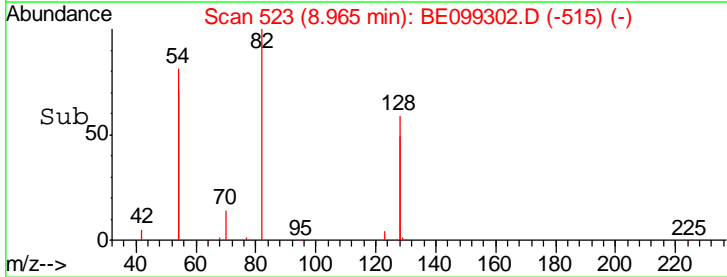
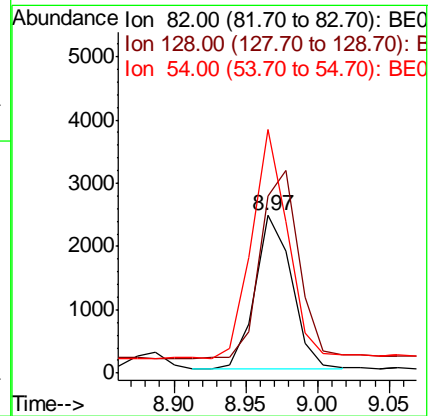
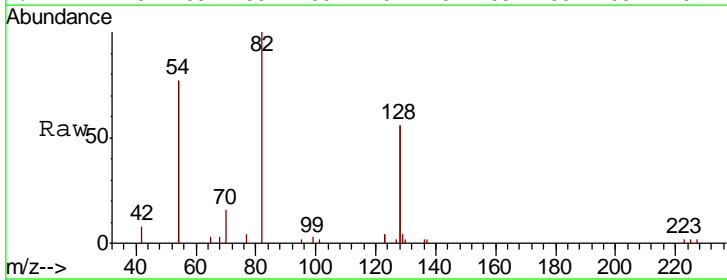
**Instrument :**  
 BNA\_E  
**ClientSampled :**  
 SSTDCCC0.4

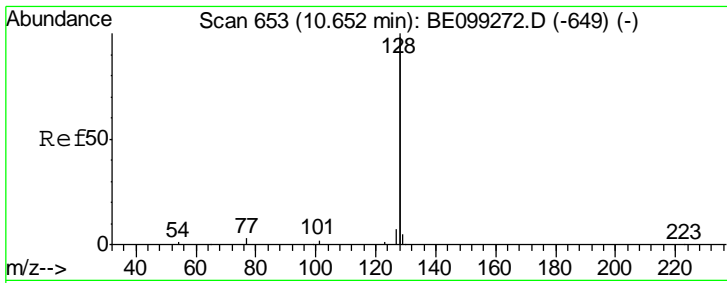
Tgt Ion	Resp	Lower	Upper
136	13686		
137	10.4	8.3	12.5
54	13.5	10.8	16.2
68	4.0	3.2	4.8



#8  
 Nitrobenzene-d5  
 Concen: 0.460 ng  
 RT: 8.97 min Scan# 523  
 Delta R.T. 0.00 min  
 Lab File: BE099302.D  
 Acq: 5 Apr 2019 10:18

Tgt Ion	Resp	Lower	Upper
82	4326		
128	112.6	90.1	135.1
54	154.5	123.6	185.4

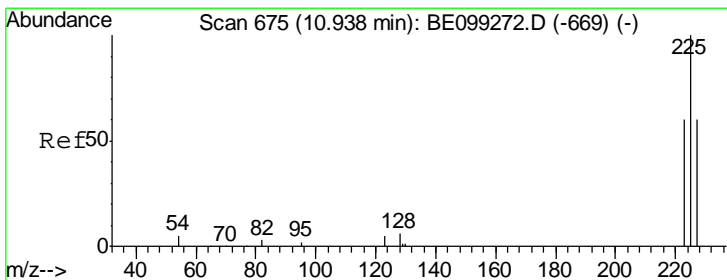
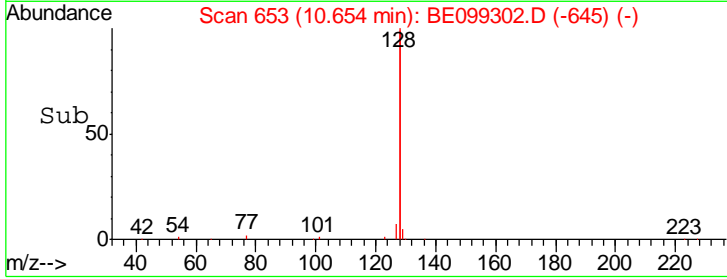
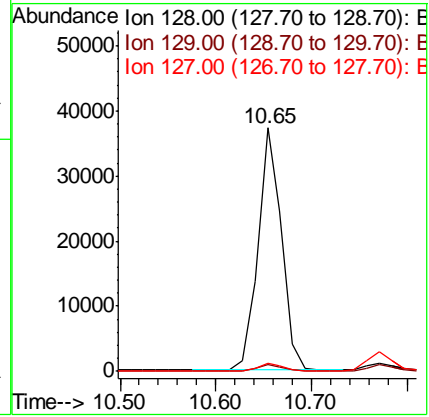
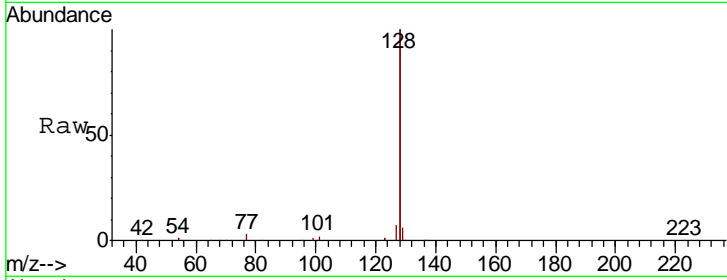




#9  
 Naphthalene  
 Concen: 0.426 ng  
 RT: 10.65 min Scan# 653  
 Delta R.T. 0.00 min  
 Lab File: BE099302.D  
 Acq: 5 Apr 2019 10:18

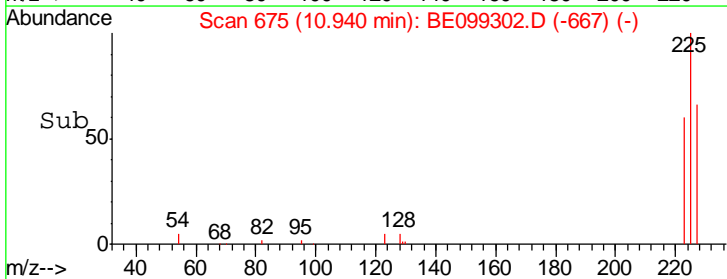
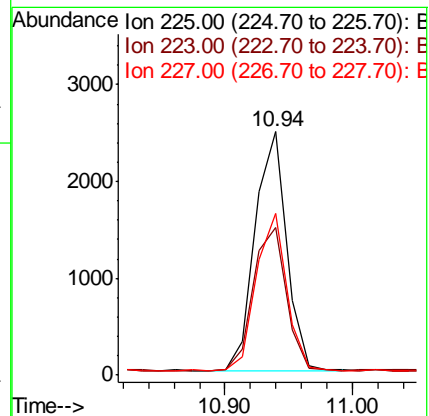
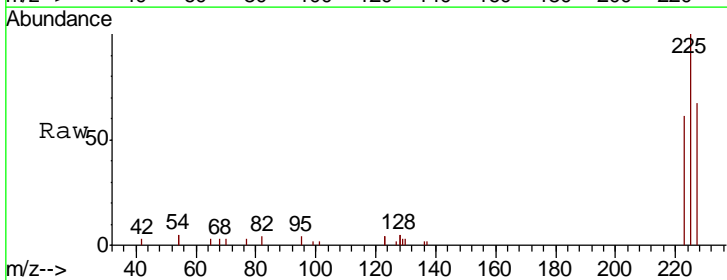
Instrument :  
 BNA\_E  
 ClientSampleId :  
 SSTDCCC0.4

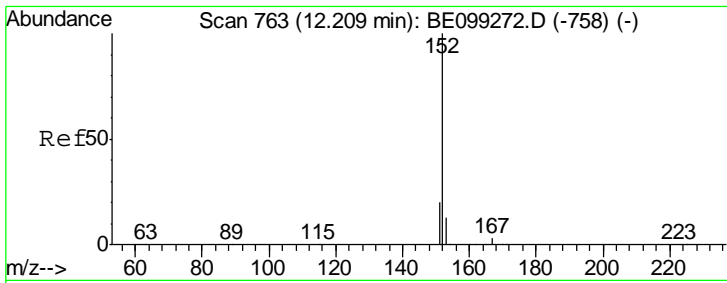
Tgt Ion	Resp	Lower	Upper
128	63356		
129	2.9	2.3	3.5
127	3.6	2.9	4.3



#10  
 Hexachlorobutadiene  
 Concen: 0.438 ng  
 RT: 10.94 min Scan# 675  
 Delta R.T. 0.00 min  
 Lab File: BE099302.D  
 Acq: 5 Apr 2019 10:18

Tgt Ion	Resp	Lower	Upper
225	4238		
223	62.1	49.7	74.5
227	63.6	50.9	76.3

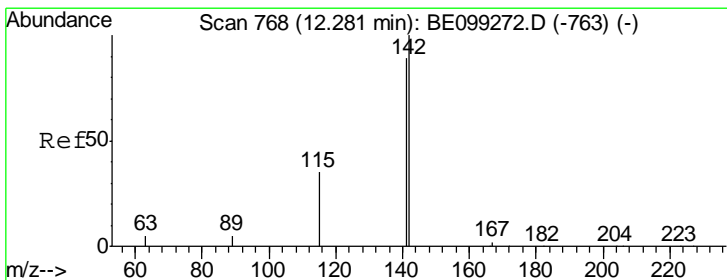
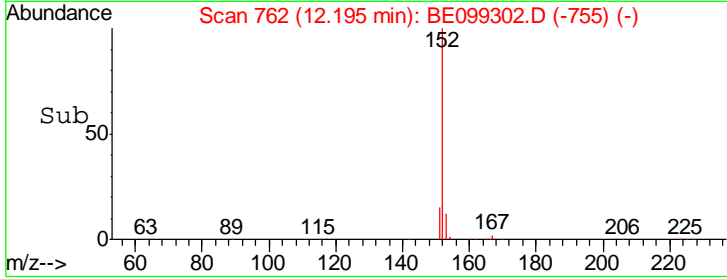
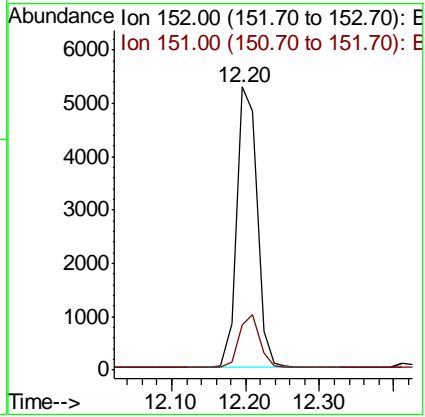
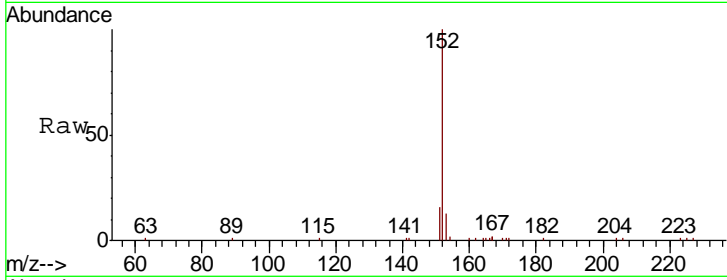




#11  
 2-Methylnaphthalene-d10  
 Concen: 0.424 ng  
 RT: 12.20 min Scan# 762  
 Delta R.T. 0.00 min  
 Lab File: BE099302.D  
 Acq: 5 Apr 2019 10:18

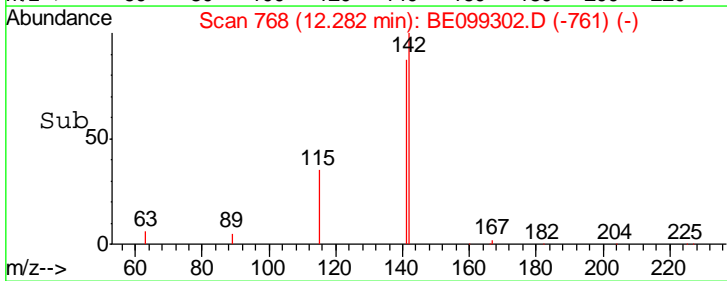
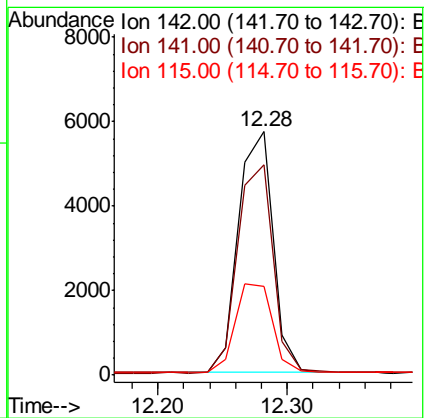
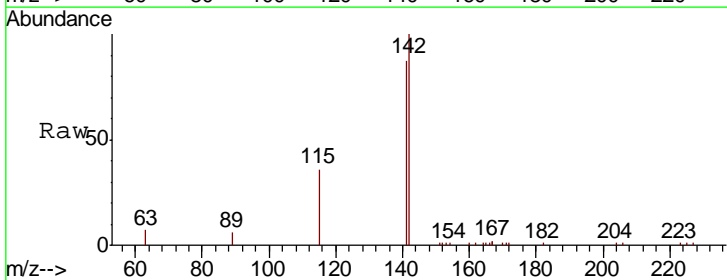
**Instrument :**  
 BNA\_E  
**ClientSampleId :**  
 SSTDCCC0.4

Tgt Ion:152 Resp: 10119  
 Ion Ratio Lower Upper  
 152 100  
 151 19.1 15.1 22.7

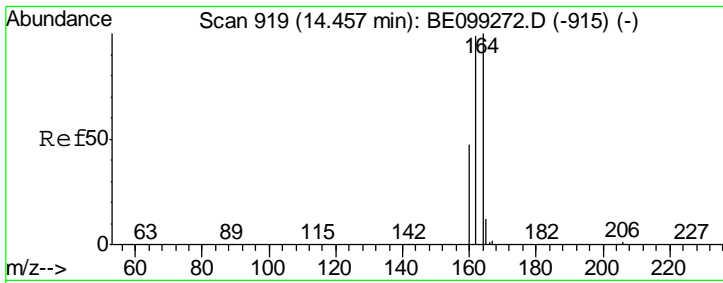


#12  
 2-Methylnaphthalene  
 Concen: 0.419 ng  
 RT: 12.28 min Scan# 768  
 Delta R.T. 0.00 min  
 Lab File: BE099302.D  
 Acq: 5 Apr 2019 10:18

Tgt Ion:142 Resp: 10623  
 Ion Ratio Lower Upper  
 142 100  
 141 86.6 69.3 103.9  
 115 36.4 29.1 43.7



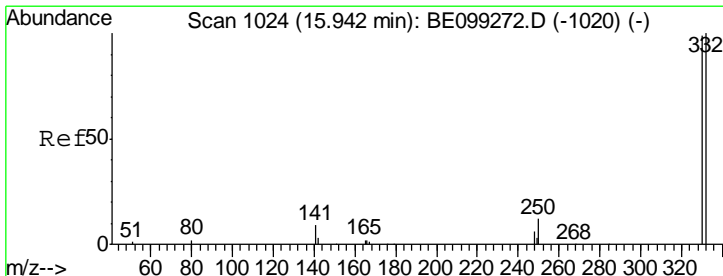
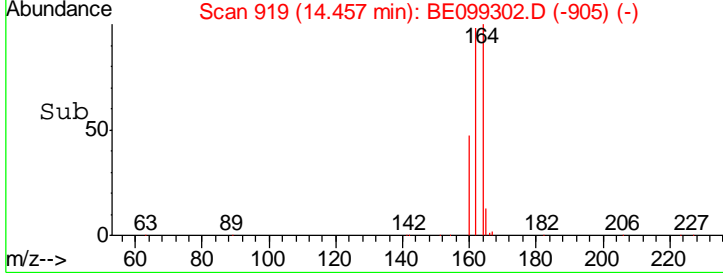
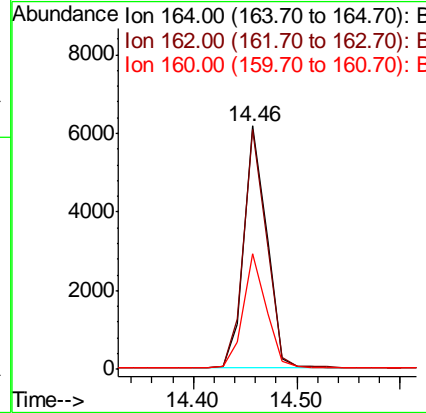
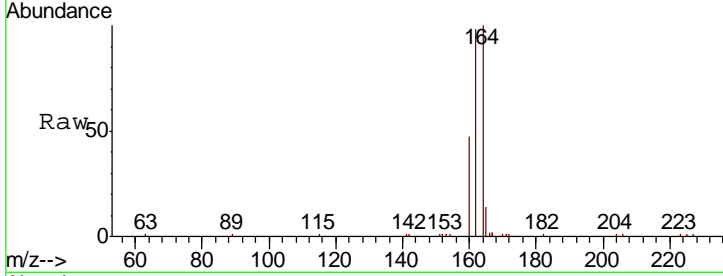




#13  
 Acenaphthene-d10  
 Concen: 0.400 ng  
 RT: 14.46 min Scan# 919  
 Delta R.T. 0.00 min  
 Lab File: BE099302.D  
 Acq: 5 Apr 2019 10:18

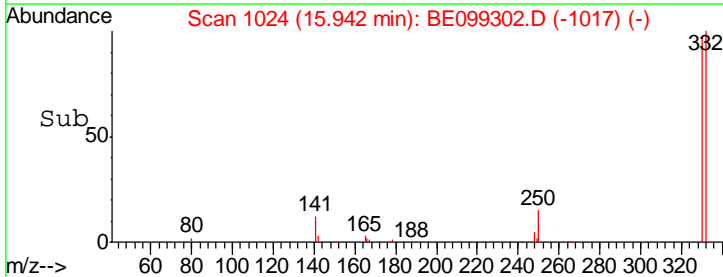
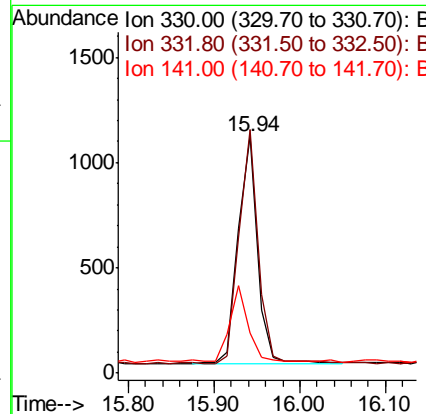
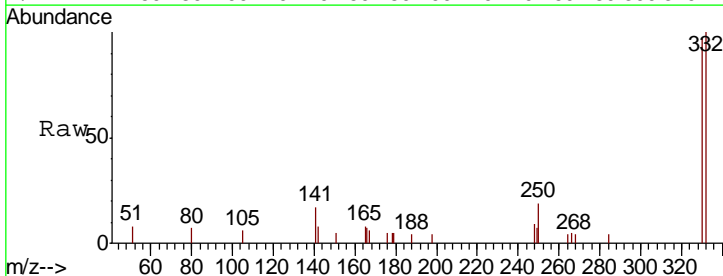
Instrument :  
 BNA\_E  
 ClientSampleId :  
 SSTDCCC0.4

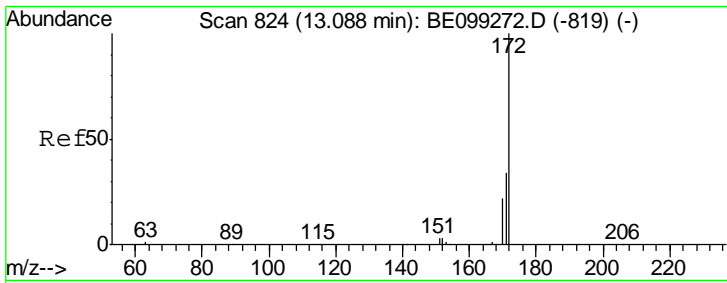
Tgt Ion	Resp	Lower	Upper
164	9318		
162	98.4	78.7	118.1
160	47.3	37.8	56.8



#14  
 2,4,6-Tribromophenol  
 Concen: 0.392 ng  
 RT: 15.94 min Scan# 1024  
 Delta R.T. 0.00 min  
 Lab File: BE099302.D  
 Acq: 5 Apr 2019 10:18

Tgt Ion	Resp	Lower	Upper
330	1684		
332	103.2	82.0	123.0
141	31.7	25.4	38.2

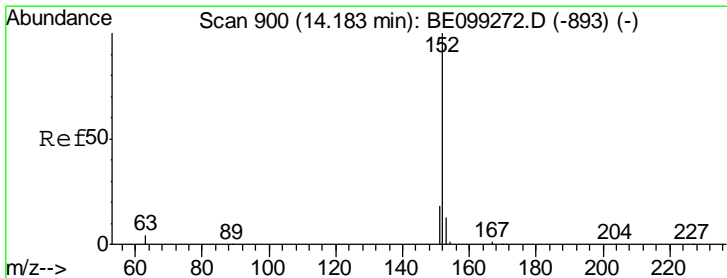
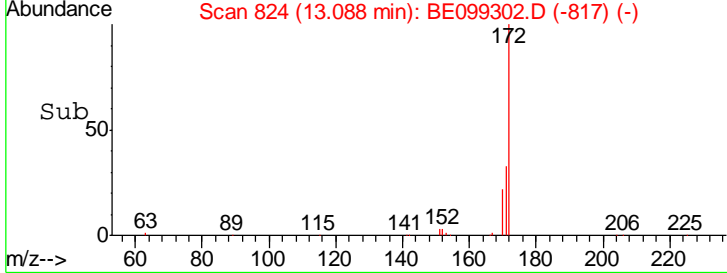
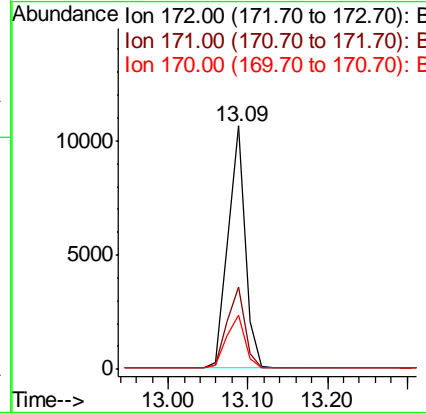
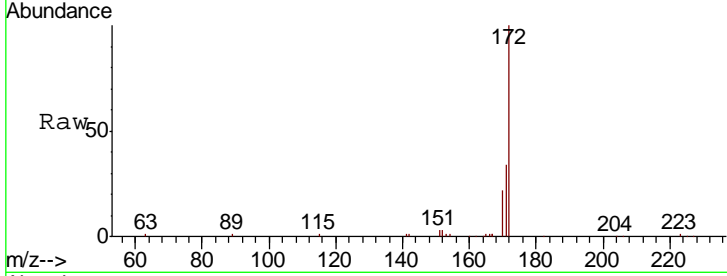




#15  
 2-Fluorobiphenyl  
 Concen: 0.436 ng  
 RT: 13.09 min Scan# 824  
 Delta R.T. 0.00 min  
 Lab File: BE099302.D  
 Acq: 5 Apr 2019 10:18

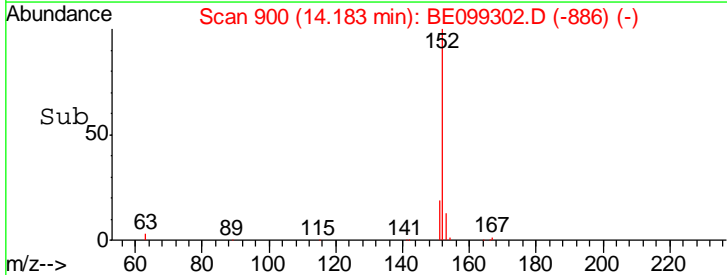
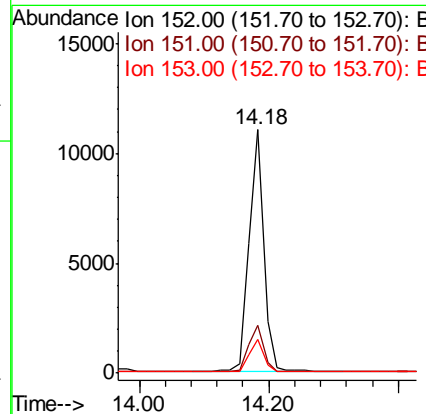
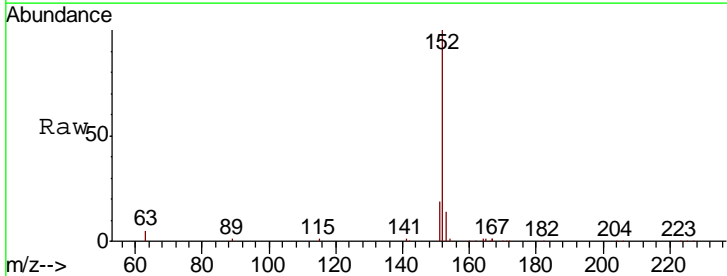
Instrument :  
 BNA\_E  
 ClientSampleId :  
 SSTDCCC0.4

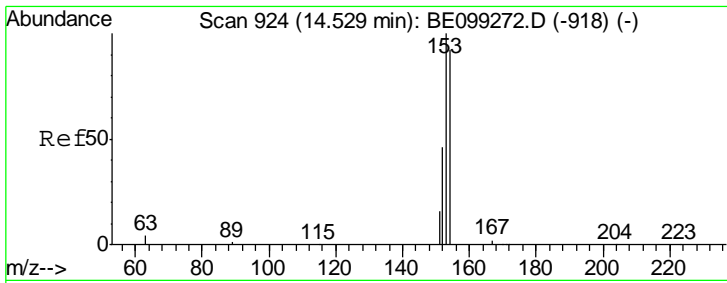
Tgt Ion	Resp	Lower	Upper
172	15966		
171	33.7	27.0	40.4
170	22.2	17.8	26.6



#16  
 Acenaphthylene  
 Concen: 0.396 ng  
 RT: 14.18 min Scan# 900  
 Delta R.T. 0.00 min  
 Lab File: BE099302.D  
 Acq: 5 Apr 2019 10:18

Tgt Ion	Resp	Lower	Upper
152	17482		
151	19.1	15.3	22.9
153	13.5	10.8	16.2

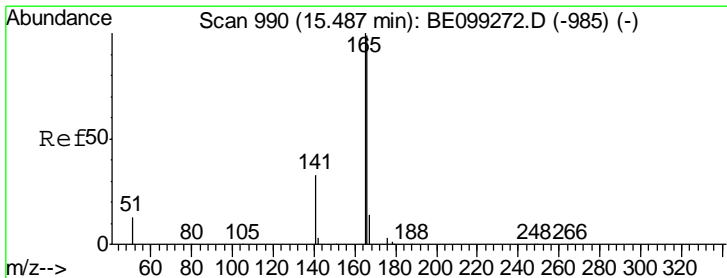
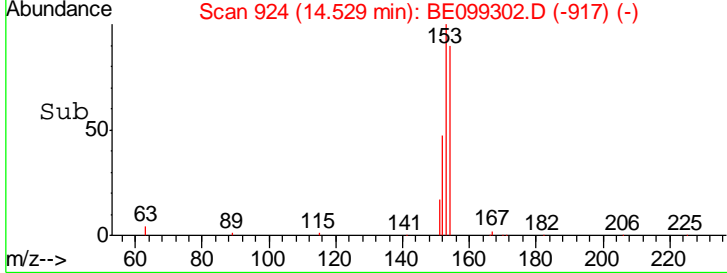
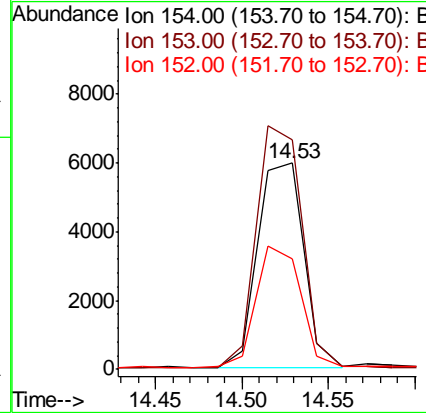
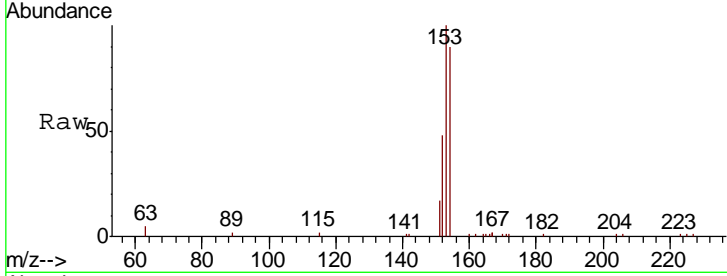




#17  
 Acenaphthene  
 Concen: 0.426 ng  
 RT: 14.53 min Scan# 924  
 Delta R.T. 0.00 min  
 Lab File: BE099302.D  
 Acq: 5 Apr 2019 10:18

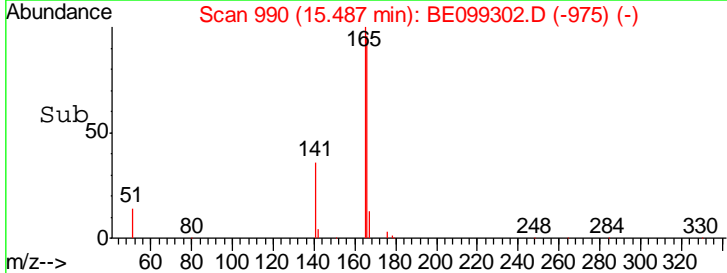
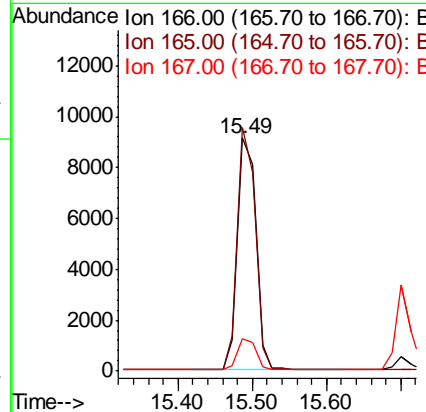
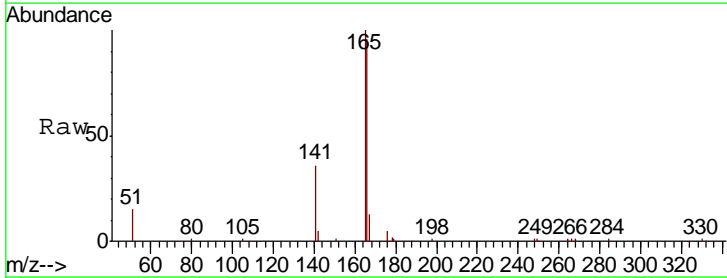
Instrument :  
 BNA\_E  
 ClientSampleId :  
 SSTDCCC0.4

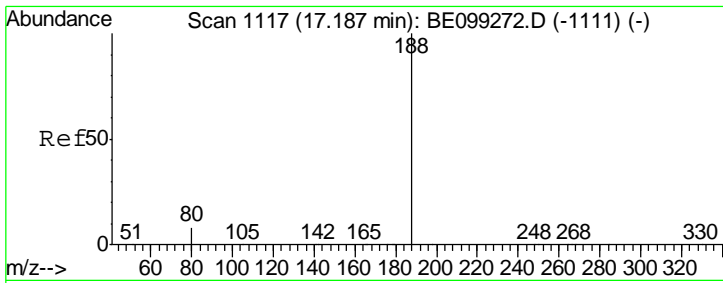
Tgt Ion	Resp	Lower	Upper
154	100		
153	116.5	93.3	139.9
152	57.3	45.6	68.4



#18  
 Fluorene  
 Concen: 0.418 ng  
 RT: 15.49 min Scan# 990  
 Delta R.T. 0.00 min  
 Lab File: BE099302.D  
 Acq: 5 Apr 2019 10:18

Tgt Ion	Resp	Lower	Upper
166	100		
165	100.7	80.6	120.8
167	13.4	10.7	16.1

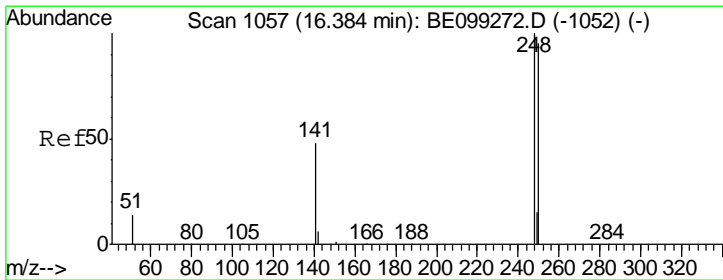
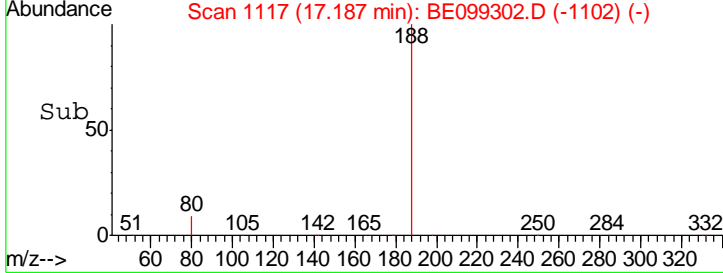
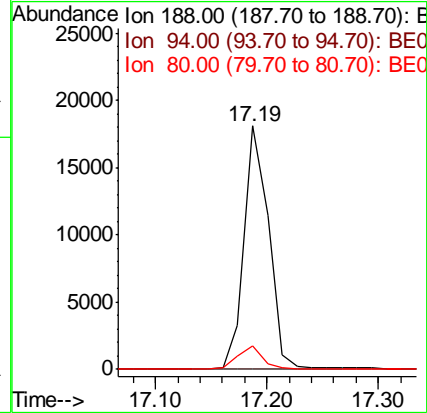
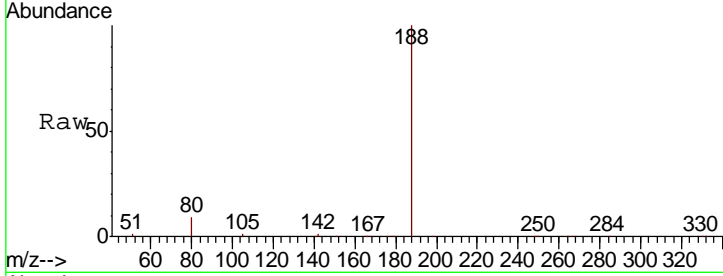




#19  
 Phenanthrene-d10  
 Concen: 0.400 ng  
 RT: 17.19 min Scan# 1117  
 Delta R.T. 0.00 min  
 Lab File: BE099302.D  
 Acq: 5 Apr 2019 10:18

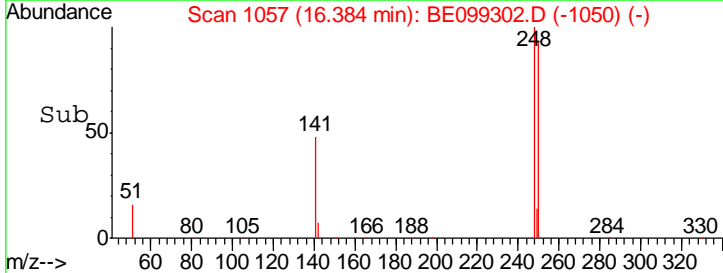
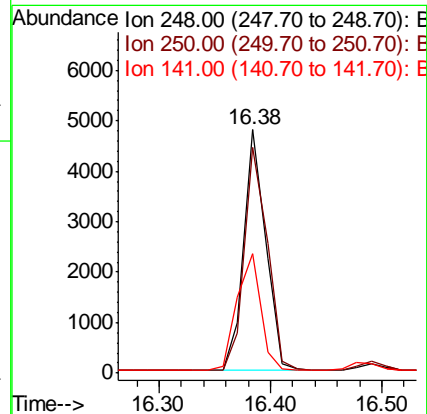
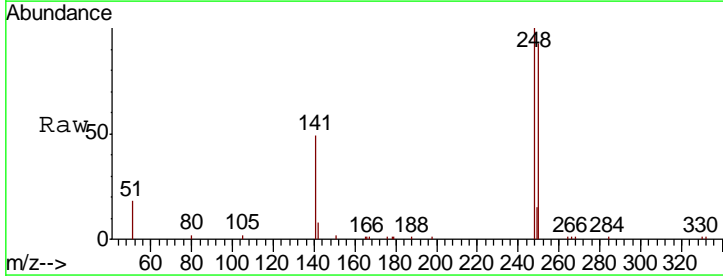
Instrument :  
 BNA\_E  
 ClientSampleId :  
 SSTDCCC0.4

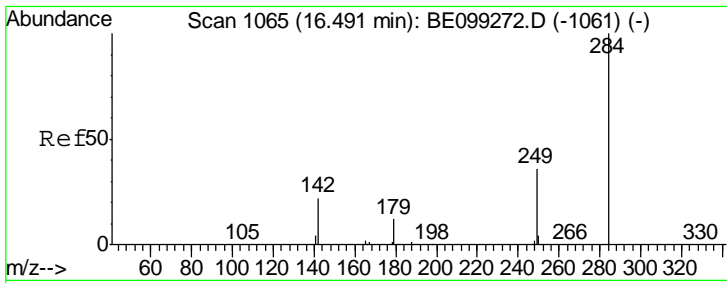
Tgt Ion	Resp	Lower	Upper
188	100		
94	0.0	0.0	0.0
80	9.4	7.5	11.3



#20  
 4-Bromophenyl-phenylether  
 Concen: 0.421 ng  
 RT: 16.38 min Scan# 1057  
 Delta R.T. 0.00 min  
 Lab File: BE099302.D  
 Acq: 5 Apr 2019 10:18

Tgt Ion	Resp	Lower	Upper
248	100		
250	92.9	74.3	111.5
141	48.9	39.1	58.7

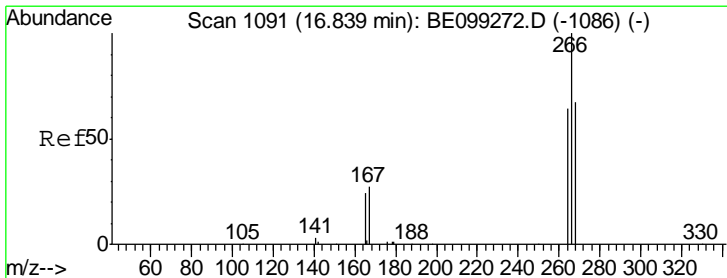
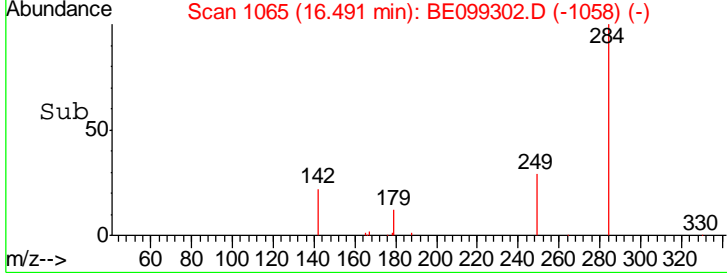
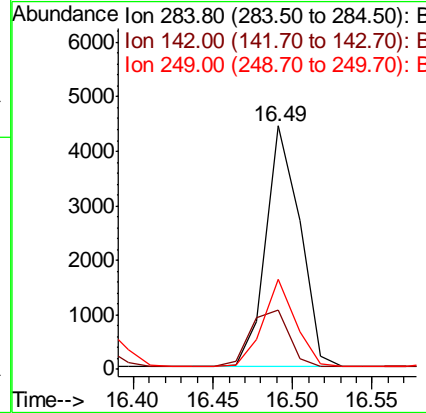
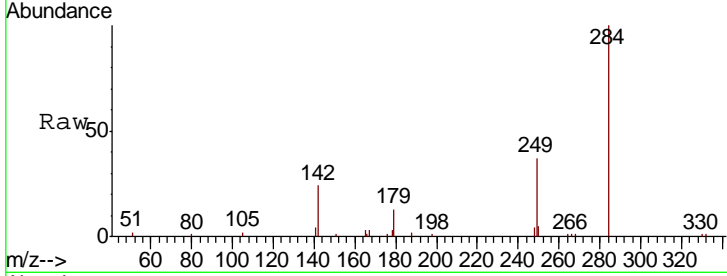




#21  
 Hexachlorobenzene  
 Concen: 0.440 ng  
 RT: 16.49 min Scan# 1065  
 Delta R.T. 0.00 min  
 Lab File: BE099302.D  
 Acq: 5 Apr 2019 10:18

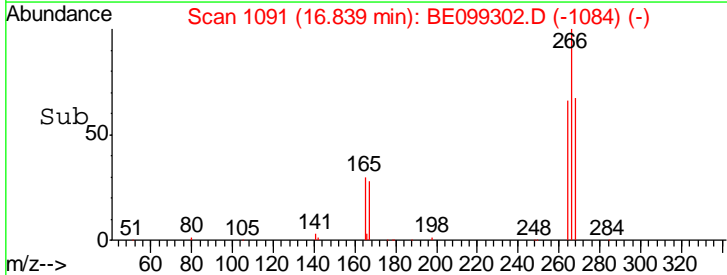
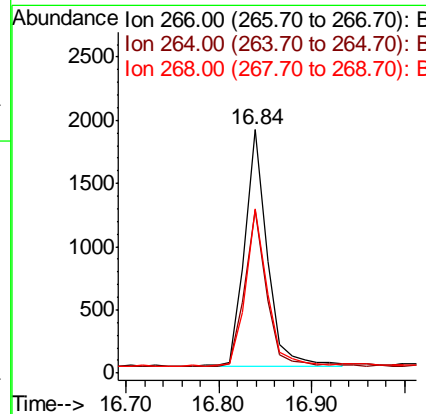
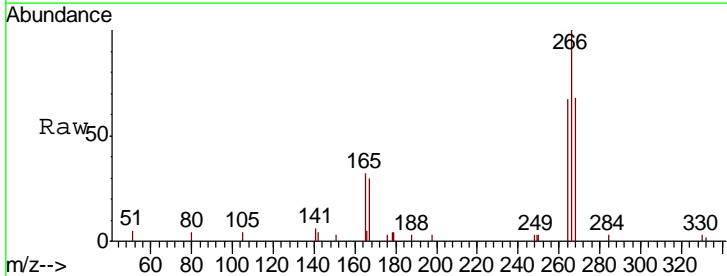
Instrument : BNA\_E  
 ClientSampleId : SSTDCCC0.4

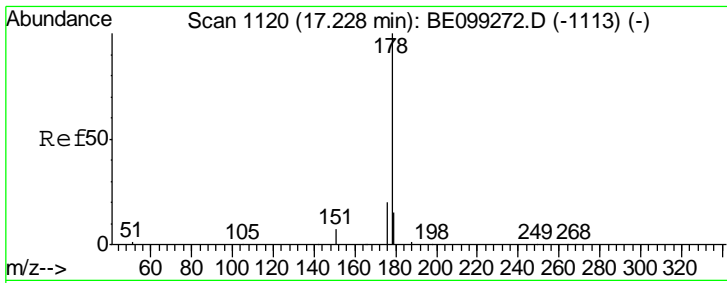
Tgt Ion	Resp	Lower	Upper
284	6539		
142	26.5	21.2	31.8
249	34.3	27.4	41.2



#22  
 Pentachlorophenol  
 Concen: 0.506 ng  
 RT: 16.84 min Scan# 1091  
 Delta R.T. 0.00 min  
 Lab File: BE099302.D  
 Acq: 5 Apr 2019 10:18

Tgt Ion	Resp	Lower	Upper
266	3120		
264	67.0	53.6	80.4
268	67.7	54.2	81.2

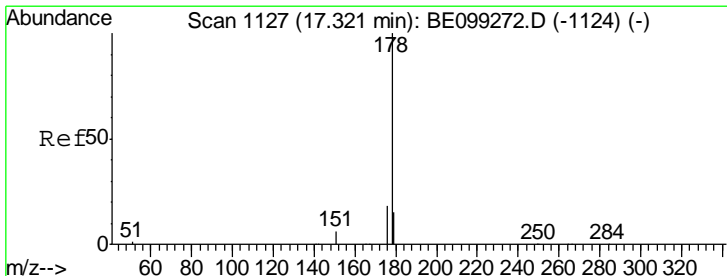
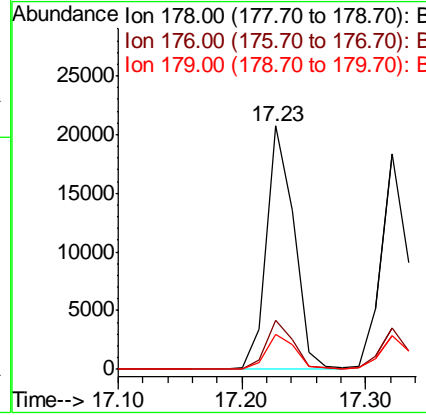
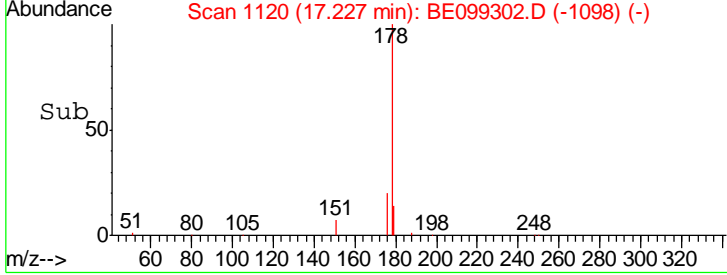
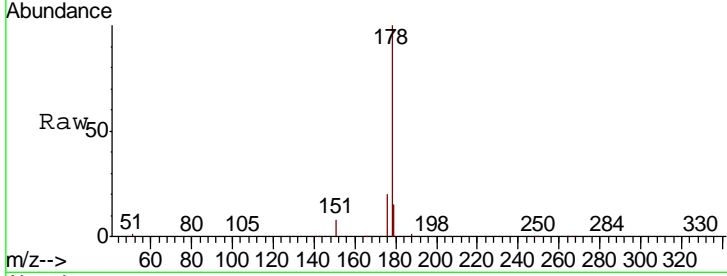




#23  
 Phenanthrene  
 Concen: 0.445 ng  
 RT: 17.23 min Scan# 1120  
 Delta R.T. 0.00 min  
 Lab File: BE099302.D  
 Acq: 5 Apr 2019 10:18

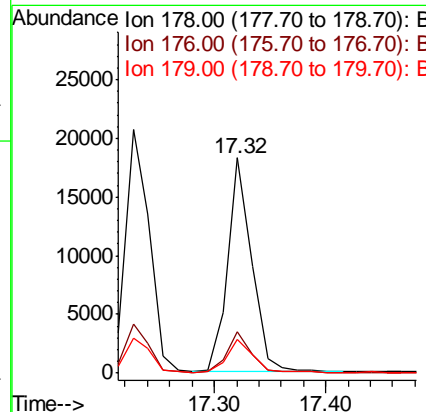
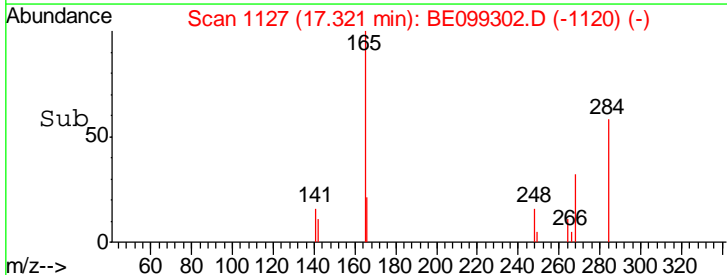
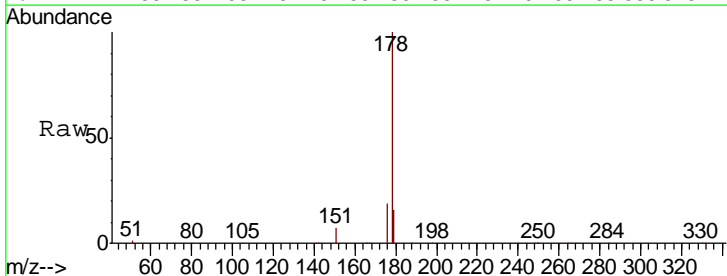
Instrument :  
 BNA\_E  
 ClientSampleId :  
 SSTDCCC0.4

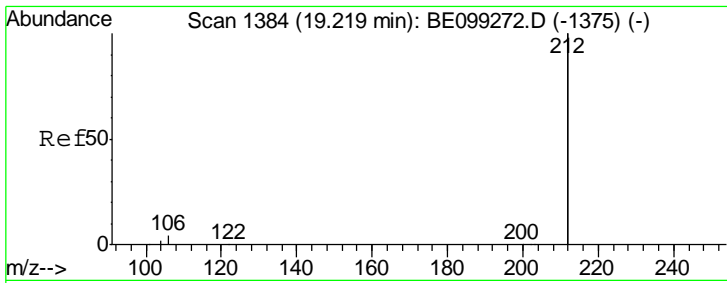
Tgt Ion	Resp	Lower	Upper
178	31665		
176	19.2	15.4	23.0
179	14.8	11.8	17.8



#24  
 Anthracene  
 Concen: 0.407 ng  
 RT: 17.32 min Scan# 1127  
 Delta R.T. 0.00 min  
 Lab File: BE099302.D  
 Acq: 5 Apr 2019 10:18

Tgt Ion	Resp	Lower	Upper
178	27326		
176	18.4	14.6	22.0
179	15.4	12.3	18.5

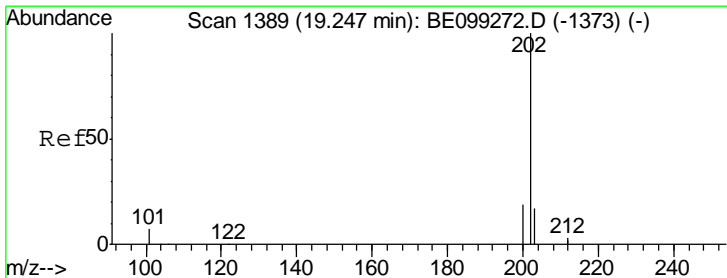
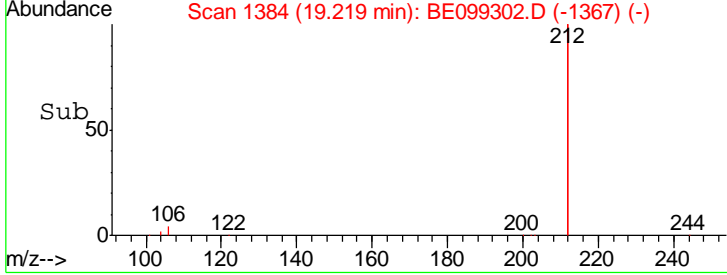
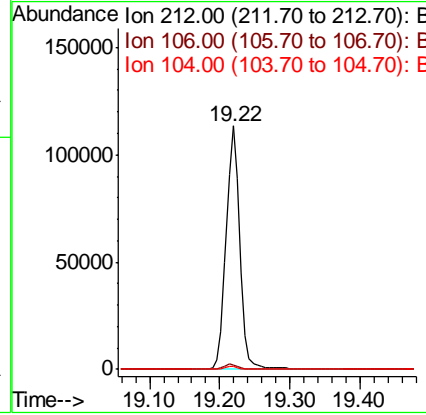
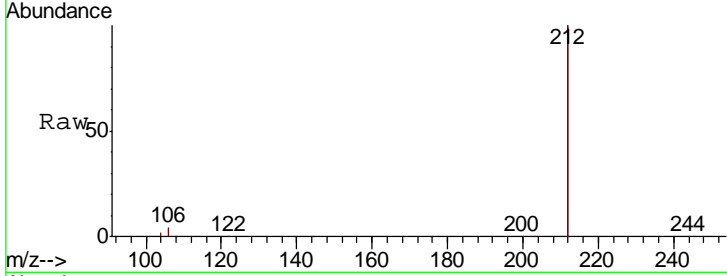




#25  
 Fluoranthene-d10  
 Concen: 0.418 ng  
 RT: 19.22 min Scan# 1384  
 Delta R.T. 0.00 min  
 Lab File: BE099302.D  
 Acq: 5 Apr 2019 10:18

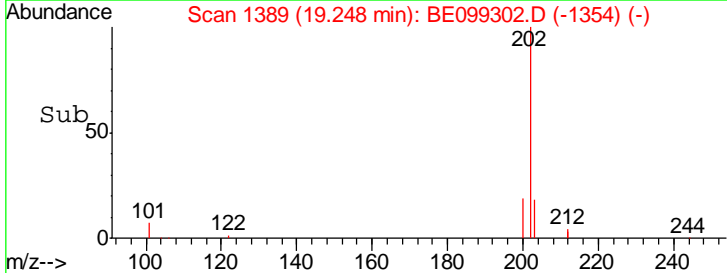
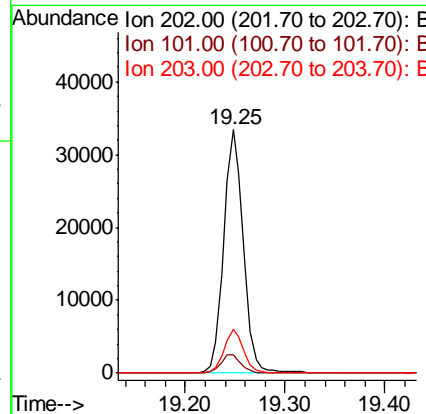
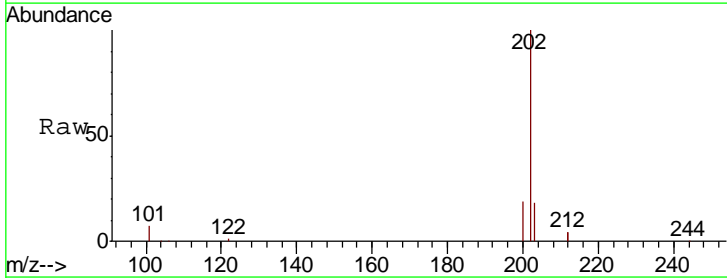
Instrument :  
 BNA\_E  
 ClientSampleId :  
 SSTDCCC0.4

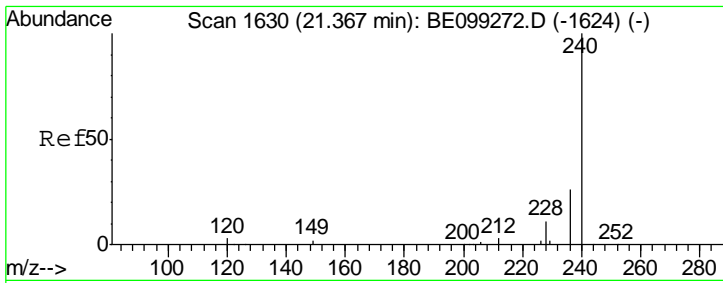
Tgt Ion	Resp	Lower	Upper
212	151792		
106	2.1	1.7	2.5
104	1.2	1.0	1.4



#26  
 Fluoranthene  
 Concen: 0.427 ng  
 RT: 19.25 min Scan# 1389  
 Delta R.T. 0.00 min  
 Lab File: BE099302.D  
 Acq: 5 Apr 2019 10:18

Tgt Ion	Resp	Lower	Upper
202	44796		
101	7.6	6.1	9.1
203	17.2	13.8	20.6

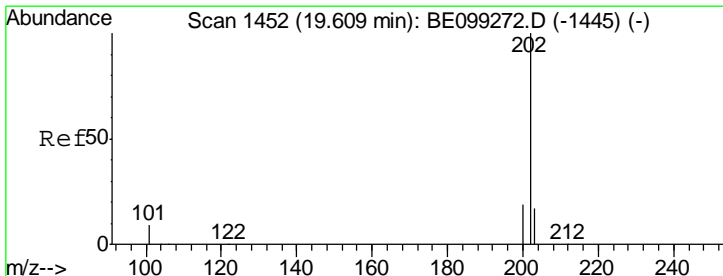
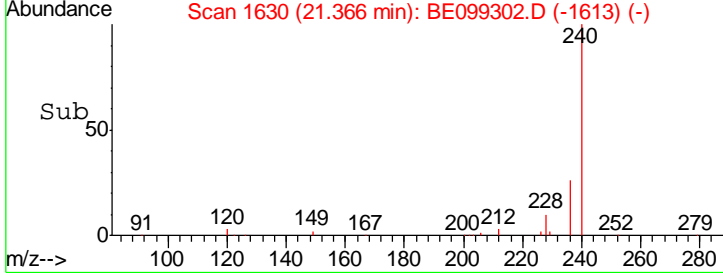
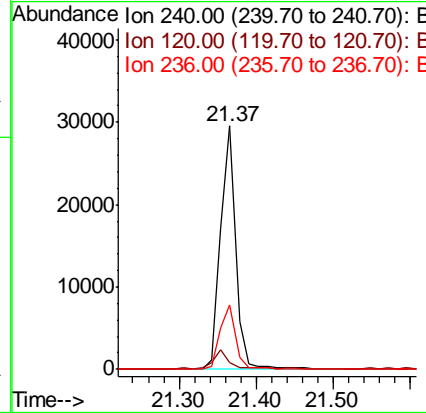
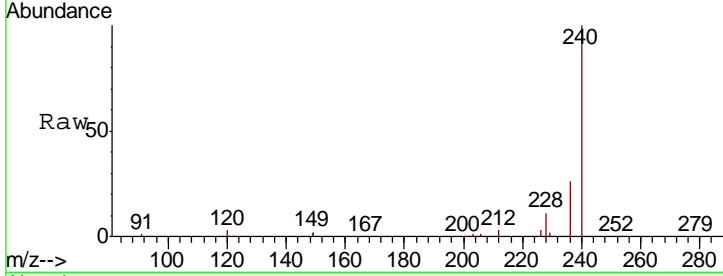




#27  
 Chrysene-d12  
 Concen: 0.400 ng  
 RT: 21.37 min Scan# 1630  
 Delta R.T. 0.00 min  
 Lab File: BE099302.D  
 Acq: 5 Apr 2019 10:18

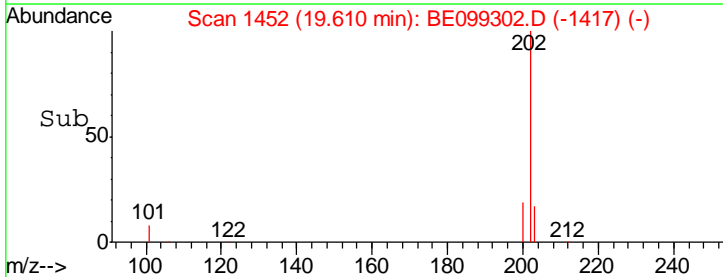
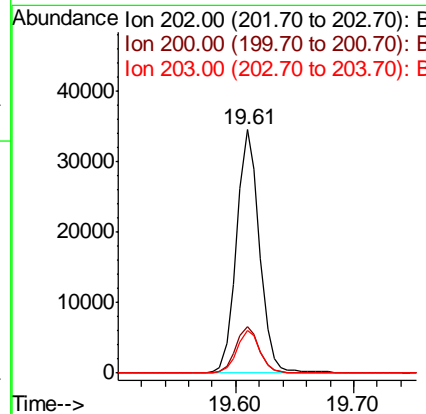
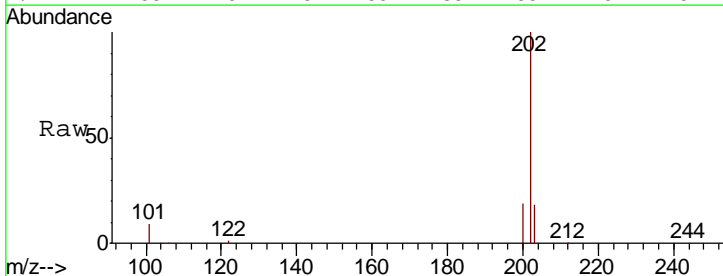
Instrument :  
 BNA\_E  
 ClientSampled :  
 SSTDCCC0.4

Tgt Ion	Resp	Lower	Upper
240	40238		
120	2.9	2.3	3.5
236	26.3	21.0	31.6

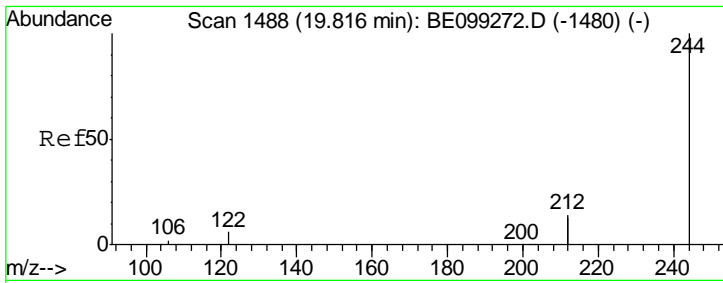


#28  
 Pyrene  
 Concen: 0.434 ng  
 RT: 19.61 min Scan# 1452  
 Delta R.T. 0.00 min  
 Lab File: BE099302.D  
 Acq: 5 Apr 2019 10:18

Tgt Ion	Resp	Lower	Upper
202	46115		
200	19.4	15.5	23.3
203	17.5	14.0	21.0



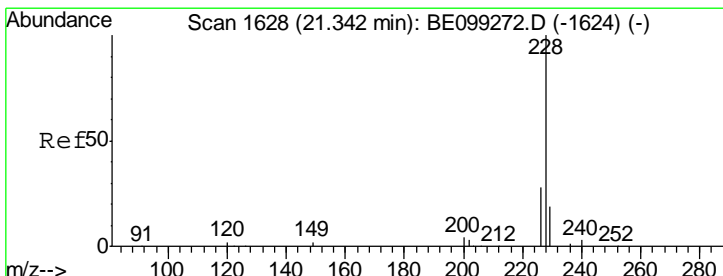
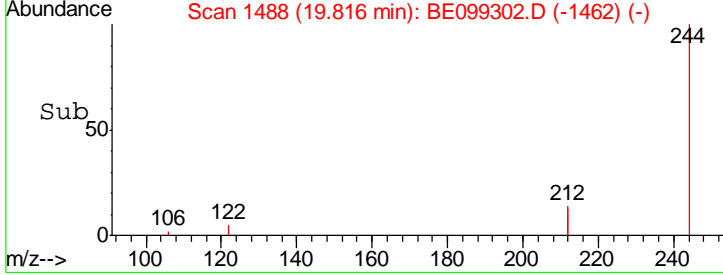
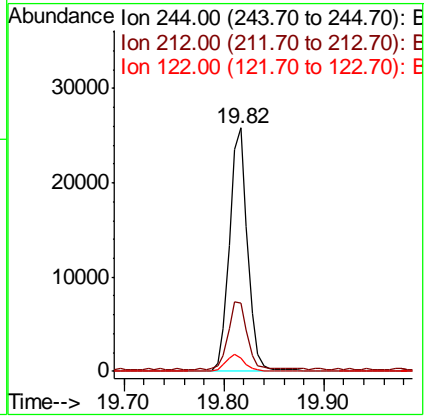
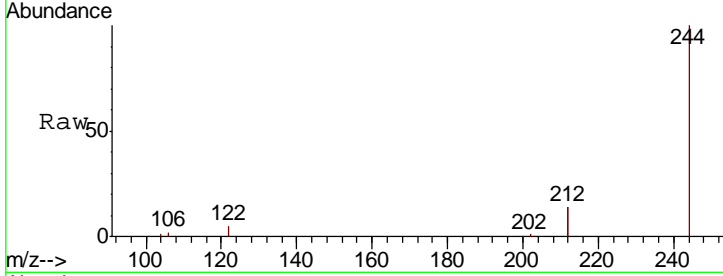




#29  
 Terphenyl-d14  
 Concen: 0.436 ng  
 RT: 19.82 min Scan# 1488  
 Delta R.T. 0.00 min  
 Lab File: BE099302.D  
 Acq: 5 Apr 2019 10:18

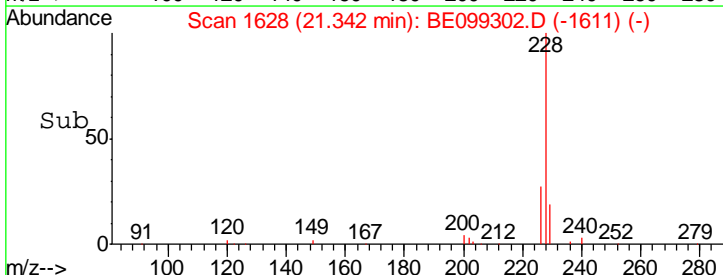
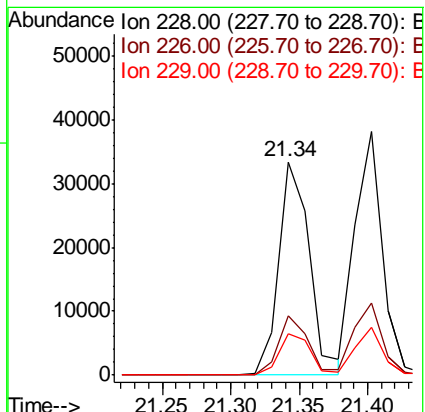
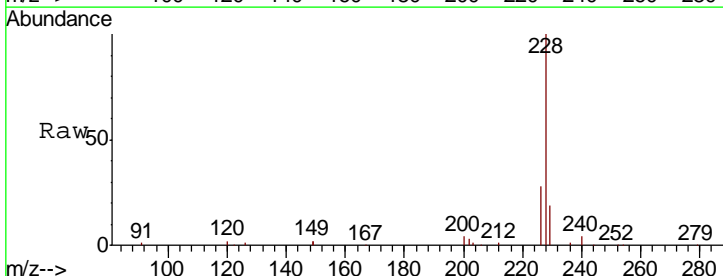
Instrument : BNA\_E  
 ClientSampled : SSTDCCC0.4

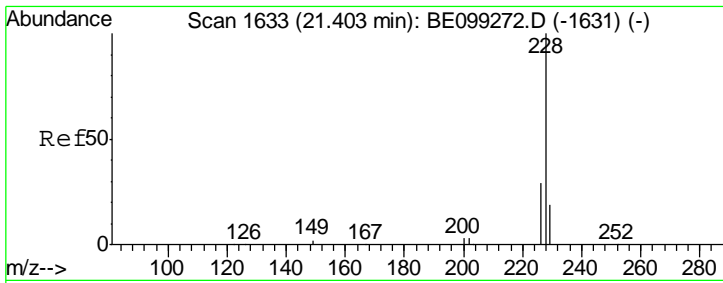
Tgt Ion	Resp	Lower	Upper
244	31992		
212	28.0	22.4	33.6
122	5.5	4.4	6.6



#30  
 Benzo(a)anthracene  
 Concen: 0.409 ng  
 RT: 21.34 min Scan# 1628  
 Delta R.T. 0.00 min  
 Lab File: BE099302.D  
 Acq: 5 Apr 2019 10:18

Tgt Ion	Resp	Lower	Upper
228	51823		
226	27.6	22.1	33.1
229	19.2	15.4	23.0

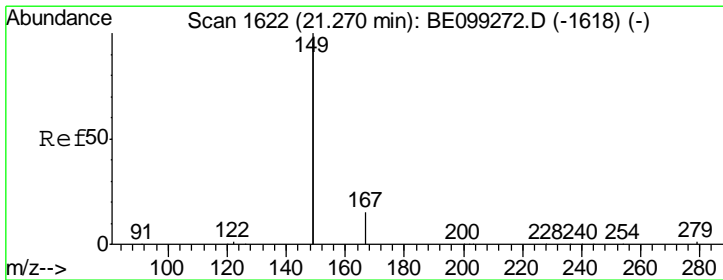
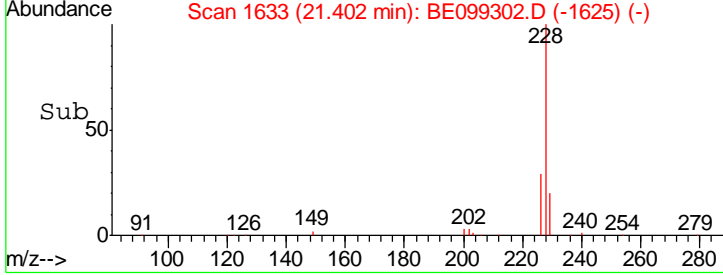
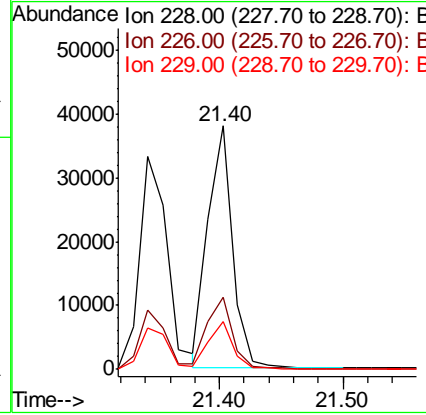
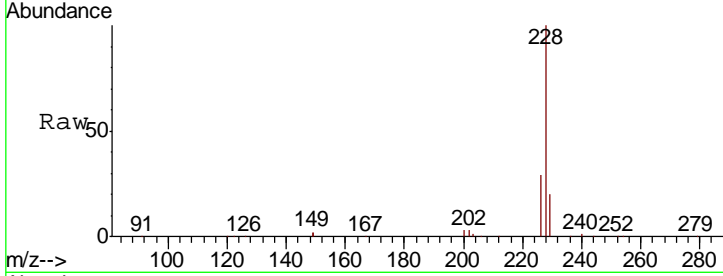




#31  
 Chrysene  
 Concen: 0.427 ng  
 RT: 21.40 min Scan# 1633  
 Delta R.T. 0.00 min  
 Lab File: BE099302.D  
 Acq: 5 Apr 2019 10:18

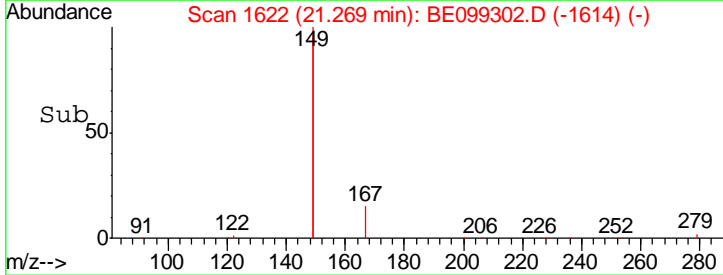
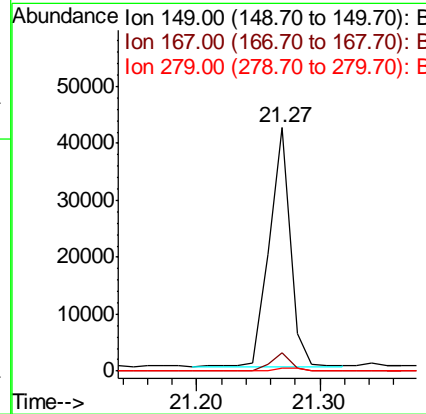
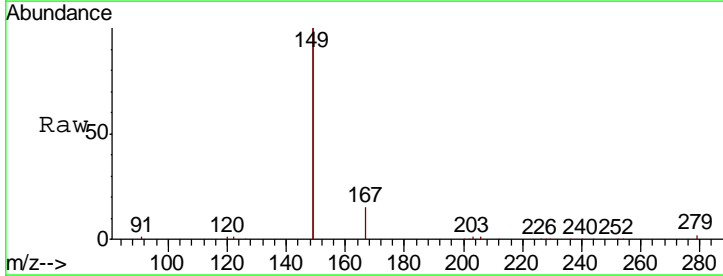
Instrument :  
 BNA\_E  
 ClientSampleId :  
 SSTDCCC0.4

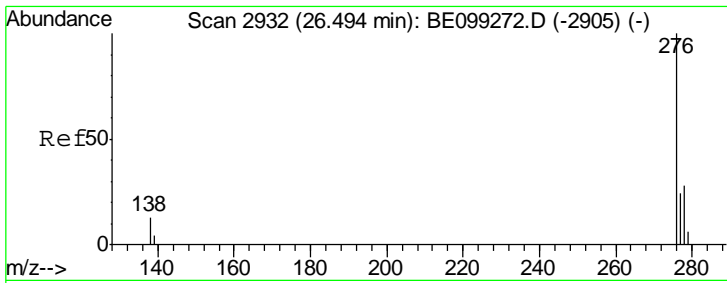
Tgt Ion	Resp	Lower	Upper
228	53004		
226	29.5	23.6	35.4
229	19.8	15.8	23.8



#32  
 Bis(2-ethylhexyl)phthalate  
 Concen: 0.308 ng  
 RT: 21.27 min Scan# 1622  
 Delta R.T. 0.00 min  
 Lab File: BE099302.D  
 Acq: 5 Apr 2019 10:18

Tgt Ion	Resp	Lower	Upper
149	49796		
167	7.2	5.8	8.6
279	1.3	1.0	1.6

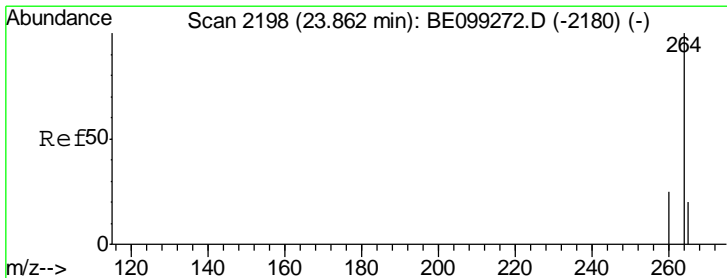
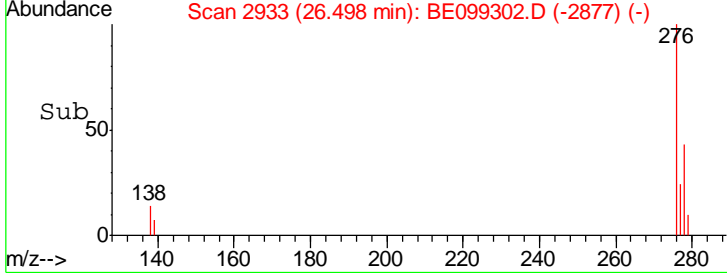
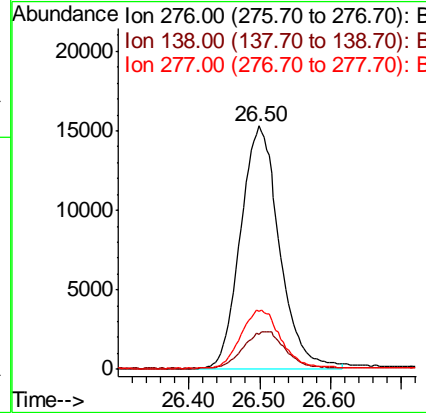
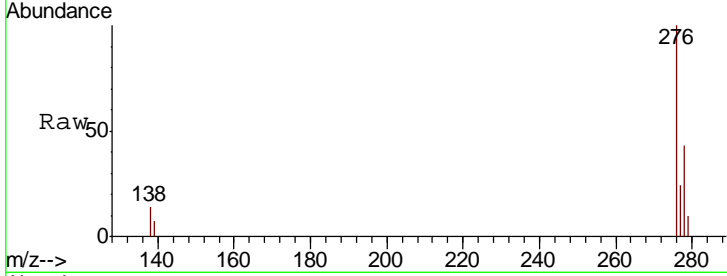




#33  
 Indeno(1,2,3-cd)pyrene  
 Concen: 0.412 ng  
 RT: 26.50 min Scan# 2933  
 Delta R.T. 0.00 min  
 Lab File: BE099302.D  
 Acq: 5 Apr 2019 10:18

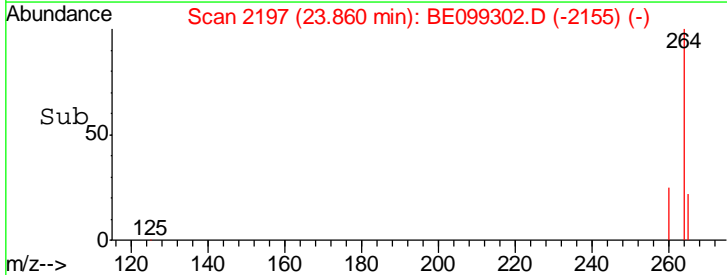
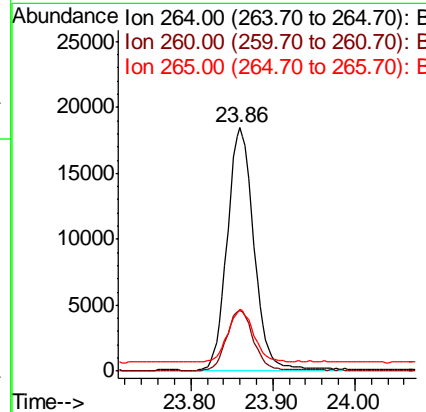
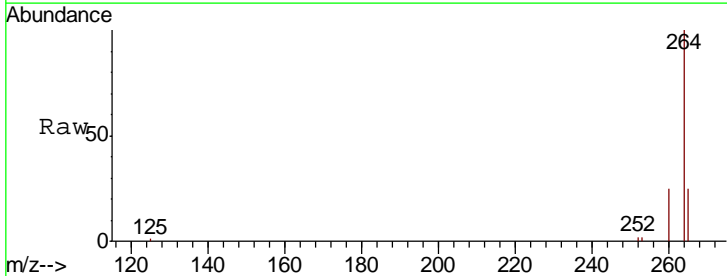
Instrument : BNA\_E  
 ClientSampleId : SSTDCCC0.4

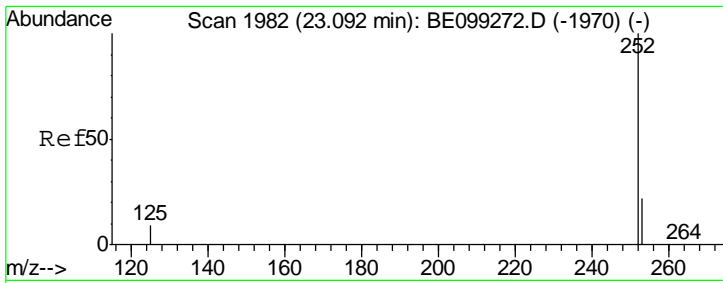
Tgt Ion	Resp	Lower	Upper
276	58461		
138	16.6	13.3	19.9
277	24.8	19.8	29.8



#34  
 Perylene-d12  
 Concen: 0.400 ng  
 RT: 23.86 min Scan# 2197  
 Delta R.T. 0.00 min  
 Lab File: BE099302.D  
 Acq: 5 Apr 2019 10:18

Tgt Ion	Resp	Lower	Upper
264	41557		
260	24.9	19.9	29.9
265	25.4	20.3	30.5



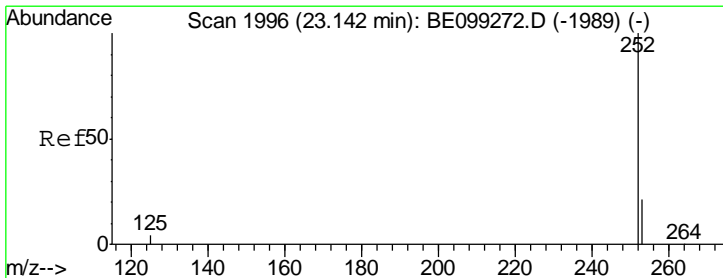
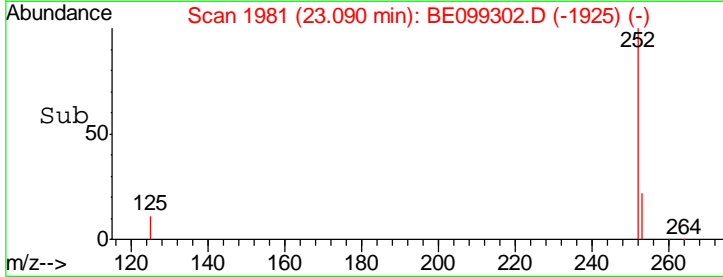
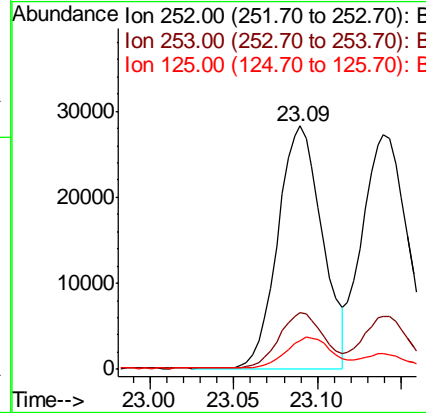
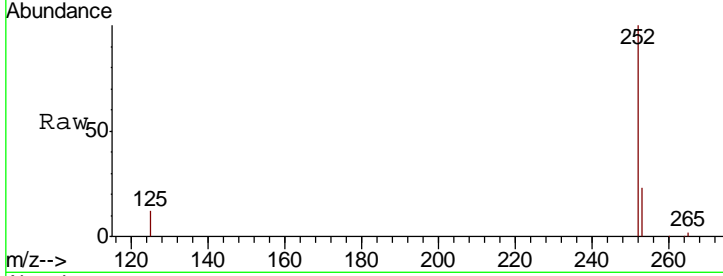


#35  
 Benzo(b)fluoranthene  
 Concen: 0.420 ng  
 RT: 23.09 min Scan# 1981  
 Delta R.T. 0.00 min  
 Lab File: BE099302.D  
 Acq: 5 Apr 2019 10:18

Instrument :  
 BNA\_E  
 ClientSampleId :  
 SSTDCCC0.4

Tgt Ion: 252 Resp: 52095

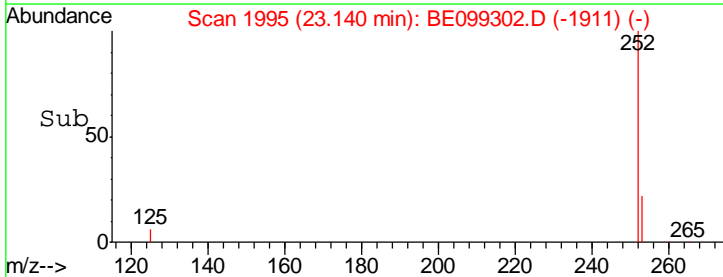
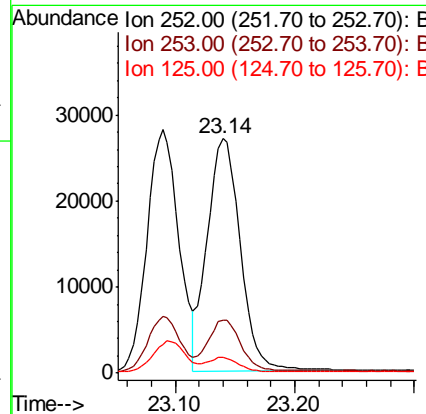
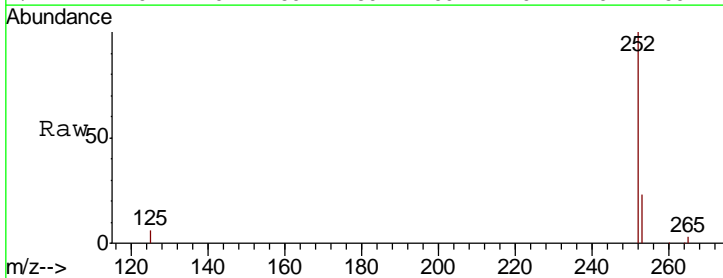
Ion	Ratio	Lower	Upper
252	100		
253	23.1	18.5	27.7
125	11.8	9.4	14.2

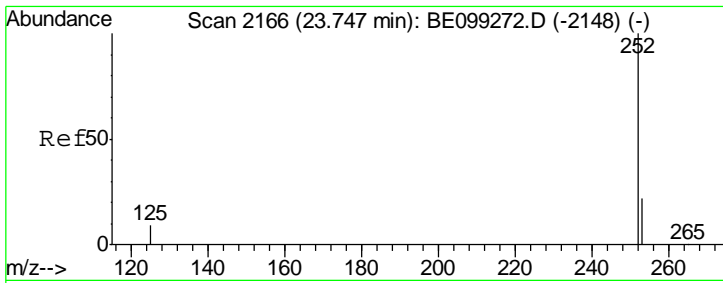


#36  
 Benzo(k)fluoranthene  
 Concen: 0.429 ng  
 RT: 23.14 min Scan# 1995  
 Delta R.T. 0.00 min  
 Lab File: BE099302.D  
 Acq: 5 Apr 2019 10:18

Tgt Ion: 252 Resp: 51827

Ion	Ratio	Lower	Upper
252	100		
253	22.5	18.0	27.0
125	6.5	5.2	7.8



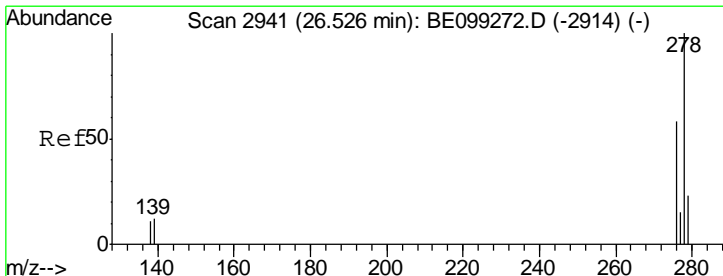
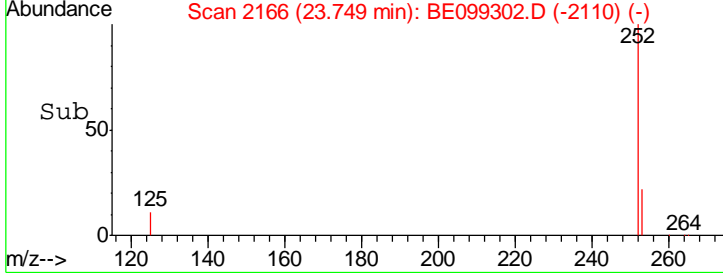
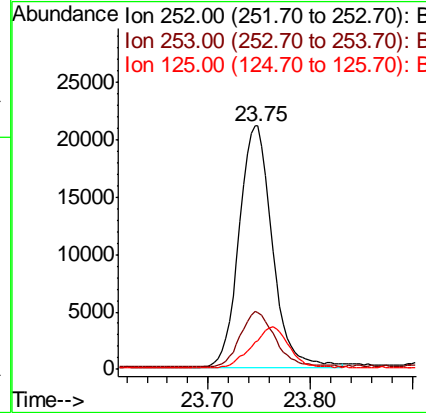
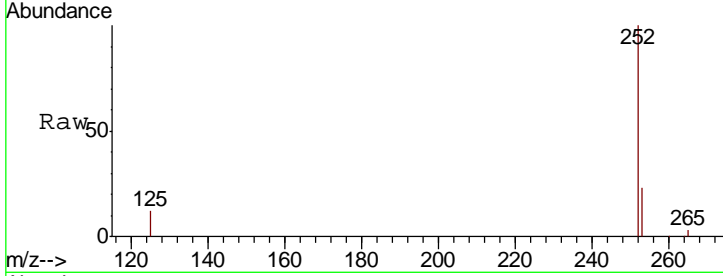


#37  
 Benzo(a)pyrene  
 Concen: 0.410 ng  
 RT: 23.75 min Scan# 2166  
 Delta R.T. 0.00 min  
 Lab File: BE099302.D  
 Acq: 5 Apr 2019 10:18

Instrument :  
 BNA\_E  
 ClientSampled :  
 SSTDCCC0.4

Tgt Ion: 252 Resp: 47734

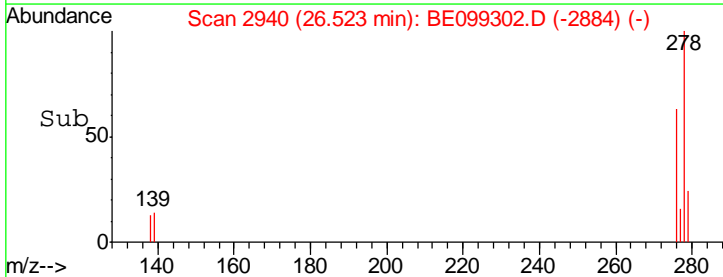
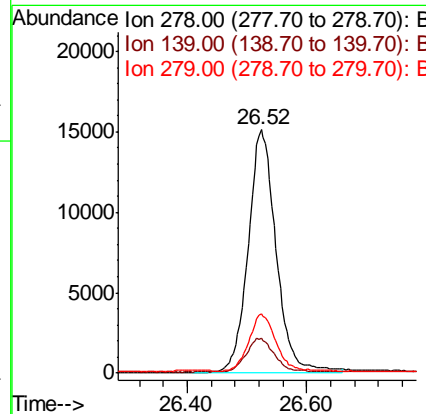
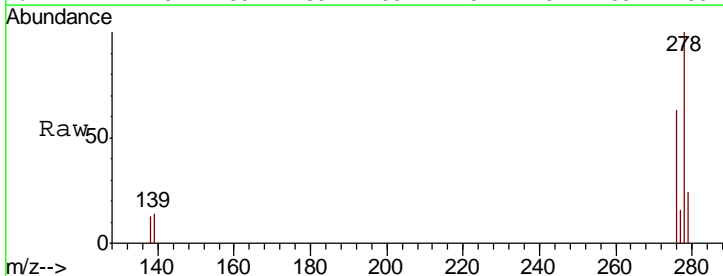
Ion	Ratio	Lower	Upper
252	100		
253	23.3	18.6	28.0
125	11.9	9.5	14.3

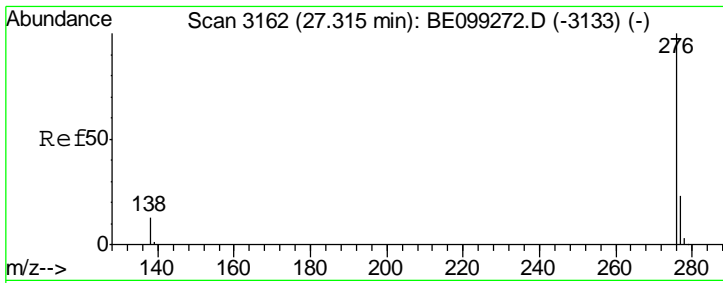


#38  
 Dibenzo(a,h)anthracene  
 Concen: 0.420 ng  
 RT: 26.52 min Scan# 2940  
 Delta R.T. 0.00 min  
 Lab File: BE099302.D  
 Acq: 5 Apr 2019 10:18

Tgt Ion: 278 Resp: 48727

Ion	Ratio	Lower	Upper
278	100		
139	14.1	11.3	16.9
279	24.3	19.4	29.2





#39  
 Benzo(a,h,i)perylene  
 Concen: 0.414 ng  
 RT: 27.31 min Scan# 3161  
 Delta R.T. 0.00 min  
 Lab File: BE099302.D  
 Acq: 5 Apr 2019 10:18

Instrument :  
 BNA\_E  
 ClientSampleID :  
 SSTDCCC0.4

Tot Ion: 276 Resp: 47850

Ion	Ratio	Lower	Upper
276	100		
277	23.7	19.0	28.4
138	13.4	10.7	16.1

