

Data Path : Z:\SVOASRV\HPCHEM1\BNA E\DATA\BE042619\  
 Data File : BE099386.D  
 Acq On : 26 Apr 2019 19:55  
 Operator : JU/SJ  
 Sample : SSTDCCC0.4  
 Misc :  
 ALS Vial : 2 Sample Multiplier: 1

Instrument :  
 BNA\_E  
 ClientSampled :  
 SSTDCCC0.4EC

Manual Integrations  
 APPROVED

Sohil  
 4/29/2019 1:28:53 PM

Quant Time: Apr 27 06:51:50 2019  
 Quant Method : Z:\SVOASRV\HPCHEM1\BNA E\METHODS\8270-SIM-BE041819.M  
 Quant Title : ASP BNA STANDARDS FOR 5 POINT CALIBRATION  
 QLast Update : Fri Apr 19 06:51:38 2019  
 Response via : Initial Calibration

Internal Standards	R.T.	QIon	Response	Conc	Units	Dev(Min)
1) 1,4-Dichlorobenzene-d4	7.82	152	3744	0.40	ng	0.00
7) Naphthalene-d8	10.61	136	14856	0.40	ng	0.01
13) Acenaphthene-d10	14.46	164	9974	0.40	ng	0.00
19) Phenanthrene-d10	17.20	188	26281	0.40	ng	0.01
27) Chrysene-d12	21.37	240	33565	0.40	ng	0.00
34) Perylene-d12	23.87	264	34942	0.40	ng	0.01

## System Monitoring Compounds

4) 2-Fluorophenol	5.40	112	4429	0.48	ng	0.01
5) Phenol-d6	6.97	99	6457	0.49	ng	0.00
8) Nitrobenzene-d5	8.96	82	5760	0.50	ng	0.00
11) 2-Methylnaphthalene-d10	12.21	152	10667	0.41	ng	0.01
14) 2,4,6-Tribromophenol	15.94	330	2319	0.70	ng	0.00
15) 2-Fluorobiphenyl	13.09	172	16559	0.42	ng	0.00
25) Fluoranthene-d10	19.22	212	135210	0.43	ng	0.00
29) Terphenyl-d14	19.82	244	27413	0.41	ng	0.00

## Target Compounds

Target Compounds	R.T.	QIon	Response	Conc	Units	Qvalue
2) 1,4-Dioxane	3.32	88	1834	0.350	ng	# 91
3) n-Nitrosodimethylamine	3.65	42	1113	0.395	ng	# 1
6) bis(2-Chloroethyl)ether	7.24	93	4789	0.393	ng	95
9) Naphthalene	10.65	128	70615	0.436	ng	100
10) Hexachlorobutadiene	10.94	225	4465	0.434	ng	96
12) 2-Methylnaphthalene	12.28	142	11971	0.434	ng	97
16) Acenaphthylene	14.18	152	20494	0.455	ng	99
17) Acenaphthene	14.53	154	11634	0.419	ng	97
18) Fluorene	15.50	166	16174	0.405	ng	99
20) 4-Bromophenyl-phenylether	16.38	248	6589	0.452	ng	# 91
21) Hexachlorobenzene	16.49	284	6362	0.455	ng	99
22) Pentachlorophenol	16.84	266	2967	0.745	ng	95
23) Phenanthrene	17.24	178	28298	0.407	ng	100
24) Anthracene	17.32	178	26948	0.435	ng	99
26) Fluoranthene	19.25	202	38705	0.416	ng	99
28) Pyrene	19.61	202	40086	0.405	ng	99
30) Benzo(a)anthracene	21.35	228	44465	0.451	ng	98
31) Chrysene	21.40	228	42830	0.408	ng	98
32) Bis(2-ethylhexyl)phthalate	21.27	149	78612	0.876	ng	100
33) Indeno(1,2,3-cd)pyrene	26.52	276	42236	0.407	ng	97
35) Benzo(b)fluoranthene	23.10	252	42070m	0.393	ng	
36) Benzo(k)fluoranthene	23.15	252	39523	0.371	ng	98
37) Benzo(a)pyrene	23.76	252	38916	0.406	ng	# 91
38) Dibenzo(a,h)anthracene	26.54	278	34992	0.357	ng	# 96
39) Benzo(g,h,i)perylene	27.34	276	31280	0.315	ng	96

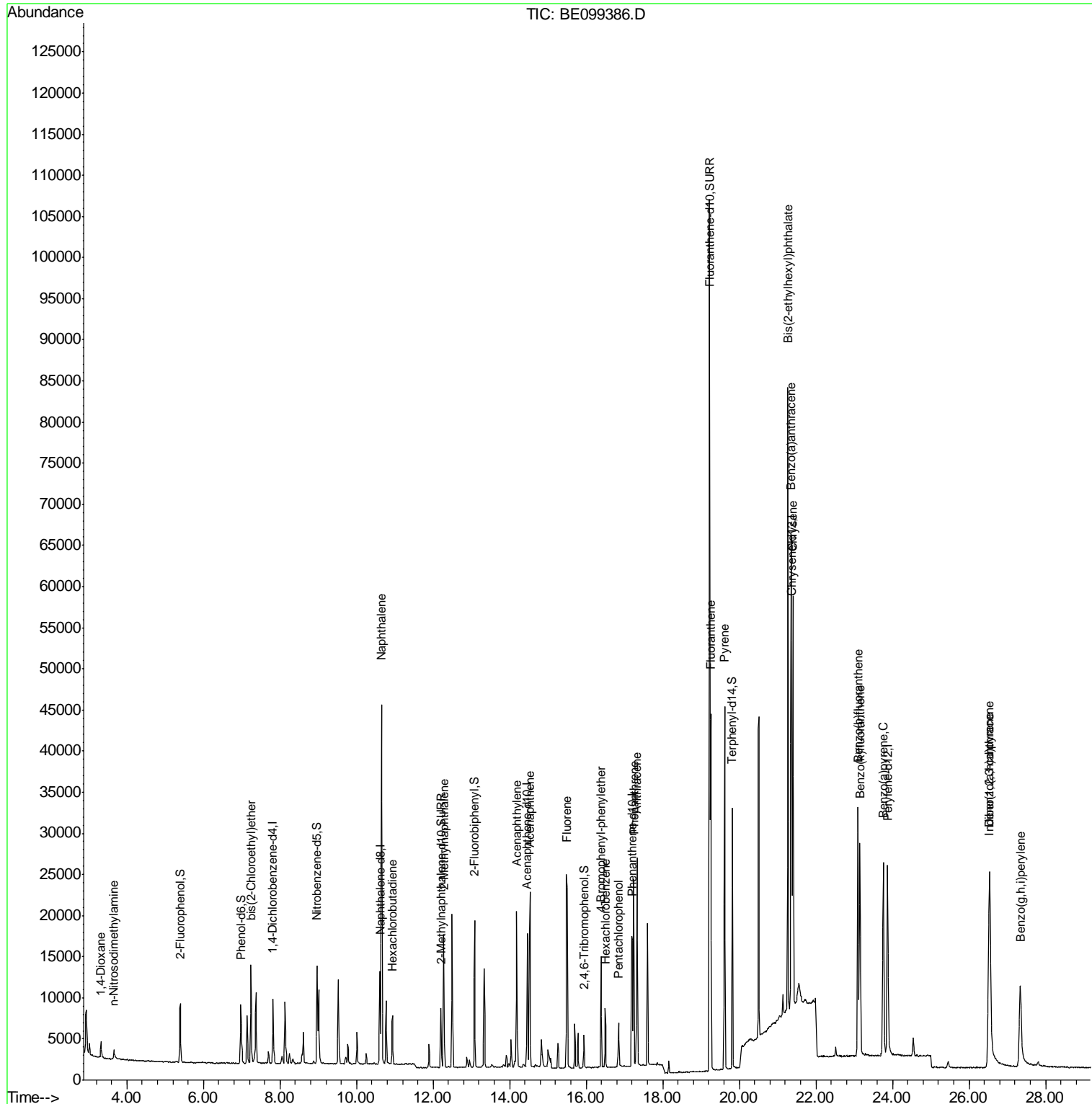
(#) = qualifier out of range (m) = manual integration (+) = signals summed

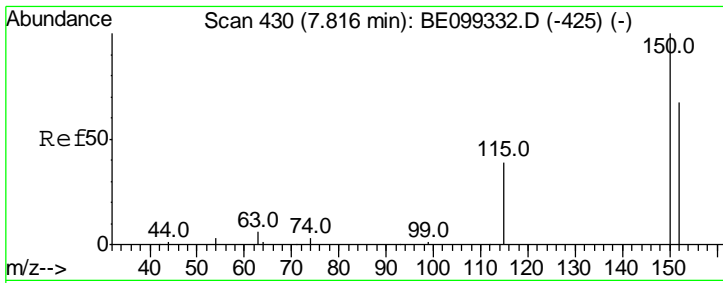
Data Path : Z:\SVOASRV\HPCHEM1\BNA E\DATA\BE042619\  
 Data File : BE099386.D  
 Acq On : 26 Apr 2019 19:55  
 Operator : JU/SJ  
 Sample : SSTDCCC0.4  
 Misc :  
 ALS Vial : 2 Sample Multiplier: 1

Instrument :  
 BNA\_E  
 Client Sampled :  
 SSTDCCC0.4EC

Manual Integrations  
 APPROVED  
 Sohil  
 4/29/2019 1:28:53 PM

Quant Time: Apr 27 06:51:50 2019  
 Quant Method : Z:\SVOASRV\HPCHEM1\BNA E\METHODS\8270-SIM-BE041819.M  
 Quant Title : ASP BNA STANDARDS FOR 5 POINT CALIBRATION  
 QLast Update : Fri Apr 19 06:51:38 2019  
 Response via : Initial Calibration



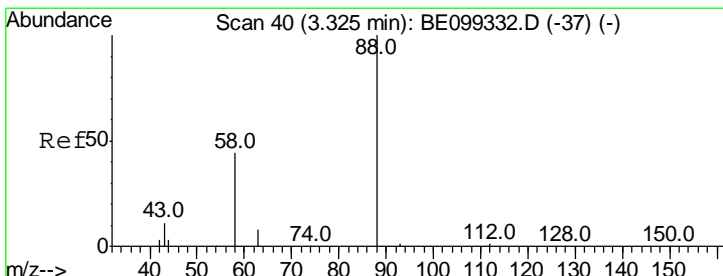
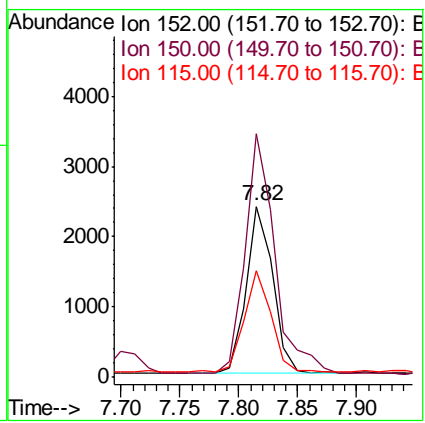
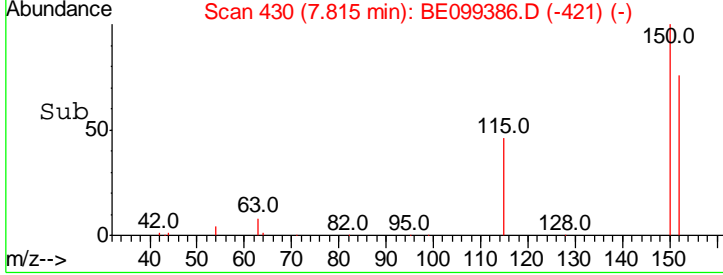
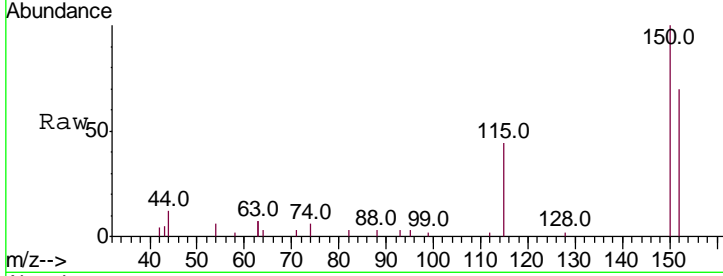


#1  
 1,4-Dichlorobenzene-d4  
 Concen: 0.400 ng  
 RT: 7.82 min Scan# 430  
 Delta R.T. -0.00 min  
 Lab File: BE099386.D  
 Acq: 26 Apr 2019 19:55

Instrument :  
 BNA\_E  
 ClientSampled :  
 SSTDCCC0.4EC

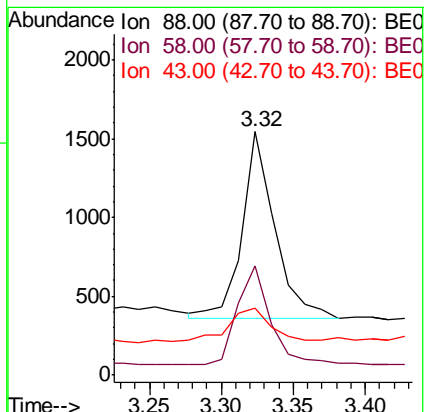
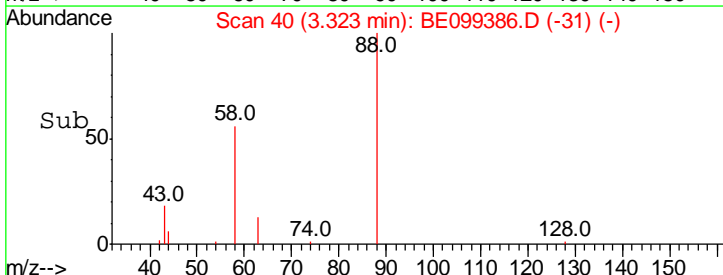
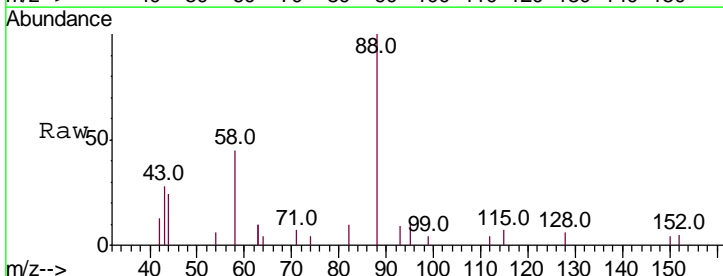
Tgt Ion	Resp	Lower	Upper
152	3744		
152	100		
150	142.3	119.5	179.3
115	62.4	47.5	71.3

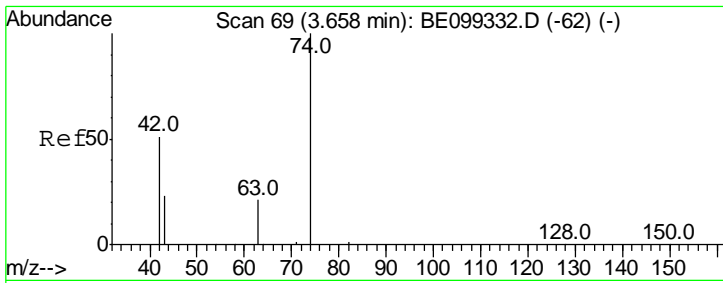
Manual Integrations  
**APPROVED**  
 Sohil  
 4/29/2019 1:28:53 PM



#2  
 1,4-Dioxane  
 Concen: 0.350 ng  
 RT: 3.32 min Scan# 40  
 Delta R.T. -0.00 min  
 Lab File: BE099386.D  
 Acq: 26 Apr 2019 19:55

Tgt Ion	Resp	Lower	Upper
88	1834		
88	100		
58	55.1	49.1	73.7
43	27.4	17.9	26.9#





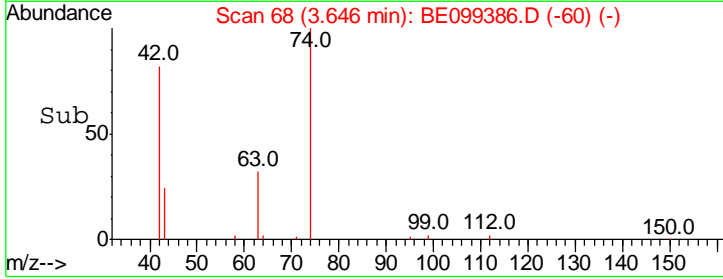
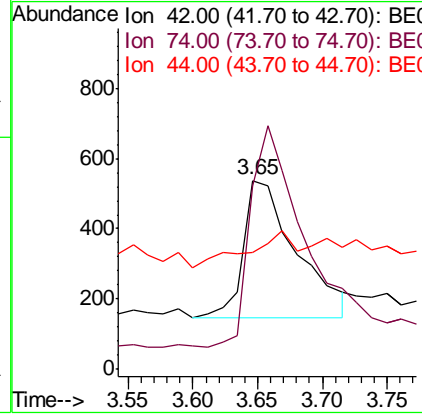
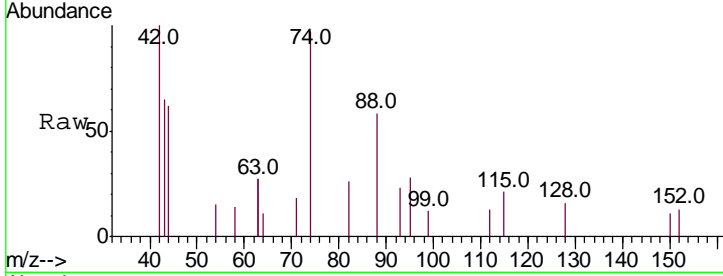
#3  
 n-Nitrosodimethylamine  
 Concen: 0.395 ng  
 RT: 3.65 min Scan# 68  
 Delta R.T. -0.01 min  
 Lab File: BE099386.D  
 Acq: 26 Apr 2019 19:55

**Instrument :**  
 BNA\_E  
**ClientSampled :**  
 SSTDCCC0.4EC

Tgt Ion	Ratio	Lower	Upper
42	100		
74	0.0	145.8	218.8#
44	0.0	9.0	13.4#

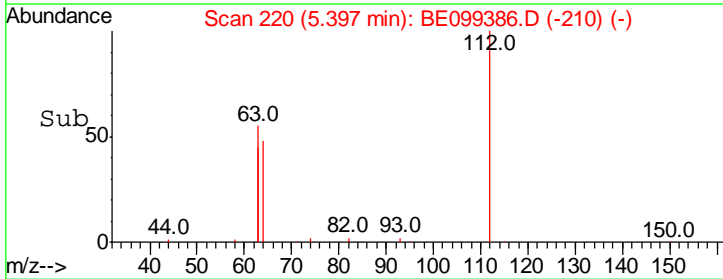
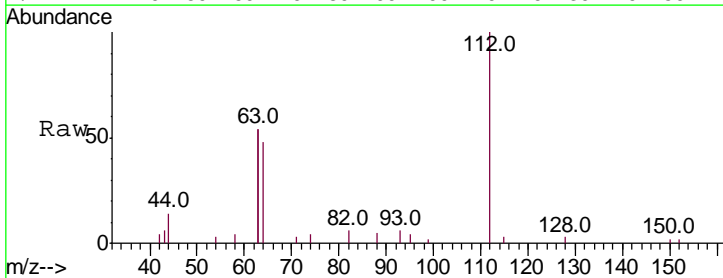
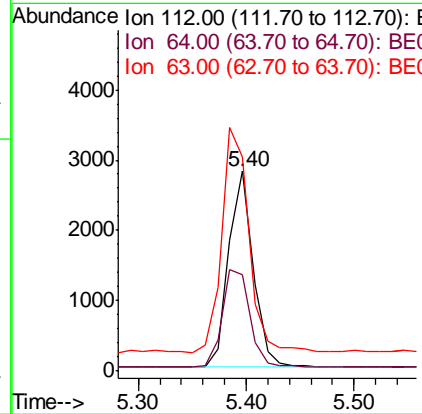
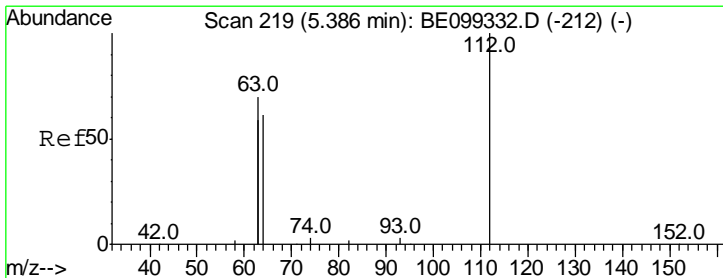
**Manual Integrations**  
**APPROVED**

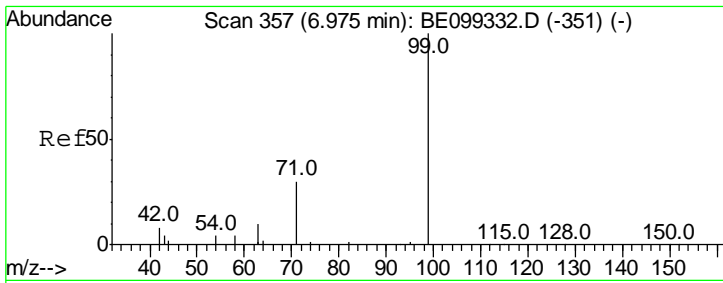
Sohil  
 4/29/2019 1:28:53 PM



#4  
 2-Fluorophenol  
 Concen: 0.484 ng  
 RT: 5.40 min Scan# 220  
 Delta R.T. 0.01 min  
 Lab File: BE099386.D  
 Acq: 26 Apr 2019 19:55

Tgt Ion	Ratio	Lower	Upper
112	100		
64	56.5	44.9	67.3
63	123.7	97.4	146.0





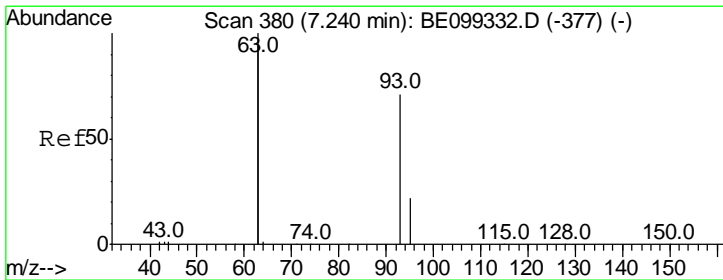
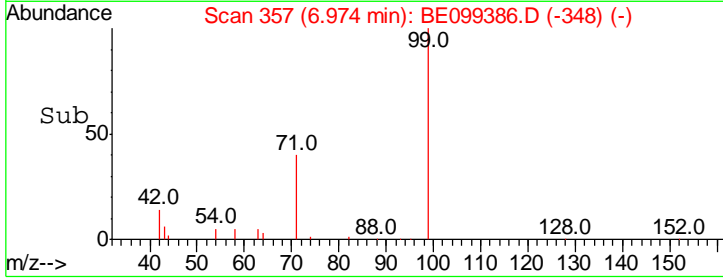
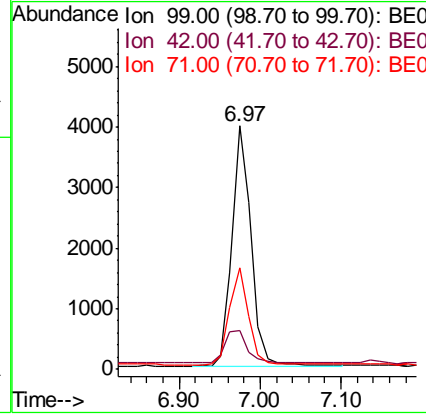
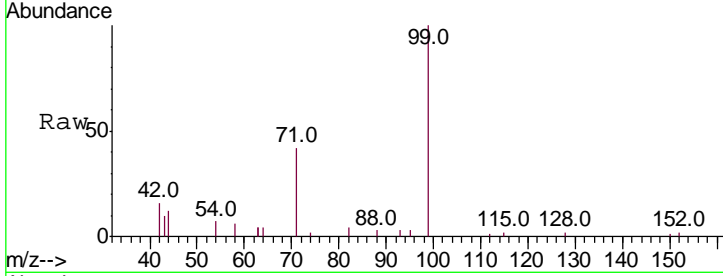
#5  
 Phenol-d6  
 Concen: 0.495 ng  
 RT: 6.97 min Scan# 357  
 Delta R.T. -0.00 min  
 Lab File: BE099386.D  
 Acq: 26 Apr 2019 19:55

**Instrument :**  
 BNA\_E  
**ClientSampled :**  
 SSTDCCC0.4EC

Tgt Ion	Ratio	Lower	Upper
99	100		
42	16.0	11.7	17.5
71	40.0	29.6	44.4

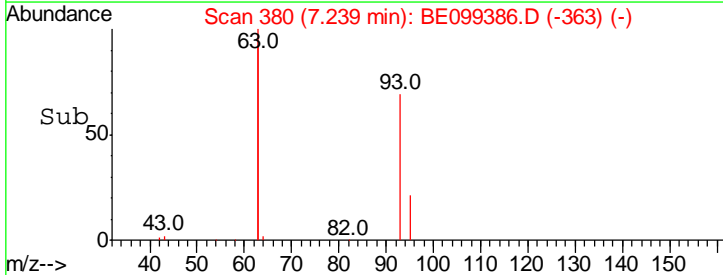
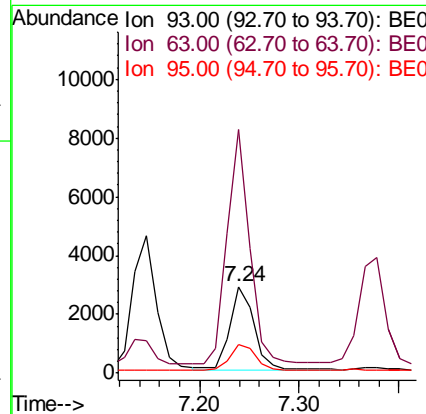
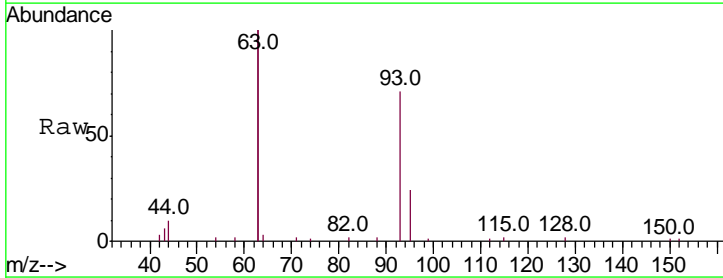
**Manual Integrations**  
**APPROVED**

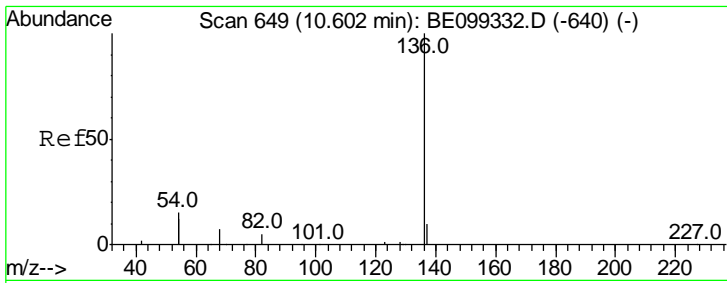
Sohil  
 4/29/2019 1:28:53 PM



#6  
 bis(2-Chloroethyl)ether  
 Concen: 0.393 ng  
 RT: 7.24 min Scan# 380  
 Delta R.T. -0.00 min  
 Lab File: BE099386.D  
 Acq: 26 Apr 2019 19:55

Tgt Ion	Ratio	Lower	Upper
93	100		
63	261.6	216.6	324.8
95	33.0	25.8	38.6



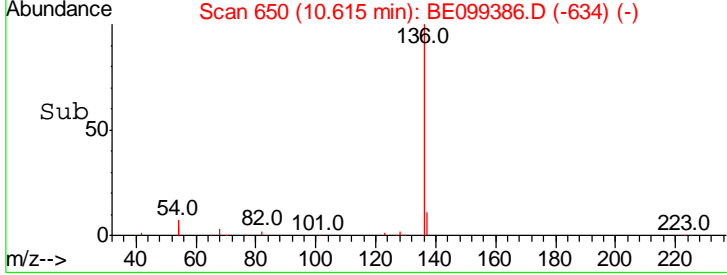
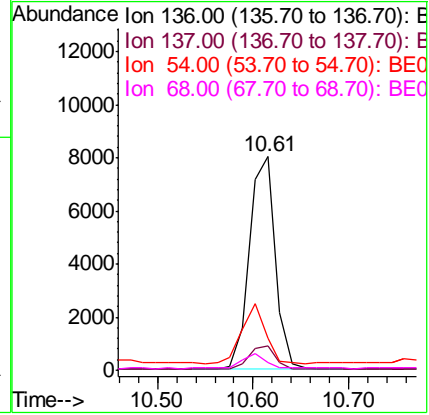
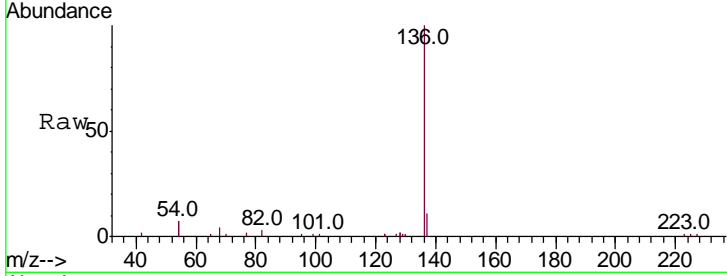


#7  
 Naphthalene-d8  
 Concen: 0.400 ng  
 RT: 10.61 min Scan# 650  
 Delta R.T. 0.01 min  
 Lab File: BE099386.D  
 Acq: 26 Apr 2019 19:55

**Instrument :**  
 BNA\_E  
**ClientSampled :**  
 SSTDCCC0.4EC

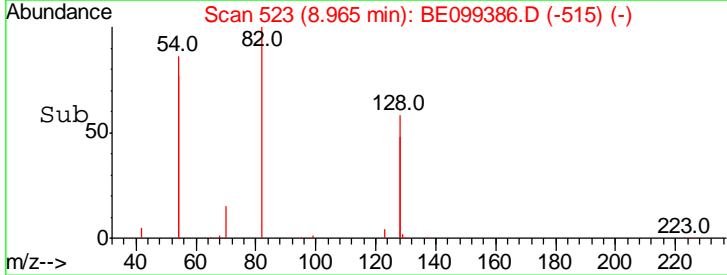
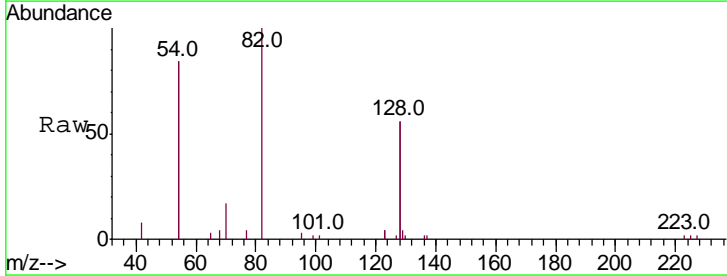
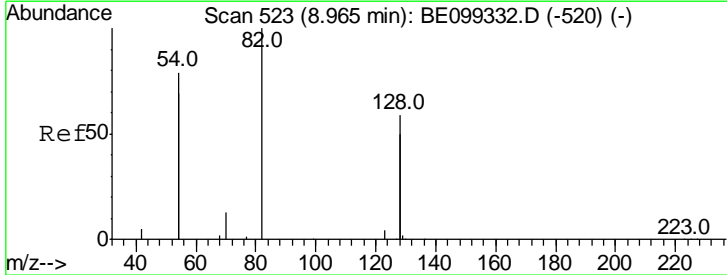
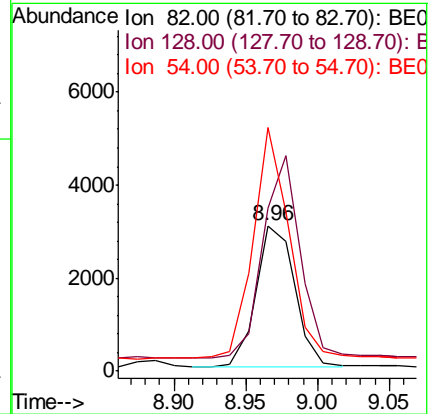
Tgt Ion	Resp	Lower	Upper
136	100		
137	11.2	8.7	13.1
54	14.9	23.8	35.8#
68	3.7	6.4	9.6#

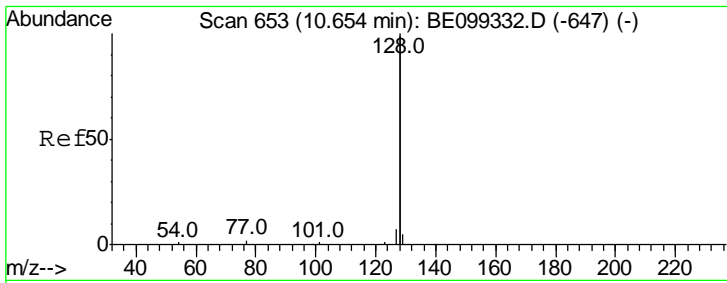
**Manual Integrations**  
**APPROVED**  
 Sohil  
 4/29/2019 1:28:53 PM



#8  
 Nitrobenzene-d5  
 Concen: 0.499 ng  
 RT: 8.96 min Scan# 523  
 Delta R.T. 0.00 min  
 Lab File: BE099386.D  
 Acq: 26 Apr 2019 19:55

Tgt Ion	Resp	Lower	Upper
82	100		
128	112.0	91.7	137.5
54	167.2	122.8	184.2





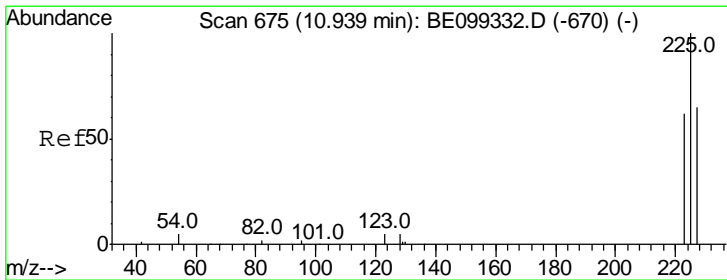
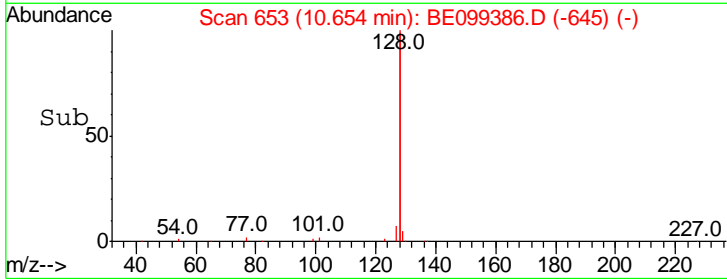
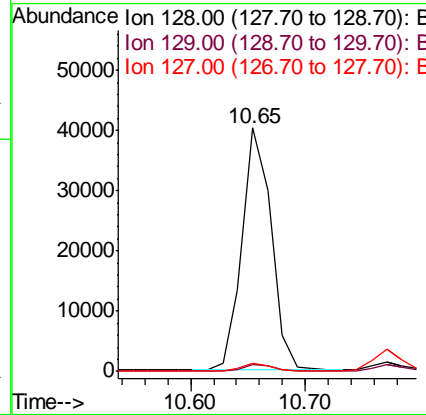
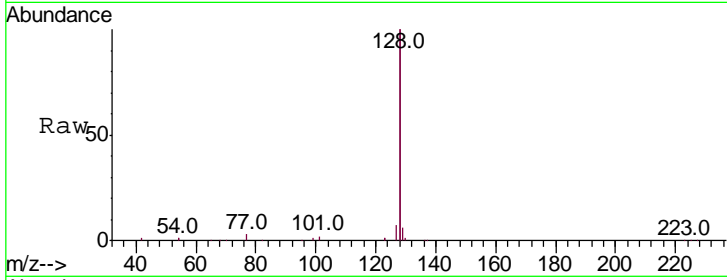
#9  
 Naphthalene  
 Concen: 0.436 ng  
 RT: 10.65 min Scan# 653  
 Delta R.T. 0.00 min  
 Lab File: BE099386.D  
 Acq: 26 Apr 2019 19:55

**Instrument :**  
 BNA\_E  
**ClientSampled :**  
 SSTDCCC0.4EC

Tgt Ion	Resp	Lower	Upper
128	100		
129	2.9	2.3	3.5
127	3.5	2.8	4.2

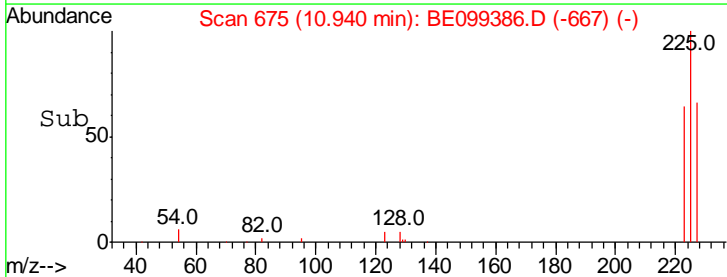
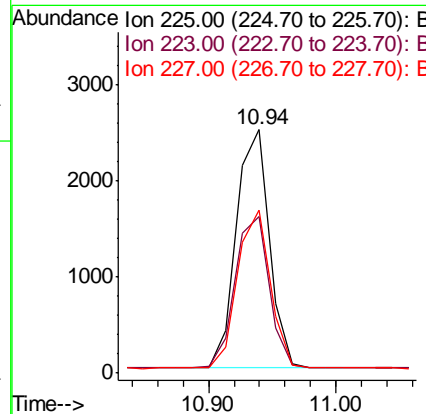
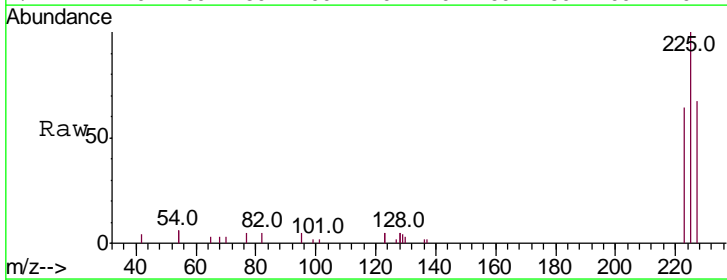
**Manual Integrations**  
**APPROVED**

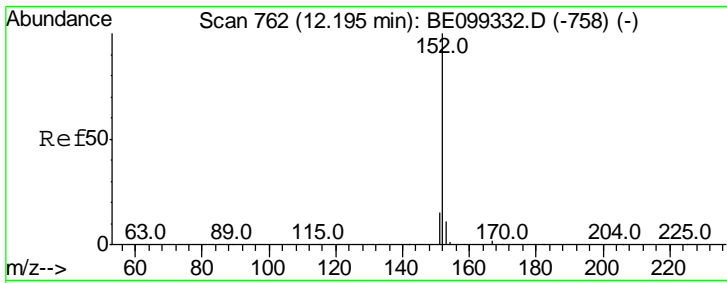
Sohil  
 4/29/2019 1:28:53 PM



#10  
 Hexachlorobutadiene  
 Concen: 0.434 ng  
 RT: 10.94 min Scan# 675  
 Delta R.T. 0.00 min  
 Lab File: BE099386.D  
 Acq: 26 Apr 2019 19:55

Tgt Ion	Resp	Lower	Upper
225	100		
223	65.5	50.3	75.5
227	65.7	49.4	74.0



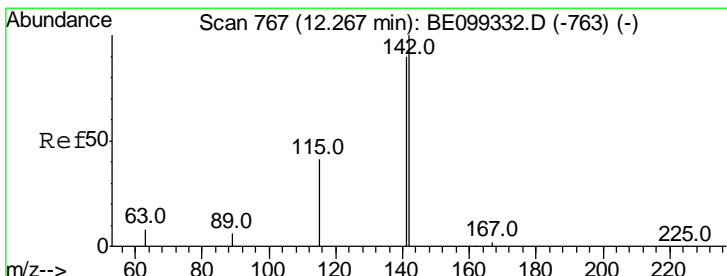
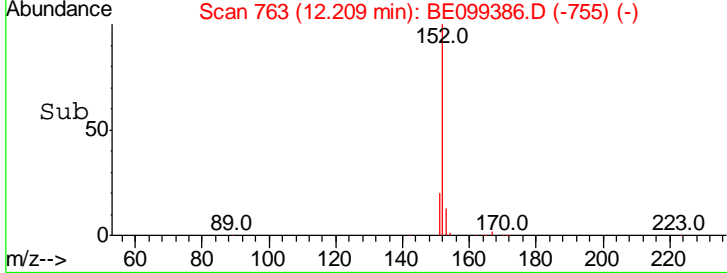
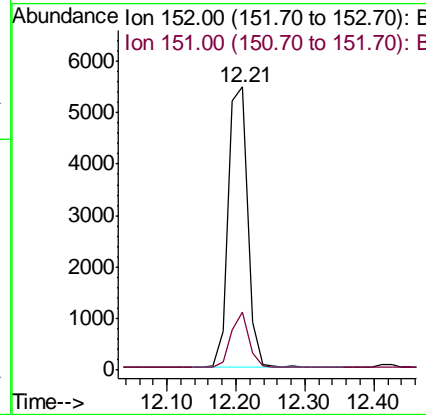
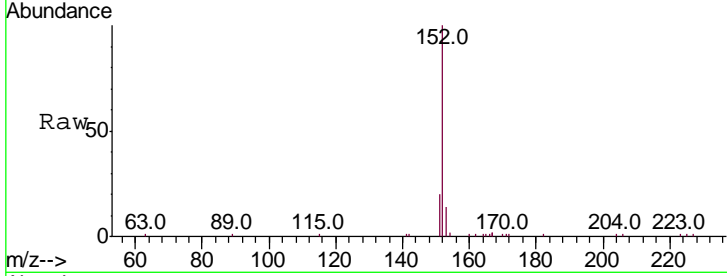


#11  
 2-Methylnaphthalene-d10  
 Concen: 0.407 ng  
 RT: 12.21 min Scan# 763  
 Delta R.T. 0.01 min  
 Lab File: BE099386.D  
 Acq: 26 Apr 2019 19:55

**Instrument :**  
 BNA\_E  
**ClientSampled :**  
 SSTCCCC0.4EC

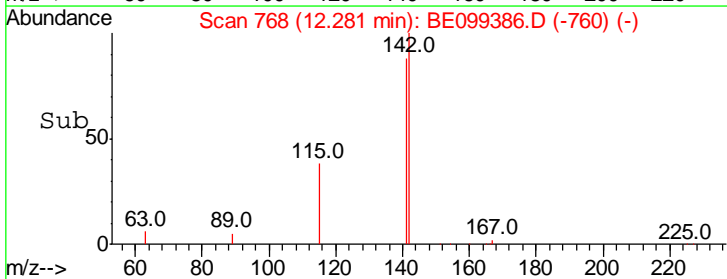
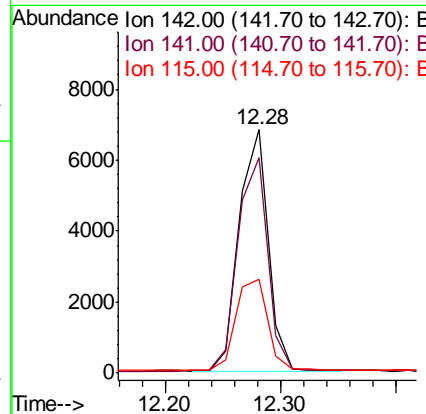
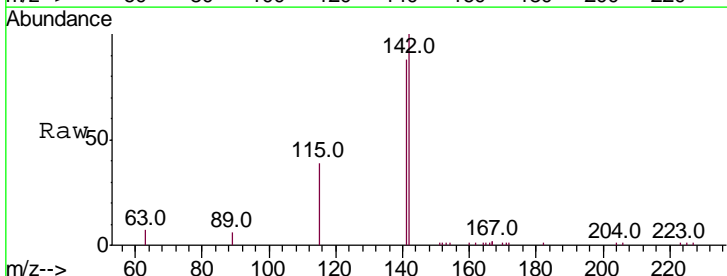
Tgt Ion	Resp	Lower	Upper
152	10667		
151	18.5	14.9	22.3

**Manual Integrations**  
**APPROVED**  
 Sohil  
 4/29/2019 1:28:53 PM

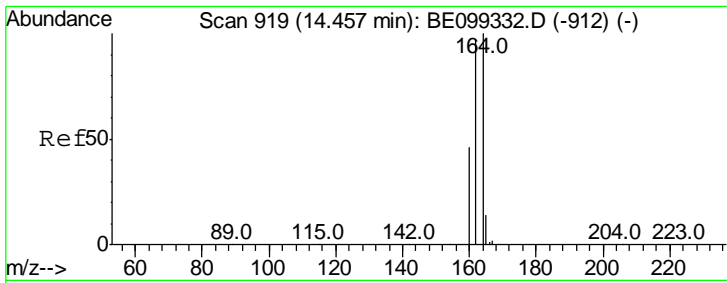


#12  
 2-Methylnaphthalene  
 Concen: 0.434 ng  
 RT: 12.28 min Scan# 768  
 Delta R.T. 0.01 min  
 Lab File: BE099386.D  
 Acq: 26 Apr 2019 19:55

Tgt Ion	Resp	Lower	Upper
142	11971		
141	88.3	72.0	108.0
115	38.6	33.4	50.0

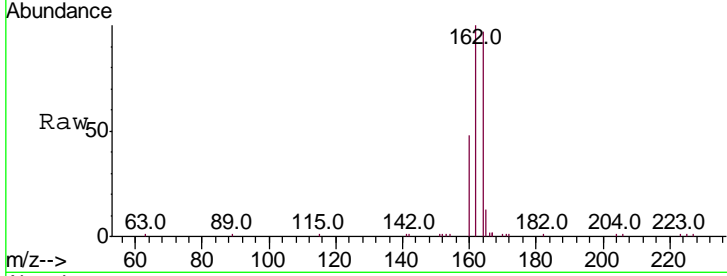






#13  
 Acenaphthene-d10  
 Concen: 0.400 ng  
 RT: 14.46 min Scan# 919  
 Delta R.T. 0.00 min  
 Lab File: BE099386.D  
 Acq: 26 Apr 2019 19:55

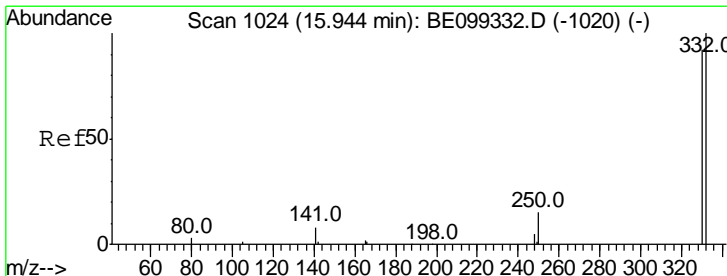
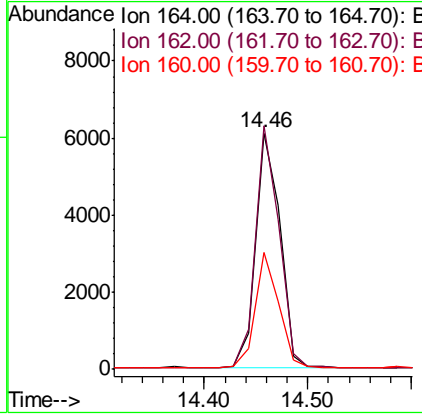
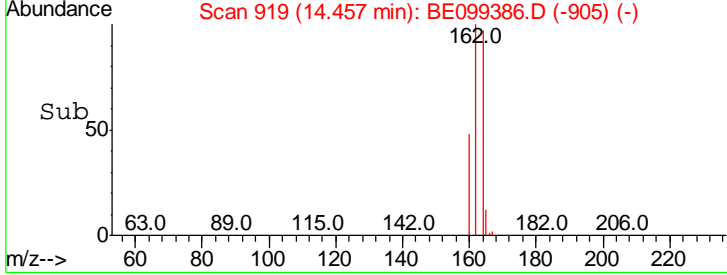
**Instrument :**  
 BNA\_E  
**ClientSampled :**  
 SSTDCCC0.4EC



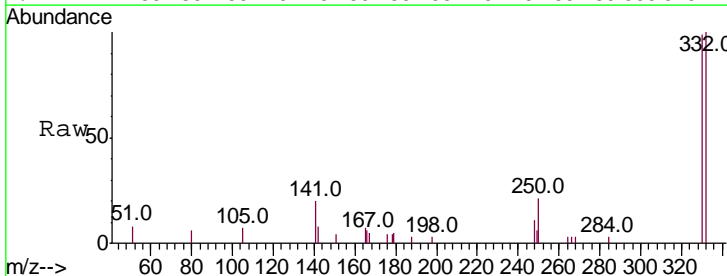
Tgt Ion: 164 Resp: 9974

Ion	Ratio	Lower	Upper
164	100		
162	103.1	77.8	116.6
160	49.6	37.1	55.7

**Manual Integrations**  
**APPROVED**  
 Sohil  
 4/29/2019 1:28:53 PM

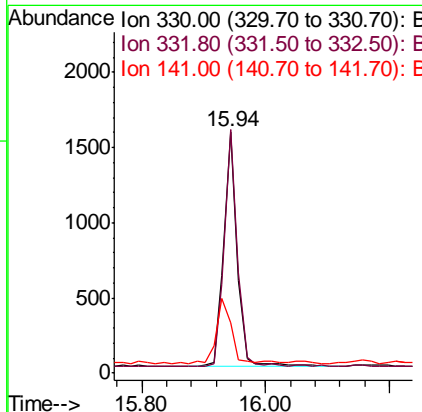
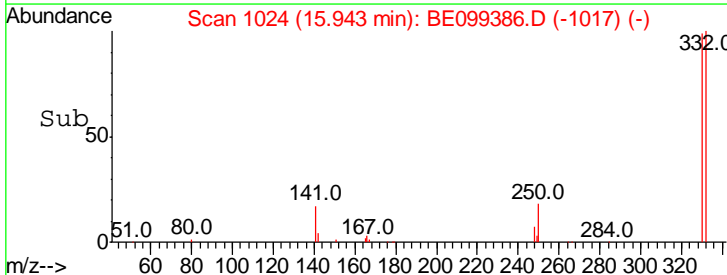


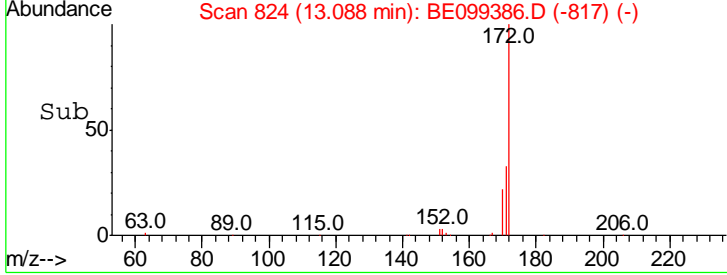
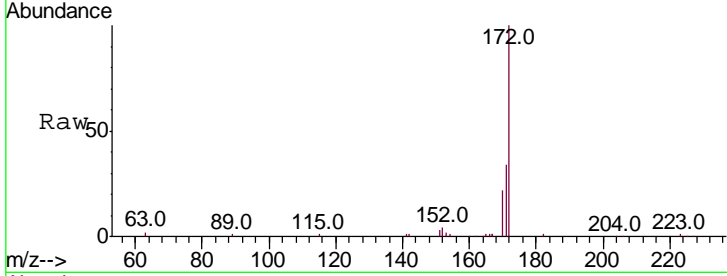
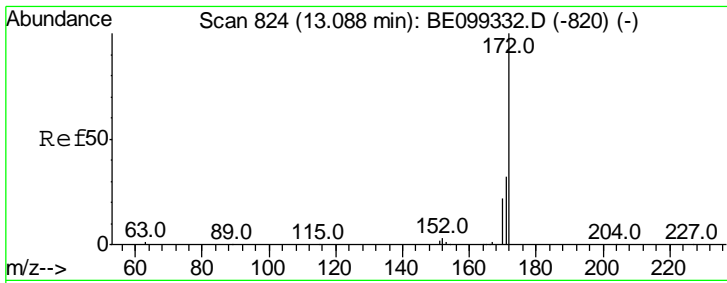
#14  
 2,4,6-Tribromophenol  
 Concen: 0.700 ng  
 RT: 15.94 min Scan# 1024  
 Delta R.T. -0.00 min  
 Lab File: BE099386.D  
 Acq: 26 Apr 2019 19:55



Tgt Ion: 330 Resp: 2319

Ion	Ratio	Lower	Upper
330	100		
332	98.8	82.5	123.7
141	30.2	24.9	37.3



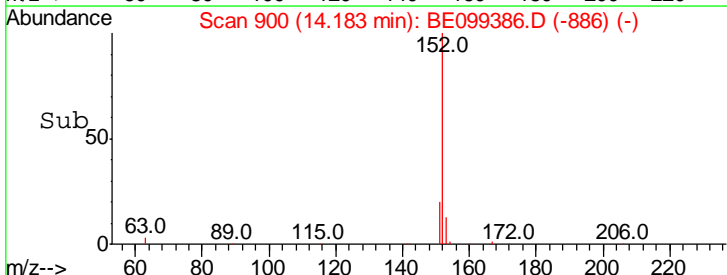
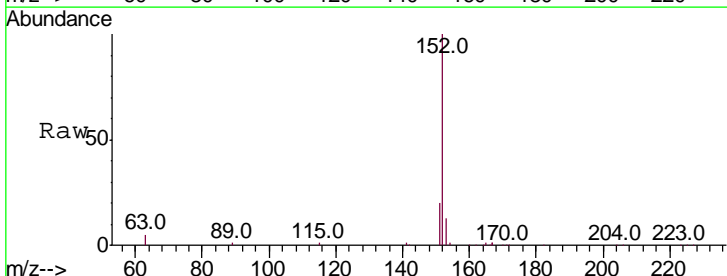
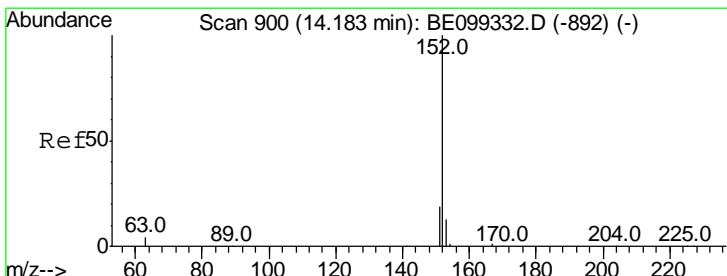
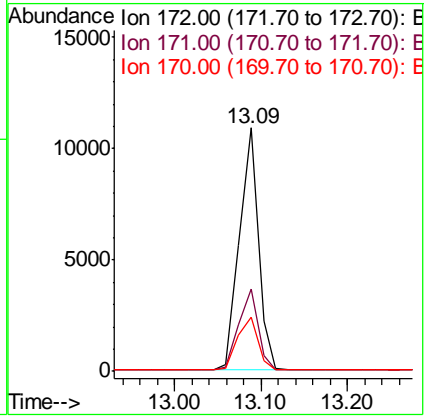


#15  
 2-Fluorobiphenyl  
 Concen: 0.422 ng  
 RT: 13.09 min Scan# 824  
 Delta R.T. 0.00 min  
 Lab File: BE099386.D  
 Acq: 26 Apr 2019 19:55

Tgt Ion	Resp	Lower	Upper
172	100		
171	33.7	26.2	39.2
170	22.3	18.1	27.1

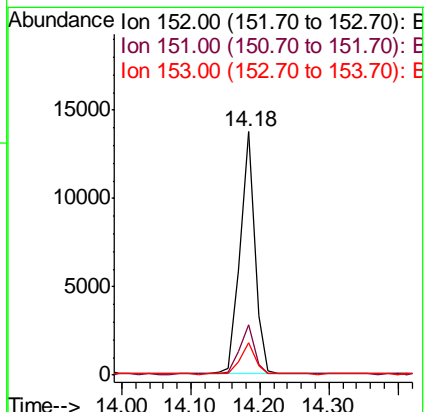
**Instrument :**  
 BNA\_E  
**ClientSampled :**  
 SSTDCCC0.4EC

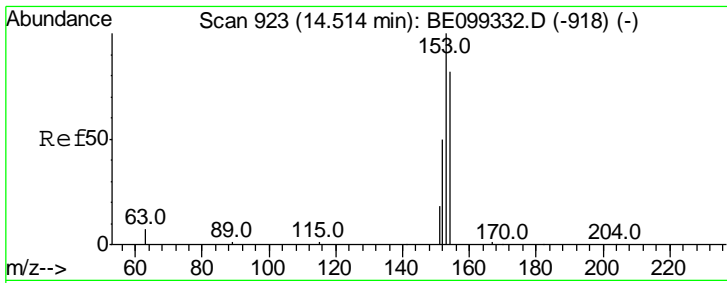
**Manual Integrations**  
**APPROVED**  
 Sohil  
 4/29/2019 1:28:53 PM



#16  
 Acenaphthylene  
 Concen: 0.455 ng  
 RT: 14.18 min Scan# 900  
 Delta R.T. 0.00 min  
 Lab File: BE099386.D  
 Acq: 26 Apr 2019 19:55

Tgt Ion	Resp	Lower	Upper
152	100		
151	19.9	15.5	23.3
153	12.8	10.2	15.4





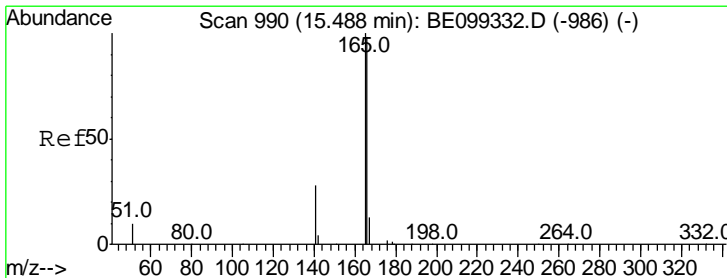
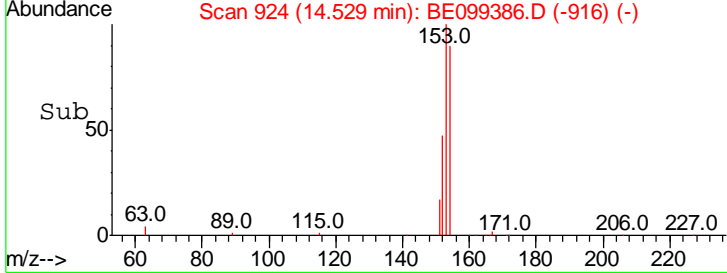
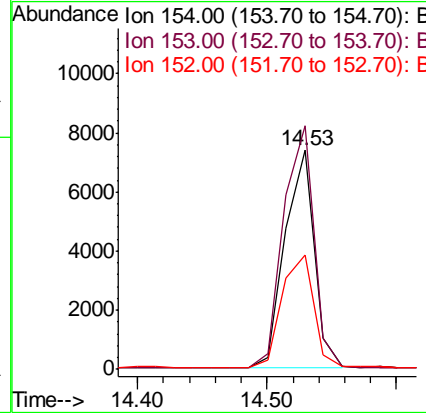
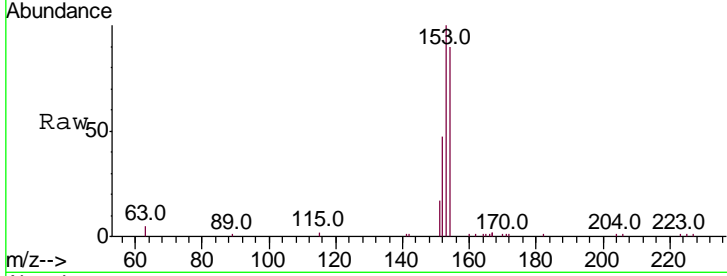
#17  
 Acenaphthene  
 Concen: 0.419 ng  
 RT: 14.53 min Scan# 924  
 Delta R.T. 0.01 min  
 Lab File: BE099386.D  
 Acq: 26 Apr 2019 19:55

**Instrument :**  
 BNA\_E  
**ClientSampled :**  
 SSTDCCC0.4EC

Tgt Ion	Resp	Lower	Upper
154	100		
153	115.4	94.7	142.1
152	55.9	46.4	69.6

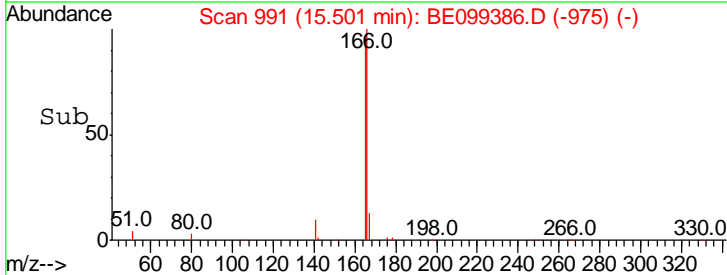
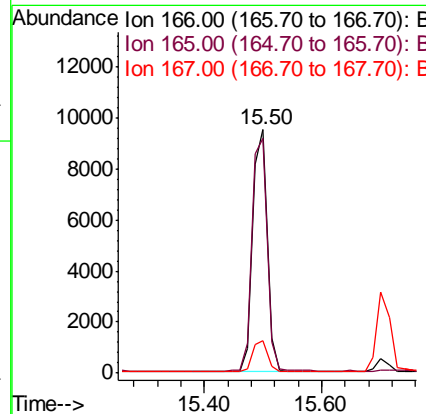
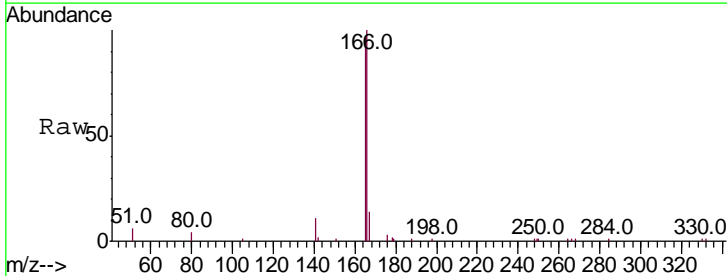
**Manual Integrations**  
**APPROVED**

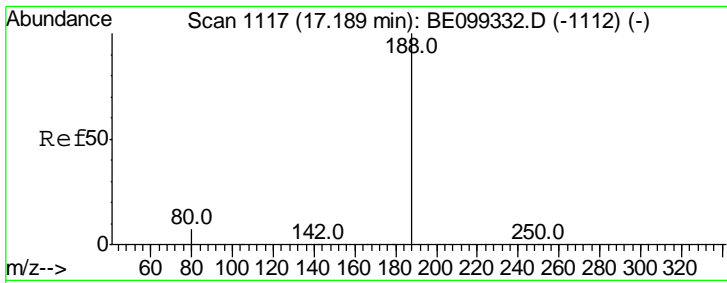
Sohil  
 4/29/2019 1:28:53 PM



#18  
 Fluorene  
 Concen: 0.405 ng  
 RT: 15.50 min Scan# 991  
 Delta R.T. 0.01 min  
 Lab File: BE099386.D  
 Acq: 26 Apr 2019 19:55

Tgt Ion	Resp	Lower	Upper
166	100		
165	100.7	79.7	119.5
167	13.1	11.0	16.4





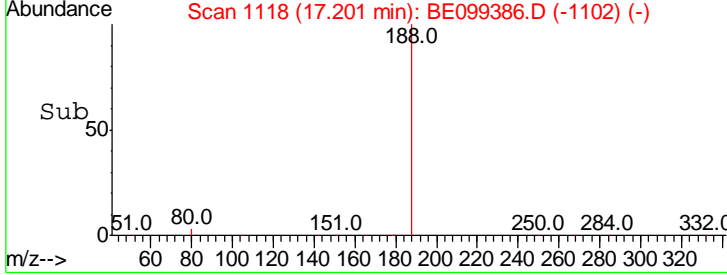
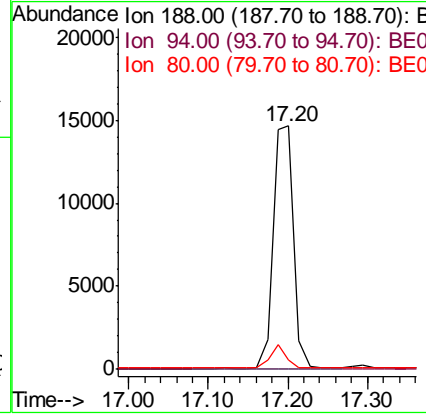
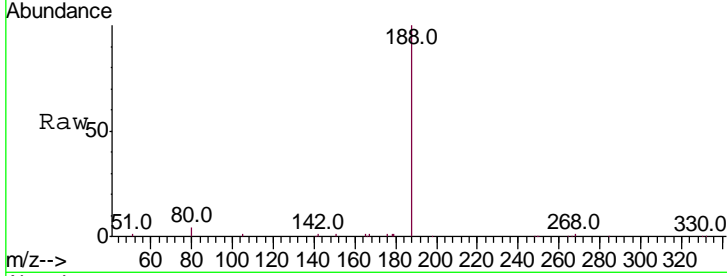
#19  
 Phenanthrene-d10  
 Concen: 0.400 ng  
 RT: 17.20 min Scan# 1118  
 Delta R.T. 0.01 min  
 Lab File: BE099386.D  
 Acq: 26 Apr 2019 19:55

**Instrument :**  
 BNA\_E  
**ClientSampled :**  
 SSTDCCC0.4EC

Tgt Ion	Resp	Lower	Upper
188	100		
94	0.0	0.0	0.0
80	4.0	6.2	9.4#

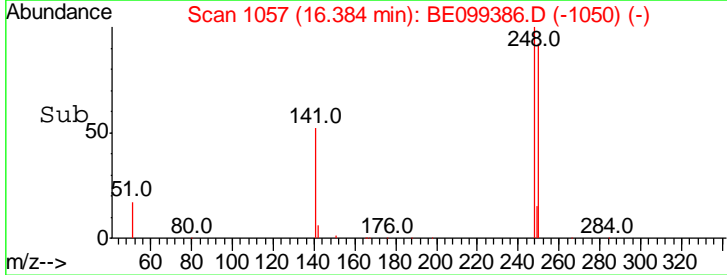
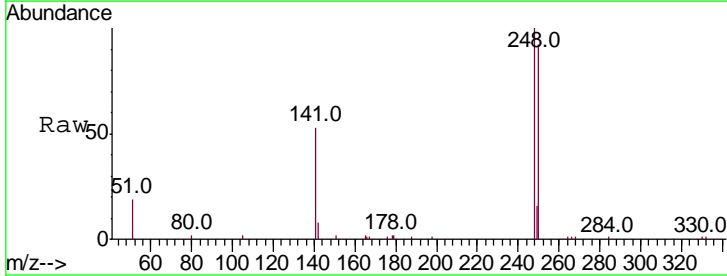
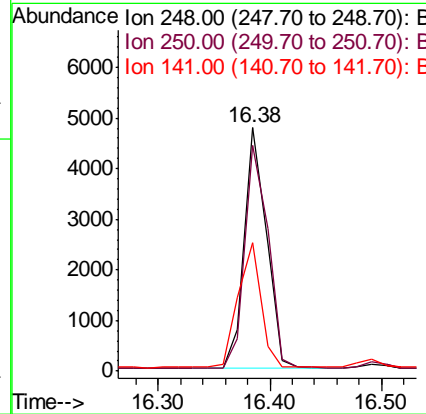
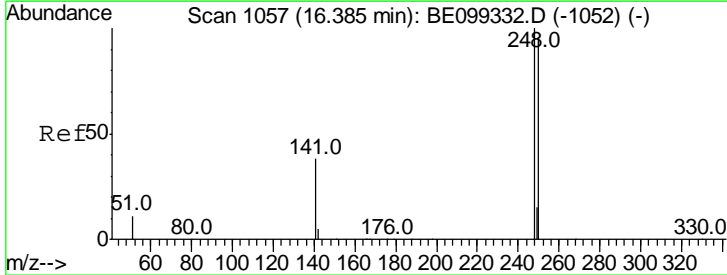
**Manual Integrations**  
**APPROVED**

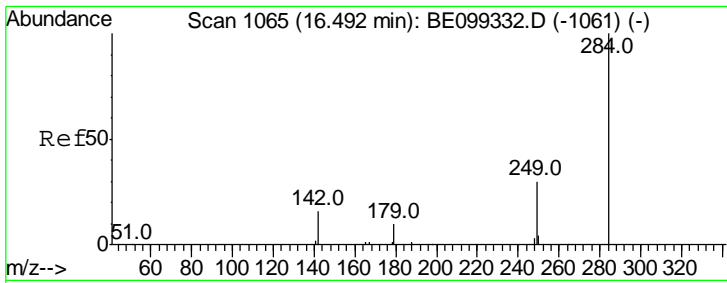
Sohil  
 4/29/2019 1:28:53 PM



#20  
 4-Bromophenyl-phenylether  
 Concen: 0.452 ng  
 RT: 16.38 min Scan# 1057  
 Delta R.T. -0.00 min  
 Lab File: BE099386.D  
 Acq: 26 Apr 2019 19:55

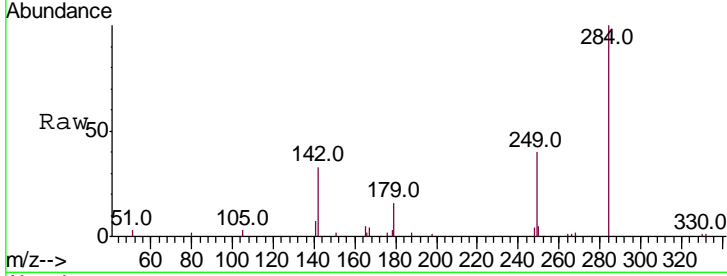
Tgt Ion	Resp	Lower	Upper
248	100		
250	92.5	77.0	115.6
141	52.5	31.1	46.7#





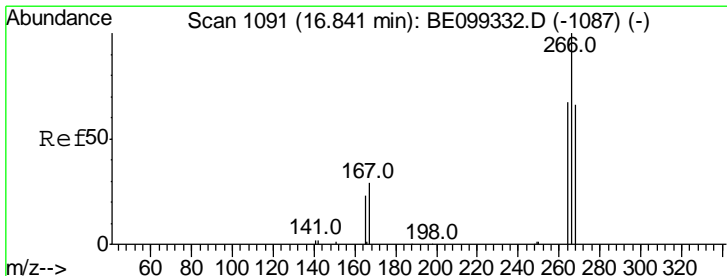
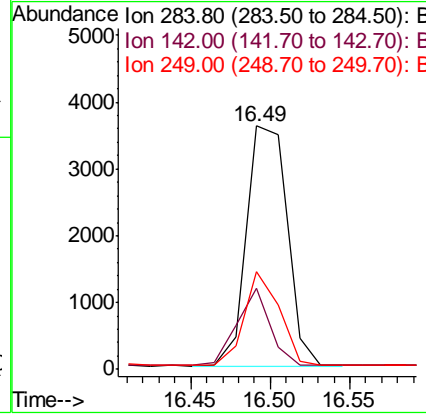
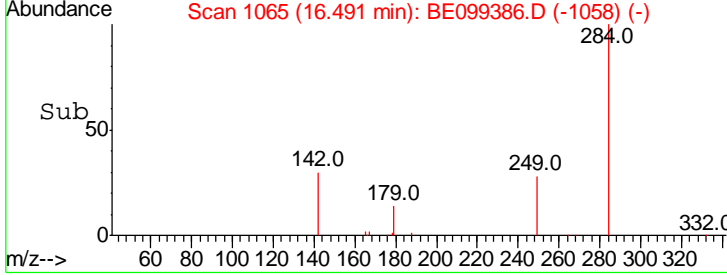
#21  
 Hexachlorobenzene  
 Concen: 0.455 ng  
 RT: 16.49 min Scan# 1065  
 Delta R.T. -0.00 min  
 Lab File: BE099386.D  
 Acq: 26 Apr 2019 19:55

Instrument :  
 BNA\_E  
 ClientSampled :  
 SSTDCCC0.4EC

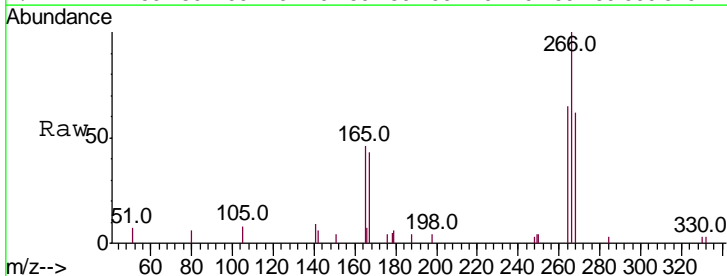


Tgt Ion	Resp	Lower	Upper
284	100		
142	26.4	21.8	32.6
249	33.5	26.2	39.4

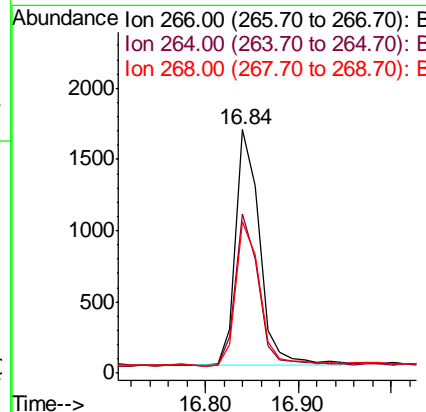
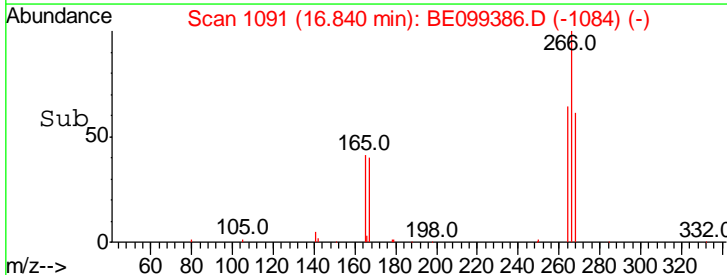
Manual Integrations  
**APPROVED**  
 Sohil  
 4/29/2019 1:28:53 PM

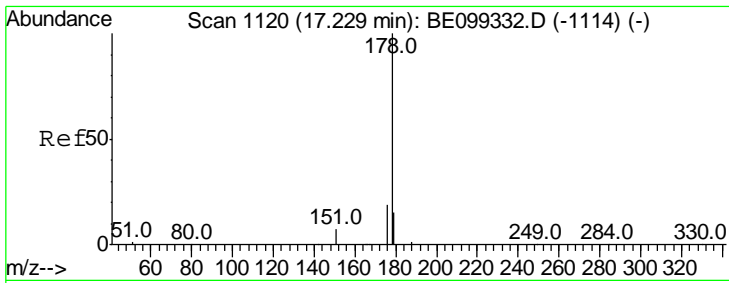


#22  
 Pentachlorophenol  
 Concen: 0.745 ng  
 RT: 16.84 min Scan# 1091  
 Delta R.T. -0.00 min  
 Lab File: BE099386.D  
 Acq: 26 Apr 2019 19:55



Tgt Ion	Resp	Lower	Upper
266	100		
264	65.3	54.5	81.7
268	62.0	54.3	81.5





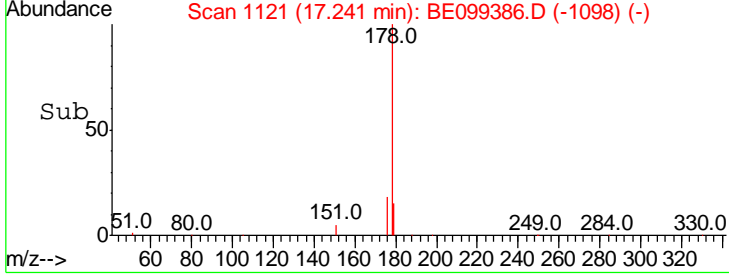
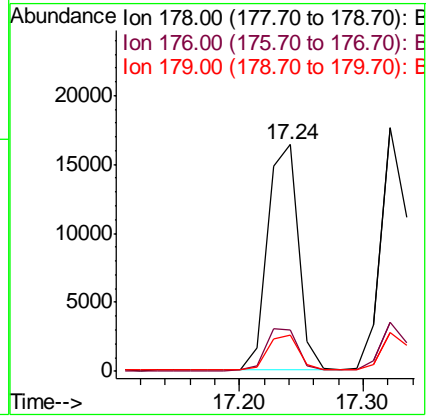
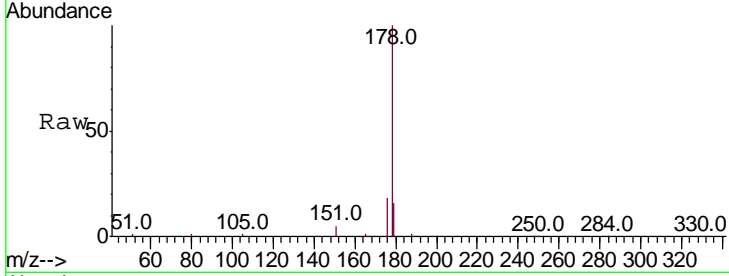
#23  
 Phenanthrene  
 Concen: 0.407 ng  
 RT: 17.24 min Scan# 1121  
 Delta R.T. 0.01 min  
 Lab File: BE099386.D  
 Acq: 26 Apr 2019 19:55

**Instrument :**  
 BNA\_E  
**ClientSampled :**  
 SSTDCCC0.4EC

Tgt Ion	Resp	Lower	Upper
178	100		
176	19.3	15.3	22.9
179	15.7	12.4	18.6

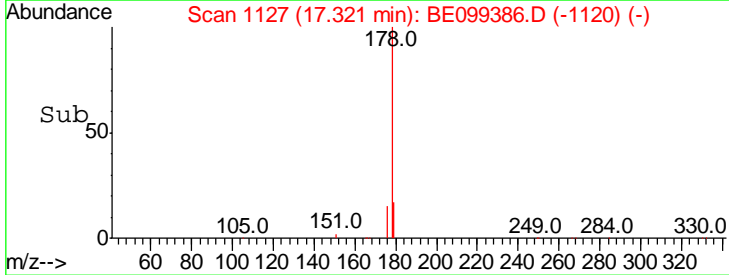
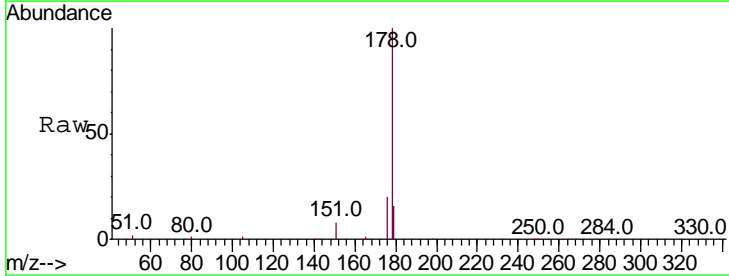
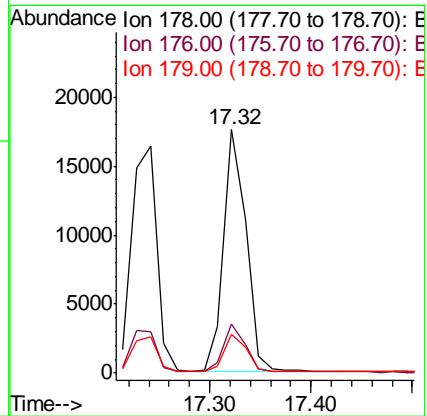
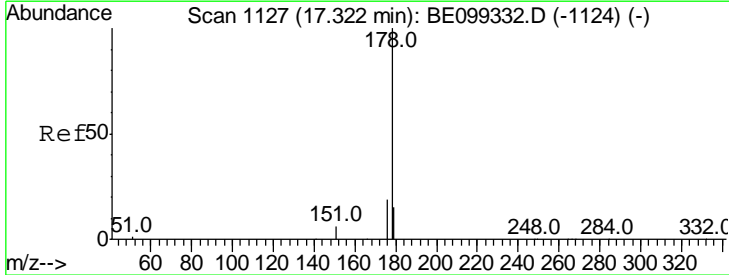
**Manual Integrations**  
**APPROVED**

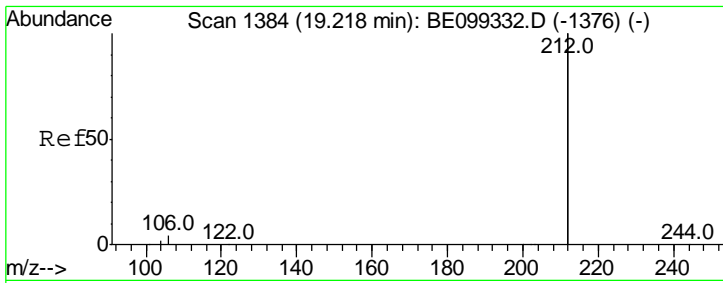
Sohil  
 4/29/2019 1:28:53 PM



#24  
 Anthracene  
 Concen: 0.435 ng  
 RT: 17.32 min Scan# 1127  
 Delta R.T. -0.00 min  
 Lab File: BE099386.D  
 Acq: 26 Apr 2019 19:55

Tgt Ion	Resp	Lower	Upper
178	100		
176	18.9	15.1	22.7
179	15.6	11.9	17.9





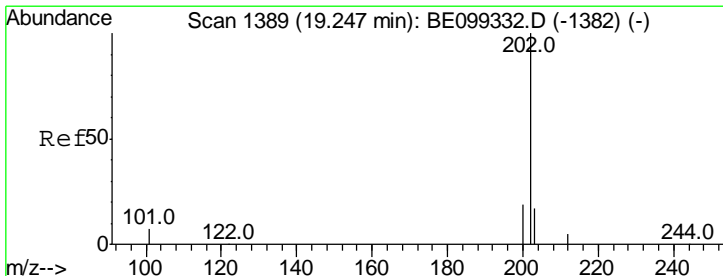
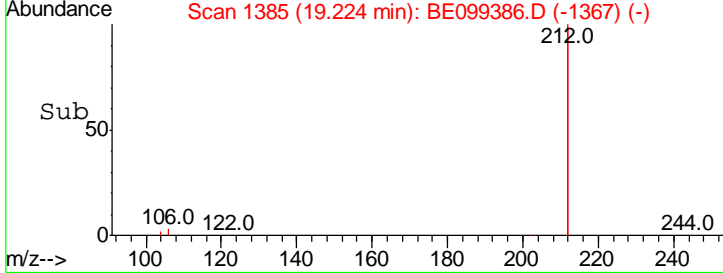
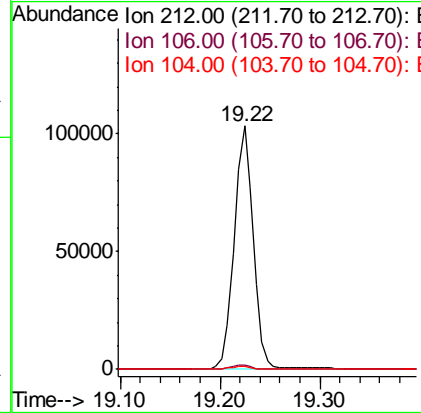
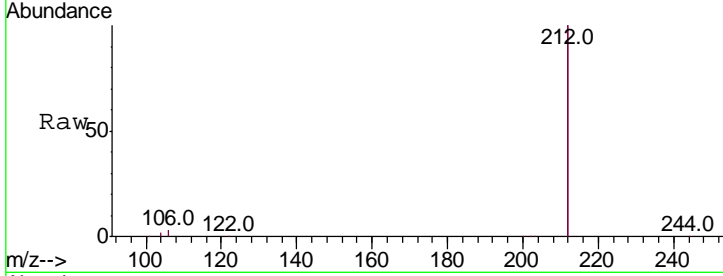
#25  
 Fluoranthene-d10  
 Concen: 0.428 ng  
 RT: 19.22 min Scan# 1385  
 Delta R.T. 0.01 min  
 Lab File: BE099386.D  
 Acq: 26 Apr 2019 19:55

**Instrument :**  
 BNA\_E  
**ClientSampled :**  
 SSTDCCC0.4EC

Tgt Ion	Ratio	Lower	Upper
212	100		
106	1.8	1.8	2.6
104	1.1	1.0	1.4

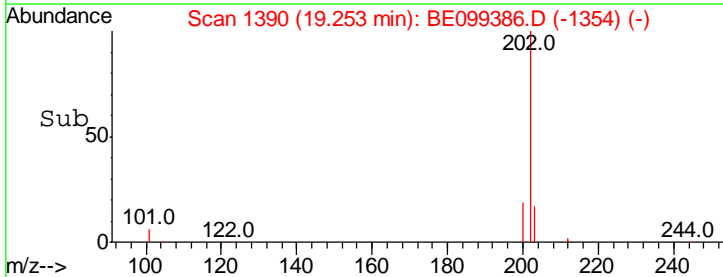
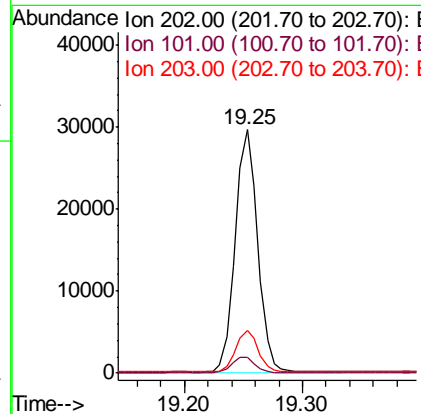
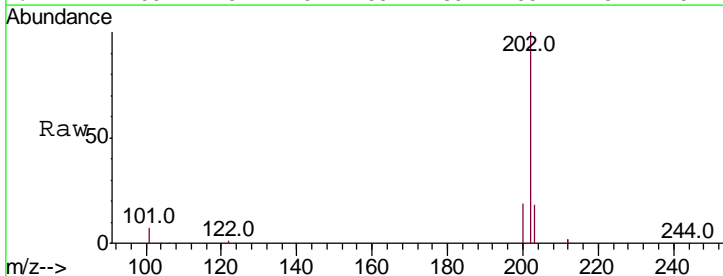
**Manual Integrations**  
**APPROVED**

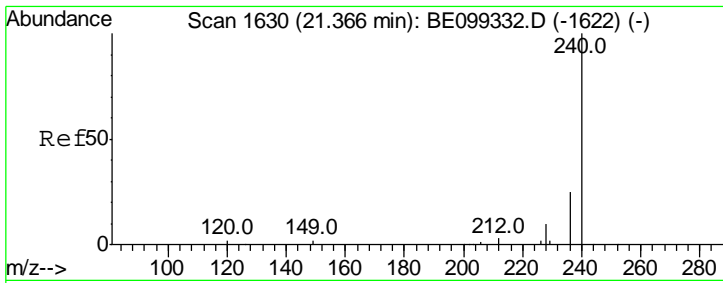
Sohil  
 4/29/2019 1:28:53 PM



#26  
 Fluoranthene  
 Concen: 0.416 ng  
 RT: 19.25 min Scan# 1390  
 Delta R.T. 0.01 min  
 Lab File: BE099386.D  
 Acq: 26 Apr 2019 19:55

Tgt Ion	Ratio	Lower	Upper
202	100		
101	6.9	6.4	9.6
203	17.1	13.5	20.3





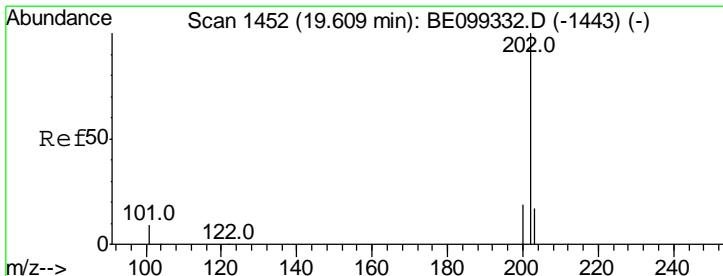
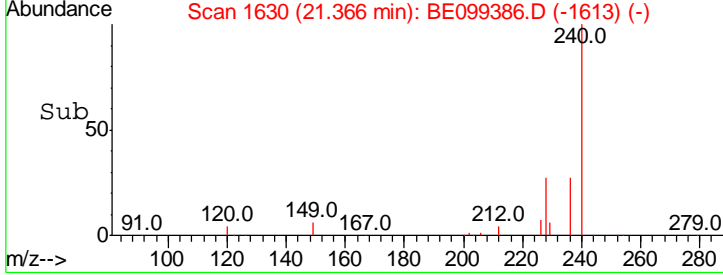
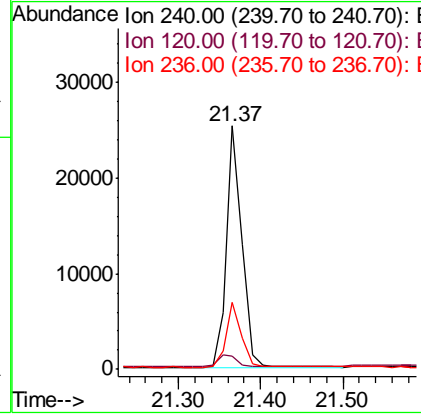
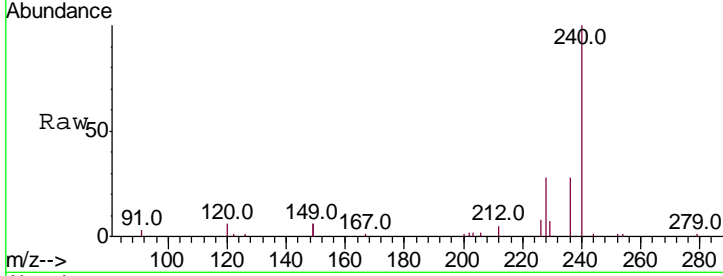
#27  
 Chrysene-d12  
 Concen: 0.400 ng  
 RT: 21.37 min Scan# 1630  
 Delta R.T. -0.00 min  
 Lab File: BE099386.D  
 Acq: 26 Apr 2019 19:55

**Instrument :**  
 BNA\_E  
**ClientSampled :**  
 SSTDCCC0.4EC

Tgt Ion	Resp	Lower	Upper
240	100		
120	5.6	2.2	3.2#
236	27.7	20.2	30.4

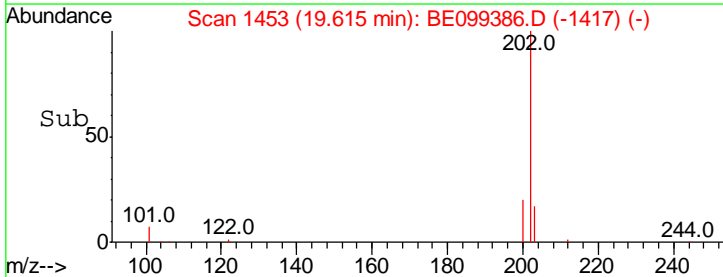
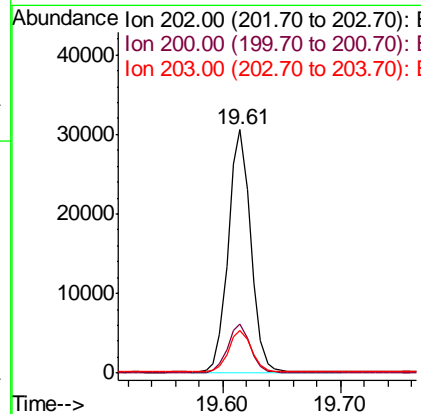
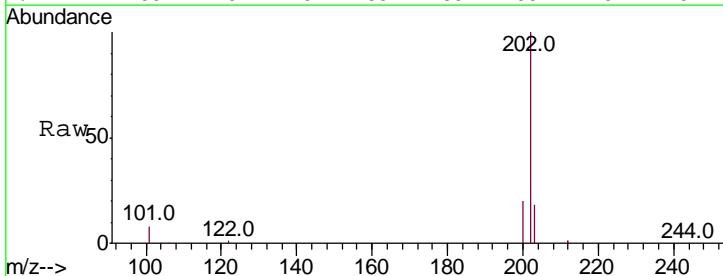
**Manual Integrations**  
**APPROVED**

Sohil  
 4/29/2019 1:28:53 PM

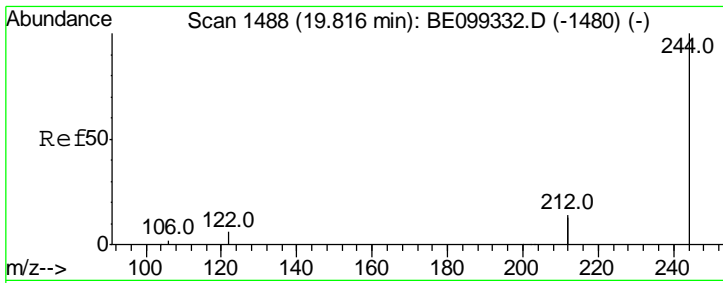


#28  
 Pyrene  
 Concen: 0.405 ng  
 RT: 19.61 min Scan# 1453  
 Delta R.T. 0.01 min  
 Lab File: BE099386.D  
 Acq: 26 Apr 2019 19:55

Tgt Ion	Resp	Lower	Upper
202	100		
200	19.9	15.7	23.5
203	17.5	13.7	20.5

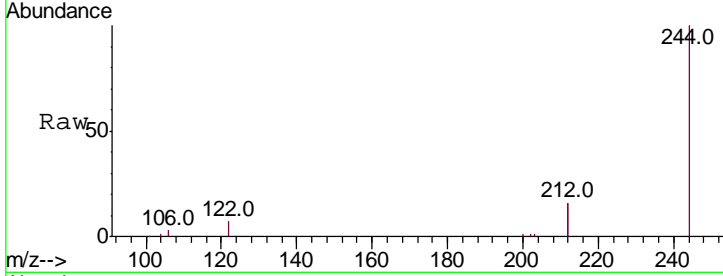






#29  
 Terphenyl-d14  
 Concen: 0.415 ng  
 RT: 19.82 min Scan# 1488  
 Delta R.T. 0.00 min  
 Lab File: BE099386.D  
 Acq: 26 Apr 2019 19:55

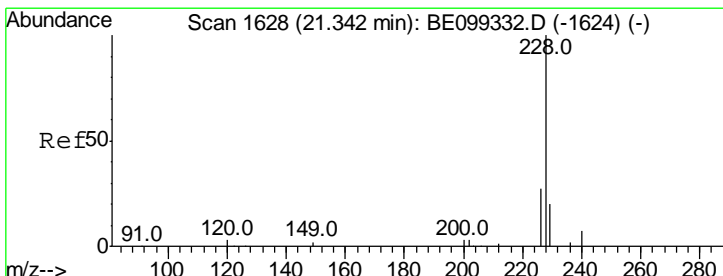
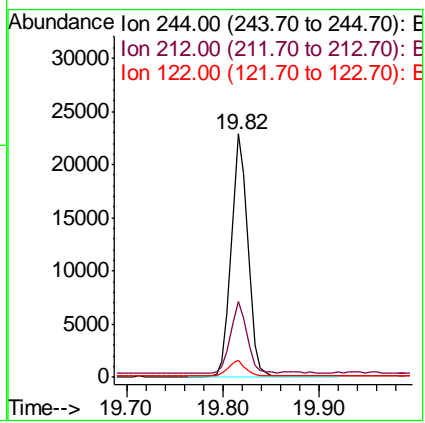
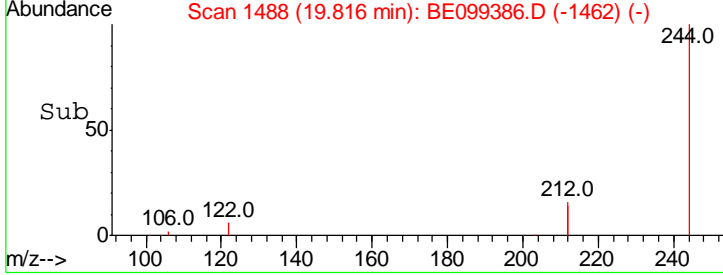
Instrument :  
 BNA\_E  
 ClientSampled :  
 SSTDCCC0.4EC



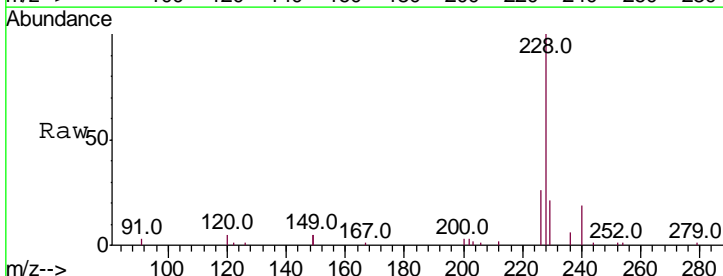
Tgt Ion: 244 Resp: 27413

Ion	Ratio	Lower	Upper
244	100		
212	31.1	22.6	33.8
122	6.9	4.6	7.0

Manual Integrations  
**APPROVED**  
 Sohil  
 4/29/2019 1:28:53 PM

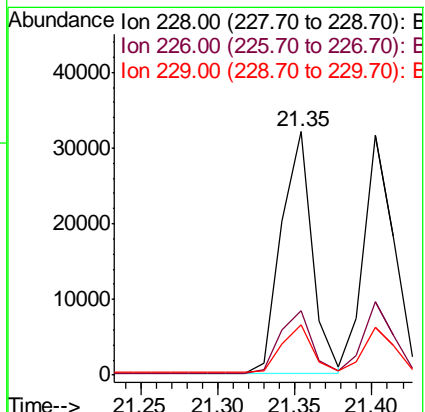
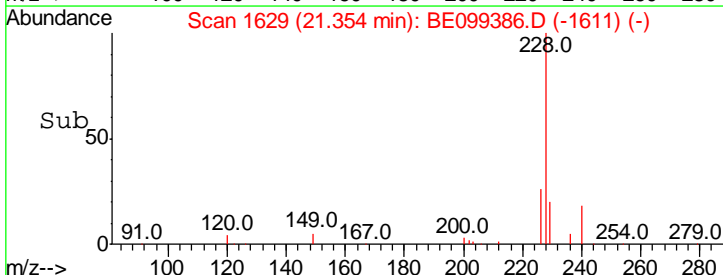


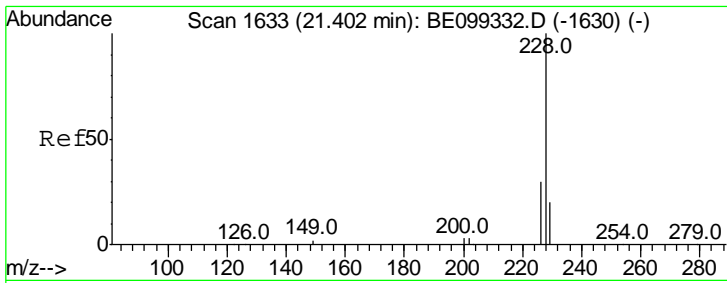
#30  
 Benzo(a)anthracene  
 Concen: 0.451 ng  
 RT: 21.35 min Scan# 1629  
 Delta R.T. 0.01 min  
 Lab File: BE099386.D  
 Acq: 26 Apr 2019 19:55



Tgt Ion: 228 Resp: 44465

Ion	Ratio	Lower	Upper
228	100		
226	26.2	22.0	33.0
229	20.8	15.8	23.8





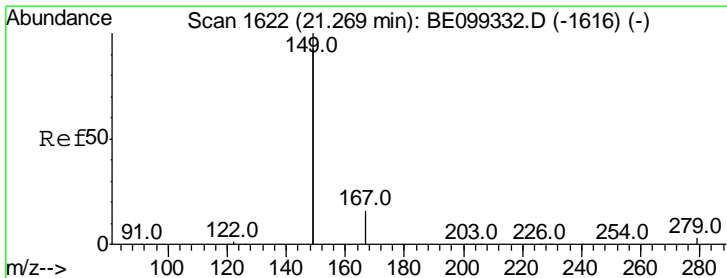
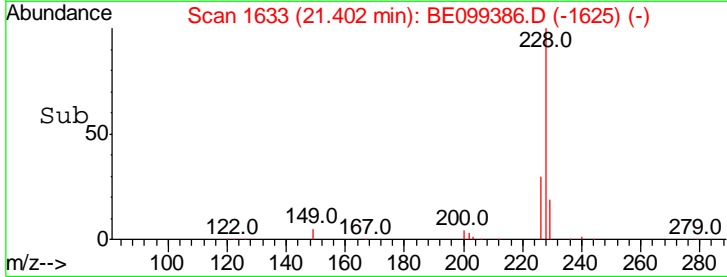
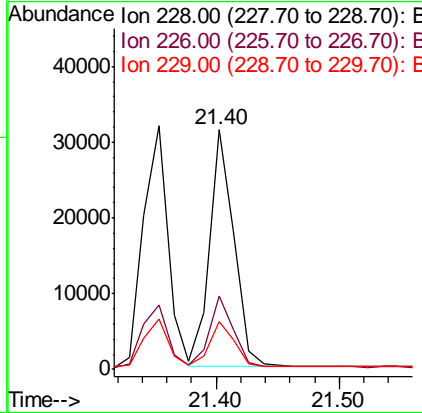
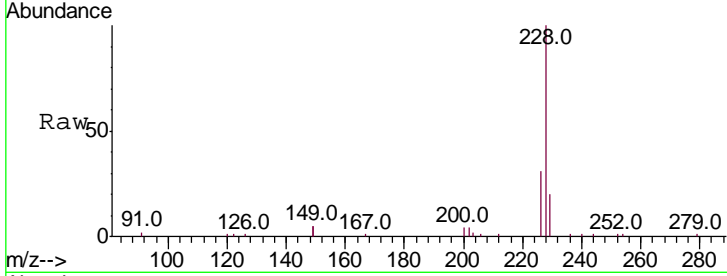
#31  
 Chrysene  
 Concen: 0.408 ng  
 RT: 21.40 min Scan# 1633  
 Delta R.T. -0.00 min  
 Lab File: BE099386.D  
 Acq: 26 Apr 2019 19:55

Instrument :  
 BNA\_E  
 ClientSampled :  
 SSTDCCC0.4EC

Tgt Ion	Resp	Lower	Upper
228	100		
226	30.6	23.4	35.2
229	20.0	16.2	24.2

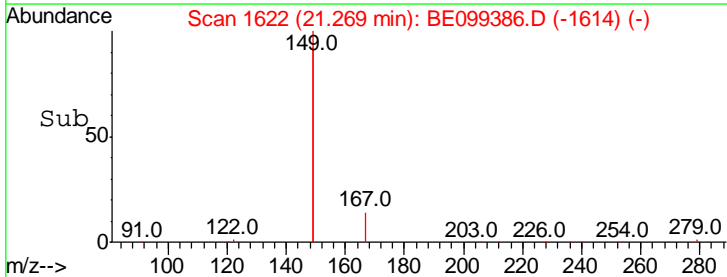
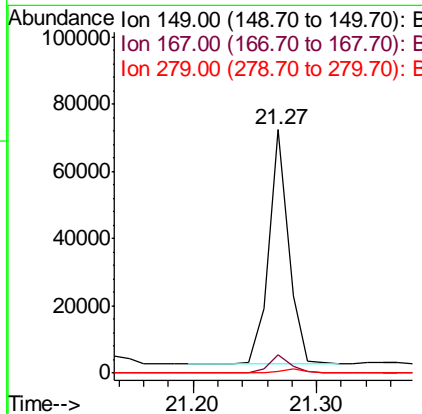
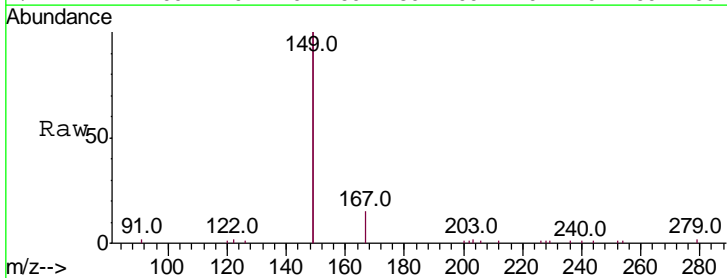
Manual Integrations  
 APPROVED

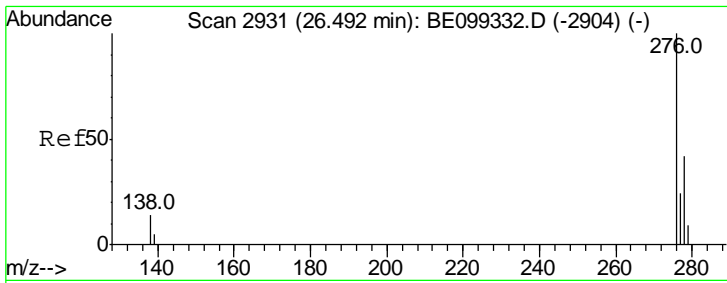
Sohil  
 4/29/2019 1:28:53 PM



#32  
 Bis(2-ethylhexyl)phthalate  
 Concen: 0.876 ng  
 RT: 21.27 min Scan# 1622  
 Delta R.T. -0.00 min  
 Lab File: BE099386.D  
 Acq: 26 Apr 2019 19:55

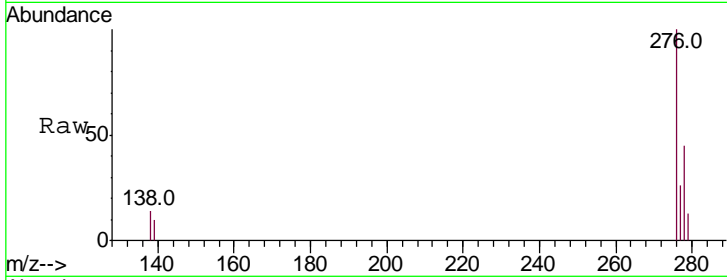
Tgt Ion	Resp	Lower	Upper
149	100		
167	7.7	6.0	9.0
279	1.4	1.1	1.7





#33  
 Indeno(1,2,3-cd)pyrene  
 Concen: 0.407 ng  
 RT: 26.52 min Scan# 2939  
 Delta R.T. 0.03 min  
 Lab File: BE099386.D  
 Acq: 26 Apr 2019 19:55

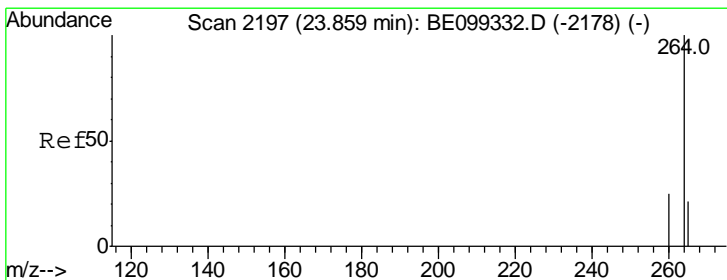
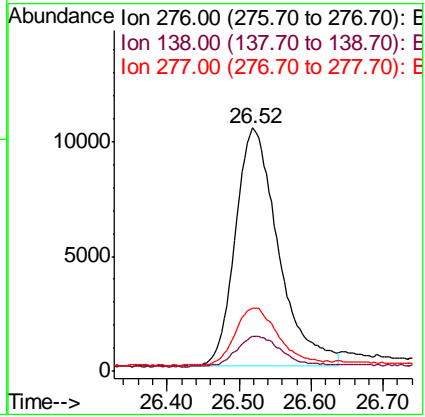
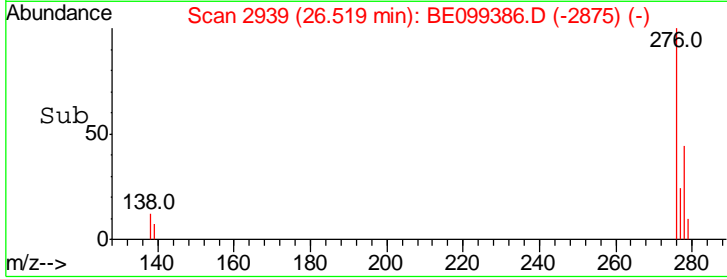
Instrument :  
 BNA\_E  
 ClientSampled :  
 SSTCCCC0.4EC



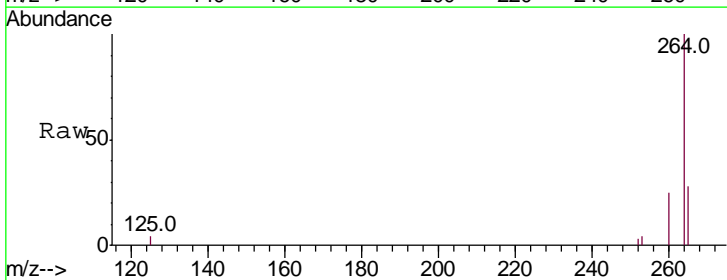
Tgt Ion: 276 Resp: 42236

Ion	Ratio	Lower	Upper
276	100		
138	12.9	12.7	19.1
277	24.2	19.6	29.4

Manual Integrations  
**APPROVED**  
 Sohil  
 4/29/2019 1:28:53 PM

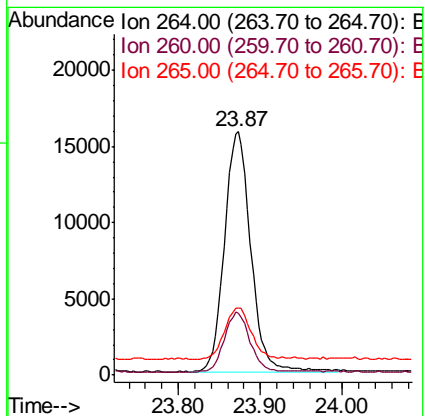
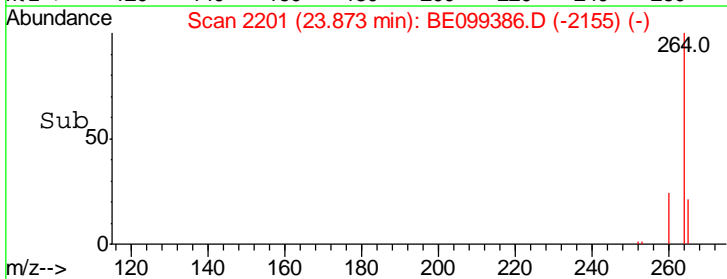


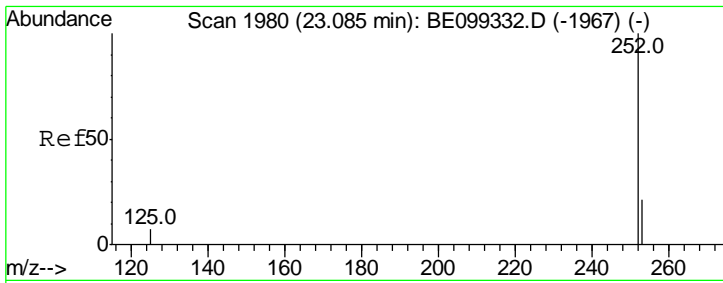
#34  
 Perylene-d12  
 Concen: 0.400 ng  
 RT: 23.87 min Scan# 2201  
 Delta R.T. 0.01 min  
 Lab File: BE099386.D  
 Acq: 26 Apr 2019 19:55



Tgt Ion: 264 Resp: 34942

Ion	Ratio	Lower	Upper
264	100		
260	25.3	20.1	30.1
265	27.5	19.9	29.9





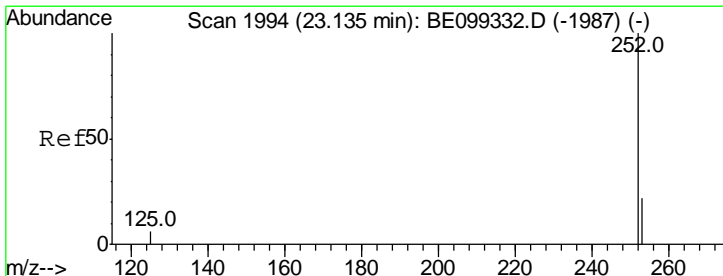
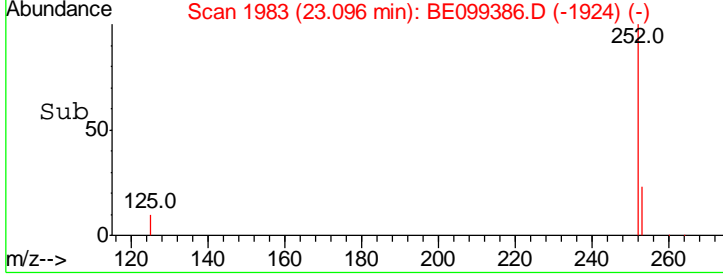
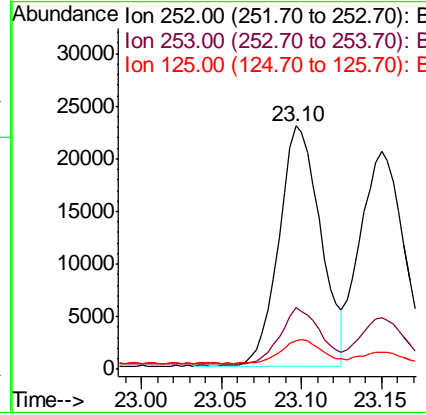
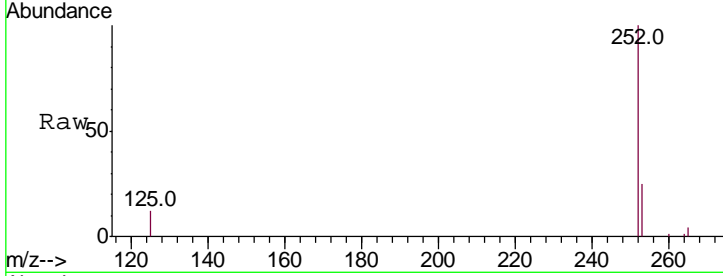
#35  
 Benzo(b)fluoranthene  
 Concen: 0.393 ng m  
 RT: 23.10 min Scan# 1983  
 Delta R.T. 0.01 min  
 Lab File: BE099386.D  
 Acq: 26 Apr 2019 19:55

**Instrument :**  
 BNA\_E  
**ClientSampled :**  
 SSTDCCC0.4EC

Tgt Ion	Resp	Lower	Upper
252	100		
253	25.1	17.3	25.9
125	11.9	5.8	8.6#

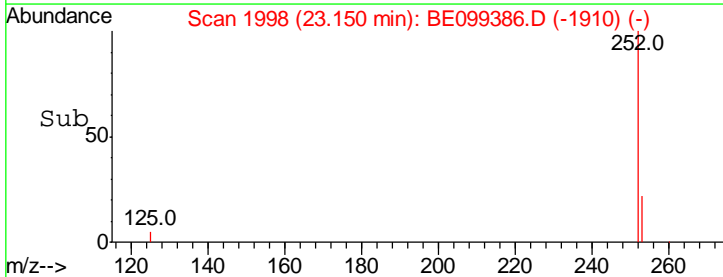
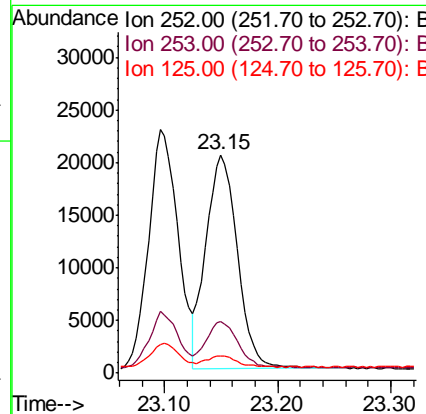
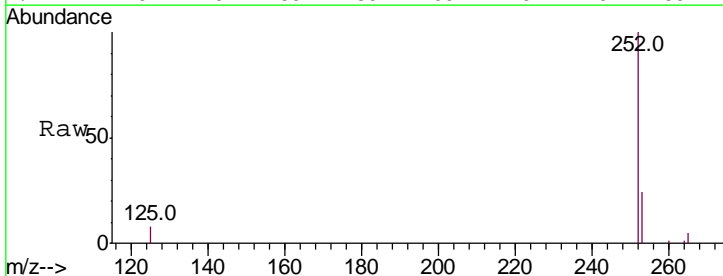
**Manual Integrations**  
**APPROVED**

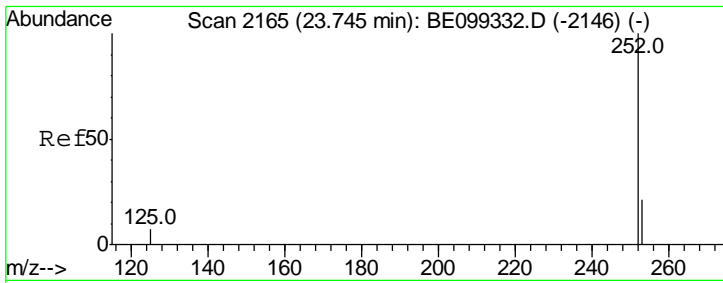
Sohil  
 4/29/2019 1:28:53 PM



#36  
 Benzo(k)fluoranthene  
 Concen: 0.371 ng  
 RT: 23.15 min Scan# 1998  
 Delta R.T. 0.01 min  
 Lab File: BE099386.D  
 Acq: 26 Apr 2019 19:55

Tgt Ion	Resp	Lower	Upper
252	100		
253	23.8	18.4	27.6
125	8.0	5.4	8.0



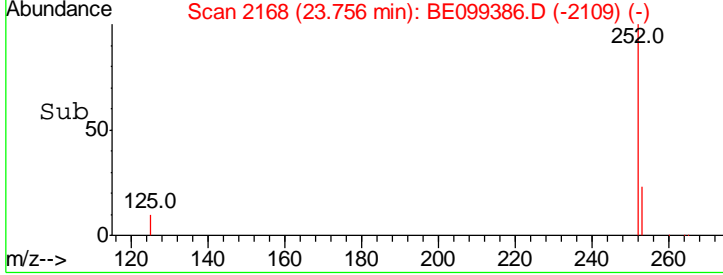
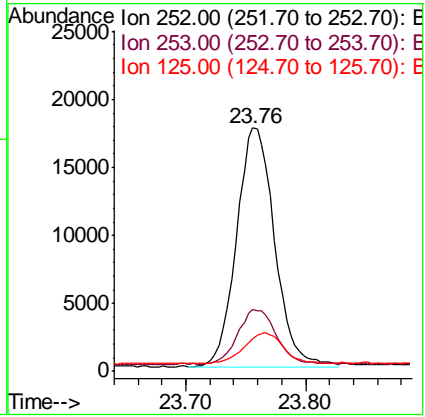
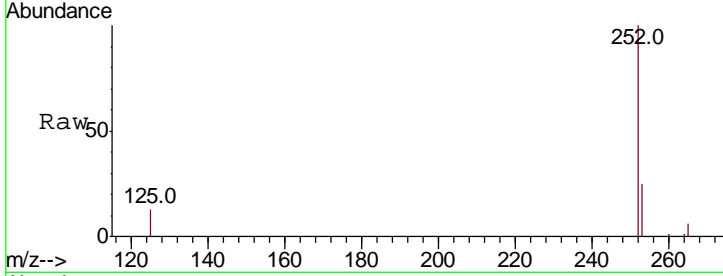


#37  
 Benzo(a)pyrene  
 Concen: 0.406 ng  
 RT: 23.76 min Scan# 2168  
 Delta R.T. 0.01 min  
 Lab File: BE099386.D  
 Acq: 26 Apr 2019 19:55

**Instrument :**  
 BNA\_E  
**ClientSampled :**  
 SSTCCCC0.4EC

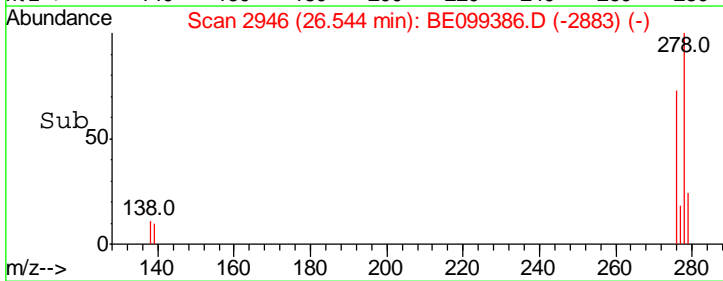
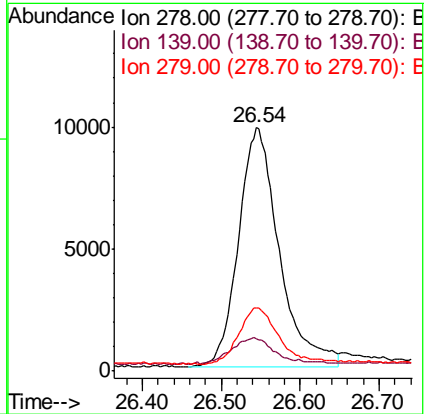
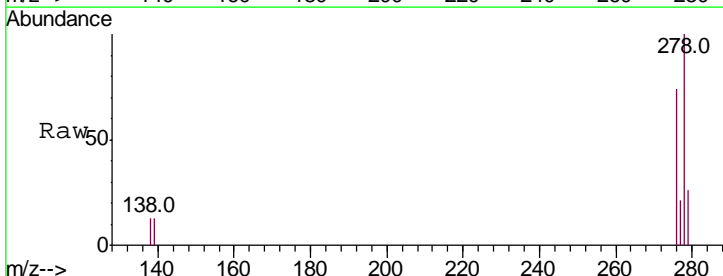
Tgt Ion	Resp	Lower	Upper
252	100		
253	25.2	17.6	26.4
125	13.5	6.5	9.7#

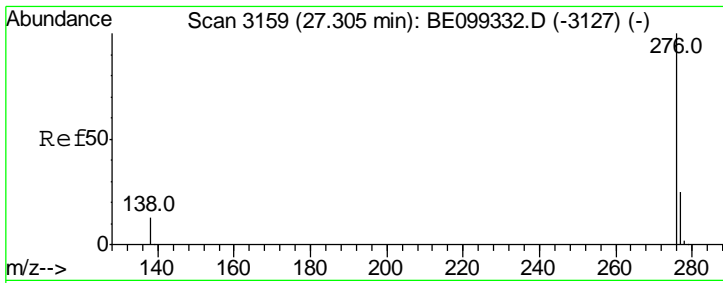
**Manual Integrations**  
**APPROVED**  
 Sohil  
 4/29/2019 1:28:53 PM



#38  
 Dibenzo(a,h)anthracene  
 Concen: 0.357 ng  
 RT: 26.54 min Scan# 2946  
 Delta R.T. 0.02 min  
 Lab File: BE099386.D  
 Acq: 26 Apr 2019 19:55

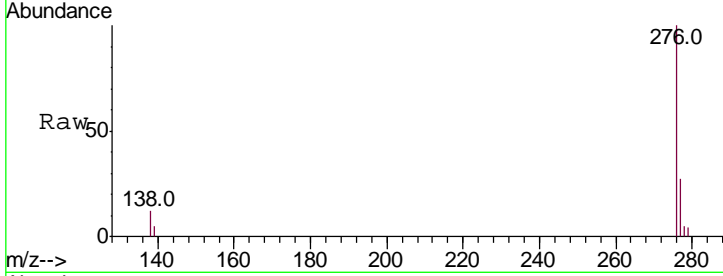
Tgt Ion	Resp	Lower	Upper
278	100		
139	13.2	8.5	12.7#
279	26.0	19.8	29.8





#39  
 Benzo(a,h,i)perylene  
 Concen: 0.315 ng  
 RT: 27.34 min Scan# 3170  
 Delta R.T. 0.04 min  
 Lab File: BE099386.D  
 Acq: 26 Apr 2019 19:55

**Instrument :**  
 BNA\_E  
**ClientSampled :**  
 SSTDCCC0.4EC



Tot Ion: 276 Resp: 31280

Ion	Ratio	Lower	Upper
276	100		
277	27.4	20.0	30.0
138	12.4	11.1	16.7

**Manual Integrations**  
**APPROVED**  
 Sohil  
 4/29/2019 1:28:53 PM

