

Data Path : Z:\SVOASRV\HPCHEM1\BNA E\DATA\BE050719\
 Data File : BE099557.D
 Acq On : 7 May 2019 8:59
 Operator : JU/SJ
 Sample : SSTDCCC0.4
 Misc :
 ALS Vial : 2 Sample Multiplier: 1

Instrument :
 BNA_E
 ClientSampled :
 SSTDCCC0.4

Manual Integrations
 APPROVED

mohammad
 5/8/2019 3:59:32 PM

Quant Time: May 07 15:34:13 2019

Quant Method : Z:\SVOASRV\HPCHEM1\BNA E\METHODS\8270-SIM-BE050719.M

Quant Title : ASP BNA STANDARDS FOR 5 POINT CALIBRATION

QLast Update : Tue May 07 14:10:11 2019

Response via : Initial Calibration

Internal Standards	R.T.	QIon	Response	Conc	Units	Dev(Min)
1) 1,4-Dichlorobenzene-d4	7.83	152	1815	0.40	ng	0.00
7) Naphthalene-d8	10.63	136	6477	0.40	ng	0.00
13) Acenaphthene-d10	14.50	164	4558	0.40	ng	0.00
19) Phenanthrene-d10	17.24	188	13111	0.40	ng	0.00
27) Chrysene-d12	21.43	240	19467	0.40	ng	0.00
34) Perylene-d12	23.98	264	23081	0.40	ng	0.00

System Monitoring Compounds

4) 2-Fluorophenol	5.38	112	2127	0.42	ng	0.00
5) Phenol-d6	6.99	99	2820	0.43	ng	0.00
8) Nitrobenzene-d5	8.98	82	2583	0.41	ng	0.00
11) 2-Methylnaphthalene-d10	12.22	152	4604	0.41	ng	0.00
14) 2,4,6-Tribromophenol	15.98	330	1187	0.39	ng	0.00
15) 2-Fluorobiphenyl	13.12	172	7147	0.41	ng	0.00
25) Fluoranthene-d10	19.28	212	73699	0.42	ng	0.00
29) Terphenyl-d14	19.87	244	15810	0.44	ng	0.00

Target Compounds

Target Compounds	R.T.	QIon	Response	Conc	Units	Qvalue
2) 1,4-Dioxane	3.31	88	1032	0.403	ng	# 95
3) n-Nitrosodimethylamine	3.63	42	681	0.401	ng	# 99
6) bis(2-Chloroethyl)ether	7.25	93	2316	0.420	ng	94
9) Naphthalene	10.68	128	136927	1.996	ng	99
10) Hexachlorobutadiene	10.95	225	2125	0.426	ng	96
12) 2-Methylnaphthalene	12.31	142	21366	1.837	ng	99
16) Acenaphthylene	14.21	152	14828	0.674	ng	99
17) Acenaphthene	14.56	154	5720	0.466	ng	94
18) Fluorene	15.54	166	12471	0.711	ng	97
20) 4-Bromophenyl-phenylether	16.44	248	3131	0.420	ng	# 71
21) Hexachlorobenzene	16.54	284	3044	0.411	ng	98
22) Pentachlorophenol	16.89	266	1275	0.418	ng	98
23) Phenanthrene	17.28	178	39390	1.219	ng	99
24) Anthracene	17.37	178	17870	0.575	ng	98
26) Fluoranthene	19.30	202	33172	0.667	ng	99
28) Pyrene	19.67	202	40359	0.774	ng	99
30) Benzo(a)anthracene	21.41	228	35291	0.585	ng	98
31) Chrysene	21.46	228	33170	0.557	ng	99
32) Bis(2-ethylhexyl)phthalate	21.33	149	45487	0.476	ng	99
33) Indeno(1,2,3-cd)pyrene	26.69	276	34907	0.494	ng	100
35) Benzo(b)fluoranthene	23.19	252	30776m	0.483	ng	
36) Benzo(k)fluoranthene	23.24	252	28725	0.458	ng	97
37) Benzo(a)pyrene	23.86	252	30837	0.502	ng	# 97
38) Dibenzo(a,h)anthracene	26.71	278	27398	0.431	ng	# 96
39) Benzo(g,h,i)perylene	27.52	276	29094	0.457	ng	99

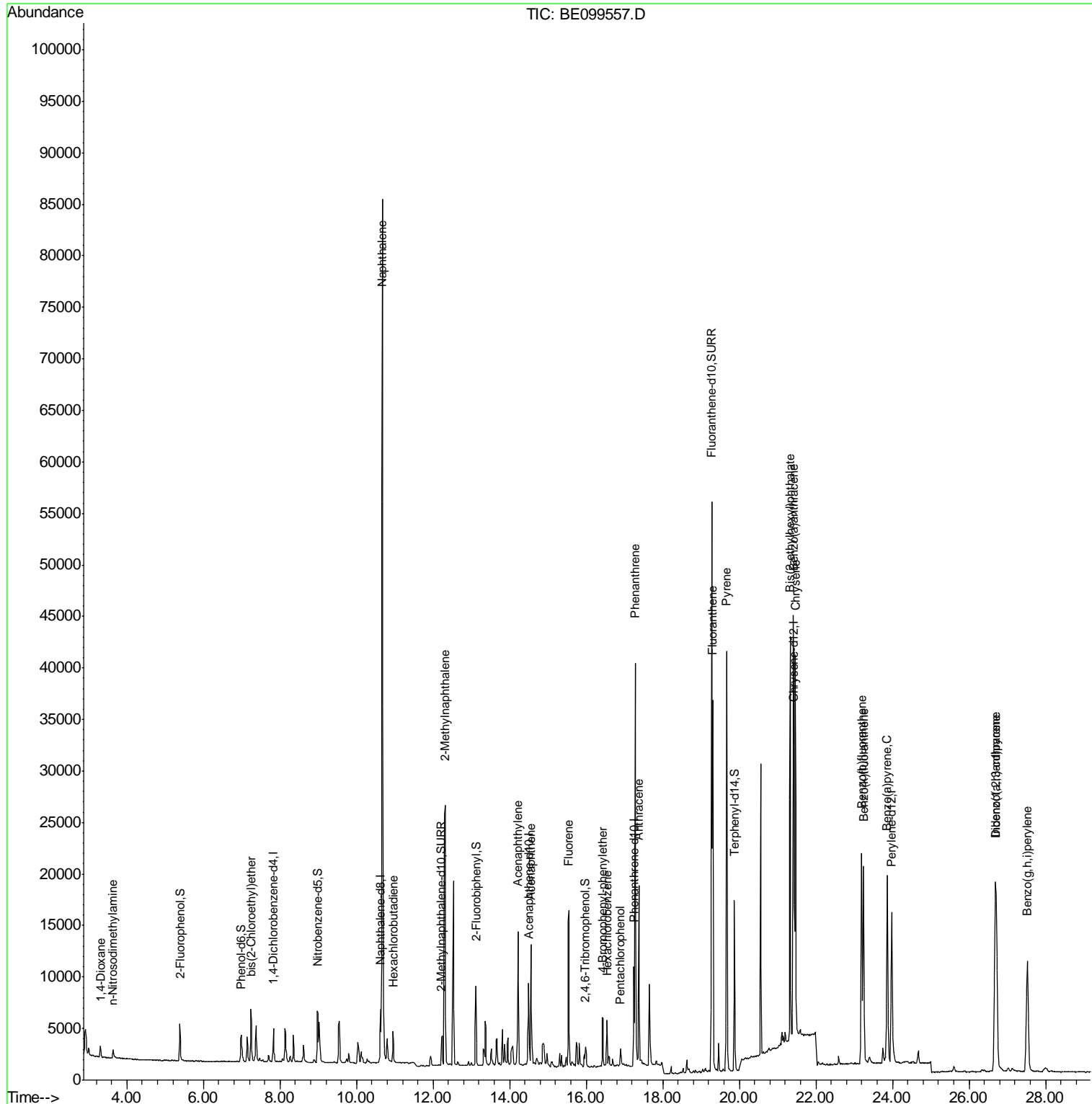
(#) = qualifier out of range (m) = manual integration (+) = signals summed

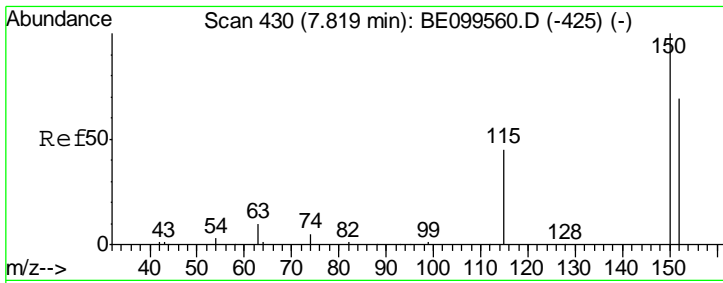
Data Path : Z:\SVOASRV\HPCHEM1\BNA E\DATA\BE050719\
 Data File : BE099557.D
 Acq On : 7 May 2019 8:59
 Operator : JU/SJ
 Sample : SSTDCCC0.4
 Misc :
 ALS Vial : 2 Sample Multiplier: 1

Instrument :
 BNA_E
Client Sampled :
 SSTDCCC0.4

Manual Integrations
APPROVED
 mohammad
 5/8/2019 3:59:32 PM

Quant Time: May 07 15:34:13 2019
 Quant Method : Z:\SVOASRV\HPCHEM1\BNA E\METHODS\8270-SIM-BE050719.M
 Quant Title : ASP BNA STANDARDS FOR 5 POINT CALIBRATION
 QLast Update : Tue May 07 14:10:11 2019
 Response via : Initial Calibration





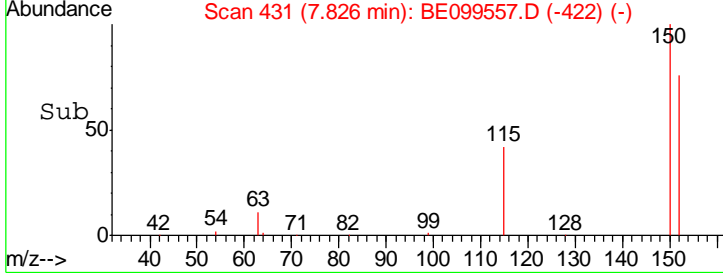
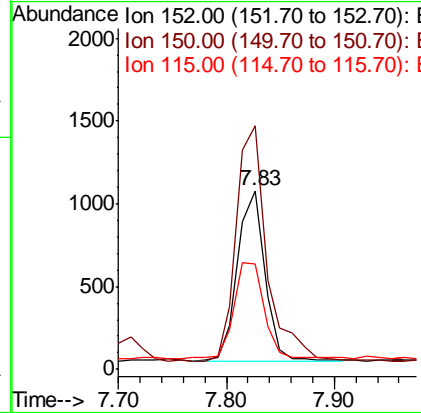
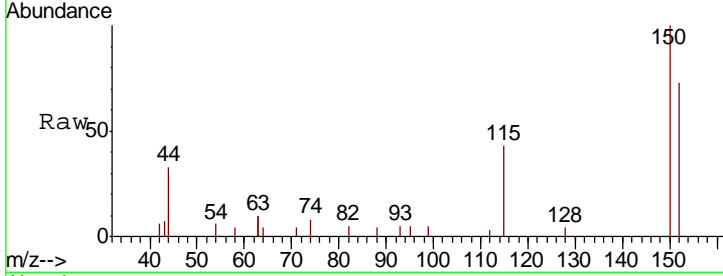
#1
 1,4-Dichlorobenzene-d4
 Concen: 0.400 ng
 RT: 7.83 min Scan# 431
 Delta R.T. 0.01 min
 Lab File: BE099557.D
 Acq: 7 May 2019 8:59

Instrument :
 BNA_E
 ClientSampled :
 SSTDCCC0.4

Tgt Ion	Resp	Lower	Upper
152	1815		
152	100		
150	136.1	113.8	170.6
115	58.9	54.2	81.2

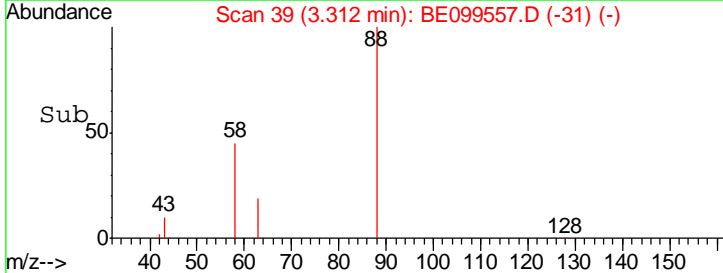
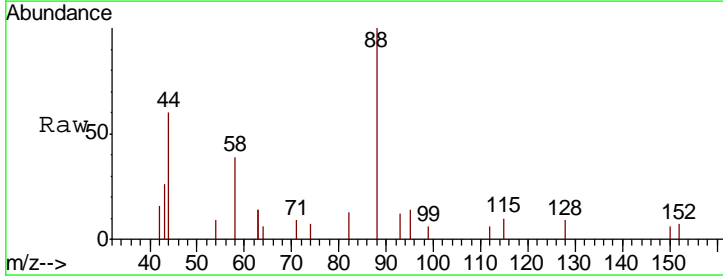
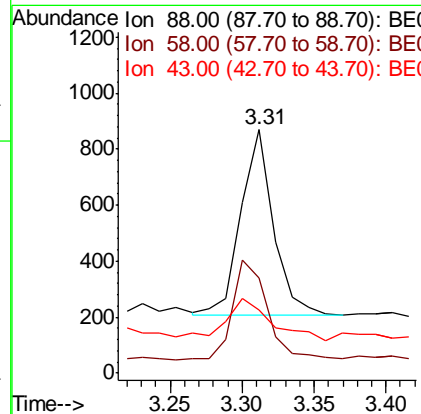
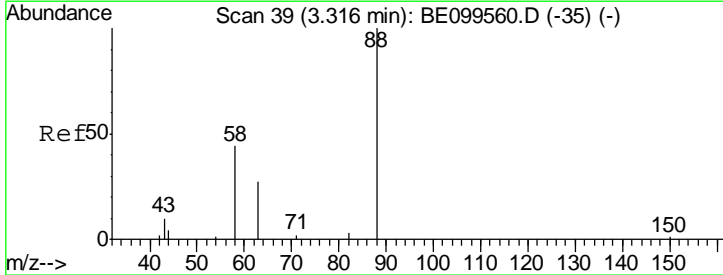
Manual Integrations
 APPROVED

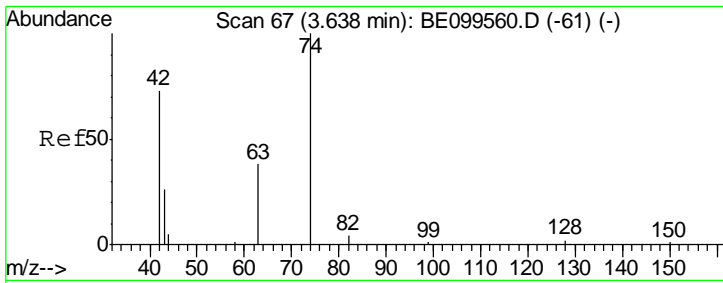
mohammad
 5/8/2019 3:59:32 PM



#2
 1,4-Dioxane
 Concen: 0.403 ng
 RT: 3.31 min Scan# 39
 Delta R.T. -0.00 min
 Lab File: BE099557.D
 Acq: 7 May 2019 8:59

Tgt Ion	Resp	Lower	Upper
88	1032		
88	100		
58	57.0	46.6	69.8
43	32.2	20.3	30.5#





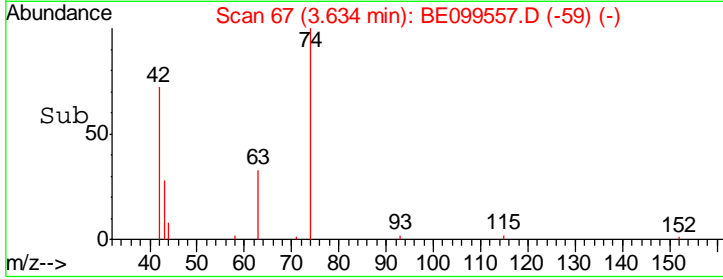
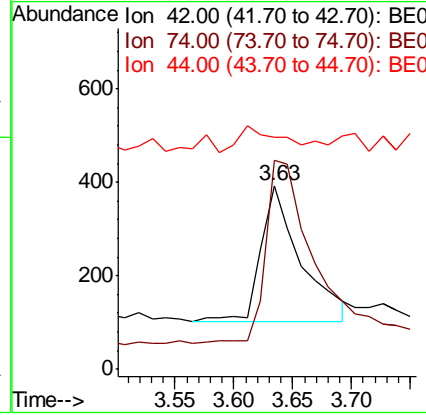
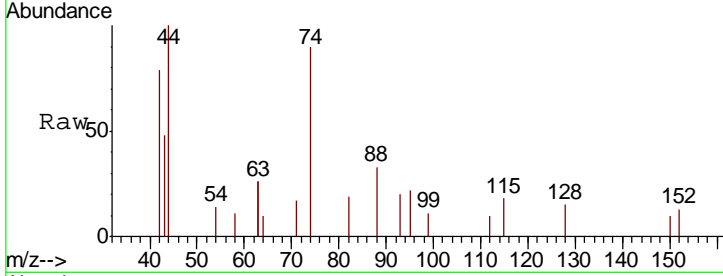
#3
 n-Nitrosodimethylamine
 Concen: 0.401 ng
 RT: 3.63 min Scan# 67
 Delta R.T. -0.00 min
 Lab File: BE099557.D
 Acq: 7 May 2019 8:59

Instrument :
 BNA_E
ClientSampled :
 SSTDCCC0.4

Tgt Ion	Ratio	Lower	Upper
42	100		
74	152.6	121.3	181.9
44	0.0	0.0	0.0

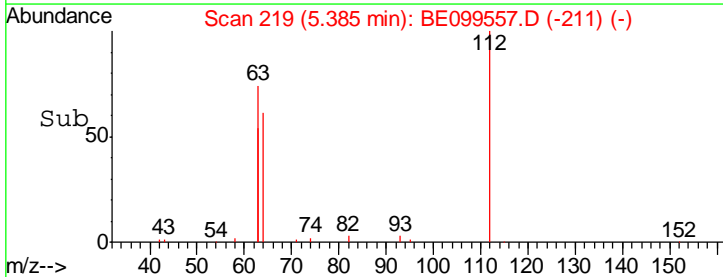
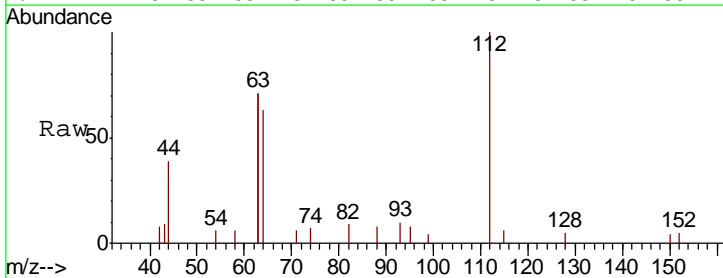
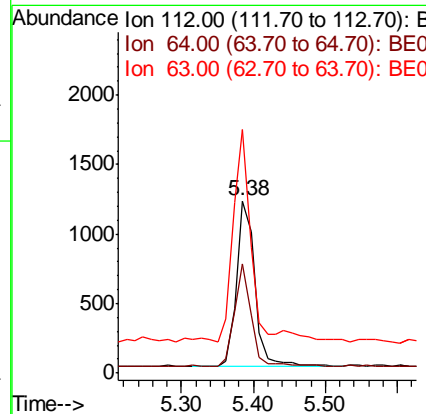
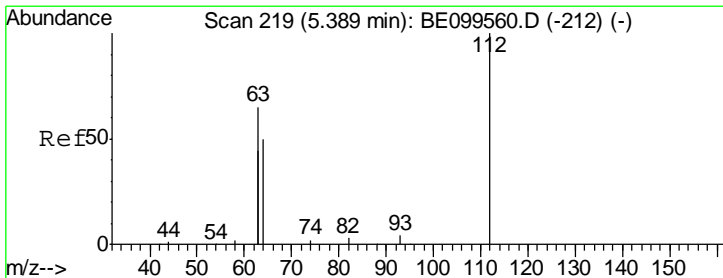
Manual Integrations
APPROVED

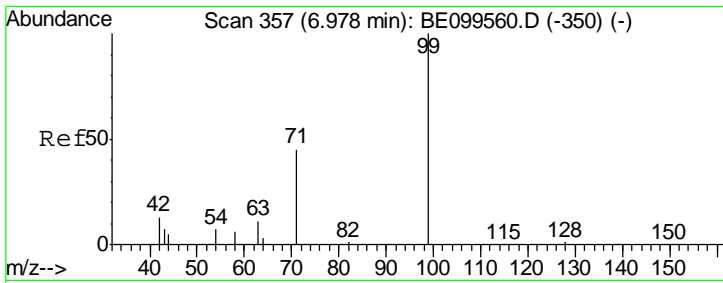
mohammad
 5/8/2019 3:59:32 PM



#4
 2-Fluorophenol
 Concen: 0.423 ng
 RT: 5.38 min Scan# 219
 Delta R.T. -0.00 min
 Lab File: BE099557.D
 Acq: 7 May 2019 8:59

Tgt Ion	Ratio	Lower	Upper
112	100		
64	54.2	46.3	69.5
63	114.1	99.6	149.4





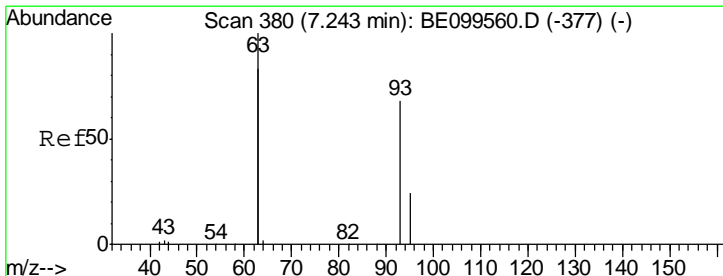
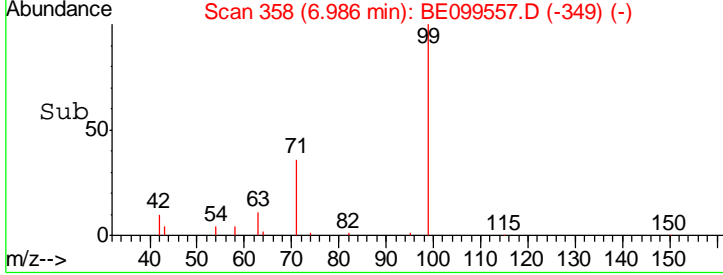
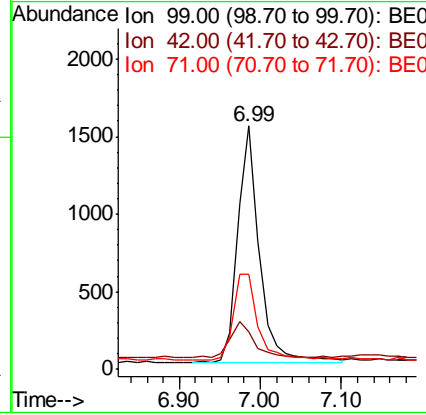
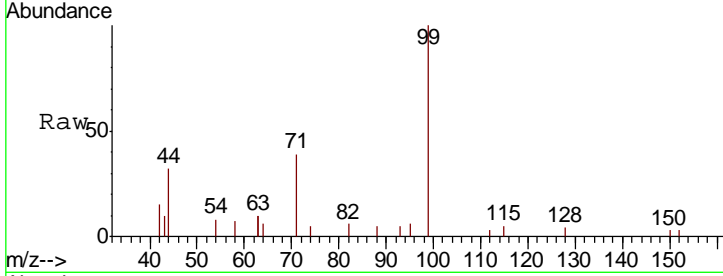
#5
 Phenol-d6
 Concen: 0.426 ng
 RT: 6.99 min Scan# 358
 Delta R.T. 0.01 min
 Lab File: BE099557.D
 Acq: 7 May 2019 8:59

Instrument :
 BNA_E
ClientSampled :
 SSTDCCC0.4

Tgt Ion	Resp	Lower	Upper
99	2820		
99	100		
42	17.0	13.4	20.0
71	41.9	34.2	51.2

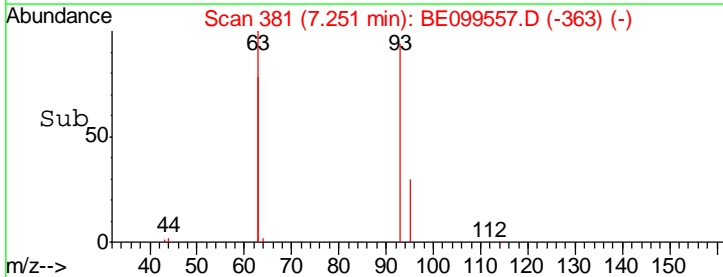
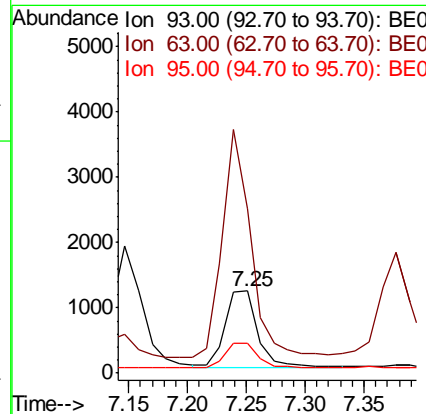
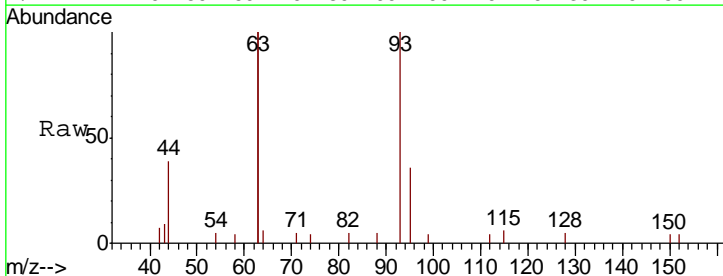
Manual Integrations
APPROVED

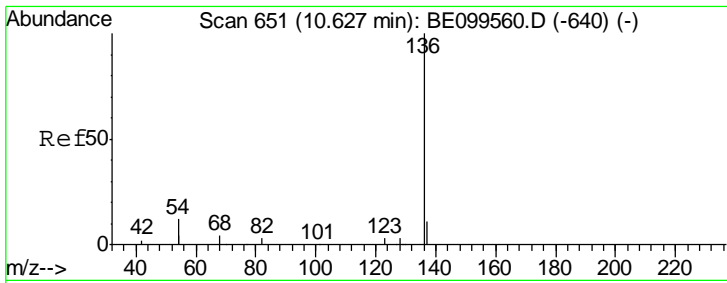
mohammad
 5/8/2019 3:59:32 PM



#6
 bis(2-Chloroethyl)ether
 Concen: 0.420 ng
 RT: 7.25 min Scan# 381
 Delta R.T. 0.01 min
 Lab File: BE099557.D
 Acq: 7 May 2019 8:59

Tgt Ion	Resp	Lower	Upper
93	2316		
93	100		
63	250.5	209.0	313.4
95	32.2	26.9	40.3





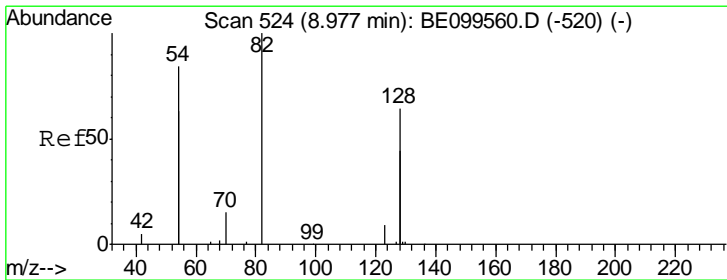
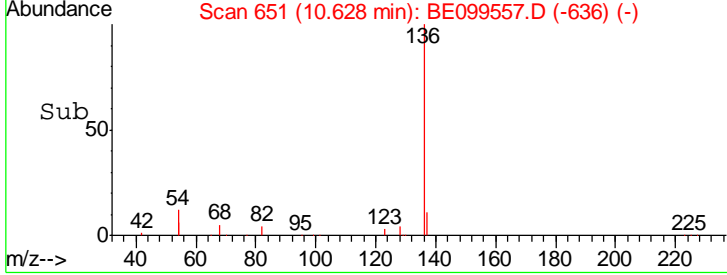
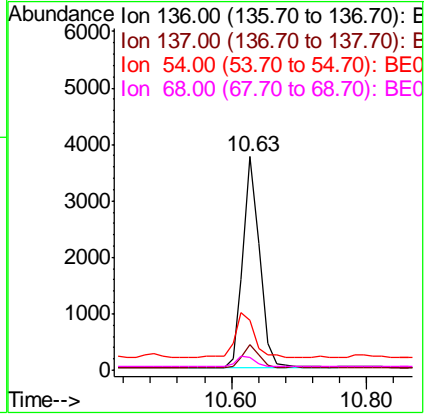
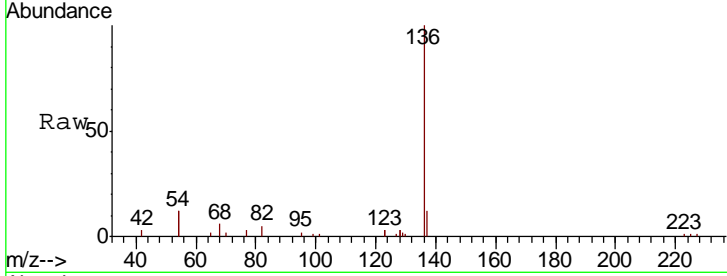
#7
 Naphthalene-d8
 Concen: 0.400 ng
 RT: 10.63 min Scan# 651
 Delta R.T. 0.00 min
 Lab File: BE099557.D
 Acq: 7 May 2019 8:59

Instrument :
 BNA_E
ClientSampled :
 SSTDCCC0.4

Tgt Ion	Resp	Lower	Upper
136	100		
137	12.1	10.0	15.0
54	23.6	18.6	28.0
68	6.2	4.6	6.8

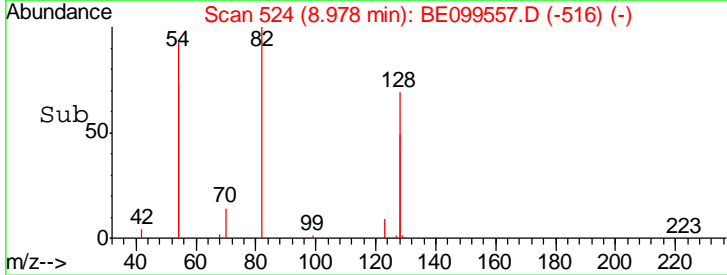
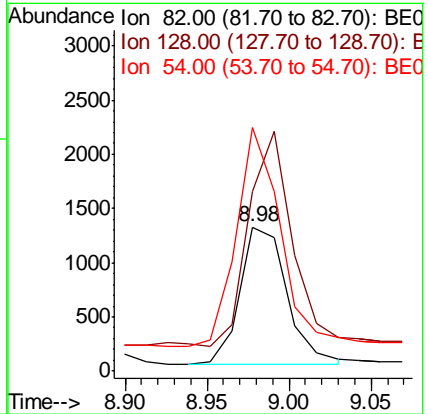
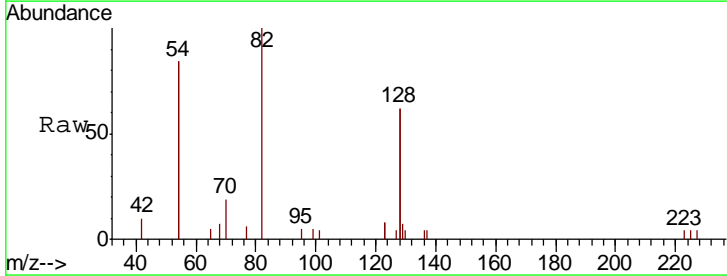
Manual Integrations
APPROVED

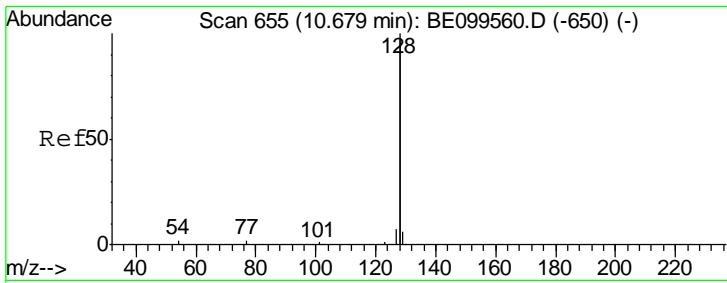
mohammad
 5/8/2019 3:59:32 PM



#8
 Nitrobenzene-d5
 Concen: 0.414 ng
 RT: 8.98 min Scan# 524
 Delta R.T. 0.00 min
 Lab File: BE099557.D
 Acq: 7 May 2019 8:59

Tgt Ion	Resp	Lower	Upper
82	100		
128	124.4	97.6	146.4
54	168.7	127.4	191.2





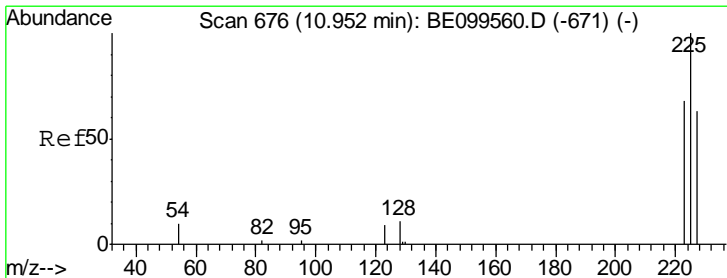
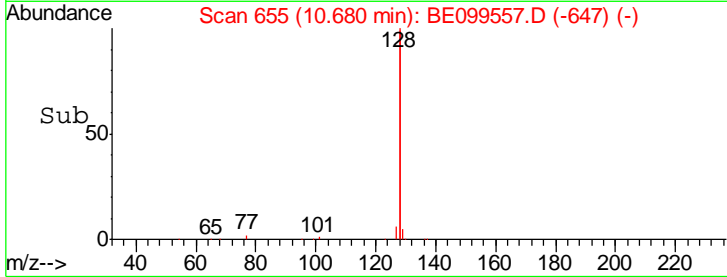
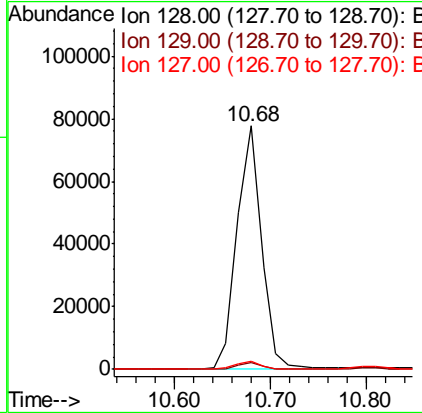
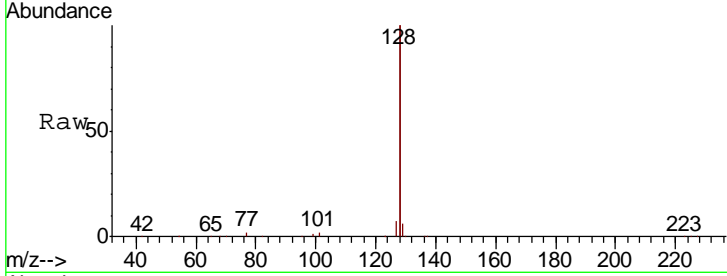
#9
 Naphthalene
 Concen: 1.996 ng
 RT: 10.68 min Scan# 655
 Delta R.T. 0.00 min
 Lab File: BE099557.D
 Acq: 7 May 2019 8:59

Instrument :
 BNA_E
ClientSampled :
 SSTDCCC0.4

Tgt Ion	Ratio	Lower	Upper
128	100		
129	2.8	2.6	3.8
127	3.3	3.0	4.4

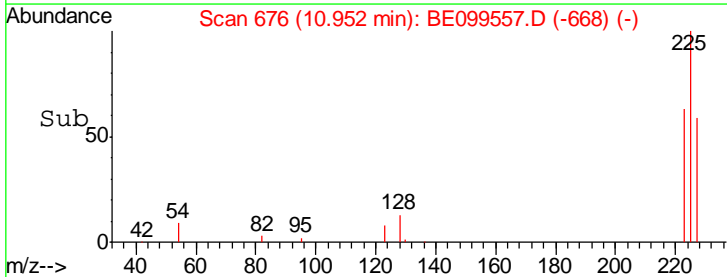
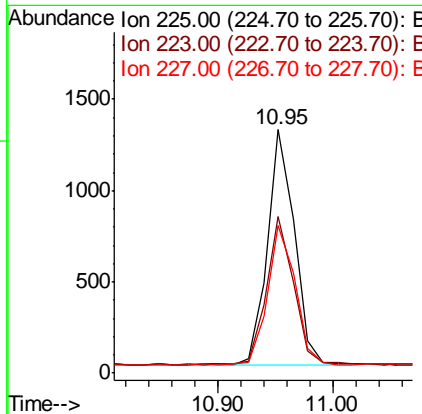
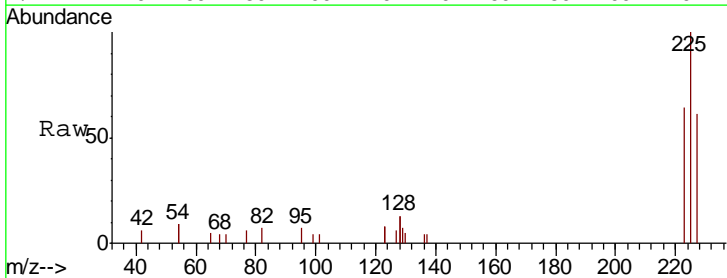
Manual Integrations
APPROVED

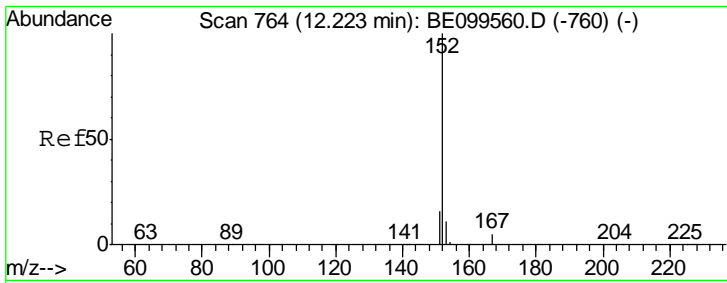
mohammad
 5/8/2019 3:59:32 PM



#10
 Hexachlorobutadiene
 Concen: 0.426 ng
 RT: 10.95 min Scan# 676
 Delta R.T. 0.00 min
 Lab File: BE099557.D
 Acq: 7 May 2019 8:59

Tgt Ion	Ratio	Lower	Upper
225	100		
223	62.8	53.0	79.6
227	60.8	51.4	77.0





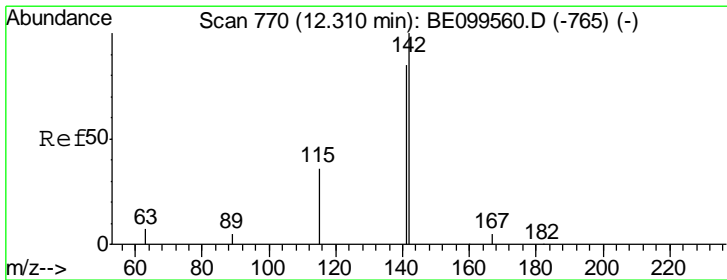
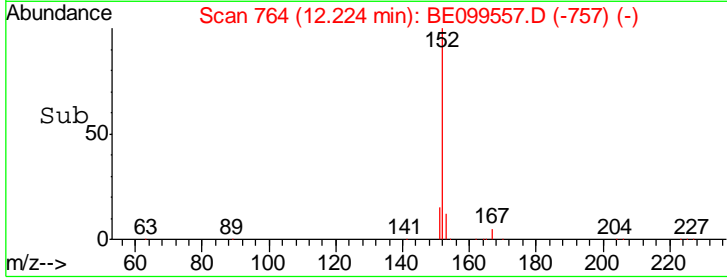
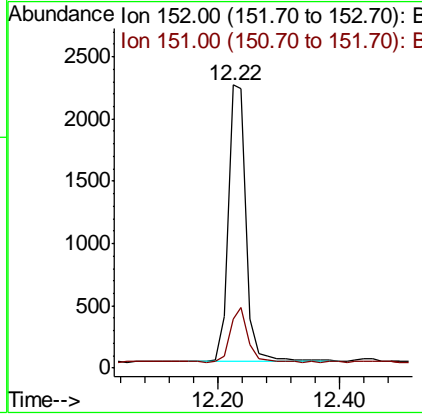
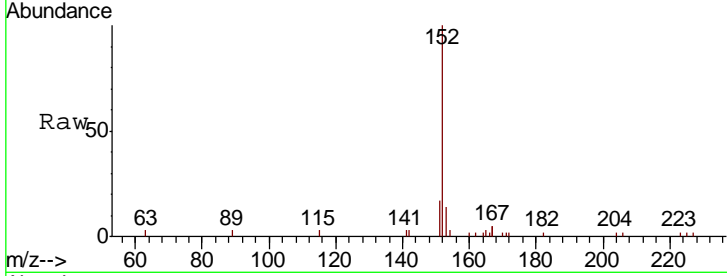
#11
 2-Methylnaphthalene-d10
 Concen: 0.408 ng
 RT: 12.22 min Scan# 764
 Delta R.T. 0.00 min
 Lab File: BE099557.D
 Acq: 7 May 2019 8:59

Instrument :
 BNA_E
ClientSampled :
 SSTDCCC0.4

Tgt Ion	Resp	Lower	Upper
152	4604		
151	19.8	15.8	23.8

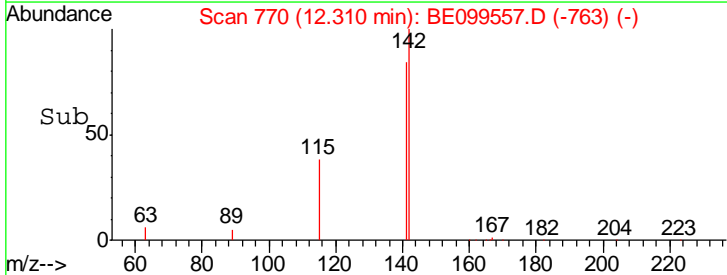
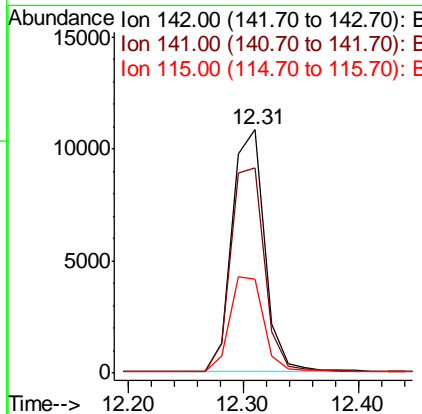
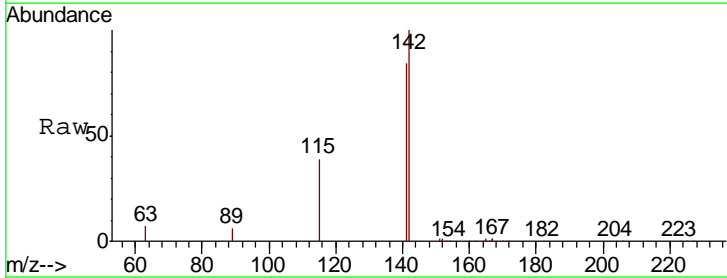
Manual Integrations
APPROVED

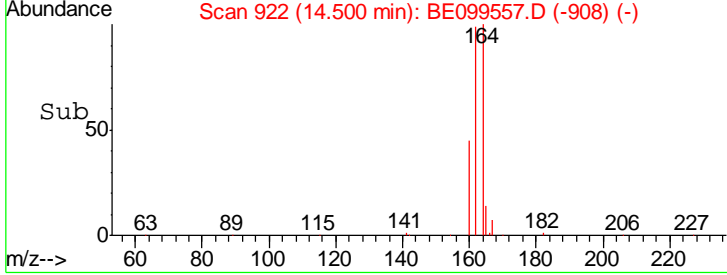
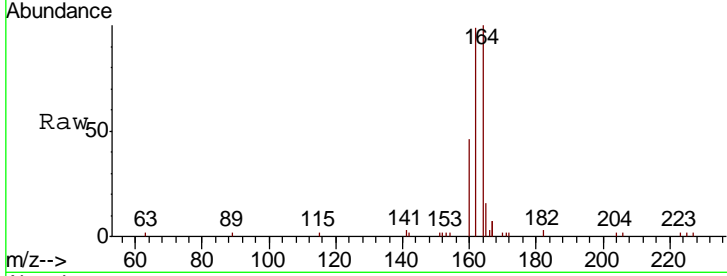
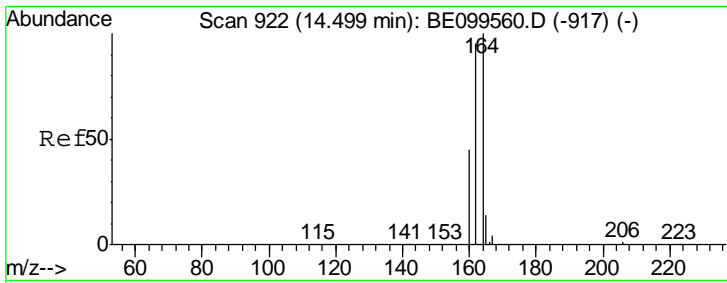
mohammad
 5/8/2019 3:59:32 PM



#12
 2-Methylnaphthalene
 Concen: 1.837 ng
 RT: 12.31 min Scan# 770
 Delta R.T. 0.00 min
 Lab File: BE099557.D
 Acq: 7 May 2019 8:59

Tgt Ion	Resp	Lower	Upper
142	21366		
141	84.4	68.1	102.1
115	38.5	30.8	46.2



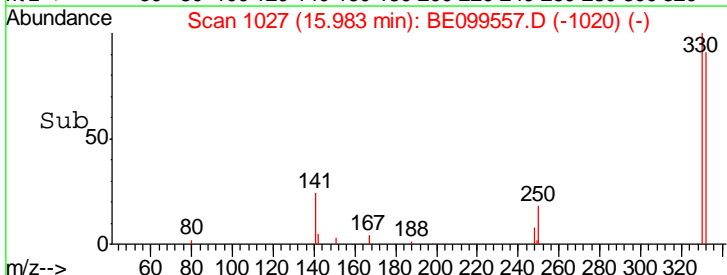
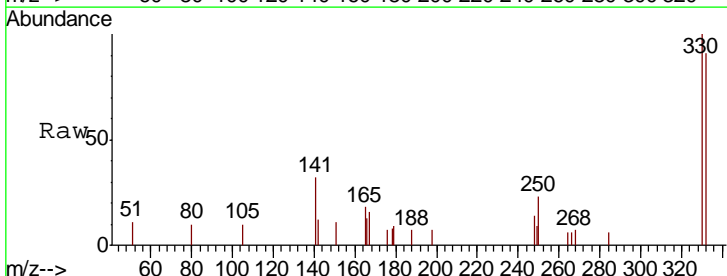
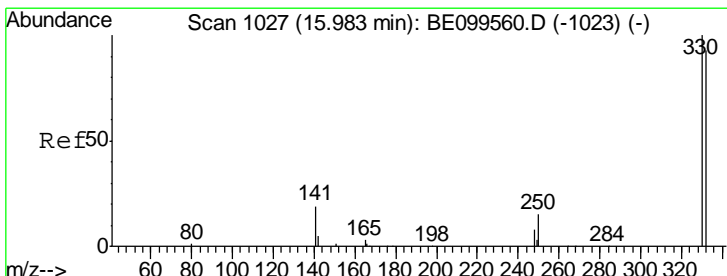
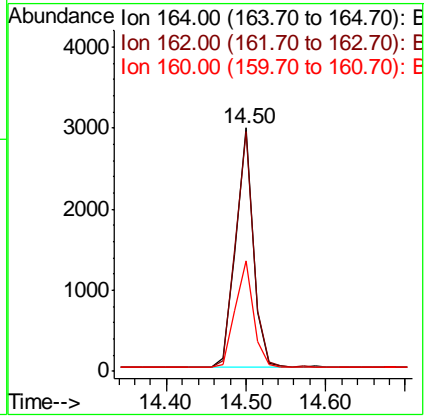


#13
 Acenaphthene-d10
 Concen: 0.400 ng
 RT: 14.50 min Scan# 922
 Delta R.T. 0.00 min
 Lab File: BE099557.D
 Acq: 7 May 2019 8:59

Tgt Ion	Resp	Lower	Upper
164	100		
162	98.7	76.4	114.6
160	45.5	36.6	55.0

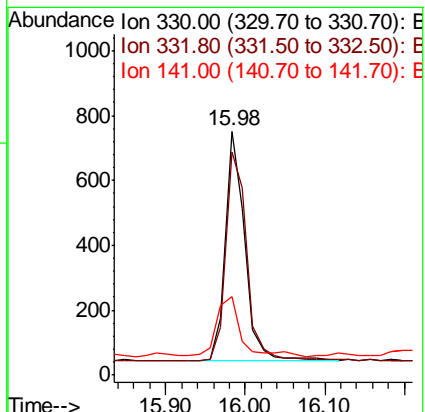
Instrument : BNA_E
 ClientSampleId : SSTDCCC0.4

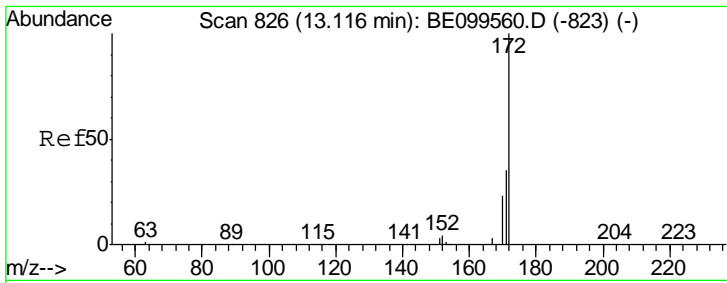
Manual Integrations APPROVED
 mohammad
 5/8/2019 3:59:32 PM



#14
 2,4,6-Tribromophenol
 Concen: 0.391 ng
 RT: 15.98 min Scan# 1027
 Delta R.T. -0.00 min
 Lab File: BE099557.D
 Acq: 7 May 2019 8:59

Tgt Ion	Resp	Lower	Upper
330	100		
332	100.7	77.7	116.5
141	31.6	26.1	39.1





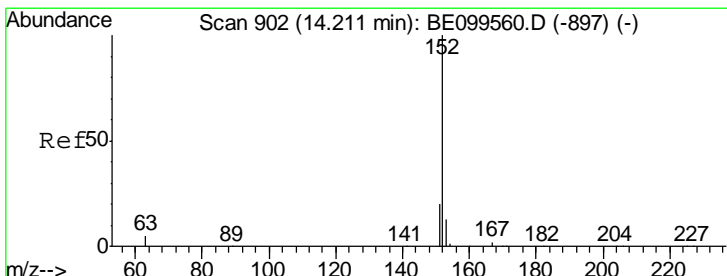
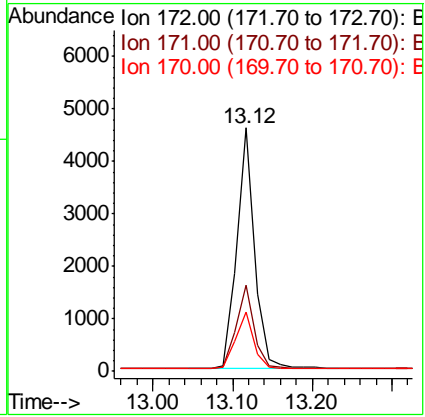
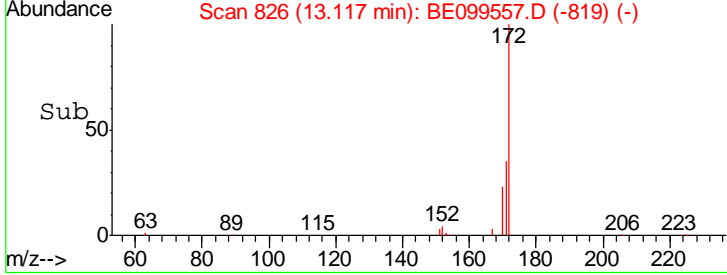
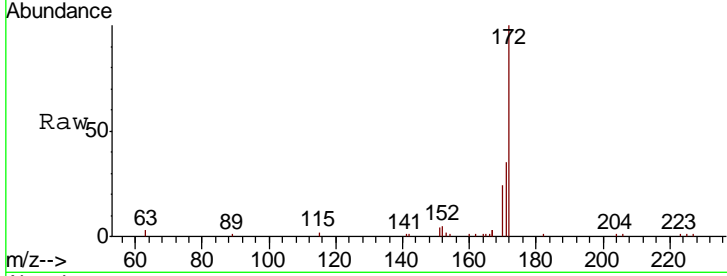
#15
 2-Fluorobiphenyl
 Concen: 0.414 ng
 RT: 13.12 min Scan# 826
 Delta R.T. 0.00 min
 Lab File: BE099557.D
 Acq: 7 May 2019 8:59

Instrument :
 BNA_E
ClientSampled :
 SSTDCCC0.4

Tgt Ion	Resp	Lower	Upper
172	100		
171	35.4	28.4	42.6
170	24.1	18.8	28.2

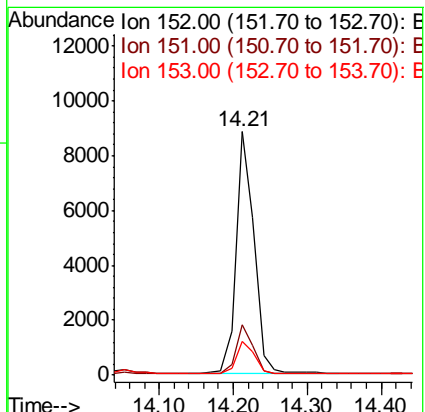
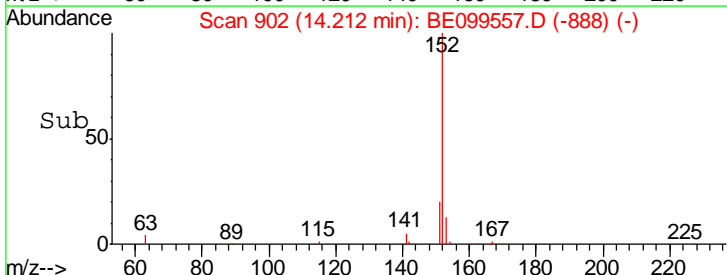
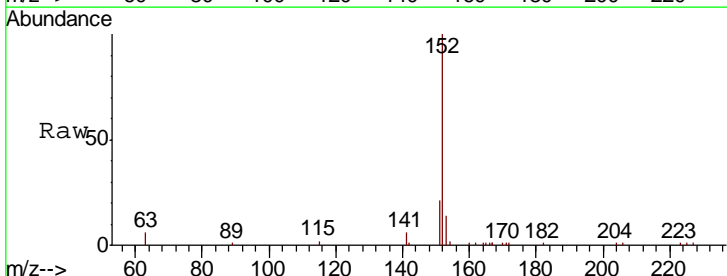
Manual Integrations
APPROVED

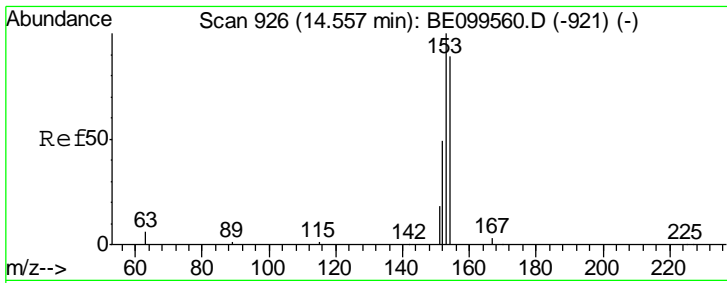
mohammad
 5/8/2019 3:59:32 PM



#16
 Acenaphthylene
 Concen: 0.674 ng
 RT: 14.21 min Scan# 902
 Delta R.T. 0.00 min
 Lab File: BE099557.D
 Acq: 7 May 2019 8:59

Tgt Ion	Resp	Lower	Upper
152	100		
151	20.1	15.8	23.8
153	13.6	10.5	15.7





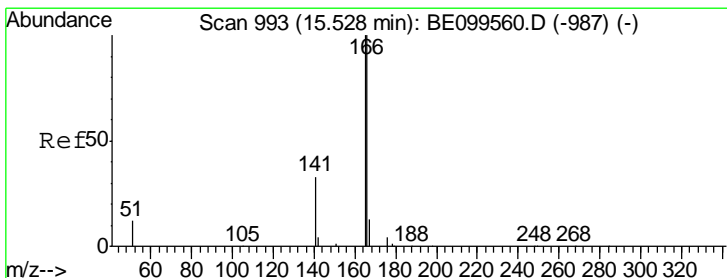
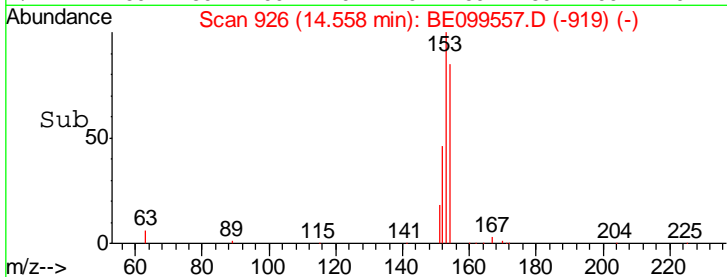
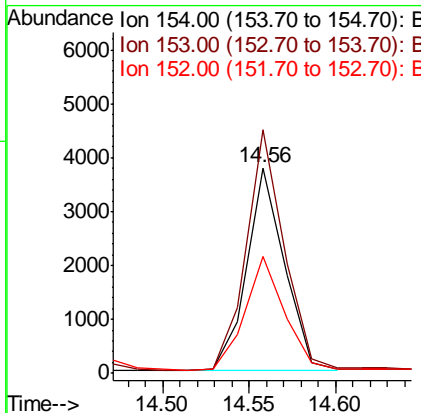
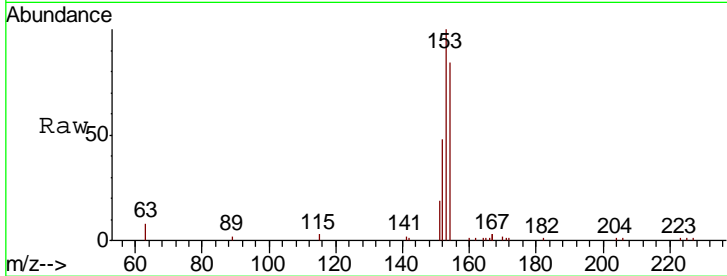
#17
 Acenaphthene
 Concen: 0.466 ng
 RT: 14.56 min Scan# 926
 Delta R.T. 0.00 min
 Lab File: BE099557.D
 Acq: 7 May 2019 8:59

Instrument :
 BNA_E
 ClientSampled :
 SSTDCCC0.4

Tgt Ion	Ratio	Lower	Upper
154	100		
153	118.9	89.7	134.5
152	58.8	43.9	65.9

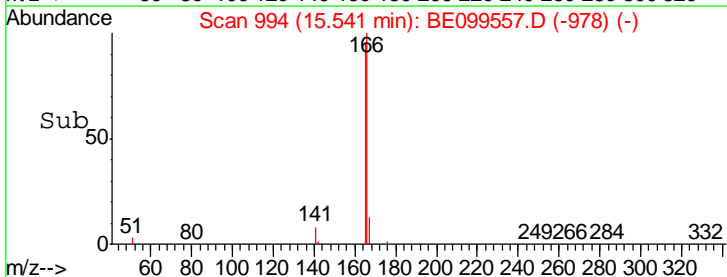
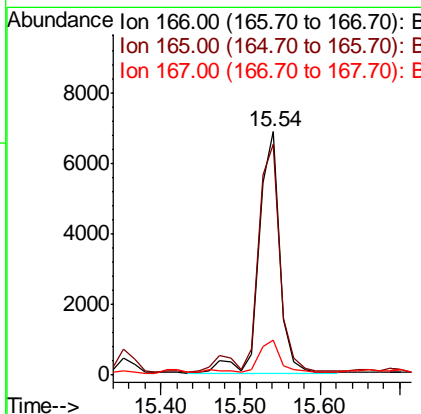
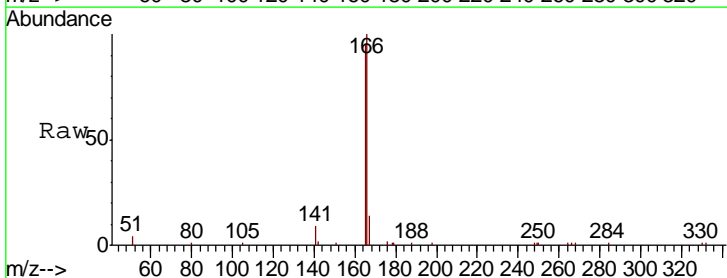
Manual Integrations
 APPROVED

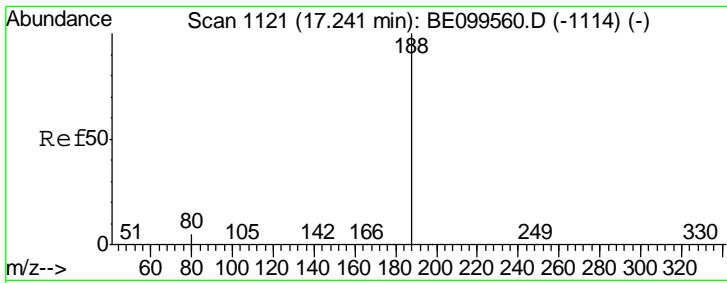
mohammad
 5/8/2019 3:59:32 PM



#18
 Fluorene
 Concen: 0.711 ng
 RT: 15.54 min Scan# 994
 Delta R.T. 0.01 min
 Lab File: BE099557.D
 Acq: 7 May 2019 8:59

Tgt Ion	Ratio	Lower	Upper
166	100		
165	101.6	79.0	118.6
167	13.6	11.5	17.3





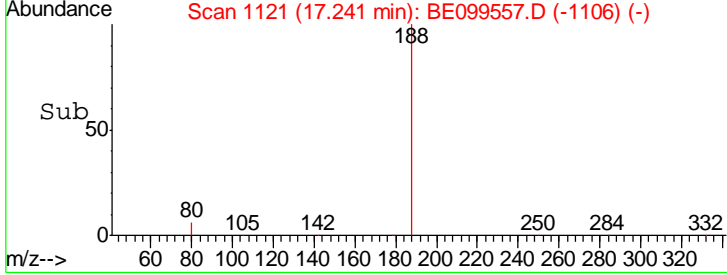
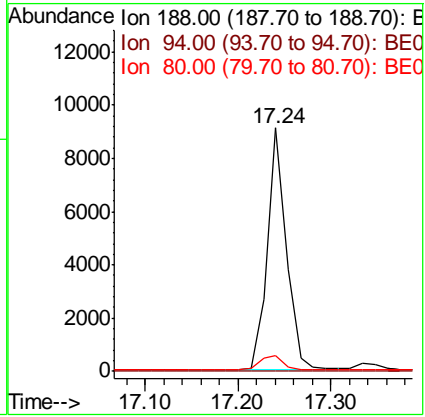
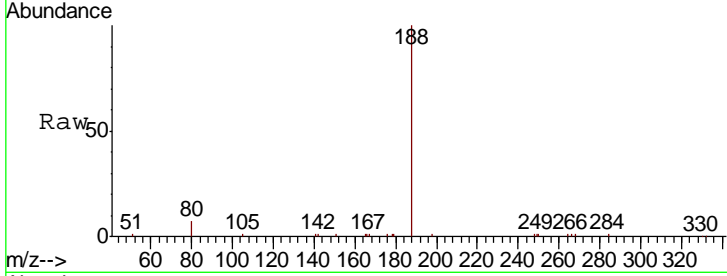
#19
 Phenanthrene-d10
 Concen: 0.400 ng
 RT: 17.24 min Scan# 1121
 Delta R.T. -0.00 min
 Lab File: BE099557.D
 Acq: 7 May 2019 8:59

Instrument :
 BNA_E
 ClientSampled :
 SSTDCCC0.4

Tgt Ion	Ratio	Lower	Upper
188	100		
94	0.0	0.0	0.0
80	6.5	4.6	7.0

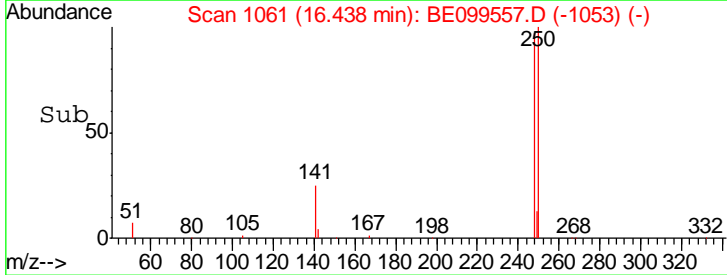
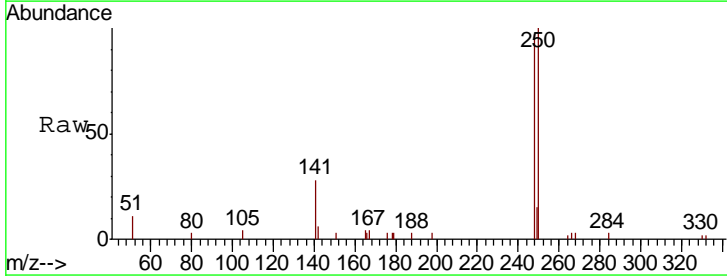
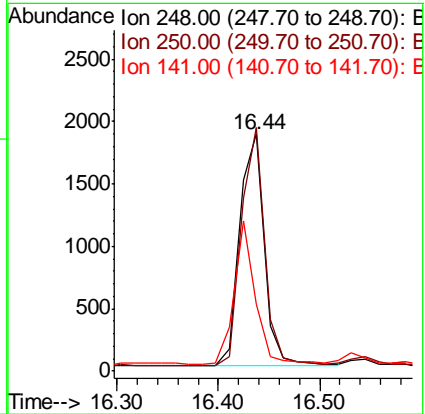
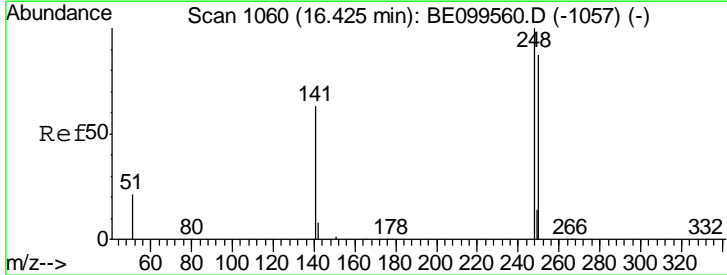
Manual Integrations
 APPROVED

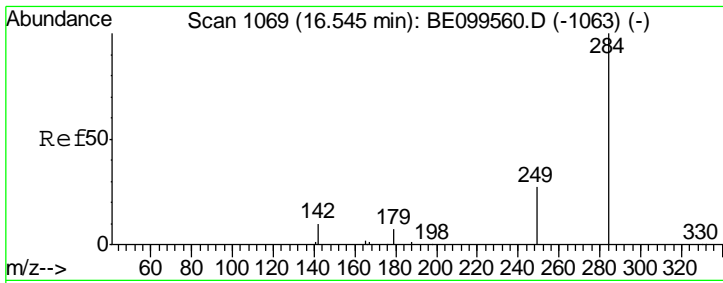
mohammad
 5/8/2019 3:59:32 PM



#20
 4-Bromophenyl-phenylether
 Concen: 0.420 ng
 RT: 16.44 min Scan# 1061
 Delta R.T. 0.01 min
 Lab File: BE099557.D
 Acq: 7 May 2019 8:59

Tgt Ion	Ratio	Lower	Upper
248	100		
250	102.8	70.0	105.0
141	28.4	51.8	77.8#





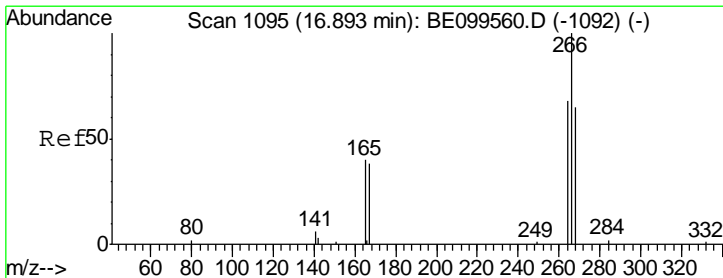
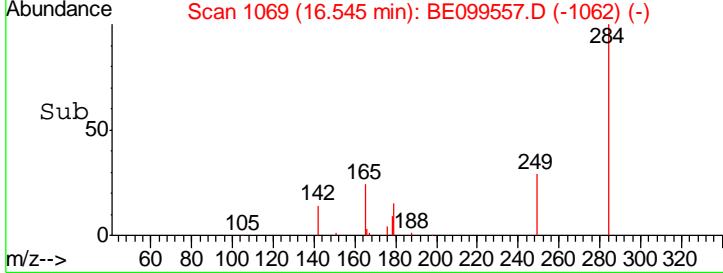
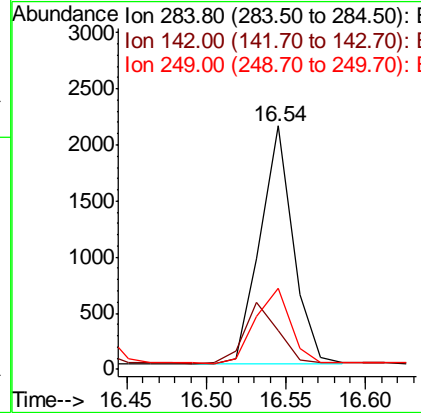
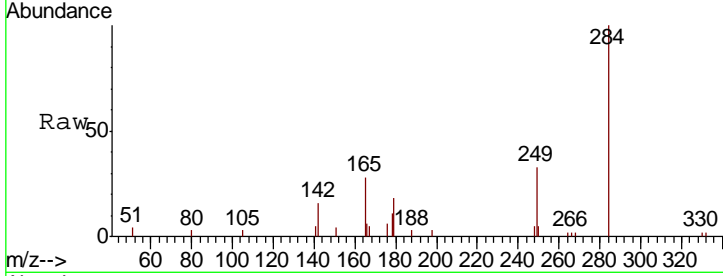
#21
 Hexachlorobenzene
 Concen: 0.411 ng
 RT: 16.54 min Scan# 1069
 Delta R.T. -0.00 min
 Lab File: BE099557.D
 Acq: 7 May 2019 8:59

Instrument : BNA_E
 ClientSampled : SSTDCCC0.4

Tgt Ion	Resp	Lower	Upper
284	3044		
284	100		
142	25.8	19.5	29.3
249	33.1	26.2	39.2

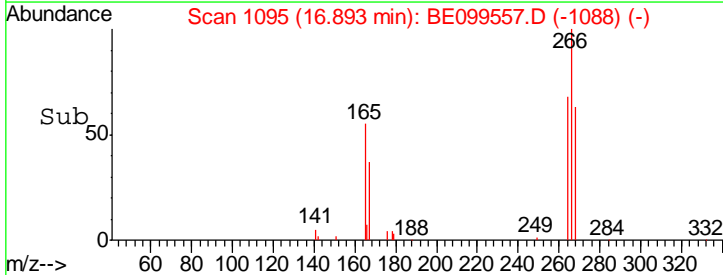
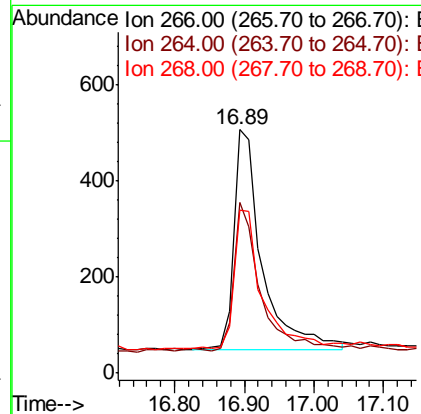
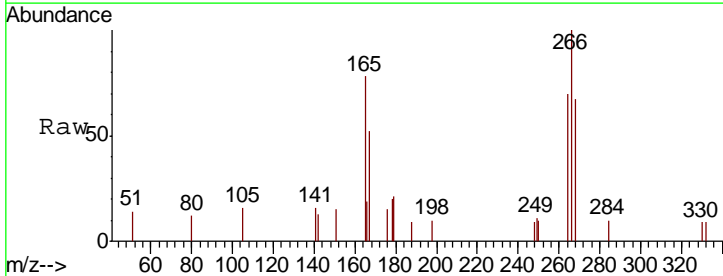
Manual Integrations
 APPROVED

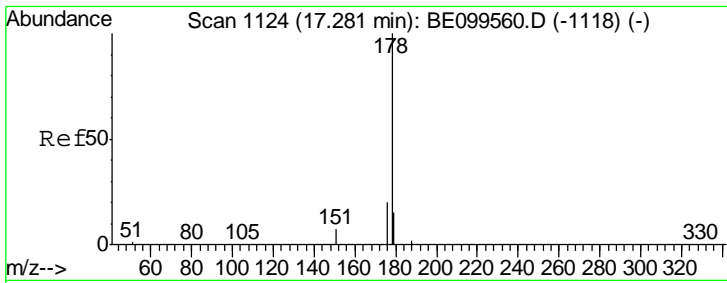
mohammad
 5/8/2019 3:59:32 PM



#22
 Pentachlorophenol
 Concen: 0.418 ng
 RT: 16.89 min Scan# 1095
 Delta R.T. -0.00 min
 Lab File: BE099557.D
 Acq: 7 May 2019 8:59

Tgt Ion	Resp	Lower	Upper
266	1275		
266	100		
264	70.2	56.6	84.8
268	66.9	55.8	83.8





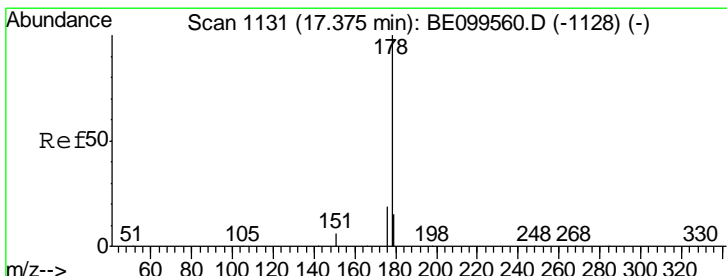
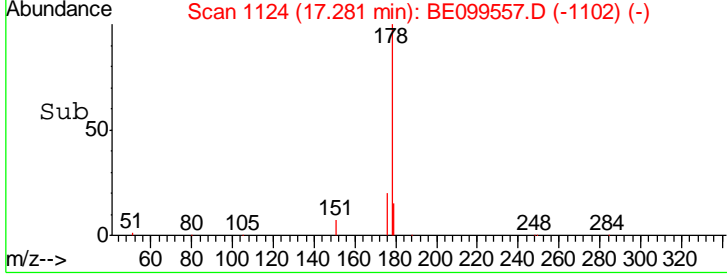
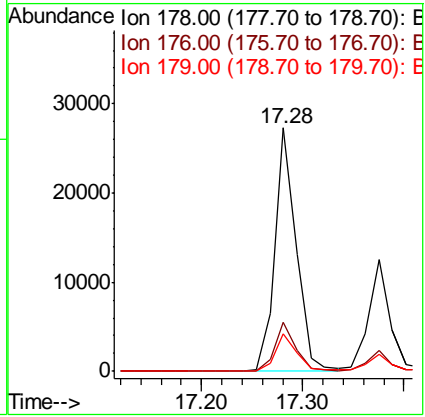
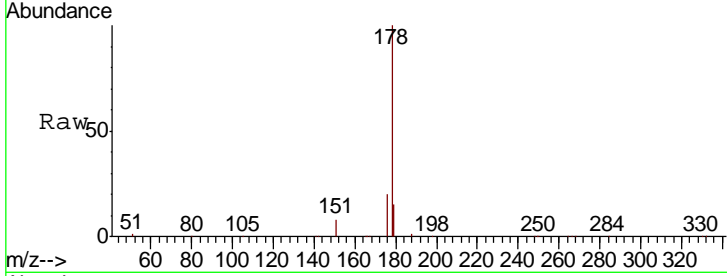
#23
 Phenanthrene
 Concen: 1.219 ng
 RT: 17.28 min Scan# 1124
 Delta R.T. -0.00 min
 Lab File: BE099557.D
 Acq: 7 May 2019 8:59

Instrument :
 BNA_E
 ClientSampled :
 SSTDCCC0.4

Tgt Ion	Resp	Lower	Upper
178	39390		
176	19.4	15.8	23.6
179	15.1	12.5	18.7

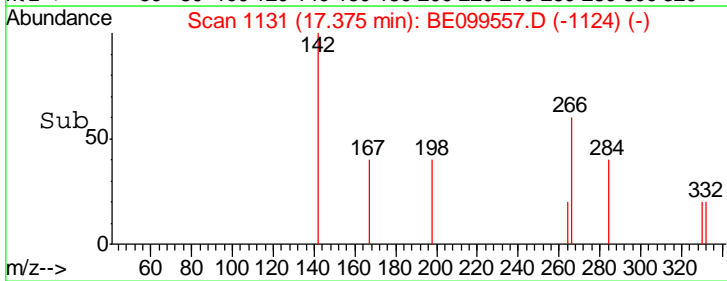
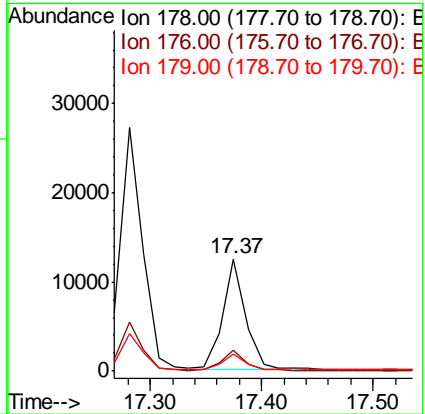
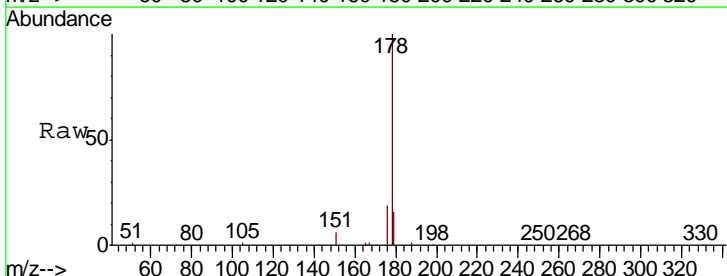
Manual Integrations
 APPROVED

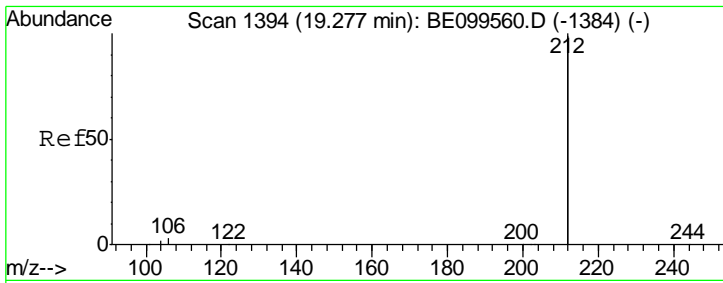
mohammad
 5/8/2019 3:59:32 PM



#24
 Anthracene
 Concen: 0.575 ng
 RT: 17.37 min Scan# 1131
 Delta R.T. -0.00 min
 Lab File: BE099557.D
 Acq: 7 May 2019 8:59

Tgt Ion	Resp	Lower	Upper
178	17870		
176	18.4	15.3	22.9
179	14.3	12.2	18.4





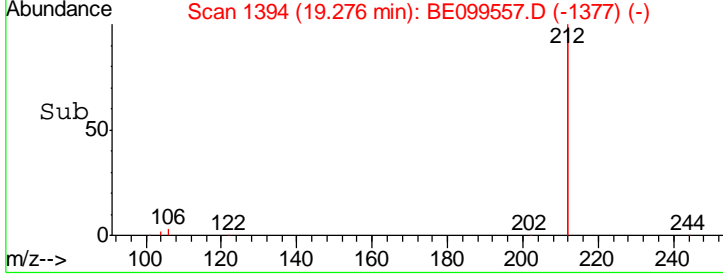
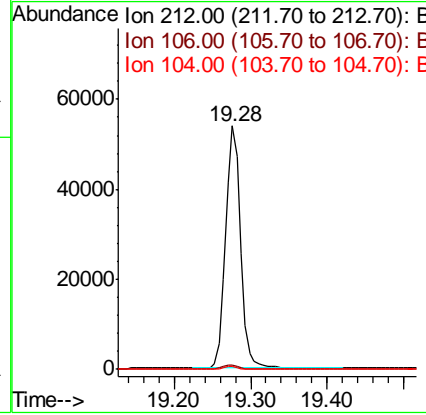
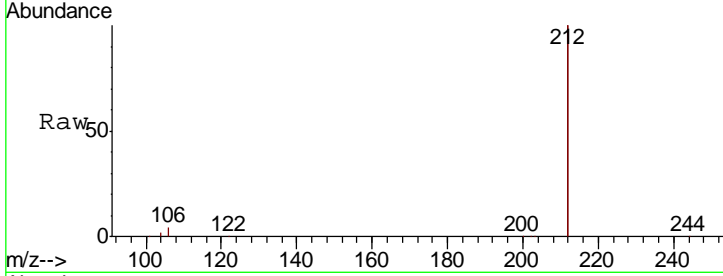
#25
 Fluoranthene-d10
 Concen: 0.417 ng
 RT: 19.28 min Scan# 1394
 Delta R.T. -0.00 min
 Lab File: BE099557.D
 Acq: 7 May 2019 8:59

Instrument :
 BNA_E
ClientSampled :
 SSTDCCC0.4

Tgt Ion	Resp	Lower	Upper
212	100		
106	1.7	1.4	2.0
104	1.0	0.8	1.2

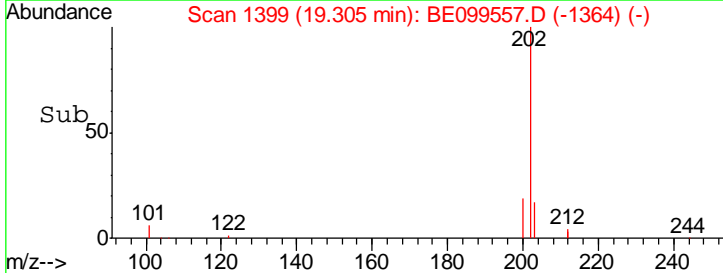
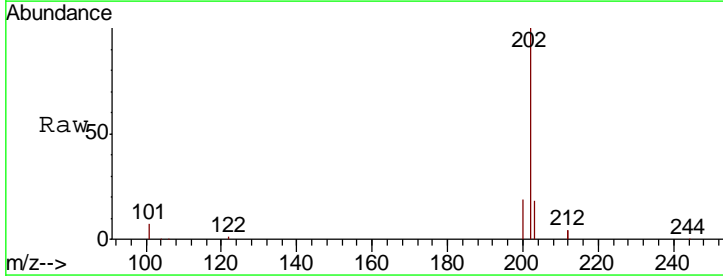
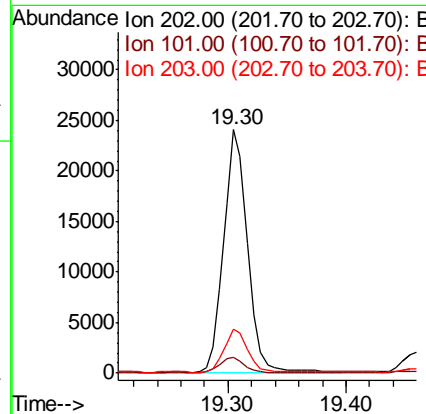
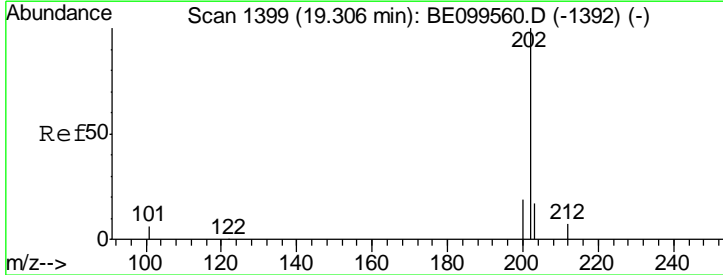
Manual Integrations
APPROVED

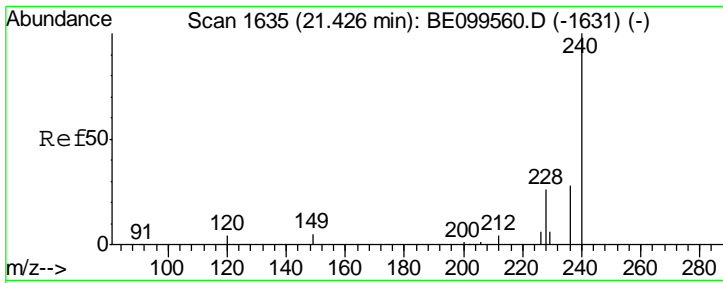
mohammad
 5/8/2019 3:59:32 PM



#26
 Fluoranthene
 Concen: 0.667 ng
 RT: 19.30 min Scan# 1399
 Delta R.T. -0.00 min
 Lab File: BE099557.D
 Acq: 7 May 2019 8:59

Tgt Ion	Resp	Lower	Upper
202	100		
101	6.3	5.3	7.9
203	17.4	13.4	20.2





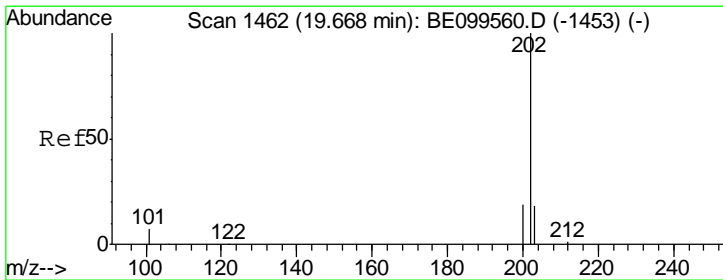
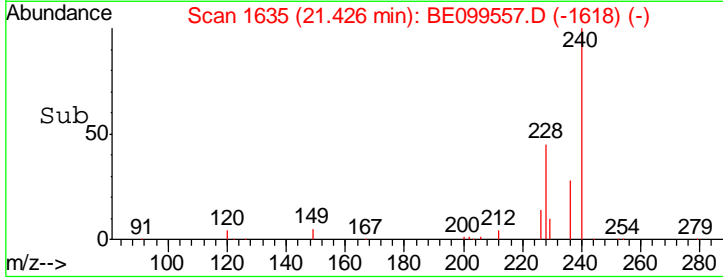
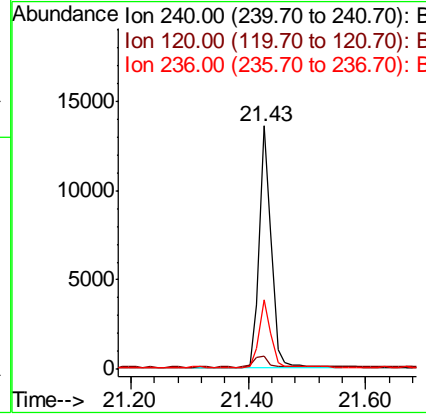
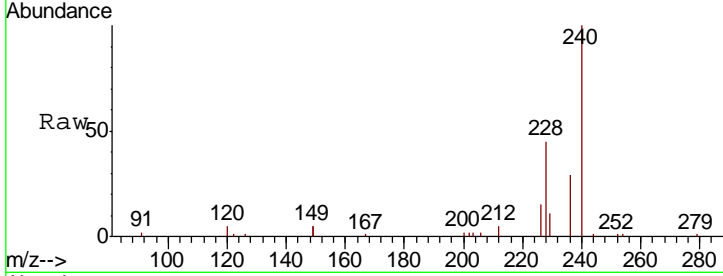
#27
 Chrysene-d12
 Concen: 0.400 ng
 RT: 21.43 min Scan# 1635
 Delta R.T. -0.00 min
 Lab File: BE099557.D
 Acq: 7 May 2019 8:59

Instrument :
 BNA_E
 ClientSampled :
 SSTDCCC0.4

Tgt Ion	Resp	Lower	Upper
240	19467		
240	100		
120	5.3	3.8	5.6
236	28.6	22.5	33.7

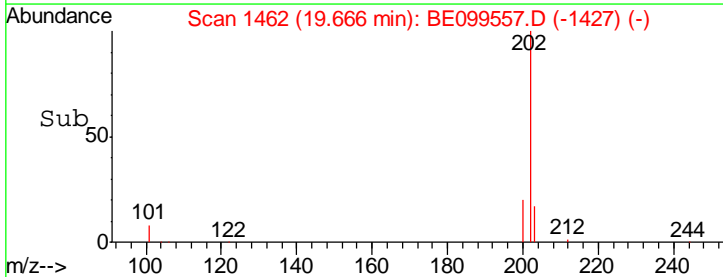
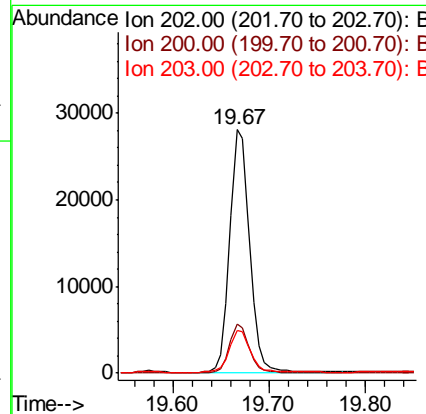
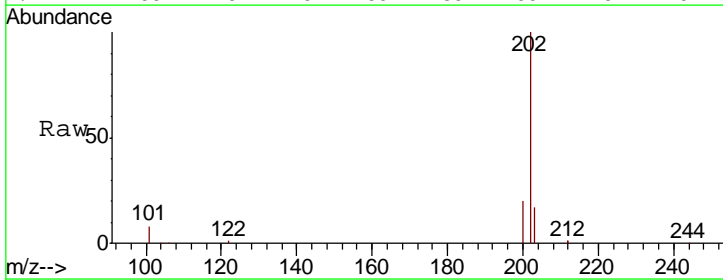
Manual Integrations
 APPROVED

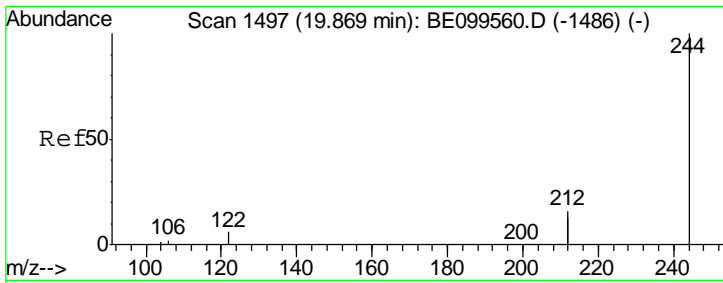
mohammad
 5/8/2019 3:59:32 PM



#28
 Pyrene
 Concen: 0.774 ng
 RT: 19.67 min Scan# 1462
 Delta R.T. -0.00 min
 Lab File: BE099557.D
 Acq: 7 May 2019 8:59

Tgt Ion	Resp	Lower	Upper
202	40359		
202	100		
200	19.8	15.8	23.6
203	18.2	14.1	21.1



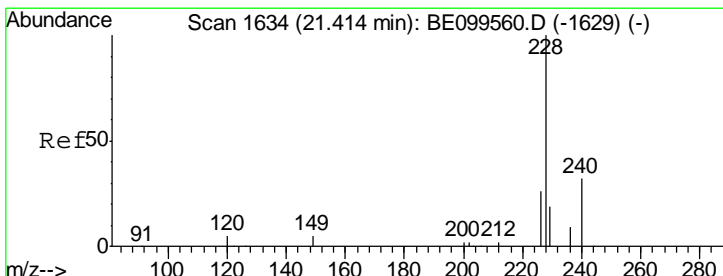
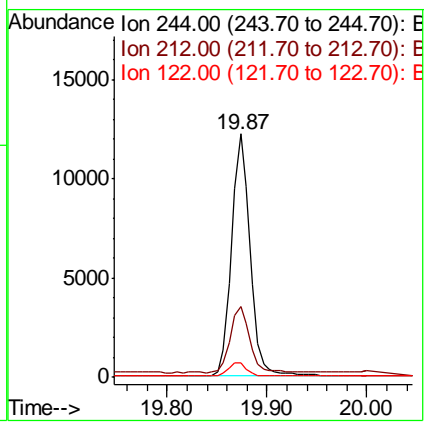
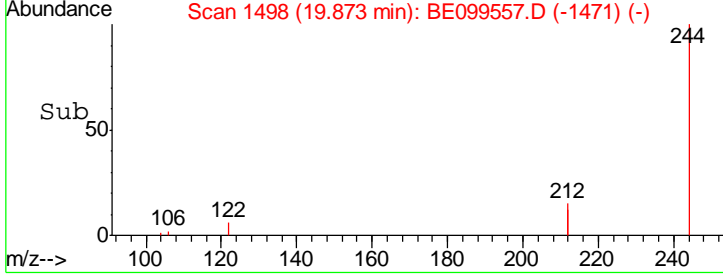
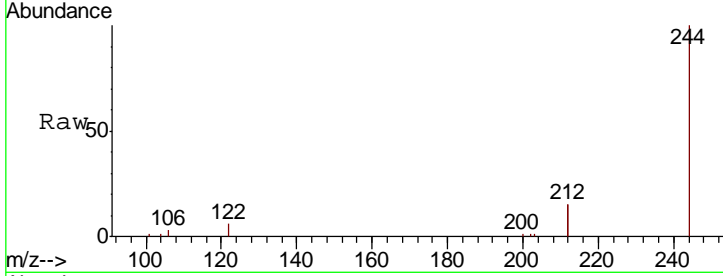


#29
 Terphenyl-d14
 Concen: 0.438 ng
 RT: 19.87 min Scan# 1498
 Delta R.T. 0.00 min
 Lab File: BE099557.D
 Acq: 7 May 2019 8:59

Instrument :
 BNA_E
ClientSampled :
 SSTDCCC0.4

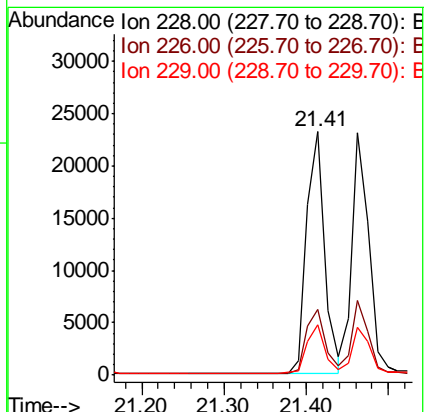
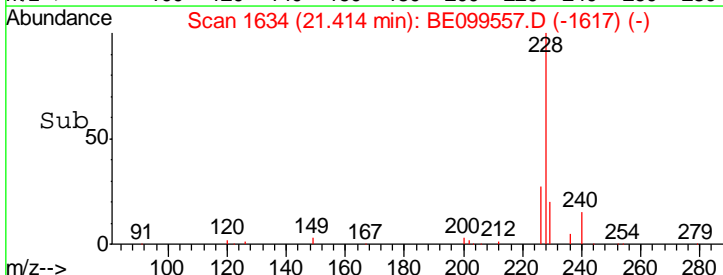
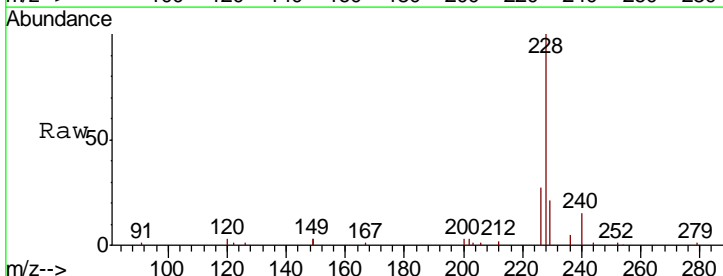
Tgt Ion	Resp	Lower	Upper
244	15810		
244	100		
212	29.2	24.6	37.0
122	6.1	5.0	7.6

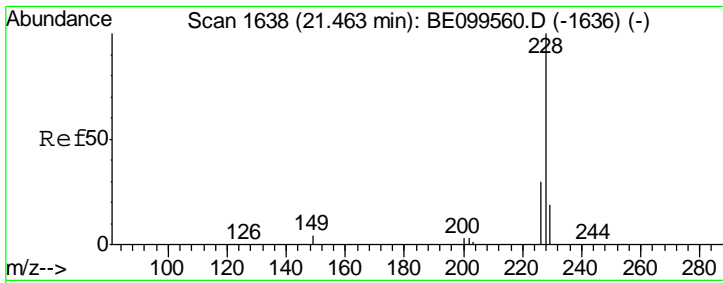
Manual Integrations
APPROVED
 mohammad
 5/8/2019 3:59:32 PM



#30
 Benzo(a)anthracene
 Concen: 0.585 ng
 RT: 21.41 min Scan# 1634
 Delta R.T. -0.00 min
 Lab File: BE099557.D
 Acq: 7 May 2019 8:59

Tgt Ion	Resp	Lower	Upper
228	35291		
228	100		
226	27.2	20.9	31.3
229	20.9	16.1	24.1





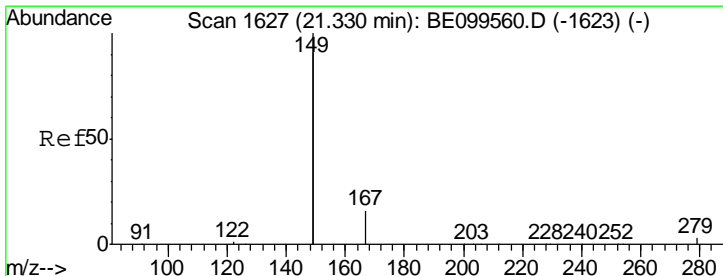
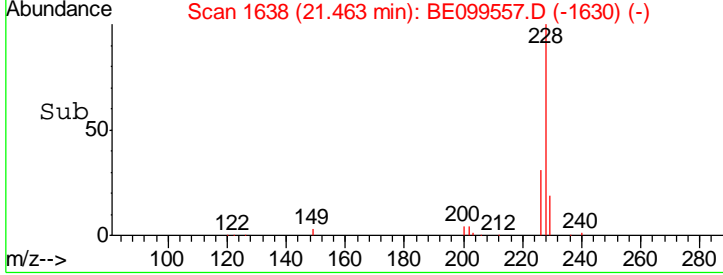
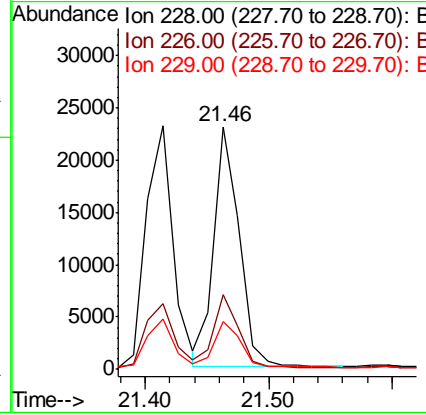
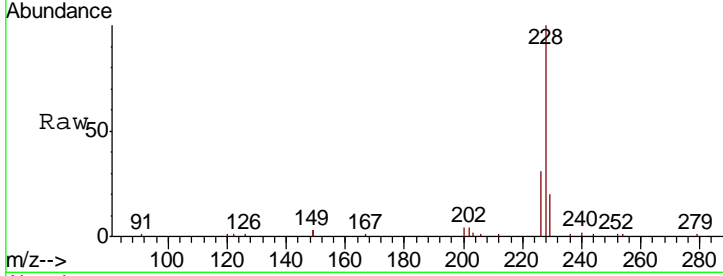
#31
 Chrysene
 Concen: 0.557 ng
 RT: 21.46 min Scan# 1638
 Delta R.T. -0.00 min
 Lab File: BE099557.D
 Acq: 7 May 2019 8:59

Instrument :
 BNA_E
 ClientSampled :
 SSTDCCC0.4

Tgt Ion	Resp	Lower	Upper
228	100		
226	31.0	24.2	36.4
229	19.9	15.8	23.6

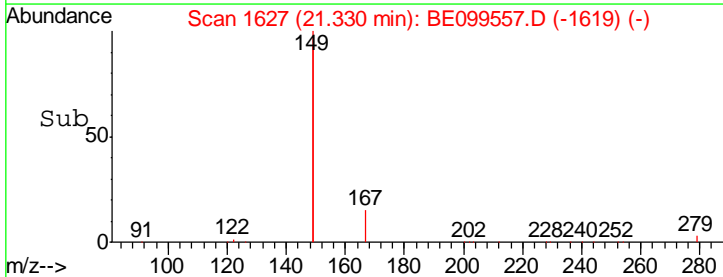
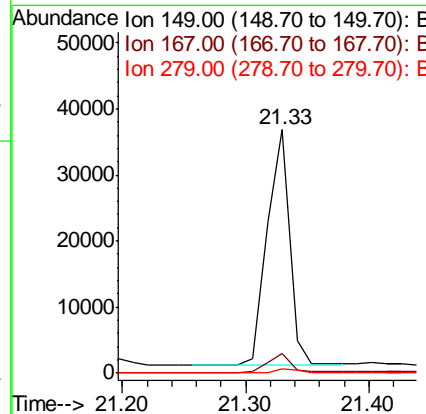
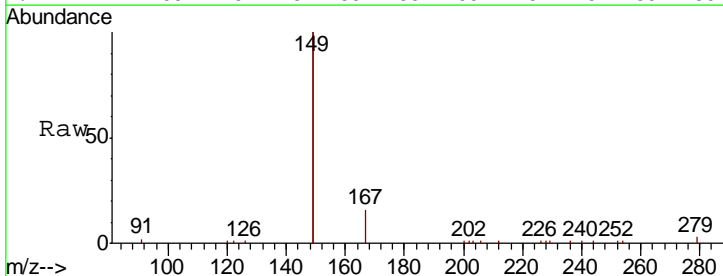
Manual Integrations
 APPROVED

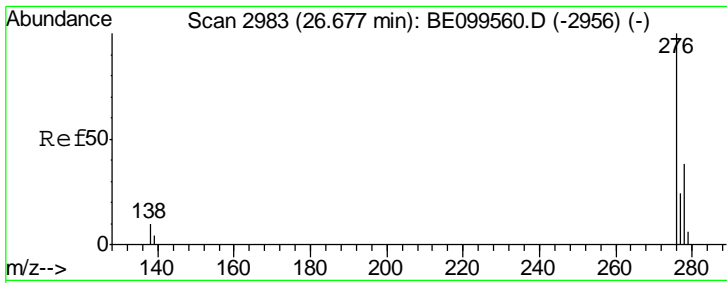
mohammad
 5/8/2019 3:59:32 PM



#32
 Bis(2-ethylhexyl)phthalate
 Concen: 0.476 ng
 RT: 21.33 min Scan# 1627
 Delta R.T. -0.00 min
 Lab File: BE099557.D
 Acq: 7 May 2019 8:59

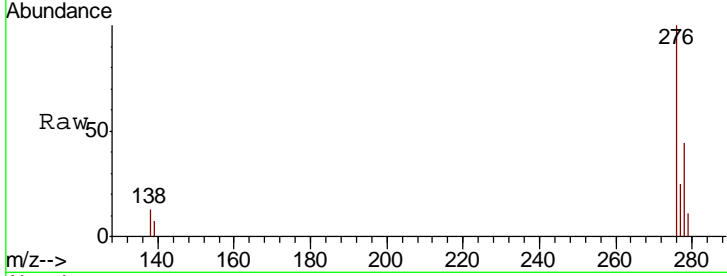
Tgt Ion	Resp	Lower	Upper
149	100		
167	7.8	6.1	9.1
279	1.6	1.3	1.9





#33
 Indeno(1,2,3-cd)pyrene
 Concen: 0.494 ng
 RT: 26.69 min Scan# 2986
 Delta R.T. 0.01 min
 Lab File: BE099557.D
 Acq: 7 May 2019 8:59

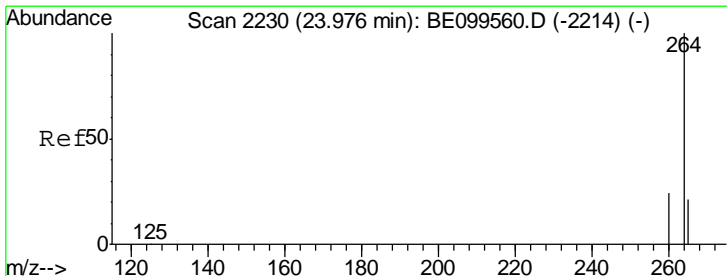
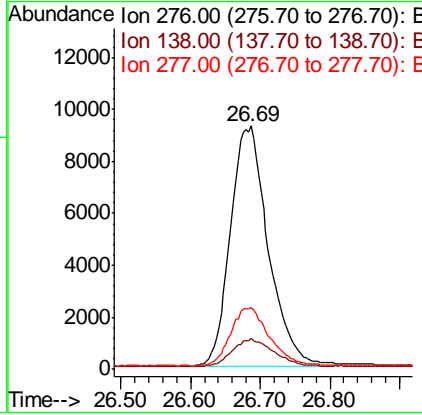
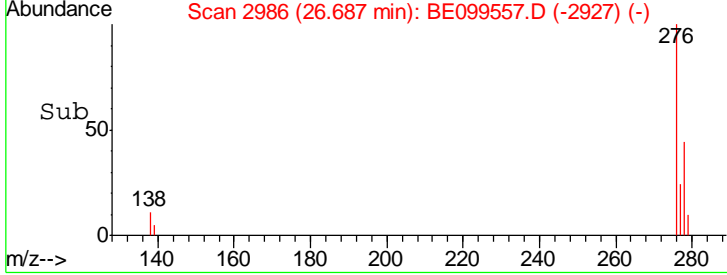
Instrument :
 BNA_E
ClientSampled :
 SSTDCCC0.4



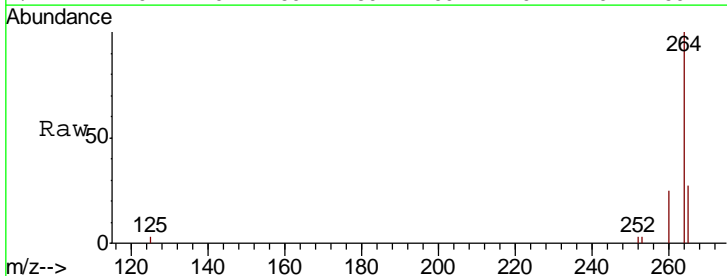
Tgt Ion: 276 Resp: 34907

Ion	Ratio	Lower	Upper
276	100		
138	12.1	9.5	14.3
277	24.8	19.7	29.5

Manual Integrations
APPROVED
 mohammad
 5/8/2019 3:59:32 PM

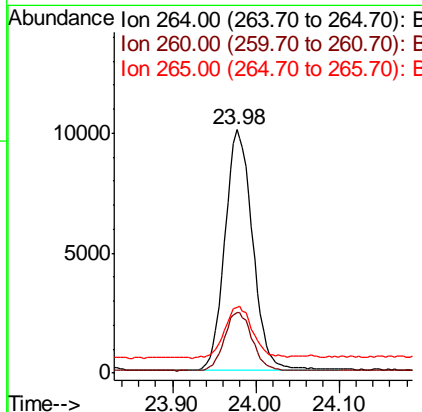
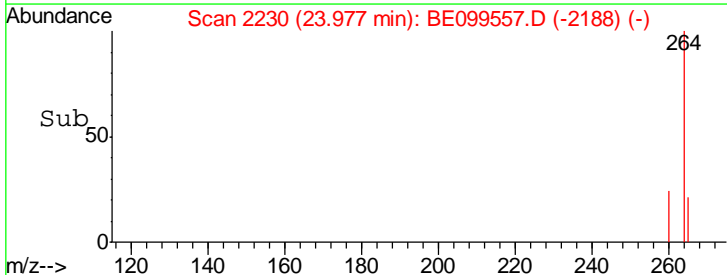


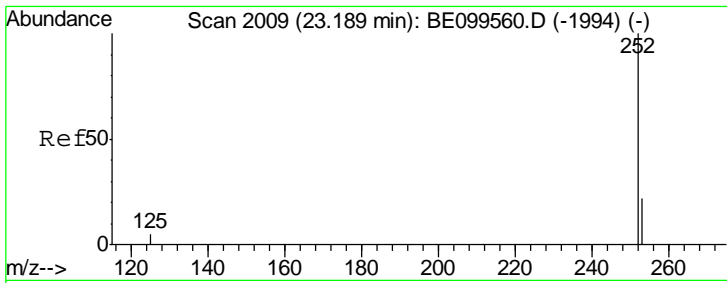
#34
 Perylene-d12
 Concen: 0.400 ng
 RT: 23.98 min Scan# 2230
 Delta R.T. 0.00 min
 Lab File: BE099557.D
 Acq: 7 May 2019 8:59



Tgt Ion: 264 Resp: 23081

Ion	Ratio	Lower	Upper
264	100		
260	24.8	19.9	29.9
265	27.0	22.2	33.2





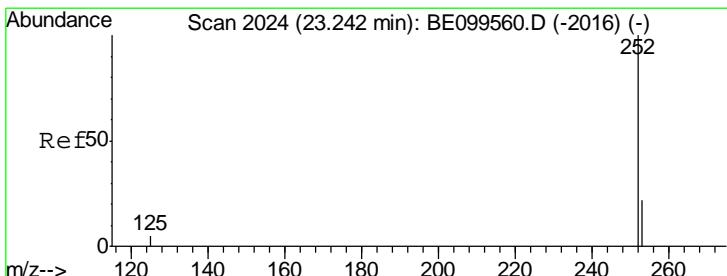
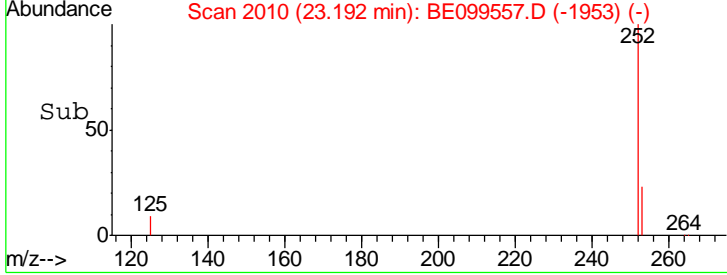
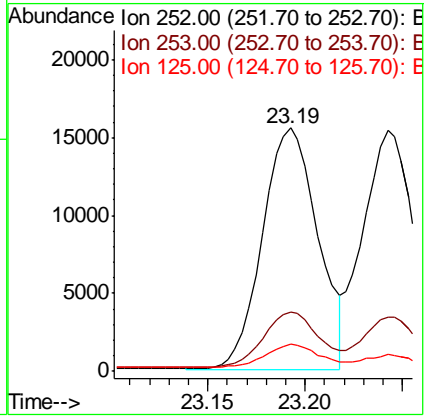
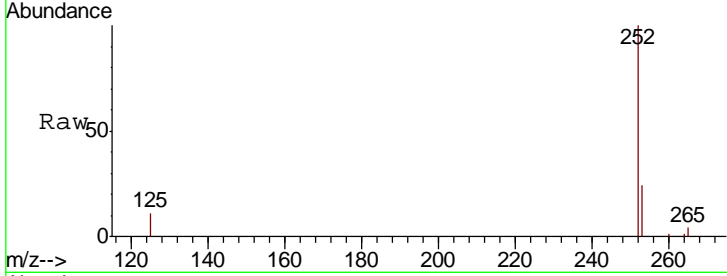
#35
 Benzo(b)fluoranthene
 Concen: 0.483 ng m
 RT: 23.19 min Scan# 2010
 Delta R.T. 0.00 min
 Lab File: BE099557.D
 Acq: 7 May 2019 8:59

Instrument :
 BNA_E
Client Sampled :
 SSTDCCC0.4

Tgt Ion	Resp	Lower	Upper
252	30776		
253	24.5	19.0	28.4
125	11.0	5.8	8.6#

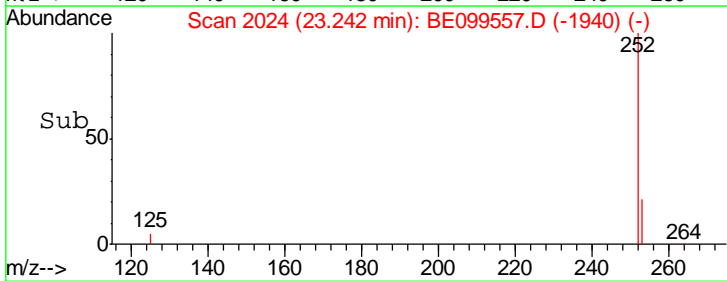
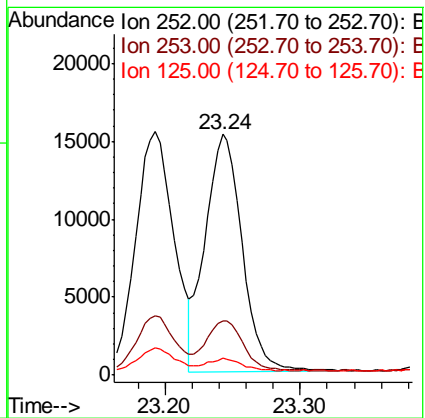
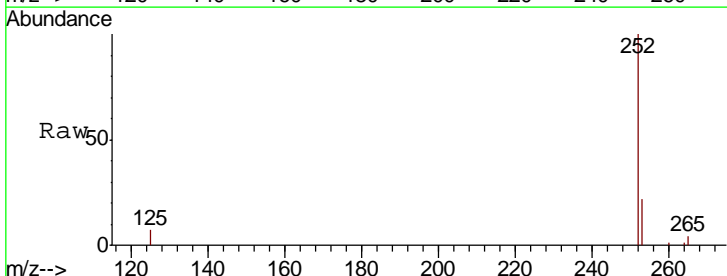
Manual Integrations
APPROVED

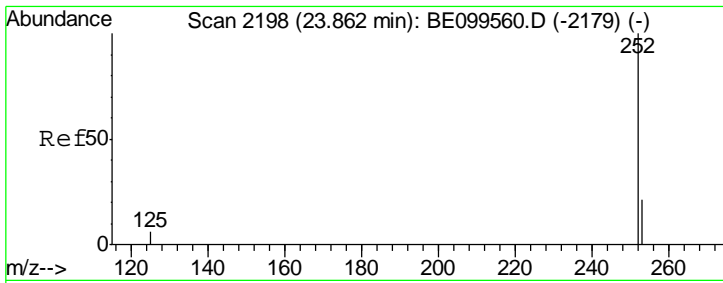
mohammad
 5/8/2019 3:59:32 PM



#36
 Benzo(k)fluoranthene
 Concen: 0.458 ng
 RT: 23.24 min Scan# 2024
 Delta R.T. 0.00 min
 Lab File: BE099557.D
 Acq: 7 May 2019 8:59

Tgt Ion	Resp	Lower	Upper
252	28725		
253	22.3	19.1	28.7
125	6.9	5.8	8.6



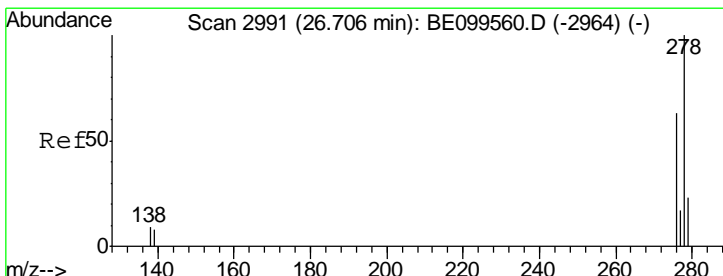
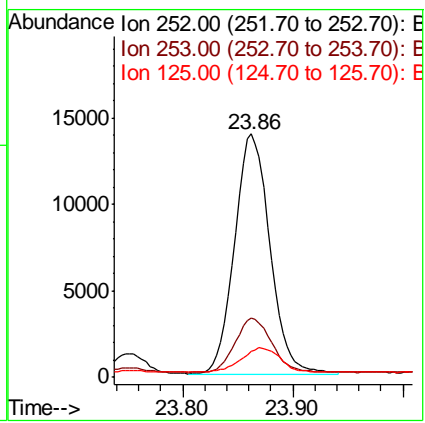
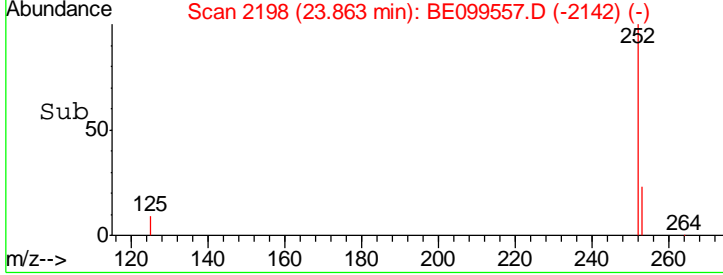
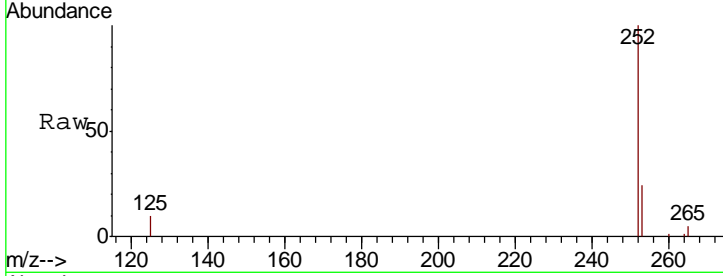


#37
 Benzo(a)pyrene
 Concen: 0.502 ng
 RT: 23.86 min Scan# 2198
 Delta R.T. 0.00 min
 Lab File: BE099557.D
 Acq: 7 May 2019 8:59

Instrument :
 BNA_E
 ClientSampled :
 SSTDCCC0.4

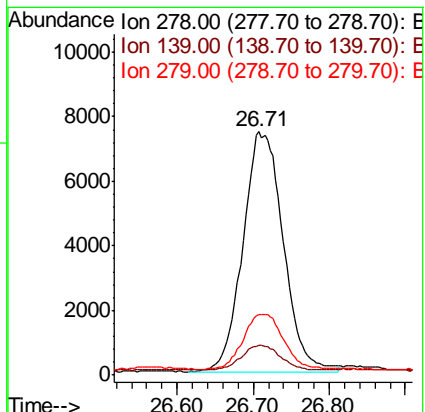
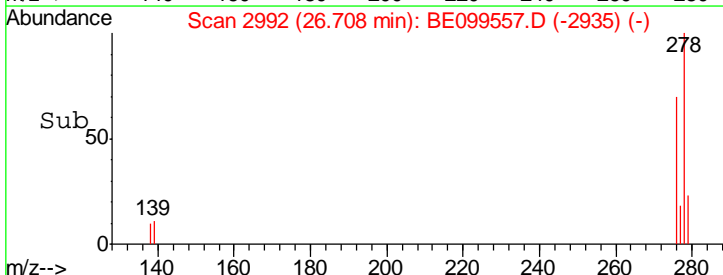
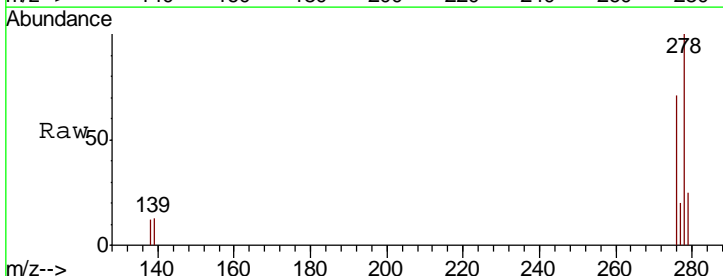
Tgt Ion	Resp	Lower	Upper
252	30837		
253	24.5	18.9	28.3
125	10.5	6.6	9.8#

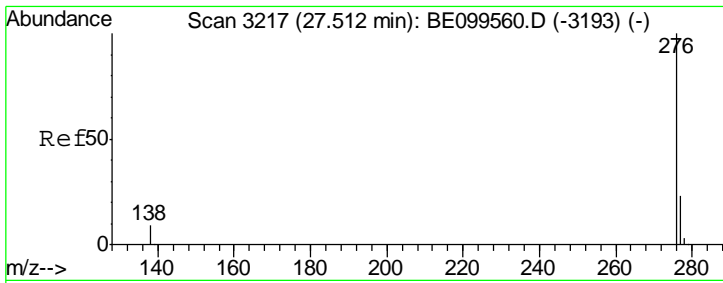
Manual Integrations
 APPROVED
 mohammad
 5/8/2019 3:59:32 PM



#38
 Dibenzo(a,h)anthracene
 Concen: 0.431 ng
 RT: 26.71 min Scan# 2992
 Delta R.T. 0.00 min
 Lab File: BE099557.D
 Acq: 7 May 2019 8:59

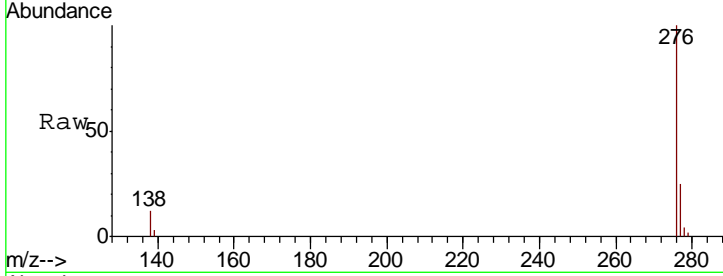
Tgt Ion	Resp	Lower	Upper
278	27398		
139	12.5	7.7	11.5#
279	25.0	21.0	31.4





#39
 Benzo(a,h,i)perylene
 Concen: 0.457 ng
 RT: 27.52 min Scan# 3220
 Delta R.T. 0.01 min
 Lab File: BE099557.D
 Acq: 7 May 2019 8:59

Instrument :
 BNA_E
ClientSampled :
 SSTDCCC0.4



Tot Ion: 276 Resp: 29094

Ion	Ratio	Lower	Upper
276	100		
277	24.6	19.7	29.5
138	12.0	8.6	12.8

Manual Integrations
APPROVED
 mohammad
 5/8/2019 3:59:32 PM

