

Data Path : Z:\SVOASRV\HPCHEM1\BNA E\DATA\BE051019\
 Data File : BE099597.D
 Acq On : 10 May 2019 11:01
 Operator : JU/SJ
 Sample : SSTDCCC0.4
 Misc :
 ALS Vial : 2 Sample Multiplier: 1

Instrument :
 BNA_E
 ClientSampled :
 SSTDCCC0.4

Manual Integrations
 APPROVED

Sohil
 5/13/2019 8:33:18 PM

Quant Time: May 11 01:27:02 2019

Quant Method : Z:\SVOASRV\HPCHEM1\BNA E\METHODS\8270-SIM-BE050919.M

Quant Title : ASP BNA STANDARDS FOR 5 POINT CALIBRATION

QLast Update : Thu May 09 13:32:58 2019

Response via : Initial Calibration

Internal Standards	R.T.	QIon	Response	Conc	Units	Dev(Min)
1) 1,4-Dichlorobenzene-d4	7.82	152	1769	0.40	ng	0.00
7) Naphthalene-d8	10.63	136	6507	0.40	ng	0.00
13) Acenaphthene-d10	14.50	164	4586	0.40	ng	0.00
19) Phenanthrene-d10	17.24	188	12883	0.40	ng	0.00
27) Chrysene-d12	21.43	240	17533	0.40	ng	0.00
34) Perylene-d12	23.97	264	20673	0.40	ng	0.00

System Monitoring Compounds

4) 2-Fluorophenol	5.39	112	2000	0.41	ng	0.00
5) Phenol-d6	6.99	99	2685	0.42	ng	0.01
8) Nitrobenzene-d5	8.99	82	2514	0.41	ng	0.01
11) 2-Methylnaphthalene-d10	12.22	152	4492	0.41	ng	0.00
14) 2,4,6-Tribromophenol	15.98	330	1111	0.41	ng	0.00
15) 2-Fluorobiphenyl	13.12	172	7036	0.40	ng	0.00
25) Fluoranthene-d10	19.28	212	71243	0.42	ng	0.00
29) Terphenyl-d14	19.87	244	14885	0.48	ng	0.00

Target Compounds

Target Compounds	R.T.	QIon	Response	Conc	Units	Qvalue
2) 1,4-Dioxane	3.31	88	1028	0.412	ng	96
3) n-Nitrosodimethylamine	3.64	42	563	0.365	ng	# 1
6) bis(2-Chloroethyl)ether	7.24	93	2161	0.409	ng	97
9) Naphthalene	10.68	128	28835	0.416	ng	100
10) Hexachlorobutadiene	10.95	225	2104	0.420	ng	99
12) 2-Methylnaphthalene	12.31	142	4822	0.426	ng	95
16) Acenaphthylene	14.21	152	8745	0.394	ng	100
17) Acenaphthene	14.56	154	4958	0.400	ng	99
18) Fluorene	15.54	166	7275	0.411	ng	98
20) 4-Bromophenyl-phenylether	16.44	248	2987	0.406	ng	# 80
21) Hexachlorobenzene	16.54	284	3038	0.412	ng	99
22) Pentachlorophenol	16.91	266	924m	0.473	ng	
23) Phenanthrene	17.28	178	13669	0.427	ng	99
24) Anthracene	17.37	178	12200	0.406	ng	99
26) Fluoranthene	19.30	202	21048	0.437	ng	100
28) Pyrene	19.67	202	22093	0.478	ng	99
30) Benzo(a)anthracene	21.40	228	24696	0.461	ng	98
31) Chrysene	21.46	228	24747	0.462	ng	99
32) Bis(2-ethylhexyl)phthalate	21.32	149	36170	0.470	ng	100
33) Indeno(1,2,3-cd)pyrene	26.67	276	29229	0.438	ng	98
35) Benzo(b)fluoranthene	23.19	252	24405	0.427	ng	# 96
36) Benzo(k)fluoranthene	23.24	252	24457	0.431	ng	99
37) Benzo(a)pyrene	23.86	252	23605	0.427	ng	# 96
38) Dibenzo(a,h)anthracene	26.70	278	24020	0.415	ng	# 96
39) Benzo(g,h,i)perylene	27.51	276	24114	0.412	ng	100

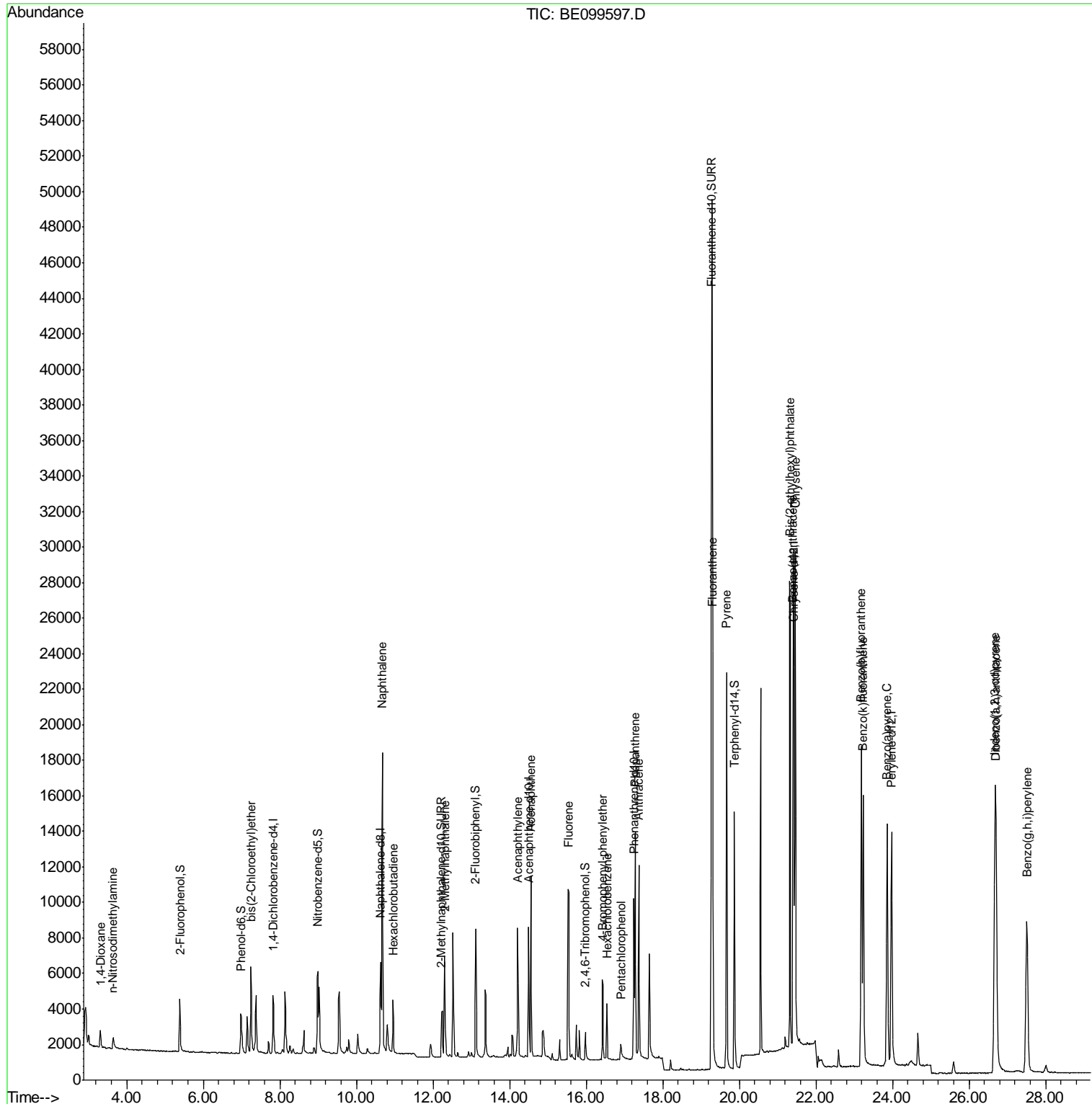
(#) = qualifier out of range (m) = manual integration (+) = signals summed

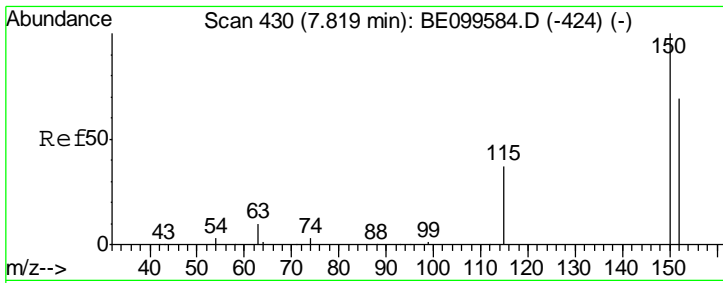
Data Path : Z:\SVOASRV\HPCHEM1\BNA E\DATA\BE051019\
 Data File : BE099597.D
 Acq On : 10 May 2019 11:01
 Operator : JU/SJ
 Sample : SSTDCCC0.4
 Misc :
 ALS Vial : 2 Sample Multiplier: 1

Instrument :
 BNA_E
 ClientSampled :
 SSTDCCC0.4

Manual Integrations
 APPROVED
 Sohil
 5/13/2019 8:33:18 PM

Quant Time: May 11 01:27:02 2019
 Quant Method : Z:\SVOASRV\HPCHEM1\BNA E\METHODS\8270-SIM-BE050919.M
 Quant Title : ASP BNA STANDARDS FOR 5 POINT CALIBRATION
 QLast Update : Thu May 09 13:32:58 2019
 Response via : Initial Calibration





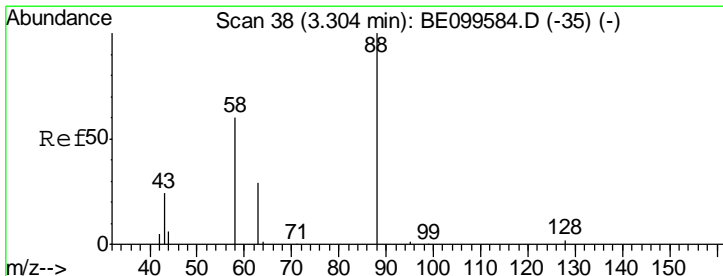
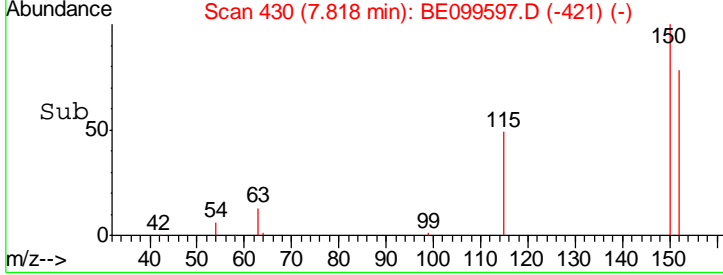
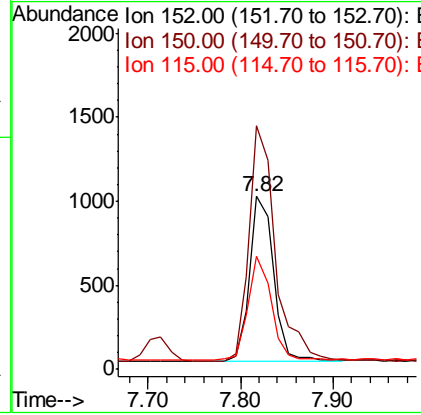
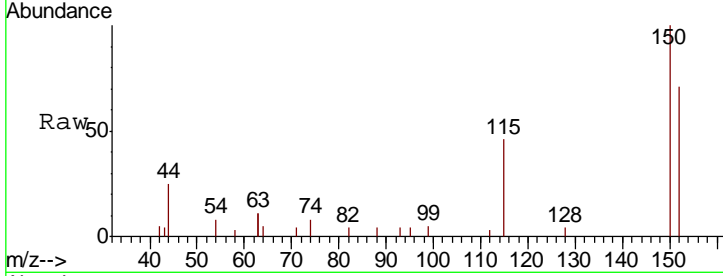
#1
 1,4-Dichlorobenzene-d4
 Concen: 0.400 ng
 RT: 7.82 min Scan# 430
 Delta R.T. -0.00 min
 Lab File: BE099597.D
 Acq: 10 May 2019 11:01

Instrument :
 BNA_E
 ClientSampled :
 SSTDCCC0.4

Tgt Ion	Resp	Lower	Upper
152	1769		
152	100		
150	140.8	114.2	171.4
115	65.1	45.4	68.0

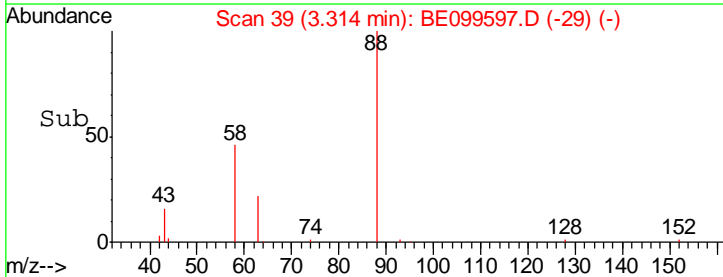
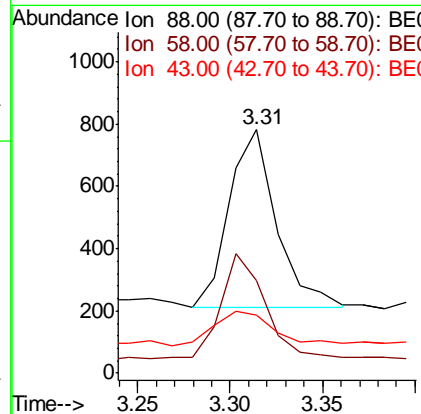
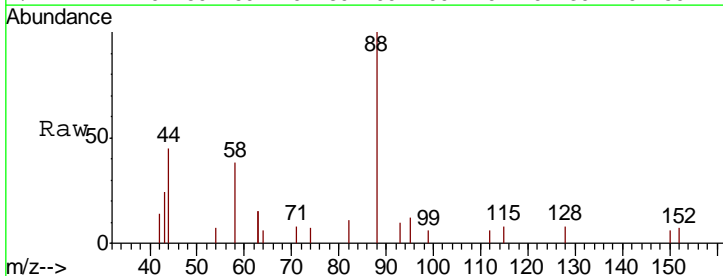
Manual Integrations
 APPROVED

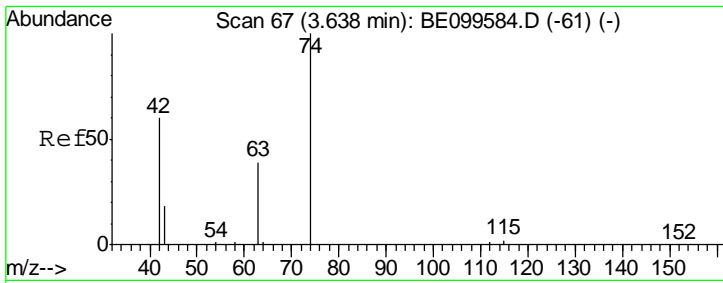
Sohil
 5/13/2019 8:33:18 PM



#2
 1,4-Dioxane
 Concen: 0.412 ng
 RT: 3.31 min Scan# 39
 Delta R.T. 0.01 min
 Lab File: BE099597.D
 Acq: 10 May 2019 11:01

Tgt Ion	Resp	Lower	Upper
88	1028		
88	100		
58	54.3	41.3	61.9
43	24.5	21.0	31.6





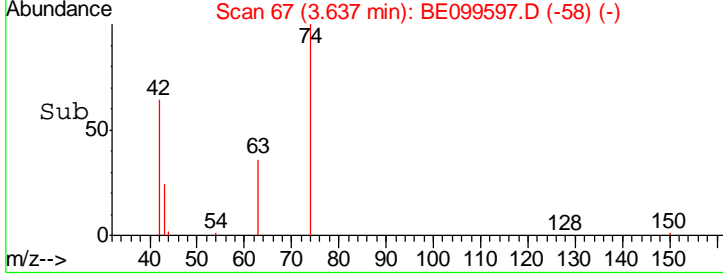
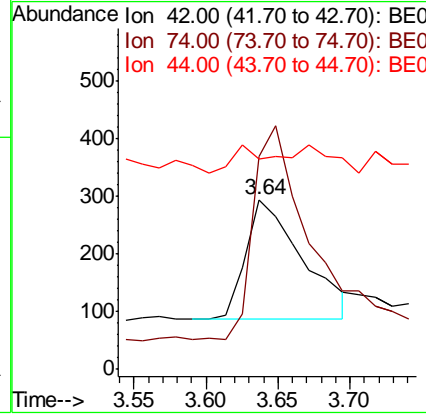
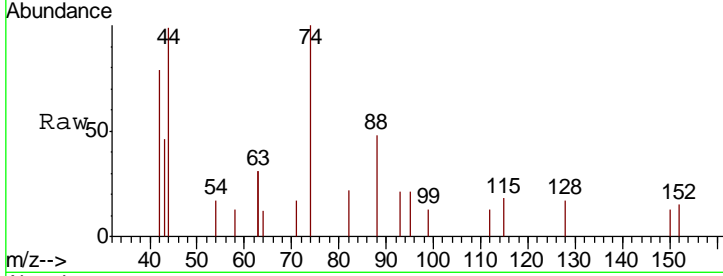
#3
 n-Nitrosodimethylamine
 Concen: 0.365 ng
 RT: 3.64 min Scan# 67
 Delta R.T. -0.00 min
 Lab File: BE099597.D
 Acq: 10 May 2019 11:01

Instrument :
 BNA_E
ClientSampled :
 SSTDCCC0.4

Tgt Ion	Resp	Lower	Upper
42	100		
74	0.0	136.9	205.3#
44	16.5	7.1	10.7#

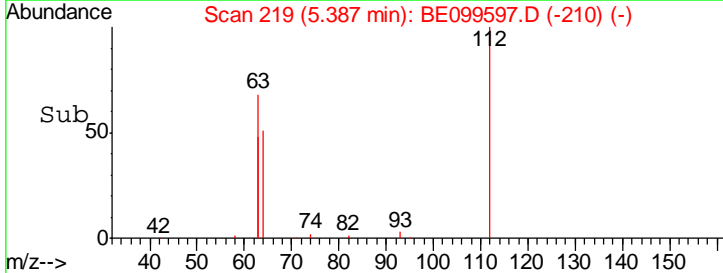
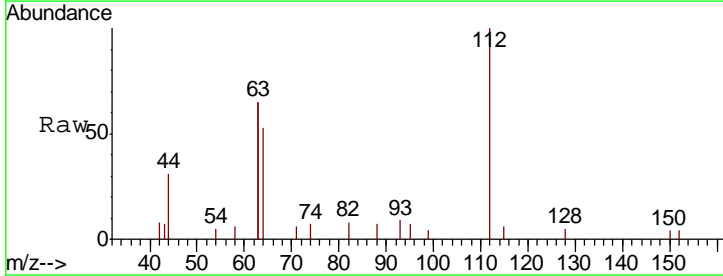
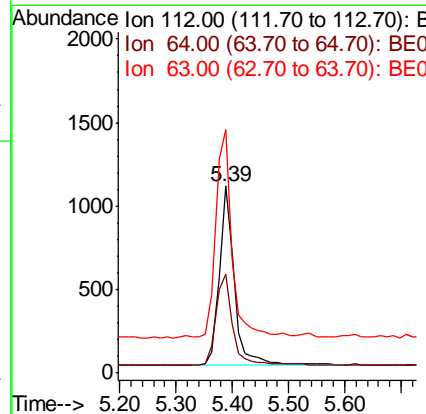
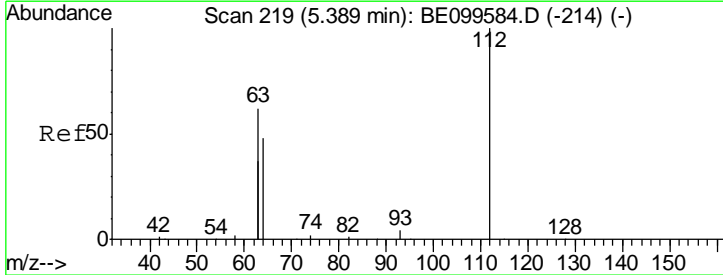
Manual Integrations
APPROVED

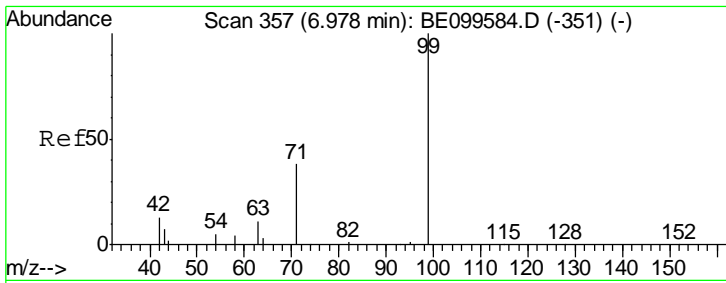
Sohil
 5/13/2019 8:33:18 PM



#4
 2-Fluorophenol
 Concen: 0.413 ng
 RT: 5.39 min Scan# 219
 Delta R.T. -0.00 min
 Lab File: BE099597.D
 Acq: 10 May 2019 11:01

Tgt Ion	Resp	Lower	Upper
112	100		
64	53.9	46.2	69.4
63	121.1	100.2	150.4





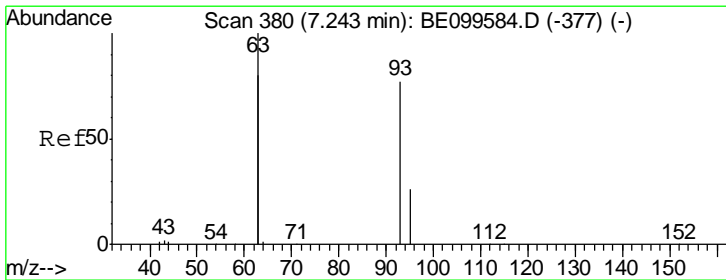
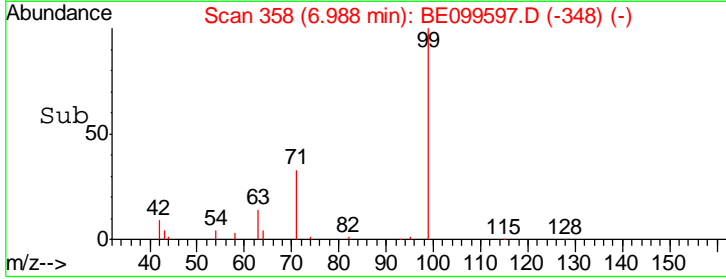
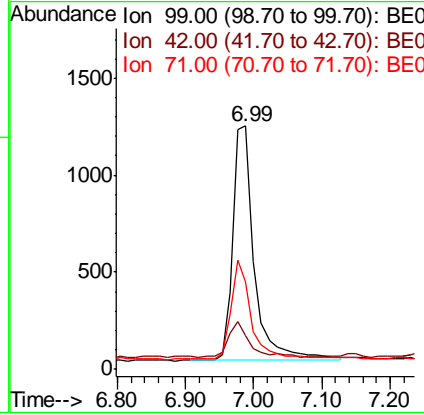
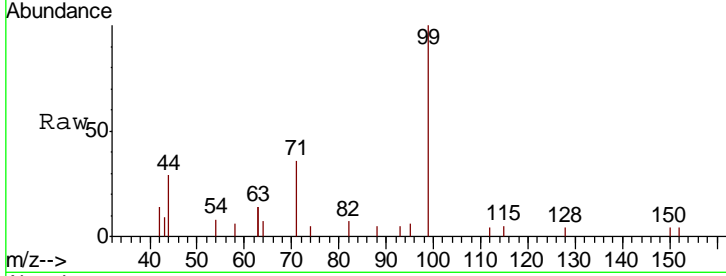
#5
 Phenol-d6
 Concen: 0.422 ng
 RT: 6.99 min Scan# 358
 Delta R.T. 0.01 min
 Lab File: BE099597.D
 Acq: 10 May 2019 11:01

Instrument :
 BNA_E
ClientSampled :
 SSTDCCC0.4

Tgt Ion	Resp	Lower	Upper
99	2685		
99	100		
42	14.5	13.8	20.8
71	38.9	32.2	48.4

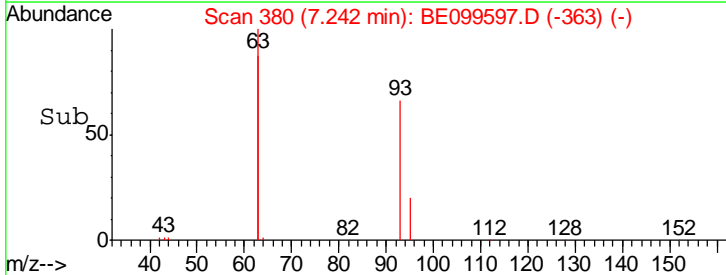
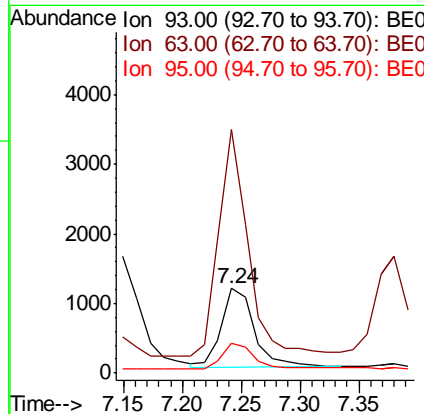
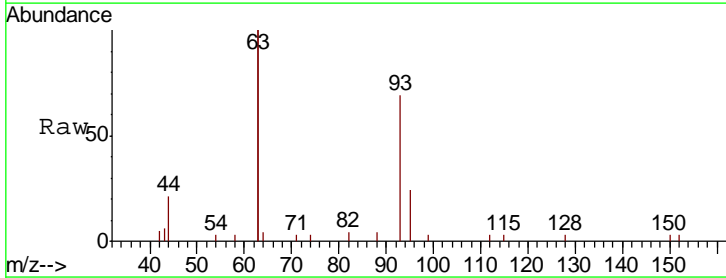
Manual Integrations
APPROVED

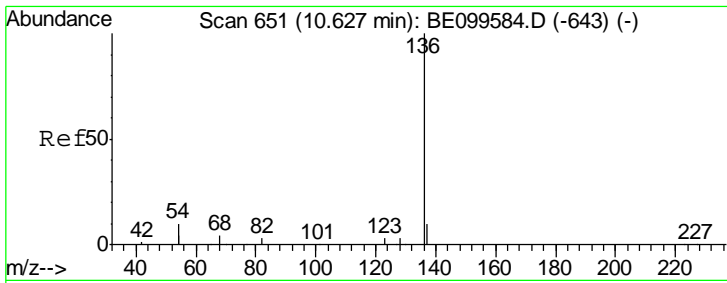
Sohil
 5/13/2019 8:33:18 PM



#6
 bis(2-Chloroethyl)ether
 Concen: 0.409 ng
 RT: 7.24 min Scan# 380
 Delta R.T. -0.00 min
 Lab File: BE099597.D
 Acq: 10 May 2019 11:01

Tgt Ion	Resp	Lower	Upper
93	2161		
93	100		
63	260.7	213.4	320.0
95	32.9	24.9	37.3





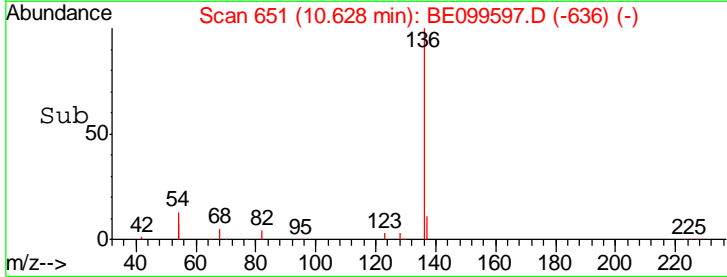
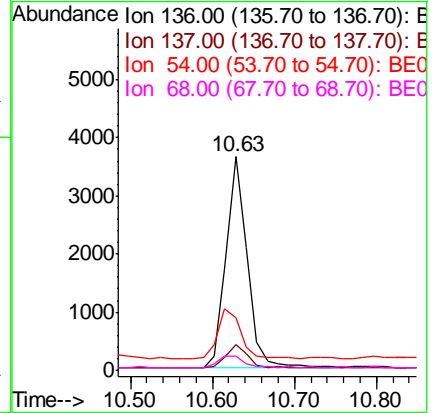
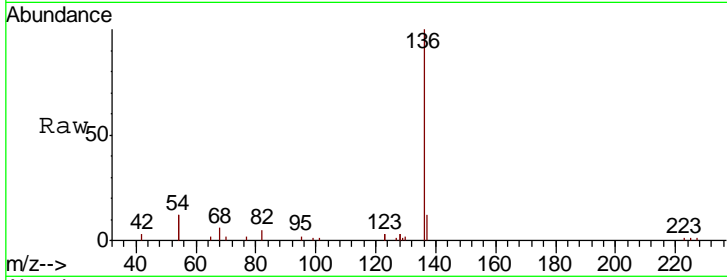
#7
 Naphthalene-d8
 Concen: 0.400 ng
 RT: 10.63 min Scan# 651
 Delta R.T. 0.00 min
 Lab File: BE099597.D
 Acq: 10 May 2019 11:01

Instrument :
 BNA_E
ClientSampled :
 SSTDCCC0.4

Tgt Ion	Resp	Lower	Upper
136	100		
137	11.8	9.1	13.7
54	24.7	16.5	24.7
68	6.5	4.5	6.7

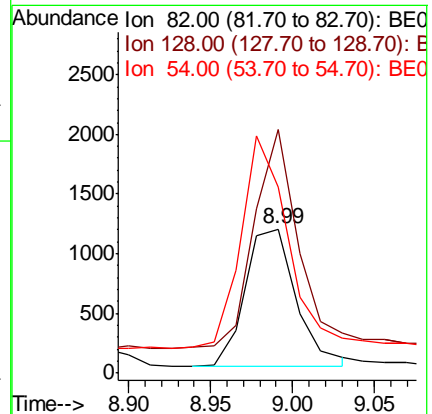
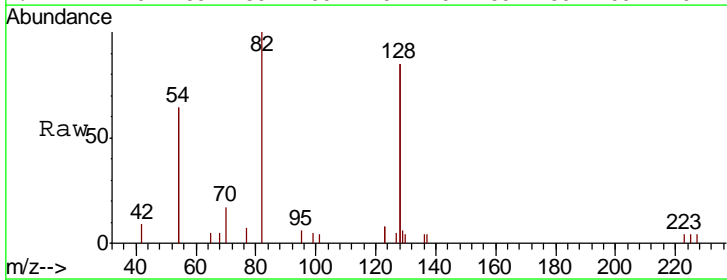
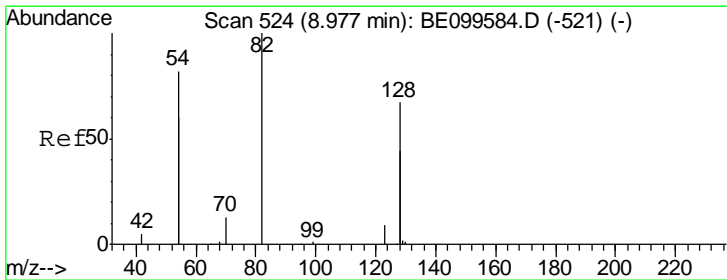
Manual Integrations
APPROVED

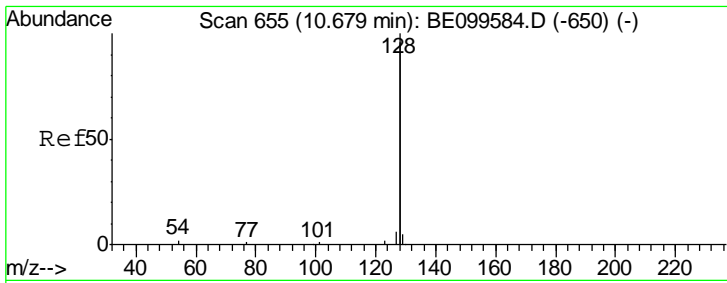
Sohil
 5/13/2019 8:33:18 PM



#8
 Nitrobenzene-d5
 Concen: 0.412 ng
 RT: 8.99 min Scan# 525
 Delta R.T. 0.01 min
 Lab File: BE099597.D
 Acq: 10 May 2019 11:01

Tgt Ion	Resp	Lower	Upper
82	100		
128	169.3	101.5	152.3#
54	129.0	123.8	185.6





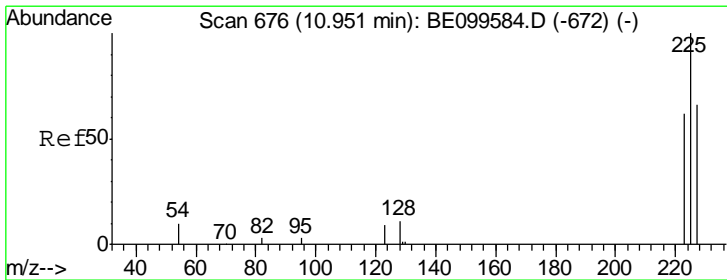
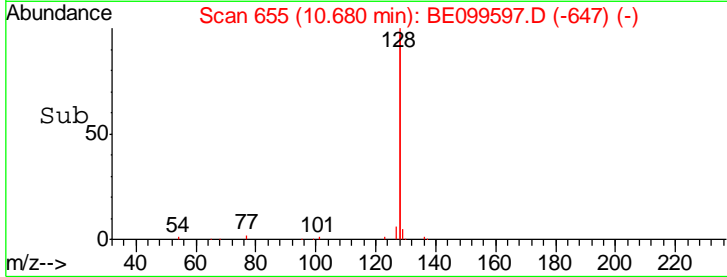
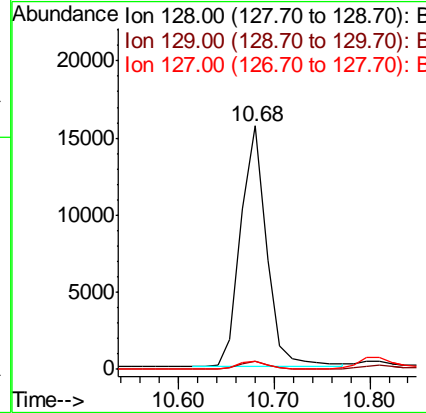
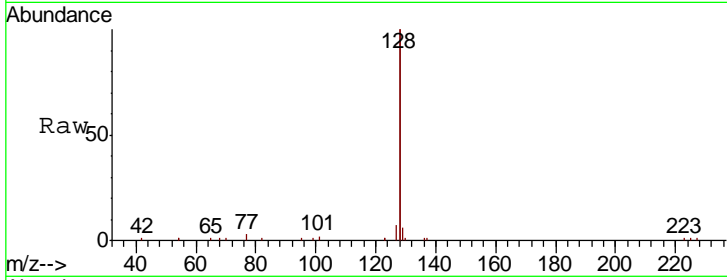
#9
 Naphthalene
 Concen: 0.416 ng
 RT: 10.68 min Scan# 655
 Delta R.T. 0.00 min
 Lab File: BE099597.D
 Acq: 10 May 2019 11:01

Instrument :
 BNA_E
ClientSampled :
 SSTDCCC0.4

Tgt Ion	Resp	Lower	Upper
128	100		
129	3.1	2.4	3.6
127	3.5	2.8	4.2

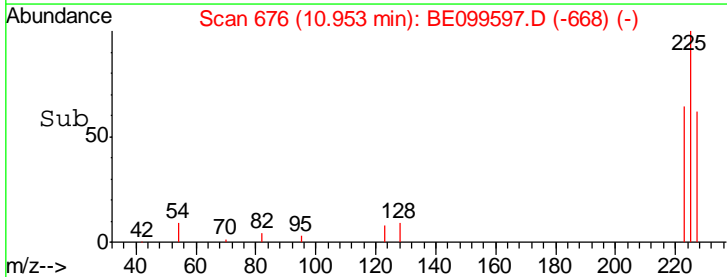
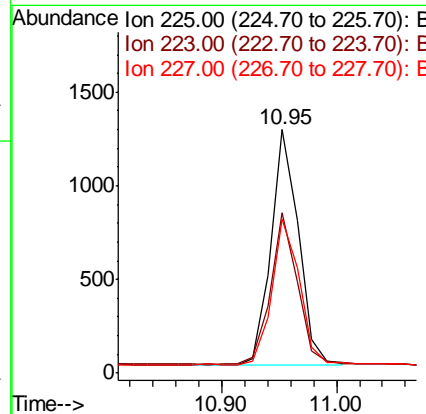
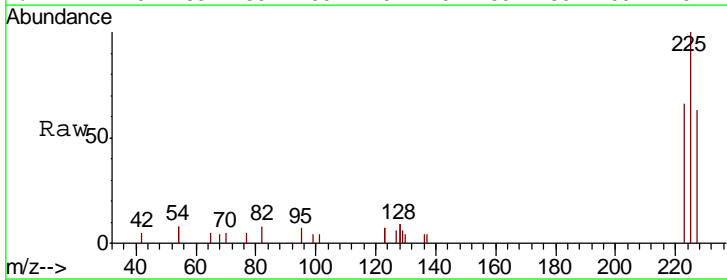
Manual Integrations
APPROVED

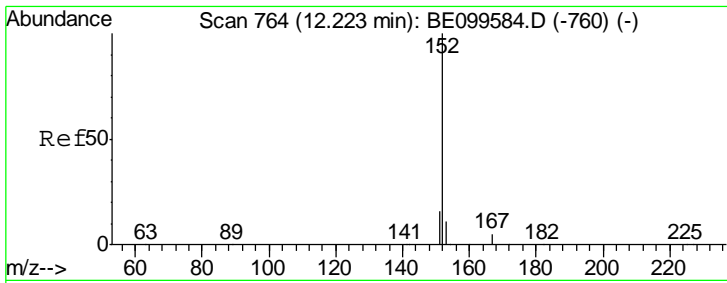
Sohil
 5/13/2019 8:33:18 PM



#10
 Hexachlorobutadiene
 Concen: 0.420 ng
 RT: 10.95 min Scan# 676
 Delta R.T. 0.00 min
 Lab File: BE099597.D
 Acq: 10 May 2019 11:01

Tgt Ion	Resp	Lower	Upper
225	100		
223	63.1	49.6	74.4
227	62.8	50.1	75.1





#11
 2-Methylnaphthalene-d10
 Concen: 0.412 ng
 RT: 12.22 min Scan# 764
 Delta R.T. 0.00 min
 Lab File: BE099597.D
 Acq: 10 May 2019 11:01

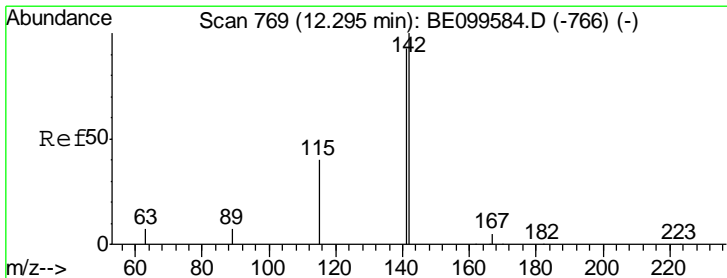
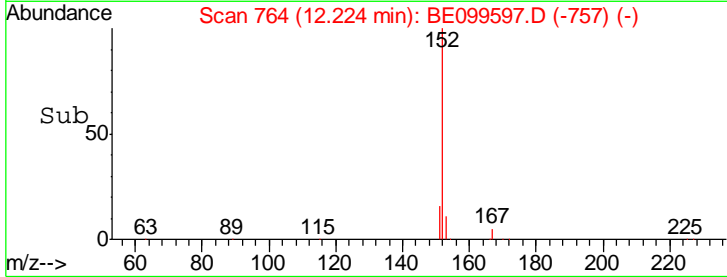
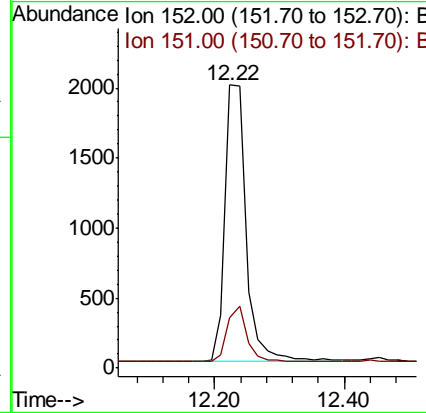
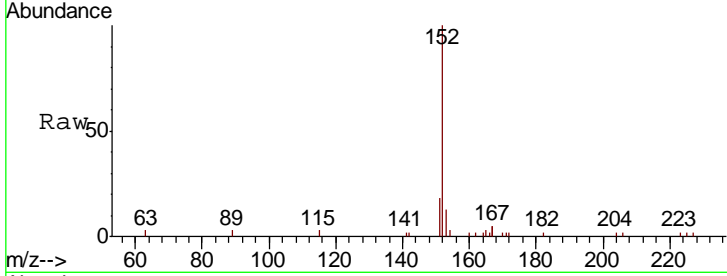
Instrument :
 BNA_E
ClientSampled :
 SSTDCCC0.4

Tgt Ion: 152 Resp: 4492

Ion	Ratio	Lower	Upper
152	100		
151	19.4	16.2	24.2

Manual Integrations
APPROVED

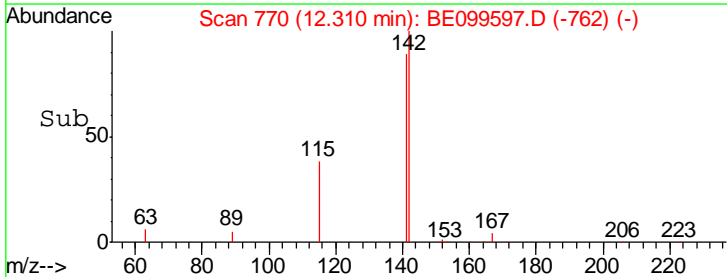
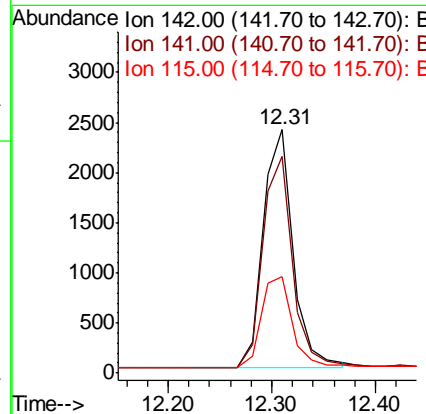
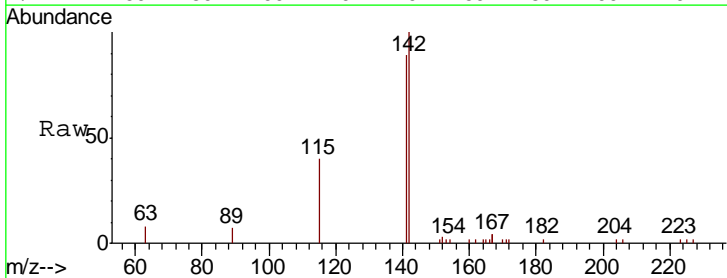
Sohil
 5/13/2019 8:33:18 PM

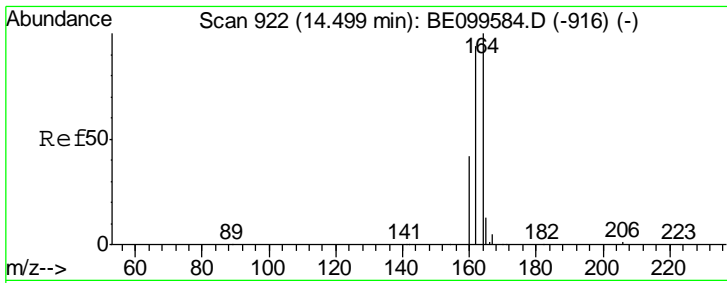


#12
 2-Methylnaphthalene
 Concen: 0.426 ng
 RT: 12.31 min Scan# 770
 Delta R.T. 0.02 min
 Lab File: BE099597.D
 Acq: 10 May 2019 11:01

Tgt Ion: 142 Resp: 4822

Ion	Ratio	Lower	Upper
142	100		
141	88.8	75.0	112.4
115	39.6	33.7	50.5



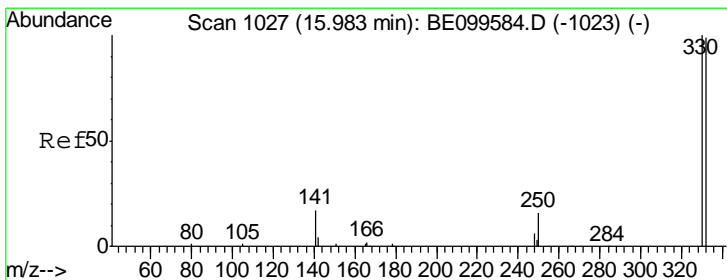
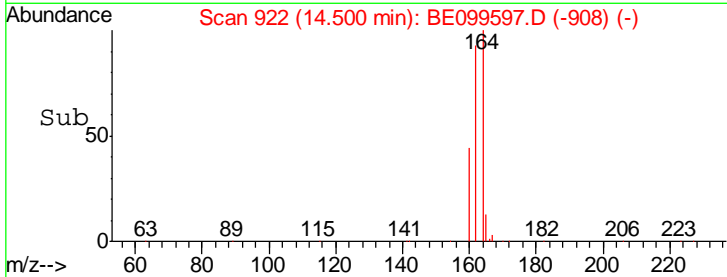
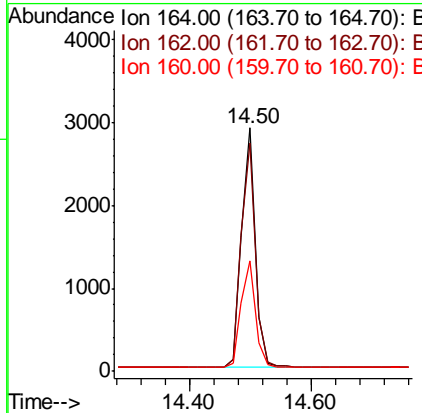
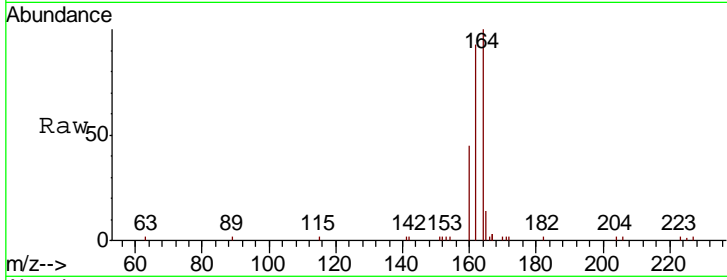


#13
 Acenaphthene-d10
 Concen: 0.400 ng
 RT: 14.50 min Scan# 922
 Delta R.T. 0.00 min
 Lab File: BE099597.D
 Acq: 10 May 2019 11:01

Instrument :
 BNA_E
ClientSampled :
 SSTDCCC0.4

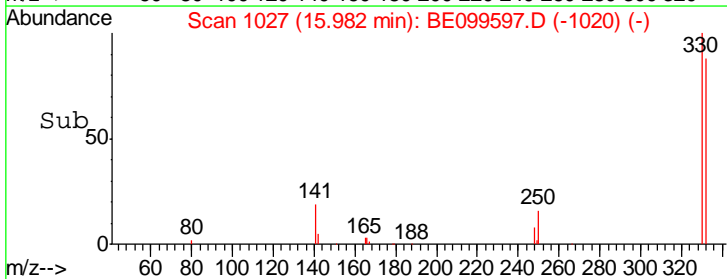
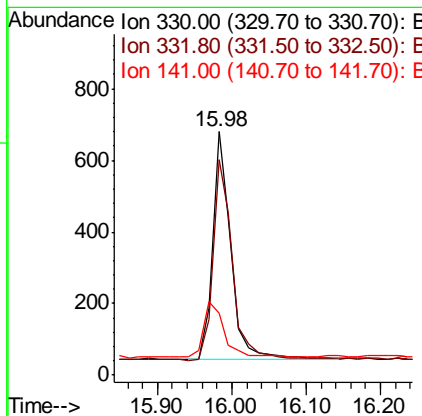
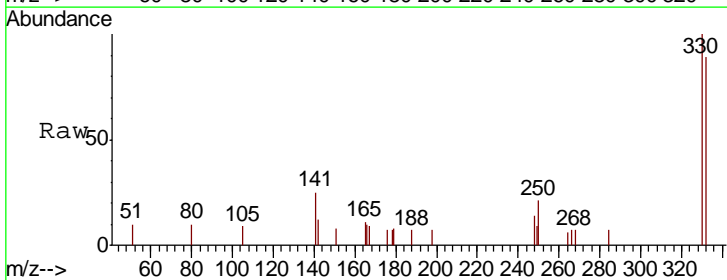
Tgt Ion	Resp	Lower	Upper
164	100		
162	93.5	75.3	112.9
160	45.3	34.7	52.1

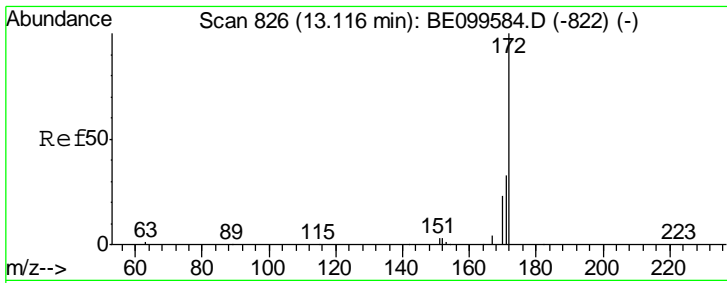
Manual Integrations
APPROVED
 Sohil
 5/13/2019 8:33:18 PM



#14
 2,4,6-Tribromophenol
 Concen: 0.408 ng
 RT: 15.98 min Scan# 1027
 Delta R.T. -0.00 min
 Lab File: BE099597.D
 Acq: 10 May 2019 11:01

Tgt Ion	Resp	Lower	Upper
330	100		
332	93.1	78.7	118.1
141	27.1	22.3	33.5





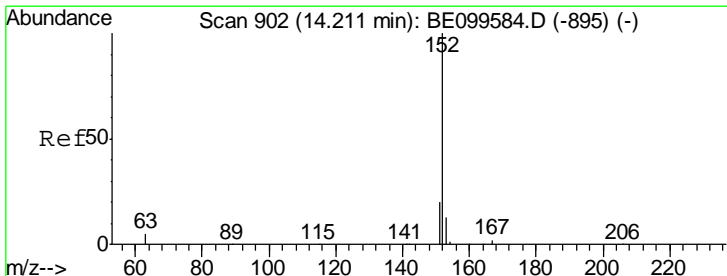
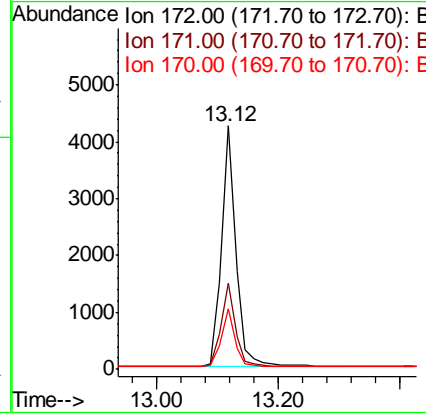
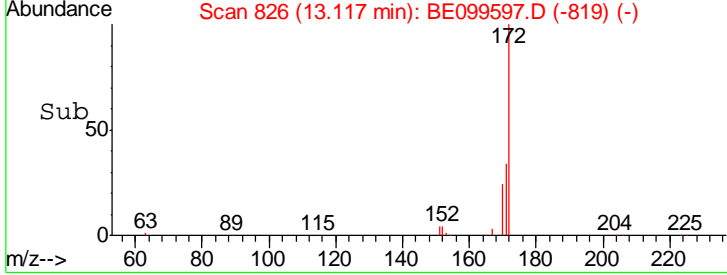
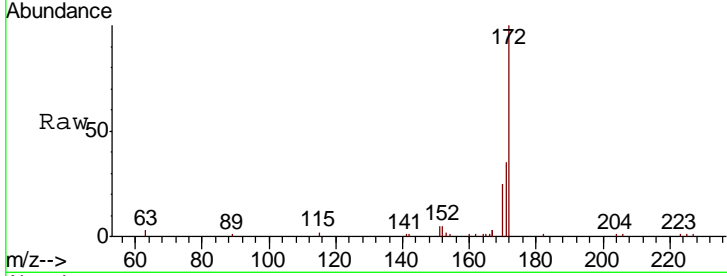
#15
 2-Fluorobiphenyl
 Concen: 0.396 ng
 RT: 13.12 min Scan# 826
 Delta R.T. 0.00 min
 Lab File: BE099597.D
 Acq: 10 May 2019 11:01

Instrument :
 BNA_E
ClientSampled :
 SSTDCCC0.4

Tgt Ion	Resp	Lower	Upper
172	100		
171	35.3	27.5	41.3
170	24.8	19.1	28.7

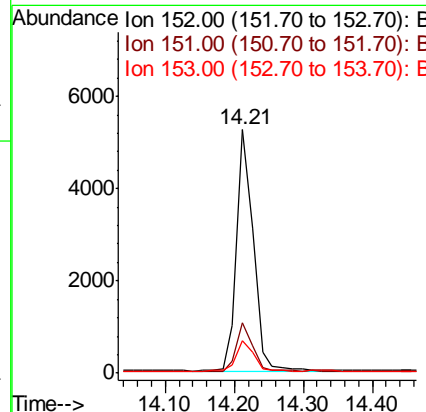
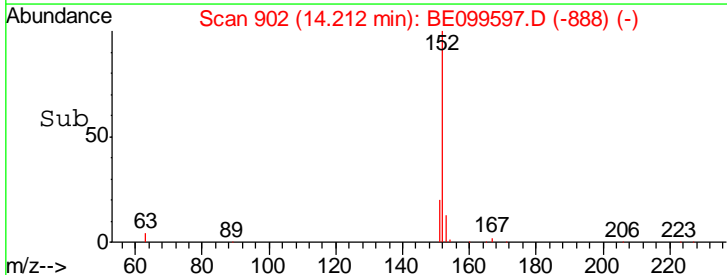
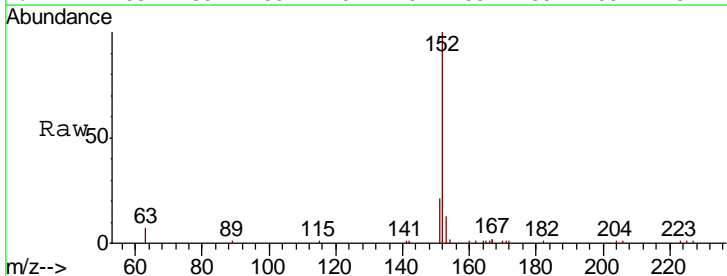
Manual Integrations
APPROVED

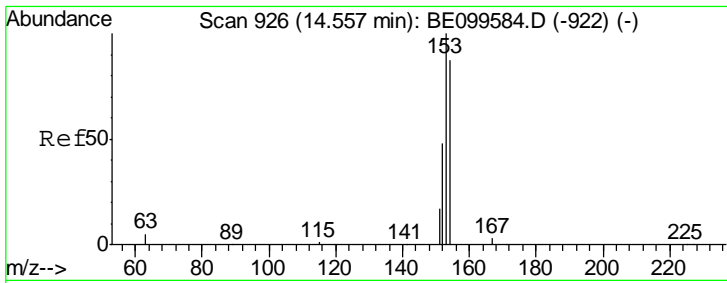
Sohil
 5/13/2019 8:33:18 PM



#16
 Acenaphthylene
 Concen: 0.394 ng
 RT: 14.21 min Scan# 902
 Delta R.T. 0.00 min
 Lab File: BE099597.D
 Acq: 10 May 2019 11:01

Tgt Ion	Resp	Lower	Upper
152	100		
151	19.1	15.5	23.3
153	12.9	10.2	15.4





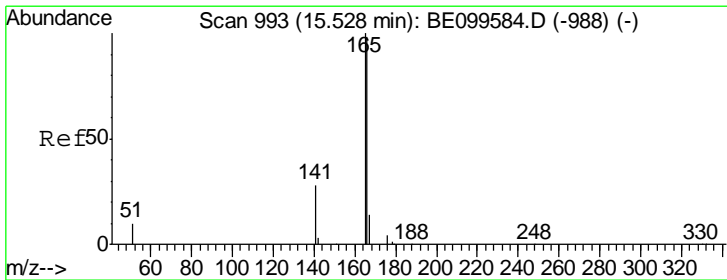
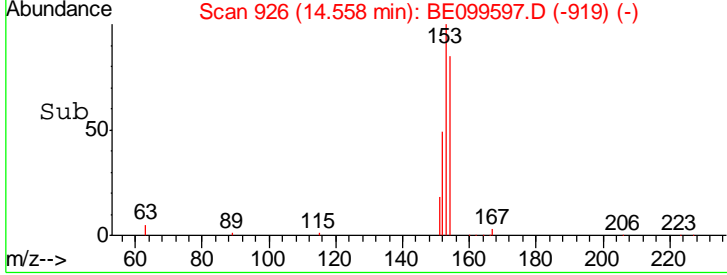
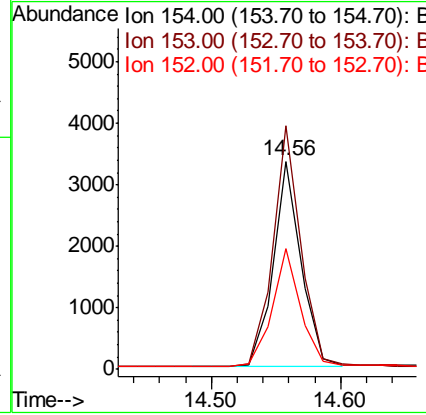
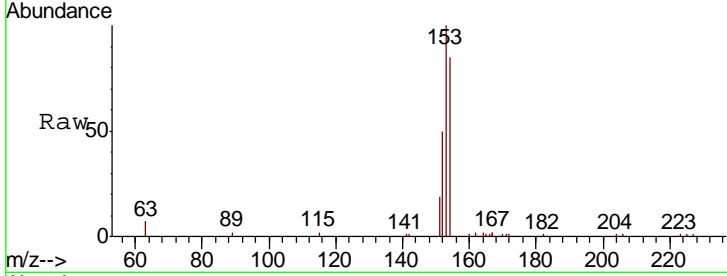
#17
 Acenaphthene
 Concen: 0.400 ng
 RT: 14.56 min Scan# 926
 Delta R.T. 0.00 min
 Lab File: BE099597.D
 Acq: 10 May 2019 11:01

Instrument :
 BNA_E
 ClientSampled :
 SSTDCCC0.4

Tgt Ion	Resp	Lower	Upper
154	100		
153	117.6	92.9	139.3
152	57.5	46.3	69.5

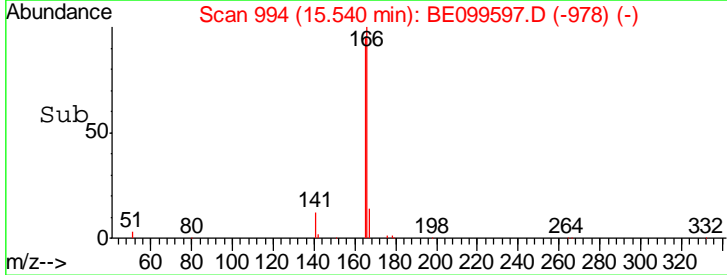
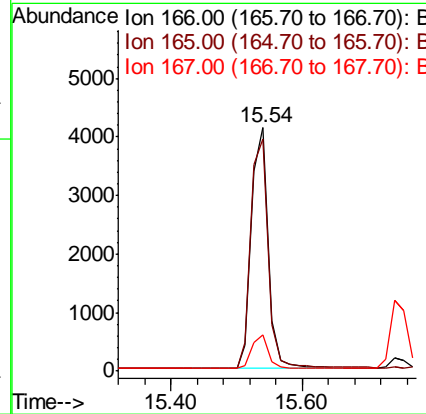
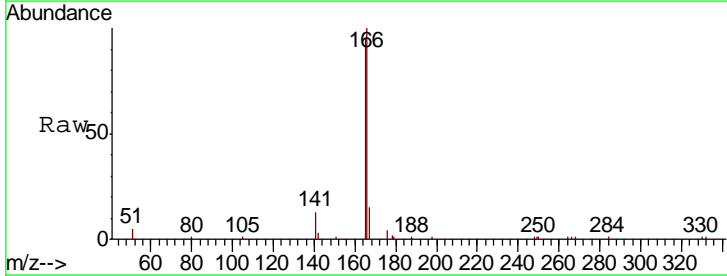
Manual Integrations
 APPROVED

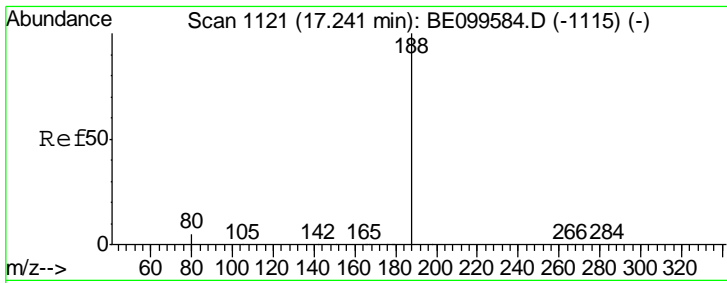
Sohil
 5/13/2019 8:33:18 PM



#18
 Fluorene
 Concen: 0.411 ng
 RT: 15.54 min Scan# 994
 Delta R.T. 0.01 min
 Lab File: BE099597.D
 Acq: 10 May 2019 11:01

Tgt Ion	Resp	Lower	Upper
166	100		
165	98.9	80.5	120.7
167	13.2	11.6	17.4



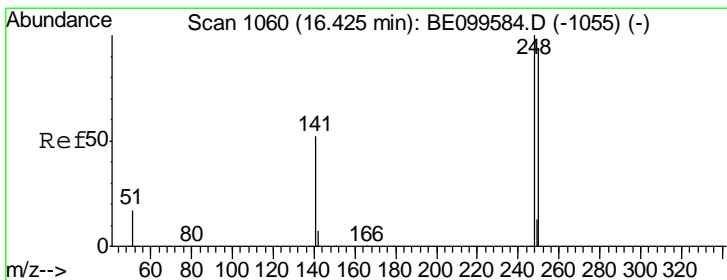
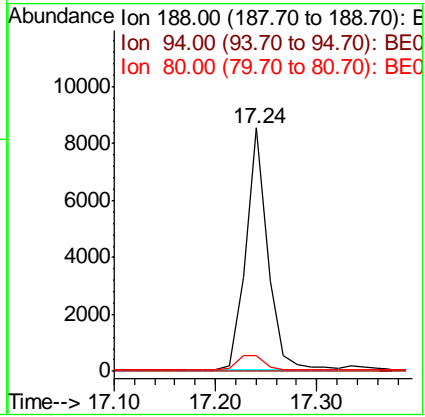
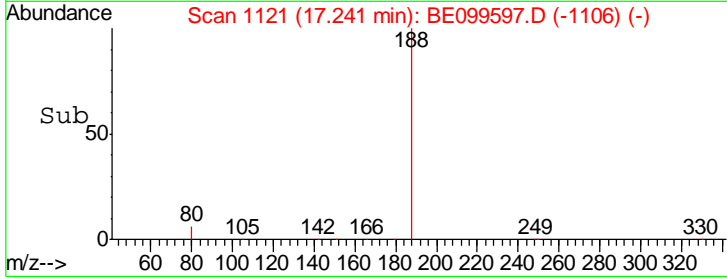
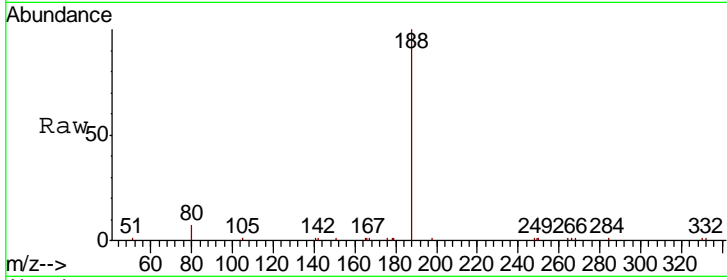


#19
 Phenanthrene-d10
 Concen: 0.400 ng
 RT: 17.24 min Scan# 1121
 Delta R.T. -0.00 min
 Lab File: BE099597.D
 Acq: 10 May 2019 11:01

Instrument :
 BNA_E
 ClientSampled :
 SSTDCCC0.4

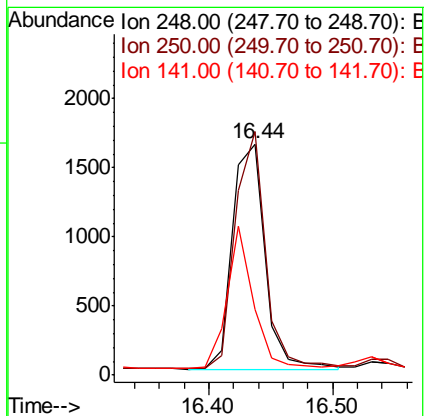
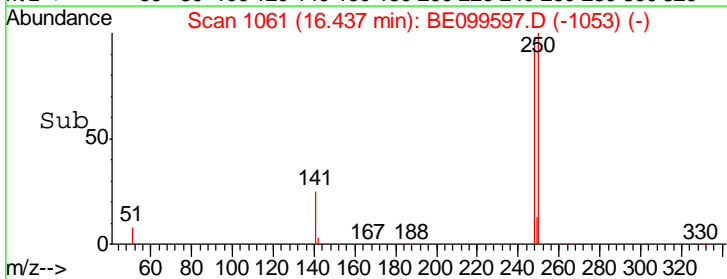
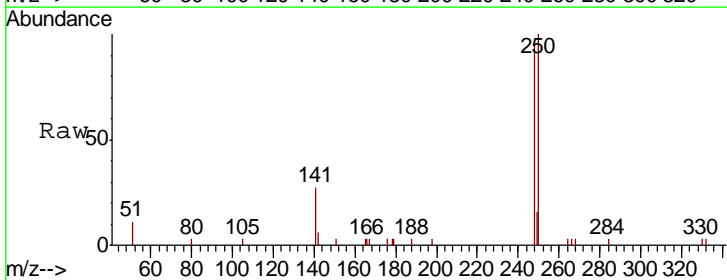
Tgt Ion	Ratio	Lower	Upper
188	100		
94	0.0	0.0	0.0
80	6.7	4.4	6.6#

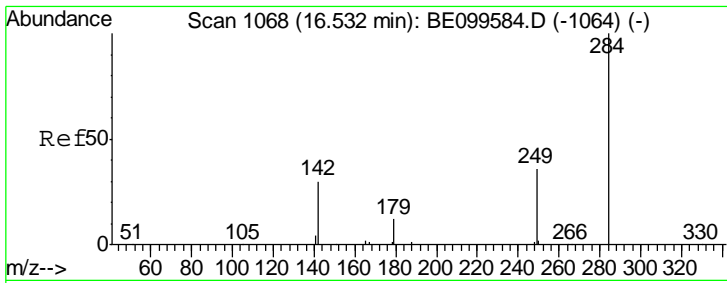
Manual Integrations
APPROVED
 Sohil
 5/13/2019 8:33:18 PM



#20
 4-Bromophenyl-phenylether
 Concen: 0.406 ng
 RT: 16.44 min Scan# 1061
 Delta R.T. 0.01 min
 Lab File: BE099597.D
 Acq: 10 May 2019 11:01

Tgt Ion	Ratio	Lower	Upper
248	100		
250	105.4	75.7	113.5
141	28.7	42.9	64.3#





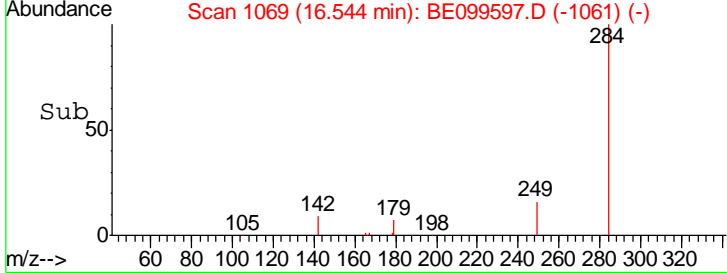
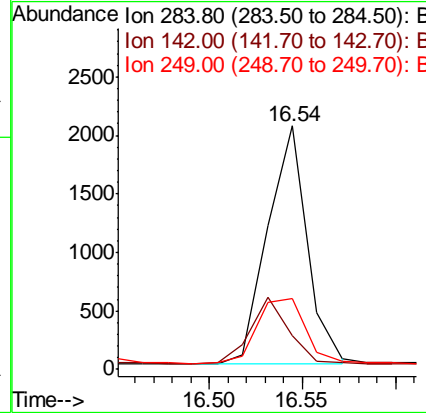
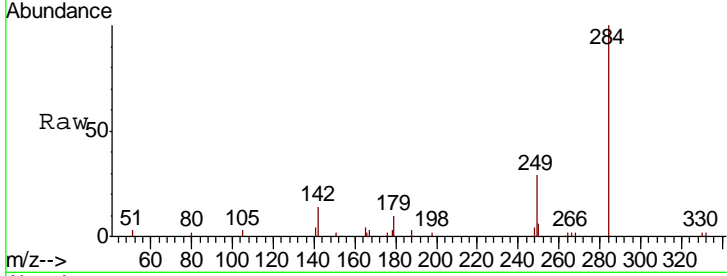
#21
 Hexachlorobenzene
 Concen: 0.412 ng
 RT: 16.54 min Scan# 1069
 Delta R.T. 0.01 min
 Lab File: BE099597.D
 Acq: 10 May 2019 11:01

Instrument :
 BNA_E
 ClientSampled :
 SSTDCCC0.4

Tgt Ion	Resp	Lower	Upper
284	3038		
284	100		
142	26.6	20.6	30.8
249	32.9	25.8	38.6

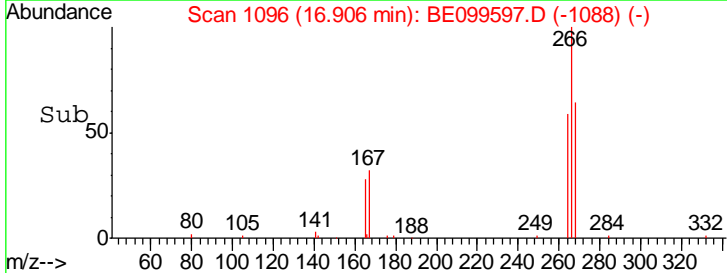
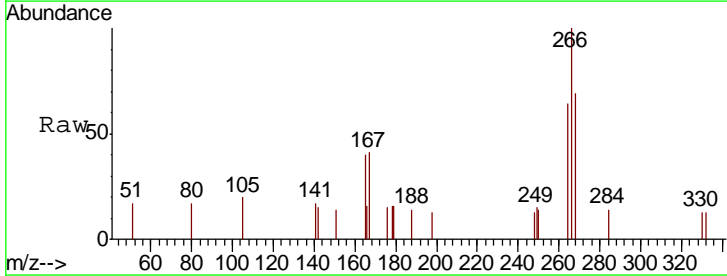
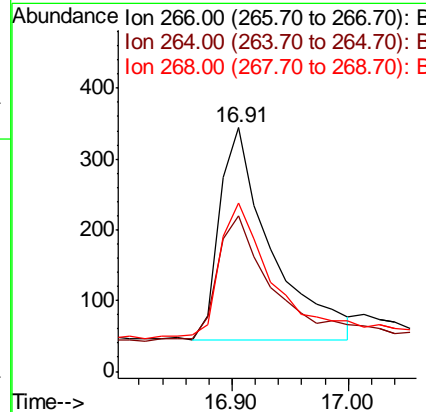
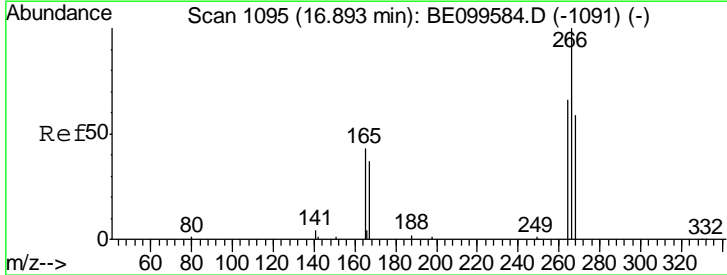
Manual Integrations
 APPROVED

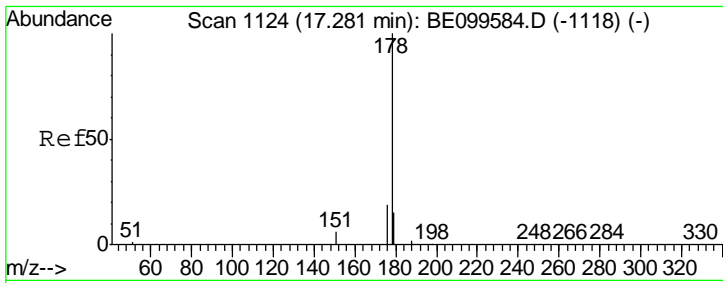
Sohil
 5/13/2019 8:33:18 PM



#22
 Pentachlorophenol
 Concen: 0.473 ng m
 RT: 16.91 min Scan# 1096
 Delta R.T. 0.01 min
 Lab File: BE099597.D
 Acq: 10 May 2019 11:01

Tgt Ion	Resp	Lower	Upper
266	924		
266	100		
264	63.7	57.3	85.9
268	69.2	53.5	80.3





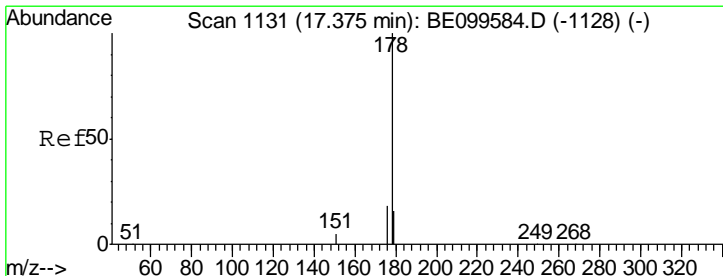
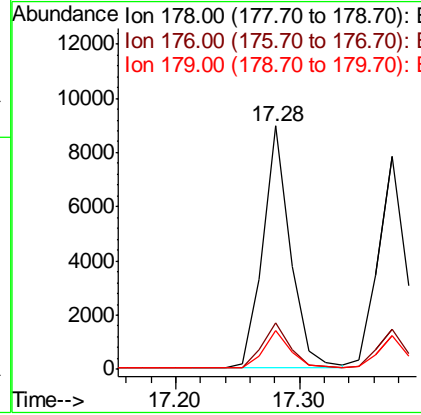
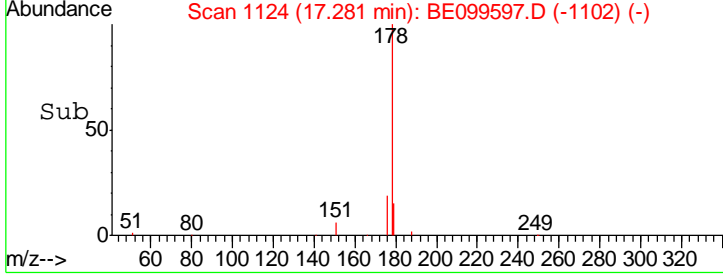
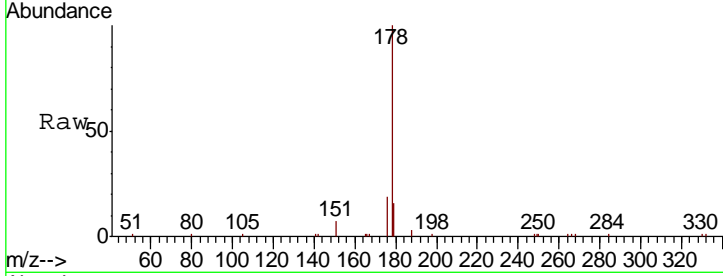
#23
 Phenanthrene
 Concen: 0.427 ng
 RT: 17.28 min Scan# 1124
 Delta R.T. -0.00 min
 Lab File: BE099597.D
 Acq: 10 May 2019 11:01

Instrument :
 BNA_E
 ClientSampled :
 SSTDCCC0.4

Tgt Ion	Resp	Lower	Upper
178	13669		
176	18.8	15.8	23.6
179	15.3	12.2	18.2

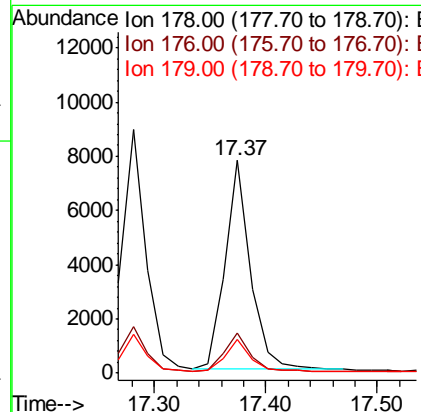
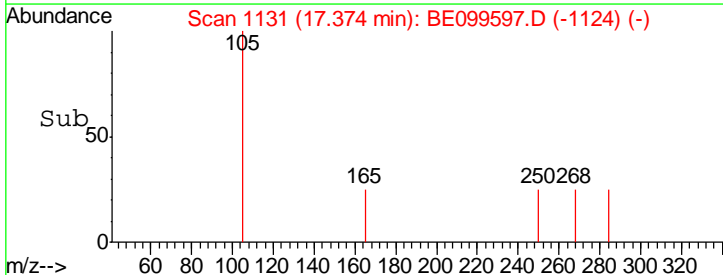
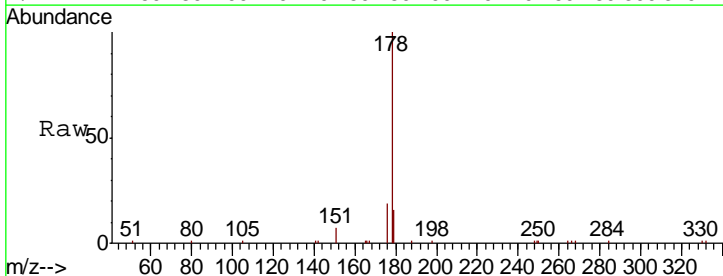
Manual Integrations
 APPROVED

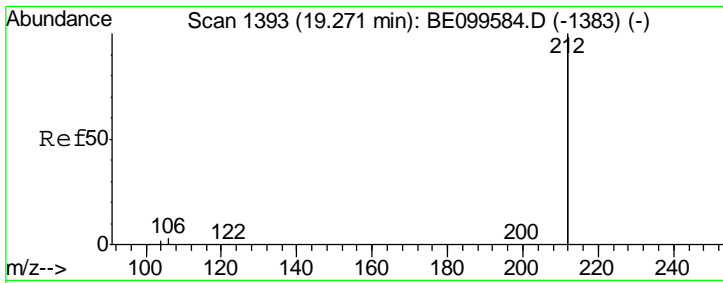
Sohil
 5/13/2019 8:33:18 PM



#24
 Anthracene
 Concen: 0.406 ng
 RT: 17.37 min Scan# 1131
 Delta R.T. -0.00 min
 Lab File: BE099597.D
 Acq: 10 May 2019 11:01

Tgt Ion	Resp	Lower	Upper
178	12200		
176	18.4	14.8	22.2
179	14.9	12.3	18.5





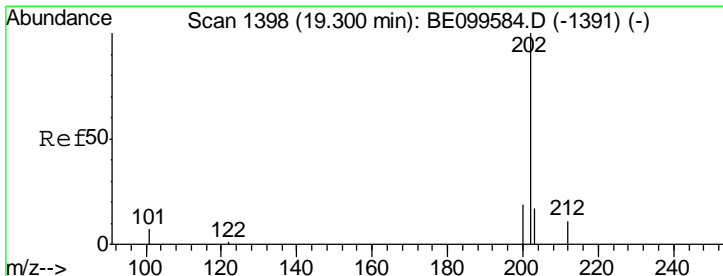
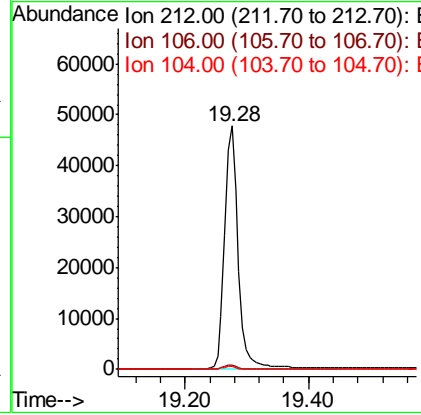
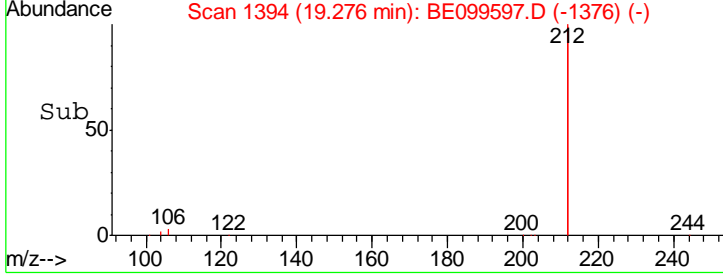
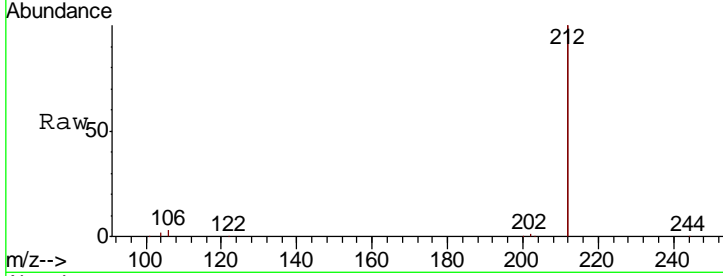
#25
 Fluoranthene-d10
 Concen: 0.420 ng
 RT: 19.28 min Scan# 1394
 Delta R.T. 0.00 min
 Lab File: BE099597.D
 Acq: 10 May 2019 11:01

Instrument :
 BNA_E
ClientSampled :
 SSTDCCC0.4

Tgt Ion	Resp	Lower	Upper
212	100		
106	1.8	1.4	2.2
104	1.0	0.9	1.3

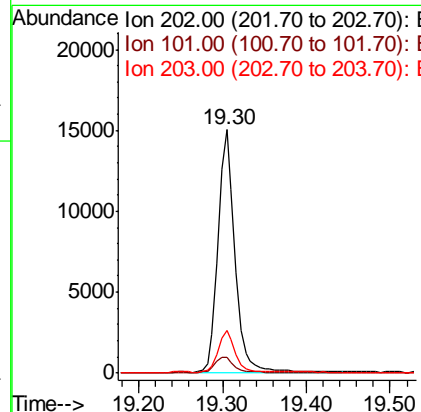
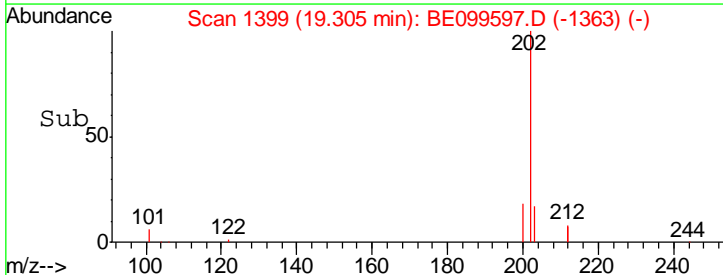
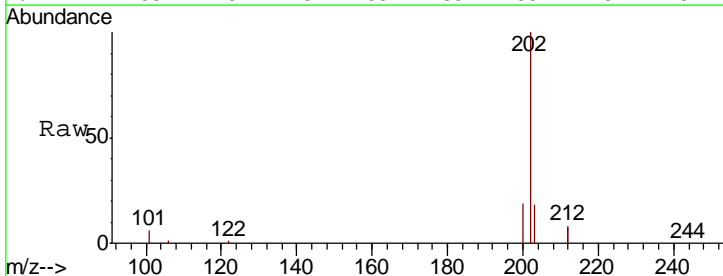
Manual Integrations
APPROVED

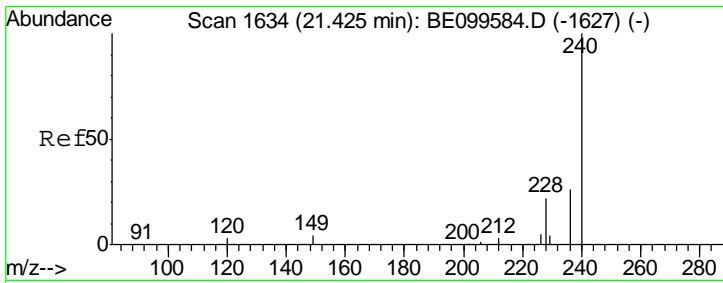
Sohil
 5/13/2019 8:33:18 PM



#26
 Fluoranthene
 Concen: 0.437 ng
 RT: 19.30 min Scan# 1399
 Delta R.T. 0.00 min
 Lab File: BE099597.D
 Acq: 10 May 2019 11:01

Tgt Ion	Resp	Lower	Upper
202	100		
101	6.9	5.4	8.2
203	16.9	13.7	20.5





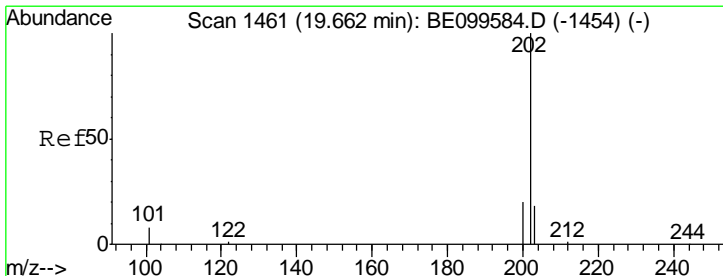
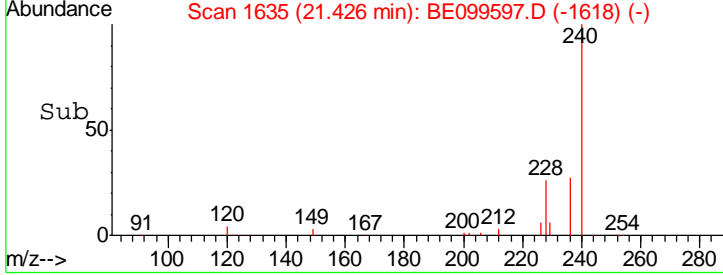
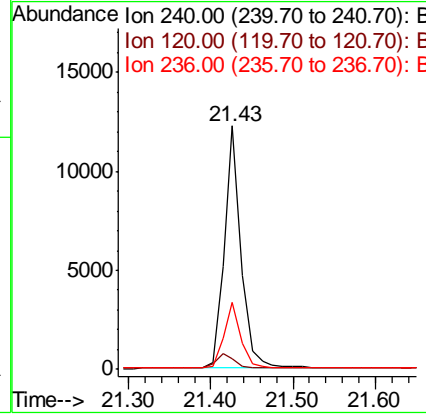
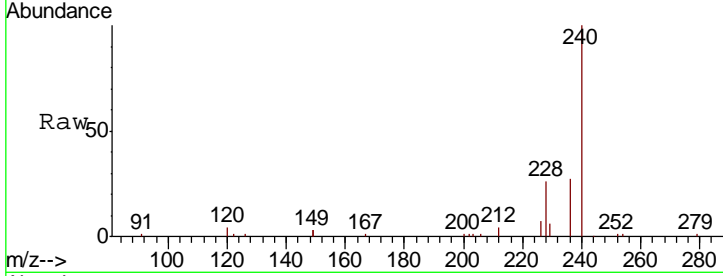
#27
 Chrysene-d12
 Concen: 0.400 ng
 RT: 21.43 min Scan# 1635
 Delta R.T. 0.00 min
 Lab File: BE099597.D
 Acq: 10 May 2019 11:01

Instrument :
 BNA_E
ClientSampled :
 SSTDCCC0.4

Tgt Ion	Ratio	Lower	Upper
240	100		
120	4.2	3.2	4.8
236	27.3	21.0	31.6

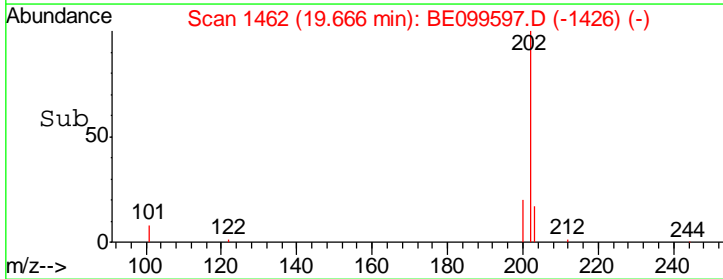
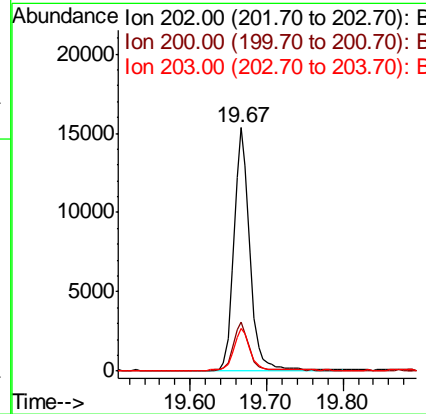
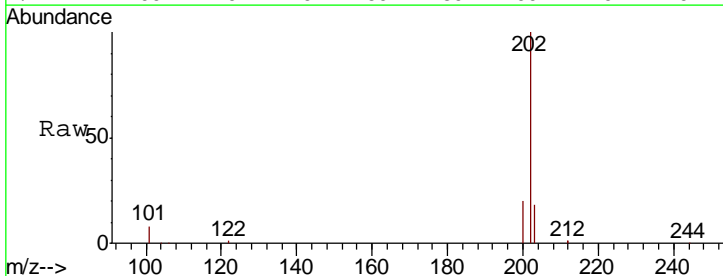
Manual Integrations
APPROVED

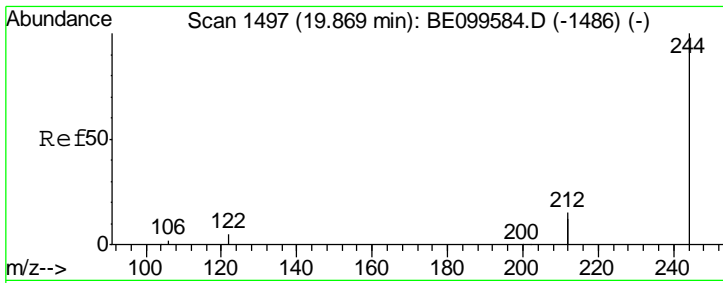
Sohil
 5/13/2019 8:33:18 PM



#28
 Pyrene
 Concen: 0.478 ng
 RT: 19.67 min Scan# 1462
 Delta R.T. 0.00 min
 Lab File: BE099597.D
 Acq: 10 May 2019 11:01

Tgt Ion	Ratio	Lower	Upper
202	100		
200	19.5	15.9	23.9
203	17.5	14.1	21.1



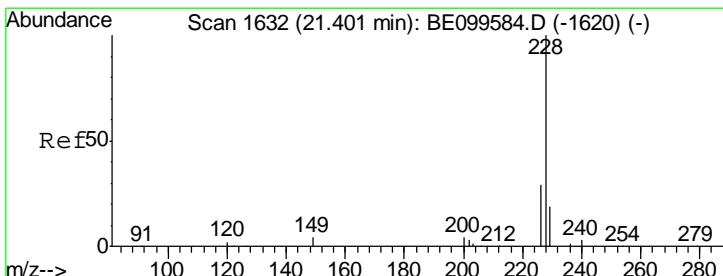
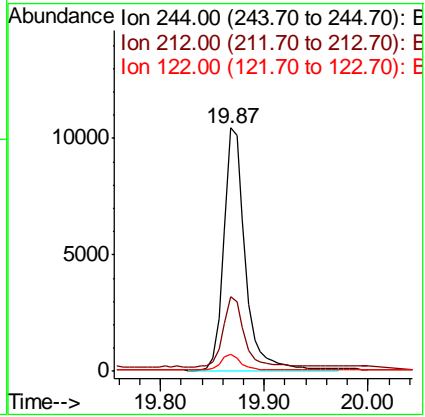
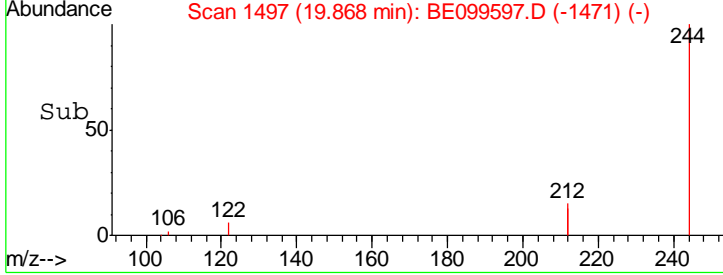
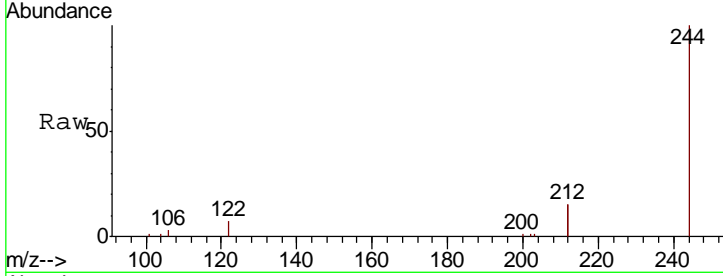


#29
 Terphenyl-d14
 Concen: 0.478 ng
 RT: 19.87 min Scan# 1497
 Delta R.T. -0.00 min
 Lab File: BE099597.D
 Acq: 10 May 2019 11:01

Instrument :
 BNA_E
 ClientSampled :
 SSTDCCC0.4

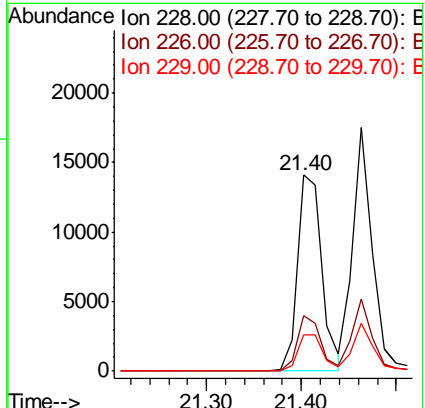
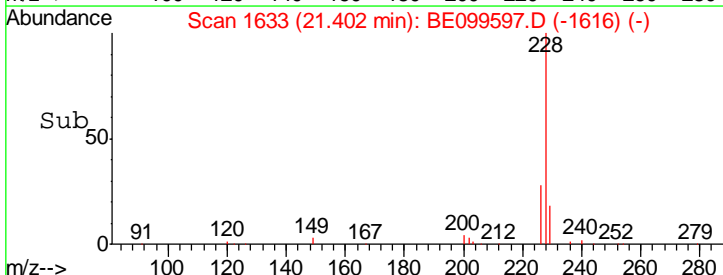
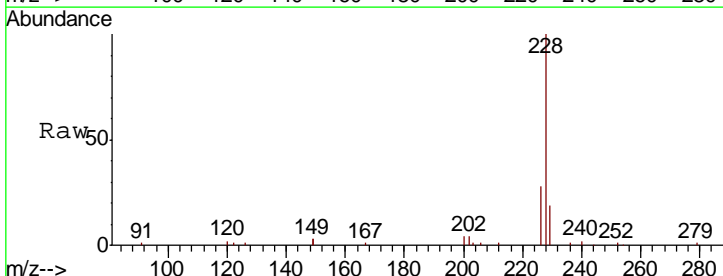
Tgt Ion	Ratio	Lower	Upper
244	100		
212	30.8	24.4	36.6
122	6.8	4.6	6.8#

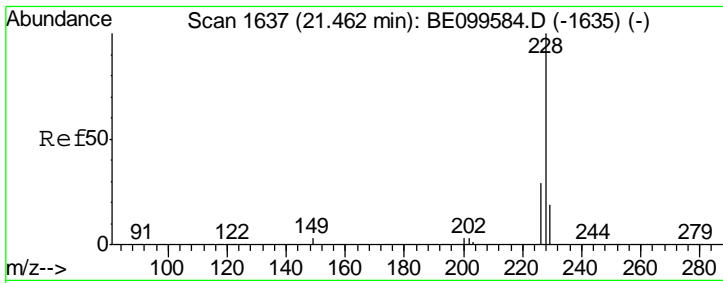
Manual Integrations
APPROVED
 Sohil
 5/13/2019 8:33:18 PM



#30
 Benzo(a)anthracene
 Concen: 0.461 ng
 RT: 21.40 min Scan# 1633
 Delta R.T. 0.00 min
 Lab File: BE099597.D
 Acq: 10 May 2019 11:01

Tgt Ion	Ratio	Lower	Upper
228	100		
226	28.1	23.3	34.9
229	18.8	15.5	23.3





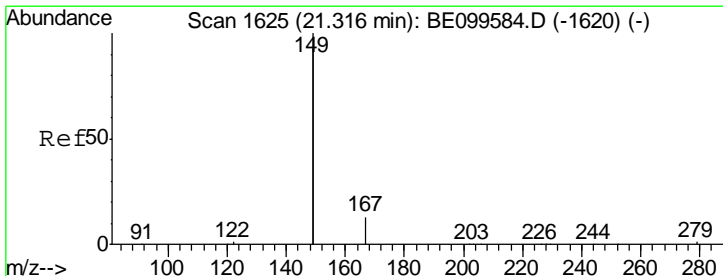
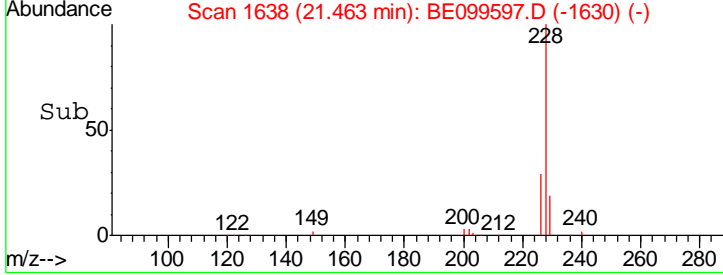
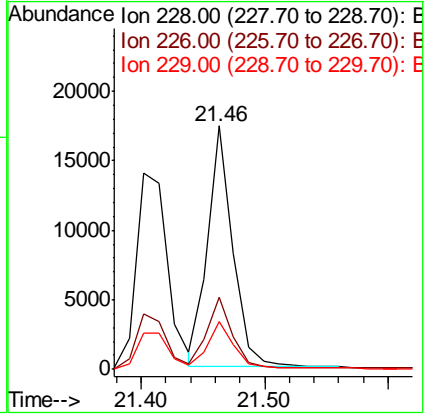
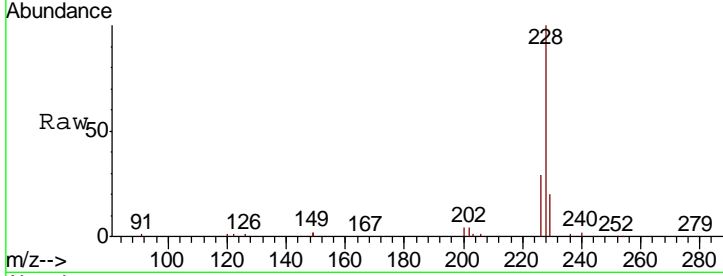
#31
 Chrysene
 Concen: 0.462 ng
 RT: 21.46 min Scan# 1638
 Delta R.T. 0.00 min
 Lab File: BE099597.D
 Acq: 10 May 2019 11:01

Instrument :
 BNA_E
 ClientSampled :
 SSTDCCC0.4

Tgt Ion	Resp	Lower	Upper
228	100		
226	29.4	23.2	34.8
229	19.5	15.6	23.4

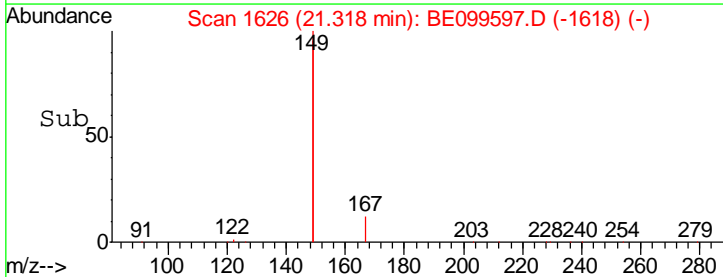
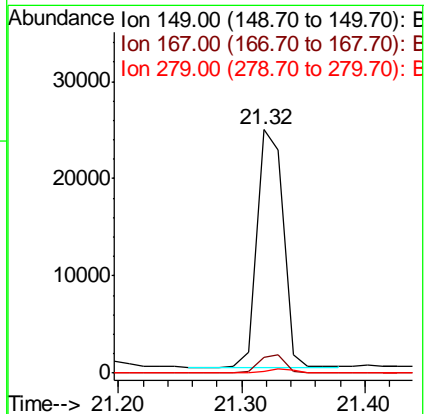
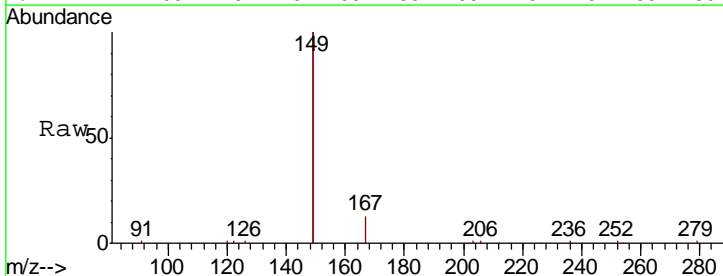
Manual Integrations
 APPROVED

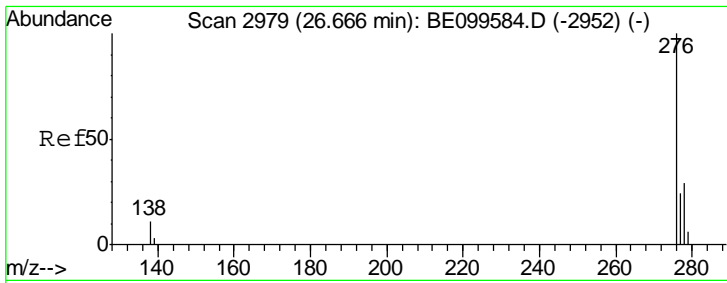
Sohil
 5/13/2019 8:33:18 PM



#32
 Bis(2-ethylhexyl)phthalate
 Concen: 0.470 ng
 RT: 21.32 min Scan# 1626
 Delta R.T. 0.00 min
 Lab File: BE099597.D
 Acq: 10 May 2019 11:01

Tgt Ion	Resp	Lower	Upper
149	100		
167	7.3	6.0	9.0
279	1.5	1.1	1.7





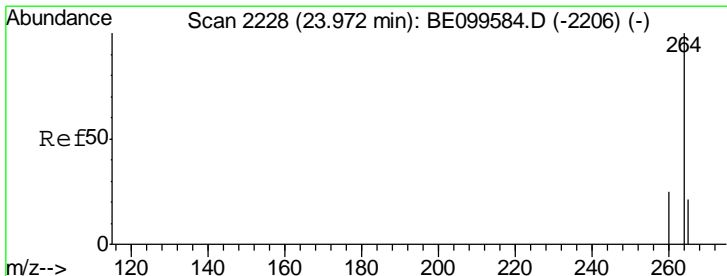
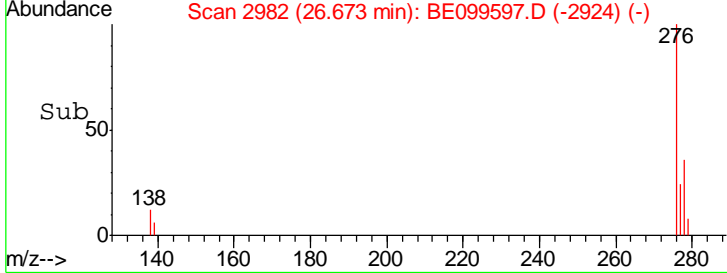
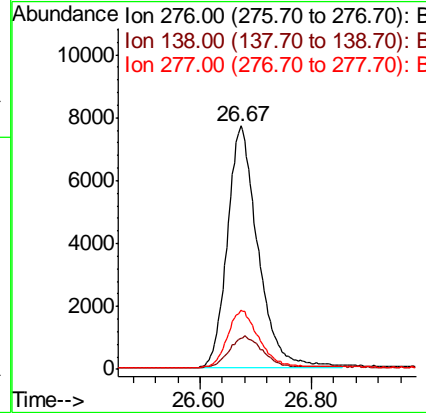
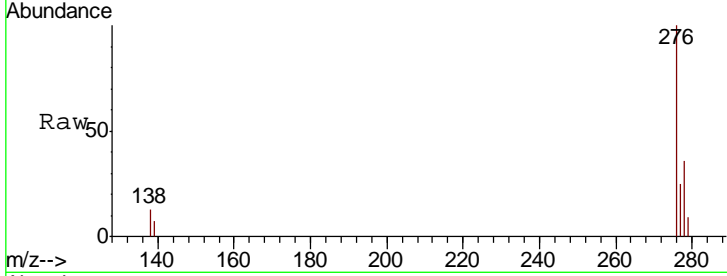
#33
 Indeno(1,2,3-cd)pyrene
 Concen: 0.438 ng
 RT: 26.67 min Scan# 2982
 Delta R.T. 0.01 min
 Lab File: BE099597.D
 Acq: 10 May 2019 11:01

Instrument :
 BNA_E
 ClientSampled :
 SSTCCCC0.4

Tgt Ion	Resp	Lower	Upper
276	29229		
276	100		
138	13.7	10.2	15.2
277	24.2	19.8	29.8

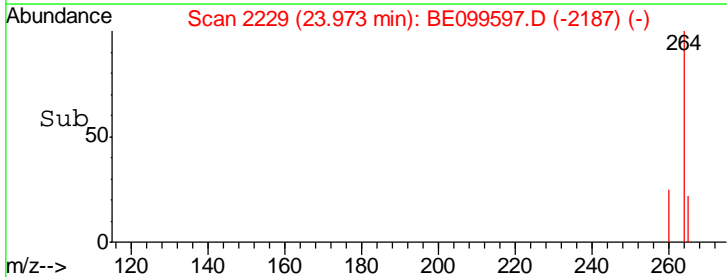
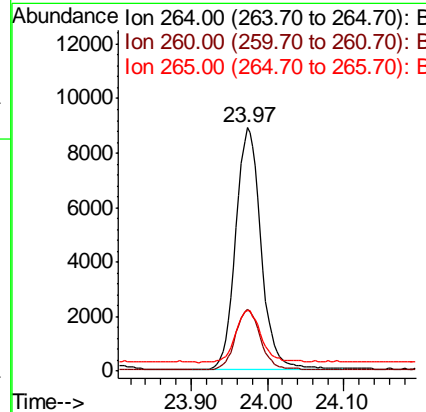
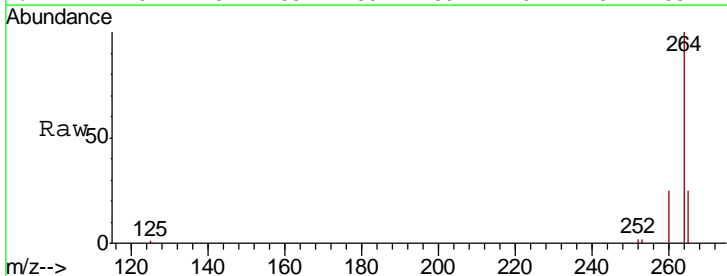
Manual Integrations
 APPROVED

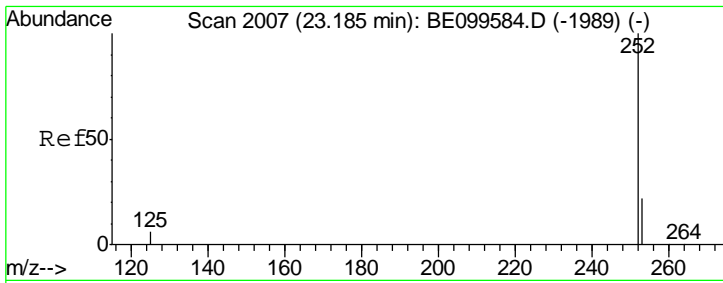
Sohil
 5/13/2019 8:33:18 PM



#34
 Perylene-d12
 Concen: 0.400 ng
 RT: 23.97 min Scan# 2229
 Delta R.T. 0.00 min
 Lab File: BE099597.D
 Acq: 10 May 2019 11:01

Tgt Ion	Resp	Lower	Upper
264	20673		
264	100		
260	25.3	20.3	30.5
265	25.0	20.9	31.3



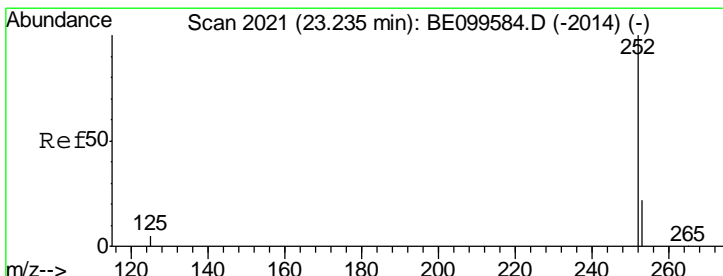
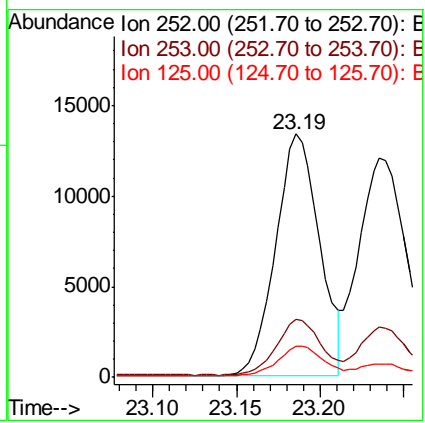
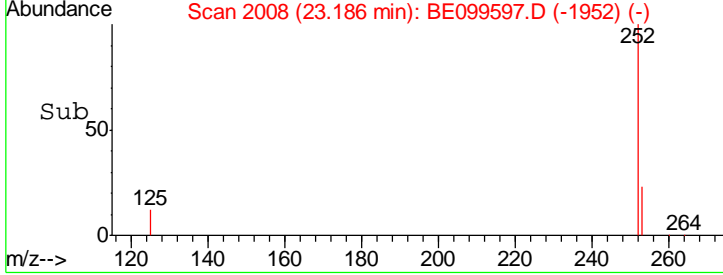
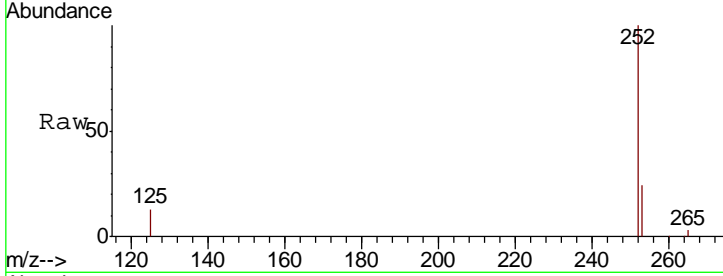


#35
 Benzo(b)fluoranthene
 Concen: 0.427 ng
 RT: 23.19 min Scan# 2008
 Delta R.T. 0.00 min
 Lab File: BE099597.D
 Acq: 10 May 2019 11:01

Instrument : BNA_E
 Client Sampled : SSTDCCC0.4

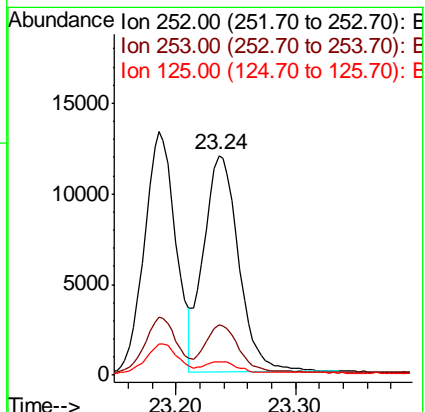
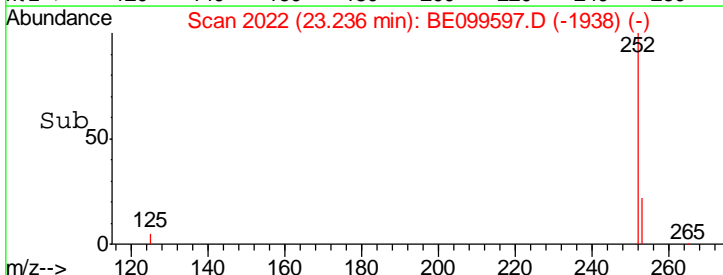
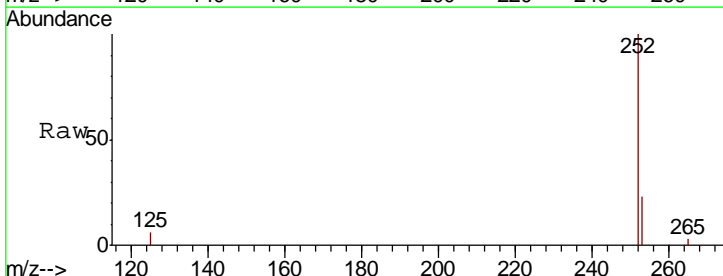
Tgt Ion	Resp	Lower	Upper
252	24405		
253	23.7	18.6	28.0
125	12.7	6.0	9.0#

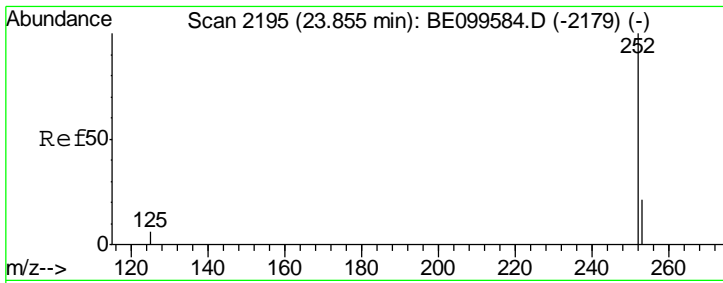
Manual Integrations
APPROVED
 Sohil
 5/13/2019 8:33:18 PM



#36
 Benzo(k)fluoranthene
 Concen: 0.431 ng
 RT: 23.24 min Scan# 2022
 Delta R.T. 0.00 min
 Lab File: BE099597.D
 Acq: 10 May 2019 11:01

Tgt Ion	Resp	Lower	Upper
252	24457		
253	22.8	18.7	28.1
125	5.8	5.1	7.7





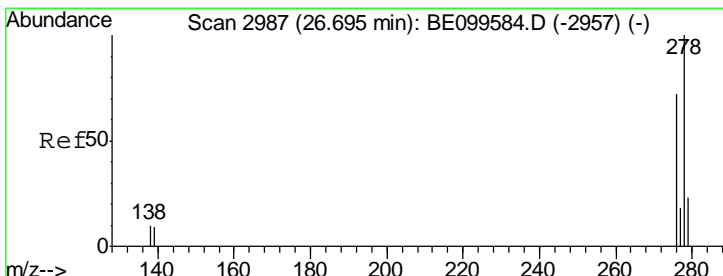
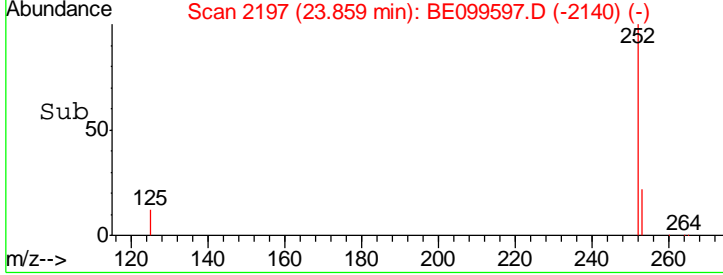
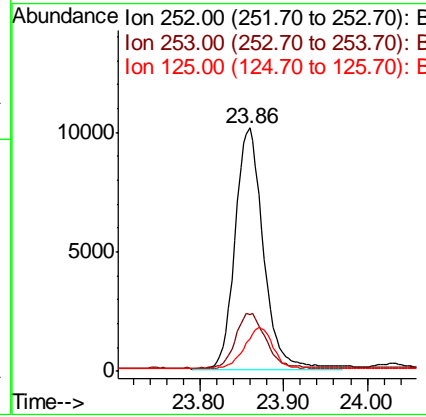
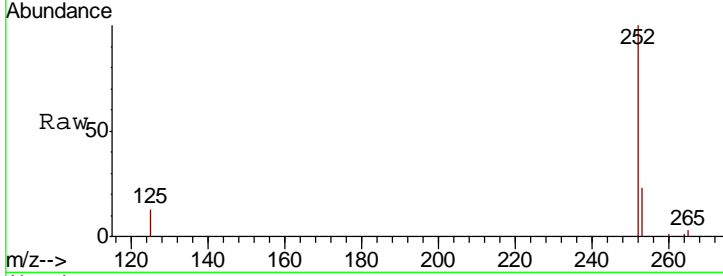
#37
 Benzo(a)pyrene
 Concen: 0.427 ng
 RT: 23.86 min Scan# 2197
 Delta R.T. 0.00 min
 Lab File: BE099597.D
 Acq: 10 May 2019 11:01

Instrument :
 BNA_E
 ClientSampled :
 SSTDCCC0.4

Tgt Ion	Resp	Lower	Upper
252	23605		
253	23.4	18.6	27.8
125	13.4	6.4	9.6#

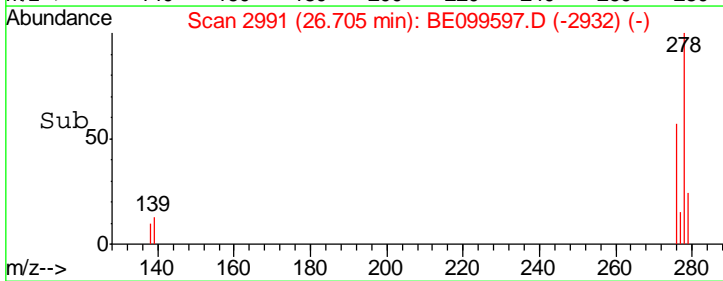
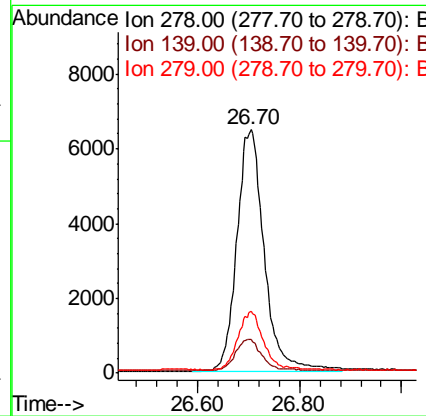
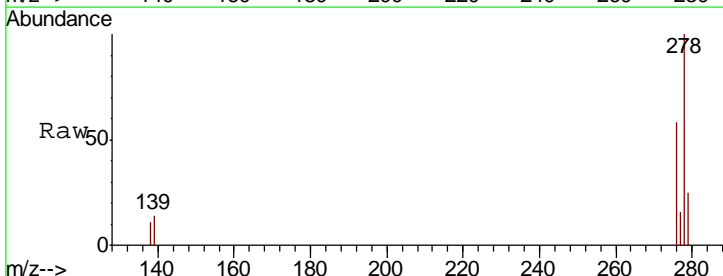
Manual Integrations
 APPROVED

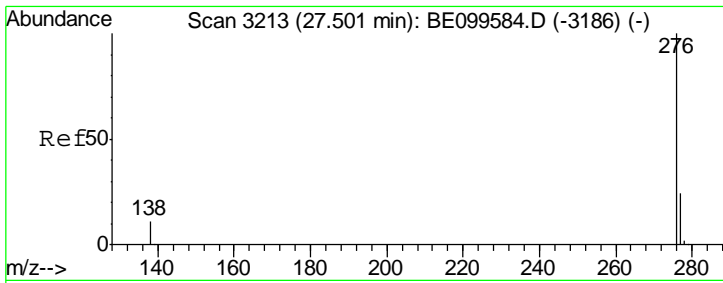
Sohil
 5/13/2019 8:33:18 PM



#38
 Dibenzo(a,h)anthracene
 Concen: 0.415 ng
 RT: 26.70 min Scan# 2991
 Delta R.T. 0.01 min
 Lab File: BE099597.D
 Acq: 10 May 2019 11:01

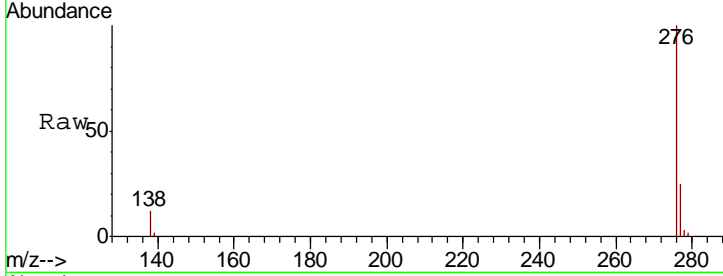
Tgt Ion	Resp	Lower	Upper
278	24020		
139	13.9	8.3	12.5#
279	25.2	19.4	29.2





#39
 Benzo(a,h,i)perylene
 Concen: 0.412 ng
 RT: 27.51 min Scan# 3218
 Delta R.T. 0.01 min
 Lab File: BE099597.D
 Acq: 10 May 2019 11:01

Instrument :
 BNA_E
ClientSampled :
 SSTDCCC0.4



Tot Ion: 276 Resp: 24114

Ion	Ratio	Lower	Upper
276	100		
277	24.6	19.8	29.6
138	11.6	9.4	14.2

Manual Integrations
APPROVED
 Sohil
 5/13/2019 8:33:18 PM

