

Data Path : Z:\SVOASRV\HPCHEM1\BNA E\DATA\BE051619\  
 Data File : BE099630.D  
 Acq On : 16 May 2019 19:41  
 Operator : JU/SJ  
 Sample : K2856-02  
 Misc :  
 ALS Vial : 12 Sample Multiplier: 1

Instrument :  
 BNA\_E  
 ClientSampleId :  
 KY038PS027-190514

Quant Time: May 17 07:21:24 2019  
 Quant Method : Z:\SVOASRV\HPCHEM1\BNA E\METHODS\8270-SIM-BE051419.M  
 Quant Title : ASP BNA STANDARDS FOR 5 POINT CALIBRATION  
 QLast Update : Tue May 14 19:30:50 2019  
 Response via : Initial Calibration

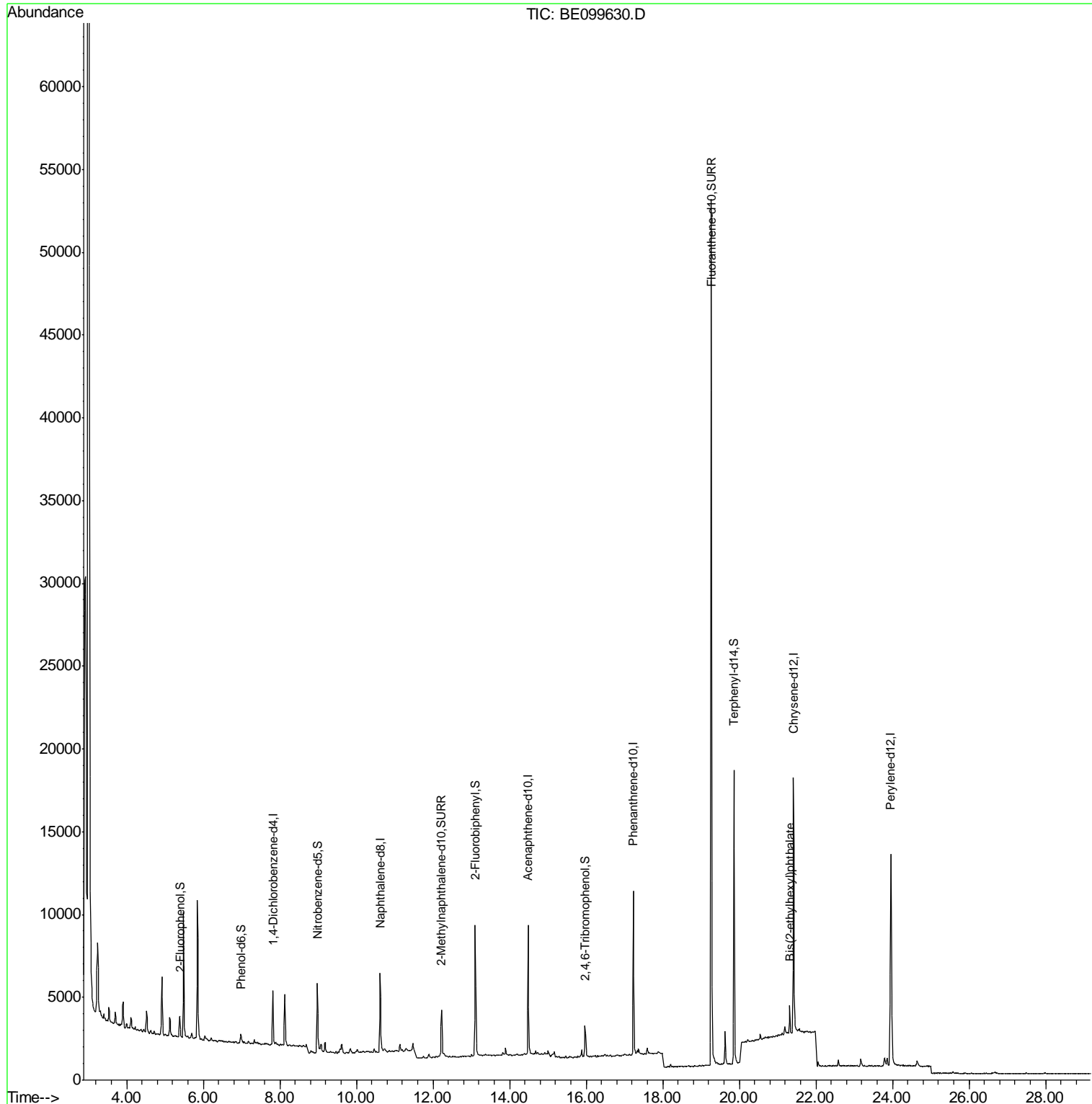
Internal Standards	R.T.	QIon	Response	Conc	Units	Dev(Min)
1) 1,4-Dichlorobenzene-d4	7.82	152	1909	0.40	ng	0.00
7) Naphthalene-d8	10.61	136	6523	0.40	ng	0.00
13) Acenaphthene-d10	14.49	164	4798	0.40	ng	0.00
19) Phenanthrene-d10	17.23	188	14340	0.40	ng	0.00
27) Chrysene-d12	21.41	240	18192	0.40	ng	0.00
34) Perylene-d12	23.96	264	20926	0.40	ng	0.00
System Monitoring Compounds						
4) 2-Fluorophenol	5.39	112	925	0.17	ng	0.01
5) Phenol-d6	6.98	99	701	0.10	ng	0.00
8) Nitrobenzene-d5	8.98	82	2241	0.35	ng	0.00
11) 2-Methylnaphthalene-d10	12.22	152	4265	0.39	ng	0.00
14) 2,4,6-Tribromophenol	15.97	330	1308	0.40	ng	-0.01
15) 2-Fluorobiphenyl	13.10	172	8126	0.44	ng	0.00
25) Fluoranthene-d10	19.26	212	72863	0.38	ng	0.00
29) Terphenyl-d14	19.86	244	17654	0.54	ng	0.00
Target Compounds						Qvalue
32) Bis(2-ethylhexyl)phthalate	21.32	149	1893	0.022	ng	# 92

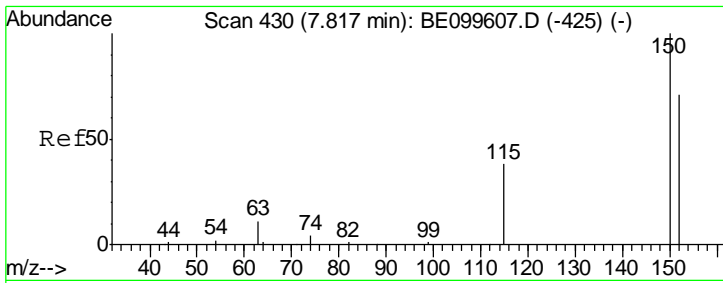
(#) = qualifier out of range (m) = manual integration (+) = signals summed

Data Path : Z:\SVOASRV\HPCHEM1\BNA E\DATA\BE051619\  
 Data File : BE099630.D  
 Acq On : 16 May 2019 19:41  
 Operator : JU/SJ  
 Sample : K2856-02  
 Misc :  
 ALS Vial : 12 Sample Multiplier: 1

Instrument :  
 BNA\_E  
 ClientSampleId :  
 KY038PS027-190514

Quant Time: May 17 07:21:24 2019  
 Quant Method : Z:\SVOASRV\HPCHEM1\BNA E\METHODS\8270-SIM-BE051419.M  
 Quant Title : ASP BNA STANDARDS FOR 5 POINT CALIBRATION  
 QLast Update : Tue May 14 19:30:50 2019  
 Response via : Initial Calibration

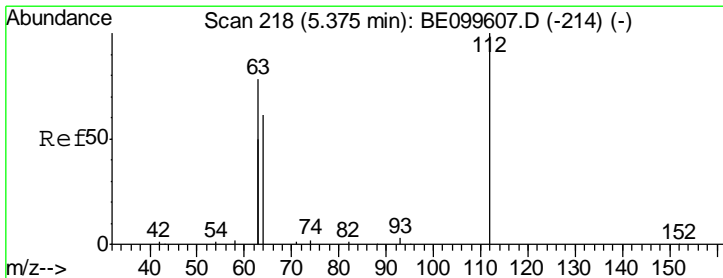
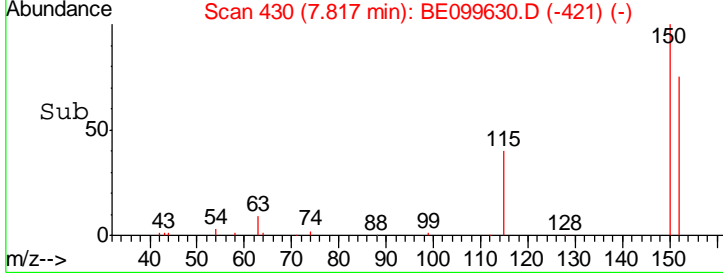
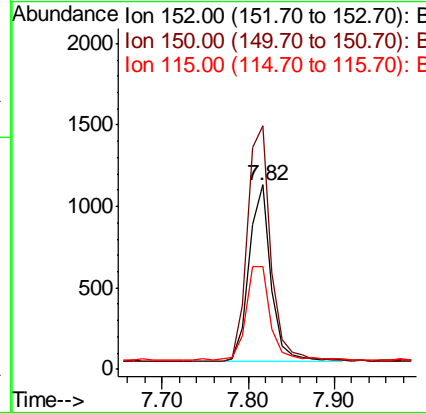
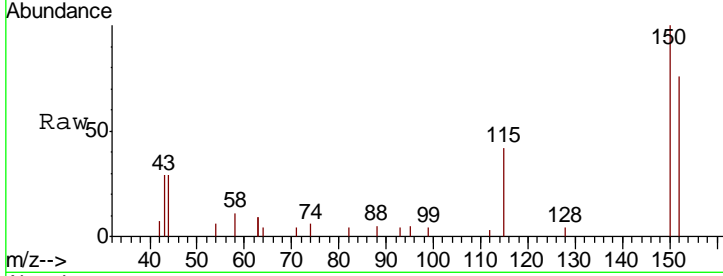




#1  
 1,4-Dichlorobenzene-d4  
 Concen: 0.400 ng  
 RT: 7.82 min Scan# 430  
 Delta R.T. -0.00 min  
 Lab File: BE099630.D  
 Acq: 16 May 2019 19:41

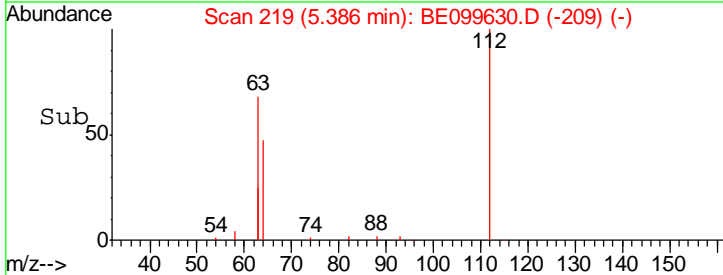
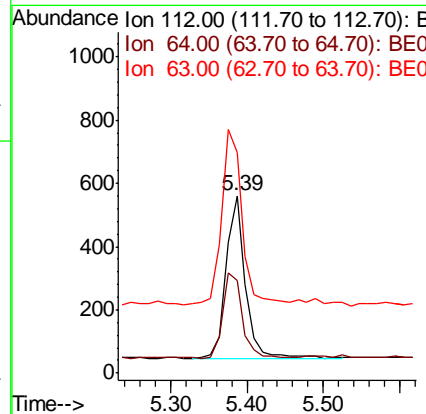
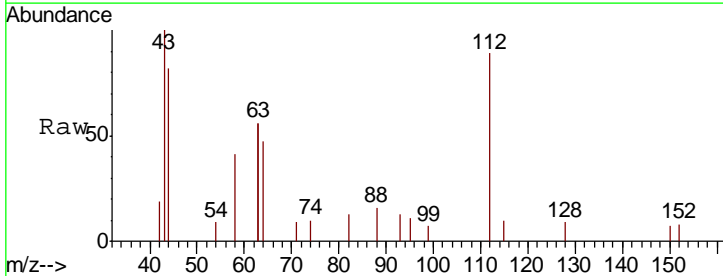
**Instrument :**  
 BNA\_E  
**ClientSampleId :**  
 KY038PS027-190514

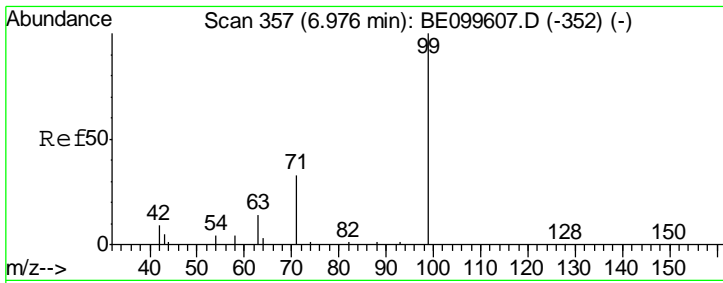
Tgt Ion	Resp	Lower	Upper
152	100		
150	132.1	110.1	165.1
115	55.5	46.2	69.4



#4  
 2-Fluorophenol  
 Concen: 0.171 ng  
 RT: 5.39 min Scan# 219  
 Delta R.T. 0.01 min  
 Lab File: BE099630.D  
 Acq: 16 May 2019 19:41

Tgt Ion	Resp	Lower	Upper
112	100		
64	53.1	43.7	65.5
63	112.3	94.0	141.0

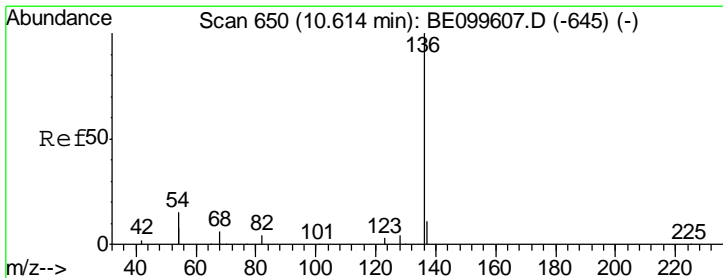
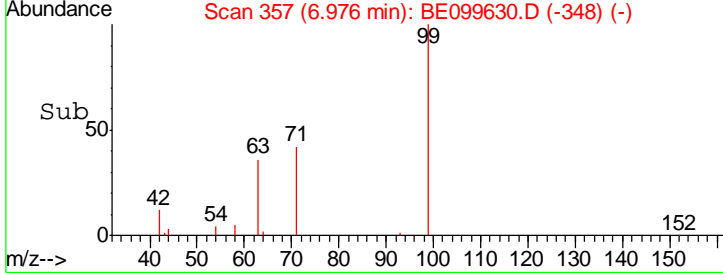
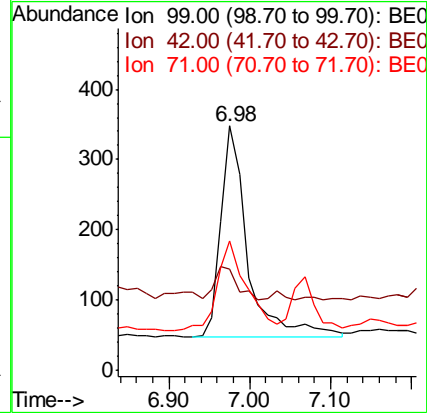
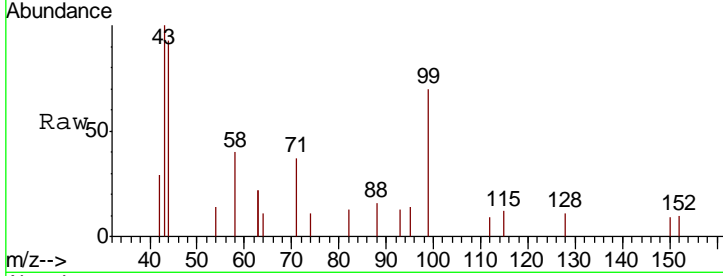




#5  
 Phenol-d6  
 Concen: 0.102 ng  
 RT: 6.98 min Scan# 357  
 Delta R.T. -0.00 min  
 Lab File: BE099630.D  
 Acq: 16 May 2019 19:41

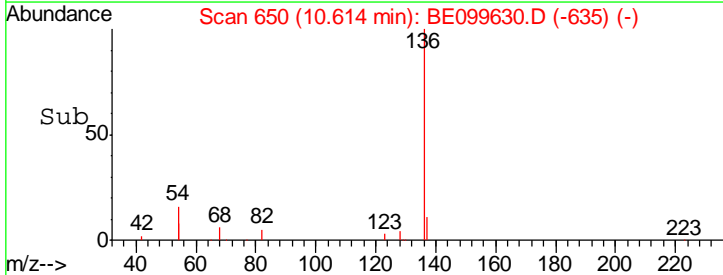
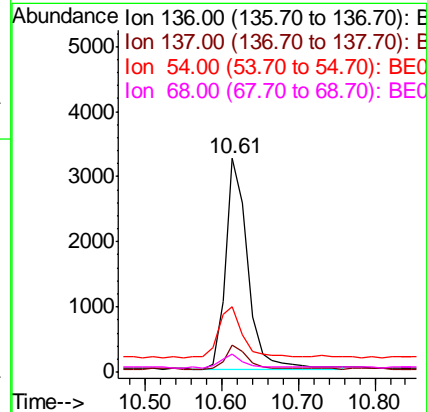
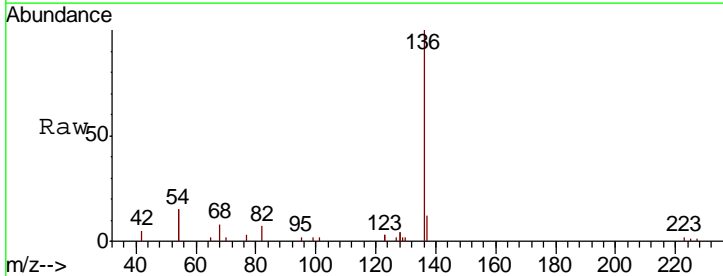
Instrument :  
 BNA\_E  
 ClientSampleId :  
 KY038PS027-190514

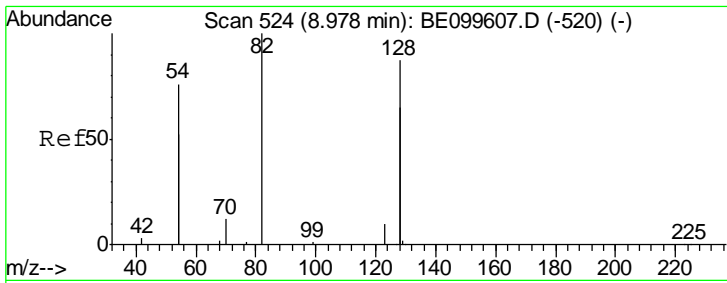
Tgt Ion	Resp	Lower	Upper
99	701		
42	12.7	14.3	21.5#
71	45.8	33.1	49.7



#7  
 Naphthalene-d8  
 Concen: 0.400 ng  
 RT: 10.61 min Scan# 650  
 Delta R.T. -0.00 min  
 Lab File: BE099630.D  
 Acq: 16 May 2019 19:41

Tgt Ion	Resp	Lower	Upper
136	6523		
137	12.3	9.7	14.5
54	30.7	23.8	35.8
68	8.1	6.2	9.2

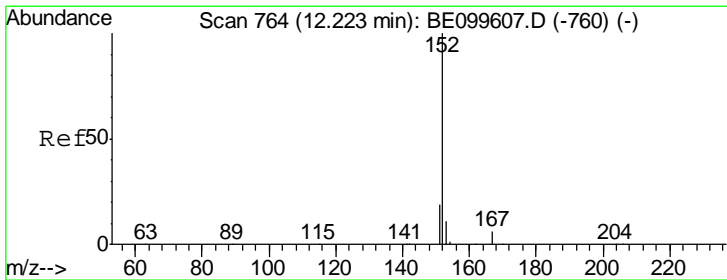
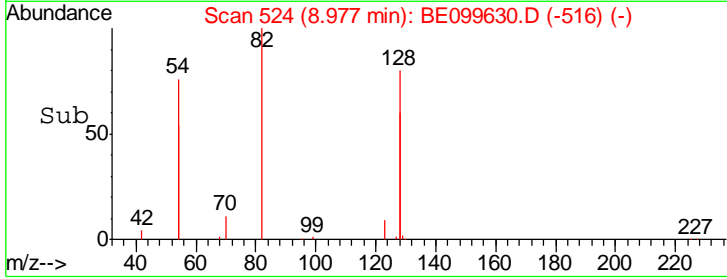
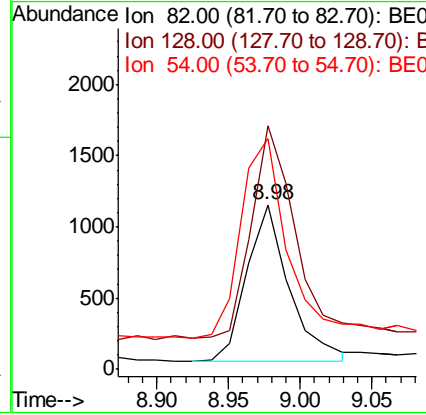
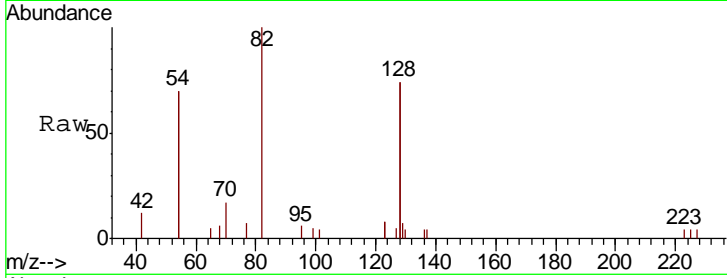




#8  
 Nitrobenzene-d5  
 Concen: 0.355 ng  
 RT: 8.98 min Scan# 524  
 Delta R.T. -0.00 min  
 Lab File: BE099630.D  
 Acq: 16 May 2019 19:41

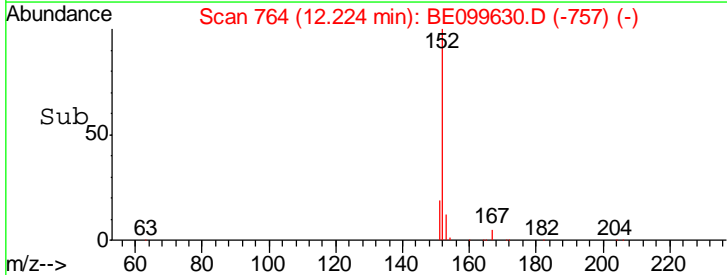
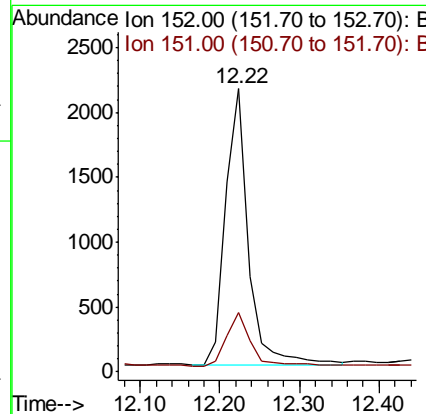
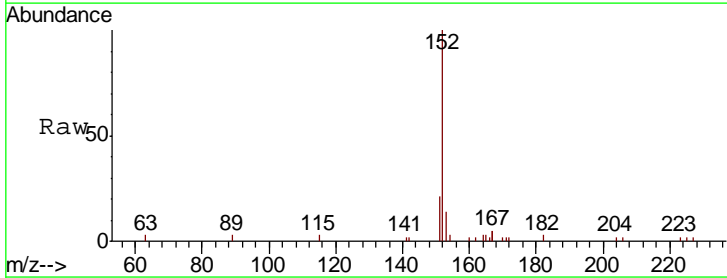
**Instrument :**  
 BNA\_E  
**ClientSampleId :**  
 KY038PS027-190514

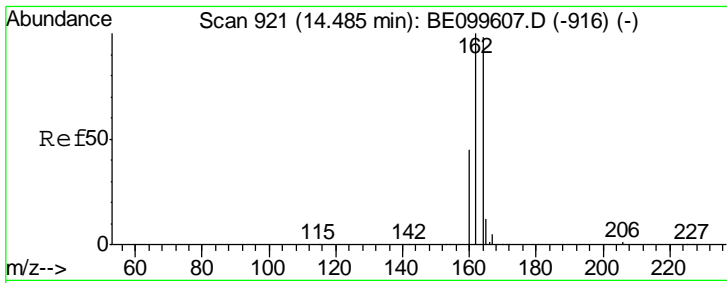
Tgt Ion	Resp	Lower	Upper
82	100		
128	147.8	131.4	197.2
54	140.4	113.9	170.9



#11  
 2-Methylnaphthalene-d10  
 Concen: 0.389 ng  
 RT: 12.22 min Scan# 764  
 Delta R.T. 0.00 min  
 Lab File: BE099630.D  
 Acq: 16 May 2019 19:41

Tgt Ion	Resp	Lower	Upper
152	100		
151	20.6	15.3	22.9

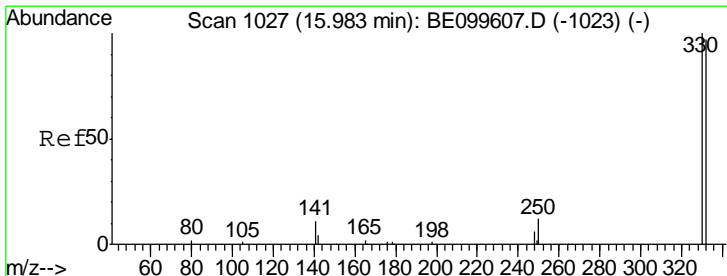
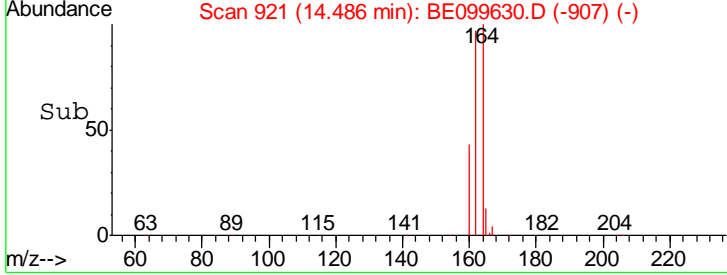
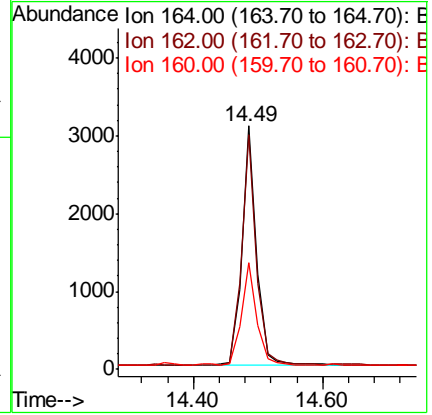
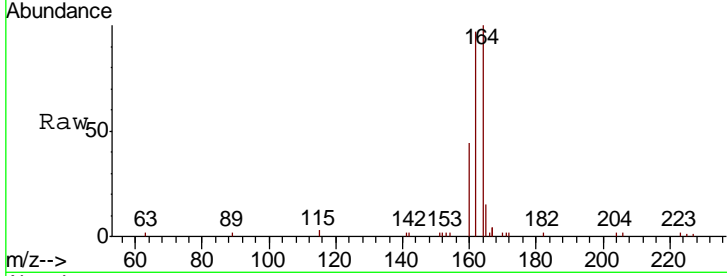




#13  
 Acenaphthene-d10  
 Concen: 0.400 ng  
 RT: 14.49 min Scan# 921  
 Delta R.T. 0.00 min  
 Lab File: BE099630.D  
 Acq: 16 May 2019 19:41

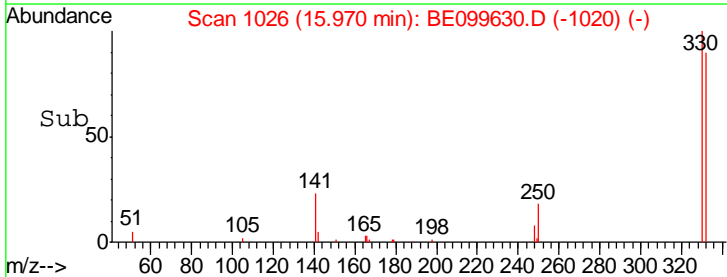
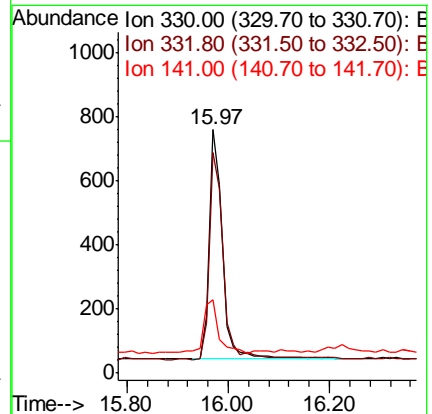
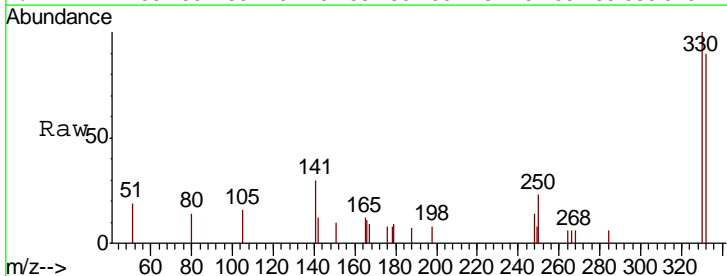
Instrument :  
 BNA\_E  
 ClientSampleId :  
 KY038PS027-190514

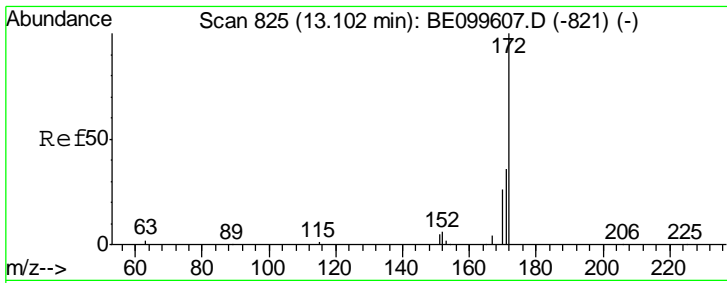
Tgt Ion	Resp	Lower	Upper
164	100		
162	96.6	81.4	122.0
160	43.9	37.4	56.2



#14  
 2,4,6-Tribromophenol  
 Concen: 0.399 ng  
 RT: 15.97 min Scan# 1026  
 Delta R.T. -0.01 min  
 Lab File: BE099630.D  
 Acq: 16 May 2019 19:41

Tgt Ion	Resp	Lower	Upper
330	100		
332	95.6	73.8	110.8
141	25.5	21.0	31.6

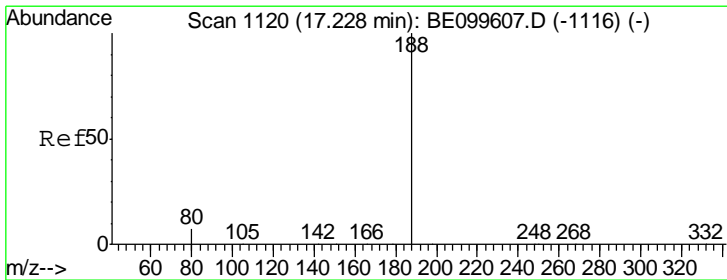
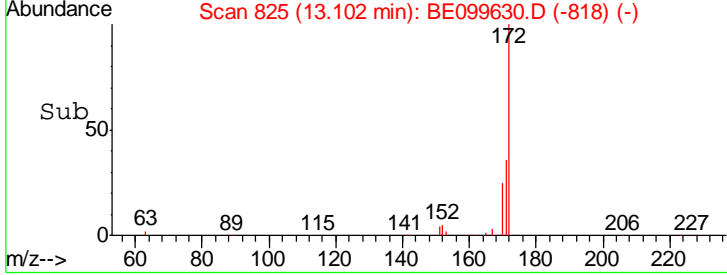
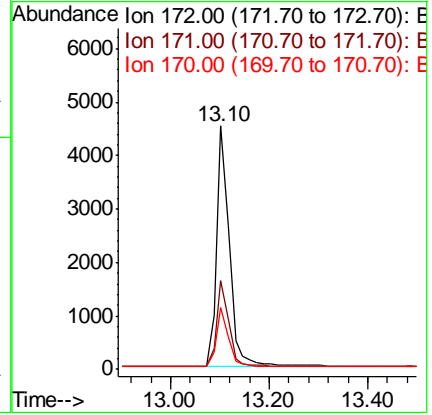
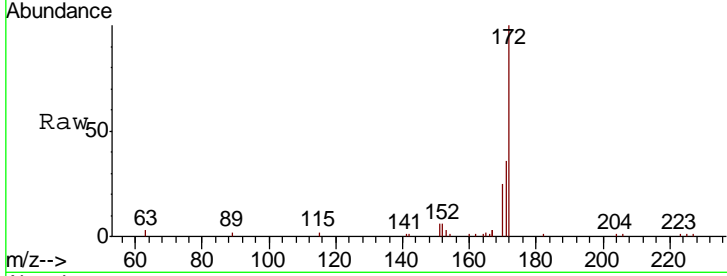




#15  
 2-Fluorobiphenyl  
 Concen: 0.440 ng  
 RT: 13.10 min Scan# 825  
 Delta R.T. 0.00 min  
 Lab File: BE099630.D  
 Acq: 16 May 2019 19:41

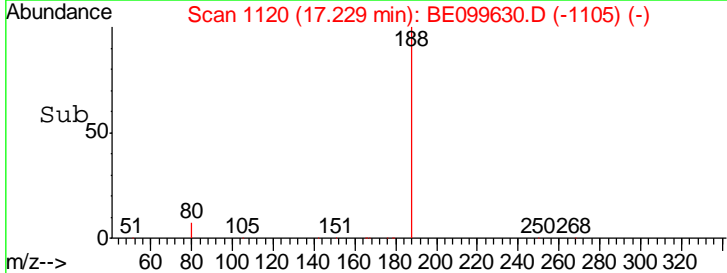
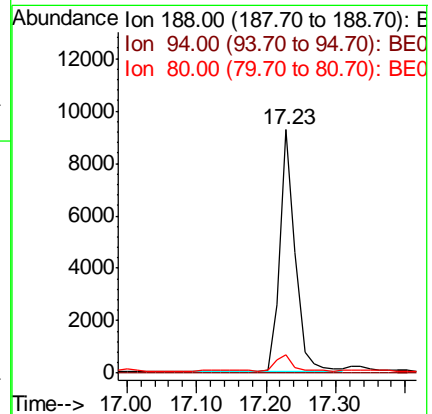
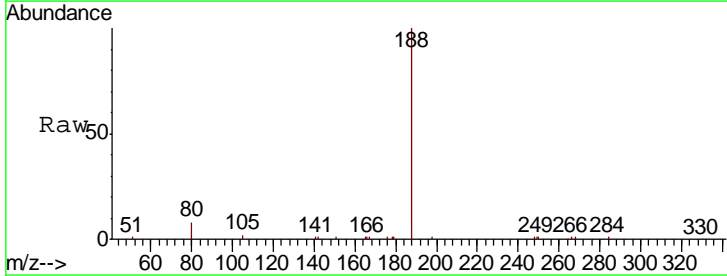
Instrument :  
 BNA\_E  
 ClientSampleId :  
 KY038PS027-190514

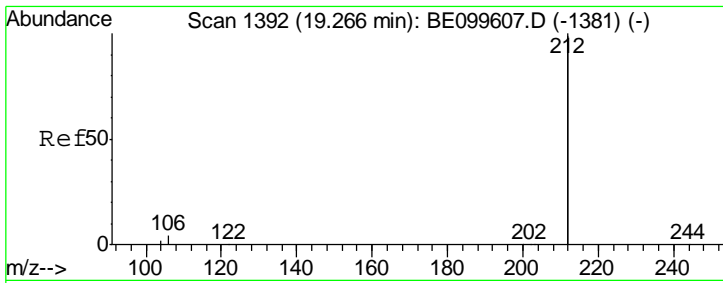
Tgt Ion	Resp	Lower	Upper
172	100		
171	36.2	29.4	44.2
170	25.5	21.5	32.3



#19  
 Phenanthrene-d10  
 Concen: 0.400 ng  
 RT: 17.23 min Scan# 1120  
 Delta R.T. 0.00 min  
 Lab File: BE099630.D  
 Acq: 16 May 2019 19:41

Tgt Ion	Resp	Lower	Upper
188	100		
94	0.0	0.0	0.0
80	7.8	6.4	9.6



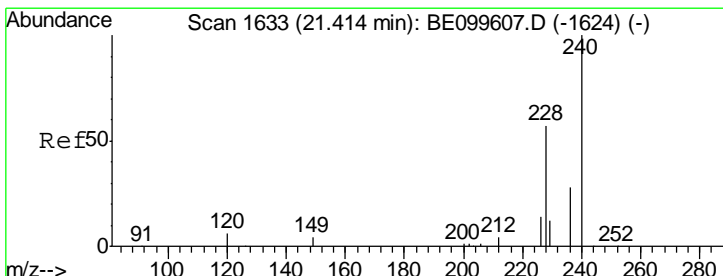
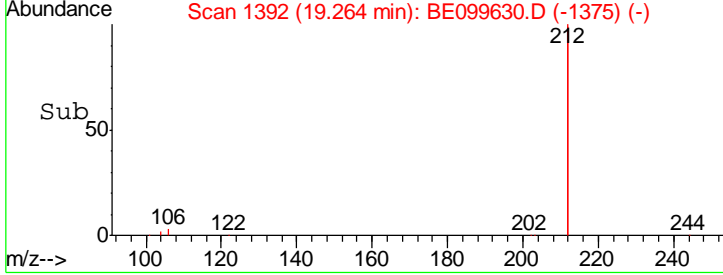
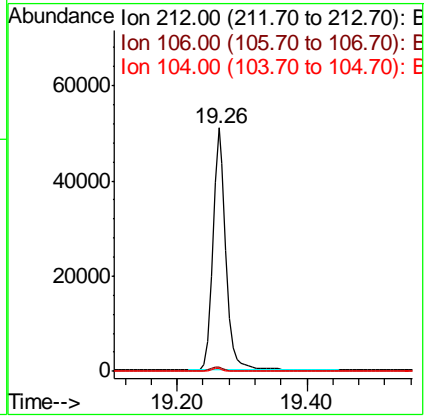
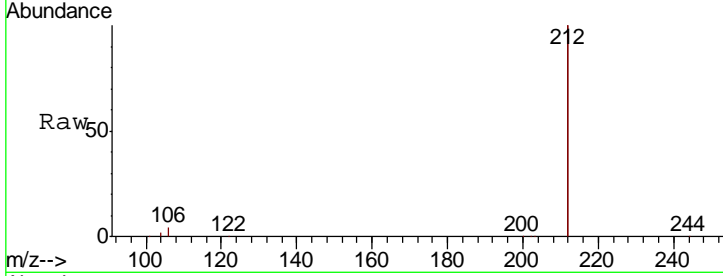


#25  
 Fluoranthene-d10  
 Concen: 0.382 ng  
 RT: 19.26 min Scan# 1392  
 Delta R.T. -0.00 min  
 Lab File: BE099630.D  
 Acq: 16 May 2019 19:41

Instrument :  
 BNA\_E  
 ClientSampleId :  
 KY038PS027-190514

Tgt Ion: 212 Resp: 72863

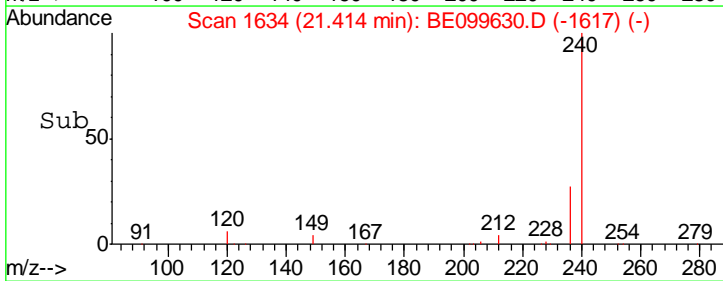
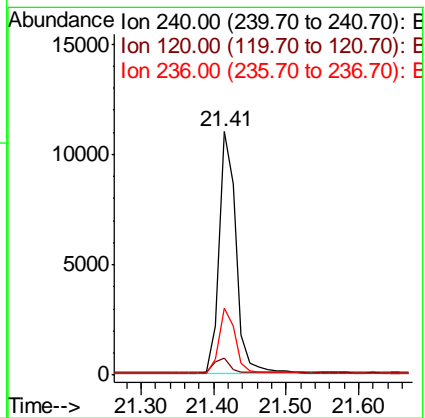
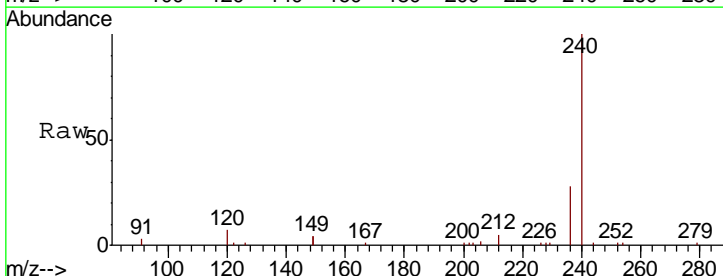
Ion	Ratio	Lower	Upper
212	100		
106	1.9	1.4	2.2
104	1.0	0.9	1.3



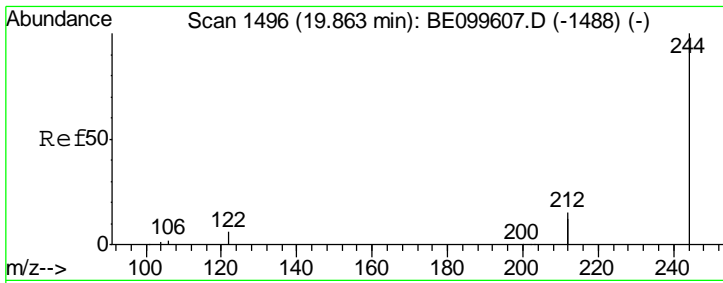
#27  
 Chrysene-d12  
 Concen: 0.400 ng  
 RT: 21.41 min Scan# 1634  
 Delta R.T. 0.00 min  
 Lab File: BE099630.D  
 Acq: 16 May 2019 19:41

Tgt Ion: 240 Resp: 18192

Ion	Ratio	Lower	Upper
240	100		
120	7.2	5.7	8.5
236	27.7	22.8	34.2



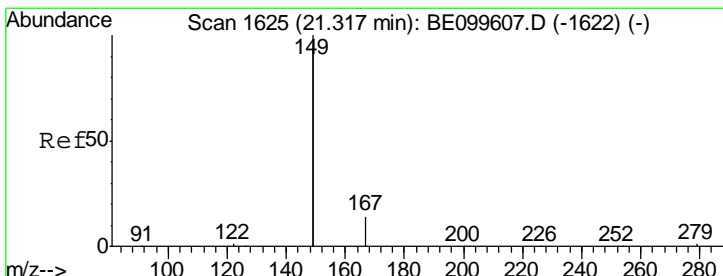
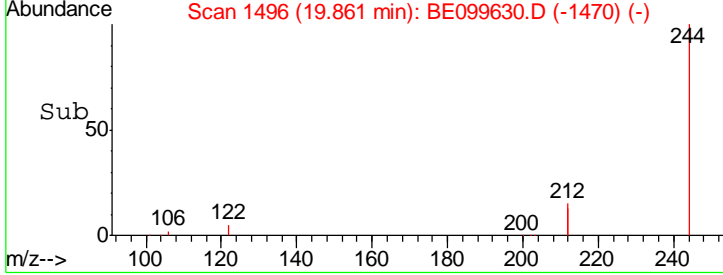
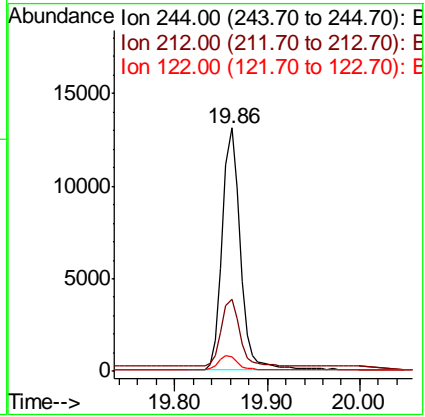
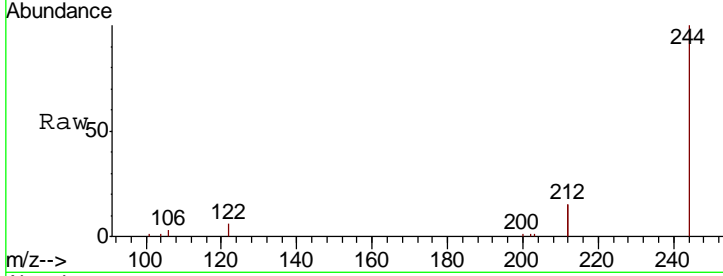




#29  
 Terphenyl-d14  
 Concen: 0.539 ng  
 RT: 19.86 min Scan# 1496  
 Delta R.T. -0.00 min  
 Lab File: BE099630.D  
 Acq: 16 May 2019 19:41

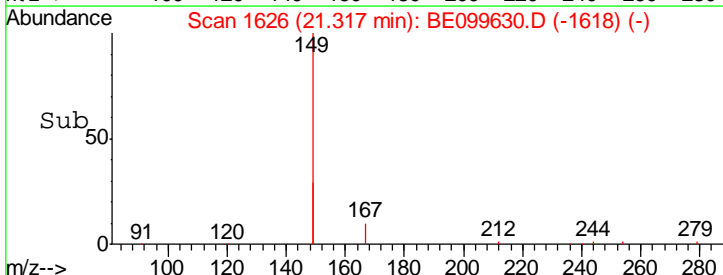
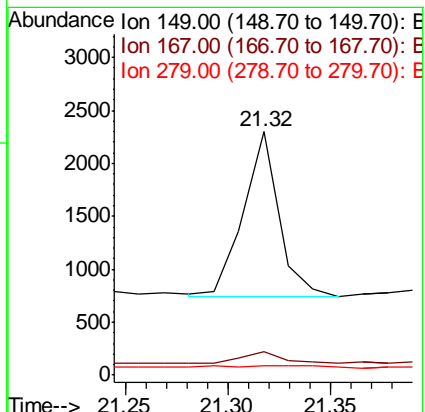
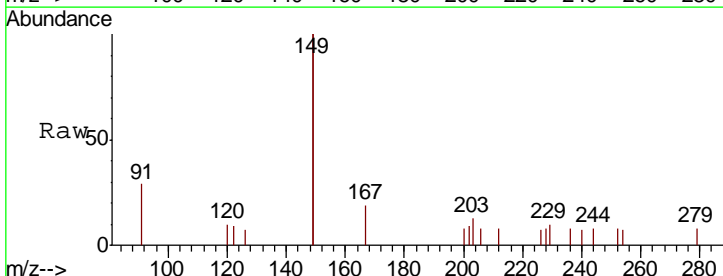
Instrument : BNA\_E  
 ClientSampleId : KY038PS027-190514

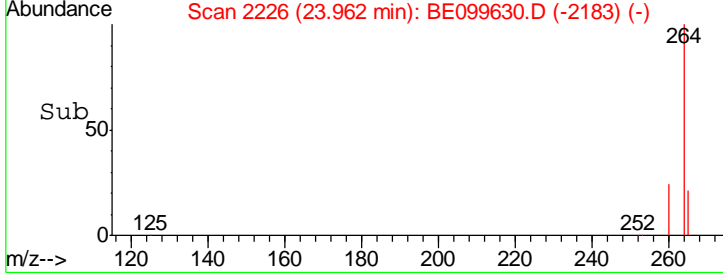
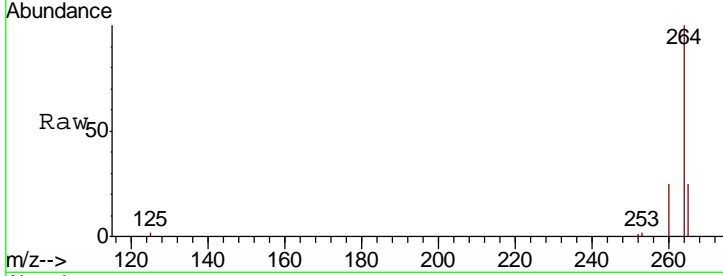
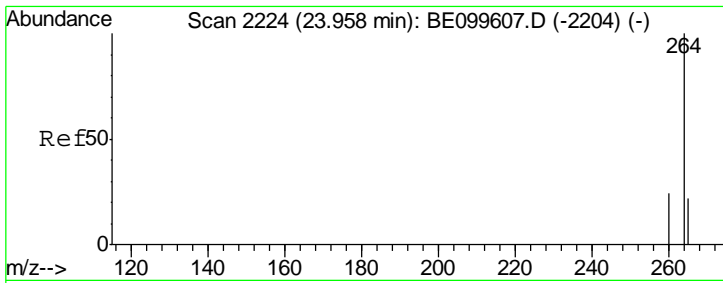
Tgt Ion	Resp	Lower	Upper
244	17654		
212	29.4	23.8	35.6
122	6.1	5.0	7.6



#32  
 Bis(2-ethylhexyl)phthalate  
 Concen: 0.022 ng  
 RT: 21.32 min Scan# 1626  
 Delta R.T. 0.00 min  
 Lab File: BE099630.D  
 Acq: 16 May 2019 19:41

Tgt Ion	Resp	Lower	Upper
149	1893		
167	10.2	6.0	9.0#
279	4.2	1.1	1.7#





#34  
 Perylene-d12  
 Concen: 0.400 ng  
 RT: 23.96 min Scan# 2226  
 Delta R.T. 0.00 min  
 Lab File: BE099630.D  
 Acq: 16 May 2019 19:41

**Instrument :**  
 BNA\_E  
**ClientSampled :**  
 KY038PS027-190514

Tot Ion: 264 Resp: 20926

Ion	Ratio	Lower	Upper
264	100		
260	24.8	19.7	29.5
265	25.0	21.2	31.8

