

Data Path : Z:\SVOASRV\HPCHEM1\BNA_E\DATA\BE060619\
 Data File : BE099830.D
 Acq On : 6 Jun 2019 20:11
 Operator : JU/SJ
 Sample : K3190-10
 Misc :
 ALS Vial : 6 Sample Multiplier: 1

Instrument :
 BNA_E
 ClientSampleId :
 BP-DUP01-20190603

Quant Time: Jun 07 02:07:31 2019
 Quant Method : Z:\SVOASRV\HPCHEM1\BNA_E\METHODS\8270-SIM-BE060519.M
 Quant Title : ASP BNA STANDARDS FOR 5 POINT CALIBRATION
 QLast Update : Wed Jun 05 14:35:58 2019
 Response via : Initial Calibration

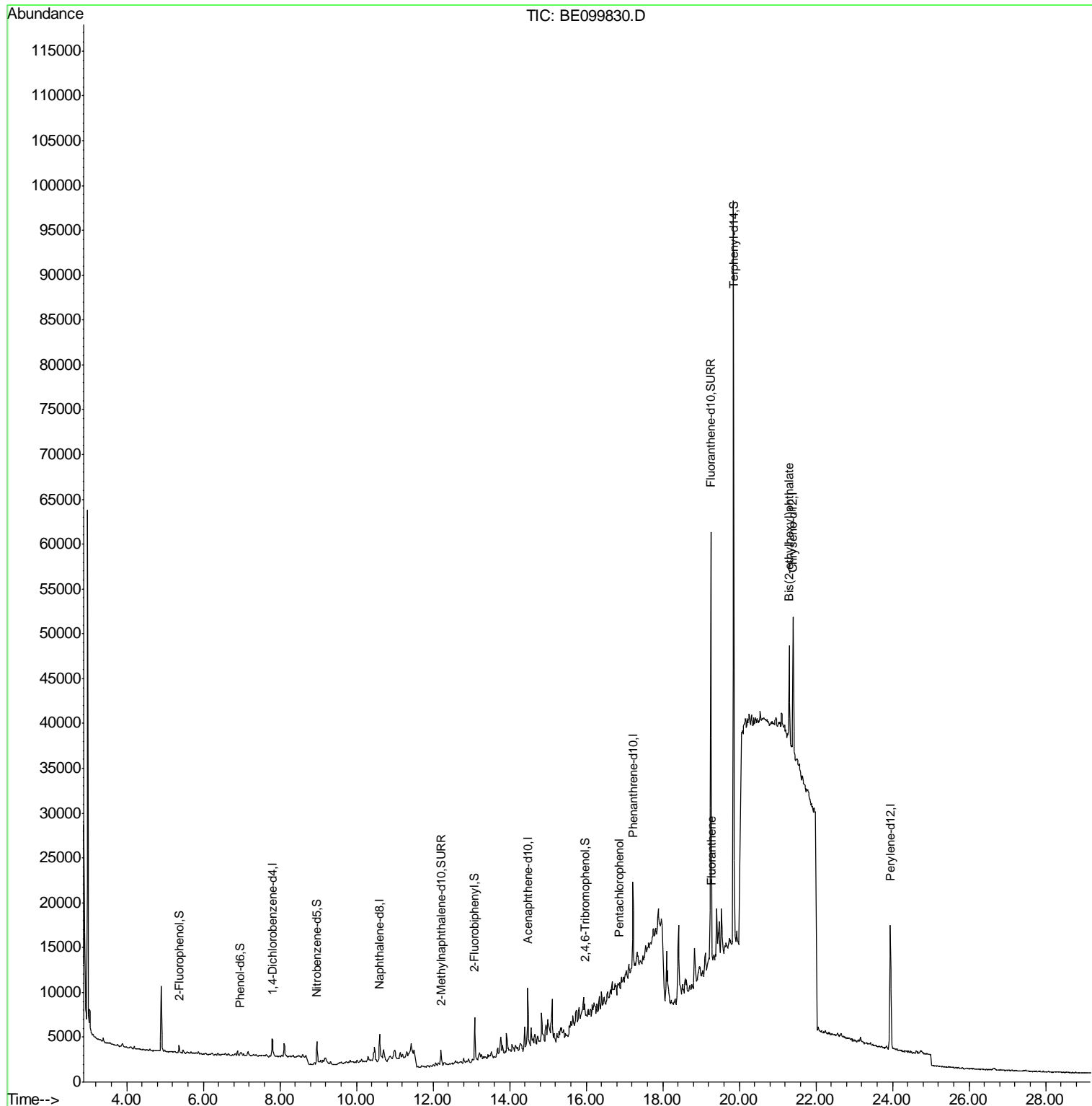
Internal Standards	R.T.	QIon	Response	Conc	Units	Dev(Min)	
1) 1,4-Dichlorobenzene-d4	7.80	152	1110	0.40	ng	0.00	
7) Naphthalene-d8	10.60	136	4012	0.40	ng	-0.01	
13) Acenaphthene-d10	14.47	164	5239	0.40	ng	0.00	
19) Phenanthrene-d10	17.22	188	12825	0.40	ng	-0.01	
27) Chrysene-d12	21.40	240	18045	0.40	ng	-0.01	
34) Perylene-d12	23.94	264	20995	0.40	ng	0.00	
System Monitoring Compounds							
4) 2-Fluorophenol	5.36	112	513	0.19	ng	0.00	
5) Phenol-d6	6.96	99	374	0.11	ng	0.00	
8) Nitrobenzene-d5	8.96	82	1221	0.35	ng	0.00	
11) 2-Methylnaphthalene-d10	12.21	152	2212	0.32	ng	0.00	
14) 2,4,6-Tribromophenol	15.97	330	1231	0.44	ng	-0.01	
15) 2-Fluorobiphenyl	13.09	172	4944	0.25	ng	-0.02	
25) Fluoranthene-d10	19.25	212	64175	0.34	ng	0.00	
29) Terphenyl-d14	19.85	244	76985	2.60	ng	0.00	
Target Compounds							
22) Pentachlorophenol	16.87	266	124	0.328	ng		Qvalue 92
26) Fluoranthene	19.28	202	1516	0.028	ng	#	90
32) Bis(2-ethylhexyl)phthalate	21.30	149	14168	0.248	ng	#	100

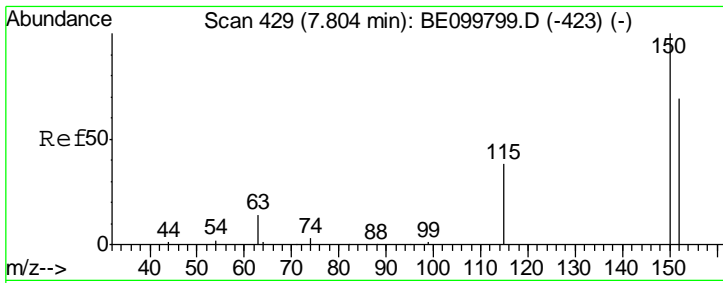
(#) = qualifier out of range (m) = manual integration (+) = signals summed

Data Path : Z:\SVOASRV\HPCHEM1\BNA_E\DATA\BE060619\
 Data File : BE099830.D
 Acq On : 6 Jun 2019 20:11
 Operator : JU/SJ
 Sample : K3190-10
 Misc :
 ALS Vial : 6 Sample Multiplier: 1

Instrument :
 BNA_E
 ClientSampleId :
 BP-DUP01-20190603

Quant Time: Jun 07 02:07:31 2019
 Quant Method : Z:\SVOASRV\HPCHEM1\BNA_E\METHODS\8270-SIM-BE060519.M
 Quant Title : ASP BNA STANDARDS FOR 5 POINT CALIBRATION
 QLast Update : Wed Jun 05 14:35:58 2019
 Response via : Initial Calibration

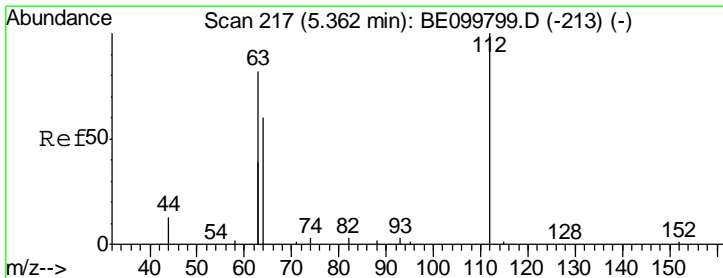
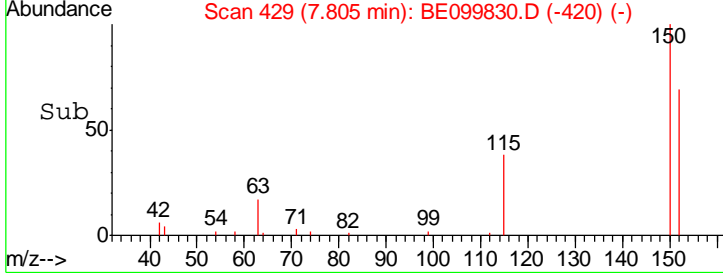
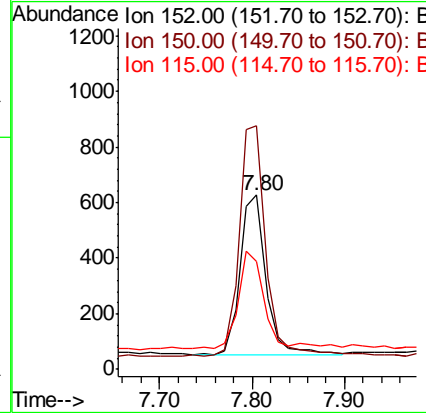
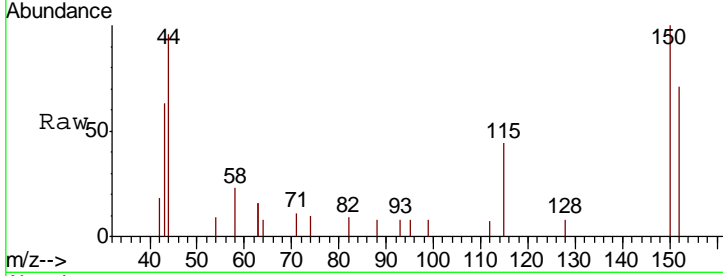




#1
 1,4-Dichlorobenzene-d4
 Concen: 0.400 ng
 RT: 7.80 min Scan# 429
 Delta R.T. 0.00 min
 Lab File: BE099830.D
 Acq: 6 Jun 2019 20:11

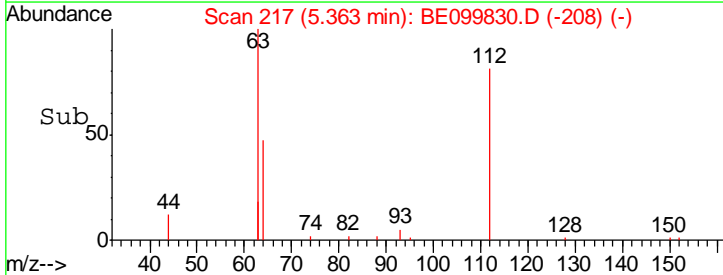
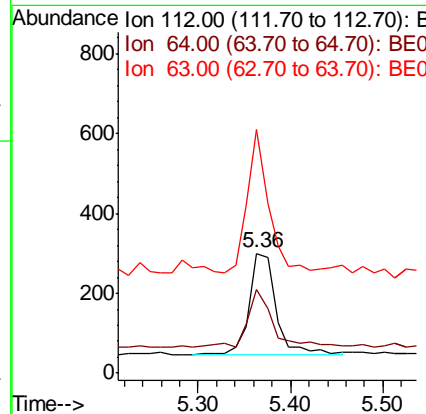
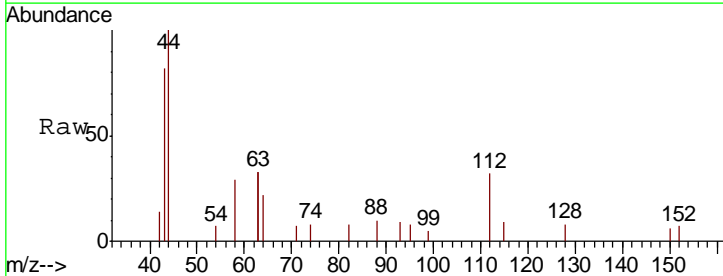
Instrument :
 BNA_E
 ClientSampleId :
 BP-DUP01-20190603

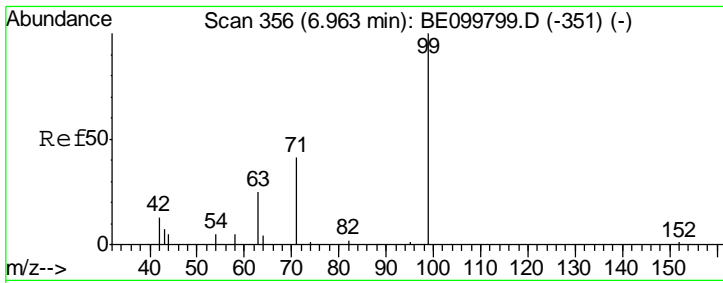
Tgt Ion	Resp	Lower	Upper
152	100		
150	139.9	112.8	169.2
115	62.1	47.6	71.4



#4
 2-Fluorophenol
 Concen: 0.190 ng
 RT: 5.36 min Scan# 217
 Delta R.T. 0.00 min
 Lab File: BE099830.D
 Acq: 6 Jun 2019 20:11

Tgt Ion	Resp	Lower	Upper
112	100		
64	57.1	47.2	70.8
63	111.5	90.7	136.1

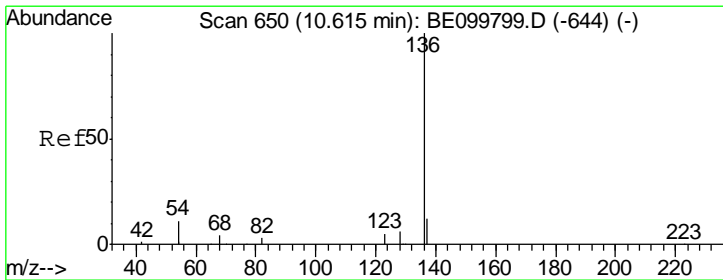
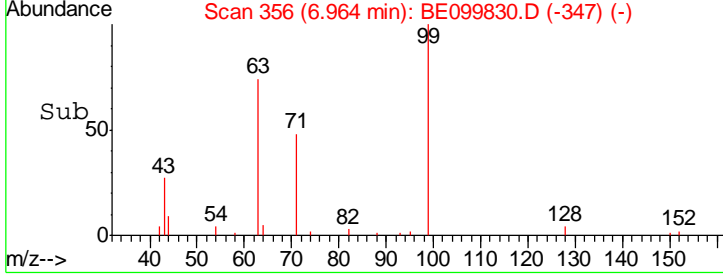
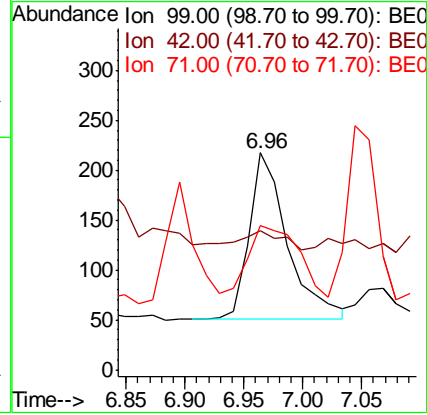
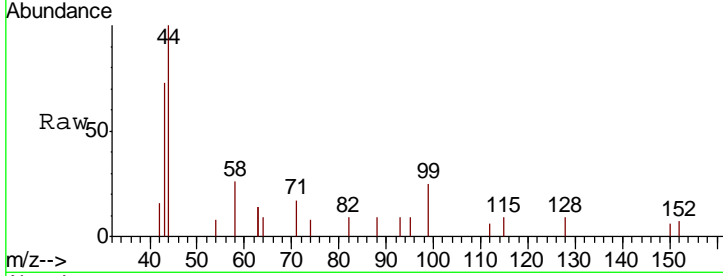




#5
 Phenol-d6
 Concen: 0.108 ng
 RT: 6.96 min Scan# 356
 Delta R.T. 0.00 min
 Lab File: BE099830.D
 Acq: 6 Jun 2019 20:11

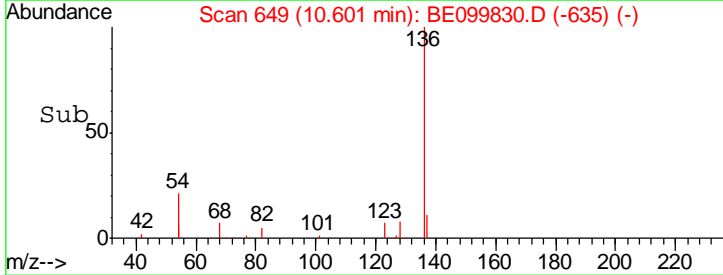
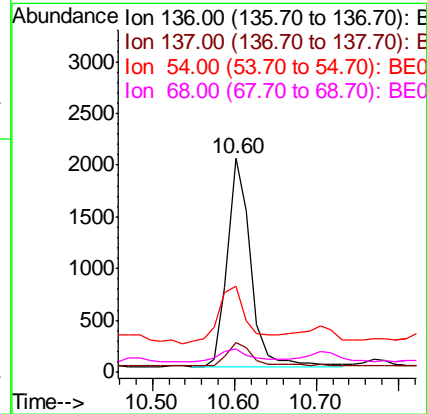
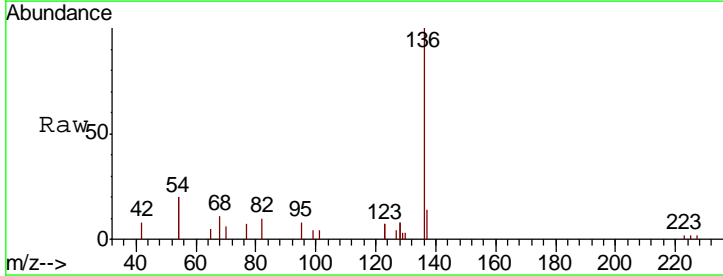
Instrument :
 BNA_E
 ClientSampleId :
 BP-DUP01-20190603

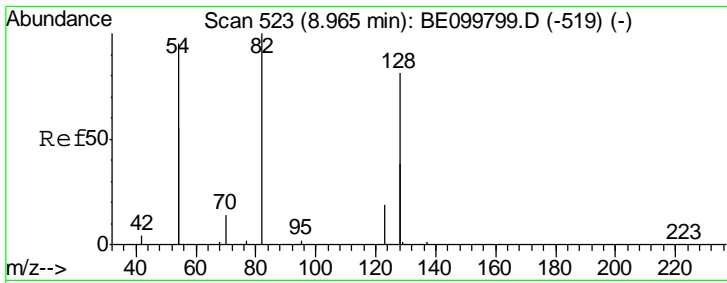
Tgt Ion	Resp	Lower	Upper
99	100		
42	13.1	11.0	16.4
71	57.2	26.1	39.1#



#7
 Naphthalene-d8
 Concen: 0.400 ng
 RT: 10.60 min Scan# 649
 Delta R.T. -0.01 min
 Lab File: BE099830.D
 Acq: 6 Jun 2019 20:11

Tgt Ion	Resp	Lower	Upper
136	100		
137	13.7	11.1	16.7
54	40.2	17.9	26.9#
68	11.0	5.4	8.0#

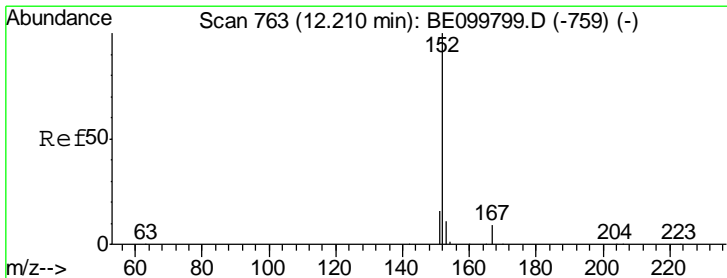
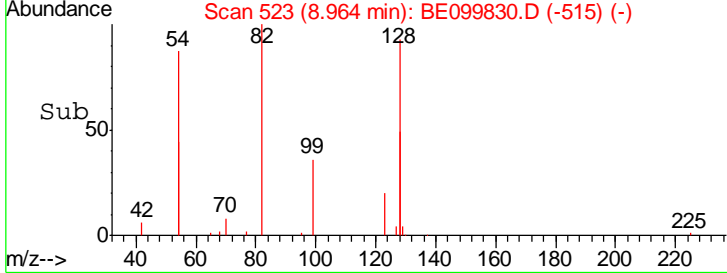
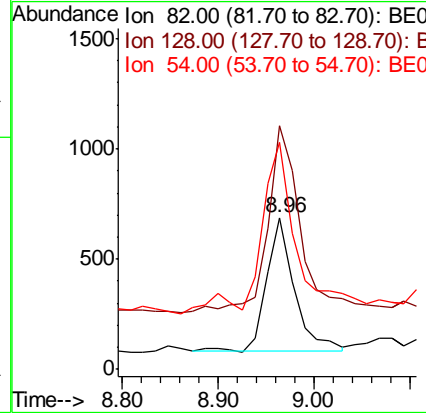
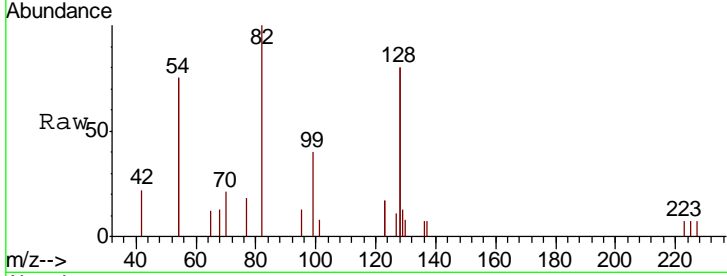




#8
 Nitrobenzene-d5
 Concen: 0.346 ng
 RT: 8.96 min Scan# 523
 Delta R.T. -0.00 min
 Lab File: BE099830.D
 Acq: 6 Jun 2019 20:11

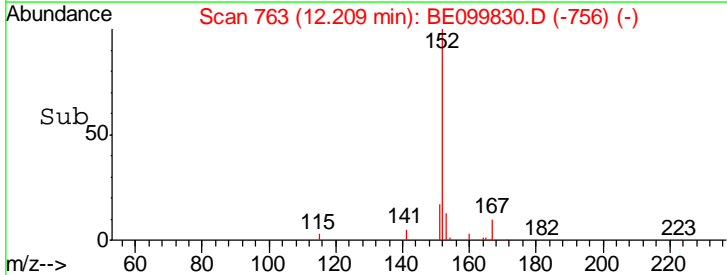
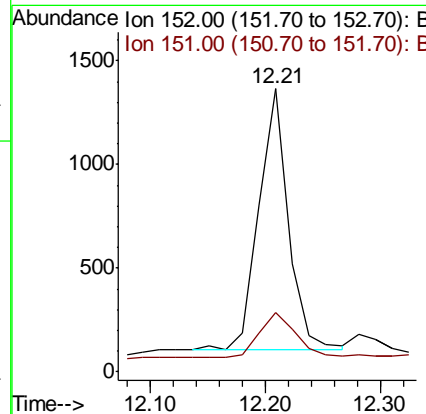
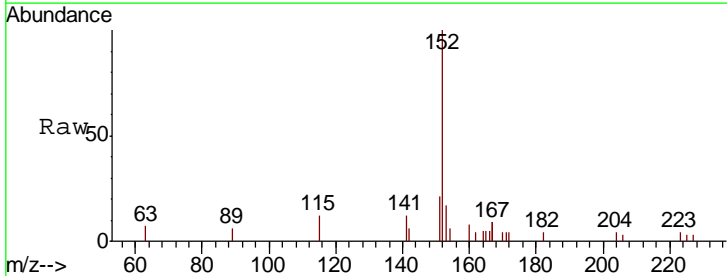
Instrument :
 BNA_E
 ClientSampleId :
 BP-DUP01-20190603

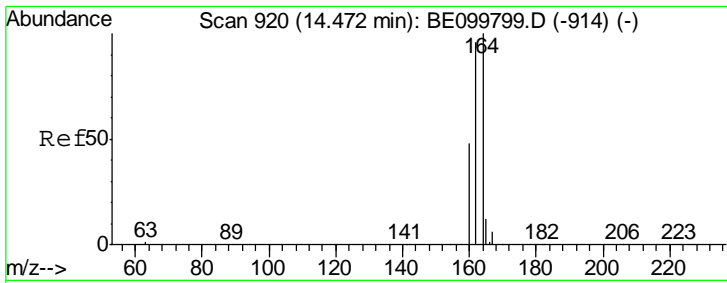
Tgt Ion	Resp	Lower	Upper
82	100		
128	160.7	116.6	175.0
54	149.6	136.2	204.4



#11
 2-Methylnaphthalene-d10
 Concen: 0.321 ng
 RT: 12.21 min Scan# 763
 Delta R.T. -0.00 min
 Lab File: BE099830.D
 Acq: 6 Jun 2019 20:11

Tgt Ion	Resp	Lower	Upper
152	100		
151	22.9	15.8	23.8

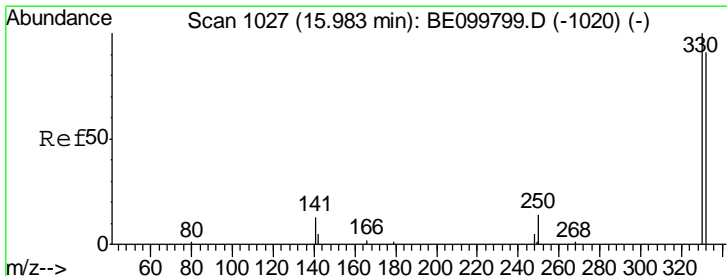
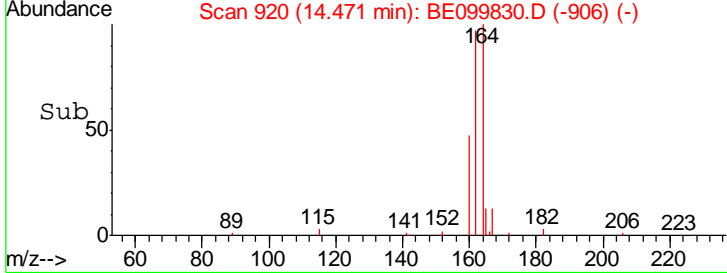
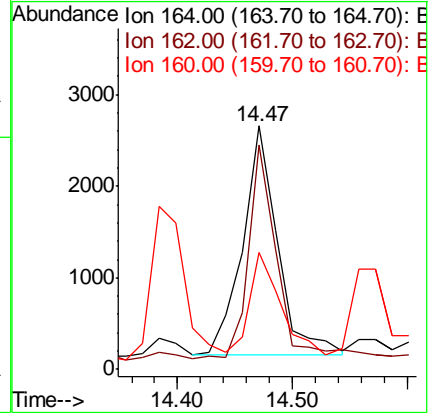
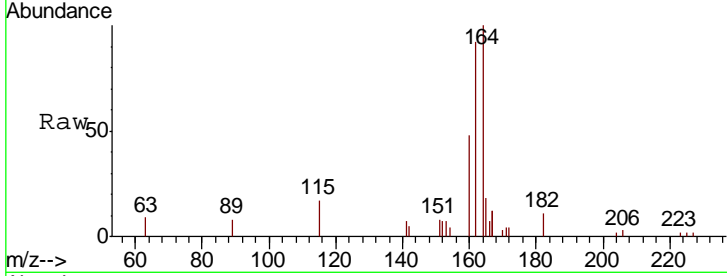




#13
 Acenaphthene-d10
 Concen: 0.400 ng
 RT: 14.47 min Scan# 920
 Delta R.T. -0.00 min
 Lab File: BE099830.D
 Acq: 6 Jun 2019 20:11

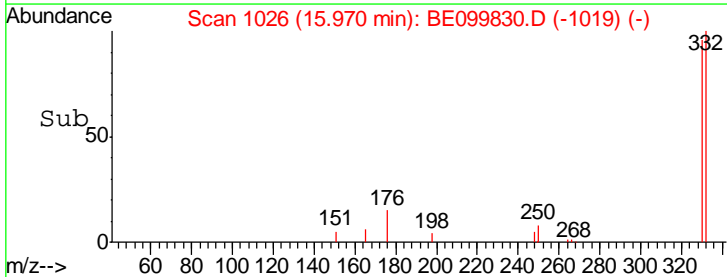
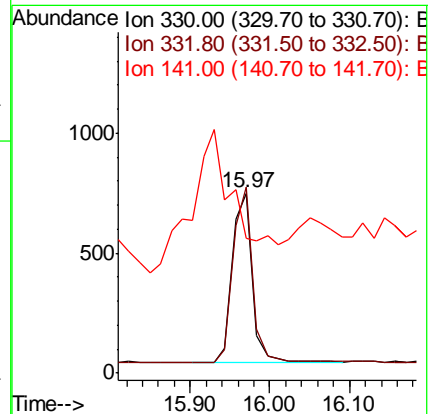
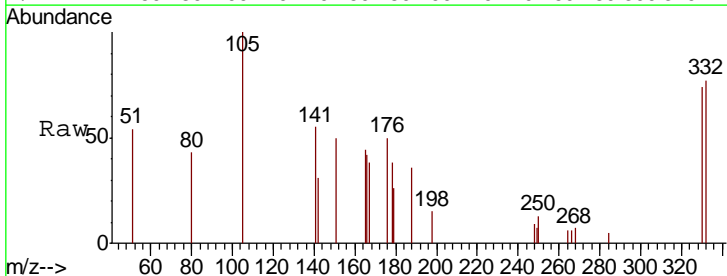
Instrument :
 BNA_E
 ClientSampleId :
 BP-DUP01-20190603

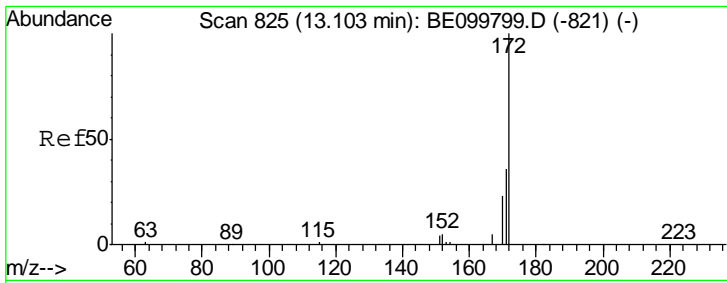
Tgt Ion	Resp	Lower	Upper
164	100		
162	92.4	77.2	115.8
160	47.9	39.4	59.2



#14
 2,4,6-Tribromophenol
 Concen: 0.441 ng
 RT: 15.97 min Scan# 1026
 Delta R.T. -0.01 min
 Lab File: BE099830.D
 Acq: 6 Jun 2019 20:11

Tgt Ion	Resp	Lower	Upper
330	100		
332	102.2	74.9	112.3
141	0.0	16.0	24.0#

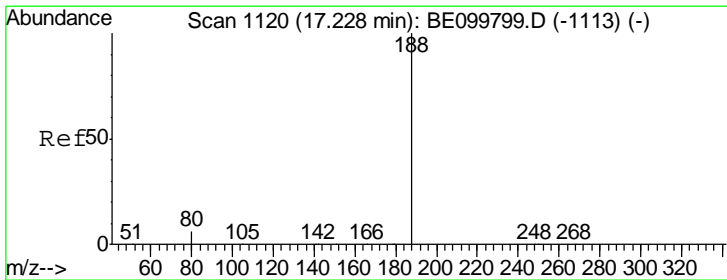
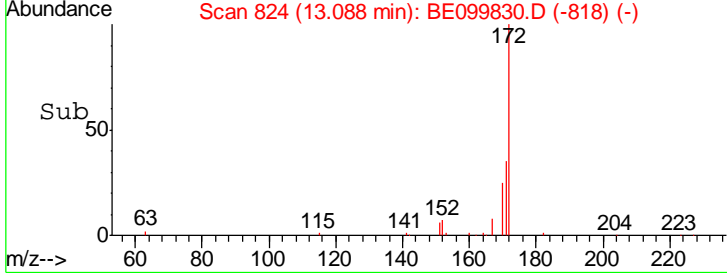
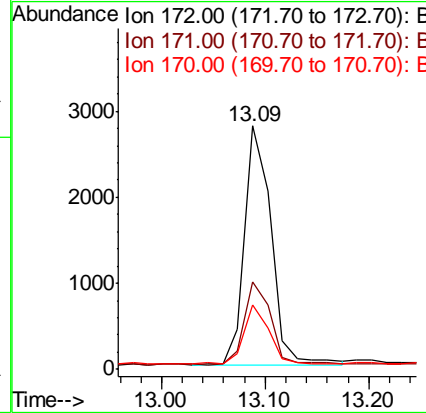
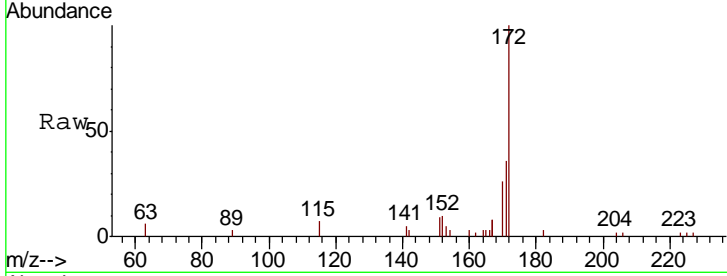




#15
 2-Fluorobiphenyl
 Concen: 0.254 ng
 RT: 13.09 min Scan# 824
 Delta R.T. -0.02 min
 Lab File: BE099830.D
 Acq: 6 Jun 2019 20:11

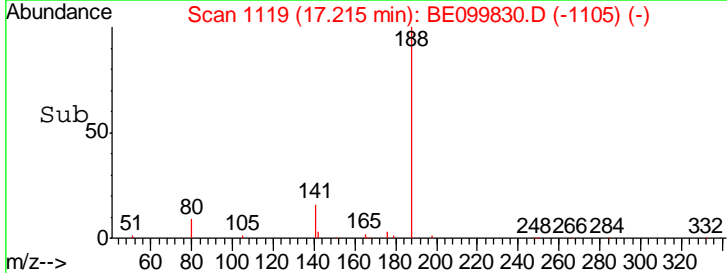
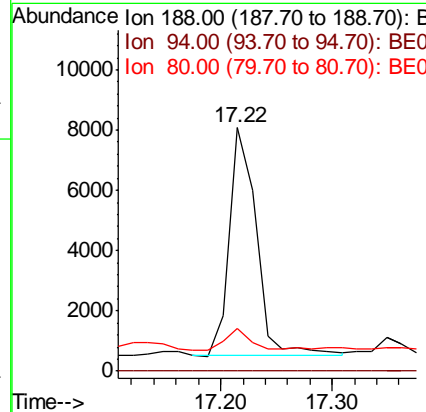
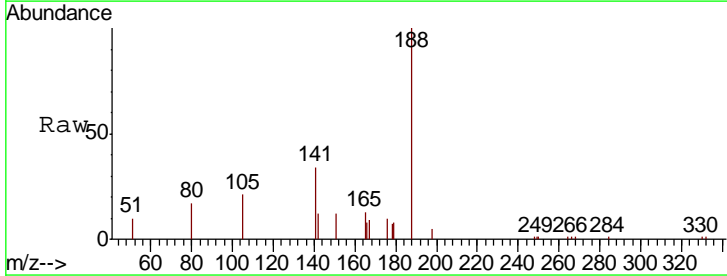
Instrument :
 BNA_E
 ClientSampleId :
 BP-DUP01-20190603

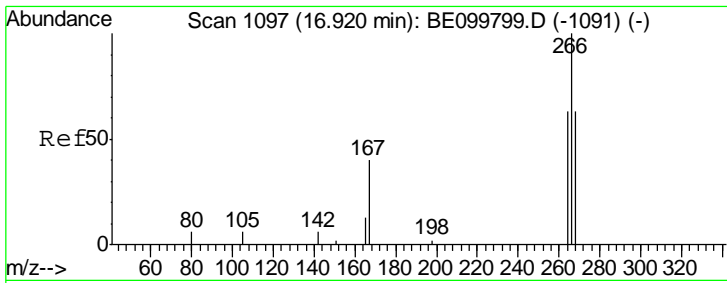
Tgt Ion	Resp	Lower	Upper
172	100		
171	35.9	30.2	45.4
170	26.3	20.1	30.1



#19
 Phenanthrene-d10
 Concen: 0.400 ng
 RT: 17.22 min Scan# 1119
 Delta R.T. -0.01 min
 Lab File: BE099830.D
 Acq: 6 Jun 2019 20:11

Tgt Ion	Resp	Lower	Upper
188	100		
94	0.0	0.0	0.0
80	17.3	5.2	7.8#

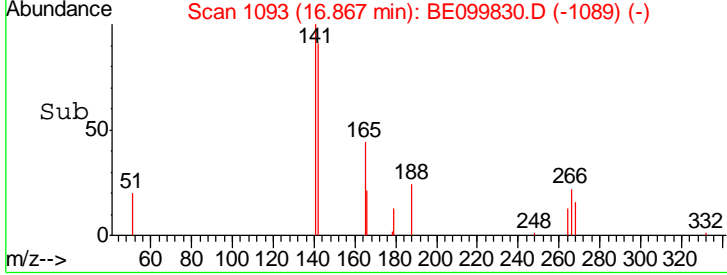
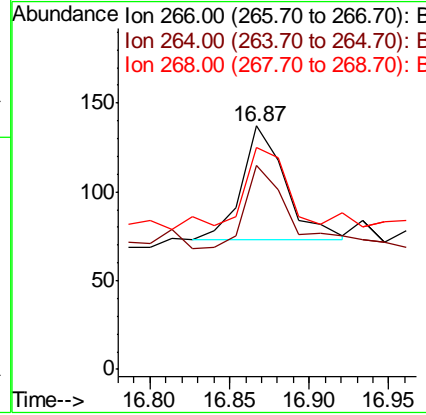
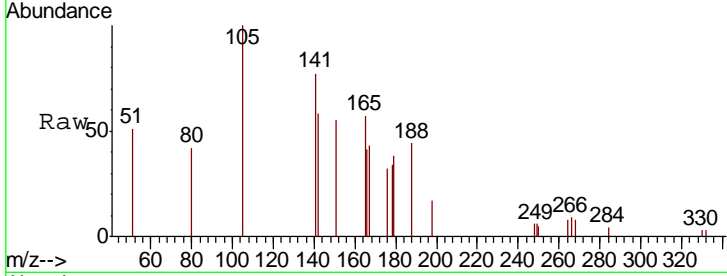




#22
 Pentachlorophenol
 Concen: 0.328 ng
 RT: 16.87 min Scan# 1093
 Delta R.T. -0.05 min
 Lab File: BE099830.D
 Acq: 6 Jun 2019 20:11

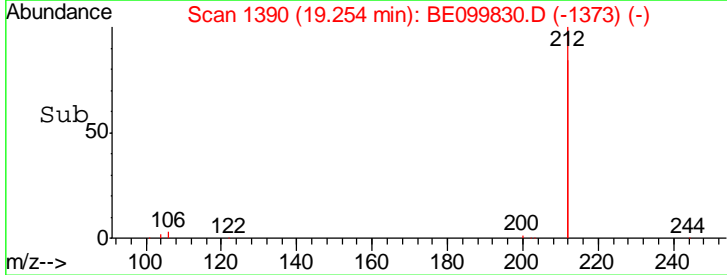
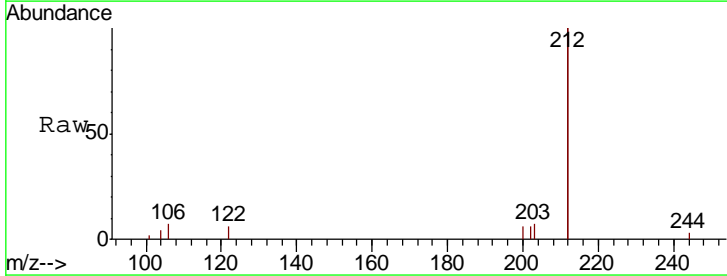
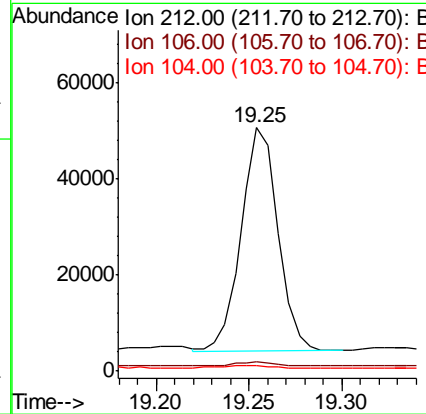
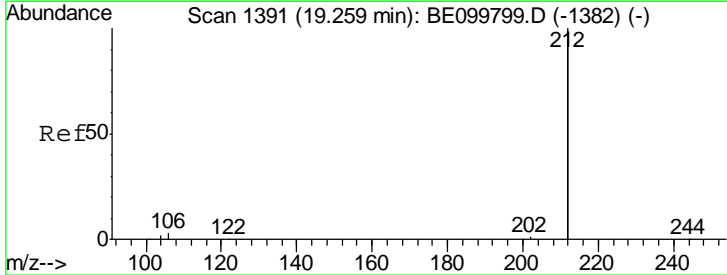
Instrument :
 BNA_E
 ClientSampleId :
 BP-DUP01-20190603

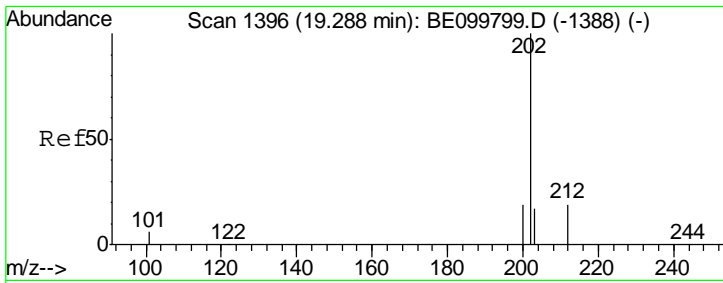
Tgt Ion	Resp	Lower	Upper
266	100		
264	83.9	64.9	97.3
268	91.2	64.0	96.0



#25
 Fluoranthene-d10
 Concen: 0.337 ng
 RT: 19.25 min Scan# 1390
 Delta R.T. -0.01 min
 Lab File: BE099830.D
 Acq: 6 Jun 2019 20:11

Tgt Ion	Resp	Lower	Upper
212	100		
106	2.1	1.4	2.0#
104	1.3	0.8	1.2#

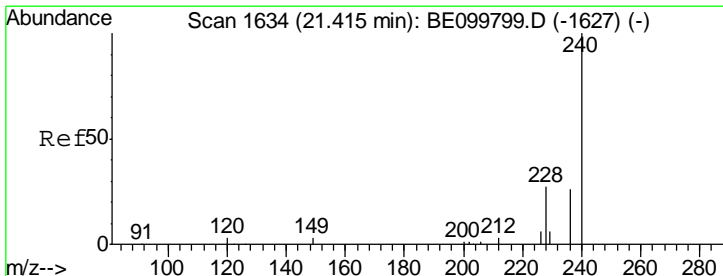
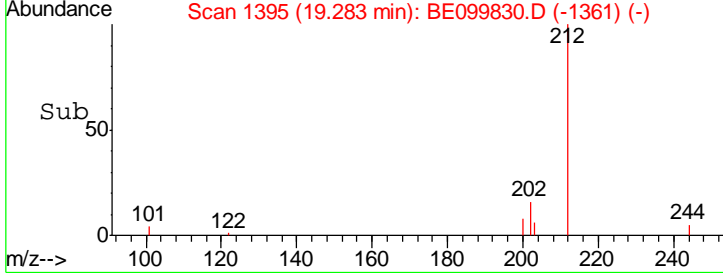
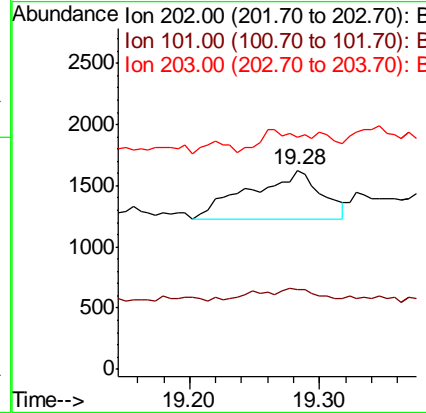
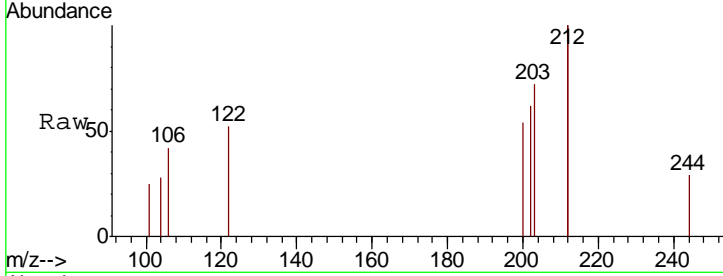




#26
 Fluoranthene
 Concen: 0.028 ng
 RT: 19.28 min Scan# 1395
 Delta R.T. -0.01 min
 Lab File: BE099830.D
 Acq: 6 Jun 2019 20:11

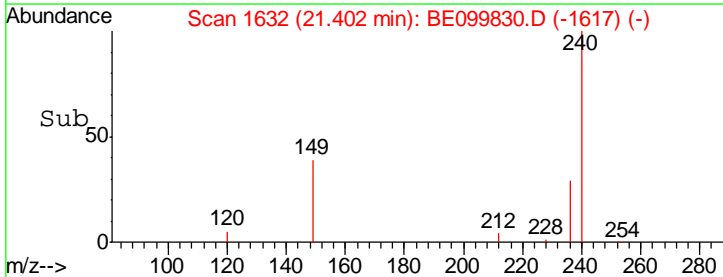
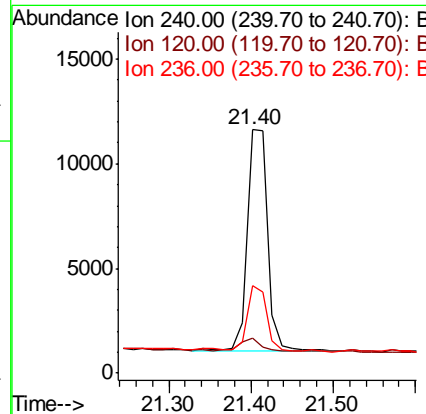
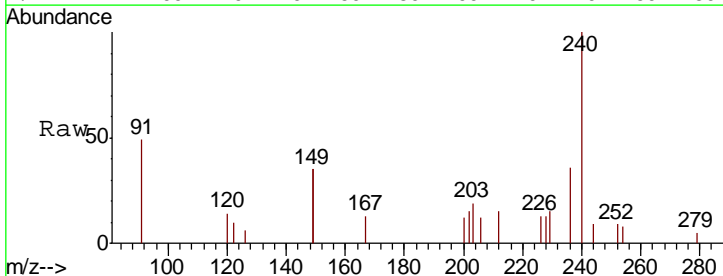
Instrument :
 BNA_E
 ClientSampled :
 BP-DUP01-20190603

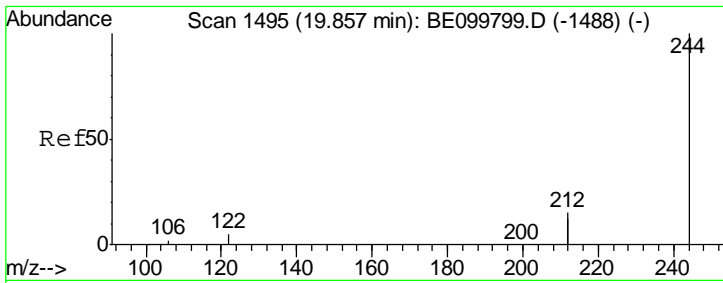
Tgt Ion	Resp	Lower	Upper
202	1516		
101	9.8	5.2	7.8#
203	21.4	13.6	20.4#



#27
 Chrysene-d12
 Concen: 0.400 ng
 RT: 21.40 min Scan# 1632
 Delta R.T. -0.01 min
 Lab File: BE099830.D
 Acq: 6 Jun 2019 20:11

Tgt Ion	Resp	Lower	Upper
240	18045		
120	14.5	2.8	4.2#
236	35.8	20.9	31.3#





#29

Terphenyl-d14

Concen: 2.602 ng

RT: 19.85 min Scan# 1494

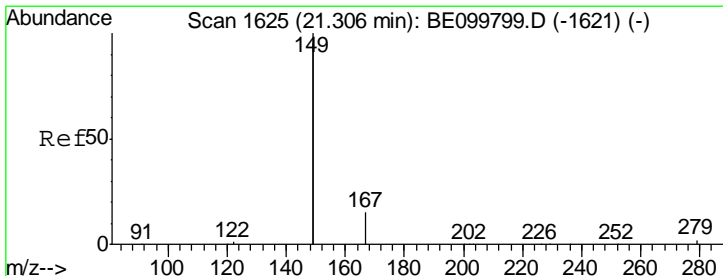
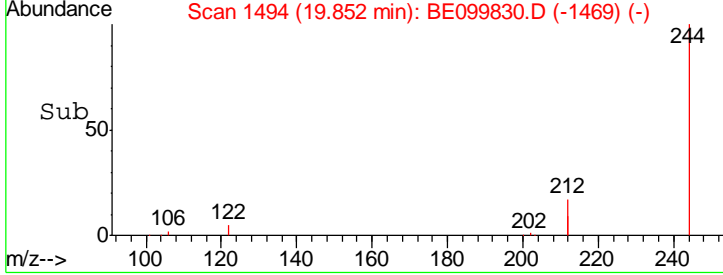
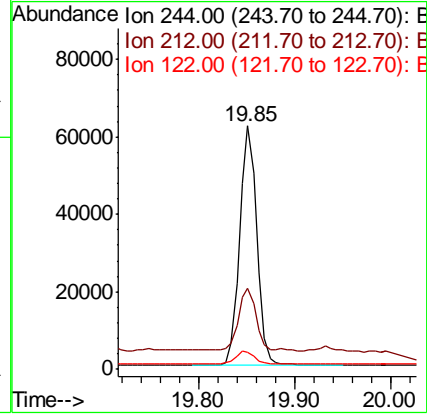
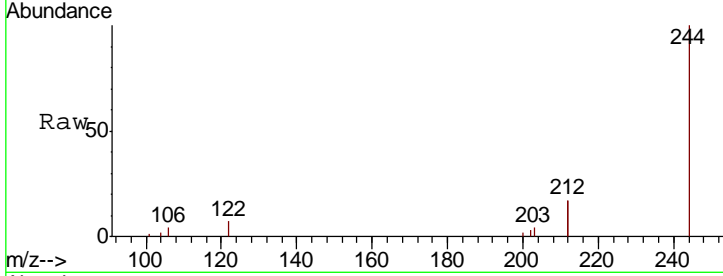
Delta R.T. -0.01 min

Lab File: BE099830.D

Acq: 6 Jun 2019 20:11

Instrument :
BNA_E
ClientSampleId :
BP-DUP01-20190603

Tgt Ion	Resp	Lower	Upper
244	100		
212	33.5	23.7	35.5
122	7.1	4.8	7.2



#32

Bis(2-ethylhexyl)phthalate

Concen: 0.248 ng

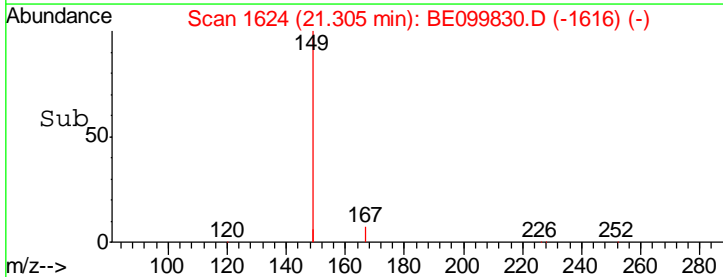
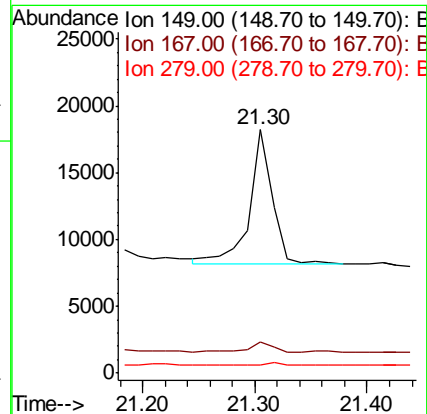
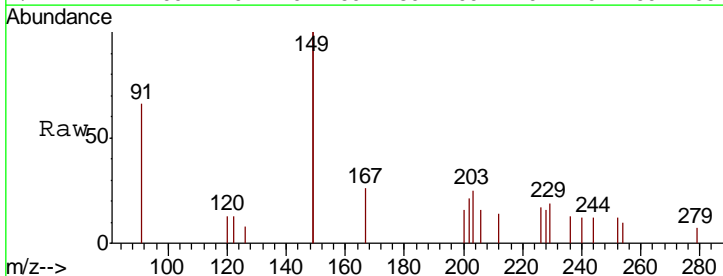
RT: 21.30 min Scan# 1624

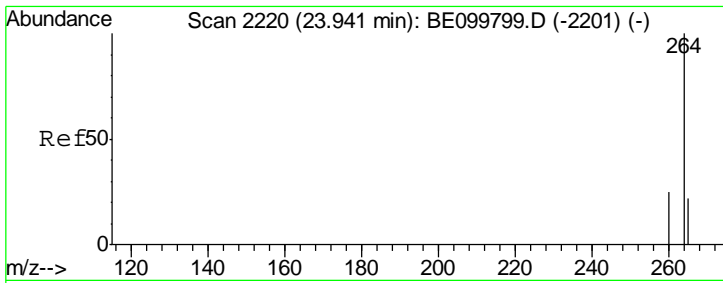
Delta R.T. -0.00 min

Lab File: BE099830.D

Acq: 6 Jun 2019 20:11

Tgt Ion	Resp	Lower	Upper
149	100		
167	7.6	6.0	9.0
279	2.0	1.2	1.8#





#34
 Perylene-d12
 Concen: 0.400 ng
 RT: 23.94 min Scan# 2220
 Delta R.T. 0.00 min
 Lab File: BE099830.D
 Acq: 6 Jun 2019 20:11

Instrument :
 BNA_E
 ClientSampleId :
 BP-DUP01-20190603

Tgt Ion: 264 Resp: 20995

Ion	Ratio	Lower	Upper
264	100		
260	26.9	20.0	30.0
265	31.5	20.7	31.1#

