

Data Path : Z:\SVOASRV\HPCHEM1\BNA E\DATA\BE060619\  
 Data File : BE099820.D  
 Acq On : 6 Jun 2019 13:54  
 Operator : JU/SJ  
 Sample : K3190-16MS  
 Misc :  
 ALS Vial : 8 Sample Multiplier: 1

Instrument :  
 BNA\_E  
 ClientSampleId :  
 BPS1-TT-MW304S-20190604MS

Manual Integrations  
 APPROVED

mohammad  
 6/7/2019 2:10:40 PM

Quant Time: Jun 07 04:20:44 2019  
 Quant Method : Z:\SVOASRV\HPCHEM1\BNA E\METHODS\8270-SIM-BE060519.M  
 Quant Title : ASP BNA STANDARDS FOR 5 POINT CALIBRATION  
 QLast Update : Wed Jun 05 14:35:58 2019  
 Response via : Initial Calibration

Internal Standards	R.T.	QIon	Response	Conc	Units	Dev(Min)
1) 1,4-Dichlorobenzene-d4	7.82	152	1045	0.40	ng	0.01
7) Naphthalene-d8	10.63	136	3607	0.40	ng	0.01
13) Acenaphthene-d10	14.48	164	2447	0.40	ng	0.01
19) Phenanthrene-d10	17.23	188	8983	0.40	ng	0.00
27) Chrysene-d12	21.41	240	16509	0.40	ng	0.00
34) Perylene-d12	23.95	264	18561	0.40	ng	0.01

## System Monitoring Compounds

4) 2-Fluorophenol	5.37	112	449	0.18	ng	0.01
5) Phenol-d6	7.00	99	351	0.11	ng	0.04
8) Nitrobenzene-d5	8.98	82	1159	0.37	ng	0.01
11) 2-Methylnaphthalene-d10	12.22	152	2903	0.47	ng	0.01
14) 2,4,6-Tribromophenol	15.98	330	536	0.42	ng	0.00
15) 2-Fluorobiphenyl	13.12	172	3448	0.38	ng	0.01
25) Fluoranthene-d10	19.26	212	54292	0.41	ng	0.00
29) Terphenyl-d14	19.86	244	13203	0.49	ng	0.00

## Target Compounds

Target Compounds	R.T.	QIon	Response	Conc	Units	Qvalue
2) 1,4-Dioxane	3.29	88	451	0.298	ng	# 64
3) n-Nitrosodimethylamine	3.61	42	171	0.213	ng	# 90
6) bis(2-Chloroethyl)ether	7.24	93	1117	0.390	ng	99
9) Naphthalene	10.68	128	14737	0.383	ng	99
10) Hexachlorobutadiene	10.95	225	952	0.325	ng	96
12) 2-Methylnaphthalene	12.31	142	2211	0.360	ng	95
16) Acenaphthylene	14.21	152	4476	0.379	ng	98
17) Acenaphthene	14.54	154	2518	0.390	ng	99
18) Fluorene	15.53	166	3757	0.395	ng	98
20) 4-Bromophenyl-phenylether	16.42	248	1781	0.355	ng	# 88
21) Hexachlorobenzene	16.53	284	1982m	0.361	ng	
22) Pentachlorophenol	16.89	266	1125	0.903	ng	88
23) Phenanthrene	17.27	178	8328	0.388	ng	98
24) Anthracene	17.36	178	8750m	0.452	ng	
26) Fluoranthene	19.29	202	16322	0.434	ng	100
28) Pyrene	19.66	202	17444	0.437	ng	100
30) Benzo(a)anthracene	21.39	228	21045	0.461	ng	99
31) Chrysene	21.45	228	21624	0.429	ng	98
32) Bis(2-ethylhexyl)phthalate	21.31	149	24048	0.459	ng	100
33) Indeno(1,2,3-cd)pyrene	26.64	276	23890	0.396	ng	99
35) Benzo(b)fluoranthene	23.16	252	20911	0.407	ng	# 97
36) Benzo(k)fluoranthene	23.22	252	23286	0.427	ng	100
37) Benzo(a)pyrene	23.84	252	19988	0.401	ng	# 92
38) Dibenzo(a,h)anthracene	26.67	278	18822	0.371	ng	97
39) Benzo(g,h,i)perylene	27.47	276	21143	0.397	ng	100

(#) = qualifier out of range (m) = manual integration (+) = signals summed

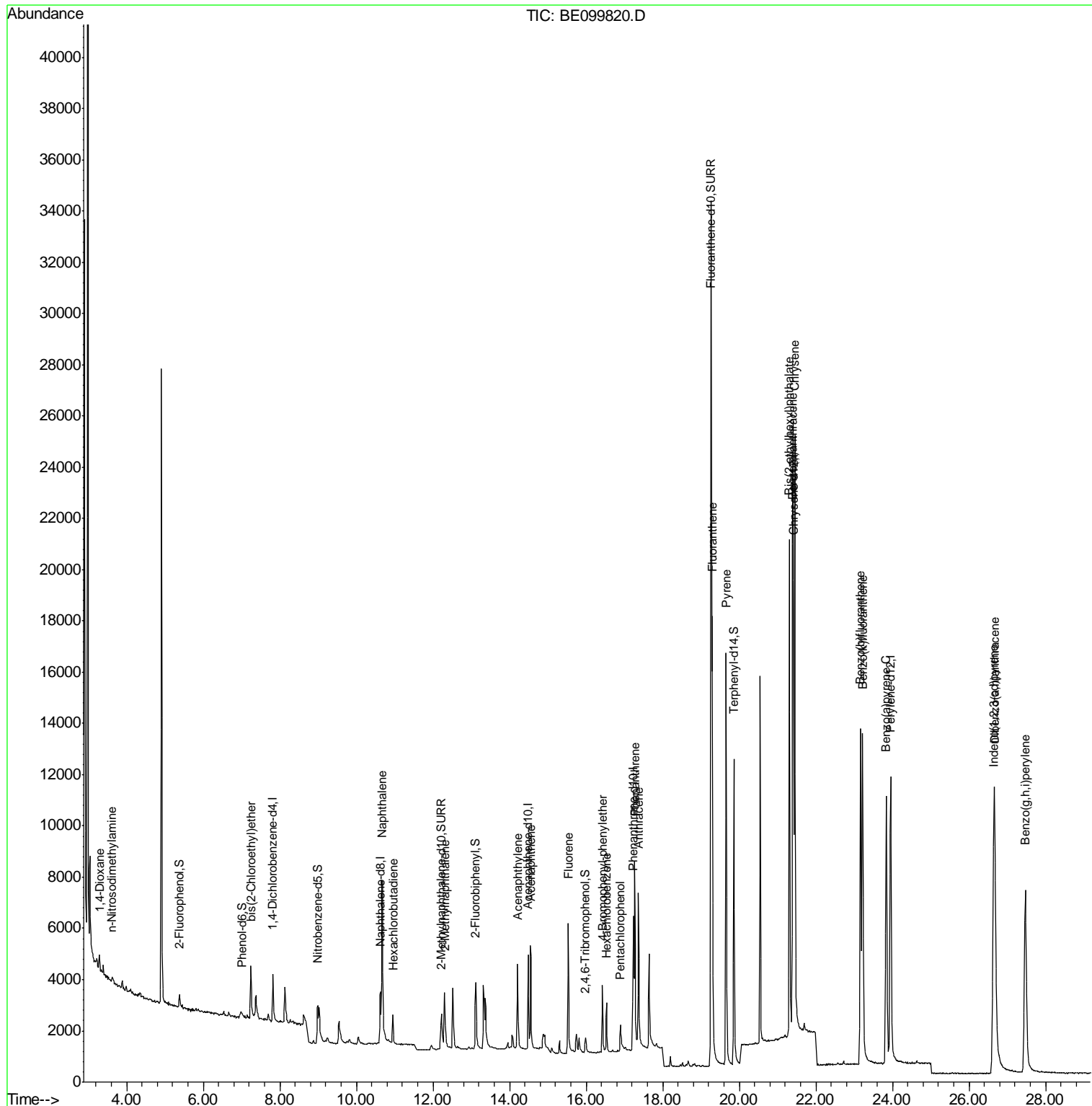
Data Path : Z:\SVOASRV\HPCHEM1\BNA E\DATA\BE060619\  
 Data File : BE099820.D  
 Acq On : 6 Jun 2019 13:54  
 Operator : JU/SJ  
 Sample : K3190-16MS  
 Misc :  
 ALS Vial : 8 Sample Multiplier: 1

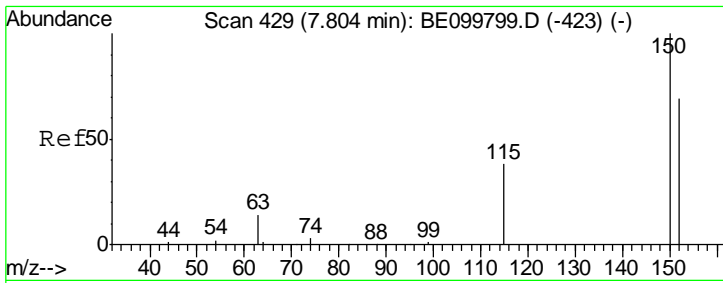
Instrument :  
 BNA\_E  
 Client Sampled :  
 BPS1-TT-MW304S-20190604MS

Manual Integrations  
 APPROVED

mohammad  
 6/7/2019 2:10:40 PM

Quant Time: Jun 07 04:20:44 2019  
 Quant Method : Z:\SVOASRV\HPCHEM1\BNA E\METHODS\8270-SIM-BE060519.M  
 Quant Title : ASP BNA STANDARDS FOR 5 POINT CALIBRATION  
 QLast Update : Wed Jun 05 14:35:58 2019  
 Response via : Initial Calibration





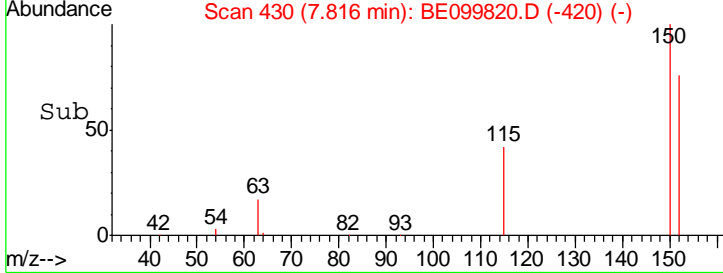
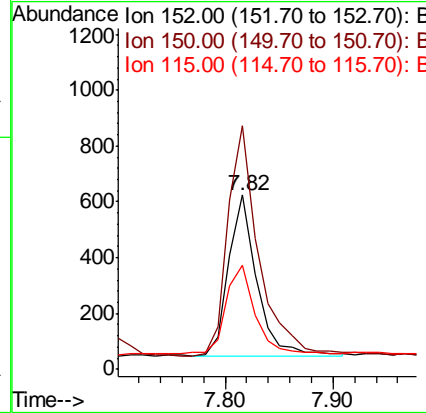
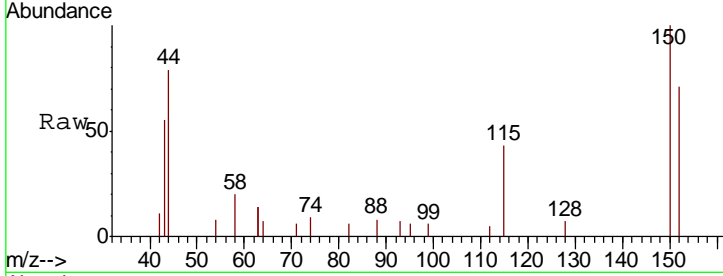
#1  
 1,4-Dichlorobenzene-d4  
 Concen: 0.400 ng  
 RT: 7.82 min Scan# 430  
 Delta R.T. 0.01 min  
 Lab File: BE099820.D  
 Acq: 6 Jun 2019 13:54

**Instrument :**  
 BNA\_E  
**ClientSampleId :**  
 BPS1-TT-MW304S-20190604MS

Tgt Ion	Resp	Lower	Upper
152	1045		
152	100		
150	140.0	112.8	169.2
115	59.9	47.6	71.4

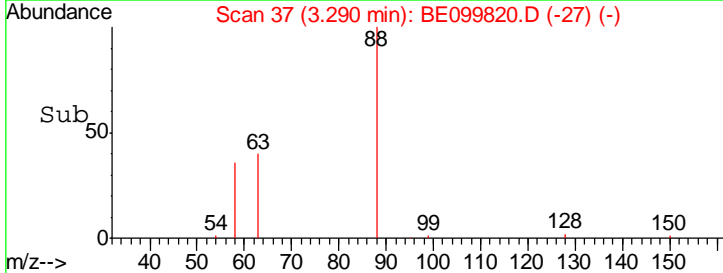
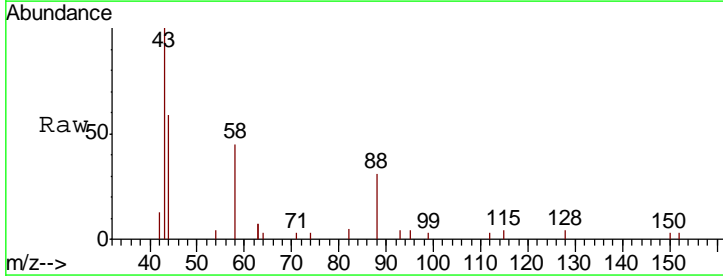
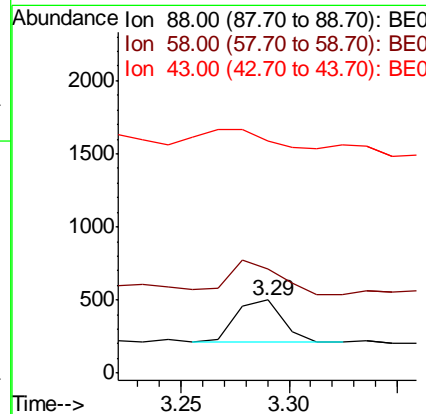
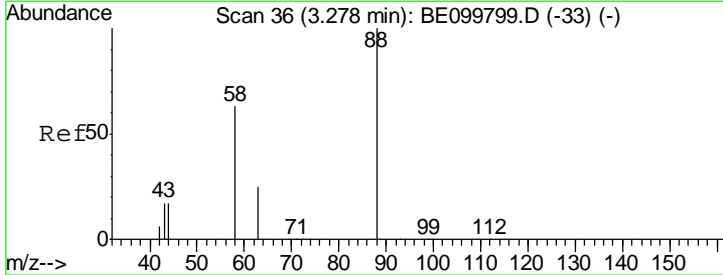
**Manual Integrations**  
**APPROVED**

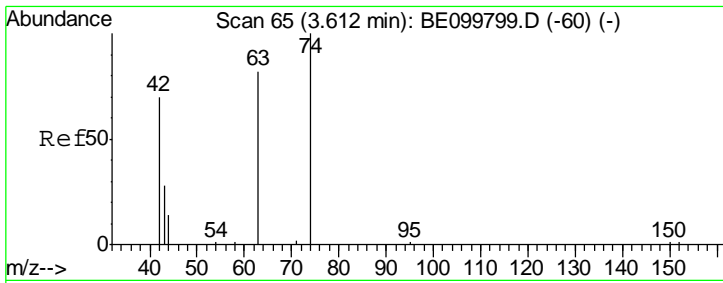
mohammad  
 6/7/2019 2:10:40 PM



#2  
 1,4-Dioxane  
 Concen: 0.298 ng  
 RT: 3.29 min Scan# 37  
 Delta R.T. 0.01 min  
 Lab File: BE099820.D  
 Acq: 6 Jun 2019 13:54

Tgt Ion	Resp	Lower	Upper
88	451		
88	100		
58	82.5	47.3	70.9#
43	0.0	18.2	27.4#





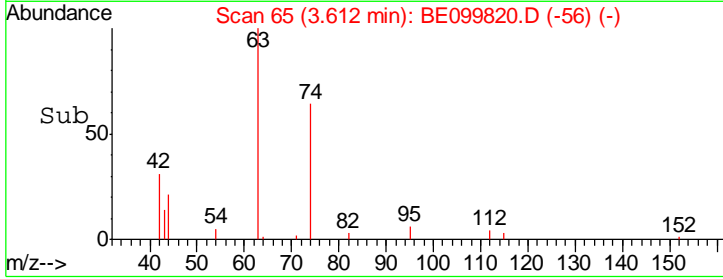
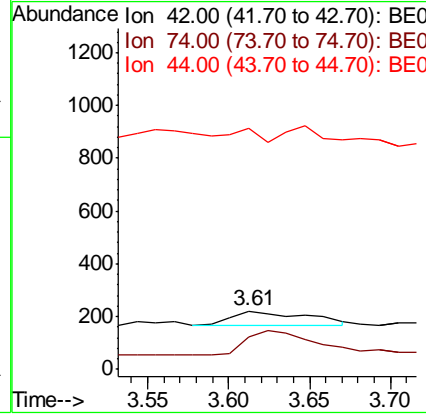
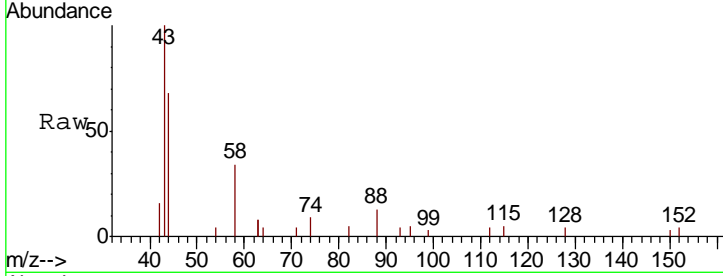
#3  
 n-Nitrosodimethylamine  
 Concen: 0.213 ng  
 RT: 3.61 min Scan# 65  
 Delta R.T. 0.00 min  
 Lab File: BE099820.D  
 Acq: 6 Jun 2019 13:54

**Instrument :**  
 BNA\_E  
**ClientSampleId :**  
 BPS1-TT-MW304S-20190604MS

Tgt Ion	Resp	Lower	Upper
42	100		
74	156.1	132.6	198.8
44	0.0	13.4	20.0

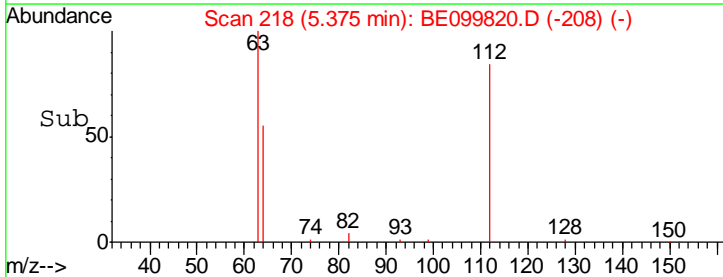
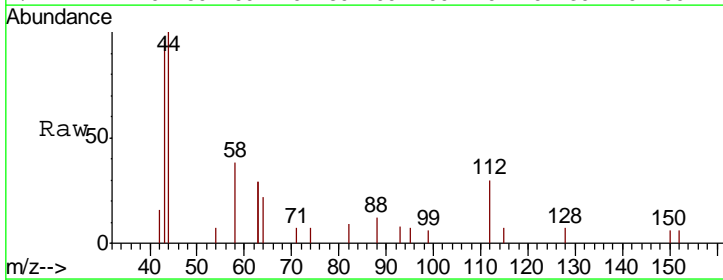
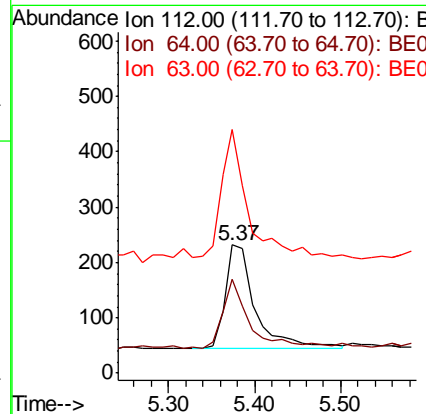
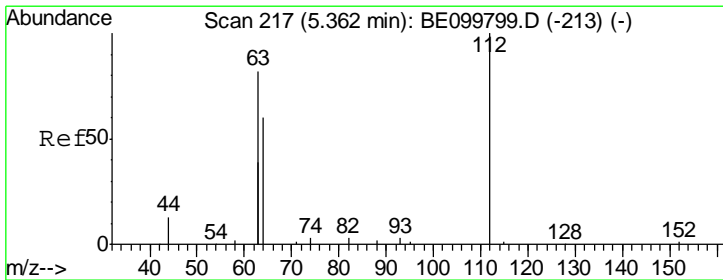
**Manual Integrations**  
**APPROVED**

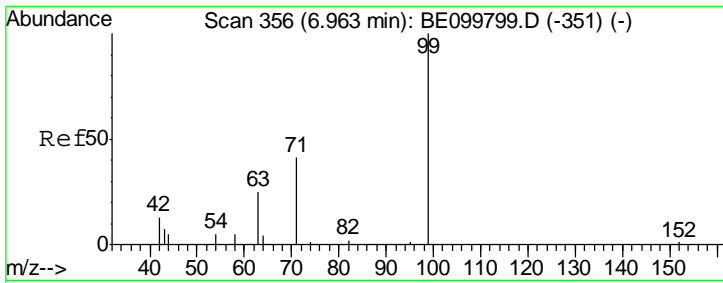
mohammad  
 6/7/2019 2:10:40 PM



#4  
 2-Fluorophenol  
 Concen: 0.177 ng  
 RT: 5.37 min Scan# 218  
 Delta R.T. 0.01 min  
 Lab File: BE099820.D  
 Acq: 6 Jun 2019 13:54

Tgt Ion	Resp	Lower	Upper
112	100		
64	56.3	47.2	70.8
63	116.9	90.7	136.1





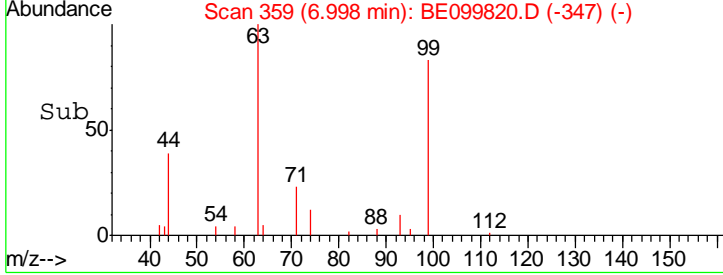
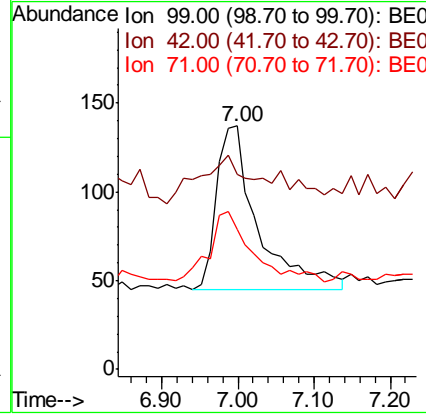
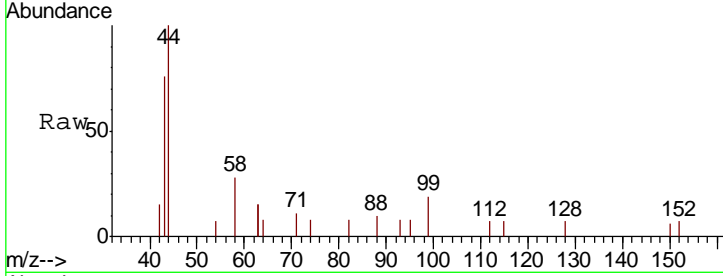
#5  
 Phenol-d6  
 Concen: 0.107 ng  
 RT: 7.00 min Scan# 359  
 Delta R.T. 0.04 min  
 Lab File: BE099820.D  
 Acq: 6 Jun 2019 13:54

**Instrument :**  
 BNA\_E  
**ClientSampled :**  
 BPS1-TT-MW304S-20190604MS

Tgt Ion	Ratio	Lower	Upper
99	100		
42	32.5	11.0	16.4#
71	45.6	26.1	39.1#

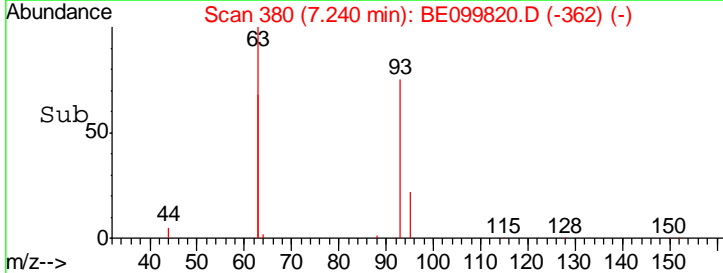
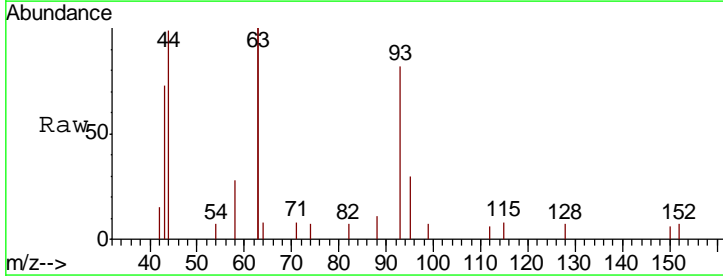
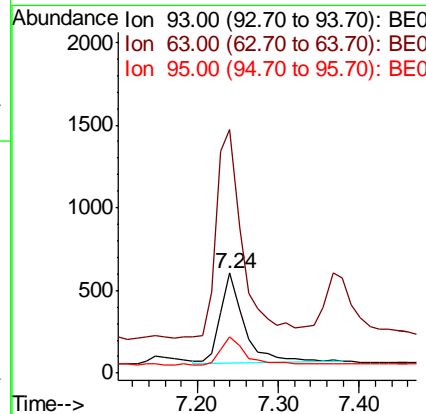
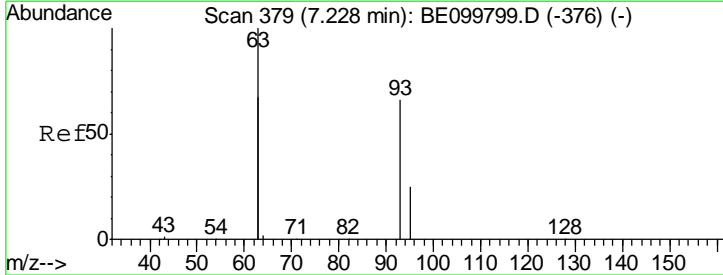
**Manual Integrations**  
**APPROVED**

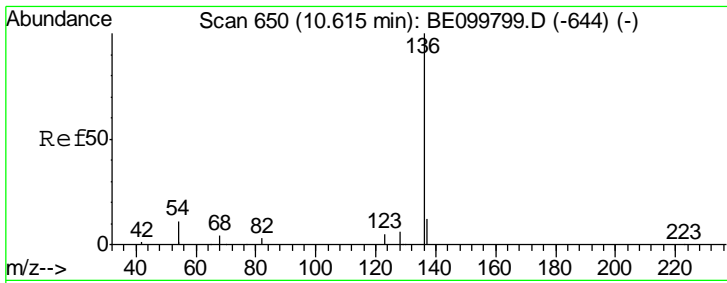
mohammad  
 6/7/2019 2:10:40 PM



#6  
 bis(2-Chloroethyl)ether  
 Concen: 0.390 ng  
 RT: 7.24 min Scan# 380  
 Delta R.T. 0.01 min  
 Lab File: BE099820.D  
 Acq: 6 Jun 2019 13:54

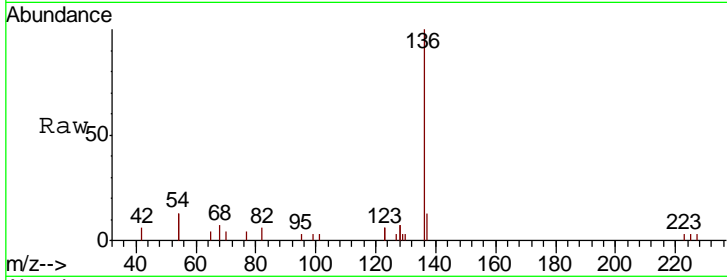
Tgt Ion	Ratio	Lower	Upper
93	100		
63	258.4	208.8	313.2
95	34.0	27.6	41.4





#7  
 Naphthalene-d8  
 Concen: 0.400 ng  
 RT: 10.63 min Scan# 651  
 Delta R.T. 0.01 min  
 Lab File: BE099820.D  
 Acq: 6 Jun 2019 13:54

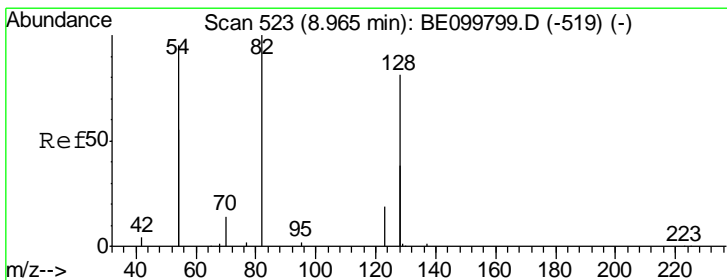
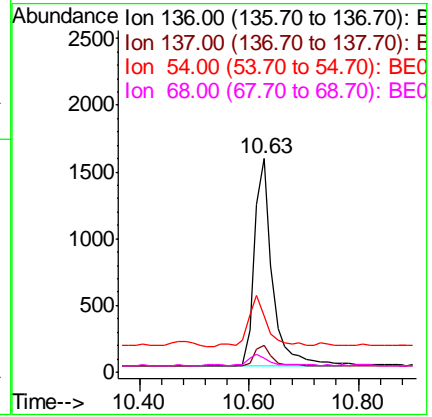
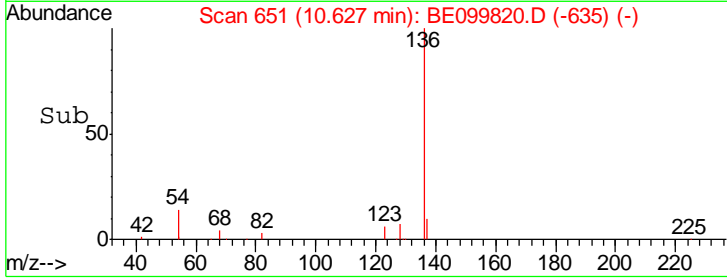
**Instrument :**  
 BNA\_E  
**ClientSampled :**  
 BPS1-TT-MW304S-20190604MS



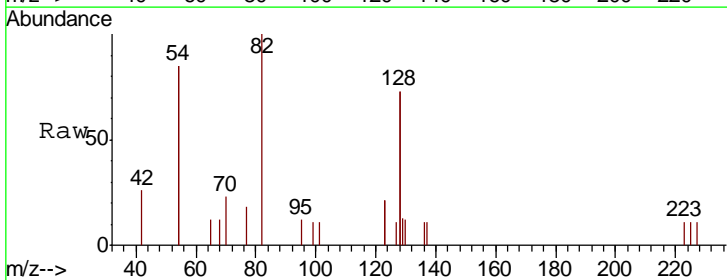
Tgt Ion: 136 Resp: 3607

Ion	Ratio	Lower	Upper
136	100		
137	12.8	11.1	16.7
54	26.3	17.9	26.9
68	6.8	5.4	8.0

**Manual Integrations**  
**APPROVED**  
 mohammad  
 6/7/2019 2:10:40 PM

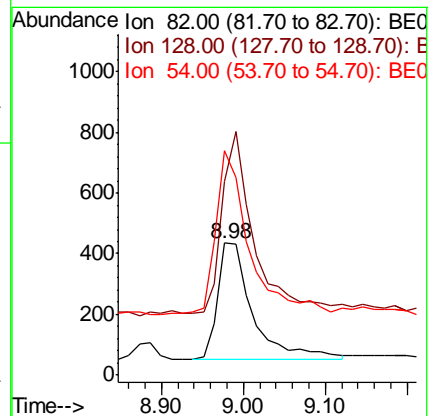
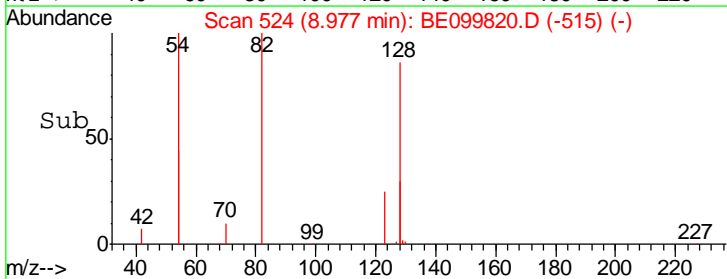


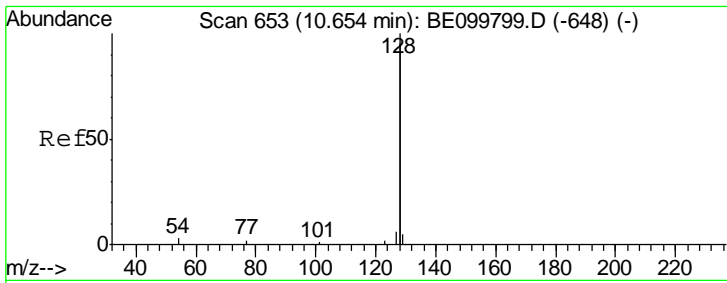
#8  
 Nitrobenzene-d5  
 Concen: 0.366 ng  
 RT: 8.98 min Scan# 524  
 Delta R.T. 0.01 min  
 Lab File: BE099820.D  
 Acq: 6 Jun 2019 13:54



Tgt Ion: 82 Resp: 1159

Ion	Ratio	Lower	Upper
82	100		
128	146.7	116.6	175.0
54	170.1	136.2	204.4





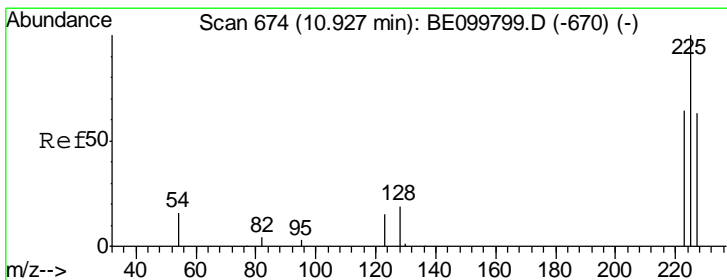
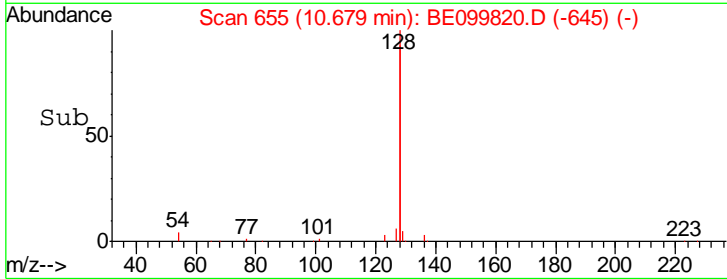
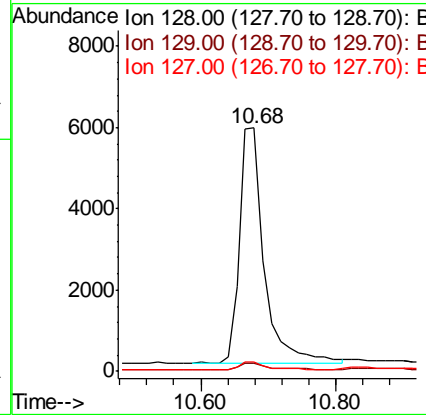
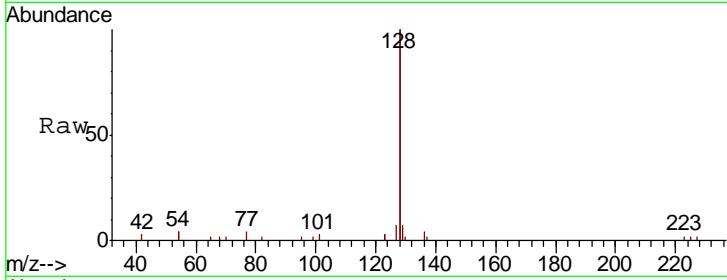
#9  
 Naphthalene  
 Concen: 0.383 ng  
 RT: 10.68 min Scan# 655  
 Delta R.T. 0.03 min  
 Lab File: BE099820.D  
 Acq: 6 Jun 2019 13:54

Instrument :  
 BNA\_E  
 ClientSampleId :  
 BPS1-TT-MW304S-20190604MS

Tgt Ion	Resp	Lower	Upper
128	14737		
129	3.4	2.6	4.0
127	3.6	3.0	4.6

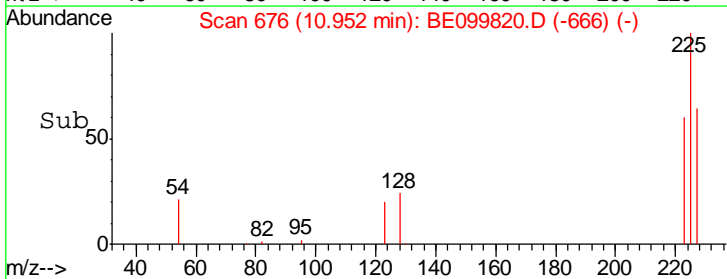
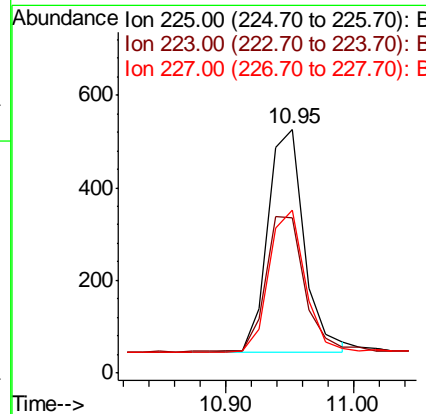
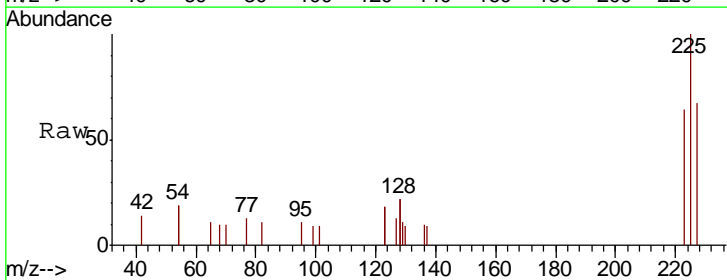
Manual Integrations  
 APPROVED

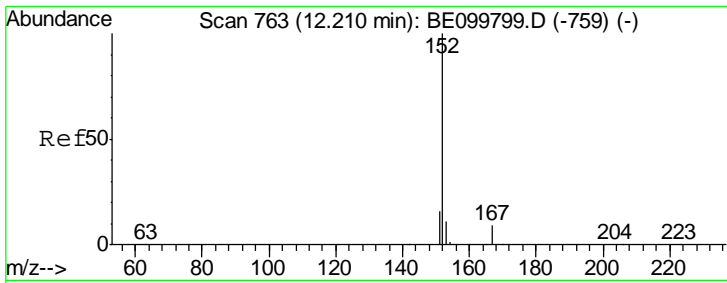
mohammad  
 6/7/2019 2:10:40 PM



#10  
 Hexachlorobutadiene  
 Concen: 0.325 ng  
 RT: 10.95 min Scan# 676  
 Delta R.T. 0.03 min  
 Lab File: BE099820.D  
 Acq: 6 Jun 2019 13:54

Tgt Ion	Resp	Lower	Upper
225	952		
223	65.7	48.6	72.8
227	63.8	51.6	77.4





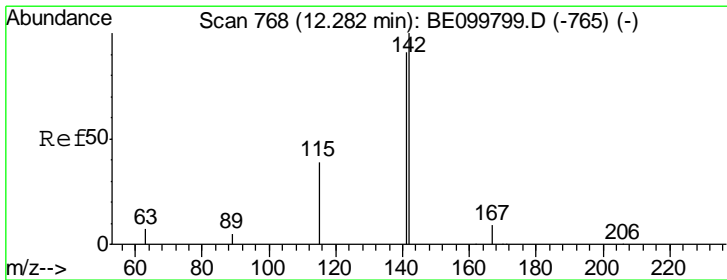
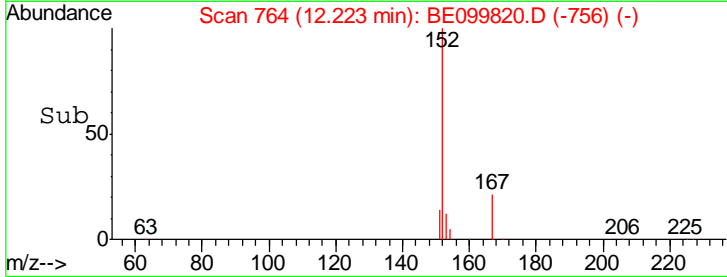
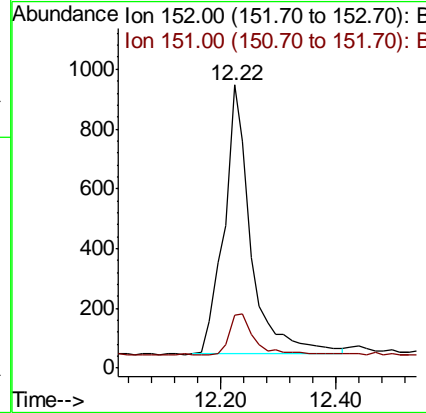
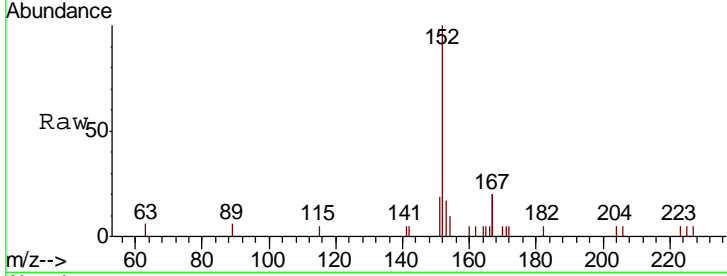
#11  
 2-Methylnaphthalene-d10  
 Concen: 0.469 ng  
 RT: 12.22 min Scan# 764  
 Delta R.T. 0.01 min  
 Lab File: BE099820.D  
 Acq: 6 Jun 2019 13:54

**Instrument :**  
 BNA\_E  
**ClientSampleId :**  
 BPS1-TT-MW304S-20190604MS

Tgt Ion	Resp	Lower	Upper
152	2903		
151	13.7	15.8	23.8#

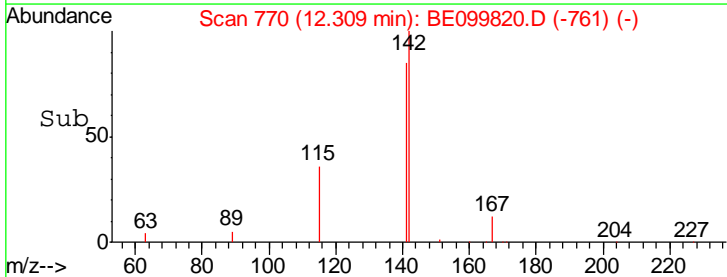
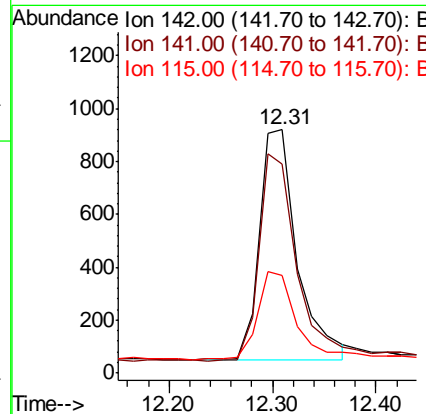
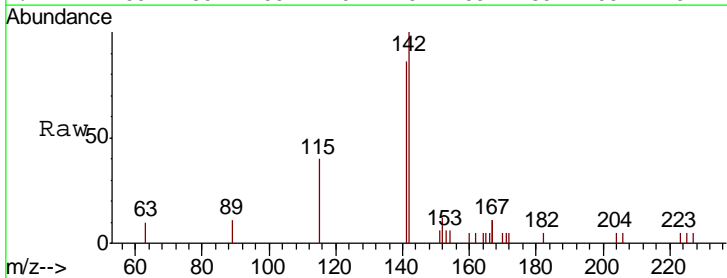
**Manual Integrations**  
**APPROVED**

mohammad  
 6/7/2019 2:10:40 PM

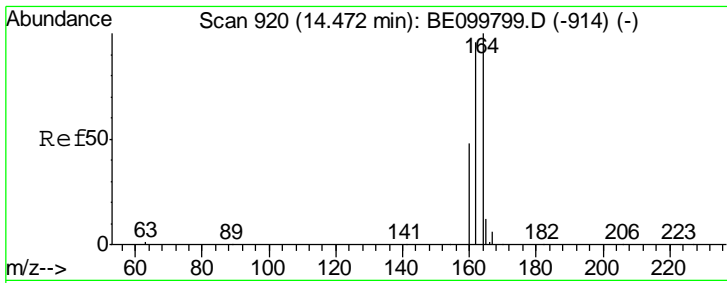


#12  
 2-Methylnaphthalene  
 Concen: 0.360 ng  
 RT: 12.31 min Scan# 770  
 Delta R.T. 0.03 min  
 Lab File: BE099820.D  
 Acq: 6 Jun 2019 13:54

Tgt Ion	Resp	Lower	Upper
142	2211		
141	85.7	73.3	109.9
115	40.0	33.4	50.2







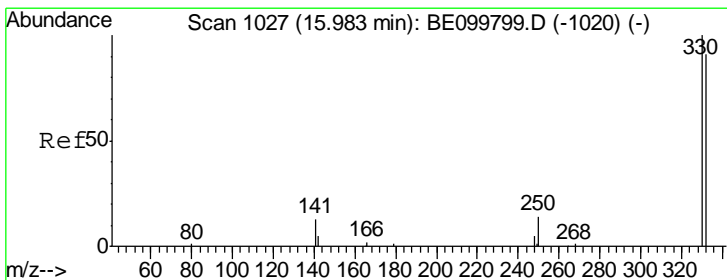
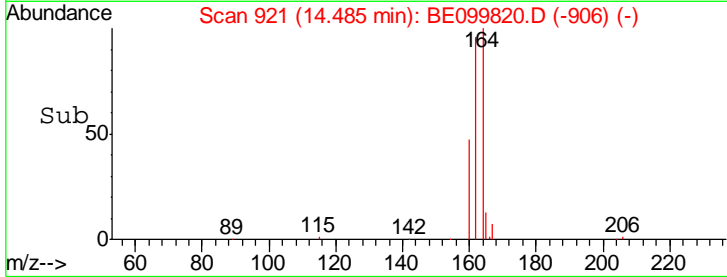
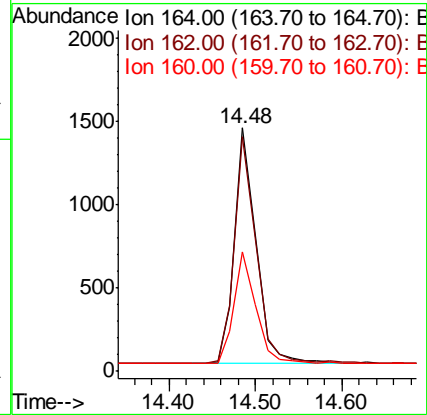
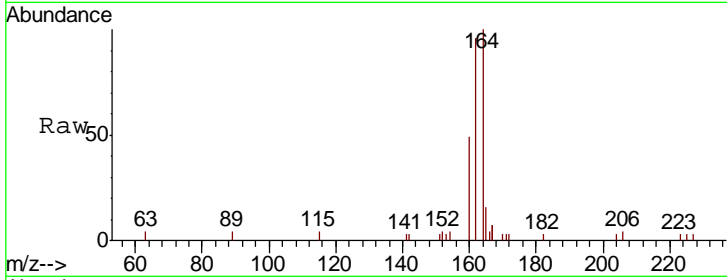
#13  
 Acenaphthene-d10  
 Concen: 0.400 ng  
 RT: 14.48 min Scan# 921  
 Delta R.T. 0.01 min  
 Lab File: BE099820.D  
 Acq: 6 Jun 2019 13:54

**Instrument :**  
 BNA\_E  
**ClientSampled :**  
 BPS1-TT-MW304S-20190604MS

Tgt Ion	Resp	Lower	Upper
164	100		
162	96.4	77.2	115.8
160	48.9	39.4	59.2

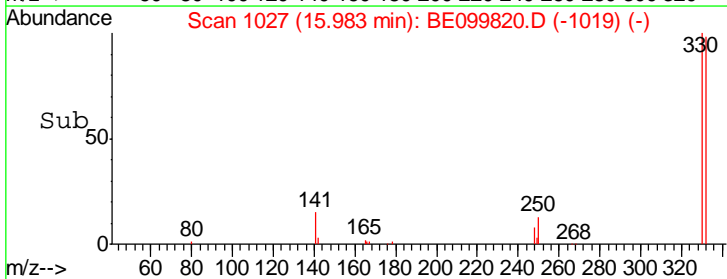
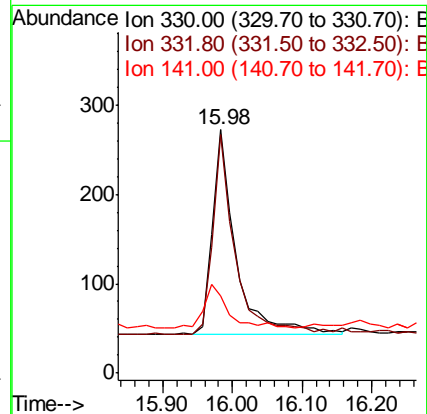
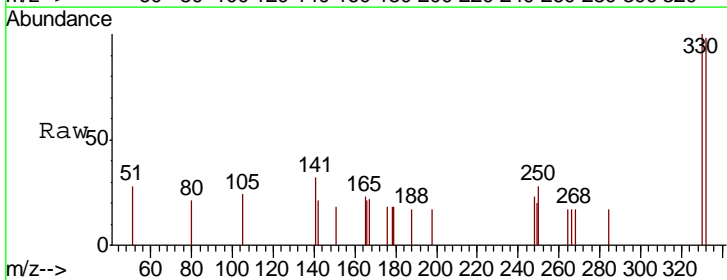
**Manual Integrations**  
**APPROVED**

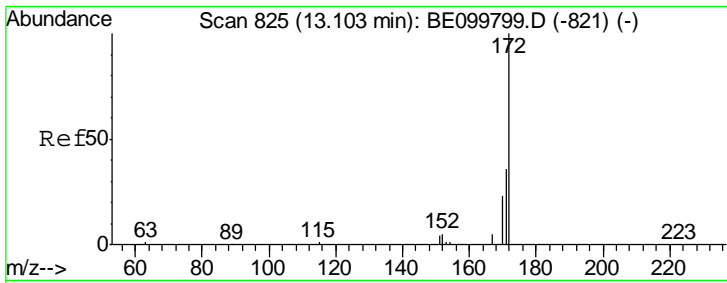
mohammad  
 6/7/2019 2:10:40 PM



#14  
 2,4,6-Tribromophenol  
 Concen: 0.421 ng  
 RT: 15.98 min Scan# 1027  
 Delta R.T. 0.00 min  
 Lab File: BE099820.D  
 Acq: 6 Jun 2019 13:54

Tgt Ion	Resp	Lower	Upper
330	100		
332	91.4	74.9	112.3
141	20.5	16.0	24.0





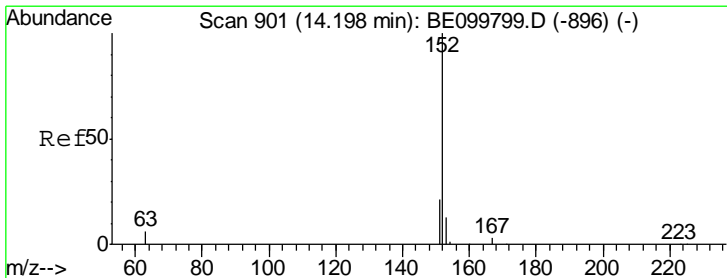
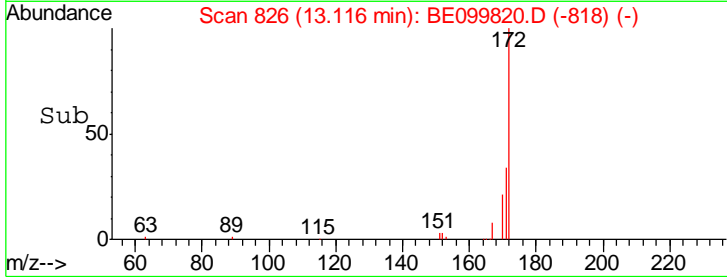
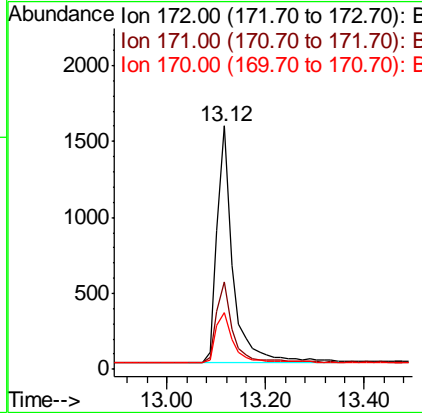
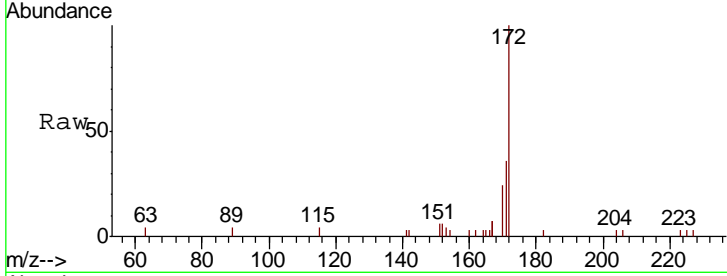
#15  
 2-Fluorobiphenyl  
 Concen: 0.379 ng  
 RT: 13.12 min Scan# 826  
 Delta R.T. 0.01 min  
 Lab File: BE099820.D  
 Acq: 6 Jun 2019 13:54

**Instrument :**  
 BNA\_E  
**ClientSampled :**  
 BPS1-TT-MW304S-20190604MS

Tgt Ion	Resp	Lower	Upper
172	3448		
171	100	30.2	45.4
170	23.5	20.1	30.1

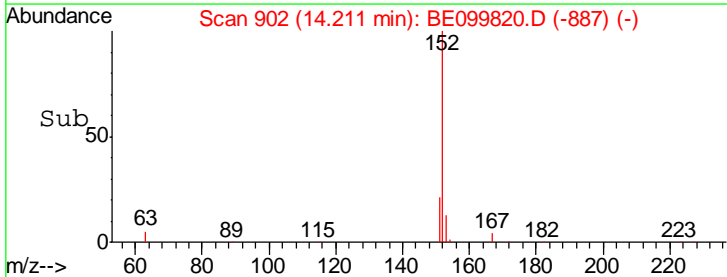
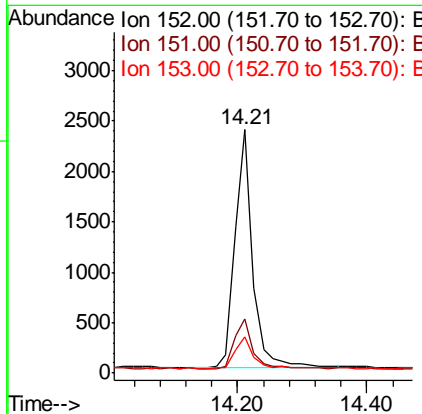
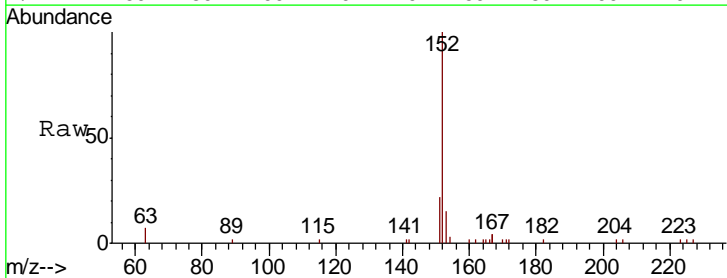
**Manual Integrations**  
**APPROVED**

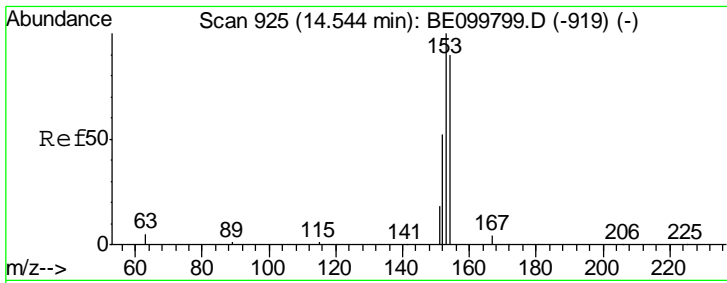
mohammad  
 6/7/2019 2:10:40 PM



#16  
 Acenaphthylene  
 Concen: 0.379 ng  
 RT: 14.21 min Scan# 902  
 Delta R.T. 0.01 min  
 Lab File: BE099820.D  
 Acq: 6 Jun 2019 13:54

Tgt Ion	Resp	Lower	Upper
152	4476		
151	100	15.9	23.9
153	21.3	10.8	16.2





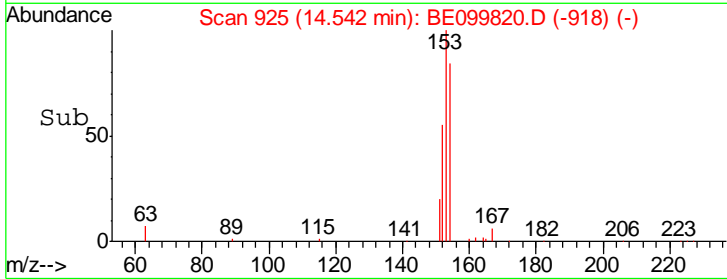
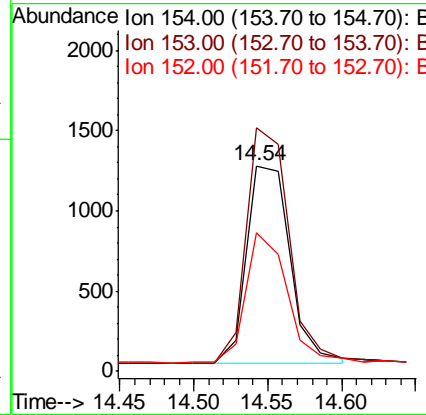
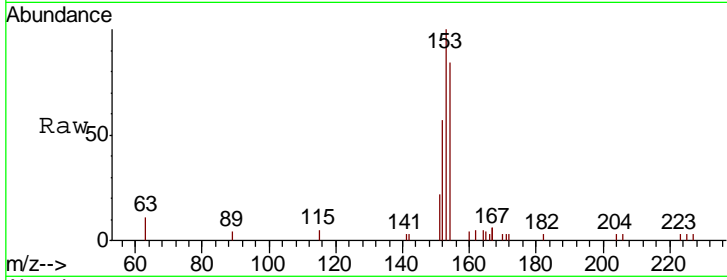
#17  
 Acenaphthene  
 Concen: 0.390 ng  
 RT: 14.54 min Scan# 925  
 Delta R.T. -0.00 min  
 Lab File: BE099820.D  
 Acq: 6 Jun 2019 13:54

Instrument :  
 BNA\_E  
 ClientSampleId :  
 BPS1-TT-MW304S-20190604MS

Tgt Ion	Resp	Lower	Upper
154	100		
153	117.4	93.8	140.6
152	62.8	48.3	72.5

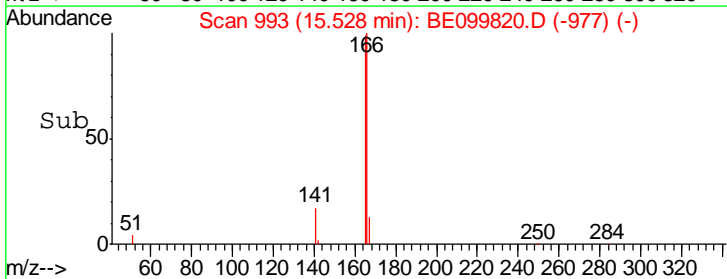
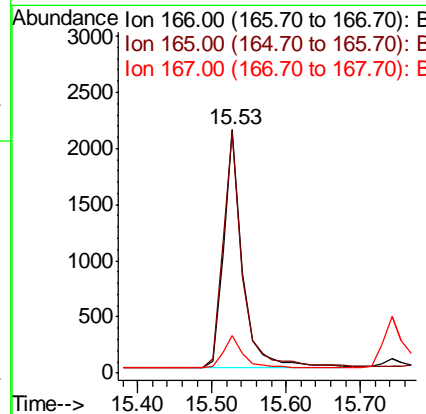
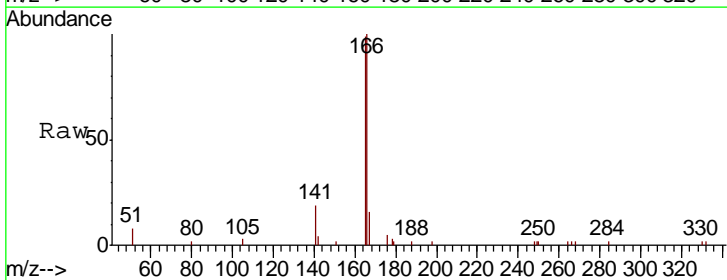
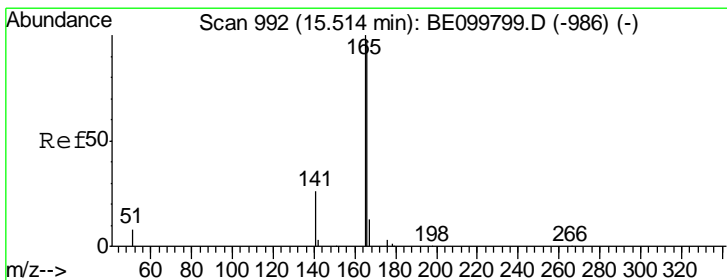
Manual Integrations  
 APPROVED

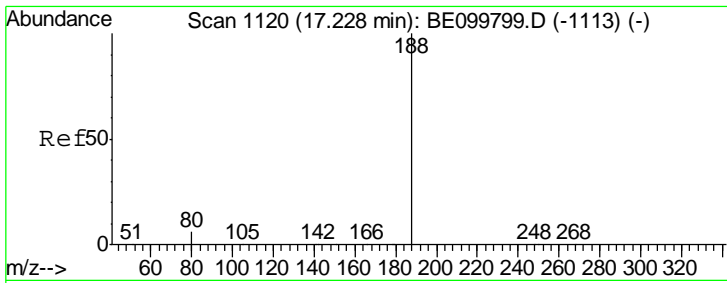
mohammad  
 6/7/2019 2:10:40 PM



#18  
 Fluorene  
 Concen: 0.395 ng  
 RT: 15.53 min Scan# 993  
 Delta R.T. 0.01 min  
 Lab File: BE099820.D  
 Acq: 6 Jun 2019 13:54

Tgt Ion	Resp	Lower	Upper
166	100		
165	101.9	80.4	120.6
167	14.6	10.7	16.1



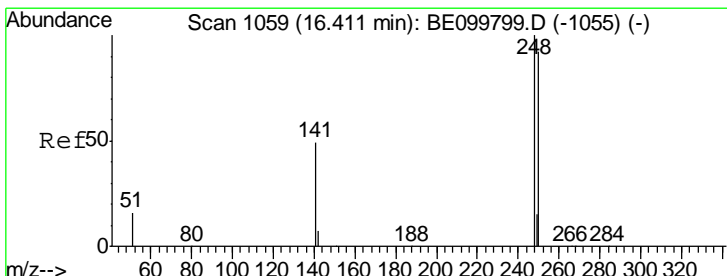
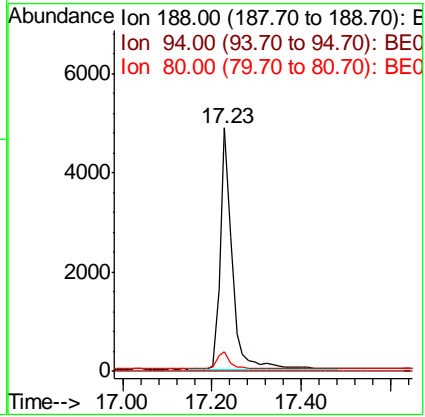
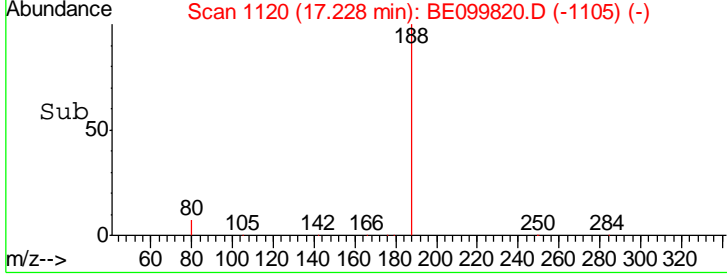
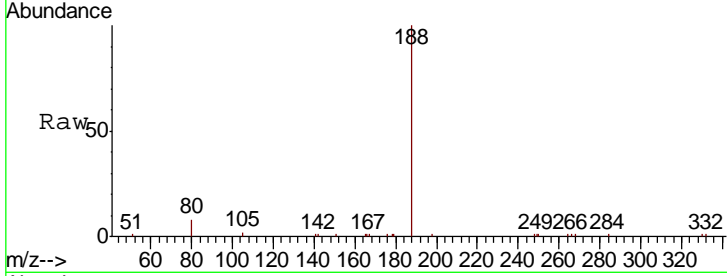


#19  
 Phenanthrene-d10  
 Concen: 0.400 ng  
 RT: 17.23 min Scan# 1120  
 Delta R.T. 0.00 min  
 Lab File: BE099820.D  
 Acq: 6 Jun 2019 13:54

**Instrument :**  
 BNA\_E  
**ClientSampled :**  
 BPS1-TT-MW304S-20190604MS

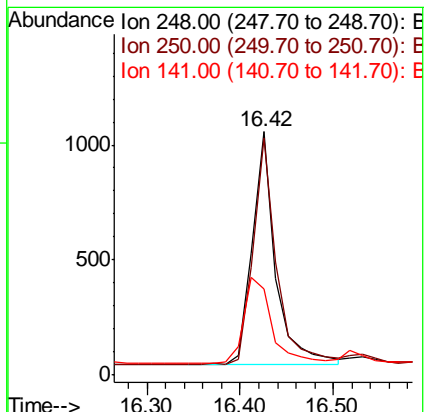
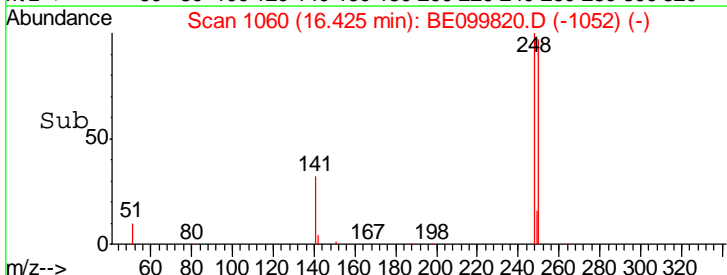
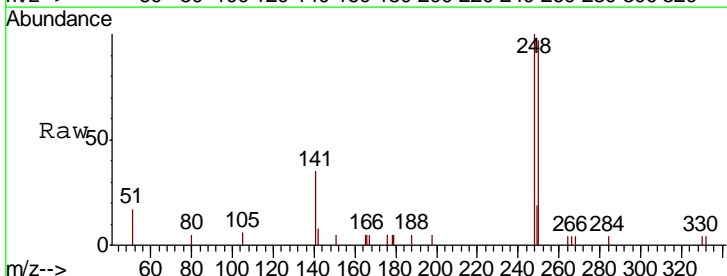
Tgt Ion	Ratio	Lower	Upper
188	100		
94	0.0	0.0	0.0
80	8.0	5.2	7.8#

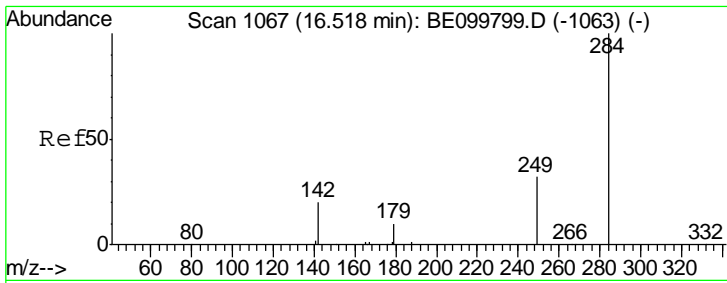
**Manual Integrations**  
**APPROVED**  
 mohammad  
 6/7/2019 2:10:40 PM



#20  
 4-Bromophenyl-phenylether  
 Concen: 0.355 ng  
 RT: 16.42 min Scan# 1060  
 Delta R.T. 0.01 min  
 Lab File: BE099820.D  
 Acq: 6 Jun 2019 13:54

Tgt Ion	Ratio	Lower	Upper
248	100		
250	97.4	73.7	110.5
141	35.2	40.9	61.3#





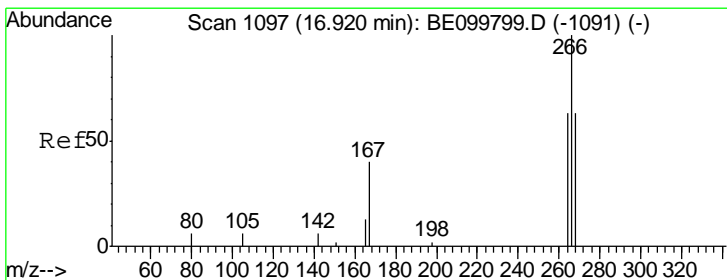
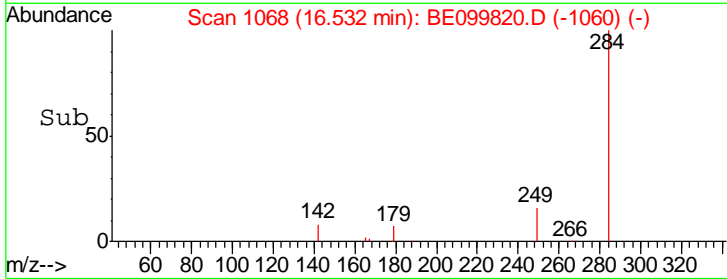
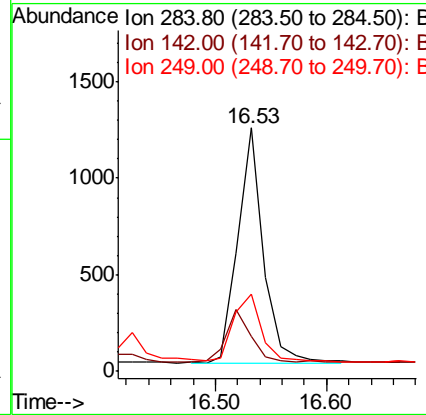
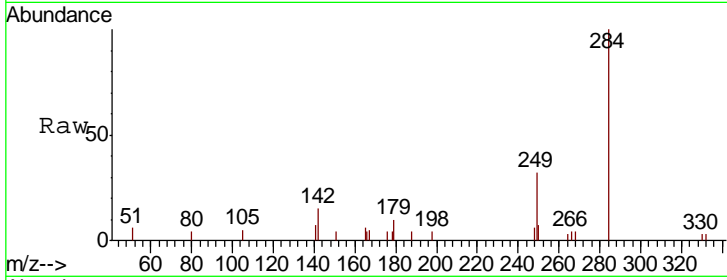
#21  
 Hexachlorobenzene  
 Concen: 0.361 ng m  
 RT: 16.53 min Scan# 1068  
 Delta R.T. 0.01 min  
 Lab File: BE099820.D  
 Acq: 6 Jun 2019 13:54

Instrument :  
 BNA\_E  
 ClientSampleId :  
 BPS1-TT-MW304S-20190604MS

Tgt Ion	Resp	Lower	Upper
284	1982		
284	100		
142	21.1	16.2	24.4
249	29.4	23.1	34.7

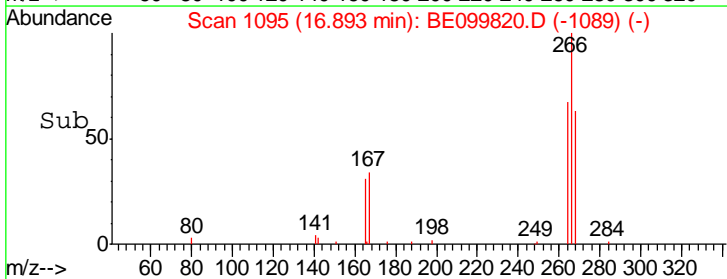
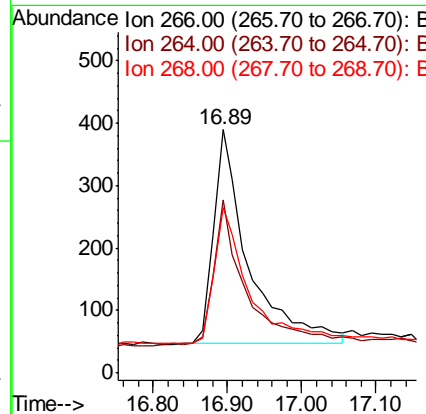
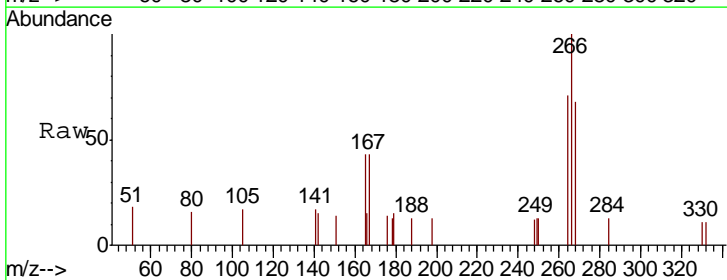
Manual Integrations  
 APPROVED

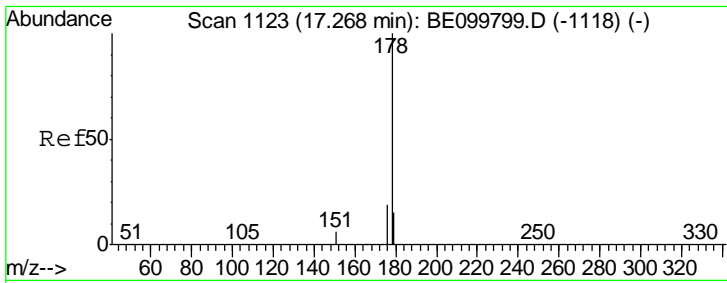
mohammad  
 6/7/2019 2:10:40 PM



#22  
 Pentachlorophenol  
 Concen: 0.903 ng  
 RT: 16.89 min Scan# 1095  
 Delta R.T. -0.03 min  
 Lab File: BE099820.D  
 Acq: 6 Jun 2019 13:54

Tgt Ion	Resp	Lower	Upper
266	1125		
266	100		
264	71.0	64.9	97.3
268	67.9	64.0	96.0





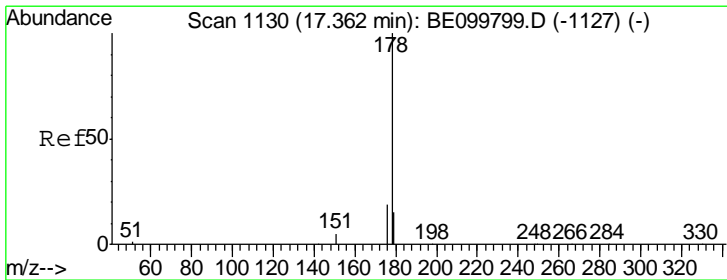
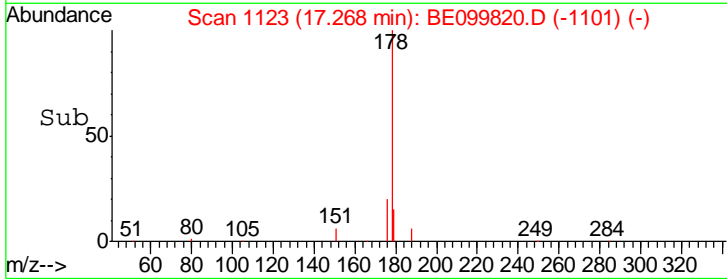
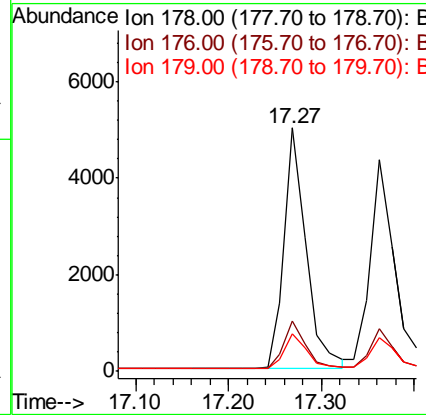
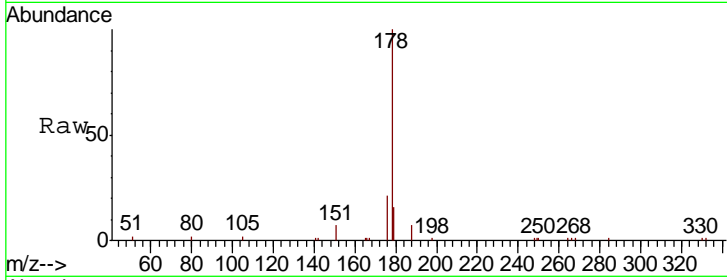
#23  
 Phenanthrene  
 Concen: 0.388 ng  
 RT: 17.27 min Scan# 1123  
 Delta R.T. 0.00 min  
 Lab File: BE099820.D  
 Acq: 6 Jun 2019 13:54

Instrument :  
 BNA\_E  
 ClientSampleId :  
 BPS1-TT-MW304S-20190604MS

Tgt Ion	Resp	Lower	Upper
178	100		
176	19.9	15.4	23.0
179	16.4	12.5	18.7

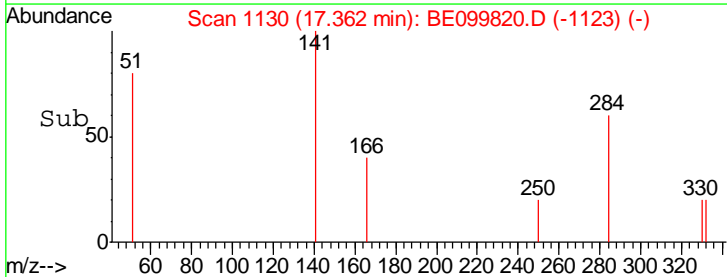
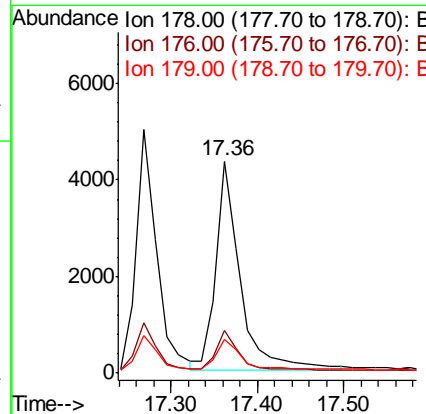
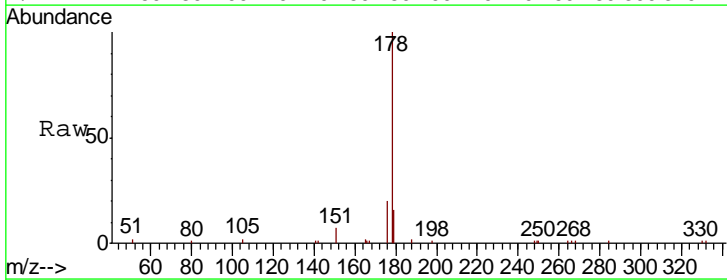
Manual Integrations  
 APPROVED

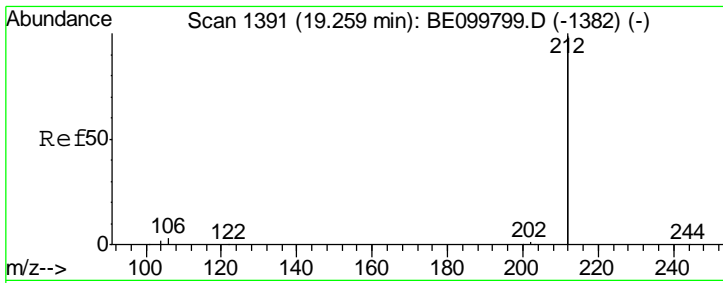
mohammad  
 6/7/2019 2:10:40 PM



#24  
 Anthracene  
 Concen: 0.452 ng m  
 RT: 17.36 min Scan# 1130  
 Delta R.T. 0.00 min  
 Lab File: BE099820.D  
 Acq: 6 Jun 2019 13:54

Tgt Ion	Resp	Lower	Upper
178	100		
176	15.8	15.1	22.7
179	13.0	12.1	18.1





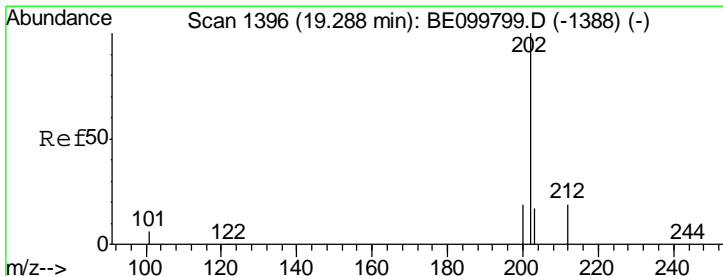
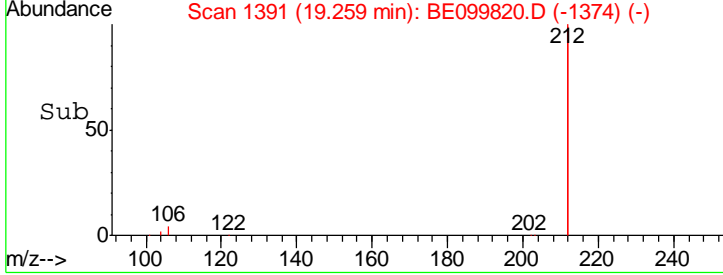
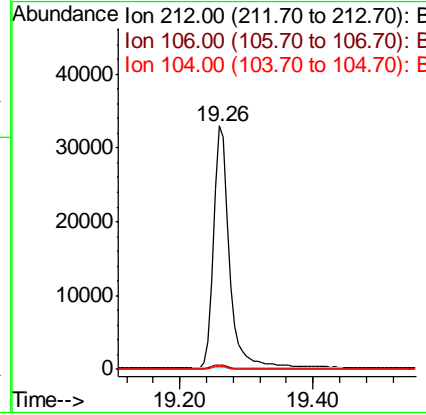
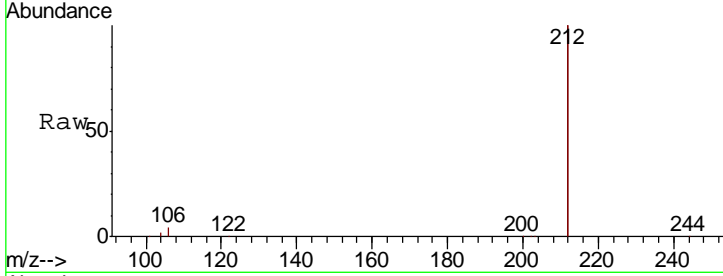
#25  
 Fluoranthene-d10  
 Concen: 0.407 ng  
 RT: 19.26 min Scan# 1391  
 Delta R.T. 0.00 min  
 Lab File: BE099820.D  
 Acq: 6 Jun 2019 13:54

**Instrument :**  
 BNA\_E  
**ClientSampled :**  
 BPS1-TT-MW304S-20190604MS

Tgt Ion	Resp	Lower	Upper
212	100		
106	1.9	1.4	2.0
104	1.0	0.8	1.2

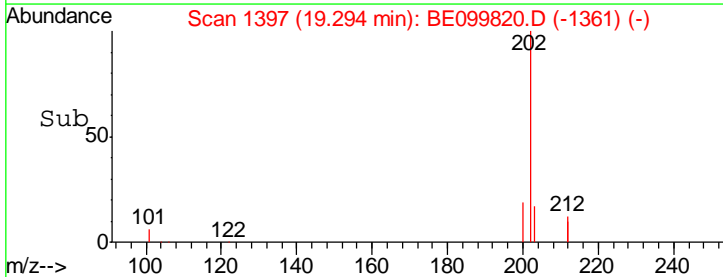
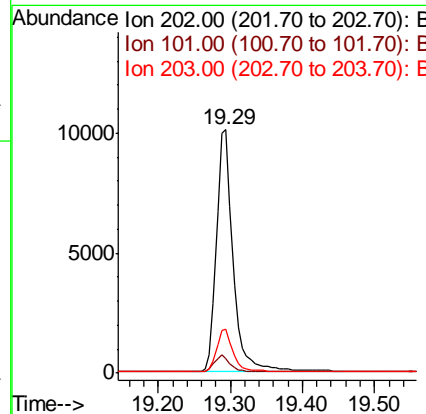
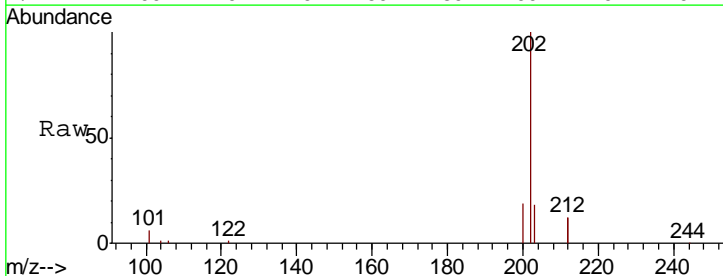
**Manual Integrations**  
**APPROVED**

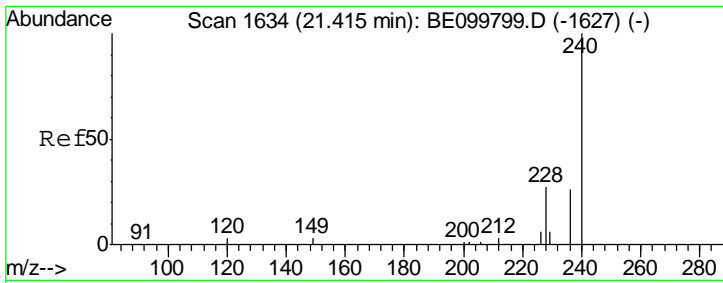
mohammad  
 6/7/2019 2:10:40 PM



#26  
 Fluoranthene  
 Concen: 0.434 ng  
 RT: 19.29 min Scan# 1397  
 Delta R.T. 0.01 min  
 Lab File: BE099820.D  
 Acq: 6 Jun 2019 13:54

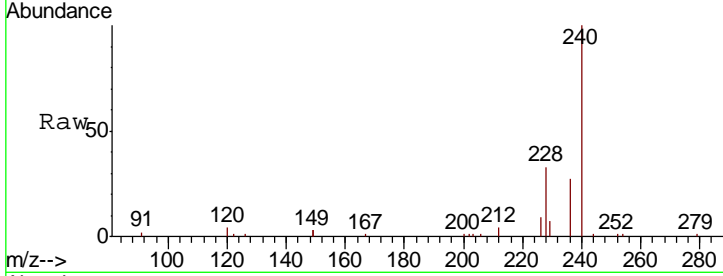
Tgt Ion	Resp	Lower	Upper
202	100		
101	6.7	5.2	7.8
203	17.0	13.6	20.4





#27  
 Chrysene-d12  
 Concen: 0.400 ng  
 RT: 21.41 min Scan# 1634  
 Delta R.T. -0.00 min  
 Lab File: BE099820.D  
 Acq: 6 Jun 2019 13:54

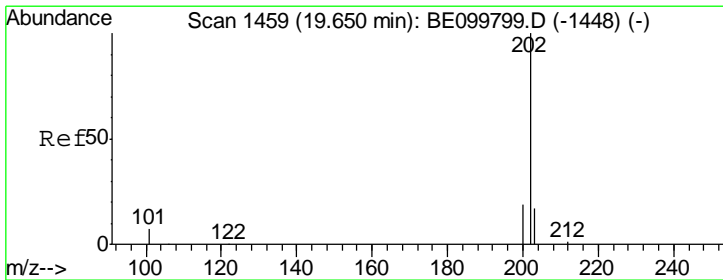
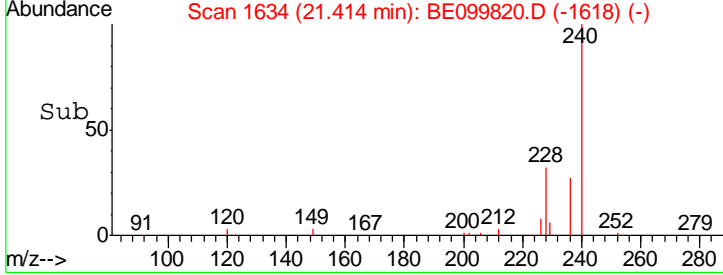
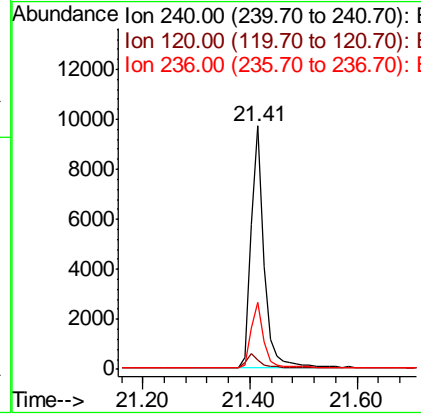
**Instrument :**  
 BNA\_E  
**ClientSampled :**  
 BPS1-TT-MW304S-20190604MS



Tgt Ion: 240 Resp: 16509

Ion	Ratio	Lower	Upper
240	100		
120	4.1	2.8	4.2
236	27.3	20.9	31.3

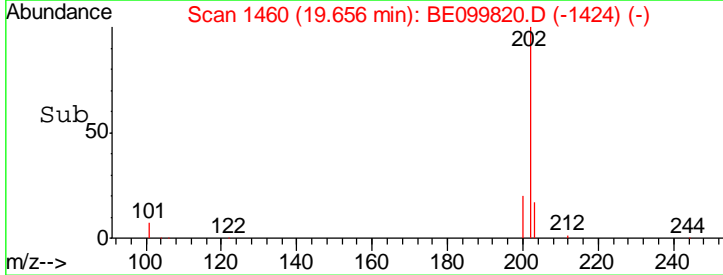
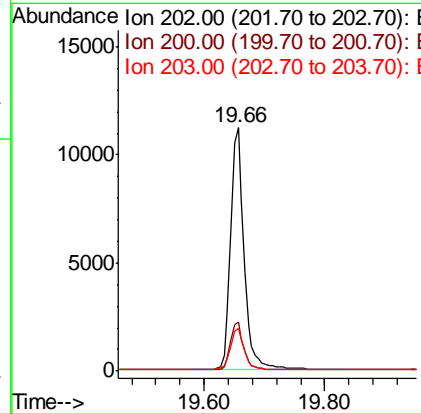
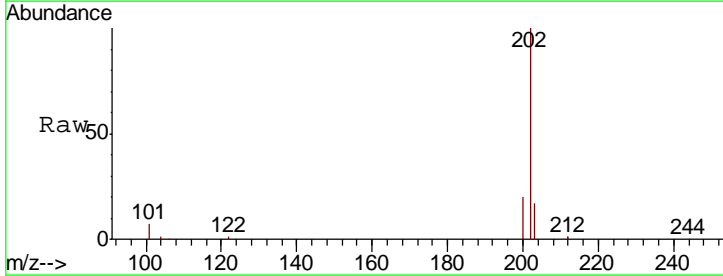
**Manual Integrations**  
**APPROVED**  
 mohammad  
 6/7/2019 2:10:40 PM



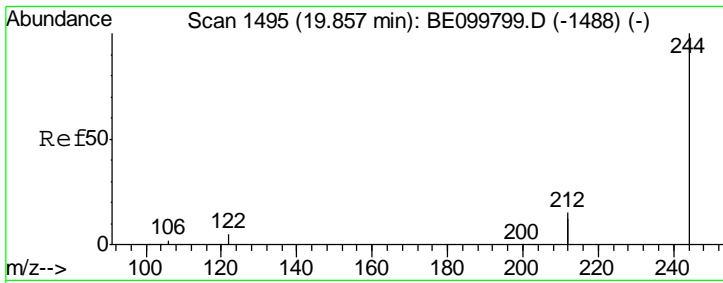
#28  
 Pyrene  
 Concen: 0.437 ng  
 RT: 19.66 min Scan# 1460  
 Delta R.T. 0.01 min  
 Lab File: BE099820.D  
 Acq: 6 Jun 2019 13:54

Tgt Ion: 202 Resp: 17444

Ion	Ratio	Lower	Upper
202	100		
200	19.5	15.6	23.4
203	17.9	14.1	21.1

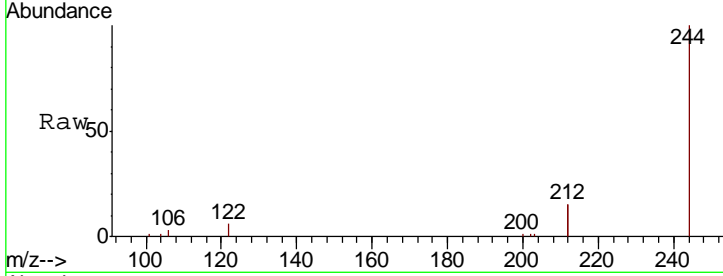






#29  
 Terphenyl-d14  
 Concen: 0.488 ng  
 RT: 19.86 min Scan# 1495  
 Delta R.T. 0.00 min  
 Lab File: BE099820.D  
 Acq: 6 Jun 2019 13:54

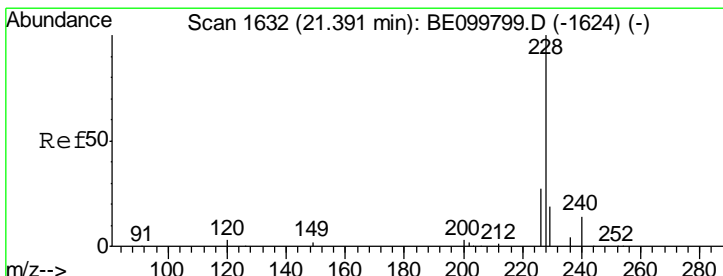
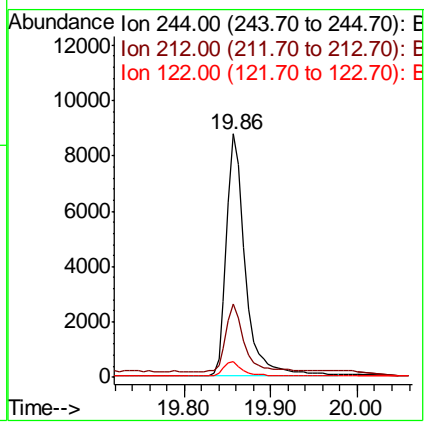
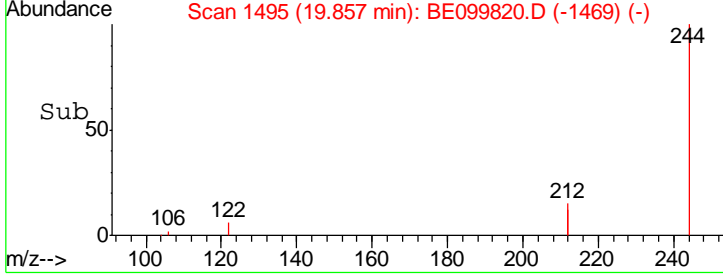
**Instrument :**  
 BNA\_E  
**ClientSampled :**  
 BPS1-TT-MW304S-20190604MS



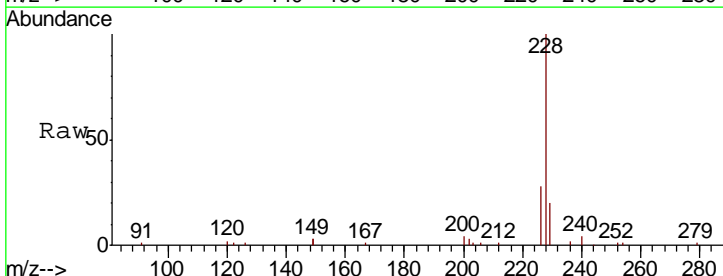
Tgt Ion: 244 Resp: 13203

Ion	Ratio	Lower	Upper
244	100		
212	29.9	23.7	35.5
122	6.3	4.8	7.2

**Manual Integrations**  
**APPROVED**  
 mohammad  
 6/7/2019 2:10:40 PM

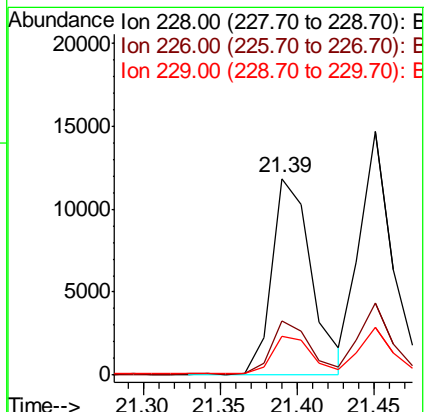
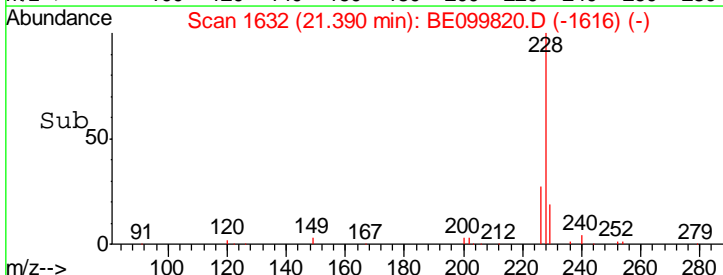


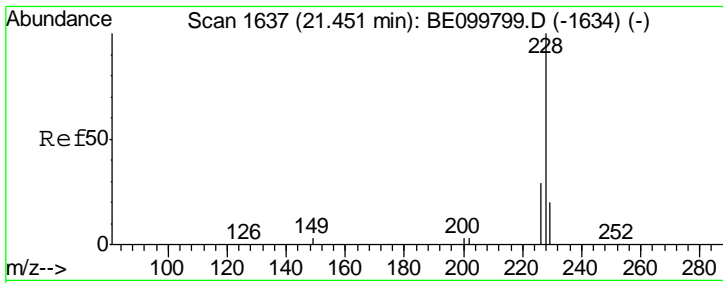
#30  
 Benzo(a)anthracene  
 Concen: 0.461 ng  
 RT: 21.39 min Scan# 1632  
 Delta R.T. -0.00 min  
 Lab File: BE099820.D  
 Acq: 6 Jun 2019 13:54



Tgt Ion: 228 Resp: 21045

Ion	Ratio	Lower	Upper
228	100		
226	27.7	21.6	32.4
229	19.6	15.8	23.6





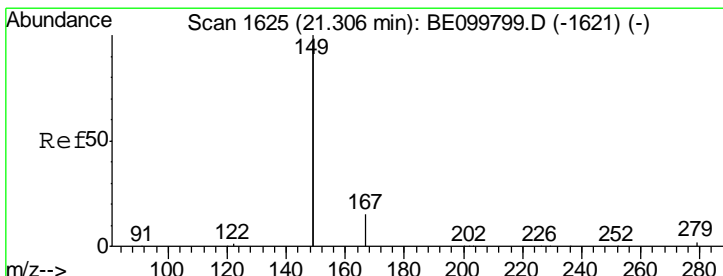
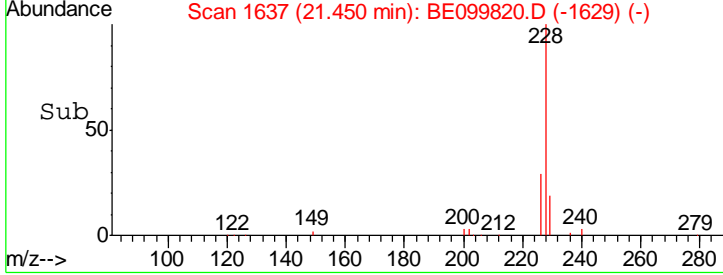
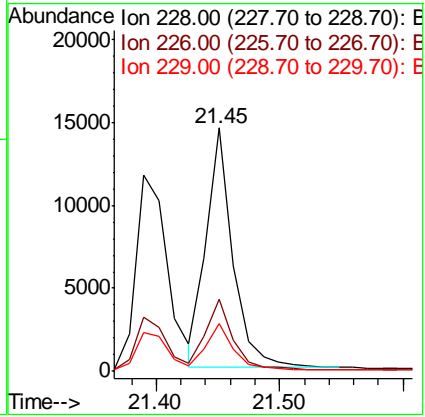
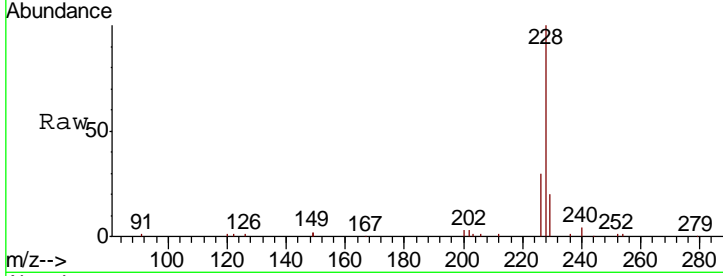
#31  
 Chrysene  
 Concen: 0.429 ng  
 RT: 21.45 min Scan# 1637  
 Delta R.T. -0.00 min  
 Lab File: BE099820.D  
 Acq: 6 Jun 2019 13:54

**Instrument :**  
 BNA\_E  
**ClientSampled :**  
 BPS1-TT-MW304S-20190604MS

Tgt Ion	Resp	Lower	Upper
228	100		
226	29.5	22.9	34.3
229	19.7	16.4	24.6

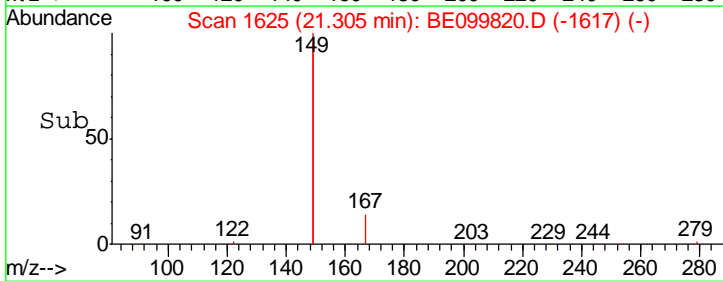
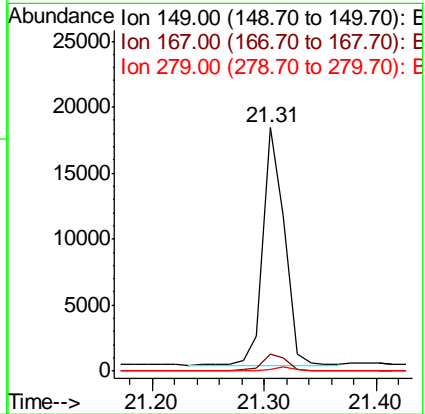
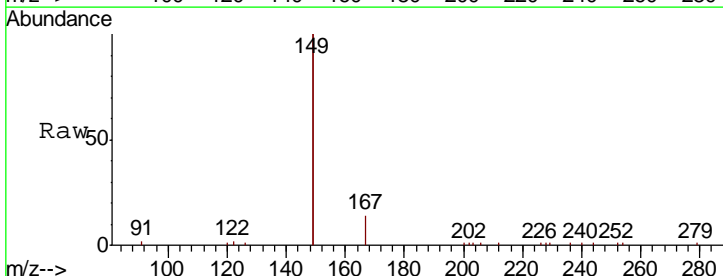
**Manual Integrations**  
**APPROVED**

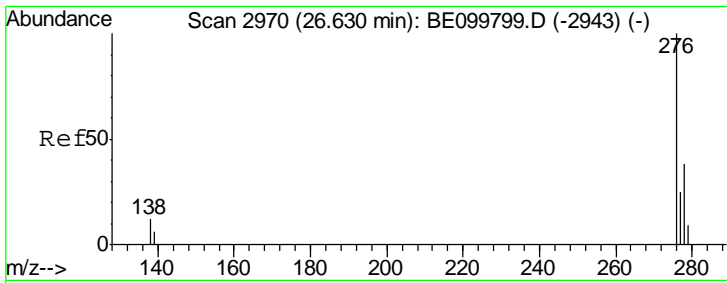
mohammad  
 6/7/2019 2:10:40 PM



#32  
 Bis(2-ethylhexyl)phthalate  
 Concen: 0.459 ng  
 RT: 21.31 min Scan# 1625  
 Delta R.T. -0.00 min  
 Lab File: BE099820.D  
 Acq: 6 Jun 2019 13:54

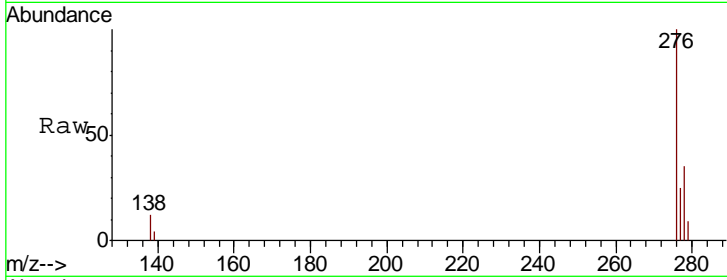
Tgt Ion	Resp	Lower	Upper
149	100		
167	7.4	6.0	9.0
279	1.5	1.2	1.8





#33  
 Indeno(1,2,3-cd)pyrene  
 Concen: 0.396 ng  
 RT: 26.64 min Scan# 2973  
 Delta R.T. 0.01 min  
 Lab File: BE099820.D  
 Acq: 6 Jun 2019 13:54

**Instrument :**  
 BNA\_E  
**ClientSampled :**  
 BPS1-TT-MW304S-20190604MS

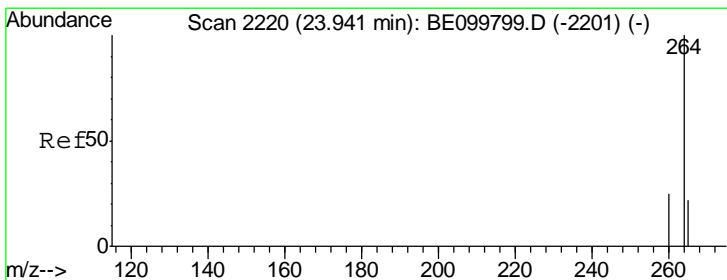
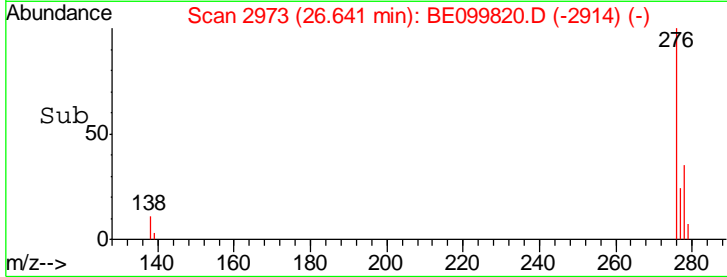
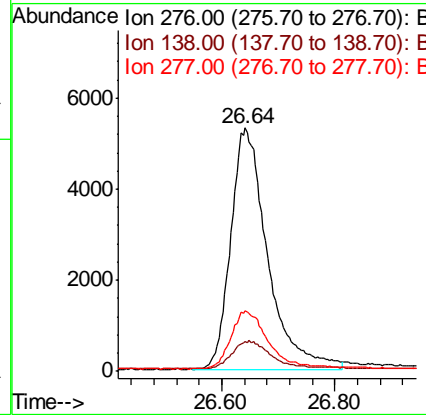


Tgt Ion: 276 Resp: 23890

Ion	Ratio	Lower	Upper
276	100		
138	12.4	10.3	15.5
277	24.1	19.4	29.2

**Manual Integrations**  
**APPROVED**

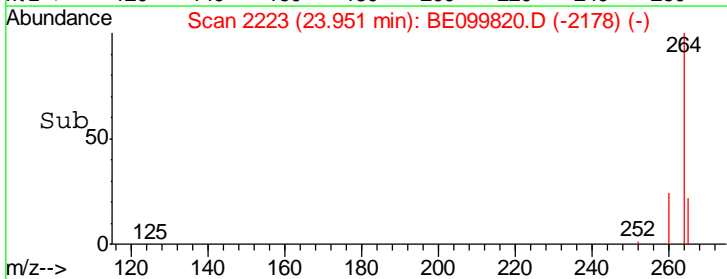
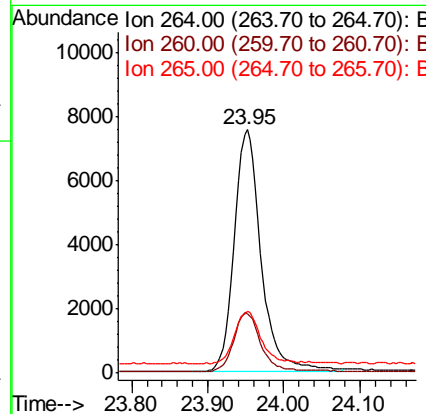
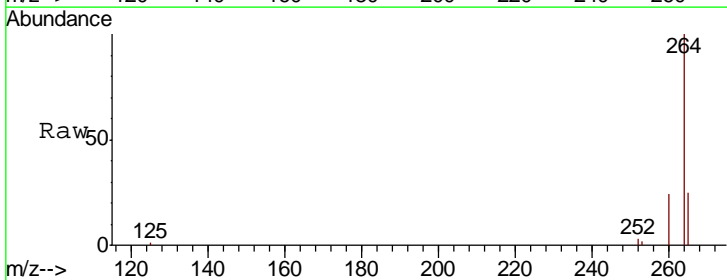
mohammad  
 6/7/2019 2:10:40 PM

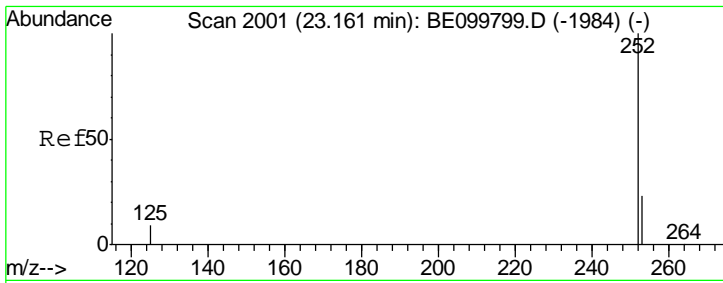


#34  
 Perylene-d12  
 Concen: 0.400 ng  
 RT: 23.95 min Scan# 2223  
 Delta R.T. 0.01 min  
 Lab File: BE099820.D  
 Acq: 6 Jun 2019 13:54

Tgt Ion: 264 Resp: 18561

Ion	Ratio	Lower	Upper
264	100		
260	24.5	20.0	30.0
265	25.3	20.7	31.1





#35  
 Benzo(b)fluoranthene  
 Concen: 0.407 ng  
 RT: 23.16 min Scan# 2002  
 Delta R.T. 0.00 min  
 Lab File: BE099820.D  
 Acq: 6 Jun 2019 13:54

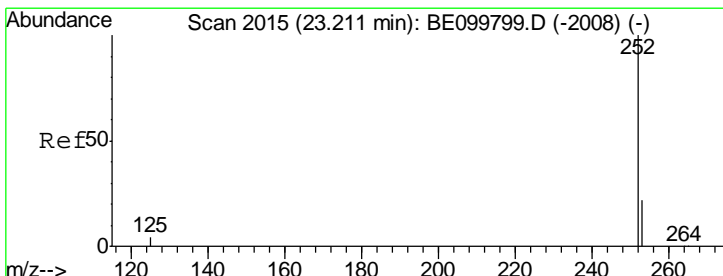
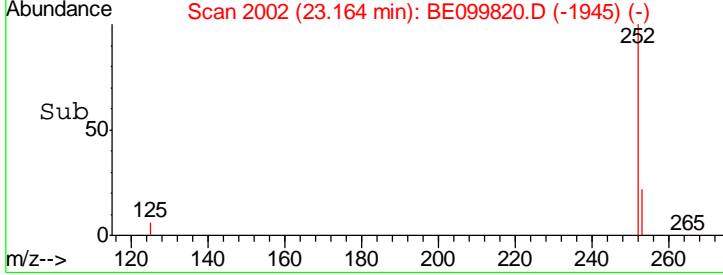
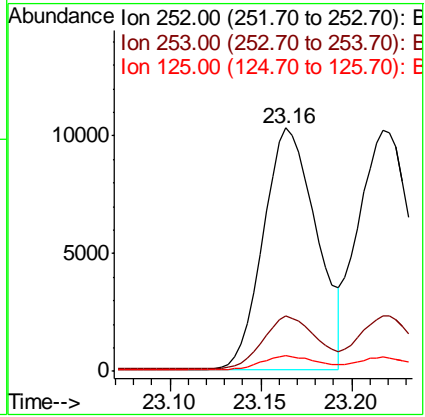
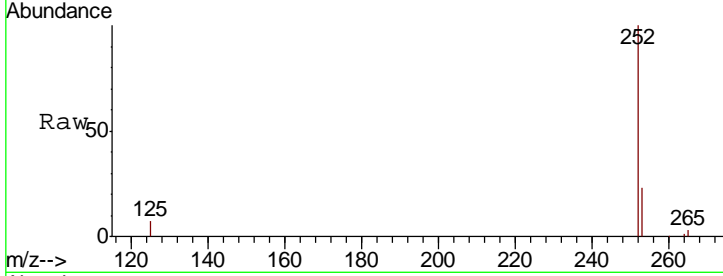
**Instrument :**  
 BNA\_E  
**ClientSampleId :**  
 BPS1-TT-MW304S-20190604MS

Tgt Ion: 252 Resp: 20911

Ion	Ratio	Lower	Upper
252	100		
253	22.8	18.9	28.3
125	6.6	7.6	11.4#

**Manual Integrations**  
**APPROVED**

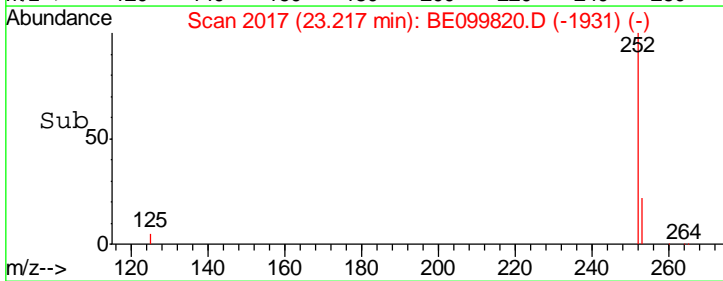
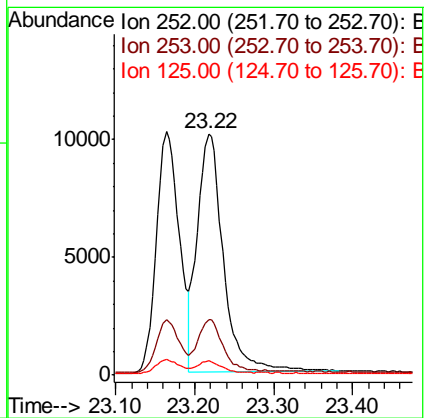
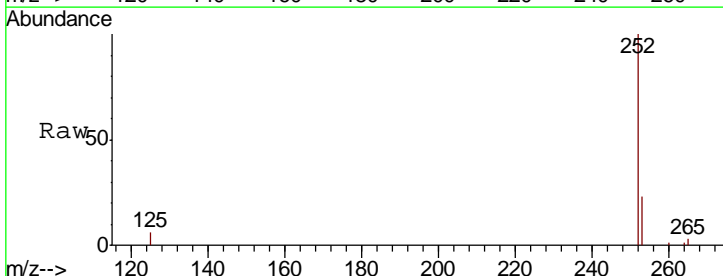
mohammad  
 6/7/2019 2:10:40 PM

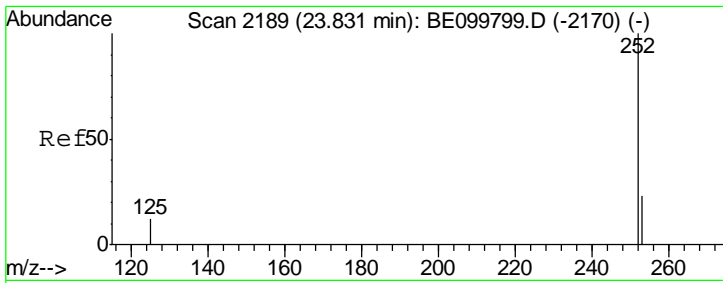


#36  
 Benzo(k)fluoranthene  
 Concen: 0.427 ng  
 RT: 23.22 min Scan# 2017  
 Delta R.T. 0.01 min  
 Lab File: BE099820.D  
 Acq: 6 Jun 2019 13:54

Tgt Ion: 252 Resp: 23286

Ion	Ratio	Lower	Upper
252	100		
253	22.8	18.4	27.6
125	5.8	4.6	7.0



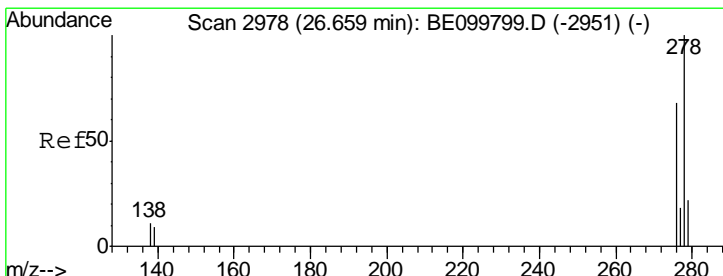
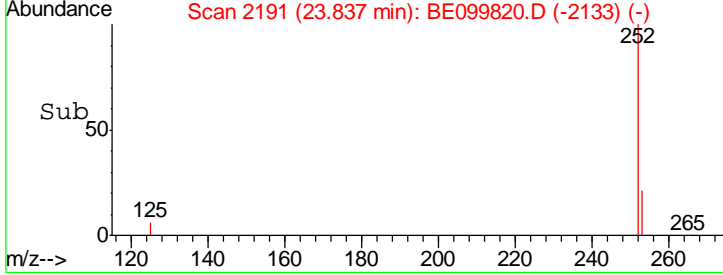
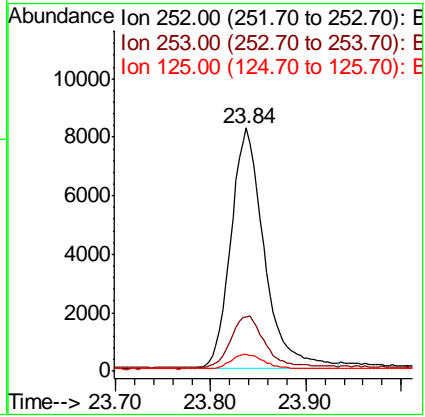
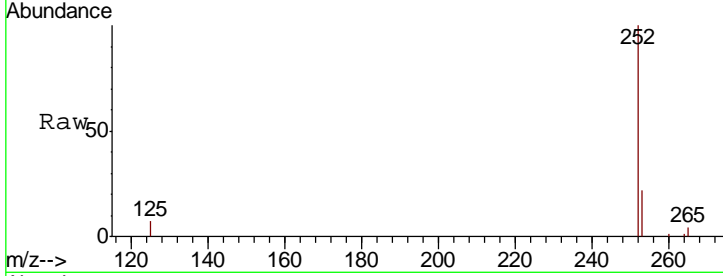


#37  
 Benzo(a)pyrene  
 Concen: 0.401 ng  
 RT: 23.84 min Scan# 2191  
 Delta R.T. 0.01 min  
 Lab File: BE099820.D  
 Acq: 6 Jun 2019 13:54

**Instrument :**  
 BNA\_E  
**ClientSampleId :**  
 BPS1-TT-MW304S-20190604MS

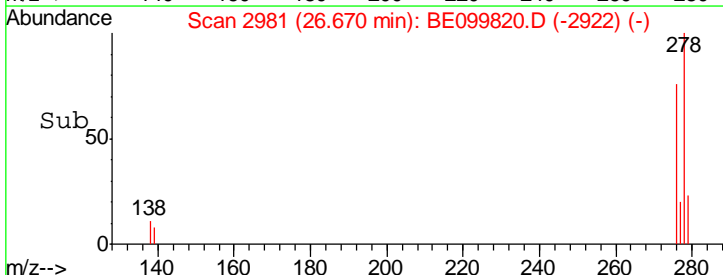
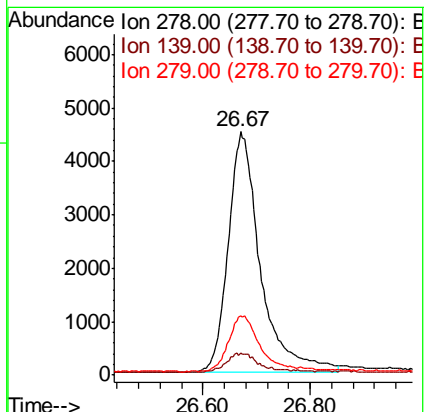
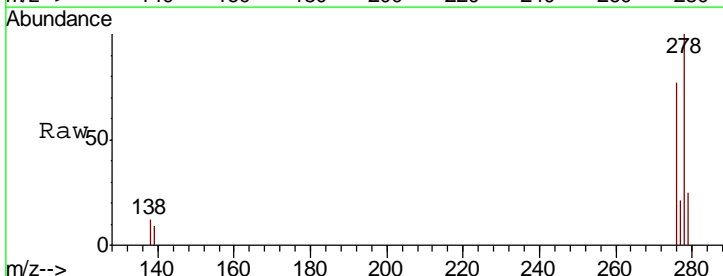
Tgt Ion	Resp	Lower	Upper
252	19988		
253	22.1	19.3	28.9
125	6.9	10.2	15.4#

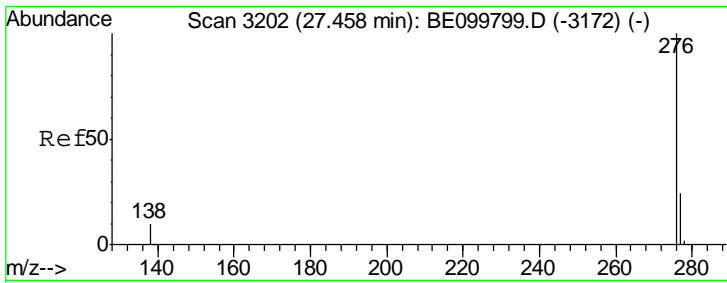
**Manual Integrations**  
**APPROVED**  
 mohammad  
 6/7/2019 2:10:40 PM



#38  
 Dibenzo(a,h)anthracene  
 Concen: 0.371 ng  
 RT: 26.67 min Scan# 2981  
 Delta R.T. 0.01 min  
 Lab File: BE099820.D  
 Acq: 6 Jun 2019 13:54

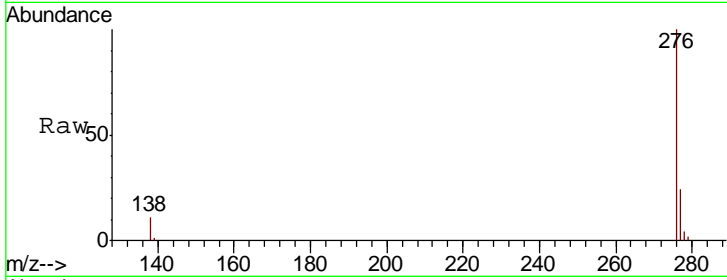
Tgt Ion	Resp	Lower	Upper
278	18822		
139	9.1	7.9	11.9
279	24.6	18.5	27.7





#39  
 Benzo(a,h,i)perylene  
 Concen: 0.397 ng  
 RT: 27.47 min Scan# 3205  
 Delta R.T. 0.01 min  
 Lab File: BE099820.D  
 Acq: 6 Jun 2019 13:54

**Instrument :**  
 BNA\_E  
**ClientSampled :**  
 BPS1-TT-MW304S-20190604MS



Tot Ion: 276 Resp: 21143

Ion	Ratio	Lower	Upper
276	100		
277	24.4	19.6	29.4
138	10.8	9.0	13.4

**Manual Integrations**  
**APPROVED**  
 mohammad  
 6/7/2019 2:10:40 PM

