

Data Path : Z:\SVOASRV\HPCHEM1\BNA E\DATA\BE061119\
 Data File : BE099921.D
 Acq On : 11 Jun 2019 13:17
 Operator : JU/SJ
 Sample : K3257-09
 Misc :
 ALS Vial : 10 Sample Multiplier: 1

Instrument :
 BNA_E
 ClientSampleId :
 DUP03-20190606

Quant Time: Jun 12 04:12:35 2019
 Quant Method : Z:\SVOASRV\HPCHEM1\BNA E\METHODS\8270-SIM-BE061019.M
 Quant Title : ASP BNA STANDARDS FOR 5 POINT CALIBRATION
 QLast Update : Mon Jun 10 14:57:20 2019
 Response via : Initial Calibration

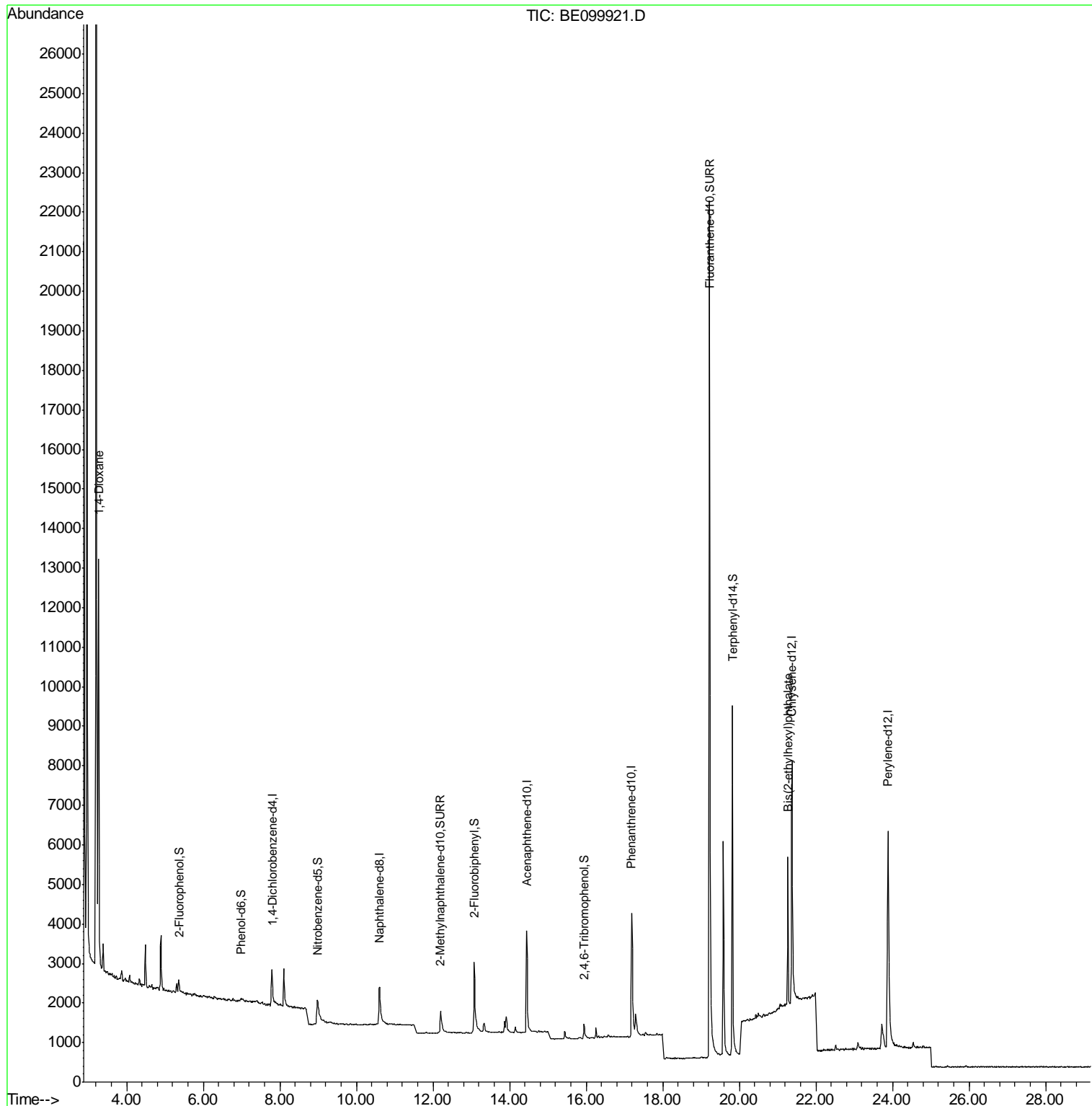
Internal Standards	R.T.	QIon	Response	Conc	Units	Dev(Min)
1) 1,4-Dichlorobenzene-d4	7.79	152	631	0.40	ng	0.00
7) Naphthalene-d8	10.60	136	2297	0.40	ng	0.00
13) Acenaphthene-d10	14.44	164	1963	0.40	ng	-0.03
19) Phenanthrene-d10	17.19	188	6165	0.40	ng	-0.03
27) Chrysene-d12	21.38	240	9599	0.40	ng	-0.02
34) Perylene-d12	23.88	264	10977	0.40	ng	-0.05
System Monitoring Compounds						
4) 2-Fluorophenol	5.36	112	287	0.17	ng	0.00
5) Phenol-d6	6.97	99	171	0.08	ng	0.00
8) Nitrobenzene-d5	8.98	82	764	0.35	ng	0.01
11) 2-Methylnaphthalene-d10	12.20	152	1527	0.38	ng	-0.01
14) 2,4,6-Tribromophenol	15.94	330	380	0.26	ng	-0.03
15) 2-Fluorobiphenyl	13.07	172	3001	0.40	ng	-0.03
25) Fluoranthene-d10	19.22	212	37679	0.42	ng	-0.03
29) Terphenyl-d14	19.82	244	9830	0.57	ng	-0.03
Target Compounds						
2) 1,4-Dioxane	3.27	88	8587	9.195	ng	95
32) Bis(2-ethylhexyl)phthalate	21.27	149	4399	0.107	ng	99

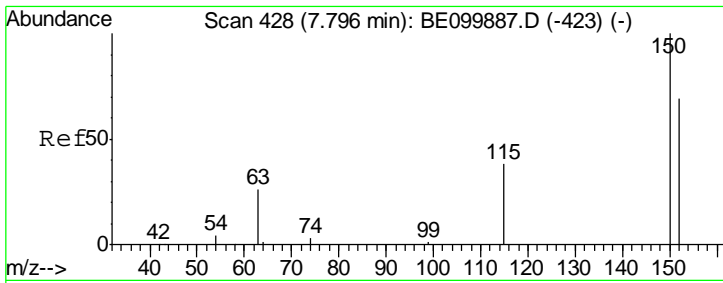
(#) = qualifier out of range (m) = manual integration (+) = signals summed

Data Path : Z:\SVOASRV\HPCHEM1\BNA E\DATA\BE061119\
 Data File : BE099921.D
 Acq On : 11 Jun 2019 13:17
 Operator : JU/SJ
 Sample : K3257-09
 Misc :
 ALS Vial : 10 Sample Multiplier: 1

Instrument :
 BNA_E
 ClientSampled :
 DUP03-20190606

Quant Time: Jun 12 04:12:35 2019
 Quant Method : Z:\SVOASRV\HPCHEM1\BNA E\METHODS\8270-SIM-BE061019.M
 Quant Title : ASP BNA STANDARDS FOR 5 POINT CALIBRATION
 QLast Update : Mon Jun 10 14:57:20 2019
 Response via : Initial Calibration

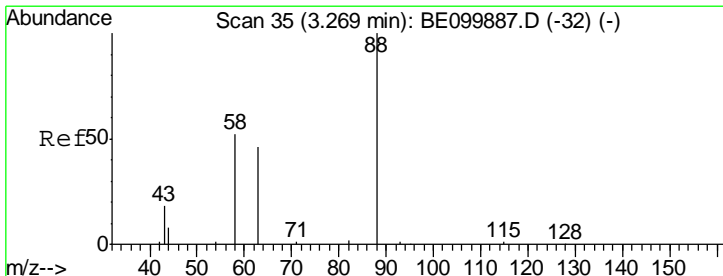
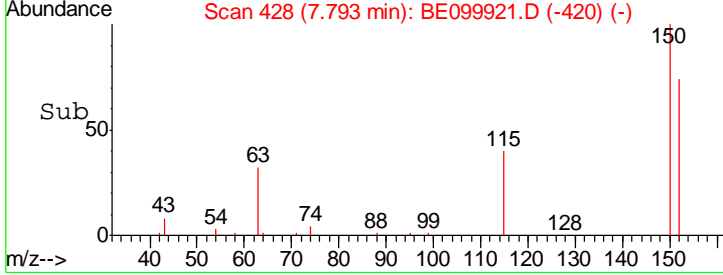
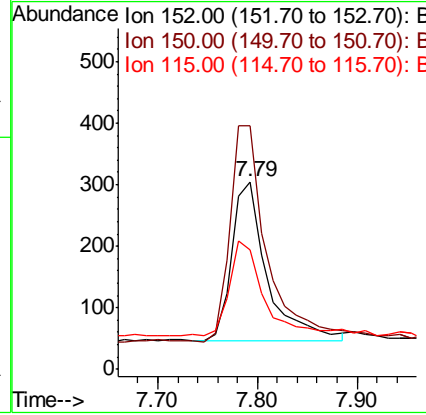
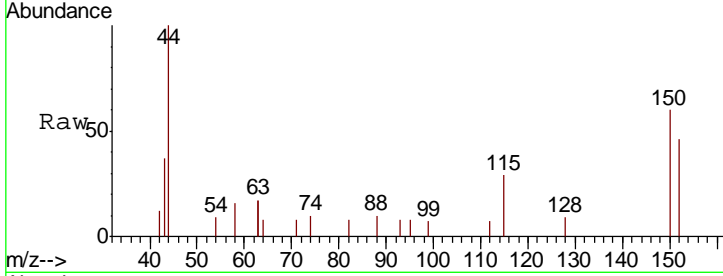




#1
 1,4-Dichlorobenzene-d4
 Concen: 0.400 ng
 RT: 7.79 min Scan# 428
 Delta R.T. -0.00 min
 Lab File: BE099921.D
 Acq: 11 Jun 2019 13:17

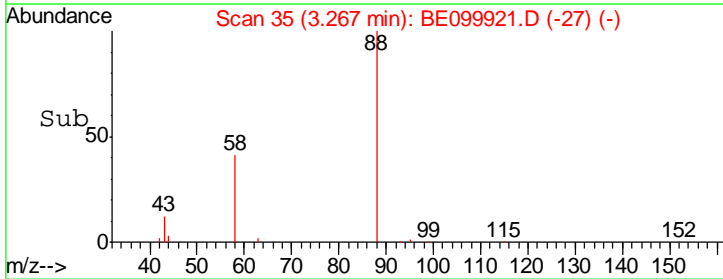
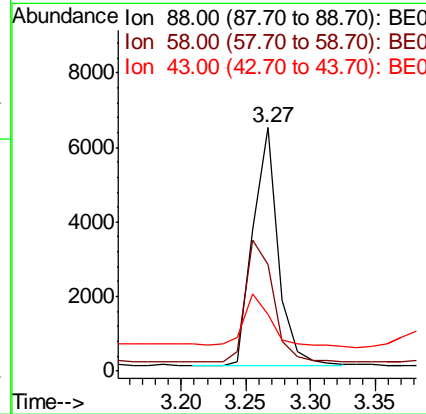
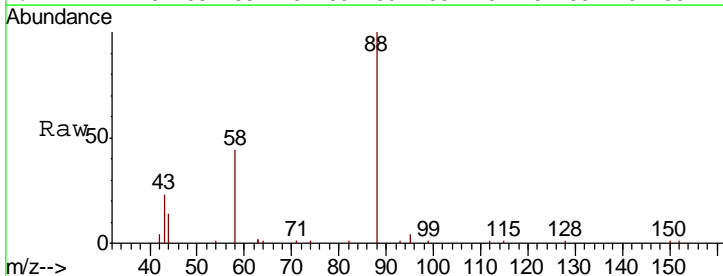
Instrument :
 BNA_E
ClientSampled :
 DUP03-20190606

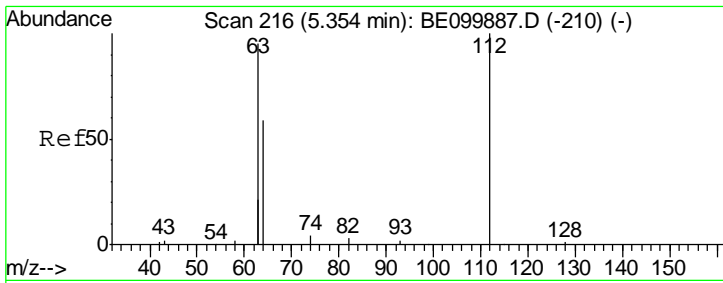
Tgt Ion	Resp	Lower	Upper
152	631		
150	129.8	111.0	166.6
115	63.6	50.7	76.1



#2
 1,4-Dioxane
 Concen: 9.195 ng
 RT: 3.27 min Scan# 35
 Delta R.T. -0.00 min
 Lab File: BE099921.D
 Acq: 11 Jun 2019 13:17

Tgt Ion	Resp	Lower	Upper
88	8587		
58	56.0	48.8	73.2
43	22.7	19.0	28.6

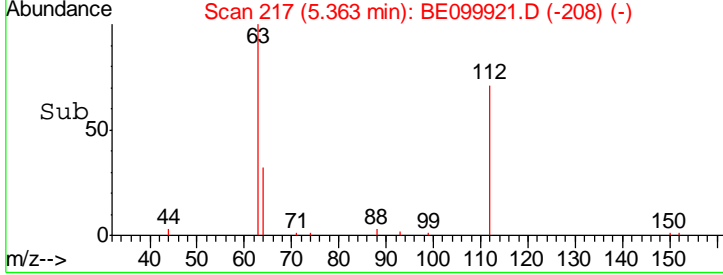
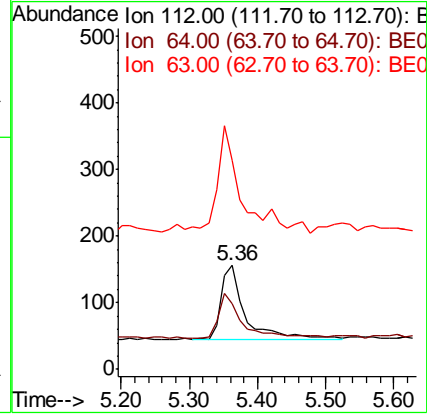
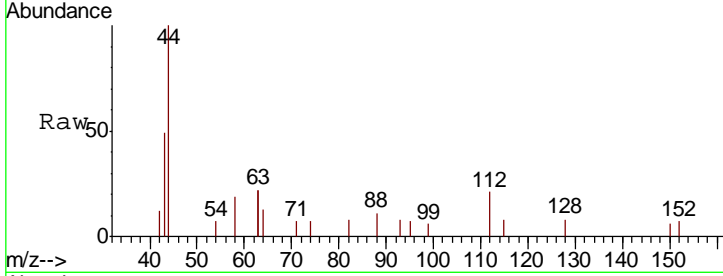




#4
 2-Fluorophenol
 Concen: 0.168 ng
 RT: 5.36 min Scan# 217
 Delta R.T. 0.01 min
 Lab File: BE099921.D
 Acq: 11 Jun 2019 13:17

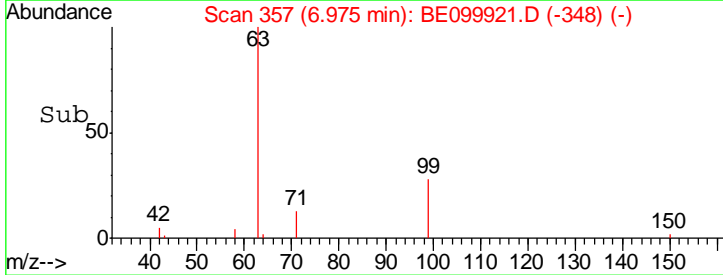
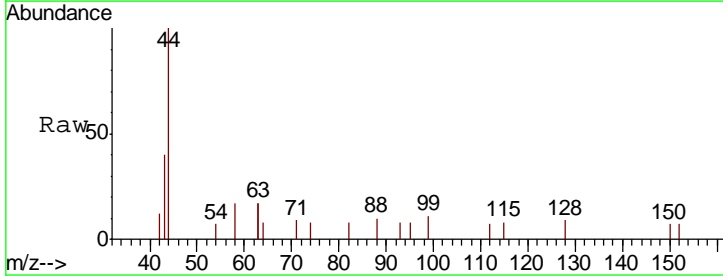
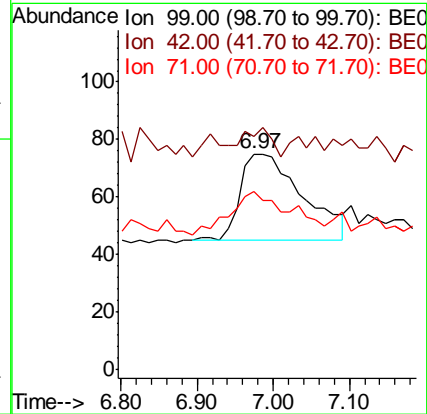
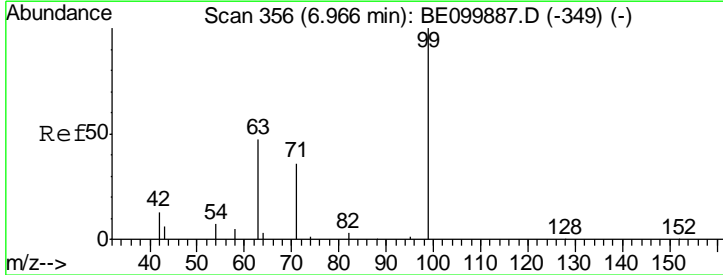
Instrument :
 BNA_E
ClientSampled :
 DUP03-20190606

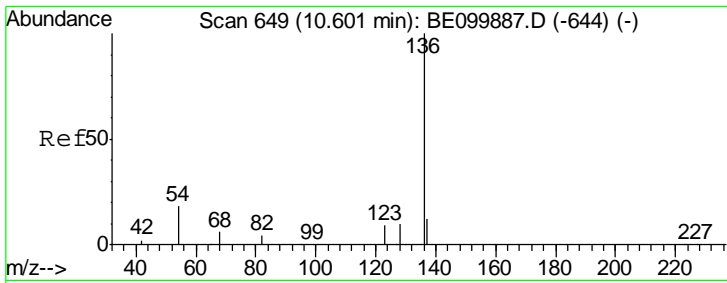
Tgt Ion	Resp	Lower	Upper
112	287		
64	56.8	44.1	66.1
63	115.0	87.8	131.6



#5
 Phenol-d6
 Concen: 0.078 ng
 RT: 6.97 min Scan# 357
 Delta R.T. 0.01 min
 Lab File: BE099921.D
 Acq: 11 Jun 2019 13:17

Tgt Ion	Resp	Lower	Upper
99	171		
42	12.9	15.9	23.9#
71	48.0	34.6	52.0

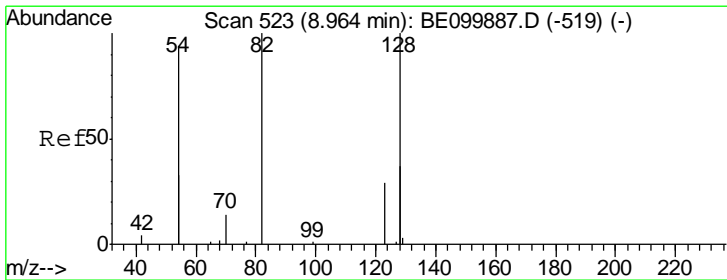
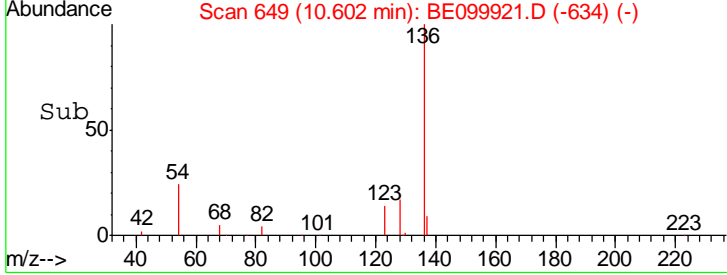
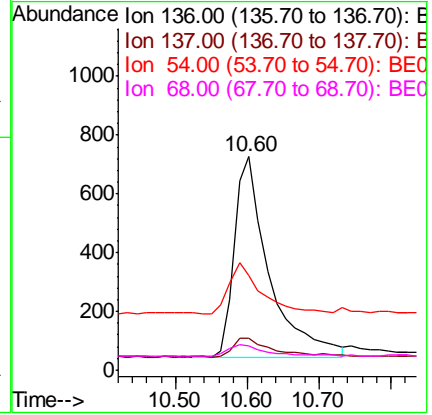
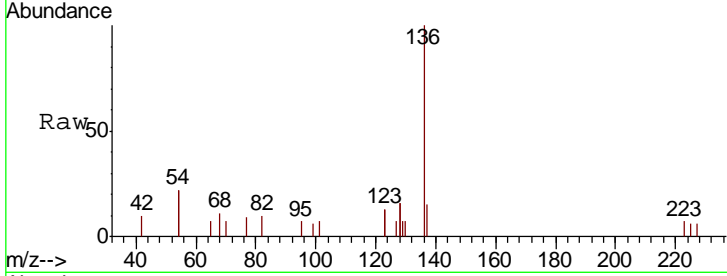




#7
 Naphthalene-d8
 Concen: 0.400 ng
 RT: 10.60 min Scan# 649
 Delta R.T. 0.00 min
 Lab File: BE099921.D
 Acq: 11 Jun 2019 13:17

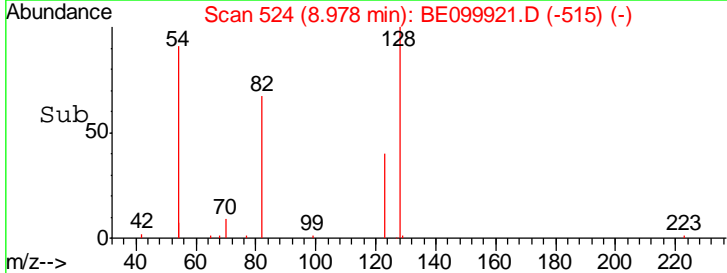
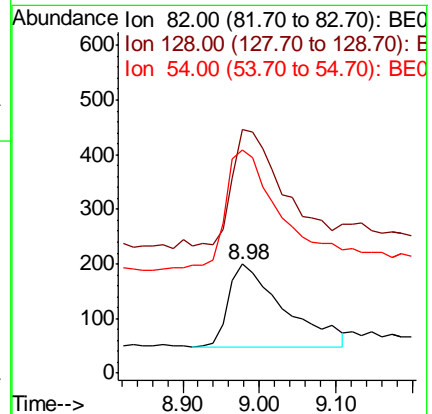
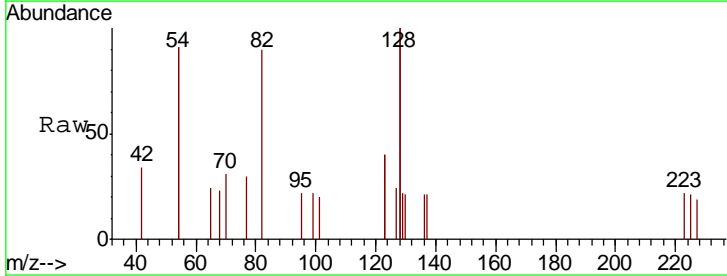
Instrument :
 BNA_E
ClientSampleId :
 DUP03-20190606

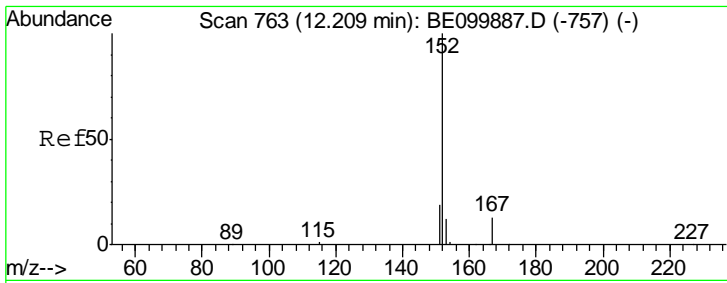
Tgt Ion	Resp	Lower	Upper
136	100		
137	15.1	12.3	18.5
54	44.3	28.2	42.4#
68	11.1	7.8	11.8



#8
 Nitrobenzene-d5
 Concen: 0.351 ng
 RT: 8.98 min Scan# 524
 Delta R.T. 0.01 min
 Lab File: BE099921.D
 Acq: 11 Jun 2019 13:17

Tgt Ion	Resp	Lower	Upper
82	100		
128	223.0	137.3	205.9#
54	204.0	129.7	194.5#

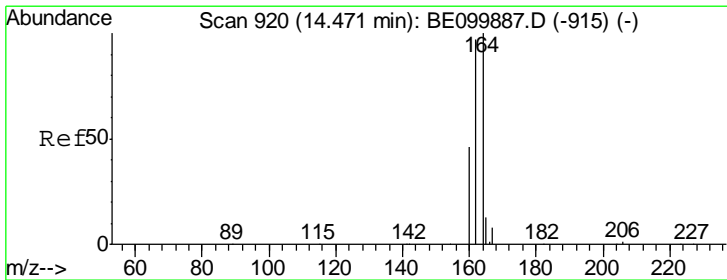
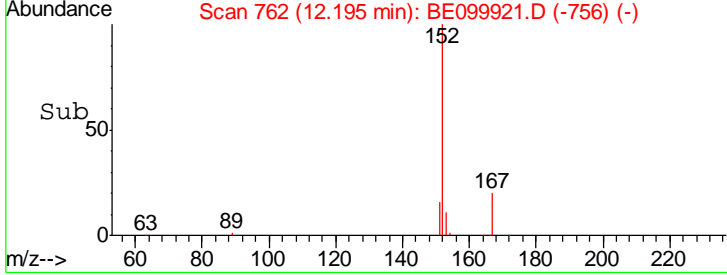
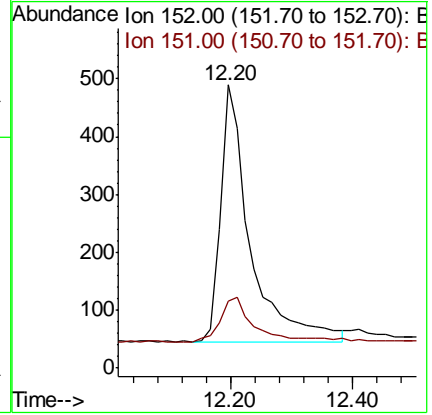
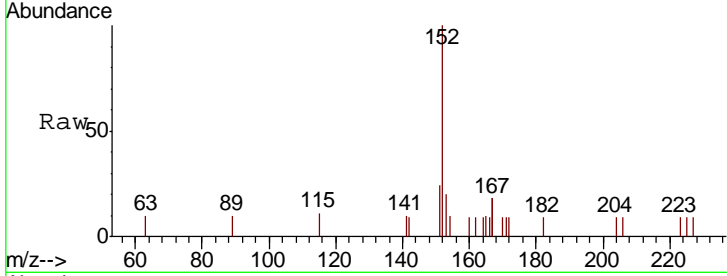




#11
 2-Methylnaphthalene-d10
 Concen: 0.381 ng
 RT: 12.20 min Scan# 762
 Delta R.T. -0.01 min
 Lab File: BE099921.D
 Acq: 11 Jun 2019 13:17

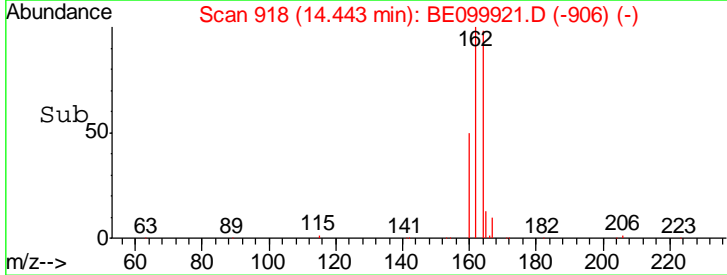
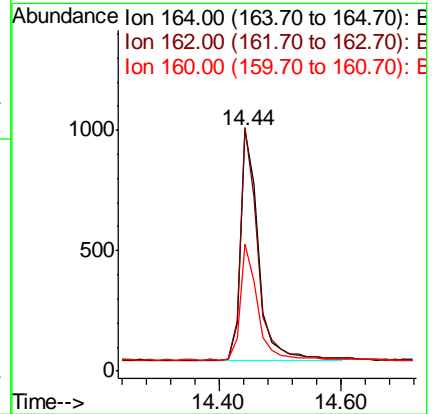
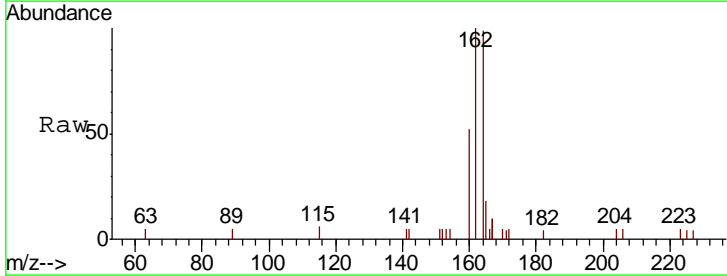
Instrument :
 BNA_E
 ClientSampleId :
 DUP03-20190606

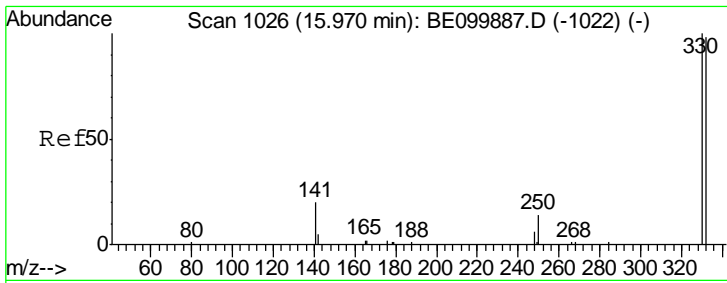
Tgt Ion	Resp	Lower	Upper
152	1527		
151	20.8	15.2	22.8



#13
 Acenaphthene-d10
 Concen: 0.400 ng
 RT: 14.44 min Scan# 918
 Delta R.T. -0.03 min
 Lab File: BE099921.D
 Acq: 11 Jun 2019 13:17

Tgt Ion	Resp	Lower	Upper
164	1963		
162	101.2	77.8	116.8
160	53.1	38.2	57.4

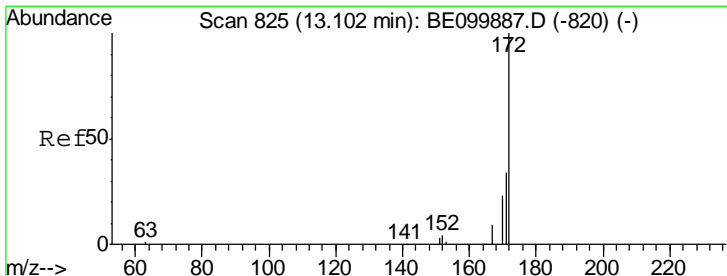
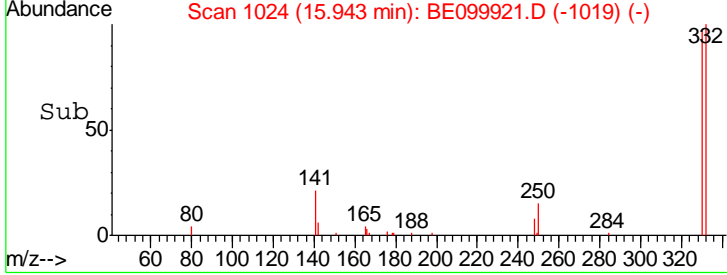
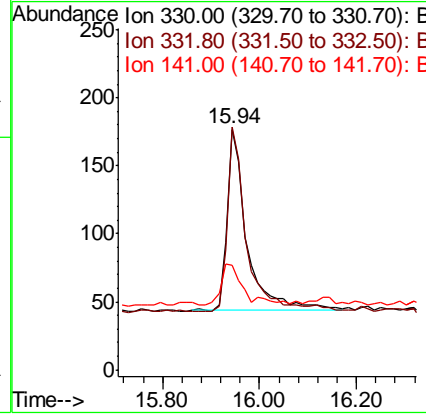
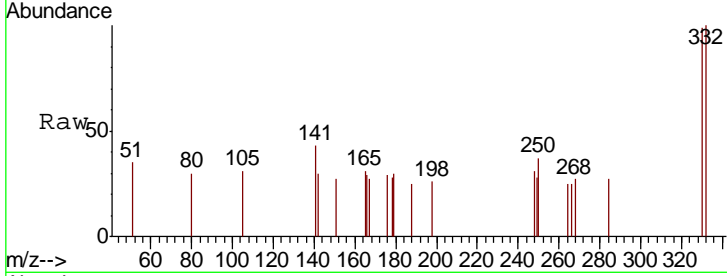




#14
 2,4,6-Tribromophenol
 Concen: 0.262 ng
 RT: 15.94 min Scan# 1024
 Delta R.T. -0.03 min
 Lab File: BE099921.D
 Acq: 11 Jun 2019 13:17

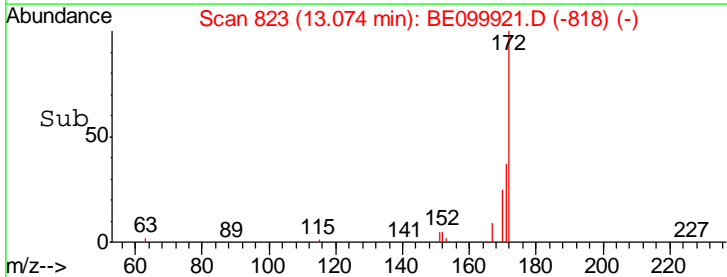
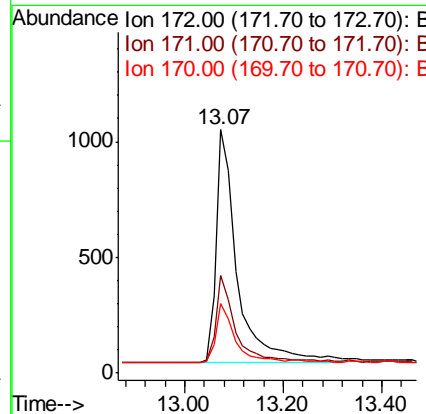
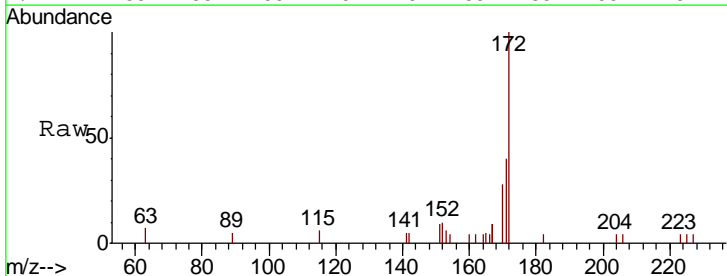
Instrument :
 BNA_E
 ClientSampleId :
 DUP03-20190606

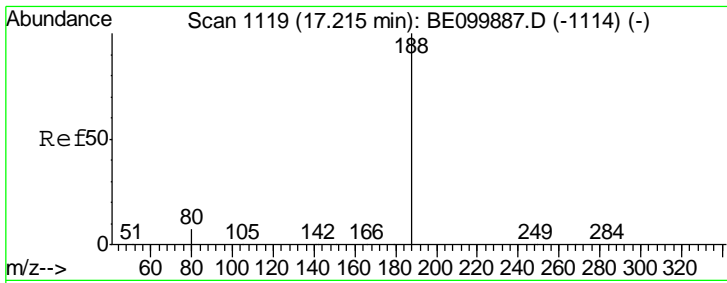
Tgt Ion	Resp	Lower	Upper
330	380		
332	100	76.7	115.1
141	25.0	21.0	31.6



#15
 2-Fluorobiphenyl
 Concen: 0.403 ng
 RT: 13.07 min Scan# 823
 Delta R.T. -0.03 min
 Lab File: BE099921.D
 Acq: 11 Jun 2019 13:17

Tgt Ion	Resp	Lower	Upper
172	3001		
171	100	29.2	43.8
170	40.1	21.2	31.8

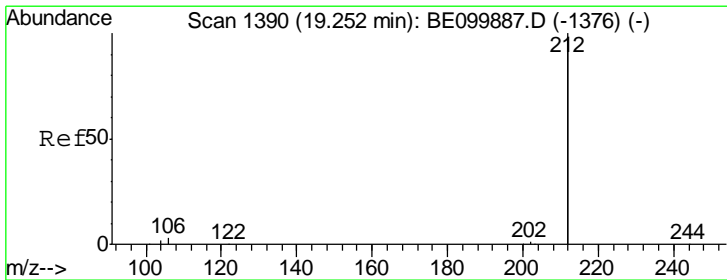
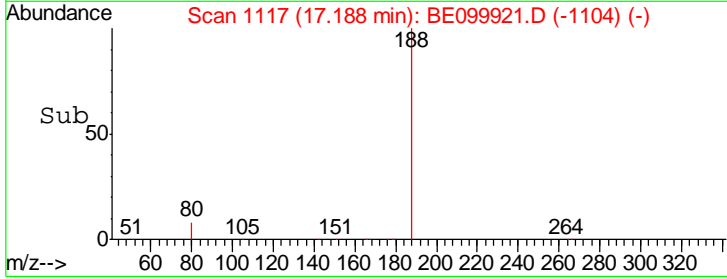
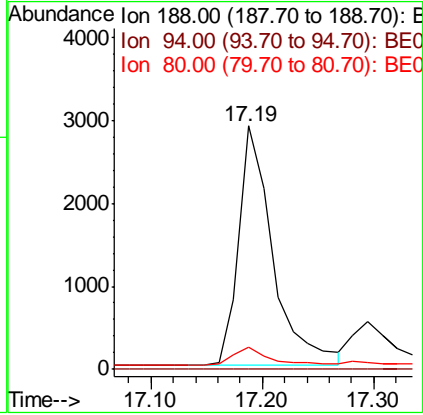
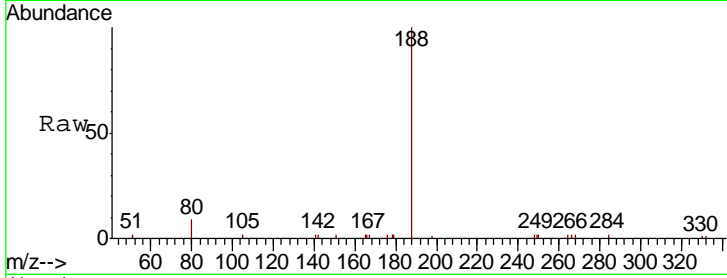




#19
 Phenanthrene-d10
 Concen: 0.400 ng
 RT: 17.19 min Scan# 1117
 Delta R.T. -0.03 min
 Lab File: BE099921.D
 Acq: 11 Jun 2019 13:17

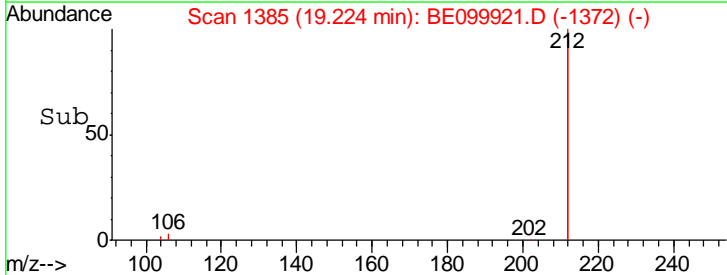
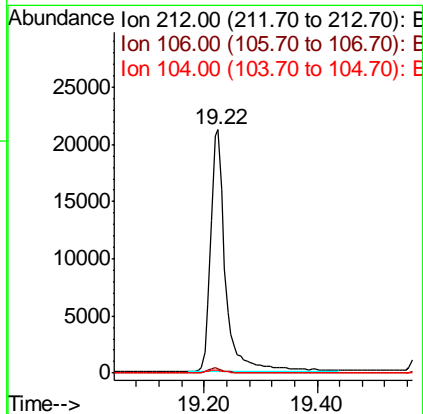
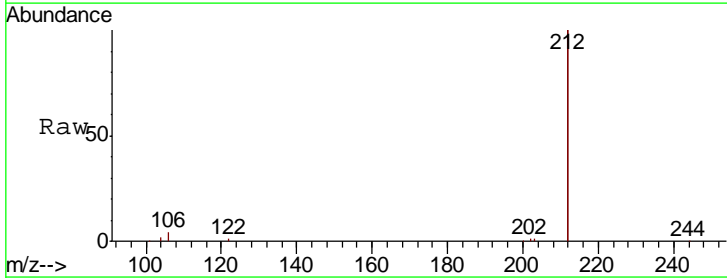
Instrument :
 BNA_E
 ClientSampleId :
 DUP03-20190606

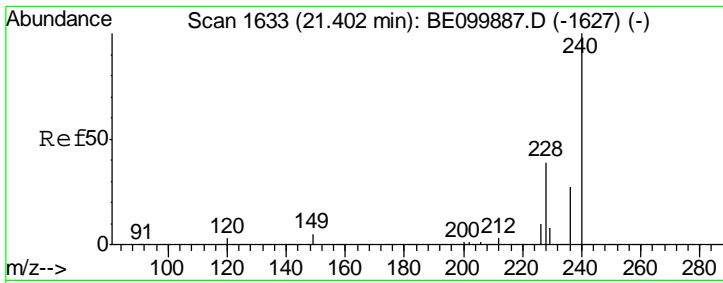
Tgt Ion	Resp	Lower	Upper
188	6165		
94	0.0	0.0	0.0
80	9.2	6.4	9.6



#25
 Fluoranthene-d10
 Concen: 0.419 ng
 RT: 19.22 min Scan# 1385
 Delta R.T. -0.03 min
 Lab File: BE099921.D
 Acq: 11 Jun 2019 13:17

Tgt Ion	Resp	Lower	Upper
212	37679		
106	1.9	1.4	2.2
104	1.1	0.9	1.3

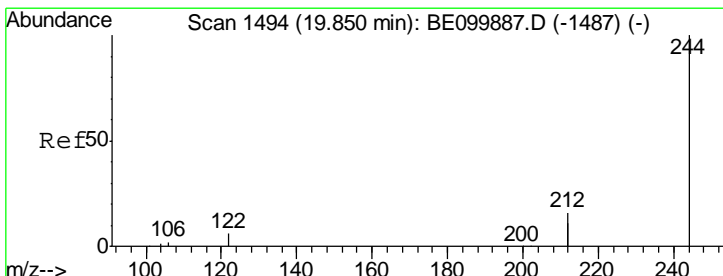
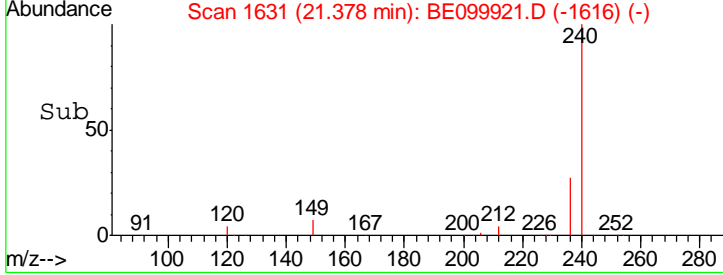
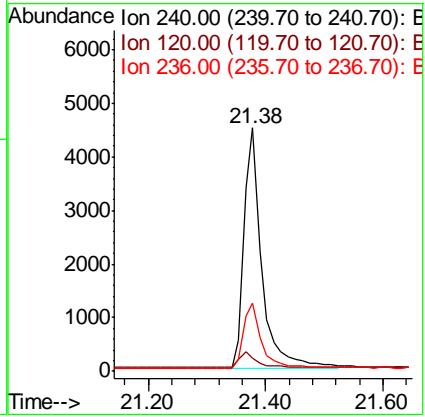
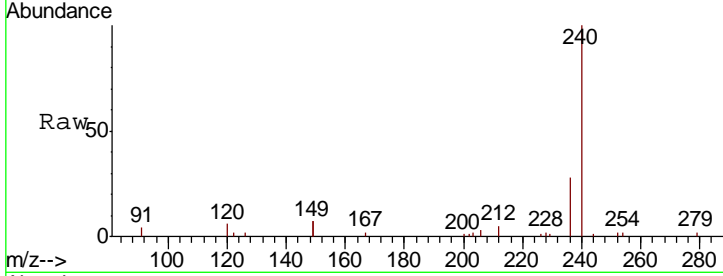




#27
 Chrysene-d12
 Concen: 0.400 ng
 RT: 21.38 min Scan# 1631
 Delta R.T. -0.02 min
 Lab File: BE099921.D
 Acq: 11 Jun 2019 13:17

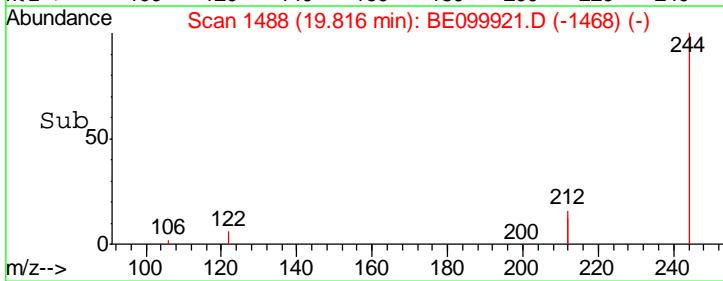
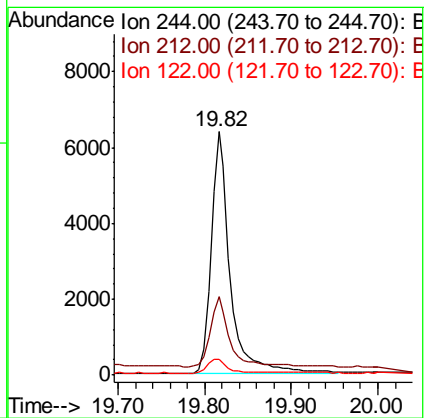
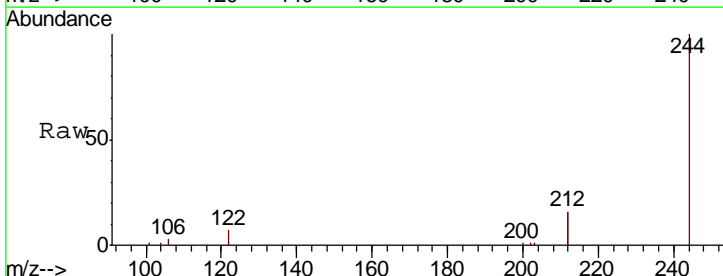
Instrument :
 BNA_E
 ClientSampleId :
 DUP03-20190606

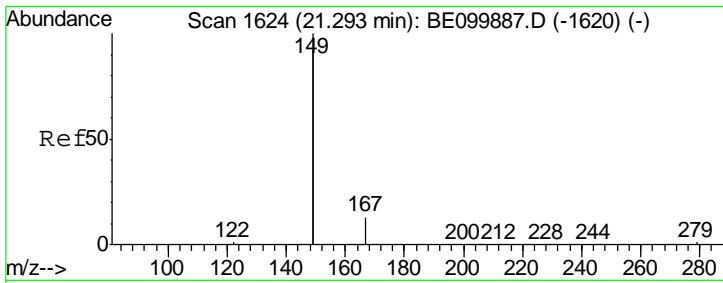
Tgt Ion	Resp	Lower	Upper
240	100		
120	5.5	3.8	5.6
236	28.1	22.0	33.0



#29
 Terphenyl-d14
 Concen: 0.569 ng
 RT: 19.82 min Scan# 1488
 Delta R.T. -0.03 min
 Lab File: BE099921.D
 Acq: 11 Jun 2019 13:17

Tgt Ion	Resp	Lower	Upper
244	100		
212	32.5	25.7	38.5
122	6.7	5.5	8.3

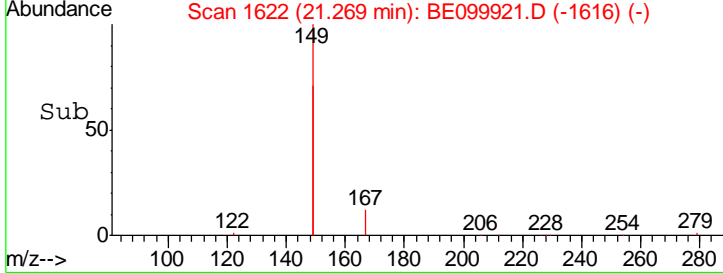
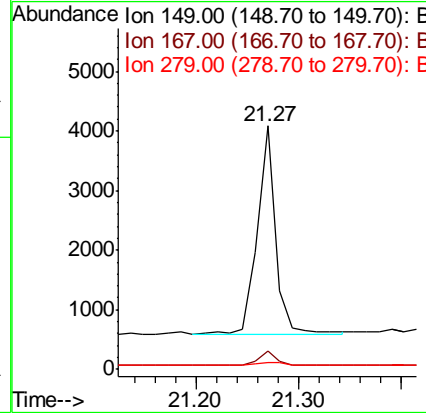
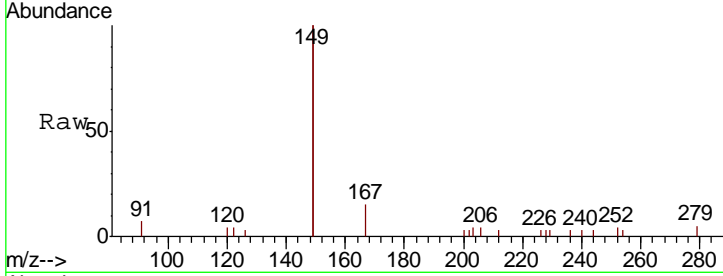




#32
 Bis(2-ethylhexyl)phthalate
 Concen: 0.107 ng
 RT: 21.27 min Scan# 1622
 Delta R.T. -0.02 min
 Lab File: BE099921.D
 Acq: 11 Jun 2019 13:17

Instrument :
 BNA_E
 ClientSampleID :
 DUP03-20190606

Tgt Ion	Resp	Lower	Upper
149	4399		
167	7.0	5.9	8.9
279	1.5	1.2	1.8



#34
 Perylene-d12
 Concen: 0.400 ng
 RT: 23.88 min Scan# 2203
 Delta R.T. -0.05 min
 Lab File: BE099921.D
 Acq: 11 Jun 2019 13:17

Tgt Ion	Resp	Lower	Upper
264	10977		
260	25.7	20.2	30.2
265	30.6	22.0	33.0

