

Data Path : Z:\SVOASRV\HPCHEM1\BNA E\DATA\BE061219\
 Data File : BE099958.D
 Acq On : 12 Jun 2019 16:12
 Operator : JU/SJ
 Sample : SSTDCCC0.4
 Misc :
 ALS Vial : 2 Sample Multiplier: 1

Instrument :
 BNA_E
Client Sampled :
 SSTDCCC0.4EC

Manual Integrations
APPROVED
 mohammad
 6/14/2019 8:44:55 AM

Quant Time: Jun 13 05:06:51 2019
 Quant Method : Z:\SVOASRV\HPCHEM1\BNA E\METHODS\8270-SIM-BE061019.M
 Quant Title : ASP BNA STANDARDS FOR 5 POINT CALIBRATION
 QLast Update : Mon Jun 10 14:57:20 2019
 Response via : Initial Calibration

Internal Standards	R.T.	QIon	Response	Conc	Units	Dev(Min)
1) 1,4-Dichlorobenzene-d4	7.79	152	851	0.40	ng	0.00
7) Naphthalene-d8	10.60	136	3084	0.40	ng	0.00
13) Acenaphthene-d10	14.47	164	2264	0.40	ng	0.00
19) Phenanthrene-d10	17.21	188	6821	0.40	ng	0.00
27) Chrysene-d12	21.40	240	8573	0.40	ng	0.00
34) Perylene-d12	23.93	264	9575	0.40	ng	0.00

System Monitoring Compounds	R.T.	QIon	Response	Conc	Units	Dev(Min)
4) 2-Fluorophenol	5.36	112	864	0.38	ng	0.00
5) Phenol-d6	6.96	99	1094	0.37	ng	0.00
8) Nitrobenzene-d5	8.96	82	1150	0.39	ng	0.00
11) 2-Methylnaphthalene-d10	12.21	152	2222	0.41	ng	0.00
14) 2,4,6-Tribromophenol	15.97	330	457	0.27	ng	0.00
15) 2-Fluorobiphenyl	13.10	172	3584	0.42	ng	0.00
25) Fluoranthene-d10	19.25	212	36860	0.37	ng	0.00
29) Terphenyl-d14	19.85	244	6901	0.45	ng	0.00

Target Compounds	R.T.	QIon	Response	Conc	Units	Qvalue
2) 1,4-Dioxane	3.27	88	482	0.383	ng	95
3) n-Nitrosodimethylamine	3.62	42	191m	0.263	ng	
6) bis(2-Chloroethyl)ether	7.22	93	952	0.394	ng	78
9) Naphthalene	10.64	128	13969	0.420	ng	100
10) Hexachlorobutadiene	10.91	225	1147	0.452	ng	98
12) 2-Methylnaphthalene	12.28	142	2195	0.406	ng	98
16) Acenaphthylene	14.18	152	4589	0.407	ng	99
17) Acenaphthene	14.53	154	2464	0.402	ng	98
18) Fluorene	15.51	166	3616	0.393	ng	98
20) 4-Bromophenyl-phenylether	16.41	248	1664	0.431	ng	95
21) Hexachlorobenzene	16.52	284	1643	0.416	ng	98
22) Pentachlorophenol	16.91	266	288	0.451	ng	97
23) Phenanthrene	17.26	178	6502	0.393	ng	99
24) Anthracene	17.35	178	5577	0.368	ng	98
26) Fluoranthene	19.28	202	10555	0.375	ng	99
28) Pyrene	19.64	202	10743	0.477	ng	99
30) Benzo(a)anthracene	21.39	228	10715	0.418	ng	98
31) Chrysene	21.44	228	12227	0.462	ng	100
32) Bis(2-ethylhexyl)phthalate	21.29	149	14184	0.386	ng	100
33) Indeno(1,2,3-cd)pyrene	26.61	276	12799	0.407	ng	98
35) Benzo(b)fluoranthene	23.15	252	10698	0.399	ng	97
36) Benzo(k)fluoranthene	23.20	252	12190	0.434	ng	98
37) Benzo(a)pyrene	23.82	252	10816	0.409	ng	98
38) Dibenzo(a,h)anthracene	26.65	278	9711	0.365	ng	# 96
39) Benzo(g,h,i)perylene	27.43	276	11331	0.412	ng	98

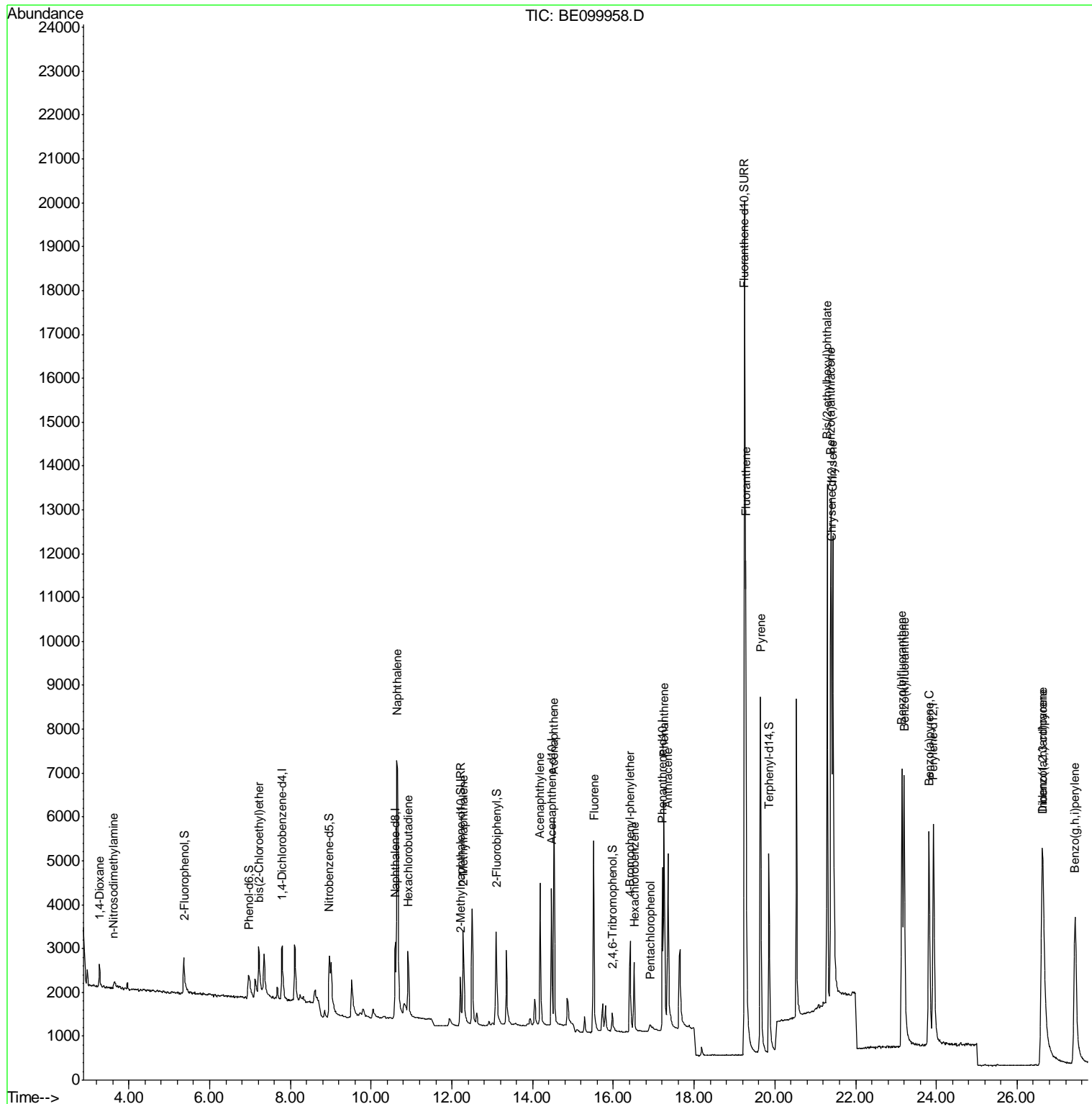
(#) = qualifier out of range (m) = manual integration (+) = signals summed

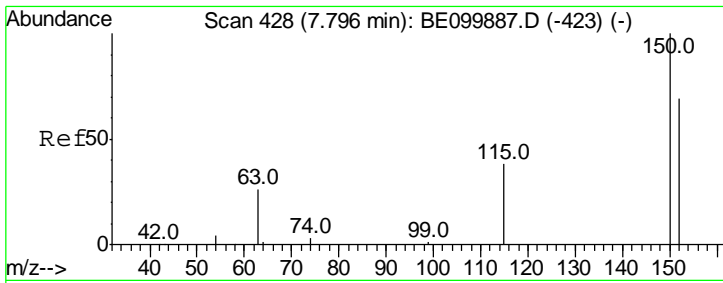
Data Path : Z:\SVOASRV\HPCHEM1\BNA E\DATA\BE061219\
 Data File : BE099958.D
 Acq On : 12 Jun 2019 16:12
 Operator : JU/SJ
 Sample : SSTDCCC0.4
 Misc :
 ALS Vial : 2 Sample Multiplier: 1

Instrument :
 BNA_E
Client Sample Id :
 SSTDCCC0.4EC

Manual Integrations
APPROVED
 mohammad
 6/14/2019 8:44:55 AM

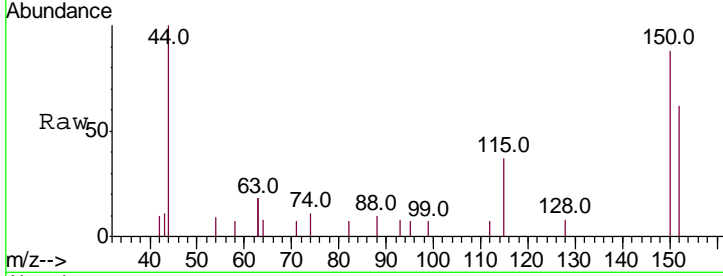
Quant Time: Jun 13 05:06:51 2019
 Quant Method : Z:\SVOASRV\HPCHEM1\BNA E\METHODS\8270-SIM-BE061019.M
 Quant Title : ASP BNA STANDARDS FOR 5 POINT CALIBRATION
 QLast Update : Mon Jun 10 14:57:20 2019
 Response via : Initial Calibration





#1
 1,4-Dichlorobenzene-d4
 Concen: 0.400 ng
 RT: 7.79 min Scan# 428
 Delta R.T. -0.00 min
 Lab File: BE099958.D
 Acq: 12 Jun 2019 16:12

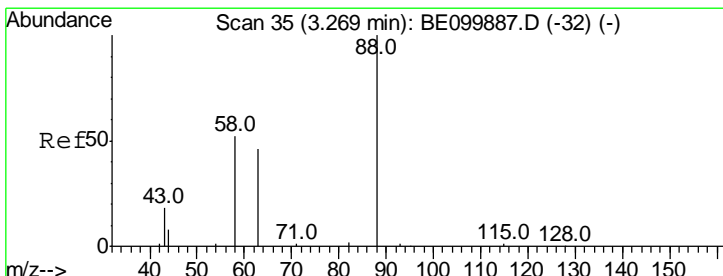
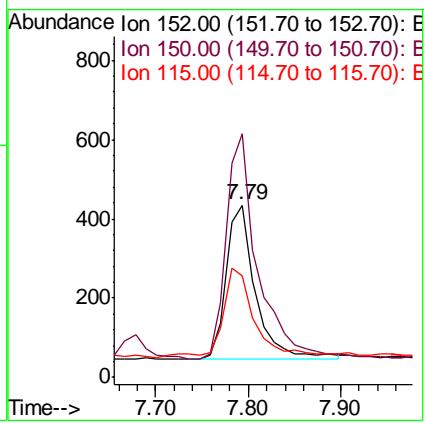
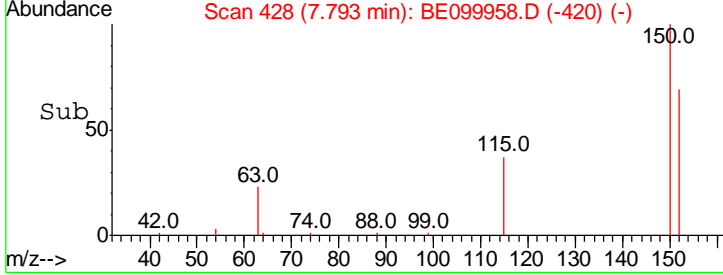
Instrument :
 BNA_E
ClientSampleId :
 SSTDCCC0.4EC



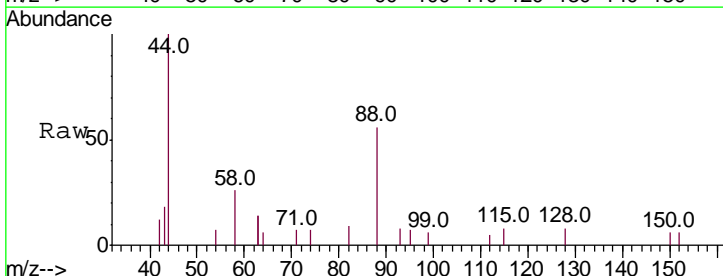
Tgt Ion: 152 Resp: 851

Ion	Ratio	Lower	Upper
152	100		
150	141.5	111.0	166.6
115	59.4	50.7	76.1

Manual Integrations
APPROVED
 mohammad
 6/14/2019 8:44:55 AM

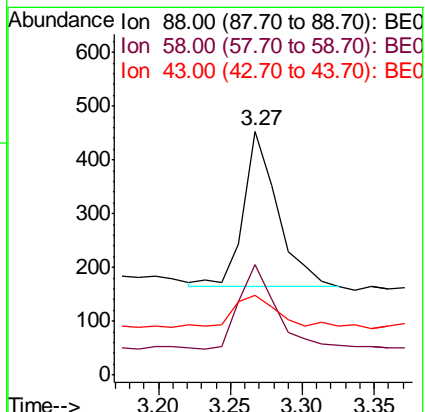
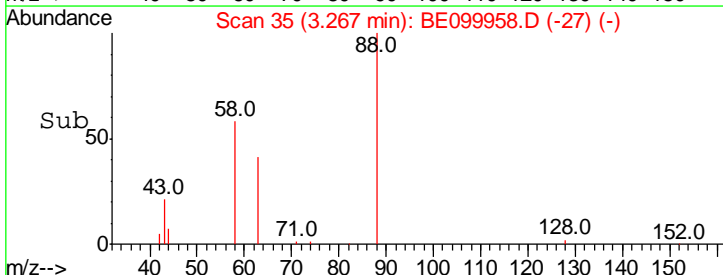


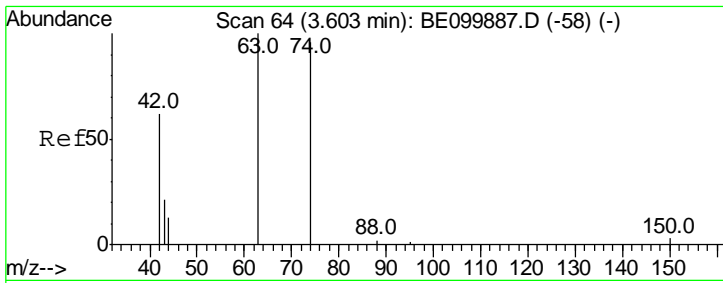
#2
 1,4-Dioxane
 Concen: 0.383 ng
 RT: 3.27 min Scan# 35
 Delta R.T. -0.00 min
 Lab File: BE099958.D
 Acq: 12 Jun 2019 16:12



Tgt Ion: 88 Resp: 482

Ion	Ratio	Lower	Upper
88	100		
58	57.5	48.8	73.2
43	26.1	19.0	28.6





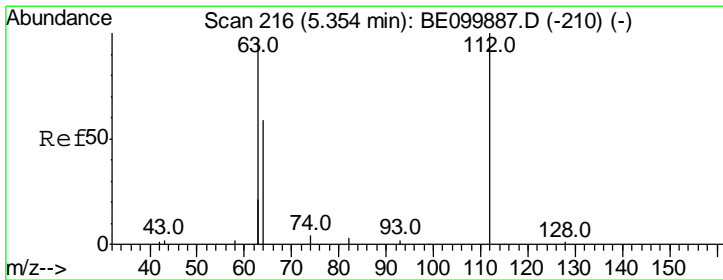
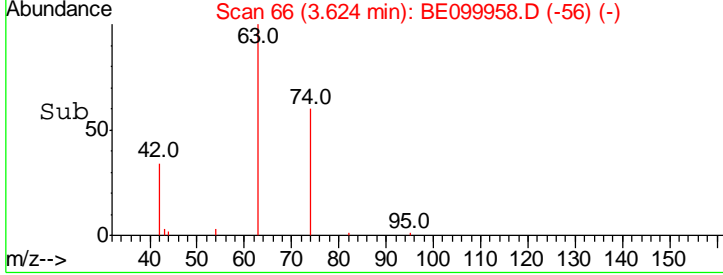
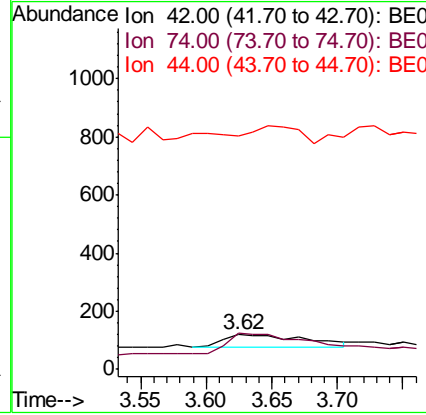
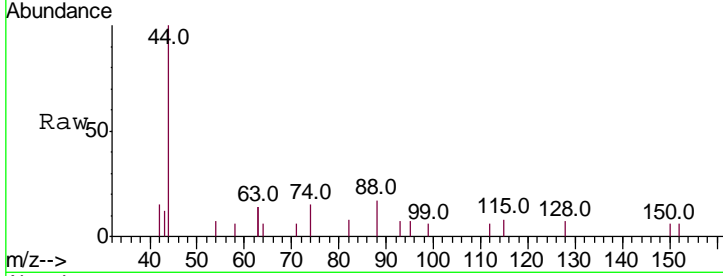
#3
 n-Nitrosodimethylamine
 Concen: 0.263 ng/ml
 RT: 3.62 min Scan# 66
 Delta R.T. 0.02 min
 Lab File: BE099958.D
 Acq: 12 Jun 2019 16:12

Instrument :
 BNA_E
ClientSampled :
 SSTDCCC0.4EC

Tgt Ion	Ratio	Lower	Upper
42	100		
74	103.7	0.0	0.0#
44	0.0	0.0	0.0

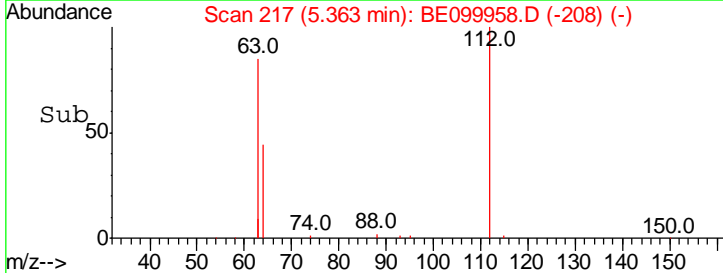
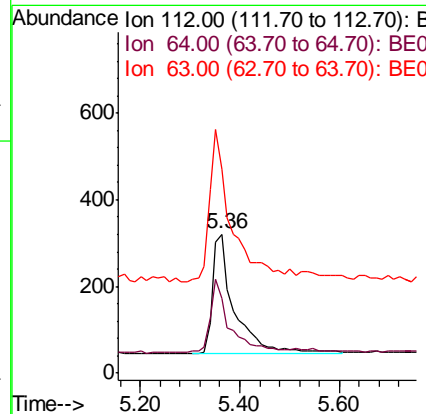
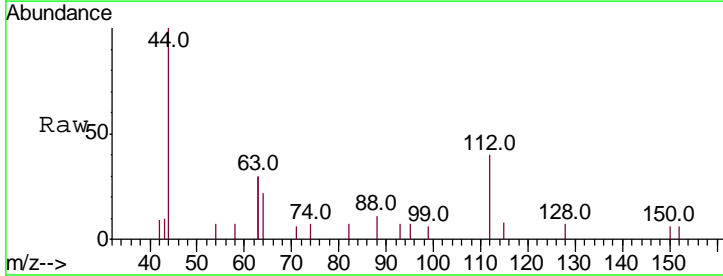
Manual Integrations
APPROVED

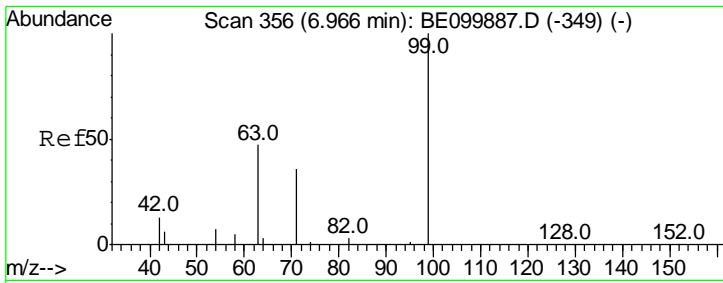
mohammad
 6/14/2019 8:44:55 AM



#4
 2-Fluorophenol
 Concen: 0.376 ng/ml
 RT: 5.36 min Scan# 217
 Delta R.T. 0.01 min
 Lab File: BE099958.D
 Acq: 12 Jun 2019 16:12

Tgt Ion	Ratio	Lower	Upper
112	100		
64	52.2	44.1	66.1
63	121.4	87.8	131.6





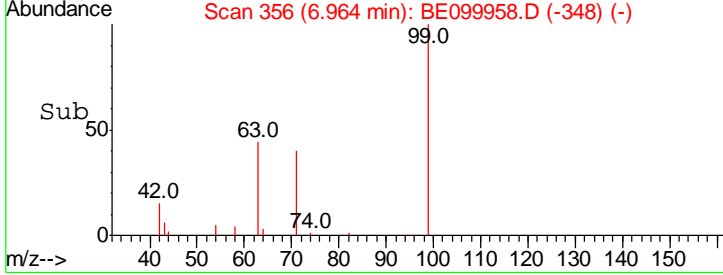
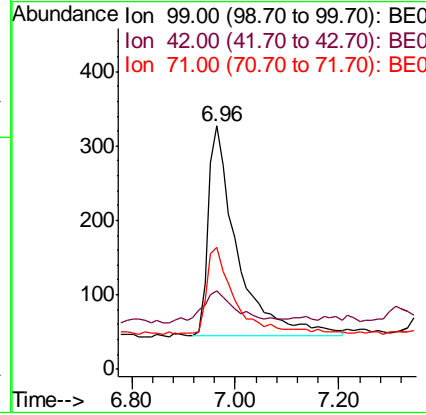
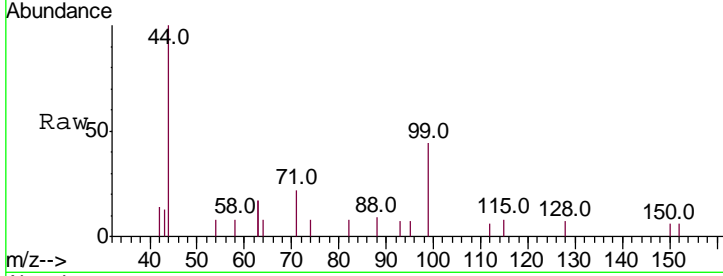
#5
 Phenol-d6
 Concen: 0.370 ng
 RT: 6.96 min Scan# 356
 Delta R.T. -0.00 min
 Lab File: BE099958.D
 Acq: 12 Jun 2019 16:12

Instrument :
 BNA_E
ClientSampled :
 SSTDCCC0.4EC

Tgt Ion	Resp	Lower	Upper
99	1094		
99	100		
42	15.0	15.9	23.9#
71	38.7	34.6	52.0

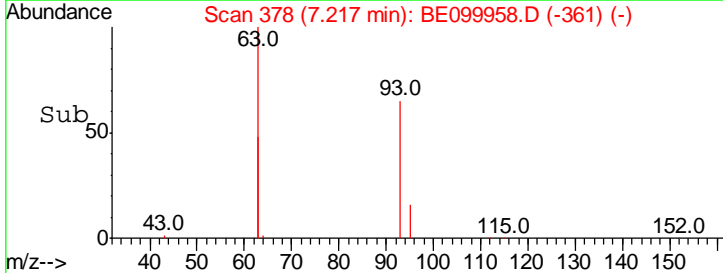
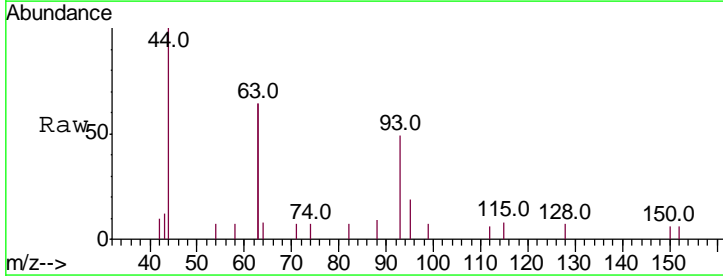
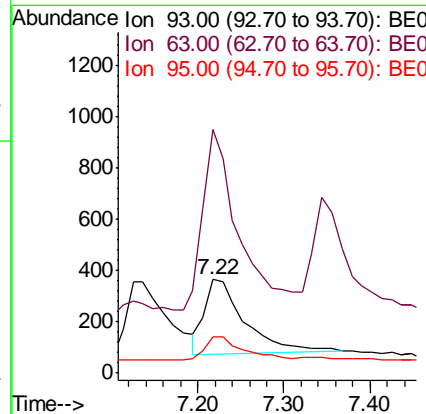
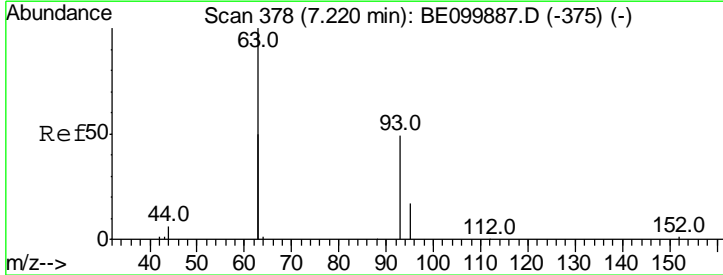
Manual Integrations
APPROVED

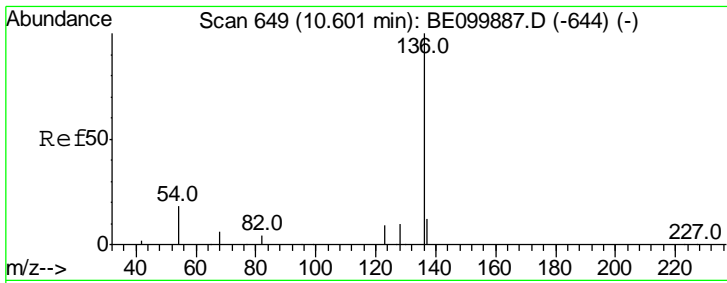
mohammad
 6/14/2019 8:44:55 AM



#6
 bis(2-Chloroethyl)ether
 Concen: 0.394 ng
 RT: 7.22 min Scan# 378
 Delta R.T. -0.00 min
 Lab File: BE099958.D
 Acq: 12 Jun 2019 16:12

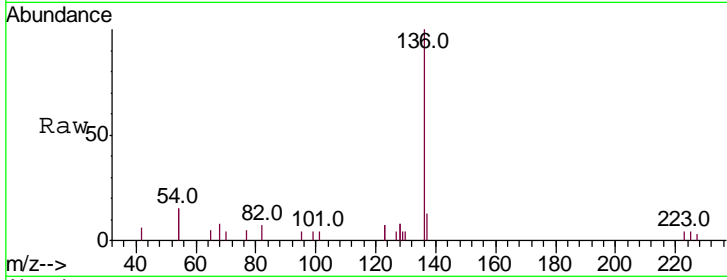
Tgt Ion	Resp	Lower	Upper
93	952		
93	100		
63	211.2	202.8	304.2
95	29.3	23.7	35.5





#7
 Naphthalene-d8
 Concen: 0.400 ng
 RT: 10.60 min Scan# 649
 Delta R.T. 0.00 min
 Lab File: BE099958.D
 Acq: 12 Jun 2019 16:12

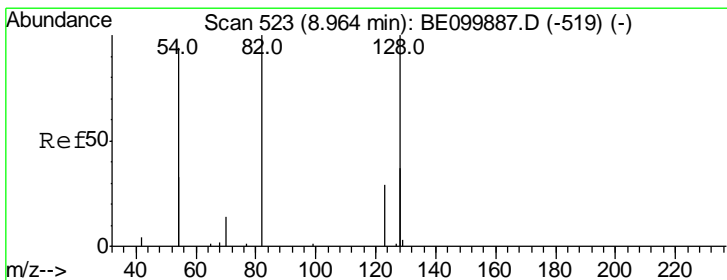
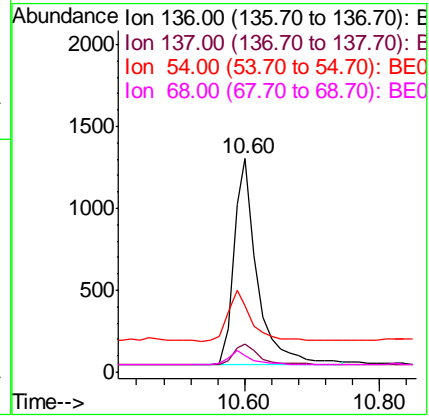
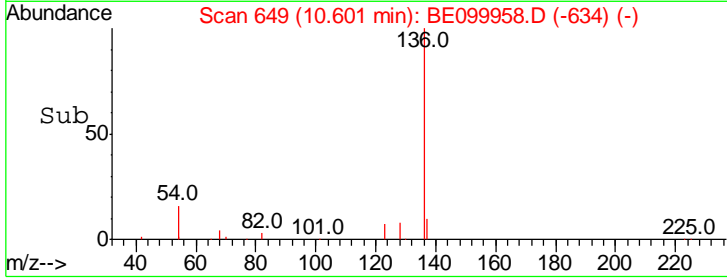
Instrument :
 BNA_E
ClientSampled :
 SSTDCCC0.4EC



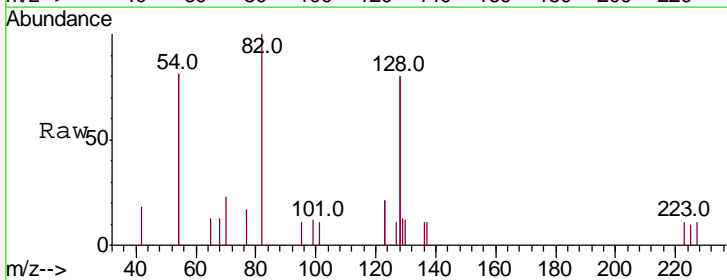
Tgt Ion: 136 Resp: 3084

Ion	Ratio	Lower	Upper
136	100		
137	13.4	12.3	18.5
54	31.0	28.2	42.4
68	7.7	7.8	11.8#

Manual Integrations
APPROVED
 mohammad
 6/14/2019 8:44:55 AM

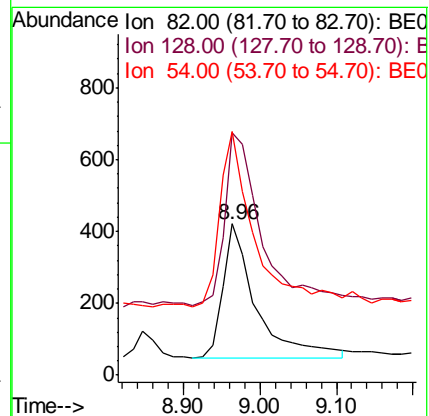
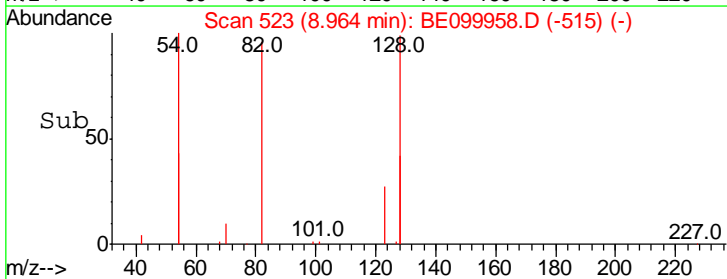


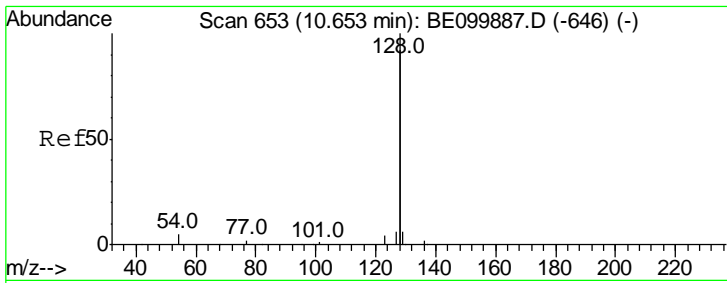
#8
 Nitrobenzene-d5
 Concen: 0.394 ng
 RT: 8.96 min Scan# 523
 Delta R.T. 0.00 min
 Lab File: BE099958.D
 Acq: 12 Jun 2019 16:12



Tgt Ion: 82 Resp: 1150

Ion	Ratio	Lower	Upper
82	100		
128	160.1	137.3	205.9
54	161.0	129.7	194.5





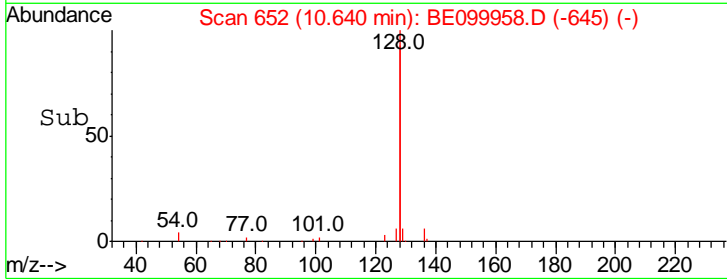
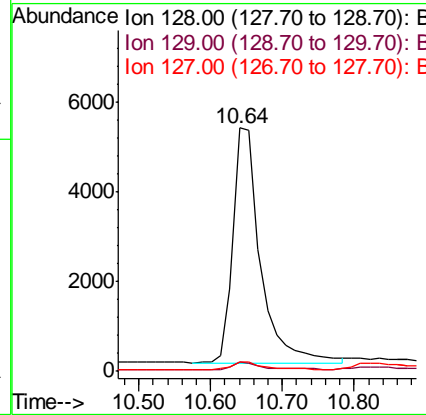
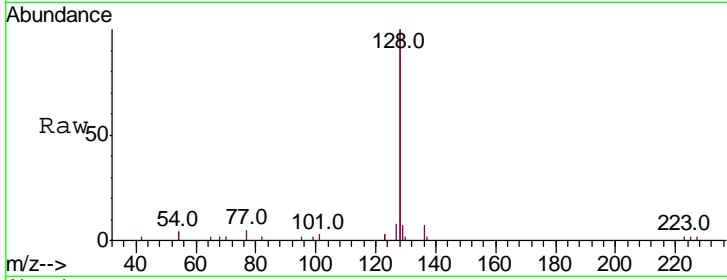
#9
 Naphthalene
 Concen: 0.420 ng
 RT: 10.64 min Scan# 652
 Delta R.T. -0.01 min
 Lab File: BE099958.D
 Acq: 12 Jun 2019 16:12

Instrument :
 BNA_E
ClientSampled :
 SSTDCCC0.4EC

Tgt Ion	Ratio	Lower	Upper
128	100		
129	3.7	3.0	4.6
127	4.0	3.4	5.0

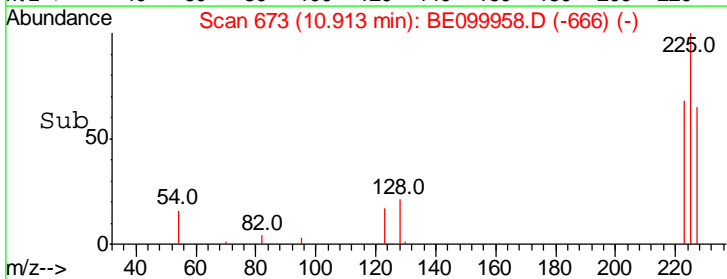
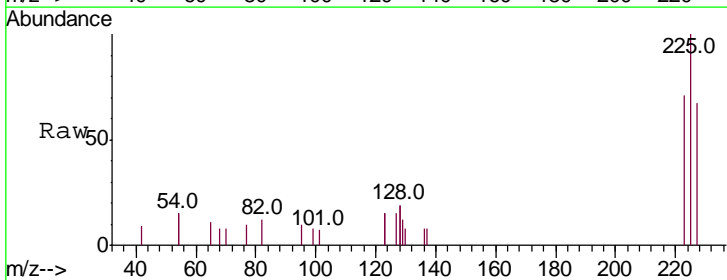
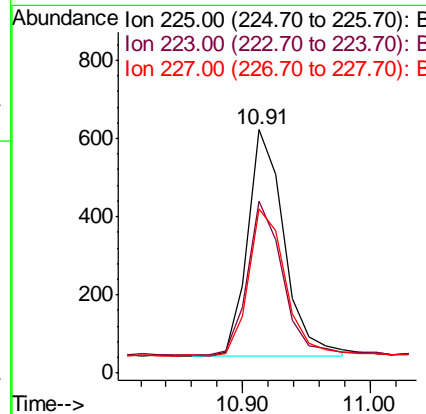
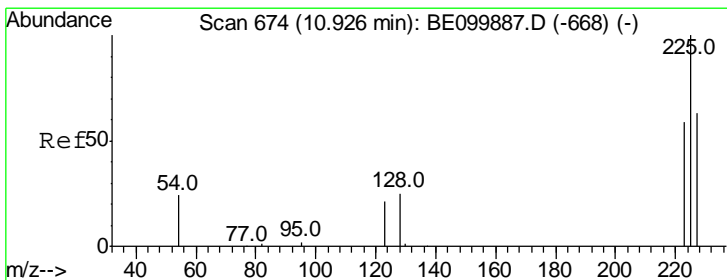
Manual Integrations
APPROVED

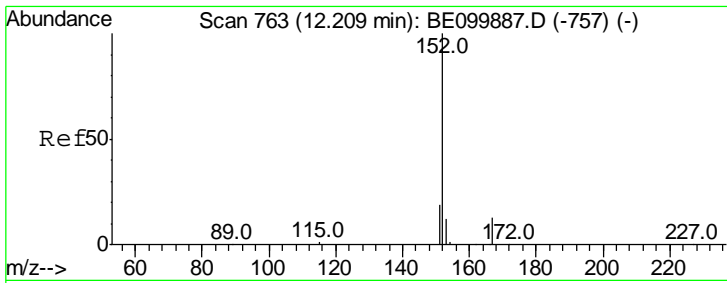
mohammad
 6/14/2019 8:44:55 AM



#10
 Hexachlorobutadiene
 Concen: 0.452 ng
 RT: 10.91 min Scan# 673
 Delta R.T. -0.01 min
 Lab File: BE099958.D
 Acq: 12 Jun 2019 16:12

Tgt Ion	Ratio	Lower	Upper
225	100		
223	65.1	51.6	77.4
227	65.6	50.6	76.0





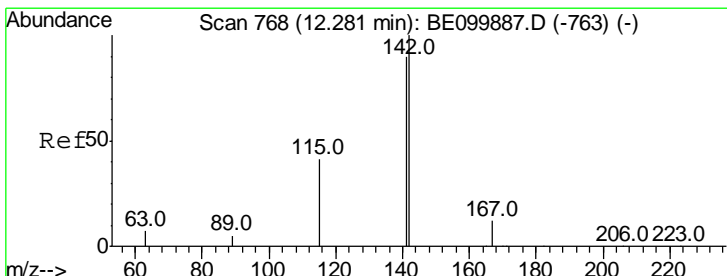
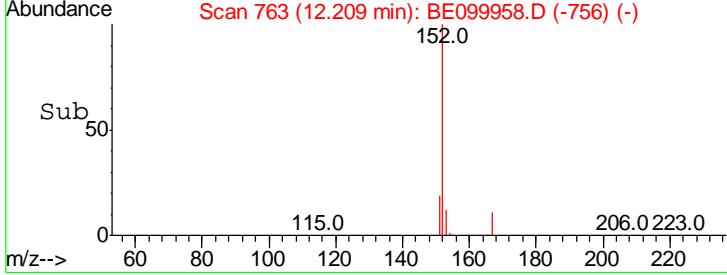
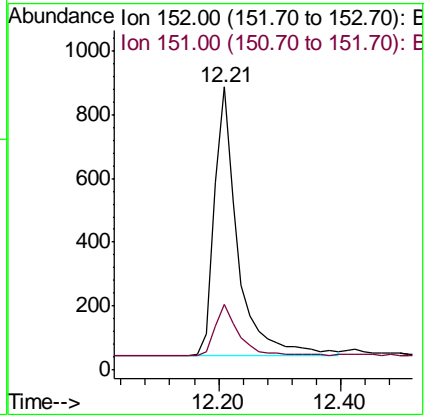
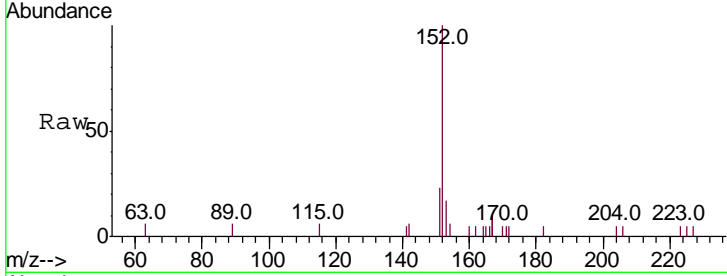
#11
 2-Methylnaphthalene-d10
 Concen: 0.413 ng
 RT: 12.21 min Scan# 763
 Delta R.T. 0.00 min
 Lab File: BE099958.D
 Acq: 12 Jun 2019 16:12

Instrument :
 BNA_E
ClientSampled :
 SSTCCCC0.4EC

Tgt Ion	Resp	Lower	Upper
152	100		
151	20.5	15.2	22.8

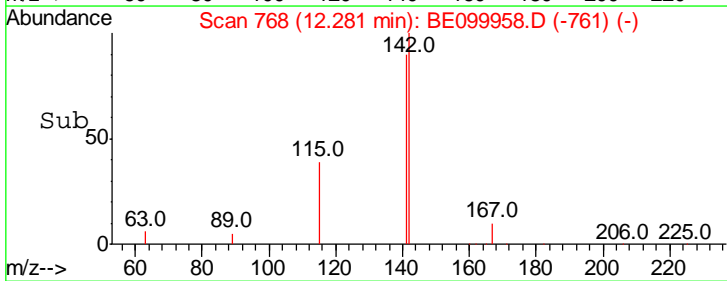
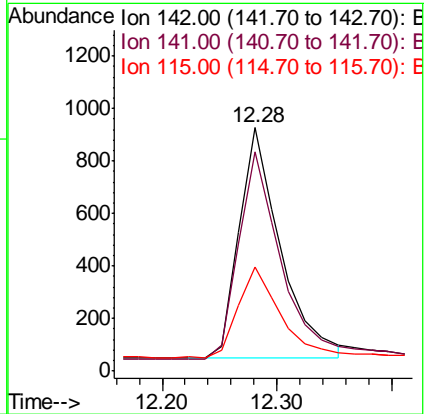
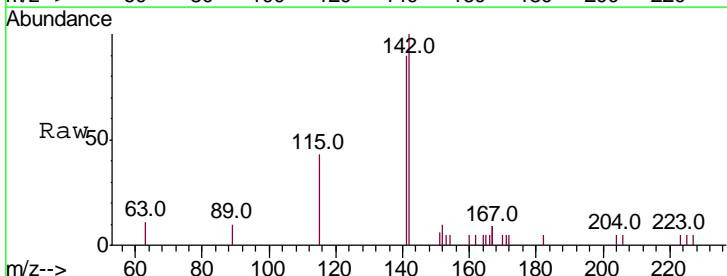
Manual Integrations
APPROVED

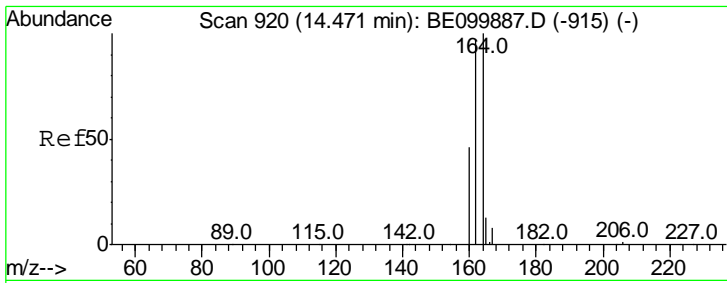
mohammad
 6/14/2019 8:44:55 AM



#12
 2-Methylnaphthalene
 Concen: 0.406 ng
 RT: 12.28 min Scan# 768
 Delta R.T. 0.00 min
 Lab File: BE099958.D
 Acq: 12 Jun 2019 16:12

Tgt Ion	Resp	Lower	Upper
142	100		
141	89.9	72.3	108.5
115	42.7	36.4	54.6



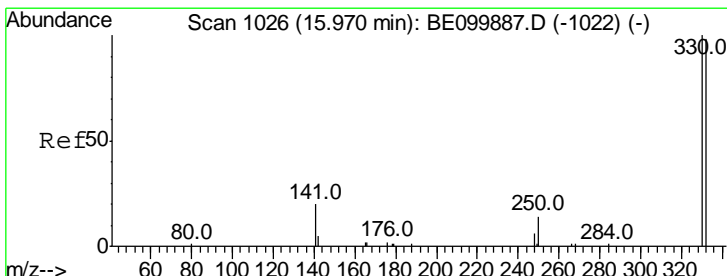
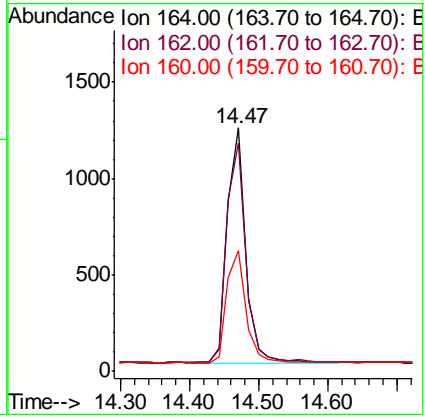
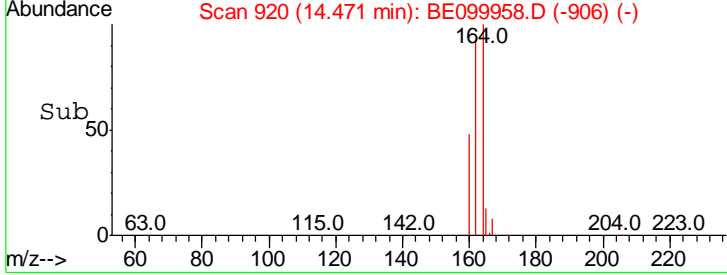
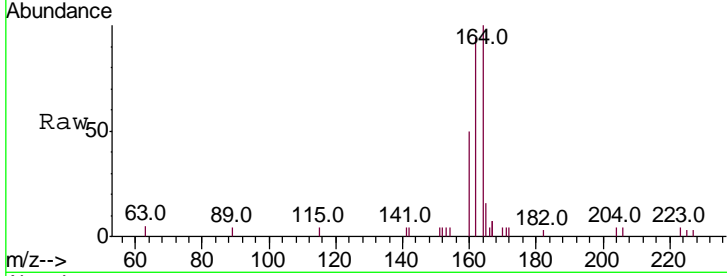


#13
 Acenaphthene-d10
 Concen: 0.400 ng
 RT: 14.47 min Scan# 920
 Delta R.T. 0.00 min
 Lab File: BE099958.D
 Acq: 12 Jun 2019 16:12

Instrument :
 BNA_E
ClientSampled :
 SSTDCCC0.4EC

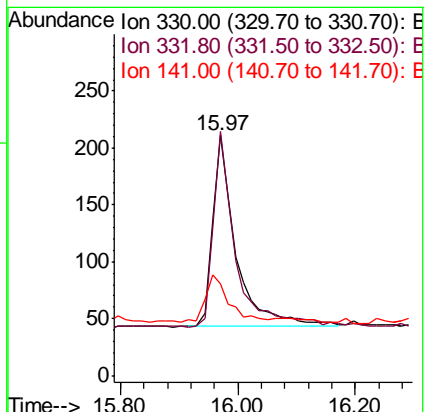
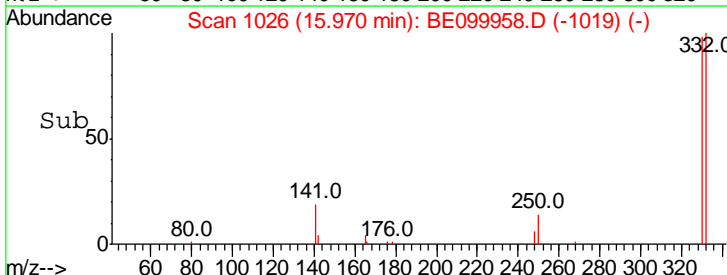
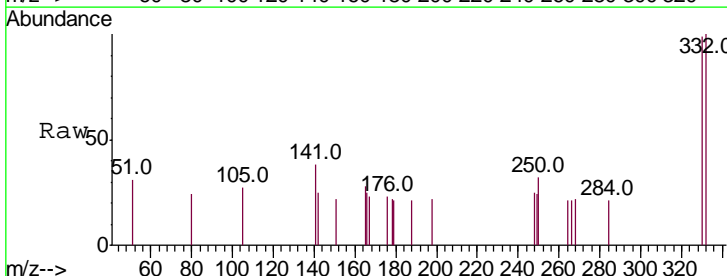
Tgt Ion	Resp	Lower	Upper
164	100		
162	93.7	77.8	116.8
160	49.6	38.2	57.4

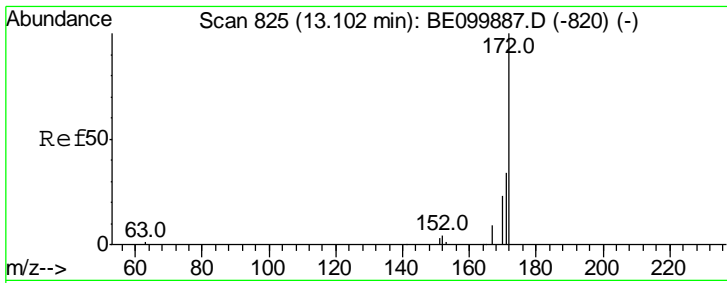
Manual Integrations
APPROVED
 mohammad
 6/14/2019 8:44:55 AM



#14
 2,4,6-Tribromophenol
 Concen: 0.273 ng
 RT: 15.97 min Scan# 1026
 Delta R.T. 0.00 min
 Lab File: BE099958.D
 Acq: 12 Jun 2019 16:12

Tgt Ion	Resp	Lower	Upper
330	100		
332	105.0	76.7	115.1
141	25.2	21.0	31.6





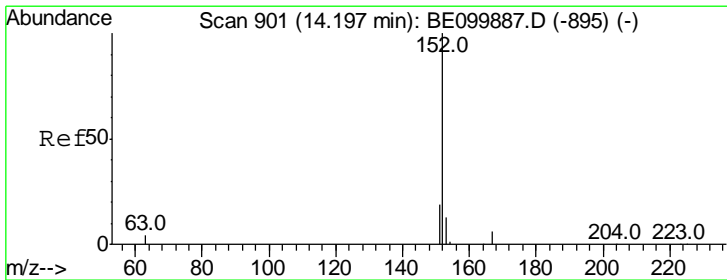
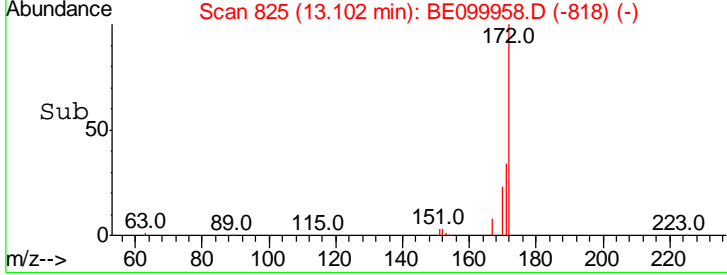
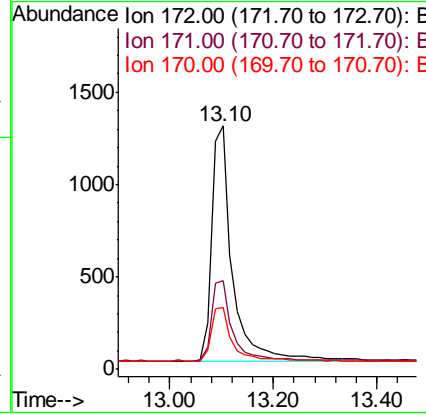
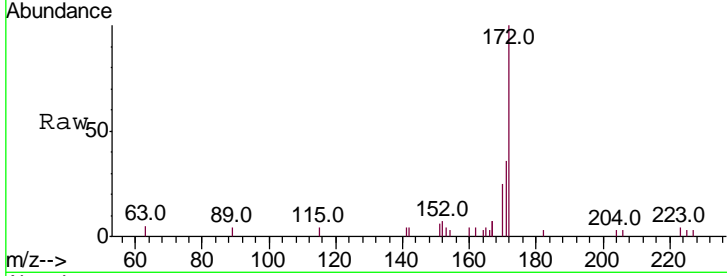
#15
 2-Fluorobiphenyl
 Concen: 0.418 ng
 RT: 13.10 min Scan# 825
 Delta R.T. 0.00 min
 Lab File: BE099958.D
 Acq: 12 Jun 2019 16:12

Instrument :
 BNA_E
ClientSampled :
 SSTDCCC0.4EC

Tgt Ion	Resp	Lower	Upper
172	100		
171	36.4	29.2	43.8
170	25.3	21.2	31.8

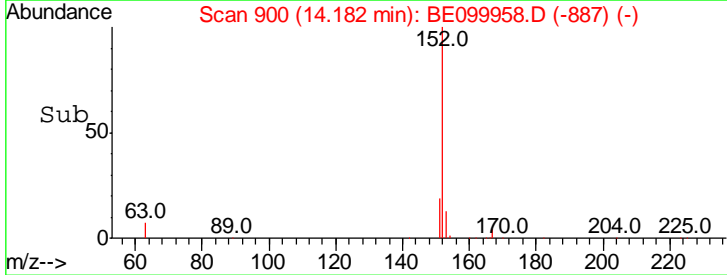
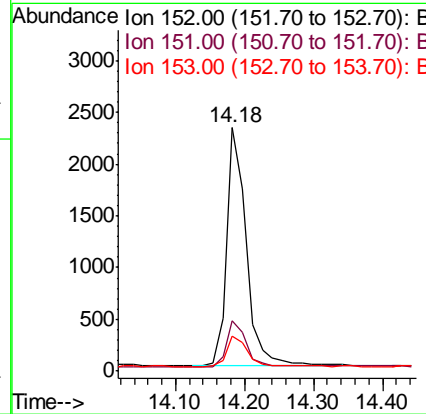
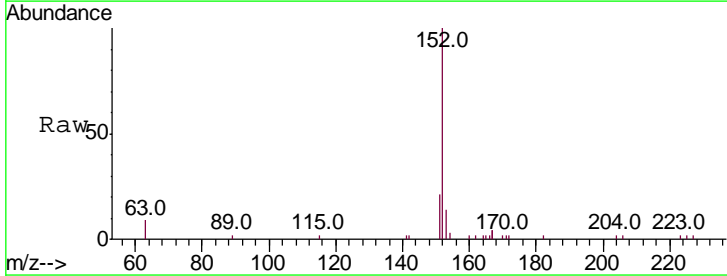
Manual Integrations
APPROVED

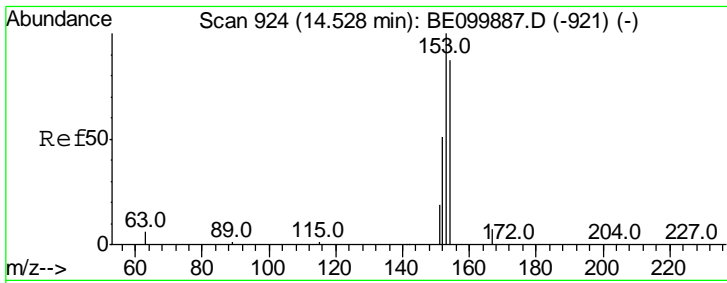
mohammad
 6/14/2019 8:44:55 AM



#16
 Acenaphthylene
 Concen: 0.407 ng
 RT: 14.18 min Scan# 900
 Delta R.T. -0.01 min
 Lab File: BE099958.D
 Acq: 12 Jun 2019 16:12

Tgt Ion	Resp	Lower	Upper
152	100		
151	19.6	15.5	23.3
153	13.2	10.2	15.2





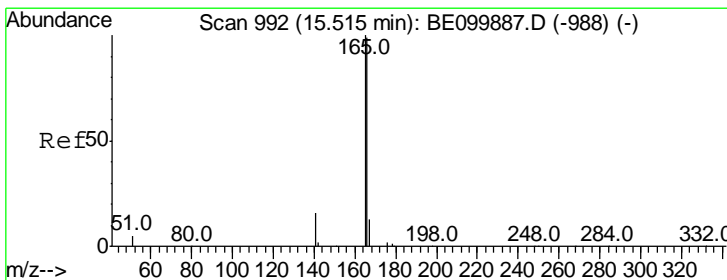
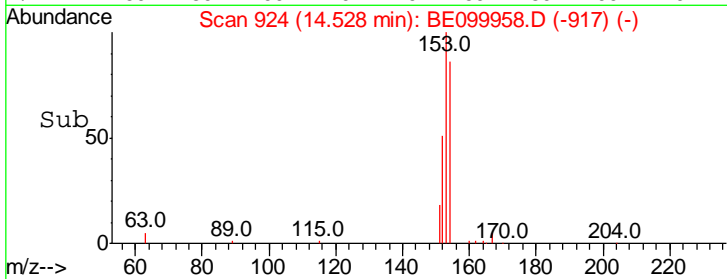
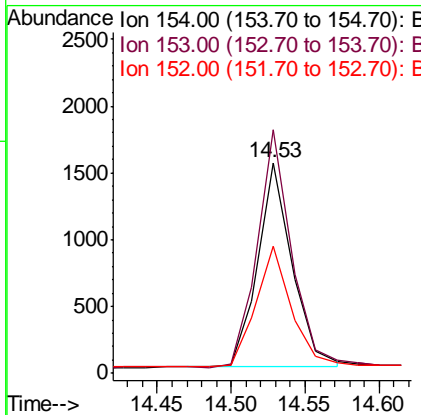
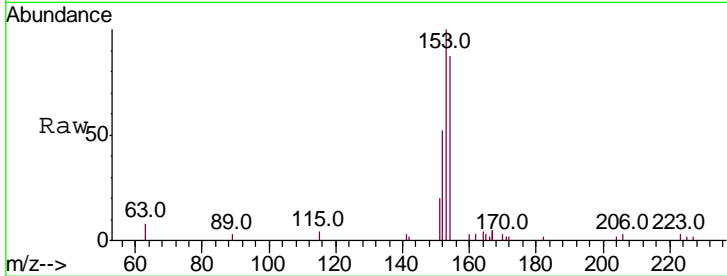
#17
 Acenaphthene
 Concen: 0.402 ng
 RT: 14.53 min Scan# 924
 Delta R.T. 0.00 min
 Lab File: BE099958.D
 Acq: 12 Jun 2019 16:12

Instrument :
 BNA_E
 ClientSampleID :
 SSTDCCC0.4EC

Tgt Ion	Resp	Lower	Upper
154	100		
153	114.9	93.1	139.7
152	60.7	47.0	70.4

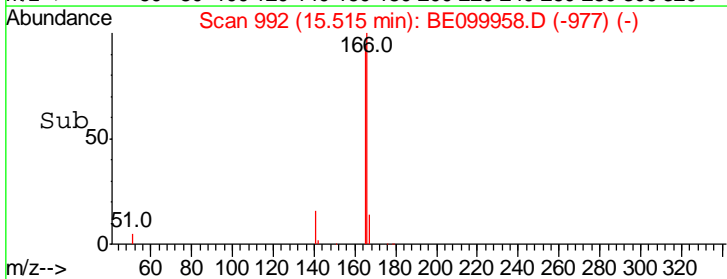
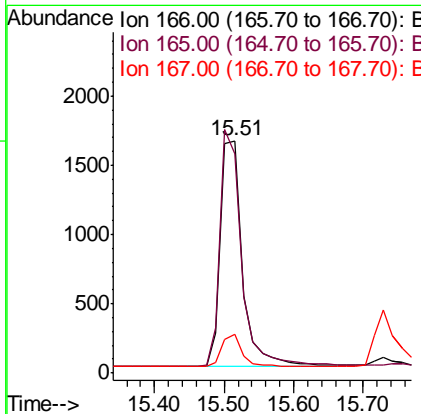
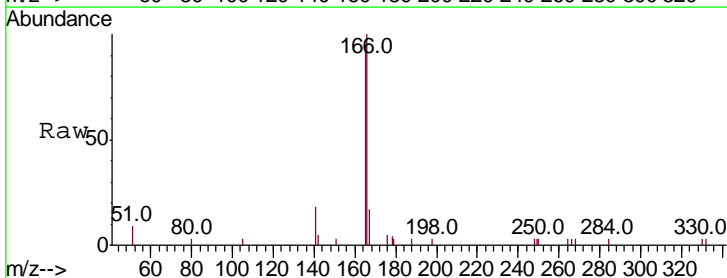
Manual Integrations
 APPROVED

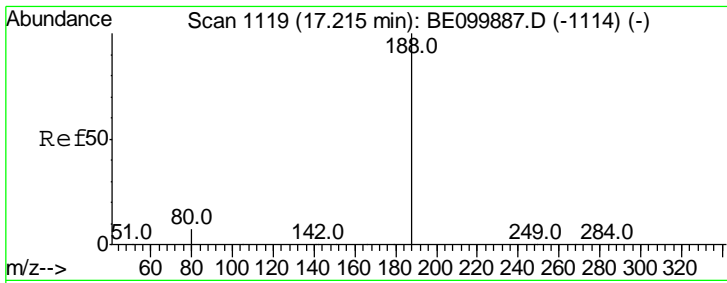
mohammad
 6/14/2019 8:44:55 AM



#18
 Fluorene
 Concen: 0.393 ng
 RT: 15.51 min Scan# 992
 Delta R.T. 0.00 min
 Lab File: BE099958.D
 Acq: 12 Jun 2019 16:12

Tgt Ion	Resp	Lower	Upper
166	100		
165	100.6	81.8	122.8
167	13.5	11.2	16.8





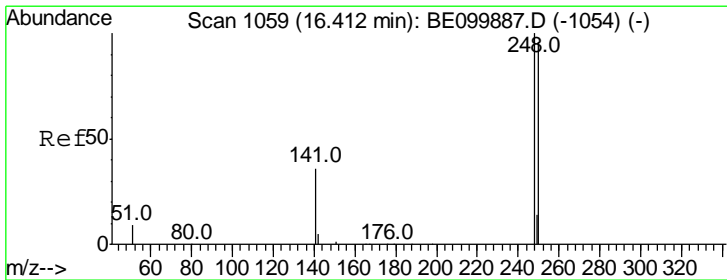
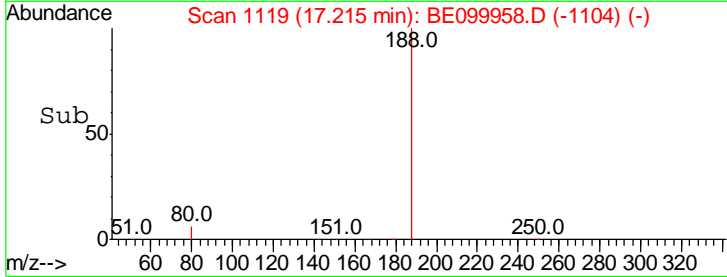
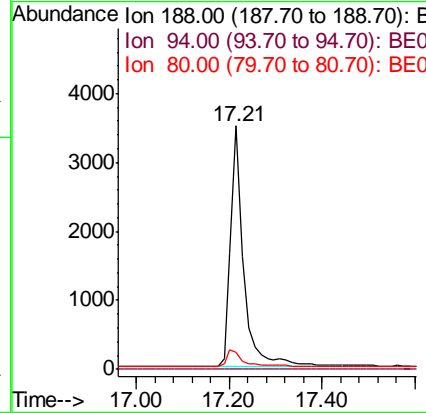
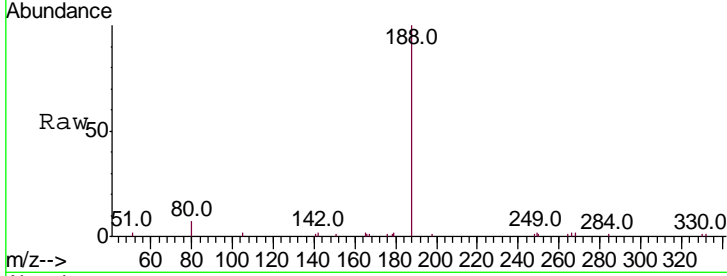
#19
 Phenanthrene-d10
 Concen: 0.400 ng
 RT: 17.21 min Scan# 1119
 Delta R.T. 0.00 min
 Lab File: BE099958.D
 Acq: 12 Jun 2019 16:12

Instrument :
 BNA_E
ClientSampled :
 SSTDCCC0.4EC

Tgt Ion	Ratio	Lower	Upper
188	100		
94	0.0	0.0	0.0
80	7.0	6.4	9.6

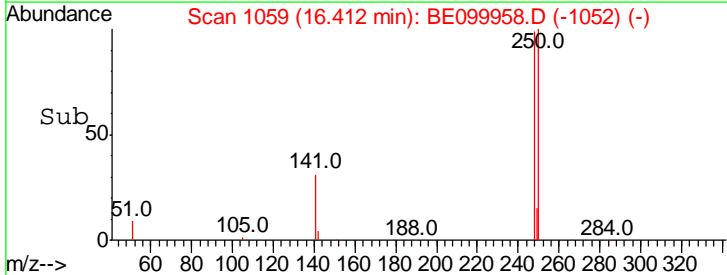
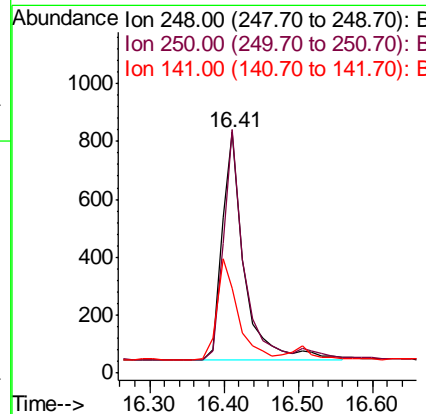
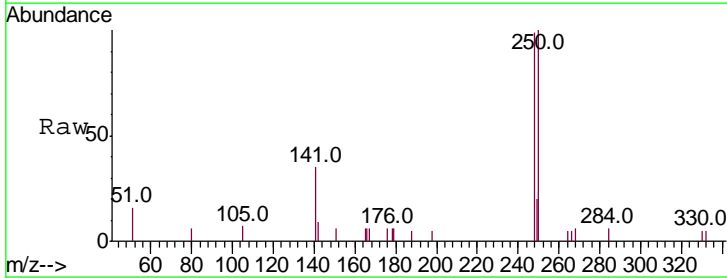
Manual Integrations
APPROVED

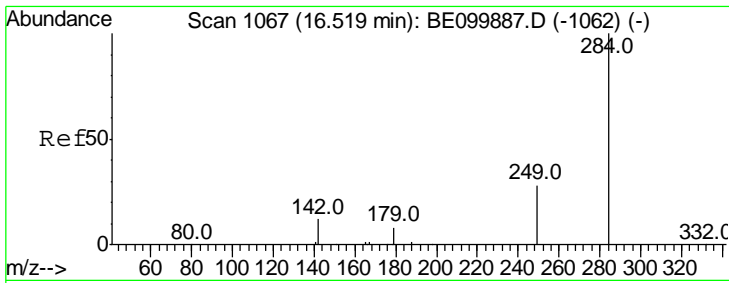
mohammad
 6/14/2019 8:44:55 AM



#20
 4-Bromophenyl-phenylether
 Concen: 0.431 ng
 RT: 16.41 min Scan# 1059
 Delta R.T. 0.00 min
 Lab File: BE099958.D
 Acq: 12 Jun 2019 16:12

Tgt Ion	Ratio	Lower	Upper
248	100		
250	101.2	77.5	116.3
141	35.4	31.8	47.8





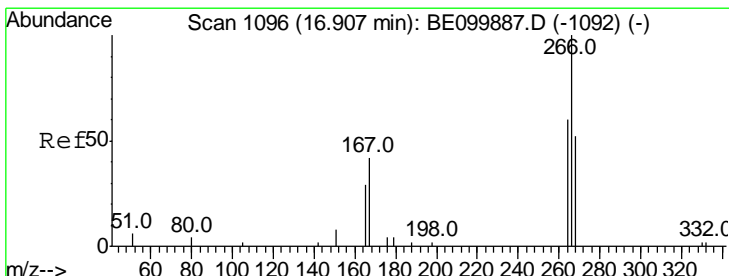
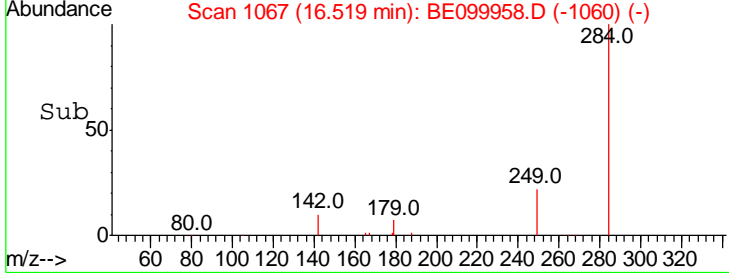
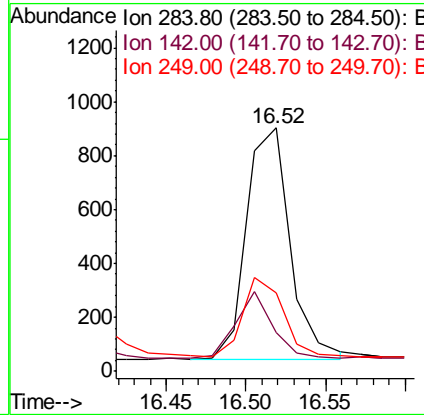
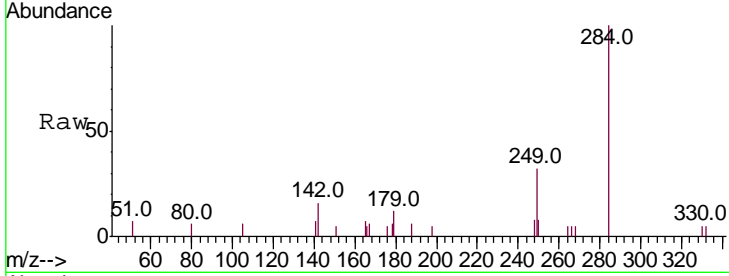
#21
 Hexachlorobenzene
 Concen: 0.416 ng
 RT: 16.52 min Scan# 1067
 Delta R.T. 0.00 min
 Lab File: BE099958.D
 Acq: 12 Jun 2019 16:12

Instrument :
 BNA_E
 ClientSampleId :
 SSTDCCC0.4EC

Tgt Ion	Ratio	Lower	Upper
284	100		
142	24.5	18.2	27.4
249	31.3	24.6	37.0

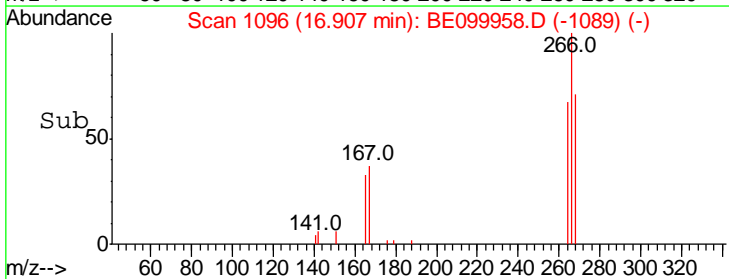
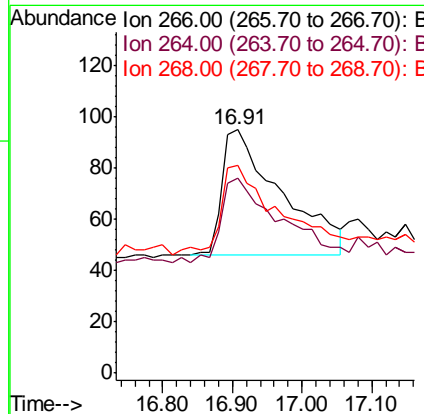
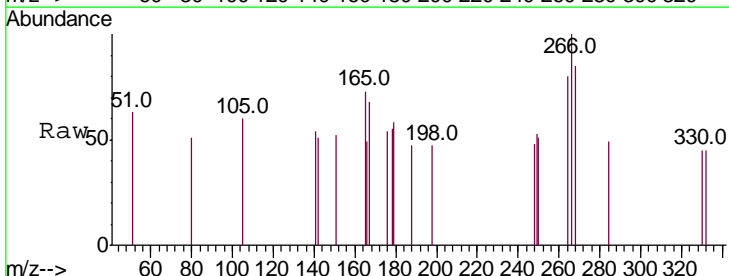
Manual Integrations
 APPROVED

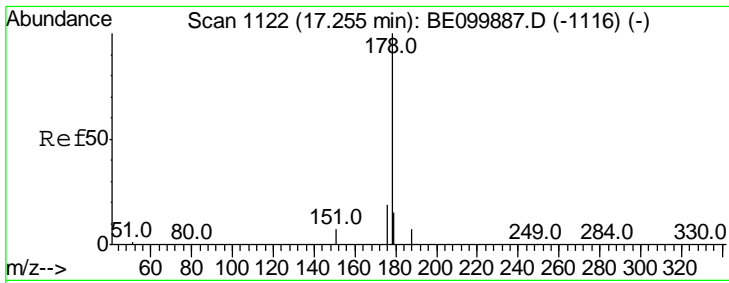
mohammad
 6/14/2019 8:44:55 AM



#22
 Pentachlorophenol
 Concen: 0.451 ng
 RT: 16.91 min Scan# 1096
 Delta R.T. 0.00 min
 Lab File: BE099958.D
 Acq: 12 Jun 2019 16:12

Tgt Ion	Ratio	Lower	Upper
266	100		
264	80.0	62.2	93.2
268	85.3	65.5	98.3





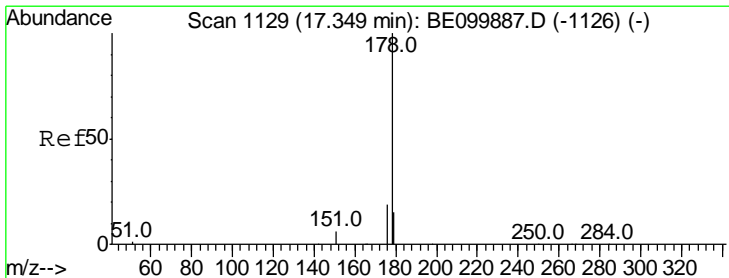
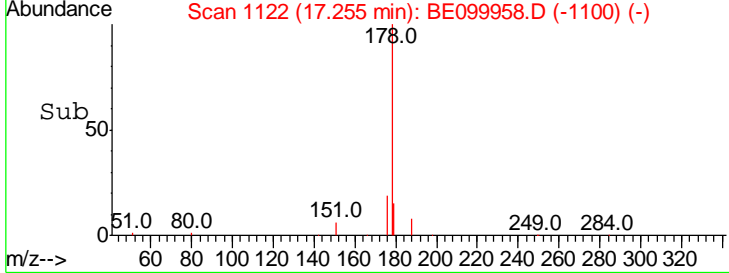
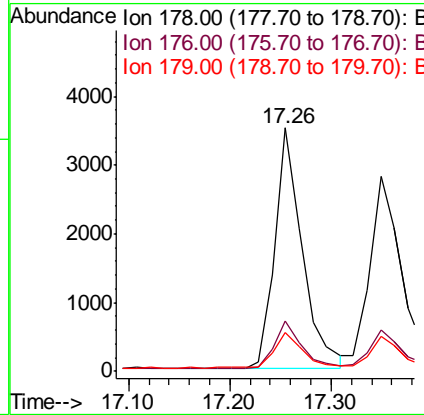
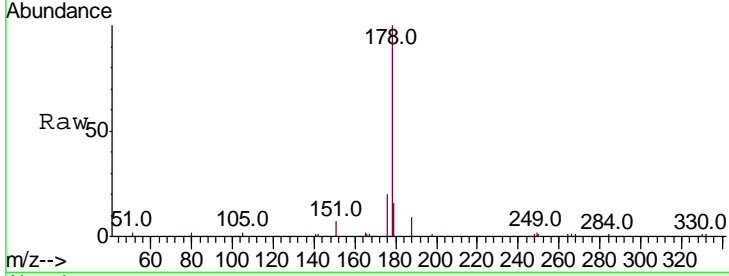
#23
 Phenanthrene
 Concen: 0.393 ng
 RT: 17.26 min Scan# 1122
 Delta R.T. 0.00 min
 Lab File: BE099958.D
 Acq: 12 Jun 2019 16:12

Instrument :
 BNA_E
 ClientSampled :
 SSTDCCC0.4EC

Tgt Ion	Ratio	Lower	Upper
178	100		
176	19.2	15.8	23.8
179	15.4	12.4	18.6

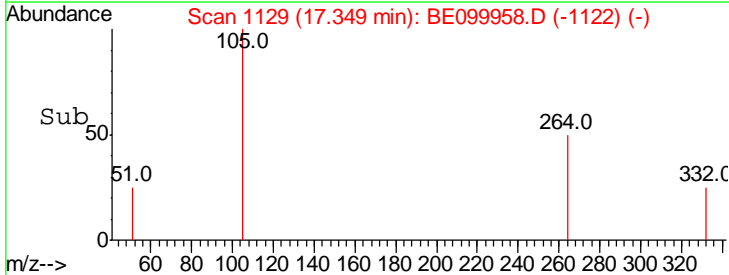
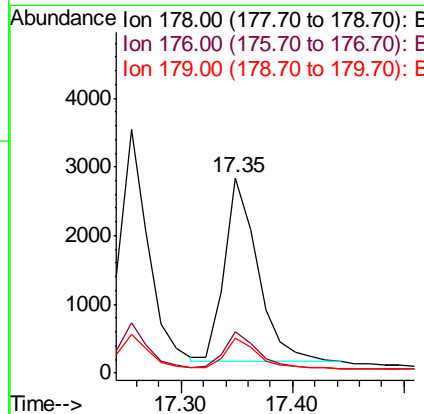
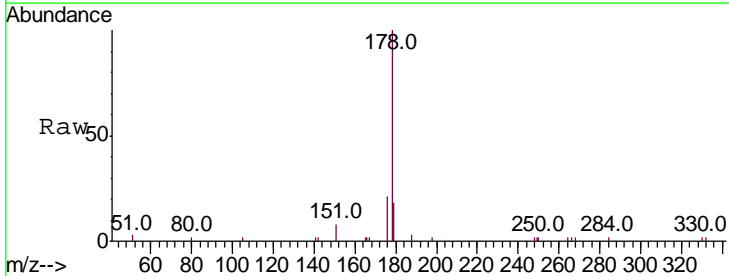
Manual Integrations
 APPROVED

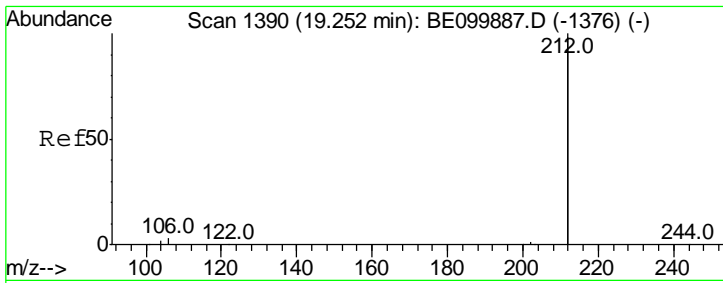
mohammad
 6/14/2019 8:44:55 AM



#24
 Anthracene
 Concen: 0.368 ng
 RT: 17.35 min Scan# 1129
 Delta R.T. 0.00 min
 Lab File: BE099958.D
 Acq: 12 Jun 2019 16:12

Tgt Ion	Ratio	Lower	Upper
178	100		
176	19.6	14.6	22.0
179	15.6	12.3	18.5



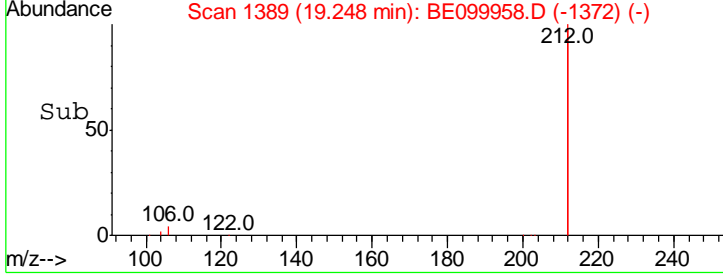
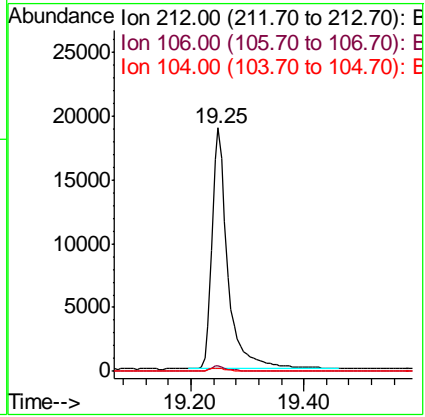
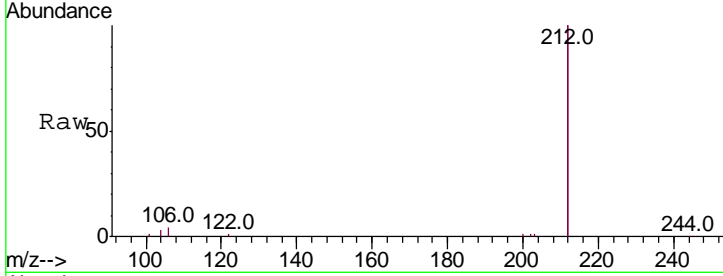


#25
 Fluoranthene-d10
 Concen: 0.371 ng
 RT: 19.25 min Scan# 1389
 Delta R.T. -0.00 min
 Lab File: BE099958.D
 Acq: 12 Jun 2019 16:12

Instrument :
 BNA_E
ClientSampled :
 SSTDCCC0.4EC

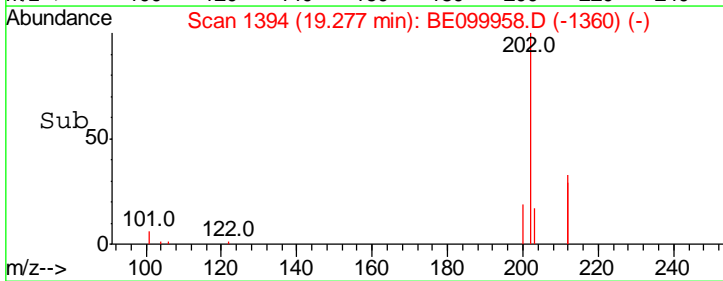
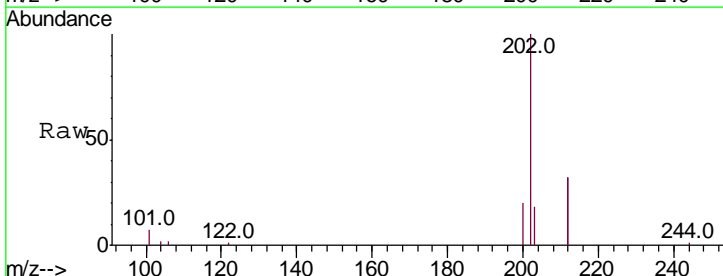
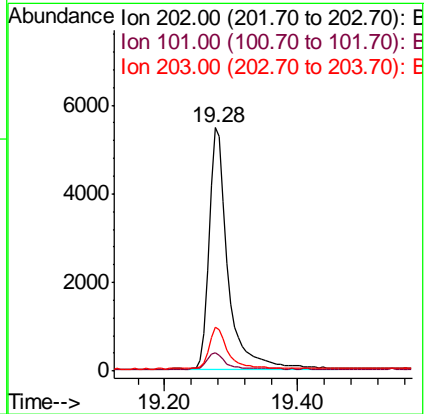
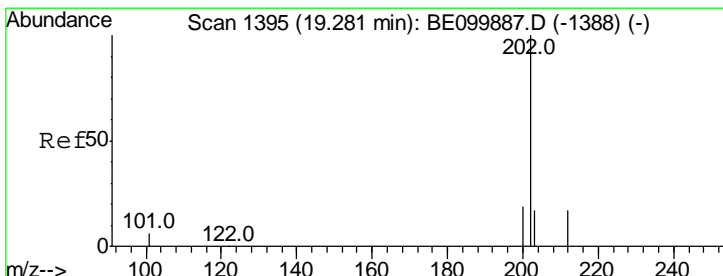
Tgt Ion	Resp	Lower	Upper
212	100		
106	1.8	1.4	2.2
104	1.1	0.9	1.3

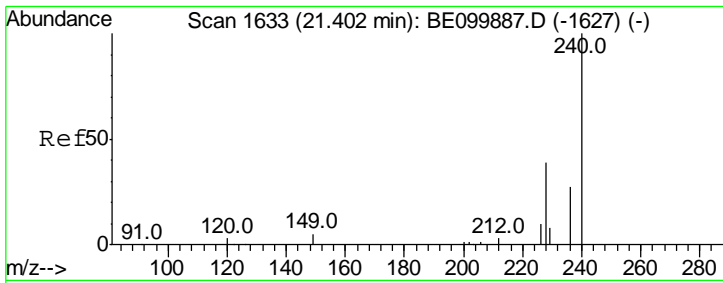
Manual Integrations
APPROVED
 mohammad
 6/14/2019 8:44:55 AM



#26
 Fluoranthene
 Concen: 0.375 ng
 RT: 19.28 min Scan# 1394
 Delta R.T. -0.00 min
 Lab File: BE099958.D
 Acq: 12 Jun 2019 16:12

Tgt Ion	Resp	Lower	Upper
202	100		
101	6.7	5.4	8.0
203	17.0	13.2	19.8



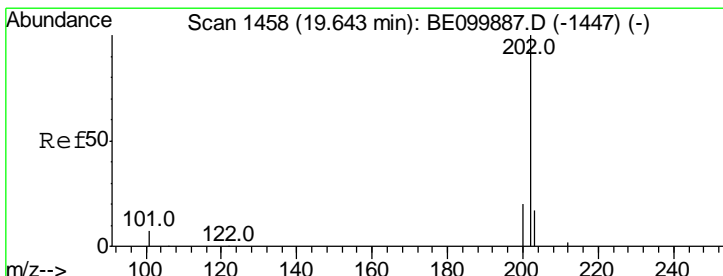
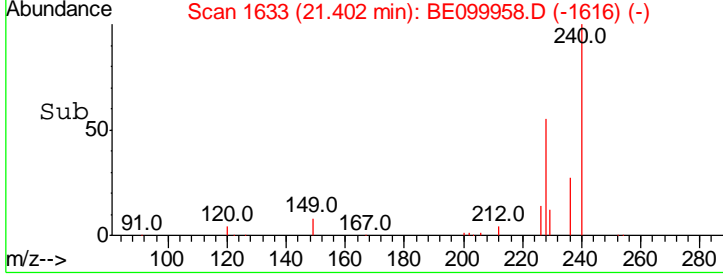
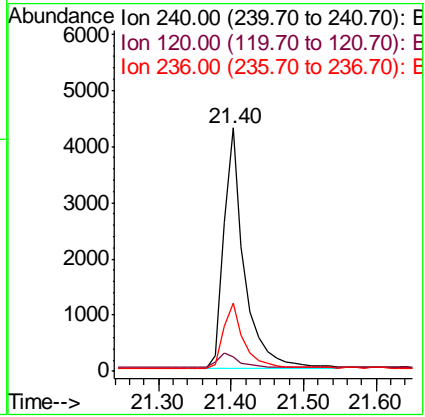
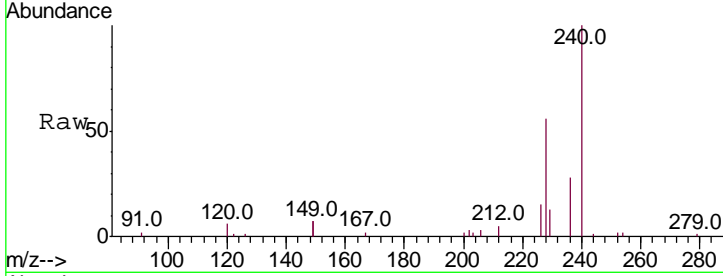


#27
 Chrysene-d12
 Concen: 0.400 ng
 RT: 21.40 min Scan# 1633
 Delta R.T. 0.00 min
 Lab File: BE099958.D
 Acq: 12 Jun 2019 16:12

Instrument :
 BNA_E
ClientSampleId :
 SSTDCCC0.4EC

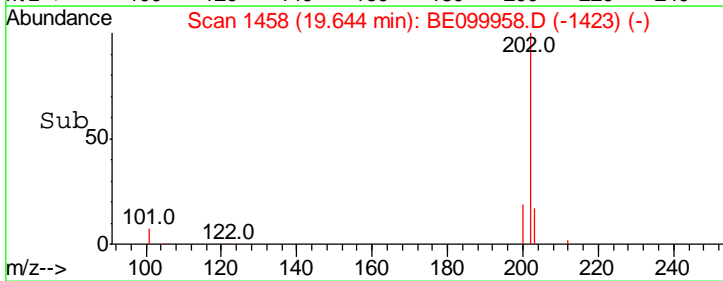
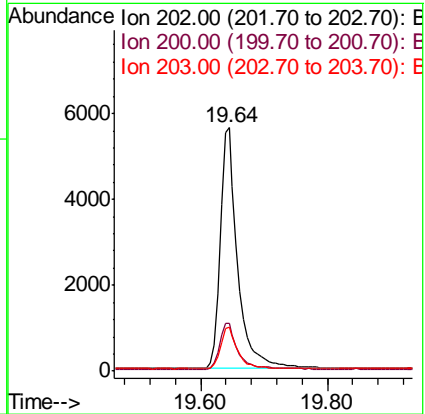
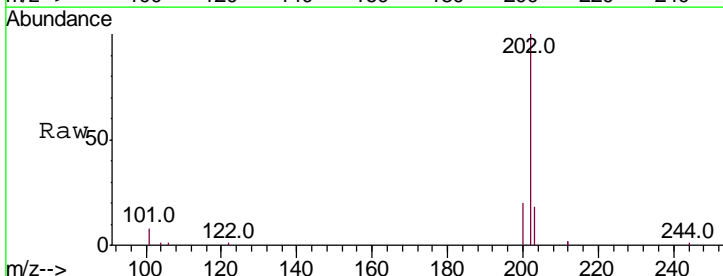
Tgt Ion	Resp	Lower	Upper
240	100		
120	5.7	3.8	5.6#
236	28.0	22.0	33.0

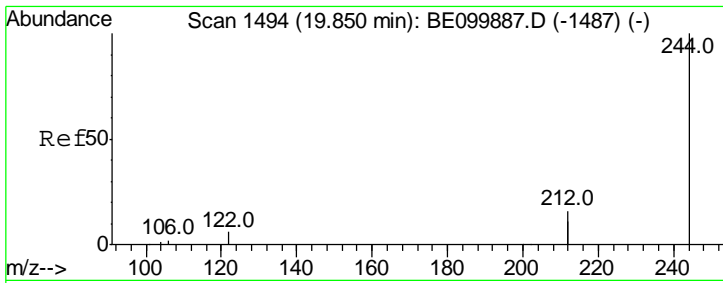
Manual Integrations
APPROVED
 mohammad
 6/14/2019 8:44:55 AM



#28
 Pyrene
 Concen: 0.477 ng
 RT: 19.64 min Scan# 1458
 Delta R.T. 0.00 min
 Lab File: BE099958.D
 Acq: 12 Jun 2019 16:12

Tgt Ion	Resp	Lower	Upper
202	100		
200	19.8	15.5	23.3
203	17.5	14.0	21.0





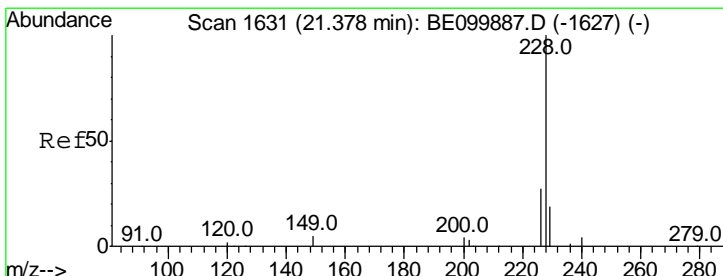
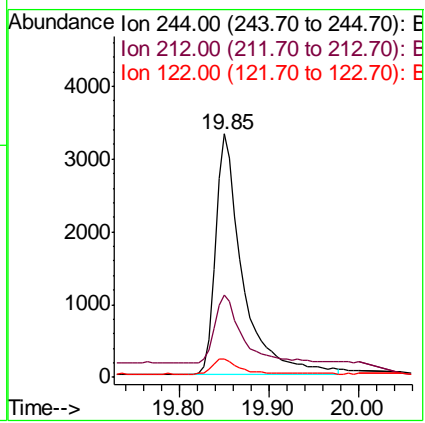
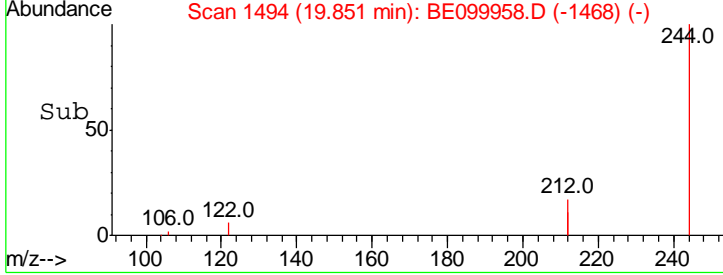
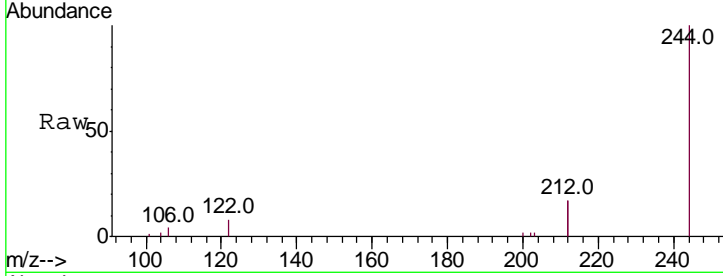
#29
 Terphenyl-d14
 Concen: 0.447 ng
 RT: 19.85 min Scan# 1494
 Delta R.T. 0.00 min
 Lab File: BE099958.D
 Acq: 12 Jun 2019 16:12

Instrument :
 BNA_E
ClientSampled :
 SSTDCCC0.4EC

Tgt Ion: 244 Resp: 6901

Ion	Ratio	Lower	Upper
244	100		
212	33.7	25.7	38.5
122	7.6	5.5	8.3

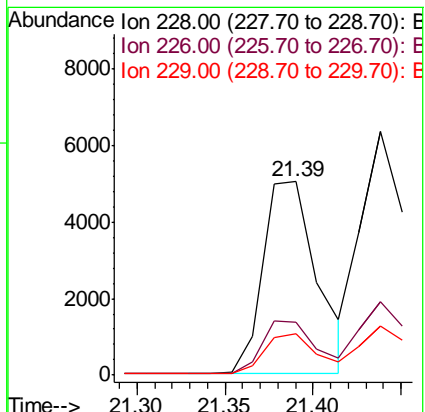
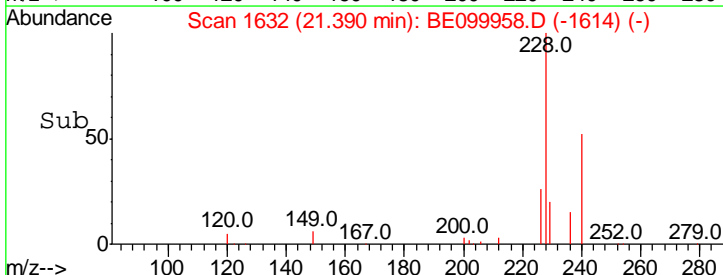
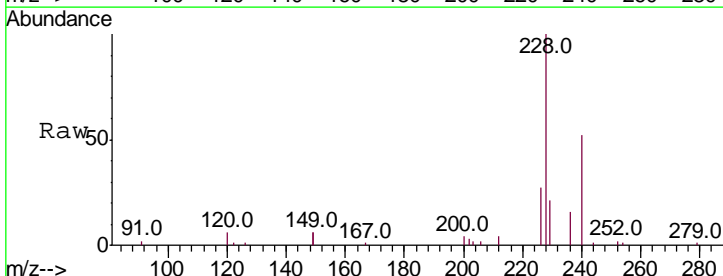
Manual Integrations
APPROVED
 mohammad
 6/14/2019 8:44:55 AM

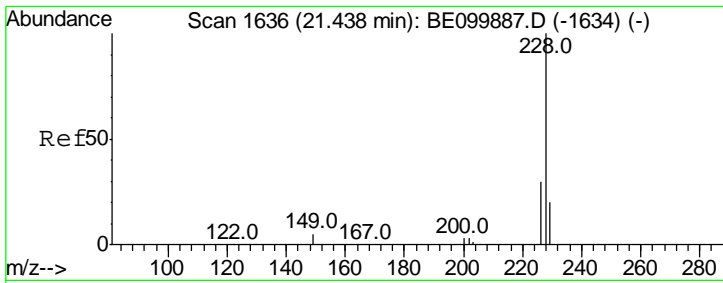


#30
 Benzo(a)anthracene
 Concen: 0.418 ng
 RT: 21.39 min Scan# 1632
 Delta R.T. 0.01 min
 Lab File: BE099958.D
 Acq: 12 Jun 2019 16:12

Tgt Ion: 228 Resp: 10715

Ion	Ratio	Lower	Upper
228	100		
226	27.1	22.5	33.7
229	21.2	15.9	23.9





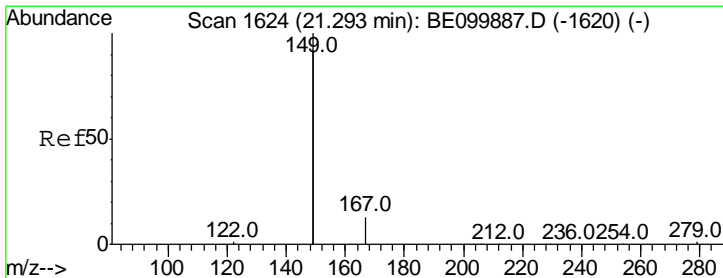
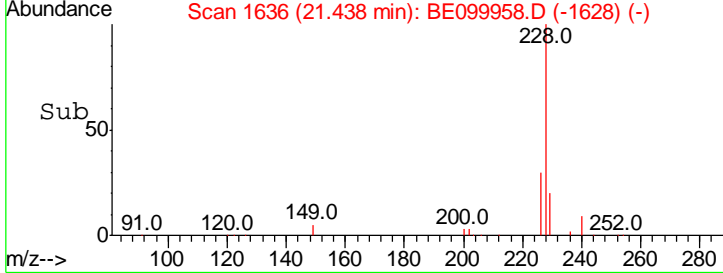
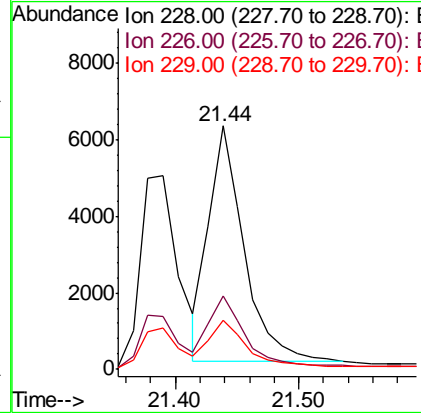
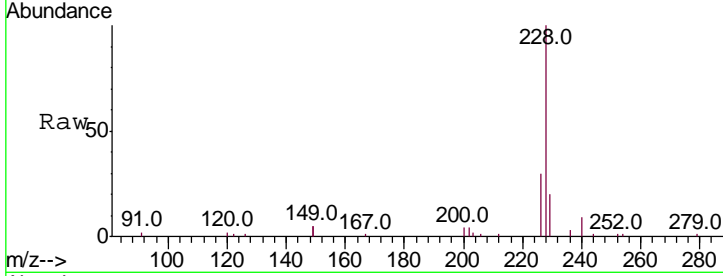
#31
 Chrysene
 Concen: 0.462 ng
 RT: 21.44 min Scan# 1636
 Delta R.T. 0.00 min
 Lab File: BE099958.D
 Acq: 12 Jun 2019 16:12

Instrument :
 BNA_E
 ClientSampled :
 SSTDCCC0.4EC

Tgt Ion	Resp	Lower	Upper
228	100		
226	30.1	24.1	36.1
229	20.3	16.1	24.1

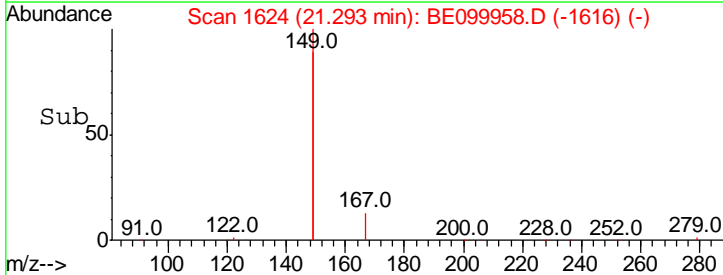
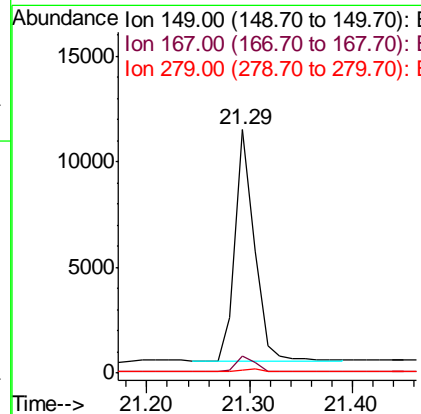
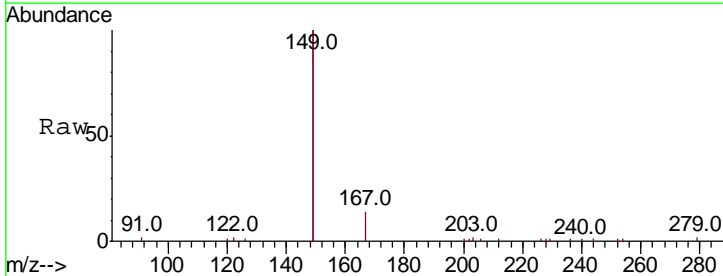
Manual Integrations
 APPROVED

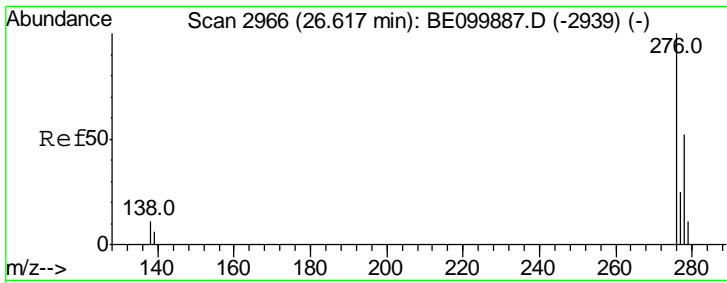
mohammad
 6/14/2019 8:44:55 AM



#32
 Bis(2-ethylhexyl)phthalate
 Concen: 0.386 ng
 RT: 21.29 min Scan# 1624
 Delta R.T. 0.00 min
 Lab File: BE099958.D
 Acq: 12 Jun 2019 16:12

Tgt Ion	Resp	Lower	Upper
149	100		
167	7.2	5.9	8.9
279	1.6	1.2	1.8





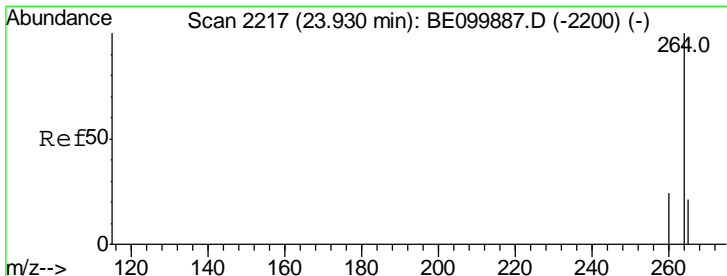
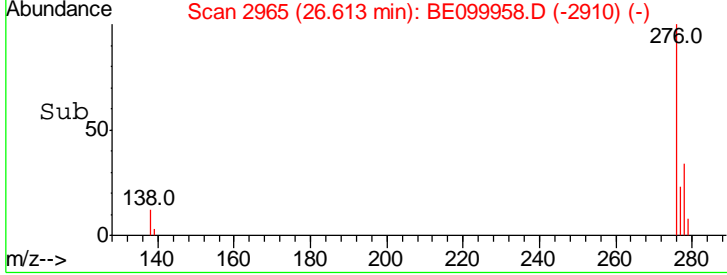
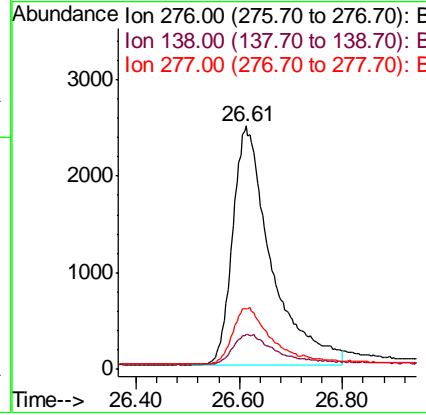
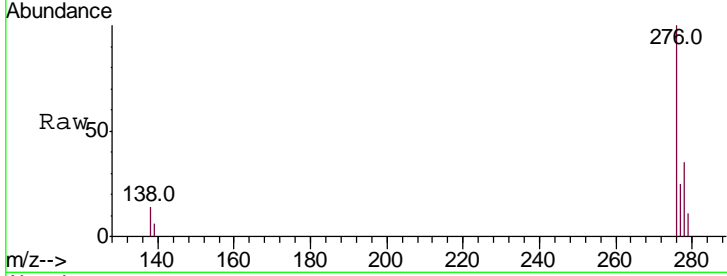
#33
 Indeno(1,2,3-cd)pyrene
 Concen: 0.407 ng
 RT: 26.61 min Scan# 2965
 Delta R.T. -0.00 min
 Lab File: BE099958.D
 Acq: 12 Jun 2019 16:12

Instrument :
 BNA_E
ClientSampled :
 SSTDCCC0.4EC

Tgt Ion	Resp	Lower	Upper
276	100		
138	13.1	10.1	15.1
277	22.4	19.1	28.7

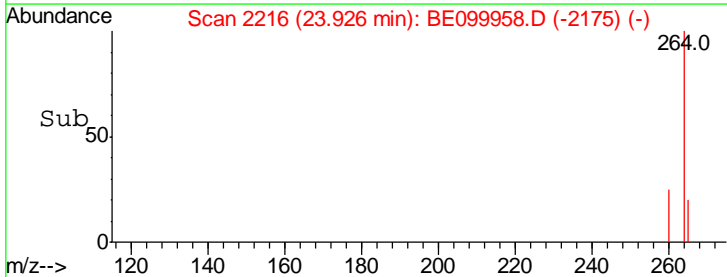
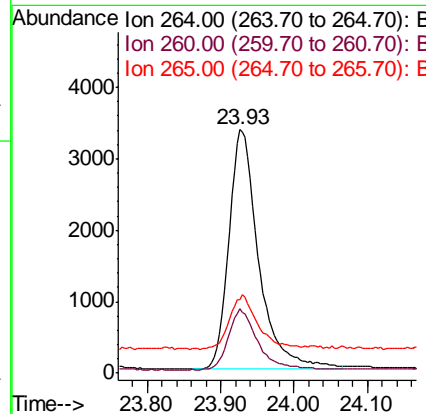
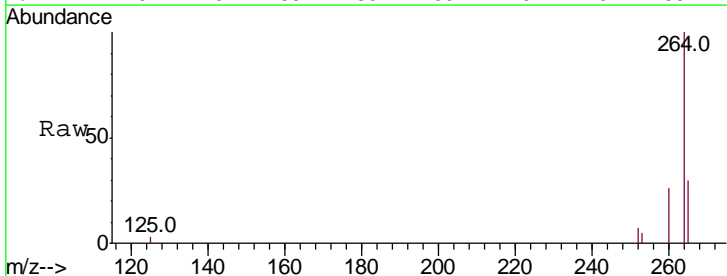
Manual Integrations
APPROVED

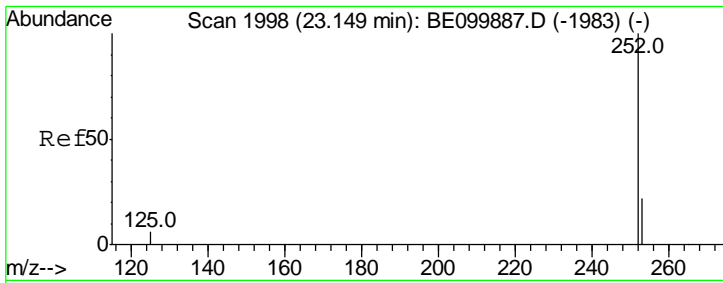
mohammad
 6/14/2019 8:44:55 AM



#34
 Perylene-d12
 Concen: 0.400 ng
 RT: 23.93 min Scan# 2216
 Delta R.T. -0.00 min
 Lab File: BE099958.D
 Acq: 12 Jun 2019 16:12

Tgt Ion	Resp	Lower	Upper
264	100		
260	26.2	20.2	30.2
265	30.3	22.0	33.0



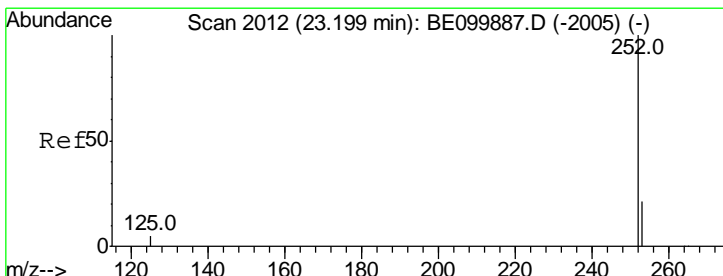
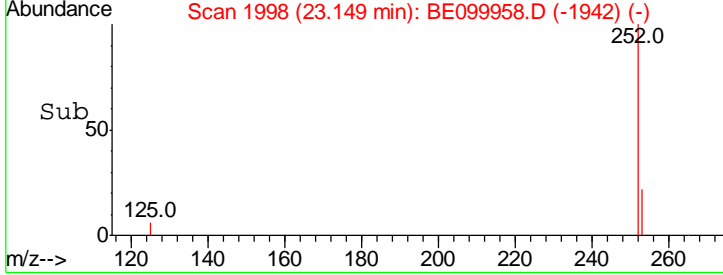
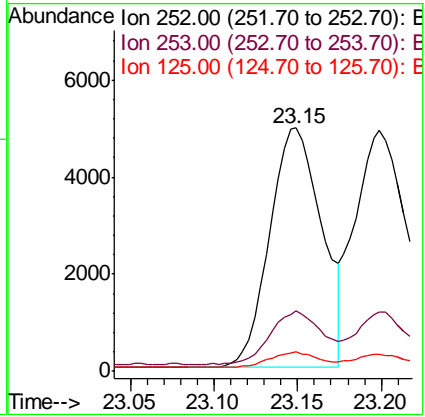
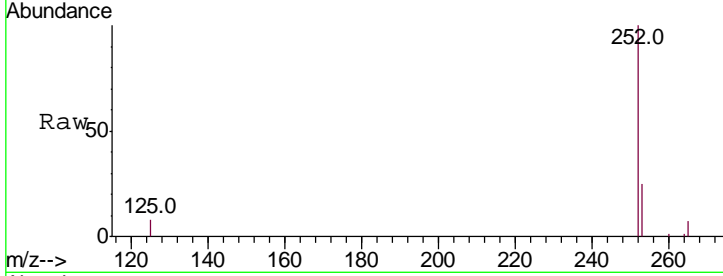


#35
 Benzo(b)fluoranthene
 Concen: 0.399 ng
 RT: 23.15 min Scan# 1998
 Delta R.T. -0.00 min
 Lab File: BE099958.D
 Acq: 12 Jun 2019 16:12

Instrument :
 BNA_E
 ClientSampled :
 SSTDCCC0.4EC

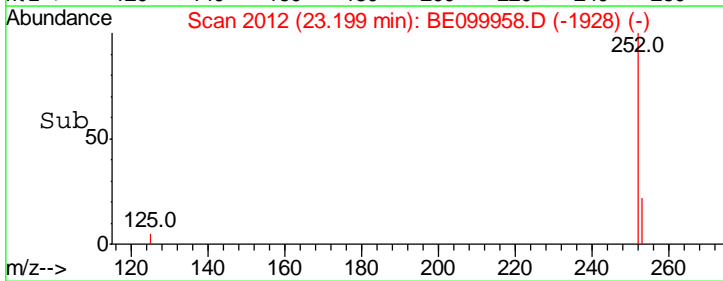
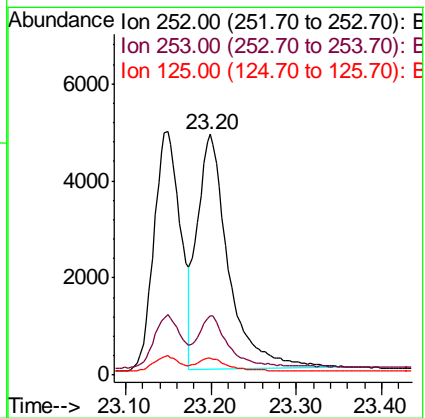
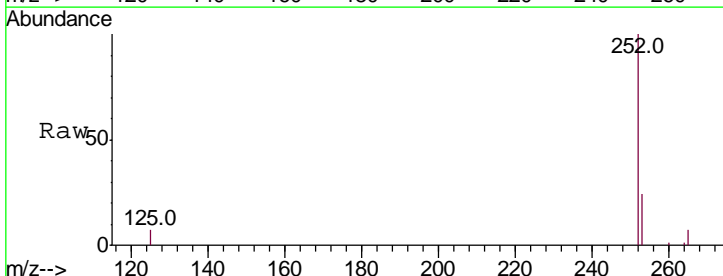
Tgt Ion	Resp	Lower	Upper
252	10698		
253	24.7	18.7	28.1
125	7.9	5.7	8.5

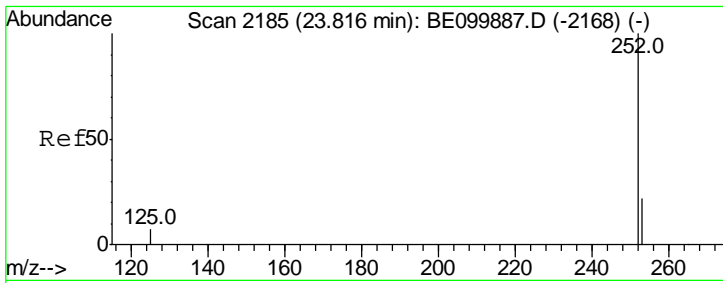
Manual Integrations
 APPROVED
 mohammad
 6/14/2019 8:44:55 AM



#36
 Benzo(k)fluoranthene
 Concen: 0.434 ng
 RT: 23.20 min Scan# 2012
 Delta R.T. -0.00 min
 Lab File: BE099958.D
 Acq: 12 Jun 2019 16:12

Tgt Ion	Resp	Lower	Upper
252	12190		
253	24.5	18.6	28.0
125	6.9	5.4	8.0





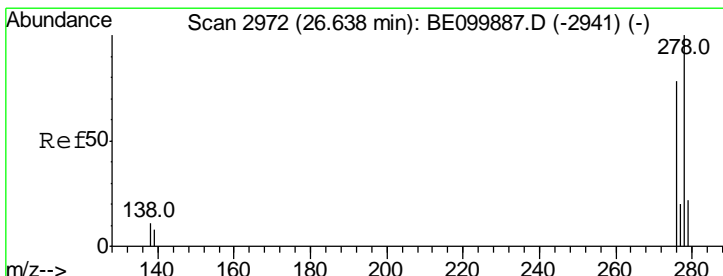
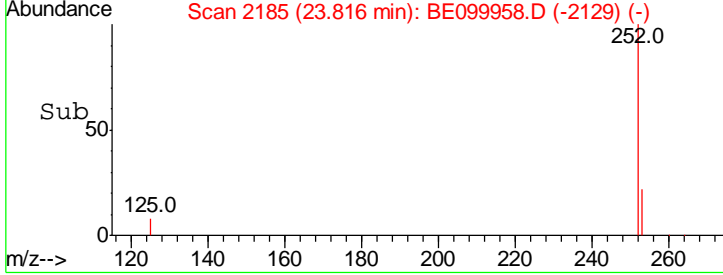
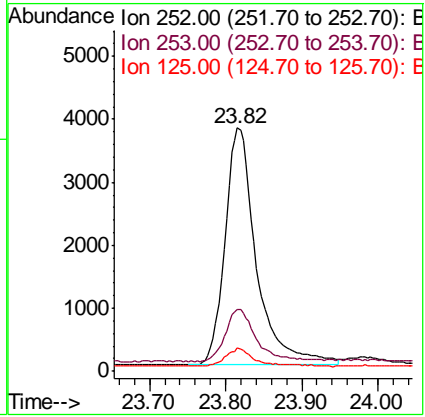
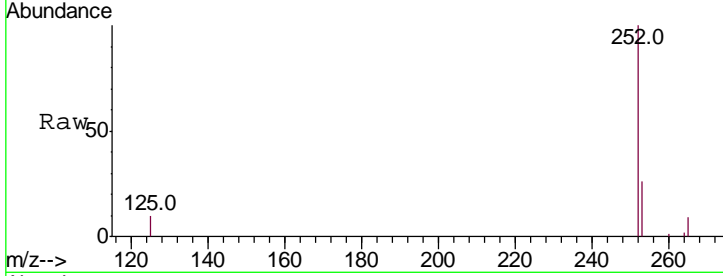
#37
 Benzo(a)pyrene
 Concen: 0.409 ng
 RT: 23.82 min Scan# 2185
 Delta R.T. -0.00 min
 Lab File: BE099958.D
 Acq: 12 Jun 2019 16:12

Instrument :
 BNA_E
 ClientSampled :
 SSTDCCC0.4EC

Tgt Ion	Resp	Lower	Upper
252	10816		
253	25.5	19.6	29.4
125	9.5	6.6	10.0

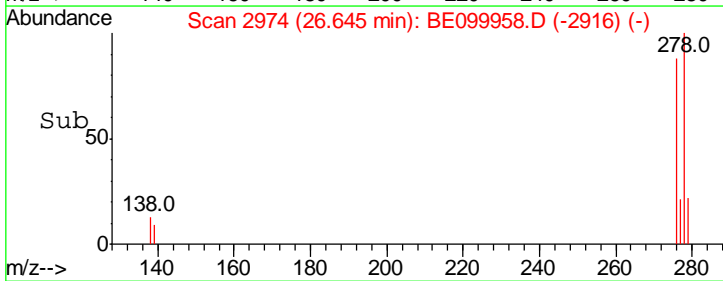
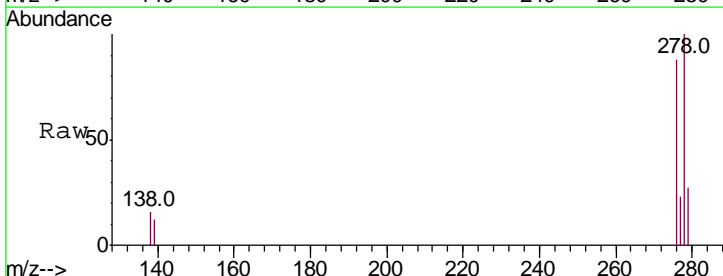
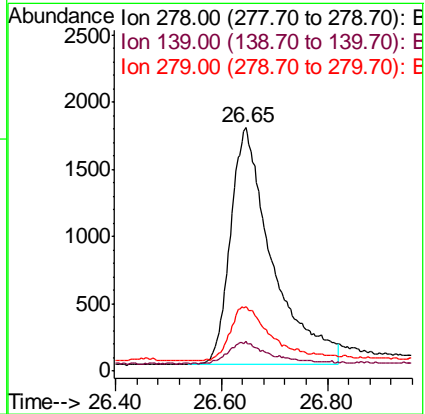
Manual Integrations
 APPROVED

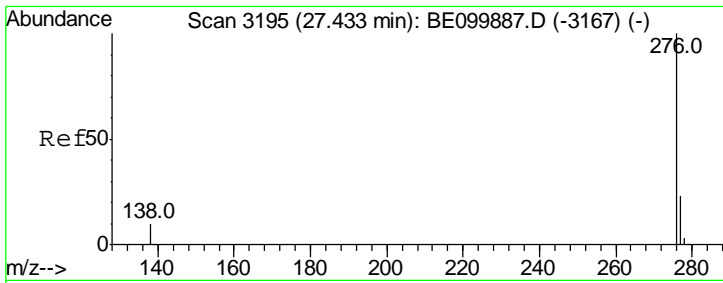
mohammad
 6/14/2019 8:44:55 AM



#38
 Dibenzo(a,h)anthracene
 Concen: 0.365 ng
 RT: 26.65 min Scan# 2974
 Delta R.T. 0.01 min
 Lab File: BE099958.D
 Acq: 12 Jun 2019 16:12

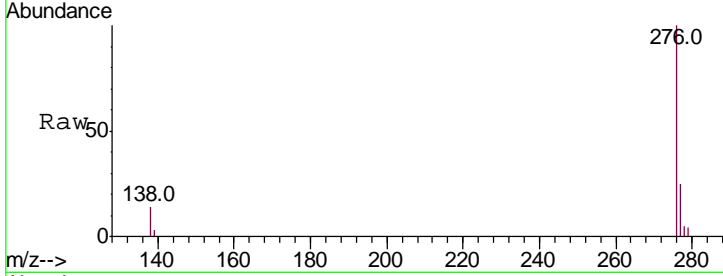
Tgt Ion	Resp	Lower	Upper
278	9711		
139	12.3	7.8	11.8#
279	26.5	20.0	30.0





#39
 Benzo(a,h,i)perylene
 Concen: 0.412 ng
 RT: 27.43 min Scan# 3195
 Delta R.T. 0.00 min
 Lab File: BE099958.D
 Acq: 12 Jun 2019 16:12

Instrument :
 BNA_E
ClientSampled :
 SSTDCCC0.4EC



Tot Ion: 276 Resp: 11331

Ion	Ratio	Lower	Upper
276	100		
277	24.9	19.5	29.3
138	13.9	9.5	14.3

Manual Integrations
APPROVED
 mohammad
 6/14/2019 8:44:55 AM

