

Data Path : Z:\SVOASRV\HPCHEM1\BNA E\DATA\BE062119\  
 Data File : BE100147.D  
 Acq On : 21 Jun 2019 23:47  
 Operator : JU/SJ  
 Sample : K3428-08  
 Misc :  
 ALS Vial : 8 Sample Multiplier: 1

**Instrument :**  
 BNA\_E  
**ClientSampleId :**  
 EXT-013-SW164-061319

**Manual Integrations**  
**APPROVED**  
 mohammad  
 6/25/2019 3:21:29 PM

Quant Time: Jun 22 03:19:46 2019  
 Quant Method : Z:\SVOASRV\HPCHEM1\BNA E\METHODS\8270-SIM-BE061919.M  
 Quant Title : ASP BNA STANDARDS FOR 5 POINT CALIBRATION  
 QLast Update : Wed Jun 19 15:07:24 2019  
 Response via : Initial Calibration

Internal Standards	R.T.	QIon	Response	Conc	Units	Dev(Min)
1) 1,4-Dichlorobenzene-d4	7.74	152	715	0.40	ng	0.00
7) Naphthalene-d8	10.54	136	2700	0.40	ng	0.00
13) Acenaphthene-d10	14.41	164	2463	0.40	ng	0.00
19) Phenanthrene-d10	17.16	188	7533	0.40	ng	0.00
27) Chrysene-d12	21.35	240	10456	0.40	ng	0.01
34) Perylene-d12	23.85	264	13256	0.40	ng	0.00

System Monitoring Compounds

4) 2-Fluorophenol	5.31	112	589	0.40	ng	0.00
5) Phenol-d6	6.92	99	852	0.42	ng	-0.01
8) Nitrobenzene-d5	8.91	82	917	0.35	ng	0.00
11) 2-Methylnaphthalene-d10	12.15	152	149	0.03	ng	0.00
14) 2,4,6-Tribromophenol	15.90	330	633	0.47	ng	-0.01
15) 2-Fluorobiphenyl	13.03	172	2832	0.29	ng	-0.01
25) Fluoranthene-d10	19.20	212	2099	0.02	ng	0.00
29) Terphenyl-d14	19.79	244	7168	0.34	ng	-0.01

Target Compounds

						Qvalue
9) Naphthalene	10.59	128	23553	0.803	ng	98
12) 2-Methylnaphthalene	12.22	142	3627	0.752	ng	95
16) Acenaphthylene	14.14	152	23604	2.019	ng	99
17) Acenaphthene	14.47	154	5893	0.901	ng	97
18) Fluorene	15.46	166	15296	1.571	ng	# 94
22) Pentachlorophenol	16.81	266	111m	0.311	ng	
23) Phenanthrene	17.20	178	345180	19.125	ng	99
24) Anthracene	17.29	178	53913	3.542	ng	# 95
26) Fluoranthene	19.23	202	807983	27.888	ng	98
28) Pyrene	19.59	202	835641	31.094	ng	# 95
30) Benzo(a)anthracene	21.33	228	528444	16.989	ng	99
31) Chrysene	21.39	228	548892	15.187	ng	98
32) Bis(2-ethylhexyl)phthalate	21.25	149	313752	10.690	ng	100
33) Indeno(1,2,3-cd)pyrene	26.49	276	369233	9.079	ng	# 98
35) Benzo(b)fluoranthene	23.08	252	644125	16.559	ng	# 97
36) Benzo(k)fluoranthene	23.13	252	257377m	5.816	ng	
37) Benzo(a)pyrene	23.74	252	480410	12.794	ng	# 94
38) Dibenzo(a,h)anthracene	26.51	278	96008	2.494	ng	# 94
39) Benzo(q,h,i)perylene	27.32	276	380210	9.506	ng	# 95

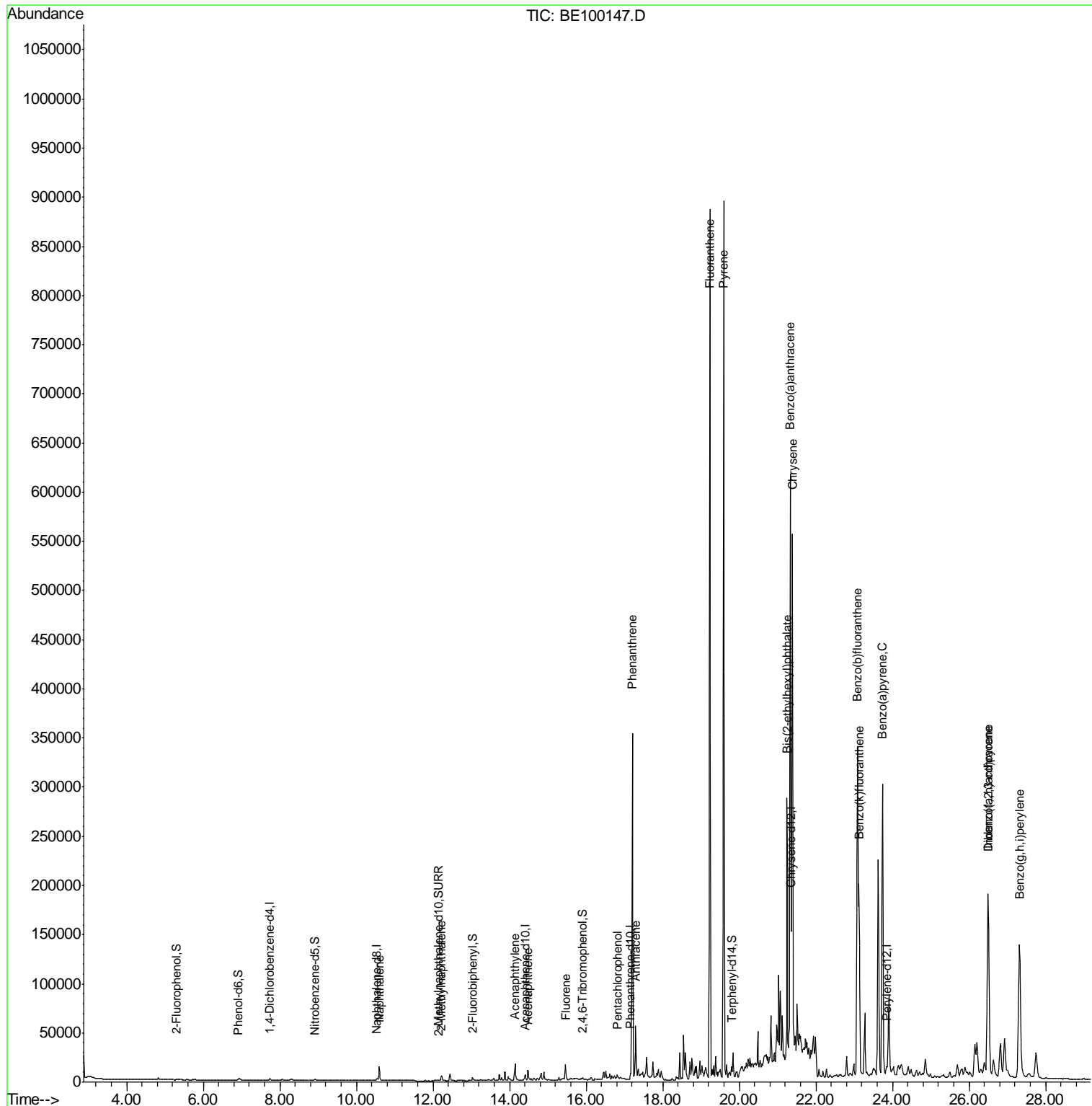
(#) = qualifier out of range (m) = manual integration (+) = signals summed

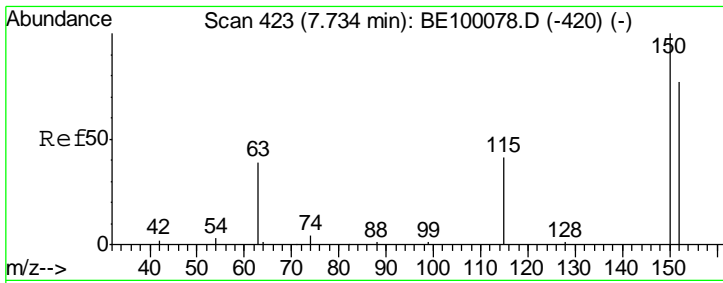
Data Path : Z:\SVOASRV\HPCHEM1\BNA E\DATA\BE062119\  
 Data File : BE100147.D  
 Acq On : 21 Jun 2019 23:47  
 Operator : JU/SJ  
 Sample : K3428-08  
 Misc :  
 ALS Vial : 8 Sample Multiplier: 1

Instrument :  
 BNA\_E  
 Client Sampled :  
 EXT-013-SW164-061319

Manual Integrations  
 APPROVED  
 mohammad  
 6/25/2019 3:21:29 PM

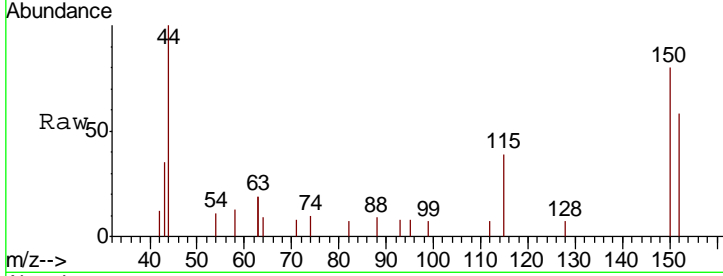
Quant Time: Jun 22 03:19:46 2019  
 Quant Method : Z:\SVOASRV\HPCHEM1\BNA E\METHODS\8270-SIM-BE061919.M  
 Quant Title : ASP BNA STANDARDS FOR 5 POINT CALIBRATION  
 QLast Update : Wed Jun 19 15:07:24 2019  
 Response via : Initial Calibration





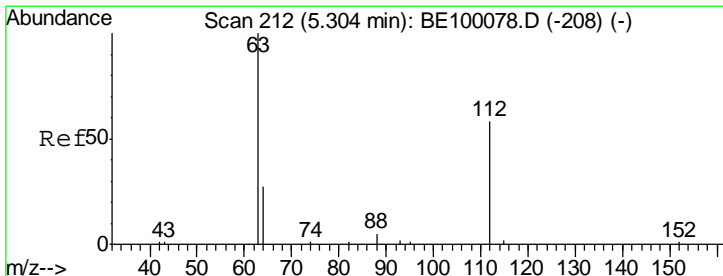
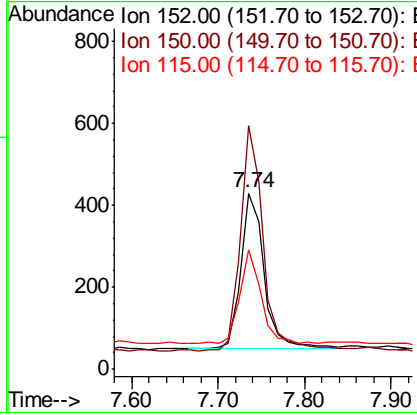
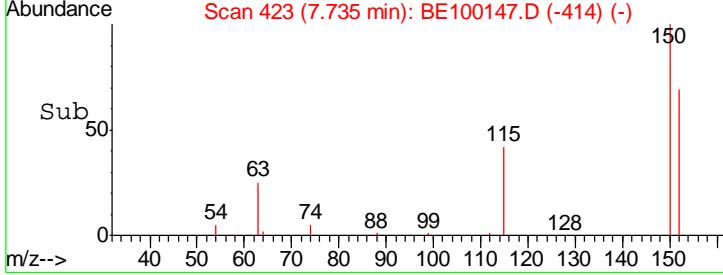
#1  
 1,4-Dichlorobenzene-d4  
 Concen: 0.400 ng  
 RT: 7.74 min Scan# 423  
 Delta R.T. 0.00 min  
 Lab File: BE100147.D  
 Acq: 21 Jun 2019 23:47

**Instrument :**  
 BNA\_E  
**ClientSampled :**  
 EXT-013-SW164-061319

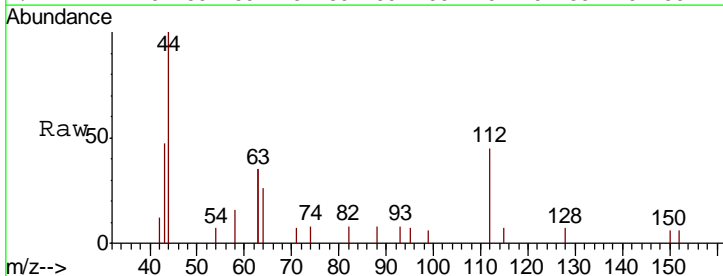


Tgt Ion	Resp	Lower	Upper
152	100		
150	138.1	99.8	149.8
115	67.7	51.3	76.9

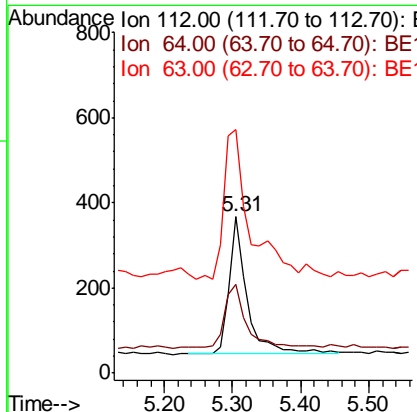
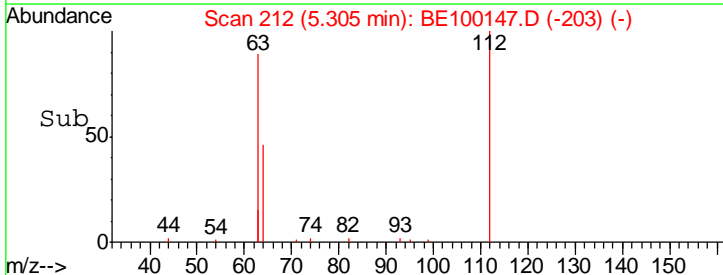
**Manual Integrations**  
**APPROVED**  
 mohammad  
 6/25/2019 3:21:29 PM

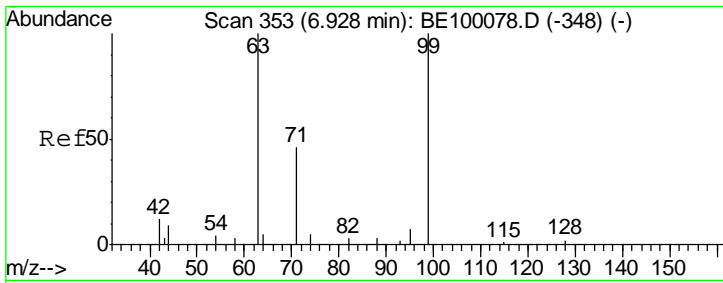


#4  
 2-Fluorophenol  
 Concen: 0.397 ng  
 RT: 5.31 min Scan# 212  
 Delta R.T. 0.00 min  
 Lab File: BE100147.D  
 Acq: 21 Jun 2019 23:47



Tgt Ion	Resp	Lower	Upper
112	100		
64	56.5	22.0	33.0#
63	157.0	121.8	182.6



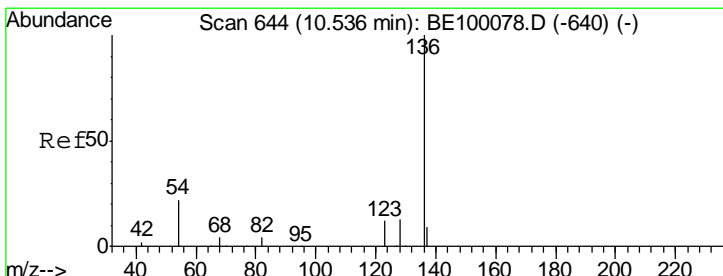
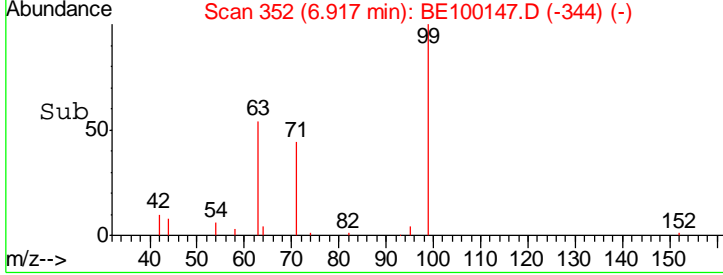
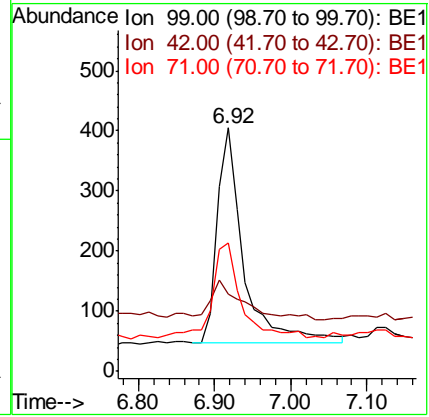
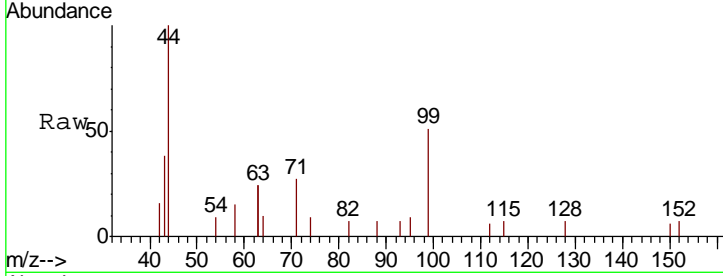


#5  
 Phenol-d6  
 Concen: 0.418 ng  
 RT: 6.92 min Scan# 352  
 Delta R.T. -0.01 min  
 Lab File: BE100147.D  
 Acq: 21 Jun 2019 23:47

**Instrument :**  
 BNA\_E  
**Client Sampled :**  
 EXT-013-SW164-061319

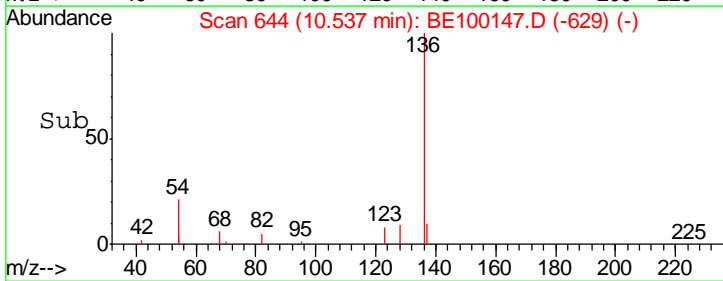
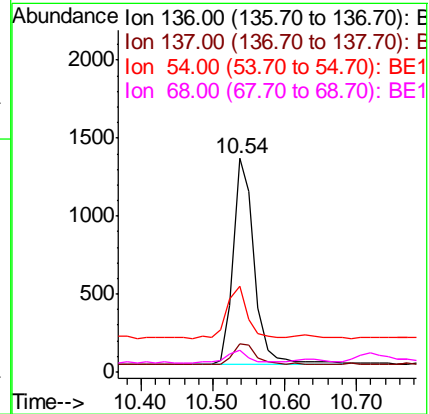
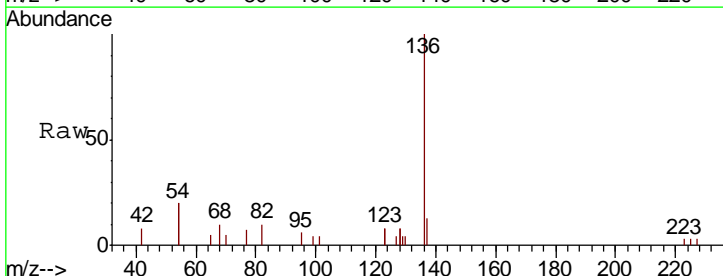
Tgt Ion	Resp	Lower	Upper
99	852		
99	100		
42	16.1	0.0	0.0#
71	46.6	37.6	56.4

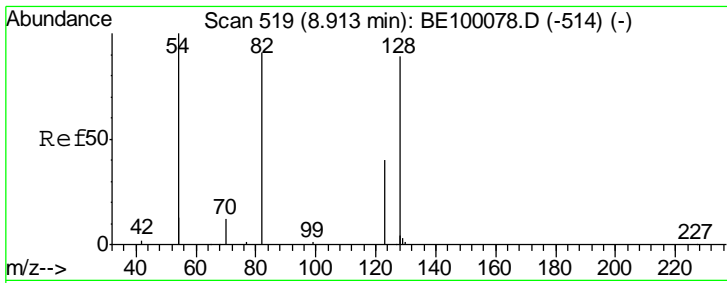
**Manual Integrations**  
**APPROVED**  
 mohammad  
 6/25/2019 3:21:29 PM



#7  
 Naphthalene-d8  
 Concen: 0.400 ng  
 RT: 10.54 min Scan# 644  
 Delta R.T. 0.00 min  
 Lab File: BE100147.D  
 Acq: 21 Jun 2019 23:47

Tgt Ion	Resp	Lower	Upper
136	2700		
136	100		
137	13.1	11.6	17.4
54	40.0	33.9	50.9
68	10.0	7.8	11.8





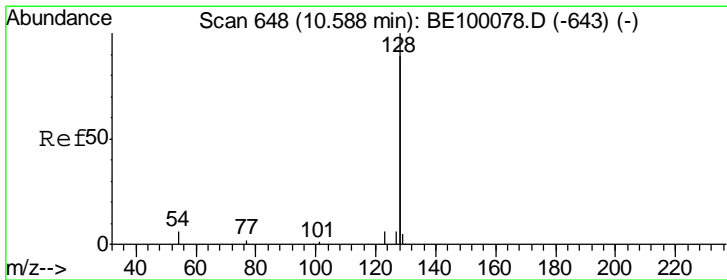
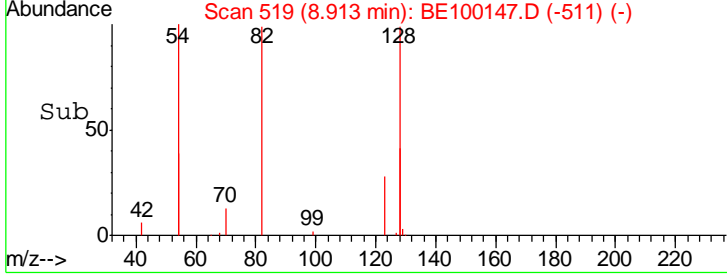
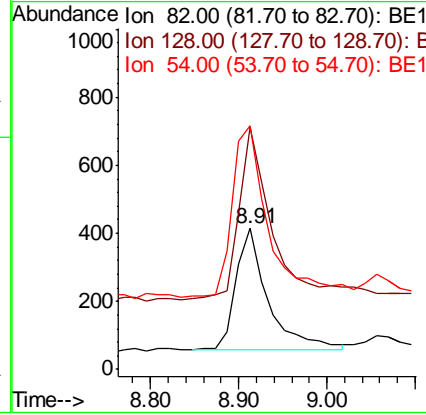
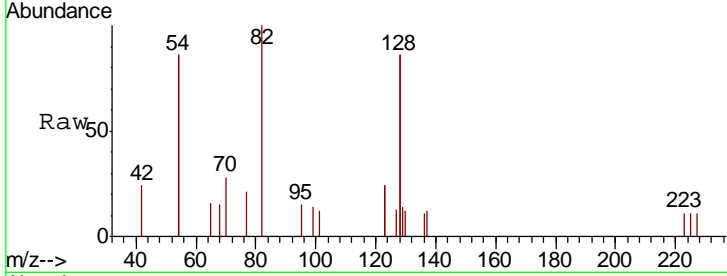
#8  
 Nitrobenzene-d5  
 Concen: 0.350 ng  
 RT: 8.91 min Scan# 519  
 Delta R.T. 0.00 min  
 Lab File: BE100147.D  
 Acq: 21 Jun 2019 23:47

**Instrument :**  
 BNA\_E  
**ClientSampleId :**  
 EXT-013-SW164-061319

Tgt Ion	Resp	Lower	Upper
82	100		
128	172.0	128.0	192.0
54	172.9	143.4	215.0

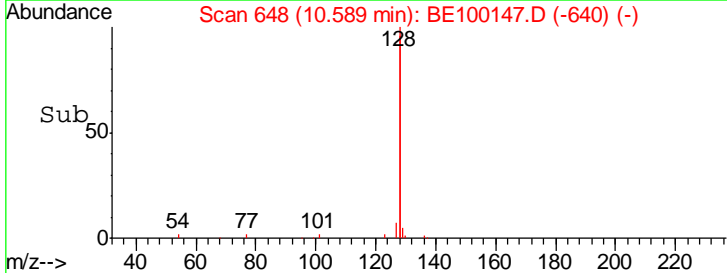
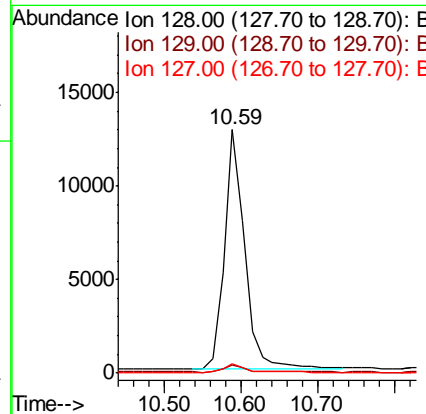
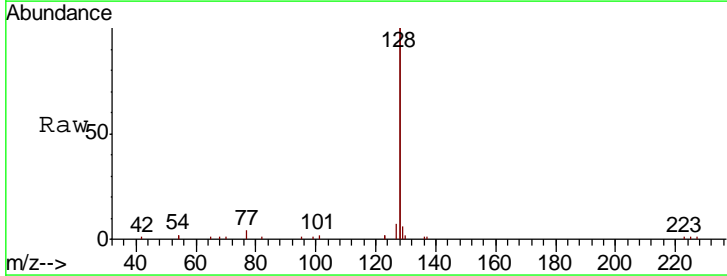
**Manual Integrations**  
**APPROVED**

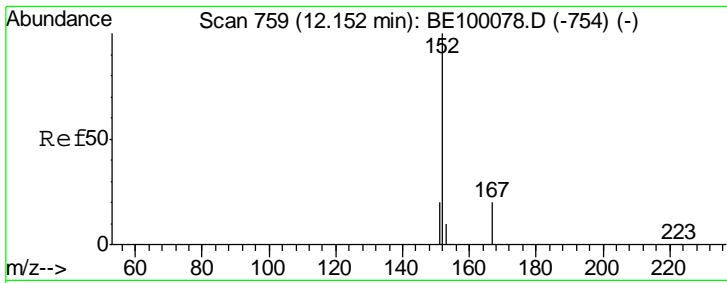
mohammad  
 6/25/2019 3:21:29 PM



#9  
 Naphthalene  
 Concen: 0.803 ng  
 RT: 10.59 min Scan# 648  
 Delta R.T. 0.00 min  
 Lab File: BE100147.D  
 Acq: 21 Jun 2019 23:47

Tgt Ion	Resp	Lower	Upper
128	100		
129	3.2	3.1	4.7
127	3.7	3.4	5.2



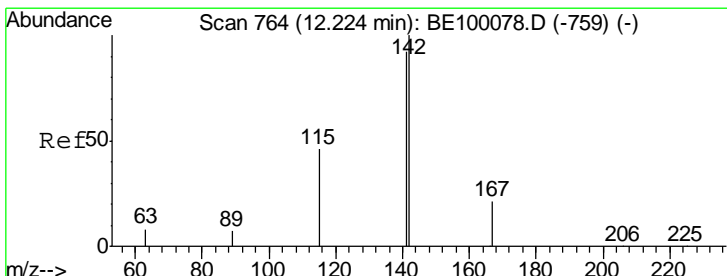
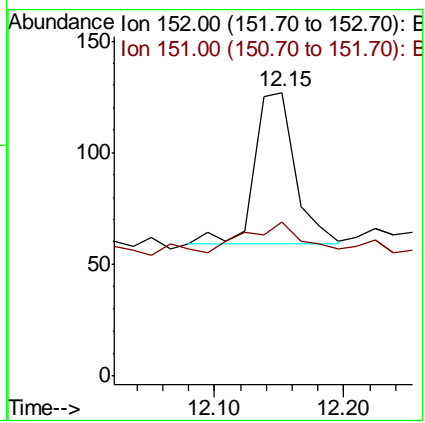
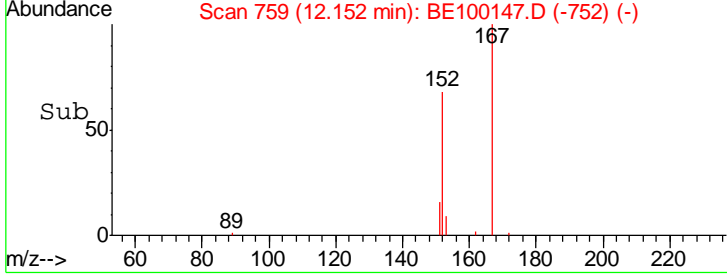
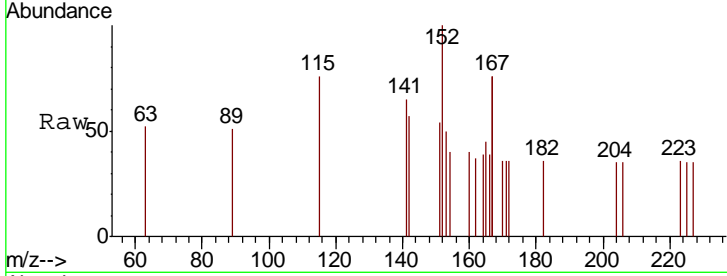


#11  
 2-Methylnaphthalene-d10  
 Concen: 0.029 ng  
 RT: 12.15 min Scan# 759  
 Delta R.T. 0.00 min  
 Lab File: BE100147.D  
 Acq: 21 Jun 2019 23:47

**Instrument :**  
 BNA\_E  
**ClientSampled :**  
 EXT-013-SW164-061319

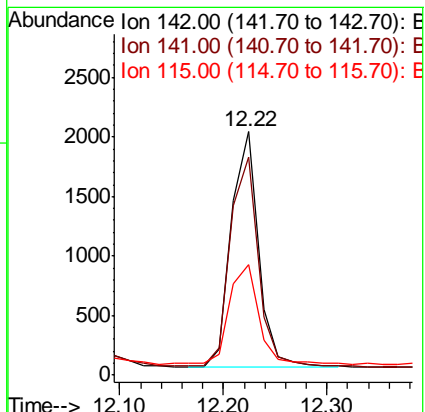
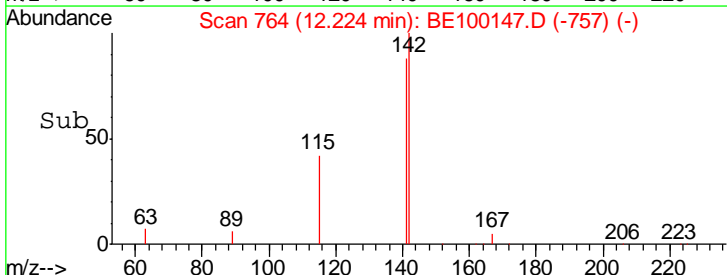
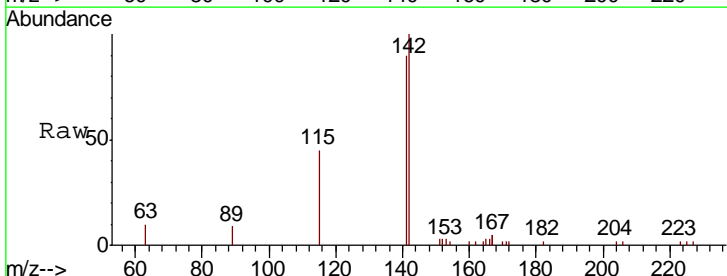
Tgt Ion	Resp	Lower	Upper
152	100		
151	27.5	16.3	24.5#

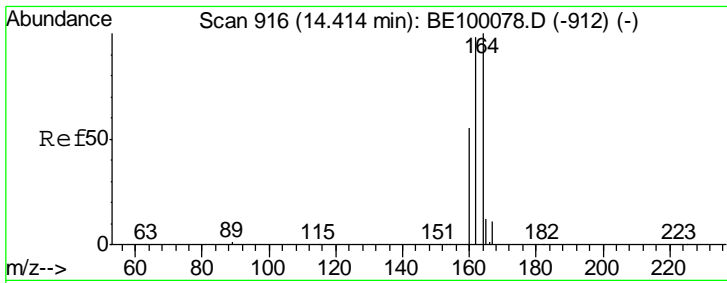
**Manual Integrations**  
**APPROVED**  
 mohammad  
 6/25/2019 3:21:29 PM



#12  
 2-Methylnaphthalene  
 Concen: 0.752 ng  
 RT: 12.22 min Scan# 764  
 Delta R.T. 0.00 min  
 Lab File: BE100147.D  
 Acq: 21 Jun 2019 23:47

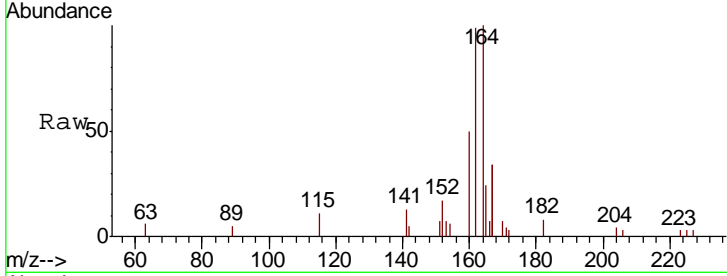
Tgt Ion	Resp	Lower	Upper
142	100		
141	89.7	74.1	111.1
115	45.2	40.9	61.3





#13  
 Acenaphthene-d10  
 Concen: 0.400 ng  
 RT: 14.41 min Scan# 916  
 Delta R.T. 0.00 min  
 Lab File: BE100147.D  
 Acq: 21 Jun 2019 23:47

**Instrument :**  
 BNA\_E  
**ClientSampled :**  
 EXT-013-SW164-061319

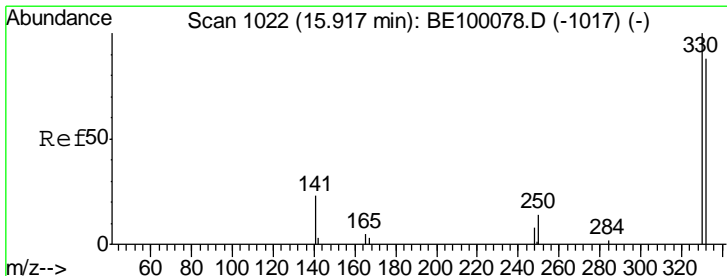
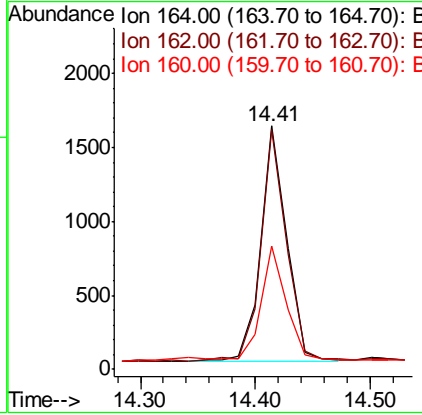
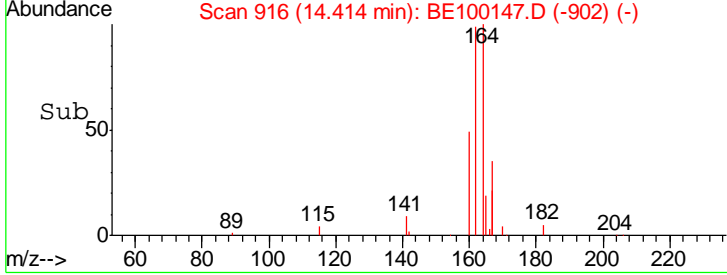


Tgt Ion: 164 Resp: 2463

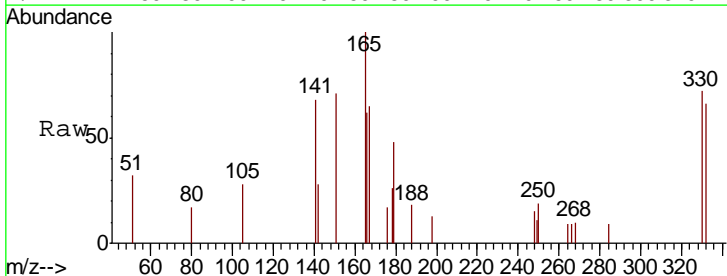
Ion	Ratio	Lower	Upper
164	100		
162	98.7	78.2	117.2
160	50.4	45.6	68.4

**Manual Integrations**  
**APPROVED**

mohammad  
 6/25/2019 3:21:29 PM

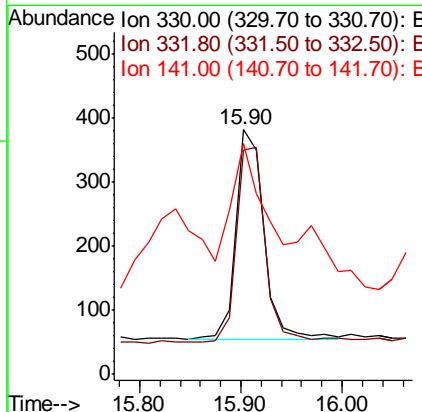
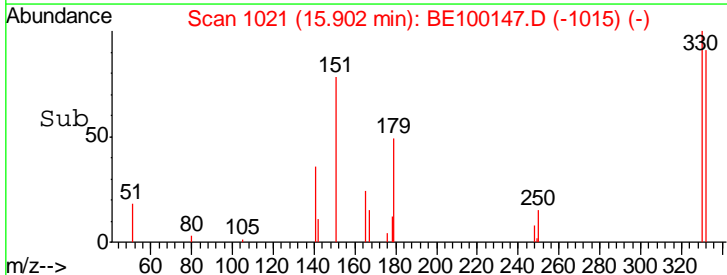


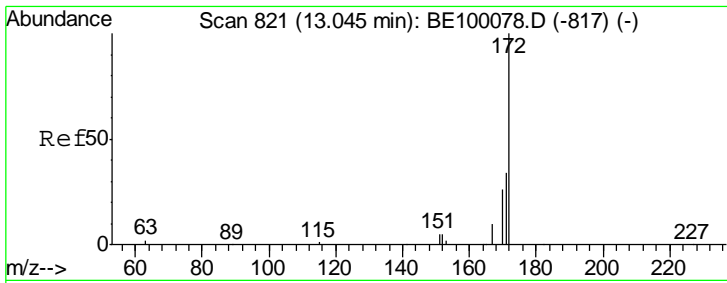
#14  
 2,4,6-Tribromophenol  
 Concen: 0.465 ng  
 RT: 15.90 min Scan# 1021  
 Delta R.T. -0.01 min  
 Lab File: BE100147.D  
 Acq: 21 Jun 2019 23:47



Tgt Ion: 330 Resp: 633

Ion	Ratio	Lower	Upper
330	100		
332	97.9	73.3	109.9
141	123.5	22.2	33.2#





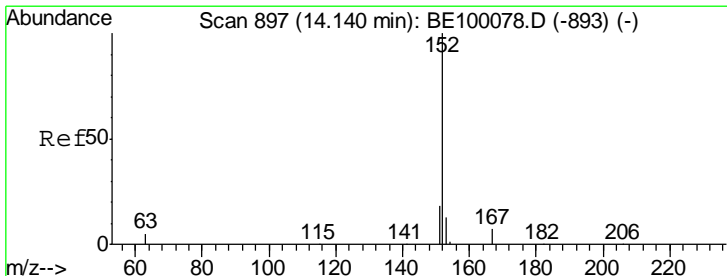
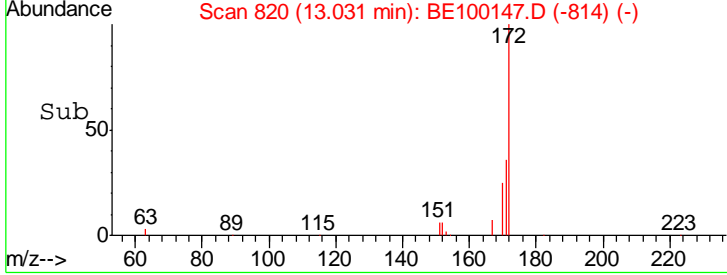
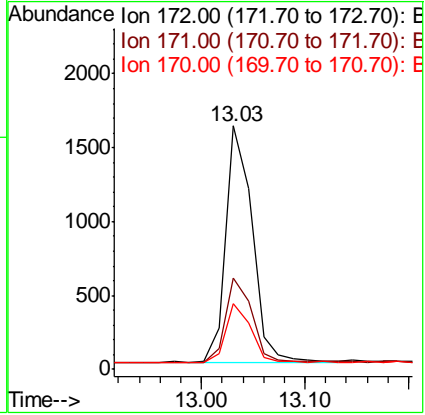
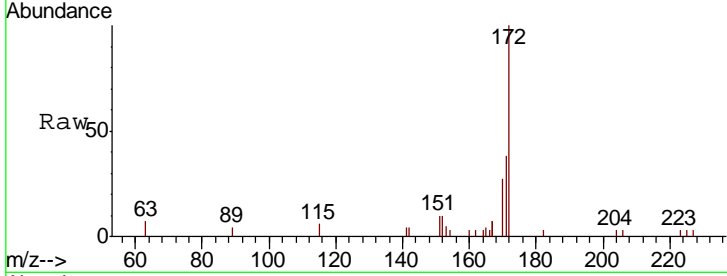
#15  
 2-Fluorobiphenyl  
 Concen: 0.292 ng  
 RT: 13.03 min Scan# 820  
 Delta R.T. -0.01 min  
 Lab File: BE100147.D  
 Acq: 21 Jun 2019 23:47

**Instrument :**  
 BNA\_E  
**ClientSampled :**  
 EXT-013-SW164-061319

Tgt Ion	Resp	Lower	Upper
172	2832		
171	37.7	29.8	44.8
170	27.1	23.2	34.8

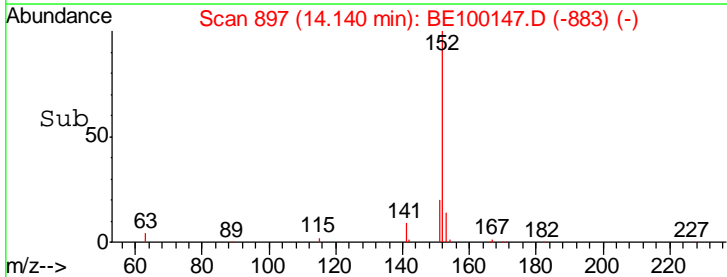
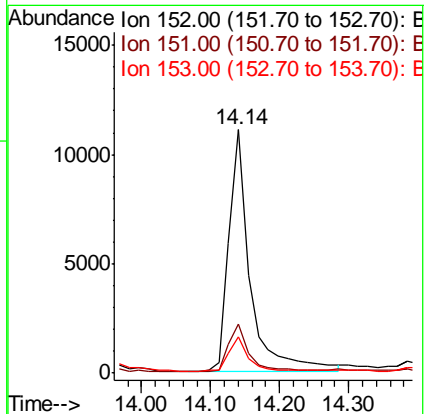
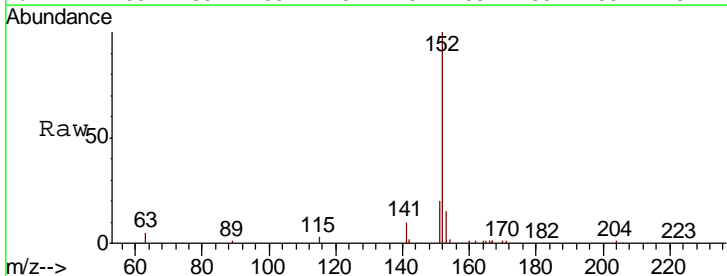
**Manual Integrations**  
**APPROVED**

mohammad  
 6/25/2019 3:21:29 PM

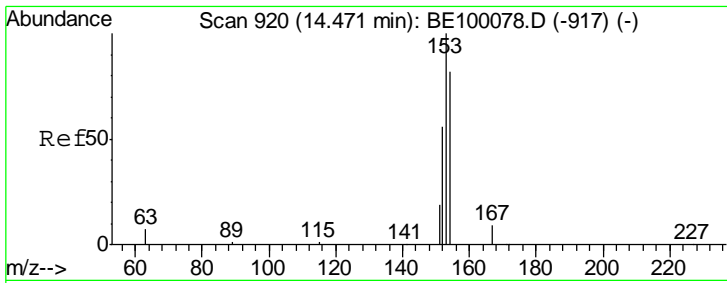


#16  
 Acenaphthylene  
 Concen: 2.019 ng  
 RT: 14.14 min Scan# 897  
 Delta R.T. 0.00 min  
 Lab File: BE100147.D  
 Acq: 21 Jun 2019 23:47

Tgt Ion	Resp	Lower	Upper
152	23604		
151	19.8	15.9	23.9
153	13.5	10.1	15.1







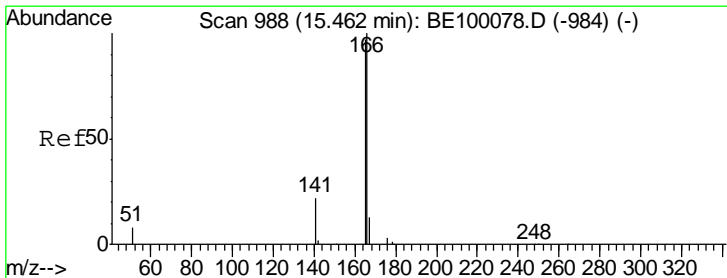
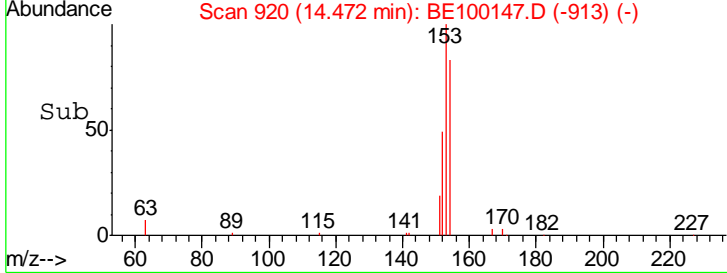
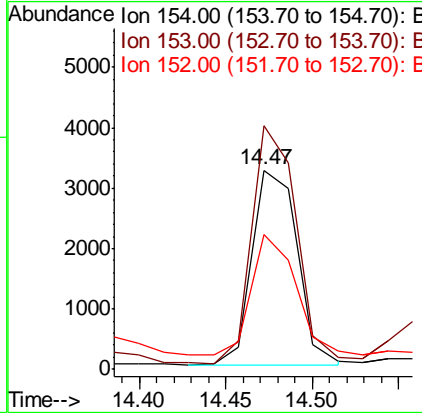
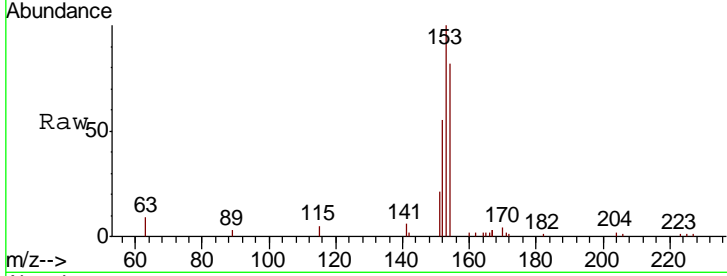
#17  
 Acenaphthene  
 Concen: 0.901 ng  
 RT: 14.47 min Scan# 920  
 Delta R.T. 0.00 min  
 Lab File: BE100147.D  
 Acq: 21 Jun 2019 23:47

Instrument :  
 BNA\_E  
 ClientSampled :  
 EXT-013-SW164-061319

Tgt Ion	Resp	Lower	Upper
154	100		
153	119.5	95.5	143.3
152	61.1	54.9	82.3

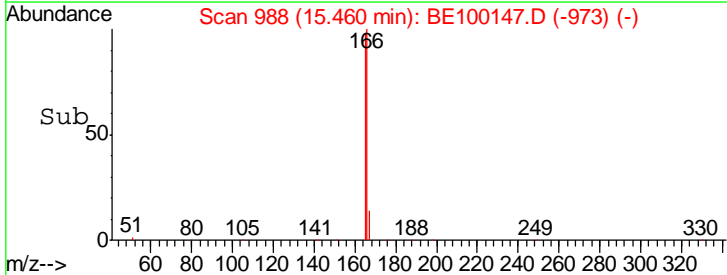
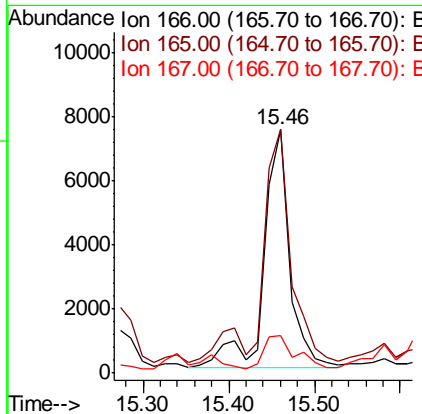
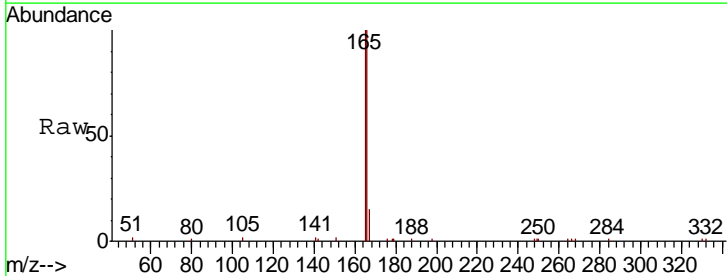
Manual Integrations  
 APPROVED

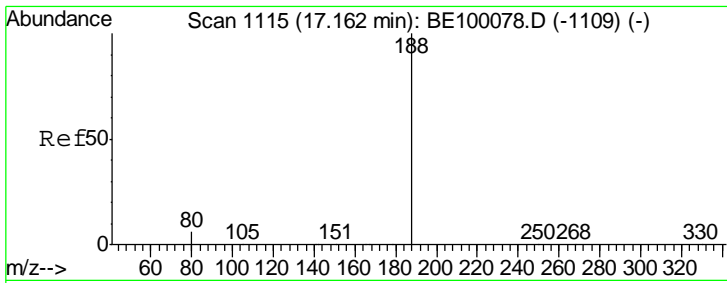
mohammad  
 6/25/2019 3:21:29 PM



#18  
 Fluorene  
 Concen: 1.571 ng  
 RT: 15.46 min Scan# 988  
 Delta R.T. -0.00 min  
 Lab File: BE100147.D  
 Acq: 21 Jun 2019 23:47

Tgt Ion	Resp	Lower	Upper
166	100		
165	94.4	79.8	119.8
167	16.8	10.2	15.4#



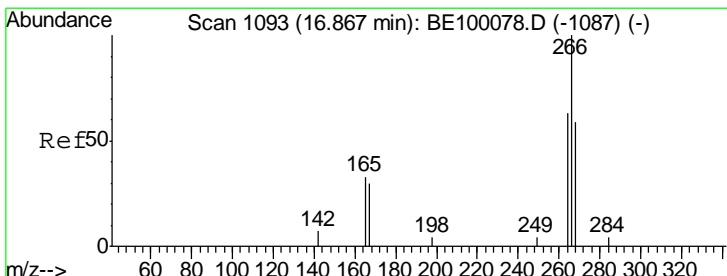
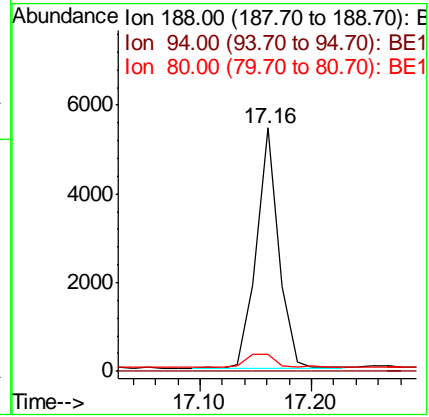
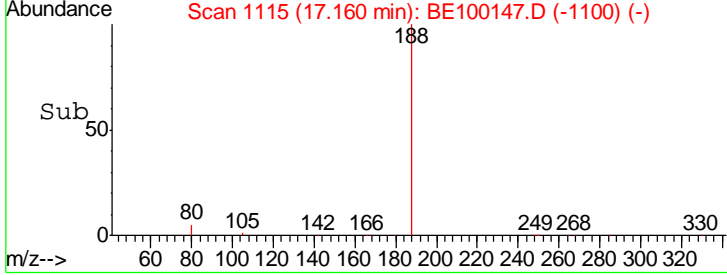
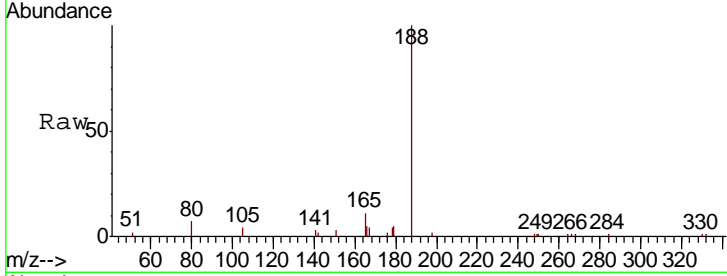


#19  
 Phenanthrene-d10  
 Concen: 0.400 ng  
 RT: 17.16 min Scan# 1115  
 Delta R.T. -0.00 min  
 Lab File: BE100147.D  
 Acq: 21 Jun 2019 23:47

Instrument :  
 BNA\_E  
 ClientSampled :  
 EXT-013-SW164-061319

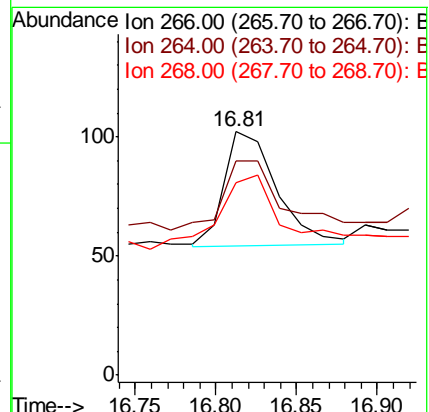
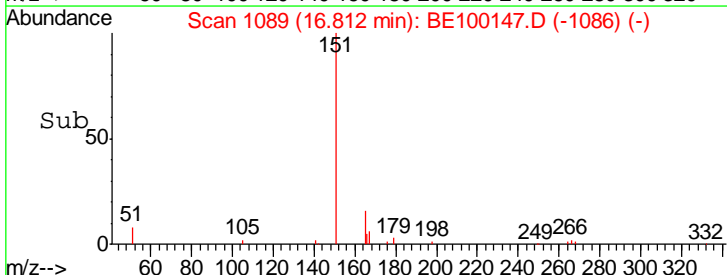
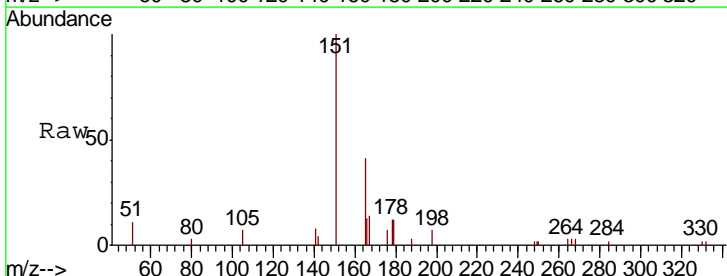
Tgt Ion	Ratio	Lower	Upper
188	100		
94	0.0	0.0	0.0
80	7.0	6.3	9.5

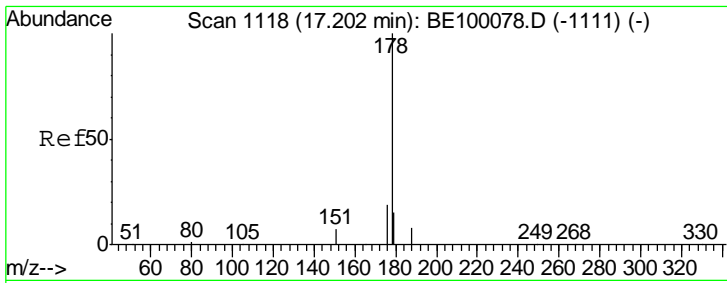
Manual Integrations  
**APPROVED**  
 mohammad  
 6/25/2019 3:21:29 PM



#22  
 Pentachlorophenol  
 Concen: 0.311 ng m  
 RT: 16.81 min Scan# 1089  
 Delta R.T. -0.05 min  
 Lab File: BE100147.D  
 Acq: 21 Jun 2019 23:47

Tgt Ion	Ratio	Lower	Upper
266	100		
264	88.2	67.8	101.6
268	79.4	70.0	105.0





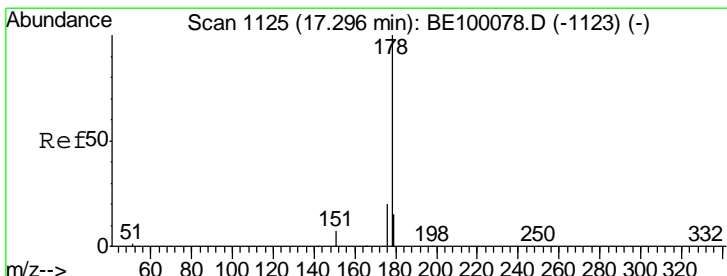
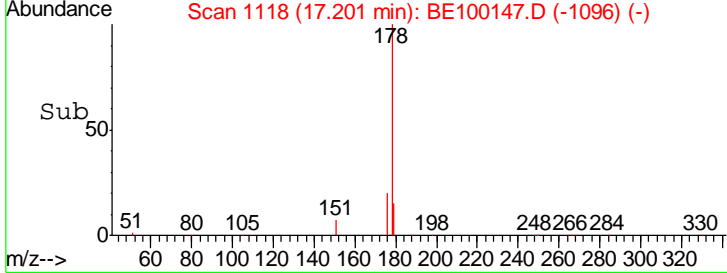
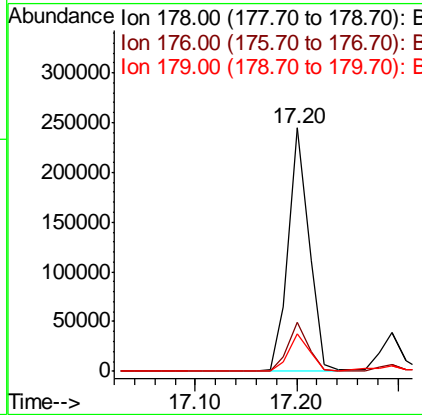
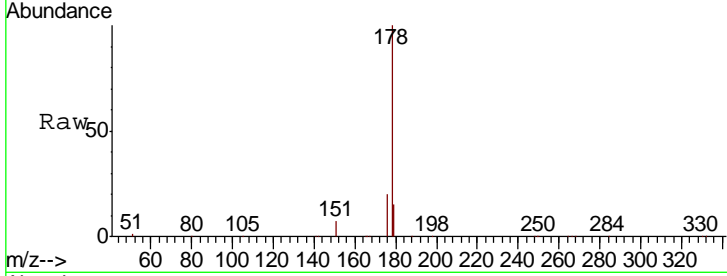
#23  
 Phenanthrene  
 Concen: 19.125 ng  
 RT: 17.20 min Scan# 1118  
 Delta R.T. -0.00 min  
 Lab File: BE100147.D  
 Acq: 21 Jun 2019 23:47

Instrument :  
 BNA\_E  
 ClientSampled :  
 EXT-013-SW164-061319

Tgt Ion	Resp	Lower	Upper
178	345180		
176	20.0	15.9	23.9
179	15.7	13.1	19.7

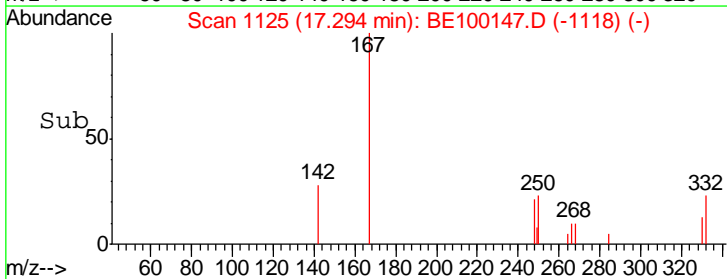
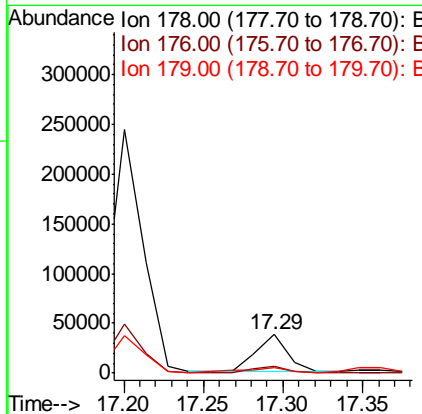
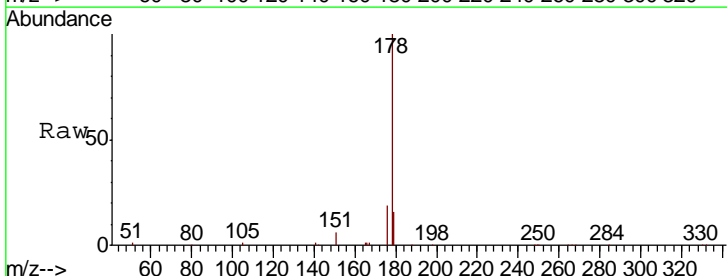
Manual Integrations  
 APPROVED

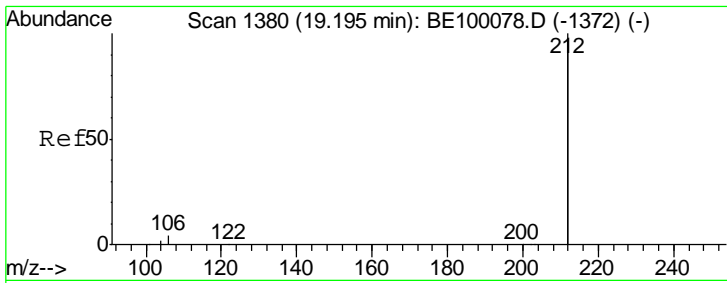
mohammad  
 6/25/2019 3:21:29 PM



#24  
 Anthracene  
 Concen: 3.542 ng  
 RT: 17.29 min Scan# 1125  
 Delta R.T. -0.00 min  
 Lab File: BE100147.D  
 Acq: 21 Jun 2019 23:47

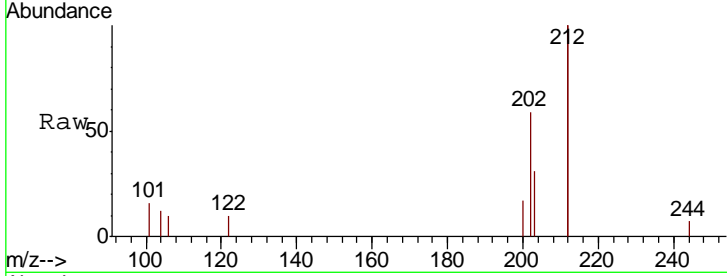
Tgt Ion	Resp	Lower	Upper
178	53913		
176	19.1	15.8	23.6
179	19.5	12.0	18.0#





#25  
 Fluoranthene-d10  
 Concen: 0.019 ng  
 RT: 19.20 min Scan# 1380  
 Delta R.T. 0.00 min  
 Lab File: BE100147.D  
 Acq: 21 Jun 2019 23:47

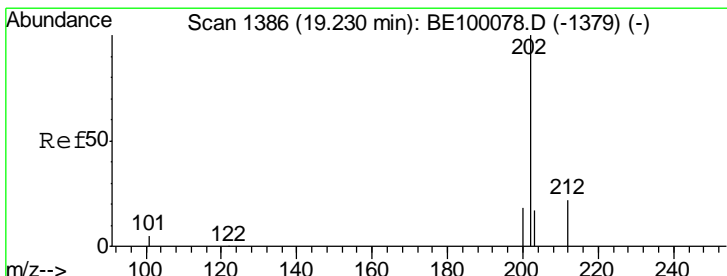
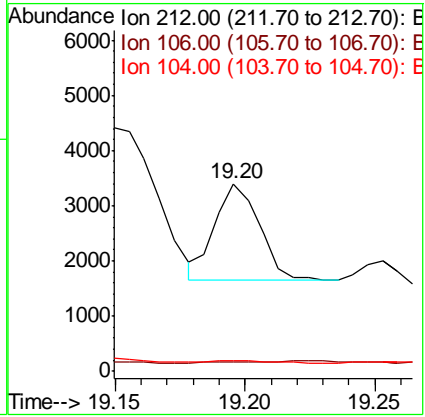
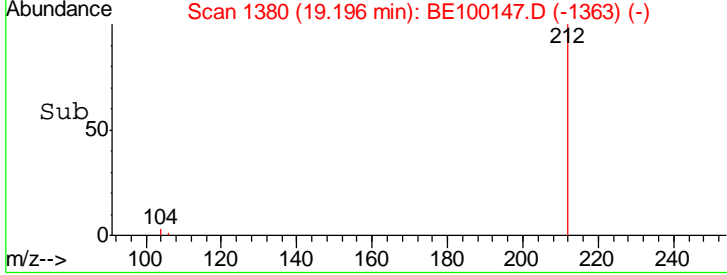
**Instrument :**  
 BNA\_E  
**ClientSampled :**  
 EXT-013-SW164-061319



Tgt Ion: 212 Resp: 2099

Ion	Ratio	Lower	Upper
212	100		
106	1.6	1.4	2.0
104	3.1	0.8	1.2#

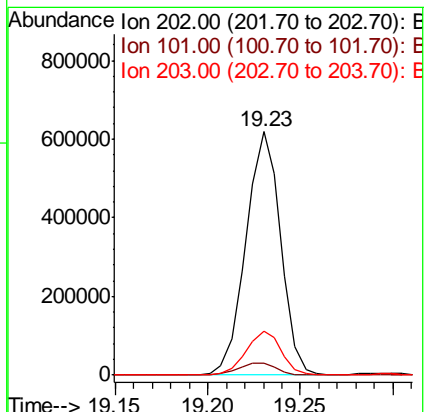
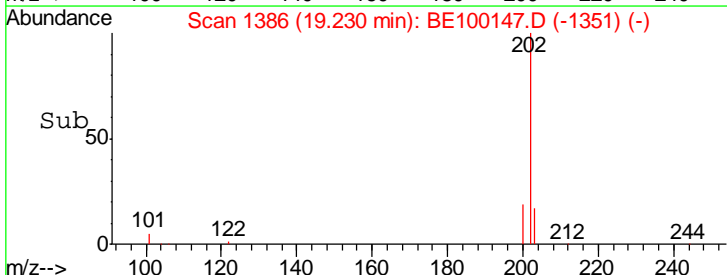
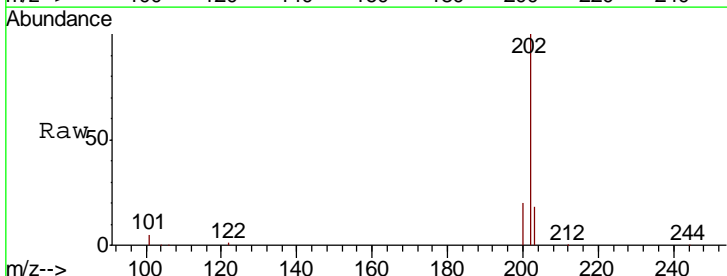
**Manual Integrations**  
**APPROVED**  
 mohammad  
 6/25/2019 3:21:29 PM

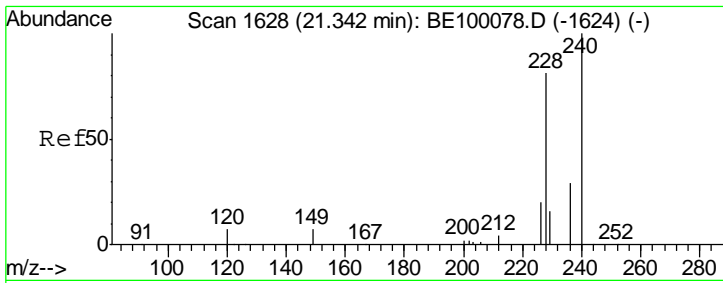


#26  
 Fluoranthene  
 Concen: 27.888 ng  
 RT: 19.23 min Scan# 1386  
 Delta R.T. 0.00 min  
 Lab File: BE100147.D  
 Acq: 21 Jun 2019 23:47

Tgt Ion: 202 Resp: 807983

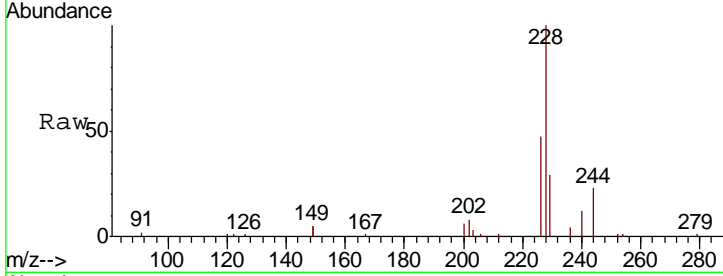
Ion	Ratio	Lower	Upper
202	100		
101	5.3	5.0	7.4
203	17.9	13.7	20.5





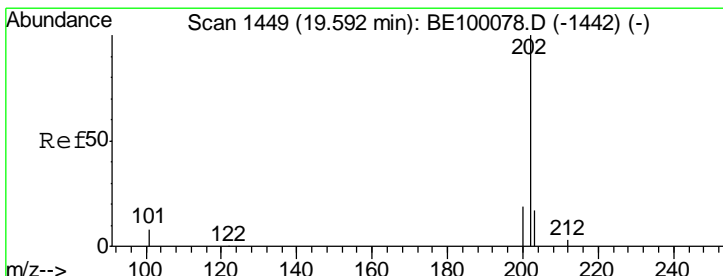
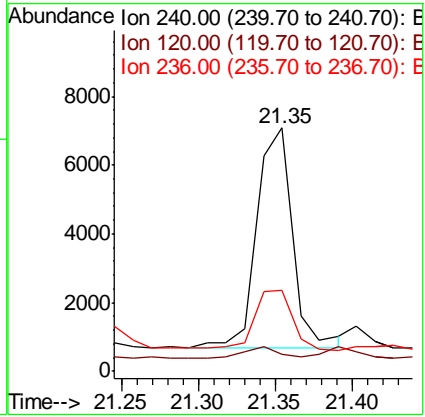
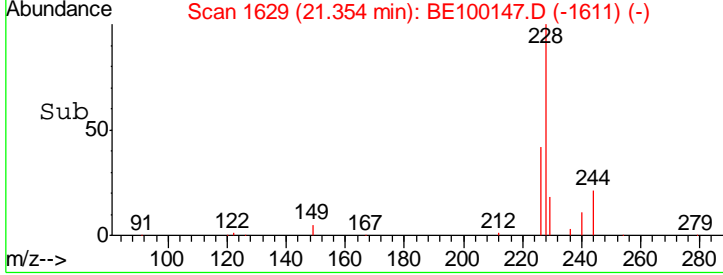
#27  
 Chrysene-d12  
 Concen: 0.400 ng  
 RT: 21.35 min Scan# 1629  
 Delta R.T. 0.01 min  
 Lab File: BE100147.D  
 Acq: 21 Jun 2019 23:47

**Instrument :**  
 BNA\_E  
**ClientSampled :**  
 EXT-013-SW164-061319



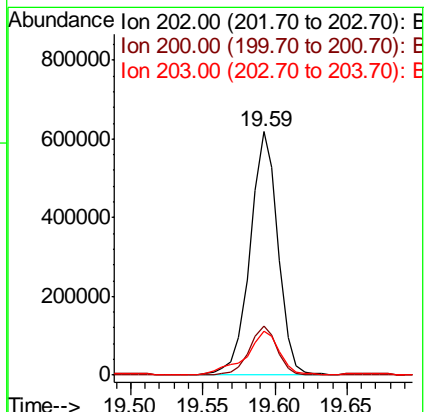
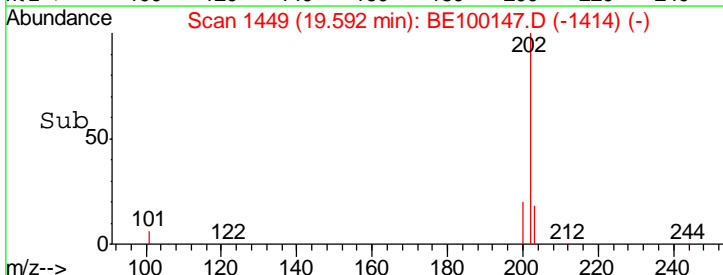
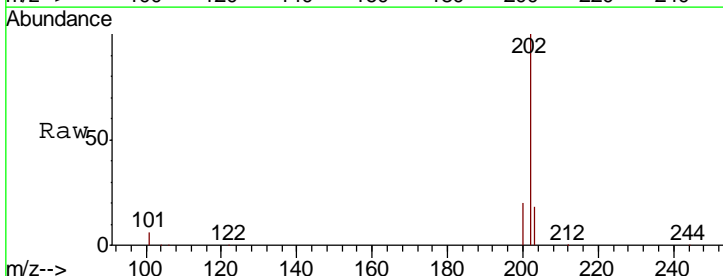
Tgt Ion	Resp	Lower	Upper
240	10456		
240	100		
120	6.8	6.6	10.0
236	33.2	23.8	35.6

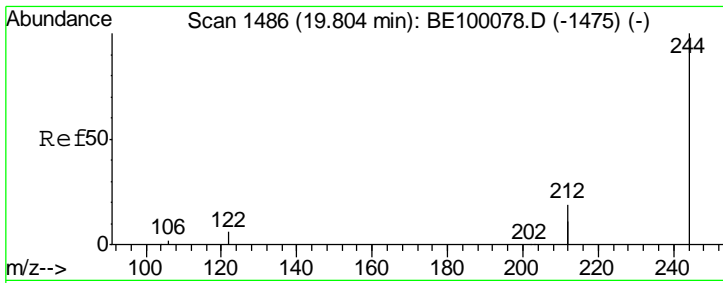
**Manual Integrations**  
**APPROVED**  
 mohammad  
 6/25/2019 3:21:29 PM



#28  
 Pyrene  
 Concen: 31.094 ng  
 RT: 19.59 min Scan# 1449  
 Delta R.T. 0.00 min  
 Lab File: BE100147.D  
 Acq: 21 Jun 2019 23:47

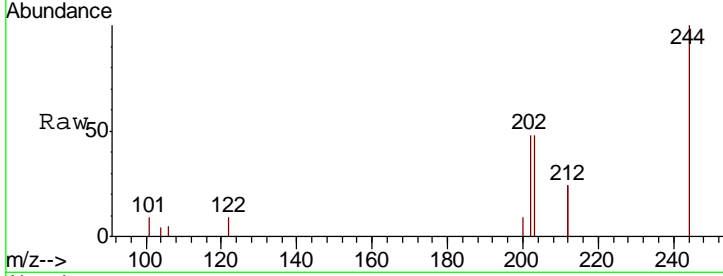
Tgt Ion	Resp	Lower	Upper
202	835641		
202	100		
200	20.1	15.6	23.4
203	21.4	13.9	20.9#





#29  
 Terphenyl-d14  
 Concen: 0.343 ng  
 RT: 19.79 min Scan# 1484  
 Delta R.T. -0.01 min  
 Lab File: BE100147.D  
 Acq: 21 Jun 2019 23:47

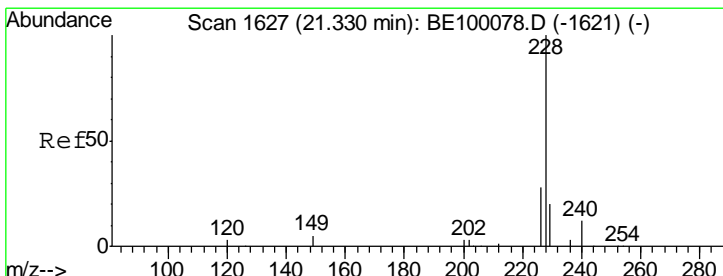
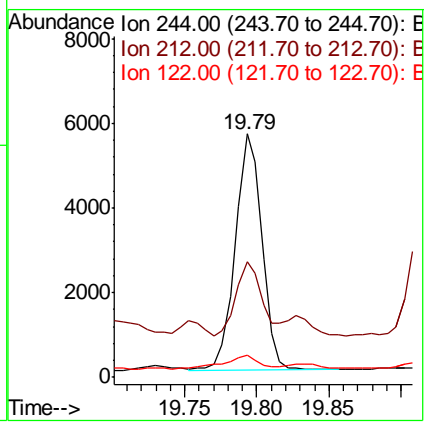
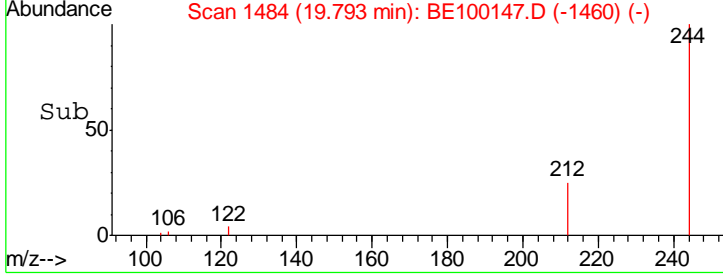
**Instrument :**  
 BNA\_E  
**ClientSampled :**  
 EXT-013-SW164-061319



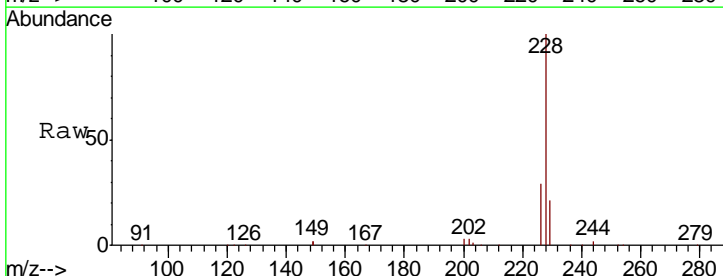
Tgt Ion: 244 Resp: 7168

Ion	Ratio	Lower	Upper
244	100		
212	47.6	29.8	44.8#
122	8.9	6.1	9.1

**Manual Integrations**  
**APPROVED**  
 mohammad  
 6/25/2019 3:21:29 PM

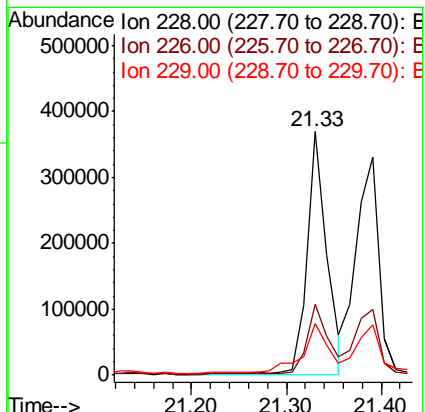
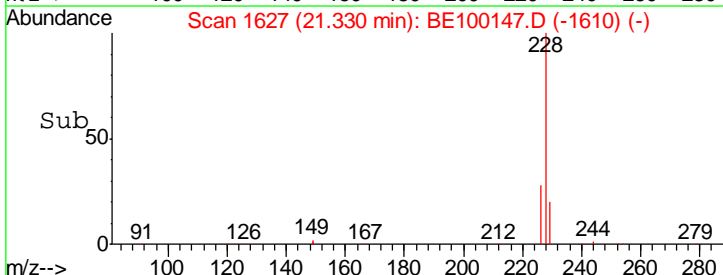


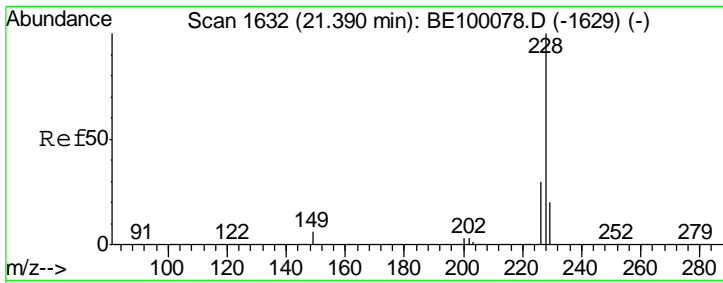
#30  
 Benzo(a)anthracene  
 Concen: 16.989 ng  
 RT: 21.33 min Scan# 1627  
 Delta R.T. 0.00 min  
 Lab File: BE100147.D  
 Acq: 21 Jun 2019 23:47



Tgt Ion: 228 Resp: 528444

Ion	Ratio	Lower	Upper
228	100		
226	29.1	23.0	34.4
229	21.2	16.4	24.6



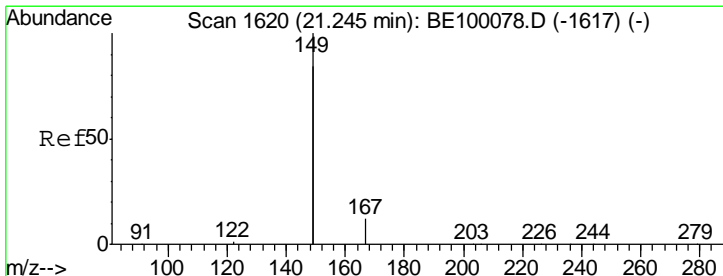
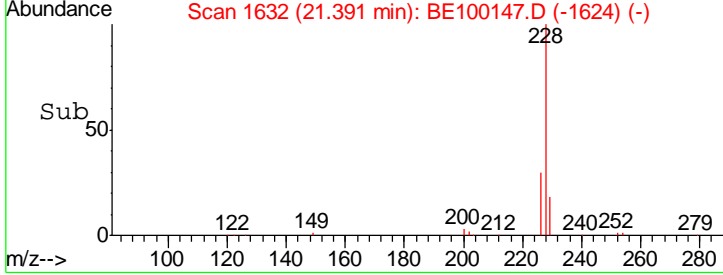
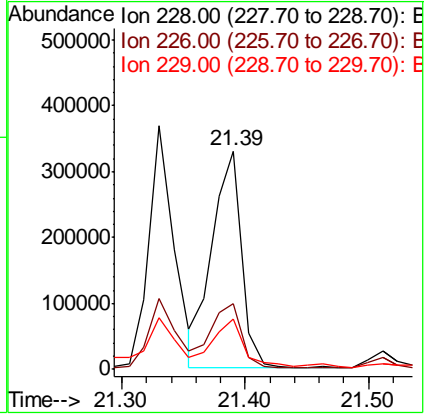
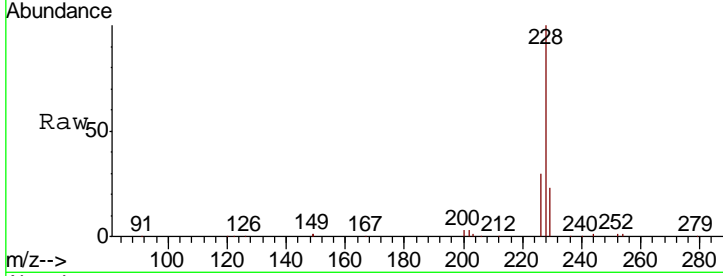


#31  
 Chrysene  
 Concen: 15.187 ng  
 RT: 21.39 min Scan# 1632  
 Delta R.T. 0.00 min  
 Lab File: BE100147.D  
 Acq: 21 Jun 2019 23:47

**Instrument :**  
 BNA\_E  
**ClientSampled :**  
 EXT-013-SW164-061319

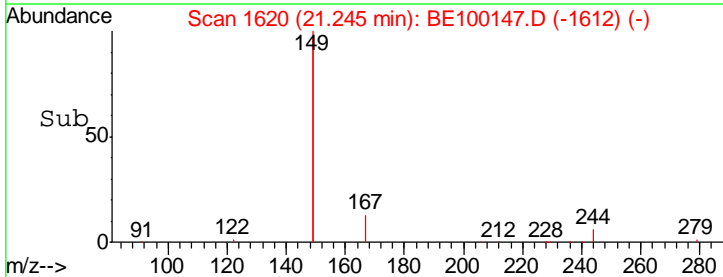
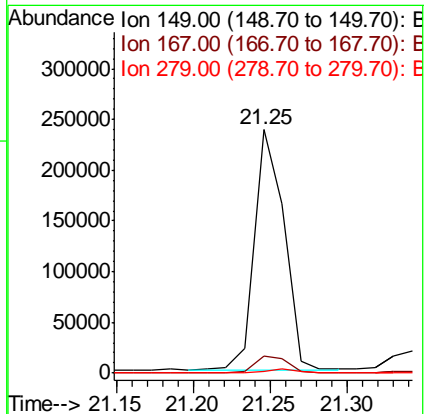
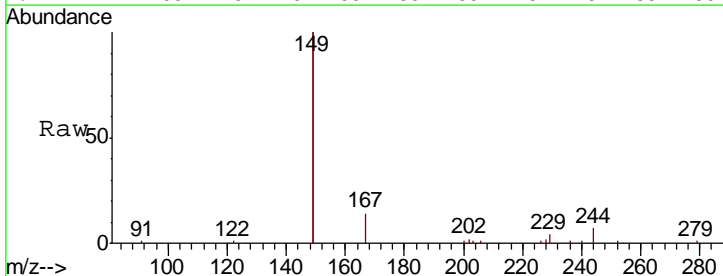
Tgt Ion	Resp	Lower	Upper
228	100		
226	30.1	23.8	35.8
229	22.8	16.3	24.5

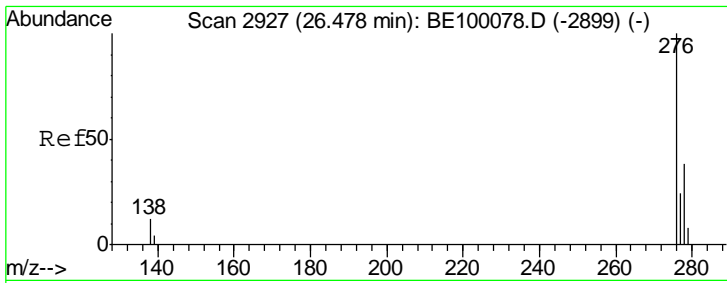
**Manual Integrations**  
**APPROVED**  
 mohammad  
 6/25/2019 3:21:29 PM



#32  
 Bis(2-ethylhexyl)phthalate  
 Concen: 10.690 ng  
 RT: 21.25 min Scan# 1620  
 Delta R.T. 0.00 min  
 Lab File: BE100147.D  
 Acq: 21 Jun 2019 23:47

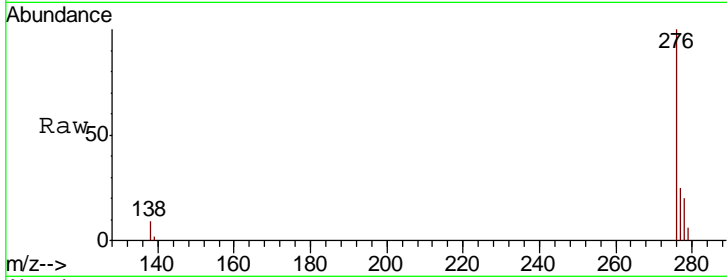
Tgt Ion	Resp	Lower	Upper
149	100		
167	7.4	5.8	8.6
279	1.5	1.1	1.7





#33  
 Indeno(1,2,3-cd)pyrene  
 Concen: 9.079 ng  
 RT: 26.49 min Scan# 2932  
 Delta R.T. 0.02 min  
 Lab File: BE100147.D  
 Acq: 21 Jun 2019 23:47

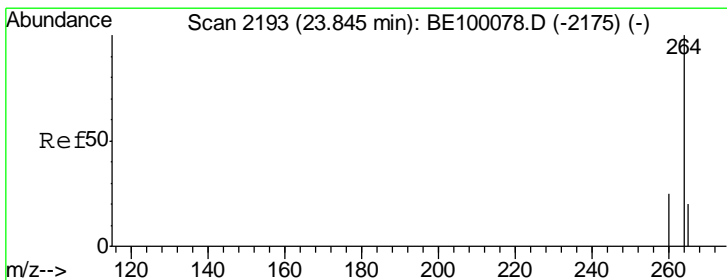
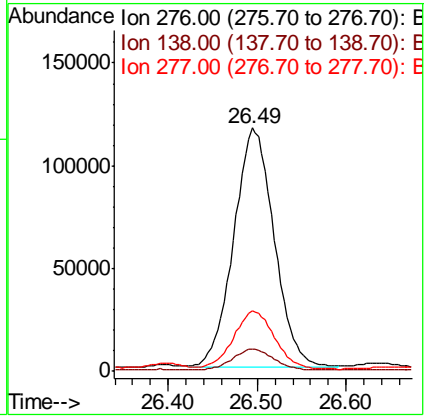
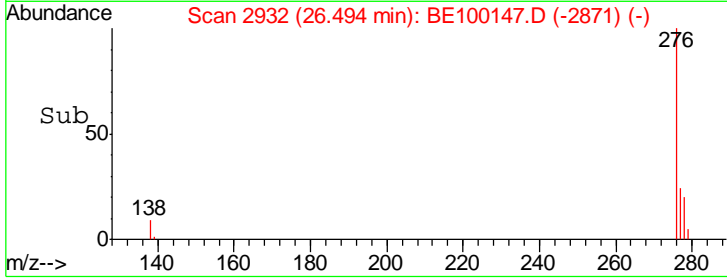
**Instrument :**  
 BNA\_E  
**ClientSampled :**  
 EXT-013-SW164-061319



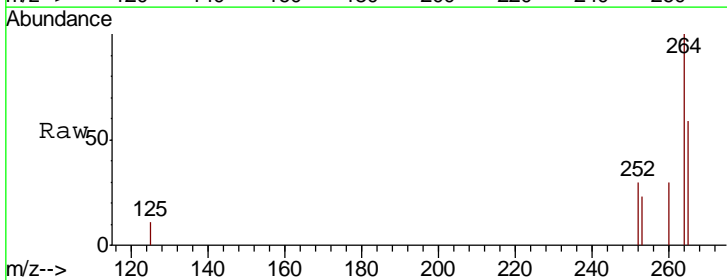
Tgt Ion: 276 Resp: 369233

Ion	Ratio	Lower	Upper
276	100		
138	8.9	4.3	6.5#
277	24.4	19.4	29.0

**Manual Integrations**  
**APPROVED**  
 mohammad  
 6/25/2019 3:21:29 PM

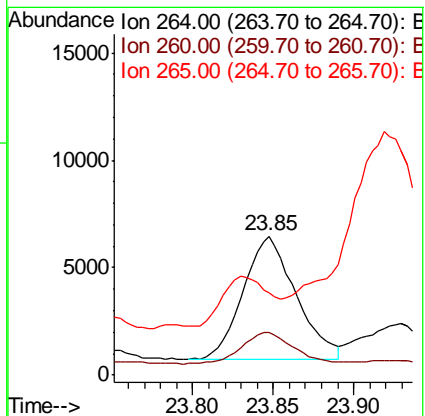
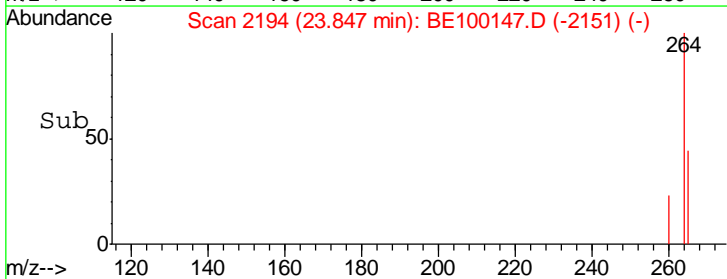


#34  
 Perylene-d12  
 Concen: 0.400 ng  
 RT: 23.85 min Scan# 2194  
 Delta R.T. 0.00 min  
 Lab File: BE100147.D  
 Acq: 21 Jun 2019 23:47

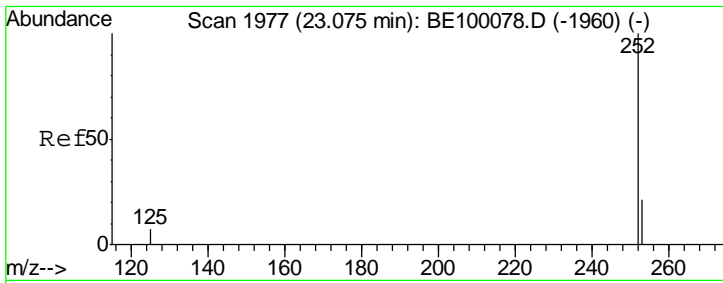


Tgt Ion: 264 Resp: 13256

Ion	Ratio	Lower	Upper
264	100		
260	30.5	20.8	31.2
265	59.5	23.2	34.8#







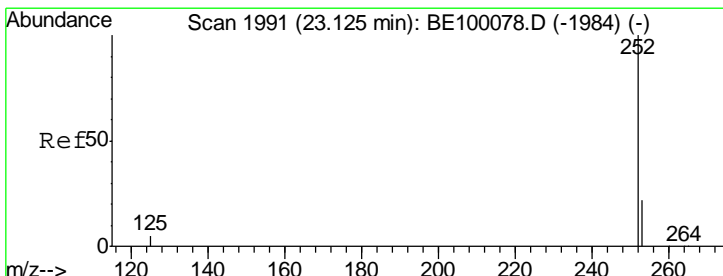
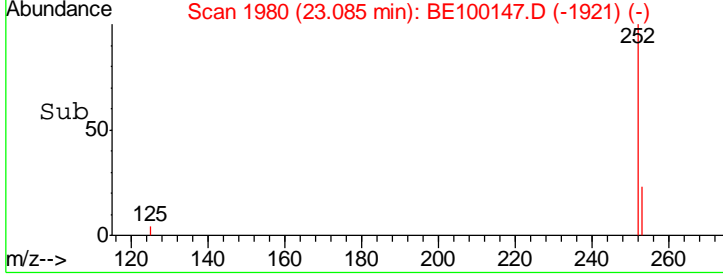
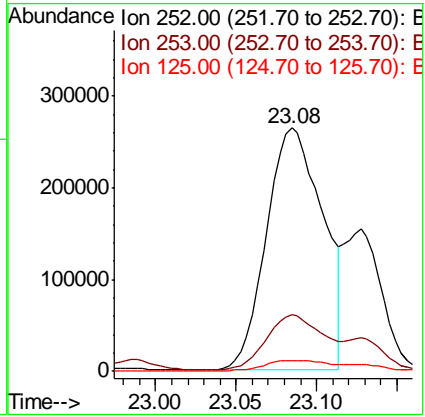
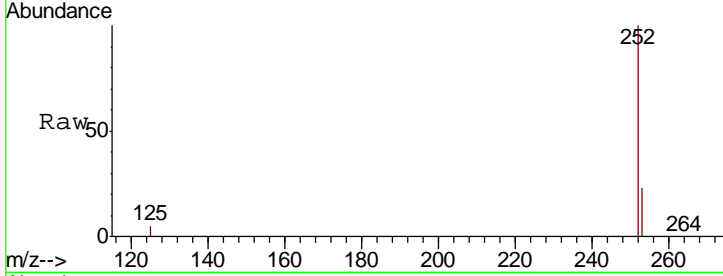
#35  
 Benzo(b)fluoranthene  
 Concen: 16.559 ng  
 RT: 23.08 min Scan# 1980  
 Delta R.T. 0.01 min  
 Lab File: BE100147.D  
 Acq: 21 Jun 2019 23:47

**Instrument :**  
 BNA\_E  
**ClientSampled :**  
 EXT-013-SW164-061319

Tgt Ion	Resp	Lower	Upper
252	644125		
253	23.1	18.4	27.6
125	4.6	6.4	9.6#

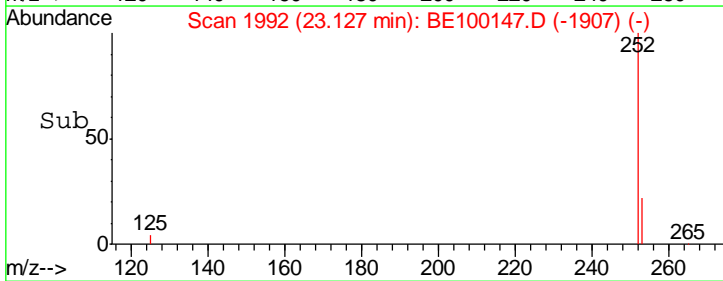
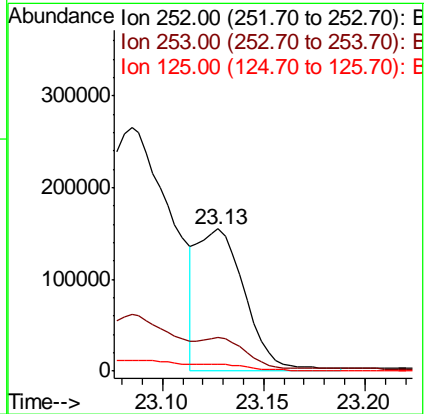
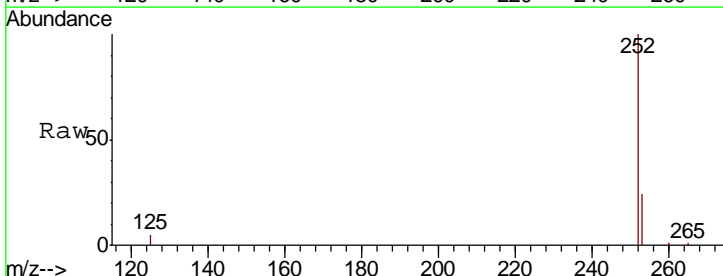
**Manual Integrations**  
**APPROVED**

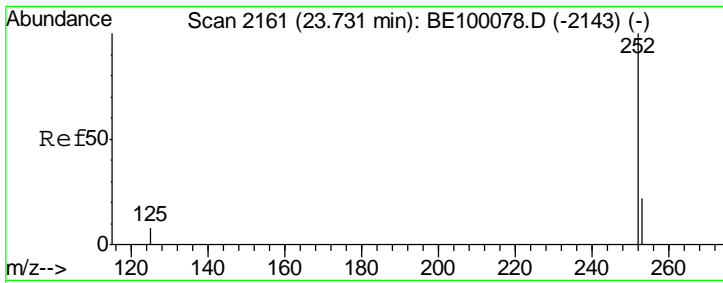
mohammad  
 6/25/2019 3:21:29 PM



#36  
 Benzo(k)fluoranthene  
 Concen: 5.816 ng m  
 RT: 23.13 min Scan# 1992  
 Delta R.T. 0.00 min  
 Lab File: BE100147.D  
 Acq: 21 Jun 2019 23:47

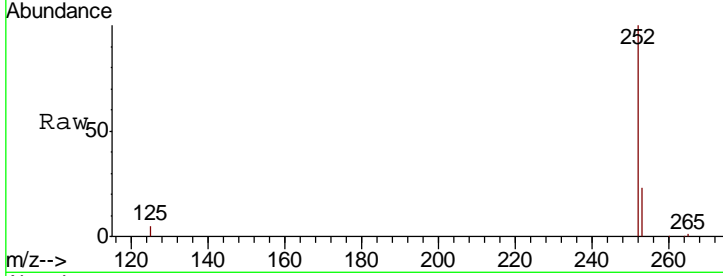
Tgt Ion	Resp	Lower	Upper
252	257377		
253	23.7	18.9	28.3
125	4.9	5.3	7.9#





#37  
 Benzo(a)pyrene  
 Concen: 12.794 ng  
 RT: 23.74 min Scan# 2164  
 Delta R.T. 0.01 min  
 Lab File: BE100147.D  
 Acq: 21 Jun 2019 23:47

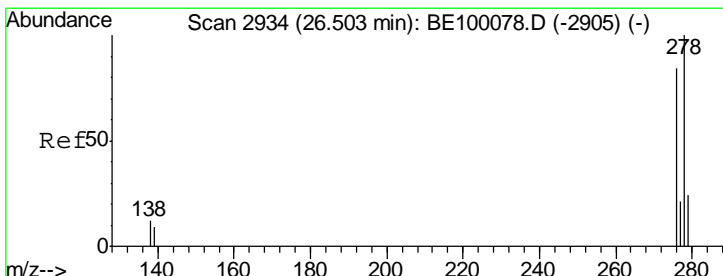
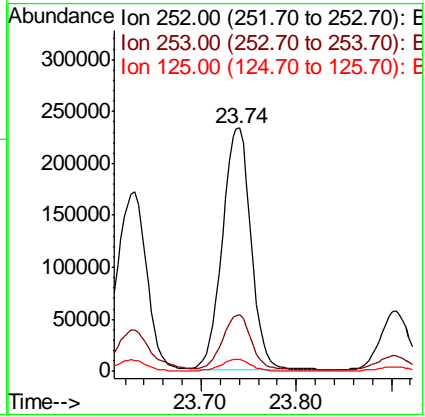
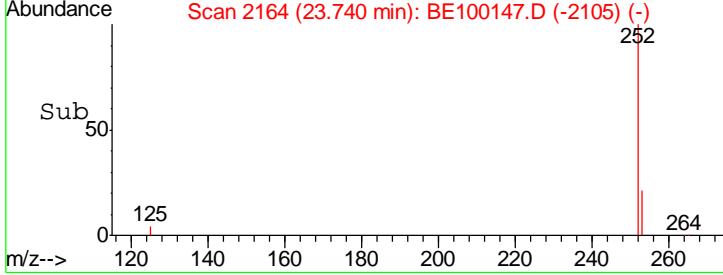
**Instrument :**  
 BNA\_E  
**ClientSampled :**  
 EXT-013-SW164-061319



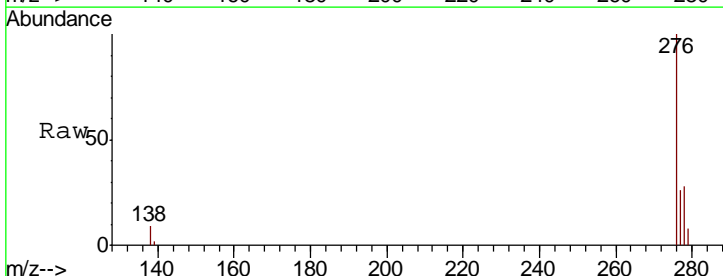
Tgt Ion: 252 Resp: 480410

Ion	Ratio	Lower	Upper
252	100		
253	23.1	19.4	29.2
125	4.8	8.0	12.0#

**Manual Integrations**  
**APPROVED**  
 mohammad  
 6/25/2019 3:21:29 PM

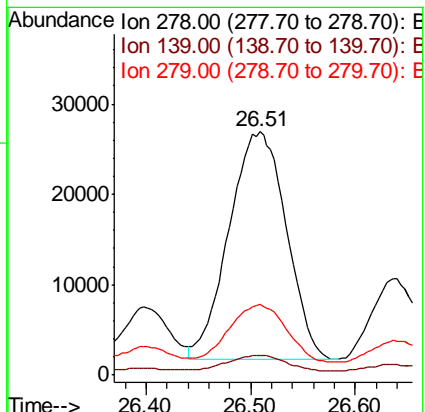
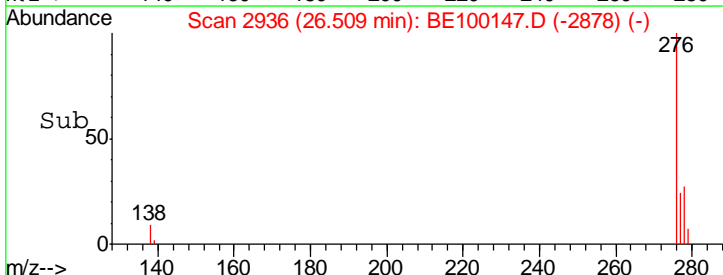


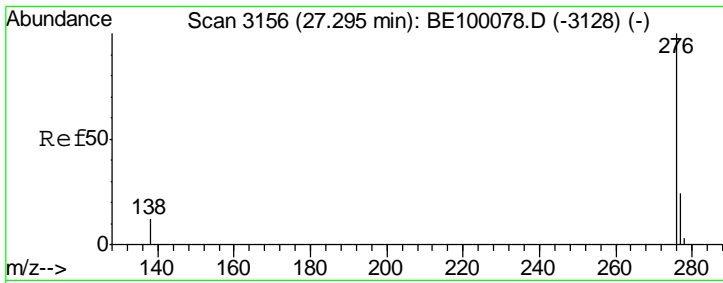
#38  
 Dibenzo(a,h)anthracene  
 Concen: 2.494 ng  
 RT: 26.51 min Scan# 2936  
 Delta R.T. 0.01 min  
 Lab File: BE100147.D  
 Acq: 21 Jun 2019 23:47



Tgt Ion: 278 Resp: 96008

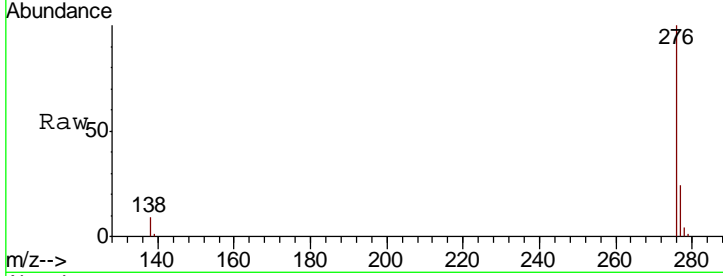
Ion	Ratio	Lower	Upper
278	100		
139	7.8	9.0	13.6#
279	29.1	21.4	32.0





#39  
 Benzo(a,h,i)perylene  
 Concen: 9.506 ng  
 RT: 27.32 min Scan# 3163  
 Delta R.T. 0.02 min  
 Lab File: BE100147.D  
 Acq: 21 Jun 2019 23:47

**Instrument :**  
 BNA\_E  
**ClientSampled :**  
 EXT-013-SW164-061319



Tot Ion: 276 Resp: 380210

Ion	Ratio	Lower	Upper
276	100		
277	24.4	20.3	30.5
138	9.3	11.3	16.9

**Manual Integrations**  
**APPROVED**  
 mohammad  
 6/25/2019 3:21:29 PM

