

Data Path : Z:\SVOASRV\HPCHEM1\BNA E\DATA\BE070119\  
 Data File : BE100289.D  
 Acq On : 2 Jul 2019 6:33  
 Operator : JU/SJ  
 Sample : K3445-06DL 5X  
 Misc :  
 ALS Vial : 30 Sample Multiplier: 1

**Instrument :**  
 BNA\_E  
**ClientSampleId :**  
 PST-007-SW050-061819DL

**Manual Integrations**  
**APPROVED**  
 mohammad  
 7/3/2019 10:53:11 PM

Quant Time: Jul 02 08:18:50 2019  
 Quant Method : Z:\SVOASRV\HPCHEM1\BNA E\METHODS\8270-SIM-BE062819.M  
 Quant Title : ASP BNA STANDARDS FOR 5 POINT CALIBRATION  
 QLast Update : Fri Jun 28 14:06:53 2019  
 Response via : Initial Calibration

Internal Standards	R.T.	QIon	Response	Conc	Units	Dev(Min)
1) 1,4-Dichlorobenzene-d4	7.64	152	824	0.40	ng	0.00
7) Naphthalene-d8	10.45	136	2974	0.40	ng	0.00
13) Acenaphthene-d10	14.33	164	2247	0.40	ng	0.02
19) Phenanthrene-d10	17.07	188	6395	0.40	ng	0.01
27) Chrysene-d12	21.24	240	7968	0.40	ng	0.00
34) Perylene-d12	23.68	264	9194	0.40	ng	0.02

System Monitoring Compounds	R.T.	QIon	Response	Conc	Units	Dev(Min)
4) 2-Fluorophenol	5.22	112	141	0.07	ng	0.00
5) Phenol-d6	6.85	99	155	0.06	ng	0.00
8) Nitrobenzene-d5	8.83	82	172	0.06	ng	0.01
11) 2-Methylnaphthalene-d10	12.05	152	285	0.05	ng	0.00
14) 2,4,6-Tribromophenol	15.82	330	96	0.06	ng	0.00
15) 2-Fluorobiphenyl	12.94	172	552	0.06	ng	0.00
25) Fluoranthene-d10	19.10	212	4312	0.05	ng	0.00
29) Terphenyl-d14	19.70	244	1585	0.10	ng	0.00

Target Compounds	R.T.	QIon	Response	Conc	Units	Qvalue
9) Naphthalene	10.48	128	1880	0.057	ng	# 90
12) 2-Methylnaphthalene	12.12	142	162	0.028	ng	# 81
16) Acenaphthylene	14.04	152	1744	0.162	ng	98
17) Acenaphthene	14.38	154	460	0.075	ng	93
18) Fluorene	15.37	166	986	0.109	ng	# 97
23) Phenanthrene	17.11	178	33331	2.150	ng	100
24) Anthracene	17.20	178	4620	0.331	ng	# 92
26) Fluoranthene	19.13	202	76415	3.095	ng	100
28) Pyrene	19.49	202	69983	3.317	ng	# 96
30) Benzo(a)anthracene	21.23	228	43076	1.644	ng	97
31) Chrysene	21.28	228	38107	1.449	ng	96
33) Indeno(1,2,3-cd)pyrene	26.24	276	21811	0.627	ng	# 95
35) Benzo(b)fluoranthene	22.94	252	48255	1.936	ng	# 98
36) Benzo(k)fluoranthene	22.98	252	15871m	0.570	ng	
37) Benzo(a)pyrene	23.57	252	35230m	1.410	ng	
38) Dibenzo(a,h)anthracene	26.26	278	5086	0.195	ng	# 69
39) Benzo(a,h,i)perylene	27.04	276	20652	0.770	ng	96

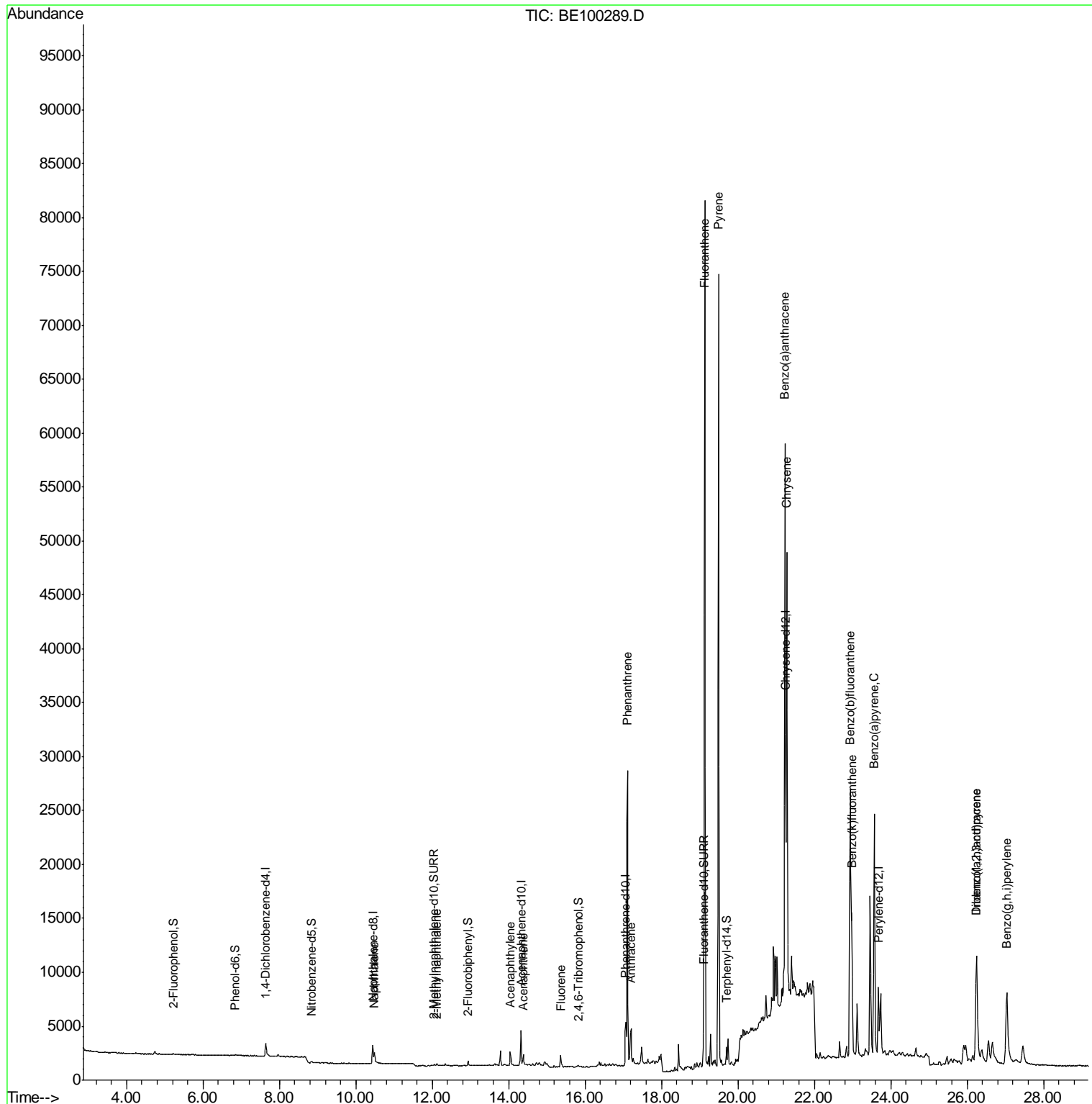
(#) = qualifier out of range (m) = manual integration (+) = signals summed

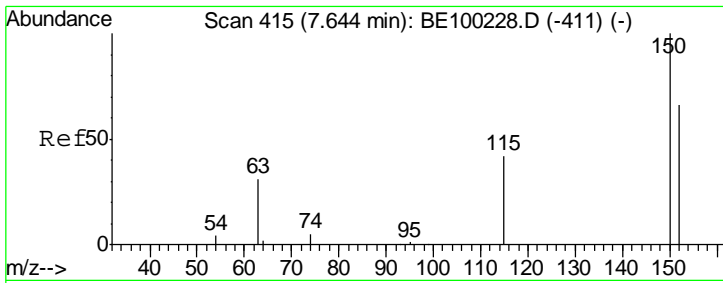
Data Path : Z:\SVOASRV\HPCHEM1\BNA E\DATA\BE070119\  
 Data File : BE100289.D  
 Acq On : 2 Jul 2019 6:33  
 Operator : JU/SJ  
 Sample : K3445-06DL 5X  
 Misc :  
 ALS Vial : 30 Sample Multiplier: 1

**Instrument :**  
 BNA\_E  
**ClientSampleId :**  
 PST-007-SW050-061819DL

**Manual Integrations**  
**APPROVED**  
 mohammad  
 7/3/2019 10:53:11 PM

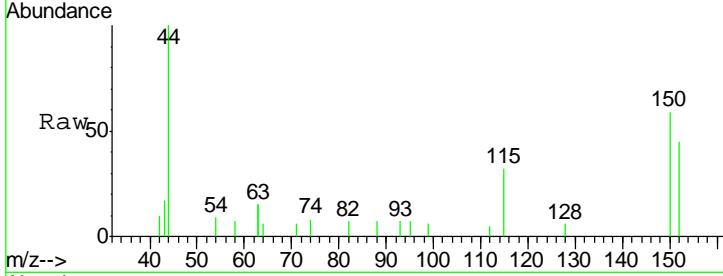
Quant Time: Jul 02 08:18:50 2019  
 Quant Method : Z:\SVOASRV\HPCHEM1\BNA E\METHODS\8270-SIM-BE062819.M  
 Quant Title : ASP BNA STANDARDS FOR 5 POINT CALIBRATION  
 QLast Update : Fri Jun 28 14:06:53 2019  
 Response via : Initial Calibration





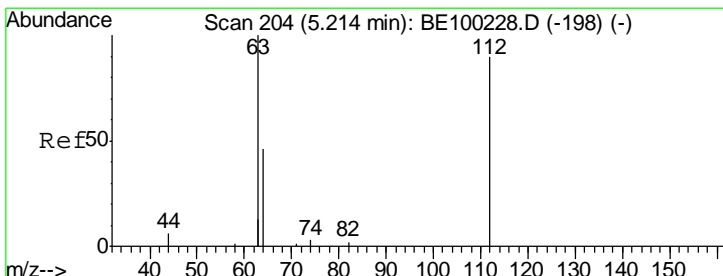
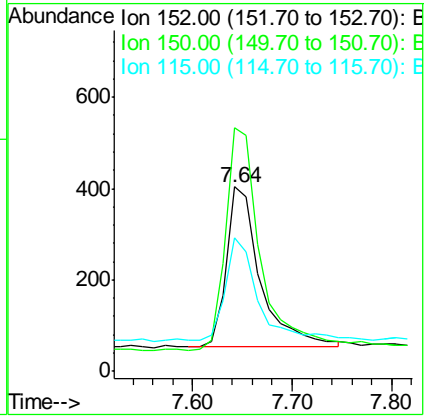
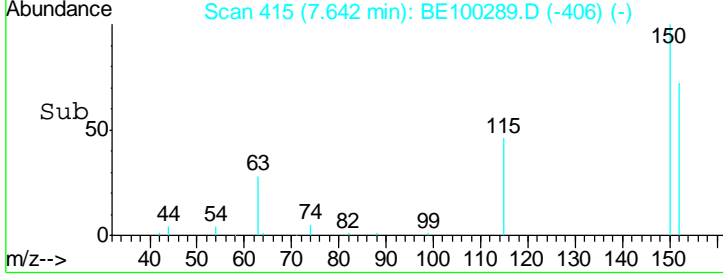
#1  
 1,4-Dichlorobenzene-d4  
 Concen: 0.400 ng  
 RT: 7.64 min Scan# 415  
 Delta R.T. -0.00 min  
 Lab File: BE100289.D  
 Acq: 2 Jul 2019 6:33

**Instrument :**  
 BNA\_E  
**ClientSampled :**  
 PST-007-SW050-061819DL

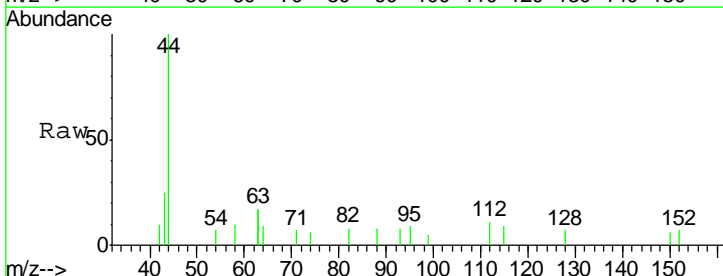


Tgt Ion	Resp	Lower	Upper
152	100		
150	131.9	114.5	171.7
115	72.0	57.1	85.7

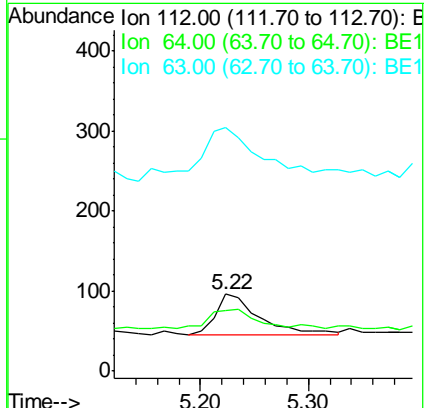
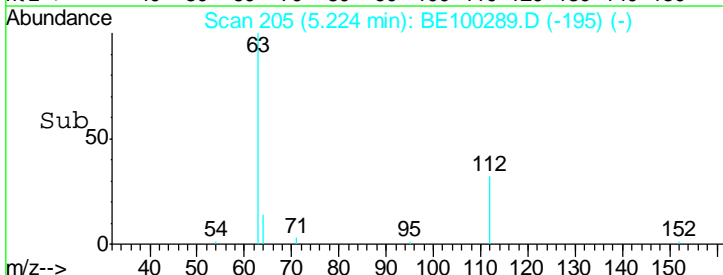
**Manual Integrations**  
**APPROVED**  
 mohammad  
 7/3/2019 10:53:11 PM

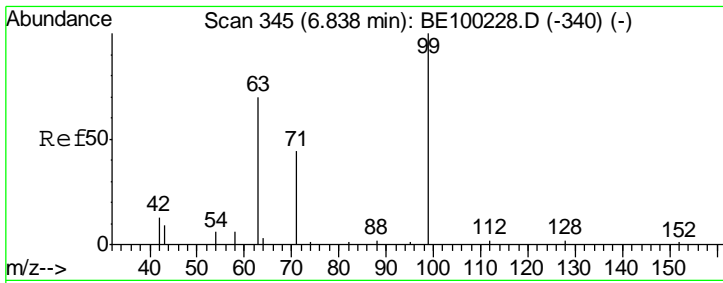


#4  
 2-Fluorophenol  
 Concen: 0.067 ng  
 RT: 5.22 min Scan# 205  
 Delta R.T. 0.01 min  
 Lab File: BE100289.D  
 Acq: 2 Jul 2019 6:33



Tgt Ion	Resp	Lower	Upper
112	100		
64	59.6	39.4	59.0#
63	199.3	104.5	156.7#





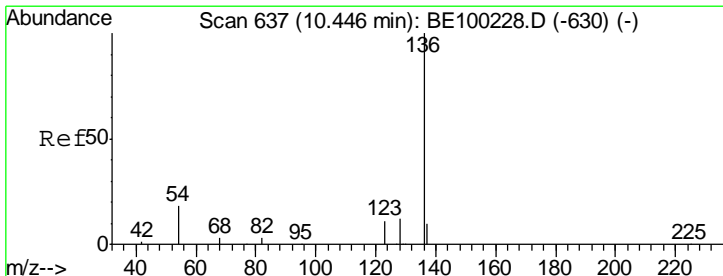
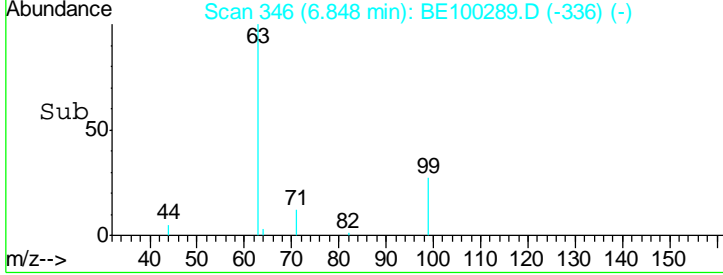
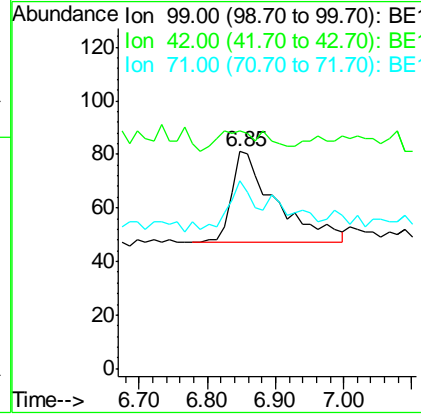
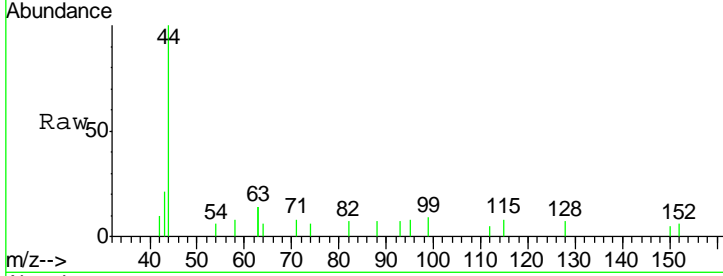
#5  
 Phenol-d6  
 Concen: 0.056 ng  
 RT: 6.85 min Scan# 346  
 Delta R.T. 0.01 min  
 Lab File: BE100289.D  
 Acq: 2 Jul 2019 6:33

**Instrument :**  
 BNA\_E  
**ClientSampled :**  
 PST-007-SW050-061819DL

Tgt Ion	Resp	Lower	Upper
99	155		
99	100		
42	0.0	11.2	16.8#
71	31.6	37.2	55.8#

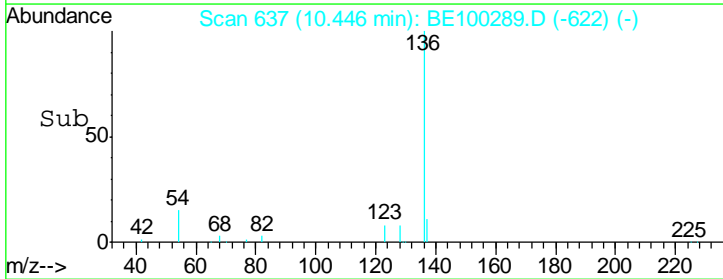
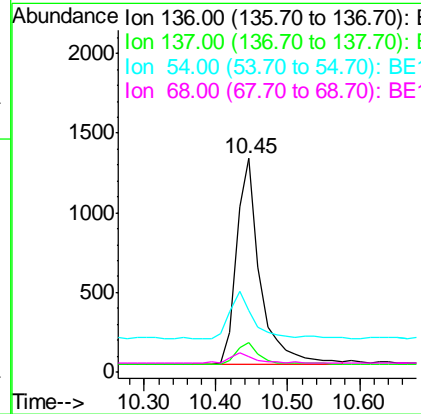
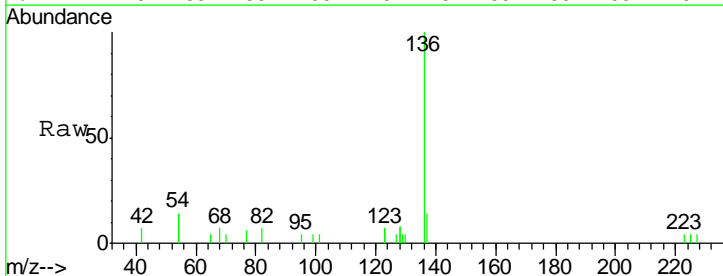
**Manual Integrations**  
**APPROVED**

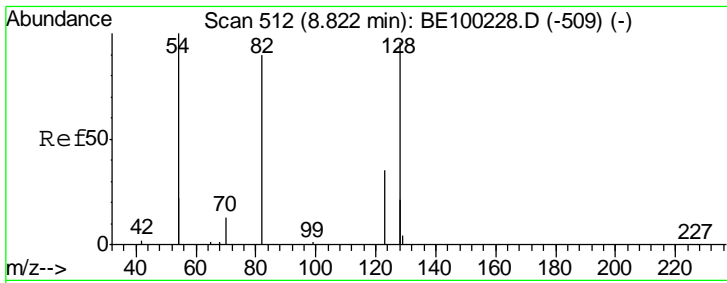
mohammad  
 7/3/2019 10:53:11 PM



#7  
 Naphthalene-d8  
 Concen: 0.400 ng  
 RT: 10.45 min Scan# 637  
 Delta R.T. 0.00 min  
 Lab File: BE100289.D  
 Acq: 2 Jul 2019 6:33

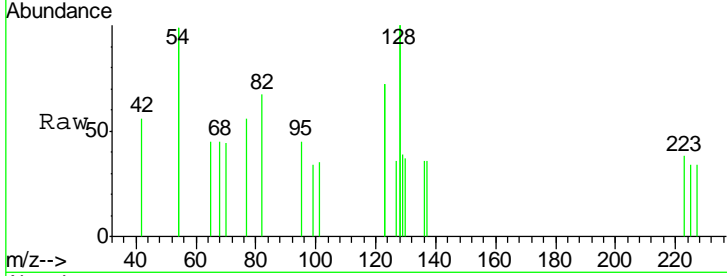
Tgt Ion	Resp	Lower	Upper
136	2974		
136	100		
137	13.9	11.8	17.8
54	28.9	27.7	41.5
68	6.9	6.8	10.2





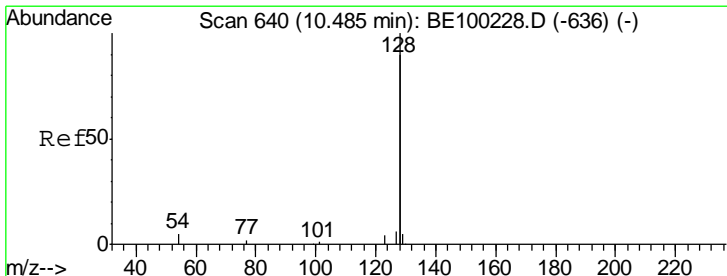
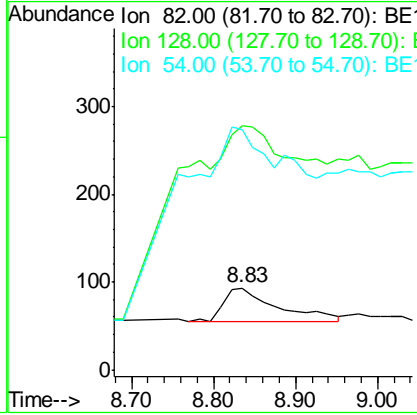
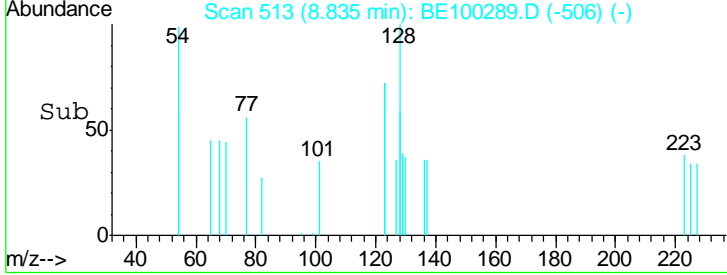
#8  
 Nitrobenzene-d5  
 Concen: 0.058 ng  
 RT: 8.83 min Scan# 513  
 Delta R.T. 0.01 min  
 Lab File: BE100289.D  
 Acq: 2 Jul 2019 6:33

**Instrument :**  
 BNA\_E  
**ClientSampled :**  
 PST-007-SW050-061819DL

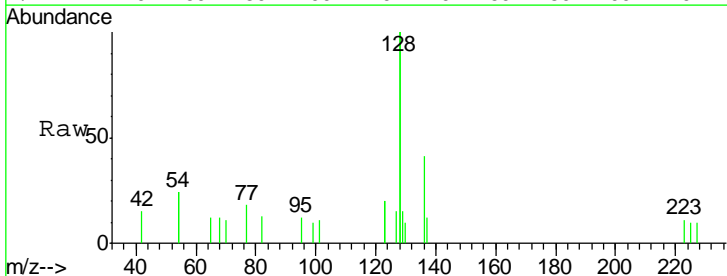


Tgt Ion	Resp	Lower	Upper
82	172		
82	100		
128	298.9	140.9	211.3#
54	294.6	146.2	219.2#

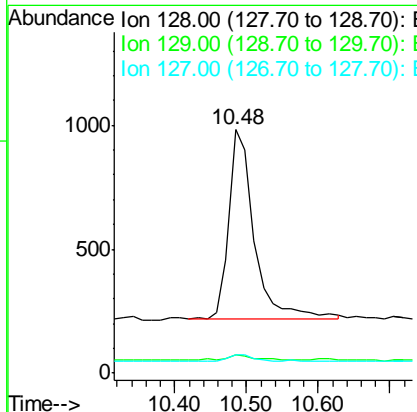
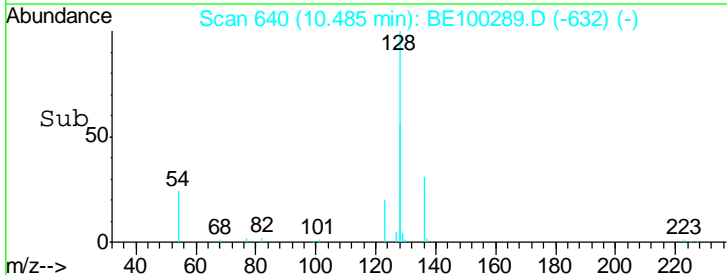
**Manual Integrations**  
**APPROVED**  
 mohammad  
 7/3/2019 10:53:11 PM

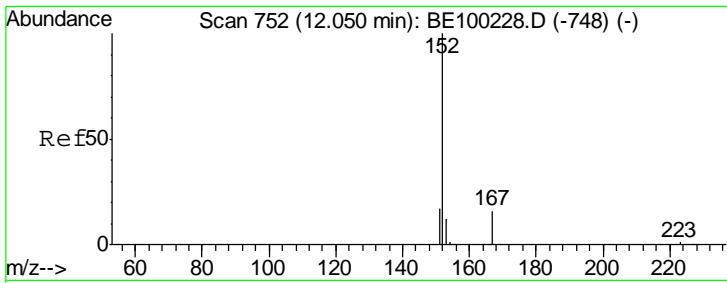


#9  
 Naphthalene  
 Concen: 0.057 ng  
 RT: 10.48 min Scan# 640  
 Delta R.T. 0.00 min  
 Lab File: BE100289.D  
 Acq: 2 Jul 2019 6:33



Tgt Ion	Resp	Lower	Upper
128	1880		
128	100		
129	7.3	3.0	4.6#
127	7.3	3.5	5.3#



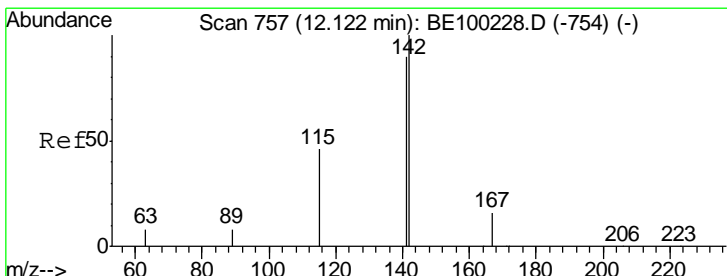
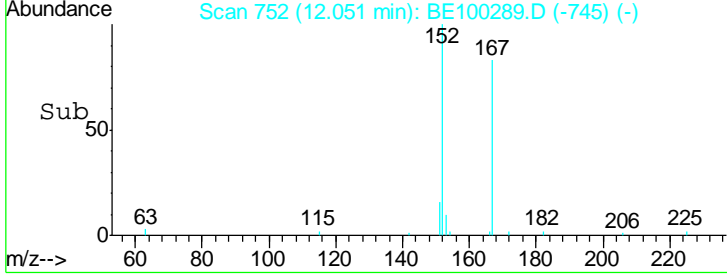
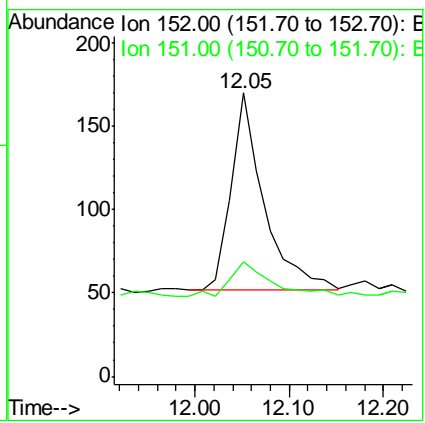
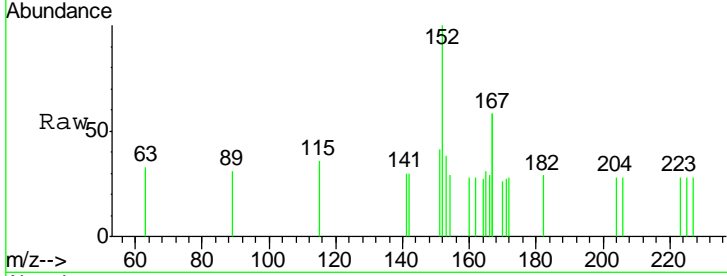


#11  
 2-Methylnaphthalene-d10  
 Concen: 0.051 ng  
 RT: 12.05 min Scan# 752  
 Delta R.T. 0.00 min  
 Lab File: BE100289.D  
 Acq: 2 Jul 2019 6:33

**Instrument :**  
 BNA\_E  
**ClientSampleId :**  
 PST-007-SW050-061819DL

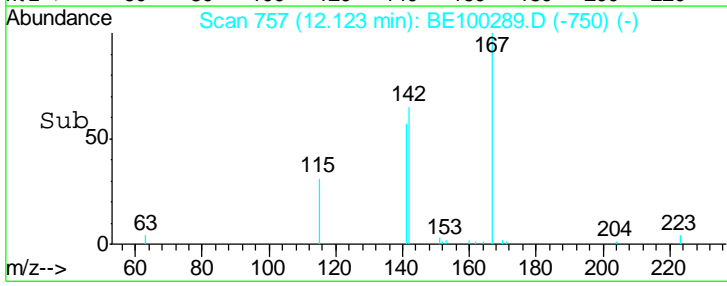
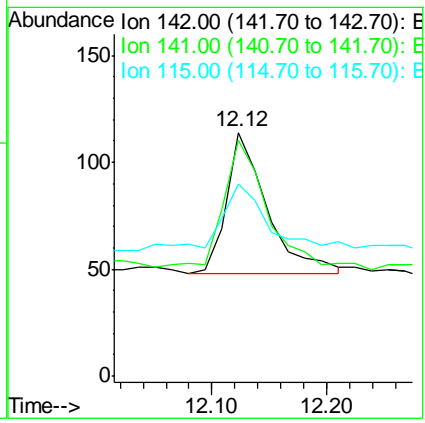
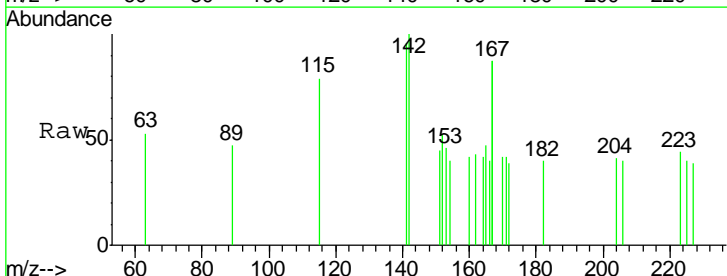
Tgt Ion	Resp	Lower	Upper
152	100		
151	23.5	15.1	22.7#

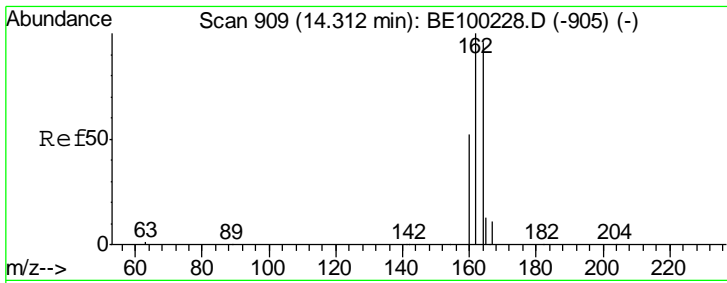
**Manual Integrations**  
**APPROVED**  
 mohammad  
 7/3/2019 10:53:11 PM



#12  
 2-Methylnaphthalene  
 Concen: 0.028 ng  
 RT: 12.12 min Scan# 757  
 Delta R.T. 0.00 min  
 Lab File: BE100289.D  
 Acq: 2 Jul 2019 6:33

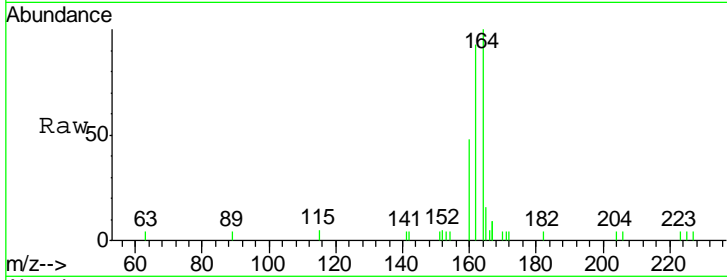
Tgt Ion	Resp	Lower	Upper
142	100		
141	96.5	72.4	108.6
115	78.9	40.4	60.6#





#13  
 Acenaphthene-d10  
 Concen: 0.400 ng  
 RT: 14.33 min Scan# 910  
 Delta R.T. 0.02 min  
 Lab File: BE100289.D  
 Acq: 2 Jul 2019 6:33

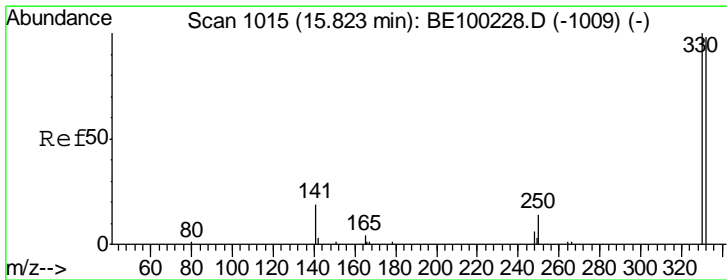
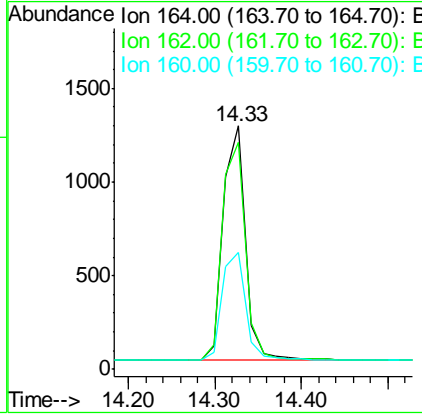
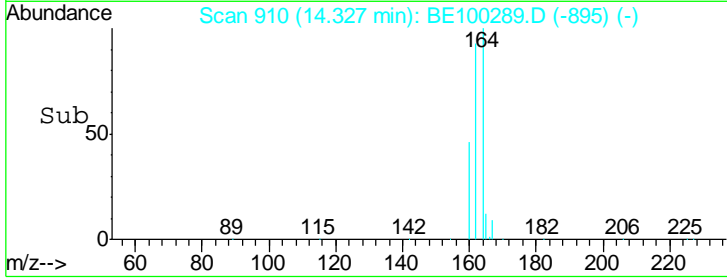
**Instrument :**  
 BNA\_E  
**ClientSampled :**  
 PST-007-SW050-061819DL



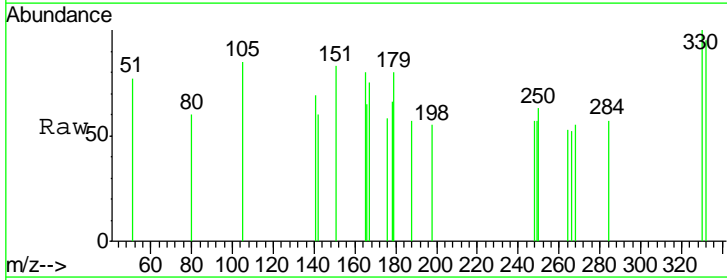
Tgt Ion: 164 Resp: 2247

Ion	Ratio	Lower	Upper
164	100		
162	93.2	83.4	125.0
160	48.1	45.0	67.6

**Manual Integrations**  
**APPROVED**  
 mohammad  
 7/3/2019 10:53:11 PM

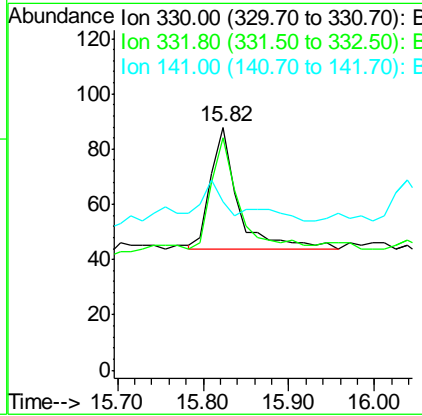
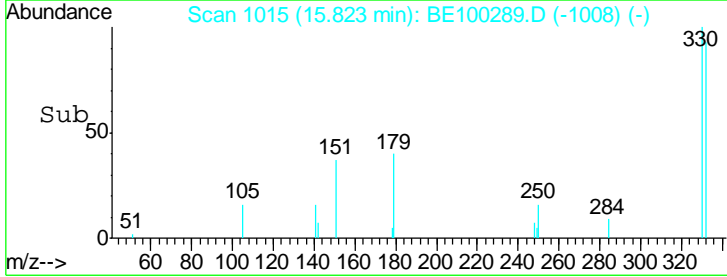


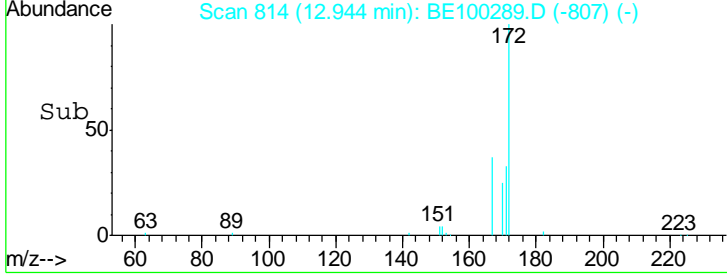
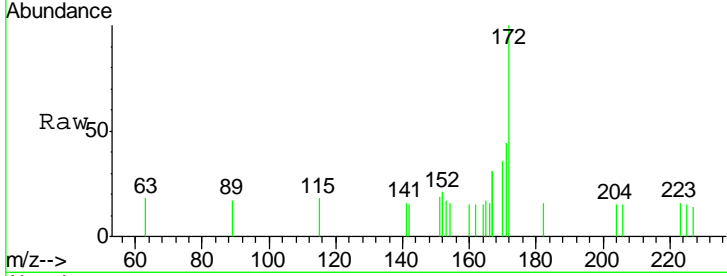
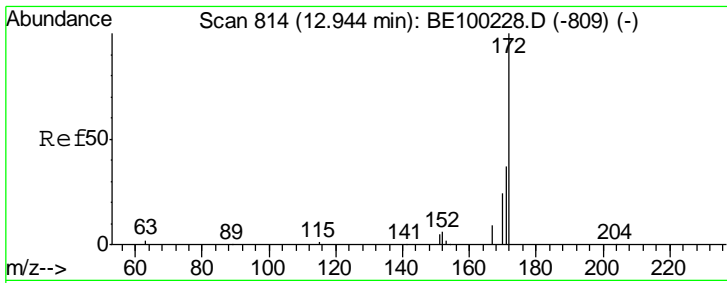
#14  
 2,4,6-Tribromophenol  
 Concen: 0.061 ng  
 RT: 15.82 min Scan# 1015  
 Delta R.T. 0.00 min  
 Lab File: BE100289.D  
 Acq: 2 Jul 2019 6:33



Tgt Ion: 330 Resp: 96

Ion	Ratio	Lower	Upper
330	100		
332	91.7	77.0	115.4
141	15.6	22.0	33.0#



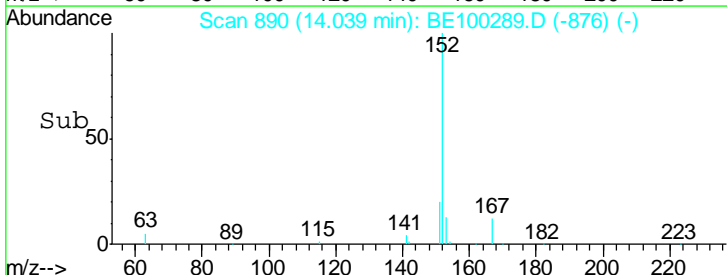
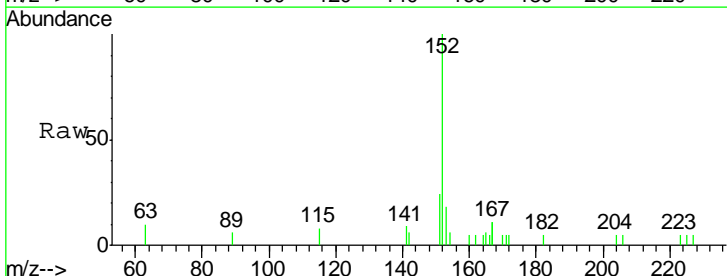
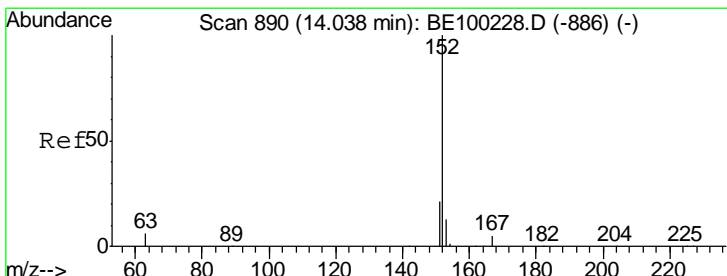
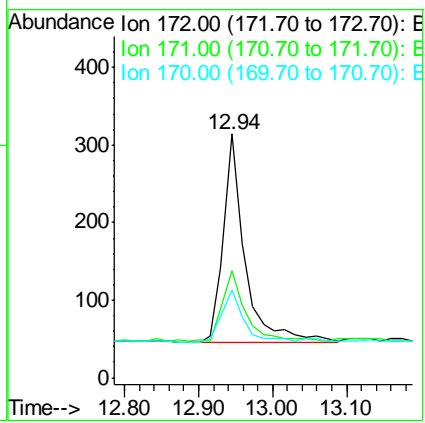


#15  
 2-Fluorobiphenyl  
 Concen: 0.063 ng  
 RT: 12.94 min Scan# 814  
 Delta R.T. 0.00 min  
 Lab File: BE100289.D  
 Acq: 2 Jul 2019 6:33

Tgt Ion	Resp	Lower	Upper
172	100		
171	43.9	31.9	47.9
170	36.0	22.2	33.2

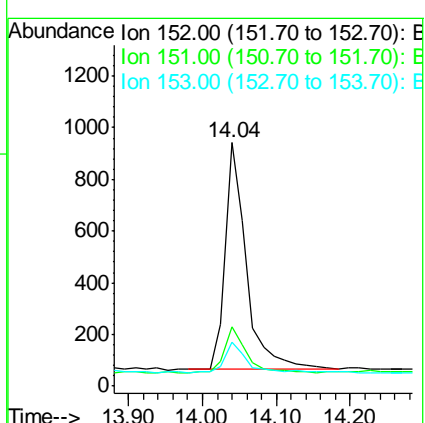
**Instrument :**  
 BNA\_E  
**ClientSampleId :**  
 PST-007-SW050-061819DL

**Manual Integrations**  
**APPROVED**  
 mohammad  
 7/3/2019 10:53:11 PM

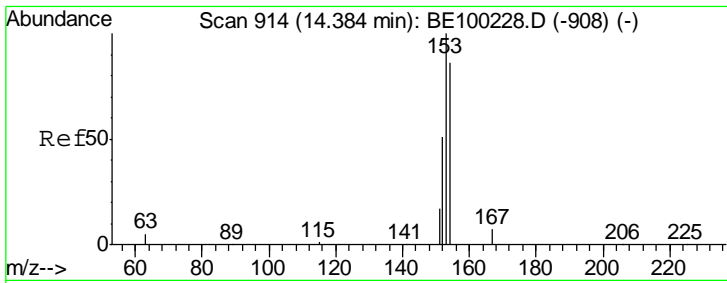


#16  
 Acenaphthylene  
 Concen: 0.162 ng  
 RT: 14.04 min Scan# 890  
 Delta R.T. 0.00 min  
 Lab File: BE100289.D  
 Acq: 2 Jul 2019 6:33

Tgt Ion	Resp	Lower	Upper
152	100		
151	20.6	16.6	25.0
153	14.9	10.5	15.7

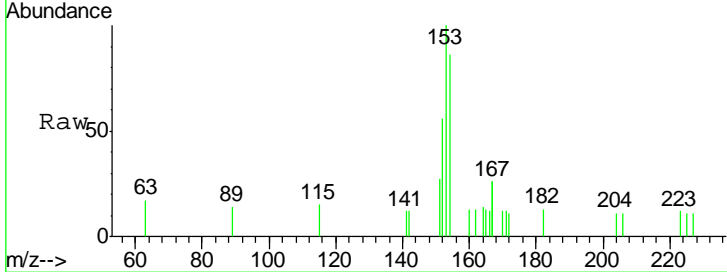






#17  
 Acenaphthene  
 Concen: 0.075 ng  
 RT: 14.38 min Scan# 914  
 Delta R.T. 0.00 min  
 Lab File: BE100289.D  
 Acq: 2 Jul 2019 6:33

Instrument :  
 BNA\_E  
 ClientSampleId :  
 PST-007-SW050-061819DL

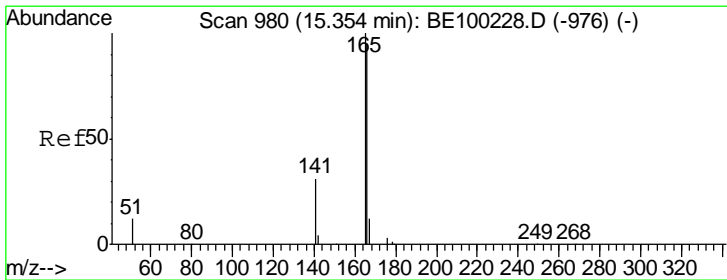
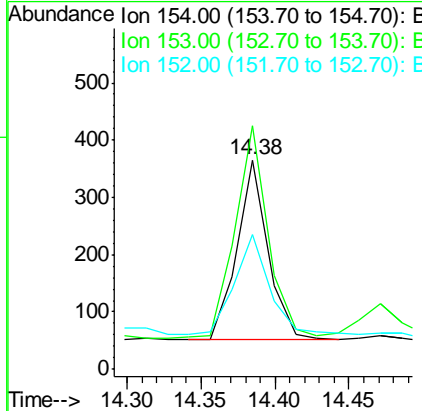
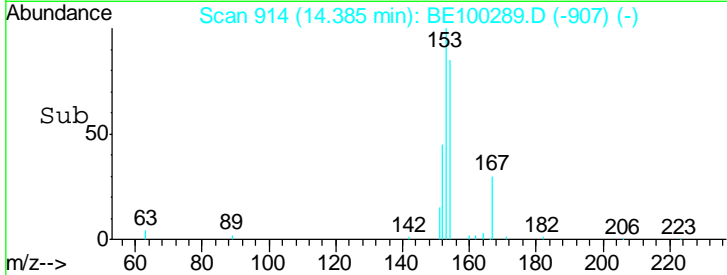


Tgt Ion: 154 Resp: 460

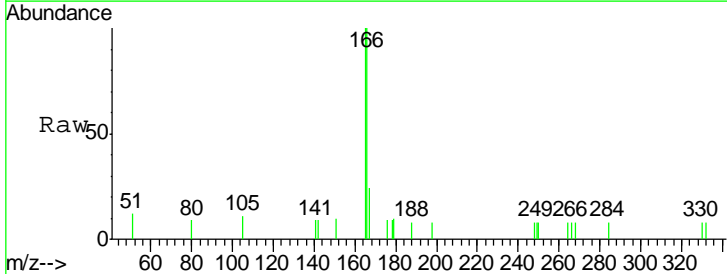
Ion	Ratio	Lower	Upper
154	100		
153	125.7	93.4	140.2
152	64.6	49.4	74.2

Manual Integrations  
 APPROVED

mohammad  
 7/3/2019 10:53:11 PM

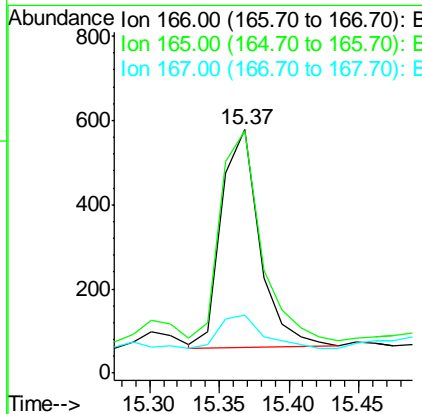
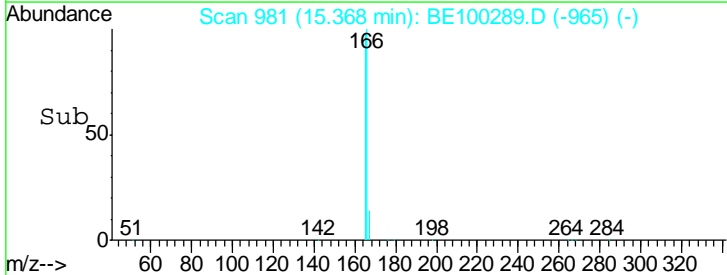


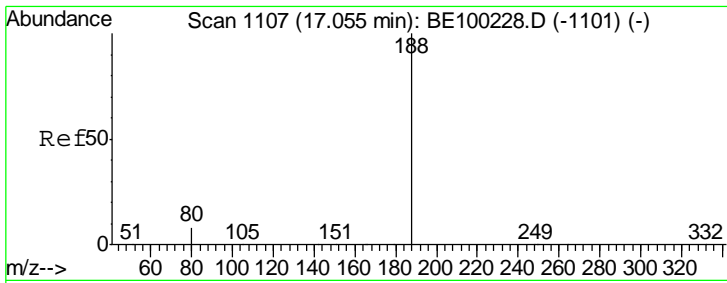
#18  
 Fluorene  
 Concen: 0.109 ng  
 RT: 15.37 min Scan# 981  
 Delta R.T. 0.01 min  
 Lab File: BE100289.D  
 Acq: 2 Jul 2019 6:33



Tgt Ion: 166 Resp: 986

Ion	Ratio	Lower	Upper
166	100		
165	103.2	81.1	121.7
167	17.0	10.7	16.1#





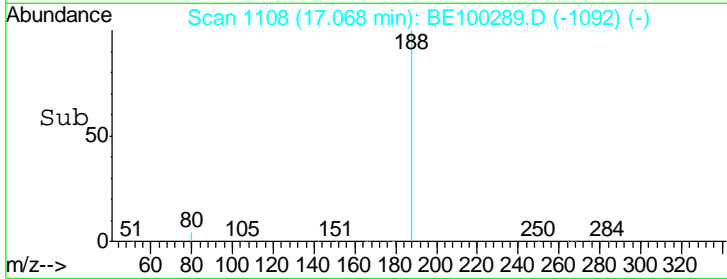
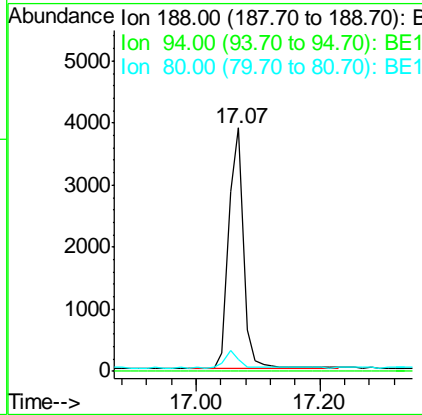
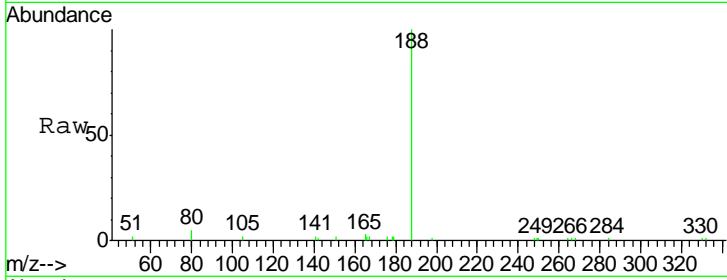
#19  
 Phenanthrene-d10  
 Concen: 0.400 ng  
 RT: 17.07 min Scan# 1108  
 Delta R.T. 0.01 min  
 Lab File: BE100289.D  
 Acq: 2 Jul 2019 6:33

**Instrument :**  
 BNA\_E  
**ClientSampled :**  
 PST-007-SW050-061819DL

Tgt Ion	Ratio	Lower	Upper
188	100		
94	0.0	0.0	0.0
80	4.9	7.6	11.4#

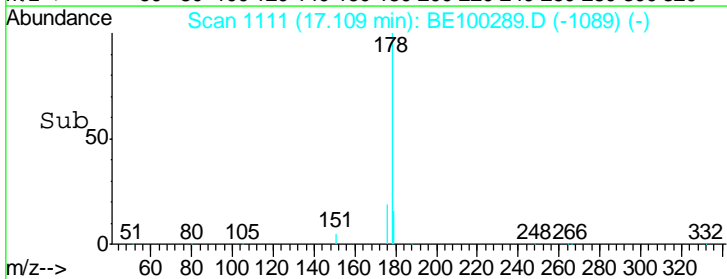
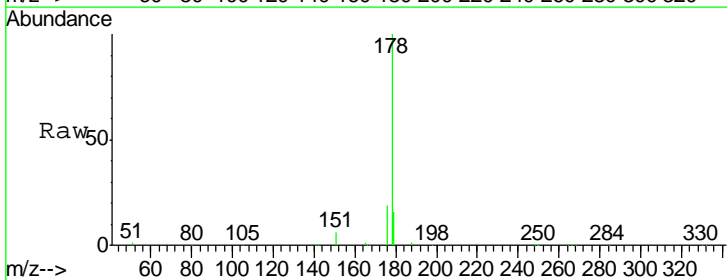
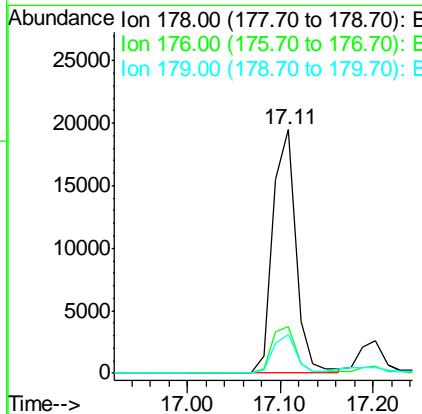
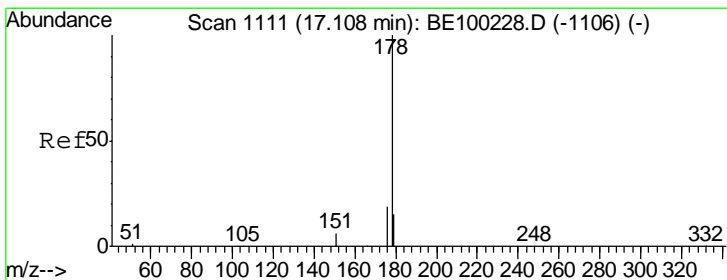
**Manual Integrations**  
**APPROVED**

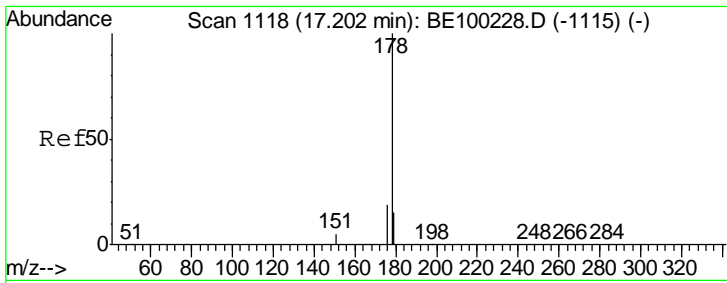
mohammad  
 7/3/2019 10:53:11 PM



#23  
 Phenanthrene  
 Concen: 2.150 ng  
 RT: 17.11 min Scan# 1111  
 Delta R.T. 0.00 min  
 Lab File: BE100289.D  
 Acq: 2 Jul 2019 6:33

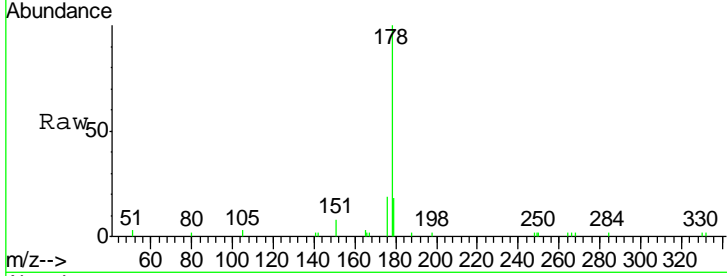
Tgt Ion	Ratio	Lower	Upper
178	100		
176	19.8	15.9	23.9
179	15.5	12.2	18.2





#24  
 Anthracene  
 Concen: 0.331 ng  
 RT: 17.20 min Scan# 1118  
 Delta R.T. 0.00 min  
 Lab File: BE100289.D  
 Acq: 2 Jul 2019 6:33

Instrument :  
 BNA\_E  
 ClientSampleID :  
 PST-007-SW050-061819DL

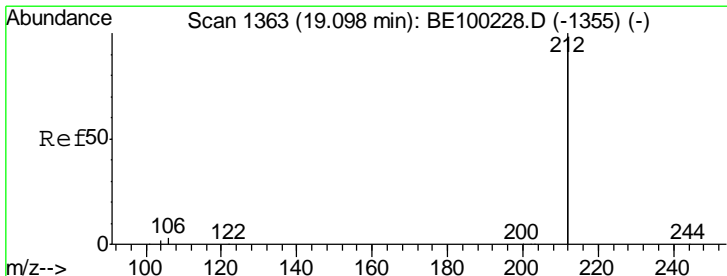
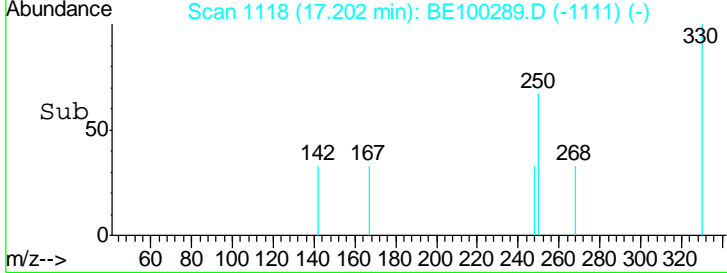
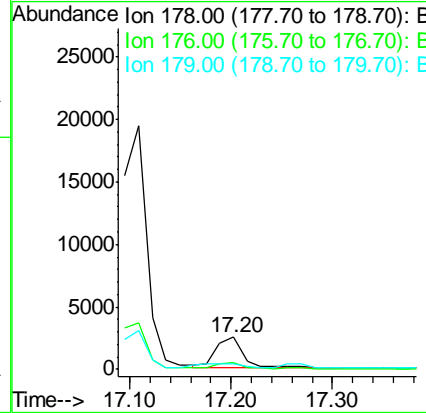


Tgt Ion: 178 Resp: 4620

Ion	Ratio	Lower	Upper
178	100		
176	18.2	15.3	22.9
179	22.1	12.2	18.2#

Manual Integrations  
 APPROVED

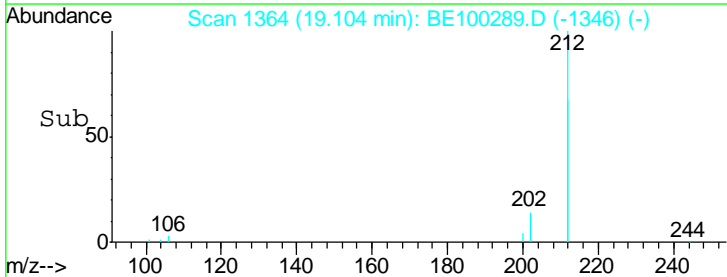
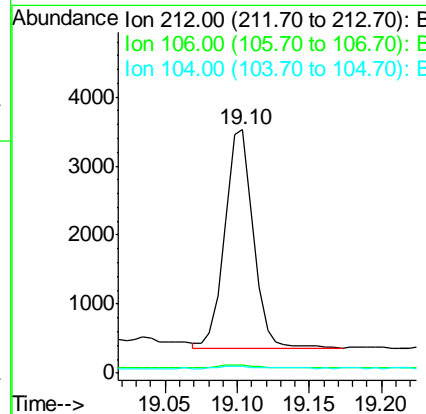
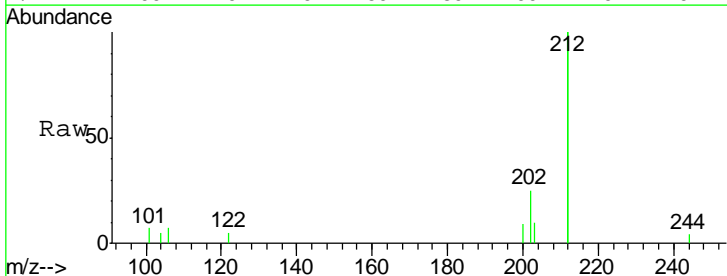
mohammad  
 7/3/2019 10:53:11 PM

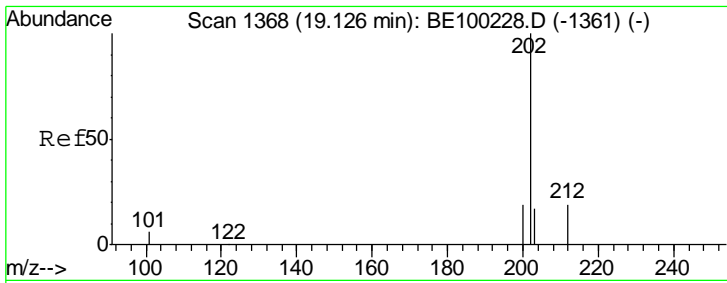


#25  
 Fluoranthene-d10  
 Concen: 0.046 ng  
 RT: 19.10 min Scan# 1364  
 Delta R.T. 0.01 min  
 Lab File: BE100289.D  
 Acq: 2 Jul 2019 6:33

Tgt Ion: 212 Resp: 4312

Ion	Ratio	Lower	Upper
212	100		
106	1.7	1.3	1.9
104	2.2	0.8	1.2#





#26  
 Fluoranthene  
 Concen: 3.095 ng  
 RT: 19.13 min Scan# 1369  
 Delta R.T. 0.01 min  
 Lab File: BE100289.D  
 Acq: 2 Jul 2019 6:33

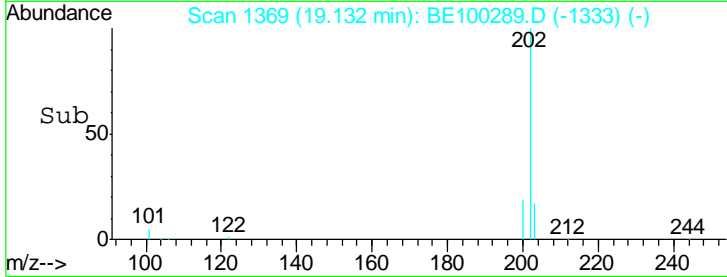
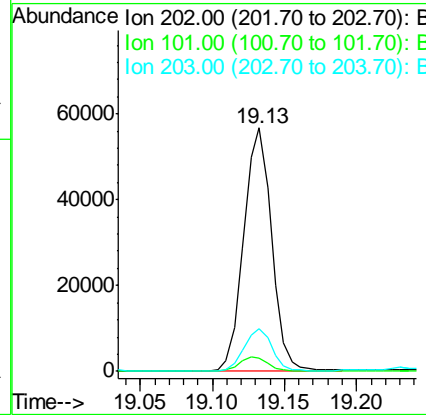
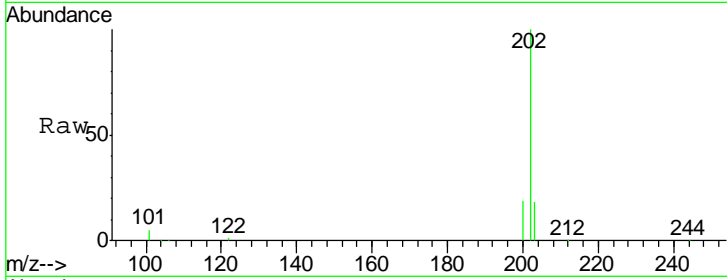
Instrument :  
 BNA\_E  
 ClientSampleId :  
 PST-007-SW050-061819DL

Tgt Ion: 202 Resp: 76415

Ion	Ratio	Lower	Upper
202	100		
101	5.7	4.6	7.0
203	17.3	13.7	20.5

Manual Integrations  
 APPROVED

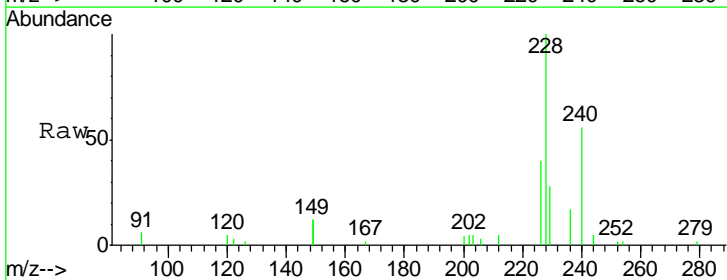
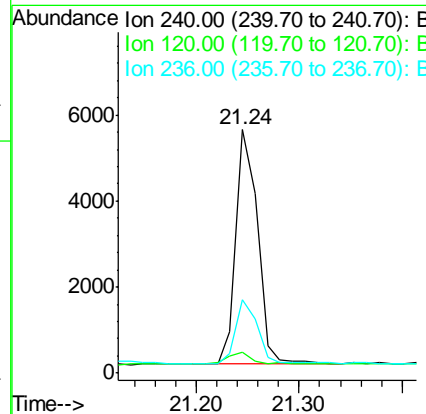
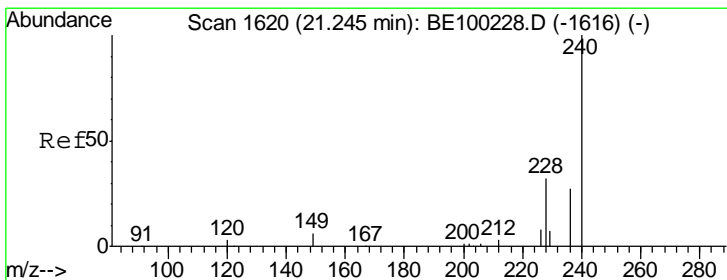
mohammad  
 7/3/2019 10:53:11 PM

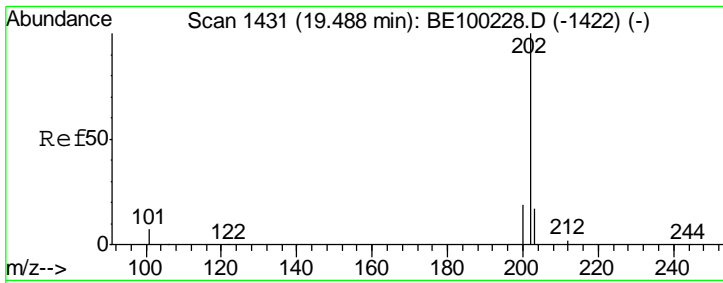


#27  
 Chrysene-d12  
 Concen: 0.400 ng  
 RT: 21.24 min Scan# 1620  
 Delta R.T. 0.00 min  
 Lab File: BE100289.D  
 Acq: 2 Jul 2019 6:33

Tgt Ion: 240 Resp: 7968

Ion	Ratio	Lower	Upper
240	100		
120	8.7	3.3	4.9#
236	30.3	22.6	34.0



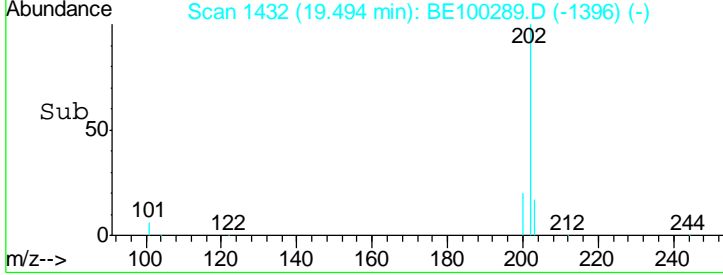
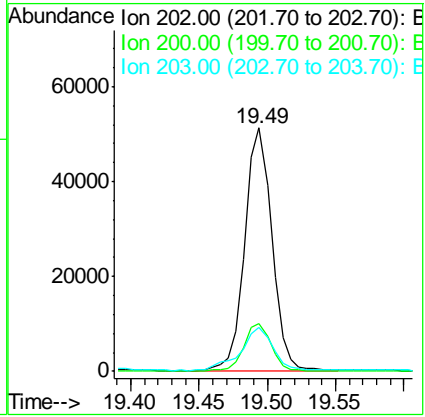
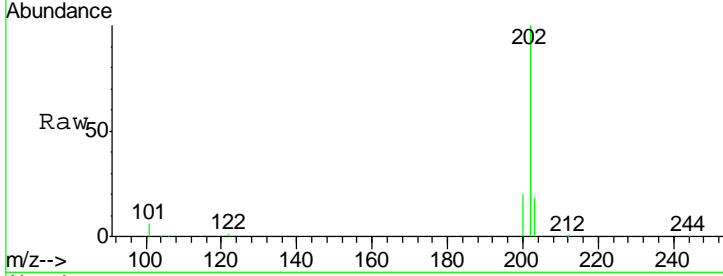


#28  
 Pyrene  
 Concen: 3.317 ng  
 RT: 19.49 min Scan# 1432  
 Delta R.T. 0.01 min  
 Lab File: BE100289.D  
 Acq: 2 Jul 2019 6:33

**Instrument :**  
 BNA\_E  
**ClientSampled :**  
 PST-007-SW050-061819DL

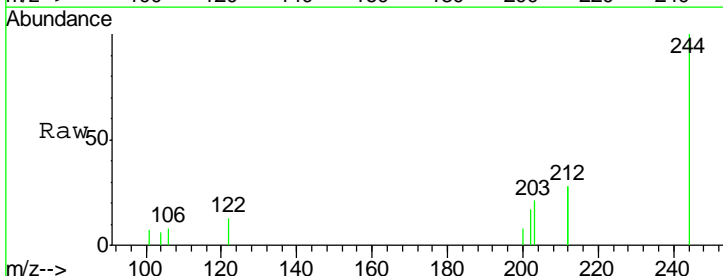
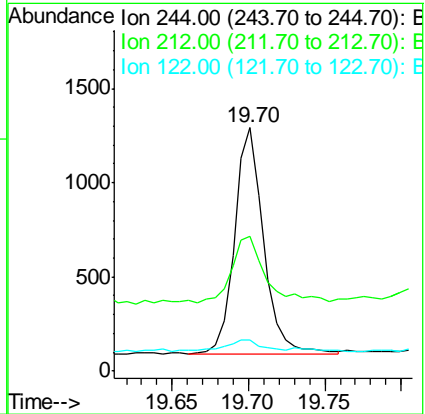
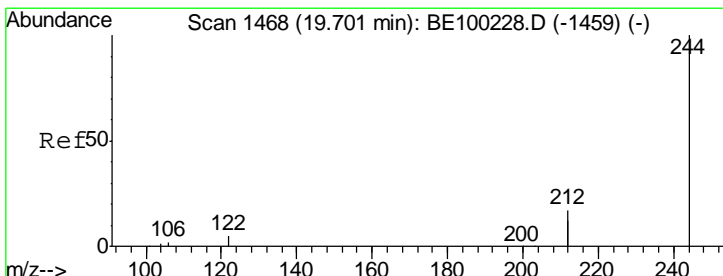
Tgt Ion	Resp	Lower	Upper
202	100		
200	19.9	15.6	23.4
203	21.0	14.0	21.0#

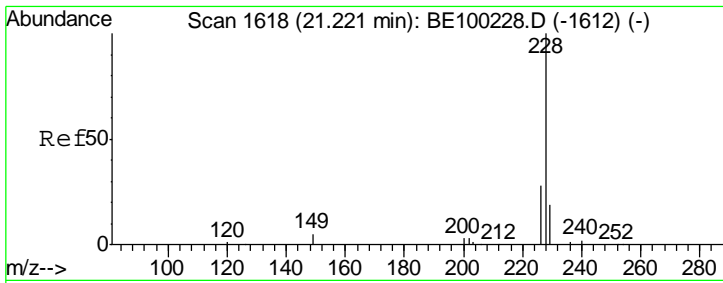
**Manual Integrations**  
**APPROVED**  
 mohammad  
 7/3/2019 10:53:11 PM



#29  
 Terphenyl-d14  
 Concen: 0.096 ng  
 RT: 19.70 min Scan# 1468  
 Delta R.T. 0.00 min  
 Lab File: BE100289.D  
 Acq: 2 Jul 2019 6:33

Tgt Ion	Resp	Lower	Upper
244	100		
212	55.4	27.3	40.9#
122	12.6	4.7	7.1#





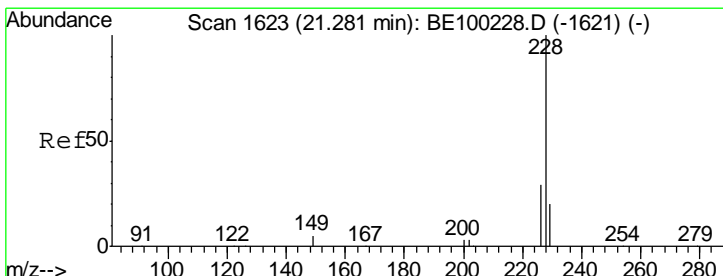
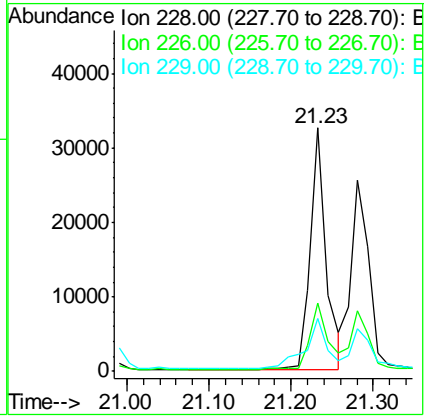
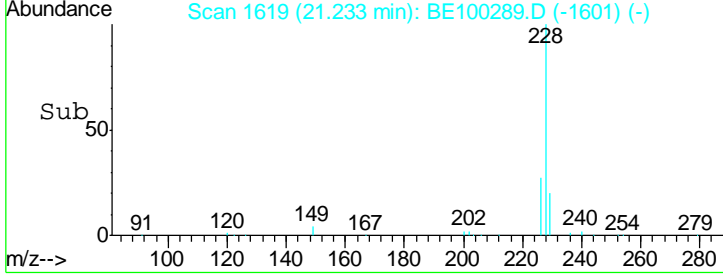
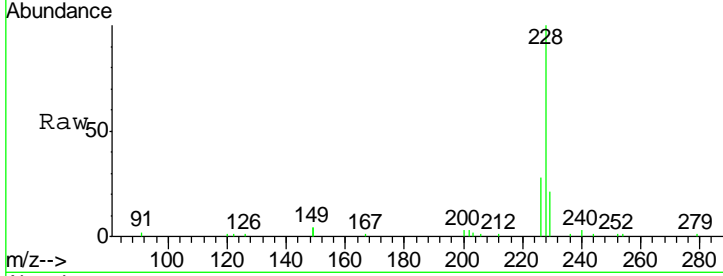
#30  
 Benzo(a)anthracene  
 Concen: 1.644 ng  
 RT: 21.23 min Scan# 1619  
 Delta R.T. 0.01 min  
 Lab File: BE100289.D  
 Acq: 2 Jul 2019 6:33

**Instrument :**  
 BNA\_E  
**ClientSampled :**  
 PST-007-SW050-061819DL

Tgt Ion	Resp	Lower	Upper
228	43076		
226	28.2	23.2	34.8
229	21.5	15.7	23.5

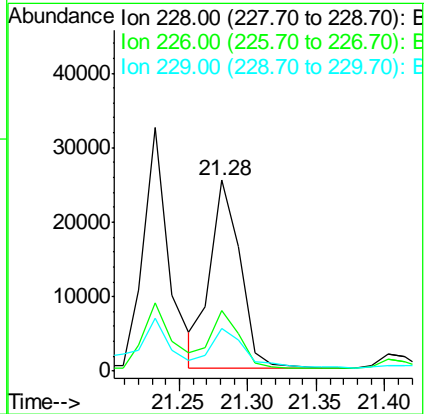
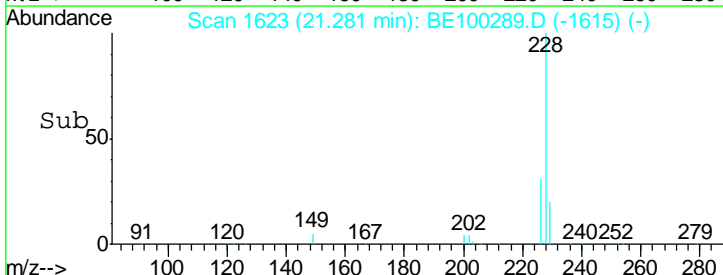
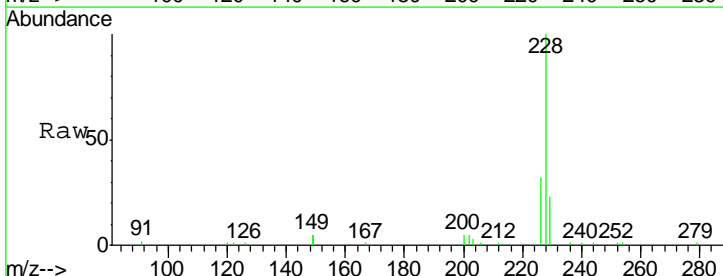
**Manual Integrations**  
**APPROVED**

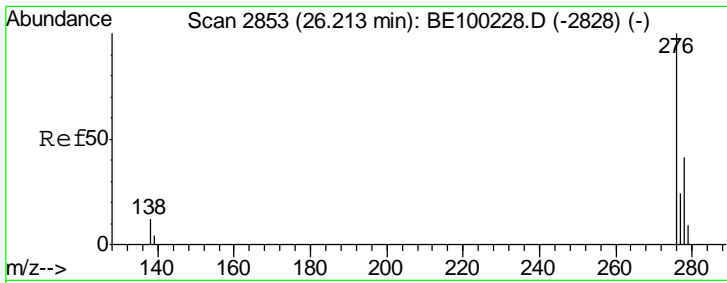
mohammad  
 7/3/2019 10:53:11 PM



#31  
 Chrysene  
 Concen: 1.449 ng  
 RT: 21.28 min Scan# 1623  
 Delta R.T. 0.00 min  
 Lab File: BE100289.D  
 Acq: 2 Jul 2019 6:33

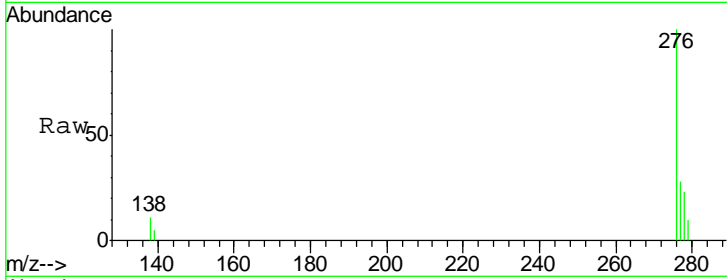
Tgt Ion	Resp	Lower	Upper
228	38107		
226	31.5	23.9	35.9
229	22.6	16.5	24.7





#33  
 Indeno(1,2,3-cd)pyrene  
 Concen: 0.627 ng  
 RT: 26.24 min Scan# 2861  
 Delta R.T. 0.03 min  
 Lab File: BE100289.D  
 Acq: 2 Jul 2019 6:33

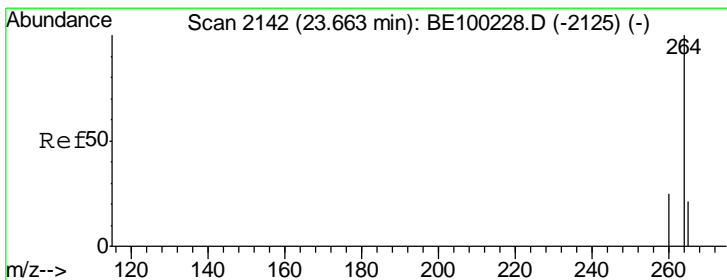
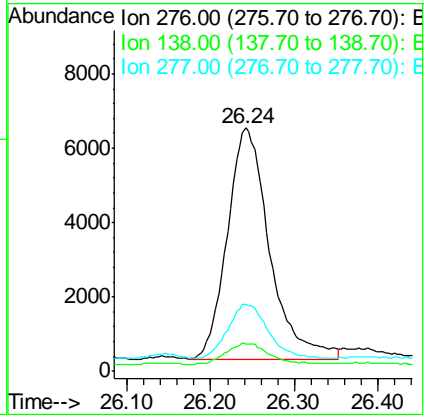
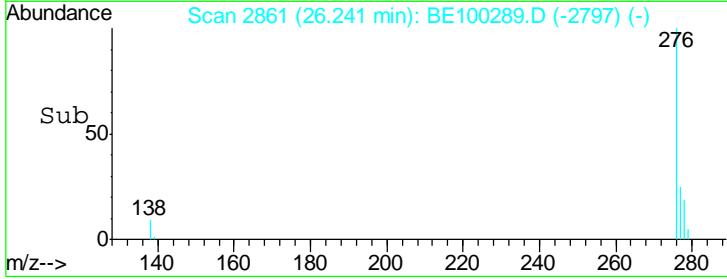
**Instrument :**  
 BNA\_E  
**ClientSampleId :**  
 PST-007-SW050-061819DL



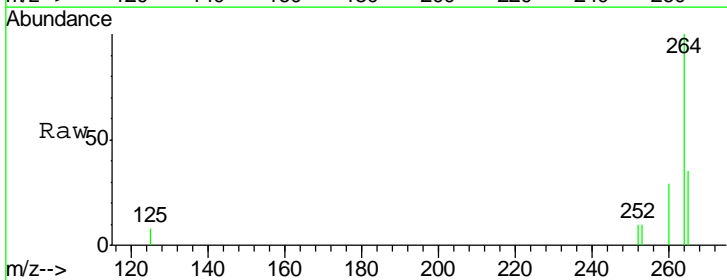
Tgt Ion: 276 Resp: 21811

Ion	Ratio	Lower	Upper
276	100		
138	8.8	9.4	14.0#
277	22.4	19.2	28.8

**Manual Integrations**  
**APPROVED**  
 mohammad  
 7/3/2019 10:53:11 PM

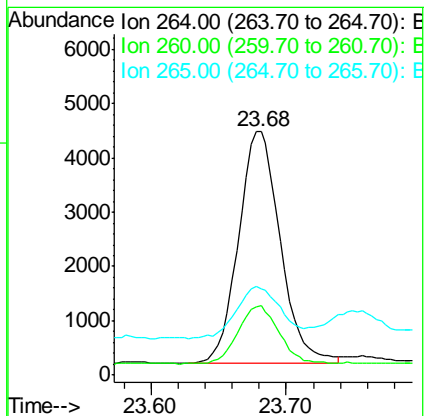
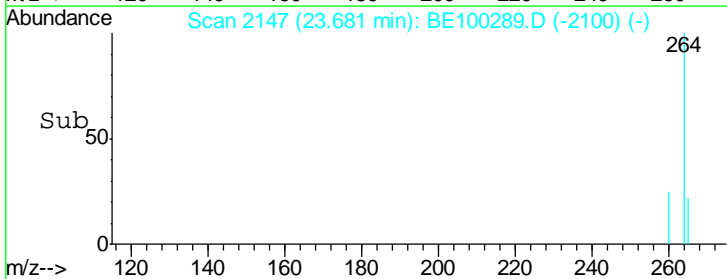


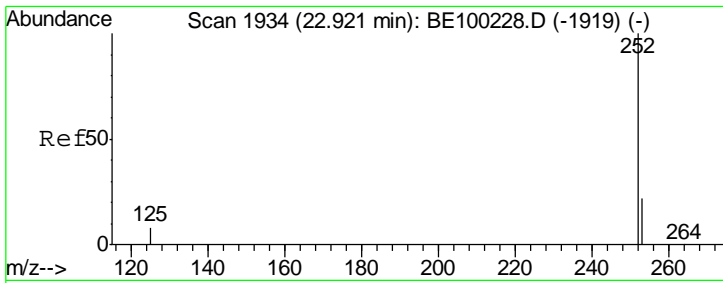
#34  
 Perylene-d12  
 Concen: 0.400 ng  
 RT: 23.68 min Scan# 2147  
 Delta R.T. 0.02 min  
 Lab File: BE100289.D  
 Acq: 2 Jul 2019 6:33



Tgt Ion: 264 Resp: 9194

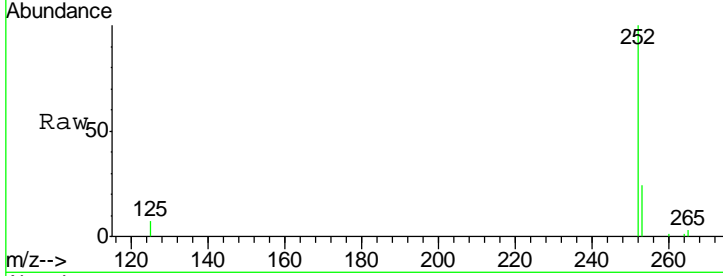
Ion	Ratio	Lower	Upper
264	100		
260	28.7	20.8	31.2
265	35.4	21.8	32.6#





#35  
 Benzo(b)fluoranthene  
 Concen: 1.936 ng  
 RT: 22.94 min Scan# 1938  
 Delta R.T. 0.01 min  
 Lab File: BE100289.D  
 Acq: 2 Jul 2019 6:33

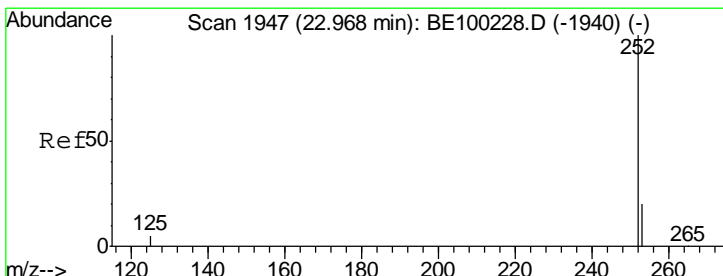
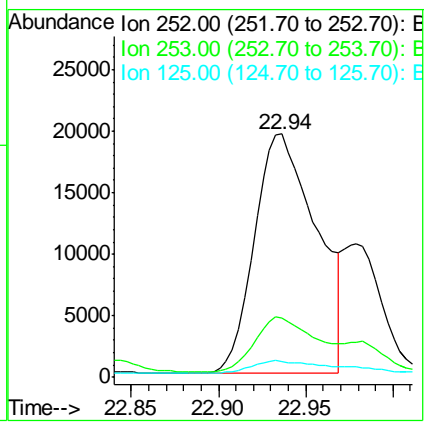
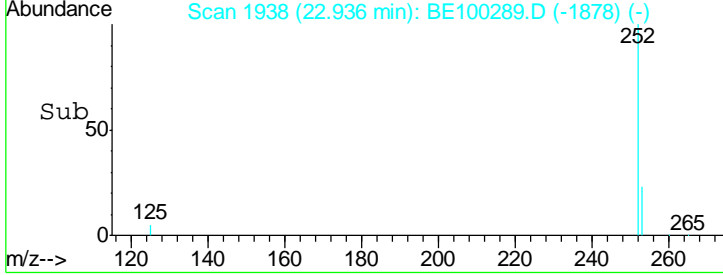
Instrument :  
 BNA\_E  
 ClientSampled :  
 PST-007-SW050-061819DL



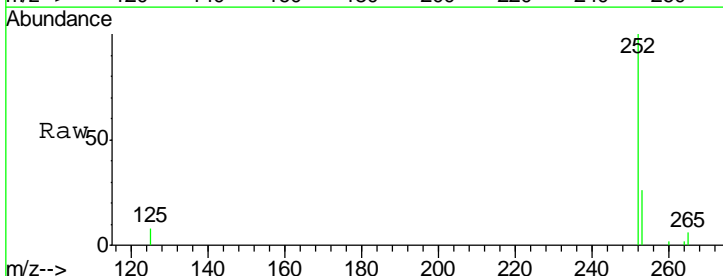
Tgt Ion: 252 Resp: 48255

Ion	Ratio	Lower	Upper
252	100		
253	24.3	19.2	28.8
125	6.6	7.4	11.0#

Manual Integrations  
 APPROVED  
 mohammad  
 7/3/2019 10:53:11 PM

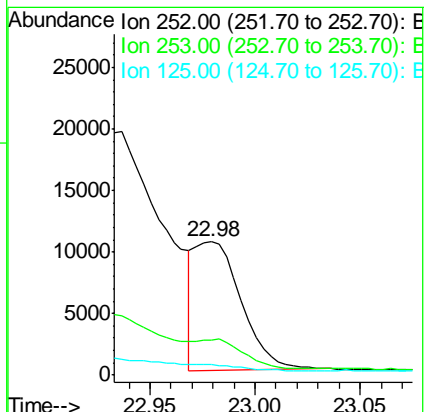
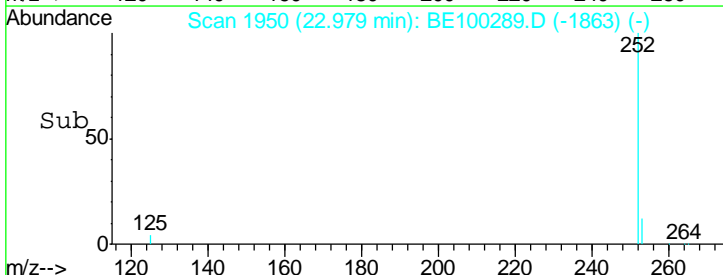


#36  
 Benzo(k)fluoranthene  
 Concen: 0.570 ng m  
 RT: 22.98 min Scan# 1950  
 Delta R.T. 0.01 min  
 Lab File: BE100289.D  
 Acq: 2 Jul 2019 6:33

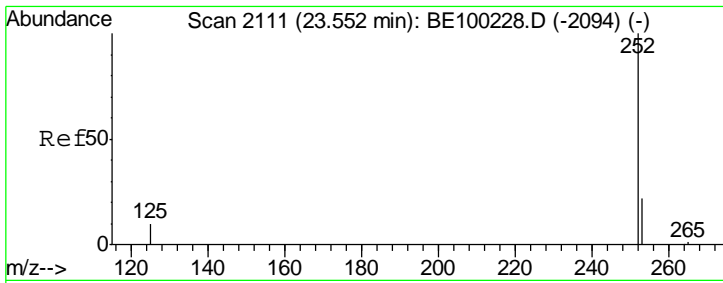


Tgt Ion: 252 Resp: 15871

Ion	Ratio	Lower	Upper
252	100		
253	26.3	17.9	26.9
125	7.6	5.0	7.4#

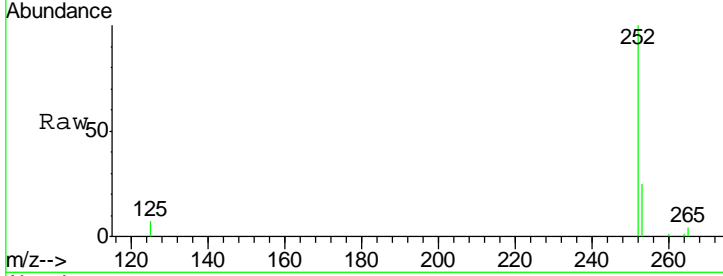






#37  
 Benzo(a)pyrene  
 Concen: 1.410 ng m  
 RT: 23.57 min Scan# 2115  
 Delta R.T. 0.01 min  
 Lab File: BE100289.D  
 Acq: 2 Jul 2019 6:33

**Instrument :**  
 BNA\_E  
**ClientSampled :**  
 PST-007-SW050-061819DL

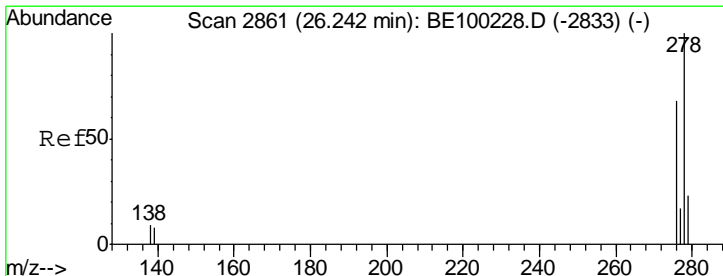
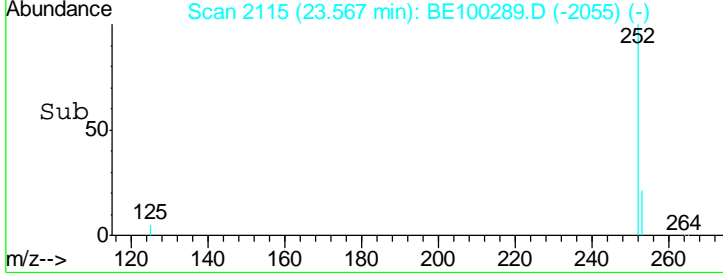
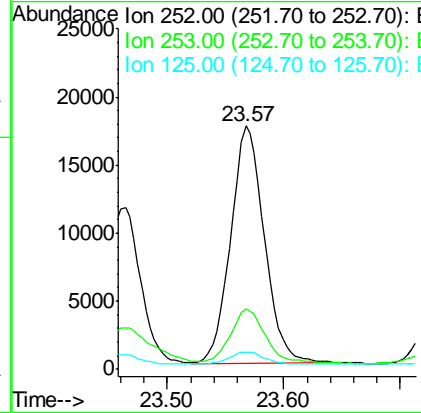


Tgt Ion: 252 Resp: 35230

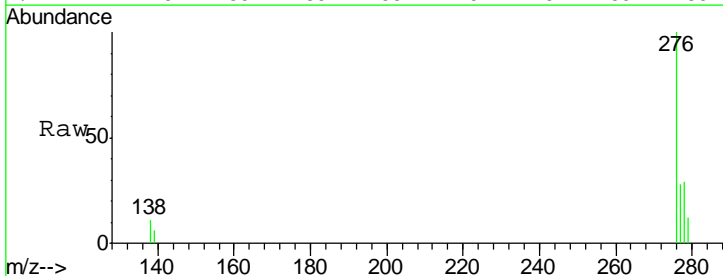
Ion	Ratio	Lower	Upper
252	100		
253	25.0	19.6	29.4
125	7.2	9.0	13.6#

**Manual Integrations**  
**APPROVED**

mohammad  
 7/3/2019 10:53:11 PM

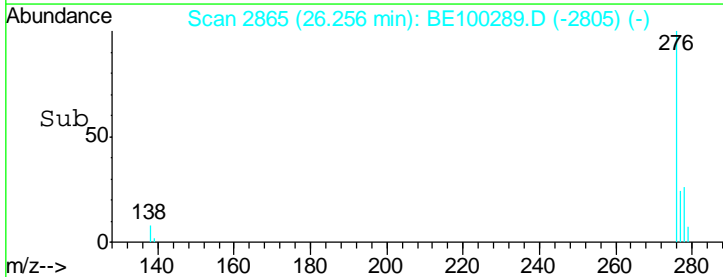
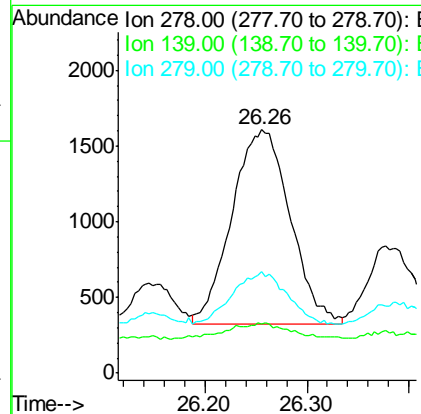


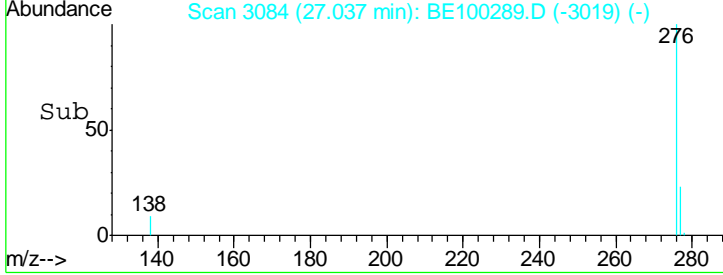
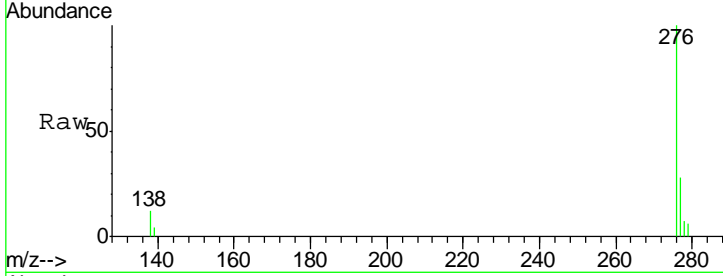
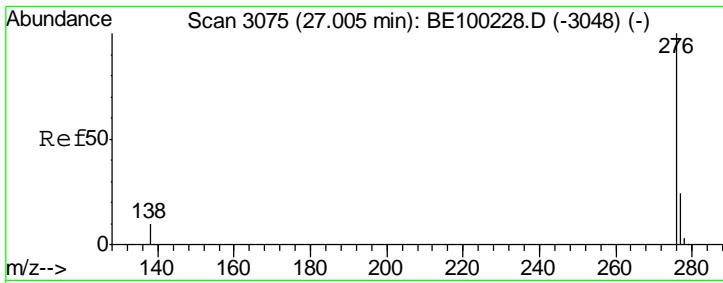
#38  
 Dibenzo(a,h)anthracene  
 Concen: 0.195 ng  
 RT: 26.26 min Scan# 2865  
 Delta R.T. 0.01 min  
 Lab File: BE100289.D  
 Acq: 2 Jul 2019 6:33



Tgt Ion: 278 Resp: 5086

Ion	Ratio	Lower	Upper
278	100		
139	20.3	8.2	12.2#
279	41.8	20.3	30.5#





#39  
 Benzo(a,h,i)perylene  
 Concen: 0.770 ng  
 RT: 27.04 min Scan# 3084  
 Delta R.T. 0.03 min  
 Lab File: BE100289.D  
 Acq: 2 Jul 2019 6:33

Tot Ion	Ratio	Lower	Upper
276	100		
277	27.9	20.2	30.2
138	11.6	9.0	13.6

Instrument : BNA\_E  
 ClientSampled : PST-007-SW050-061819DL

Manual Integrations  
**APPROVED**  
 mohammad  
 7/3/2019 10:53:11 PM

