

Data Path : Z:\SVOASRV\HPCHEM1\BNA_E\DATA\BE071818\
 Data File : BE096989.D
 Acq On : 18 Jul 2018 12:18
 Operator : SJ/JU
 Sample : J3967-07
 Misc :
 ALS Vial : 4 Sample Multiplier: 1

Instrument :
 BNA_E
ClientSampleId :
 DB1E4

Manual Integrations
APPROVED
 Sohil
 7/19/2018 11:36:40 AM

Quant Time: Jul 18 15:44:15 2018
 Quant Method : Z:\SVOASRV\HPCHEM1\BNA_E\METHODS\SOM-EPA-SIM-BE071718.M
 Quant Title : ASP BNA STANDARDS FOR 5 POINT CALIBRATION
 QLast Update : Wed Jul 18 15:28:33 2018
 Response via : Initial Calibration

Internal Standards	R.T.	QIon	Response	Conc	Units	Dev(Min)
1) 1,4-Dichlorobenzene-d4	7.40	152	1476	0.40	ng/ul	0.00
2) Naphthalene-d8	10.14	136	8022	0.40	ng/ul	0.00
6) Acenaphthene-d10	14.03	164	5273	0.40	ng/ul	0.00
10) Phenanthrene-d10	16.78	188	13169m	0.40	ng/ul	0.00
16) Chrysene-d12	20.98	240	14242m	0.40	ng/ul	0.00
20) Perylene-d12	23.21	264	12309m	0.40	ng/ul	0.00
System Monitoring Compounds						
4) 2-Methylnaphthalene-d10	11.74	152	4362	0.34	ng/ul	0.00
14) Fluoranthene-d10	18.81	212	14555m	0.36	ng/ul	0.00
Target Compounds						
11) Pentachlorophenol	16.43	266	168m	0.113	ng/ul	Qvalue

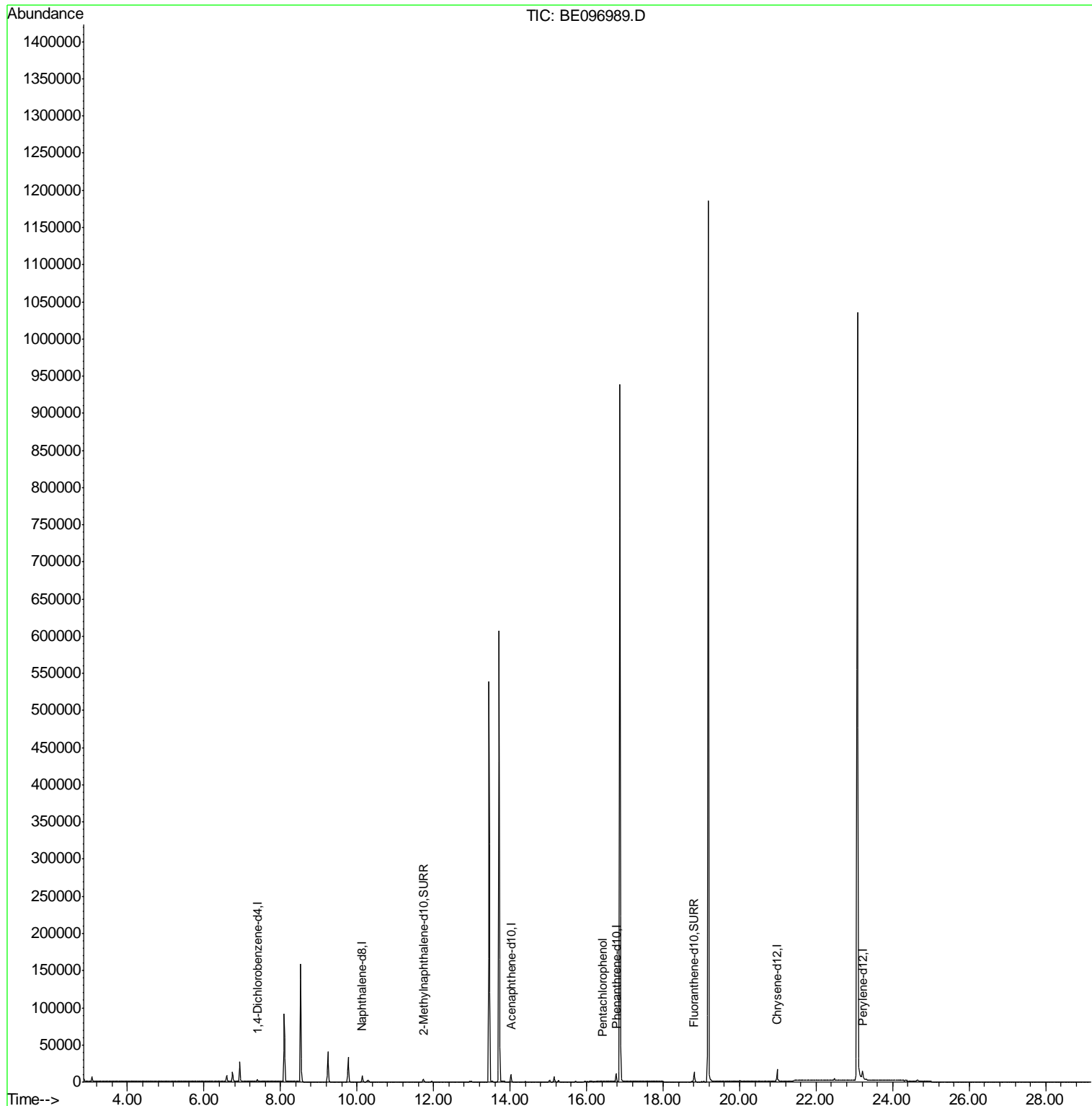
(#) = qualifier out of range (m) = manual integration (+) = signals summed

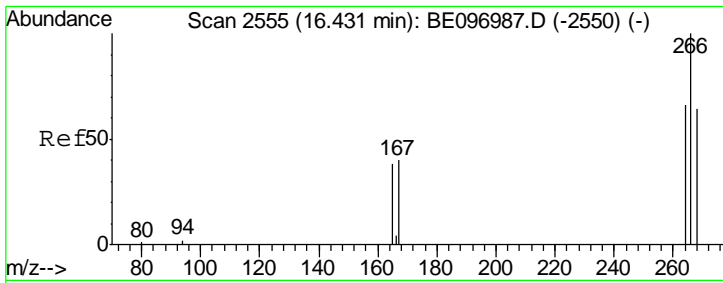
Data Path : Z:\SVOASRV\HPCHEM1\BNA_E\DATA\BE071818\
 Data File : BE096989.D
 Acq On : 18 Jul 2018 12:18
 Operator : SJ/JU
 Sample : J3967-07
 Misc :
 ALS Vial : 4 Sample Multiplier: 1

Instrument :
 BNA_E
ClientSampled :
 DB1E4

Manual Integrations
APPROVED
 Sohil
 7/19/2018 11:36:40 AM

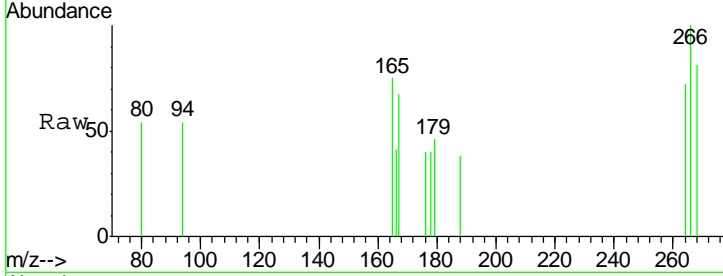
Quant Time: Jul 18 15:44:15 2018
 Quant Method : Z:\SVOASRV\HPCHEM1\BNA_E\METHODS\SOM-EPA-SIM-BE071718.M
 Quant Title : ASP BNA STANDARDS FOR 5 POINT CALIBRATION
 QLast Update : Wed Jul 18 15:28:33 2018
 Response via : Initial Calibration





#11
 Pentachlorophenol
 Concen: 0.113 ng/ul m
 RT: 16.43 min Scan# 2554
 Delta R.T. -0.00 min
 Lab File: BE096989.D
 Acq: 18 Jul 2018 12:18

Instrument :
 BNA_E
ClientSampled :
 DB1E4



Tgt Ion: 266 Resp: 168

Ion	Ratio	Lower	Upper
266	100		
264	4.2	47.9	71.9#
268	1.8	49.8	74.8#

Manual Integrations
APPROVED
 Sohil
 7/19/2018 11:36:40 AM

