

Data Path : Z:\SVOASRV\HPCHEM1\BNA_E\DATA\BE071918\
 Data File : BE097007.D
 Acq On : 19 Jul 2018 16:26
 Operator : SJ/JU
 Sample : J4014-05
 Misc :
 ALS Vial : 9 Sample Multiplier: 1

Instrument :
 BNA_E
 ClientSampleId :
 RE122D3-071218

Quant Time: Jul 20 04:32:22 2018
 Quant Method : Z:\SVOASRV\HPCHEM1\BNA_E\METHODS\8270-SIM-BE071618.M
 Quant Title : ASP BNA STANDARDS FOR 5 POINT CALIBRATION
 QLast Update : Tue Jul 17 15:02:56 2018
 Response via : Initial Calibration

Internal Standards	R.T.	QIon	Response	Conc	Units	Dev(Min)
1) 1,4-Dichlorobenzene-d4	7.40	152	1408	0.40	ng	0.00
7) Naphthalene-d8	10.15	136	6557	0.40	ng	0.00
13) Acenaphthene-d10	14.01	164	4015	0.40	ng	-0.01
19) Phenanthrene-d10	16.76	188	12169	0.40	ng	-0.01
27) Chrysene-d12	20.98	240	11895	0.40	ng	0.00
34) Perylene-d12	23.21	264	10652	0.40	ng	0.00

System Monitoring Compounds

4) 2-Fluorophenol	5.06	112	697	0.21	ng	0.01
5) Phenol-d6	6.59	99	591	0.11	ng	0.00
8) Nitrobenzene-d5	8.53	82	2280	0.48	ng	0.00
11) 2-Methylnaphthalene-d10	11.73	152	3864	0.40	ng	0.00
14) 2,4,6-Tribromophenol	15.52	330	532	0.57	ng	0.00
15) 2-Fluorobiphenyl	12.63	172	7288	0.49	ng	-0.01
25) Fluoranthene-d10	18.81	212	60102	0.57	ng	0.00
29) Terphenyl-d14	19.43	244	15306	0.67	ng	0.00

Target Compounds

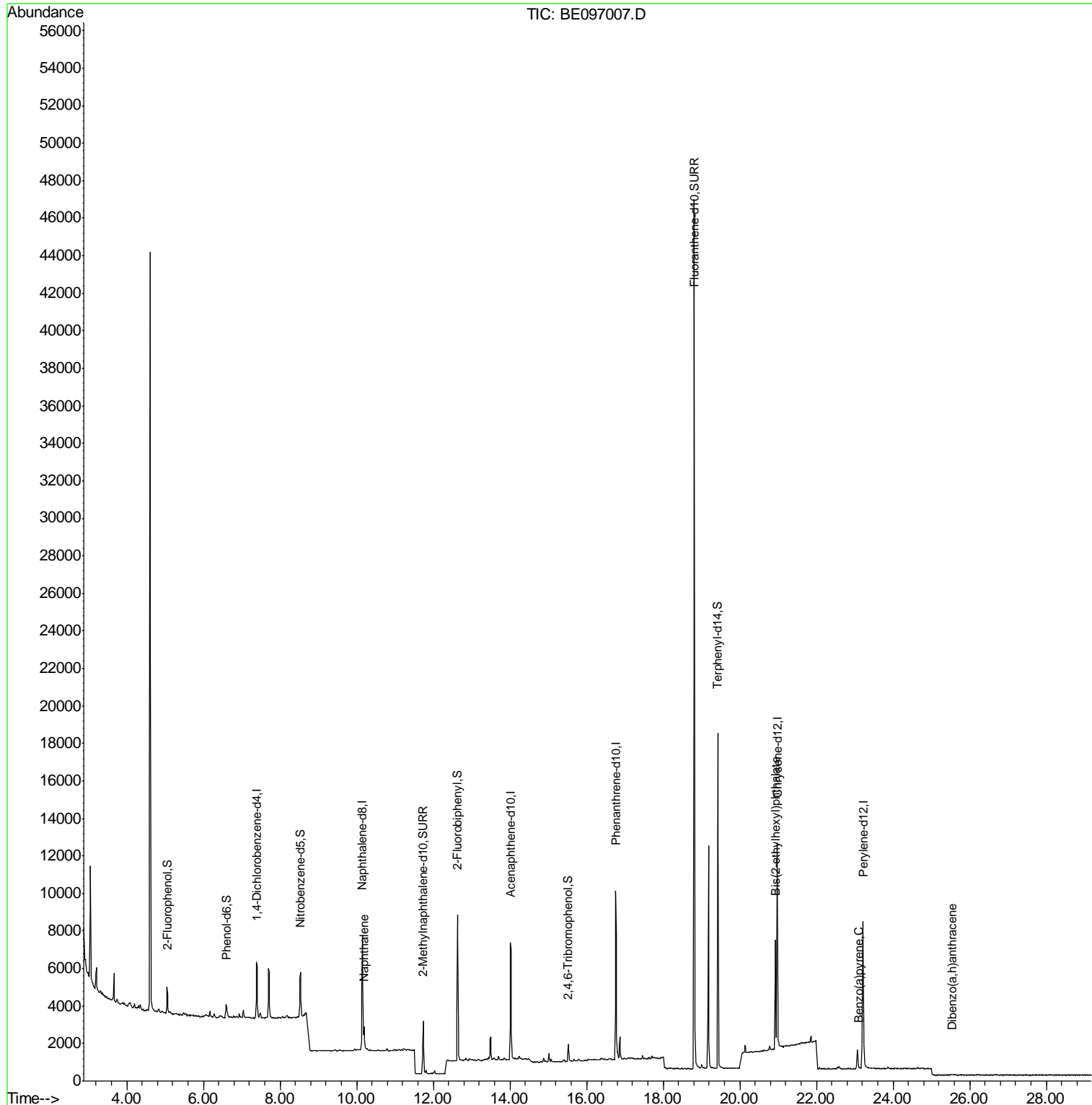
Target Compounds	R.T.	QIon	Response	Conc	Units	Qvalue
9) Naphthalene	10.20	128	1844	0.031	ng	# 90
22) Pentachlorophenol	16.44	266	7	Below	Cal	95
32) Bis(2-ethylhexyl)phthalate	20.93	149	7249	0.256	ng	# 100
37) Benzo(a)pyrene	23.12	252	15	0.102	ng	# 1
38) Dibenzo(a,h)anthracene	25.53	278	15	0.118	ng	# 1

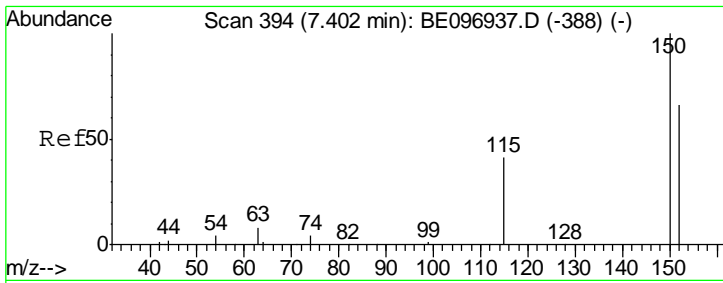
(#) = qualifier out of range (m) = manual integration (+) = signals summed

Data Path : Z:\SVOASRV\HPCHEM1\BNA_E\DATA\BE071918\
Data File : BE097007.D
Acq On : 19 Jul 2018 16:26
Operator : SJ/JU
Sample : J4014-05
Misc :
ALS Vial : 9 Sample Multiplier: 1

Instrument :
BNA_E
ClientSampleId :
RE122D3-071218

Quant Time: Jul 20 04:32:22 2018
Quant Method : Z:\SVOASRV\HPCHEM1\BNA_E\METHODS\8270-SIM-BE071618.M
Quant Title : ASP BNA STANDARDS FOR 5 POINT CALIBRATION
QLast Update : Tue Jul 17 15:02:56 2018
Response via : Initial Calibration

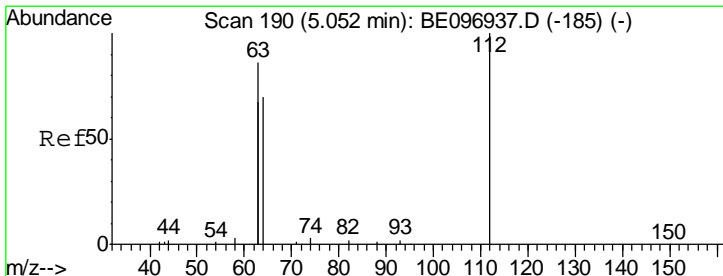
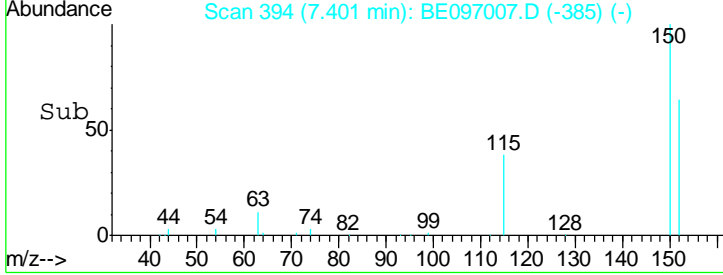
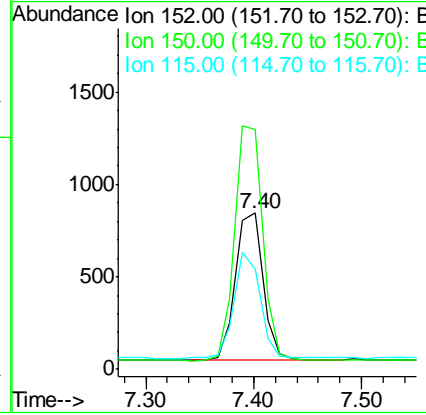
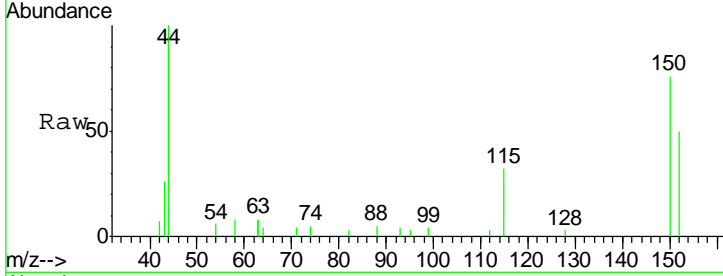




#1
 1,4-Dichlorobenzene-d4
 Concen: 0.400 ng
 RT: 7.40 min Scan# 394
 Delta R.T. -0.00 min
 Lab File: BE097007.D
 Acq: 19 Jul 2018 16:26

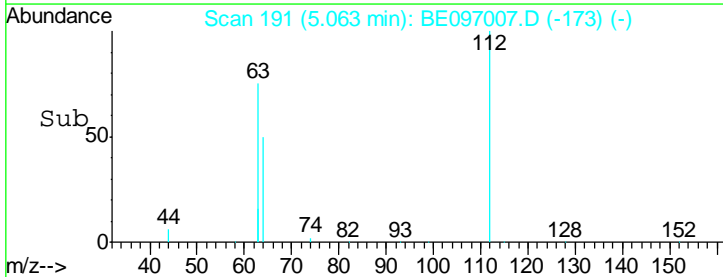
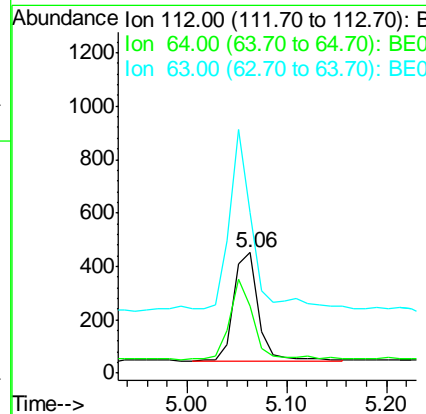
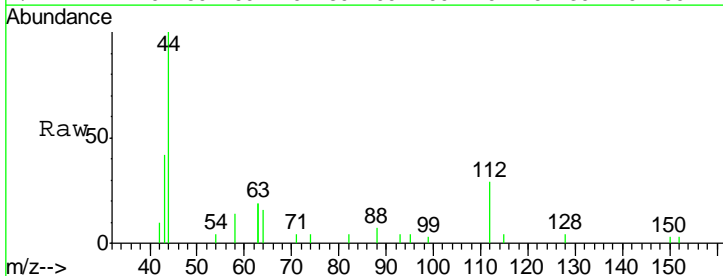
Instrument :
 BNA_E
 ClientSampleId :
 RE122D3-071218

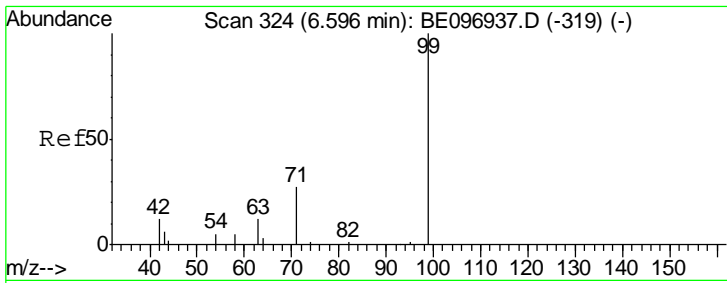
Tgt Ion	Resp	Lower	Upper
152	1408		
152	100		
150	153.2	117.2	175.8
115	64.1	57.0	85.6



#4
 2-Fluorophenol
 Concen: 0.207 ng
 RT: 5.06 min Scan# 191
 Delta R.T. 0.01 min
 Lab File: BE097007.D
 Acq: 19 Jul 2018 16:26

Tgt Ion	Resp	Lower	Upper
112	697		
112	100		
64	72.0	60.1	90.1
63	155.7	116.8	175.2

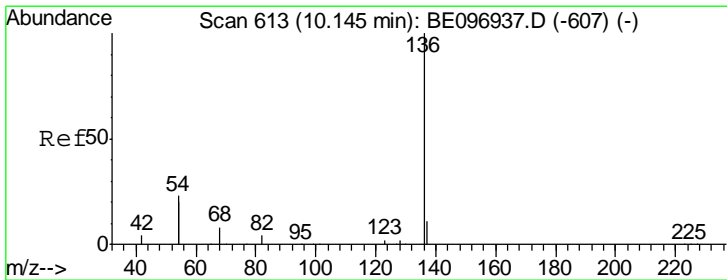
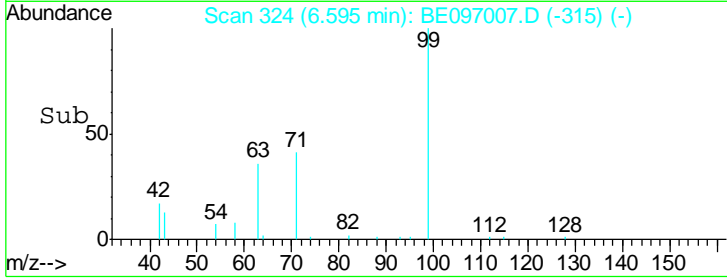
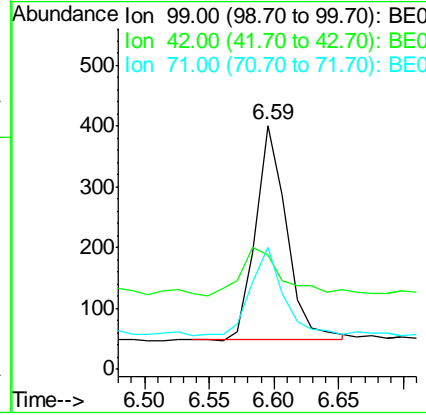
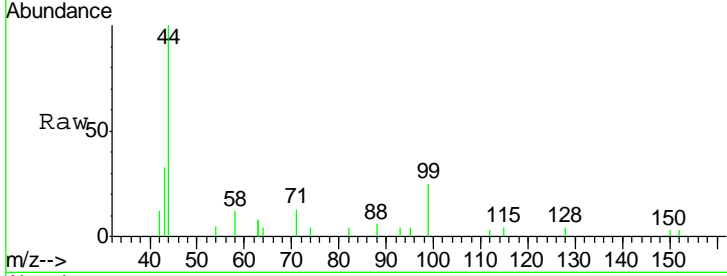




#5
 Phenol-d6
 Concen: 0.115 ng
 RT: 6.59 min Scan# 324
 Delta R.T. -0.00 min
 Lab File: BE097007.D
 Acq: 19 Jul 2018 16:26

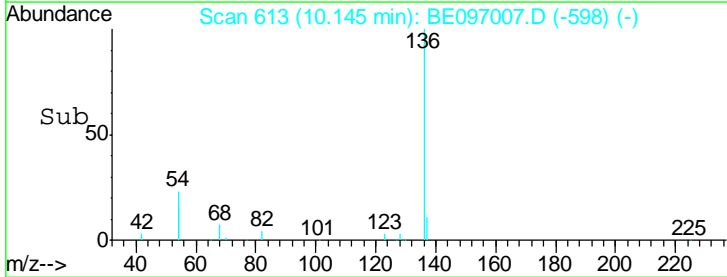
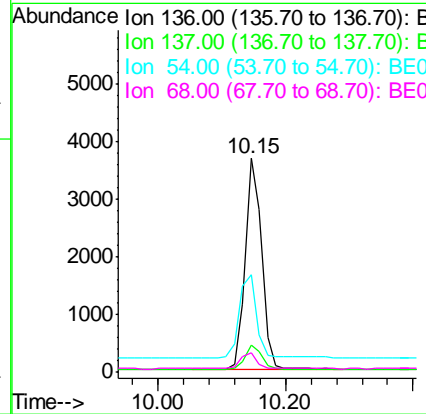
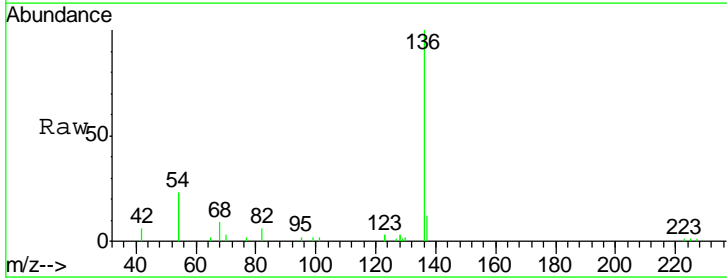
Instrument :
 BNA_E
 ClientSampleId :
 RE122D3-071218

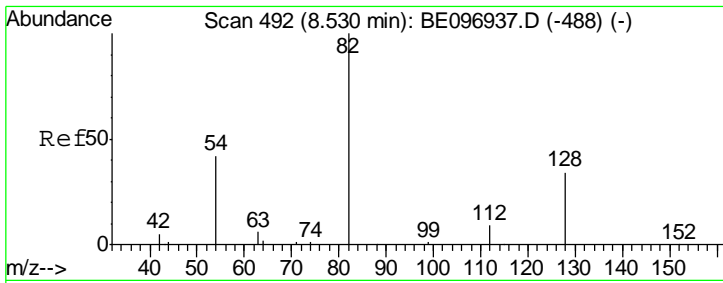
Tgt Ion	Resp	Lower	Upper
99	591		
42	29.3	20.2	30.2
71	42.6	28.4	42.6#



#7
 Naphthalene-d8
 Concen: 0.400 ng
 RT: 10.15 min Scan# 613
 Delta R.T. 0.00 min
 Lab File: BE097007.D
 Acq: 19 Jul 2018 16:26

Tgt Ion	Resp	Lower	Upper
136	6557		
137	12.3	9.5	14.3
54	45.5	29.1	43.7#
68	8.9	6.2	9.2

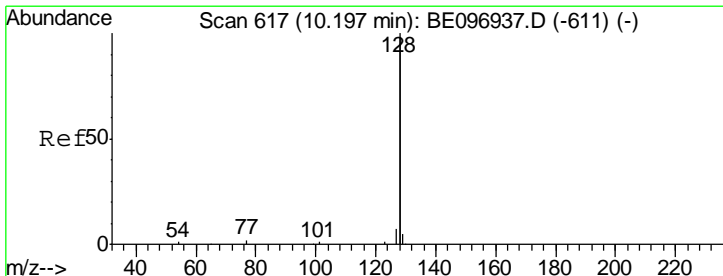
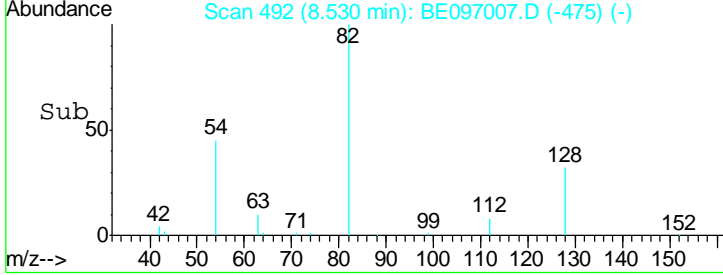
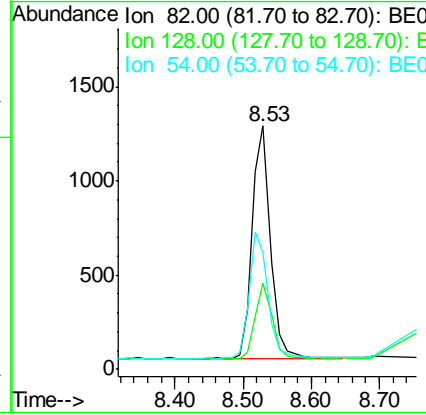
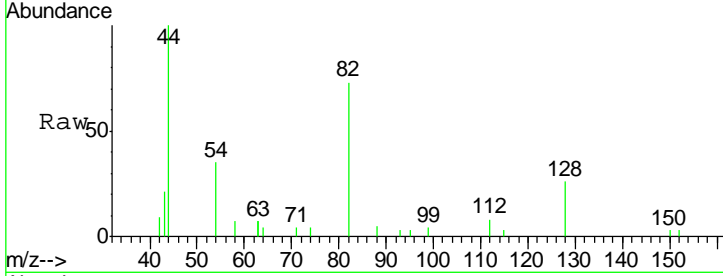




#8
 Nitrobenzene-d5
 Concen: 0.477 ng
 RT: 8.53 min Scan# 492
 Delta R.T. -0.00 min
 Lab File: BE097007.D
 Acq: 19 Jul 2018 16:26

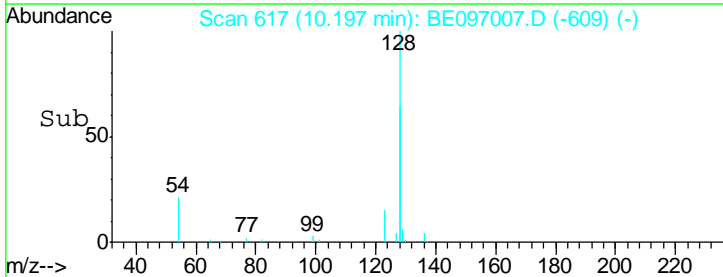
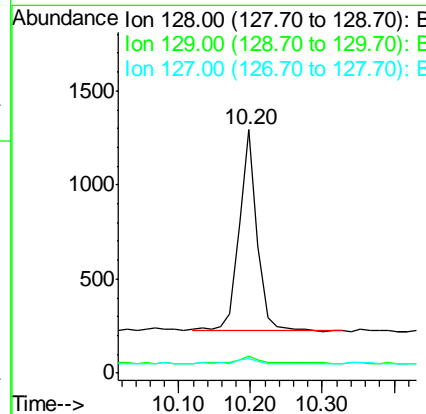
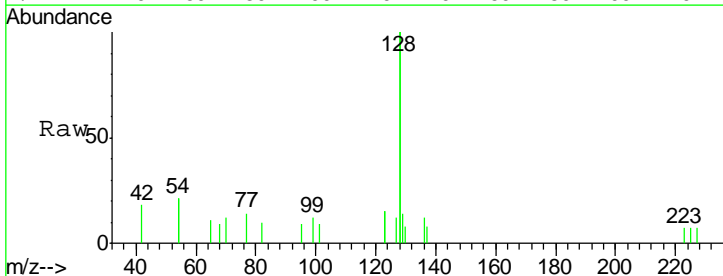
Instrument :
 BNA_E
 ClientSampleId :
 RE122D3-071218

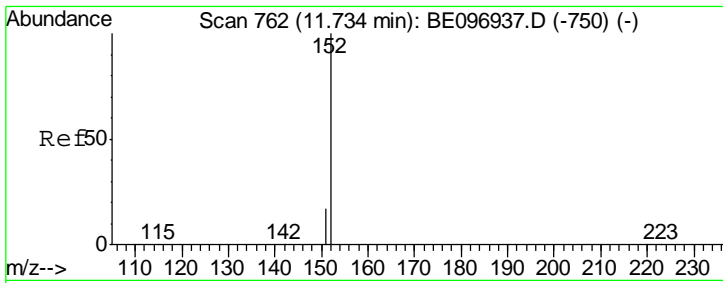
Tgt Ion	Resp	Lower	Upper
82	100		
128	35.1	24.0	36.0
54	47.8	40.0	60.0



#9
 Naphthalene
 Concen: 0.031 ng
 RT: 10.20 min Scan# 617
 Delta R.T. 0.00 min
 Lab File: BE097007.D
 Acq: 19 Jul 2018 16:26

Tgt Ion	Resp	Lower	Upper
128	100		
129	7.0	2.6	3.8#
127	6.2	2.8	4.2#

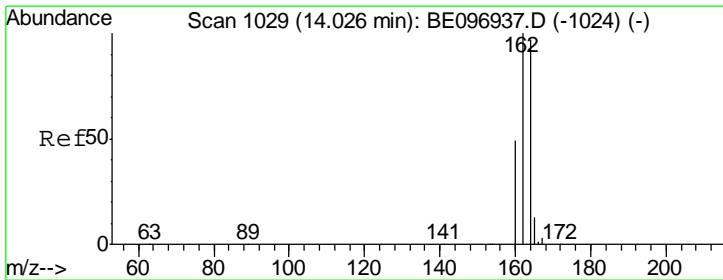
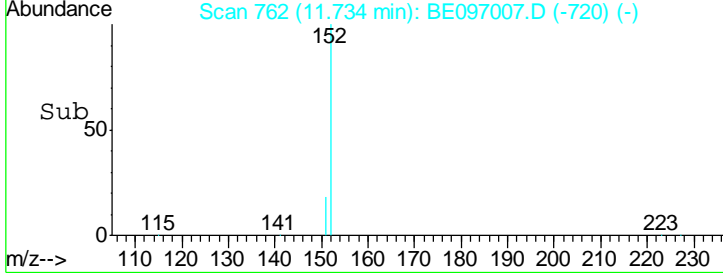
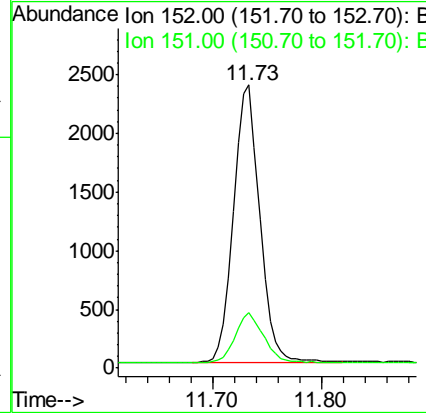
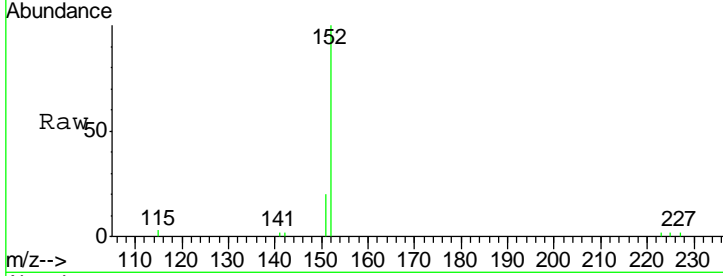




#11
 2-Methylnaphthalene-d10
 Concen: 0.404 ng
 RT: 11.73 min Scan# 762
 Delta R.T. 0.00 min
 Lab File: BE097007.D
 Acq: 19 Jul 2018 16:26

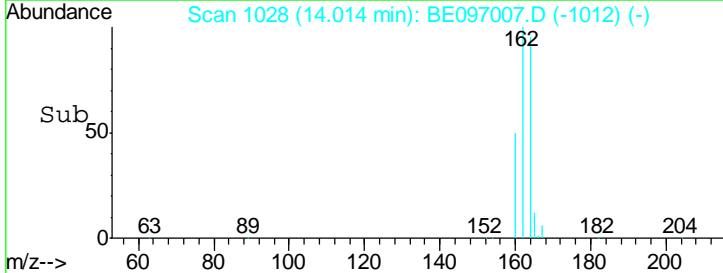
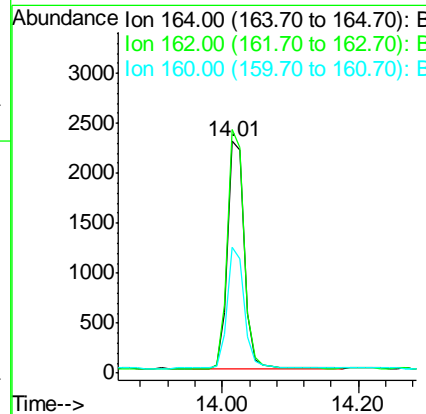
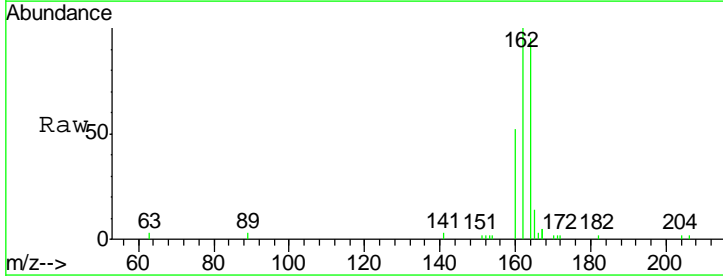
Instrument :
 BNA_E
 ClientSampleId :
 RE122D3-071218

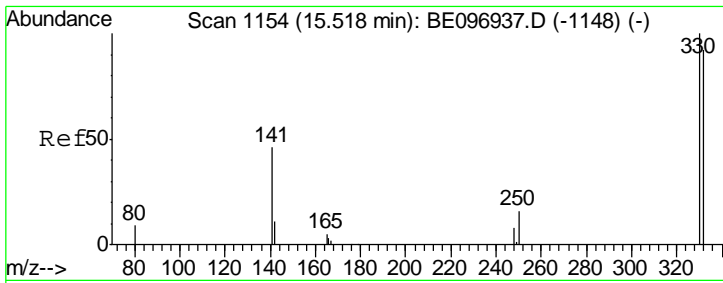
Tgt Ion:152 Resp: 3864
 Ion Ratio Lower Upper
 152 100
 151 19.3 15.4 23.0



#13
 Acenaphthene-d10
 Concen: 0.400 ng
 RT: 14.01 min Scan# 1028
 Delta R.T. -0.01 min
 Lab File: BE097007.D
 Acq: 19 Jul 2018 16:26

Tgt Ion:164 Resp: 4015
 Ion Ratio Lower Upper
 164 100
 162 105.0 83.1 124.7
 160 54.1 37.1 55.7

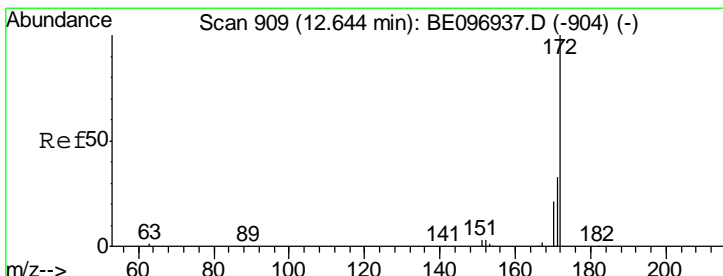
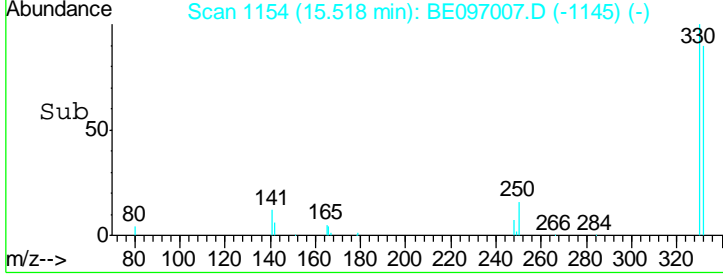
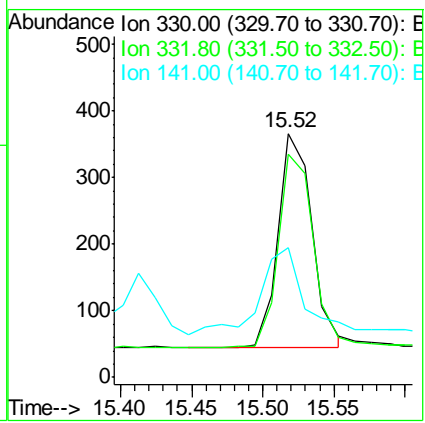
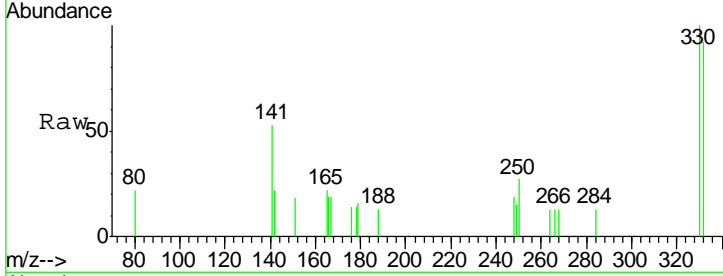




#14
 2,4,6-Tribromophenol
 Concen: 0.568 ng
 RT: 15.52 min Scan# 1154
 Delta R.T. 0.00 min
 Lab File: BE097007.D
 Acq: 19 Jul 2018 16:26

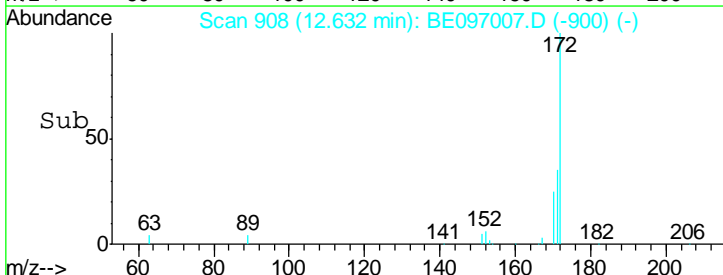
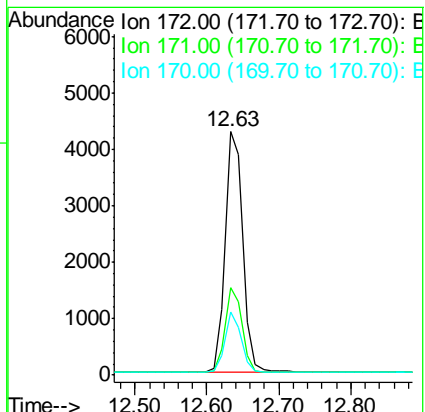
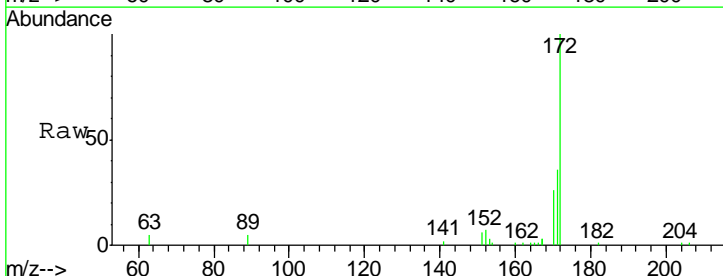
Instrument :
 BNA_E
 ClientSampleID :
 RE122D3-071218

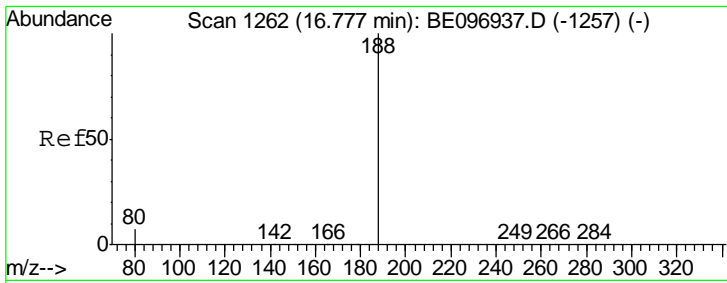
Tgt Ion	Resp	Lower	Upper
330	100		
332	93.4	152.7	229.1#
141	51.3	33.7	50.5#



#15
 2-Fluorobiphenyl
 Concen: 0.488 ng
 RT: 12.63 min Scan# 908
 Delta R.T. -0.01 min
 Lab File: BE097007.D
 Acq: 19 Jul 2018 16:26

Tgt Ion	Resp	Lower	Upper
172	100		
171	35.8	29.9	44.9
170	26.0	21.8	32.8

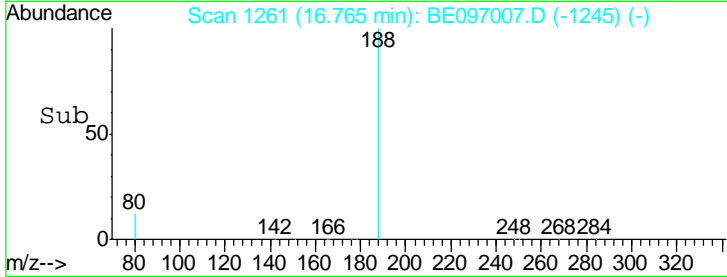
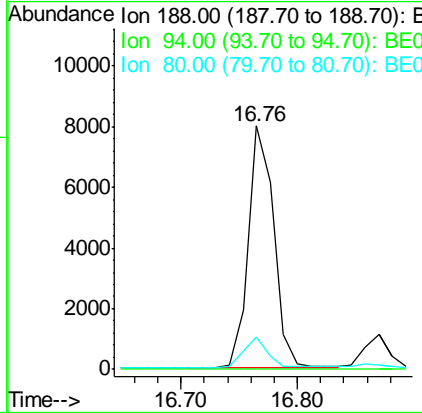
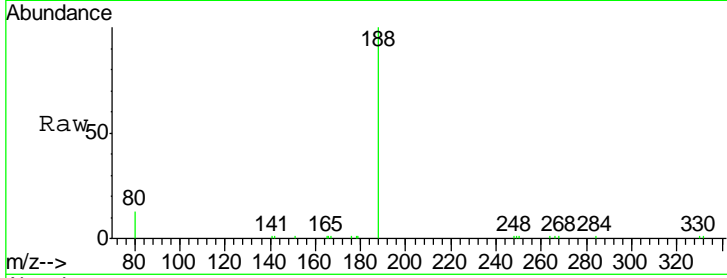




#19
 Phenanthrene-d10
 Concen: 0.400 ng
 RT: 16.76 min Scan# 1261
 Delta R.T. -0.01 min
 Lab File: BE097007.D
 Acq: 19 Jul 2018 16:26

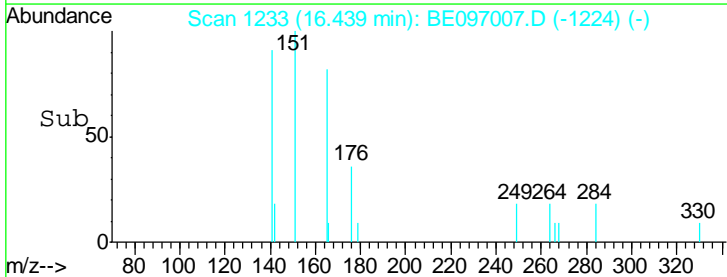
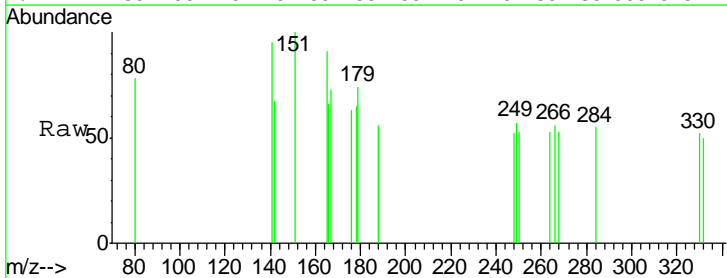
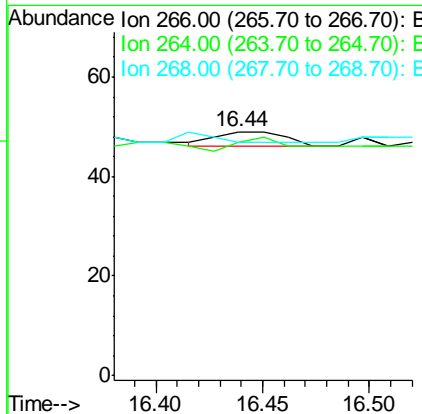
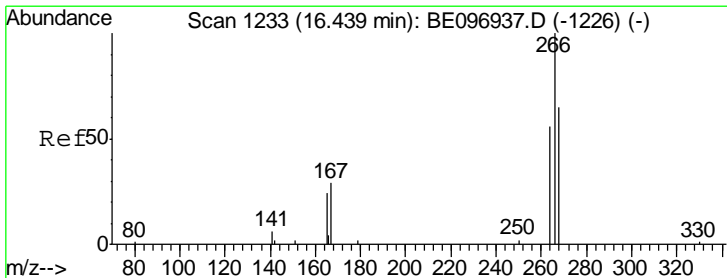
Instrument : BNA_E
 ClientSampleId : RE122D3-071218

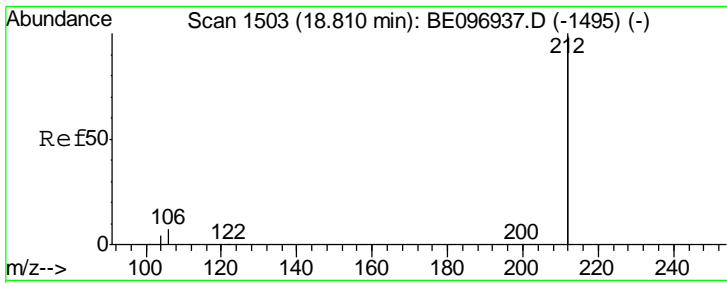
Tgt Ion	Resp	Lower	Upper
188	12169		
94	0.0	3.9	5.9#
80	13.2	3.6	5.4#



#22
 Pentachlorophenol
 Concen: Below Cal
 RT: 16.44 min Scan# 1233
 Delta R.T. 0.00 min
 Lab File: BE097007.D
 Acq: 19 Jul 2018 16:26

Tgt Ion	Resp	Lower	Upper
266	7		
264	95.9	72.5	108.7
268	95.9	73.8	110.6



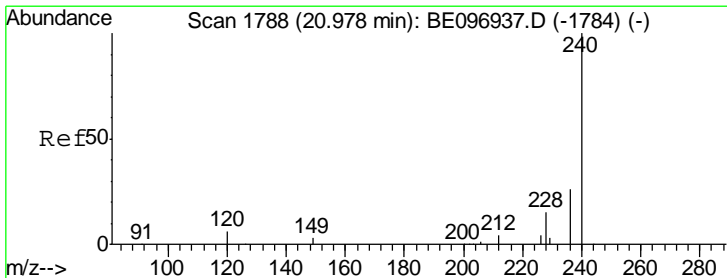
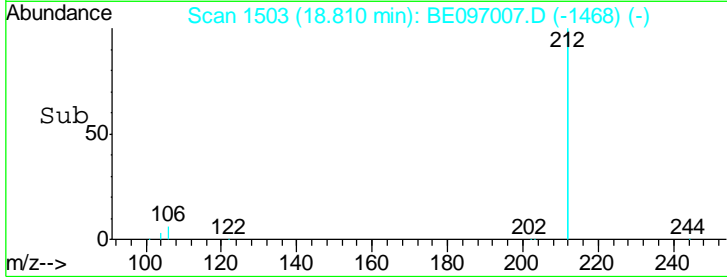
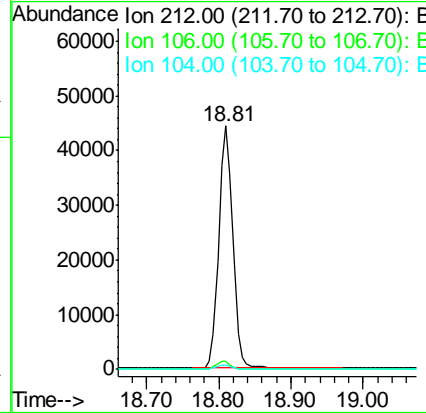
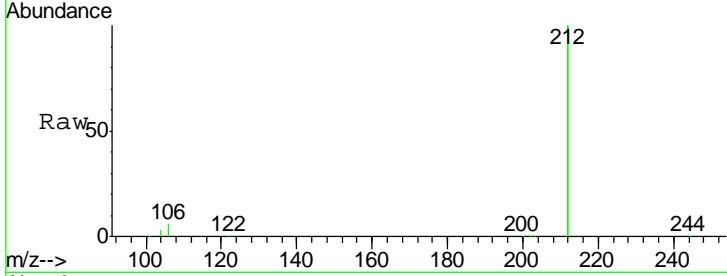


#25
 Fluoranthene-d10
 Concen: 0.568 ng
 RT: 18.81 min Scan# 1503
 Delta R.T. 0.00 min
 Lab File: BE097007.D
 Acq: 19 Jul 2018 16:26

Instrument :
 BNA_E
 ClientSampleId :
 RE122D3-071218

Tgt Ion: 212 Resp: 60102

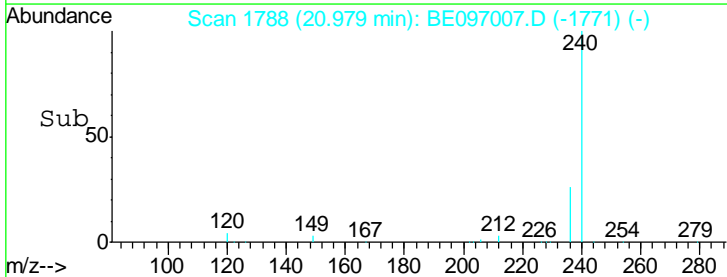
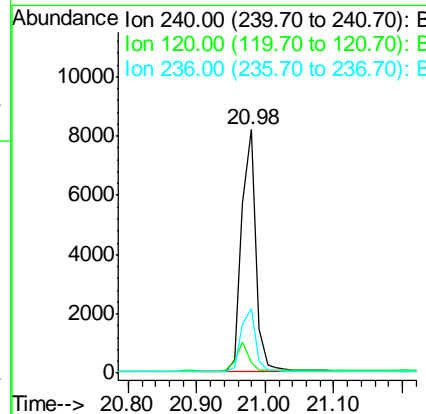
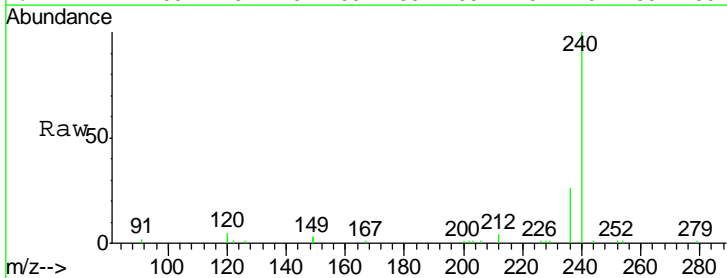
Ion	Ratio	Lower	Upper
212	100		
106	3.1	2.8	4.2
104	1.7	1.6	2.4

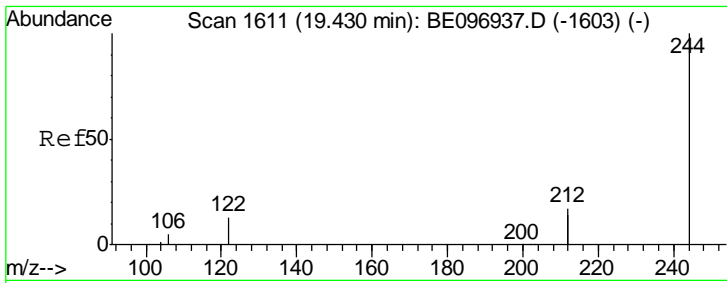


#27
 Chrysene-d12
 Concen: 0.400 ng
 RT: 20.98 min Scan# 1788
 Delta R.T. 0.00 min
 Lab File: BE097007.D
 Acq: 19 Jul 2018 16:26

Tgt Ion: 240 Resp: 11895

Ion	Ratio	Lower	Upper
240	100		
120	4.5	5.5	8.3#
236	26.3	20.7	31.1

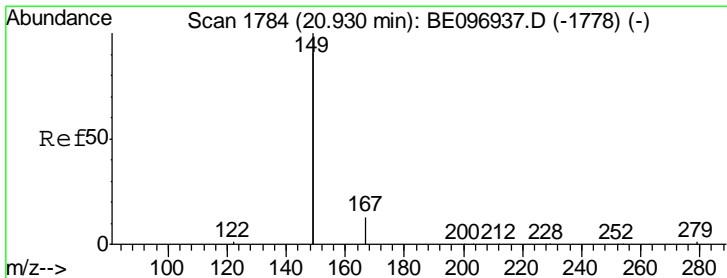
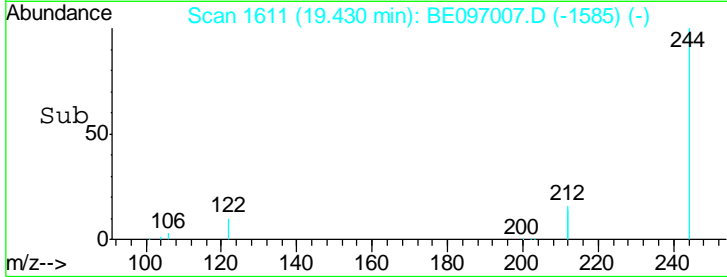
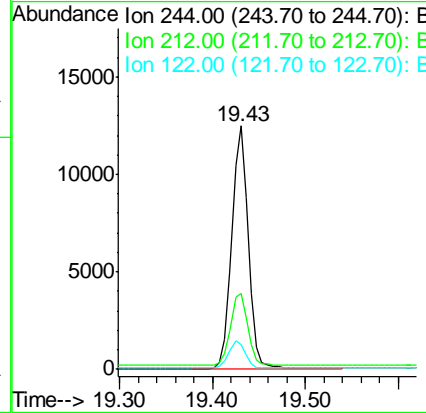
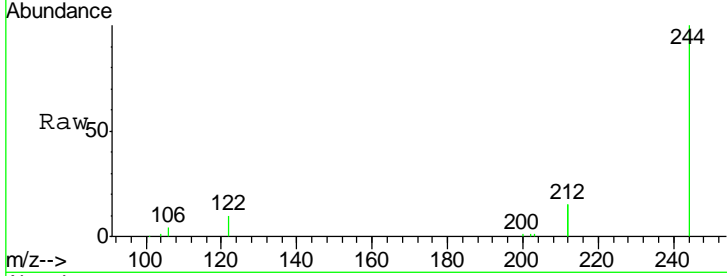




#29
 Terphenyl-d14
 Concen: 0.667 ng
 RT: 19.43 min Scan# 1611
 Delta R.T. 0.00 min
 Lab File: BE097007.D
 Acq: 19 Jul 2018 16:26

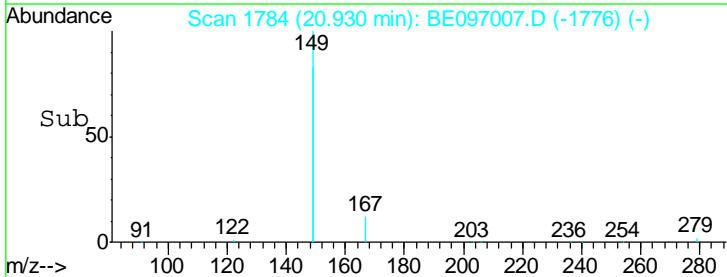
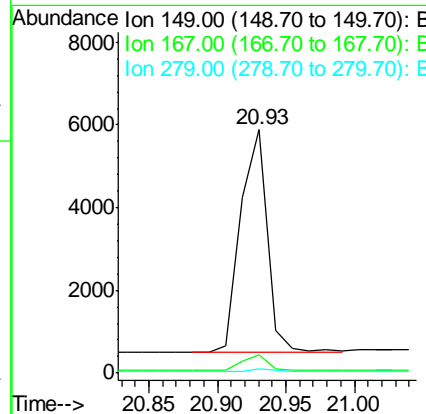
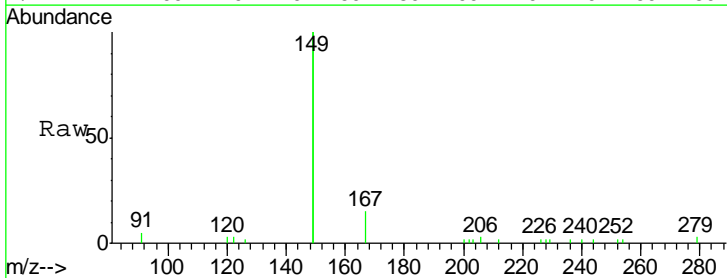
Instrument :
 BNA_E
 ClientSampleId :
 RE122D3-071218

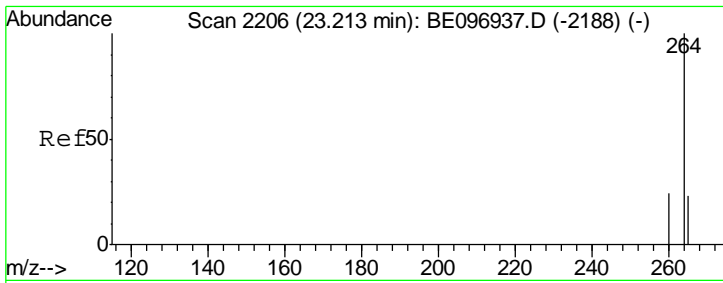
Tgt Ion	Resp	Lower	Upper
244	15306		
212	31.0	25.4	38.0
122	10.1	8.1	12.1



#32
 Bis(2-ethylhexyl)phthalate
 Concen: 0.256 ng
 RT: 20.93 min Scan# 1784
 Delta R.T. 0.00 min
 Lab File: BE097007.D
 Acq: 19 Jul 2018 16:26

Tgt Ion	Resp	Lower	Upper
149	7249		
167	6.7	5.4	8.0
279	1.2	0.7	1.1#



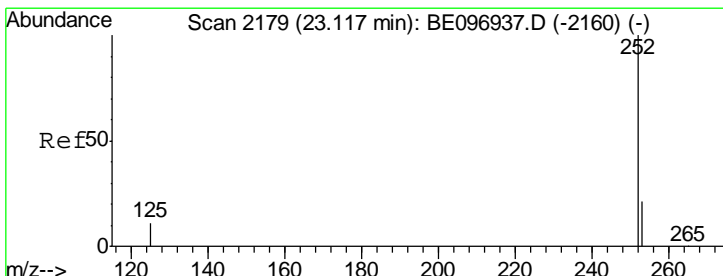
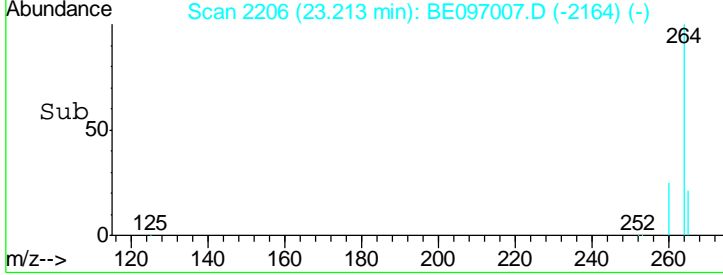
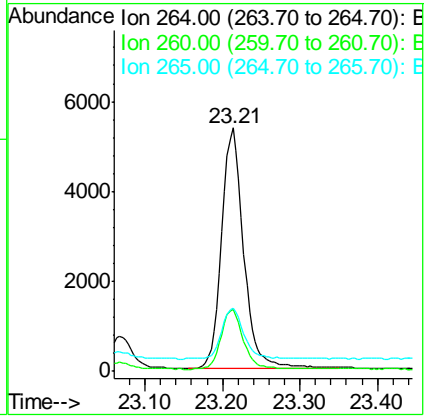
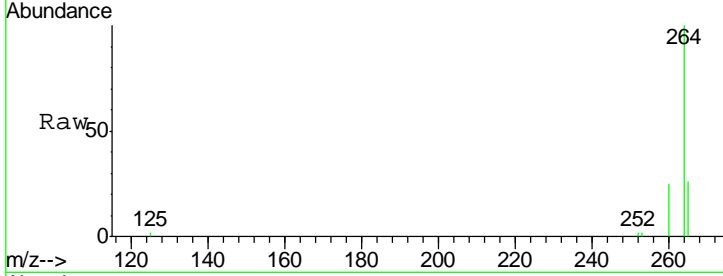


#34
 Perylene-d12
 Concen: 0.400 ng
 RT: 23.21 min Scan# 2206
 Delta R.T. 0.00 min
 Lab File: BE097007.D
 Acq: 19 Jul 2018 16:26

Instrument :
 BNA_E
 ClientSampleId :
 RE122D3-071218

Tgt Ion: 264 Resp: 10652

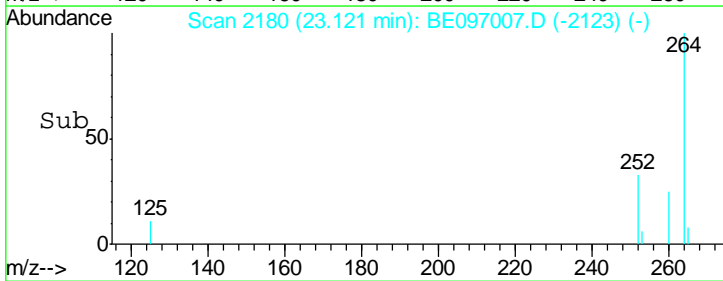
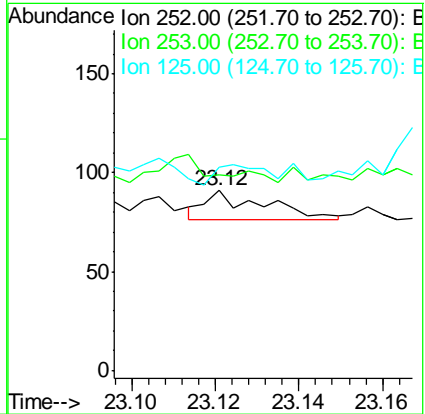
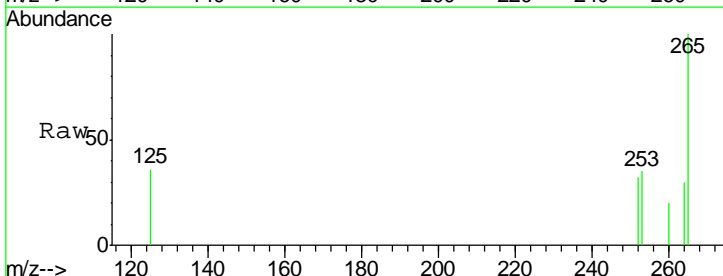
Ion	Ratio	Lower	Upper
264	100		
260	25.4	20.5	30.7
265	26.1	22.8	34.2

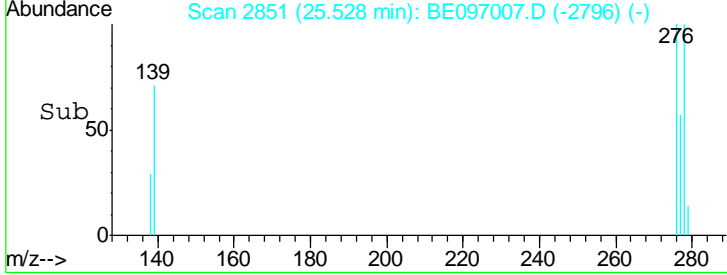
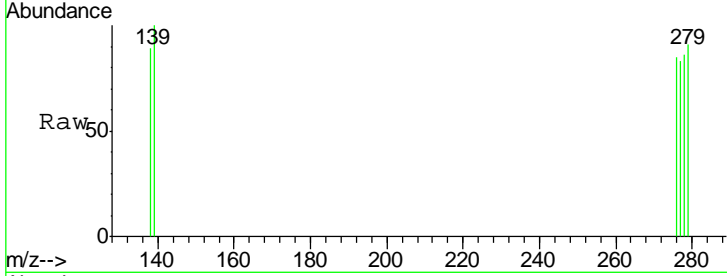
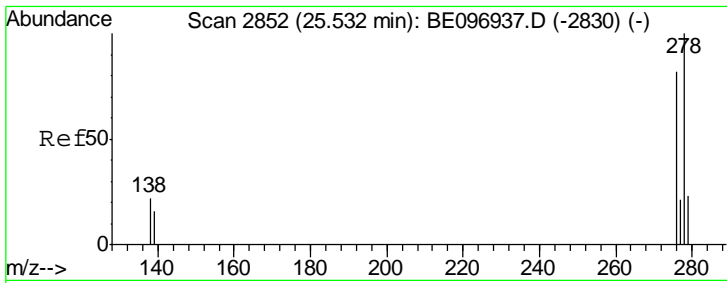


#37
 Benzo(a)pyrene
 Concen: 0.102 ng
 RT: 23.12 min Scan# 2180
 Delta R.T. 0.00 min
 Lab File: BE097007.D
 Acq: 19 Jul 2018 16:26

Tgt Ion: 252 Resp: 15

Ion	Ratio	Lower	Upper
252	100		
253	108.8	16.0	24.0#
125	113.2	12.0	18.0#





#38
 Dibenzo(a,h)anthracene
 Concen: 0.118 ng
 RT: 25.53 min Scan# 2851
 Delta R.T. -0.00 min
 Lab File: BE097007.D
 Acq: 19 Jul 2018 16:26

Instrument :
 BNA_E
 ClientSampleId :
 RE122D3-071218

Tgt Ion	Resp	Lower	Upper
278	100		
139	116.1	16.0	24.0#
279	105.4	20.0	30.0#

