

Data Path : Z:\SVOASRV\HPCHEM1\BNA E\DATA\BE071919\
 Data File : BE100467.D
 Acq On : 19 Jul 2019 12:26
 Operator : HP/JU
 Sample : SSTDICC3.2
 Misc :
 ALS Vial : 7 Sample Multiplier: 1

Instrument :
 BNA_E
 ClientSampled :
 SSTDICC3.2

Manual Integrations
 APPROVED

mohammad
 7/22/2019 10:02:11 AM

Quant Time: Jul 19 13:48:06 2019
 Quant Method : Z:\SVOASRV\HPCHEM1\BNA E\METHODS\8270-SIM-BE071919.M
 Quant Title : ASP BNA STANDARDS FOR 5 POINT CALIBRATION
 QLast Update : Fri Jul 19 13:27:51 2019
 Response via : Initial Calibration

Internal Standards	R.T.	QIon	Response	Conc	Units	Dev(Min)
1) 1,4-Dichlorobenzene-d4	7.87	152	3273	0.40	ng	0.00
7) Naphthalene-d8	10.67	136	12749	0.40	ng	0.00
13) Acenaphthene-d10	14.50	164	8216	0.40	ng	0.00
19) Phenanthrene-d10	17.21	188	20926	0.40	ng	0.00
27) Chrysene-d12	21.38	240	24610	0.40	ng	0.00
34) Perylene-d12	23.86	264	25329	0.40	ng	0.00

System Monitoring Compounds

4) 2-Fluorophenol	5.45	112	25158	4.04	ng	0.00
5) Phenol-d6	7.03	99	36082	3.92	ng	0.00
8) Nitrobenzene-d5	9.02	82	35412	5.03	ng	0.00
11) 2-Methylnaphthalene-d10	12.25	152	68691	3.56	ng	0.00
14) 2,4,6-Tribromophenol	15.97	330	12383	6.67	ng	0.00
15) 2-Fluorobiphenyl	13.13	172	103635	2.82	ng	0.00
25) Fluoranthene-d10	19.24	212	946470	3.80	ng	0.00
29) Terphenyl-d14	19.84	244	192142	3.19	ng	0.00

Target Compounds

Target Compounds	R.T.	QIon	Response	Conc	Units	Qvalue
2) 1,4-Dioxane	3.37	88	13658	2.822	ng	88
3) n-Nitrosodimethylamine	3.68	42	10525	3.711	ng	# 89
6) bis(2-Chloroethyl)ether	7.30	93	30276	3.256	ng	95
9) Naphthalene	10.72	128	388554	3.128	ng	99
10) Hexachlorobutadiene	11.02	225	18727	3.112	ng	98
12) 2-Methylnaphthalene	12.33	142	70271	3.384	ng	97
16) Acenaphthylene	14.21	152	122805	3.695	ng	100
17) Acenaphthene	14.56	154	74665	3.270	ng	98
18) Fluorene	15.53	166	98876	3.358	ng	99
20) 4-Bromophenyl-phenylether	16.42	248	33124	3.033	ng	95
21) Hexachlorobenzene	16.54	284	33346	2.613	ng	98
22) Pentachlorophenol	16.88	266	16303	7.317	ng	90
23) Phenanthrene	17.25	178	172058	3.086	ng	100
24) Anthracene	17.35	178	165742	3.602	ng	100
26) Fluoranthene	19.27	202	240553	3.395	ng	99
28) Pyrene	19.63	202	245722	3.413	ng	99
30) Benzo(a)anthracene	21.37	228	246960	3.697	ng	99
31) Chrysene	21.41	228	238529	3.007	ng	100
32) Bis(2-ethylhexyl)phthalate	21.31	149	515046	10.751	ng	100
33) Indeno(1,2,3-cd)pyrene	26.49	276	254780	3.613	ng	99
35) Benzo(b)fluoranthene	23.10	252	231899m	2.997	ng	
36) Benzo(k)fluoranthene	23.15	252	239859	2.929	ng	# 92
37) Benzo(a)pyrene	23.74	252	219897	3.456	ng	95
38) Dibenzo(a,h)anthracene	26.51	278	208583	3.074	ng	96
39) Benzo(g,h,i)perylene	27.29	276	209133	2.947	ng	98

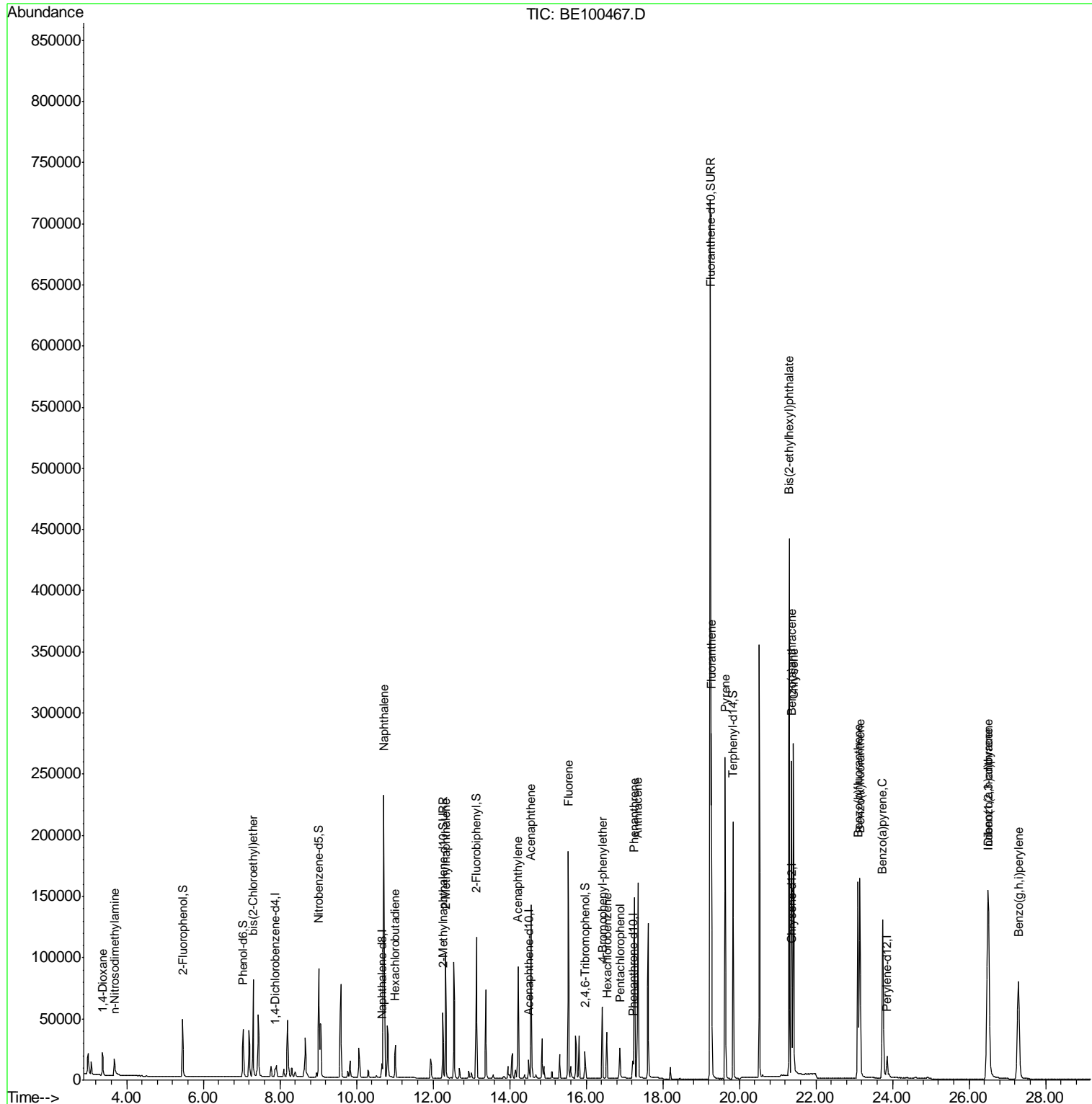
(#) = qualifier out of range (m) = manual integration (+) = signals summed

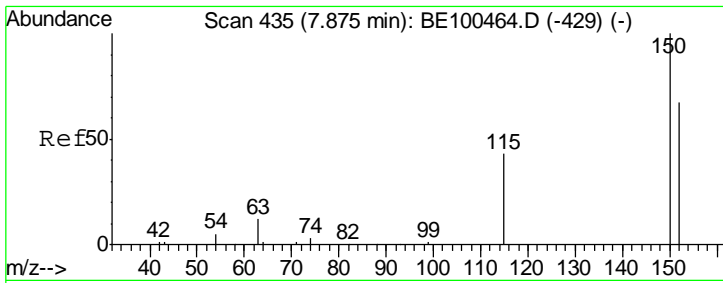
Data Path : Z:\SVOASRV\HPCHEM1\BNA E\DATA\BE071919\
 Data File : BE100467.D
 Acq On : 19 Jul 2019 12:26
 Operator : HP/JU
 Sample : SSTDICC3.2
 Misc :
 ALS Vial : 7 Sample Multiplier: 1

Instrument :
 BNA_E
 Client Sampled :
 SSTDICC3.2

Manual Integrations
 APPROVED
 mohammad
 7/22/2019 10:02:11 AM

Quant Time: Jul 19 13:48:06 2019
 Quant Method : Z:\SVOASRV\HPCHEM1\BNA E\METHODS\8270-SIM-BE071919.M
 Quant Title : ASP BNA STANDARDS FOR 5 POINT CALIBRATION
 QLast Update : Fri Jul 19 13:27:51 2019
 Response via : Initial Calibration





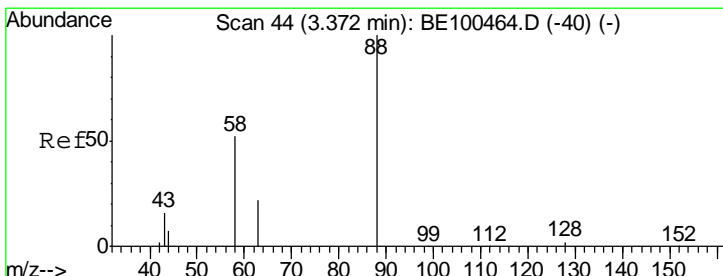
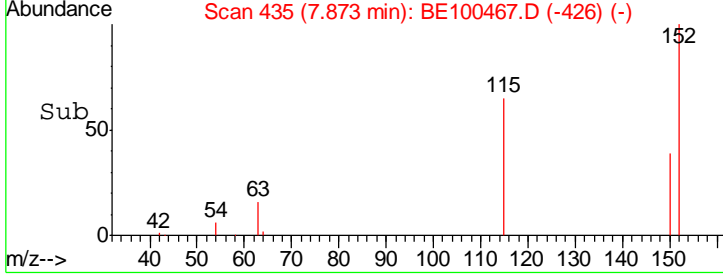
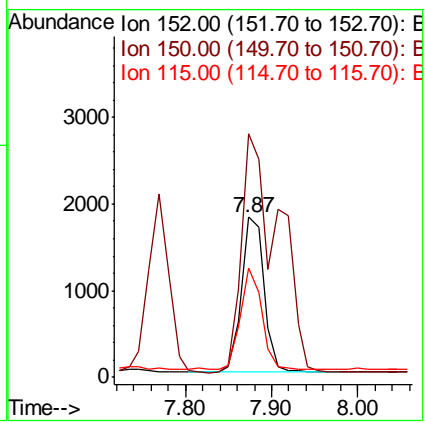
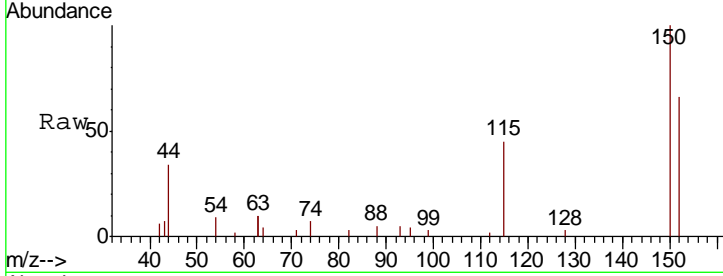
#1
 1,4-Dichlorobenzene-d4
 Concen: 0.400 ng
 RT: 7.87 min Scan# 435
 Delta R.T. -0.00 min
 Lab File: BE100467.D
 Acq: 19 Jul 2019 12:26

Instrument :
 BNA_E
ClientSampled :
 SSTDICC3.2

Tgt Ion: 152 Resp: 3273

Ion	Ratio	Lower	Upper
152	100		
150	152.2	117.6	176.4
115	68.6	54.9	82.3

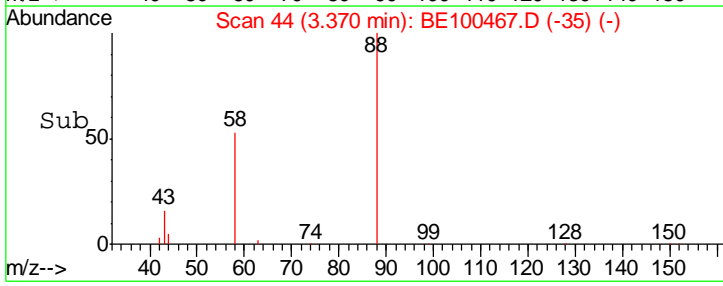
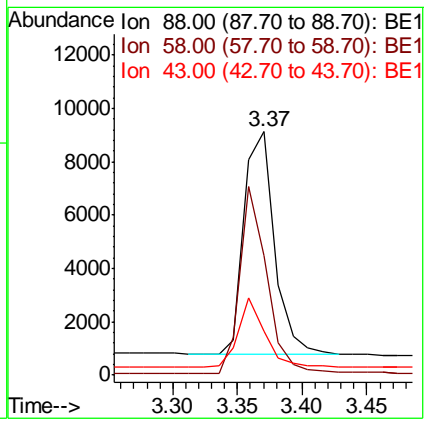
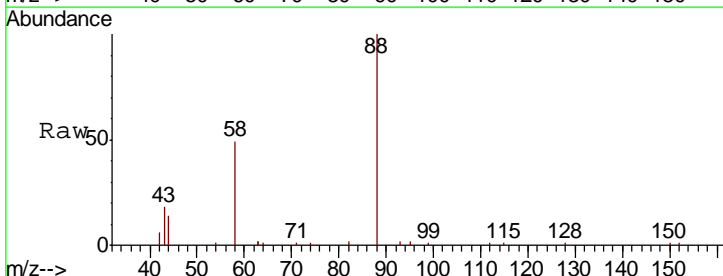
Manual Integrations
APPROVED
 mohammad
 7/22/2019 10:02:11 AM

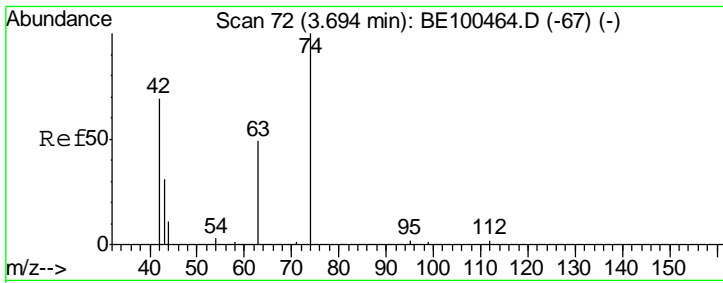


#2
 1,4-Dioxane
 Concen: 2.822 ng
 RT: 3.37 min Scan# 44
 Delta R.T. -0.00 min
 Lab File: BE100467.D
 Acq: 19 Jul 2019 12:26

Tgt Ion: 88 Resp: 13658

Ion	Ratio	Lower	Upper
88	100		
58	74.0	50.2	75.4
43	27.2	19.1	28.7



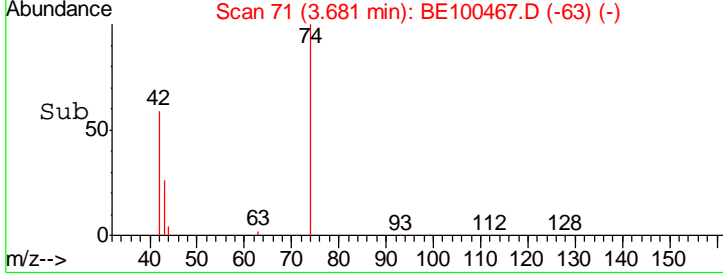
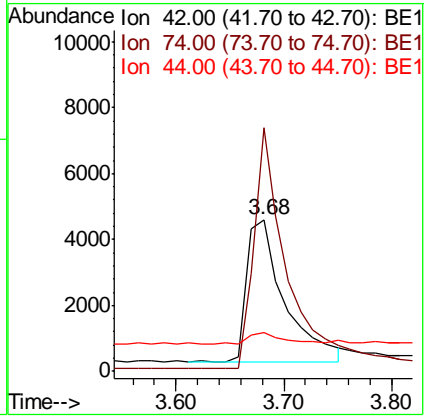
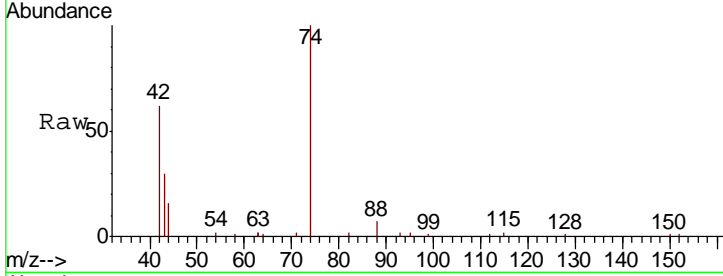


#3
 n-Nitrosodimethylamine
 Concen: 3.711 ng
 RT: 3.68 min Scan# 71
 Delta R.T. -0.01 min
 Lab File: BE100467.D
 Acq: 19 Jul 2019 12:26

Instrument :
 BNA_E
ClientSampled :
 SSTDICC3.2

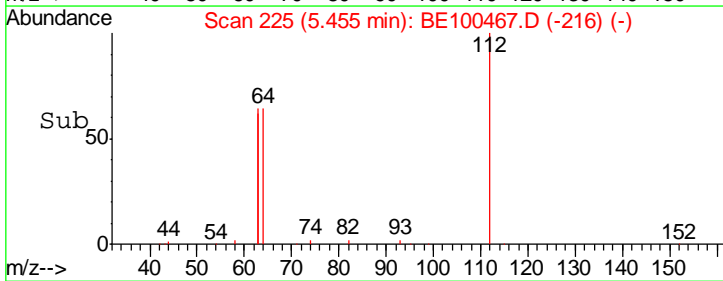
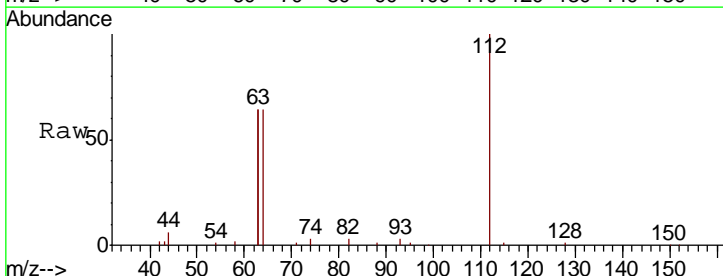
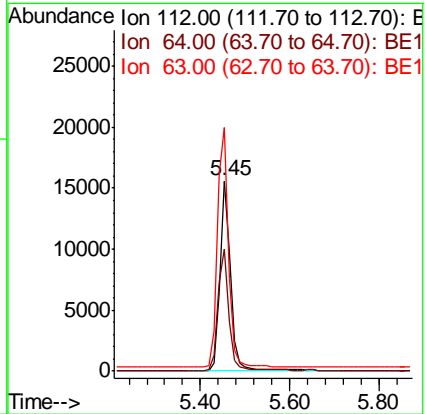
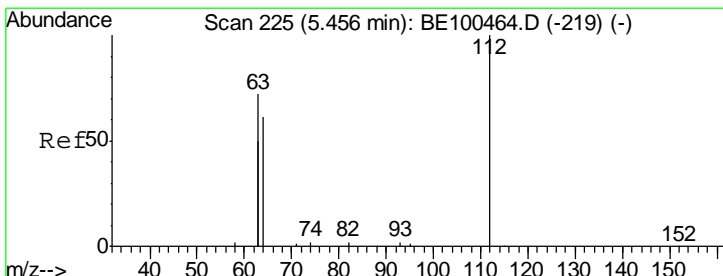
Tgt Ion	Resp	Lower	Upper
42	10525		
42	100		
74	144.9	105.8	158.8
44	8.1	0.0	0.0#

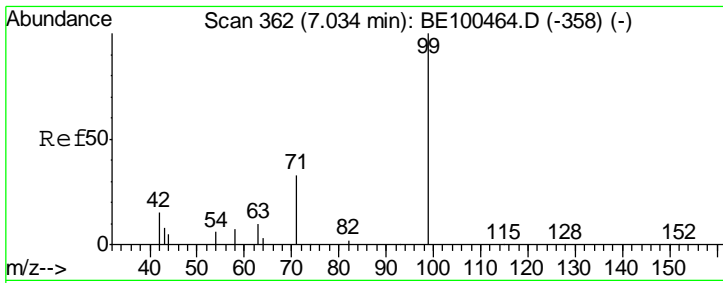
Manual Integrations
APPROVED
 mohammad
 7/22/2019 10:02:11 AM



#4
 2-Fluorophenol
 Concen: 4.040 ng
 RT: 5.45 min Scan# 225
 Delta R.T. -0.00 min
 Lab File: BE100467.D
 Acq: 19 Jul 2019 12:26

Tgt Ion	Resp	Lower	Upper
112	25158		
112	100		
64	66.7	51.9	77.9
63	134.2	103.9	155.9





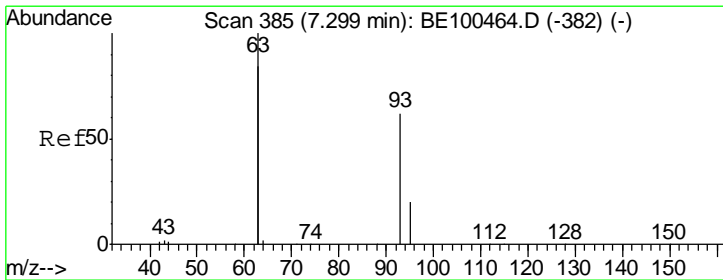
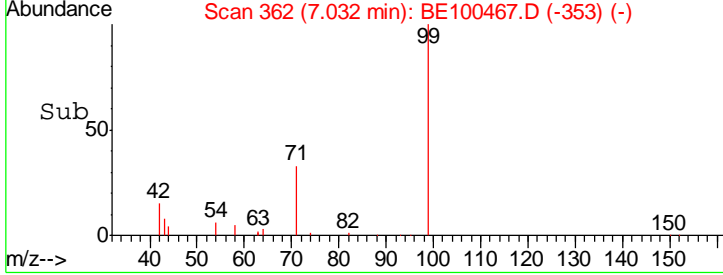
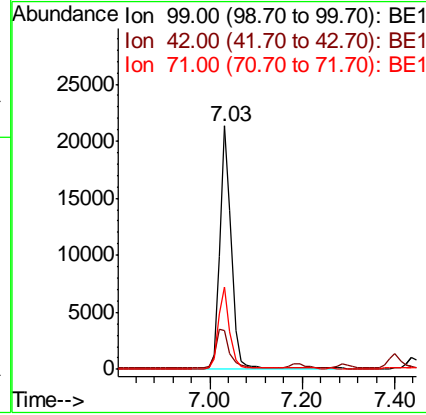
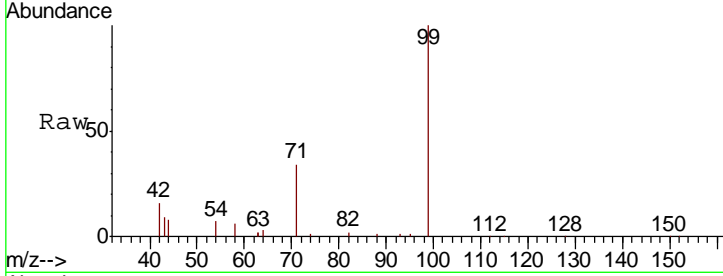
#5
 Phenol-d6
 Concen: 3.921 ng
 RT: 7.03 min Scan# 362
 Delta R.T. -0.00 min
 Lab File: BE100467.D
 Acq: 19 Jul 2019 12:26

Instrument :
 BNA_E
ClientSampled :
 SSTDICC3.2

Tgt Ion	Resp	Lower	Upper
99	36082		
99	100		
42	18.5	16.2	24.4
71	33.4	26.0	39.0

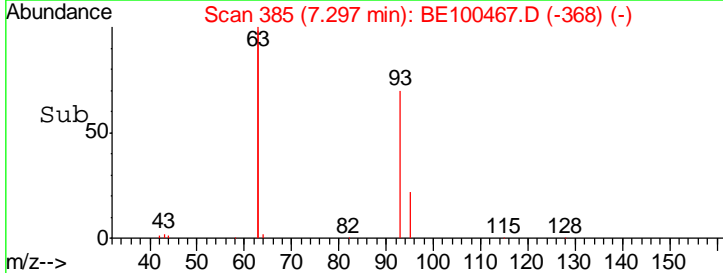
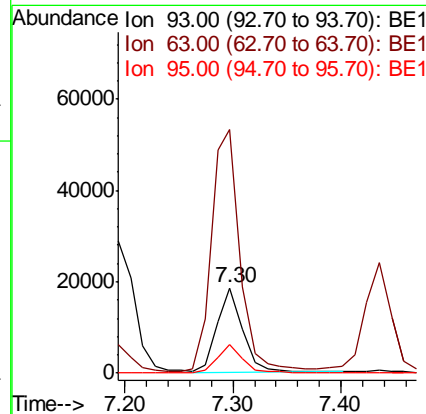
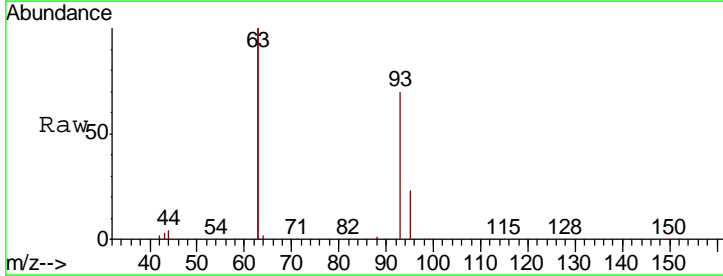
Manual Integrations
APPROVED

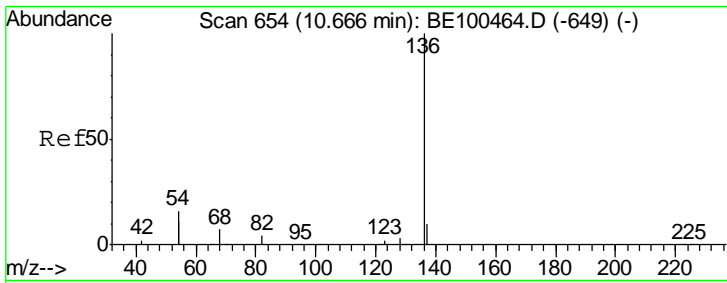
mohammad
 7/22/2019 10:02:11 AM



#6
 bis(2-Chloroethyl)ether
 Concen: 3.256 ng
 RT: 7.30 min Scan# 385
 Delta R.T. -0.00 min
 Lab File: BE100467.D
 Acq: 19 Jul 2019 12:26

Tgt Ion	Resp	Lower	Upper
93	30276		
93	100		
63	320.2	248.4	372.6
95	32.6	24.7	37.1





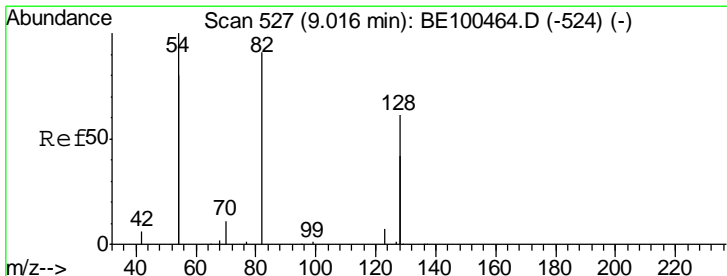
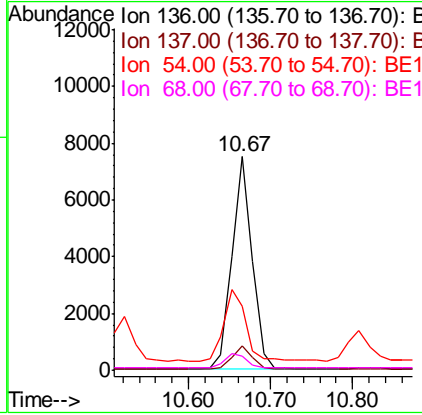
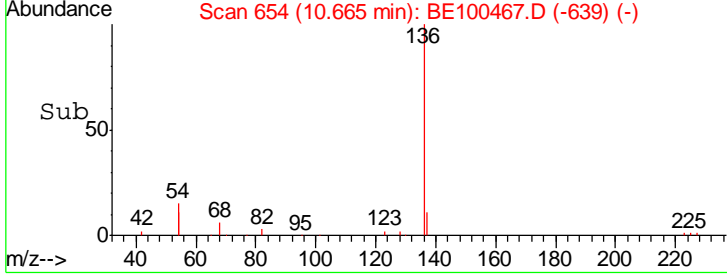
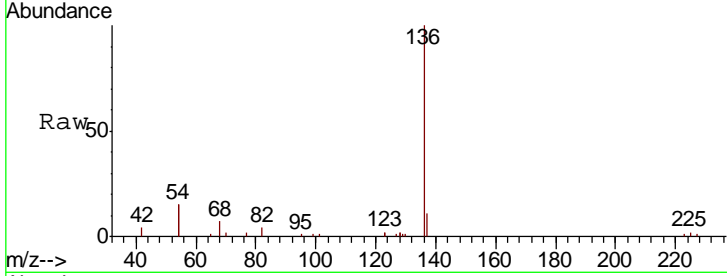
#7
 Naphthalene-d8
 Concen: 0.400 ng
 RT: 10.67 min Scan# 654
 Delta R.T. -0.00 min
 Lab File: BE100467.D
 Acq: 19 Jul 2019 12:26

Instrument :
 BNA_E
ClientSampled :
 SSTDICC3.2

Tgt Ion	Resp	Lower	Upper
136	12749		
137	11.3	9.0	13.6
54	29.9	26.2	39.2
68	6.8	6.5	9.7

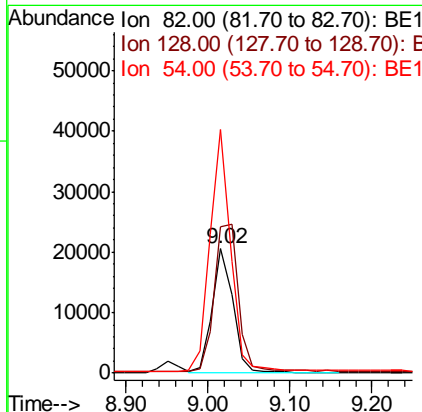
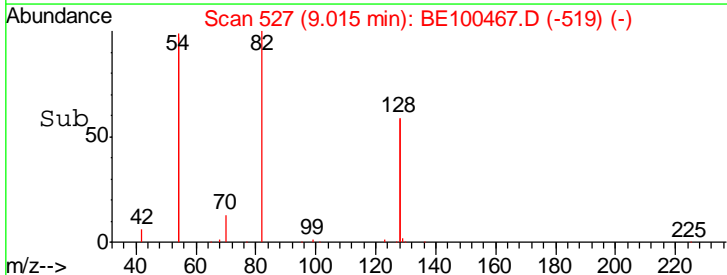
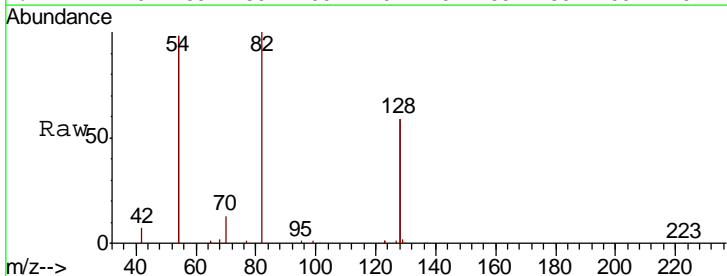
Manual Integrations
APPROVED

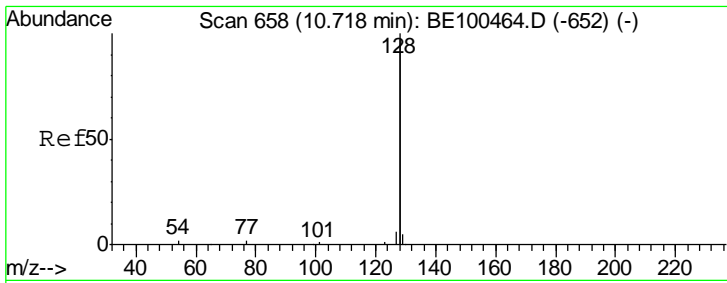
mohammad
 7/22/2019 10:02:11 AM



#8
 Nitrobenzene-d5
 Concen: 5.032 ng
 RT: 9.02 min Scan# 527
 Delta R.T. -0.00 min
 Lab File: BE100467.D
 Acq: 19 Jul 2019 12:26

Tgt Ion	Resp	Lower	Upper
82	35412		
128	118.3	100.7	151.1
54	196.0	164.4	246.6





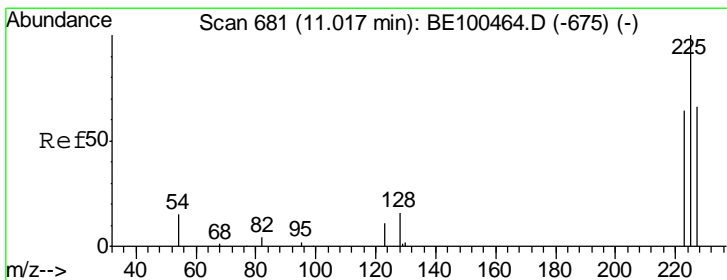
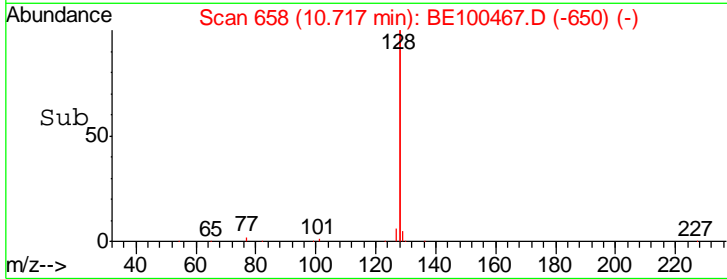
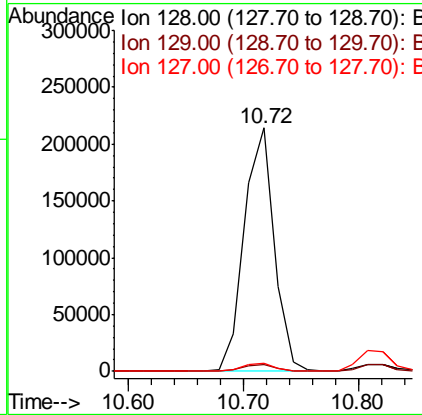
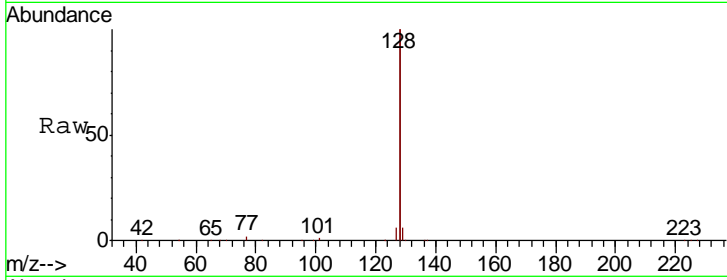
#9
 Naphthalene
 Concen: 3.128 ng
 RT: 10.72 min Scan# 658
 Delta R.T. -0.00 min
 Lab File: BE100467.D
 Acq: 19 Jul 2019 12:26

Instrument :
 BNA_E
ClientSampled :
 SSTDICC3.2

Tgt Ion	Resp	Lower	Upper
128	388554		
129	2.8	2.4	3.6
127	3.2	2.6	4.0

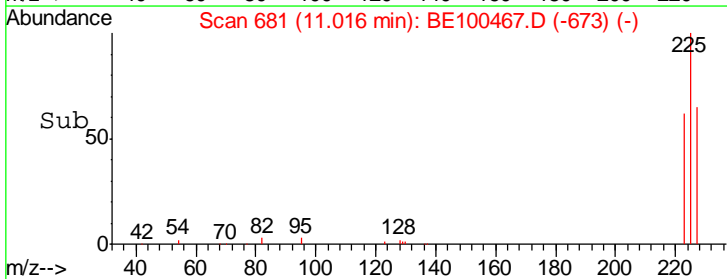
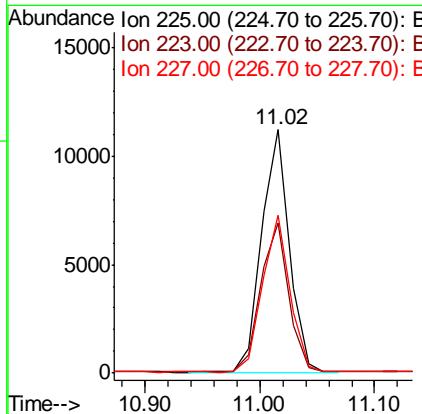
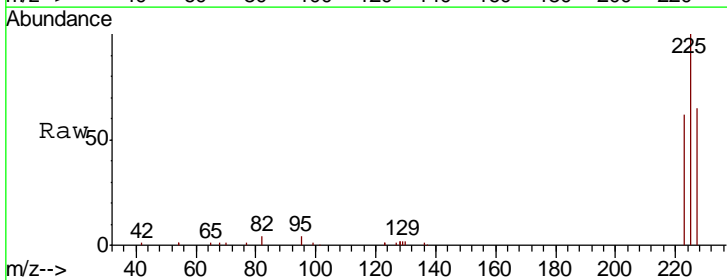
Manual Integrations
APPROVED

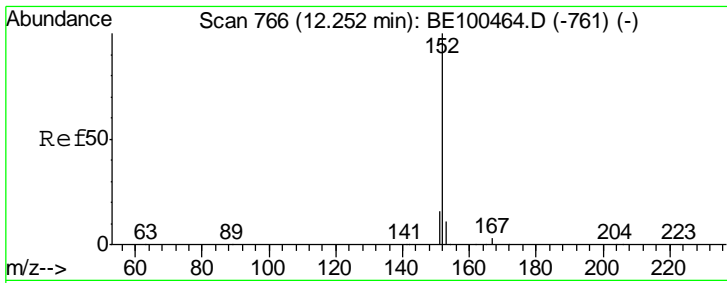
mohammad
 7/22/2019 10:02:11 AM



#10
 Hexachlorobutadiene
 Concen: 3.112 ng
 RT: 11.02 min Scan# 681
 Delta R.T. -0.00 min
 Lab File: BE100467.D
 Acq: 19 Jul 2019 12:26

Tgt Ion	Resp	Lower	Upper
225	18727		
223	62.3	51.7	77.5
227	63.8	50.9	76.3





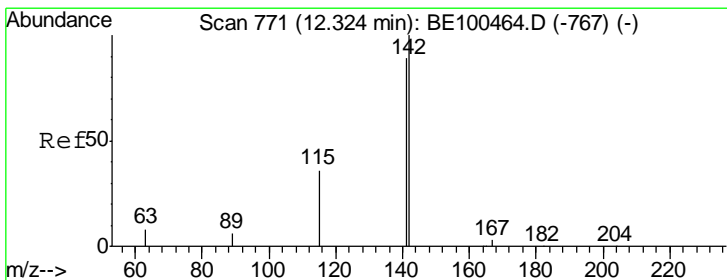
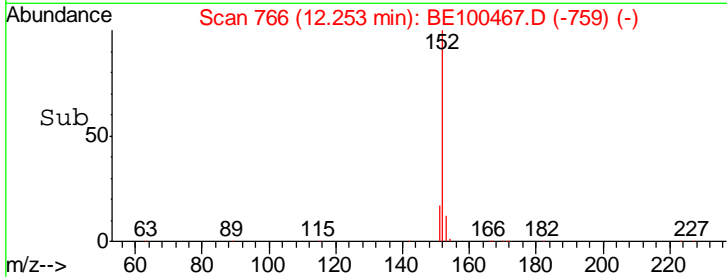
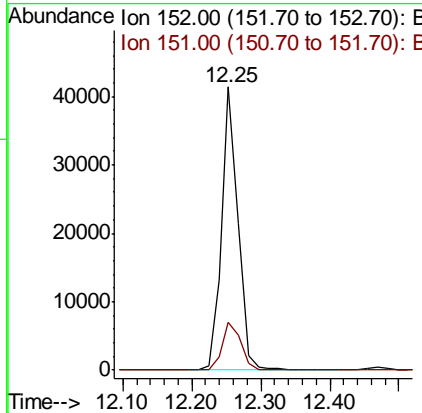
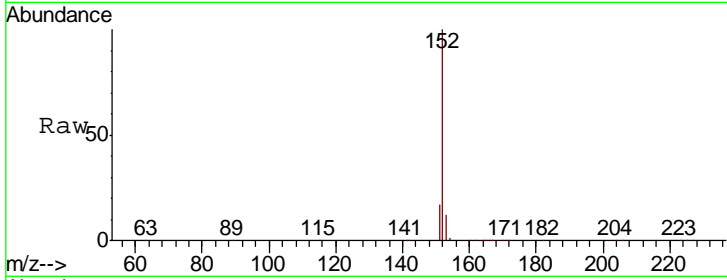
#11
 2-Methylnaphthalene-d10
 Concen: 3.561 ng
 RT: 12.25 min Scan# 766
 Delta R.T. 0.00 min
 Lab File: BE100467.D
 Acq: 19 Jul 2019 12:26

Instrument :
 BNA_E
ClientSampled :
 SSTDICC3.2

Tgt Ion	Resp	Lower	Upper
152	100		
151	19.1	15.8	23.6

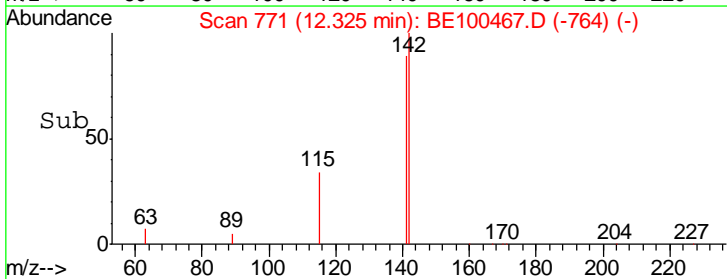
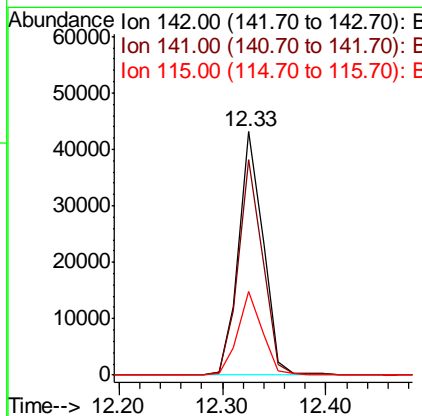
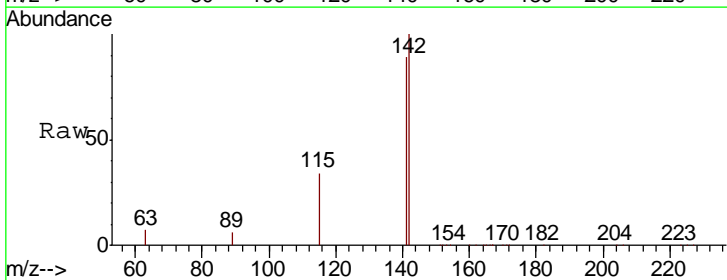
Manual Integrations
APPROVED

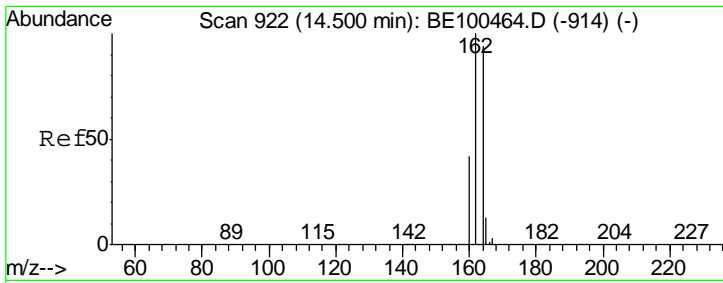
mohammad
 7/22/2019 10:02:11 AM



#12
 2-Methylnaphthalene
 Concen: 3.384 ng
 RT: 12.33 min Scan# 771
 Delta R.T. 0.00 min
 Lab File: BE100467.D
 Acq: 19 Jul 2019 12:26

Tgt Ion	Resp	Lower	Upper
142	100		
141	88.6	71.7	107.5
115	34.2	30.4	45.6





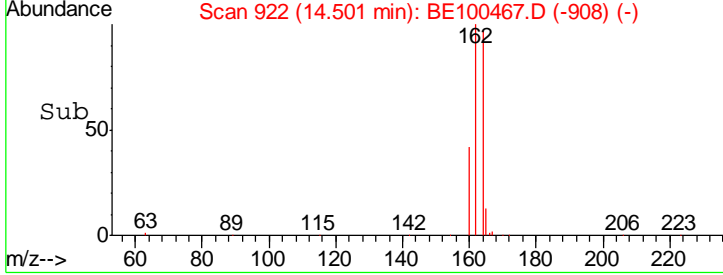
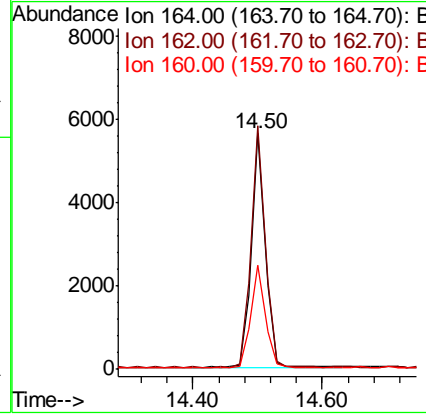
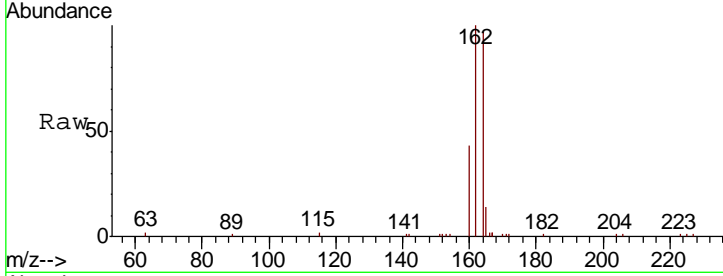
#13
 Acenaphthene-d10
 Concen: 0.400 ng
 RT: 14.50 min Scan# 922
 Delta R.T. 0.00 min
 Lab File: BE100467.D
 Acq: 19 Jul 2019 12:26

Instrument :
 BNA_E
ClientSampled :
 SSTDICC3.2

Tgt Ion	Resp	Lower	Upper
164	100		
162	103.2	85.0	127.6
160	44.1	36.2	54.2

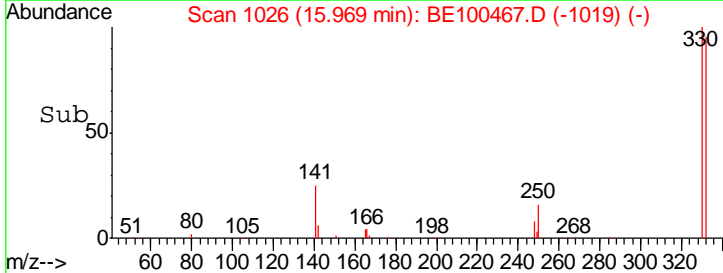
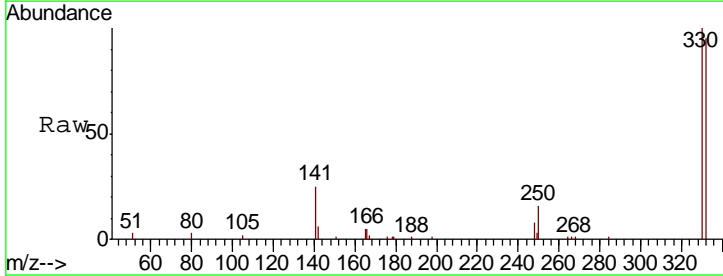
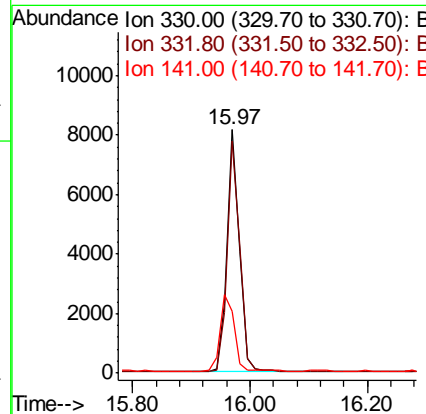
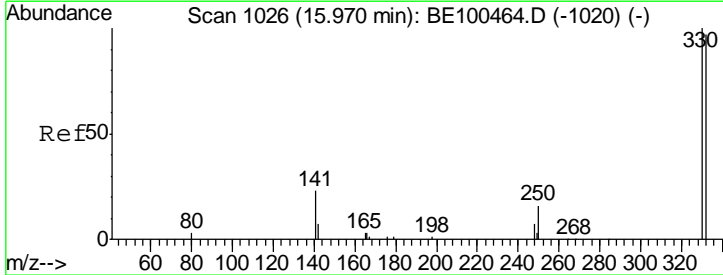
Manual Integrations
APPROVED

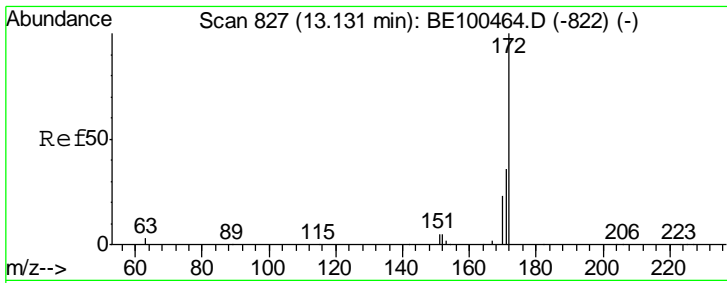
mohammad
 7/22/2019 10:02:11 AM



#14
 2,4,6-Tribromophenol
 Concen: 6.671 ng
 RT: 15.97 min Scan# 1026
 Delta R.T. -0.00 min
 Lab File: BE100467.D
 Acq: 19 Jul 2019 12:26

Tgt Ion	Resp	Lower	Upper
330	100		
332	96.6	76.3	114.5
141	35.5	29.4	44.2





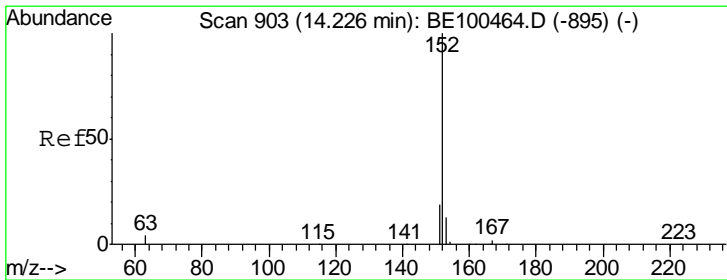
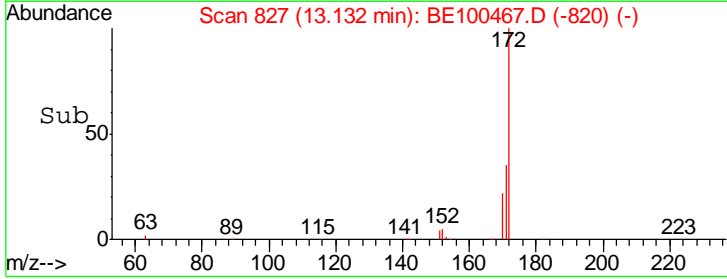
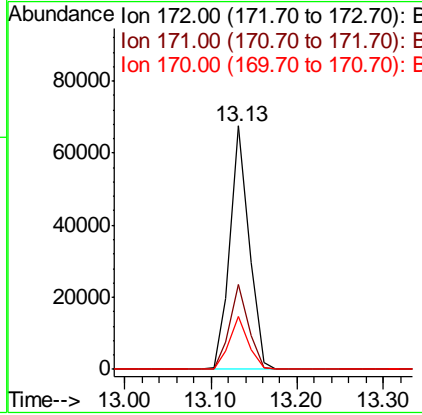
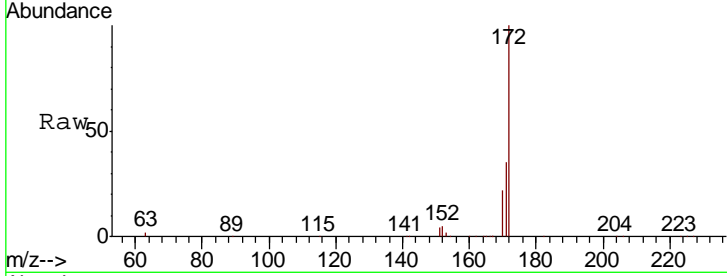
#15
 2-Fluorobiphenyl
 Concen: 2.816 ng
 RT: 13.13 min Scan# 827
 Delta R.T. 0.00 min
 Lab File: BE100467.D
 Acq: 19 Jul 2019 12:26

Instrument :
 BNA_E
ClientSampled :
 SSTDICC3.2

Tgt Ion	Resp	Lower	Upper
172	103635		
171	34.8	29.2	43.8
170	22.0	18.8	28.2

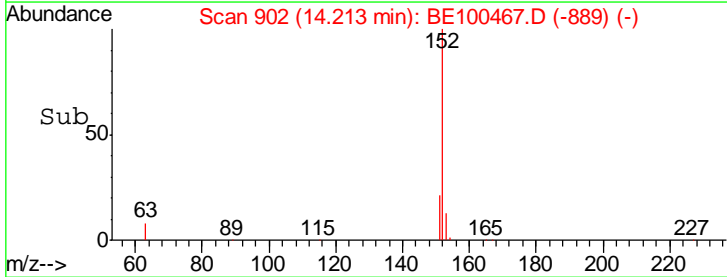
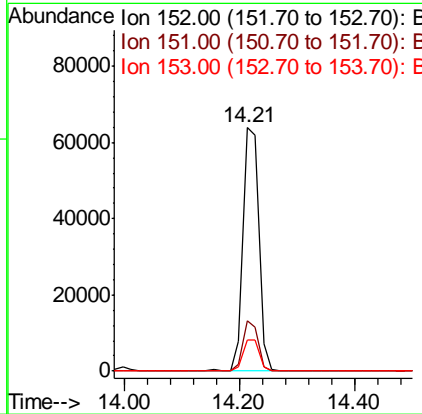
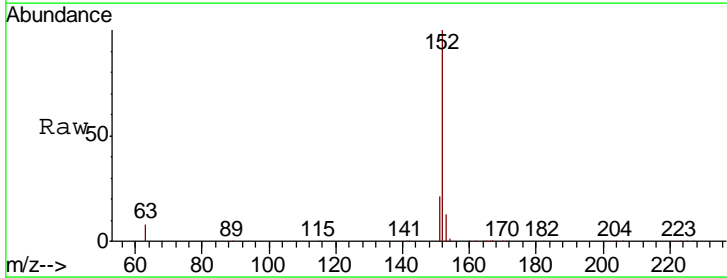
Manual Integrations
APPROVED

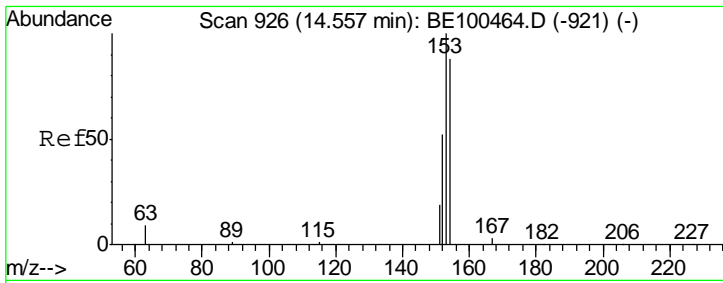
mohammad
 7/22/2019 10:02:11 AM



#16
 Acenaphthylene
 Concen: 3.695 ng
 RT: 14.21 min Scan# 902
 Delta R.T. -0.01 min
 Lab File: BE100467.D
 Acq: 19 Jul 2019 12:26

Tgt Ion	Resp	Lower	Upper
152	122805		
151	19.6	15.5	23.3
153	13.0	10.6	15.8





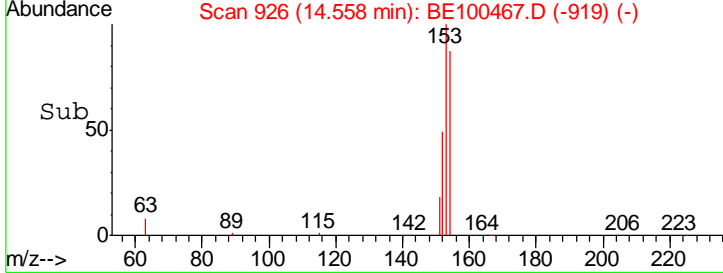
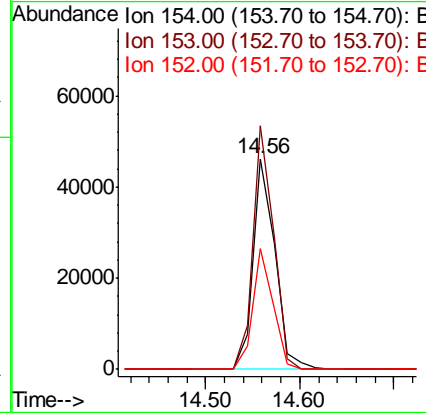
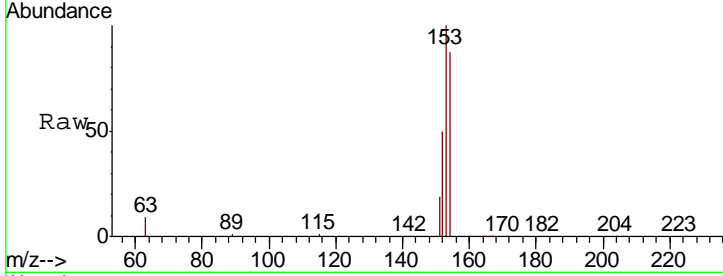
#17
 Acenaphthene
 Concen: 3.270 ng
 RT: 14.56 min Scan# 926
 Delta R.T. 0.00 min
 Lab File: BE100467.D
 Acq: 19 Jul 2019 12:26

Instrument :
 BNA_E
ClientSampled :
 SSTDICC3.2

Tgt Ion	Resp	Lower	Upper
154	100		
153	109.6	89.4	134.2
152	53.3	44.4	66.6

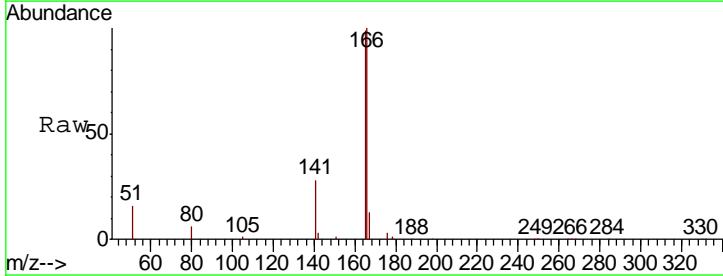
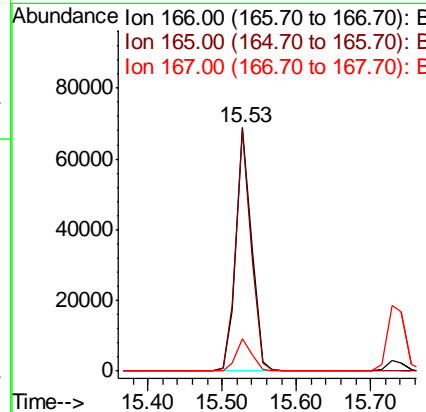
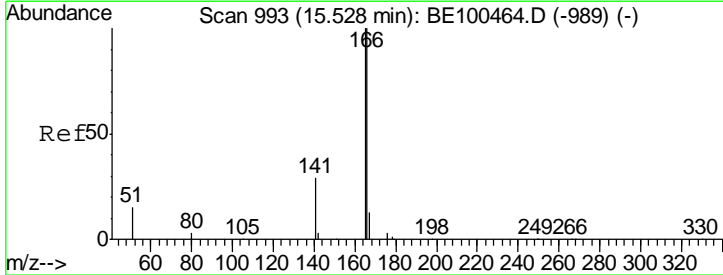
Manual Integrations
APPROVED

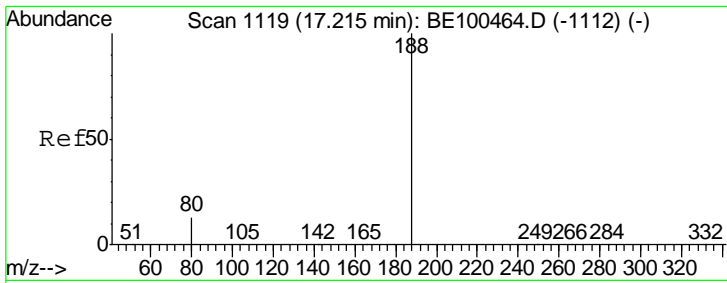
mohammad
 7/22/2019 10:02:11 AM



#18
 Fluorene
 Concen: 3.358 ng
 RT: 15.53 min Scan# 993
 Delta R.T. -0.00 min
 Lab File: BE100467.D
 Acq: 19 Jul 2019 12:26

Tgt Ion	Resp	Lower	Upper
166	100		
165	98.3	79.8	119.8
167	13.3	10.4	15.6





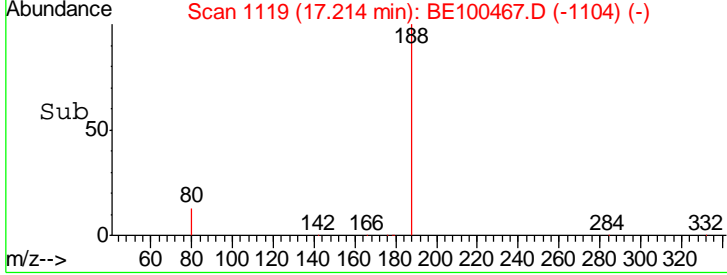
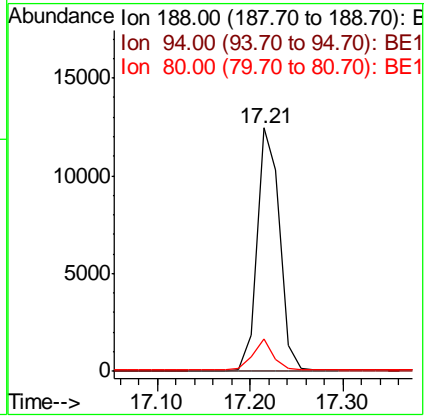
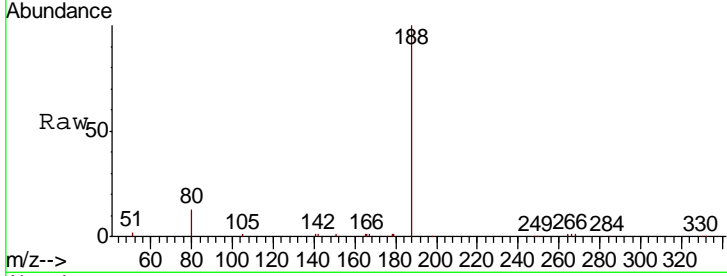
#19
 Phenanthrene-d10
 Concen: 0.400 ng
 RT: 17.21 min Scan# 1119
 Delta R.T. -0.00 min
 Lab File: BE100467.D
 Acq: 19 Jul 2019 12:26

Instrument :
 BNA_E
 ClientSampled :
 SSTDICC3.2

Tgt Ion	Resp	Lower	Upper
188	100		
94	0.0	0.0	0.0
80	13.4	10.7	16.1

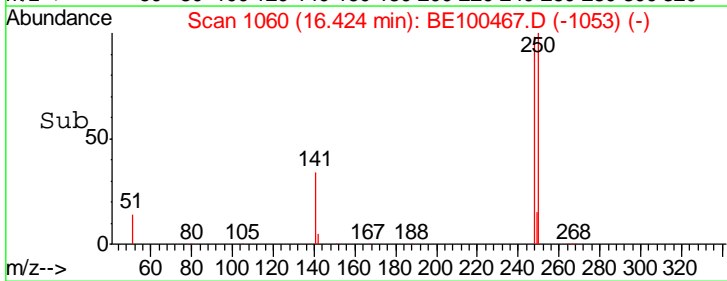
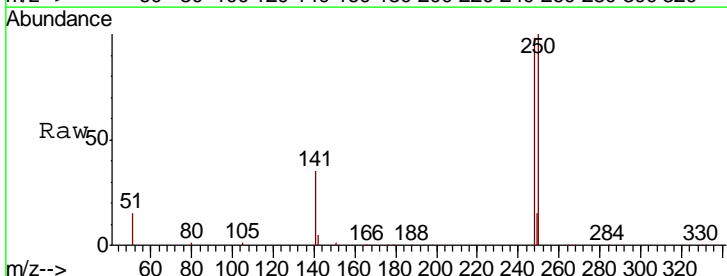
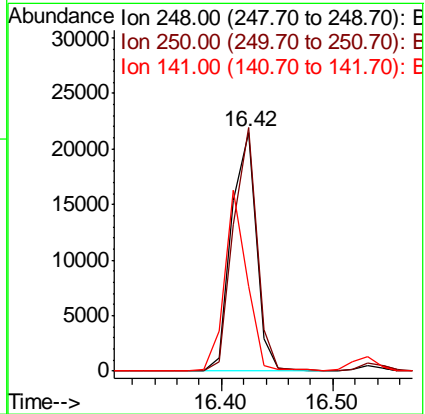
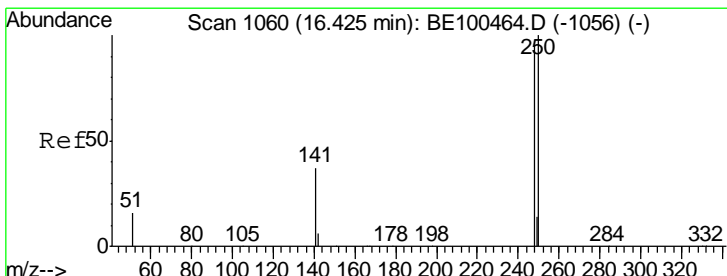
Manual Integrations
 APPROVED

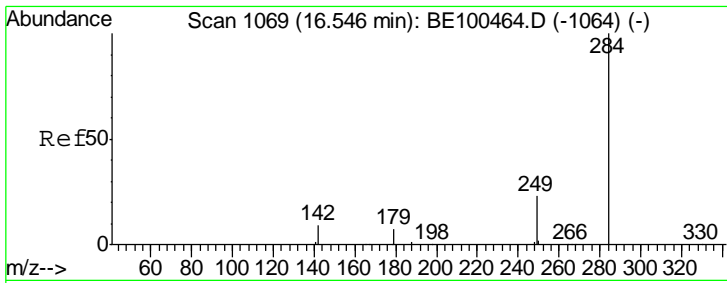
mohammad
 7/22/2019 10:02:11 AM



#20
 4-Bromophenyl-phenylether
 Concen: 3.033 ng
 RT: 16.42 min Scan# 1060
 Delta R.T. -0.00 min
 Lab File: BE100467.D
 Acq: 19 Jul 2019 12:26

Tgt Ion	Resp	Lower	Upper
248	100		
250	102.1	83.9	125.9
141	35.4	33.7	50.5



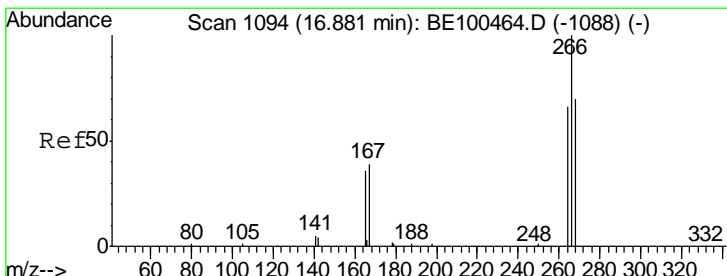
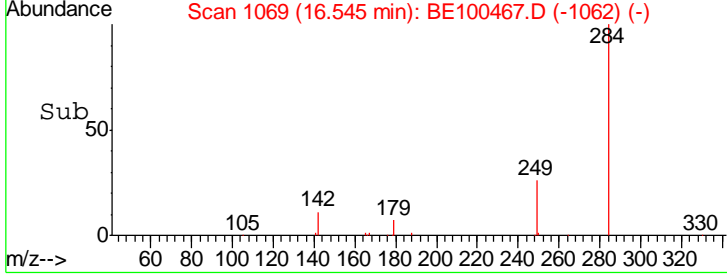
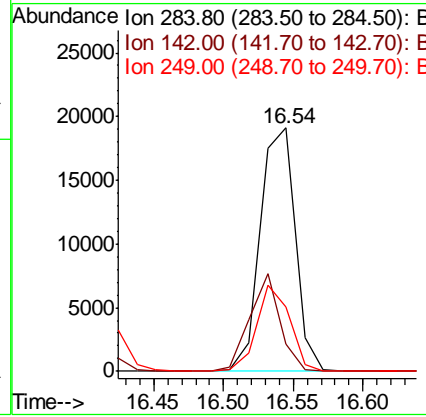
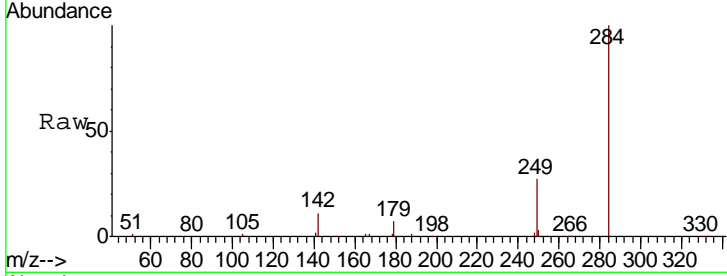


#21
 Hexachlorobenzene
 Concen: 2.613 ng
 RT: 16.54 min Scan# 1069
 Delta R.T. -0.00 min
 Lab File: BE100467.D
 Acq: 19 Jul 2019 12:26

Instrument :
 BNA_E
 ClientSampled :
 SSTDICC3.2

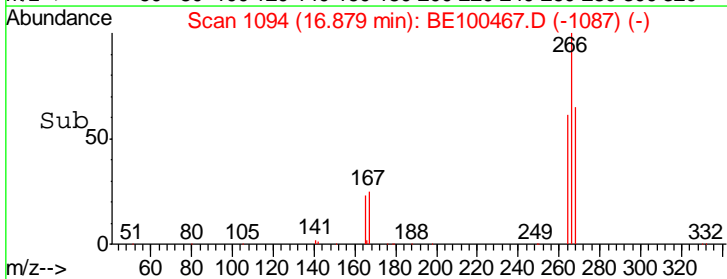
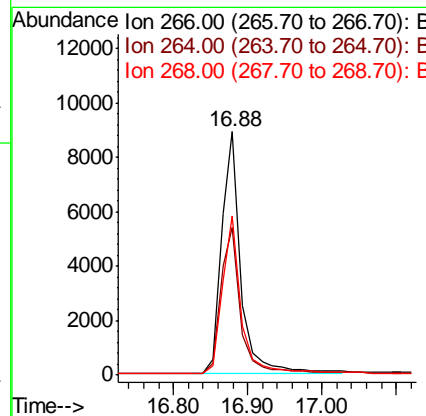
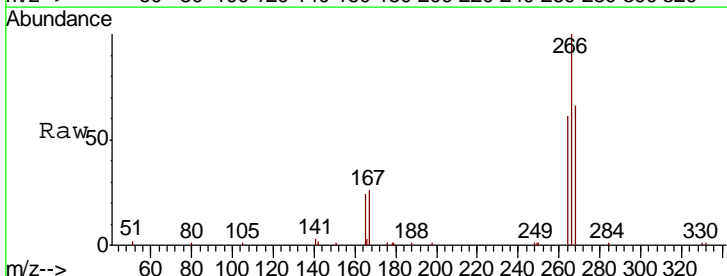
Tgt Ion	Resp	Lower	Upper
284	33346		
284	100		
142	33.8	27.4	41.2
249	32.7	25.1	37.7

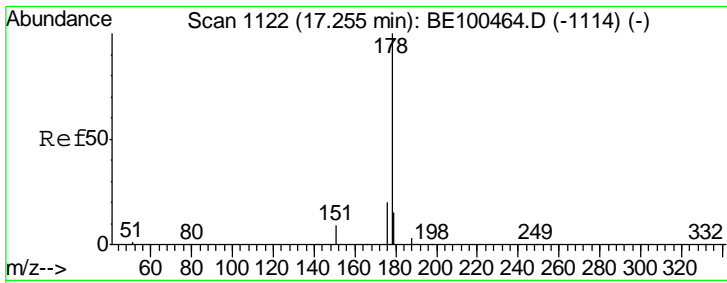
Manual Integrations
APPROVED
 mohammad
 7/22/2019 10:02:11 AM



#22
 Pentachlorophenol
 Concen: 7.317 ng
 RT: 16.88 min Scan# 1094
 Delta R.T. -0.00 min
 Lab File: BE100467.D
 Acq: 19 Jul 2019 12:26

Tgt Ion	Resp	Lower	Upper
266	16303		
266	100		
264	60.8	55.5	83.3
268	65.5	59.2	88.8





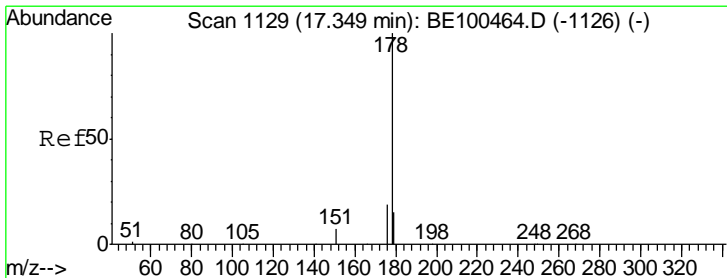
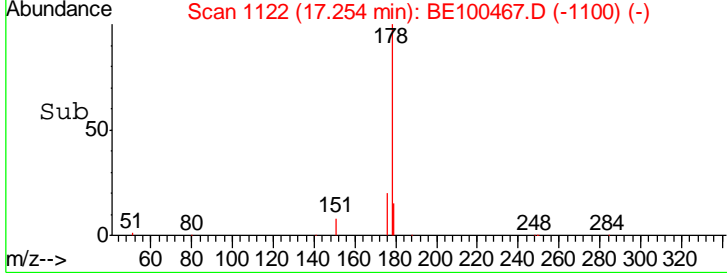
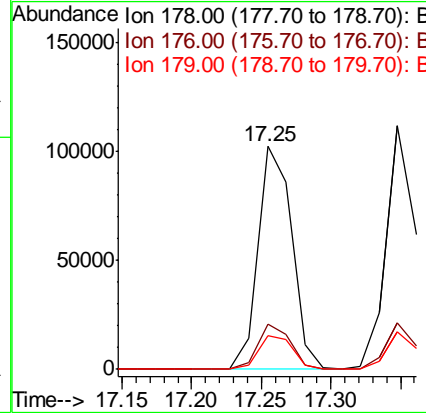
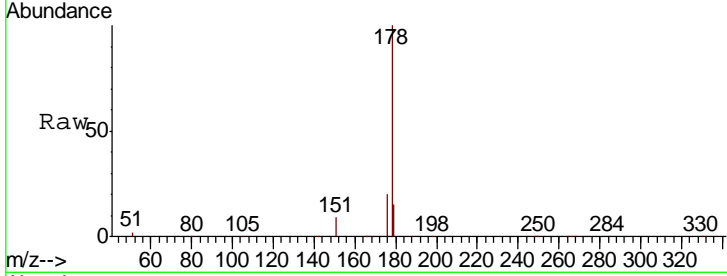
#23
 Phenanthrene
 Concen: 3.086 ng
 RT: 17.25 min Scan# 1122
 Delta R.T. -0.00 min
 Lab File: BE100467.D
 Acq: 19 Jul 2019 12:26

Instrument :
 BNA_E
 ClientSampled :
 SSTDICC3.2

Tgt Ion	Resp	Lower	Upper
178	172058		
176	19.3	15.5	23.3
179	15.3	12.5	18.7

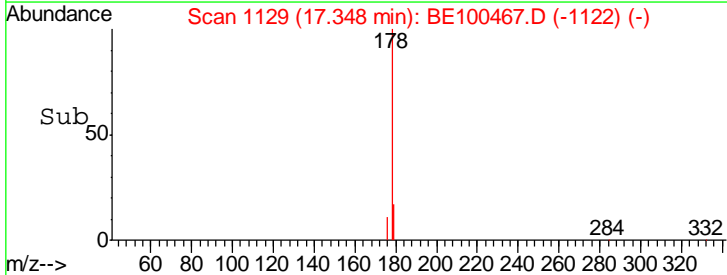
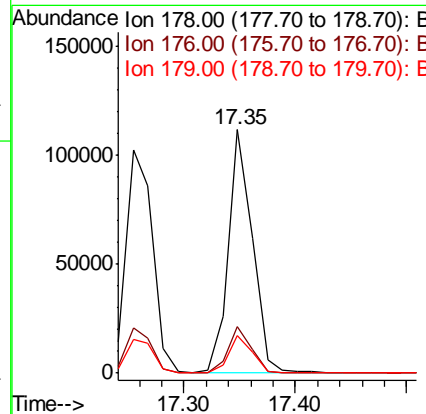
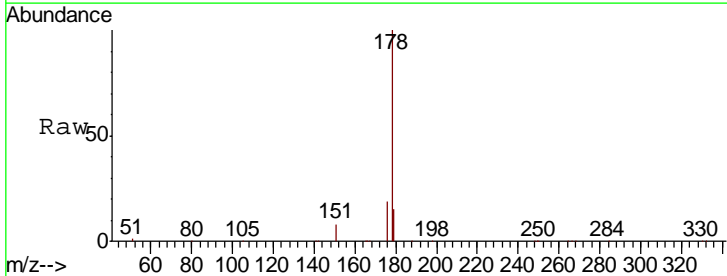
Manual Integrations
 APPROVED

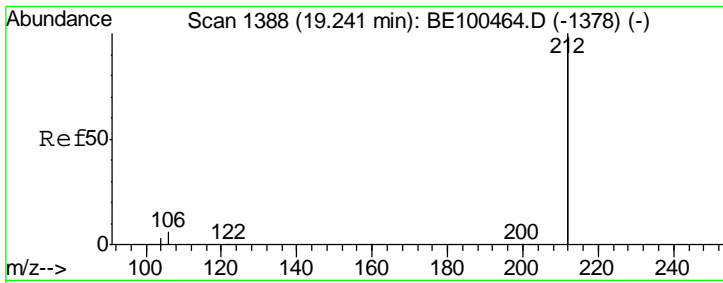
mohammad
 7/22/2019 10:02:11 AM



#24
 Anthracene
 Concen: 3.602 ng
 RT: 17.35 min Scan# 1129
 Delta R.T. -0.00 min
 Lab File: BE100467.D
 Acq: 19 Jul 2019 12:26

Tgt Ion	Resp	Lower	Upper
178	165742		
176	18.8	15.0	22.6
179	15.2	12.2	18.2





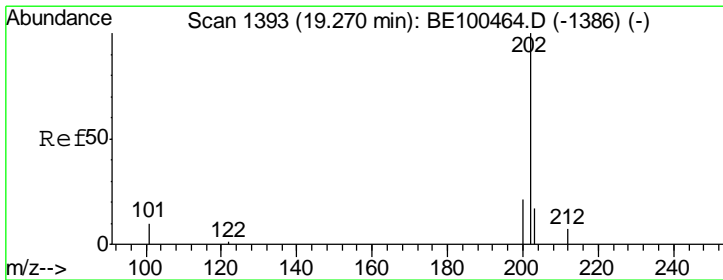
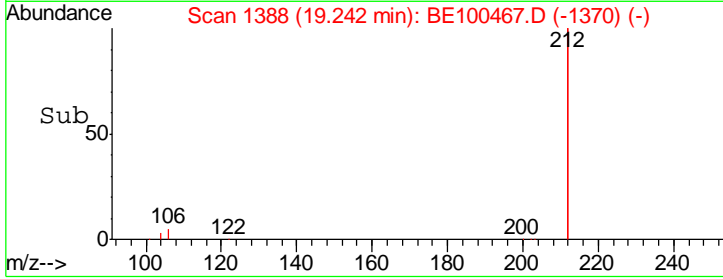
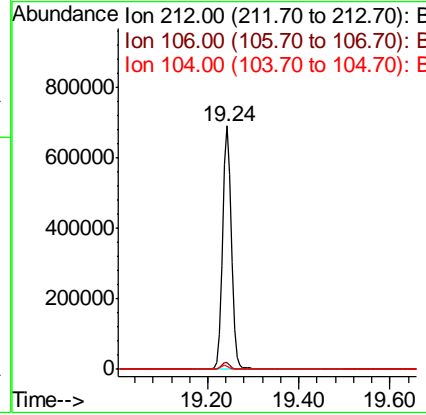
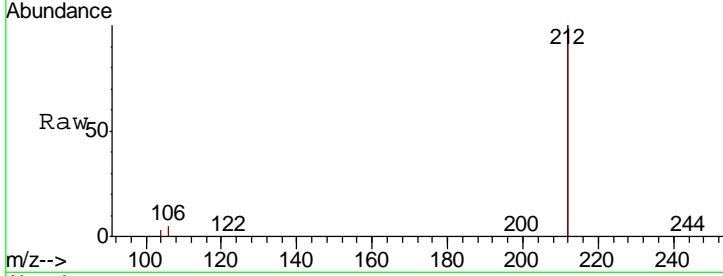
#25
 Fluoranthene-d10
 Concen: 3.796 ng
 RT: 19.24 min Scan# 1388
 Delta R.T. 0.00 min
 Lab File: BE100467.D
 Acq: 19 Jul 2019 12:26

Instrument :
 BNA_E
ClientSampled :
 SSTDICC3.2

Tgt Ion	Resp	Lower	Upper
212	100		
106	2.8	2.2	3.2
104	1.5	1.2	1.8

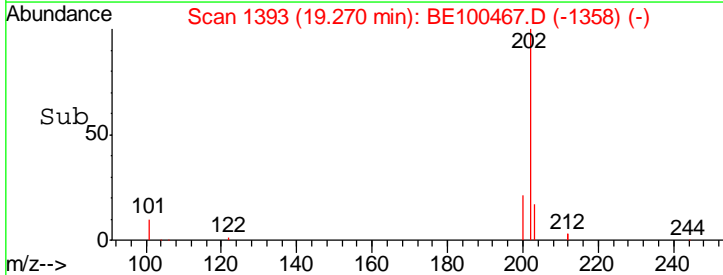
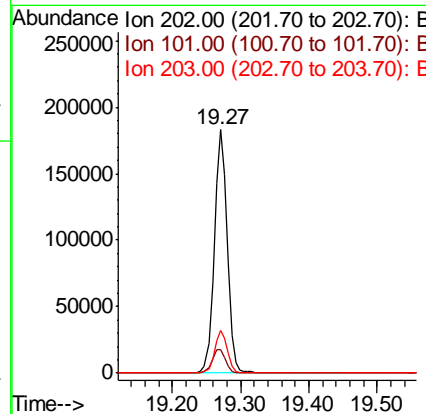
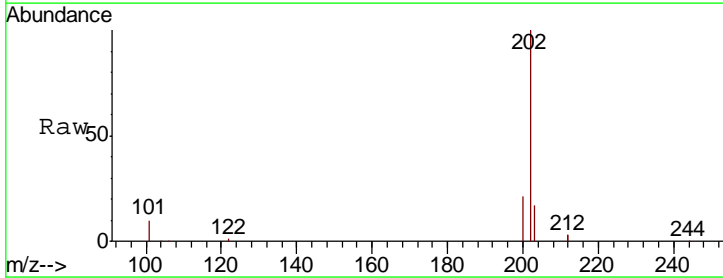
Manual Integrations
APPROVED

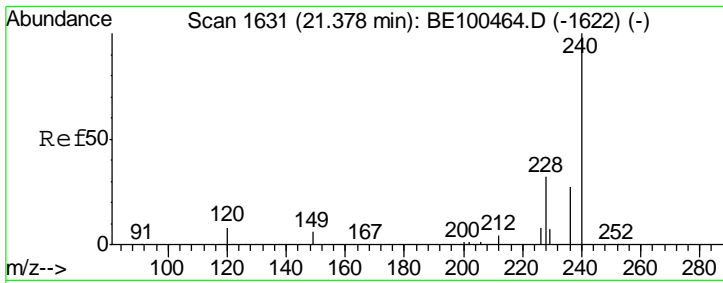
mohammad
 7/22/2019 10:02:11 AM



#26
 Fluoranthene
 Concen: 3.395 ng
 RT: 19.27 min Scan# 1393
 Delta R.T. 0.00 min
 Lab File: BE100467.D
 Acq: 19 Jul 2019 12:26

Tgt Ion	Resp	Lower	Upper
202	100		
101	10.2	8.3	12.5
203	17.5	13.6	20.4



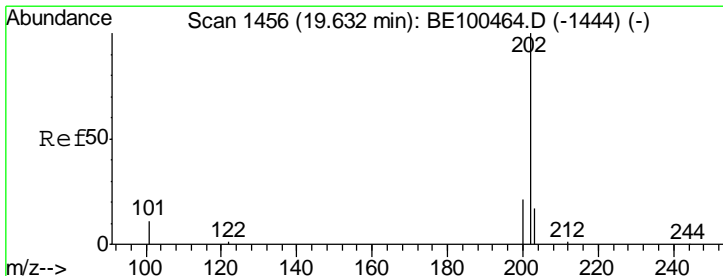
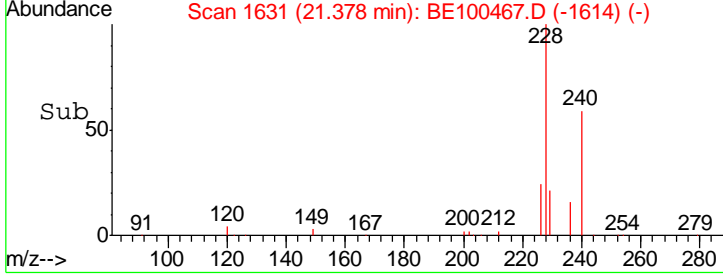
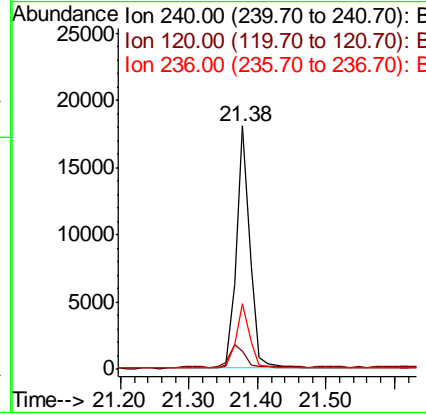
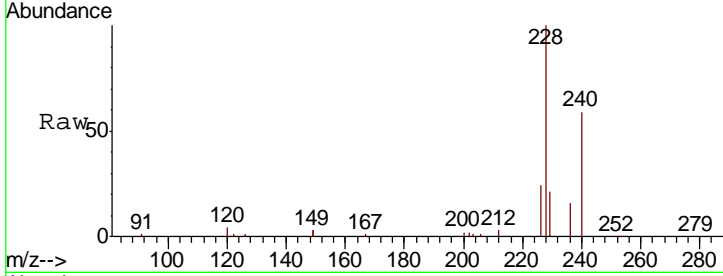


#27
 Chrysene-d12
 Concen: 0.400 ng
 RT: 21.38 min Scan# 1631
 Delta R.T. 0.00 min
 Lab File: BE100467.D
 Acq: 19 Jul 2019 12:26

Instrument :
 BNA_E
ClientSampled :
 SSTDICC3.2

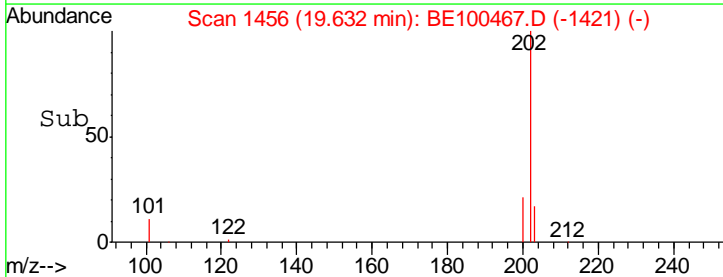
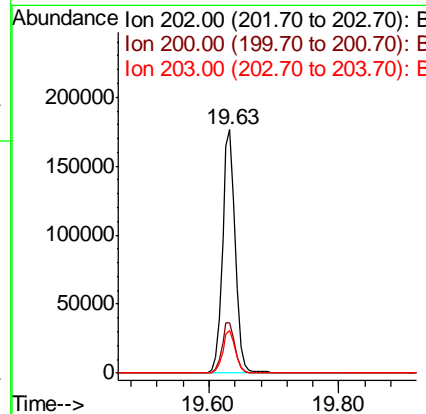
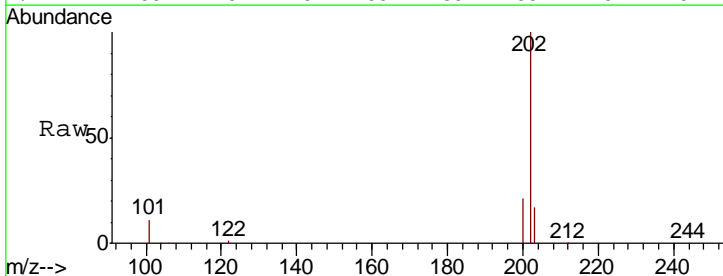
Tgt Ion	Resp	Lower	Upper
240	24610		
240	100		
120	7.5	7.1	10.7
236	27.0	21.7	32.5

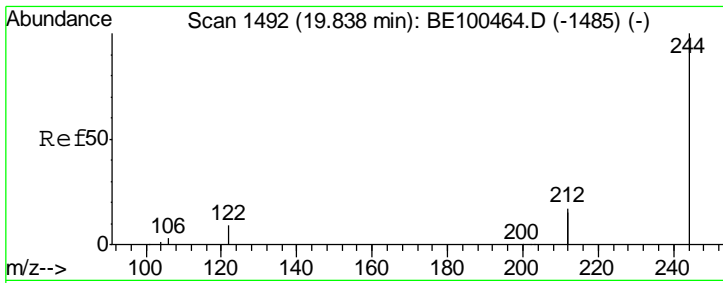
Manual Integrations
APPROVED
 mohammad
 7/22/2019 10:02:11 AM



#28
 Pyrene
 Concen: 3.413 ng
 RT: 19.63 min Scan# 1456
 Delta R.T. 0.00 min
 Lab File: BE100467.D
 Acq: 19 Jul 2019 12:26

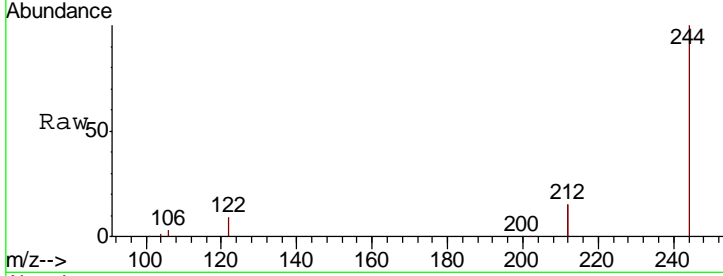
Tgt Ion	Resp	Lower	Upper
202	245722		
202	100		
200	21.2	16.7	25.1
203	17.6	13.8	20.8





#29
 Terphenyl-d14
 Concen: 3.186 ng
 RT: 19.84 min Scan# 1492
 Delta R.T. 0.00 min
 Lab File: BE100467.D
 Acq: 19 Jul 2019 12:26

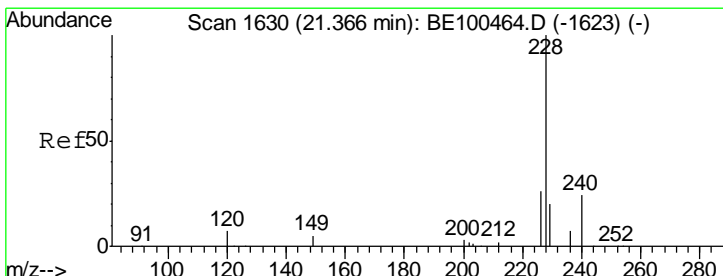
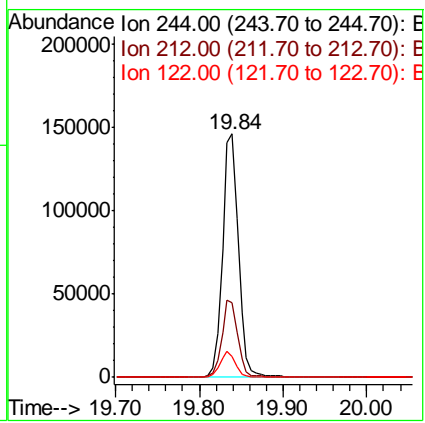
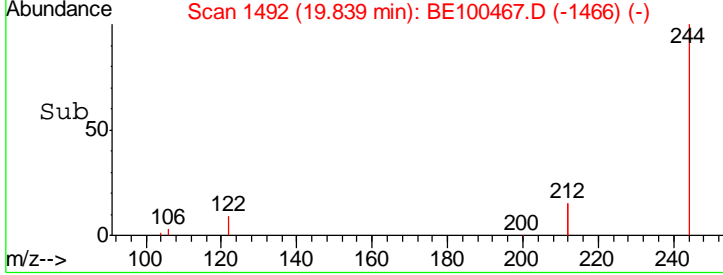
Instrument :
 BNA_E
ClientSampled :
 SSTDICC3.2



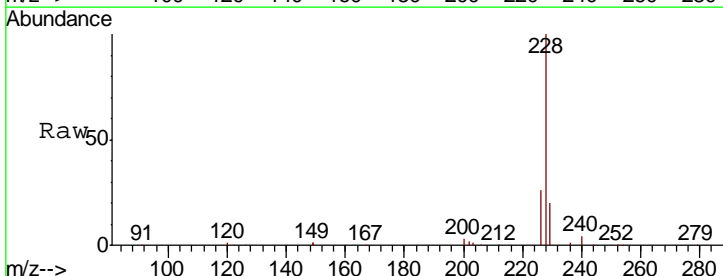
Tgt Ion: 244 Resp: 192142

Ion	Ratio	Lower	Upper
244	100		
212	30.9	26.6	40.0
122	8.6	7.6	11.4

Manual Integrations
APPROVED
 mohammad
 7/22/2019 10:02:11 AM

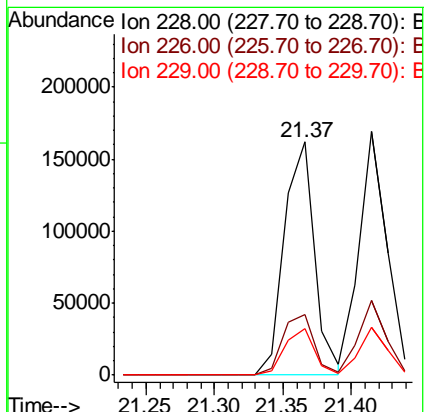
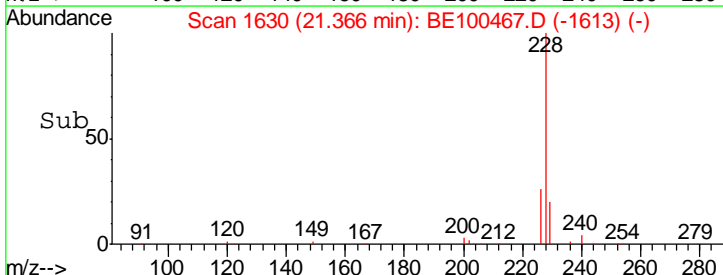


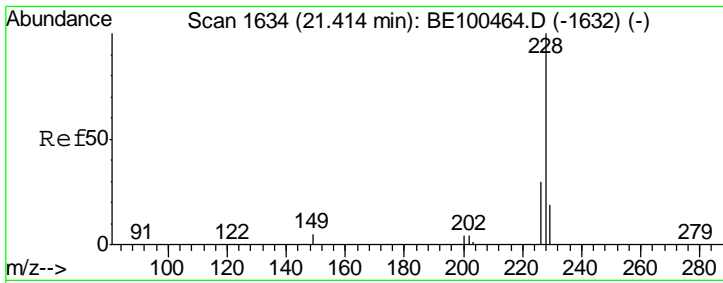
#30
 Benzo(a)anthracene
 Concen: 3.697 ng
 RT: 21.37 min Scan# 1630
 Delta R.T. 0.00 min
 Lab File: BE100467.D
 Acq: 19 Jul 2019 12:26



Tgt Ion: 228 Resp: 246960

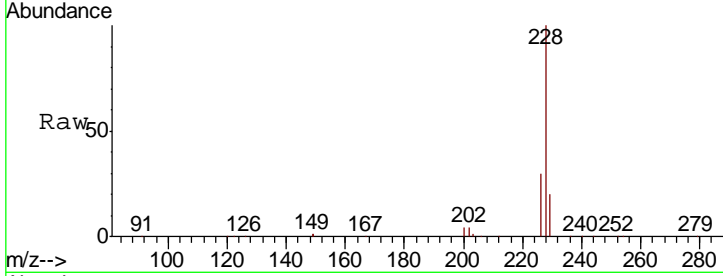
Ion	Ratio	Lower	Upper
228	100		
226	26.3	21.3	31.9
229	19.8	16.6	25.0





#31
 Chrysene
 Concen: 3.007 ng
 RT: 21.41 min Scan# 1634
 Delta R.T. 0.00 min
 Lab File: BE100467.D
 Acq: 19 Jul 2019 12:26

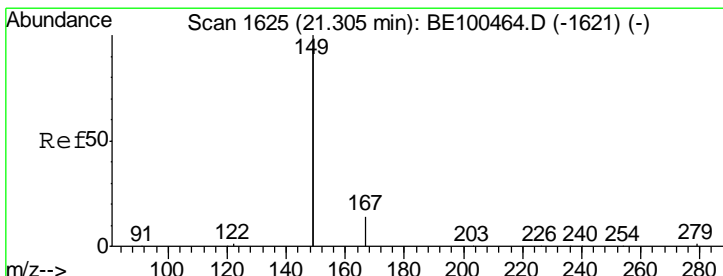
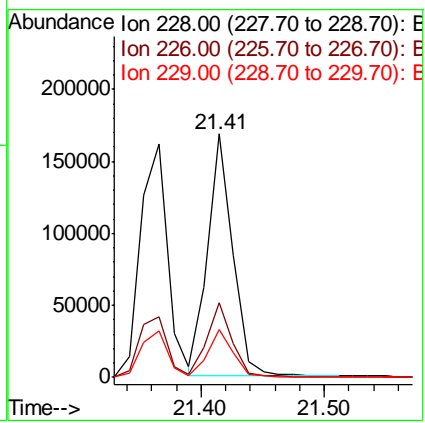
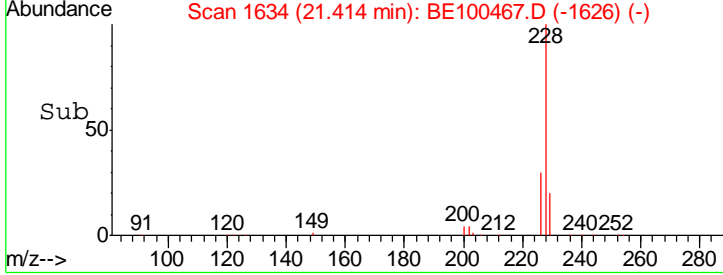
Instrument :
 BNA_E
 ClientSampled :
 SSTDICC3.2



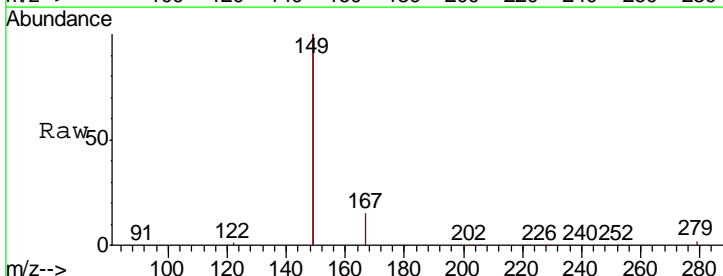
Tgt Ion: 228 Resp: 238529

Ion	Ratio	Lower	Upper
228	100		
226	30.5	24.5	36.7
229	19.7	16.0	24.0

Manual Integrations
 APPROVED
 mohammad
 7/22/2019 10:02:11 AM

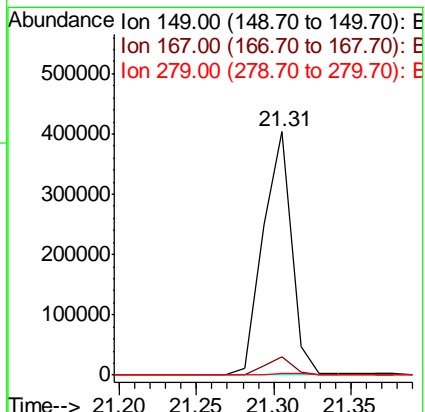
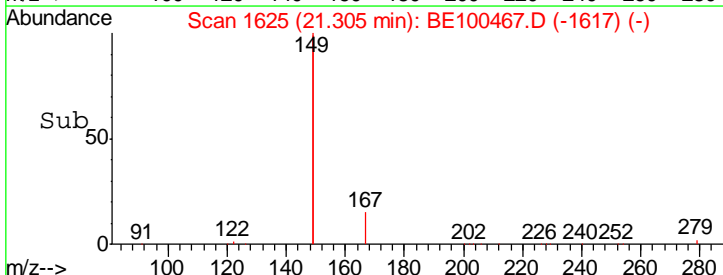


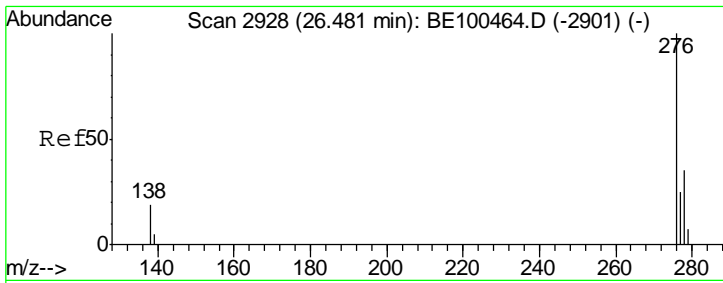
#32
 Bis(2-ethylhexyl)phthalate
 Concen: 10.751 ng
 RT: 21.31 min Scan# 1625
 Delta R.T. 0.00 min
 Lab File: BE100467.D
 Acq: 19 Jul 2019 12:26



Tgt Ion: 149 Resp: 515046

Ion	Ratio	Lower	Upper
149	100		
167	7.2	5.8	8.6
279	0.9	0.8	1.2



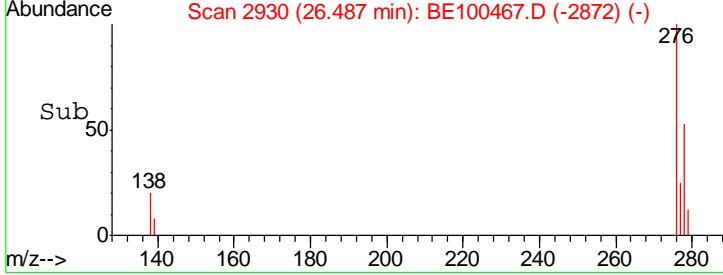
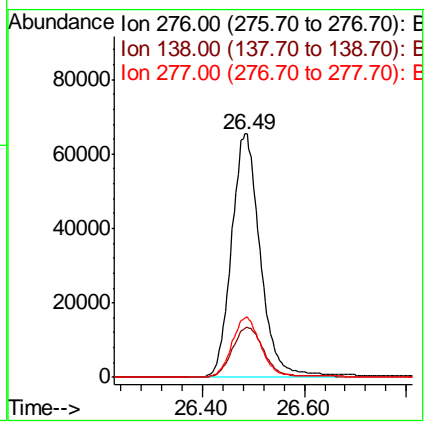
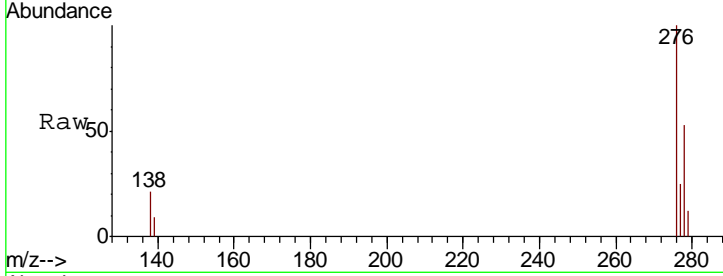


#33
 Indeno(1,2,3-cd)pyrene
 Concen: 3.613 ng
 RT: 26.49 min Scan# 2930
 Delta R.T. 0.01 min
 Lab File: BE100467.D
 Acq: 19 Jul 2019 12:26

Instrument :
 BNA_E
ClientSampled :
 SSTDICC3.2

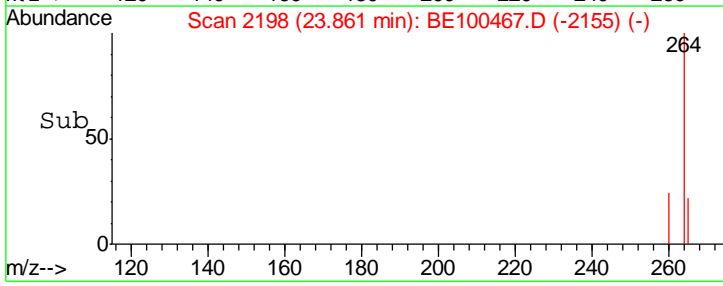
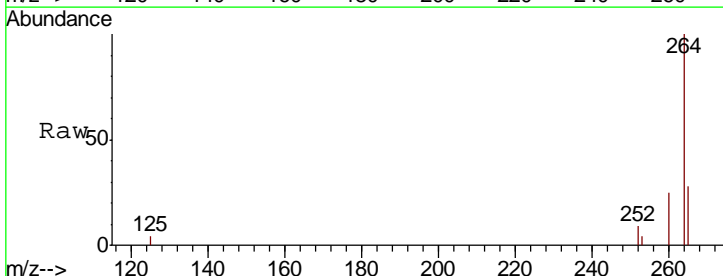
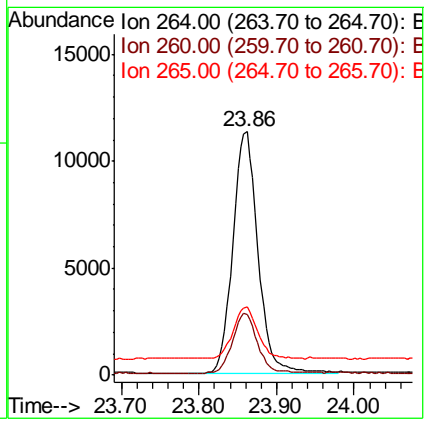
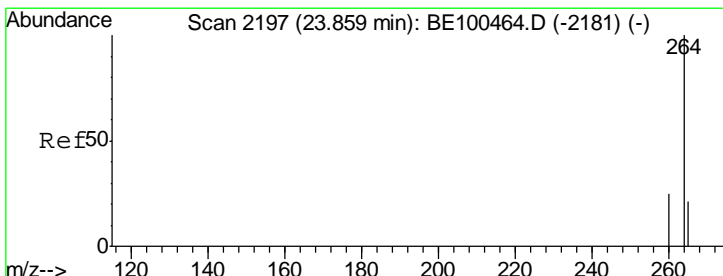
Tgt Ion	Resp	Lower	Upper
276	100		
138	22.3	17.4	26.0
277	24.9	19.4	29.0

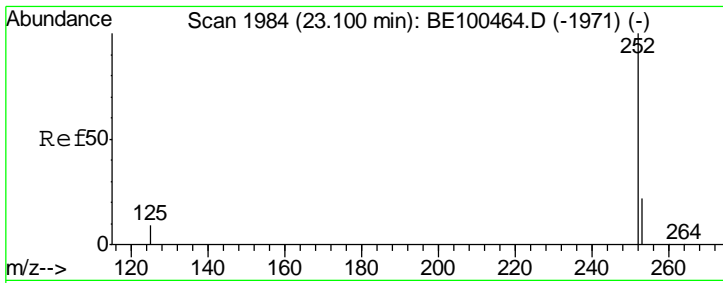
Manual Integrations
APPROVED
 mohammad
 7/22/2019 10:02:11 AM



#34
 Perylene-d12
 Concen: 0.400 ng
 RT: 23.86 min Scan# 2198
 Delta R.T. 0.00 min
 Lab File: BE100467.D
 Acq: 19 Jul 2019 12:26

Tgt Ion	Resp	Lower	Upper
264	100		
260	25.1	20.7	31.1
265	28.1	23.4	35.0





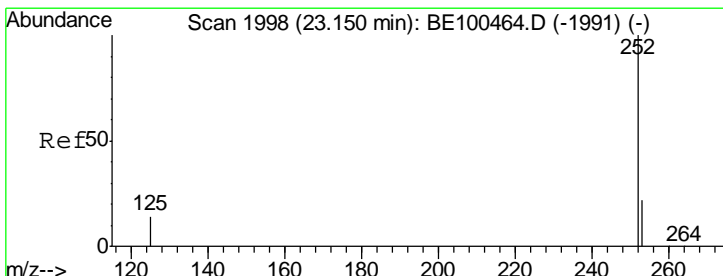
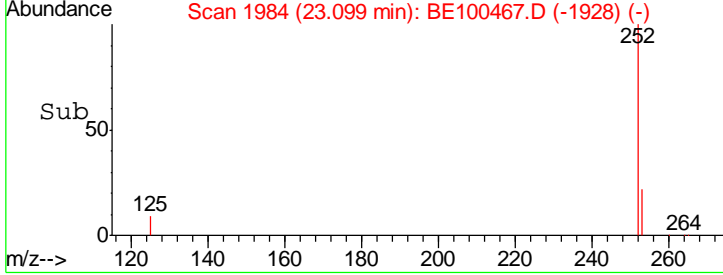
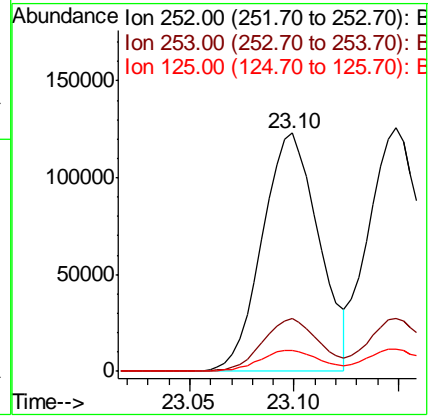
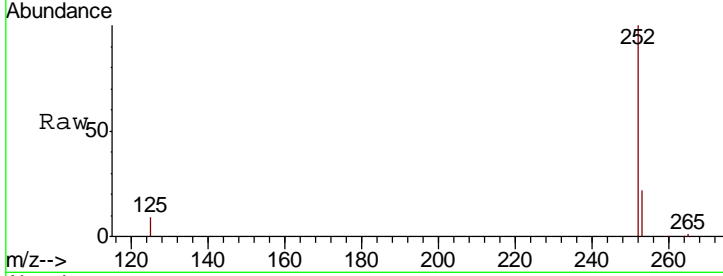
#35
 Benzo(b)fluoranthene
 Concen: 2.997 ng m
 RT: 23.10 min Scan# 1984
 Delta R.T. -0.00 min
 Lab File: BE100467.D
 Acq: 19 Jul 2019 12:26

Instrument :
 BNA_E
ClientSampled :
 SSTDICC3.2

Tgt Ion	Resp	Lower	Upper
252	231899		
253	22.3	18.5	27.7
125	8.9	9.0	13.4#

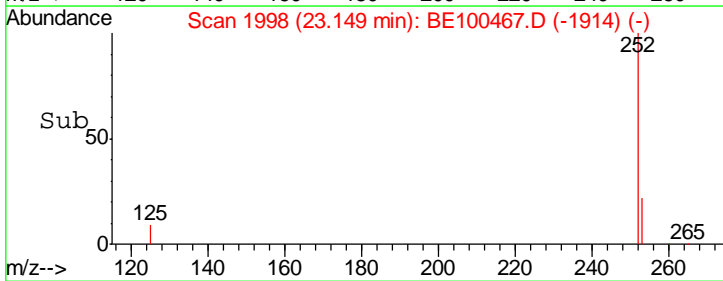
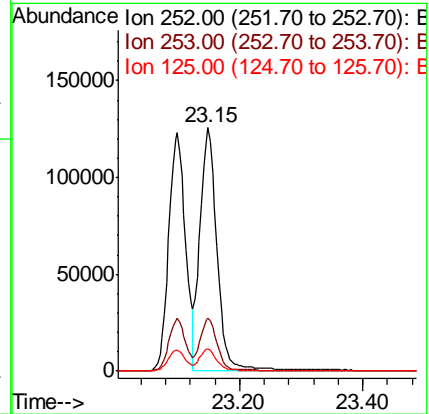
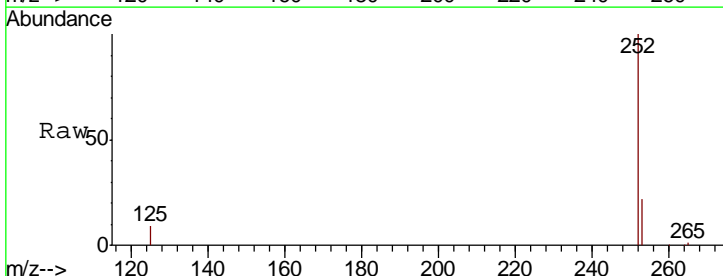
Manual Integrations
APPROVED

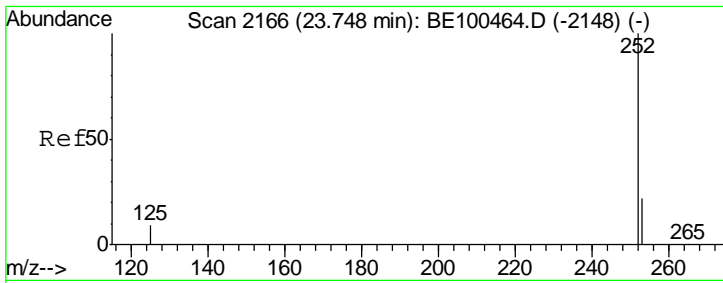
mohammad
 7/22/2019 10:02:11 AM



#36
 Benzo(k)fluoranthene
 Concen: 2.929 ng
 RT: 23.15 min Scan# 1998
 Delta R.T. -0.00 min
 Lab File: BE100467.D
 Acq: 19 Jul 2019 12:26

Tgt Ion	Resp	Lower	Upper
252	239859		
253	21.9	19.0	28.4
125	9.0	11.8	17.8#





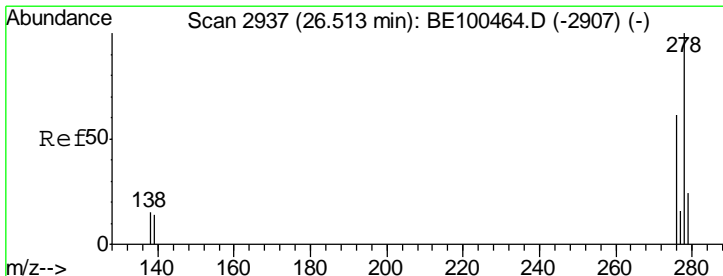
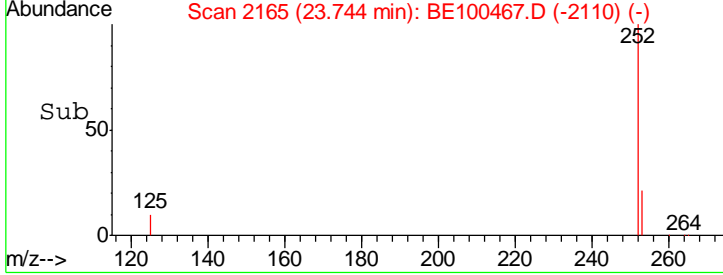
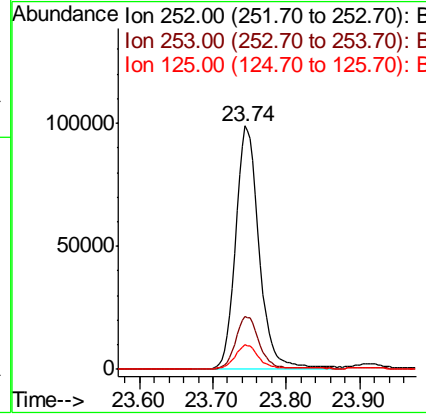
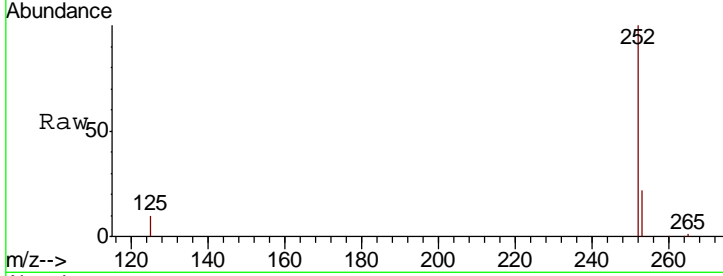
#37
 Benzo(a)pyrene
 Concen: 3.456 ng
 RT: 23.74 min Scan# 2165
 Delta R.T. -0.00 min
 Lab File: BE100467.D
 Acq: 19 Jul 2019 12:26

Instrument :
 BNA_E
ClientSampled :
 SSTDICC3.2

Tgt Ion	Resp	Lower	Upper
252	219897		
253	21.7	19.1	28.7
125	10.1	10.0	15.0

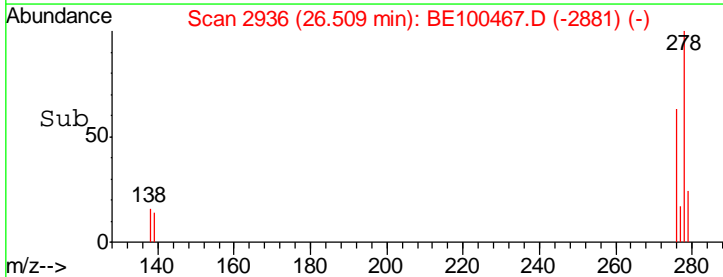
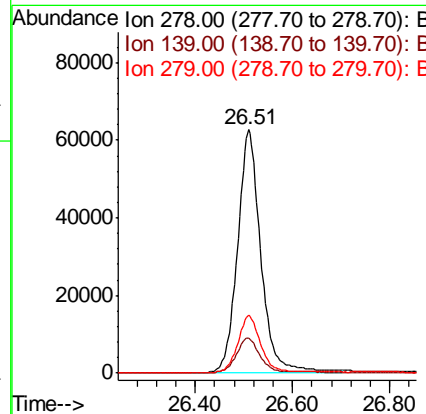
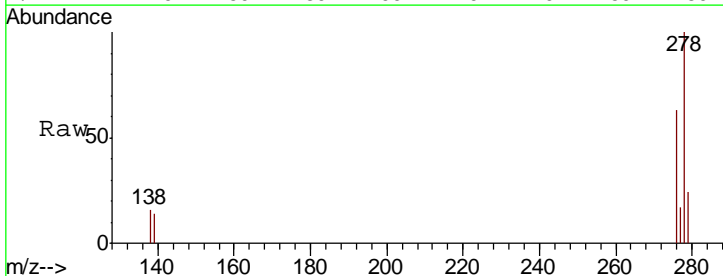
Manual Integrations
APPROVED

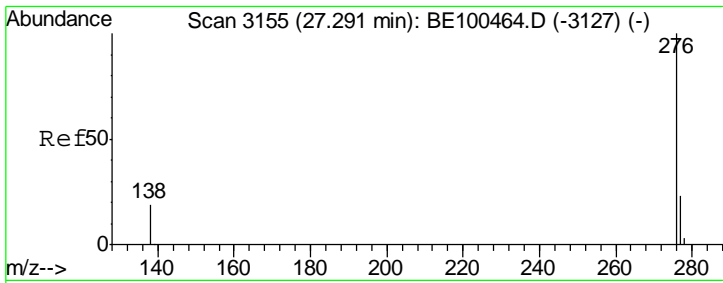
mohammad
 7/22/2019 10:02:11 AM



#38
 Dibenzo(a,h)anthracene
 Concen: 3.074 ng
 RT: 26.51 min Scan# 2936
 Delta R.T. -0.00 min
 Lab File: BE100467.D
 Acq: 19 Jul 2019 12:26

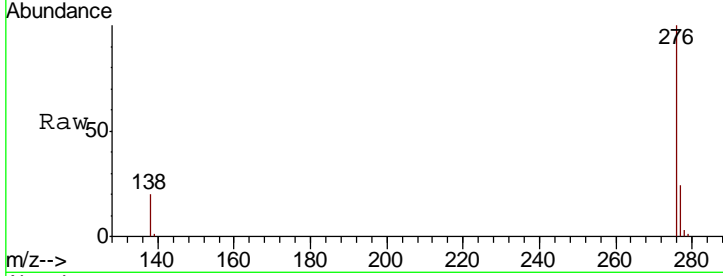
Tgt Ion	Resp	Lower	Upper
278	208583		
139	14.3	13.0	19.6
279	23.9	20.4	30.6





#39
 Benzo(a,h,i)perylene
 Concen: 2.947 ng
 RT: 27.29 min Scan# 3155
 Delta R.T. -0.00 min
 Lab File: BE100467.D
 Acq: 19 Jul 2019 12:26

Instrument :
 BNA_E
ClientSampled :
 SSTDICC3.2



Tot Ion: 276 Resp: 209133

Ion	Ratio	Lower	Upper
276	100		
277	24.0	19.9	29.9
138	19.6	16.7	25.1

Manual Integrations
APPROVED
 mohammad
 7/22/2019 10:02:11 AM

