

Data Path : Z:\SVOASRV\HPCHEM1\BNA E\DATA\BE072318\
 Data File : BE097031.D
 Acq On : 23 Jul 2018 10:55
 Operator : SJ/JU
 Sample : J4014-08MS
 Misc :
 ALS Vial : 3 Sample Multiplier: 1

Instrument :
 BNA_E
 ClientSampleId :
 RE104D3-071318MS

Quant Time: Jul 23 11:33:15 2018
 Quant Method : Z:\SVOASRV\HPCHEM1\BNA E\METHODS\8270-SIM-BE071618.M
 Quant Title : ASP BNA STANDARDS FOR 5 POINT CALIBRATION
 QLast Update : Fri Jul 20 11:34:20 2018
 Response via : Initial Calibration

Internal Standards	R.T.	QIon	Response	Conc	Units	Dev(Min)
1) 1,4-Dichlorobenzene-d4	7.39	152	1799	0.40	ng	0.00
7) Naphthalene-d8	10.15	136	7847	0.40	ng	0.00
13) Acenaphthene-d10	14.01	164	3940	0.40	ng	0.00
19) Phenanthrene-d10	16.76	188	12019	0.40	ng	0.00
27) Chrysene-d12	20.98	240	13407	0.40	ng	0.00
34) Perylene-d12	23.21	264	11647	0.40	ng	0.00

System Monitoring Compounds

4) 2-Fluorophenol	5.06	112	651	0.15	ng	0.00
5) Phenol-d6	6.60	99	498	0.08	ng	0.00
8) Nitrobenzene-d5	8.52	82	2450	0.43	ng	0.00
11) 2-Methylnaphthalene-d10	11.73	152	4702	0.41	ng	0.00
14) 2,4,6-Tribromophenol	15.52	330	358	0.42	ng	0.00
15) 2-Fluorobiphenyl	12.63	172	8121	0.55	ng	0.00
25) Fluoranthene-d10	18.81	212	57212	0.55	ng	0.00
29) Terphenyl-d14	19.43	244	12243	0.47	ng	0.00

Target Compounds

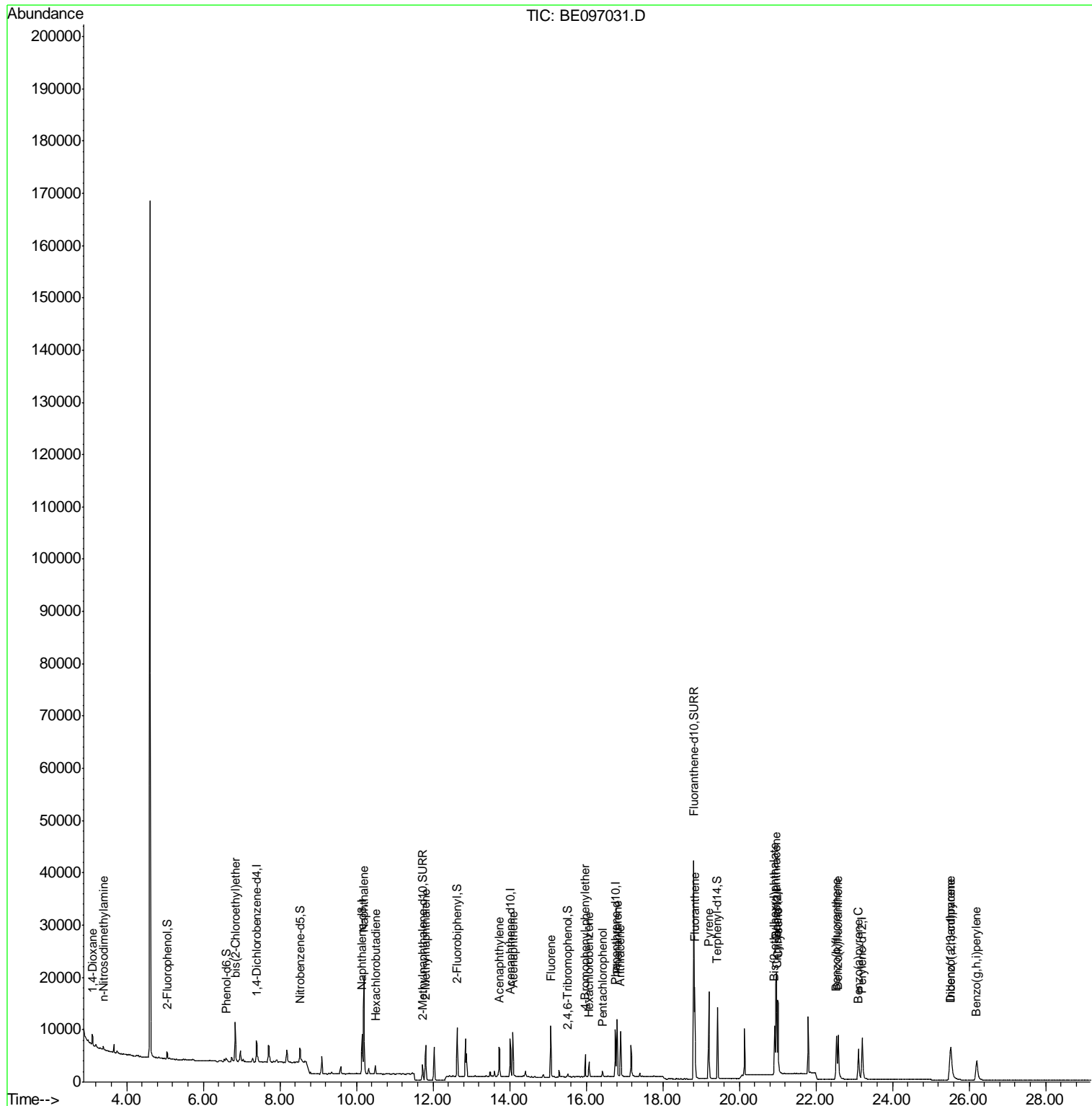
Target Compounds	R.T.	QIon	Response	Conc	Units	Qvalue
2) 1,4-Dioxane	3.11	88	1126	0.437	ng	91
3) n-Nitrosodimethylamine	3.38	42	485	0.167	ng	# 83
6) bis(2-Chloroethyl)ether	6.84	93	2316	0.359	ng	98
9) Naphthalene	10.20	128	28868	0.411	ng	99
10) Hexachlorobutadiene	10.50	225	1203	0.424	ng	99
12) 2-Methylnaphthalene	11.80	142	4630	0.389	ng	98
16) Acenaphthylene	13.73	152	6868	0.382	ng	99
17) Acenaphthene	14.08	154	4134	0.370	ng	# 90
18) Fluorene	15.07	166	5615	0.447	ng	# 79
20) 4-Bromophenyl-phenylether	15.97	248	2121	0.373	ng	87
21) Hexachlorobenzene	16.08	284	2163	0.343	ng	# 84
22) Pentachlorophenol	16.43	266	571	0.585	ng	# 76
23) Phenanthrene	16.81	178	11955	0.415	ng	99
24) Anthracene	16.89	178	10404	0.415	ng	96
26) Fluoranthene	18.84	202	15102	0.497	ng	98
28) Pyrene	19.20	202	15211	0.384	ng	99
30) Benzo(a)anthracene	20.96	228	13489	0.423	ng	98
31) Chrysene	21.02	228	14868	0.415	ng	99
32) Bis(2-ethylhexyl)phthalate	20.92	149	12146	0.381	ng	99
33) Indeno(1,2,3-cd)pyrene	25.51	276	11945	0.458	ng	# 92
35) Benzo(b)fluoranthene	22.54	252	11435	0.385	ng	# 87
36) Benzo(k)fluoranthene	22.58	252	14126	0.400	ng	96
37) Benzo(a)pyrene	23.11	252	10500	0.412	ng	# 92
38) Dibenzo(a,h)anthracene	25.53	278	9972	0.461	ng	# 95
39) Benzo(g,h,i)perylene	26.20	276	10090	0.417	ng	# 89

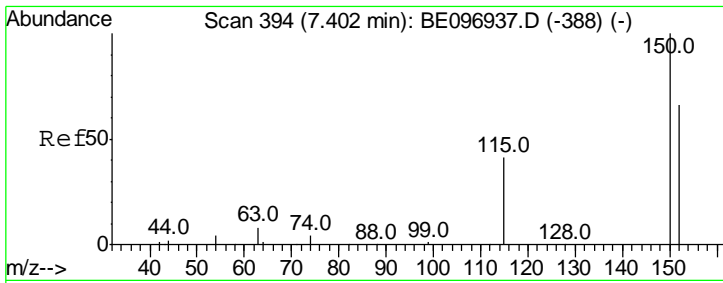
(#) = qualifier out of range (m) = manual integration (+) = signals summed

Data Path : Z:\SVOASRV\HPCHEM1\BNA E\DATA\BE072318\
 Data File : BE097031.D
 Acq On : 23 Jul 2018 10:55
 Operator : SJ/JU
 Sample : J4014-08MS
 Misc :
 ALS Vial : 3 Sample Multiplier: 1

Instrument :
 BNA_E
 ClientSampleId :
 RE104D3-071318MS

Quant Time: Jul 23 11:33:15 2018
 Quant Method : Z:\SVOASRV\HPCHEM1\BNA E\METHODS\8270-SIM-BE071618.M
 Quant Title : ASP BNA STANDARDS FOR 5 POINT CALIBRATION
 QLast Update : Fri Jul 20 11:34:20 2018
 Response via : Initial Calibration

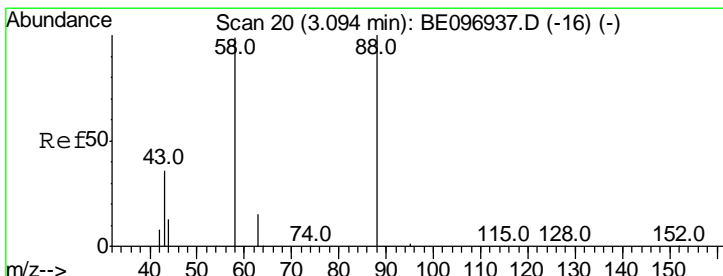
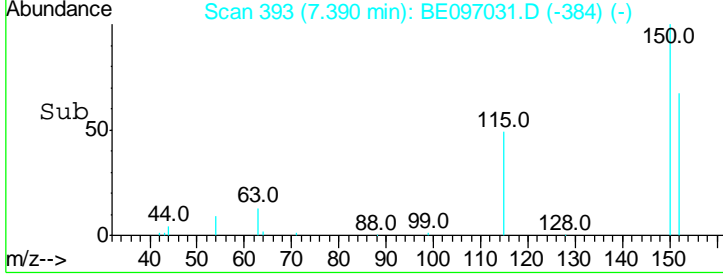
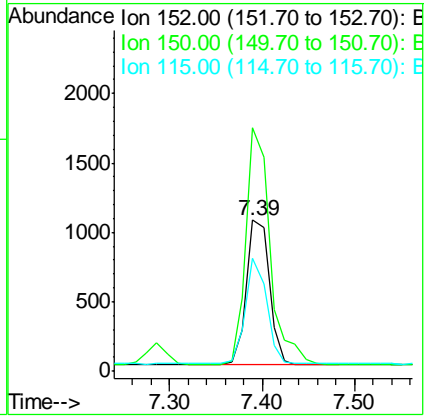
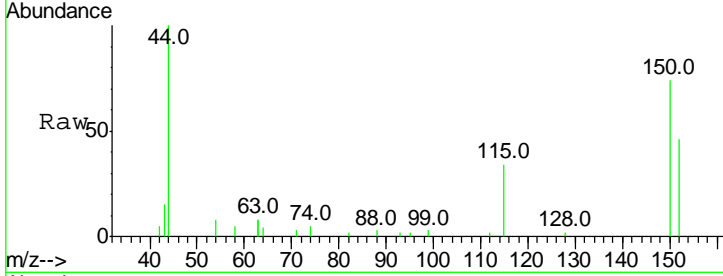




#1
 1,4-Dichlorobenzene-d4
 Concen: 0.400 ng
 RT: 7.39 min Scan# 393
 Delta R.T. -0.00 min
 Lab File: BE097031.D
 Acq: 23 Jul 2018 10:55

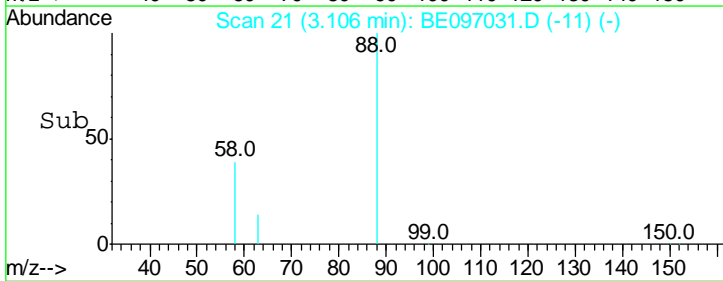
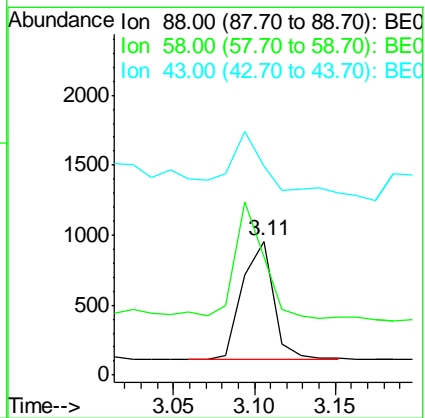
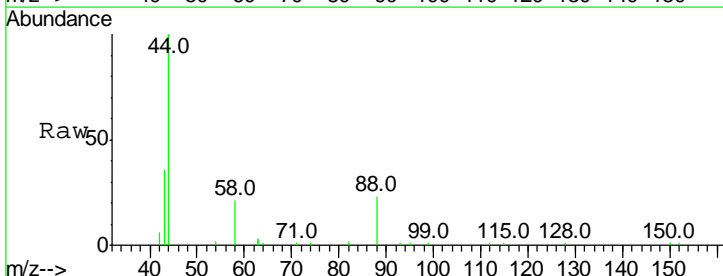
Instrument :
 BNA_E
ClientSampleId :
 RE104D3-071318MS

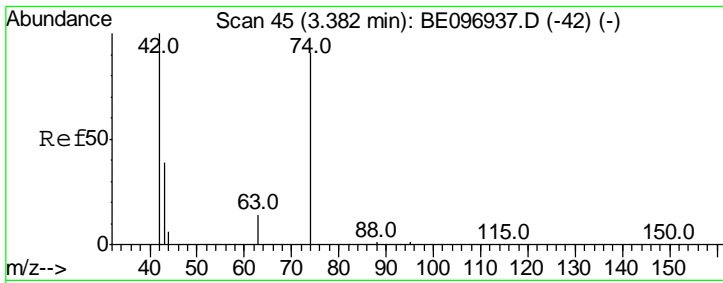
Tgt Ion	Resp	Lower	Upper
152	1799		
152	100		
150	161.3	117.2	175.8
115	74.7	57.0	85.6



#2
 1,4-Dioxane
 Concen: 0.437 ng
 RT: 3.11 min Scan# 21
 Delta R.T. 0.01 min
 Lab File: BE097031.D
 Acq: 23 Jul 2018 10:55

Tgt Ion	Resp	Lower	Upper
88	1126		
88	100		
58	91.7	63.2	94.8
43	52.5	41.2	61.8

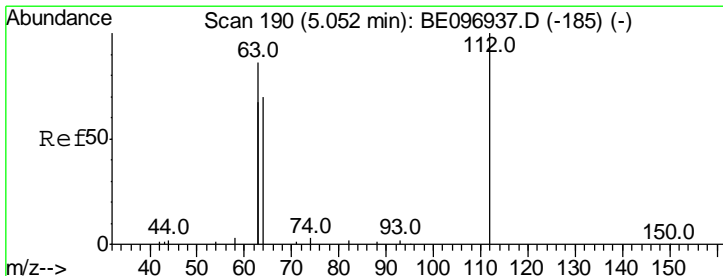
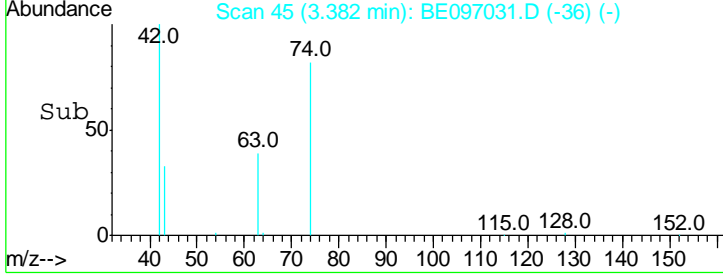
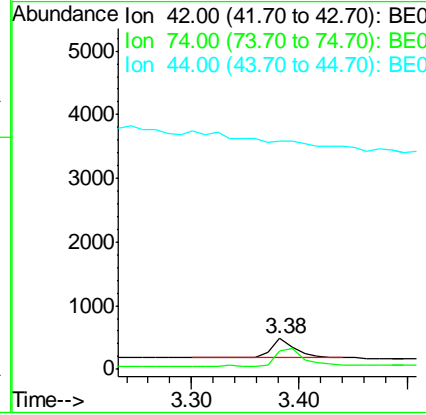
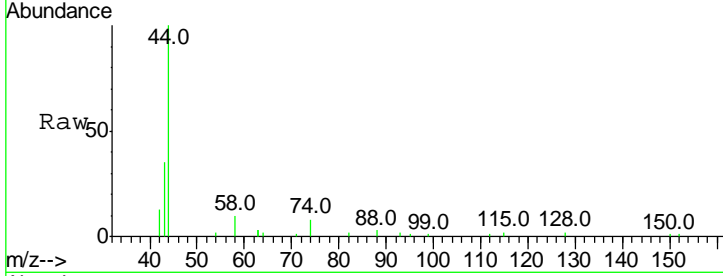




#3
 n-Nitrosodimethylamine
 Concen: 0.167 ng
 RT: 3.38 min Scan# 45
 Delta R.T. -0.00 min
 Lab File: BE097031.D
 Acq: 23 Jul 2018 10:55

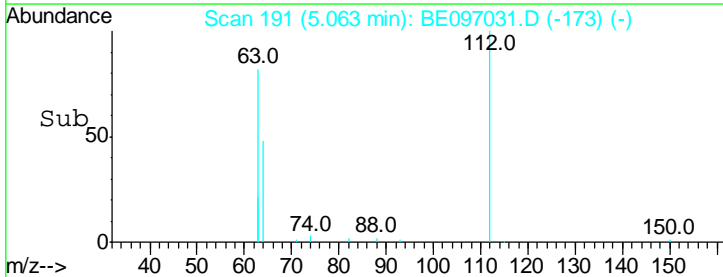
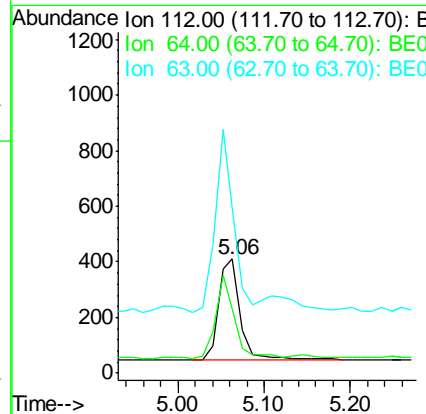
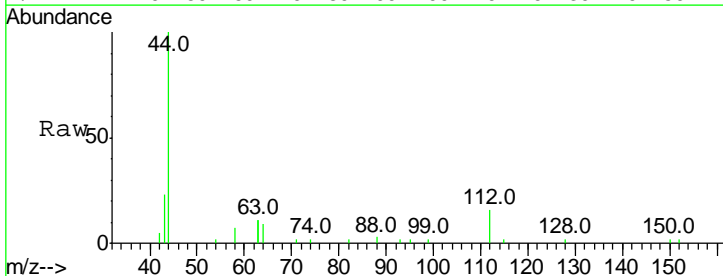
Instrument :
 BNA_E
ClientSampleId :
 RE104D3-071318MS

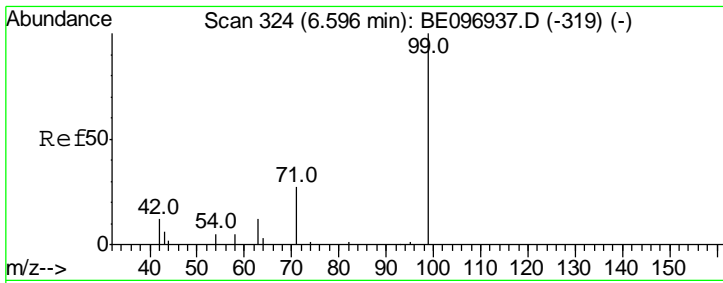
Tgt Ion	Resp	Lower	Upper
42	100		
74	103.3	96.0	144.0
44	0.0	12.0	18.0#



#4
 2-Fluorophenol
 Concen: 0.151 ng
 RT: 5.06 min Scan# 191
 Delta R.T. 0.01 min
 Lab File: BE097031.D
 Acq: 23 Jul 2018 10:55

Tgt Ion	Resp	Lower	Upper
112	100		
64	71.3	60.1	90.1
63	154.7	116.8	175.2

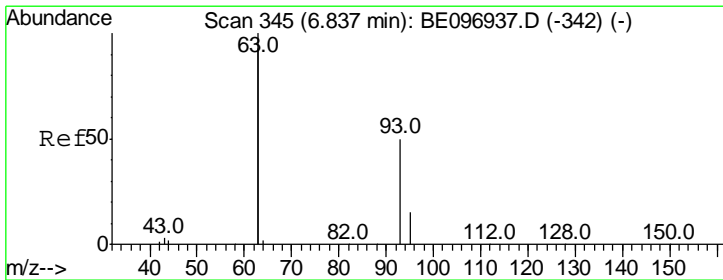
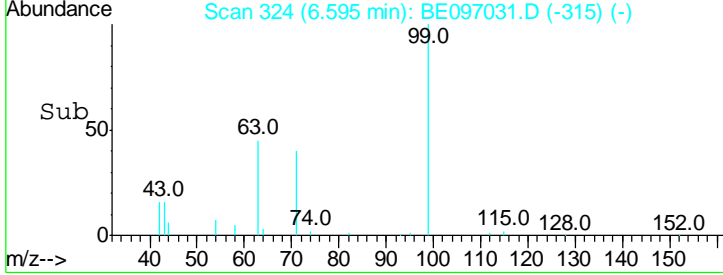
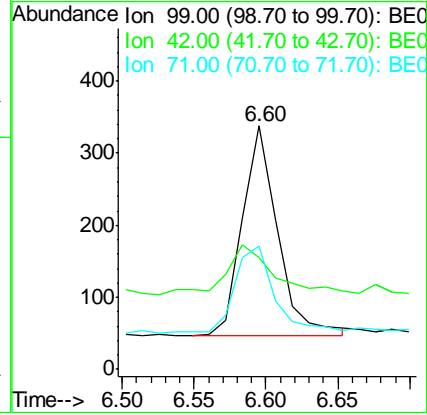
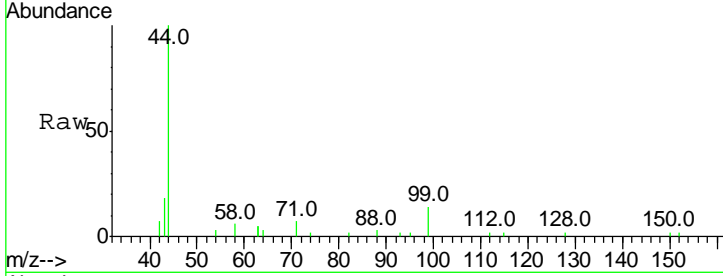




#5
 Phenol-d6
 Concen: 0.076 ng
 RT: 6.60 min Scan# 324
 Delta R.T. -0.00 min
 Lab File: BE097031.D
 Acq: 23 Jul 2018 10:55

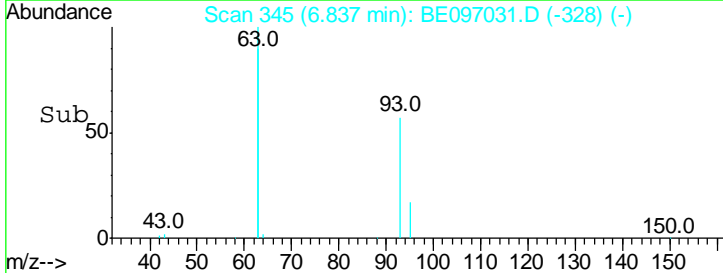
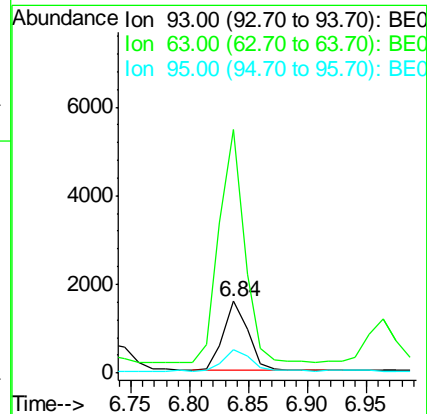
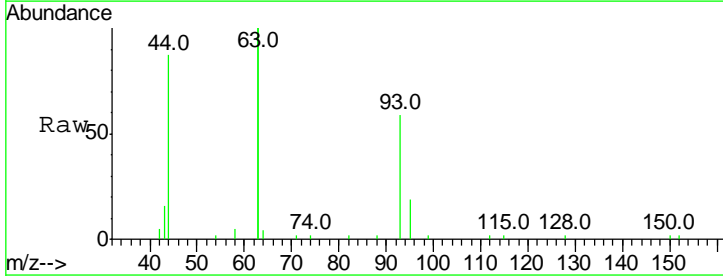
Instrument :
 BNA_E
 ClientSampleID :
 RE104D3-071318MS

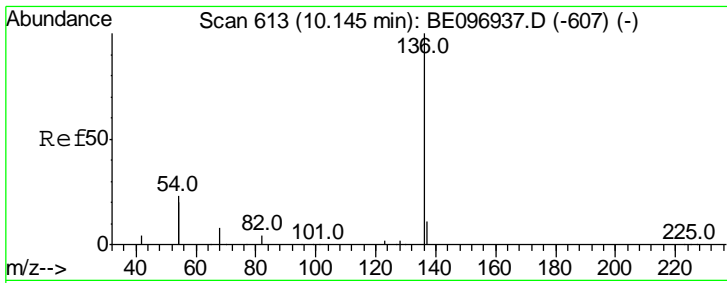
Tgt Ion	Resp	Lower	Upper
99	498		
99	100		
42	32.1	20.2	30.2#
71	45.0	28.4	42.6#



#6
 bis(2-Chloroethyl)ether
 Concen: 0.359 ng
 RT: 6.84 min Scan# 345
 Delta R.T. -0.00 min
 Lab File: BE097031.D
 Acq: 23 Jul 2018 10:55

Tgt Ion	Resp	Lower	Upper
93	2316		
93	100		
63	338.8	275.3	412.9
95	32.4	25.2	37.8



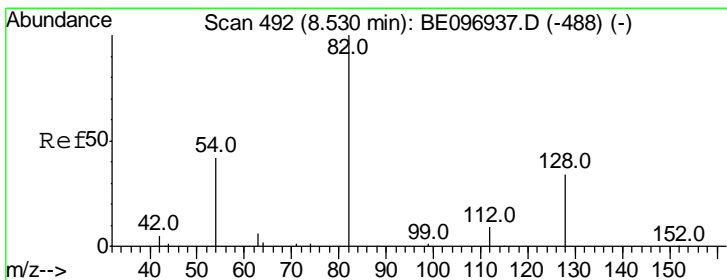
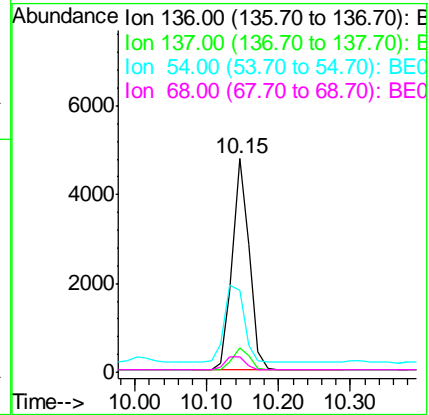
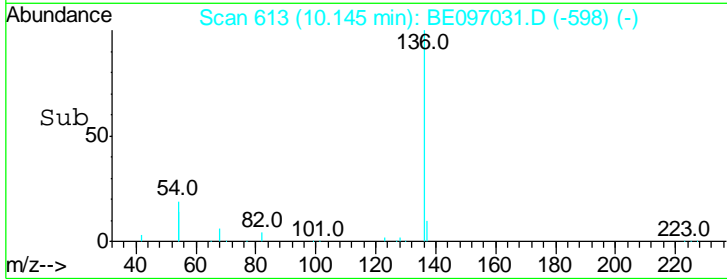
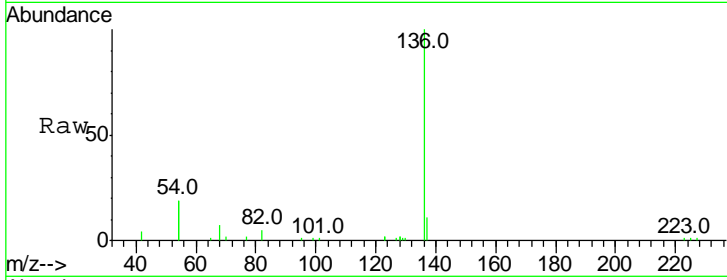


#7
 Naphthalene-d8
 Concen: 0.400 ng
 RT: 10.15 min Scan# 613
 Delta R.T. -0.00 min
 Lab File: BE097031.D
 Acq: 23 Jul 2018 10:55

Instrument :
 BNA_E
ClientSampleId :
 RE104D3-071318MS

Tgt Ion: 136 Resp: 7847

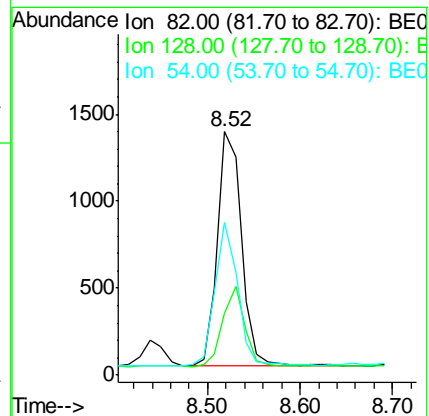
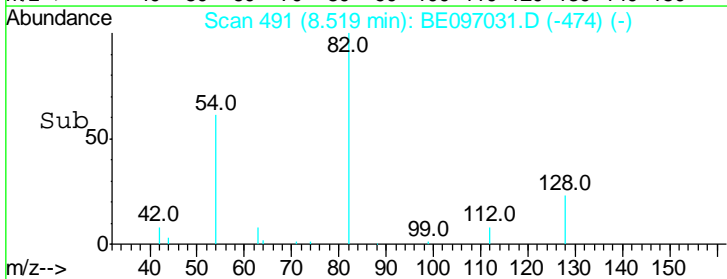
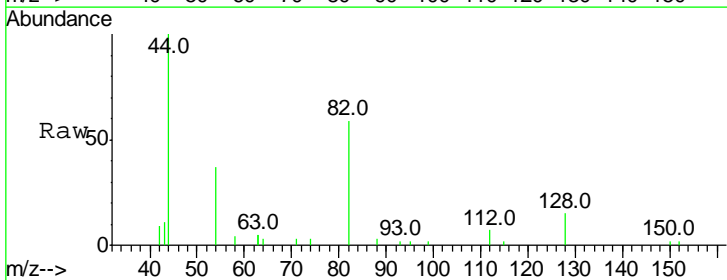
Ion	Ratio	Lower	Upper
136	100		
137	11.4	9.5	14.3
54	38.1	29.1	43.7
68	7.4	6.2	9.2

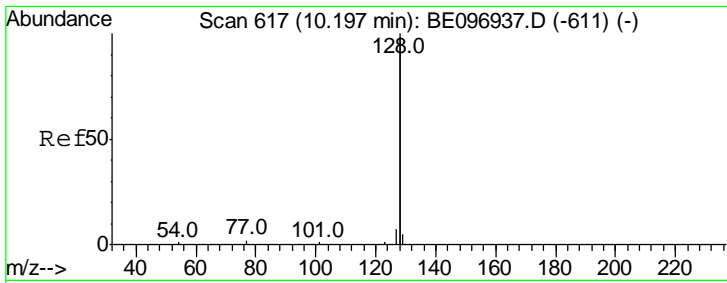


#8
 Nitrobenzene-d5
 Concen: 0.428 ng
 RT: 8.52 min Scan# 491
 Delta R.T. -0.00 min
 Lab File: BE097031.D
 Acq: 23 Jul 2018 10:55

Tgt Ion: 82 Resp: 2450

Ion	Ratio	Lower	Upper
82	100		
128	25.6	24.0	36.0
54	62.6	40.0	60.0#



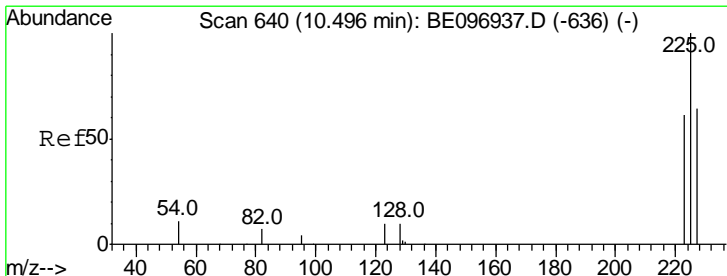
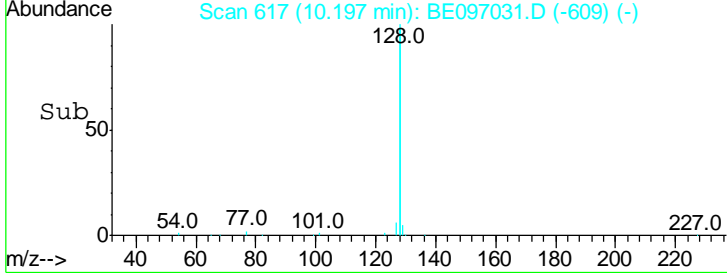
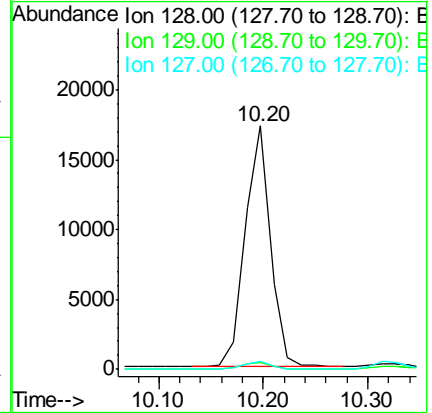
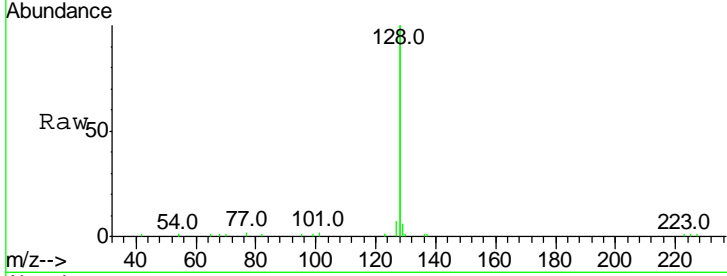


#9
 Naphthalene
 Concen: 0.411 ng
 RT: 10.20 min Scan# 617
 Delta R.T. -0.00 min
 Lab File: BE097031.D
 Acq: 23 Jul 2018 10:55

Instrument :
 BNA_E
ClientSampleId :
 RE104D3-071318MS

Tgt Ion: 128 Resp: 28868

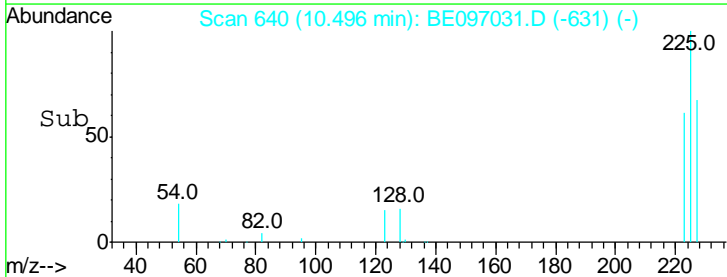
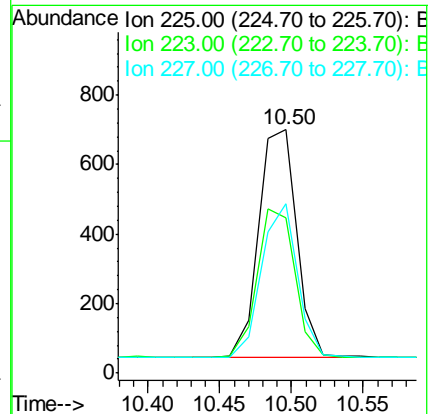
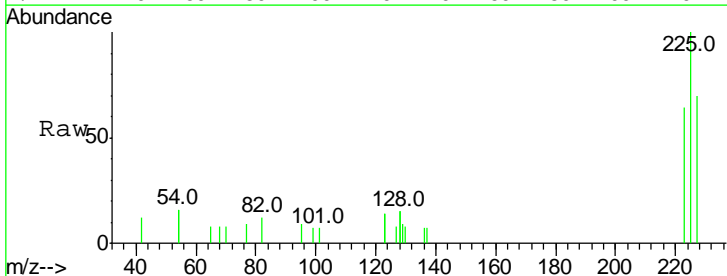
Ion	Ratio	Lower	Upper
128	100		
129	3.0	2.6	3.8
127	3.3	2.8	4.2

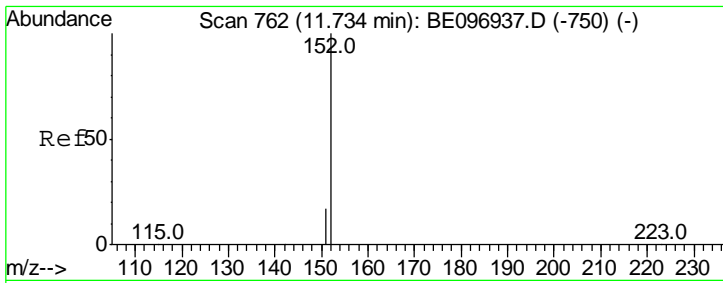


#10
 Hexachlorobutadiene
 Concen: 0.424 ng
 RT: 10.50 min Scan# 640
 Delta R.T. 0.01 min
 Lab File: BE097031.D
 Acq: 23 Jul 2018 10:55

Tgt Ion: 225 Resp: 1203

Ion	Ratio	Lower	Upper
225	100		
223	65.1	53.0	79.6
227	63.8	51.4	77.2

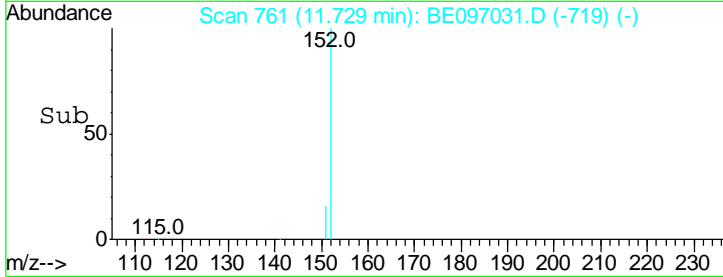
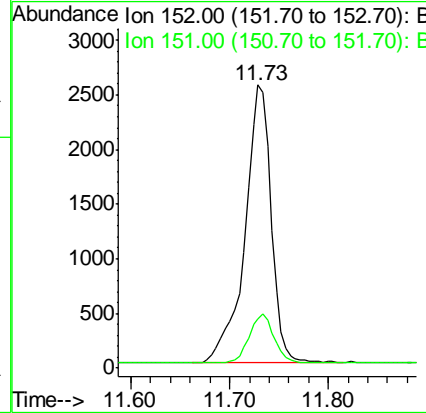
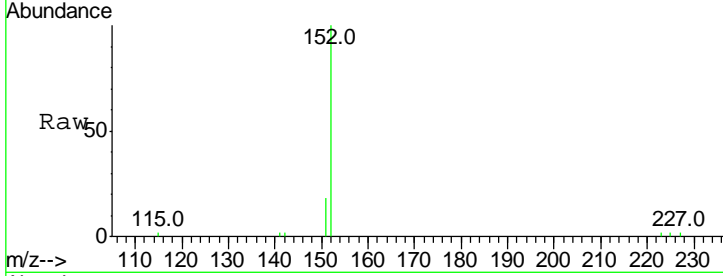




#11
 2-Methylnaphthalene-d10
 Concen: 0.411 ng
 RT: 11.73 min Scan# 761
 Delta R.T. -0.00 min
 Lab File: BE097031.D
 Acq: 23 Jul 2018 10:55

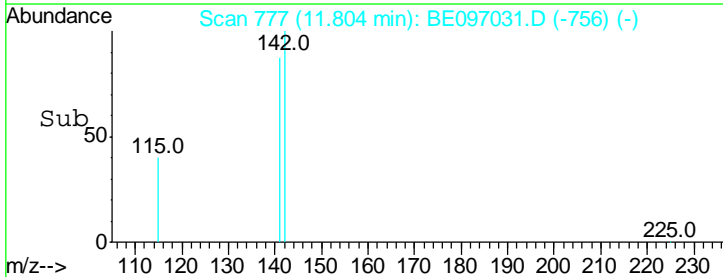
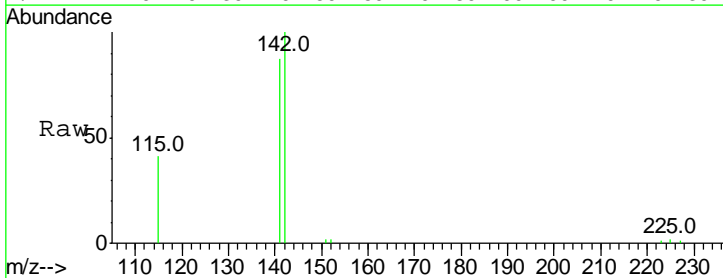
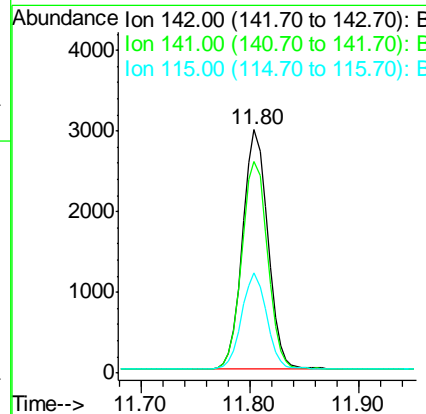
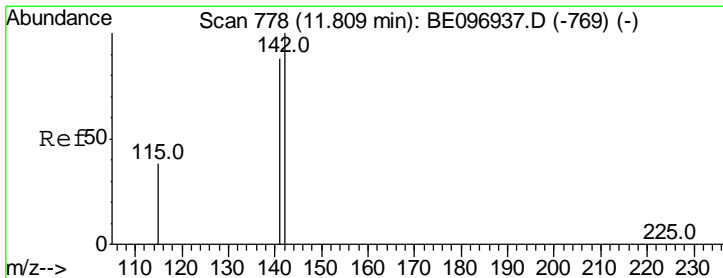
Instrument :
 BNA_E
 ClientSampleId :
 RE104D3-071318MS

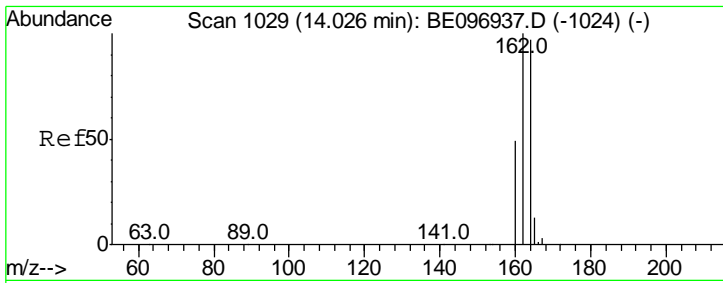
Tgt Ion	Resp	Lower	Upper
152	100		
151	16.6	15.4	23.0



#12
 2-Methylnaphthalene
 Concen: 0.389 ng
 RT: 11.80 min Scan# 777
 Delta R.T. -0.00 min
 Lab File: BE097031.D
 Acq: 23 Jul 2018 10:55

Tgt Ion	Resp	Lower	Upper
142	100		
141	87.1	70.4	105.6
115	41.4	31.7	47.5



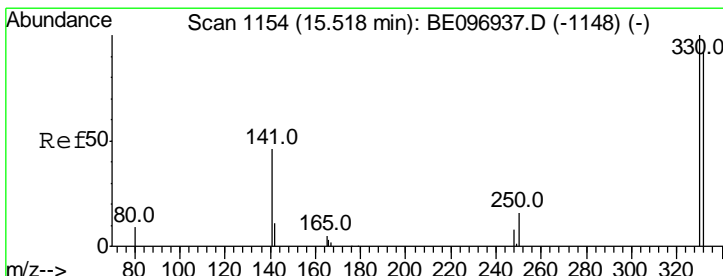
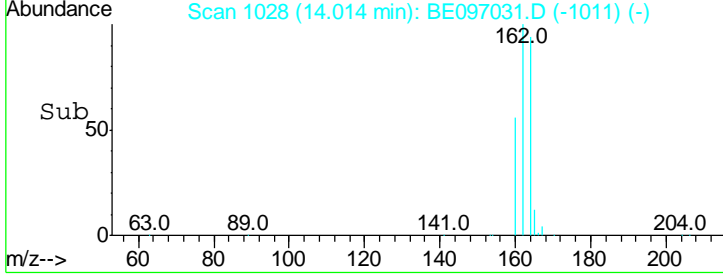
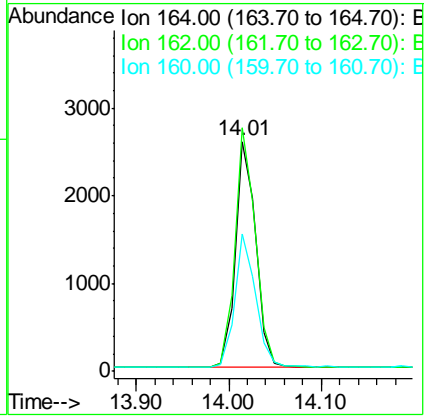
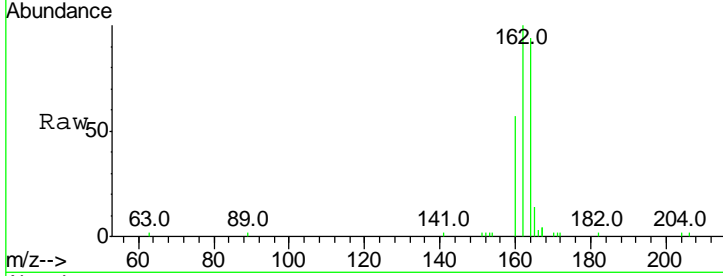


#13
 Acenaphthene-d10
 Concen: 0.400 ng
 RT: 14.01 min Scan# 1028
 Delta R.T. -0.00 min
 Lab File: BE097031.D
 Acq: 23 Jul 2018 10:55

Instrument :
 BNA_E
 ClientSampleId :
 RE104D3-071318MS

Tgt Ion:164 Resp: 3940

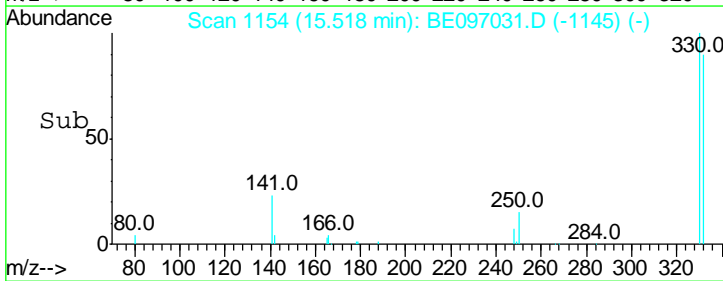
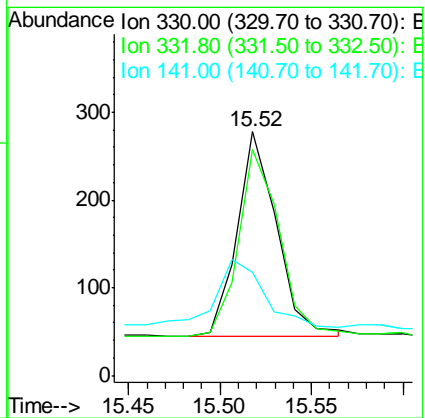
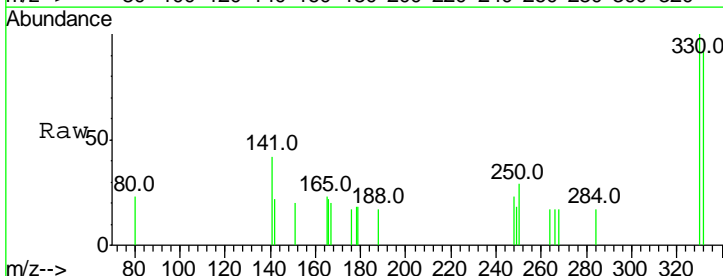
Ion	Ratio	Lower	Upper
164	100		
162	105.9	83.1	124.7
160	60.0	37.1	55.7#

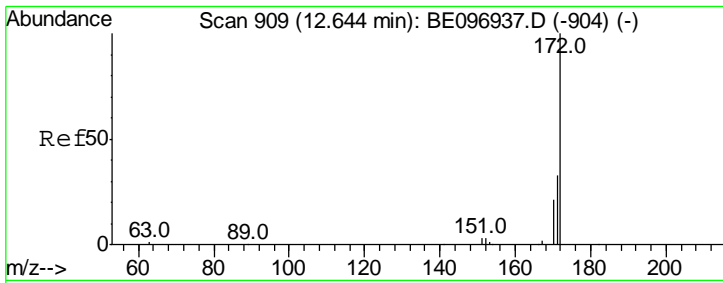


#14
 2,4,6-Tribromophenol
 Concen: 0.415 ng
 RT: 15.52 min Scan# 1154
 Delta R.T. 0.00 min
 Lab File: BE097031.D
 Acq: 23 Jul 2018 10:55

Tgt Ion:330 Resp: 358

Ion	Ratio	Lower	Upper
330	100		
332	94.4	152.7	229.1#
141	39.9	33.7	50.5



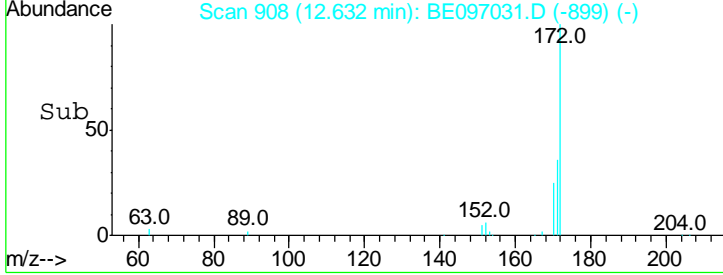
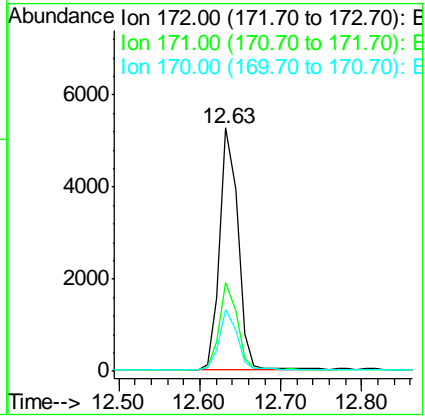
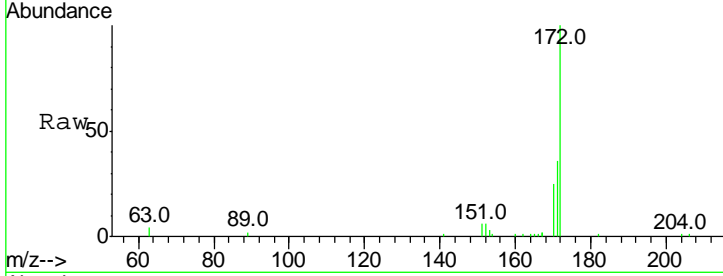


#15
 2-Fluorobiphenyl
 Concen: 0.554 ng
 RT: 12.63 min Scan# 908
 Delta R.T. -0.00 min
 Lab File: BE097031.D
 Acq: 23 Jul 2018 10:55

Instrument :
 BNA_E
ClientSampleId :
 RE104D3-071318MS

Tgt Ion: 172 Resp: 8121

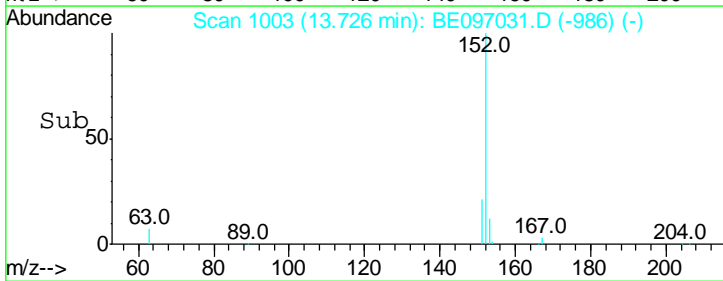
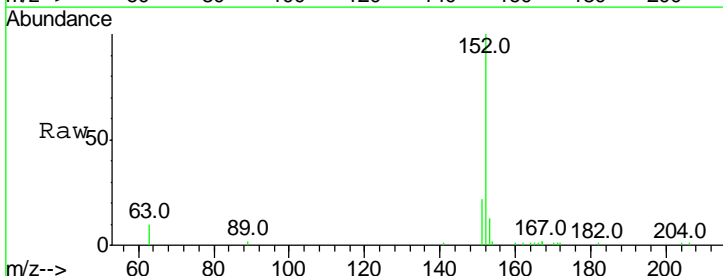
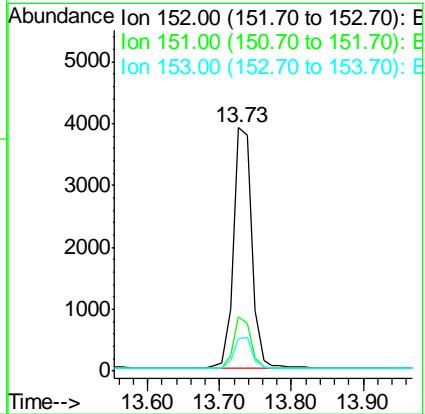
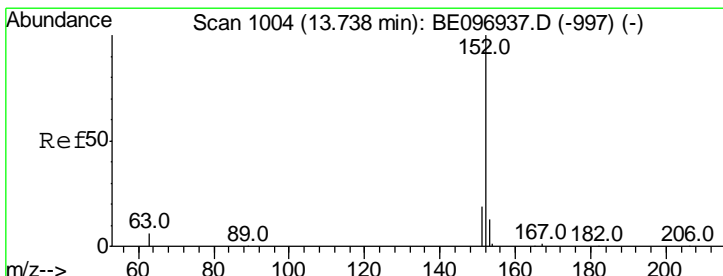
Ion	Ratio	Lower	Upper
172	100		
171	36.2	29.9	44.9
170	25.3	21.8	32.8

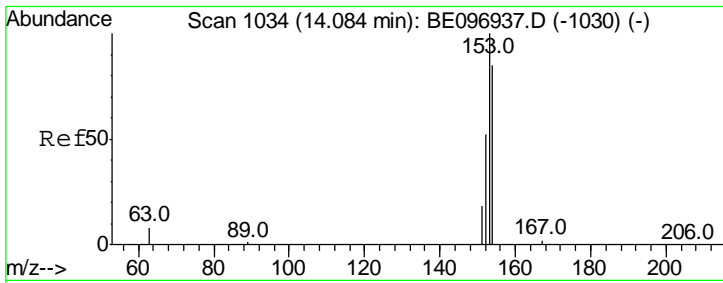


#16
 Acenaphthylene
 Concen: 0.382 ng
 RT: 13.73 min Scan# 1003
 Delta R.T. -0.00 min
 Lab File: BE097031.D
 Acq: 23 Jul 2018 10:55

Tgt Ion: 152 Resp: 6868

Ion	Ratio	Lower	Upper
152	100		
151	19.9	15.7	23.5
153	12.8	10.5	15.7

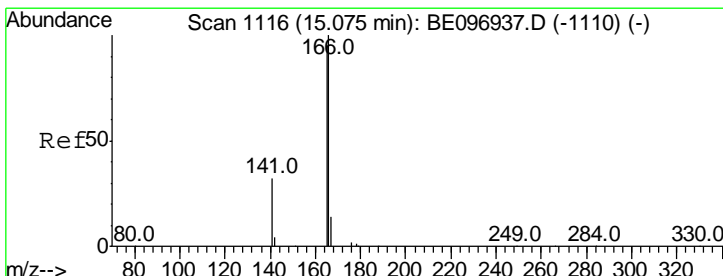
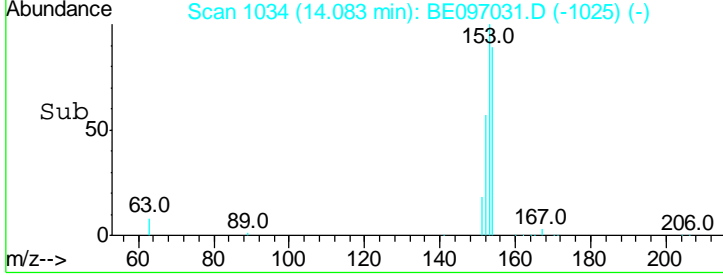
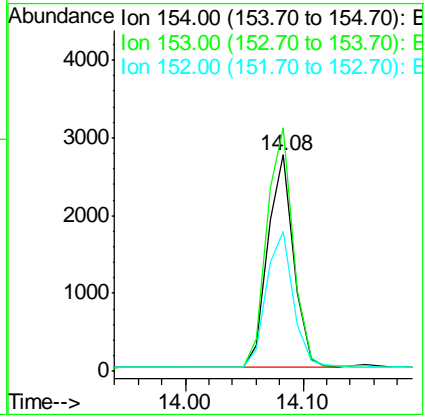
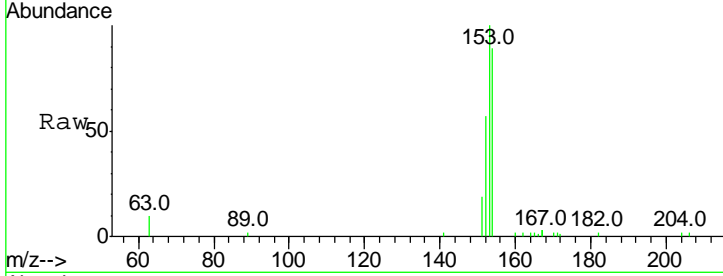




#17
 Acenaphthene
 Concen: 0.370 ng
 RT: 14.08 min Scan# 1034
 Delta R.T. -0.00 min
 Lab File: BE097031.D
 Acq: 23 Jul 2018 10:55

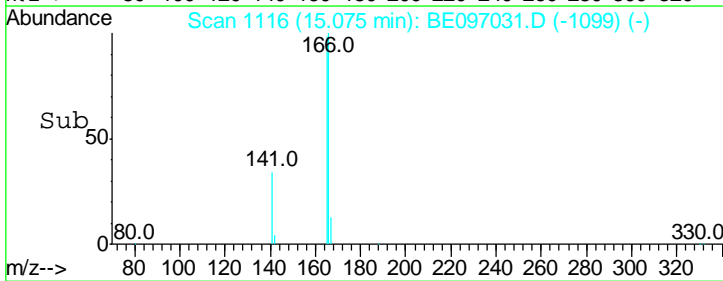
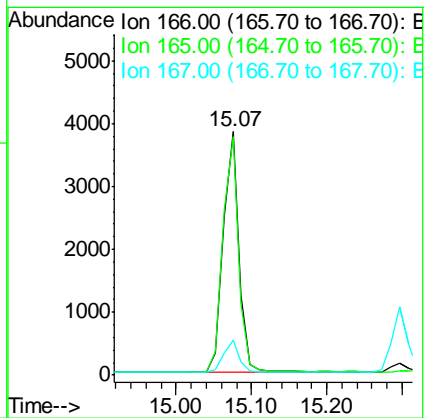
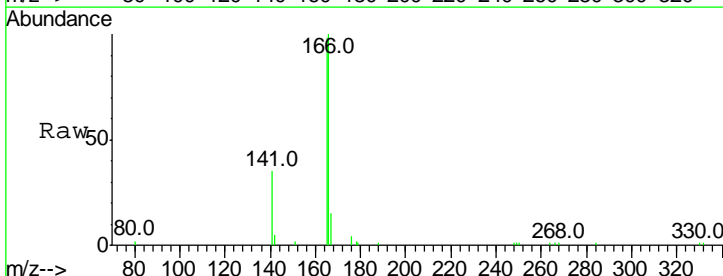
Instrument :
 BNA_E
 ClientSampleId :
 RE104D3-071318MS

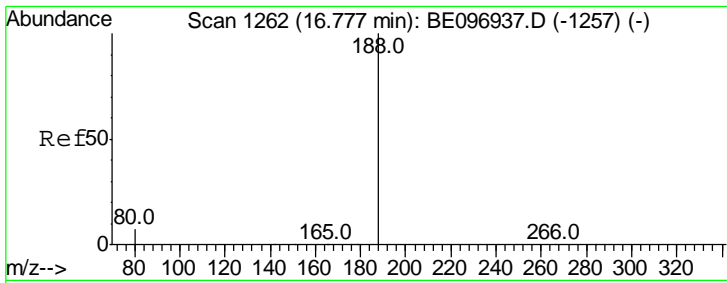
Tgt Ion	Resp	Lower	Upper
154	100		
153	115.7	89.2	133.8
152	67.5	42.0	63.0#



#18
 Fluorene
 Concen: 0.447 ng
 RT: 15.07 min Scan# 1116
 Delta R.T. 0.00 min
 Lab File: BE097031.D
 Acq: 23 Jul 2018 10:55

Tgt Ion	Resp	Lower	Upper
166	100		
165	99.0	77.8	116.6
167	13.3	42.4	63.6#

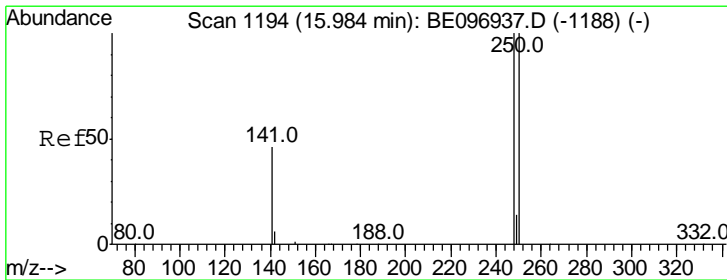
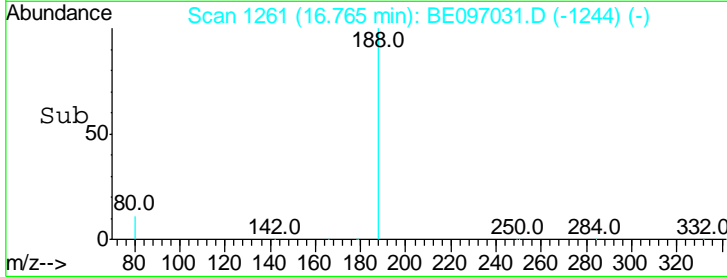
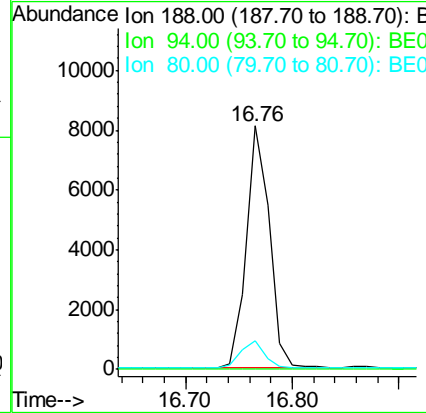
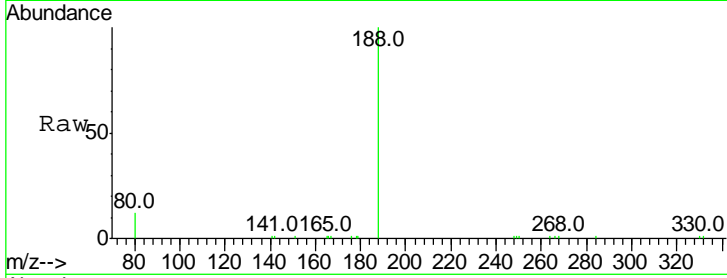




#19
 Phenanthrene-d10
 Concen: 0.400 ng
 RT: 16.76 min Scan# 1261
 Delta R.T. 0.00 min
 Lab File: BE097031.D
 Acq: 23 Jul 2018 10:55

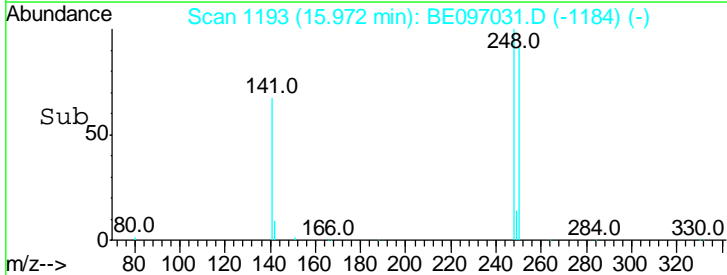
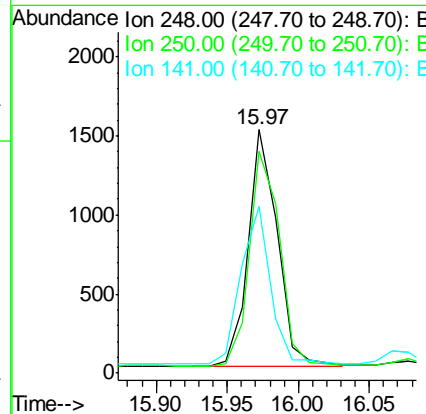
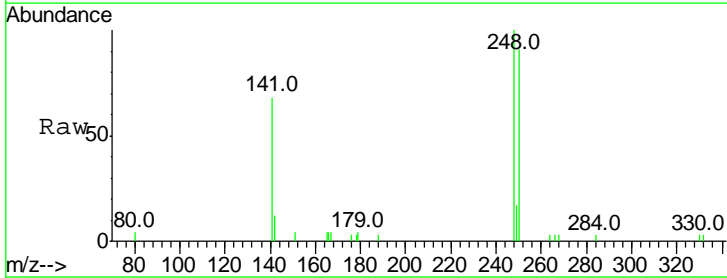
Instrument :
 BNA_E
 ClientSampleId :
 RE104D3-071318MS

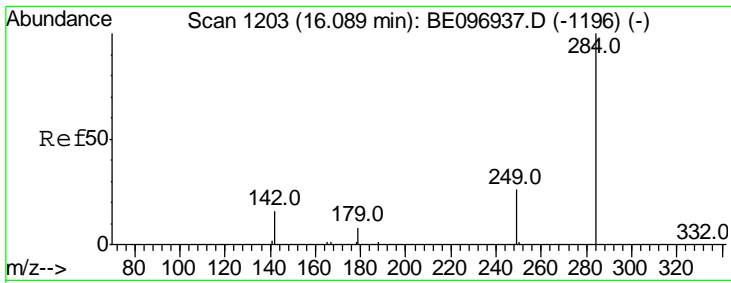
Tgt Ion	Resp	Lower	Upper
188	100		
94	0.0	3.9	5.9#
80	11.7	3.6	5.4#



#20
 4-Bromophenyl-phenylether
 Concen: 0.373 ng
 RT: 15.97 min Scan# 1193
 Delta R.T. 0.00 min
 Lab File: BE097031.D
 Acq: 23 Jul 2018 10:55

Tgt Ion	Resp	Lower	Upper
248	100		
250	91.1	62.7	94.1
141	68.4	48.2	72.2

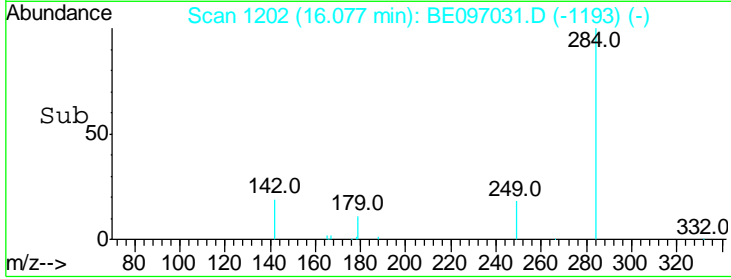
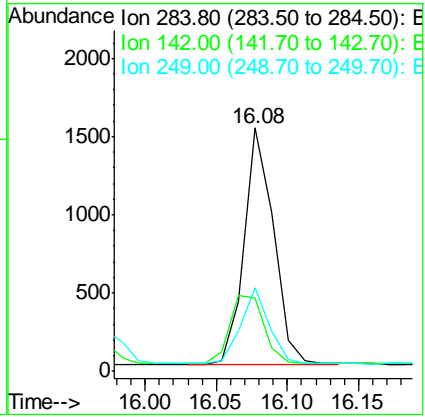
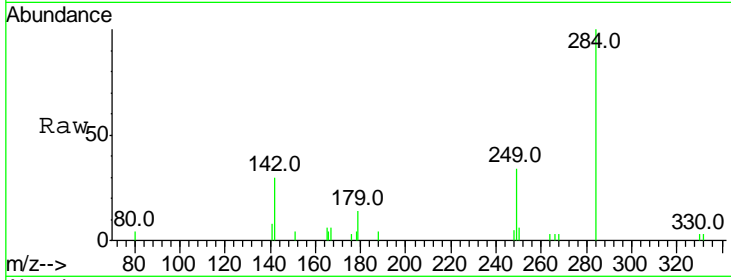




#21
 Hexachlorobenzene
 Concen: 0.343 ng
 RT: 16.08 min Scan# 1202
 Delta R.T. 0.00 min
 Lab File: BE097031.D
 Acq: 23 Jul 2018 10:55

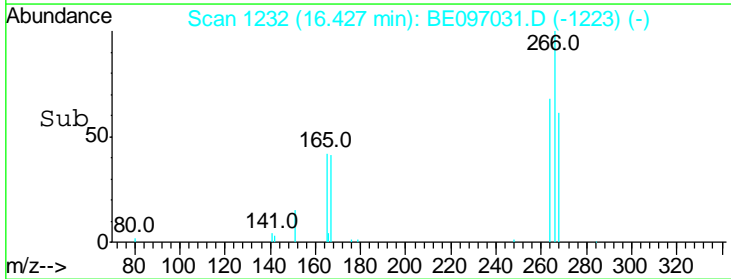
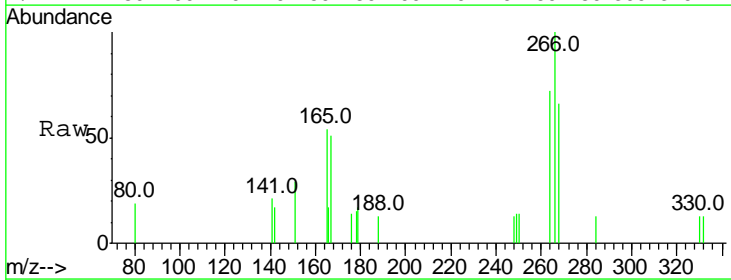
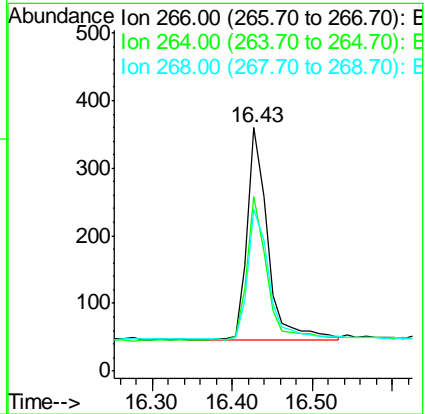
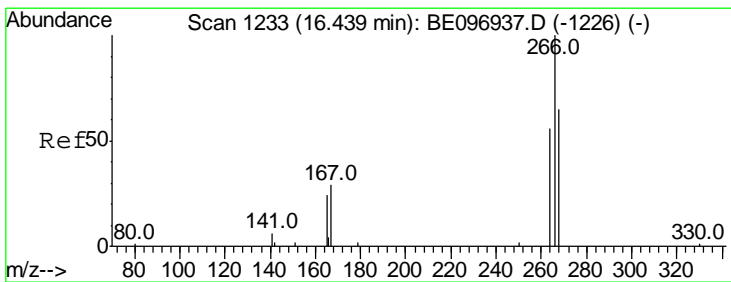
Instrument :
 BNA_E
 ClientSampleId :
 RE104D3-071318MS

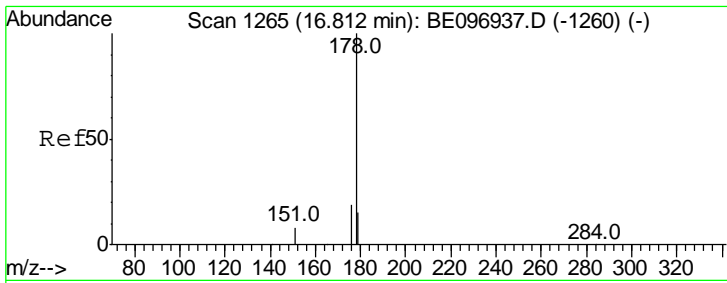
Tgt Ion	Resp	Lower	Upper
284	2163		
284	100		
142	33.4	22.1	33.1#
249	30.8	34.8	52.2#



#22
 Pentachlorophenol
 Concen: 0.585 ng
 RT: 16.43 min Scan# 1232
 Delta R.T. 0.00 min
 Lab File: BE097031.D
 Acq: 23 Jul 2018 10:55

Tgt Ion	Resp	Lower	Upper
266	571		
266	100		
264	71.7	72.5	108.7#
268	66.4	73.8	110.6#

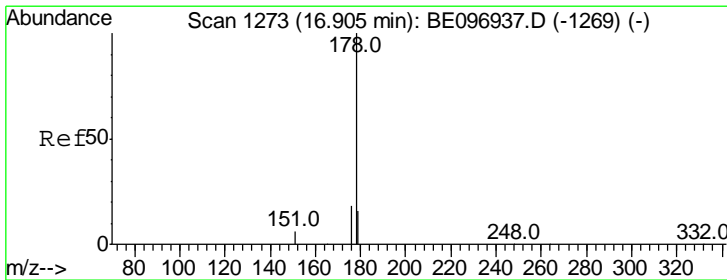
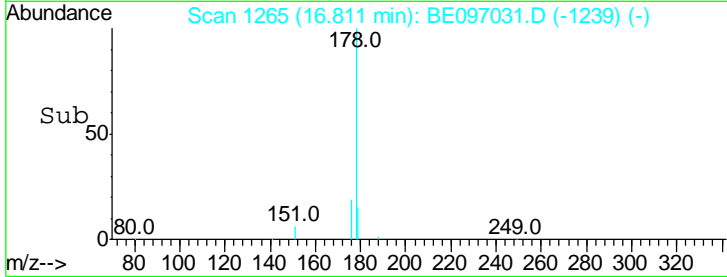
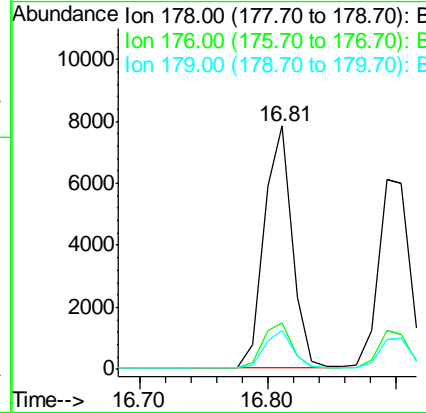
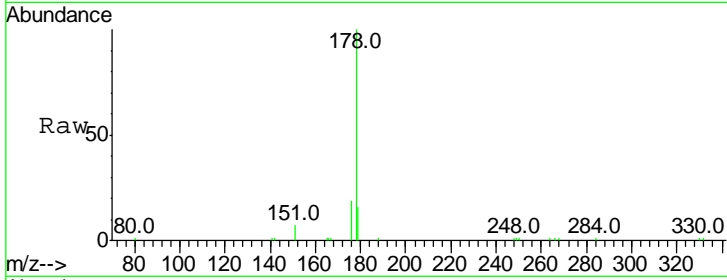




#23
 Phenanthrene
 Concen: 0.415 ng
 RT: 16.81 min Scan# 1265
 Delta R.T. 0.00 min
 Lab File: BE097031.D
 Acq: 23 Jul 2018 10:55

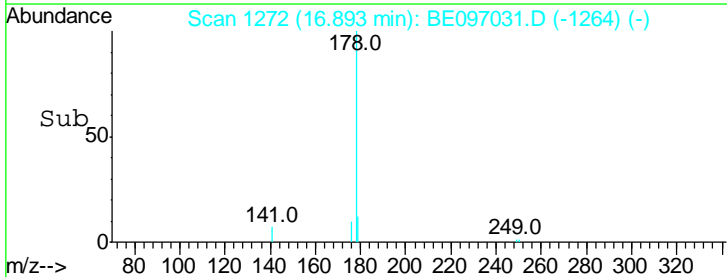
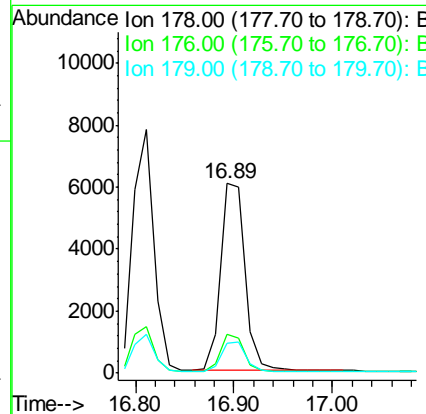
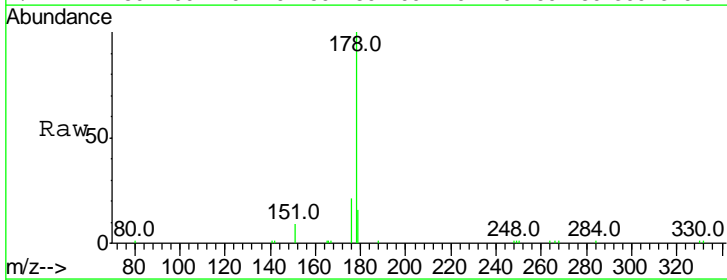
Instrument :
 BNA_E
 ClientSampleId :
 RE104D3-071318MS

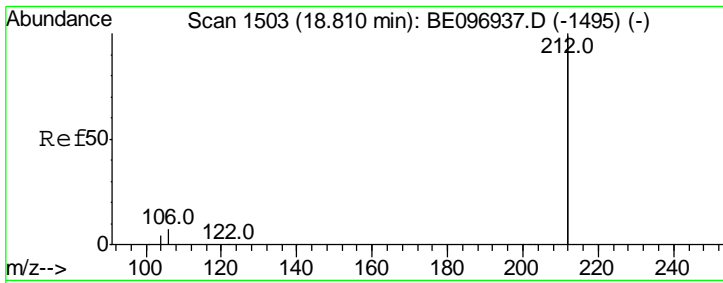
Tgt Ion	Resp	Lower	Upper
178	11955		
176	19.4	15.1	22.7
179	15.3	11.8	17.6



#24
 Anthracene
 Concen: 0.415 ng
 RT: 16.89 min Scan# 1272
 Delta R.T. -0.01 min
 Lab File: BE097031.D
 Acq: 23 Jul 2018 10:55

Tgt Ion	Resp	Lower	Upper
178	10404		
176	18.8	12.8	19.2
179	15.5	13.0	19.6



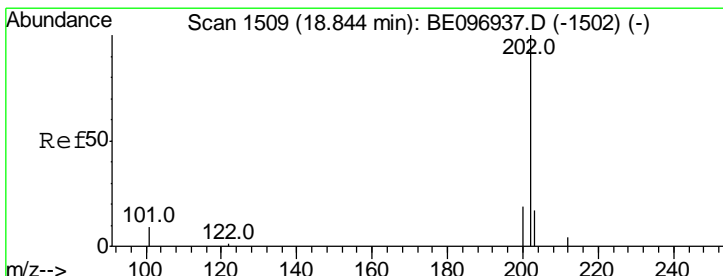
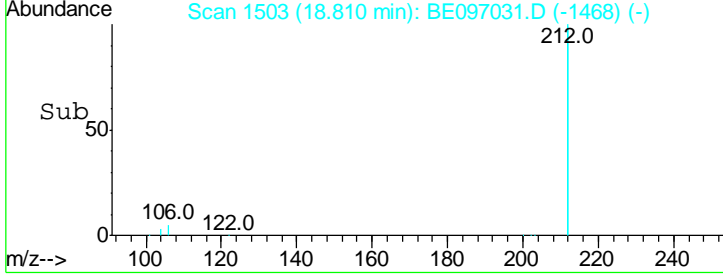
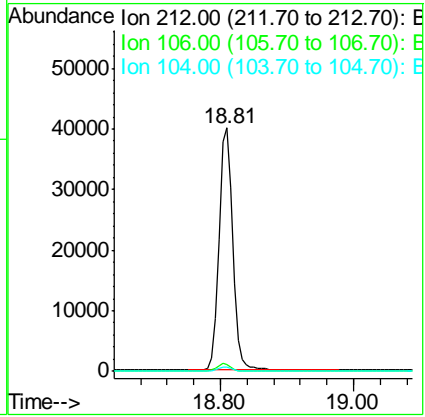
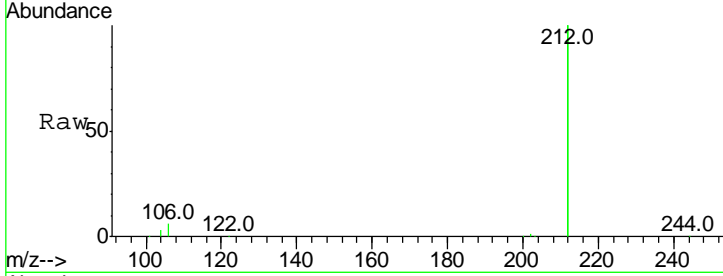


#25
 Fluoranthene-d10
 Concen: 0.547 ng
 RT: 18.81 min Scan# 1503
 Delta R.T. 0.00 min
 Lab File: BE097031.D
 Acq: 23 Jul 2018 10:55

Instrument :
 BNA_E
ClientSampleId :
 RE104D3-071318MS

Tgt Ion: 212 Resp: 57212

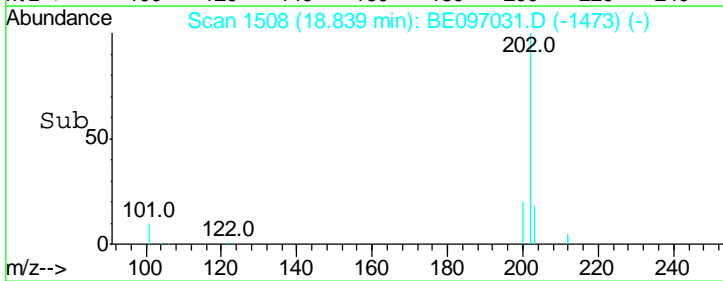
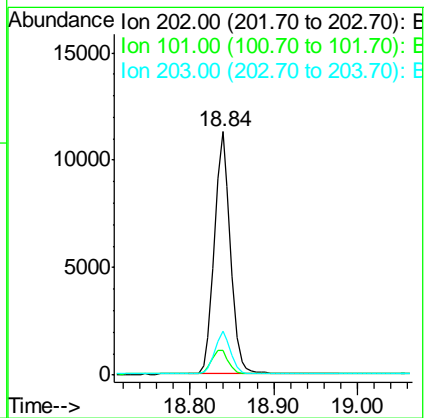
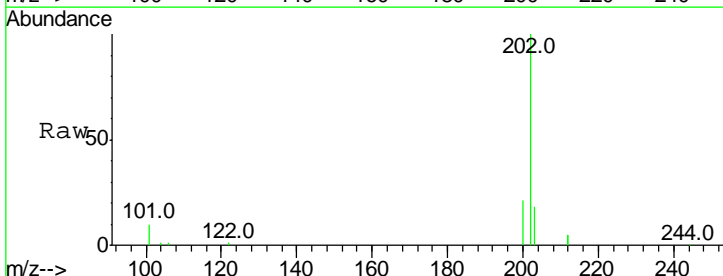
Ion	Ratio	Lower	Upper
212	100		
106	3.0	2.8	4.2
104	1.7	1.6	2.4

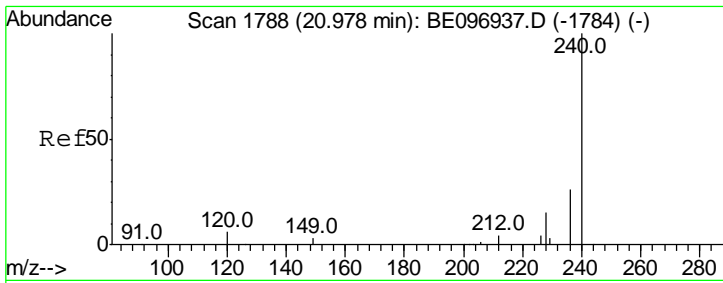


#26
 Fluoranthene
 Concen: 0.497 ng
 RT: 18.84 min Scan# 1508
 Delta R.T. 0.00 min
 Lab File: BE097031.D
 Acq: 23 Jul 2018 10:55

Tgt Ion: 202 Resp: 15102

Ion	Ratio	Lower	Upper
202	100		
101	10.7	9.8	14.8
203	17.2	13.7	20.5



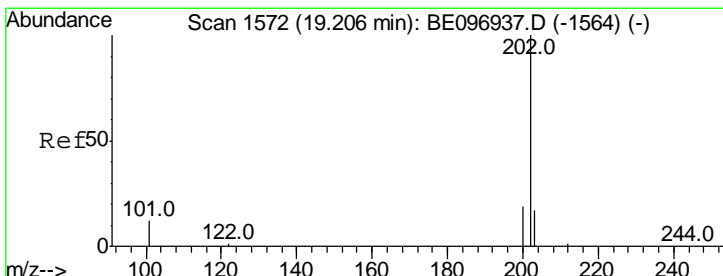
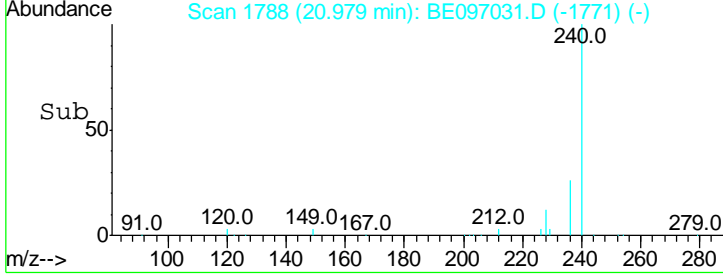
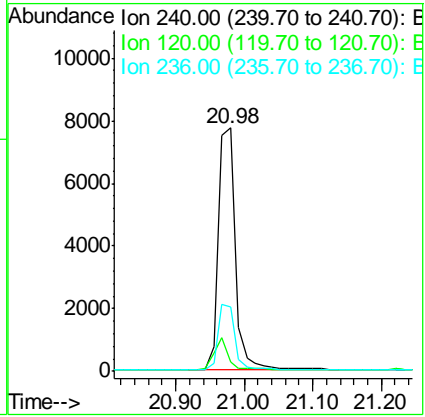
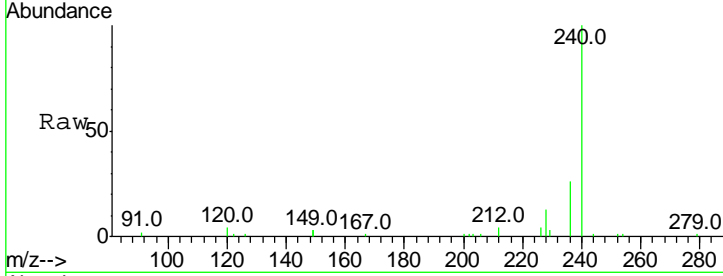


#27
 Chrysene-d12
 Concen: 0.400 ng
 RT: 20.98 min Scan# 1788
 Delta R.T. 0.00 min
 Lab File: BE097031.D
 Acq: 23 Jul 2018 10:55

Instrument : BNA_E
 ClientSampleId : RE104D3-071318MS

Tgt Ion: 240 Resp: 13407

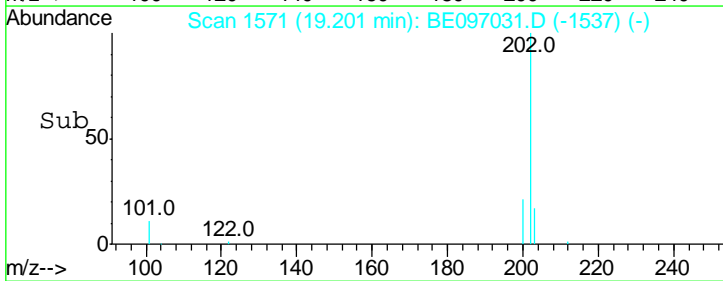
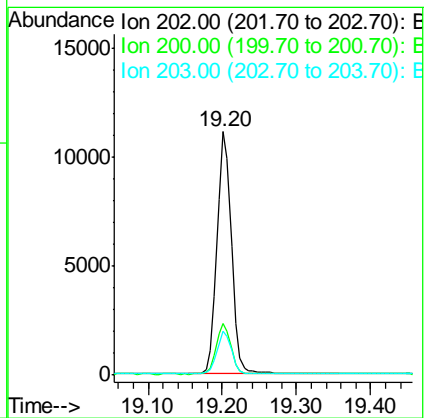
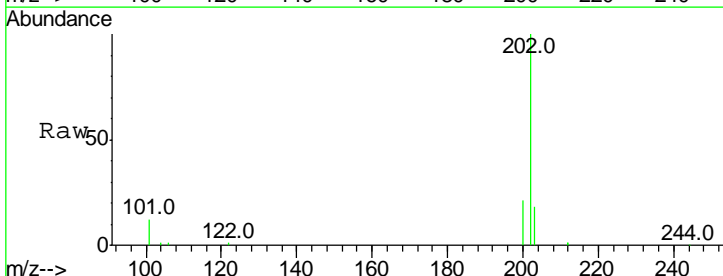
Ion	Ratio	Lower	Upper
240	100		
120	3.9	5.5	8.3#
236	26.4	20.7	31.1

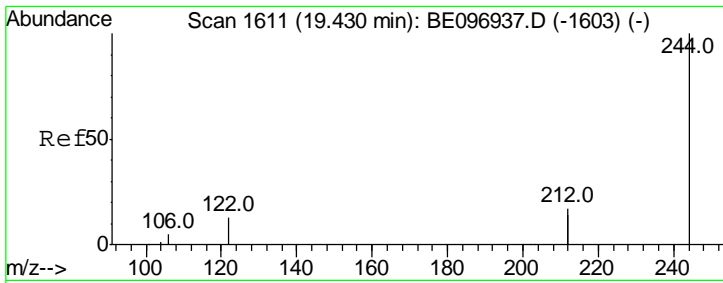


#28
 Pyrene
 Concen: 0.384 ng
 RT: 19.20 min Scan# 1571
 Delta R.T. -0.01 min
 Lab File: BE097031.D
 Acq: 23 Jul 2018 10:55

Tgt Ion: 202 Resp: 15211

Ion	Ratio	Lower	Upper
202	100		
200	21.1	16.6	25.0
203	17.8	13.8	20.8



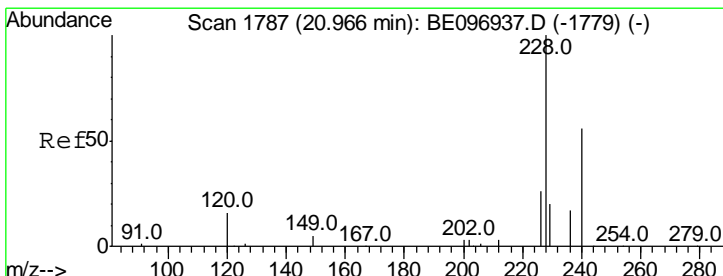
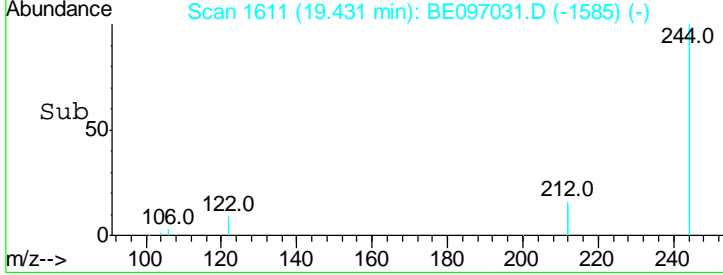
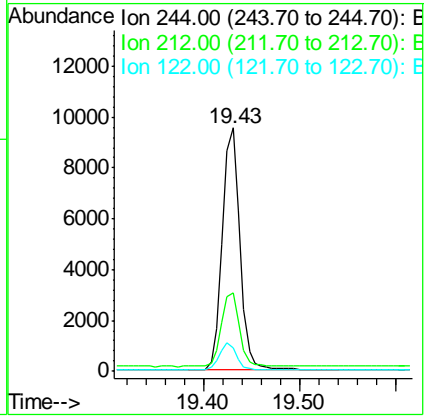
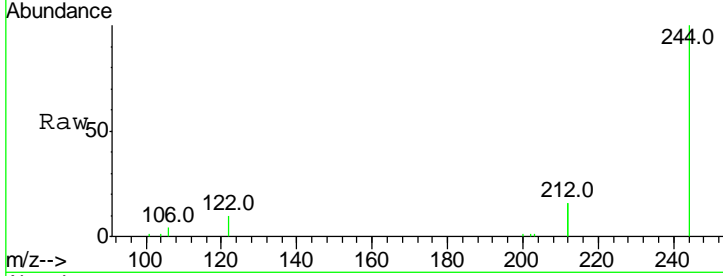


#29
 Terphenyl-d14
 Concen: 0.473 ng
 RT: 19.43 min Scan# 1611
 Delta R.T. 0.00 min
 Lab File: BE097031.D
 Acq: 23 Jul 2018 10:55

Instrument :
 BNA_E
 ClientSampleId :
 RE104D3-071318MS

Tgt Ion: 244 Resp: 12243

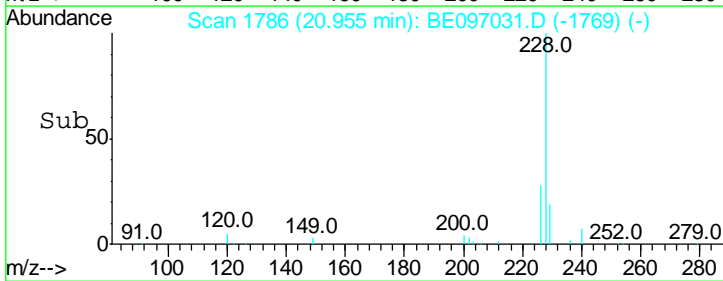
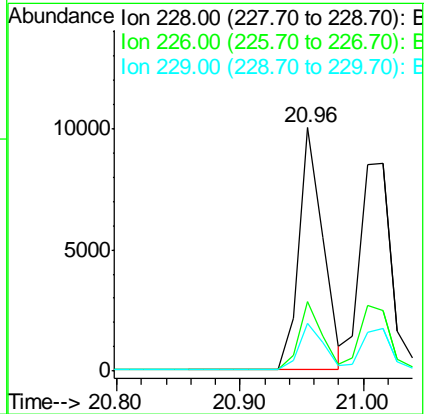
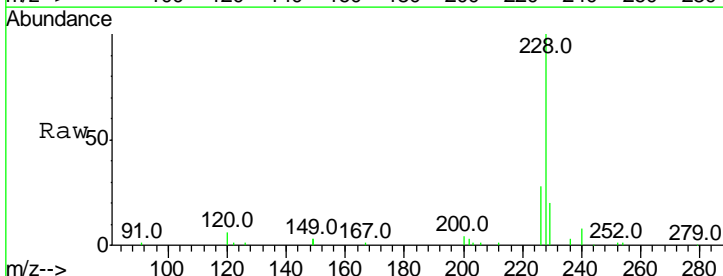
Ion	Ratio	Lower	Upper
244	100		
212	32.0	25.4	38.0
122	9.7	8.1	12.1

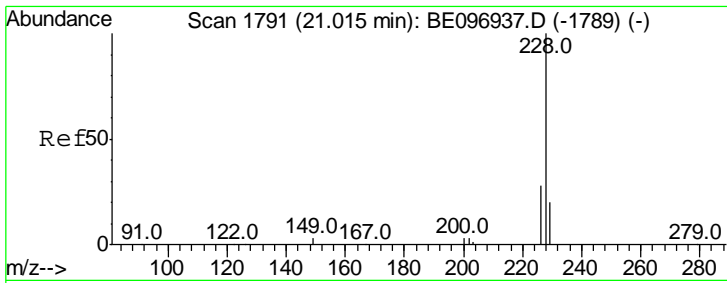


#30
 Benzo(a)anthracene
 Concen: 0.423 ng
 RT: 20.96 min Scan# 1786
 Delta R.T. 0.00 min
 Lab File: BE097031.D
 Acq: 23 Jul 2018 10:55

Tgt Ion: 228 Resp: 13489

Ion	Ratio	Lower	Upper
228	100		
226	28.3	24.0	36.0
229	19.7	16.0	24.0

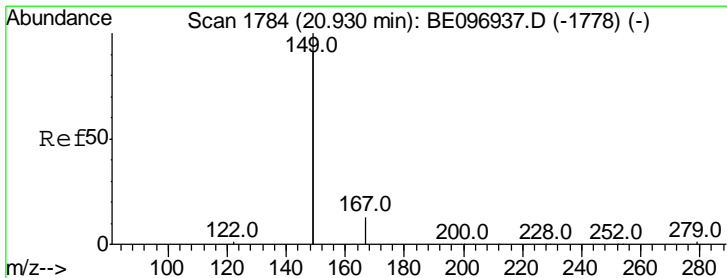
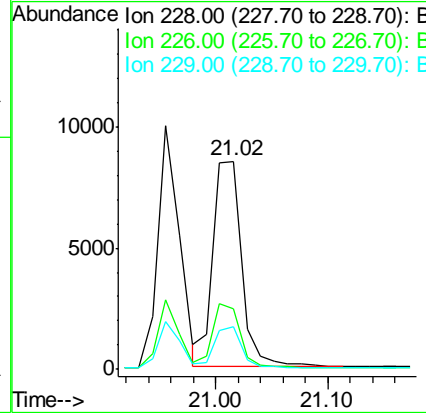
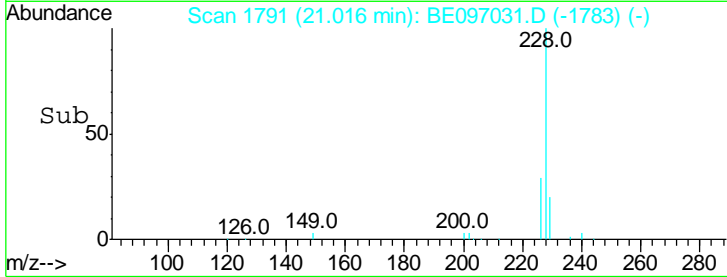
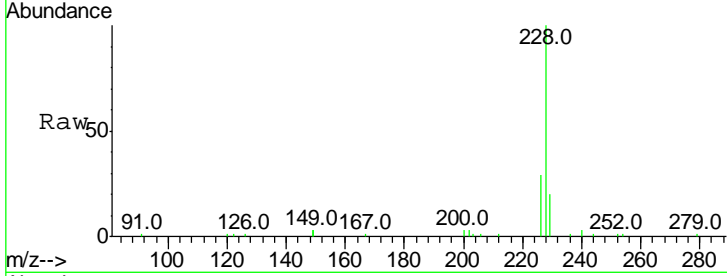




#31
 Chrysene
 Concen: 0.415 ng
 RT: 21.02 min Scan# 1791
 Delta R.T. 0.00 min
 Lab File: BE097031.D
 Acq: 23 Jul 2018 10:55

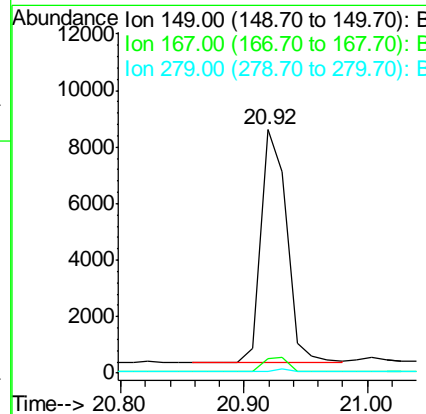
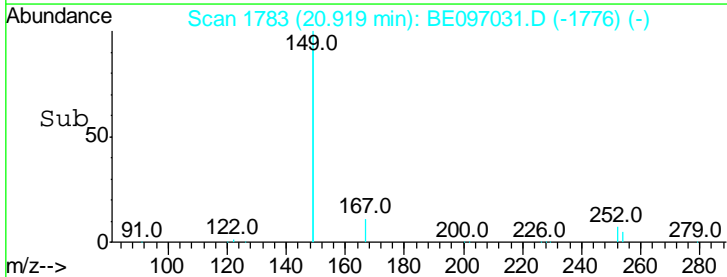
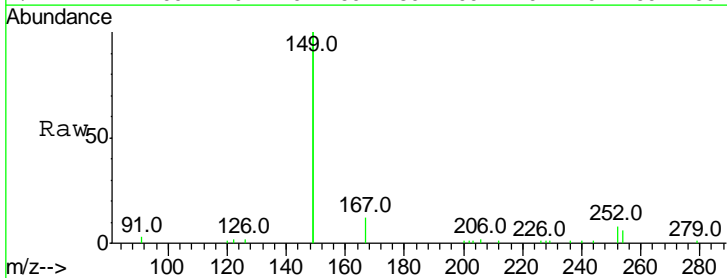
Instrument :
 BNA_E
 ClientSampled :
 RE104D3-071318MS

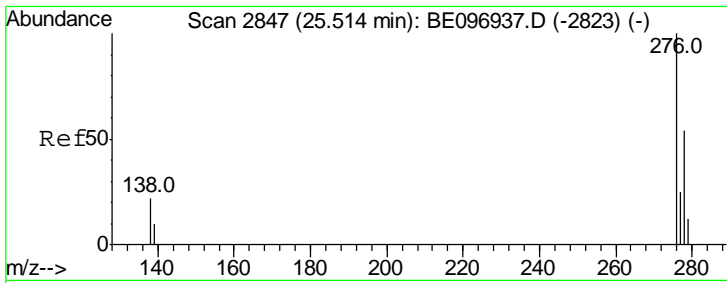
Tgt Ion	Resp	Lower	Upper
228	100		
226	29.3	24.0	36.0
229	20.4	16.0	24.0



#32
 Bis(2-ethylhexyl)phthalate
 Concen: 0.381 ng
 RT: 20.92 min Scan# 1783
 Delta R.T. -0.01 min
 Lab File: BE097031.D
 Acq: 23 Jul 2018 10:55

Tgt Ion	Resp	Lower	Upper
149	100		
167	6.1	5.4	8.0
279	0.9	0.7	1.1

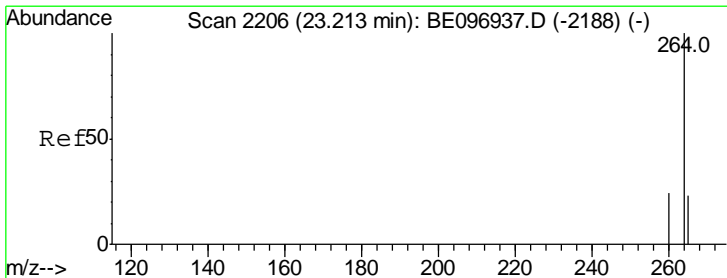
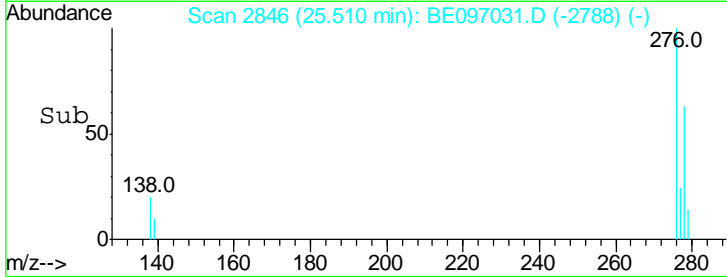
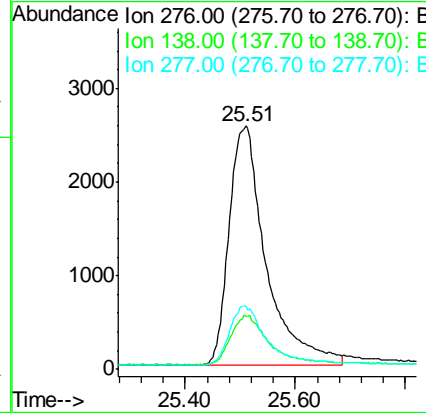
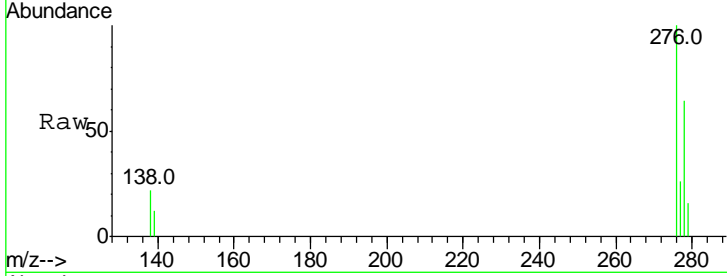




#33
 Indeno(1,2,3-cd)pyrene
 Concen: 0.458 ng
 RT: 25.51 min Scan# 2846
 Delta R.T. 0.01 min
 Lab File: BE097031.D
 Acq: 23 Jul 2018 10:55

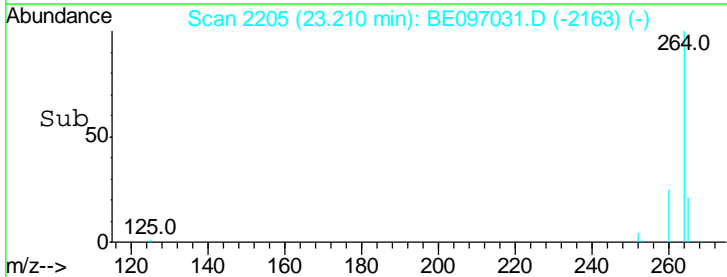
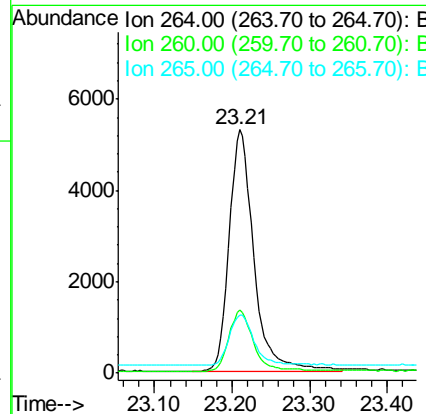
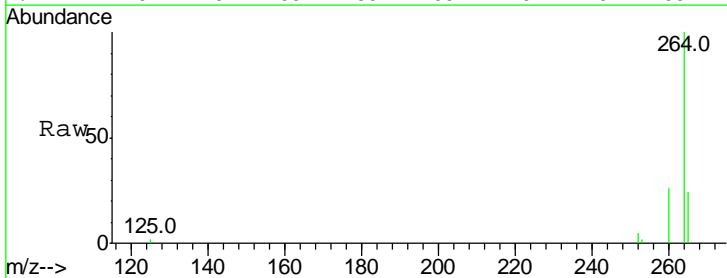
Instrument :
 BNA_E
 ClientSampleId :
 RE104D3-071318MS

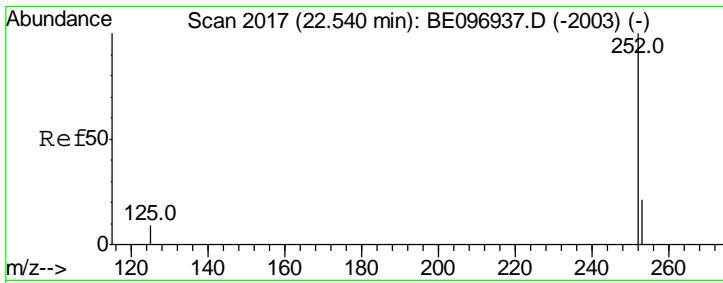
Tgt Ion	Resp	Lower	Upper
276	11945		
276	100		
138	21.1	22.5	33.7#
277	24.3	19.9	29.9



#34
 Perylene-d12
 Concen: 0.400 ng
 RT: 23.21 min Scan# 2205
 Delta R.T. -0.00 min
 Lab File: BE097031.D
 Acq: 23 Jul 2018 10:55

Tgt Ion	Resp	Lower	Upper
264	11647		
264	100		
260	25.8	20.5	30.7
265	24.0	22.8	34.2



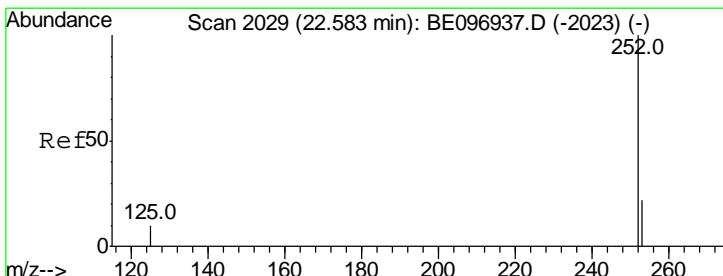
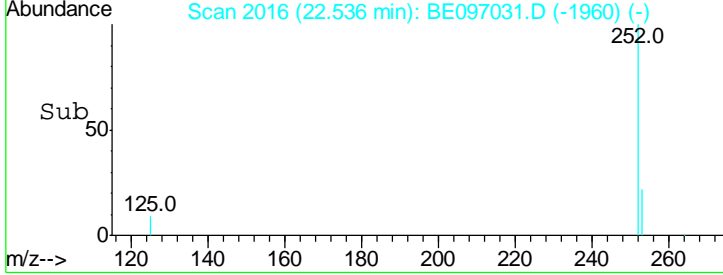
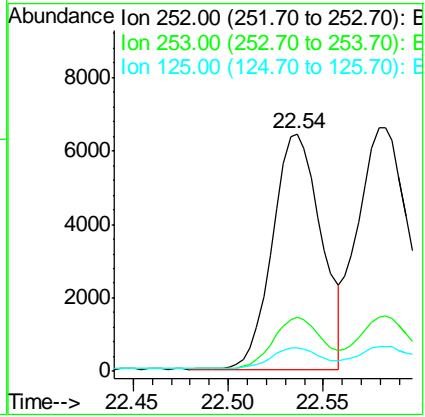
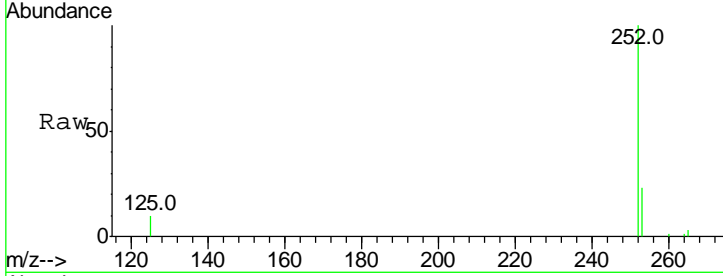


#35
 Benzo(b)fluoranthene
 Concen: 0.385 ng
 RT: 22.54 min Scan# 2016
 Delta R.T. -0.00 min
 Lab File: BE097031.D
 Acq: 23 Jul 2018 10:55

Instrument :
 BNA_E
 ClientSampleId :
 RE104D3-071318MS

Tgt Ion: 252 Resp: 11435

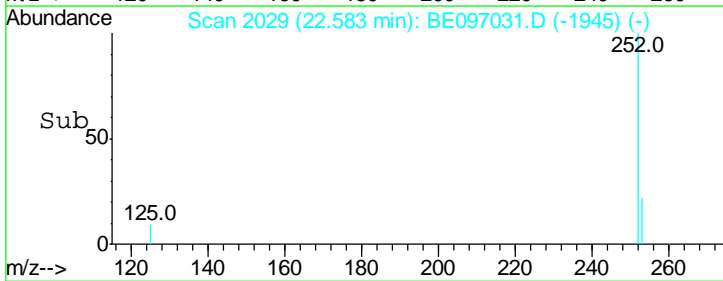
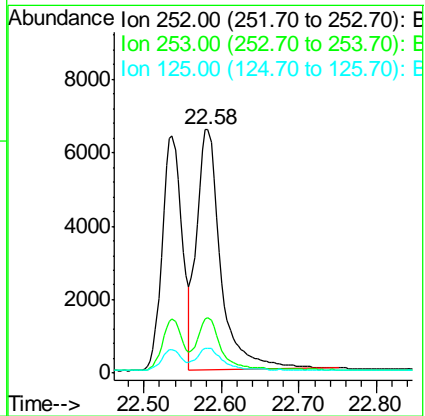
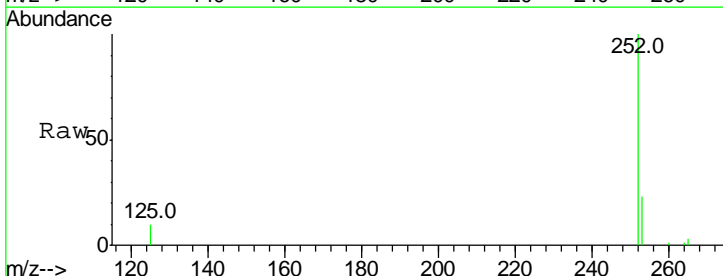
Ion	Ratio	Lower	Upper
252	100		
253	22.6	20.0	30.0
125	9.7	16.0	24.0

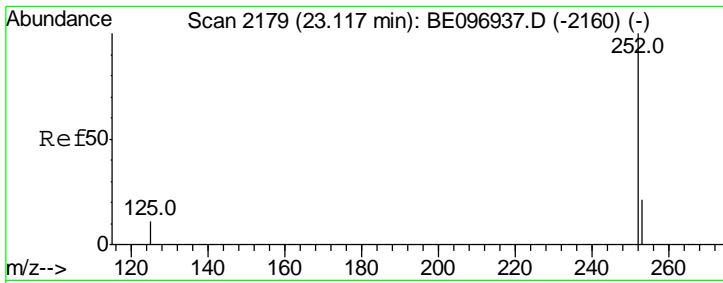


#36
 Benzo(k)fluoranthene
 Concen: 0.400 ng
 RT: 22.58 min Scan# 2029
 Delta R.T. -0.00 min
 Lab File: BE097031.D
 Acq: 23 Jul 2018 10:55

Tgt Ion: 252 Resp: 14126

Ion	Ratio	Lower	Upper
252	100		
253	22.7	16.0	24.0
125	10.2	8.0	12.0



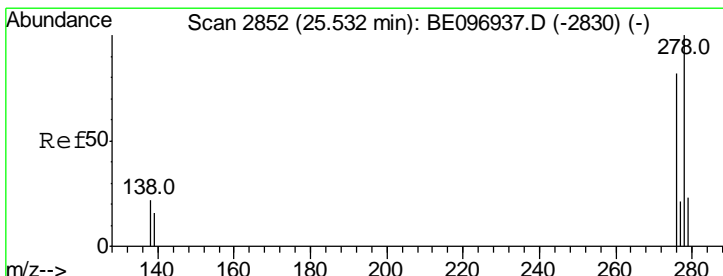
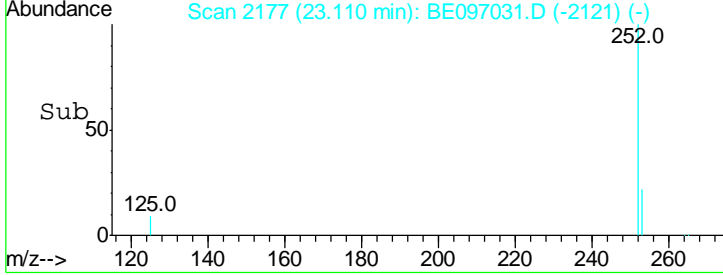
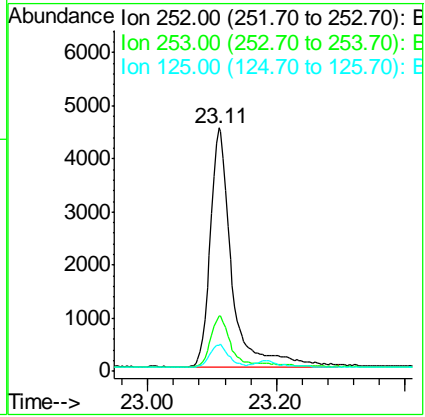
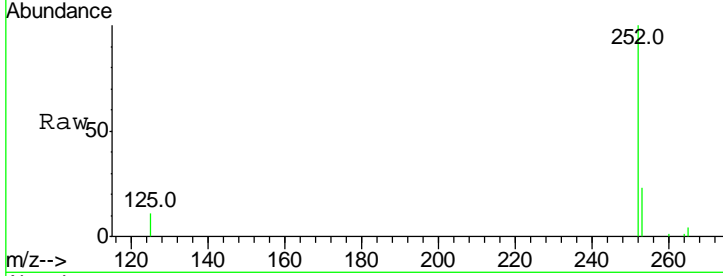


#37
 Benzo(a)pyrene
 Concen: 0.412 ng
 RT: 23.11 min Scan# 2177
 Delta R.T. -0.00 min
 Lab File: BE097031.D
 Acq: 23 Jul 2018 10:55

Instrument :
 BNA_E
 ClientSampleId :
 RE104D3-071318MS

Tgt Ion: 252 Resp: 10500

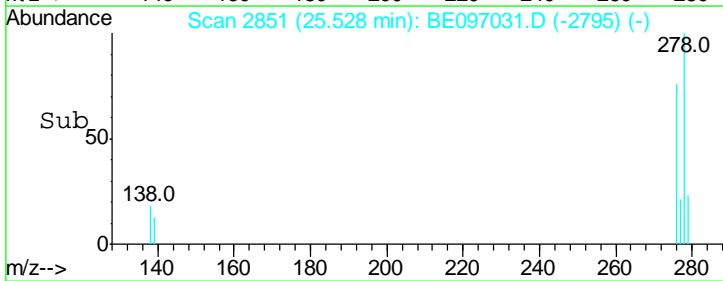
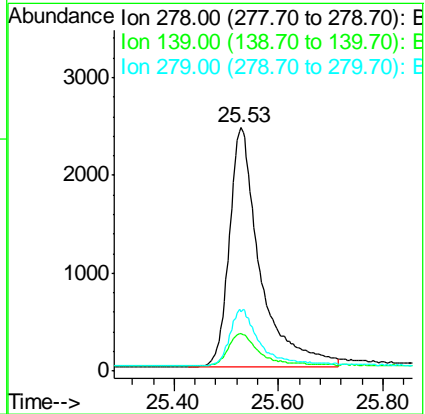
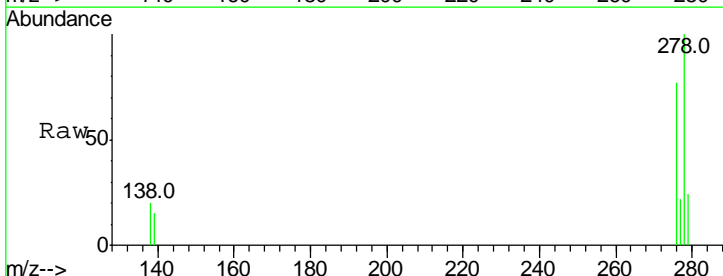
Ion	Ratio	Lower	Upper
252	100		
253	23.0	16.0	24.0
125	10.9	12.0	18.0

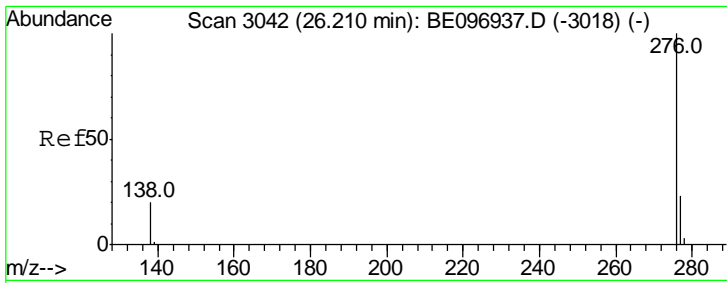


#38
 Dibenzo(a,h)anthracene
 Concen: 0.461 ng
 RT: 25.53 min Scan# 2851
 Delta R.T. 0.00 min
 Lab File: BE097031.D
 Acq: 23 Jul 2018 10:55

Tgt Ion: 278 Resp: 9972

Ion	Ratio	Lower	Upper
278	100		
139	15.3	16.0	24.0
279	24.3	20.0	30.0





#39
 Benzo(a,h,i)perylene
 Concen: 0.417 ng
 RT: 26.20 min Scan# 3040
 Delta R.T. 0.00 min
 Lab File: BE097031.D
 Acq: 23 Jul 2018 10:55

Instrument :
 BNA_E
 ClientSampleId :
 RE104D3-071318MS

Tot Ion	276	Resp	10090
Ion	Ratio	Lower	Upper
276	100		
277	25.3	16.0	24.0#
138	19.4	20.0	30.0#

