

Data Path : Z:\SVOASRV\HPCHEM1\BNA E\DATA\BE080218\
 Data File : BE097162.D
 Acq On : 2 Aug 2018 22:00
 Operator : SJ/JU
 Sample : J4171-04
 Misc :
 ALS Vial : 19 Sample Multiplier: 1

Instrument :
 BNA_E
ClientSampled :
 JJ1J2

Manual Integrations
APPROVED
 Sohil
 8/3/2018 5:55:10 PM

Quant Time: Aug 03 00:14:38 2018
 Quant Method : Z:\SVOASRV\HPCHEM1\BNA E\METHODS\SOM-EPA-SIM-BE080118.M
 Quant Title : ASP BNA STANDARDS FOR 5 POINT CALIBRATION
 QLast Update : Thu Aug 02 14:49:13 2018
 Response via : Initial Calibration

Internal Standards	R.T.	QIon	Response	Conc	Units	Dev(Min)
1) 1,4-Dichlorobenzene-d4	7.39	152	1287	0.40	ng/ul	0.00
2) Naphthalene-d8	10.13	136	6625	0.40	ng/ul	0.00
6) Acenaphthene-d10	14.02	164	4233	0.40	ng/ul	0.00
10) Phenanthrene-d10	16.77	188	10473m	0.40	ng/ul	0.00
16) Chrysene-d12	20.97	240	11044m	0.40	ng/ul	0.00
20) Perylene-d12	23.20	264	9829m	0.40	ng/ul	0.00
System Monitoring Compounds						
4) 2-Methylnaphthalene-d10	11.73	152	3925	0.37	ng/ul	0.00
14) Fluoranthene-d10	18.81	212	11546m	0.32	ng/ul	0.00
Target Compounds						
3) Naphthalene	10.18	128	796	0.050	ng/ul#	83
12) Phenanthrene	16.81	178	656m	0.025	ng/ul	

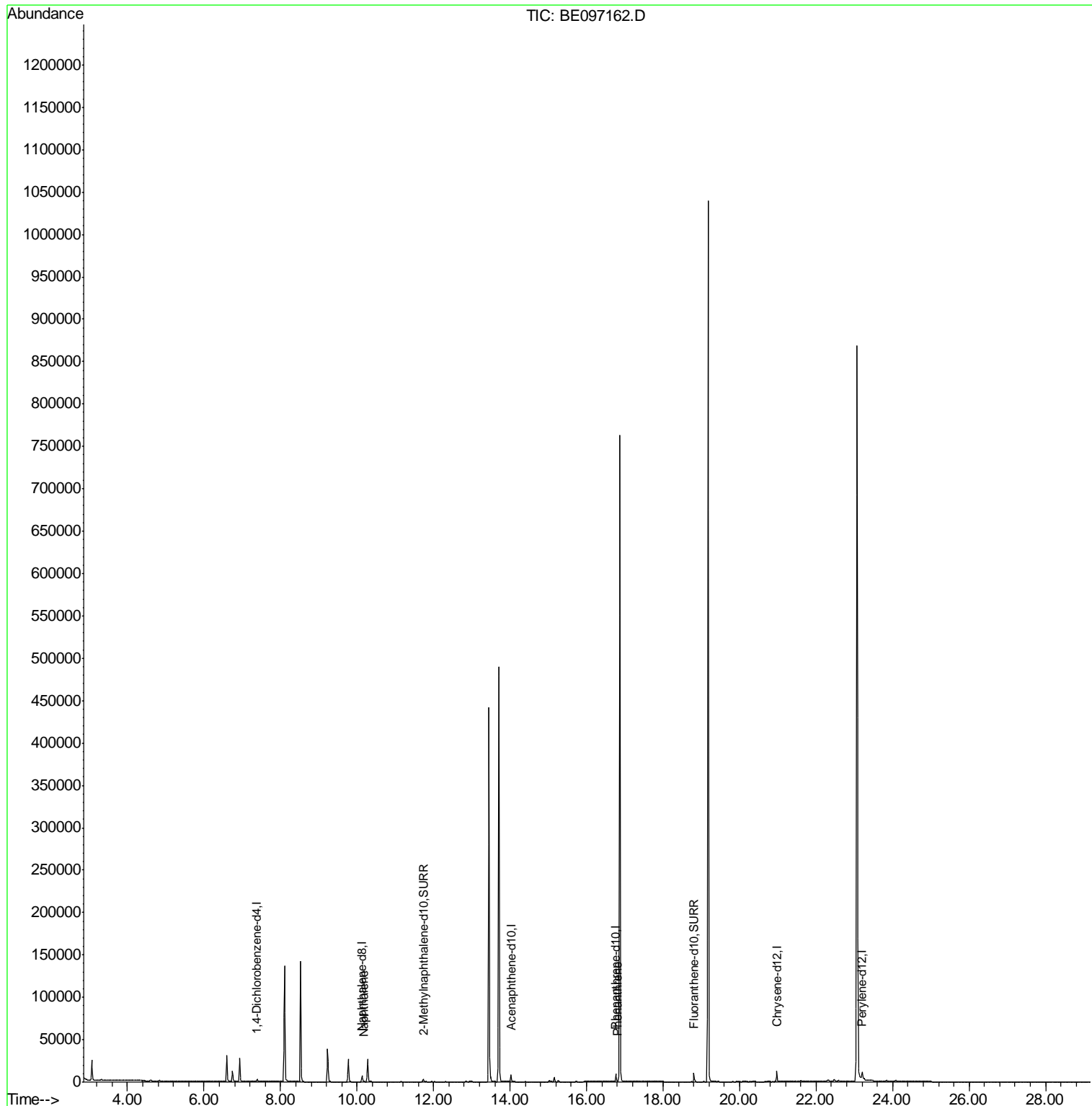
(#) = qualifier out of range (m) = manual integration (+) = signals summed

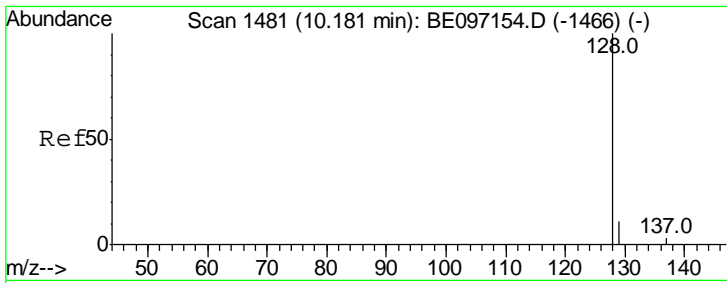
Data Path : Z:\SVOASRV\HPCHEM1\BNA E\DATA\BE080218\
 Data File : BE097162.D
 Acq On : 2 Aug 2018 22:00
 Operator : SJ/JU
 Sample : J4171-04
 Misc :
 ALS Vial : 19 Sample Multiplier: 1

Instrument :
 BNA_E
ClientSampled :
 JJ1J2

Manual Integrations
APPROVED
 Sohil
 8/3/2018 5:55:10 PM

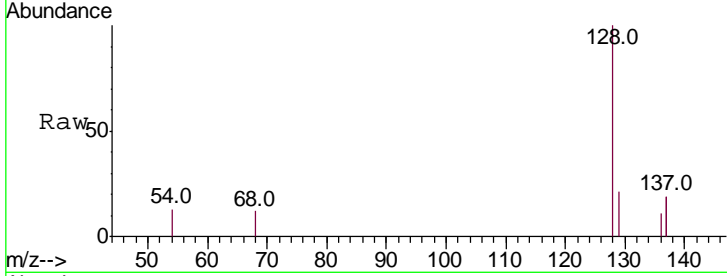
Quant Time: Aug 03 00:14:38 2018
 Quant Method : Z:\SVOASRV\HPCHEM1\BNA E\METHODS\SOM-EPA-SIM-BE080118.M
 Quant Title : ASP BNA STANDARDS FOR 5 POINT CALIBRATION
 QLast Update : Thu Aug 02 14:49:13 2018
 Response via : Initial Calibration





#3
 Naphthalene
 Concen: 0.050 ng/ul
 RT: 10.18 min Scan# 1482
 Delta R.T. -0.00 min
 Lab File: BE097162.D
 Acq: 2 Aug 2018 22:00

Instrument :
 BNA_E
ClientSampled :
 JJ1J2

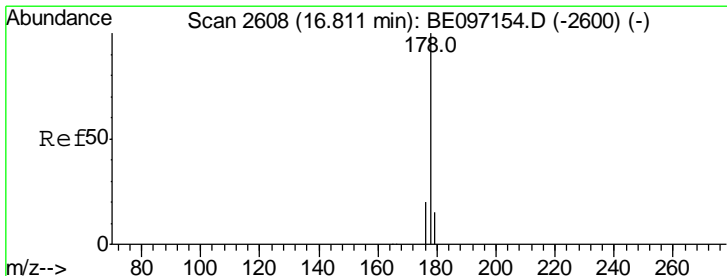
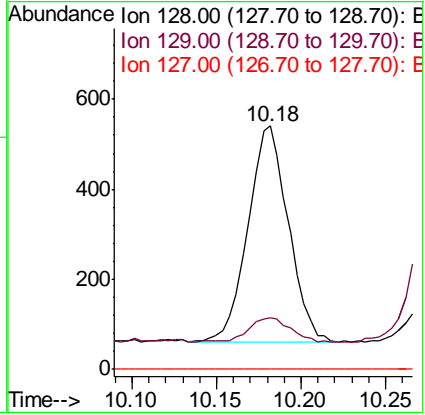
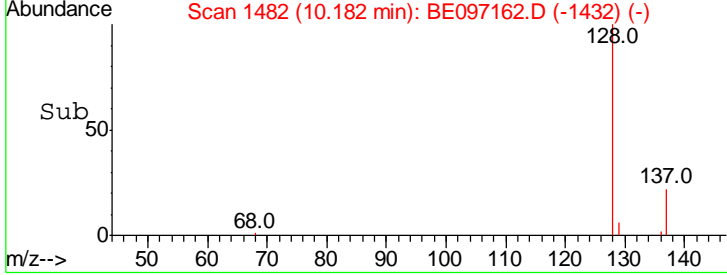


Tgt Ion: 128 Resp: 796

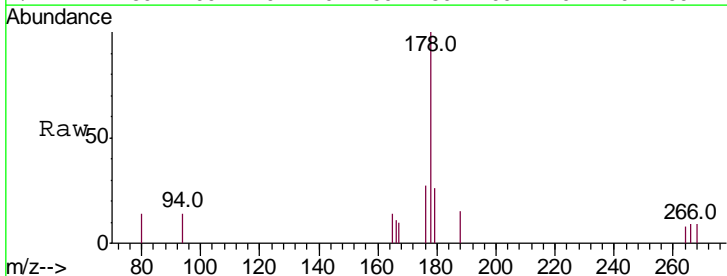
Ion	Ratio	Lower	Upper
128	100		
129	21.1	11.3	16.9#
127	0.0	4.0	6.0#

Manual Integrations
APPROVED

Sohil
 8/3/2018 5:55:10 PM



#12
 Phenanthrene
 Concen: 0.025 ng/ul m
 RT: 16.81 min Scan# 2609
 Delta R.T. 0.00 min
 Lab File: BE097162.D
 Acq: 2 Aug 2018 22:00



Tgt Ion: 178 Resp: 656

Ion	Ratio	Lower	Upper
178	100		
179	26.5	18.4	27.6
176	27.2	13.6	20.4#

