

Data Path : Z:\svoasrv\HPCHEM1\BNA E\Data\BE092319\
 Data File : BE100546.D
 Acq On : 23 Sep 2019 19:22
 Operator : HP/JU
 Sample : K4930-03
 Misc :
 ALS Vial : 13 Sample Multiplier: 1

Quant Time: Sep 24 07:10:34 2019

Quant Method : Z:\SVOASRV\HPCHEM1\BNA E\METHODS\8270-SIM-BE092019.M

Quant Title : ASP BNA STANDARDS FOR 5 POINT CALIBRATION

QLast Update : Fri Sep 20 18:26:17 2019

Response via : Initial Calibration

Internal Standards	R.T.	QIon	Response	Conc	Units	Dev(Min)
1) 1,4-Dichlorobenzene-d4	7.86	152	6532	0.40	ng	0.00
7) Naphthalene-d8	10.65	136	29376	0.40	ng	0.00
13) Acenaphthene-d10	14.48	164	16694	0.40	ng	0.00
19) Phenanthrene-d10	17.20	188	37887	0.40	ng	0.00
27) Chrysene-d12	21.37	240	41898	0.40	ng	0.00
34) Perylene-d12	23.83	264	47075	0.40	ng	0.00

System Monitoring Compounds

4) 2-Fluorophenol	5.44	112	2761	0.18	ng	0.00
5) Phenol-d6	7.02	99	2052	0.10	ng	0.00
8) Nitrobenzene-d5	9.00	82	7279	0.43	ng	0.00
11) 2-Methylnaphthalene-d10	12.24	152	17957	0.41	ng	0.00
14) 2,4,6-Tribromophenol	15.96	330	1218	0.45	ng	0.00
15) 2-Fluorobiphenyl	13.12	172	24351	0.41	ng	0.00
25) Fluoranthene-d10	19.23	212	191327	0.42	ng	0.00
29) Terphenyl-d14	19.82	244	49453	0.50	ng	0.00

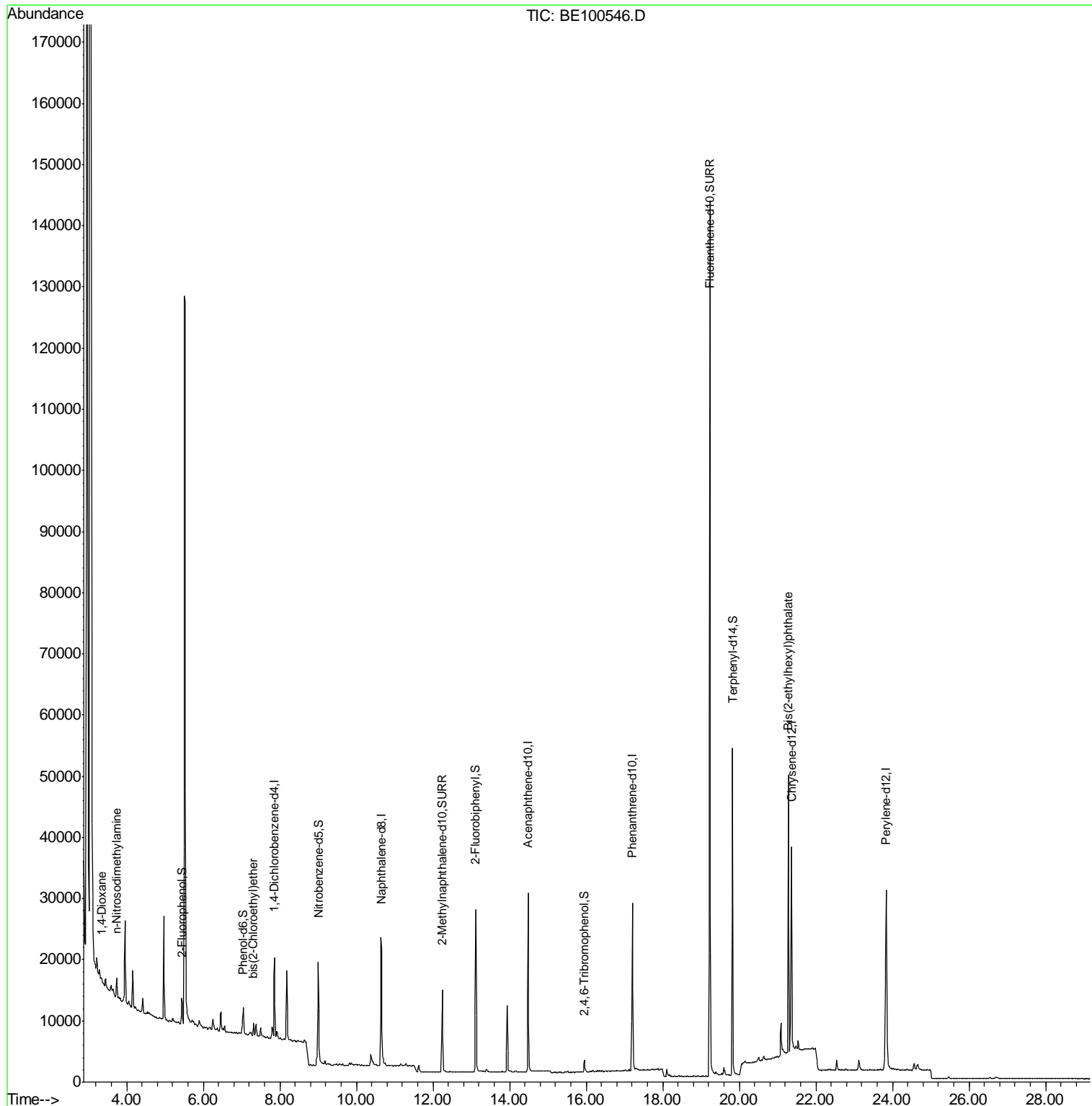
Target Compounds

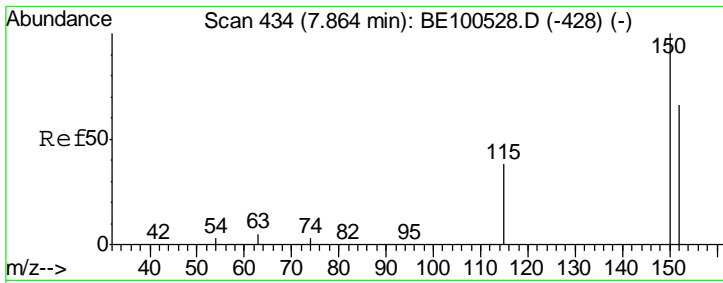
					Qvalue
2) 1,4-Dioxane	3.35	88	403	0.043 ng	# 68
3) n-Nitrosodimethylamine	3.74	42	216	0.039 ng	# 1
6) bis(2-Chloroethyl)ether	7.31	93	2778	0.131 ng	# 1
32) Bis(2-ethylhexyl)phthalate	21.28	149	52673	0.437 ng	100

(#) = qualifier out of range (m) = manual integration (+) = signals summed

Data Path : Z:\svoasrv\HPCHEM1\BNA E\Data\BE092319\
 Data File : BE100546.D
 Acq On : 23 Sep 2019 19:22
 Operator : HP/JU
 Sample : K4930-03
 Misc :
 ALS Vial : 13 Sample Multiplier: 1

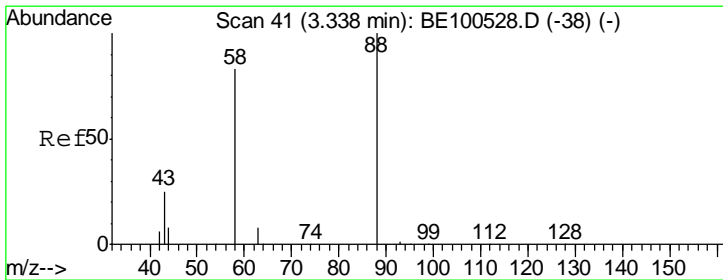
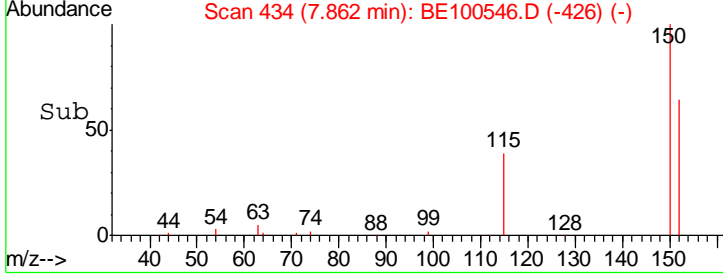
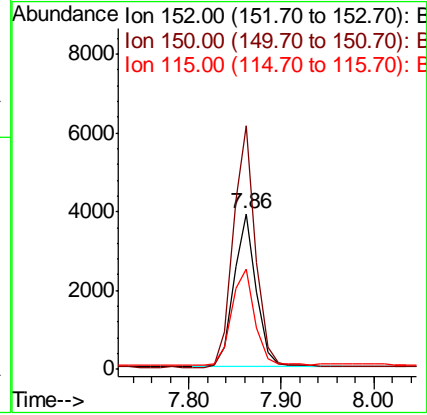
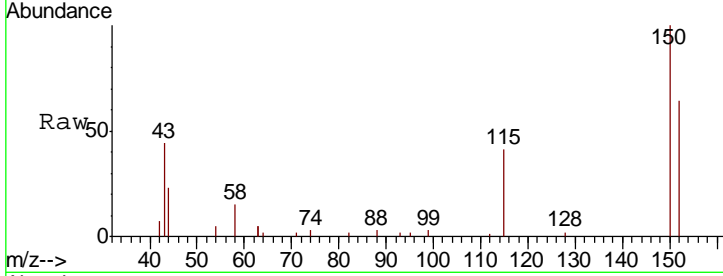
Quant Time: Sep 24 07:10:34 2019
 Quant Method : Z:\SVOASRV\HPCHEM1\BNA E\METHODS\8270-SIM-BE092019.M
 Quant Title : ASP BNA STANDARDS FOR 5 POINT CALIBRATION
 QLast Update : Fri Sep 20 18:26:17 2019
 Response via : Initial Calibration





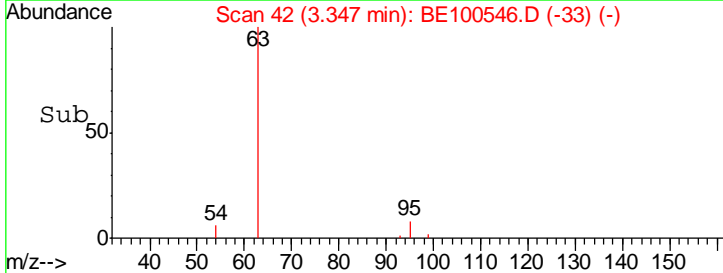
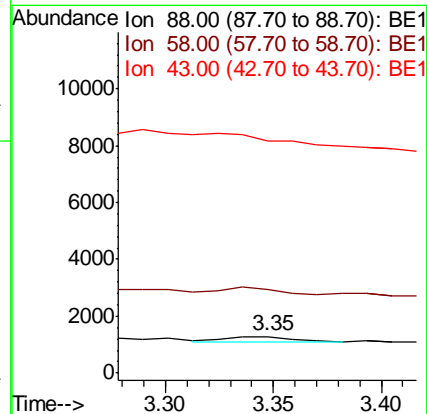
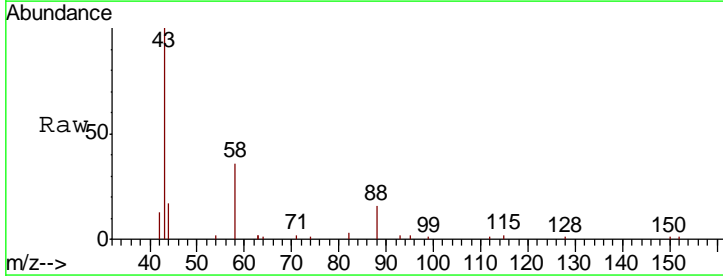
#1
 1,4-Dichlorobenzene-d4
 Concen: 0.400 ng
 RT: 7.86 min Scan# 434
 Delta R.T. -0.00 min
 Lab File: BE100546.D
 Acq: 23 Sep 2019 19:22

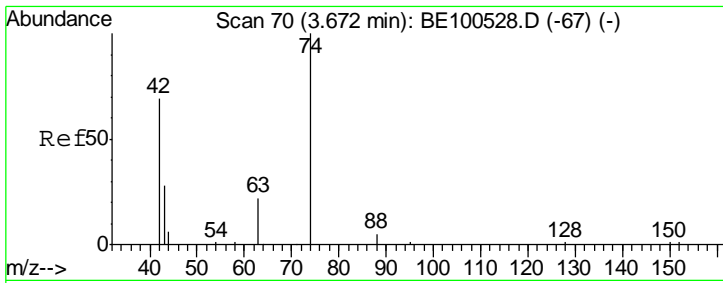
Tgt Ion	Resp	Lower	Upper
152	100		
150	156.2	121.6	182.4
115	63.9	48.2	72.4



#2
 1,4-Dioxane
 Concen: 0.043 ng
 RT: 3.35 min Scan# 42
 Delta R.T. 0.01 min
 Lab File: BE100546.D
 Acq: 23 Sep 2019 19:22

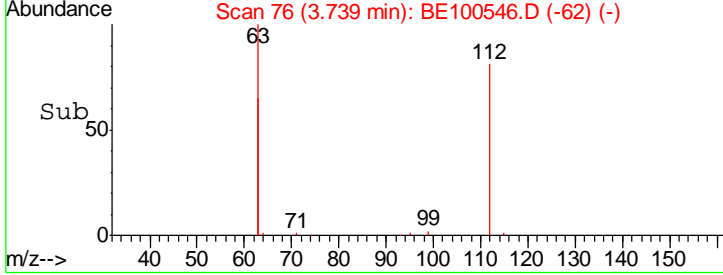
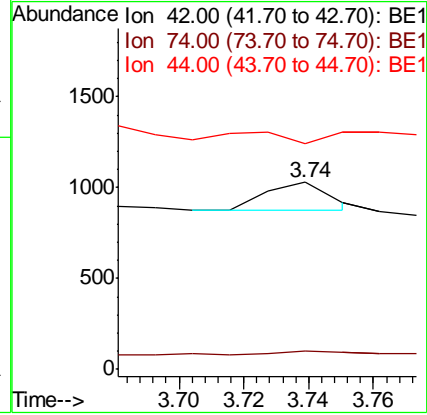
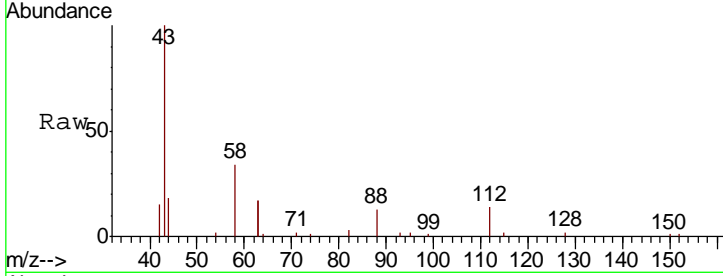
Tgt Ion	Resp	Lower	Upper
88	100		
58	88.6	53.3	79.9#
43	0.0	16.9	25.3#





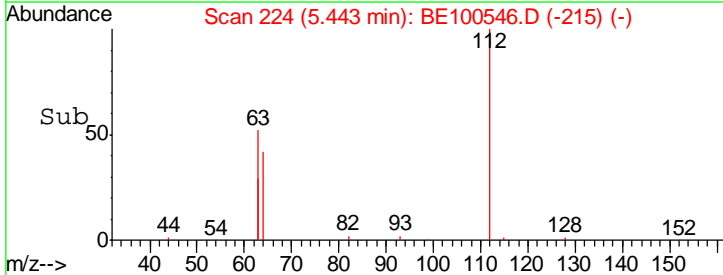
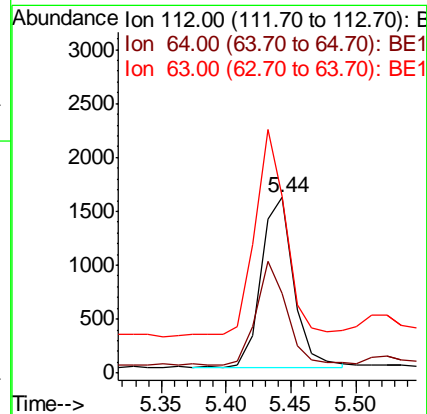
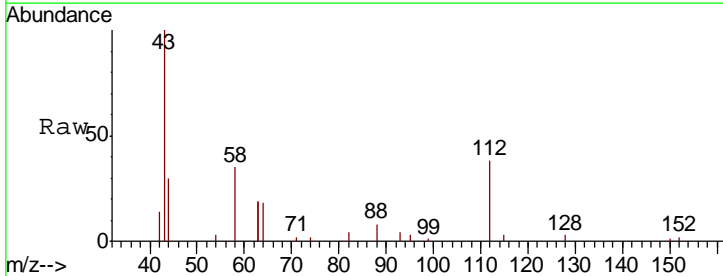
#3
 n-Nitrosodimethylamine
 Concen: 0.039 ng
 RT: 3.74 min Scan# 76
 Delta R.T. 0.07 min
 Lab File: BE100546.D
 Acq: 23 Sep 2019 19:22

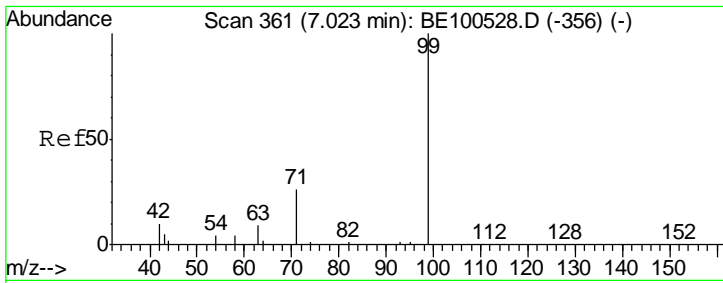
Tgt Ion	Resp	Lower	Upper
42	100		
74	12.0	133.8	200.6#
44	35.6	6.4	9.6#



#4
 2-Fluorophenol
 Concen: 0.181 ng
 RT: 5.44 min Scan# 224
 Delta R.T. 0.01 min
 Lab File: BE100546.D
 Acq: 23 Sep 2019 19:22

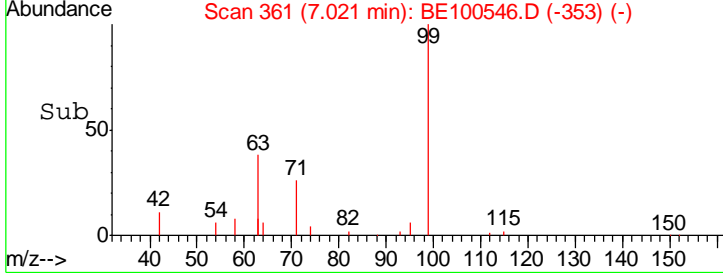
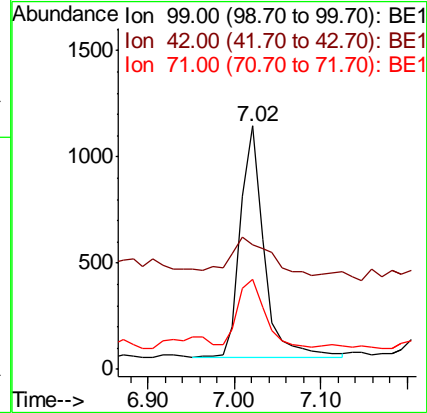
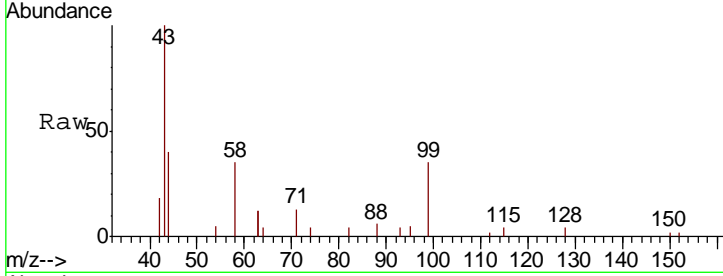
Tgt Ion	Resp	Lower	Upper
112	100		
64	57.6	44.1	66.1
63	116.5	86.5	129.7





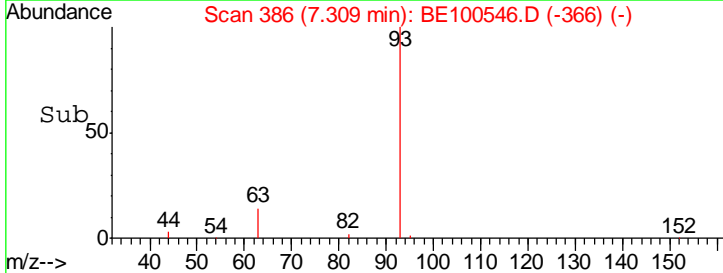
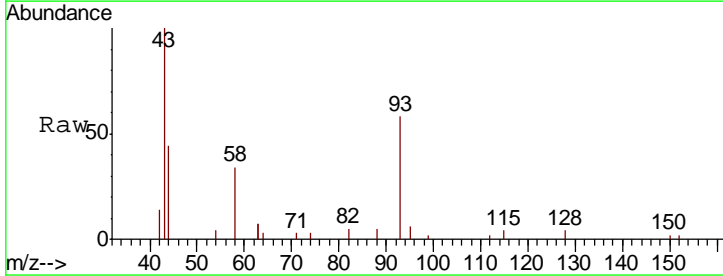
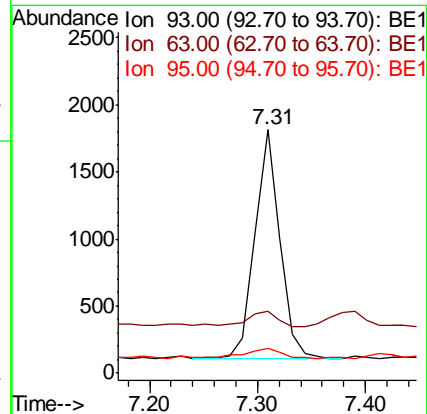
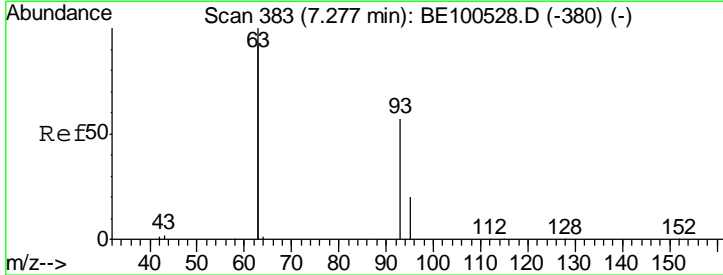
#5
 Phenol-d6
 Concen: 0.098 ng
 RT: 7.02 min Scan# 361
 Delta R.T. -0.00 min
 Lab File: BE100546.D
 Acq: 23 Sep 2019 19:22

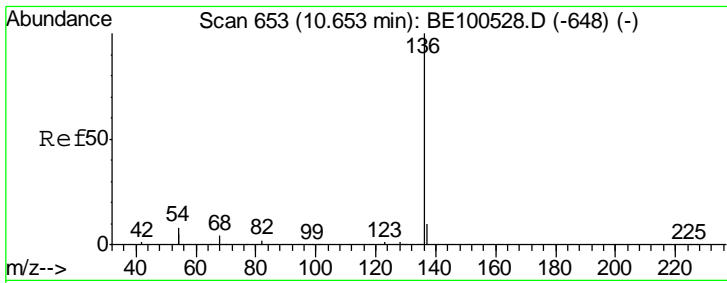
Tgt Ion	Resp	Lower	Upper
99	2052		
Ion Ratio			
99	100		
42	28.1	13.0	19.6#
71	33.7	23.4	35.0



#6
 bis(2-Chloroethyl)ether
 Concen: 0.131 ng
 RT: 7.31 min Scan# 386
 Delta R.T. 0.03 min
 Lab File: BE100546.D
 Acq: 23 Sep 2019 19:22

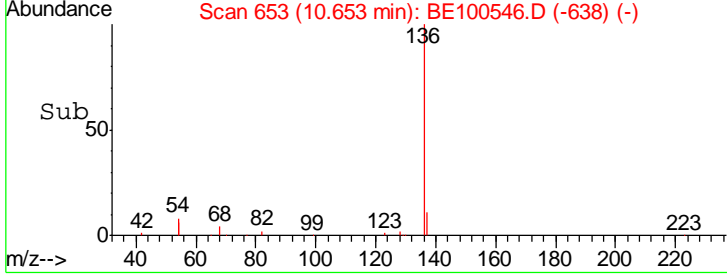
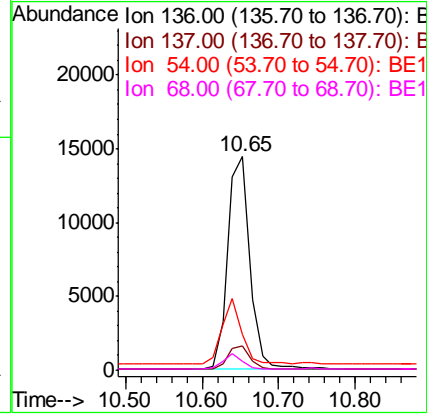
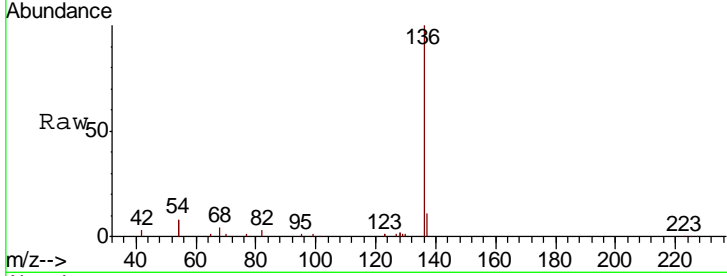
Tgt Ion	Resp	Lower	Upper
93	2778		
Ion Ratio			
93	100		
63	8.2	213.4	320.0#
95	7.2	23.7	35.5#





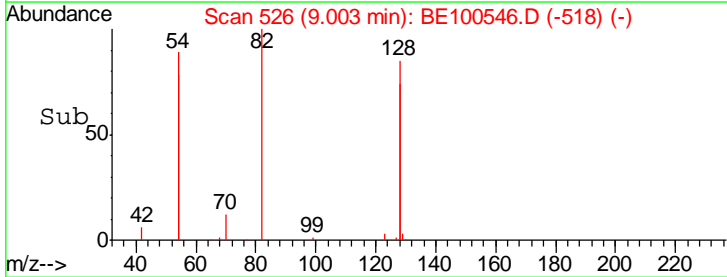
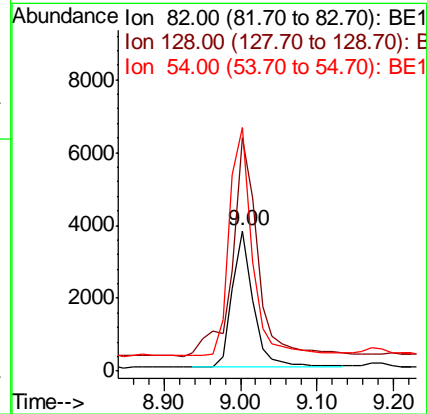
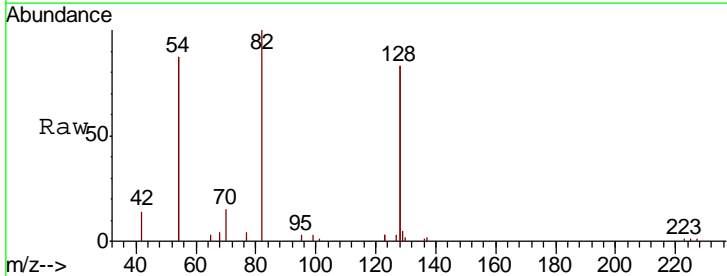
#7
 Naphthalene-d8
 Concen: 0.400 ng
 RT: 10.65 min Scan# 653
 Delta R.T. -0.00 min
 Lab File: BE100546.D
 Acq: 23 Sep 2019 19:22

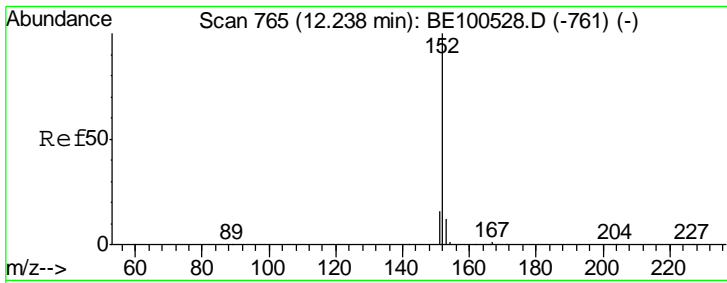
Tgt Ion	Resp	Lower	Upper
136	100		
137	11.2	8.6	13.0
54	16.9	12.4	18.6
68	4.2	3.3	4.9



#8
 Nitrobenzene-d5
 Concen: 0.430 ng
 RT: 9.00 min Scan# 526
 Delta R.T. -0.00 min
 Lab File: BE100546.D
 Acq: 23 Sep 2019 19:22

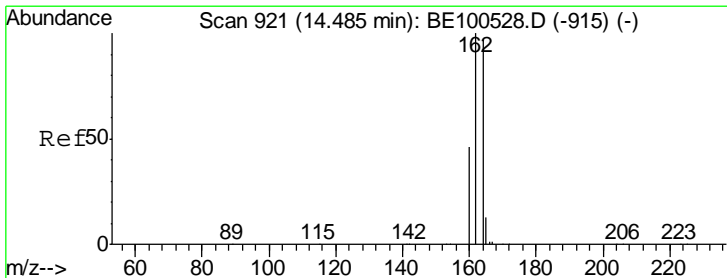
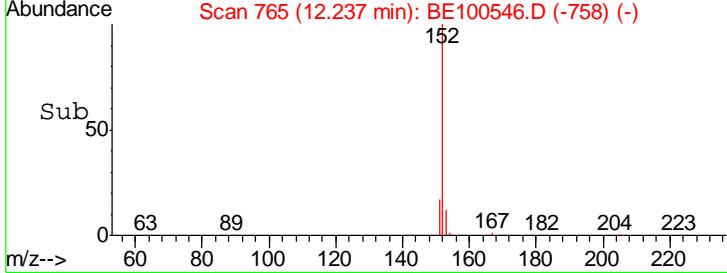
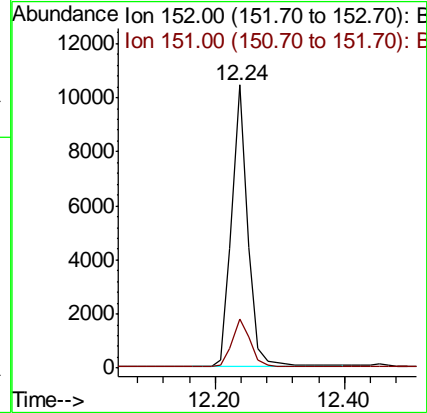
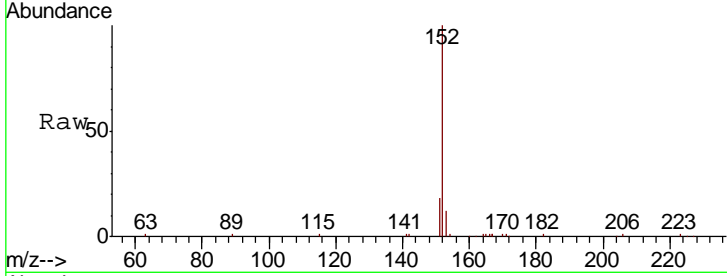
Tgt Ion	Resp	Lower	Upper
82	100		
128	166.0	129.4	194.2
54	173.6	143.3	214.9





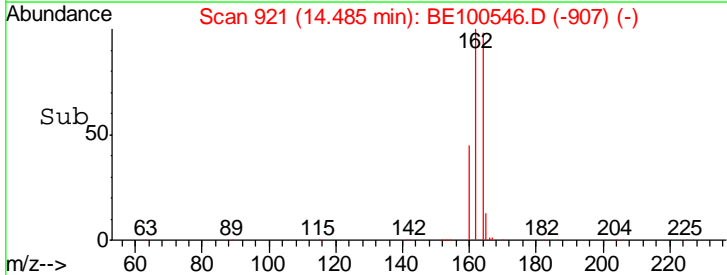
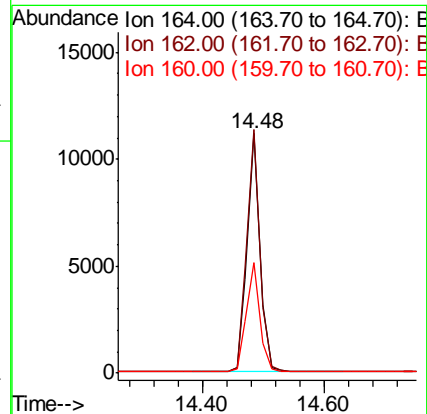
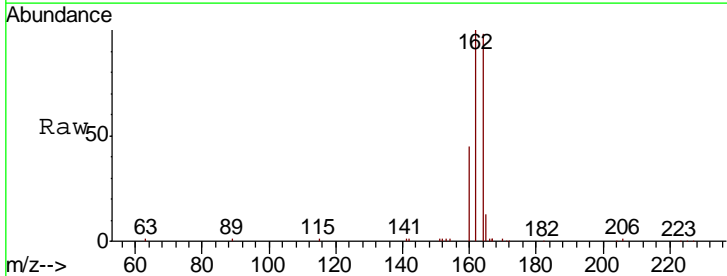
#11
 2-Methylnaphthalene-d10
 Concen: 0.409 ng
 RT: 12.24 min Scan# 765
 Delta R.T. -0.00 min
 Lab File: BE100546.D
 Acq: 23 Sep 2019 19:22

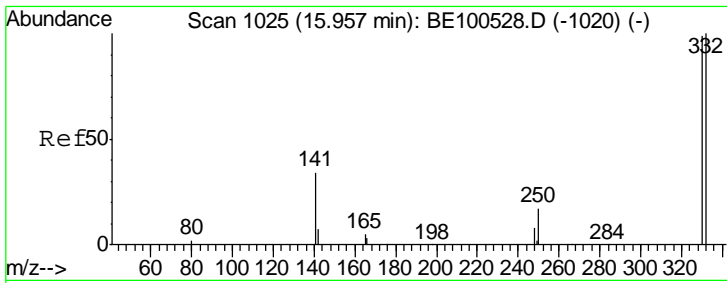
Tgt Ion	Resp	Lower	Upper
152	17957		
151	19.1	15.3	22.9



#13
 Acenaphthene-d10
 Concen: 0.400 ng
 RT: 14.48 min Scan# 921
 Delta R.T. -0.00 min
 Lab File: BE100546.D
 Acq: 23 Sep 2019 19:22

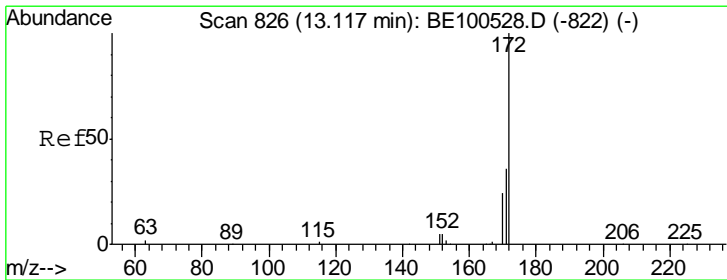
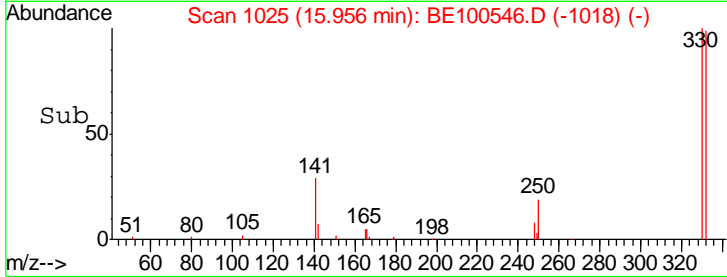
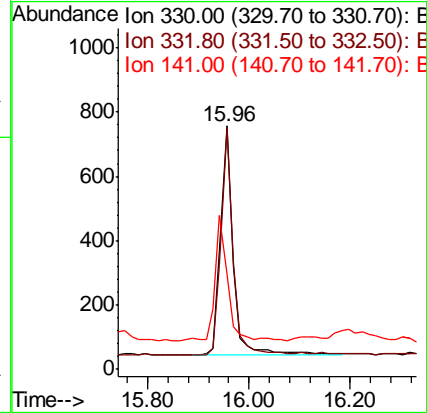
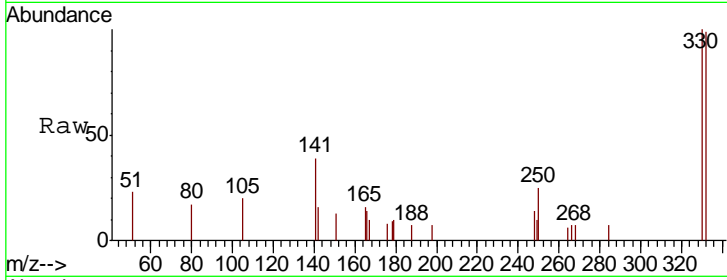
Tgt Ion	Resp	Lower	Upper
164	16694		
162	101.7	82.1	123.1
160	46.3	37.6	56.4





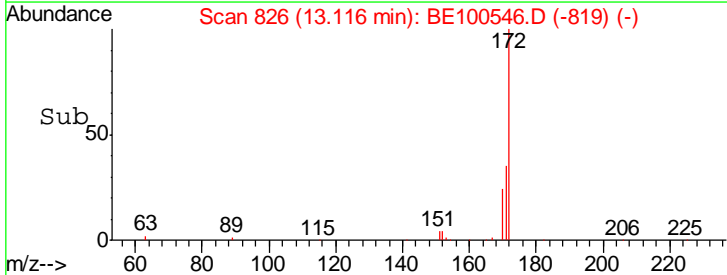
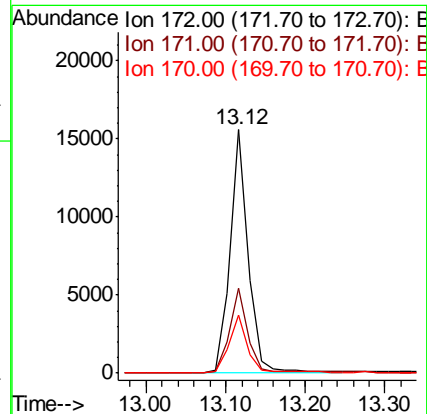
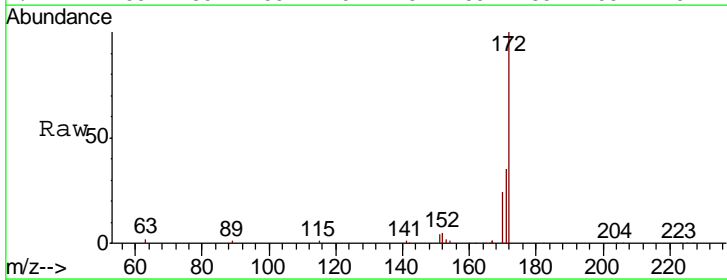
#14
 2,4,6-Tribromophenol
 Concen: 0.451 ng
 RT: 15.96 min Scan# 1025
 Delta R.T. -0.00 min
 Lab File: BE100546.D
 Acq: 23 Sep 2019 19:22

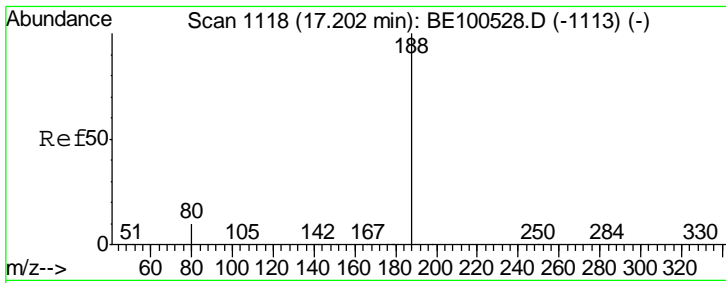
Tgt Ion	Resp	Lower	Upper
330	100		
332	94.7	75.5	113.3
141	49.3	42.3	63.5



#15
 2-Fluorobiphenyl
 Concen: 0.409 ng
 RT: 13.12 min Scan# 826
 Delta R.T. -0.00 min
 Lab File: BE100546.D
 Acq: 23 Sep 2019 19:22

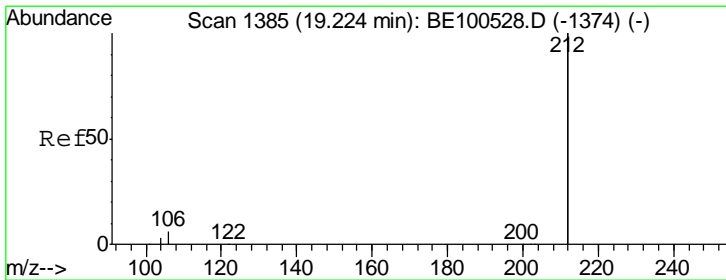
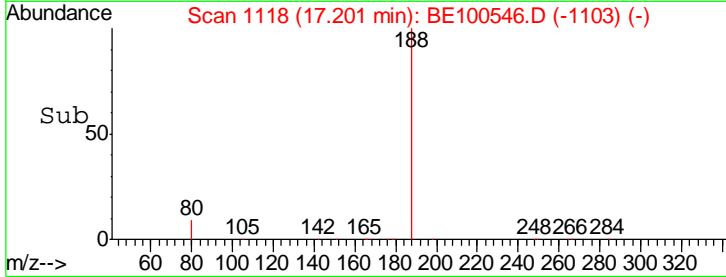
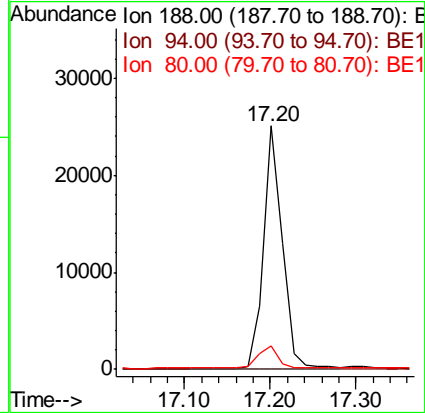
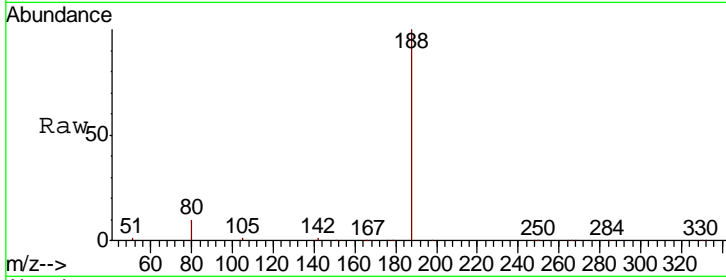
Tgt Ion	Resp	Lower	Upper
172	100		
171	34.7	28.8	43.2
170	23.9	19.4	29.0





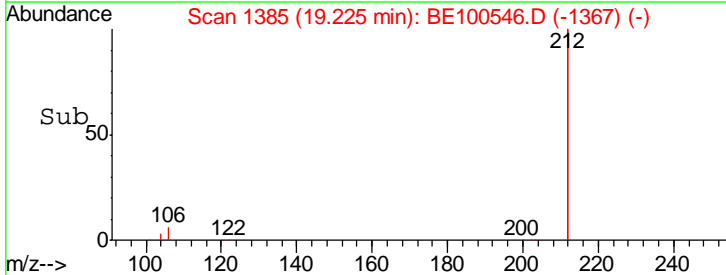
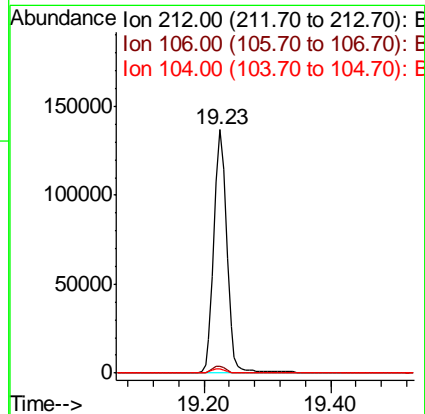
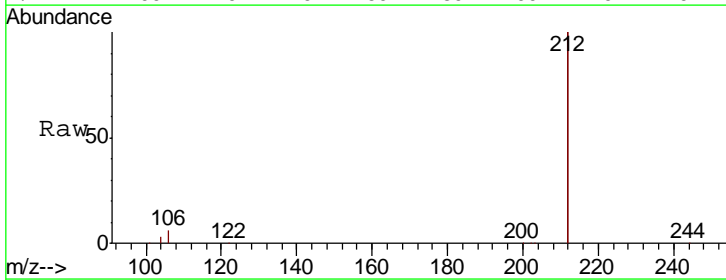
#19
 Phenanthrene-d10
 Concen: 0.400 ng
 RT: 17.20 min Scan# 1118
 Delta R.T. -0.00 min
 Lab File: BE100546.D
 Acq: 23 Sep 2019 19:22

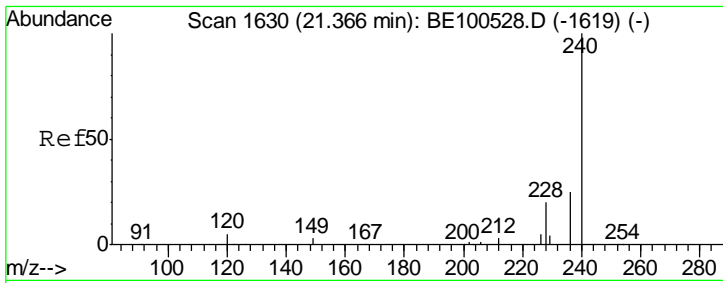
Tgt Ion	Resp	Lower	Upper
188	37887		
94	0.0	0.0	0.0
80	9.5	8.0	12.0



#25
 Fluoranthene-d10
 Concen: 0.425 ng
 RT: 19.23 min Scan# 1385
 Delta R.T. 0.00 min
 Lab File: BE100546.D
 Acq: 23 Sep 2019 19:22

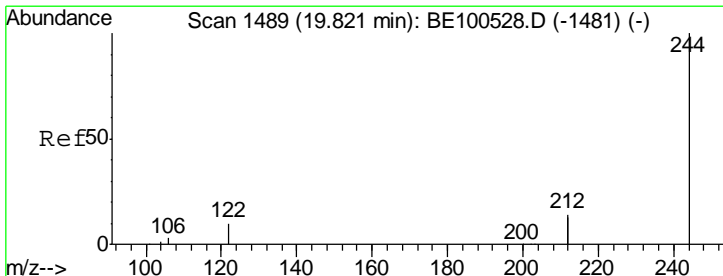
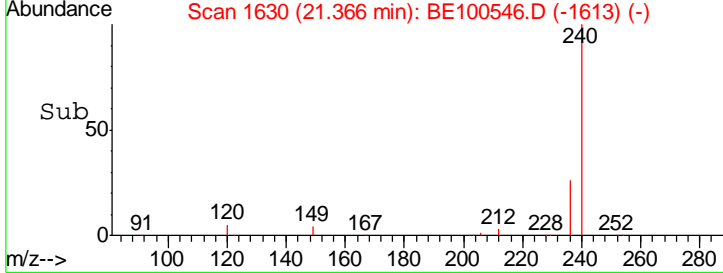
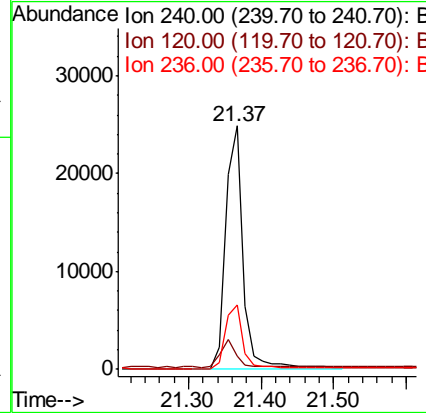
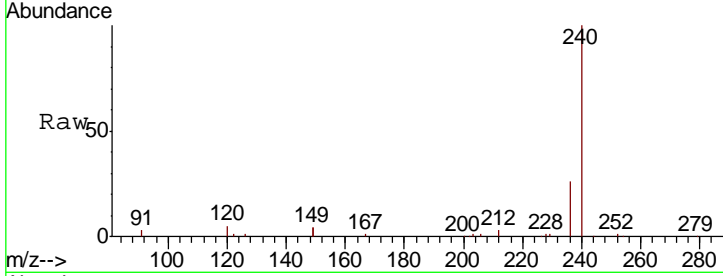
Tgt Ion	Resp	Lower	Upper
212	191327		
106	3.0	2.3	3.5
104	1.7	1.3	1.9





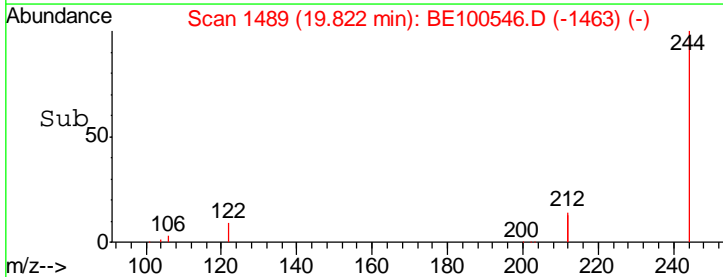
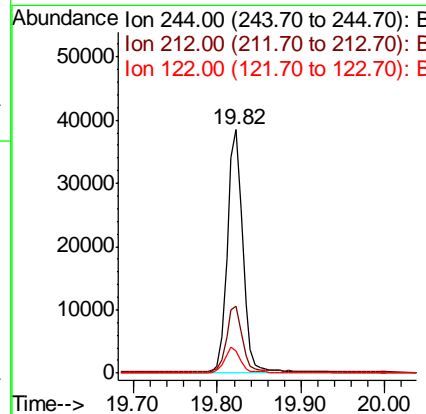
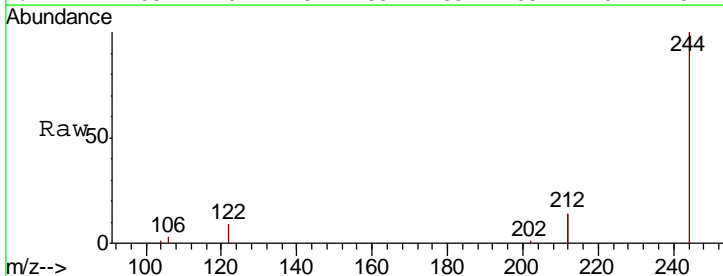
#27
 Chrysene-d12
 Concen: 0.400 ng
 RT: 21.37 min Scan# 1630
 Delta R.T. 0.00 min
 Lab File: BE100546.D
 Acq: 23 Sep 2019 19:22

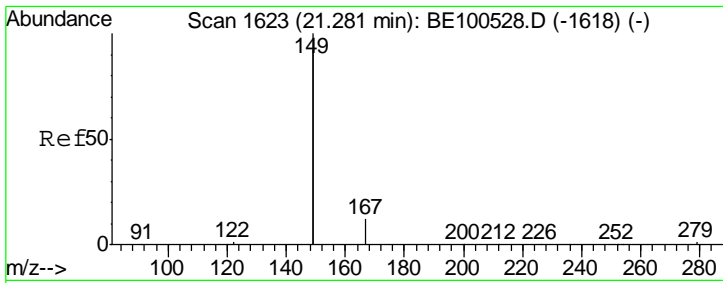
Tgt Ion	Resp	Lower	Upper
240	41898		
120	5.4	4.5	6.7
236	26.4	20.6	30.8



#29
 Terphenyl-d14
 Concen: 0.498 ng
 RT: 19.82 min Scan# 1489
 Delta R.T. 0.00 min
 Lab File: BE100546.D
 Acq: 23 Sep 2019 19:22

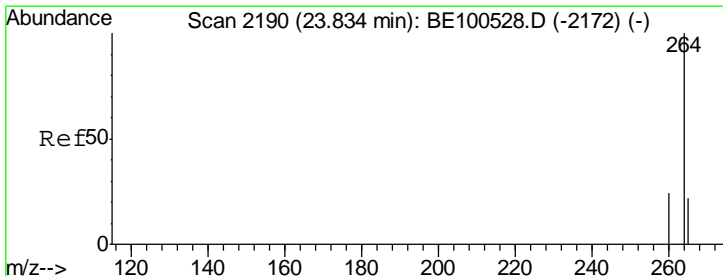
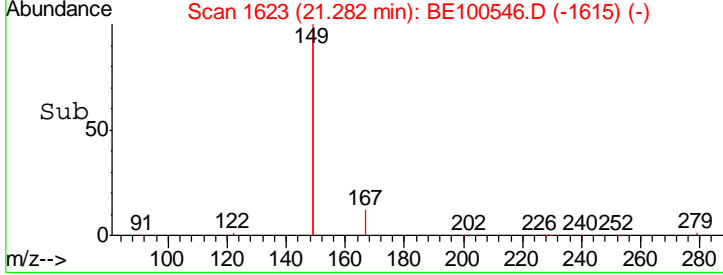
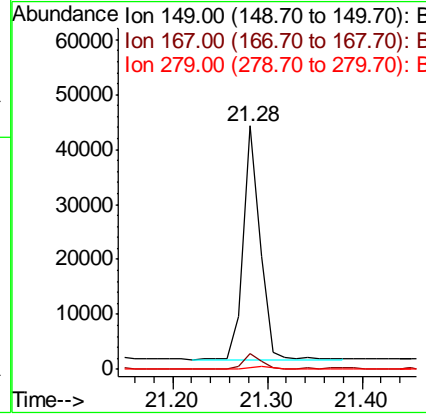
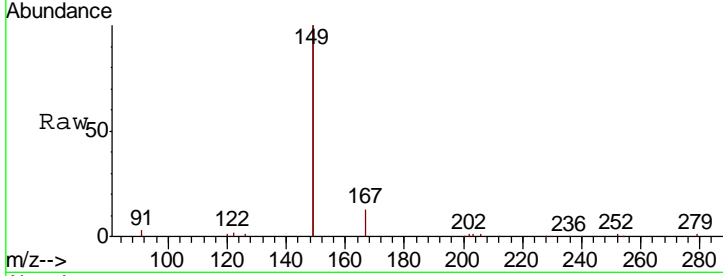
Tgt Ion	Resp	Lower	Upper
244	49453		
212	27.3	22.2	33.2
122	9.1	8.3	12.5





#32
 Bis(2-ethylhexyl)phthalate
 Concen: 0.437 ng
 RT: 21.28 min Scan# 1623
 Delta R.T. 0.00 min
 Lab File: BE100546.D
 Acq: 23 Sep 2019 19:22

Tgt Ion	Resp	Lower	Upper
149	100		
167	6.5	5.2	7.8
279	1.0	1.0	1.4



#34
 Perylene-d12
 Concen: 0.400 ng
 RT: 23.83 min Scan# 2190
 Delta R.T. -0.00 min
 Lab File: BE100546.D
 Acq: 23 Sep 2019 19:22

Tgt Ion	Resp	Lower	Upper
264	100		
260	24.0	19.6	29.4
265	25.8	21.8	32.8

