

Data Path : Z:\SVOASRV\HPCHEM1\BNA E\DATA\BE100518\
 Data File : BE097765.D
 Acq On : 5 Oct 2018 21:20
 Operator : SJ/JU
 Sample : J5284-08
 Misc :
 ALS Vial : 19 Sample Multiplier: 1

Instrument :
 BNA_E
 ClientSampleId :
 RE-120D2-20181002

Quant Time: Oct 06 05:05:28 2018
 Quant Method : Z:\SVOASRV\HPCHEM1\BNA E\METHODS\8270-SIM-BE100318.M
 Quant Title : ASP BNA STANDARDS FOR 5 POINT CALIBRATION
 QLast Update : Wed Oct 03 12:17:19 2018
 Response via : Initial Calibration

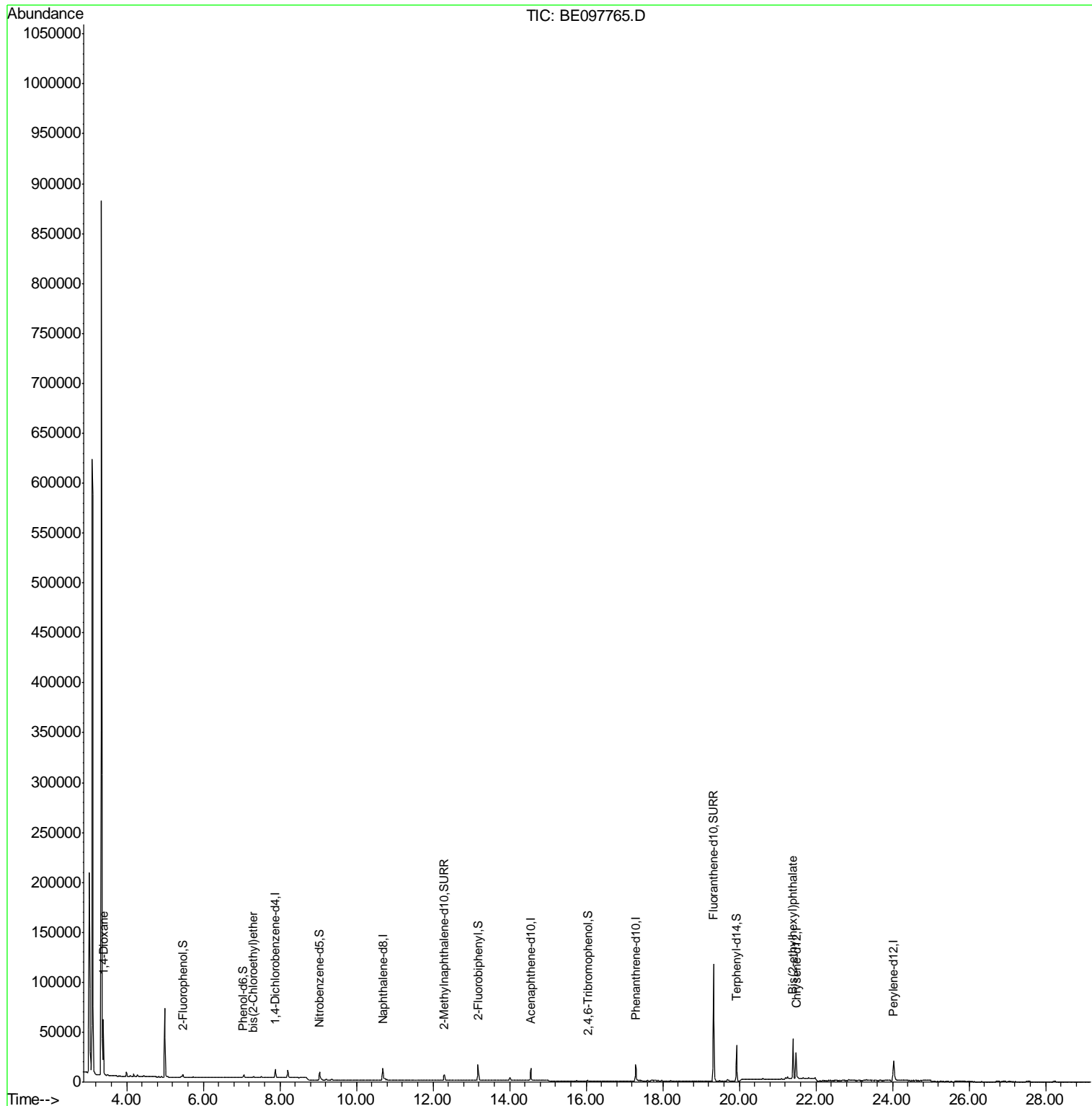
Internal Standards	R.T.	QIon	Response	Conc	Units	Dev(Min)
1) 1,4-Dichlorobenzene-d4	7.89	152	3501	0.40	ng	-0.01
7) Naphthalene-d8	10.69	136	14262	0.40	ng	0.00
13) Acenaphthene-d10	14.56	164	7963	0.40	ng	0.00
19) Phenanthrene-d10	17.29	188	23706	0.40	ng	-0.01
27) Chrysene-d12	21.49	240	32972	0.40	ng	0.00
34) Perylene-d12	24.03	264	31484	0.40	ng	-0.01
System Monitoring Compounds						
4) 2-Fluorophenol	5.47	112	1457	0.18	ng	0.00
5) Phenol-d6	7.04	99	1272	0.10	ng	0.00
8) Nitrobenzene-d5	9.04	82	3674	0.79	ng	0.00
11) 2-Methylnaphthalene-d10	12.30	152	9618	0.42	ng	0.00
14) 2,4,6-Tribromophenol	16.03	330	754	0.52	ng	-0.01
15) 2-Fluorobiphenyl	13.17	172	15843	0.45	ng	-0.02
25) Fluoranthene-d10	19.32	212	157398	0.52	ng	0.00
29) Terphenyl-d14	19.93	244	30728	0.46	ng	0.00
Target Compounds						
2) 1,4-Dioxane	3.39	88	33370	4.784	ng	96
6) bis(2-Chloroethyl)ether	7.31	93	363	0.028	ng	88
32) Bis(2-ethylhexyl)phthalate	21.40	149	52667	0.812	ng	100

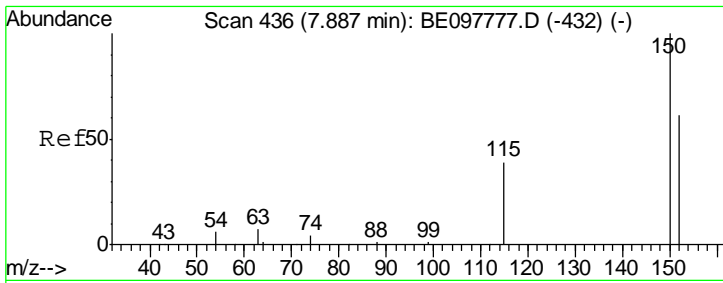
(#) = qualifier out of range (m) = manual integration (+) = signals summed

Data Path : Z:\SVOASRV\HPCHEM1\BNA E\DATA\BE100518\
 Data File : BE097765.D
 Acq On : 5 Oct 2018 21:20
 Operator : SJ/JU
 Sample : J5284-08
 Misc :
 ALS Vial : 19 Sample Multiplier: 1

Instrument :
 BNA_E
 ClientSampleId :
 RE-120D2-20181002

Quant Time: Oct 06 05:05:28 2018
 Quant Method : Z:\SVOASRV\HPCHEM1\BNA E\METHODS\8270-SIM-BE100318.M
 Quant Title : ASP BNA STANDARDS FOR 5 POINT CALIBRATION
 QLast Update : Wed Oct 03 12:17:19 2018
 Response via : Initial Calibration

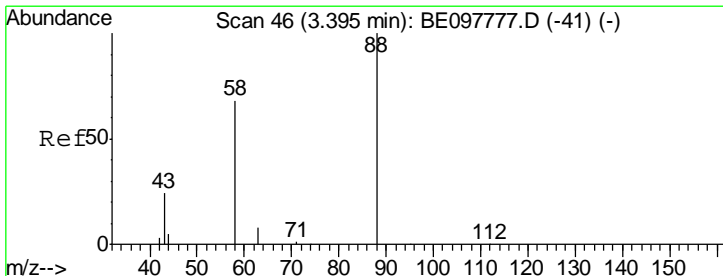
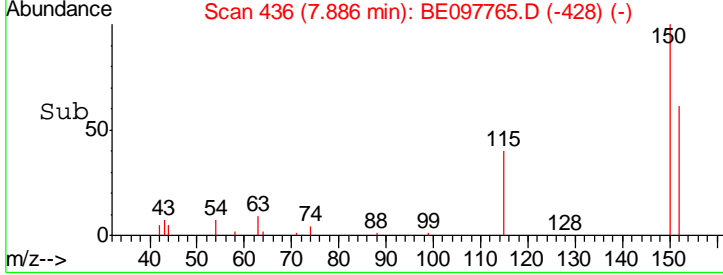
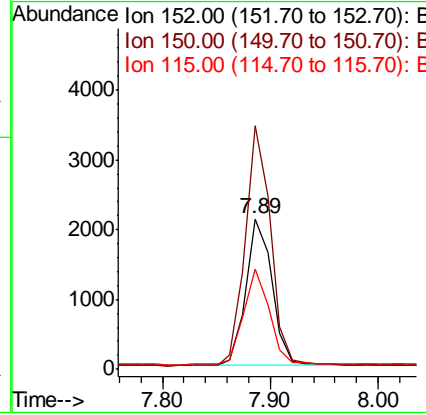
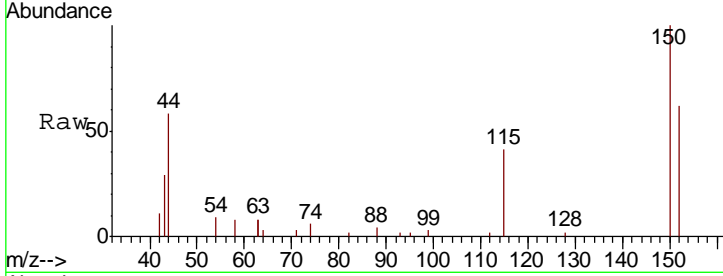




#1
 1,4-Dichlorobenzene-d4
 Concen: 0.400 ng
 RT: 7.89 min Scan# 436
 Delta R.T. -0.01 min
 Lab File: BE097765.D
 Acq: 5 Oct 2018 21:20

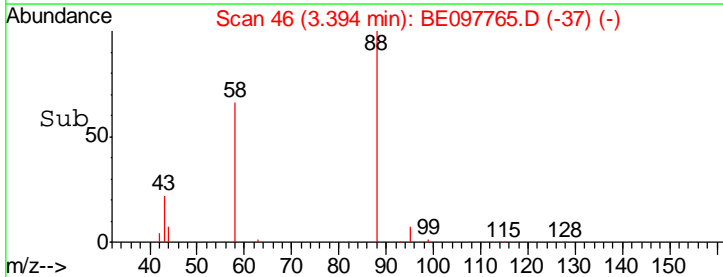
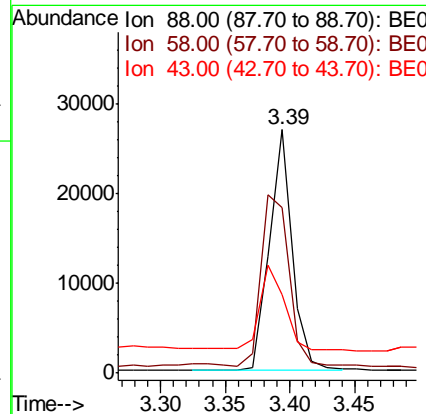
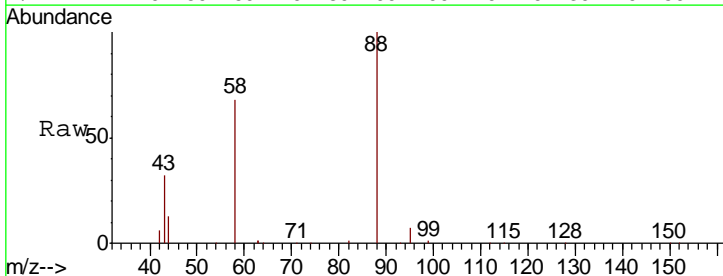
Instrument :
 BNA_E
 ClientSampleId :
 RE-120D2-20181002

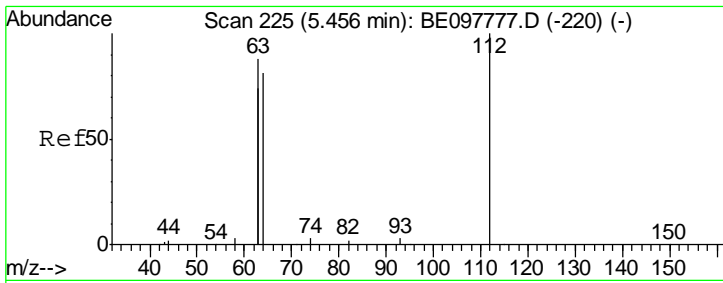
Tgt Ion	Resp	Lower	Upper
152	100		
150	162.0	120.9	181.3
115	66.9	46.6	69.8



#2
 1,4-Dioxane
 Concen: 4.784 ng
 RT: 3.39 min Scan# 46
 Delta R.T. -0.00 min
 Lab File: BE097765.D
 Acq: 5 Oct 2018 21:20

Tgt Ion	Resp	Lower	Upper
88	100		
58	85.6	70.8	106.2
43	37.6	33.3	49.9

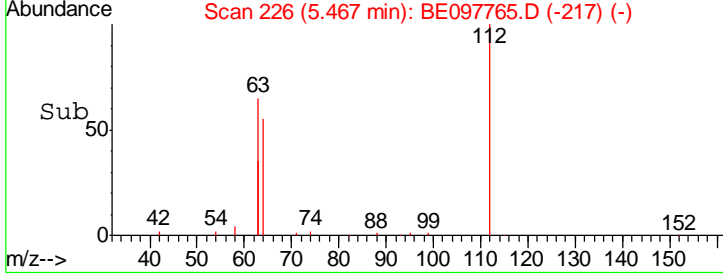
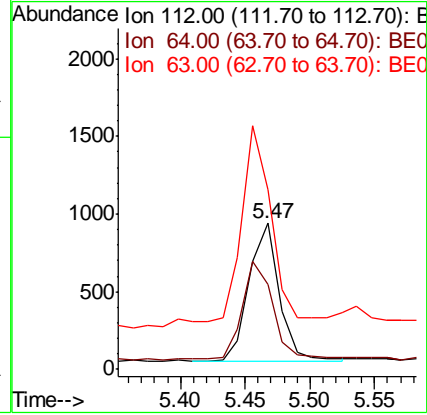
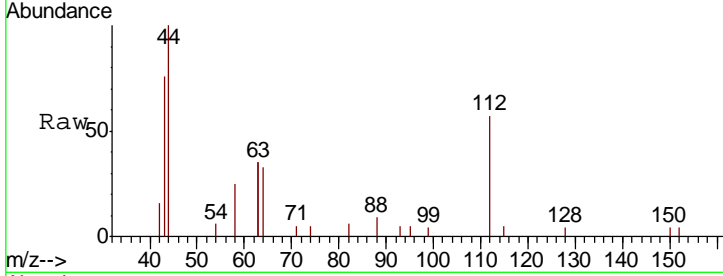




#4
 2-Fluorophenol
 Concen: 0.176 ng
 RT: 5.47 min Scan# 226
 Delta R.T. -0.00 min
 Lab File: BE097765.D
 Acq: 5 Oct 2018 21:20

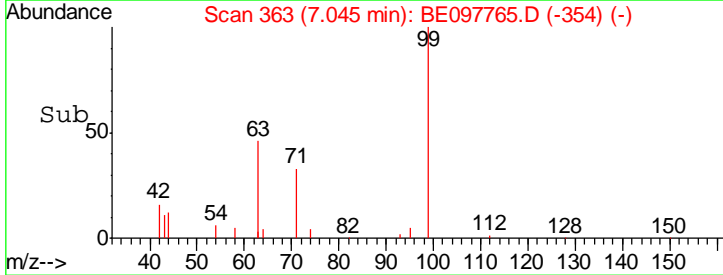
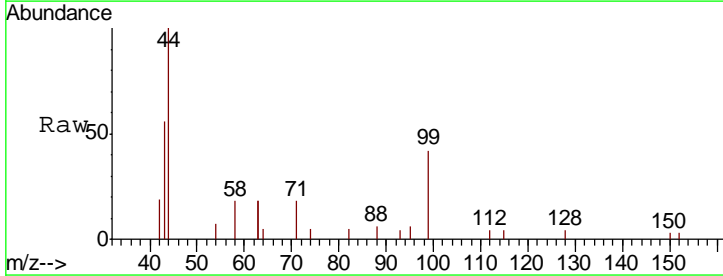
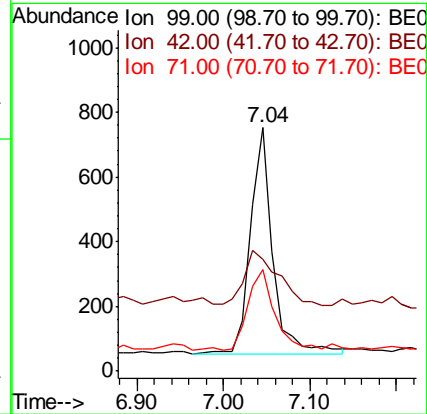
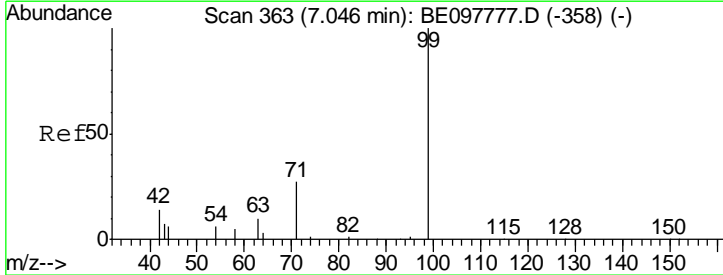
Instrument :
 BNA_E
ClientSampled :
 RE-120D2-20181002

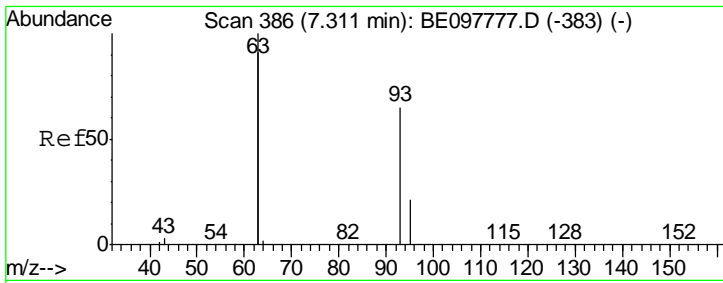
Tgt Ion	Resp	Lower	Upper
112	1457		
64	76.3	56.6	84.8
63	150.2	119.4	179.0



#5
 Phenol-d6
 Concen: 0.100 ng
 RT: 7.04 min Scan# 363
 Delta R.T. -0.00 min
 Lab File: BE097765.D
 Acq: 5 Oct 2018 21:20

Tgt Ion	Resp	Lower	Upper
99	1272		
42	35.9	19.9	29.9#
71	41.1	25.4	38.2#

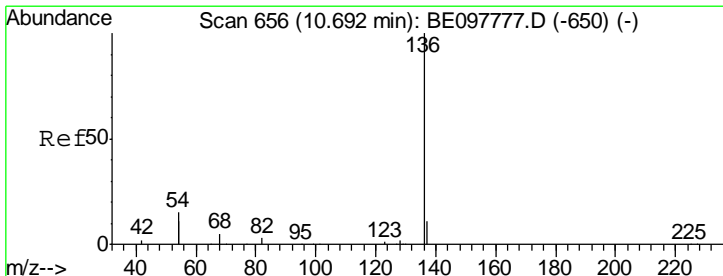
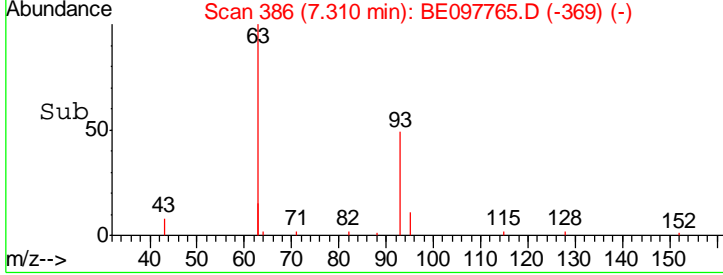
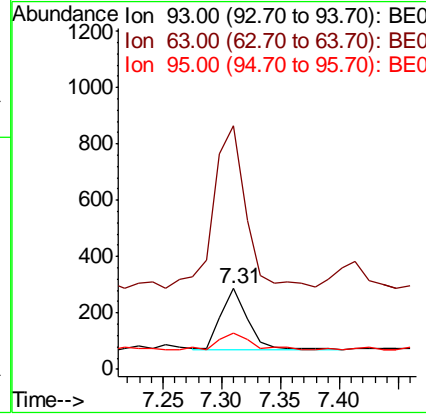
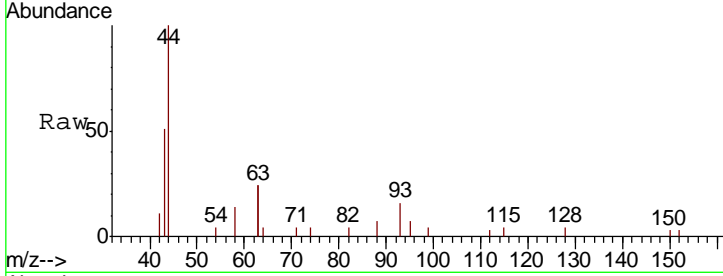




#6
 bis(2-Chloroethyl)ether
 Concen: 0.028 ng
 RT: 7.31 min Scan# 386
 Delta R.T. -0.00 min
 Lab File: BE097765.D
 Acq: 5 Oct 2018 21:20

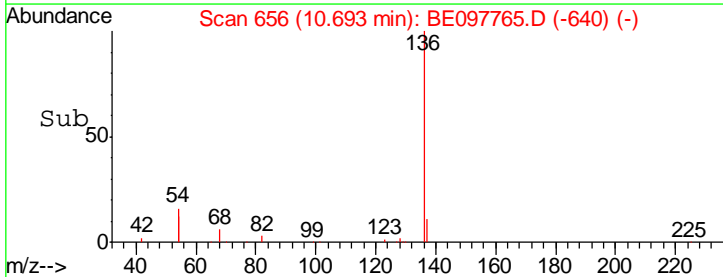
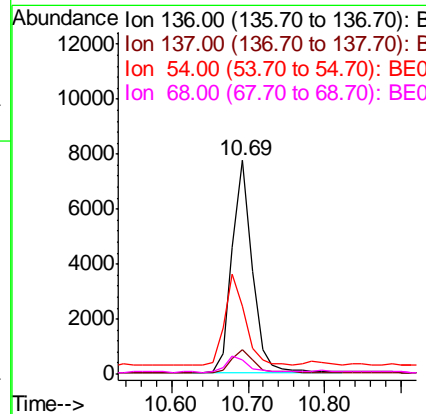
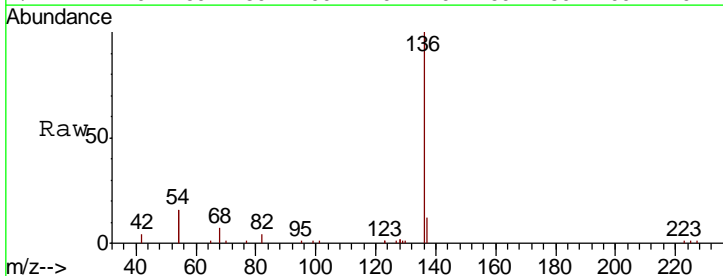
Instrument :
 BNA_E
ClientSampleId :
 RE-120D2-20181002

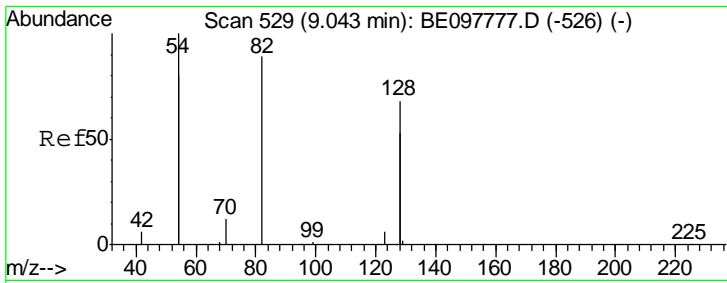
Tgt Ion	Resp	Lower	Upper
93	363		
93	100		
63	306.9	266.9	400.3
95	32.8	26.2	39.2



#7
 Naphthalene-d8
 Concen: 0.400 ng
 RT: 10.69 min Scan# 656
 Delta R.T. 0.00 min
 Lab File: BE097765.D
 Acq: 5 Oct 2018 21:20

Tgt Ion	Resp	Lower	Upper
136	14262		
136	100		
137	11.5	9.0	13.4
54	31.9	37.8	56.6#
68	6.6	6.4	9.6

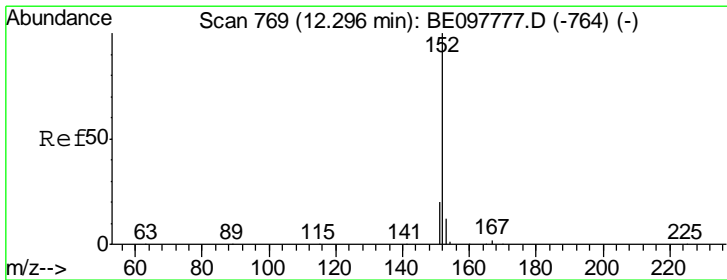
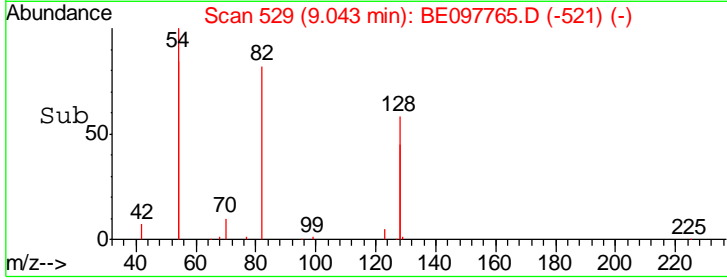
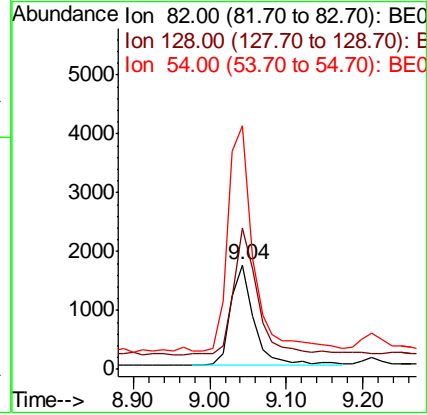
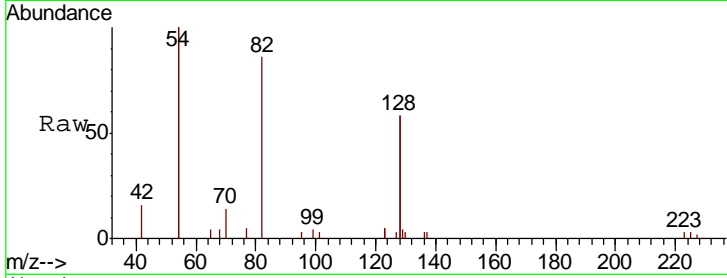




#8
 Nitrobenzene-d5
 Concen: 0.793 ng
 RT: 9.04 min Scan# 529
 Delta R.T. 0.00 min
 Lab File: BE097765.D
 Acq: 5 Oct 2018 21:20

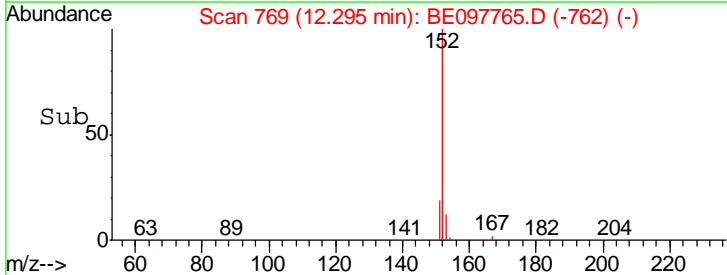
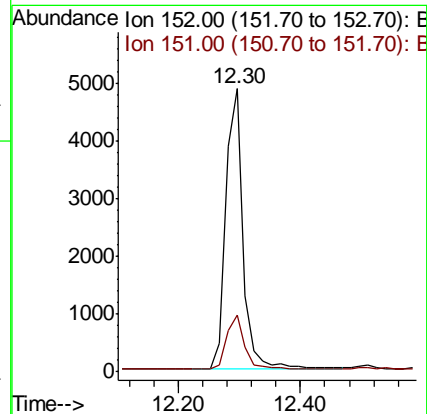
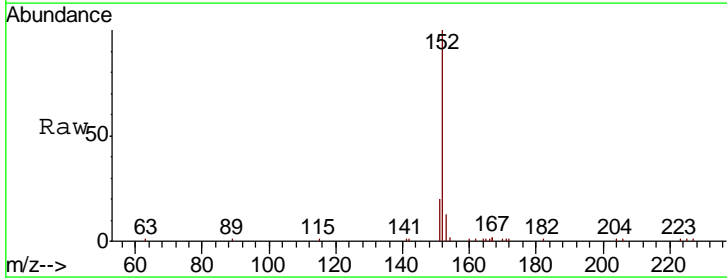
Instrument :
 BNA_E
 ClientSampleId :
 RE-120D2-20181002

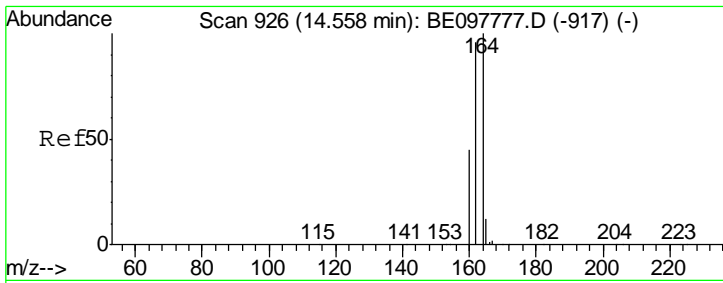
Tgt Ion	Resp	Lower	Upper
82	3674		
82	100		
128	134.9	97.0	145.4
54	232.7	206.9	310.3



#11
 2-Methylnaphthalene-d10
 Concen: 0.424 ng
 RT: 12.30 min Scan# 769
 Delta R.T. -0.00 min
 Lab File: BE097765.D
 Acq: 5 Oct 2018 21:20

Tgt Ion	Resp	Lower	Upper
152	9618		
152	100		
151	20.2	15.4	23.2

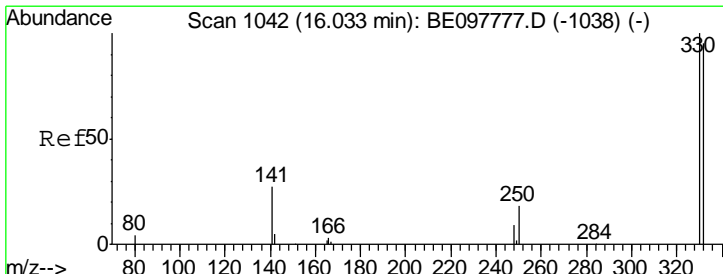
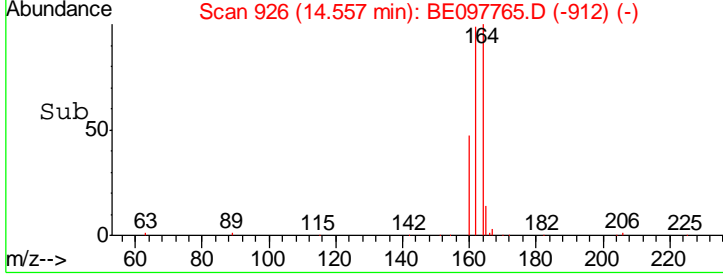
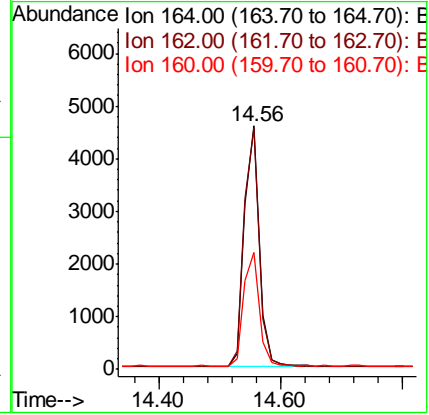
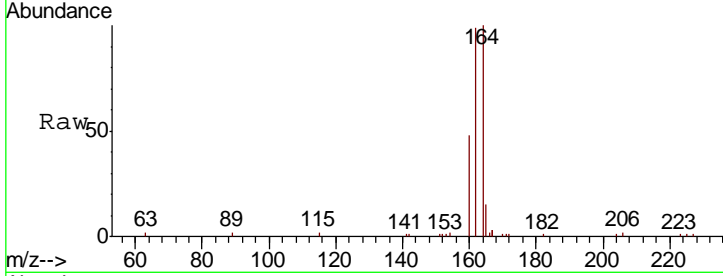




#13
 Acenaphthene-d10
 Concen: 0.400 ng
 RT: 14.56 min Scan# 926
 Delta R.T. -0.00 min
 Lab File: BE097765.D
 Acq: 5 Oct 2018 21:20

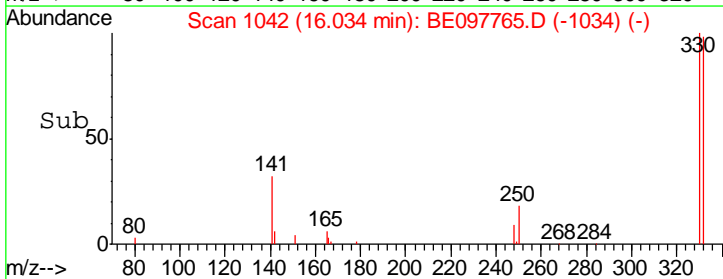
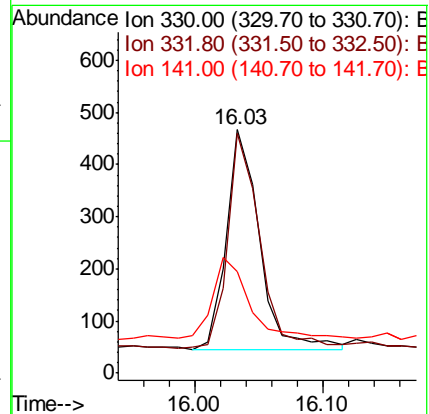
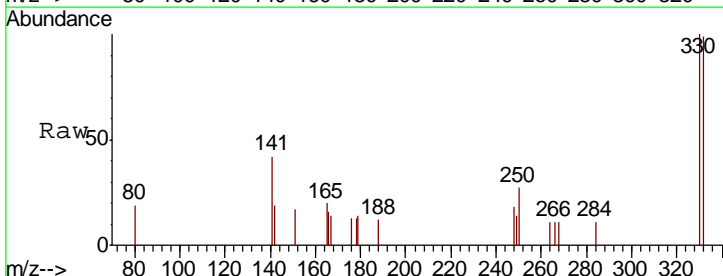
Instrument :
 BNA_E
ClientSampleId :
 RE-120D2-20181002

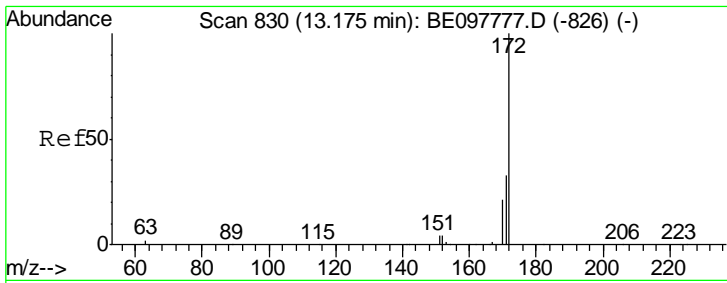
Tgt Ion	Resp	Lower	Upper
164	100		
162	99.2	78.6	117.8
160	48.1	37.8	56.6



#14
 2,4,6-Tribromophenol
 Concen: 0.522 ng
 RT: 16.03 min Scan# 1042
 Delta R.T. -0.01 min
 Lab File: BE097765.D
 Acq: 5 Oct 2018 21:20

Tgt Ion	Resp	Lower	Upper
330	100		
332	95.2	83.5	125.3
141	40.3	34.9	52.3

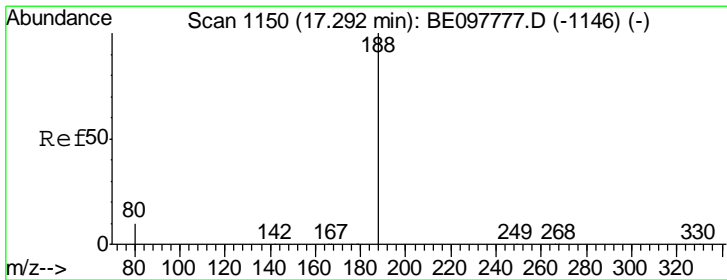
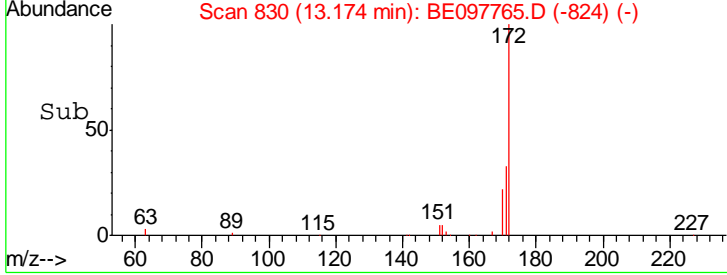
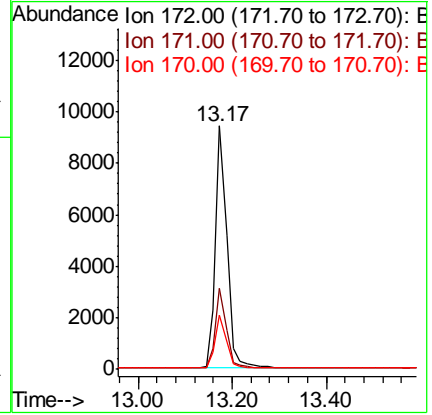
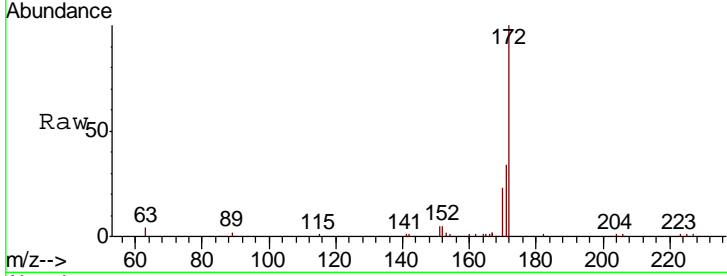




#15
 2-Fluorobiphenyl
 Concen: 0.452 ng
 RT: 13.17 min Scan# 830
 Delta R.T. -0.02 min
 Lab File: BE097765.D
 Acq: 5 Oct 2018 21:20

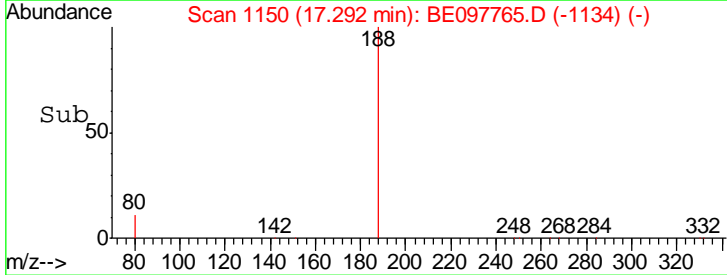
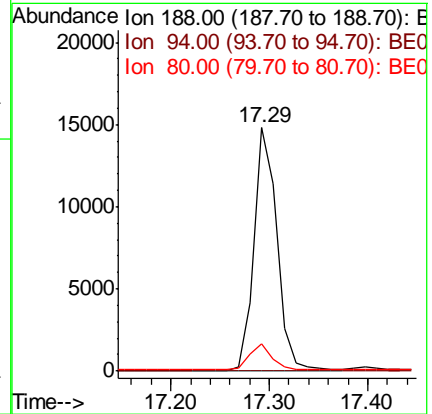
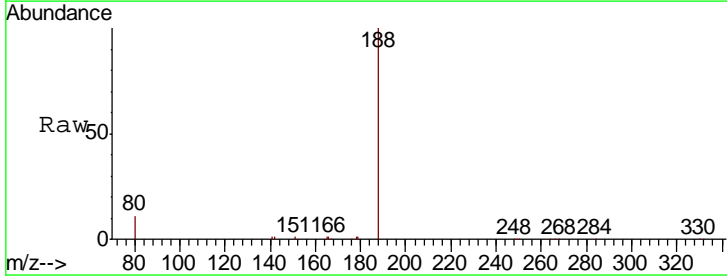
Instrument :
 BNA_E
 ClientSampleId :
 RE-120D2-20181002

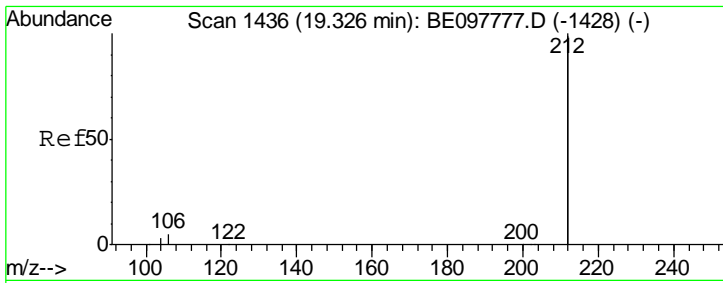
Tgt Ion	Resp	Lower	Upper
172	15843		
171	33.5	25.2	37.8
170	22.5	16.2	24.2



#19
 Phenanthrene-d10
 Concen: 0.400 ng
 RT: 17.29 min Scan# 1150
 Delta R.T. -0.01 min
 Lab File: BE097765.D
 Acq: 5 Oct 2018 21:20

Tgt Ion	Resp	Lower	Upper
188	23706		
94	0.0	0.0	0.0
80	11.3	6.6	9.8#

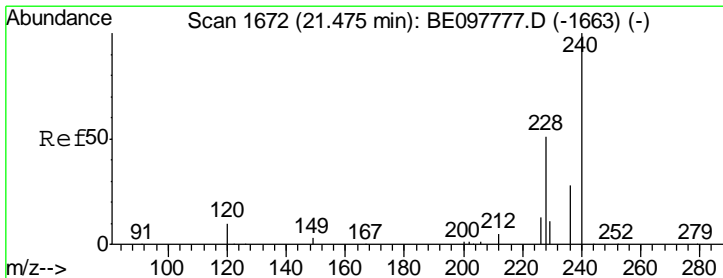
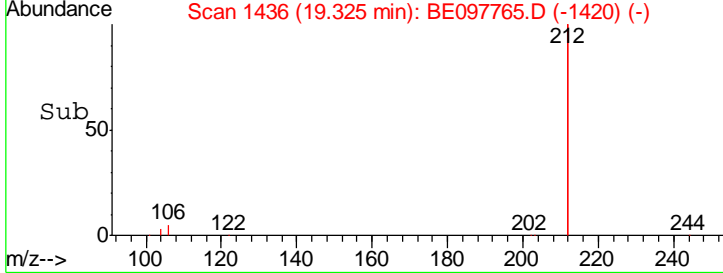
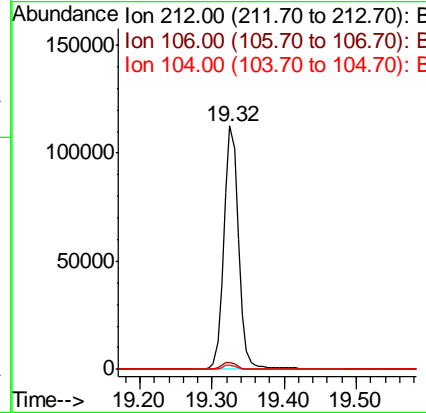
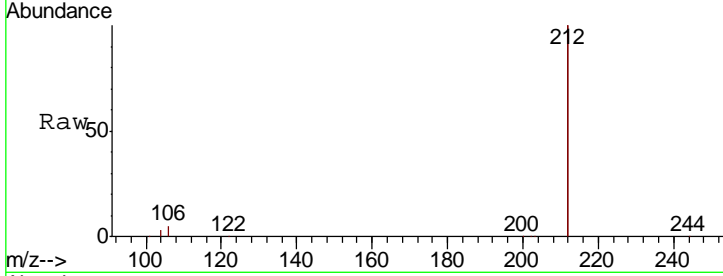




#25
 Fluoranthene-d10
 Concen: 0.525 ng
 RT: 19.32 min Scan# 1436
 Delta R.T. -0.01 min
 Lab File: BE097765.D
 Acq: 5 Oct 2018 21:20

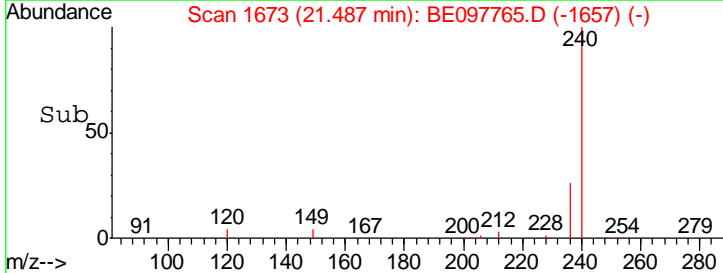
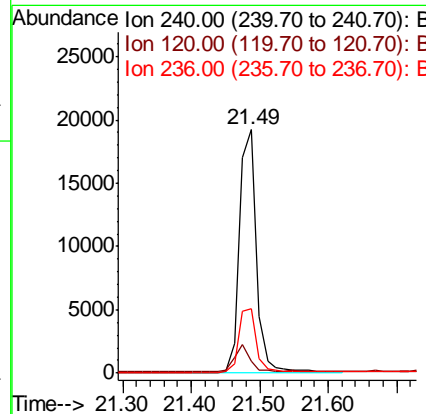
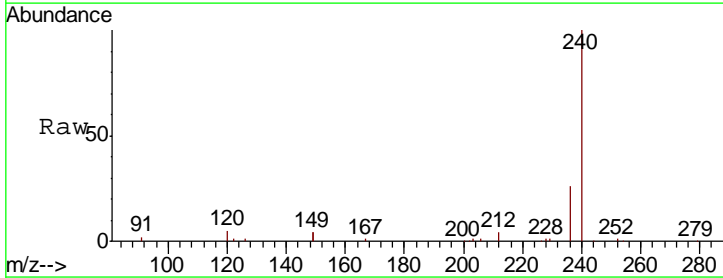
Instrument :
 BNA_E
 ClientSampleId :
 RE-120D2-20181002

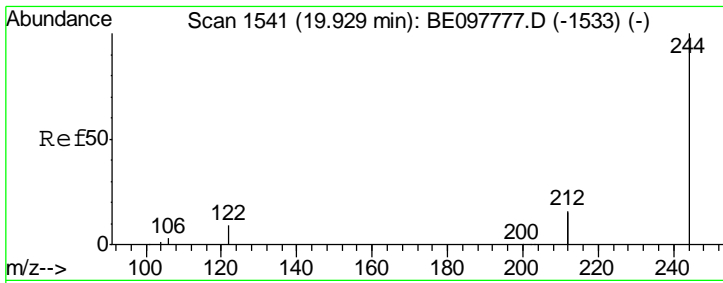
Tgt Ion	Resp	Lower	Upper
212	157398		
106	2.7	2.2	3.2
104	1.5	1.2	1.8



#27
 Chrysene-d12
 Concen: 0.400 ng
 RT: 21.49 min Scan# 1673
 Delta R.T. -0.00 min
 Lab File: BE097765.D
 Acq: 5 Oct 2018 21:20

Tgt Ion	Resp	Lower	Upper
240	32972		
120	4.8	4.7	7.1
236	26.4	20.8	31.2

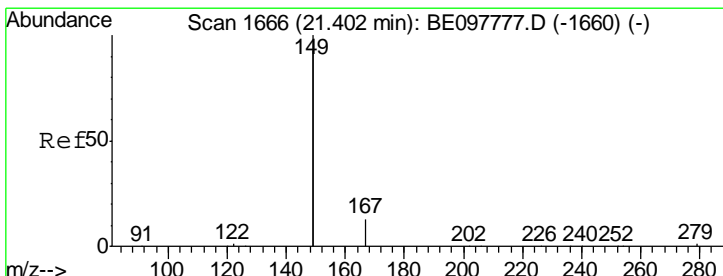
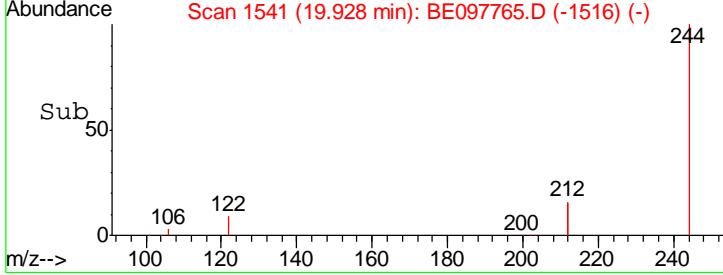
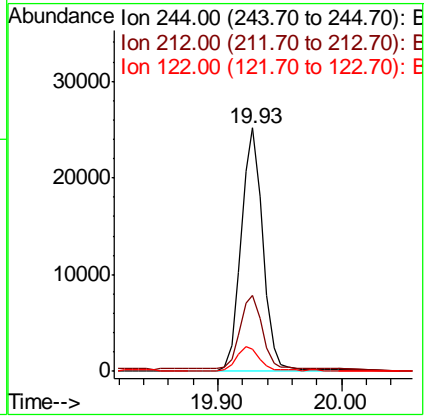
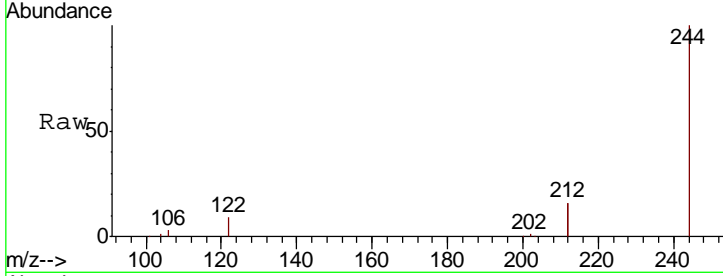




#29
 Terphenyl-d14
 Concen: 0.456 ng
 RT: 19.93 min Scan# 1541
 Delta R.T. -0.01 min
 Lab File: BE097765.D
 Acq: 5 Oct 2018 21:20

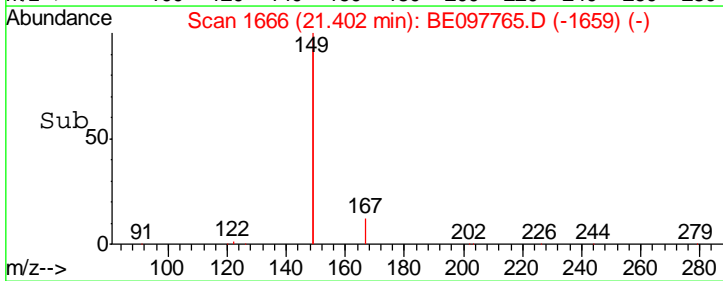
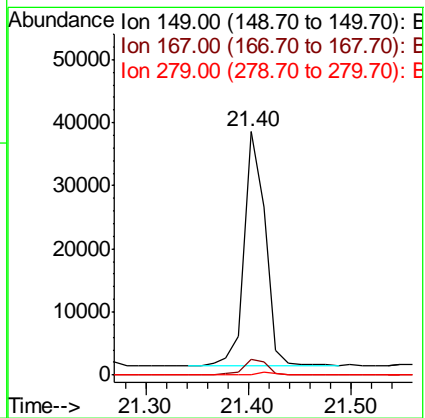
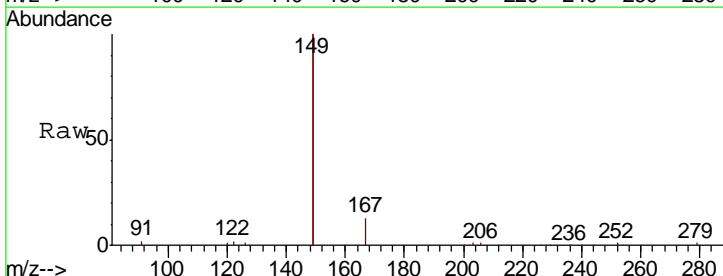
Instrument :
 BNA_E
 ClientSampled :
 RE-120D2-20181002

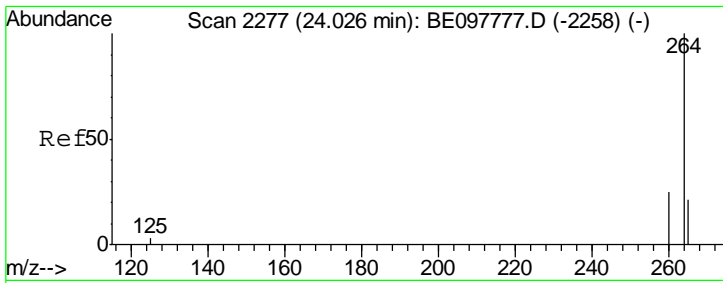
Tgt Ion	Resp	Lower	Upper
244	30728		
212	31.1	25.8	38.8
122	9.3	8.7	13.1



#32
 Bis(2-ethylhexyl)phthalate
 Concen: 0.812 ng
 RT: 21.40 min Scan# 1666
 Delta R.T. -0.01 min
 Lab File: BE097765.D
 Acq: 5 Oct 2018 21:20

Tgt Ion	Resp	Lower	Upper
149	52667		
167	6.7	5.5	8.3
279	1.0	0.9	1.3





#34
 Perylene-d12
 Concen: 0.400 ng
 RT: 24.03 min Scan# 2278
 Delta R.T. -0.01 min
 Lab File: BE097765.D
 Acq: 5 Oct 2018 21:20

Instrument :
 BNA_E
 ClientSampleId :
 RE-120D2-20181002

Tot Ion: 264 Resp: 31484

Ion	Ratio	Lower	Upper
264	100		
260	24.7	19.1	28.7
265	25.9	21.9	32.9

