

Data Path : Z:\SVOASRV\HPCHEM1\BNA E\DATA\BE103118\
 Data File : BE098129.D
 Acq On : 31 Oct 2018 23:15
 Operator : SJ/JU
 Sample : J5701-07
 Misc :
 ALS Vial : 17 Sample Multiplier: 1

Instrument :
 BNA_E
ClientSampled :
 A40J8

Manual Integrations
APPROVED
 Sohil
 11/1/2018 11:08:09 AM

Quant Time: Nov 01 04:06:54 2018
 Quant Method : Z:\SVOASRV\HPCHEM1\BNA E\METHODS\SOM-EPA-SIM-BE102518.M
 Quant Title : ASP BNA STANDARDS FOR 5 POINT CALIBRATION
 QLast Update : Thu Nov 01 02:11:37 2018
 Response via : Initial Calibration

Internal Standards	R.T.	QIon	Response	Conc	Units	Dev(Min)
1) 1,4-Dichlorobenzene-d4	7.87	152	1092	0.40	ng/ul	0.00
2) Naphthalene-d8	10.67	136	5469	0.40	ng/ul	0.00
6) Acenaphthene-d10	14.53	164	3896	0.40	ng/ul	0.00
10) Phenanthrene-d10	17.28	188	8533m	0.40	ng/ul	0.00
16) Chrysene-d12	21.47	240	9354m	0.40	ng/ul	0.00
20) Perylene-d12	24.02	264	8644m	0.40	ng/ul	0.00
System Monitoring Compounds						
4) 2-Methylnaphthalene-d10	12.27	152	3419	0.35	ng/ul	0.00
14) Fluoranthene-d10	19.31	212	10362m	0.37	ng/ul	0.00
Target Compounds						
					Ovalue	
12) Phenanthrene	17.33	178	456m	0.023	ng/ul	
15) Fluoranthene	19.34	202	1215m	0.048	ng/ul	
17) Pyrene	19.71	202	1085	0.050	ng/ul#	75
18) Benzo(a)anthracene	21.45	228	819m	0.030	ng/ul	
19) Chrysene	21.51	228	599m	0.028	ng/ul	

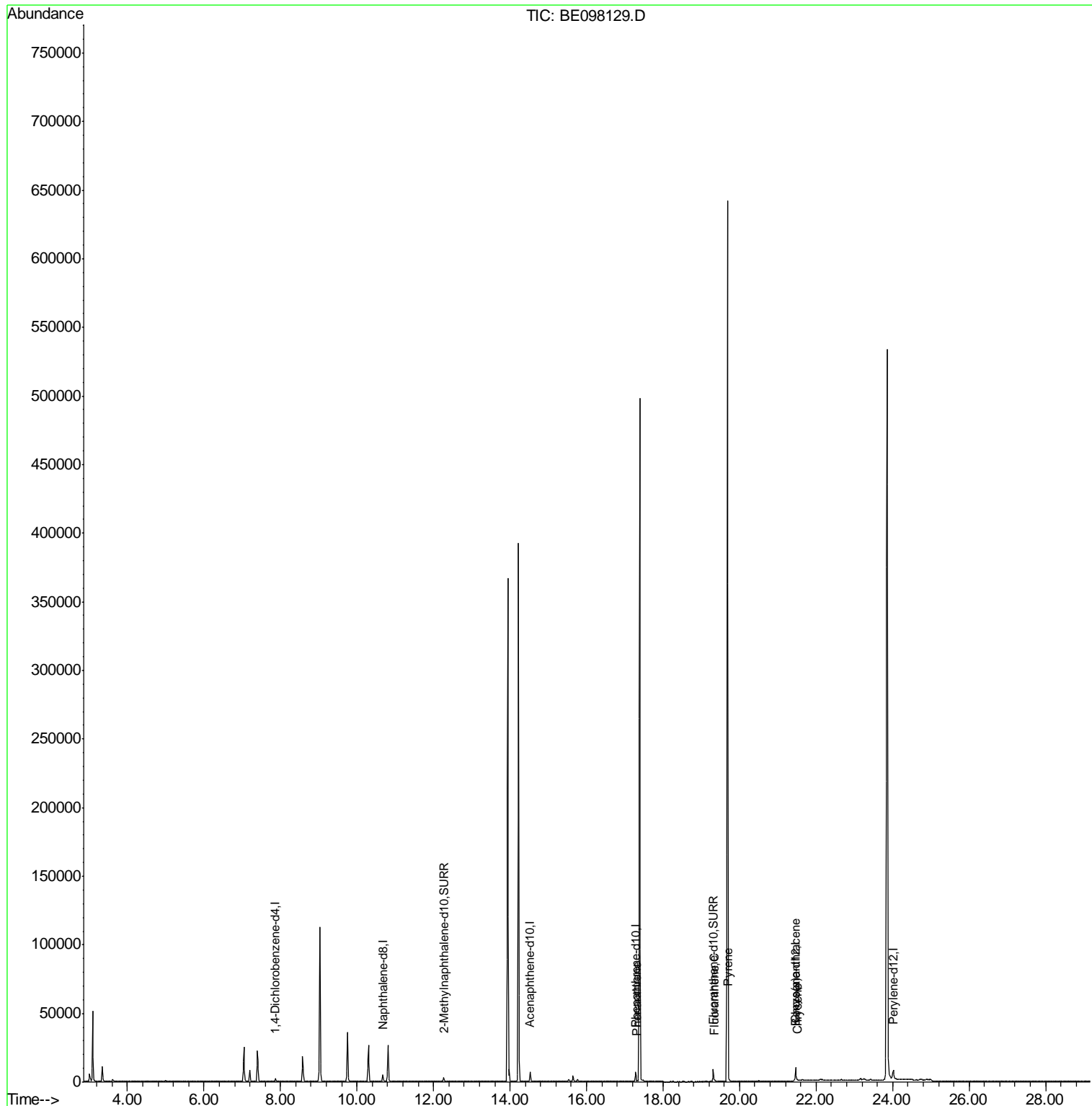
(#) = qualifier out of range (m) = manual integration (+) = signals summed

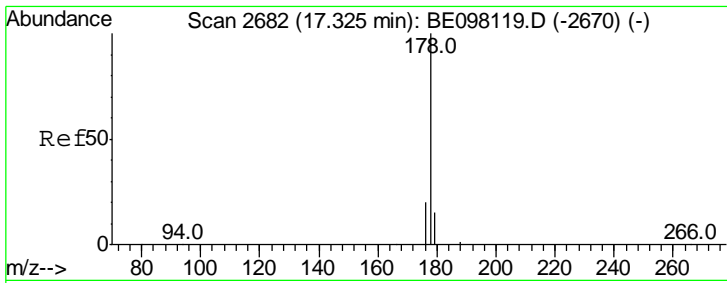
Data Path : Z:\SVOASRV\HPCHEM1\BNA E\DATA\BE103118\
 Data File : BE098129.D
 Acq On : 31 Oct 2018 23:15
 Operator : SJ/JU
 Sample : J5701-07
 Misc :
 ALS Vial : 17 Sample Multiplier: 1

Instrument :
 BNA_E
ClientSampled :
 A40J8

Manual Integrations
APPROVED
 Sohil
 11/1/2018 11:08:09 AM

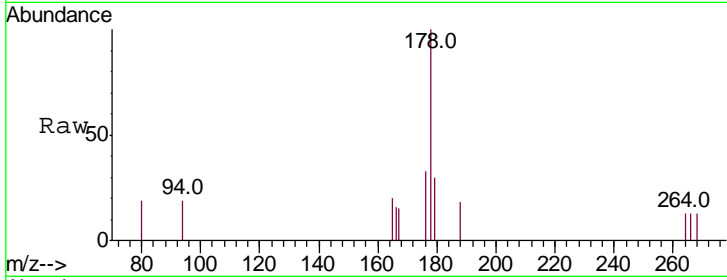
Quant Time: Nov 01 04:06:54 2018
 Quant Method : Z:\SVOASRV\HPCHEM1\BNA E\METHODS\SOM-EPA-SIM-BE102518.M
 Quant Title : ASP BNA STANDARDS FOR 5 POINT CALIBRATION
 QLast Update : Thu Nov 01 02:11:37 2018
 Response via : Initial Calibration





#12
 Phenanthrene
 Concen: 0.023 ng/ul m
 RT: 17.33 min Scan# 2681
 Delta R.T. -0.00 min
 Lab File: BE098129.D
 Acq: 31 Oct 2018 23:15

Instrument :
 BNA_E
 ClientSampled :
 A40J8

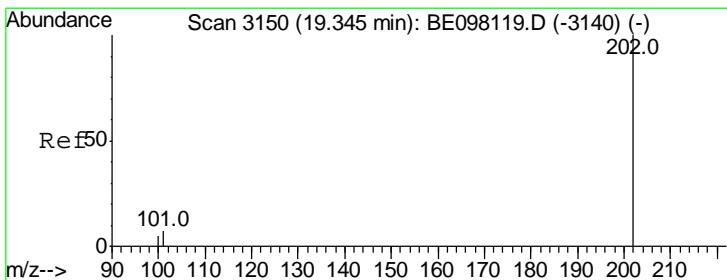
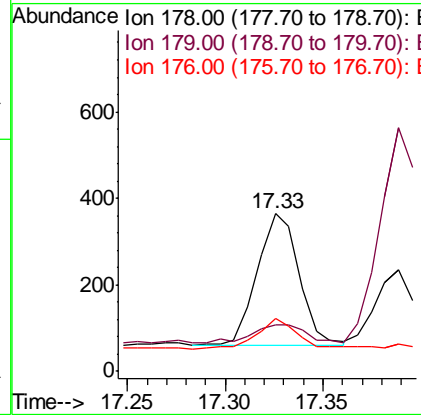
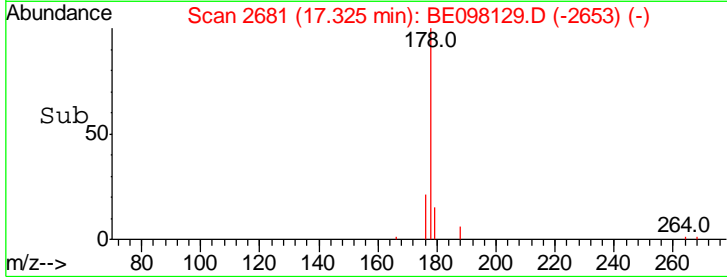


Tgt Ion: 178 Resp: 456

Ion	Ratio	Lower	Upper
178	100		
179	29.7	13.0	19.4#
176	33.2	15.7	23.5#

Manual Integrations
 APPROVED

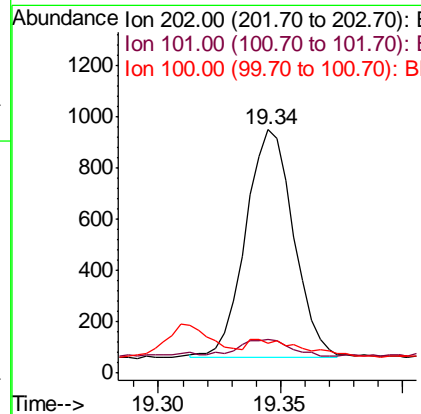
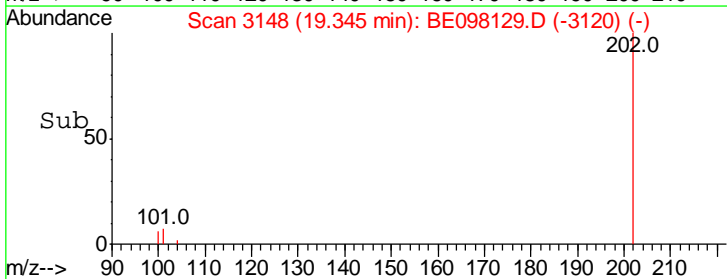
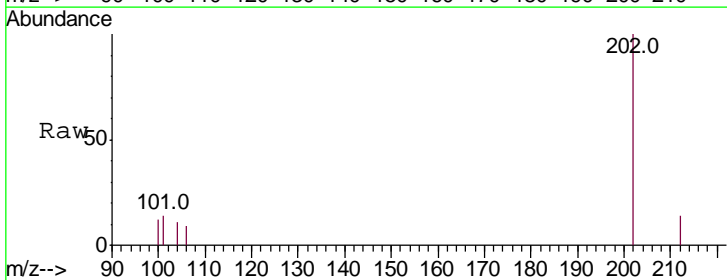
Sohil
 11/1/2018 11:08:09 AM

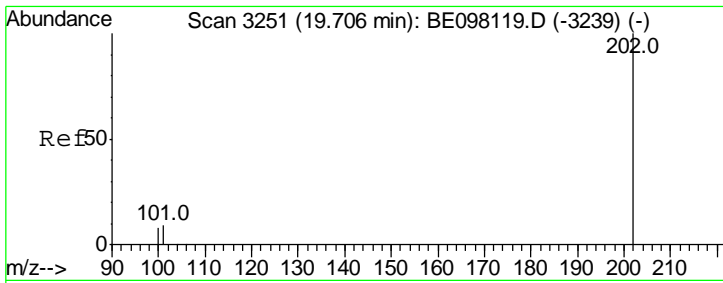


#15
 Fluoranthene
 Concen: 0.048 ng/ul m
 RT: 19.34 min Scan# 3148
 Delta R.T. -0.00 min
 Lab File: BE098129.D
 Acq: 31 Oct 2018 23:15

Tgt Ion: 202 Resp: 1215

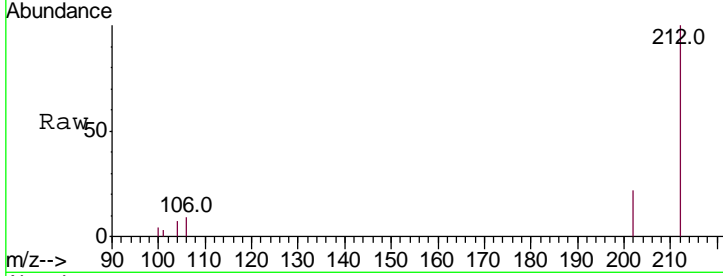
Ion	Ratio	Lower	Upper
202	100		
101	14.0	0.0	27.5
100	12.2	0.0	26.0





#17
 Pyrene
 Concen: 0.050 ng/ul
 RT: 19.71 min Scan# 3250
 Delta R.T. 0.00 min
 Lab File: BE098129.D
 Acq: 31 Oct 2018 23:15

Instrument :
 BNA_E
ClientSampled :
 A40J8

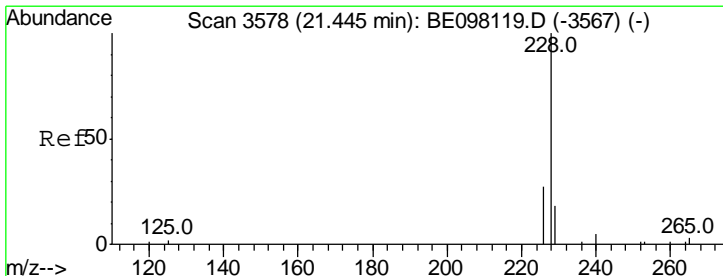
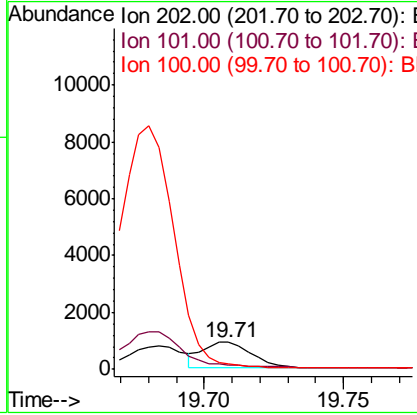
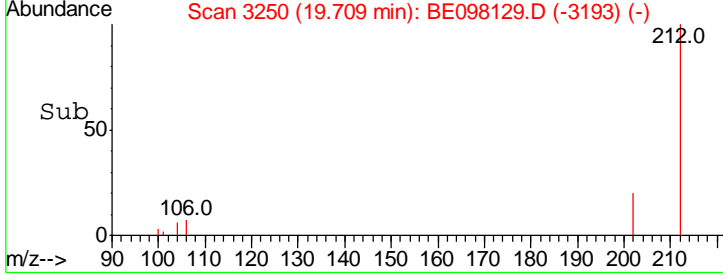


Tgt Ion: 202 Resp: 1085

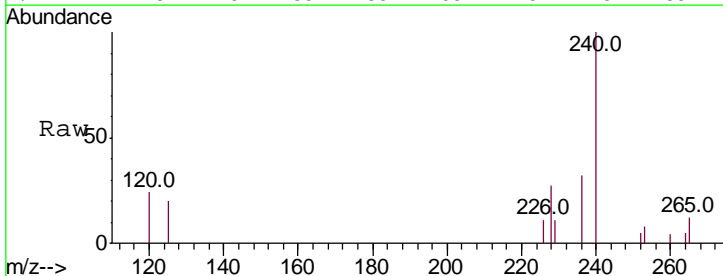
Ion	Ratio	Lower	Upper
202	100		
101	15.8	6.9	10.3#
100	18.4	6.0	9.0#

Manual Integrations
APPROVED

Sohil
 11/1/2018 11:08:09 AM

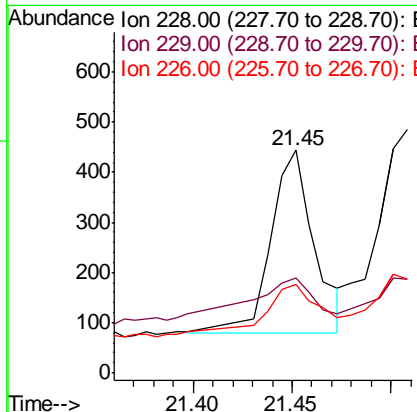
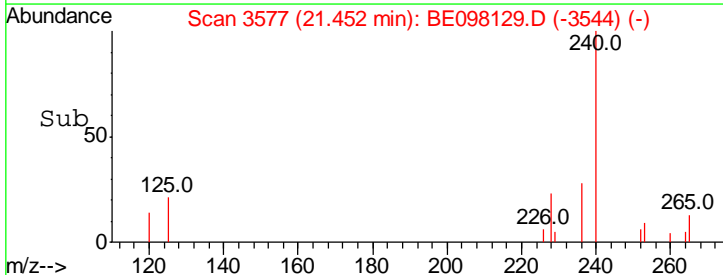


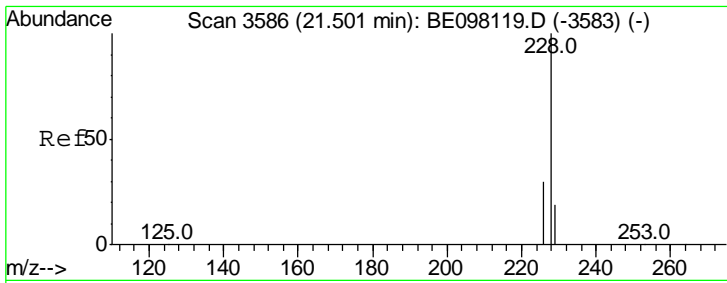
#18
 Benzo(a)anthracene
 Concen: 0.030 ng/ul m
 RT: 21.45 min Scan# 3577
 Delta R.T. 0.01 min
 Lab File: BE098129.D
 Acq: 31 Oct 2018 23:15



Tgt Ion: 228 Resp: 819

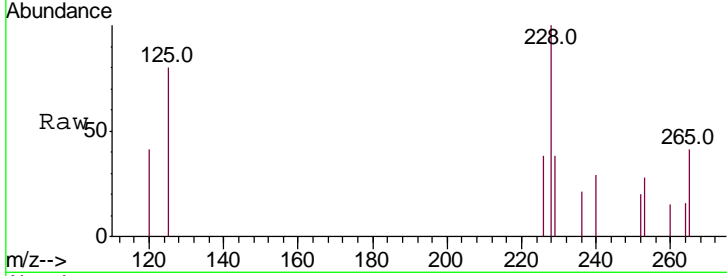
Ion	Ratio	Lower	Upper
228	100		
229	42.3	16.1	24.1#
226	39.9	22.2	33.4#





#19
 Chrysene
 Concen: 0.028 ng/ul m
 RT: 21.51 min Scan# 3585
 Delta R.T. 0.01 min
 Lab File: BE098129.D
 Acq: 31 Oct 2018 23:15

Instrument :
 BNA_E
 ClientSampled :
 A40J8



Tot Ion	Ratio	Lower	Upper
228	100		
226	38.4	24.6	37.0#
229	38.4	16.4	24.6#

Manual Integrations
 APPROVED
 Sohil
 11/1/2018 11:08:09 AM

