

Data Path : Z:\SVOASRV\HPCHEM1\BNA E\DATA\BE103118\
 Data File : BE098132.D
 Acq On : 1 Nov 2018 1:05
 Operator : SJ/JU
 Sample : J5701-11
 Misc :
 ALS Vial : 20 Sample Multiplier: 1

Instrument :
 BNA_E
ClientSampleId :
 A40F7

Manual Integrations
APPROVED
 Sohil
 11/1/2018 11:08:11 AM

Quant Time: Nov 01 04:26:10 2018
 Quant Method : Z:\SVOASRV\HPCHEM1\BNA E\METHODS\SOM-EPA-SIM-BE102518.M
 Quant Title : ASP BNA STANDARDS FOR 5 POINT CALIBRATION
 QLast Update : Thu Nov 01 02:11:37 2018
 Response via : Initial Calibration

Internal Standards	R.T.	QIon	Response	Conc	Units	Dev(Min)
1) 1,4-Dichlorobenzene-d4	7.87	152	983	0.40	ng/ul	0.00
2) Naphthalene-d8	10.67	136	4720	0.40	ng/ul	0.00
6) Acenaphthene-d10	14.53	164	3576	0.40	ng/ul	0.00
10) Phenanthrene-d10	17.29	188	10578	0.40	ng/ul	0.00
16) Chrysene-d12	21.47	240	11193	0.40	ng/ul	0.00
20) Perylene-d12	24.01	264	8234m	0.40	ng/ul	0.00
System Monitoring Compounds						
4) 2-Methylnaphthalene-d10	12.27	152	1426	0.17	ng/ul	0.00
14) Fluoranthene-d10	19.31	212	6691	0.19	ng/ul	0.00
Target Compounds						
9) Fluorene	15.58	166	6772	0.534	ng/ul#	Ovalue 27

(#) = qualifier out of range (m) = manual integration (+) = signals summed

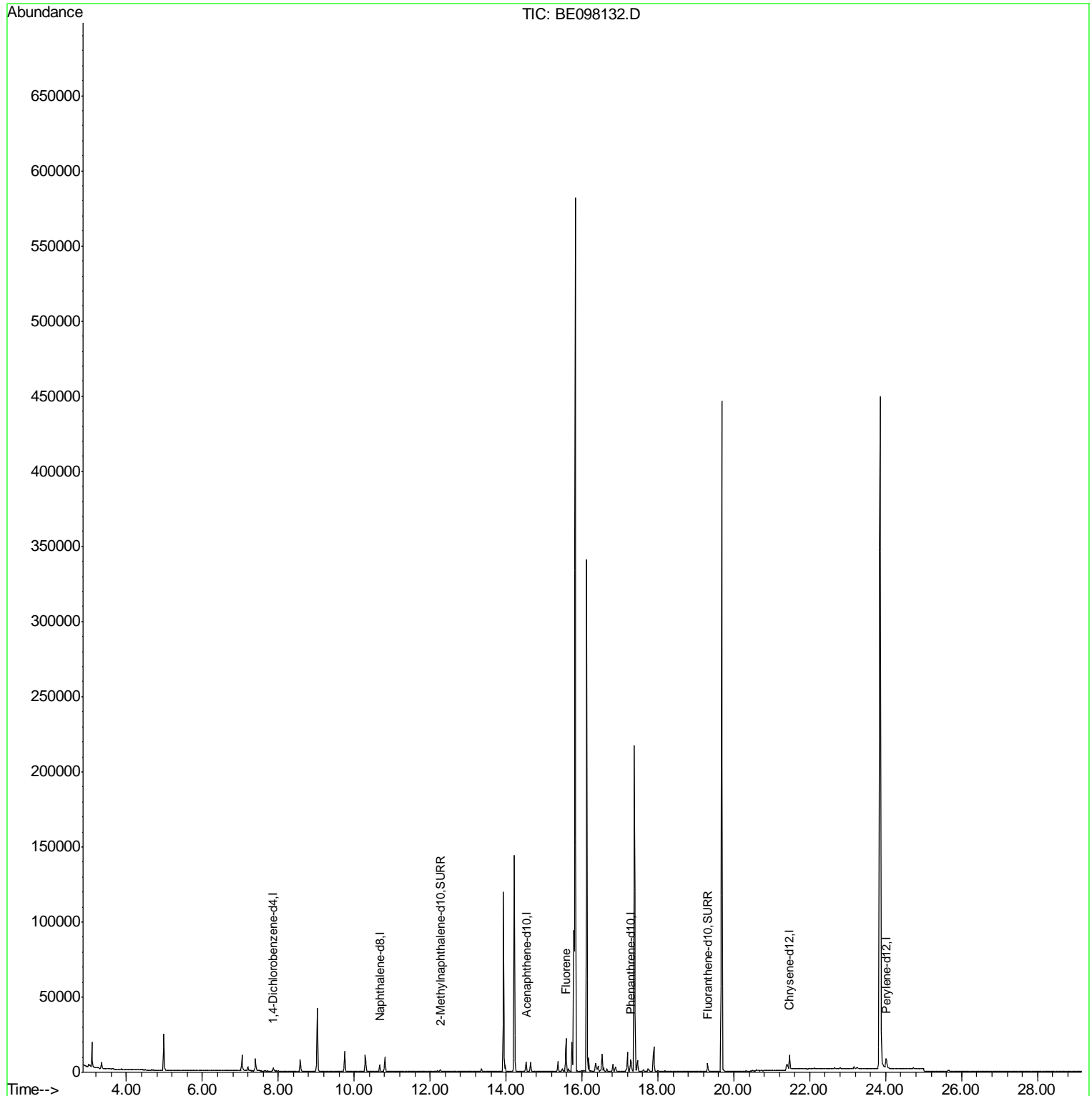
Data Path : Z:\SVOASRV\HPCHEM1\BNA E\DATA\BE103118\
Data File : BE098132.D
Acq On : 1 Nov 2018 1:05
Operator : SJ/JU
Sample : J5701-11
Misc :
ALS Vial : 20 Sample Multiplier: 1

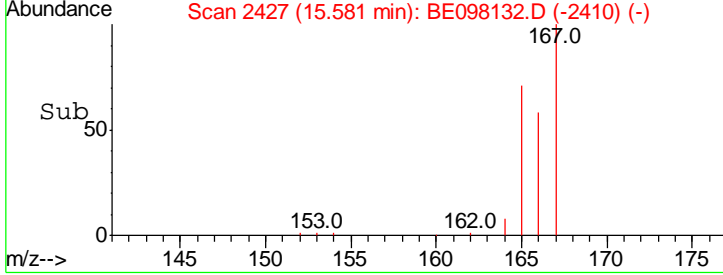
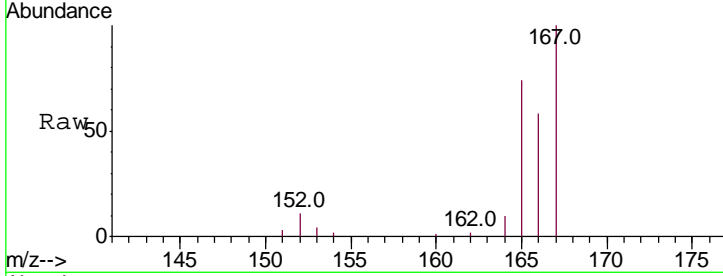
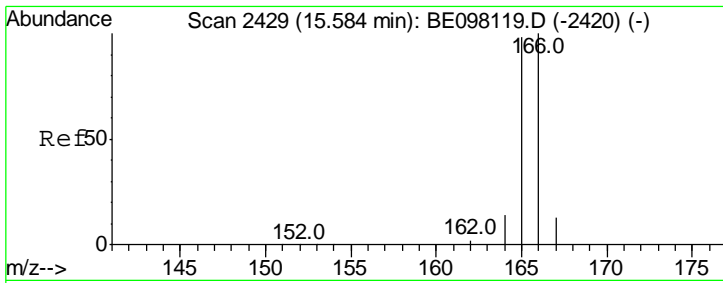
Instrument :
BNA_E
ClientSampleId :
A40F7

Manual Integrations
APPROVED

Sohil
11/1/2018 11:08:11 AM

Quant Time: Nov 01 04:26:10 2018
Quant Method : Z:\SVOASRV\HPCHEM1\BNA E\METHODS\SOM-EPA-SIM-BE102518.M
Quant Title : ASP BNA STANDARDS FOR 5 POINT CALIBRATION
QLast Update : Thu Nov 01 02:11:37 2018
Response via : Initial Calibration





#9
 Fluorene
 Concen: 0.534 ng/ul
 RT: 15.58 min Scan# 2427
 Delta R.T. -0.00 min
 Lab File: BE098132.D
 Acq: 1 Nov 2018 1:05

Tot Ion: 166 Resp: 6772

Ion	Ratio	Lower	Upper
166	100		
165	127.7	80.2	120.4#
167	172.3	12.0	18.0#

Instrument :
 BNA_E
ClientSampled :
 A40F7

Manual Integrations
APPROVED
 Sohil
 11/1/2018 11:08:11 AM

