

Data Path : Z:\SVOASRV\HPCHEM1\BNA E\DATA\BE121318\  
 Data File : BE098399.D  
 Acq On : 13 Dec 2018 16:29  
 Operator : SJ/JU  
 Sample : J6321-02  
 Misc :  
 ALS Vial : 4 Sample Multiplier: 1

Instrument :  
 BNA\_E  
 ClientSampleId :  
 RE123D3-20181207

Quant Time: Dec 13 21:03:52 2018  
 Quant Method : Z:\SVOASRV\HPCHEM1\BNA E\METHODS\8270-SIM-BE121018.M  
 Quant Title : ASP BNA STANDARDS FOR 5 POINT CALIBRATION  
 QLast Update : Mon Dec 10 14:59:55 2018  
 Response via : Initial Calibration

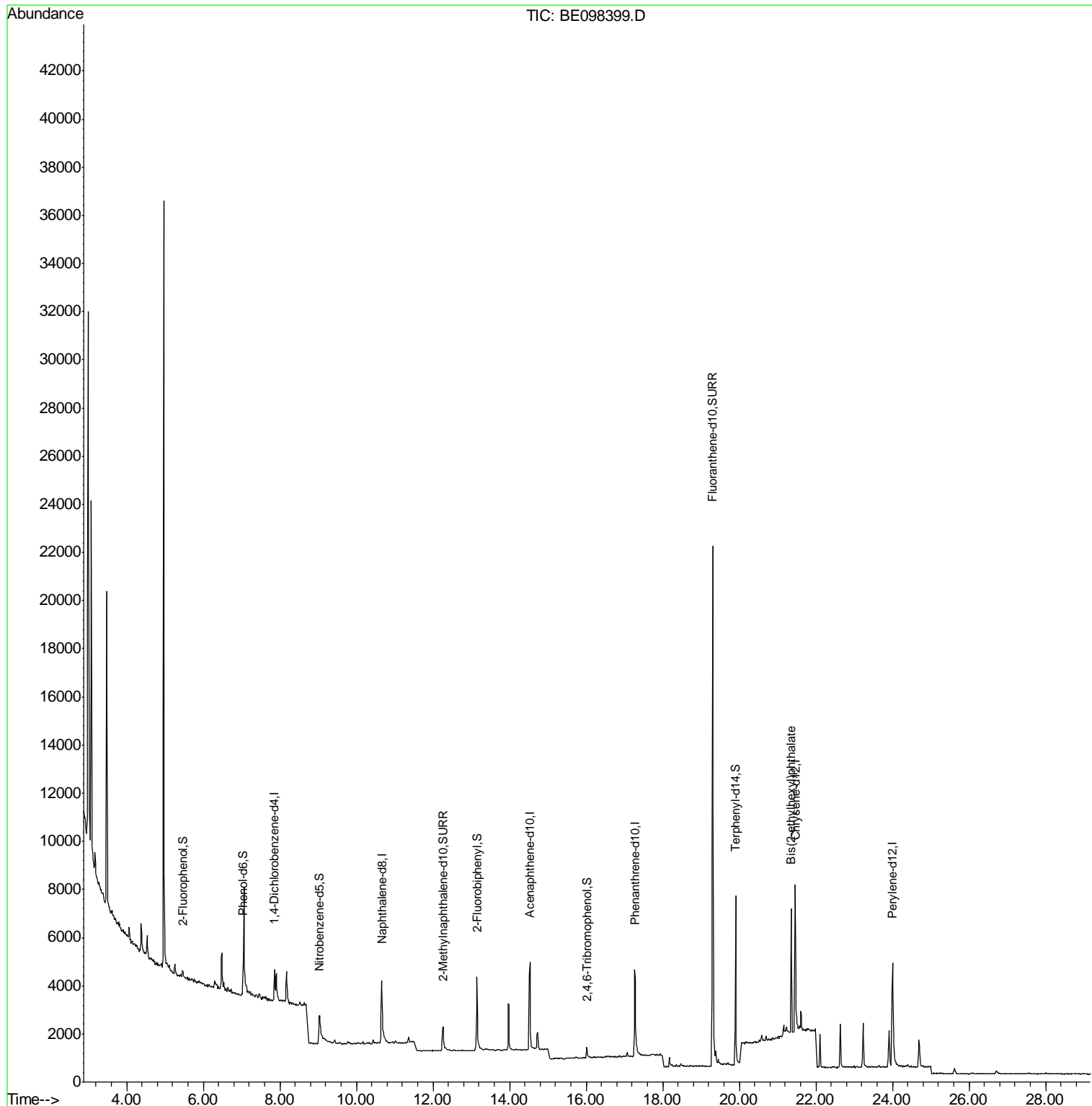
Internal Standards	R.T.	QIon	Response	Conc	Units	Dev(Min)
1) 1,4-Dichlorobenzene-d4	7.86	152	951	0.40	ng	0.00
7) Naphthalene-d8	10.67	136	4011	0.40	ng	0.00
13) Acenaphthene-d10	14.53	164	2655	0.40	ng	0.00
19) Phenanthrene-d10	17.27	188	6914	0.40	ng	-0.01
27) Chrysene-d12	21.46	240	8460	0.40	ng	0.00
34) Perylene-d12	24.00	264	8219	0.40	ng	-0.01
System Monitoring Compounds						
4) 2-Fluorophenol	5.46	112	274	0.12	ng	0.01
5) Phenol-d6	7.04	99	252	0.08	ng	-0.01
8) Nitrobenzene-d5	9.04	82	1111	0.30	ng	0.03
11) 2-Methylnaphthalene-d10	12.27	152	2045	0.31	ng	0.00
14) 2,4,6-Tribromophenol	16.02	330	332	0.34	ng	0.00
15) 2-Fluorobiphenyl	13.15	172	3884	0.35	ng	0.00
25) Fluoranthene-d10	19.30	212	31647	0.36	ng	0.00
29) Terphenyl-d14	19.90	244	6840	0.33	ng	0.00
Target Compounds						Qvalue
32) Bis(2-ethylhexyl)phthalate	21.35	149	6450	0.132	ng	99

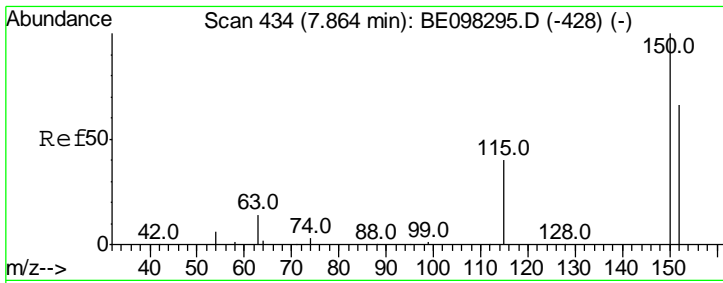
(#) = qualifier out of range (m) = manual integration (+) = signals summed

Data Path : Z:\SVOASRV\HPCHEM1\BNA E\DATA\BE121318\  
 Data File : BE098399.D  
 Acq On : 13 Dec 2018 16:29  
 Operator : SJ/JU  
 Sample : J6321-02  
 Misc :  
 ALS Vial : 4 Sample Multiplier: 1

Instrument :  
 BNA\_E  
 ClientSampleId :  
 RE123D3-20181207

Quant Time: Dec 13 21:03:52 2018  
 Quant Method : Z:\SVOASRV\HPCHEM1\BNA E\METHODS\8270-SIM-BE121018.M  
 Quant Title : ASP BNA STANDARDS FOR 5 POINT CALIBRATION  
 QLast Update : Mon Dec 10 14:59:55 2018  
 Response via : Initial Calibration

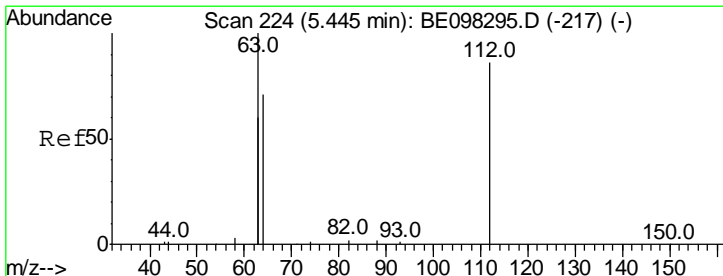
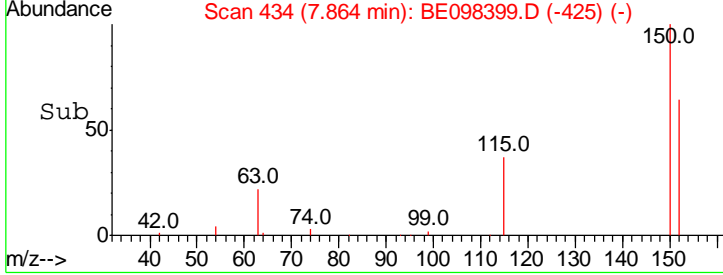
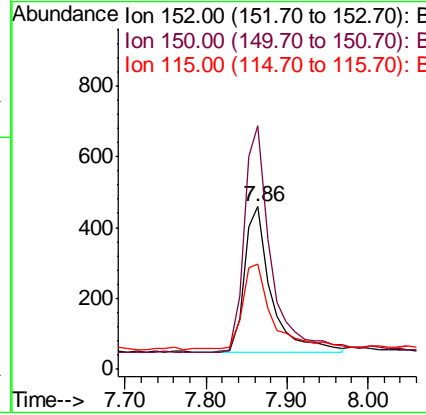
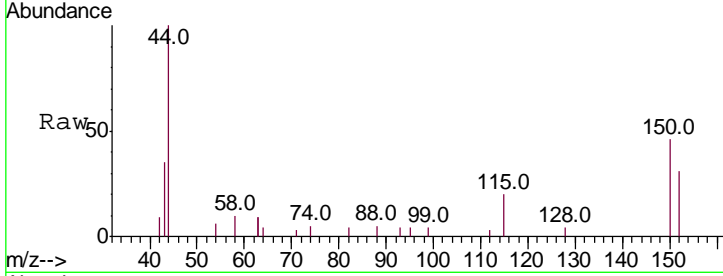




#1  
 1,4-Dichlorobenzene-d4  
 Concen: 0.400 ng  
 RT: 7.86 min Scan# 434  
 Delta R.T. 0.00 min  
 Lab File: BE098399.D  
 Acq: 13 Dec 2018 16:29

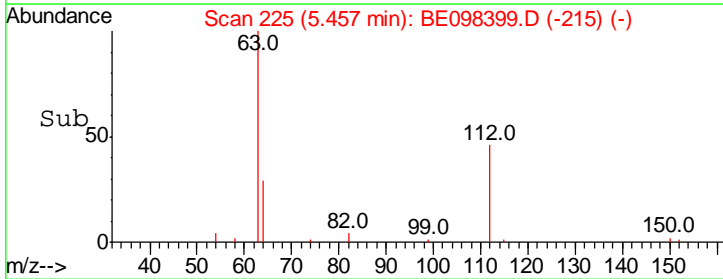
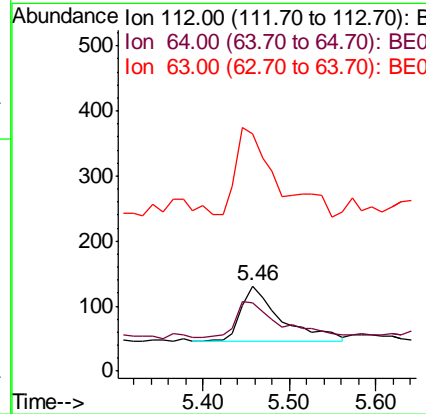
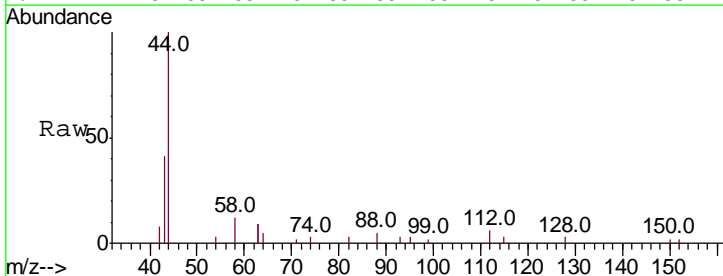
Instrument :  
 BNA\_E  
 ClientSampleId :  
 RE123D3-20181207

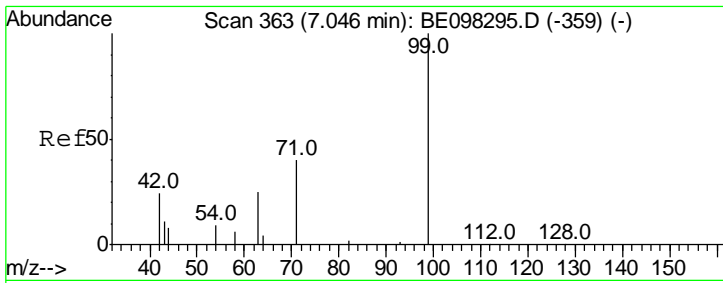
Tgt Ion	Resp	Lower	Upper
152	100		
150	150.0	124.2	186.4
115	64.6	53.9	80.9



#4  
 2-Fluorophenol  
 Concen: 0.123 ng  
 RT: 5.46 min Scan# 225  
 Delta R.T. 0.01 min  
 Lab File: BE098399.D  
 Acq: 13 Dec 2018 16:29

Tgt Ion	Resp	Lower	Upper
112	100		
64	70.1	59.8	89.8
63	131.0	133.7	200.5#

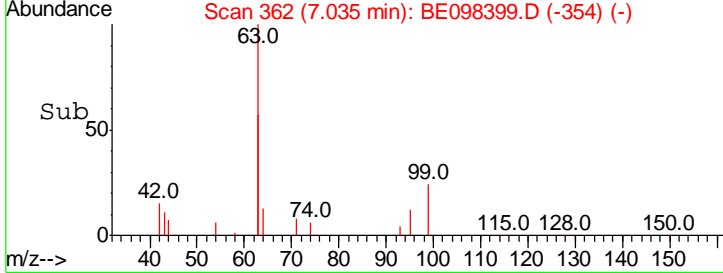
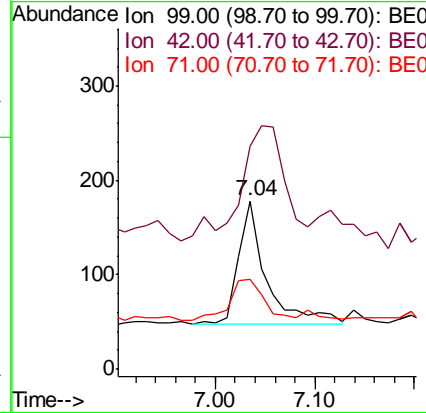
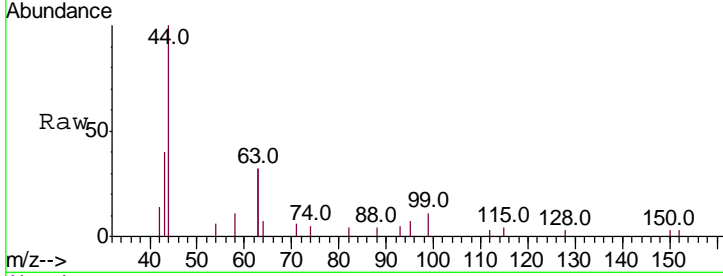




#5  
 Phenol-d6  
 Concen: 0.080 ng  
 RT: 7.04 min Scan# 362  
 Delta R.T. -0.01 min  
 Lab File: BE098399.D  
 Acq: 13 Dec 2018 16:29

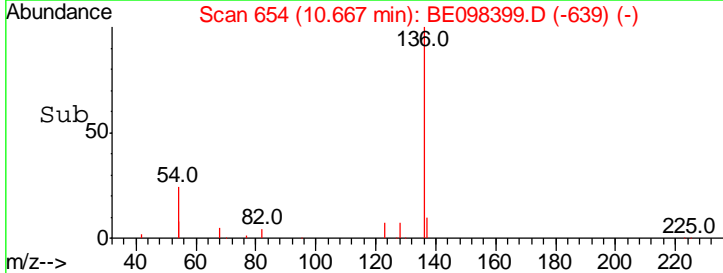
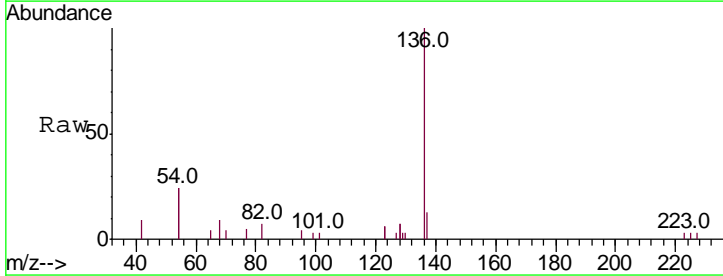
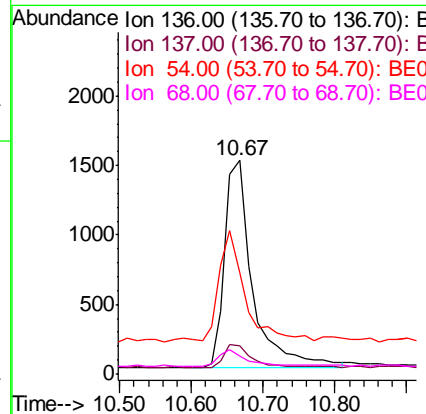
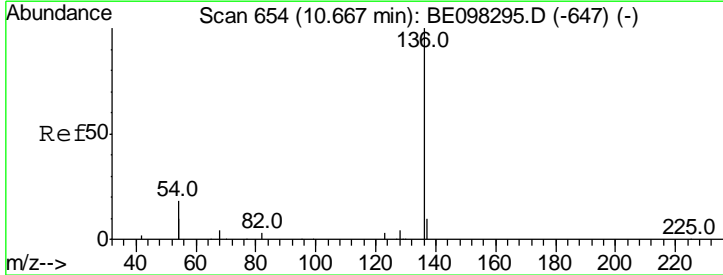
**Instrument :**  
 BNA\_E  
**ClientSampleId :**  
 RE123D3-20181207

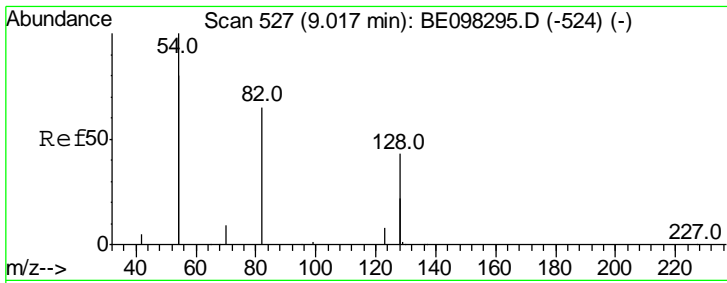
Tgt Ion	Resp	Lower	Upper
99	100		
42	154.8	26.3	39.5#
71	41.3	33.6	50.4



#7  
 Naphthalene-d8  
 Concen: 0.400 ng  
 RT: 10.67 min Scan# 654  
 Delta R.T. 0.00 min  
 Lab File: BE098399.D  
 Acq: 13 Dec 2018 16:29

Tgt Ion	Resp	Lower	Upper
136	100		
137	13.3	9.2	13.8
54	47.4	28.4	42.6#
68	8.5	5.4	8.0#

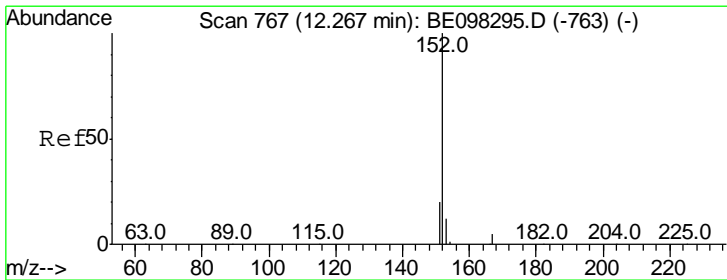
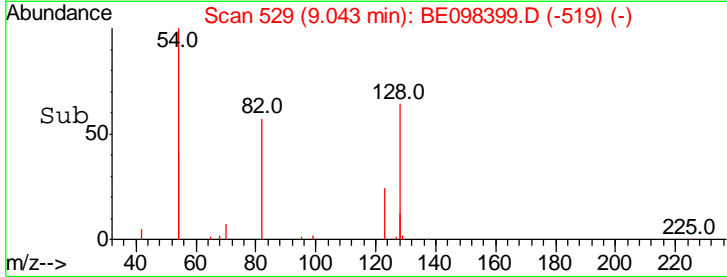
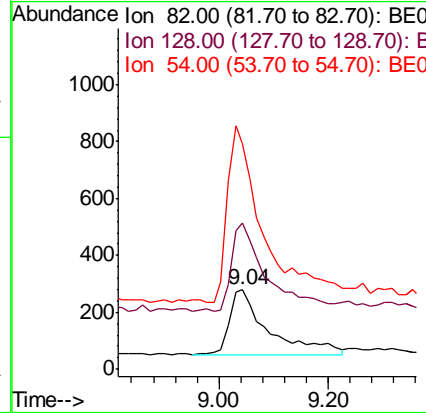
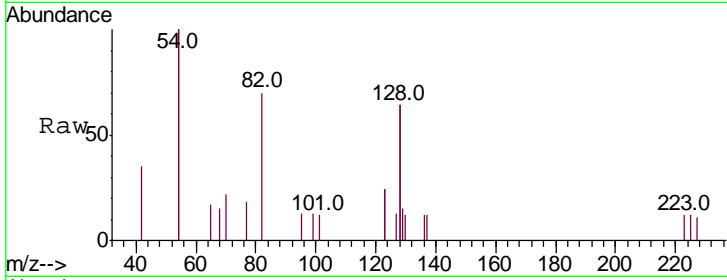




#8  
 Nitrobenzene-d5  
 Concen: 0.304 ng  
 RT: 9.04 min Scan# 529  
 Delta R.T. 0.03 min  
 Lab File: BE098399.D  
 Acq: 13 Dec 2018 16:29

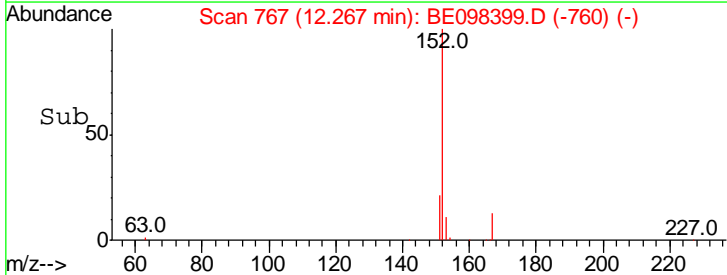
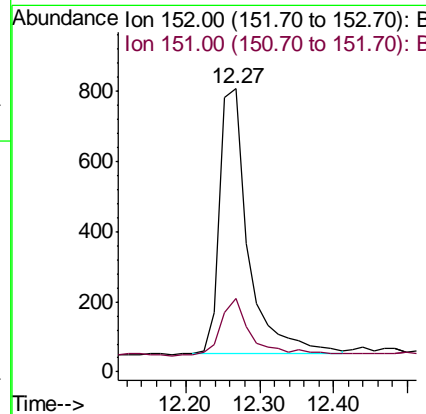
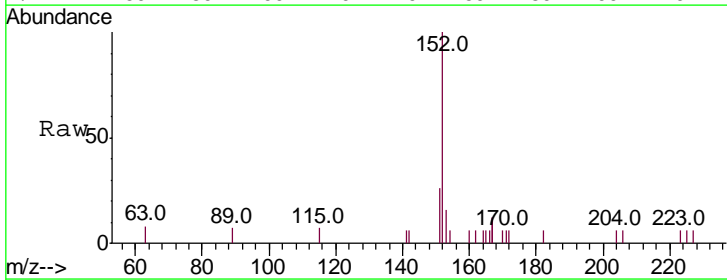
**Instrument :**  
 BNA\_E  
**ClientSampleId :**  
 RE123D3-20181207

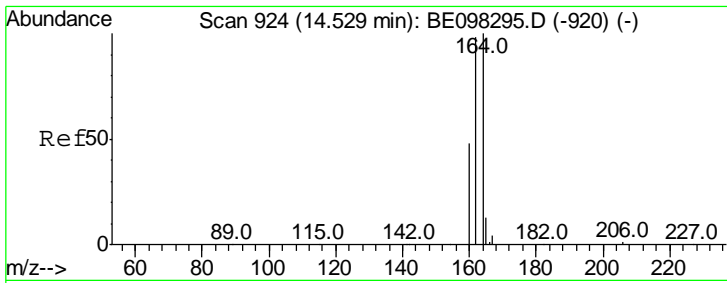
Tgt Ion	Resp	Lower	Upper
82	100		
128	183.5	102.4	153.6#
54	284.6	221.8	332.8



#11  
 2-Methylnaphthalene-d10  
 Concen: 0.314 ng  
 RT: 12.27 min Scan# 767  
 Delta R.T. 0.00 min  
 Lab File: BE098399.D  
 Acq: 13 Dec 2018 16:29

Tgt Ion	Resp	Lower	Upper
152	100		
151	22.1	16.2	24.4

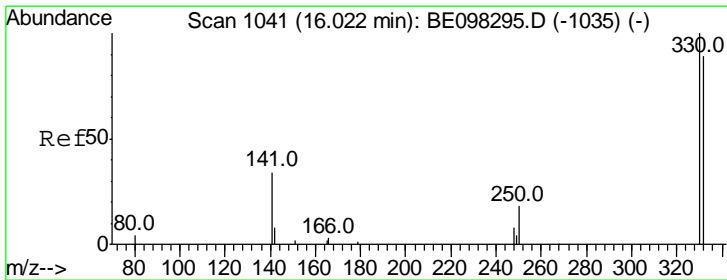
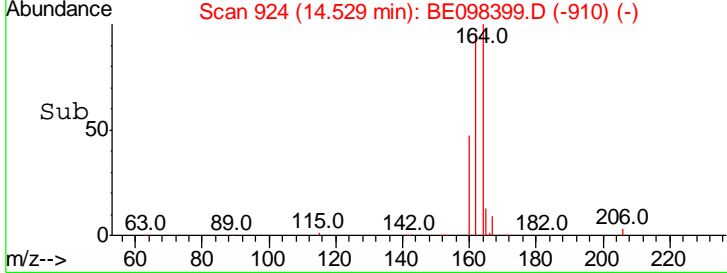
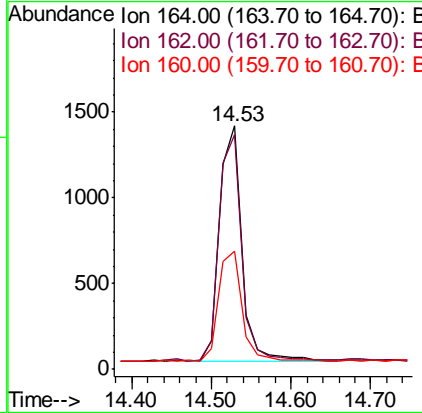
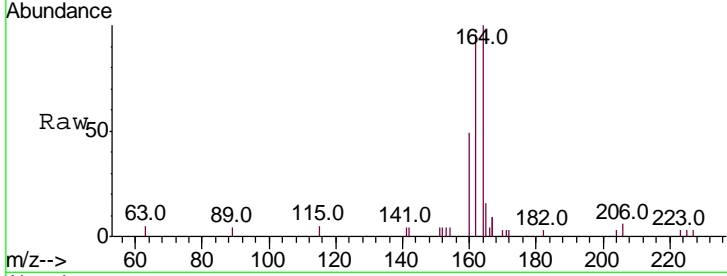




#13  
 Acenaphthene-d10  
 Concen: 0.400 ng  
 RT: 14.53 min Scan# 924  
 Delta R.T. 0.00 min  
 Lab File: BE098399.D  
 Acq: 13 Dec 2018 16:29

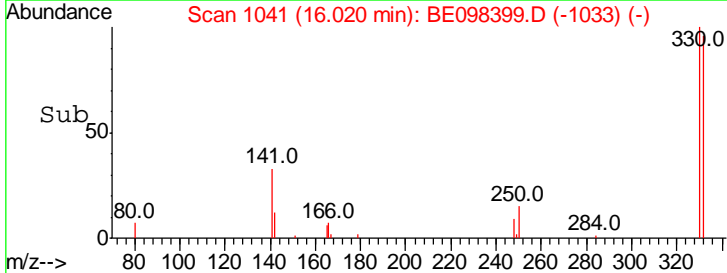
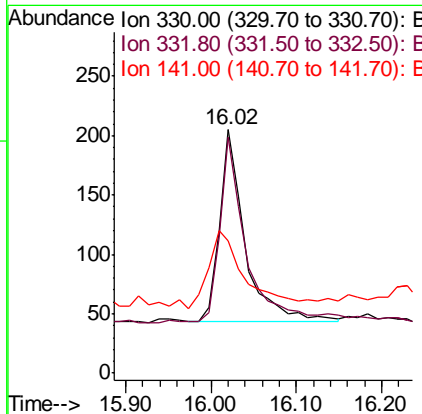
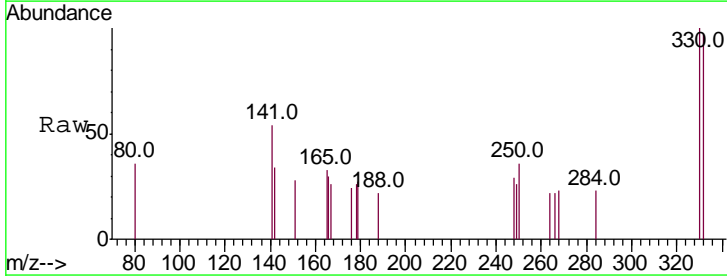
Instrument :  
 BNA\_E  
 ClientSampleId :  
 RE123D3-20181207

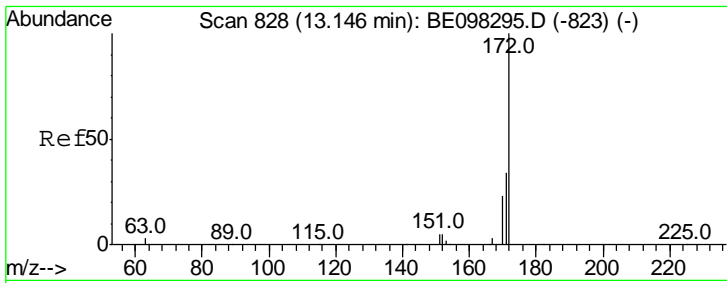
Tgt Ion	Resp	Lower	Upper
164	100		
162	96.1	77.6	116.4
160	48.6	36.0	54.0



#14  
 2,4,6-Tribromophenol  
 Concen: 0.341 ng  
 RT: 16.02 min Scan# 1041  
 Delta R.T. -0.00 min  
 Lab File: BE098399.D  
 Acq: 13 Dec 2018 16:29

Tgt Ion	Resp	Lower	Upper
330	100		
332	101.2	76.2	114.4
141	55.7	39.0	58.4

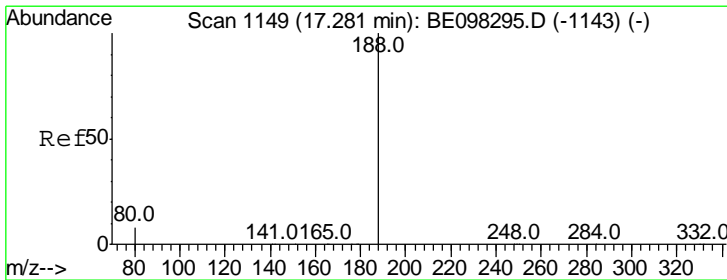
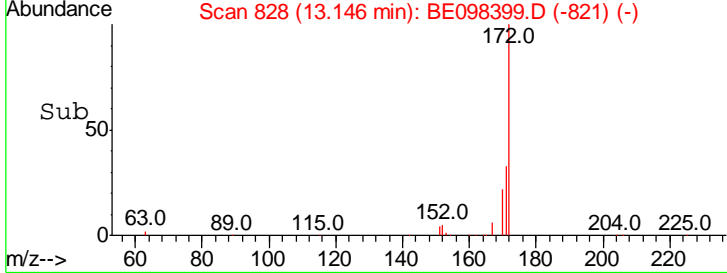
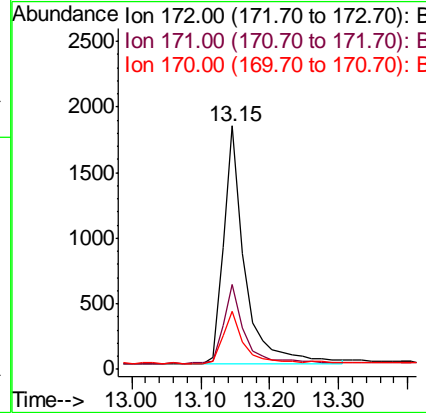
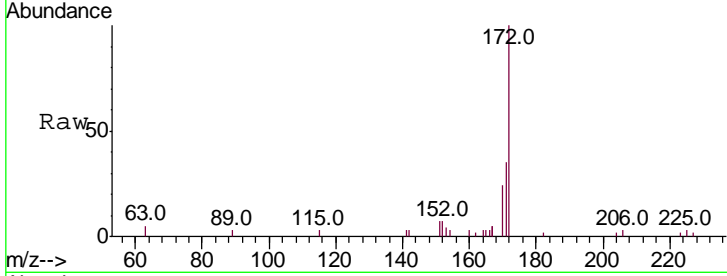




#15  
 2-Fluorobiphenyl  
 Concen: 0.347 ng  
 RT: 13.15 min Scan# 828  
 Delta R.T. 0.00 min  
 Lab File: BE098399.D  
 Acq: 13 Dec 2018 16:29

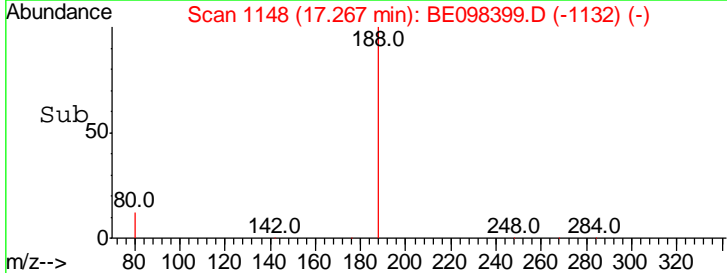
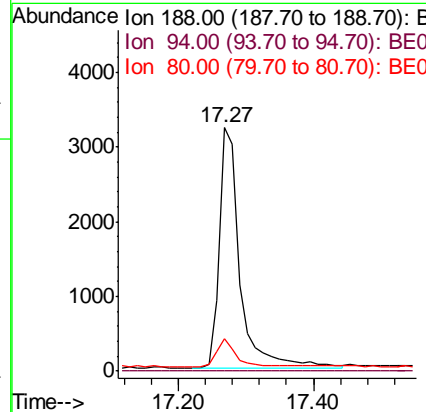
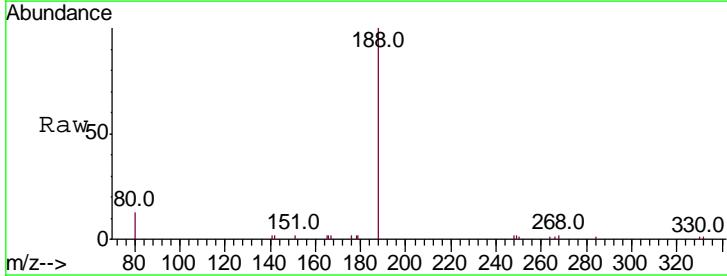
Instrument :  
 BNA\_E  
 ClientSampleId :  
 RE123D3-20181207

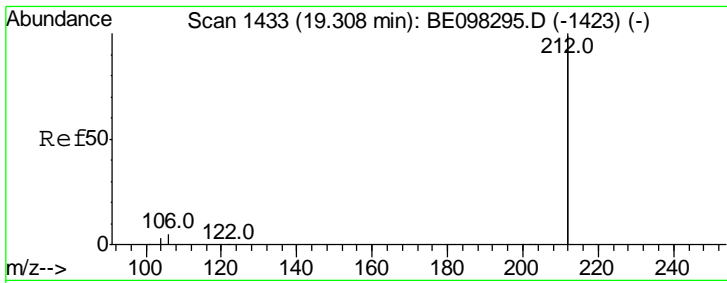
Tgt Ion	Resp	Lower	Upper
172	100		
171	34.8	27.5	41.3
170	24.0	19.6	29.4



#19  
 Phenanthrene-d10  
 Concen: 0.400 ng  
 RT: 17.27 min Scan# 1148  
 Delta R.T. -0.01 min  
 Lab File: BE098399.D  
 Acq: 13 Dec 2018 16:29

Tgt Ion	Resp	Lower	Upper
188	100		
94	0.0	0.0	0.0
80	13.5	7.2	10.8#

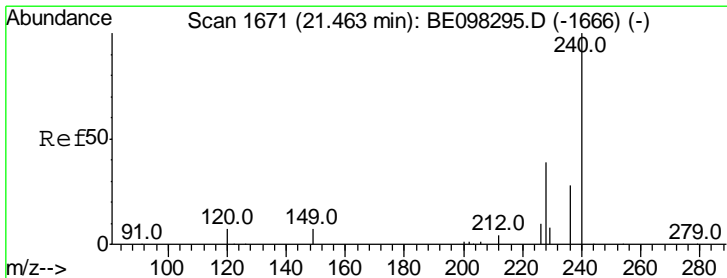
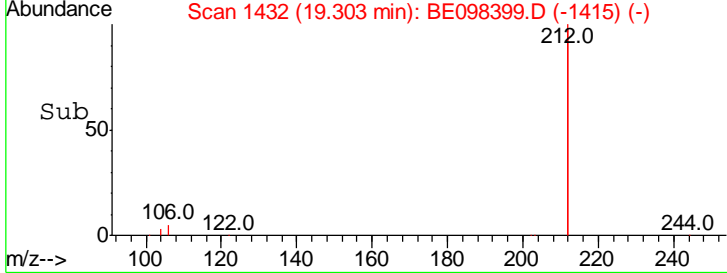
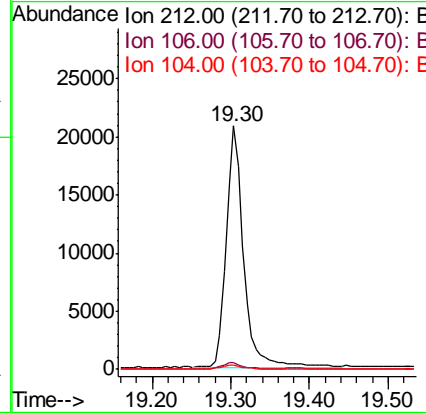
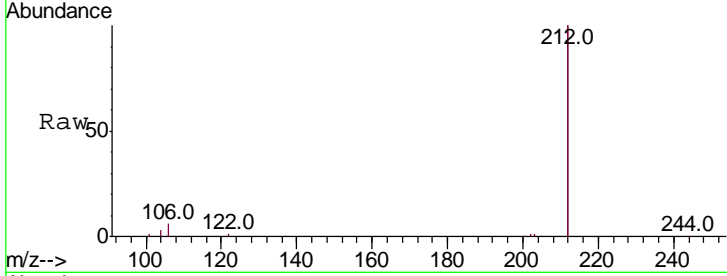




#25  
 Fluoranthene-d10  
 Concen: 0.357 ng  
 RT: 19.30 min Scan# 1432  
 Delta R.T. -0.01 min  
 Lab File: BE098399.D  
 Acq: 13 Dec 2018 16:29

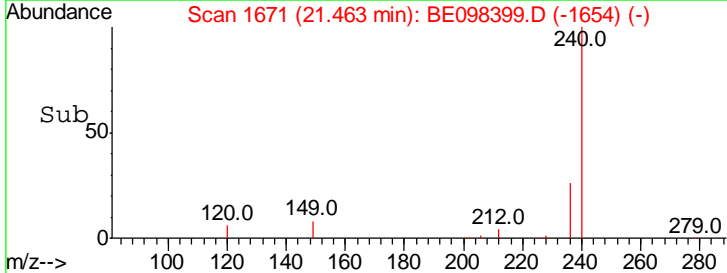
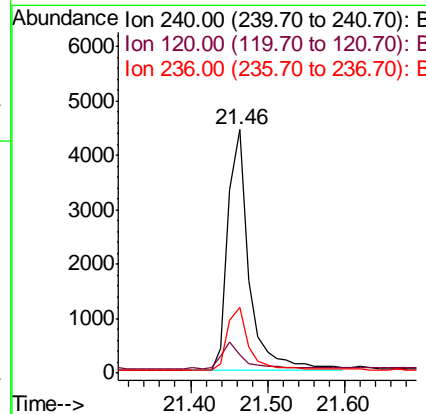
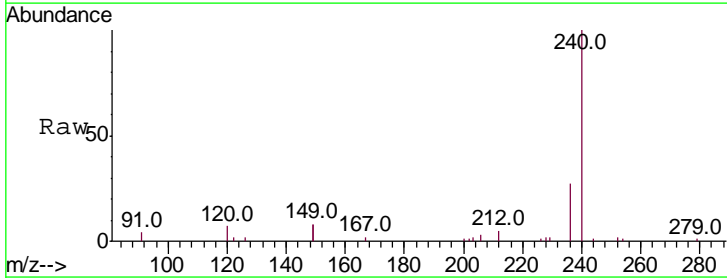
Instrument :  
 BNA\_E  
 ClientSampleId :  
 RE123D3-20181207

Tgt Ion	Resp	Lower	Upper
212	100		
106	2.6	2.2	3.2
104	1.5	1.3	1.9

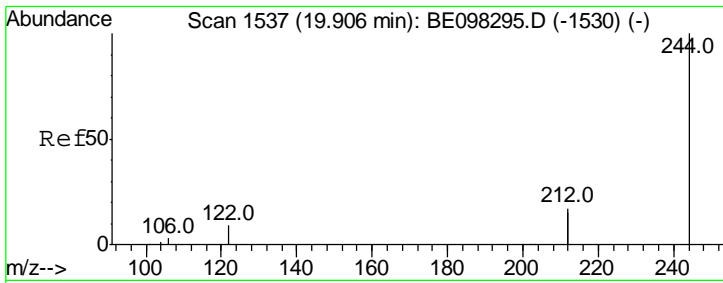


#27  
 Chrysene-d12  
 Concen: 0.400 ng  
 RT: 21.46 min Scan# 1671  
 Delta R.T. 0.00 min  
 Lab File: BE098399.D  
 Acq: 13 Dec 2018 16:29

Tgt Ion	Resp	Lower	Upper
240	100		
120	7.3	9.5	14.3#
236	27.2	22.7	34.1



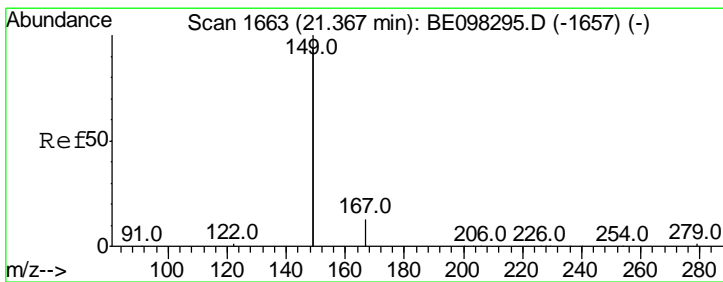
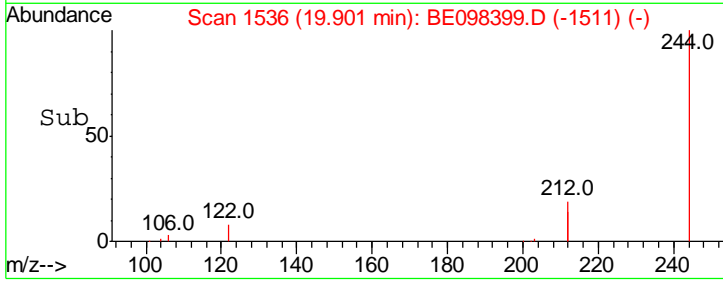
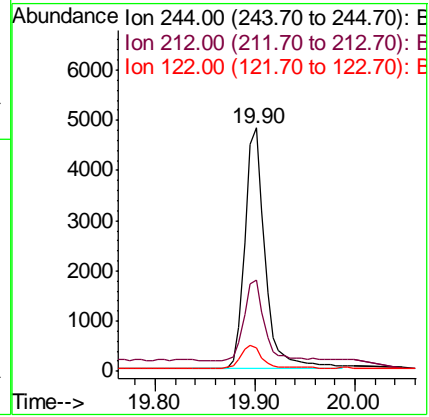
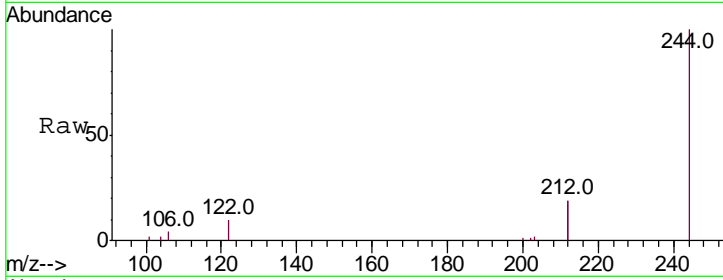




#29  
 Terphenyl-d14  
 Concen: 0.333 ng  
 RT: 19.90 min Scan# 1536  
 Delta R.T. -0.01 min  
 Lab File: BE098399.D  
 Acq: 13 Dec 2018 16:29

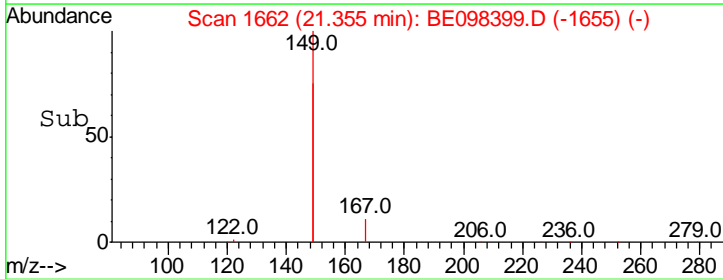
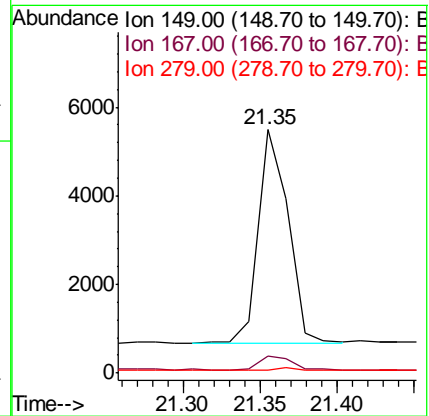
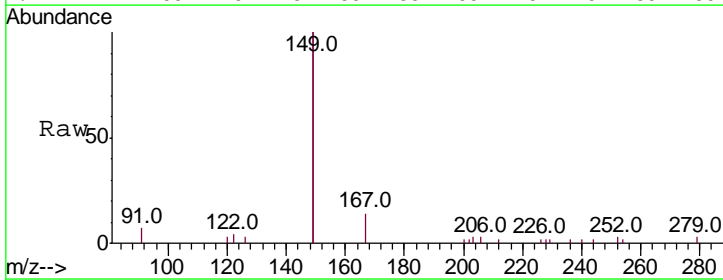
Instrument :  
 BNA\_E  
 ClientSampleId :  
 RE123D3-20181207

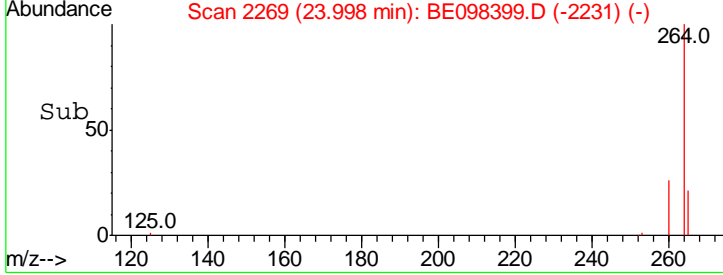
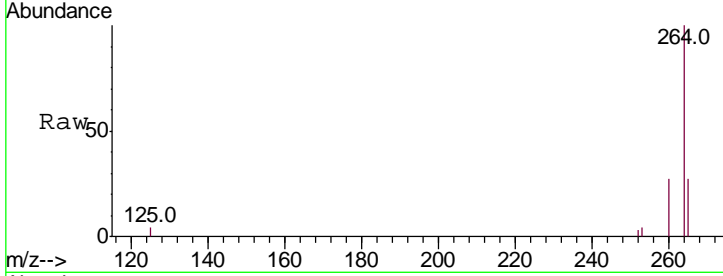
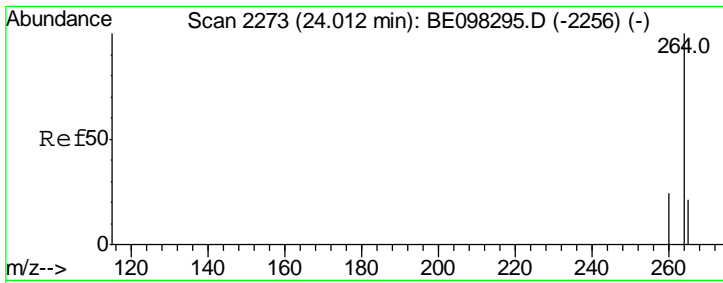
Tgt Ion	Resp	Lower	Upper
244	100		
212	37.2	27.4	41.0
122	9.6	8.3	12.5



#32  
 Bis(2-ethylhexyl)phthalate  
 Concen: 0.132 ng  
 RT: 21.35 min Scan# 1662  
 Delta R.T. -0.01 min  
 Lab File: BE098399.D  
 Acq: 13 Dec 2018 16:29

Tgt Ion	Resp	Lower	Upper
149	100		
167	7.6	5.7	8.5
279	1.3	1.0	1.4





#34  
 Perylene-d12  
 Concen: 0.400 ng  
 RT: 24.00 min Scan# 2269  
 Delta R.T. -0.01 min  
 Lab File: BE098399.D  
 Acq: 13 Dec 2018 16:29

Instrument :  
 BNA\_E  
 ClientSampleId :  
 RE123D3-20181207

Tot Ion: 264 Resp: 8219

Ion	Ratio	Lower	Upper
264	100		
260	27.1	20.2	30.2
265	27.1	25.2	37.8

