

Data Path : Z:\SVOASRV\HPCHEM1\BNA E\DATA\BE121318\
 Data File : BE098426.D
 Acq On : 14 Dec 2018 9:05
 Operator : SJ/JU
 Sample : J6335-16
 Misc :
 ALS Vial : 29 Sample Multiplier: 1

Instrument :
 BNA_E
 ClientSampleId :
 BP-EB03-20181208

Quant Time: Dec 14 10:16:15 2018
 Quant Method : Z:\SVOASRV\HPCHEM1\BNA E\METHODS\8270-SIM-BE121018.M
 Quant Title : ASP BNA STANDARDS FOR 5 POINT CALIBRATION
 QLast Update : Mon Dec 10 14:59:55 2018
 Response via : Initial Calibration

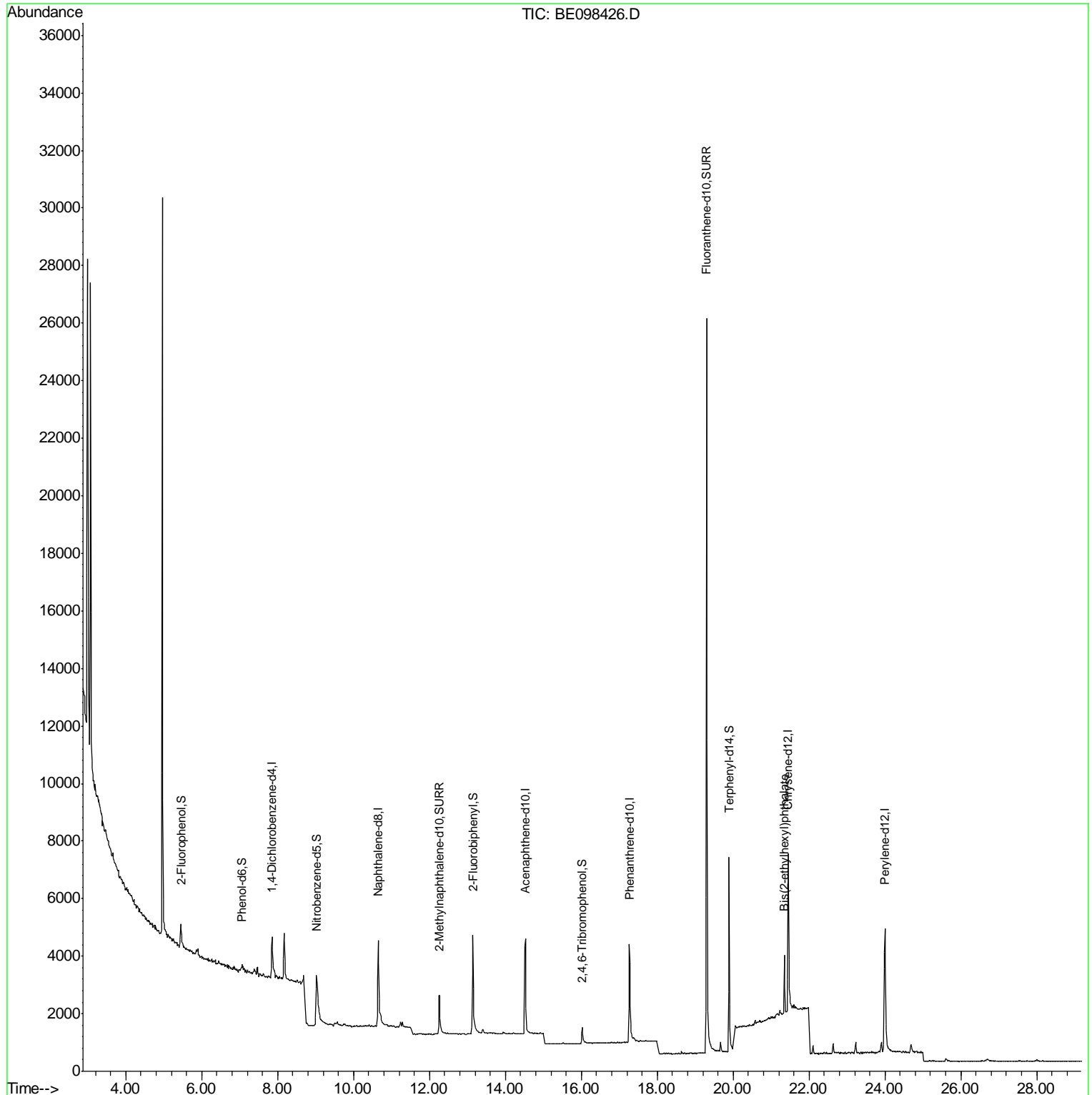
Internal Standards	R.T.	QIon	Response	Conc	Units	Dev(Min)
1) 1,4-Dichlorobenzene-d4	7.86	152	958	0.40	ng	0.00
7) Naphthalene-d8	10.65	136	4246	0.40	ng	-0.01
13) Acenaphthene-d10	14.53	164	2703	0.40	ng	0.00
19) Phenanthrene-d10	17.27	188	6534	0.40	ng	-0.01
27) Chrysene-d12	21.45	240	8098	0.40	ng	-0.01
34) Perylene-d12	24.00	264	7789	0.40	ng	-0.01
System Monitoring Compounds						
4) 2-Fluorophenol	5.45	112	578	0.26	ng	0.00
5) Phenol-d6	7.06	99	448	0.14	ng	0.00
8) Nitrobenzene-d5	9.03	82	1465	0.38	ng	0.01
11) 2-Methylnaphthalene-d10	12.25	152	2889	0.42	ng	-0.01
14) 2,4,6-Tribromophenol	16.02	330	506	0.51	ng	0.00
15) 2-Fluorobiphenyl	13.15	172	4785	0.42	ng	0.00
25) Fluoranthene-d10	19.30	212	39728	0.47	ng	0.00
29) Terphenyl-d14	19.89	244	6829	0.35	ng	-0.01
Target Compounds						Qvalue
32) Bis(2-ethylhexyl)phthalate	21.35	149	2346	0.050	ng	# 97

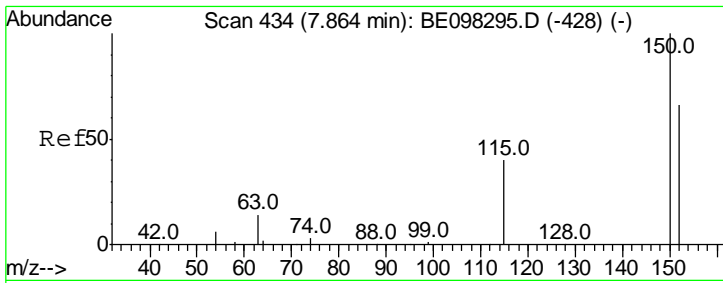
(#) = qualifier out of range (m) = manual integration (+) = signals summed

Data Path : Z:\SVOASRV\HPCHEM1\BNA E\DATA\BE121318\
Data File : BE098426.D
Acq On : 14 Dec 2018 9:05
Operator : SJ/JU
Sample : J6335-16
Misc :
ALS Vial : 29 Sample Multiplier: 1

Instrument :
BNA_E
ClientSampled :
BP-EB03-20181208

Quant Time: Dec 14 10:16:15 2018
Quant Method : Z:\SVOASRV\HPCHEM1\BNA E\METHODS\8270-SIM-BE121018.M
Quant Title : ASP BNA STANDARDS FOR 5 POINT CALIBRATION
QLast Update : Mon Dec 10 14:59:55 2018
Response via : Initial Calibration

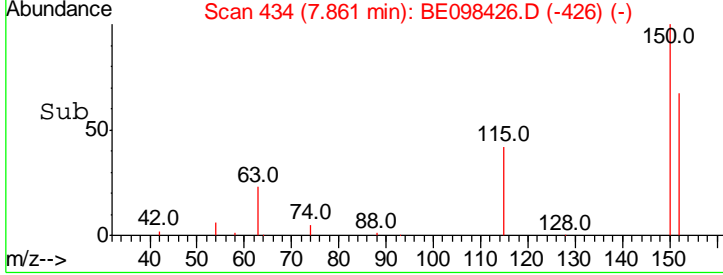
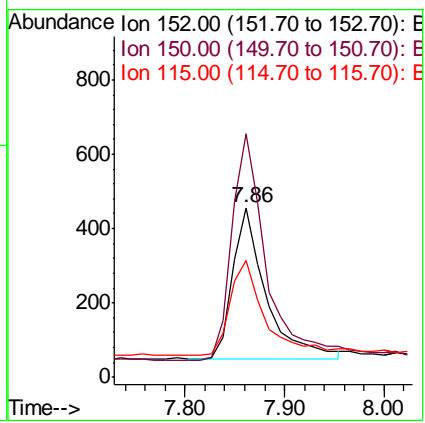
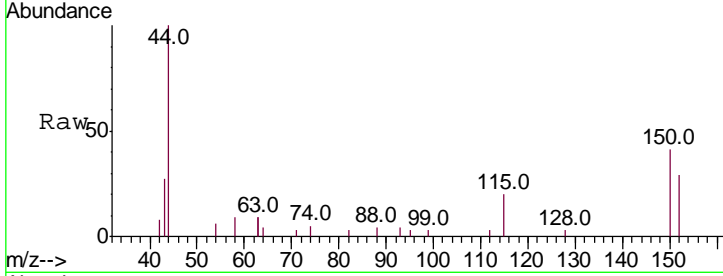




#1
 1,4-Dichlorobenzene-d4
 Concen: 0.400 ng
 RT: 7.86 min Scan# 434
 Delta R.T. -0.00 min
 Lab File: BE098426.D
 Acq: 14 Dec 2018 9:05

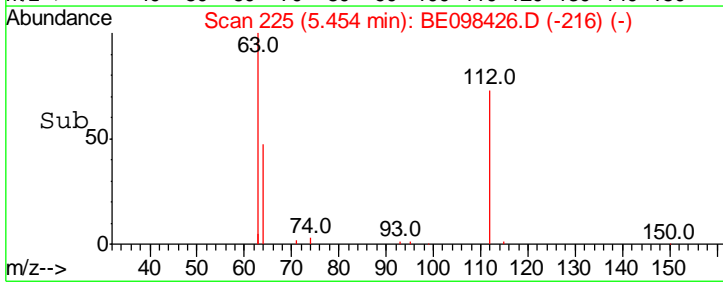
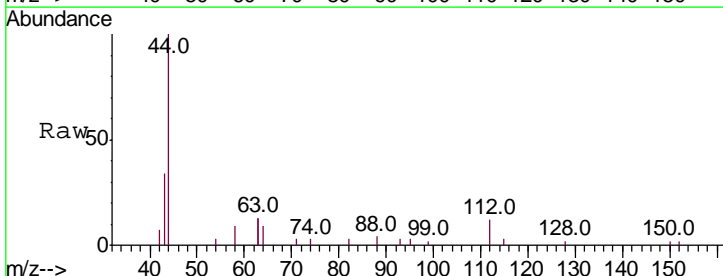
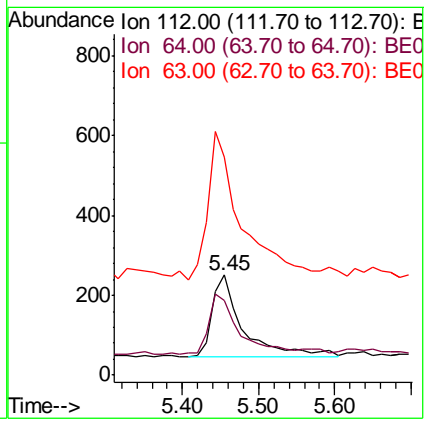
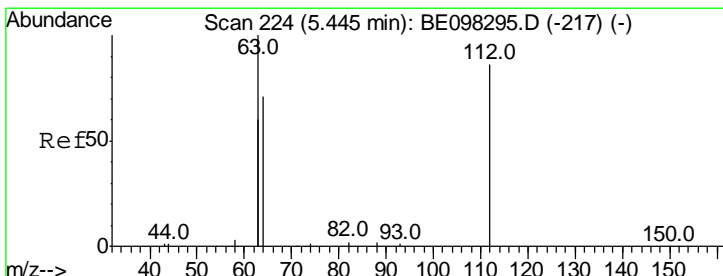
Instrument :
 BNA_E
ClientSampleId :
 BP-EB03-20181208

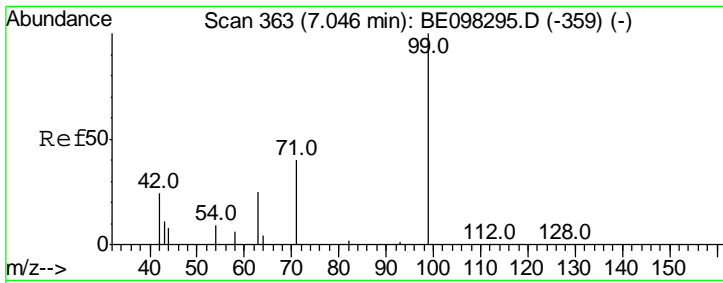
Tgt Ion	Resp	Lower	Upper
152	100		
150	143.3	124.2	186.4
115	68.7	53.9	80.9



#4
 2-Fluorophenol
 Concen: 0.258 ng
 RT: 5.45 min Scan# 225
 Delta R.T. 0.01 min
 Lab File: BE098426.D
 Acq: 14 Dec 2018 9:05

Tgt Ion	Resp	Lower	Upper
112	100		
64	70.6	59.8	89.8
63	182.0	133.7	200.5

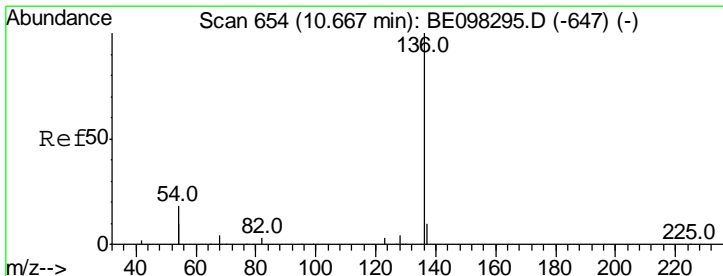
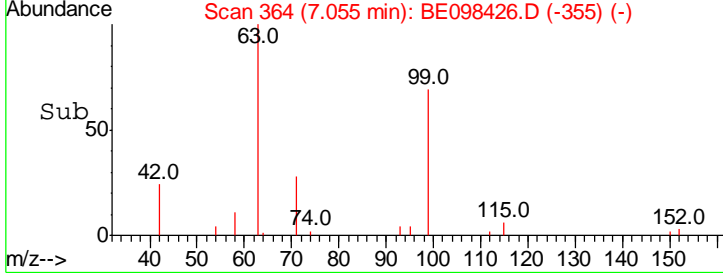
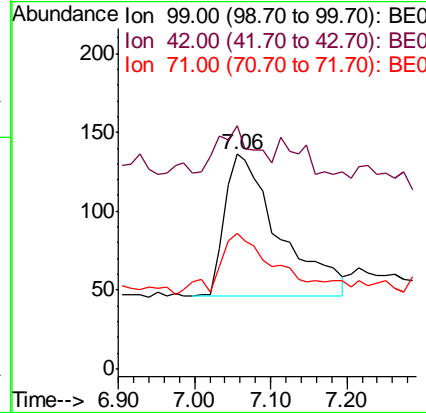
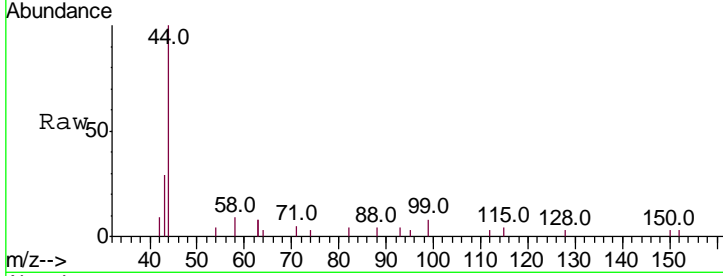




#5
 Phenol-d6
 Concen: 0.141 ng
 RT: 7.06 min Scan# 364
 Delta R.T. 0.01 min
 Lab File: BE098426.D
 Acq: 14 Dec 2018 9:05

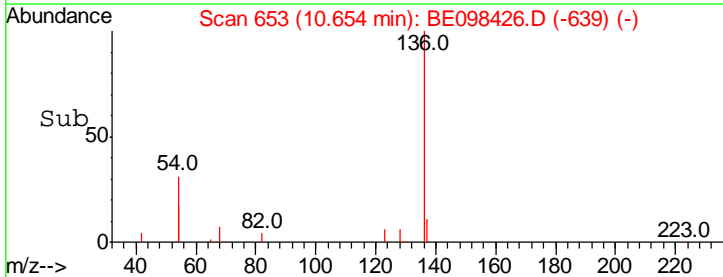
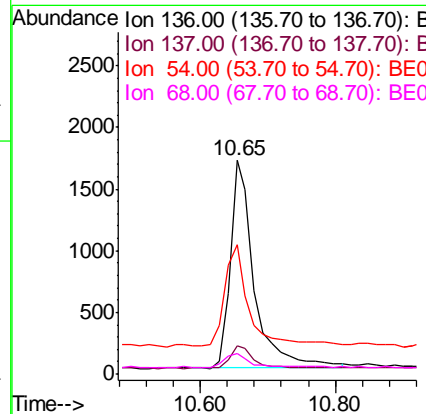
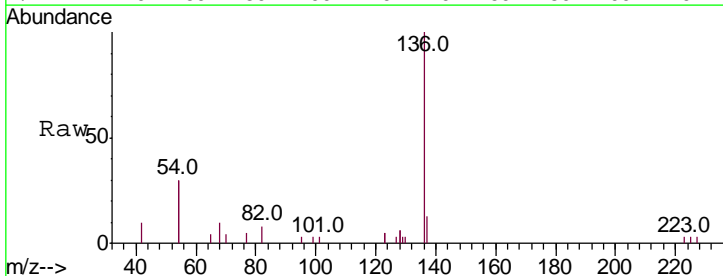
Instrument :
 BNA_E
 ClientSampleId :
 BP-EB03-20181208

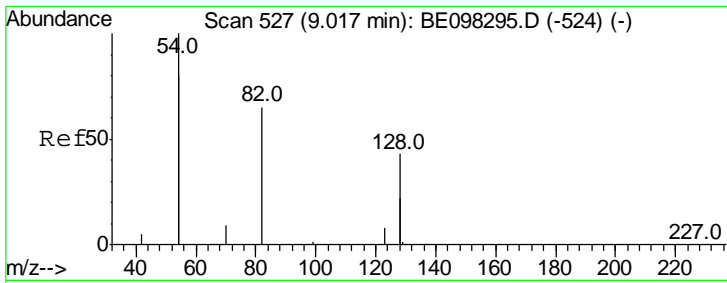
Tgt Ion	Resp	Lower	Upper
99	100		
42	25.2	26.3	39.5#
71	44.6	33.6	50.4



#7
 Naphthalene-d8
 Concen: 0.400 ng
 RT: 10.65 min Scan# 653
 Delta R.T. -0.01 min
 Lab File: BE098426.D
 Acq: 14 Dec 2018 9:05

Tgt Ion	Resp	Lower	Upper
136	100		
137	12.9	9.2	13.8
54	60.6	28.4	42.6#
68	9.6	5.4	8.0#

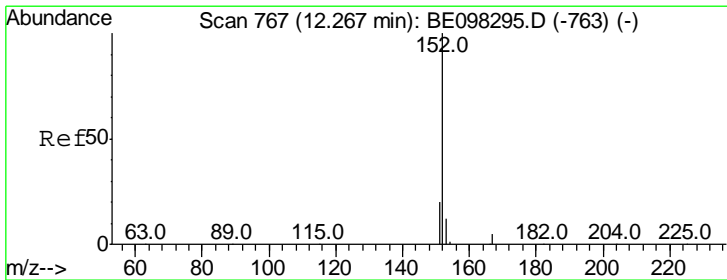
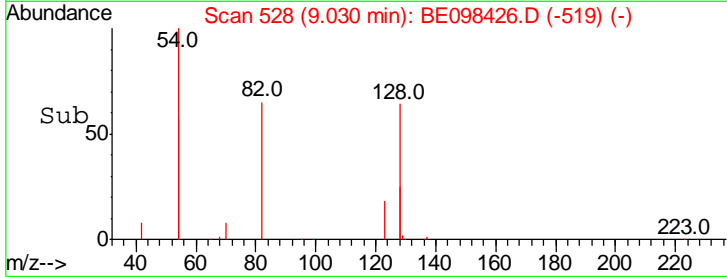
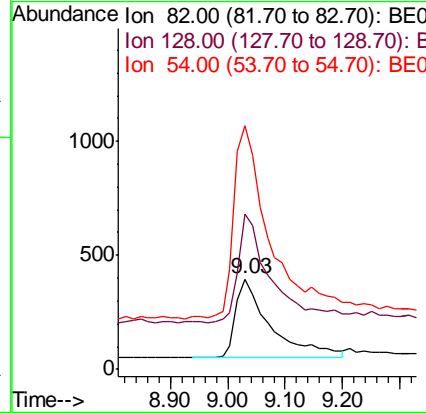
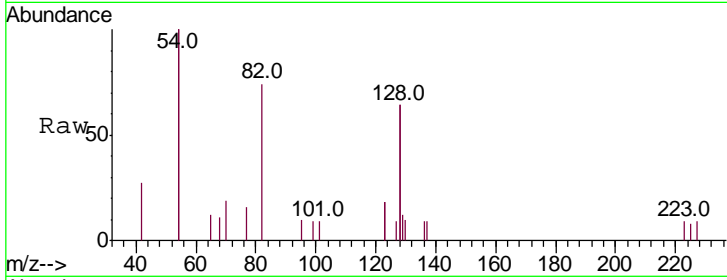




#8
 Nitrobenzene-d5
 Concen: 0.379 ng
 RT: 9.03 min Scan# 528
 Delta R.T. 0.01 min
 Lab File: BE098426.D
 Acq: 14 Dec 2018 9:05

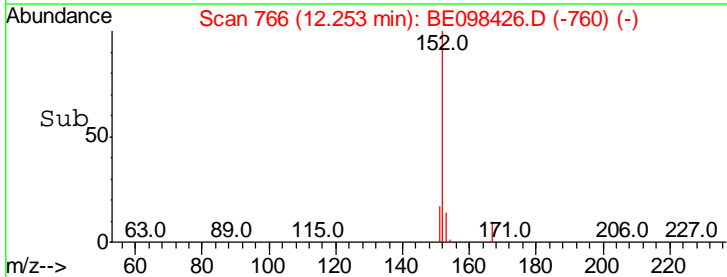
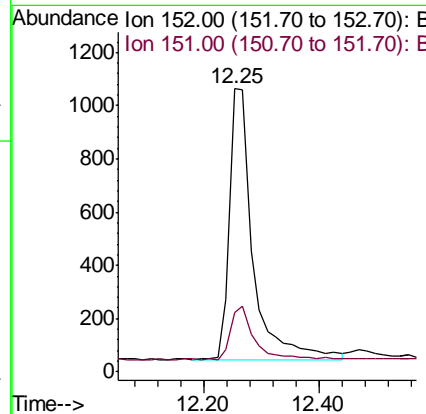
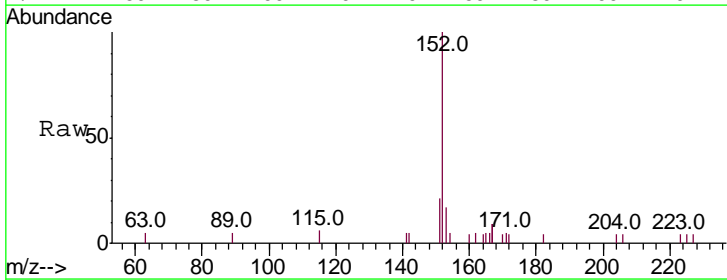
Instrument :
 BNA_E
ClientSampleId :
 BP-EB03-20181208

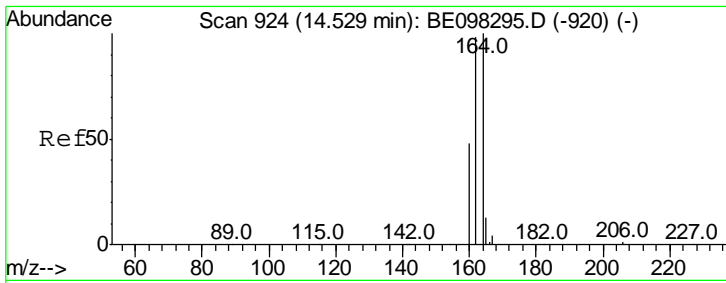
Tgt Ion	Resp	Lower	Upper
82	100		
128	171.8	102.4	153.6#
54	269.0	221.8	332.8



#11
 2-Methylnaphthalene-d10
 Concen: 0.418 ng
 RT: 12.25 min Scan# 766
 Delta R.T. -0.01 min
 Lab File: BE098426.D
 Acq: 14 Dec 2018 9:05

Tgt Ion	Resp	Lower	Upper
152	100		
151	19.7	16.2	24.4

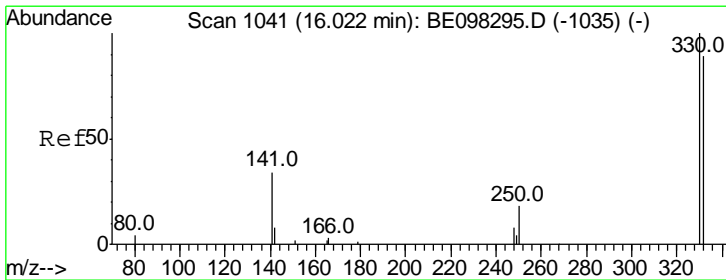
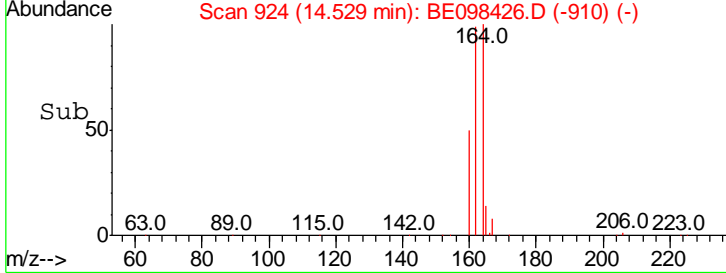
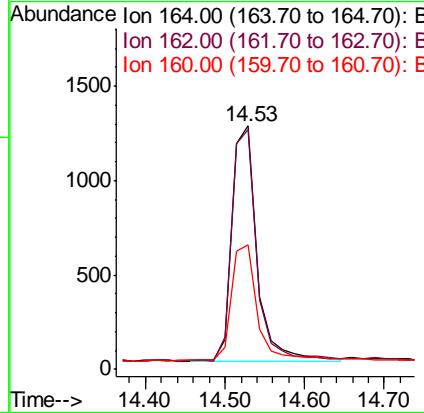
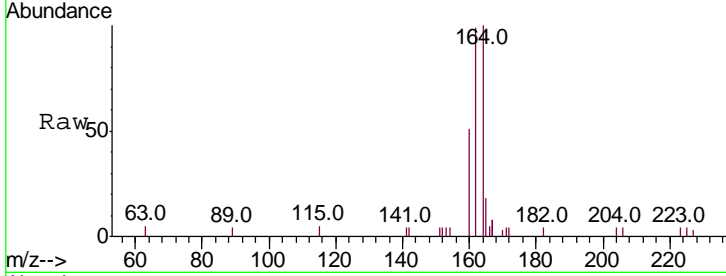




#13
 Acenaphthene-d10
 Concen: 0.400 ng
 RT: 14.53 min Scan# 924
 Delta R.T. 0.00 min
 Lab File: BE098426.D
 Acq: 14 Dec 2018 9:05

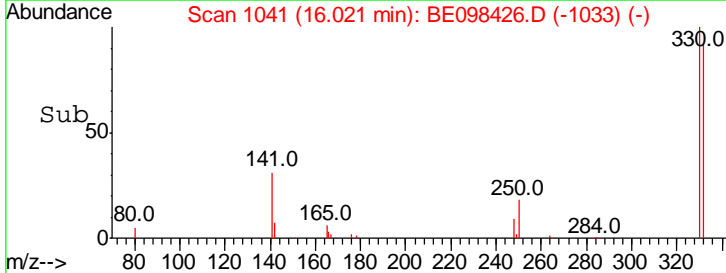
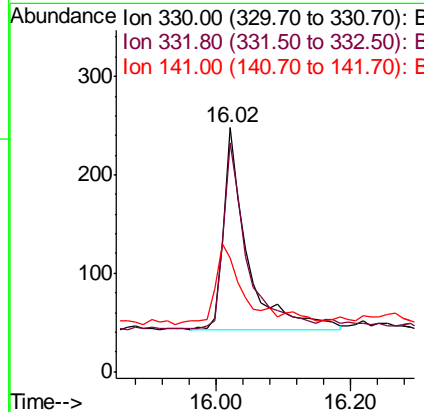
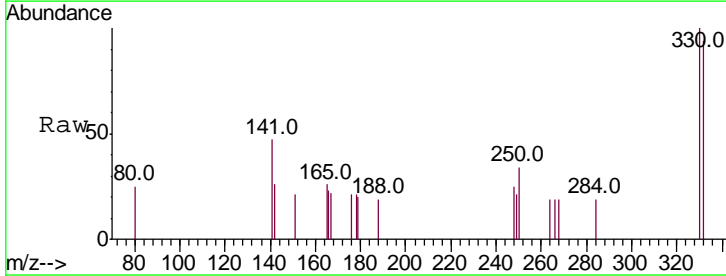
Instrument :
 BNA_E
 ClientSampleId :
 BP-EB03-20181208

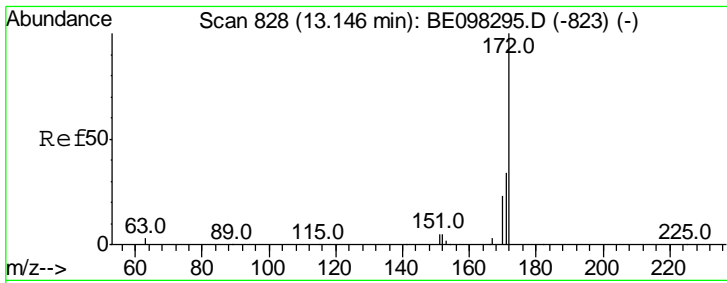
Tgt Ion	Resp	Lower	Upper
164	100		
162	98.7	77.6	116.4
160	51.4	36.0	54.0



#14
 2,4,6-Tribromophenol
 Concen: 0.510 ng
 RT: 16.02 min Scan# 1041
 Delta R.T. -0.00 min
 Lab File: BE098426.D
 Acq: 14 Dec 2018 9:05

Tgt Ion	Resp	Lower	Upper
330	100		
332	90.3	76.2	114.4
141	41.1	39.0	58.4

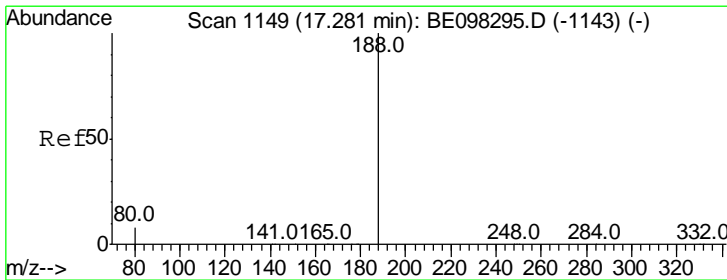
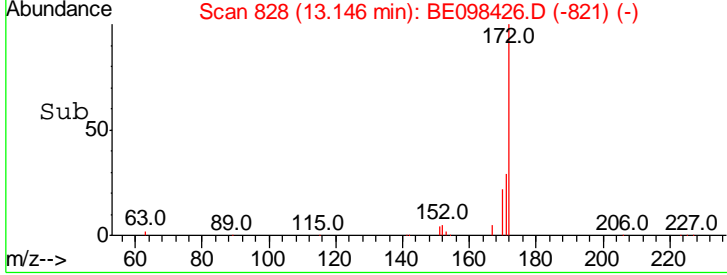
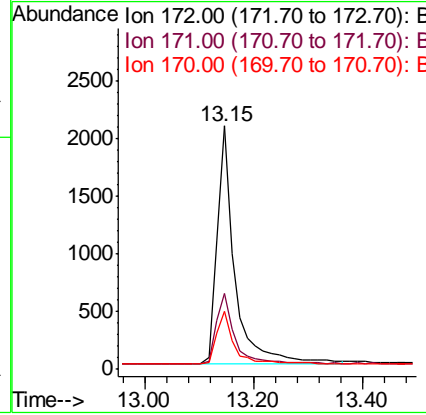
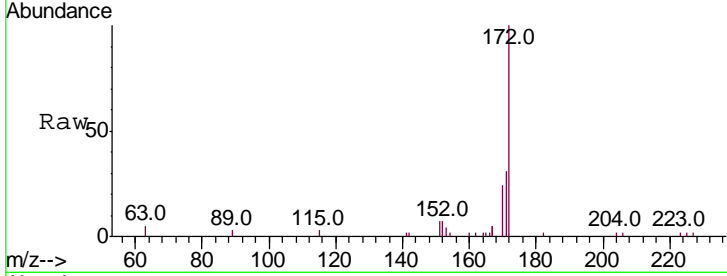




#15
 2-Fluorobiphenyl
 Concen: 0.420 ng
 RT: 13.15 min Scan# 828
 Delta R.T. 0.00 min
 Lab File: BE098426.D
 Acq: 14 Dec 2018 9:05

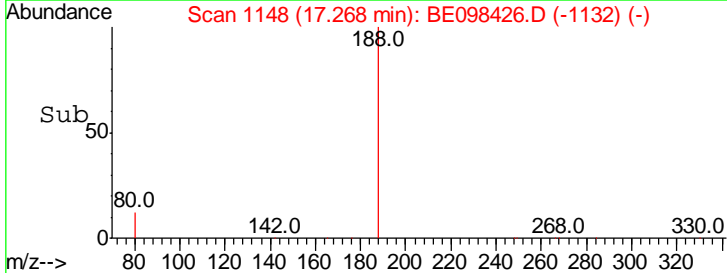
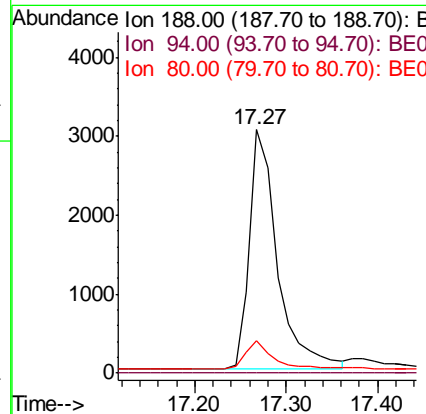
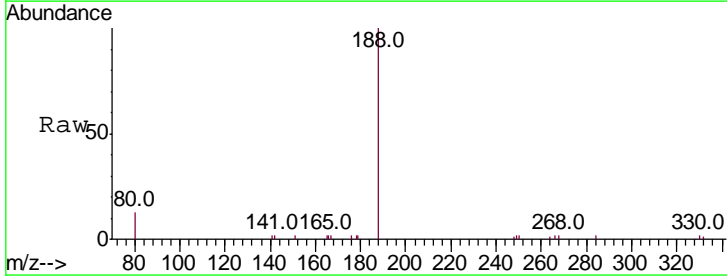
Instrument :
 BNA_E
ClientSampled :
 BP-EB03-20181208

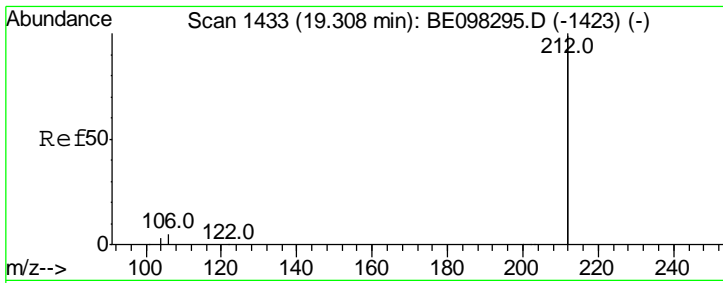
Tgt Ion	Resp	Lower	Upper
172	100		
171	31.0	27.5	41.3
170	23.7	19.6	29.4



#19
 Phenanthrene-d10
 Concen: 0.400 ng
 RT: 17.27 min Scan# 1148
 Delta R.T. -0.01 min
 Lab File: BE098426.D
 Acq: 14 Dec 2018 9:05

Tgt Ion	Resp	Lower	Upper
188	100		
94	0.0	0.0	0.0
80	13.1	7.2	10.8#



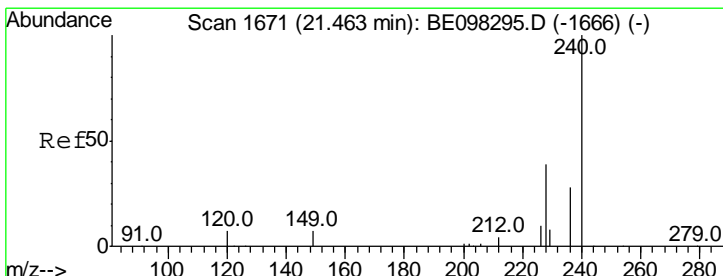
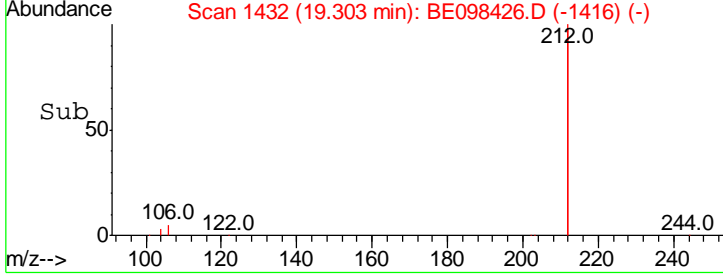
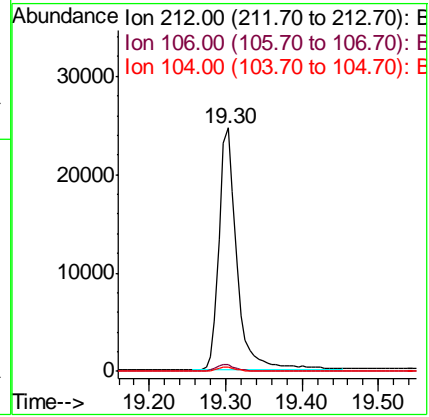
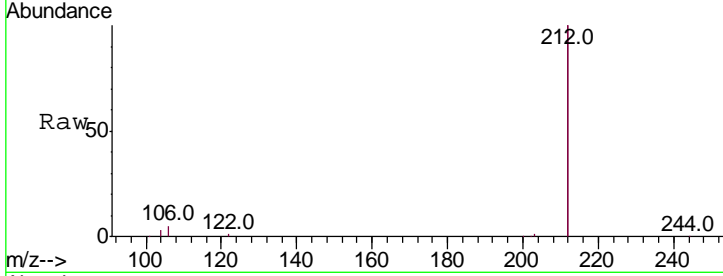


#25
 Fluoranthene-d10
 Concen: 0.474 ng
 RT: 19.30 min Scan# 1432
 Delta R.T. -0.01 min
 Lab File: BE098426.D
 Acq: 14 Dec 2018 9:05

Instrument :
 BNA_E
 ClientSampled :
 BP-EB03-20181208

Tgt Ion: 212 Resp: 39728

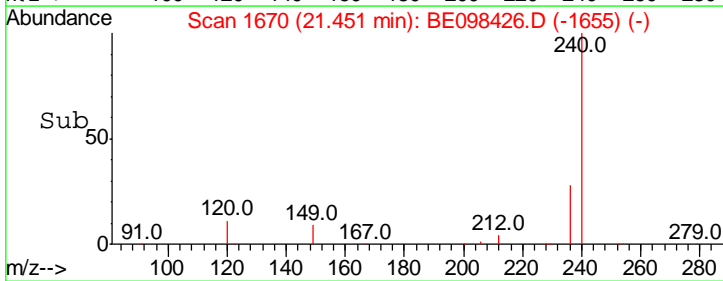
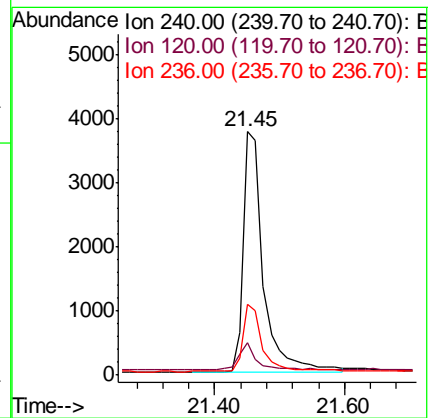
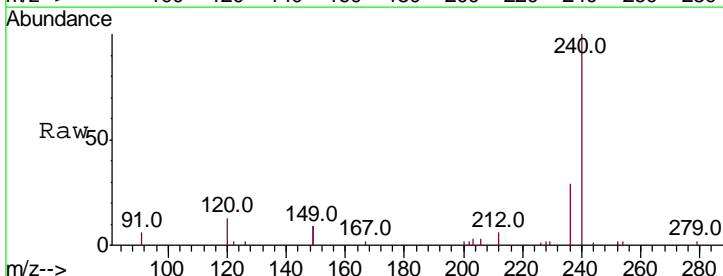
Ion	Ratio	Lower	Upper
212	100		
106	2.7	2.2	3.2
104	1.5	1.3	1.9

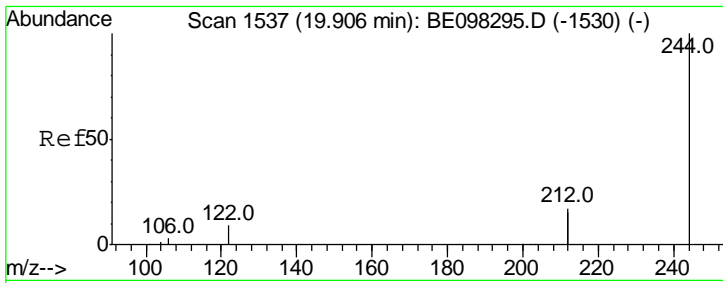


#27
 Chrysene-d12
 Concen: 0.400 ng
 RT: 21.45 min Scan# 1670
 Delta R.T. -0.01 min
 Lab File: BE098426.D
 Acq: 14 Dec 2018 9:05

Tgt Ion: 240 Resp: 8098

Ion	Ratio	Lower	Upper
240	100		
120	13.1	9.5	14.3
236	29.2	22.7	34.1

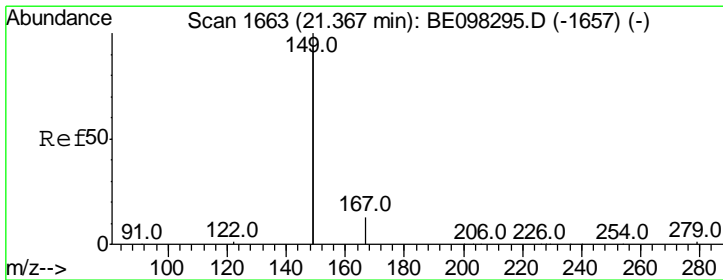
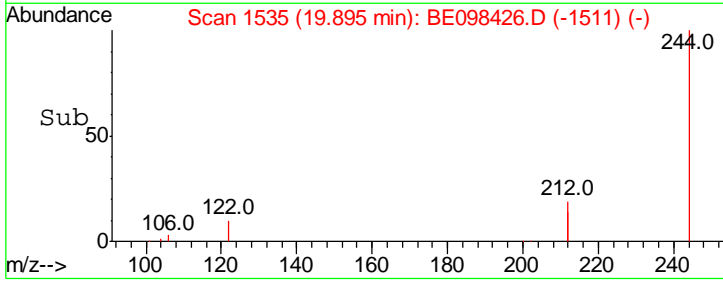
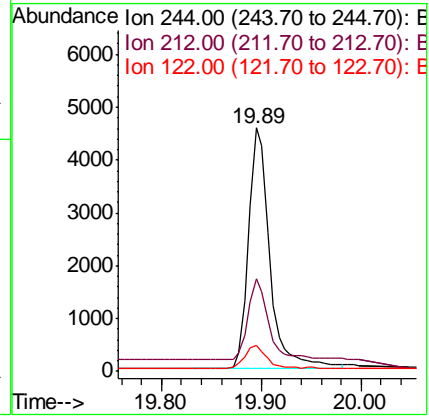
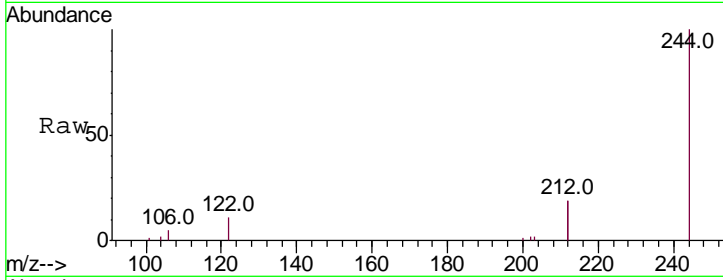




#29
 Terphenyl-d14
 Concen: 0.347 ng
 RT: 19.89 min Scan# 1535
 Delta R.T. -0.01 min
 Lab File: BE098426.D
 Acq: 14 Dec 2018 9:05

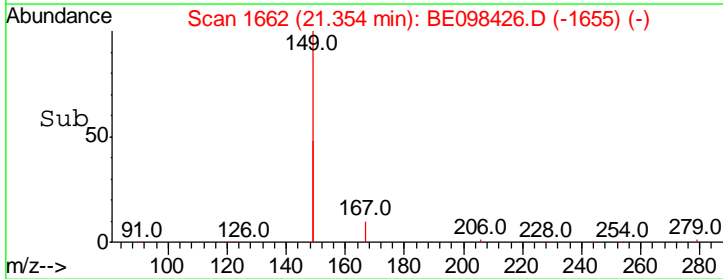
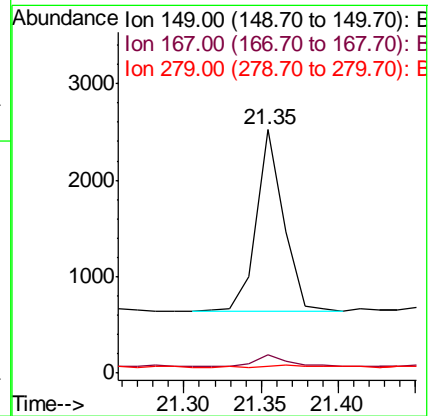
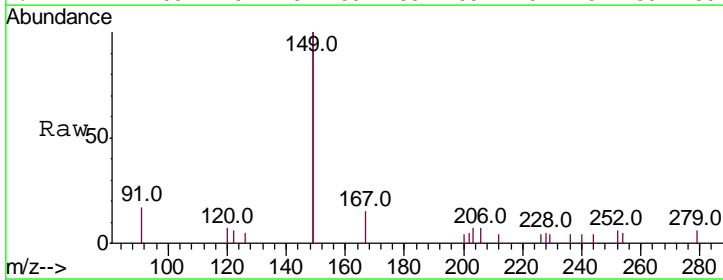
Instrument : BNA_E
 ClientSampleId : BP-EB03-20181208

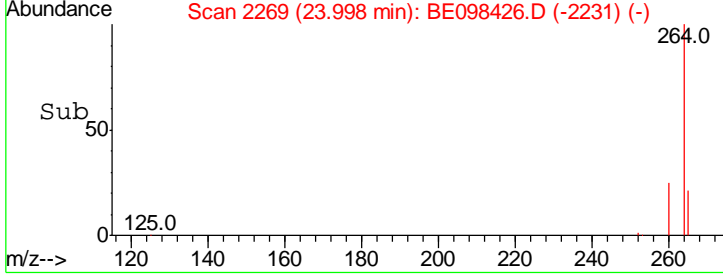
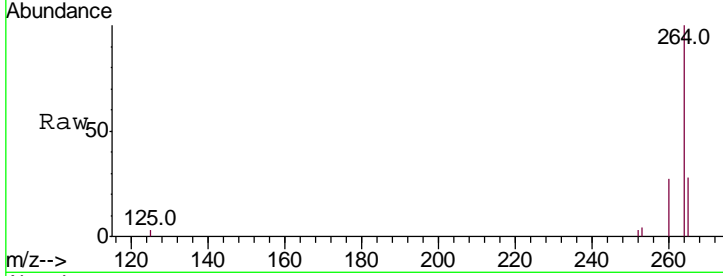
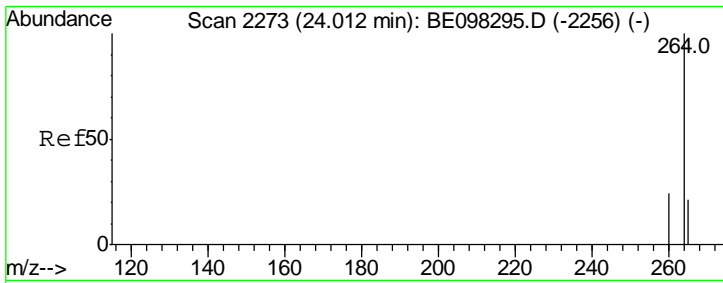
Tgt Ion	Ratio	Lower	Upper
244	100		
212	38.2	27.4	41.0
122	10.8	8.3	12.5



#32
 Bis(2-ethylhexyl)phthalate
 Concen: 0.050 ng
 RT: 21.35 min Scan# 1662
 Delta R.T. -0.01 min
 Lab File: BE098426.D
 Acq: 14 Dec 2018 9:05

Tgt Ion	Ratio	Lower	Upper
149	100		
167	7.9	5.7	8.5
279	2.5	1.0	1.4#





#34
 Perylene-d12
 Concen: 0.400 ng
 RT: 24.00 min Scan# 2269
 Delta R.T. -0.01 min
 Lab File: BE098426.D
 Acq: 14 Dec 2018 9:05

Instrument :
 BNA_E
ClientSampleId :
 BP-EB03-20181208

Tot Ion: 264 Resp: 7789

Ion	Ratio	Lower	Upper
264	100		
260	26.5	20.2	30.2
265	28.4	25.2	37.8

