

Data Path : Z:\SVOASRV\HPCHEM1\BNA E\DATA\BE121619\
 Data File : BE100924.D
 Acq On : 16 Dec 2019 17:36
 Operator : JU
 Sample : K6252-07
 Misc :
 ALS Vial : 11 Sample Multiplier: 1

Instrument :
 BNA_E
 ClientSampleId :

Quant Time: Dec 16 19:13:42 2019
 Quant Method : Z:\SVOASRV\HPCHEM1\BNA E\METHODS\8270-SIM-BE120419.M
 Quant Title : ASP BNA STANDARDS FOR 5 POINT CALIBRATION
 QLast Update : Fri Dec 13 10:42:38 2019
 Response via : Initial Calibration

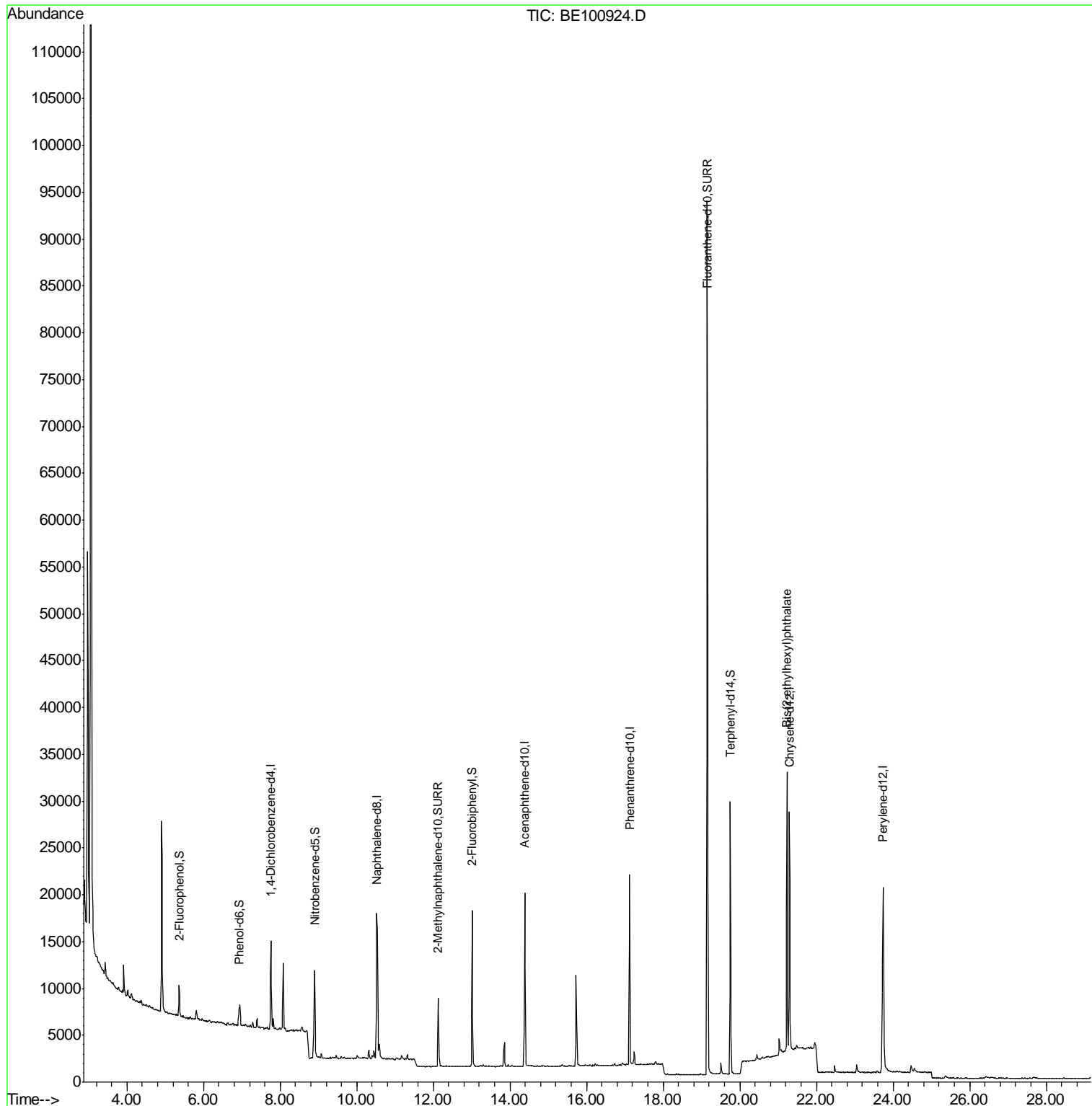
Internal Standards	R.T.	QIon	Response	Conc	Units	Dev(Min)
1) 1,4-Dichlorobenzene-d4	7.76	152	4221	0.40	ng	0.00
7) Naphthalene-d8	10.54	136	18982	0.40	ng	0.00
13) Acenaphthene-d10	14.38	164	10571	0.40	ng	0.00
19) Phenanthrene-d10	17.12	188	28096	0.40	ng	0.00
27) Chrysene-d12	21.29	240	27016	0.40	ng	-0.01
34) Perylene-d12	23.74	264	30705	0.40	ng	0.00
System Monitoring Compounds						
4) 2-Fluorophenol	5.36	112	1640	0.16	ng	-0.01
5) Phenol-d6	6.93	99	1468	0.10	ng	0.00
8) Nitrobenzene-d5	8.90	82	4455	0.49	ng	0.00
11) 2-Methylnaphthalene-d10	12.12	152	10528	0.38	ng	-0.01
14) 2,4,6-Tribromophenol	15.90	330	11	0.01	ng	0.03
15) 2-Fluorobiphenyl	13.02	172	14237	0.34	ng	0.00
25) Fluoranthene-d10	19.15	212	124241	0.37	ng	0.00
29) Terphenyl-d14	19.75	244	24022	0.37	ng	0.00
Target Compounds						Qvalue
32) Bis(2-ethylhexyl)phthalate	21.23	149	33904	0.601	ng	99

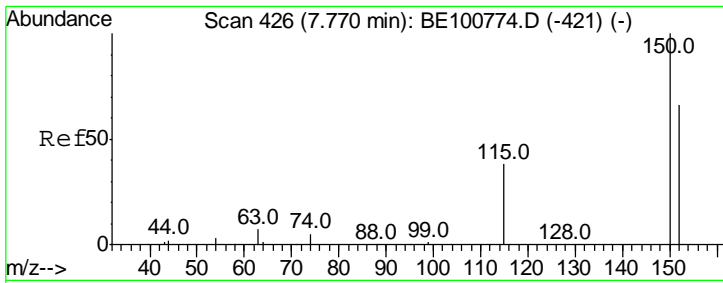
(#) = qualifier out of range (m) = manual integration (+) = signals summed

Data Path : Z:\SVOASRV\HPCHEM1\BNA E\DATA\BE121619\
Data File : BE100924.D
Acq On : 16 Dec 2019 17:36
Operator : JU
Sample : K6252-07
Misc :
ALS Vial : 11 Sample Multiplier: 1

Instrument :
BNA_E
ClientSampled :

Quant Time: Dec 16 19:13:42 2019
Quant Method : Z:\SVOASRV\HPCHEM1\BNA E\METHODS\8270-SIM-BE120419.M
Quant Title : ASP BNA STANDARDS FOR 5 POINT CALIBRATION
QLast Update : Fri Dec 13 10:42:38 2019
Response via : Initial Calibration

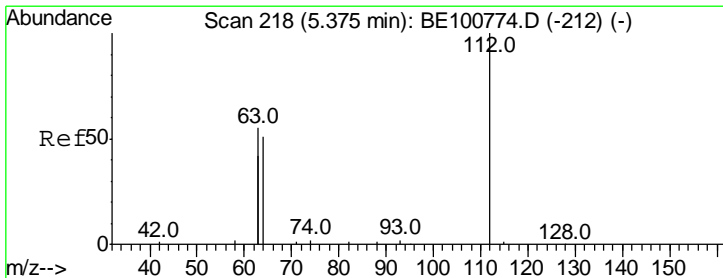
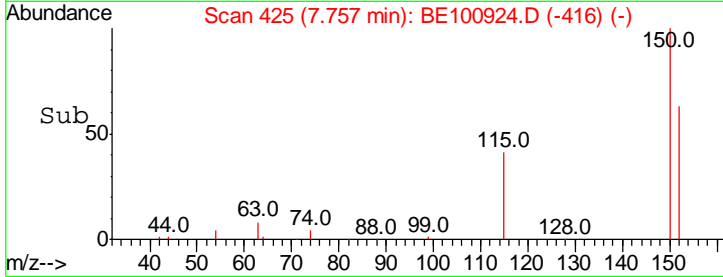
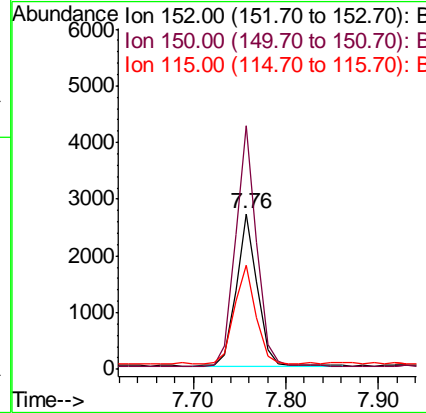
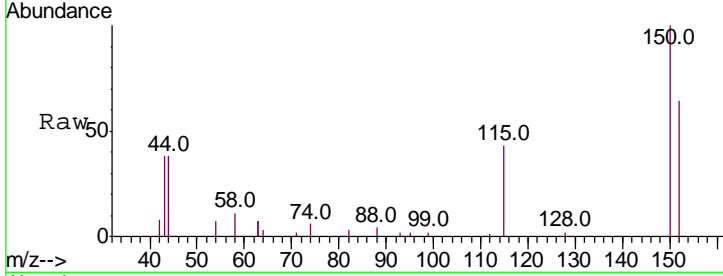




#1
 1,4-Dichlorobenzene-d4
 Concen: 0.400 ng
 RT: 7.76 min Scan# 425
 Delta R.T. -0.00 min
 Lab File: BE100924.D
 Acq: 16 Dec 2019 17:36

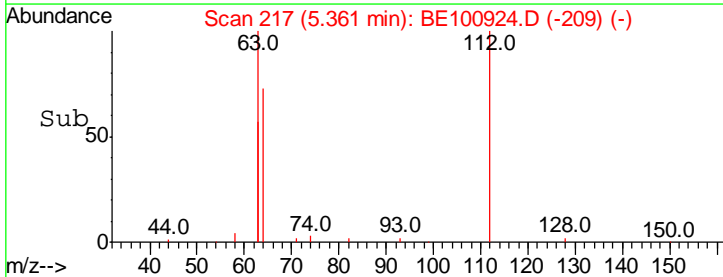
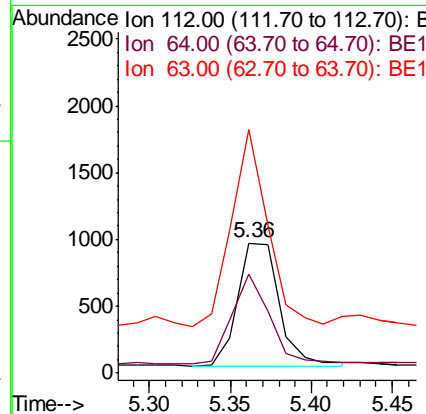
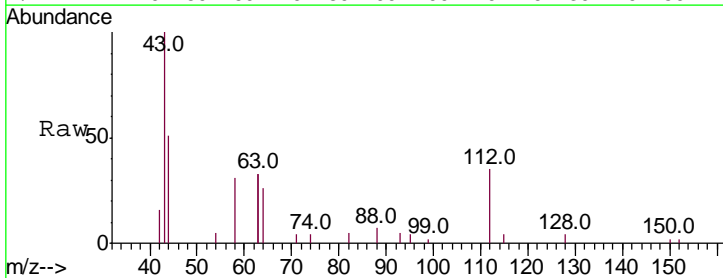
Instrument :
 BNA_E
 ClientSampled :

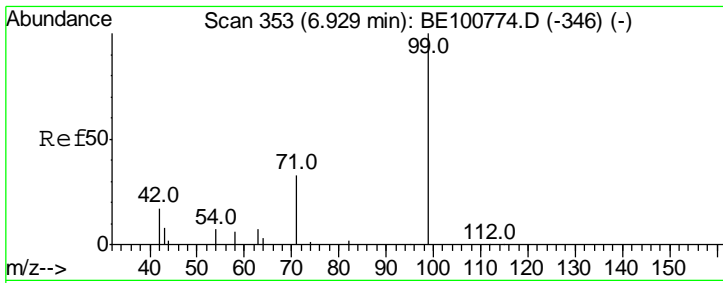
Tgt Ion	Resp	Lower	Upper
152	4221		
152	100		
150	156.4	125.5	188.3
115	67.1	55.7	83.5



#4
 2-Fluorophenol
 Concen: 0.164 ng
 RT: 5.36 min Scan# 217
 Delta R.T. -0.01 min
 Lab File: BE100924.D
 Acq: 16 Dec 2019 17:36

Tgt Ion	Resp	Lower	Upper
112	1640		
112	100		
64	66.2	54.5	81.7
63	138.0	116.1	174.1

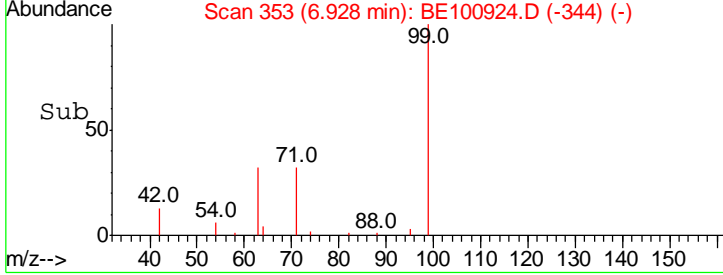
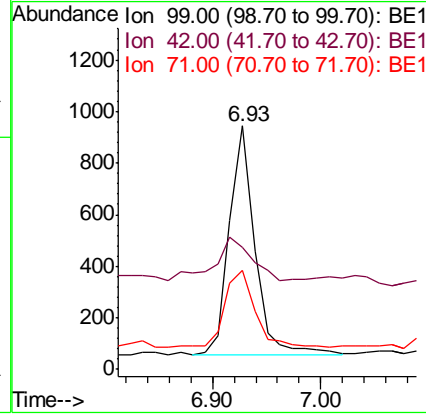
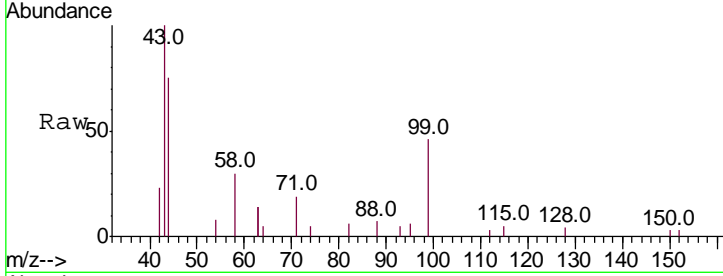




#5
 Phenol-d6
 Concen: 0.097 ng
 RT: 6.93 min Scan# 353
 Delta R.T. -0.00 min
 Lab File: BE100924.D
 Acq: 16 Dec 2019 17:36

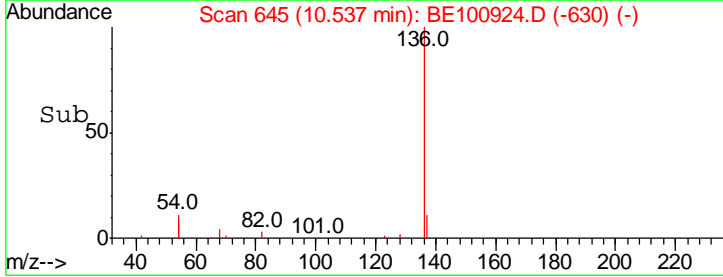
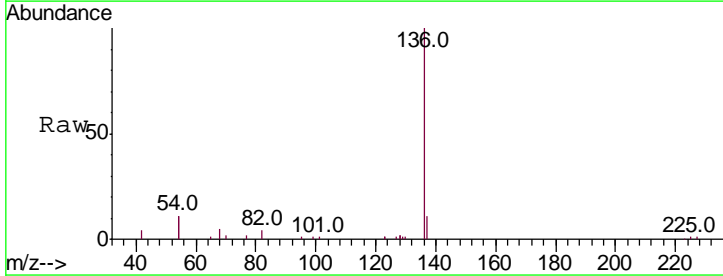
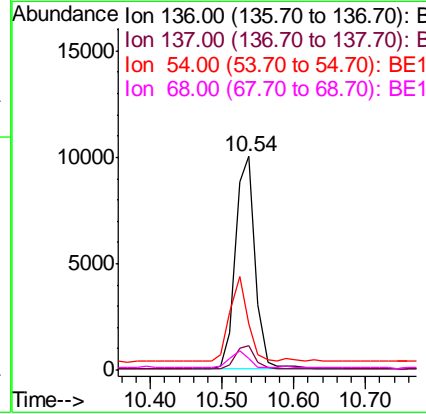
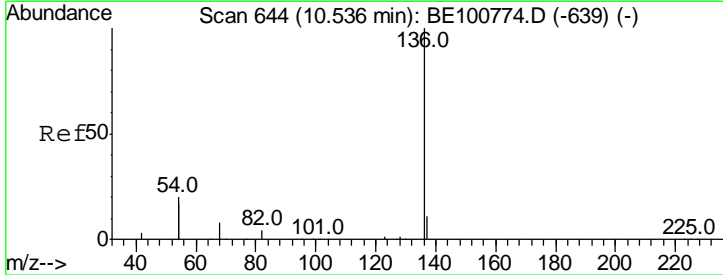
Instrument :
 BNA_E
 ClientSampled :

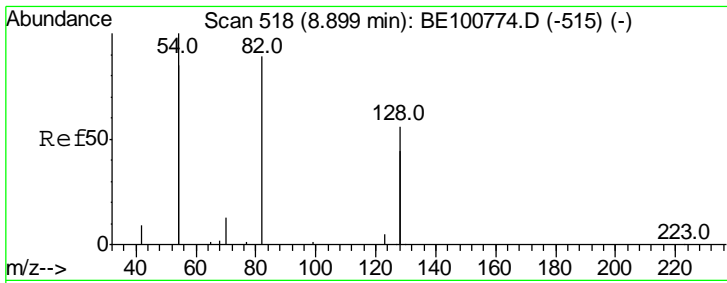
Tgt Ion	Resp	Lower	Upper
99	1468		
42	27.7	18.2	27.2#
71	39.1	29.1	43.7



#7
 Naphthalene-d8
 Concen: 0.400 ng
 RT: 10.54 min Scan# 645
 Delta R.T. 0.00 min
 Lab File: BE100924.D
 Acq: 16 Dec 2019 17:36

Tgt Ion	Resp	Lower	Upper
136	18982		
137	11.4	9.1	13.7
54	21.7	18.9	28.3
68	5.2	4.6	6.8

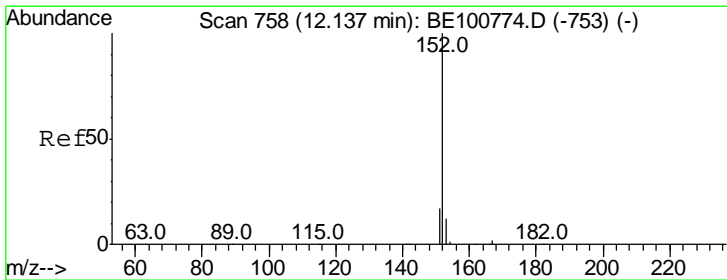
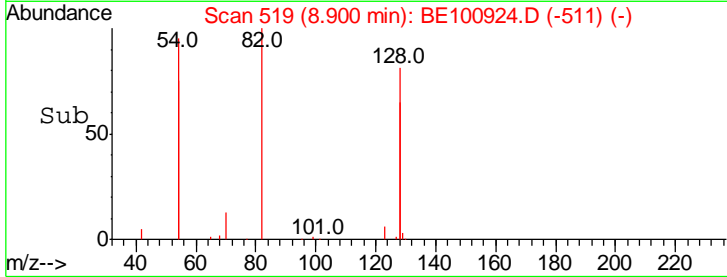
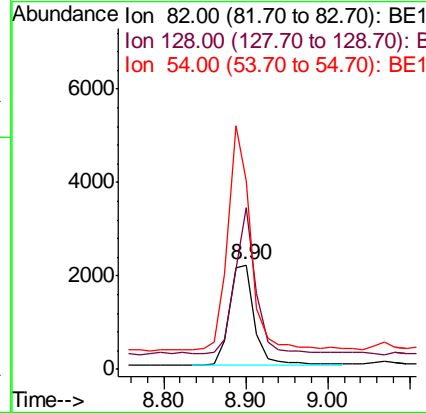
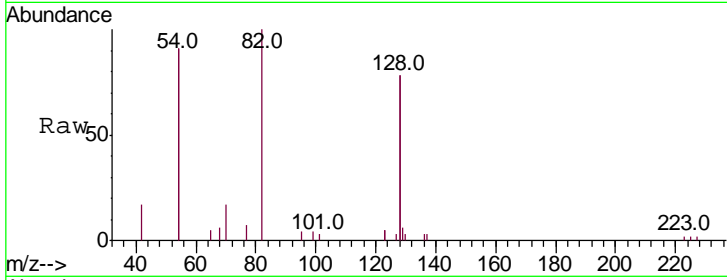




#8
 Nitrobenzene-d5
 Concen: 0.493 ng
 RT: 8.90 min Scan# 519
 Delta R.T. 0.00 min
 Lab File: BE100924.D
 Acq: 16 Dec 2019 17:36

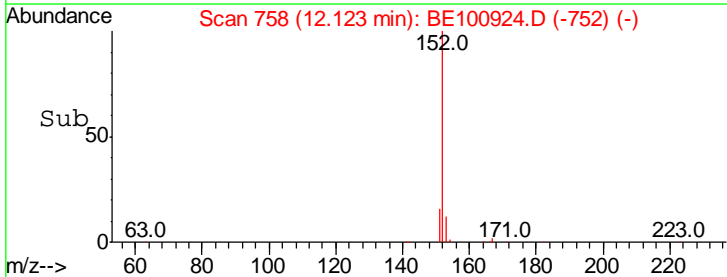
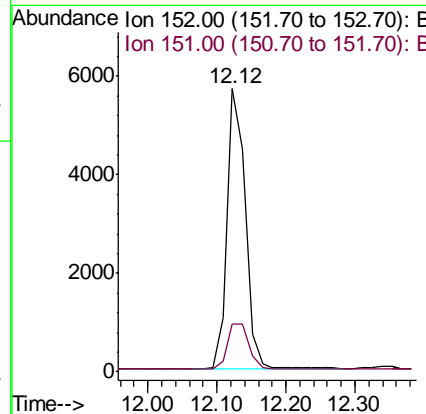
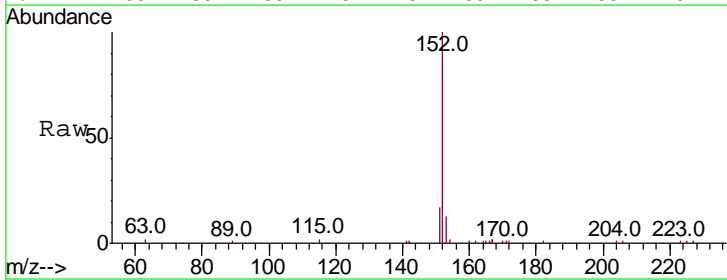
Instrument :
 BNA_E
 ClientSampled :

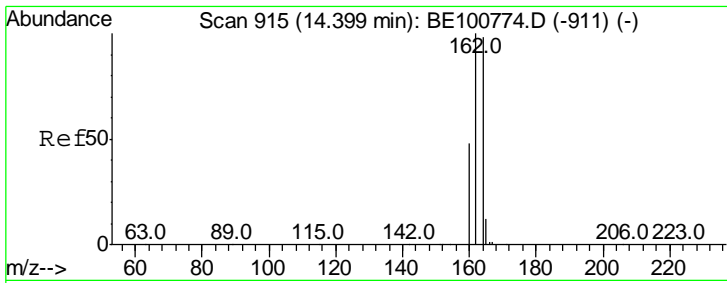
Tgt Ion	Resp	Lower	Upper
82	100		
128	155.4	113.5	170.3
54	181.5	138.9	208.3



#11
 2-Methylnaphthalene-d10
 Concen: 0.383 ng
 RT: 12.12 min Scan# 758
 Delta R.T. -0.01 min
 Lab File: BE100924.D
 Acq: 16 Dec 2019 17:36

Tgt Ion	Resp	Lower	Upper
152	100		
151	19.2	15.1	22.7

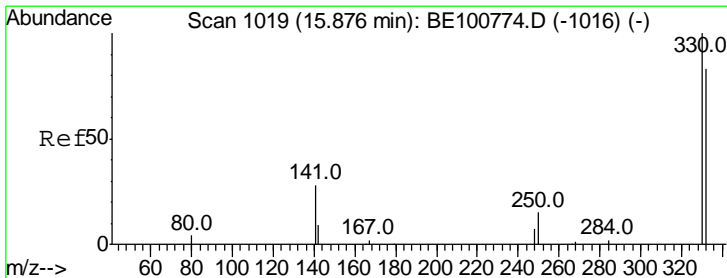
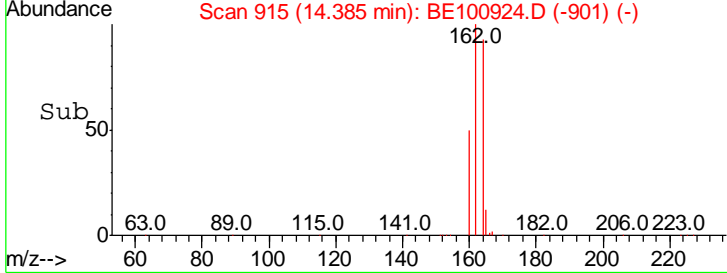
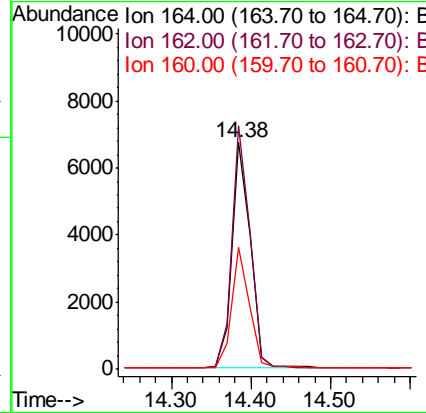
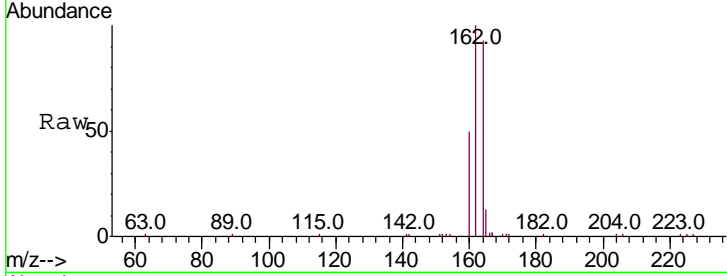




#13
 Acenaphthene-d10
 Concen: 0.400 ng
 RT: 14.38 min Scan# 915
 Delta R.T. -0.00 min
 Lab File: BE100924.D
 Acq: 16 Dec 2019 17:36

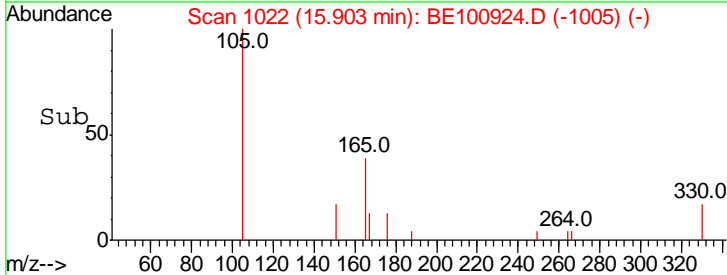
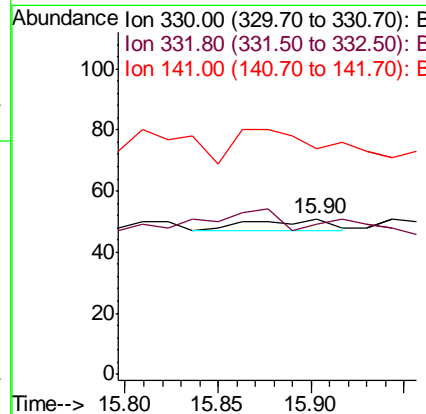
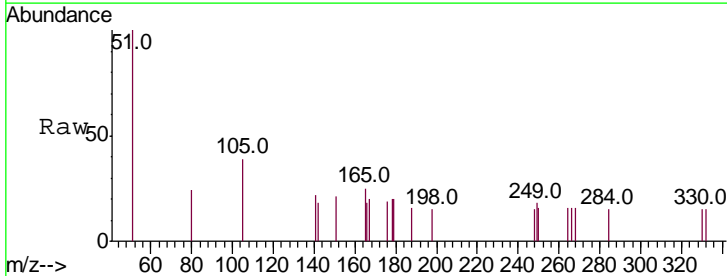
Instrument :
 BNA_E
 ClientSampled :

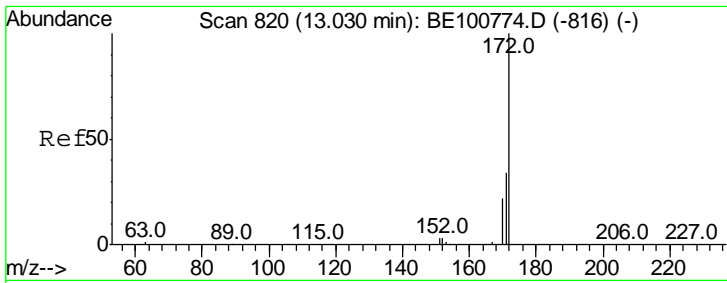
Tgt Ion	Resp	Lower	Upper
164	10571		
164	100		
162	107.5	86.0	129.0
160	53.8	42.3	63.5



#14
 2,4,6-Tribromophenol
 Concen: 0.009 ng
 RT: 15.90 min Scan# 1022
 Delta R.T. 0.03 min
 Lab File: BE100924.D
 Acq: 16 Dec 2019 17:36

Tgt Ion	Resp	Lower	Upper
330	11		
330	100		
332	81.8	74.1	111.1
141	0.0	46.7	70.1#

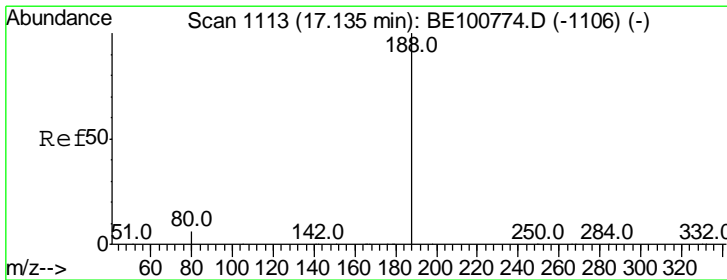
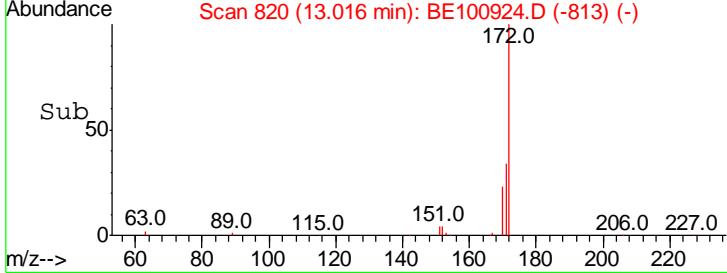
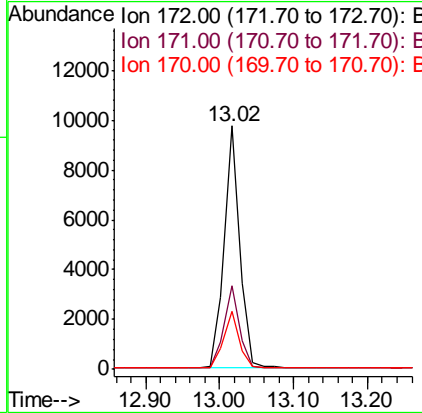
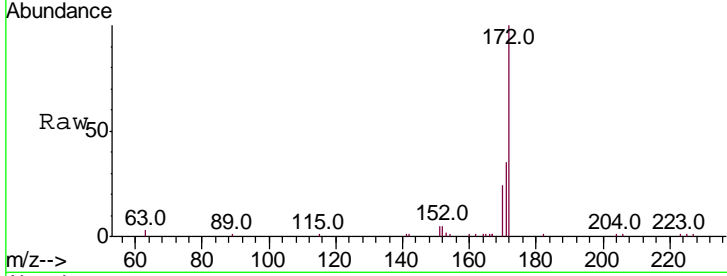




#15
 2-Fluorobiphenyl
 Concen: 0.340 ng
 RT: 13.02 min Scan# 820
 Delta R.T. -0.00 min
 Lab File: BE100924.D
 Acq: 16 Dec 2019 17:36

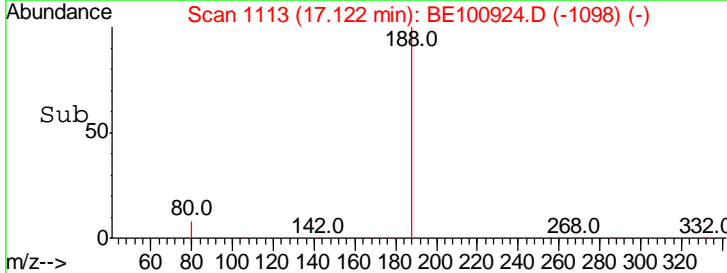
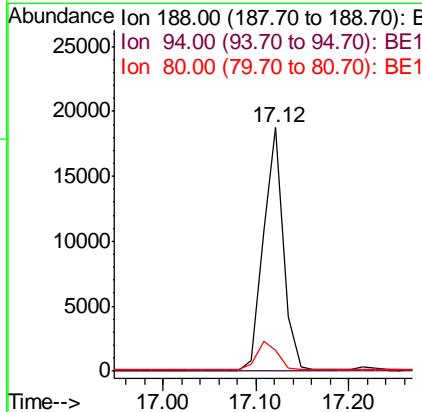
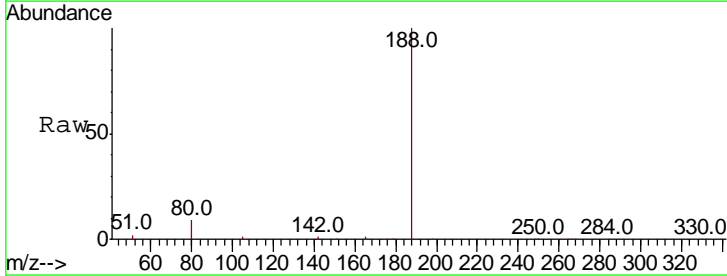
Instrument :
 BNA_E
 ClientSampleId :

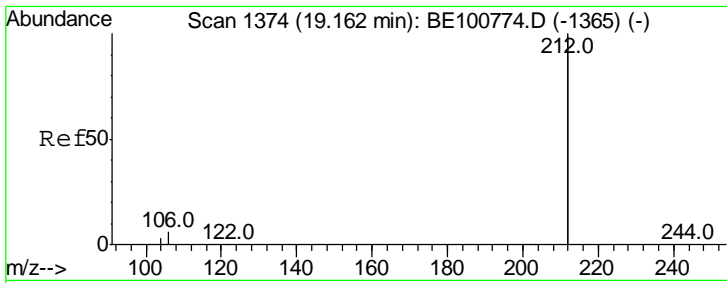
Tgt Ion	Resp	Lower	Upper
172	14237		
171	34.6	28.2	42.4
170	23.6	19.4	29.0



#19
 Phenanthrene-d10
 Concen: 0.400 ng
 RT: 17.12 min Scan# 1113
 Delta R.T. 0.00 min
 Lab File: BE100924.D
 Acq: 16 Dec 2019 17:36

Tgt Ion	Resp	Lower	Upper
188	28096		
94	0.0	0.0	0.0
80	8.5	7.9	11.9

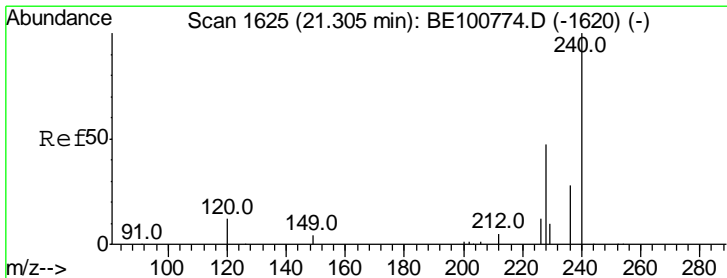
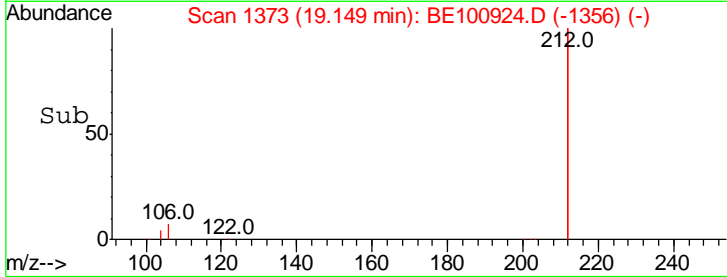
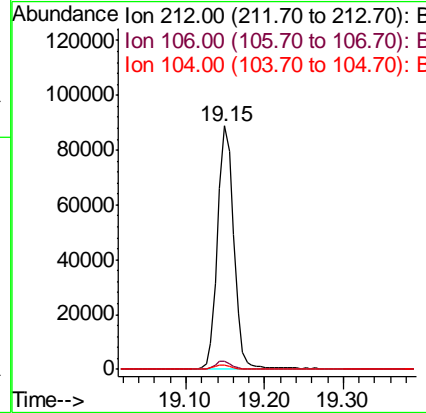
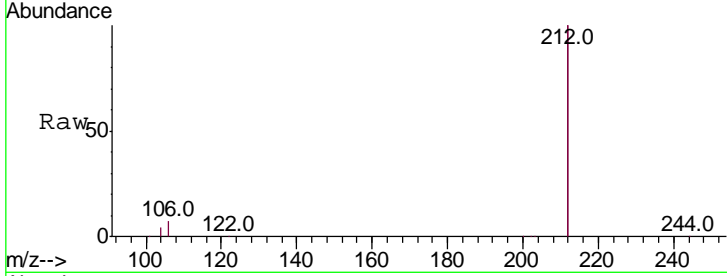




#25
 Fluoranthene-d10
 Concen: 0.374 ng
 RT: 19.15 min Scan# 1373
 Delta R.T. -0.00 min
 Lab File: BE100924.D
 Acq: 16 Dec 2019 17:36

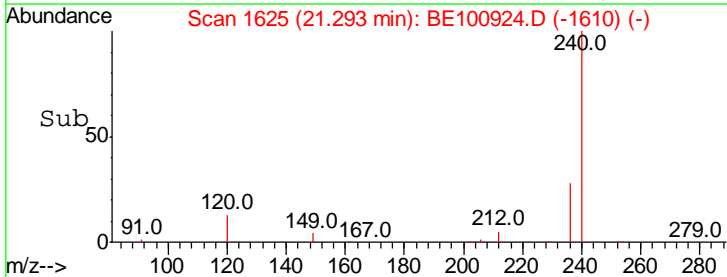
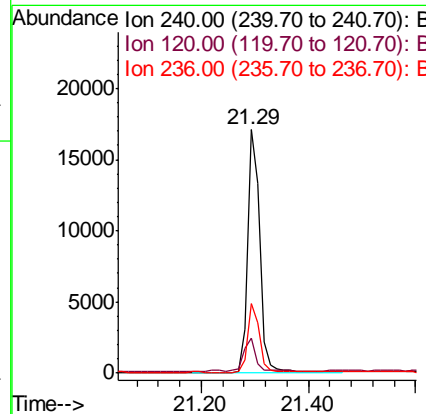
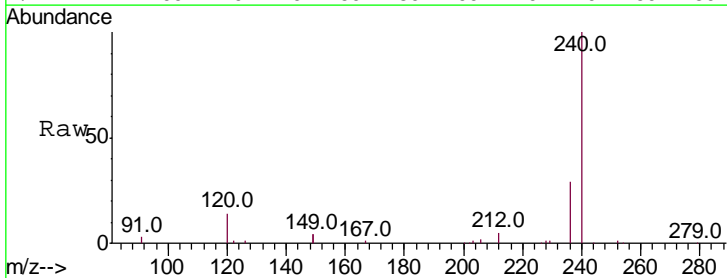
Instrument :
 BNA_E
 ClientSampled :

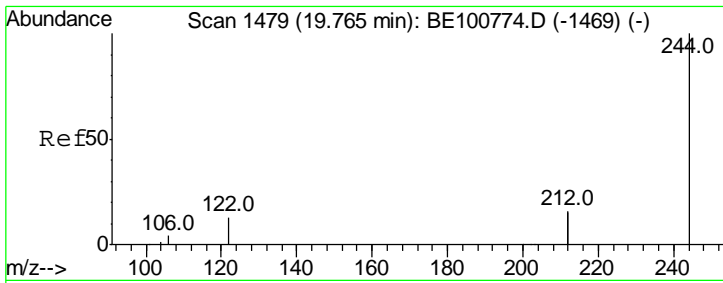
Tgt Ion	Resp	Lower	Upper
212	100		
106	3.3	2.6	4.0
104	1.9	1.4	2.2



#27
 Chrysene-d12
 Concen: 0.400 ng
 RT: 21.29 min Scan# 1625
 Delta R.T. -0.01 min
 Lab File: BE100924.D
 Acq: 16 Dec 2019 17:36

Tgt Ion	Resp	Lower	Upper
240	100		
120	14.2	4.0	6.0#
236	28.6	21.6	32.4

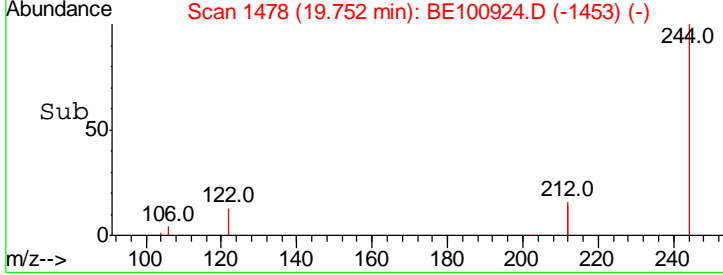
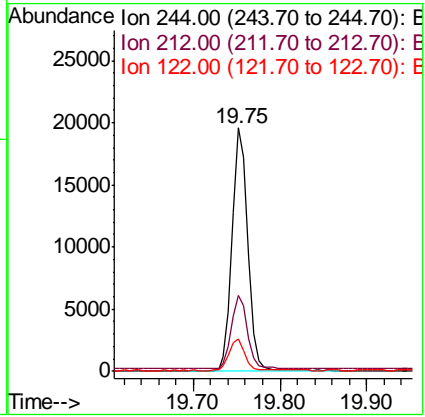
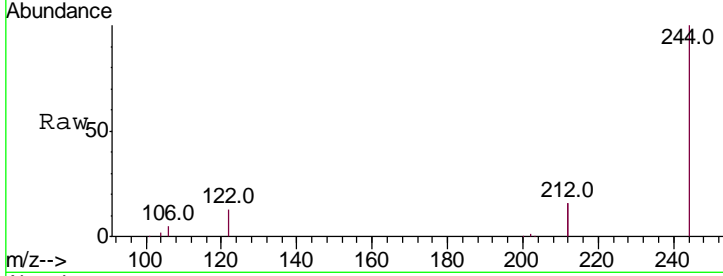




#29
 Terphenyl-d14
 Concen: 0.371 ng
 RT: 19.75 min Scan# 1478
 Delta R.T. -0.01 min
 Lab File: BE100924.D
 Acq: 16 Dec 2019 17:36

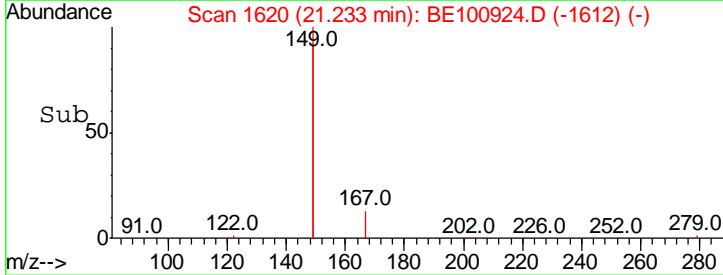
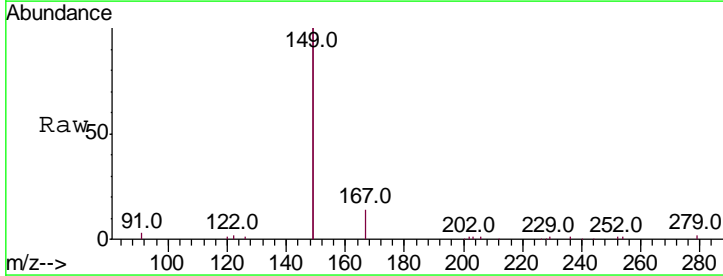
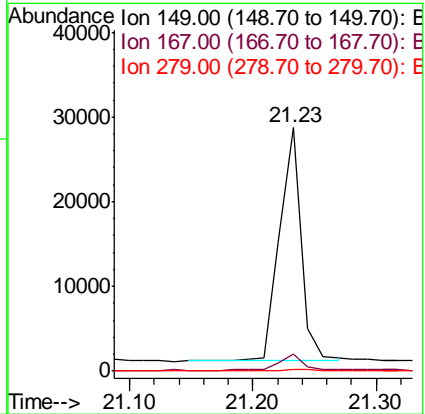
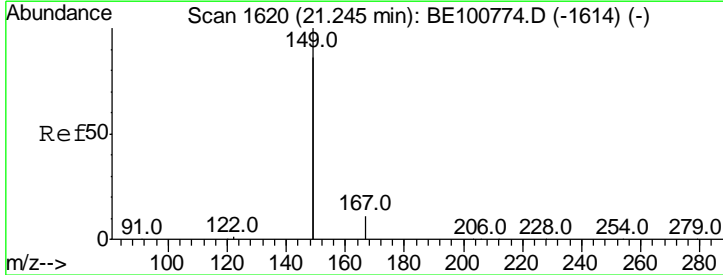
Instrument :
 BNA_E
 ClientSampled :

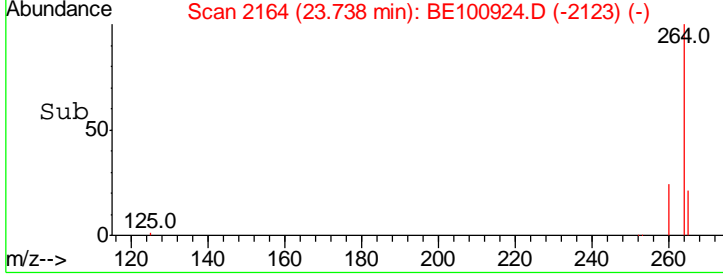
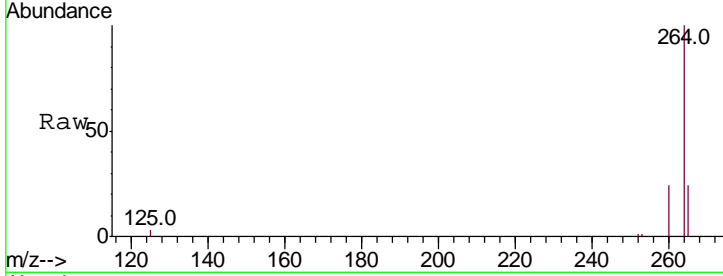
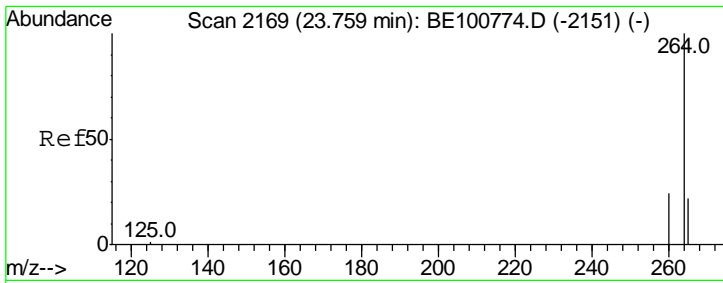
Tgt Ion	Resp	Lower	Upper
244	100		
212	31.3	25.2	37.8
122	13.1	8.9	13.3



#32
 Bis(2-ethylhexyl)phthalate
 Concen: 0.601 ng
 RT: 21.23 min Scan# 1620
 Delta R.T. -0.00 min
 Lab File: BE100924.D
 Acq: 16 Dec 2019 17:36

Tgt Ion	Resp	Lower	Upper
149	100		
167	6.6	5.0	7.4
279	0.9	0.6	1.0





#34
 Perylene-d12
 Concen: 0.400 ng
 RT: 23.74 min Scan# 2164
 Delta R.T. -0.00 min
 Lab File: BE100924.D
 Acq: 16 Dec 2019 17:36

Instrument :
 BNA_E
 ClientSampled :

Tot Ion	Ion	Ratio	Lower	Upper
30705	264	100		
	260	23.8	19.4	29.0
	265	24.5	20.1	30.1

