

Data Path : Z:\SVOASRV\HPCHEM1\BNA E\DATA\BE121918\
 Data File : BE098523.D
 Acq On : 19 Dec 2018 10:20
 Operator : SJ/JU
 Sample : J6405-05
 Misc :
 ALS Vial : 3 Sample Multiplier: 1

Instrument :
 BNA_E
 ClientSampleId :

Quant Time: Dec 19 11:01:22 2018
 Quant Method : Z:\SVOASRV\HPCHEM1\BNA E\METHODS\8270-SIM-BE121018.M
 Quant Title : ASP BNA STANDARDS FOR 5 POINT CALIBRATION
 QLast Update : Mon Dec 10 14:59:55 2018
 Response via : Initial Calibration

Internal Standards	R.T.	QIon	Response	Conc	Units	Dev(Min)
1) 1,4-Dichlorobenzene-d4	7.85	152	775	0.40	ng	-0.01
7) Naphthalene-d8	10.65	136	3813	0.40	ng	-0.01
13) Acenaphthene-d10	14.51	164	2712	0.40	ng	-0.01
19) Phenanthrene-d10	17.27	188	6692	0.40	ng	-0.01
27) Chrysene-d12	21.45	240	7495	0.40	ng	-0.01
34) Perylene-d12	23.99	264	6897	0.40	ng	-0.02

System Monitoring Compounds

4) 2-Fluorophenol	5.45	112	361	0.20	ng	0.00
5) Phenol-d6	7.05	99	348	0.14	ng	0.00
8) Nitrobenzene-d5	9.03	82	1159	0.33	ng	0.01
11) 2-Methylnaphthalene-d10	12.25	152	2953	0.48	ng	-0.01
14) 2,4,6-Tribromophenol	16.02	330	376	0.38	ng	0.00
15) 2-Fluorobiphenyl	13.13	172	5134	0.45	ng	-0.01
25) Fluoranthene-d10	19.30	212	39806	0.46	ng	-0.01
29) Terphenyl-d14	19.89	244	8305	0.46	ng	-0.02

Target Compounds

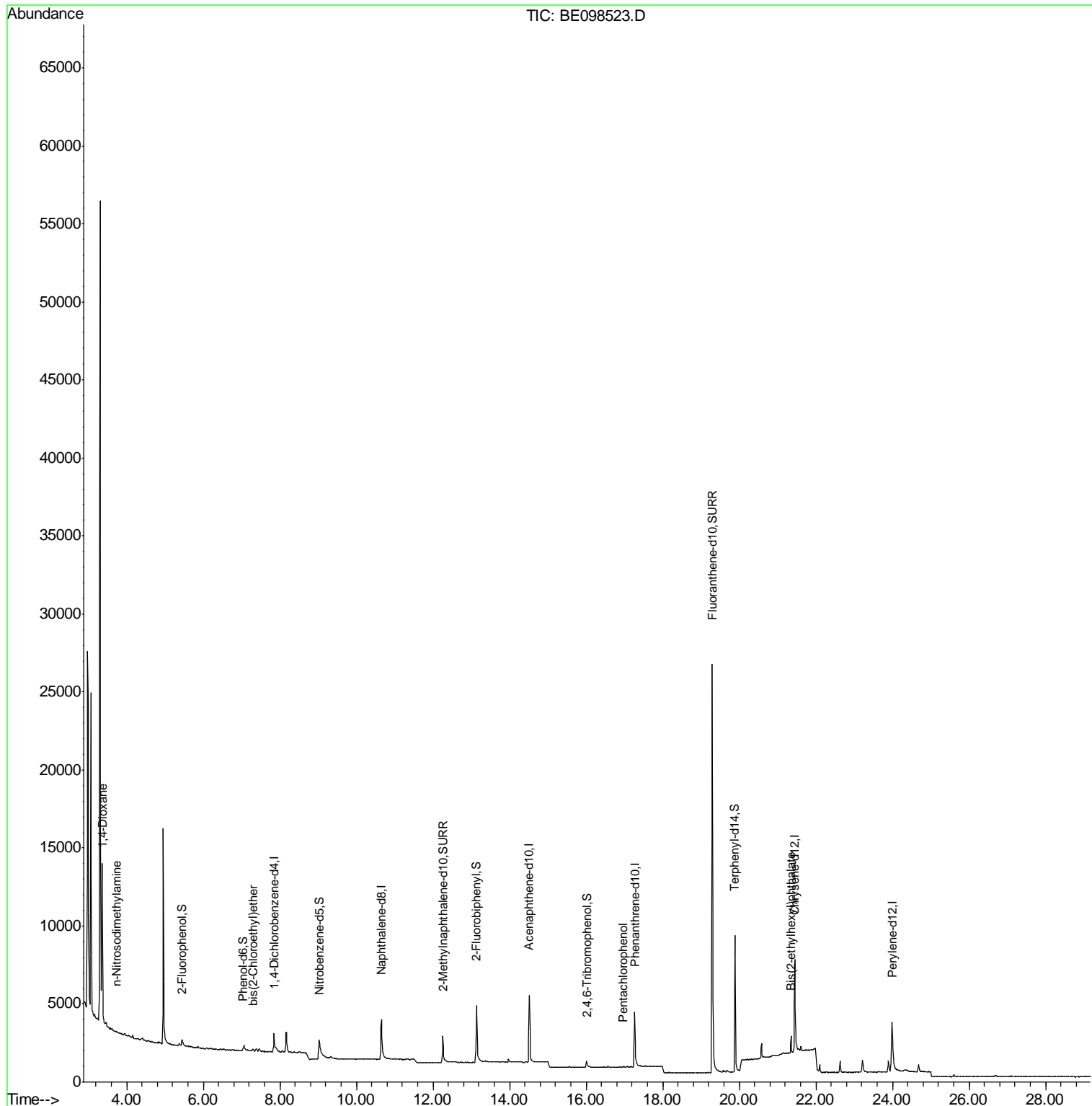
Target Compounds	R.T.	QIon	Response	Conc	Units	Qvalue
2) 1,4-Dioxane	3.36	88	5560	4.148	ng	97
3) n-Nitrosodimethylamine	3.73	42	48	0.040	ng	# 100
6) bis(2-Chloroethyl)ether	7.30	93	64	0.026	ng	# 74
22) Pentachlorophenol	16.95	266	8	0.030	ng	# 73
32) Bis(2-ethylhexyl)phthalate	21.35	149	1587	0.037	ng	98

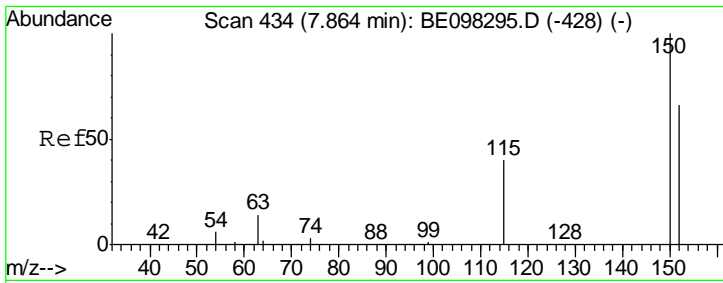
(#) = qualifier out of range (m) = manual integration (+) = signals summed

Data Path : Z:\SVOASRV\HPCHEM1\BNA E\DATA\BE121918\
 Data File : BE098523.D
 Acq On : 19 Dec 2018 10:20
 Operator : SJ/JU
 Sample : J6405-05
 Misc :
 ALS Vial : 3 Sample Multiplier: 1

Instrument :
 BNA_E
 ClientSampleId :

Quant Time: Dec 19 11:01:22 2018
 Quant Method : Z:\SVOASRV\HPCHEM1\BNA E\METHODS\8270-SIM-BE121018.M
 Quant Title : ASP BNA STANDARDS FOR 5 POINT CALIBRATION
 QLast Update : Mon Dec 10 14:59:55 2018
 Response via : Initial Calibration

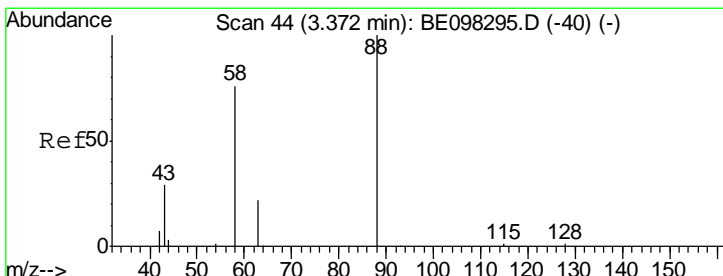
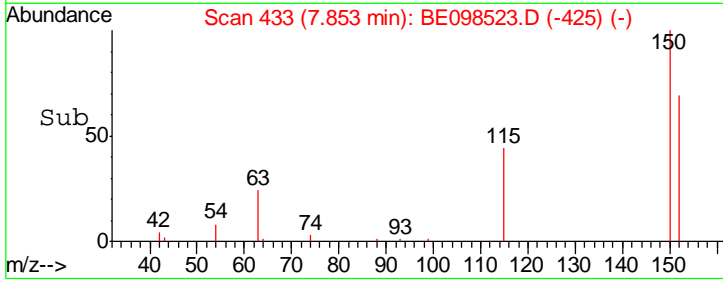
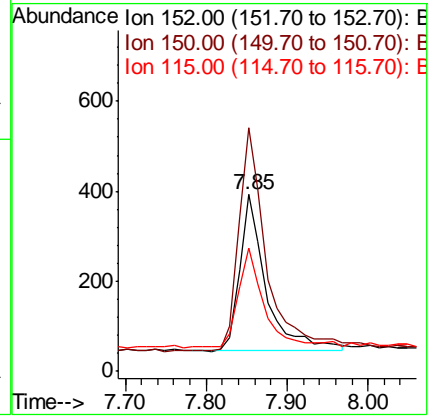
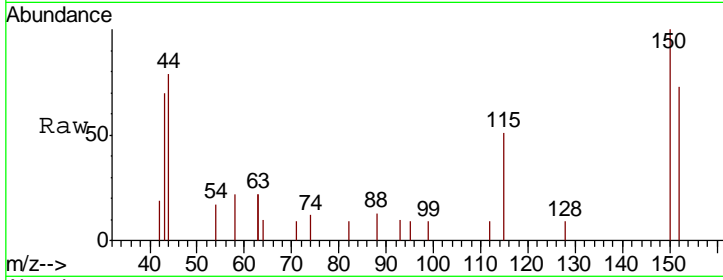




#1
 1,4-Dichlorobenzene-d4
 Concen: 0.400 ng
 RT: 7.85 min Scan# 433
 Delta R.T. -0.01 min
 Lab File: BE098523.D
 Acq: 19 Dec 2018 10:20

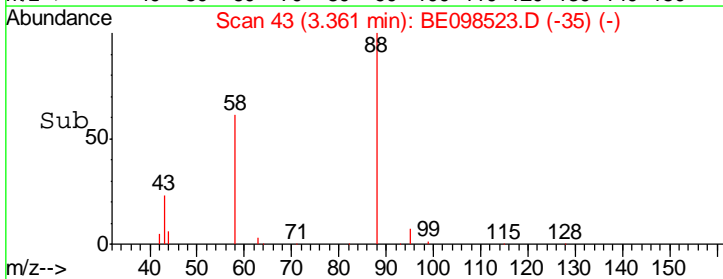
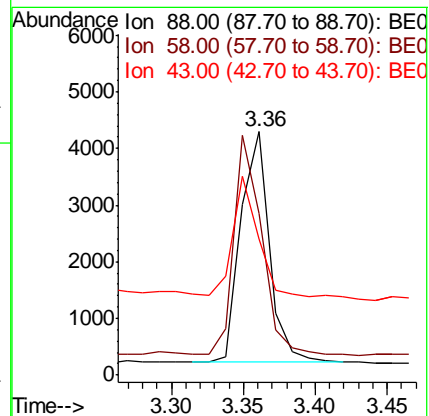
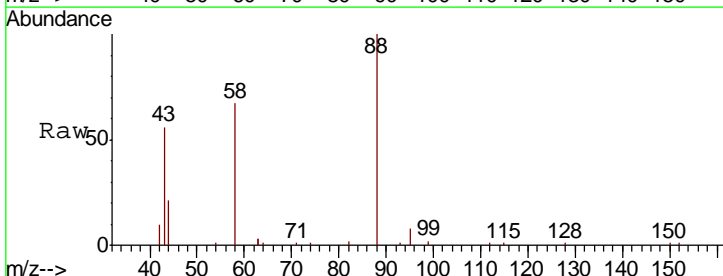
Instrument :
 BNA_E
 ClientSampled :

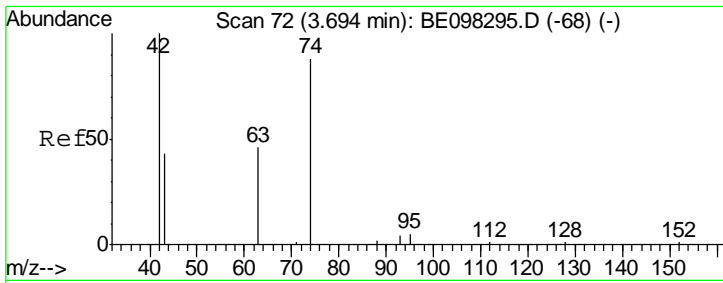
Tgt Ion	Resp	Lower	Upper
152	100		
150	137.7	124.2	186.4
115	70.0	53.9	80.9



#2
 1,4-Dioxane
 Concen: 4.148 ng
 RT: 3.36 min Scan# 43
 Delta R.T. -0.01 min
 Lab File: BE098523.D
 Acq: 19 Dec 2018 10:20

Tgt Ion	Resp	Lower	Upper
88	100		
58	91.8	75.0	112.6
43	45.6	38.3	57.5

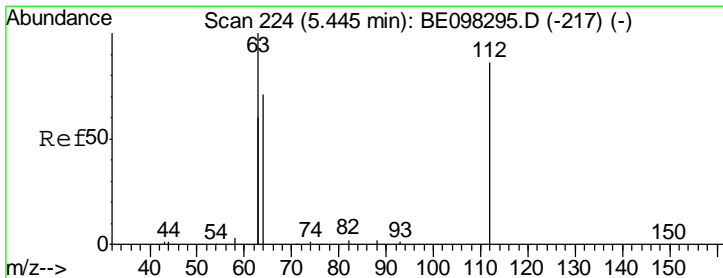
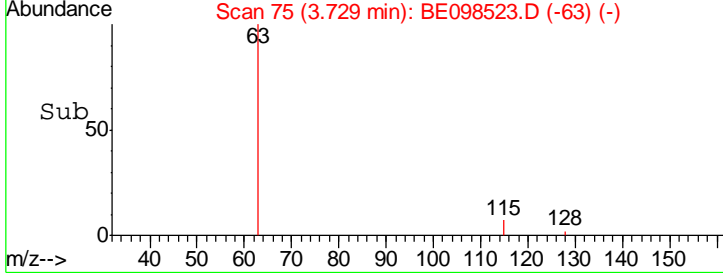
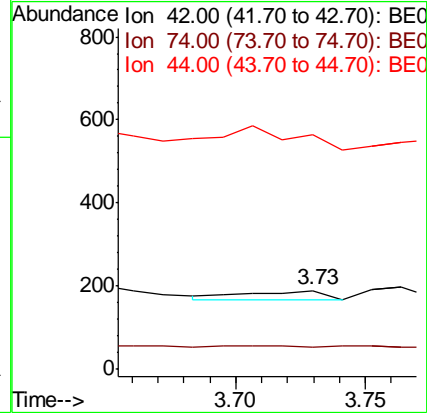
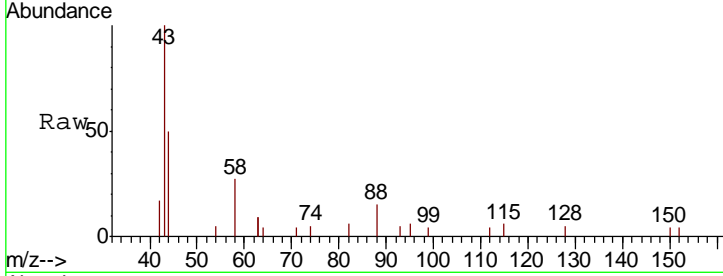




#3
 n-Nitrosodimethylamine
 Concen: 0.040 ng
 RT: 3.73 min Scan# 75
 Delta R.T. 0.04 min
 Lab File: BE098523.D
 Acq: 19 Dec 2018 10:20

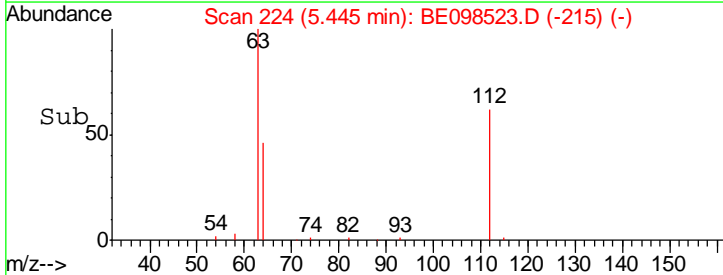
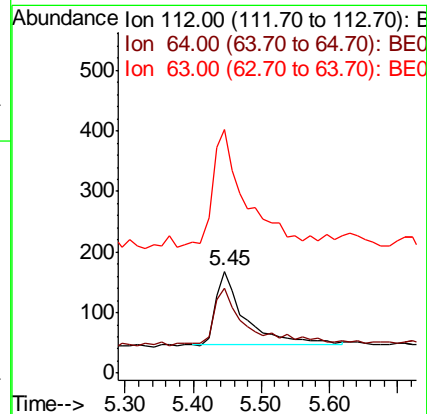
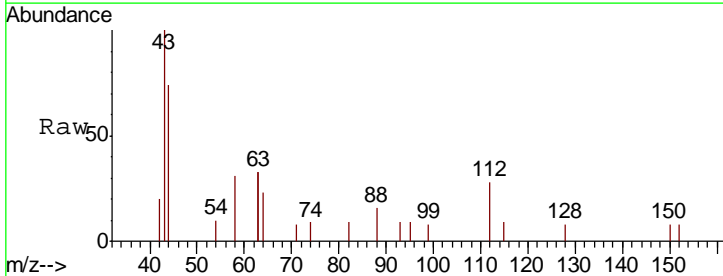
Instrument :
 BNA_E
 ClientSampled :

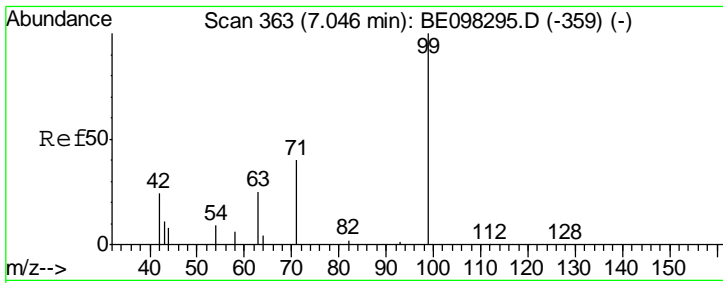
Tgt Ion	Ratio	Lower	Upper
42	100		
74	0.0	0.0	0.0
44	0.0	0.0	0.0



#4
 2-Fluorophenol
 Concen: 0.199 ng
 RT: 5.45 min Scan# 224
 Delta R.T. 0.00 min
 Lab File: BE098523.D
 Acq: 19 Dec 2018 10:20

Tgt Ion	Ratio	Lower	Upper
112	100		
64	91.1	59.8	89.8#
63	169.3	133.7	200.5

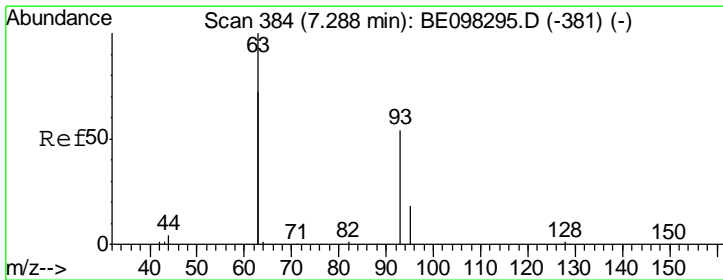
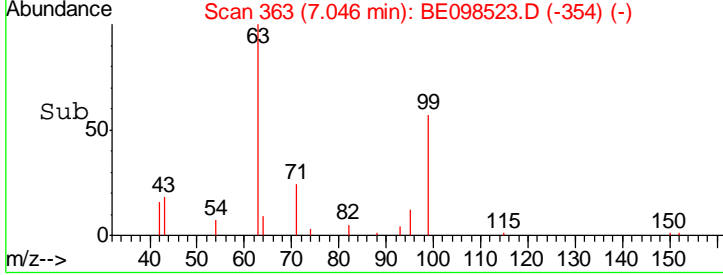
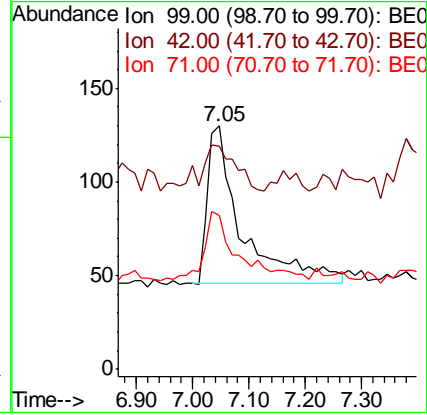
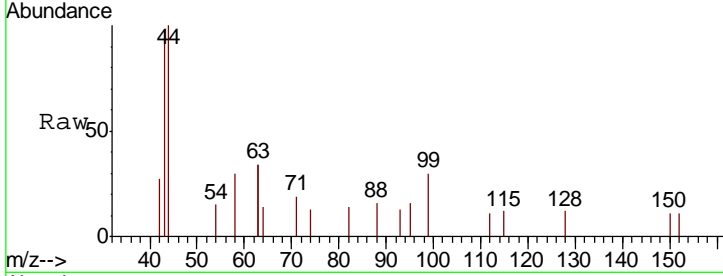




#5
 Phenol-d6
 Concen: 0.135 ng
 RT: 7.05 min Scan# 363
 Delta R.T. 0.00 min
 Lab File: BE098523.D
 Acq: 19 Dec 2018 10:20

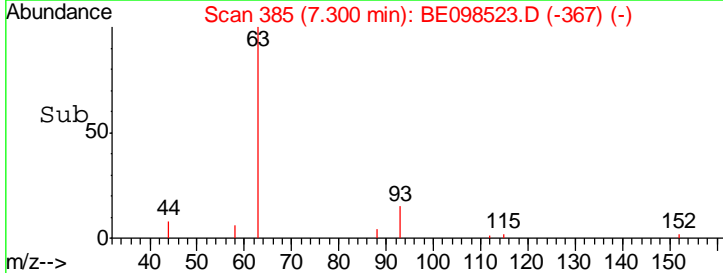
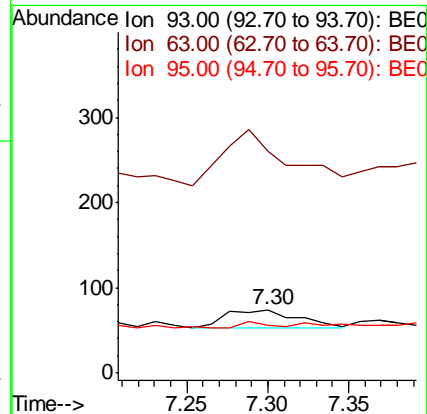
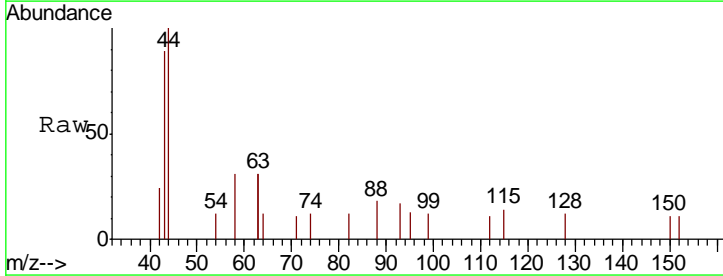
Instrument :
 BNA_E
 ClientSampled :

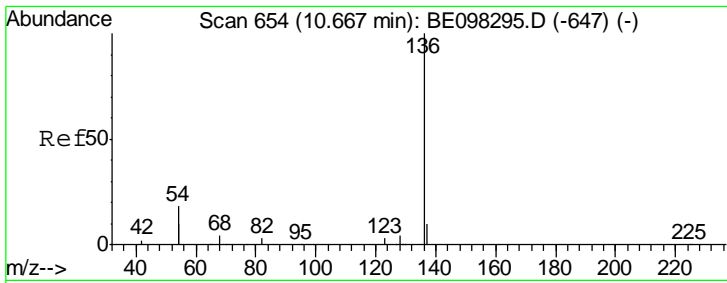
Tgt Ion	Resp	Lower	Upper
99	348		
42	29.0	26.3	39.5
71	40.2	33.6	50.4



#6
 bis(2-Chloroethyl)ether
 Concen: 0.026 ng
 RT: 7.30 min Scan# 385
 Delta R.T. 0.01 min
 Lab File: BE098523.D
 Acq: 19 Dec 2018 10:20

Tgt Ion	Resp	Lower	Upper
93	64		
63	278.1	264.4	396.6
95	10.9	26.6	40.0#

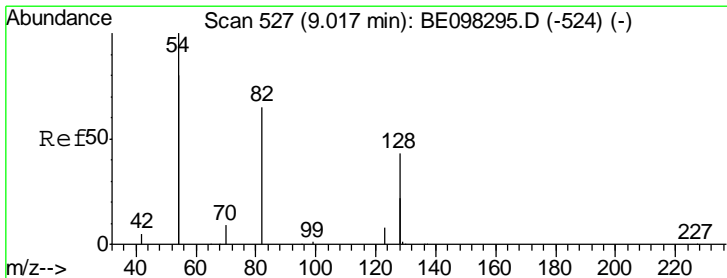
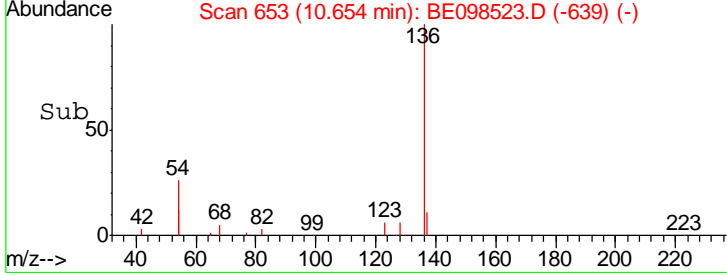
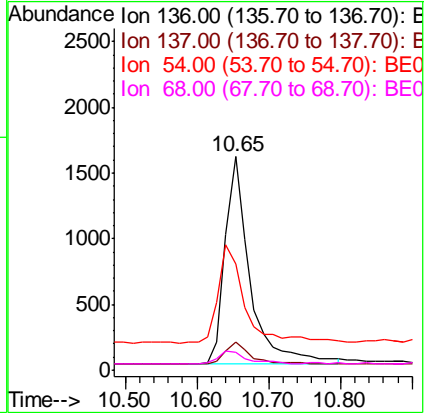
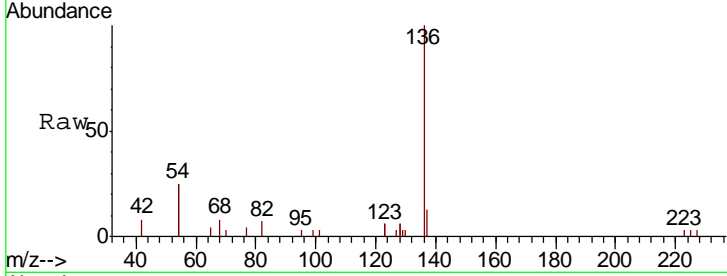




#7
 Naphthalene-d8
 Concen: 0.400 ng
 RT: 10.65 min Scan# 653
 Delta R.T. -0.01 min
 Lab File: BE098523.D
 Acq: 19 Dec 2018 10:20

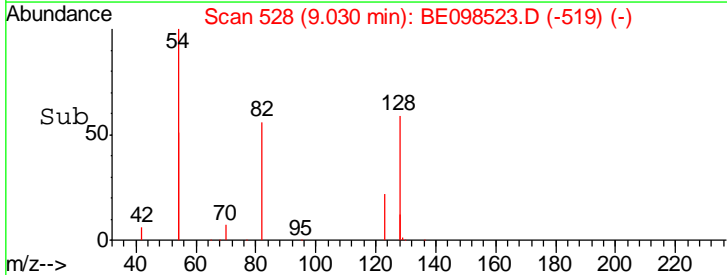
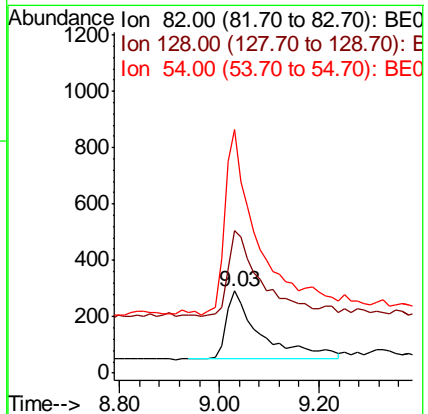
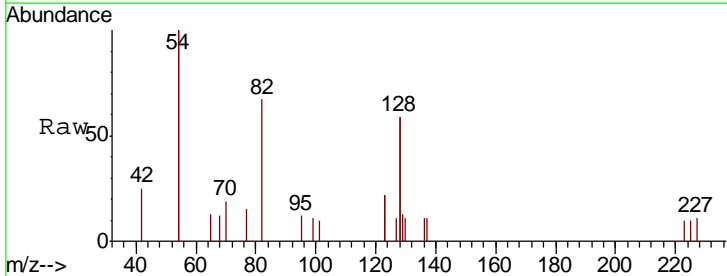
Instrument :
 BNA_E
 ClientSampled :

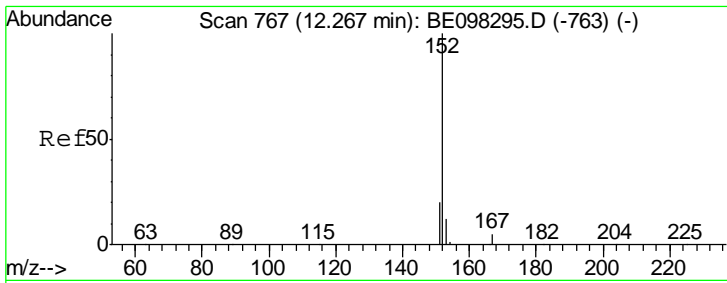
Tgt Ion	Resp	Lower	Upper
136	3813		
137	13.2	9.2	13.8
54	49.8	28.4	42.6#
68	8.2	5.4	8.0#



#8
 Nitrobenzene-d5
 Concen: 0.334 ng
 RT: 9.03 min Scan# 528
 Delta R.T. 0.01 min
 Lab File: BE098523.D
 Acq: 19 Dec 2018 10:20

Tgt Ion	Resp	Lower	Upper
82	1159		
82	100		
128	175.2	102.4	153.6#
54	297.9	221.8	332.8



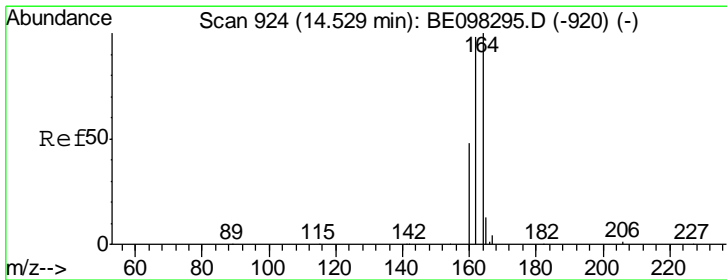
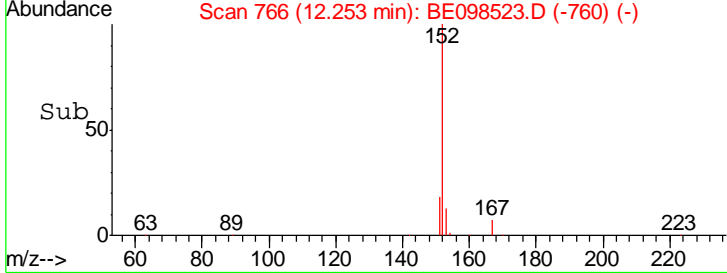
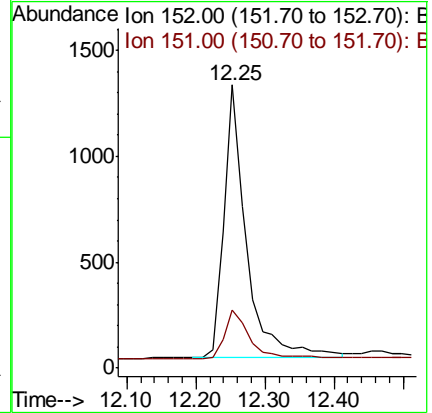
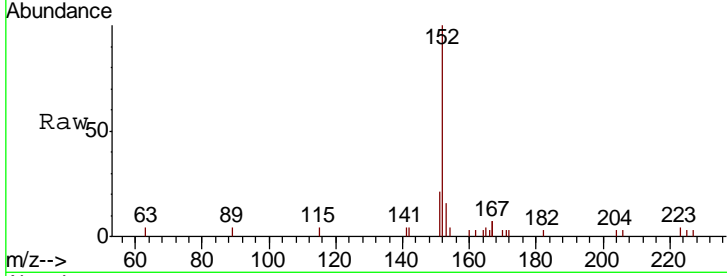


#11
 2-Methylnaphthalene-d10
 Concen: 0.476 ng
 RT: 12.25 min Scan# 766
 Delta R.T. -0.01 min
 Lab File: BE098523.D
 Acq: 19 Dec 2018 10:20

Instrument :
 BNA_E
 ClientSampled :

Tgt Ion: 152 Resp: 2953

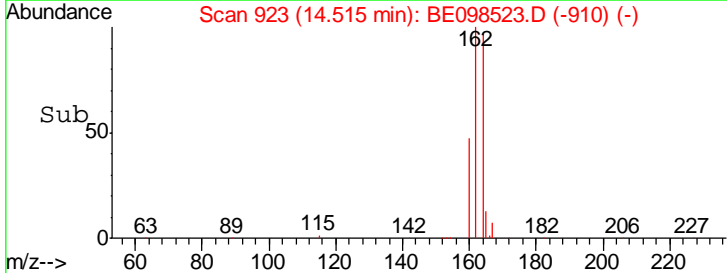
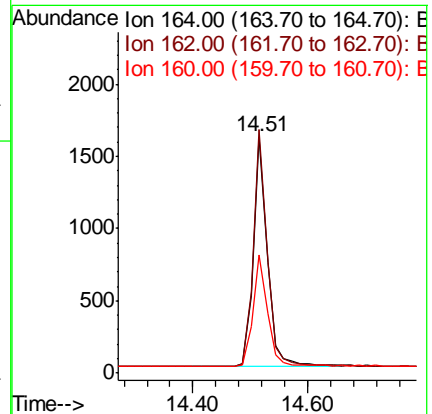
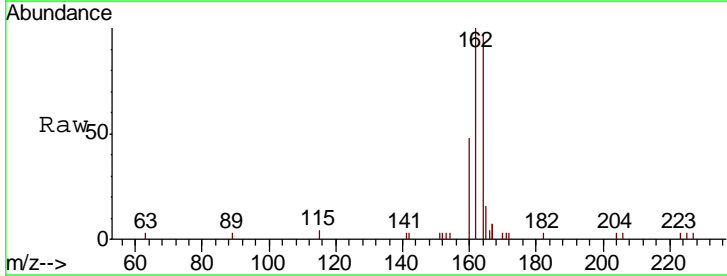
Ion	Ratio	Lower	Upper
152	100		
151	19.5	16.2	24.4

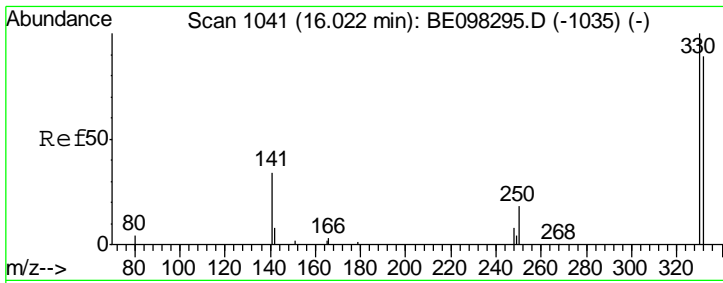


#13
 Acenaphthene-d10
 Concen: 0.400 ng
 RT: 14.51 min Scan# 923
 Delta R.T. -0.01 min
 Lab File: BE098523.D
 Acq: 19 Dec 2018 10:20

Tgt Ion: 164 Resp: 2712

Ion	Ratio	Lower	Upper
164	100		
162	103.1	77.6	116.4
160	50.0	36.0	54.0

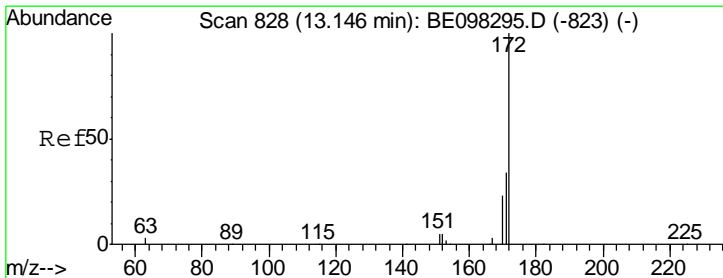
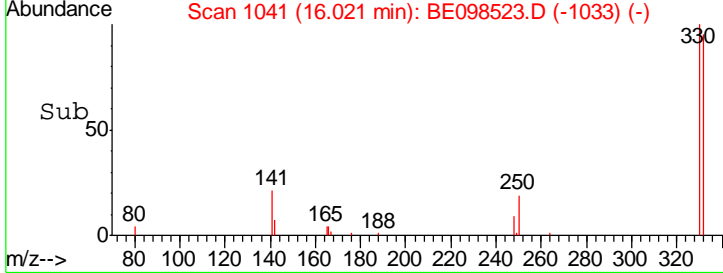
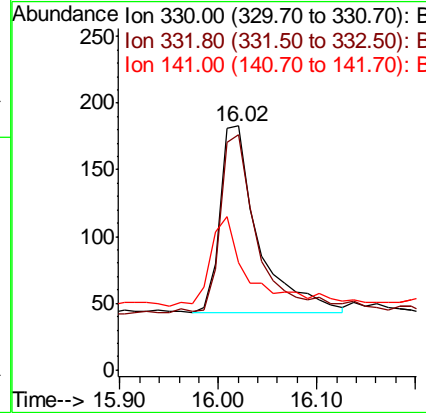
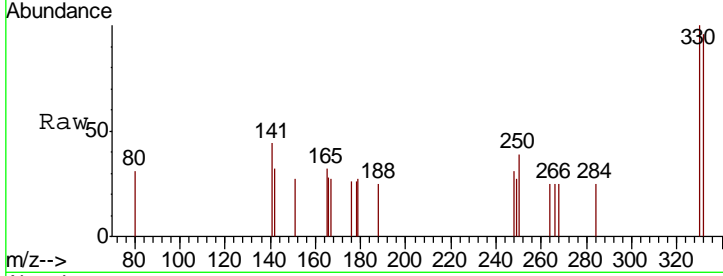




#14
 2,4,6-Tribromophenol
 Concen: 0.378 ng
 RT: 16.02 min Scan# 1041
 Delta R.T. -0.00 min
 Lab File: BE098523.D
 Acq: 19 Dec 2018 10:20

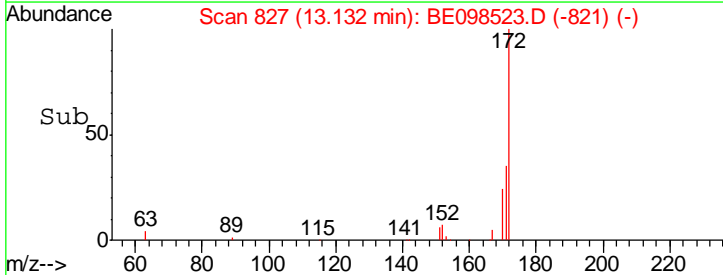
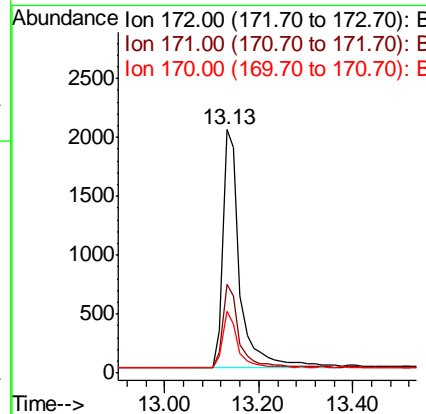
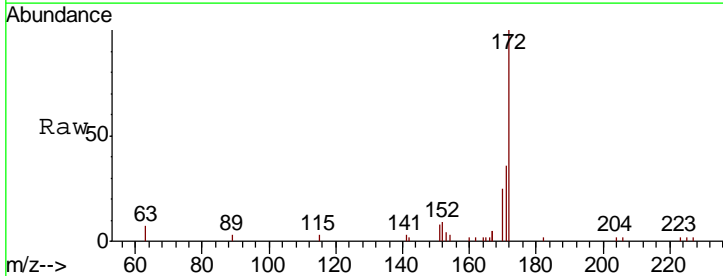
Instrument :
 BNA_E
 ClientSampled :

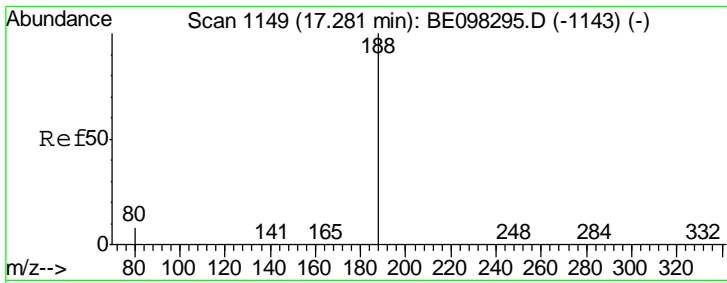
Tgt Ion	Resp	Lower	Upper
330	100		
332	97.6	76.2	114.4
141	50.5	39.0	58.4



#15
 2-Fluorobiphenyl
 Concen: 0.449 ng
 RT: 13.13 min Scan# 827
 Delta R.T. -0.01 min
 Lab File: BE098523.D
 Acq: 19 Dec 2018 10:20

Tgt Ion	Resp	Lower	Upper
172	100		
171	36.4	27.5	41.3
170	25.4	19.6	29.4

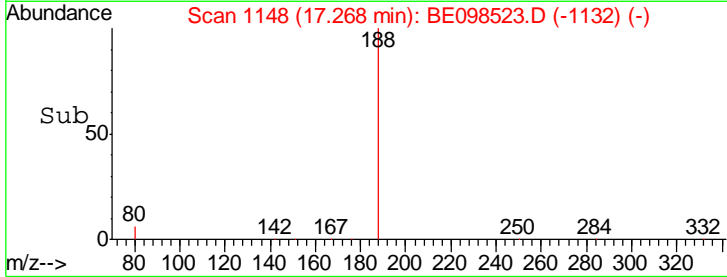
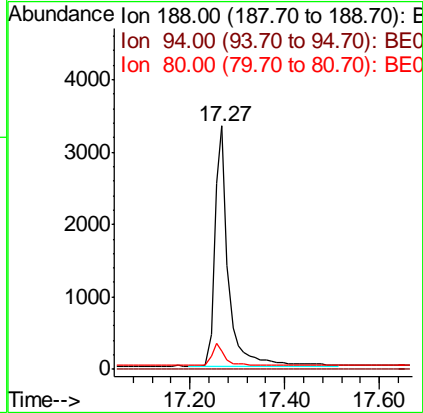
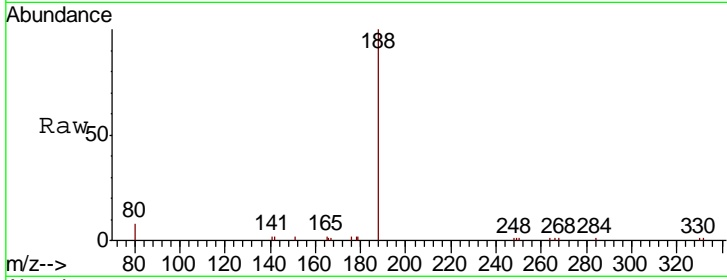




#19
 Phenanthrene-d10
 Concen: 0.400 ng
 RT: 17.27 min Scan# 1148
 Delta R.T. -0.01 min
 Lab File: BE098523.D
 Acq: 19 Dec 2018 10:20

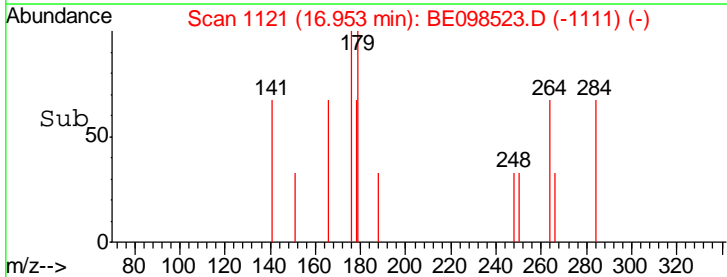
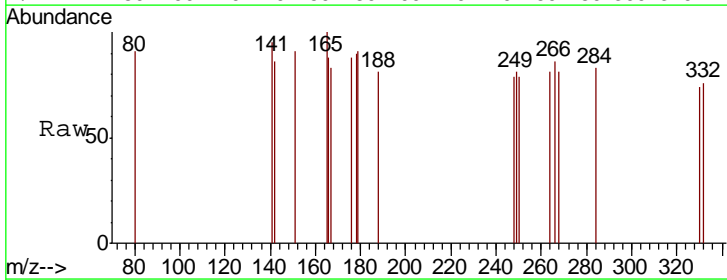
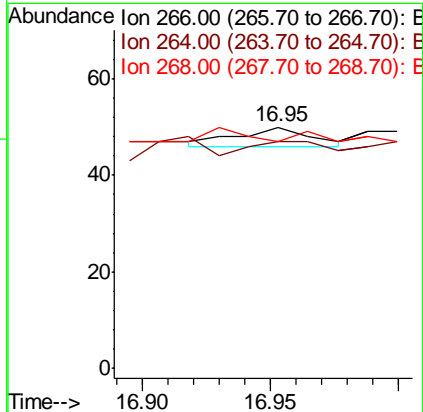
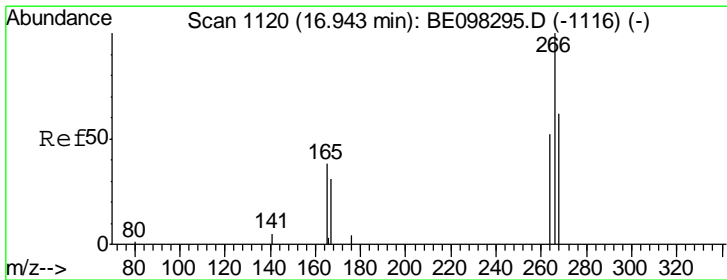
Instrument :
 BNA_E
 ClientSampled :

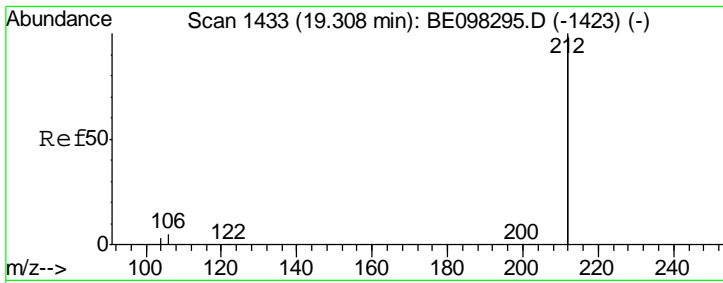
Tgt Ion	Resp	Lower	Upper
188	100		
94	0.0	0.0	0.0
80	7.7	7.2	10.8



#22
 Pentachlorophenol
 Concen: 0.030 ng
 RT: 16.95 min Scan# 1121
 Delta R.T. 0.01 min
 Lab File: BE098523.D
 Acq: 19 Dec 2018 10:20

Tgt Ion	Resp	Lower	Upper
266	100		
264	94.0	59.0	88.4#
268	94.0	55.1	82.7#

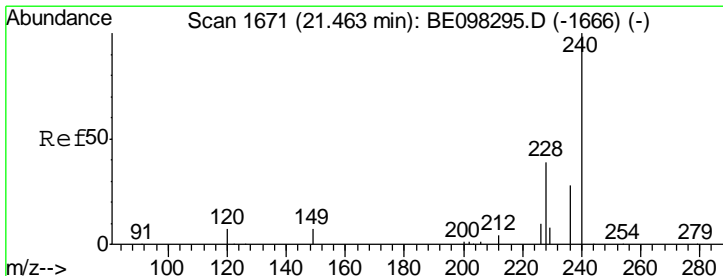
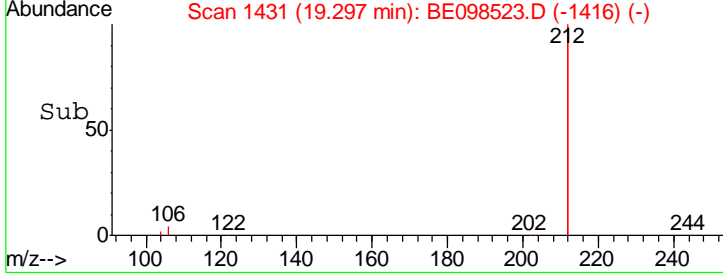
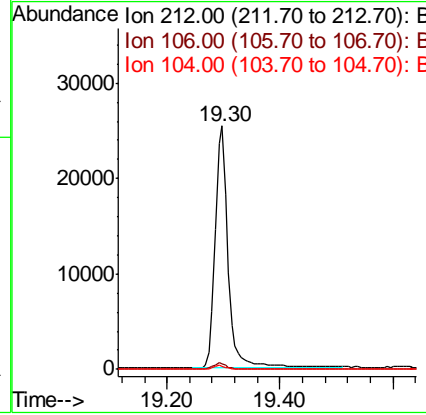
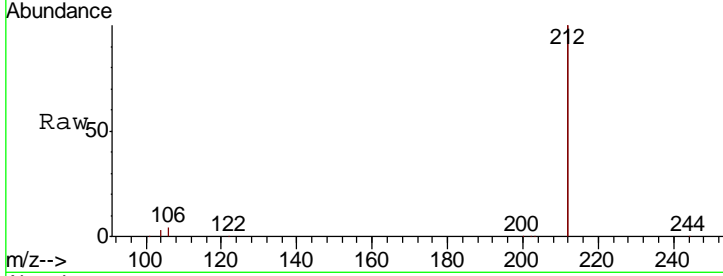




#25
 Fluoranthene-d10
 Concen: 0.464 ng
 RT: 19.30 min Scan# 1431
 Delta R.T. -0.01 min
 Lab File: BE098523.D
 Acq: 19 Dec 2018 10:20

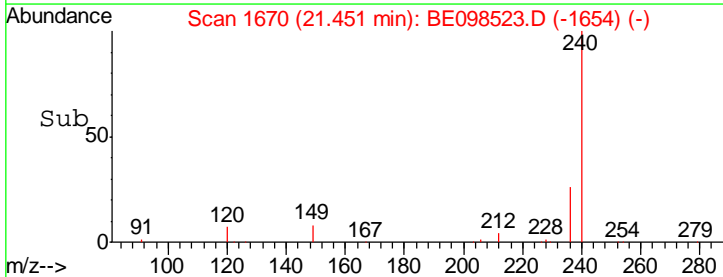
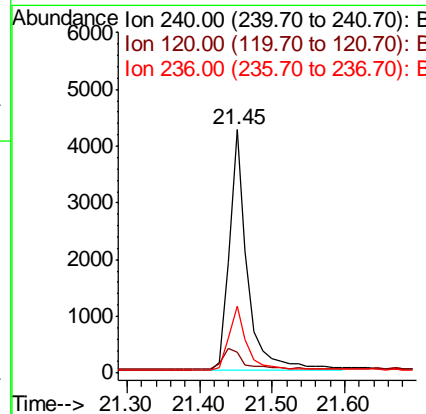
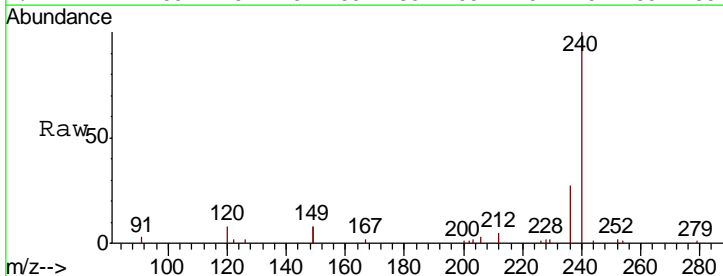
Instrument :
 BNA_E
 ClientSampleId :

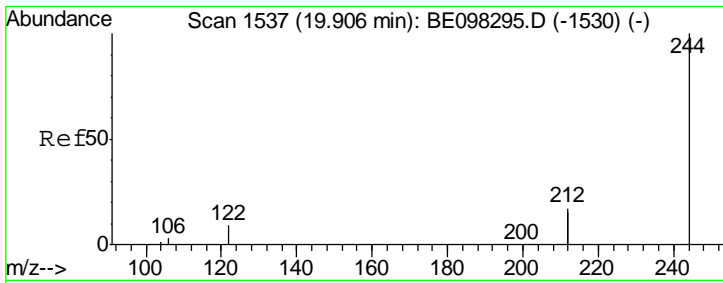
Tgt Ion	Resp	Lower	Upper
212	39806		
106	2.3	2.2	3.2
104	1.5	1.3	1.9



#27
 Chrysene-d12
 Concen: 0.400 ng
 RT: 21.45 min Scan# 1670
 Delta R.T. -0.01 min
 Lab File: BE098523.D
 Acq: 19 Dec 2018 10:20

Tgt Ion	Resp	Lower	Upper
240	7495		
120	8.4	9.5	14.3#
236	27.4	22.7	34.1

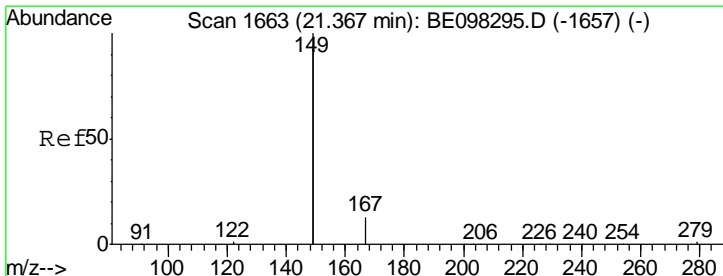
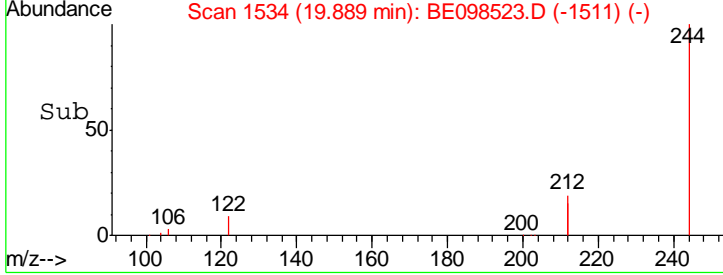
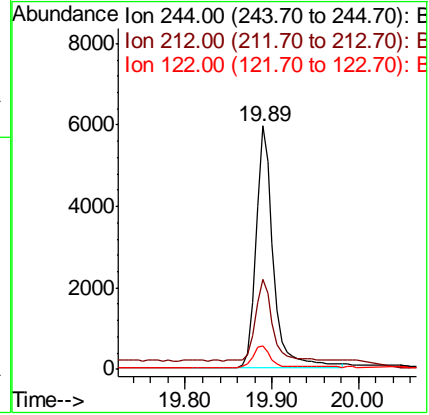
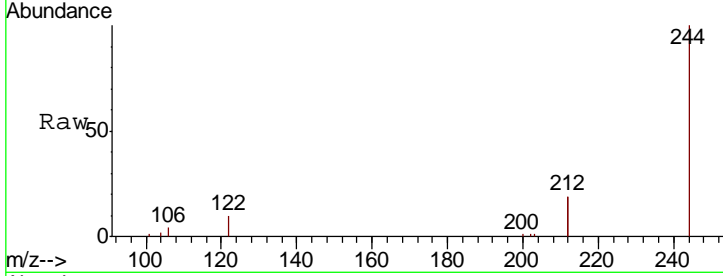




#29
 Terphenyl-d14
 Concen: 0.456 ng
 RT: 19.89 min Scan# 1534
 Delta R.T. -0.02 min
 Lab File: BE098523.D
 Acq: 19 Dec 2018 10:20

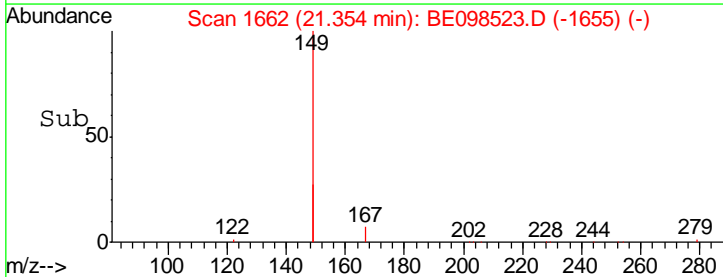
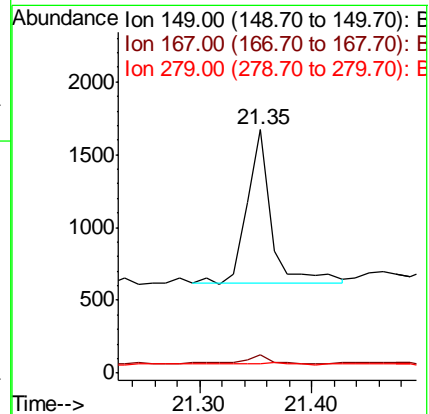
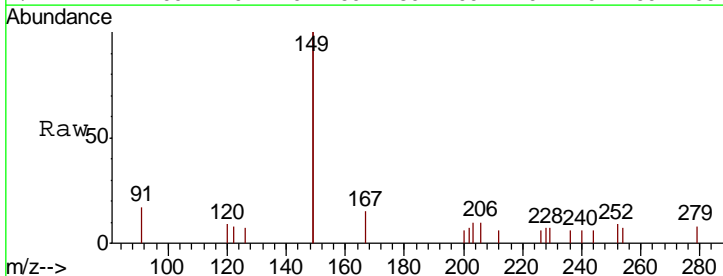
Instrument :
 BNA_E
 ClientSampled :

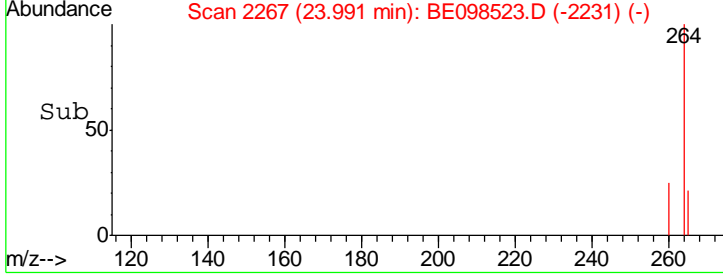
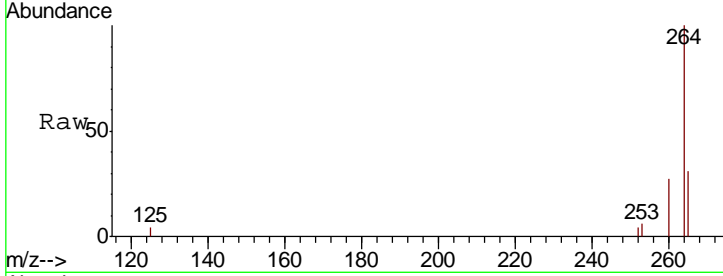
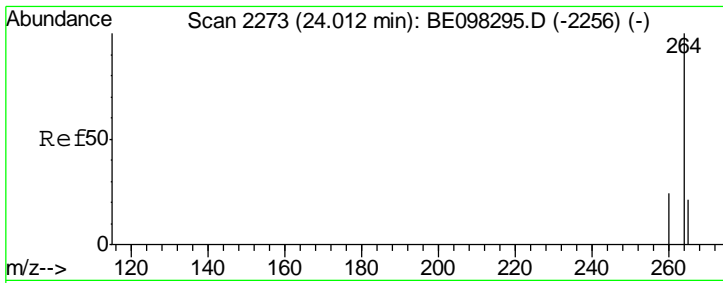
Tgt Ion	Resp	Lower	Upper
244	100		
212	37.1	27.4	41.0
122	9.6	8.3	12.5



#32
 Bis(2-ethylhexyl)phthalate
 Concen: 0.037 ng
 RT: 21.35 min Scan# 1662
 Delta R.T. -0.01 min
 Lab File: BE098523.D
 Acq: 19 Dec 2018 10:20

Tgt Ion	Resp	Lower	Upper
149	100		
167	6.5	5.7	8.5
279	1.3	1.0	1.4





#34
 Perylene-d12
 Concen: 0.400 ng
 RT: 23.99 min Scan# 2267
 Delta R.T. -0.02 min
 Lab File: BE098523.D
 Acq: 19 Dec 2018 10:20

Instrument :
 BNA_E
 ClientSampled :

Tot Ion: 264 Resp: 6897

Ion	Ratio	Lower	Upper
264	100		
260	26.9	20.2	30.2
265	30.9	25.2	37.8

