

Data Path : Z:\SVOASRV\HPCHEM1\BNA E\DATA\BE020720\
 Data File : BE101141.D
 Acq On : 7 Feb 2020 17:06
 Operator : CG/JU
 Sample : SP5041
 Misc :
 ALS Vial : 8 Sample Multiplier: 1

Instrument :
 BNA_E
 ClientSampled :
 SP5041

Manual Integrations
 APPROVED

mohammad
 2/11/2020 8:27:10 AM

Quant Time: Feb 07 18:19:48 2020
 Quant Method : Z:\SVOASRV\HPCHEM1\BNA E\METHODS\8270-SIM-BE010820.M
 Quant Title : ASP BNA STANDARDS FOR 5 POINT CALIBRATION
 QLast Update : Wed Jan 08 18:36:25 2020
 Response via : Initial Calibration

Internal Standards	R.T.	QIon	Response	Conc	Units	Dev(Min)
1) 1,4-Dichlorobenzene-d4	7.70	152	1987	0.40	ng	-0.03
7) Naphthalene-d8	10.47	136	8246	0.40	ng	-0.03
13) Acenaphthene-d10	14.34	164	4618	0.40	ng	-0.01
19) Phenanthrene-d10	17.08	188	9877	0.40	ng	-0.01
27) Chrysene-d12	21.27	240	7832	0.40	ng	-0.01
34) Perylene-d12	23.68	264	10223	0.40	ng	-0.02

System Monitoring Compounds

4) 2-Fluorophenol	5.32	112	3	0.00	ng	-0.02
5) Phenol-d6	6.93	99	11	0.00	ng	0.01
8) Nitrobenzene-d5	8.87	82	49	0.01	ng	0.00
11) 2-Methylnaphthalene-d10	12.07	152	211	0.01	ng	-0.04
14) 2,4,6-Tribromophenol	15.83	330	2	0.00	ng	-0.01
15) 2-Fluorobiphenyl	13.02	172	8	0.00	ng	0.01
25) Fluoranthene-d10	19.12	212	9	0.00	ng	-0.02
29) Terphenyl-d14	19.72	244	7	0.00	ng	-0.01

Target Compounds

Target Compounds	R.T.	QIon	Response	Conc	Units	Qvalue
2) 1,4-Dioxane	3.27	88	1902	0.395	ng	# 42
3) n-Nitrosodimethylamine	3.58	42	1188	0.430	ng	# 78
6) bis(2-Chloroethyl)ether	7.15	93	2980m	0.442	ng	
9) Naphthalene	10.52	128	43401	0.474	ng	100
10) Hexachlorobutadiene	10.81	225	1838	0.474	ng	98
12) 2-Methylnaphthalene	12.17	142	5990	0.432	ng	99
16) Acenaphthylene	14.05	152	9809	0.522	ng	99
17) Acenaphthene	14.40	154	6207	0.461	ng	99
18) Fluorene	15.38	166	7464	0.439	ng	100
20) 4-Bromophenyl-phenylether	16.28	248	2286	0.475	ng	# 92
21) Hexachlorobenzene	16.38	284	2434	0.461	ng	98
23) Phenanthrene	17.12	178	11610	0.430	ng	99
24) Anthracene	17.21	178	12021	0.472	ng	99
26) Fluoranthene	19.14	202	13571	0.402	ng	99
28) Pyrene	19.51	202	14315	0.491	ng	100
30) Benzo(a)anthracene	21.25	228	9037	0.404	ng	99
31) Chrysene	21.29	228	16588	0.499	ng	97
32) Bis(2-ethylhexyl)phthalate	21.17	149	20920	0.562	ng	99
33) Indeno(1,2,3-cd)pyrene	26.23	276	18621	0.710	ng	96
35) Benzo(b)fluoranthene	22.94	252	10502	0.366	ng	98
36) Benzo(k)fluoranthene	22.99	252	17931m	0.432	ng	
37) Benzo(a)pyrene	23.58	252	13416	0.484	ng	99
38) Dibenzo(a,h)anthracene	26.25	278	14921	0.585	ng	96
39) Benzo(g,h,i)perylene	27.00	276	17735	0.565	ng	99

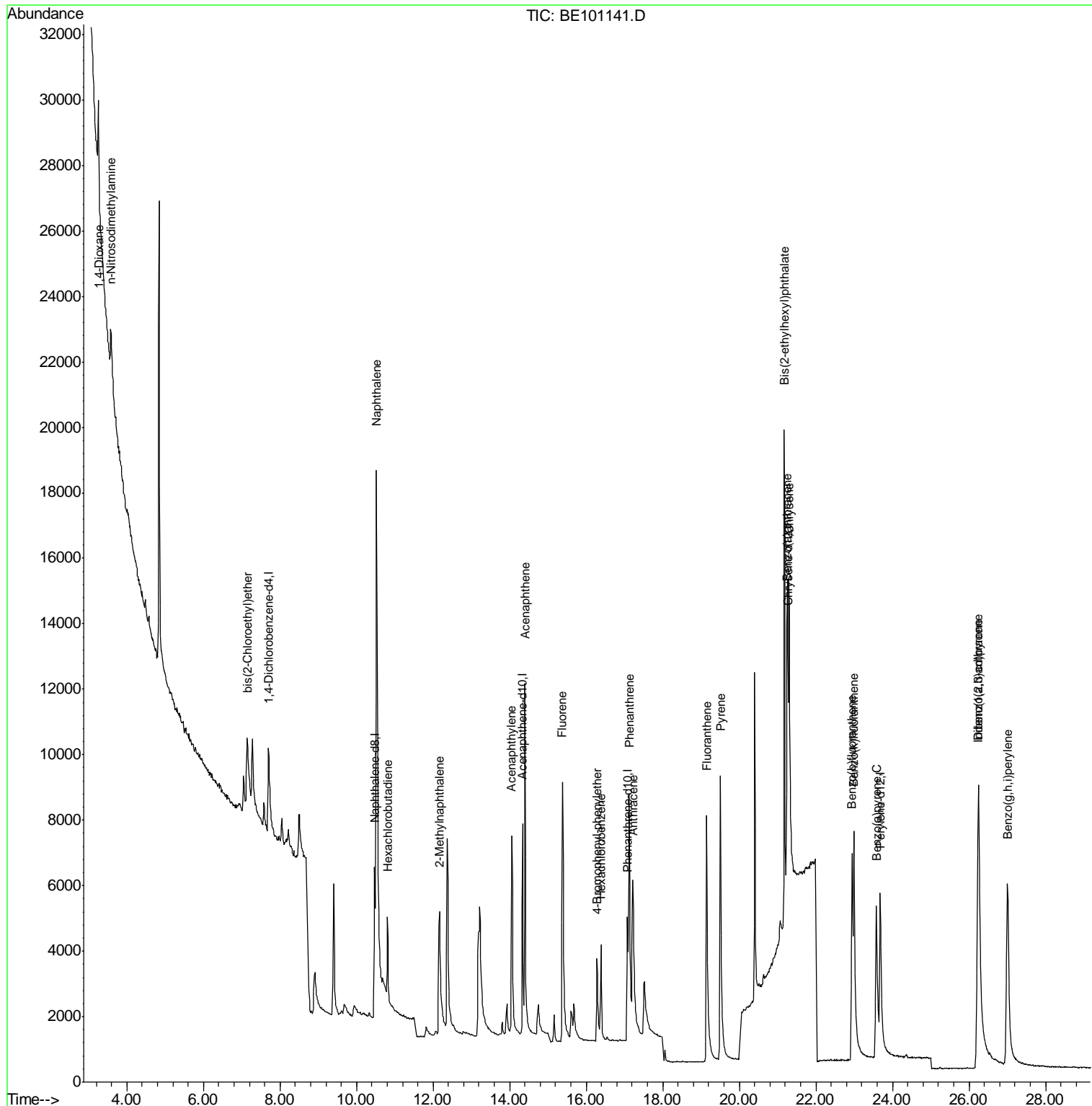
(#) = qualifier out of range (m) = manual integration (+) = signals summed

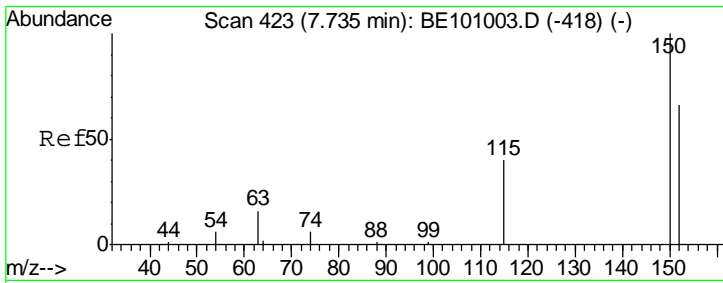
Data Path : Z:\SVOASRV\HPCHEM1\BNA E\DATA\BE020720\
 Data File : BE101141.D
 Acq On : 7 Feb 2020 17:06
 Operator : CG/JU
 Sample : SP5041
 Misc :
 ALS Vial : 8 Sample Multiplier: 1

Instrument :
 BNA_E
 Client Sampled :
 SP5041

Manual Integrations
APPROVED
 mohammad
 2/11/2020 8:27:10 AM

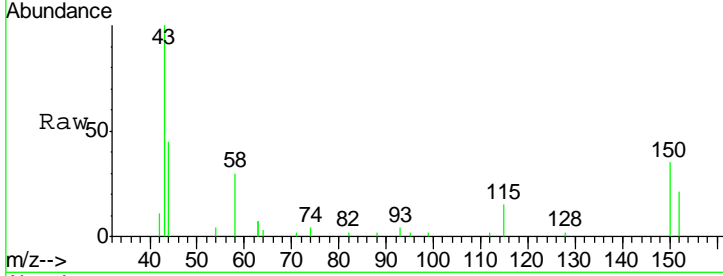
Quant Time: Feb 07 18:19:48 2020
 Quant Method : Z:\SVOASRV\HPCHEM1\BNA E\METHODS\8270-SIM-BE010820.M
 Quant Title : ASP BNA STANDARDS FOR 5 POINT CALIBRATION
 QLast Update : Wed Jan 08 18:36:25 2020
 Response via : Initial Calibration





#1
 1,4-Dichlorobenzene-d4
 Concen: 0.400 ng
 RT: 7.70 min Scan# 420
 Delta R.T. -0.03 min
 Lab File: BE101141.D
 Acq: 7 Feb 2020 17:06

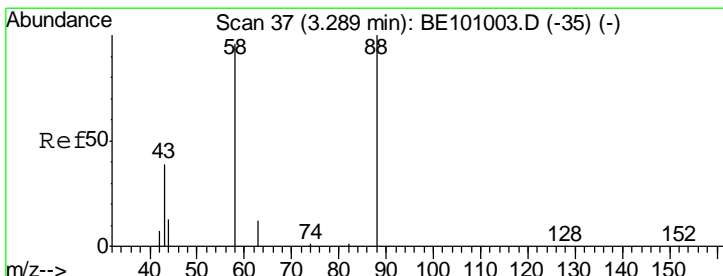
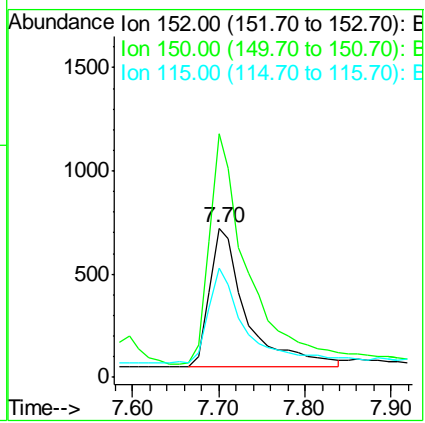
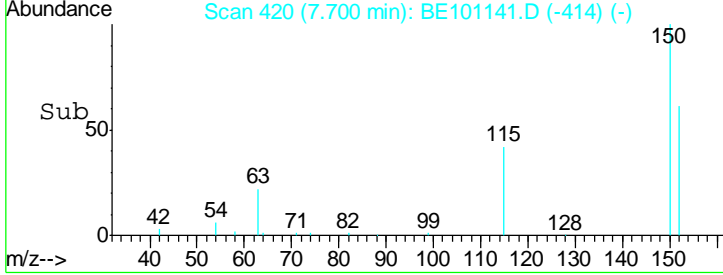
Instrument :
 BNA_E
ClientSampled :
 SP5041



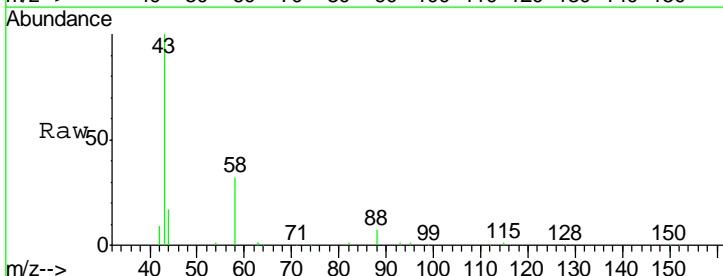
Tgt Ion: 152 Resp: 1987

Ion	Ratio	Lower	Upper
152	100		
150	163.1	120.3	180.5
115	72.9	51.7	77.5

Manual Integrations
APPROVED
 mohammad
 2/11/2020 8:27:10 AM

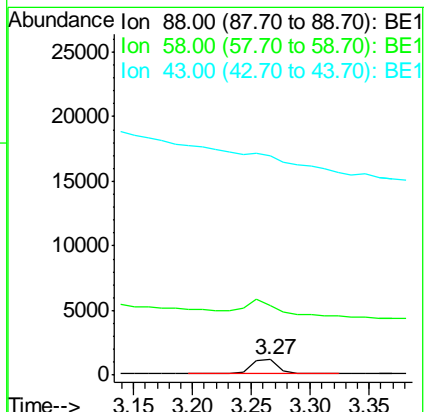
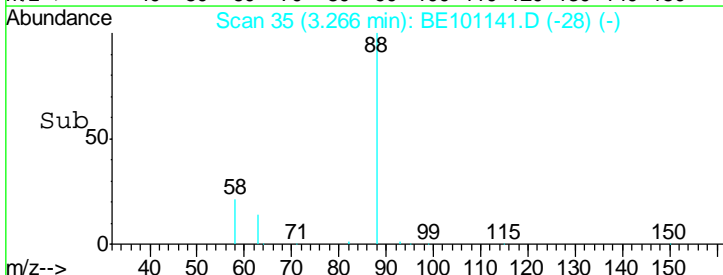


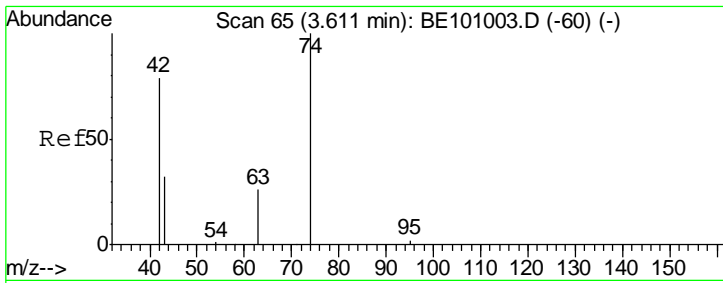
#2
 1,4-Dioxane
 Concen: 0.395 ng
 RT: 3.27 min Scan# 35
 Delta R.T. -0.02 min
 Lab File: BE101141.D
 Acq: 7 Feb 2020 17:06



Tgt Ion: 88 Resp: 1902

Ion	Ratio	Lower	Upper
88	100		
58	113.6	53.0	79.4#
43	0.0	23.4	35.2#





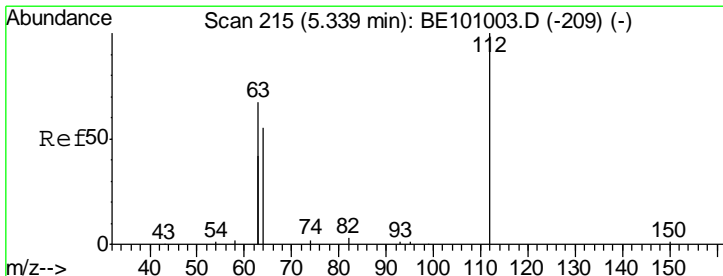
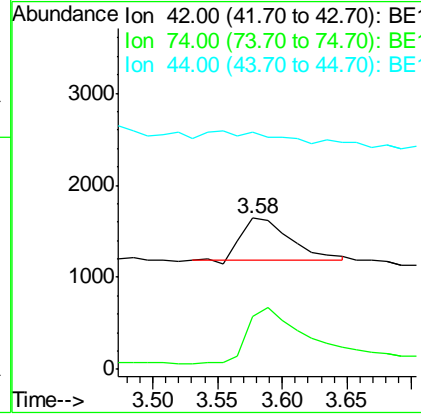
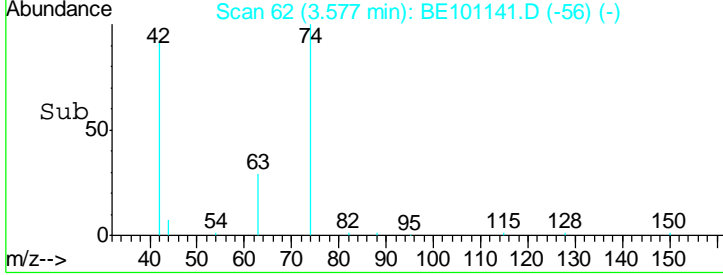
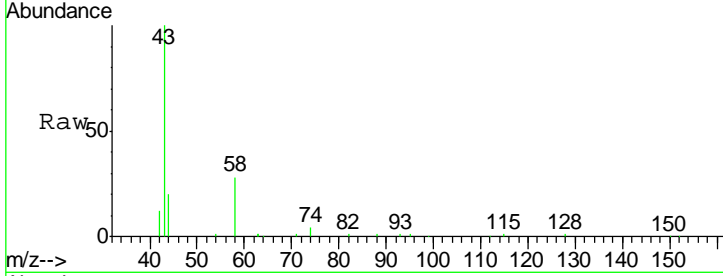
#3
 n-Nitrosodimethylamine
 Concen: 0.430 ng
 RT: 3.58 min Scan# 62
 Delta R.T. -0.03 min
 Lab File: BE101141.D
 Acq: 7 Feb 2020 17:06

Instrument :
 BNA_E
ClientSampled :
 SP5041

Tgt Ion	Resp	Lower	Upper
42	100		
74	156.6	105.7	158.5
44	0.0	10.0	15.0#

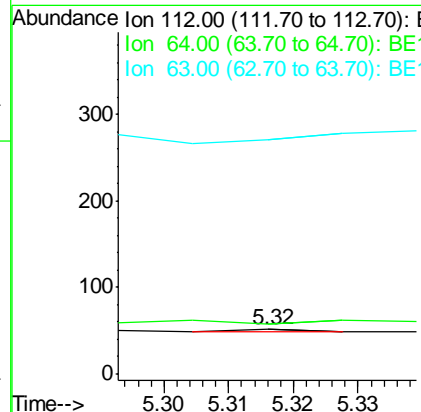
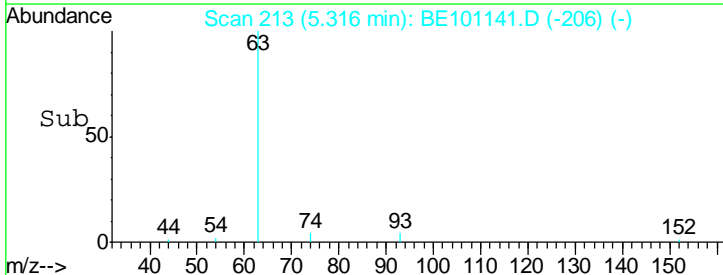
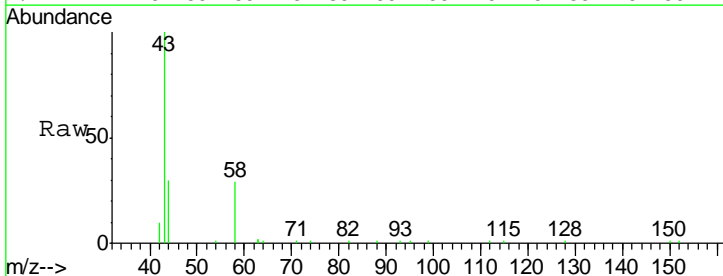
Manual Integrations
APPROVED

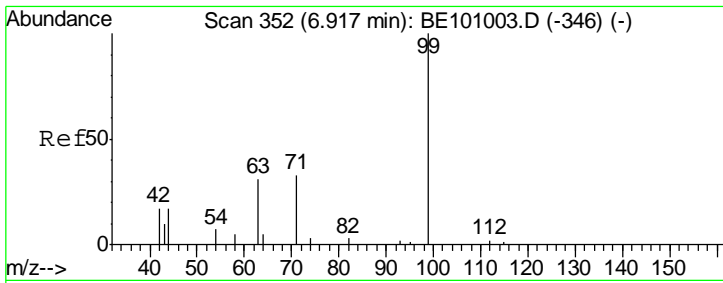
mohammad
 2/11/2020 8:27:10 AM



#4
 2-Fluorophenol
 Concen: 0.001 ng
 RT: 5.32 min Scan# 213
 Delta R.T. -0.02 min
 Lab File: BE101141.D
 Acq: 7 Feb 2020 17:06

Tgt Ion	Resp	Lower	Upper
112	100		
64	100.0	53.6	80.4#
63	0.0	114.6	172.0#





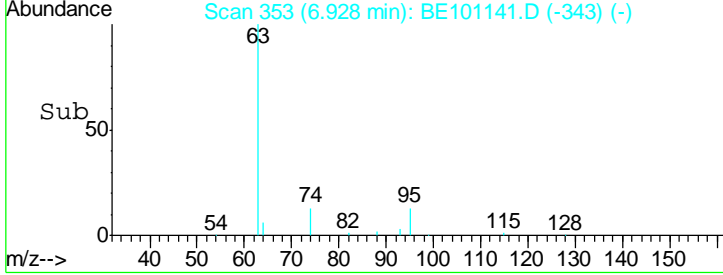
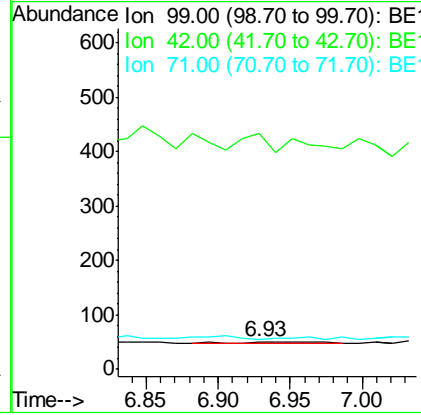
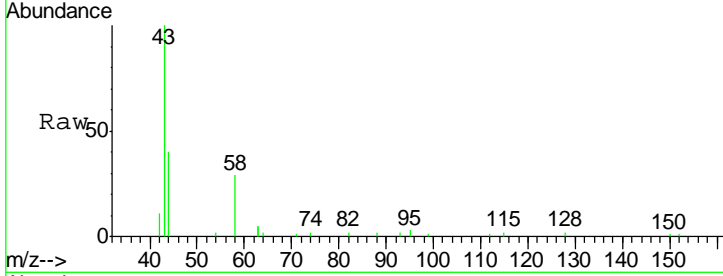
#5
 Phenol-d6
 Concen: 0.002 ng
 RT: 6.93 min Scan# 353
 Delta R.T. 0.01 min
 Lab File: BE101141.D
 Acq: 7 Feb 2020 17:06

Instrument :
 BNA_E
ClientSampled :
 SP5041

Tgt Ion	Resp	Lower	Upper
99	100		
42	363.6	18.3	27.5#
71	0.0	28.0	42.0#

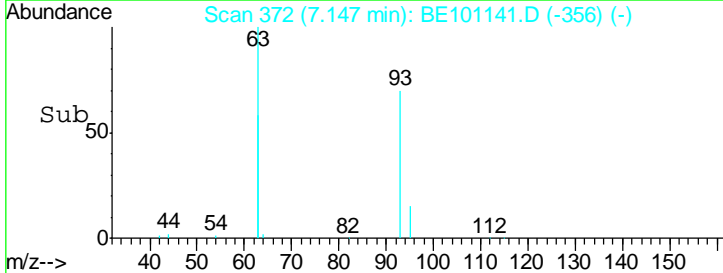
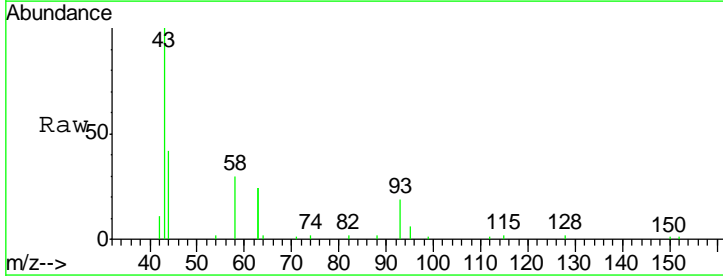
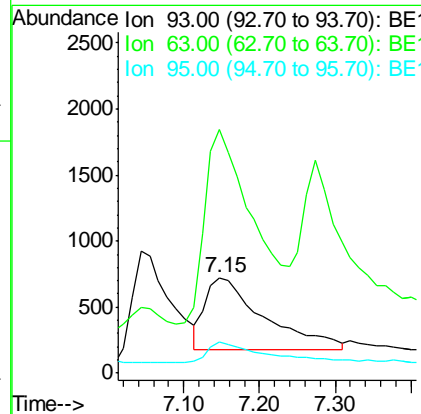
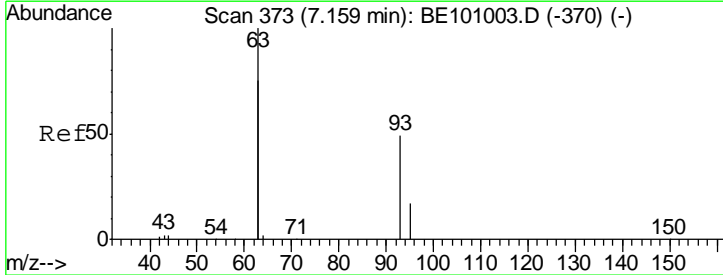
Manual Integrations
APPROVED

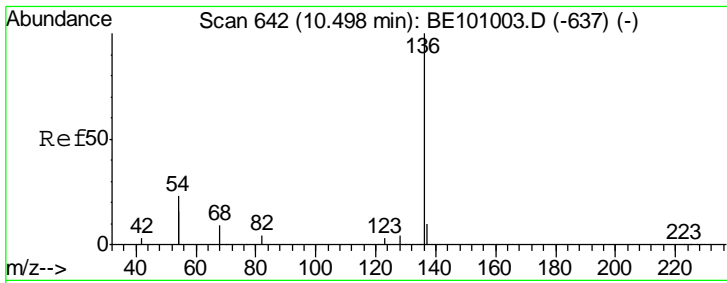
mohammad
 2/11/2020 8:27:10 AM



#6
 bis(2-Chloroethyl)ether
 Concen: 0.442 ng m
 RT: 7.15 min Scan# 372
 Delta R.T. -0.01 min
 Lab File: BE101141.D
 Acq: 7 Feb 2020 17:06

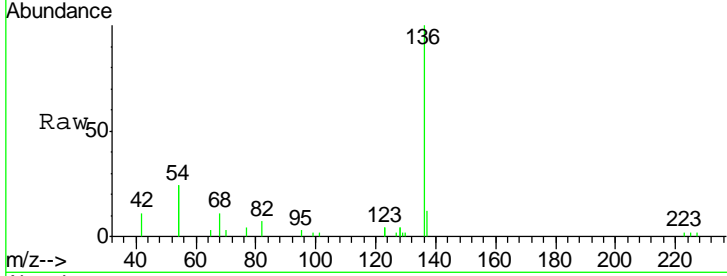
Tgt Ion	Resp	Lower	Upper
93	100		
63	226.7	233.9	350.9#
95	26.0	23.5	35.3





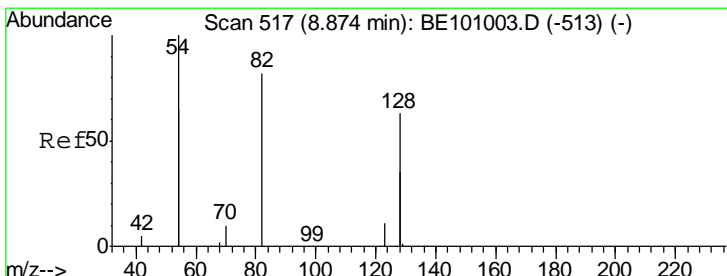
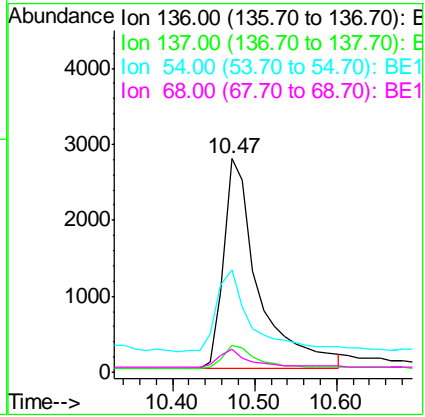
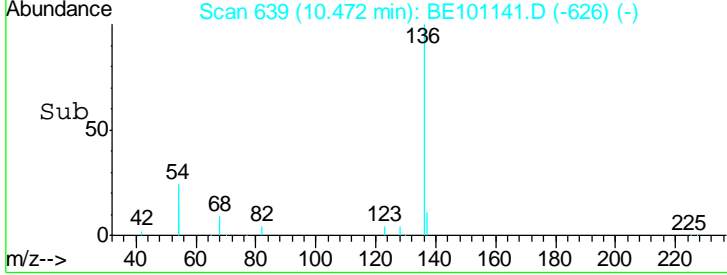
#7
 Naphthalene-d8
 Concen: 0.400 ng
 RT: 10.47 min Scan# 639
 Delta R.T. -0.03 min
 Lab File: BE101141.D
 Acq: 7 Feb 2020 17:06

Instrument :
 BNA_E
ClientSampled :
 SP5041

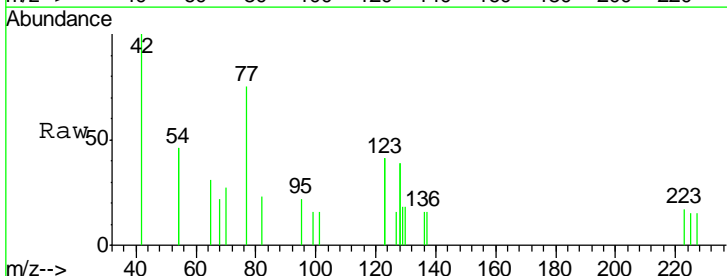


Tgt Ion	Resp	Lower	Upper
136	100		
137	12.4	9.3	13.9
54	47.8	36.8	55.2
68	10.8	8.4	12.6

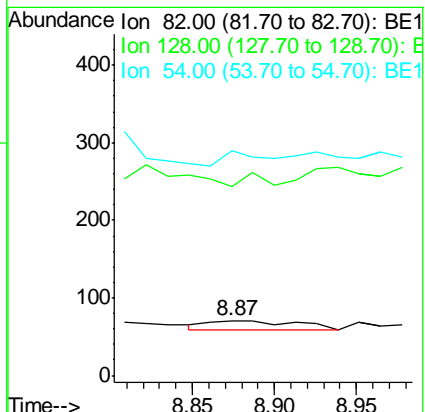
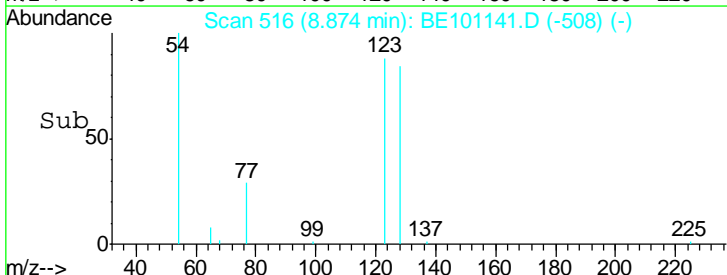
Manual Integrations
APPROVED
 mohammad
 2/11/2020 8:27:10 AM

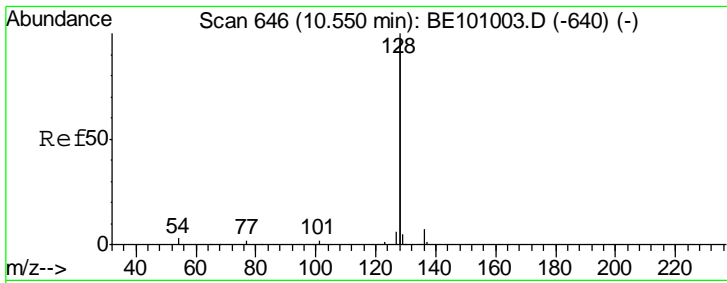


#8
 Nitrobenzene-d5
 Concen: 0.008 ng
 RT: 8.87 min Scan# 516
 Delta R.T. -0.00 min
 Lab File: BE101141.D
 Acq: 7 Feb 2020 17:06



Tgt Ion	Resp	Lower	Upper
82	100		
128	343.7	109.8	164.6#
54	408.5	174.5	261.7#





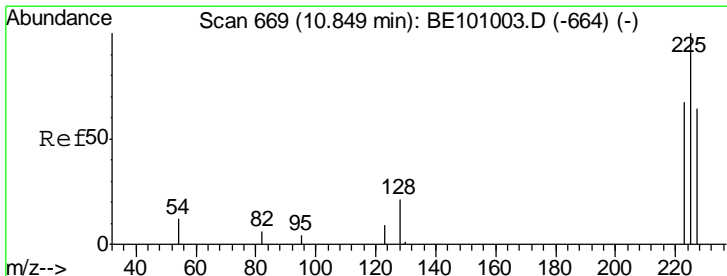
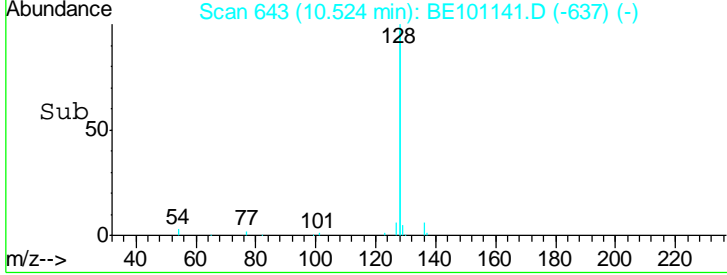
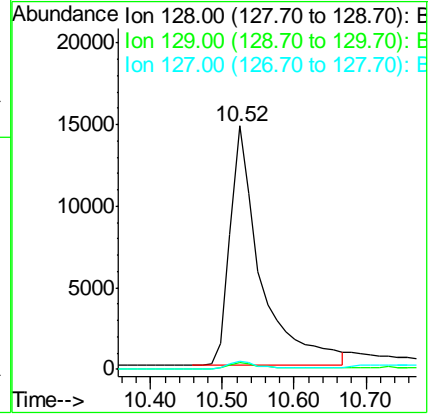
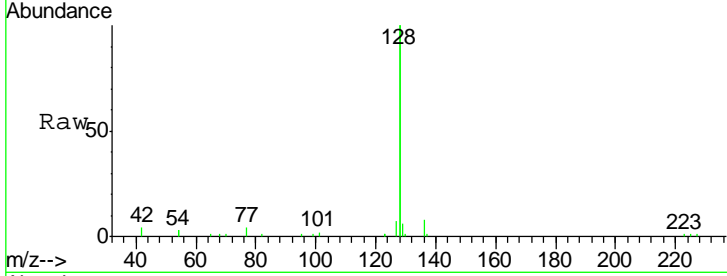
#9
 Naphthalene
 Concen: 0.474 ng
 RT: 10.52 min Scan# 643
 Delta R.T. -0.03 min
 Lab File: BE101141.D
 Acq: 7 Feb 2020 17:06

Instrument :
 BNA_E
ClientSampled :
 SP5041

Tgt Ion	Ratio	Lower	Upper
128	100		
129	3.0	2.3	3.5
127	3.5	2.7	4.1

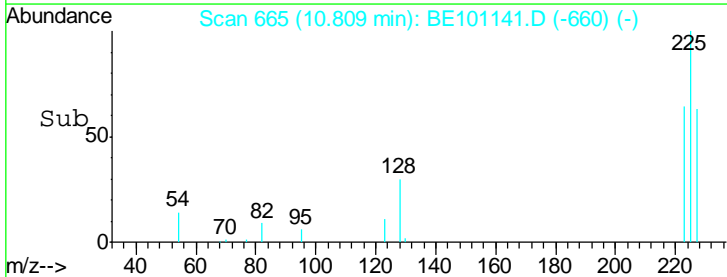
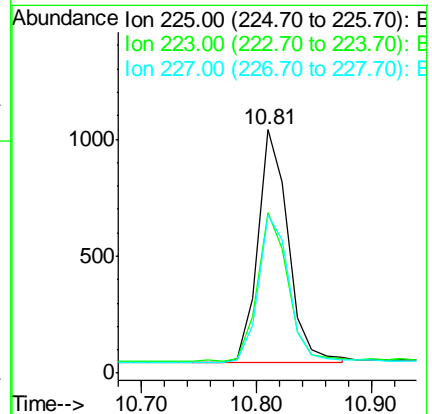
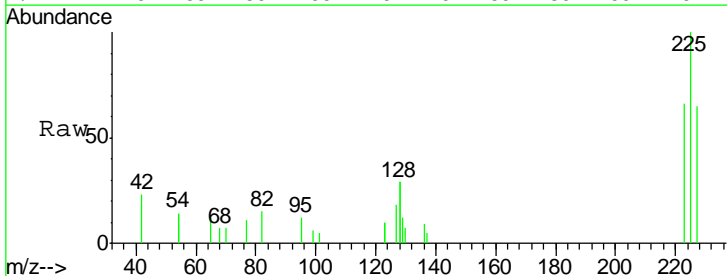
Manual Integrations
APPROVED

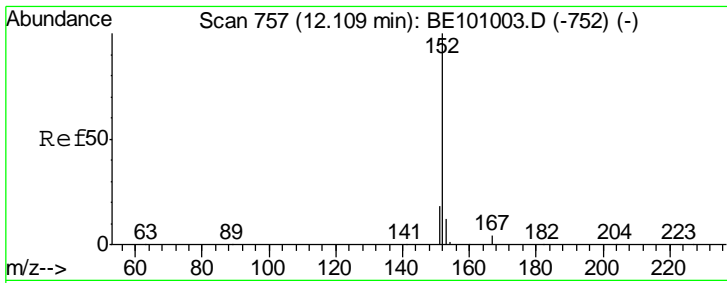
mohammad
 2/11/2020 8:27:10 AM



#10
 Hexachlorobutadiene
 Concen: 0.474 ng
 RT: 10.81 min Scan# 665
 Delta R.T. -0.04 min
 Lab File: BE101141.D
 Acq: 7 Feb 2020 17:06

Tgt Ion	Ratio	Lower	Upper
225	100		
223	63.8	52.2	78.4
227	64.1	49.9	74.9





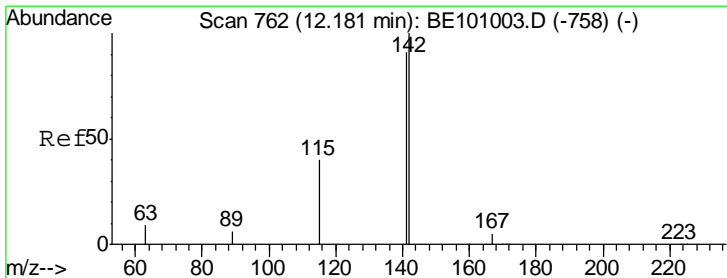
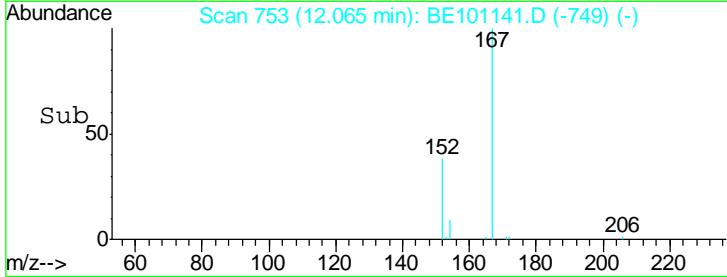
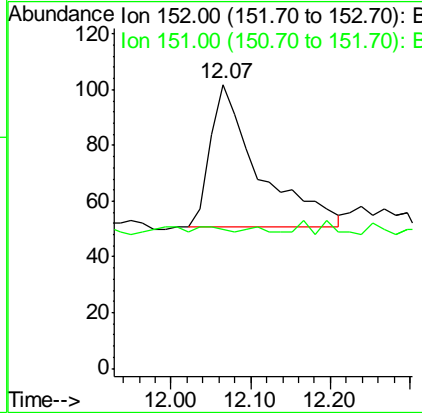
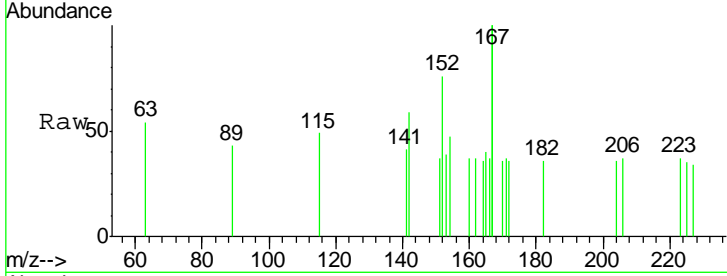
#11
 2-Methylnaphthalene-d10
 Concen: 0.013 ng
 RT: 12.07 min Scan# 753
 Delta R.T. -0.04 min
 Lab File: BE101141.D
 Acq: 7 Feb 2020 17:06

Instrument :
 BNA_E
 ClientSampled :
 SP5041

Tgt Ion	Resp	Lower	Upper
152	100		
151	0.0	15.0	22.6#

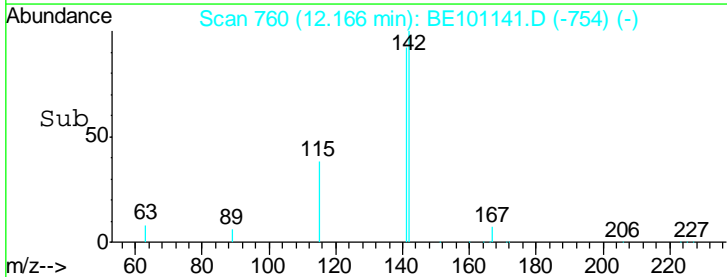
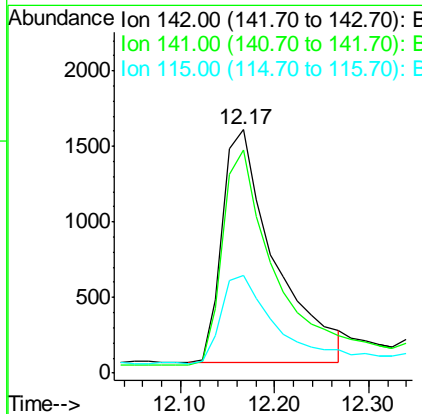
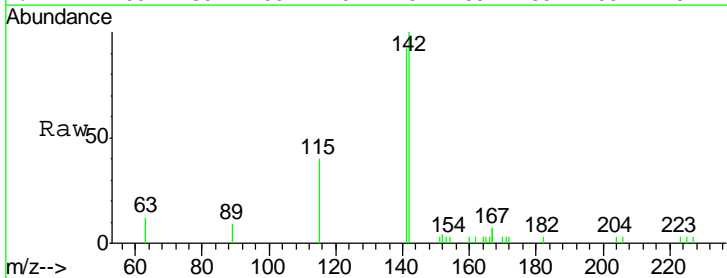
Manual Integrations
 APPROVED

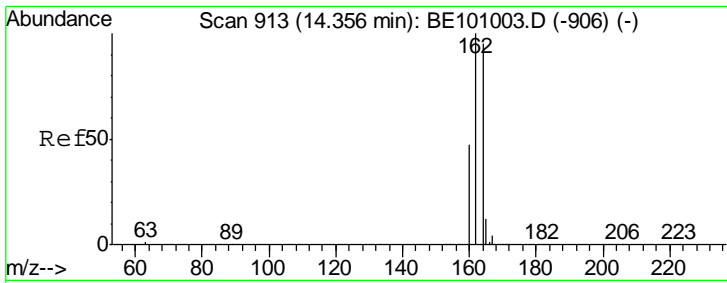
mohammad
 2/11/2020 8:27:10 AM



#12
 2-Methylnaphthalene
 Concen: 0.432 ng
 RT: 12.17 min Scan# 760
 Delta R.T. -0.01 min
 Lab File: BE101141.D
 Acq: 7 Feb 2020 17:06

Tgt Ion	Resp	Lower	Upper
142	100		
141	91.6	72.5	108.7
115	40.2	33.0	49.6





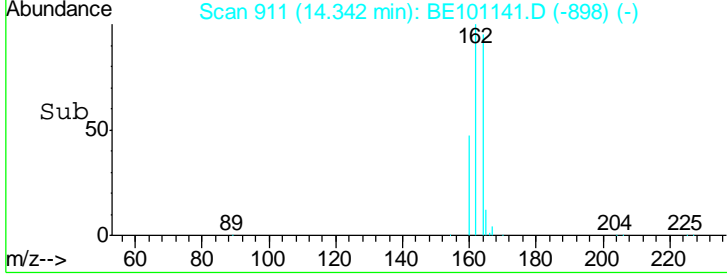
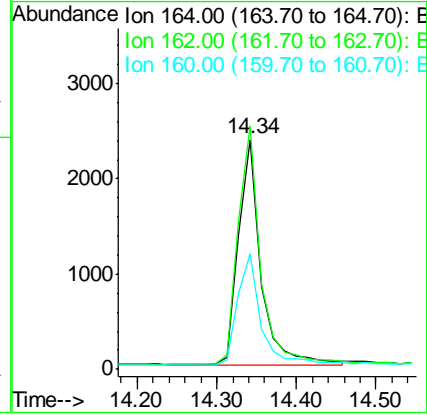
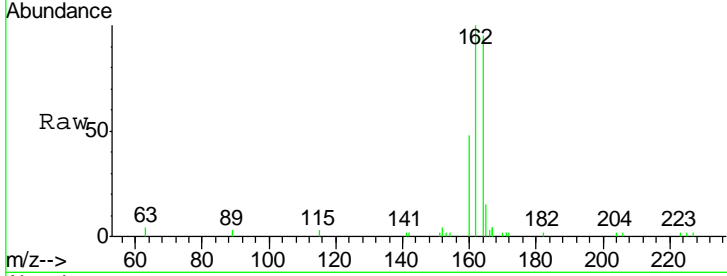
#13
 Acenaphthene-d10
 Concen: 0.400 ng
 RT: 14.34 min Scan# 911
 Delta R.T. -0.01 min
 Lab File: BE101141.D
 Acq: 7 Feb 2020 17:06

Instrument :
 BNA_E
ClientSampled :
 SP5041

Tgt Ion	Resp	Lower	Upper
164	100		
162	105.8	84.1	126.1
160	50.5	40.4	60.6

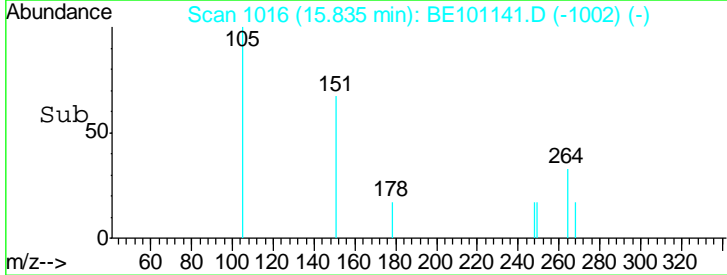
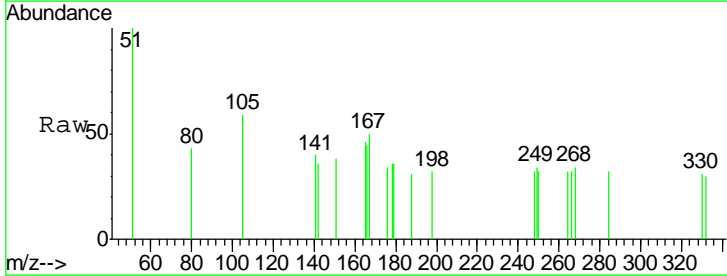
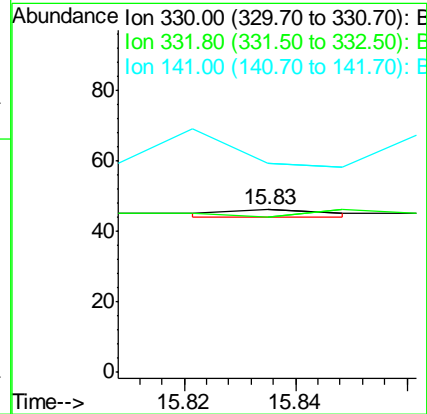
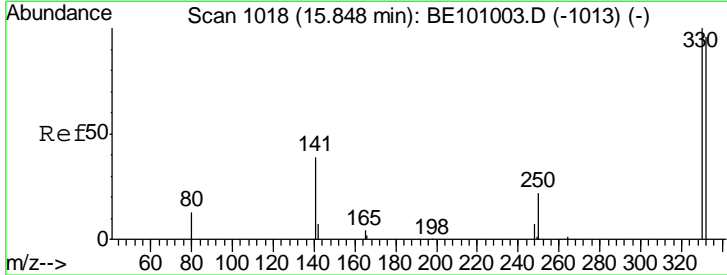
Manual Integrations
APPROVED

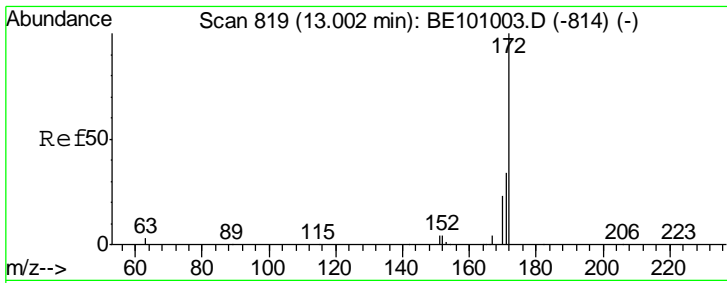
mohammad
 2/11/2020 8:27:10 AM



#14
 2,4,6-Tribromophenol
 Concen: 0.002 ng
 RT: 15.83 min Scan# 1016
 Delta R.T. -0.01 min
 Lab File: BE101141.D
 Acq: 7 Feb 2020 17:06

Tgt Ion	Resp	Lower	Upper
330	100		
332	0.0	78.4	117.6#
141	500.0	37.0	55.4#





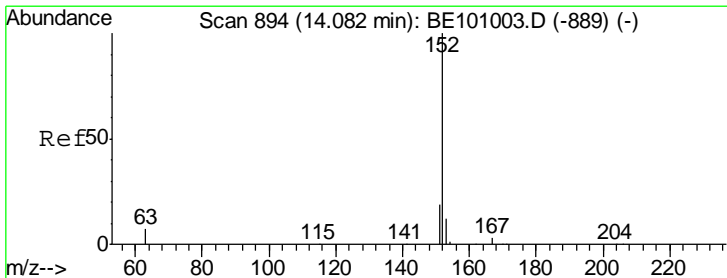
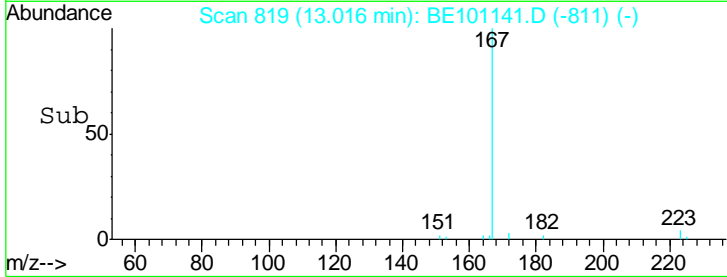
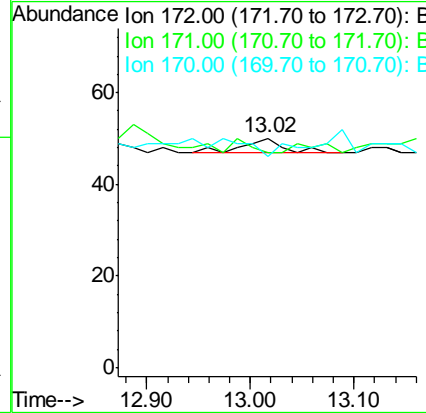
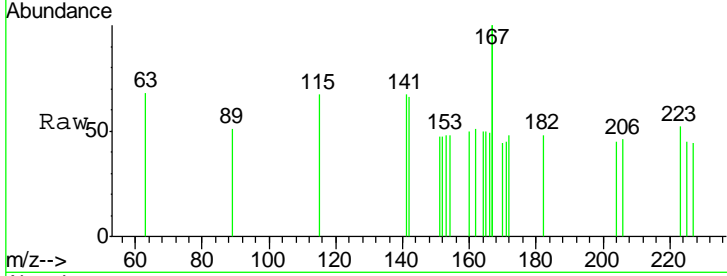
#15
 2-Fluorobiphenyl
 Concen: 0.000 ng
 RT: 13.02 min Scan# 819
 Delta R.T. 0.01 min
 Lab File: BE101141.D
 Acq: 7 Feb 2020 17:06

Instrument :
 BNA_E
 ClientSampled :
 SP5041

Tgt Ion	Ratio	Lower	Upper
172	100		
171	94.0	28.2	42.2#
170	92.0	18.9	28.3#

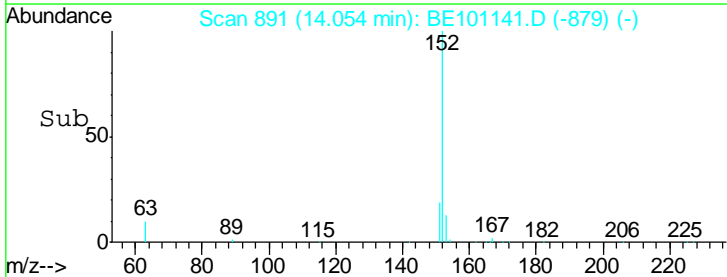
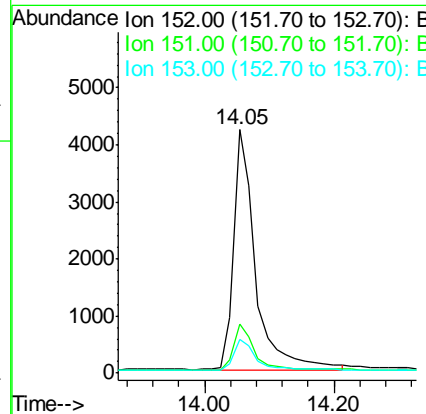
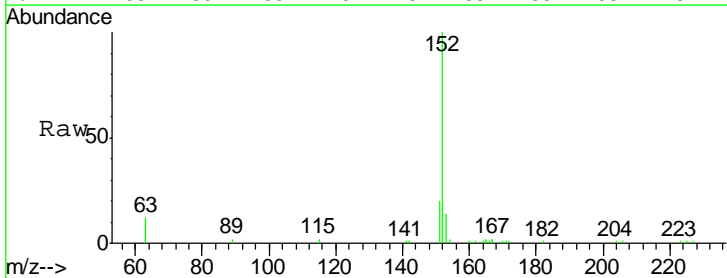
Manual Integrations
 APPROVED

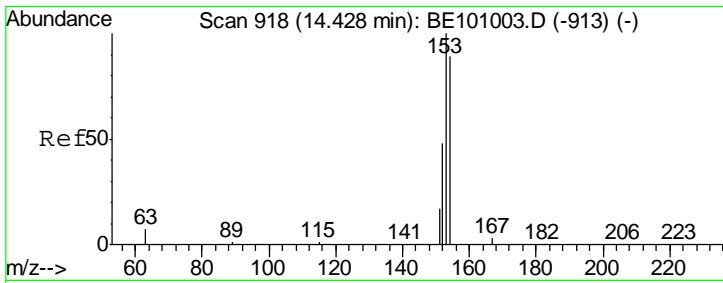
mohammad
 2/11/2020 8:27:10 AM



#16
 Acenaphthylene
 Concen: 0.522 ng
 RT: 14.05 min Scan# 891
 Delta R.T. -0.03 min
 Lab File: BE101141.D
 Acq: 7 Feb 2020 17:06

Tgt Ion	Ratio	Lower	Upper
152	100		
151	18.8	15.5	23.3
153	13.0	10.4	15.6





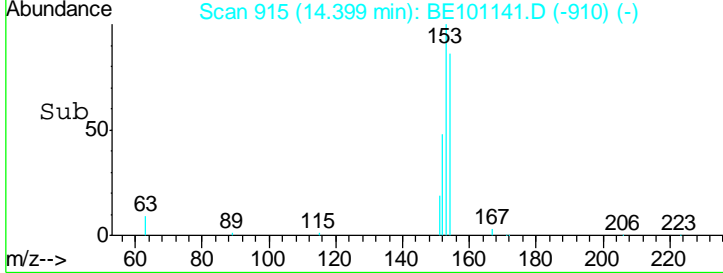
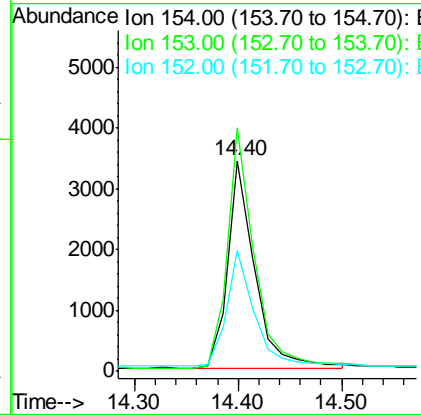
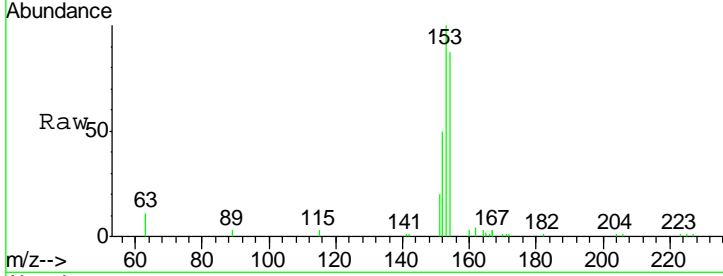
#17
 Acenaphthene
 Concen: 0.461 ng
 RT: 14.40 min Scan# 915
 Delta R.T. -0.03 min
 Lab File: BE101141.D
 Acq: 7 Feb 2020 17:06

Instrument :
 BNA_E
 ClientSampled :
 SP5041

Tgt Ion	Resp	Lower	Upper
154	100		
153	116.4	93.6	140.4
152	57.4	46.3	69.5

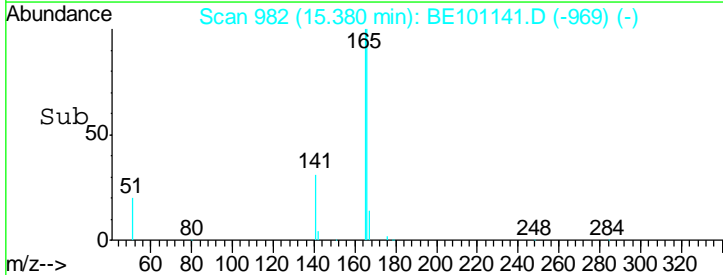
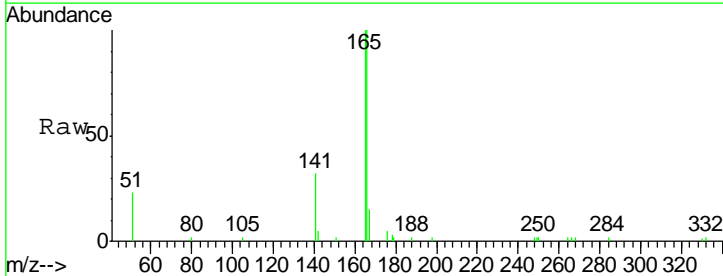
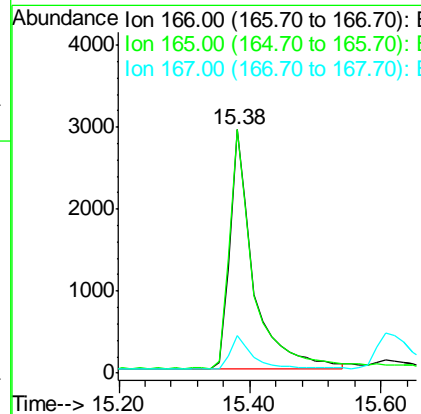
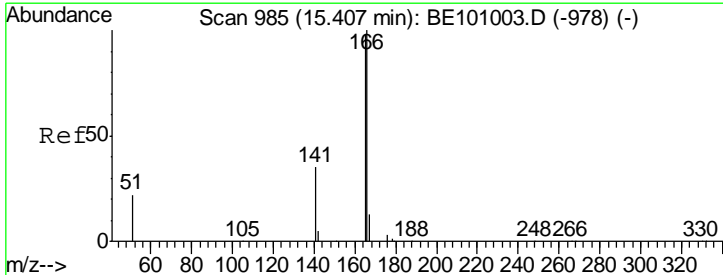
Manual Integrations
 APPROVED

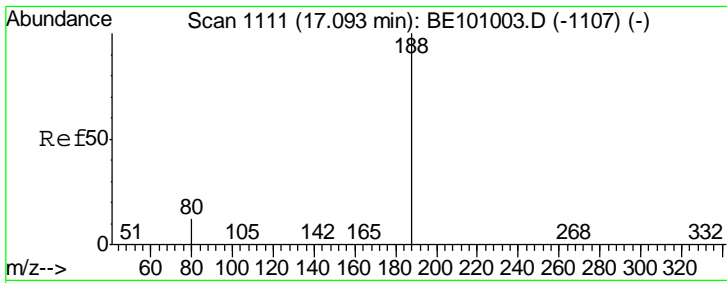
mohammad
 2/11/2020 8:27:10 AM



#18
 Fluorene
 Concen: 0.439 ng
 RT: 15.38 min Scan# 982
 Delta R.T. -0.03 min
 Lab File: BE101141.D
 Acq: 7 Feb 2020 17:06

Tgt Ion	Resp	Lower	Upper
166	100		
165	100.0	79.8	119.8
167	13.6	11.0	16.6





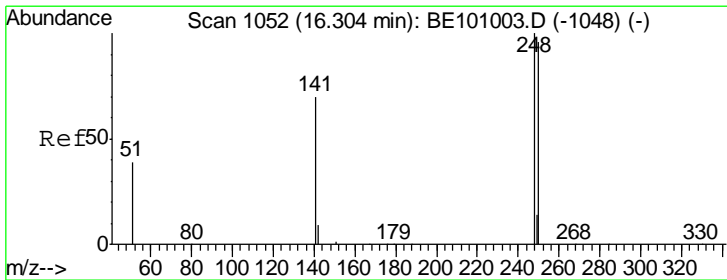
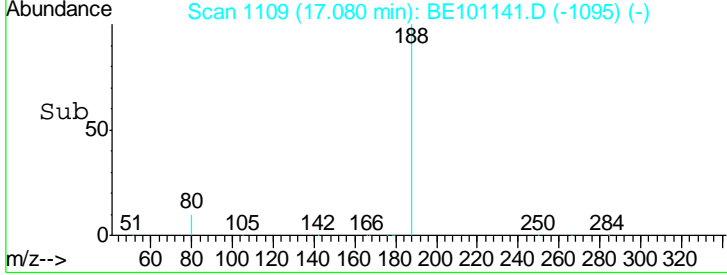
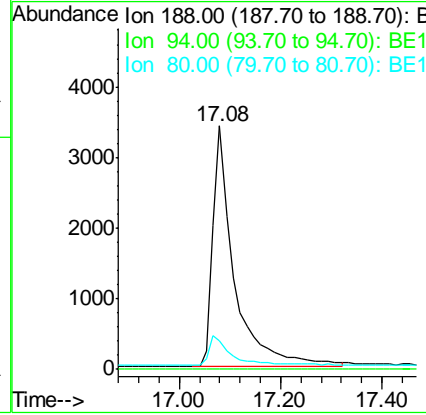
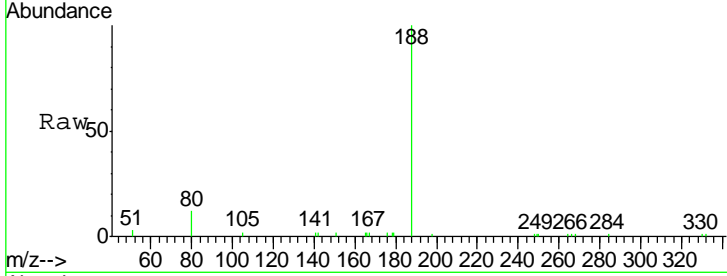
#19
 Phenanthrene-d10
 Concen: 0.400 ng
 RT: 17.08 min Scan# 1109
 Delta R.T. -0.01 min
 Lab File: BE101141.D
 Acq: 7 Feb 2020 17:06

Instrument :
 BNA_E
ClientSampled :
 SP5041

Tgt Ion	Resp	Lower	Upper
188	100		
94	0.0	0.0	0.0
80	11.9	10.8	16.2

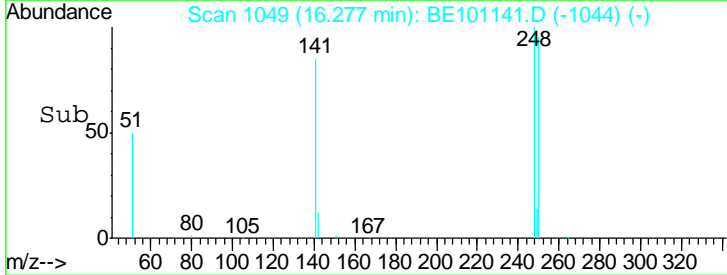
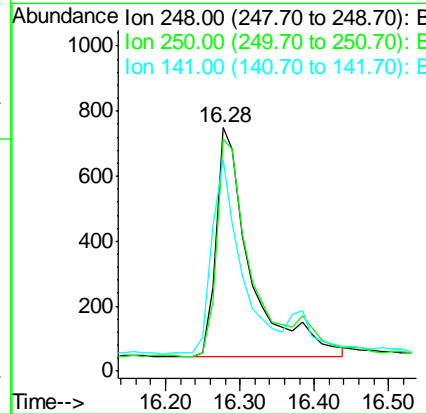
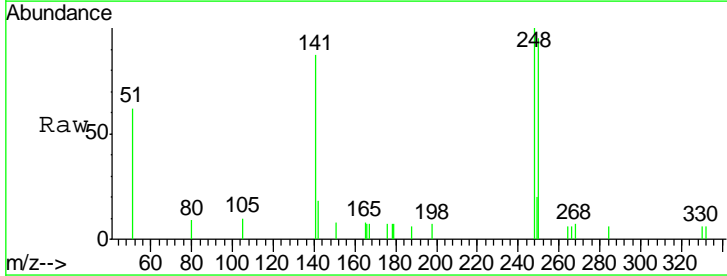
Manual Integrations
APPROVED

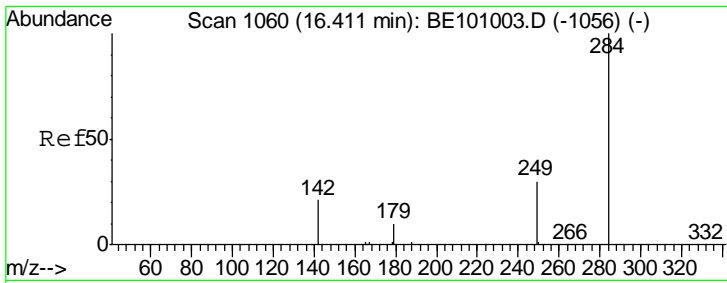
mohammad
 2/11/2020 8:27:10 AM



#20
 4-Bromophenyl-phenylether
 Concen: 0.475 ng
 RT: 16.28 min Scan# 1049
 Delta R.T. -0.03 min
 Lab File: BE101141.D
 Acq: 7 Feb 2020 17:06

Tgt Ion	Resp	Lower	Upper
248	100		
250	95.5	76.6	115.0
141	87.2	57.7	86.5#





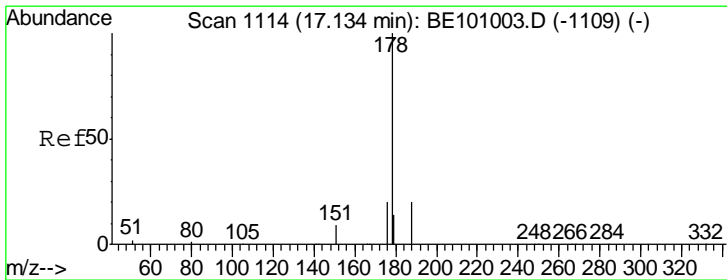
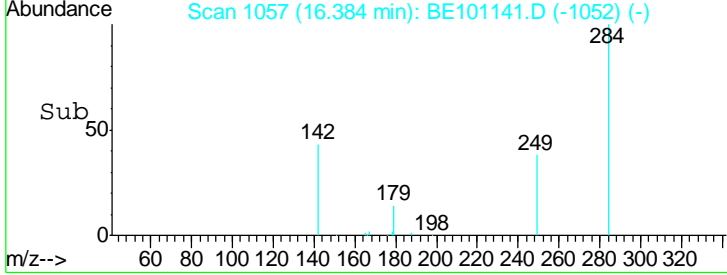
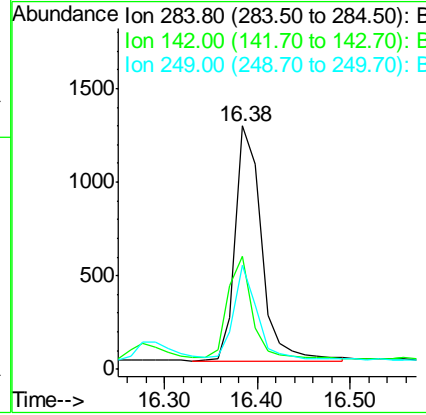
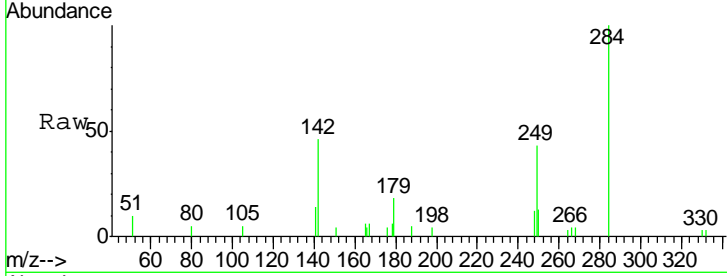
#21
Hexachlorobenzene
Concen: 0.461 ng
RT: 16.38 min Scan# 1057
Delta R.T. -0.03 min
Lab File: BE101141.D
Acq: 7 Feb 2020 17:06

Instrument :
BNA_E
ClientSampled :
SP5041

Tgt Ion	Resp	Lower	Upper
284	2434		
142	41.2	34.0	51.0
249	34.8	28.2	42.4

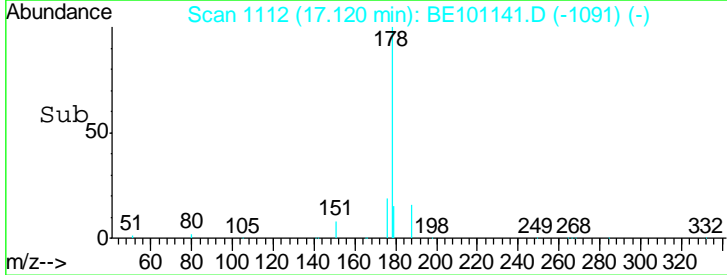
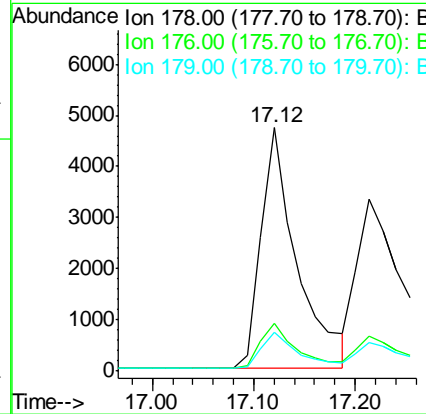
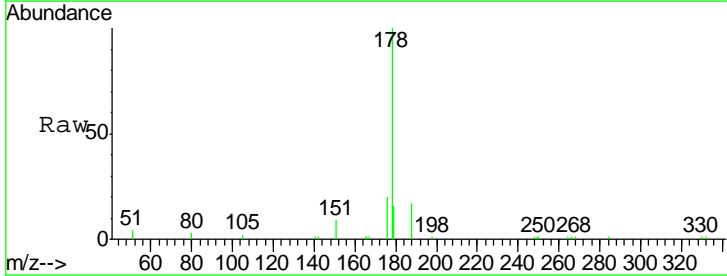
Manual Integrations
APPROVED

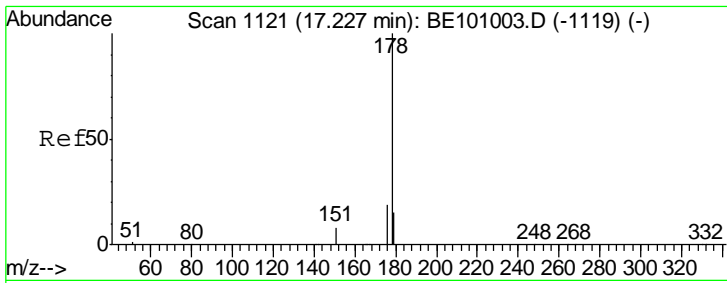
mohammad
2/11/2020 8:27:10 AM



#23
Phenanthrene
Concen: 0.430 ng
RT: 17.12 min Scan# 1112
Delta R.T. -0.01 min
Lab File: BE101141.D
Acq: 7 Feb 2020 17:06

Tgt Ion	Resp	Lower	Upper
178	11610		
176	19.4	15.7	23.5
179	15.6	12.0	18.0





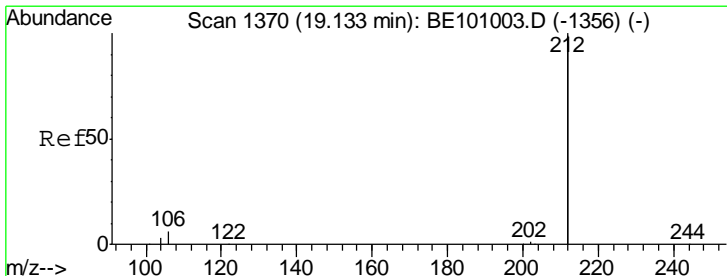
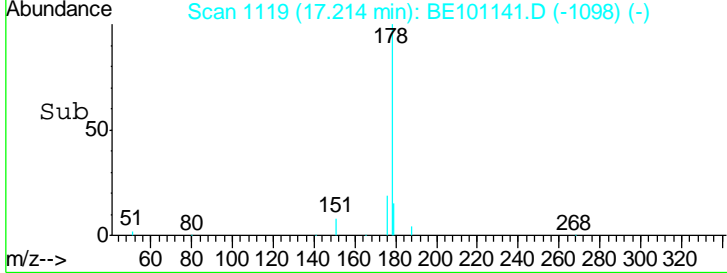
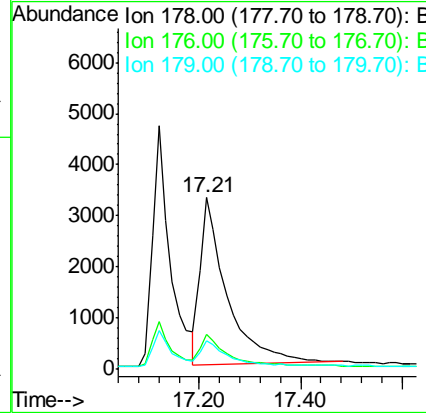
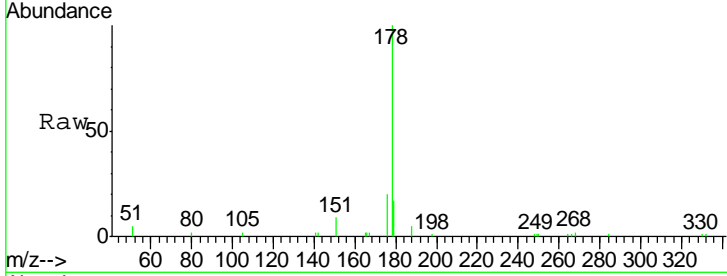
#24
 Anthracene
 Concen: 0.472 ng
 RT: 17.21 min Scan# 1119
 Delta R.T. -0.01 min
 Lab File: BE101141.D
 Acq: 7 Feb 2020 17:06

Instrument :
 BNA_E
 ClientSampled :
 SP5041

Tgt Ion	Resp	Lower	Upper
178	12021		
176	17.9	14.8	22.2
179	15.8	12.4	18.6

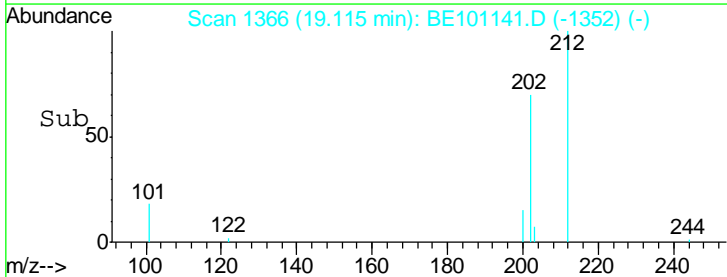
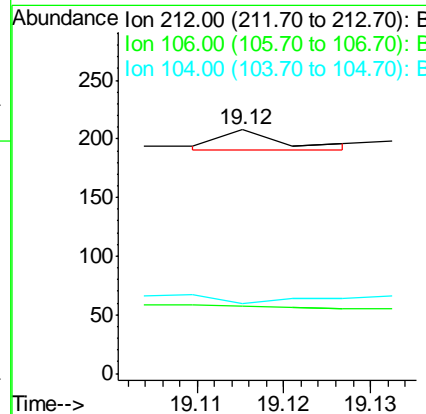
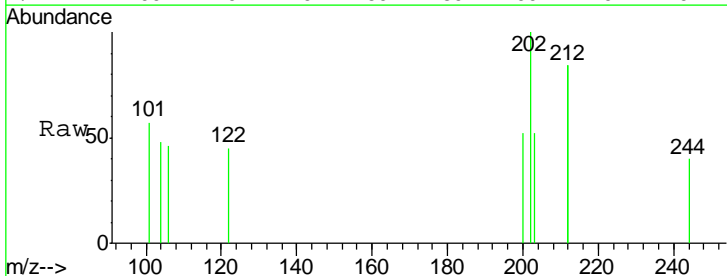
Manual Integrations
 APPROVED

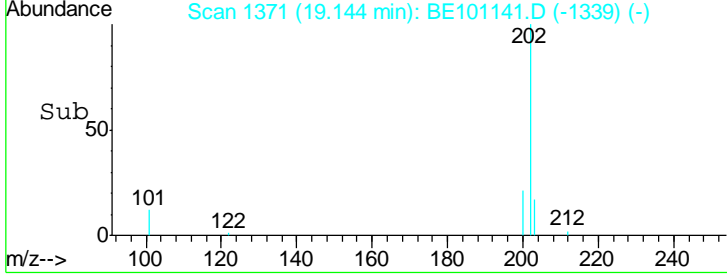
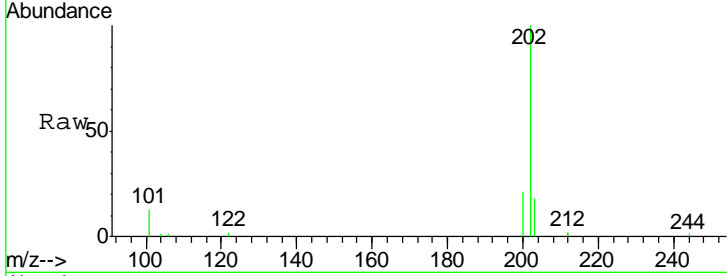
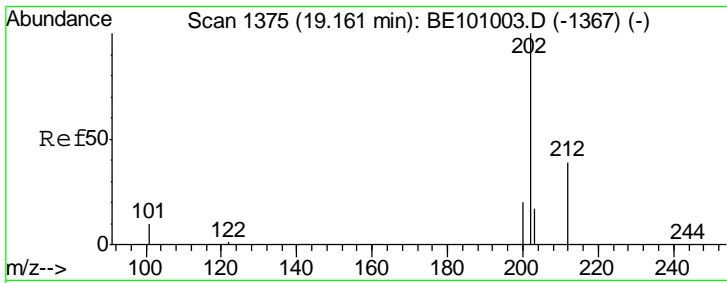
mohammad
 2/11/2020 8:27:10 AM



#25
 Fluoranthene-d10
 Concen: 0.000 ng
 RT: 19.12 min Scan# 1366
 Delta R.T. -0.02 min
 Lab File: BE101141.D
 Acq: 7 Feb 2020 17:06

Tgt Ion	Resp	Lower	Upper
212	9		
106	133.3	2.6	3.8#
104	0.0	1.4	2.0#



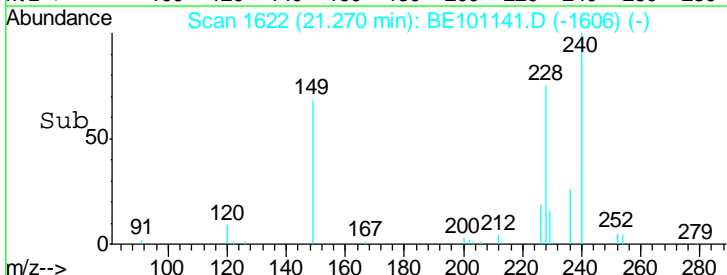
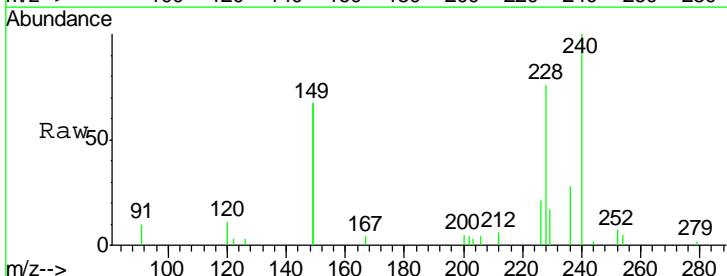
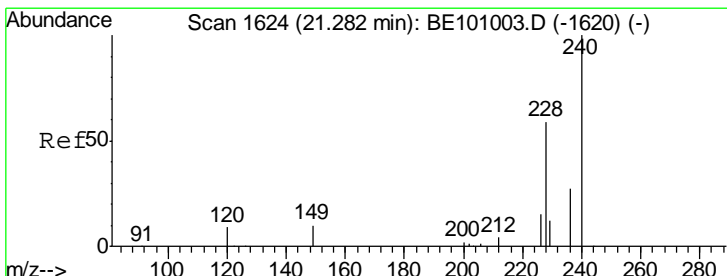
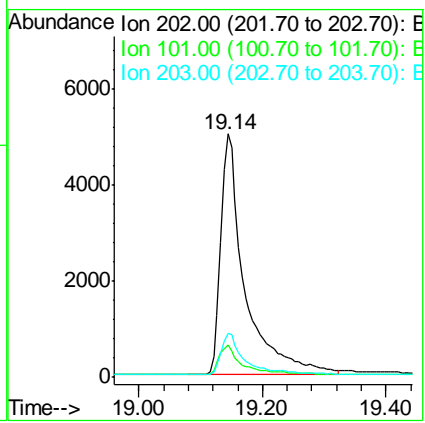


#26
 Fluoranthene
 Concen: 0.402 ng
 RT: 19.14 min Scan# 1371
 Delta R.T. -0.02 min
 Lab File: BE101141.D
 Acq: 7 Feb 2020 17:06

Tgt Ion	Resp	Lower	Upper
202	13571		
202	100		
101	12.1	9.6	14.4
203	16.6	13.8	20.6

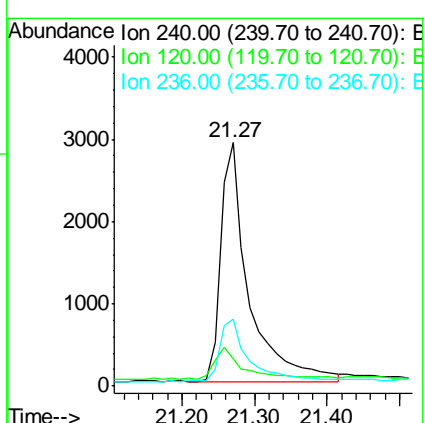
Instrument :
 BNA_E
 ClientSampled :
 SP5041

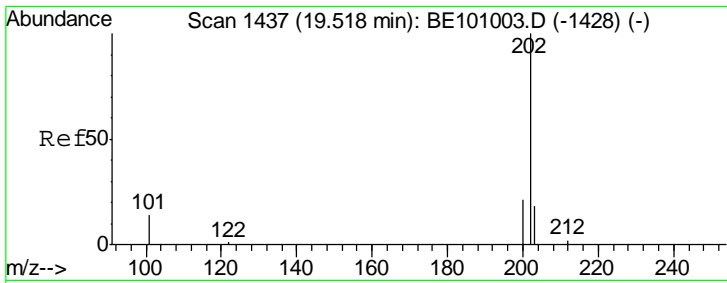
Manual Integrations
APPROVED
 mohammad
 2/11/2020 8:27:10 AM



#27
 Chrysene-d12
 Concen: 0.400 ng
 RT: 21.27 min Scan# 1622
 Delta R.T. -0.01 min
 Lab File: BE101141.D
 Acq: 7 Feb 2020 17:06

Tgt Ion	Resp	Lower	Upper
240	7832		
240	100		
120	11.3	8.6	13.0
236	27.6	22.2	33.4



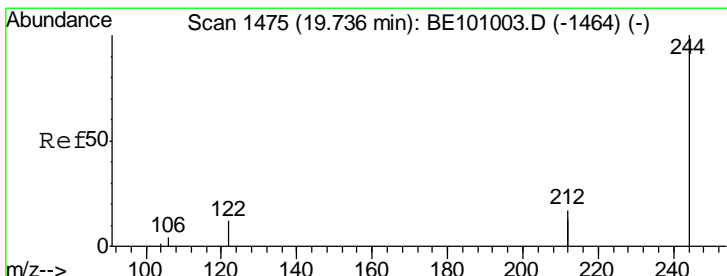
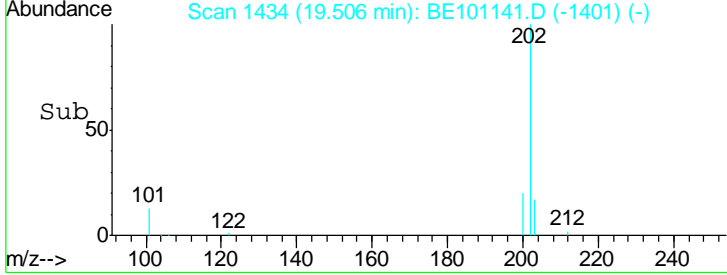
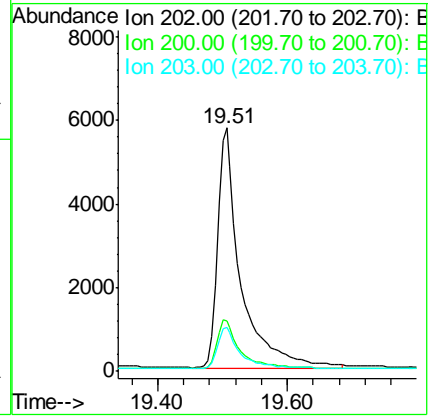
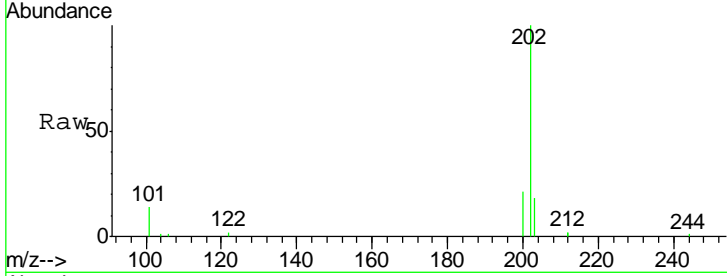


#28
 Pyrene
 Concen: 0.491 ng
 RT: 19.51 min Scan# 1434
 Delta R.T. -0.01 min
 Lab File: BE101141.D
 Acq: 7 Feb 2020 17:06

Instrument :
 BNA_E
ClientSampled :
 SP5041

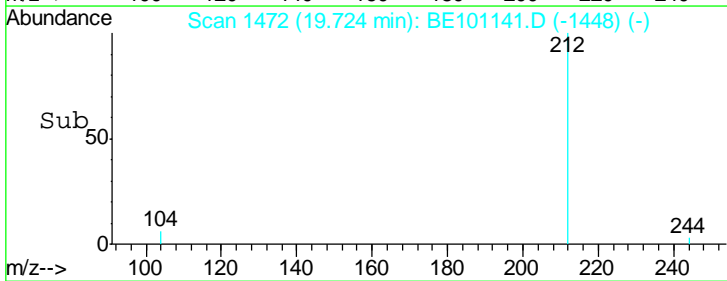
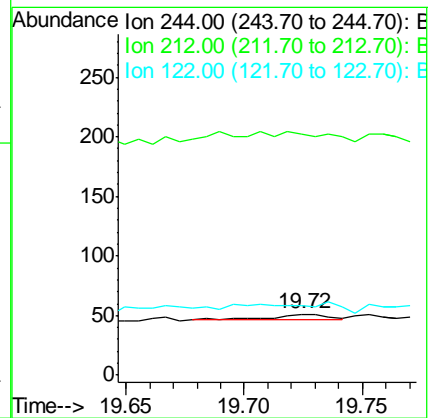
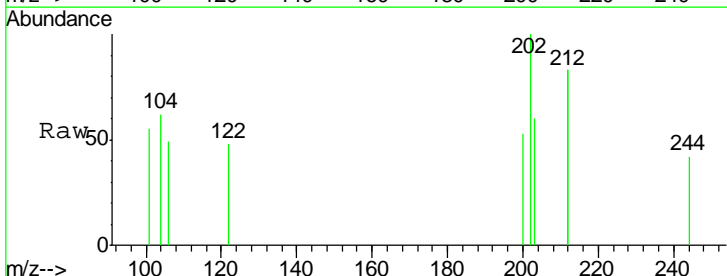
Tgt Ion	Resp	Lower	Upper
202	14315		
202	100		
200	21.3	17.0	25.4
203	17.1	13.8	20.6

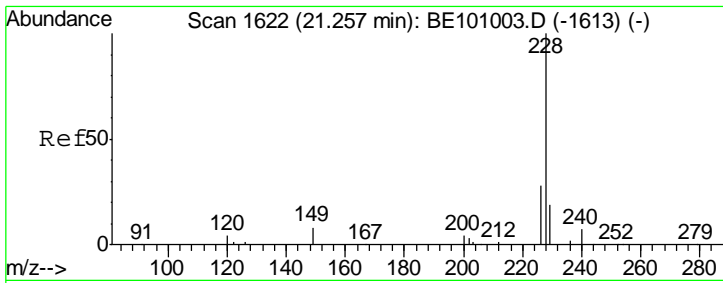
Manual Integrations
APPROVED
 mohammad
 2/11/2020 8:27:10 AM



#29
 Terphenyl-d14
 Concen: 0.000 ng
 RT: 19.72 min Scan# 1472
 Delta R.T. -0.01 min
 Lab File: BE101141.D
 Acq: 7 Feb 2020 17:06

Tgt Ion	Resp	Lower	Upper
244	7		
244	100		
212	396.1	27.2	40.8#
122	113.7	9.8	14.8#





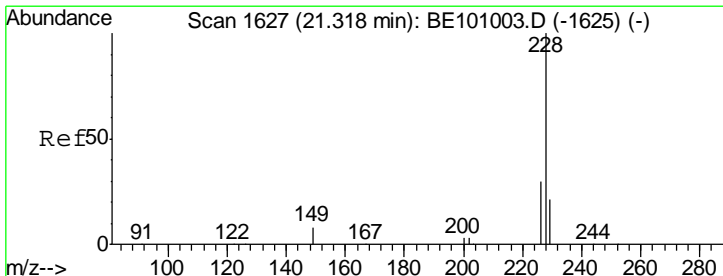
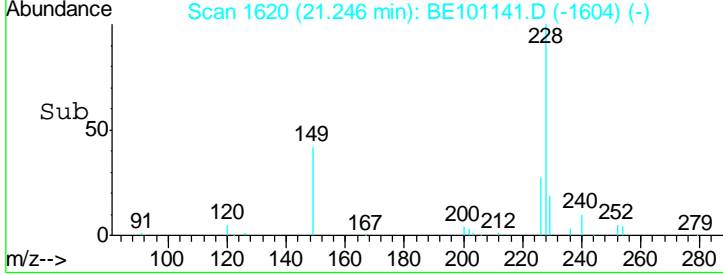
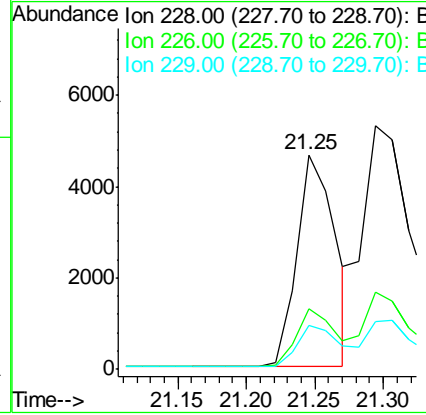
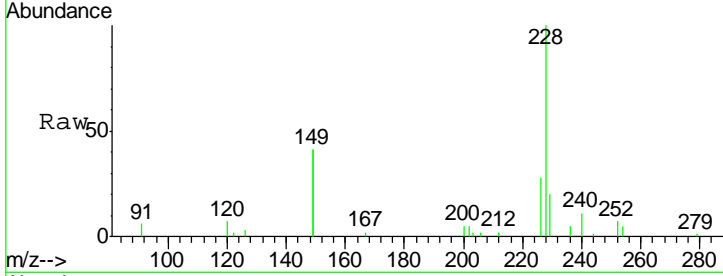
#30
 Benzo(a)anthracene
 Concen: 0.404 ng
 RT: 21.25 min Scan# 1620
 Delta R.T. -0.01 min
 Lab File: BE101141.D
 Acq: 7 Feb 2020 17:06

Instrument :
 BNA_E
 ClientSampled :
 SP5041

Tgt Ion	Resp	Lower	Upper
228	100		
226	28.4	22.7	34.1
229	20.3	15.5	23.3

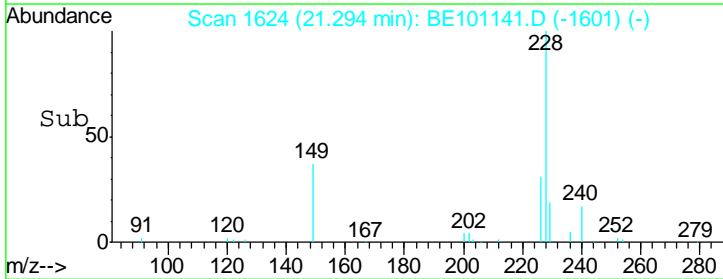
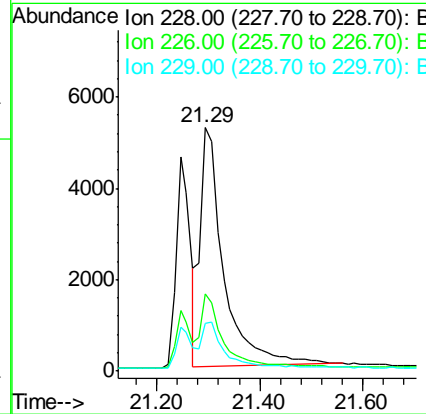
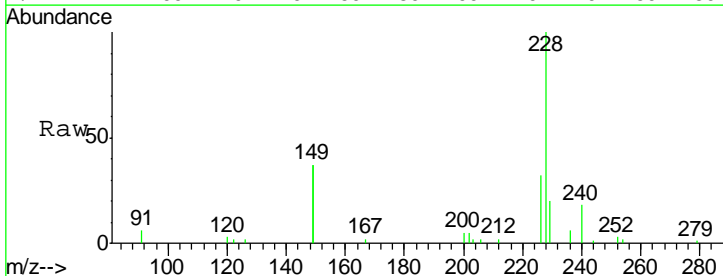
Manual Integrations
 APPROVED

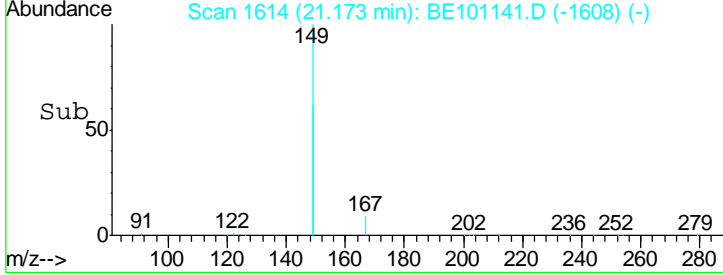
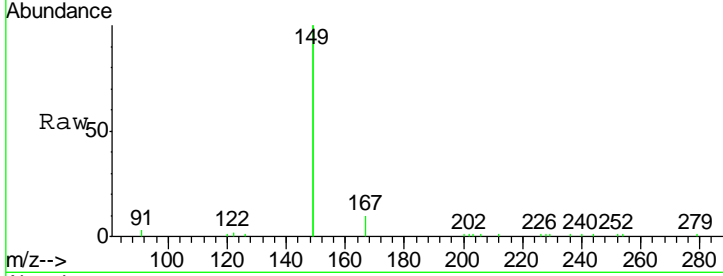
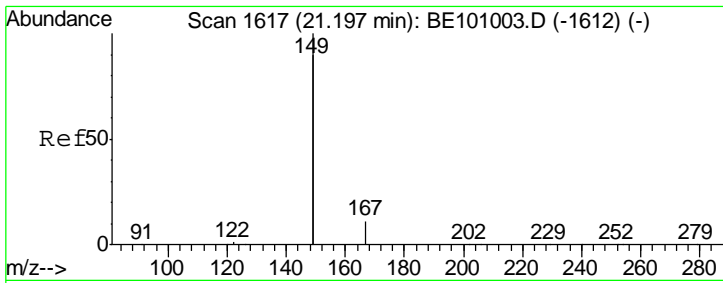
mohammad
 2/11/2020 8:27:10 AM



#31
 Chrysene
 Concen: 0.499 ng
 RT: 21.29 min Scan# 1624
 Delta R.T. -0.02 min
 Lab File: BE101141.D
 Acq: 7 Feb 2020 17:06

Tgt Ion	Resp	Lower	Upper
228	100		
226	31.6	23.5	35.3
229	19.7	16.7	25.1



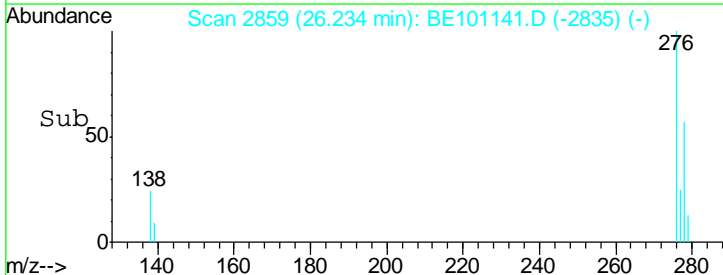
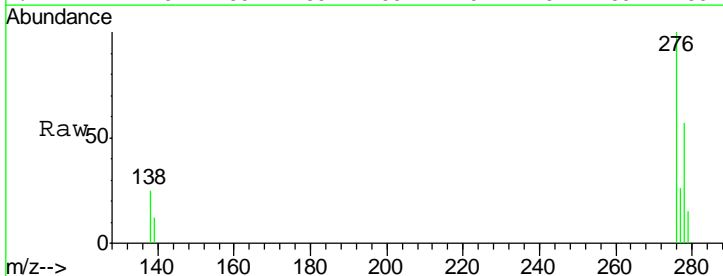
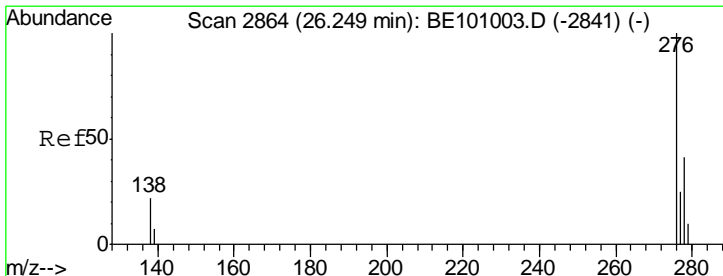
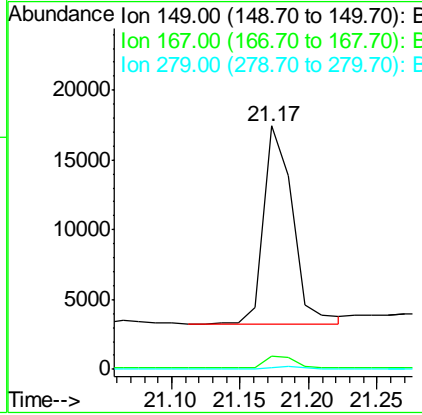


#32
 Bis(2-ethylhexyl)phthalate
 Concen: 0.562 ng
 RT: 21.17 min Scan# 1614
 Delta R.T. -0.02 min
 Lab File: BE101141.D
 Acq: 7 Feb 2020 17:06

Tgt Ion	Ratio	Lower	Upper
149	100		
167	6.1	5.2	7.8
279	0.8	0.8	1.2

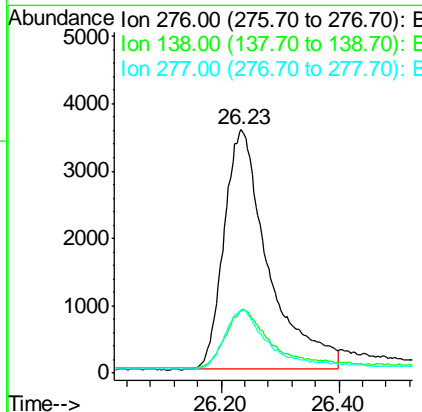
Instrument : BNA_E
 Client Sampled : SP5041

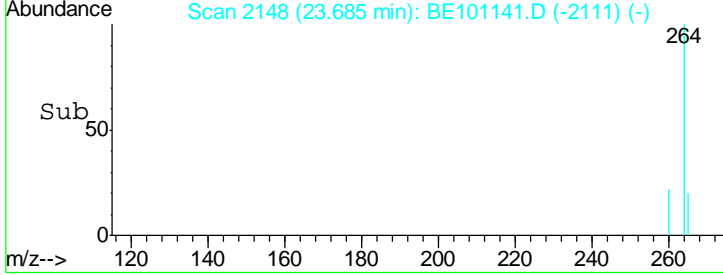
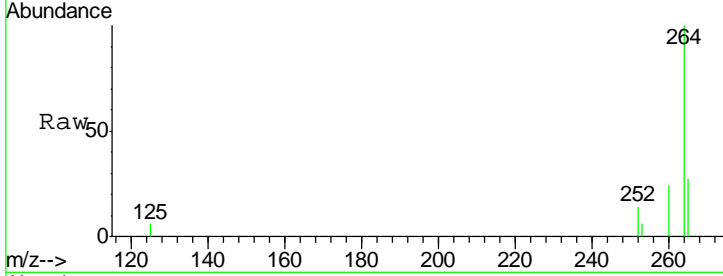
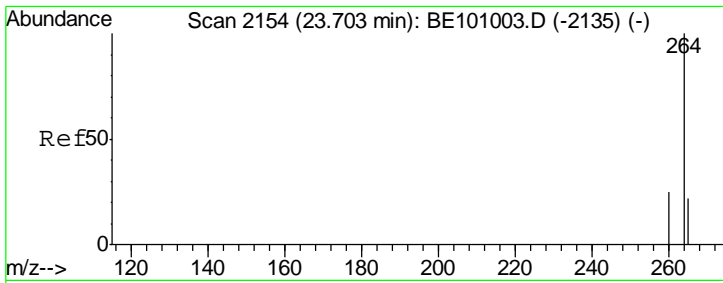
Manual Integrations APPROVED
 mohammad
 2/11/2020 8:27:10 AM



#33
 Indeno(1,2,3-cd)pyrene
 Concen: 0.710 ng
 RT: 26.23 min Scan# 2859
 Delta R.T. -0.01 min
 Lab File: BE101141.D
 Acq: 7 Feb 2020 17:06

Tgt Ion	Ratio	Lower	Upper
276	100		
138	23.1	16.1	24.1
277	23.1	18.1	27.1



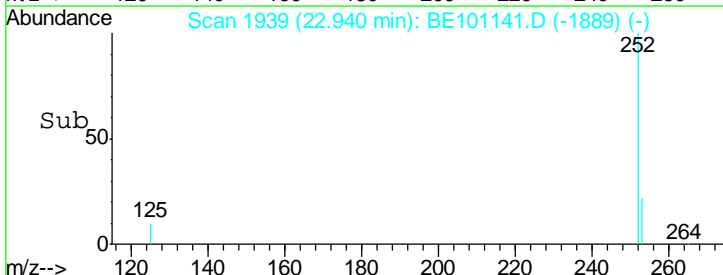
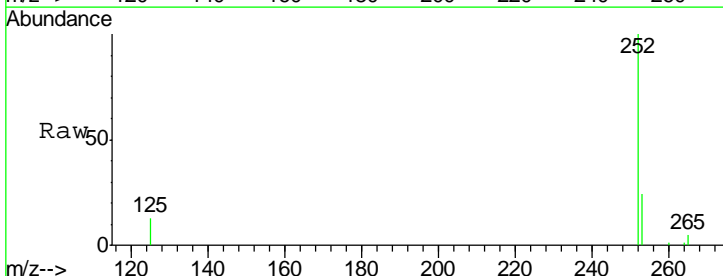
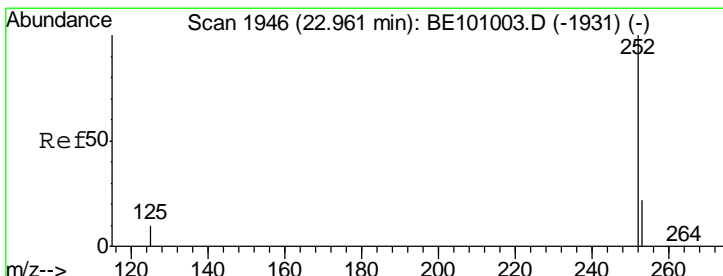
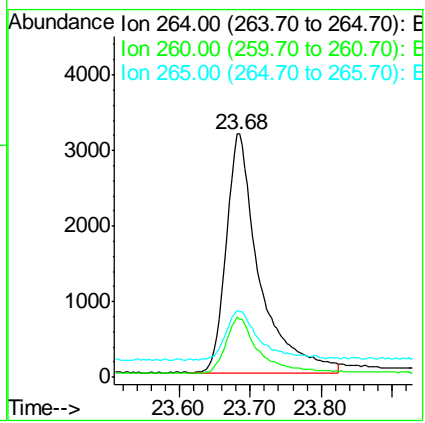


#34
 Perylene-d12
 Concen: 0.400 ng
 RT: 23.68 min Scan# 2148
 Delta R.T. -0.02 min
 Lab File: BE101141.D
 Acq: 7 Feb 2020 17:06

Tgt Ion	Resp	Lower	Upper
264	10223		
260	23.7	20.3	30.5
265	27.2	27.0	40.4

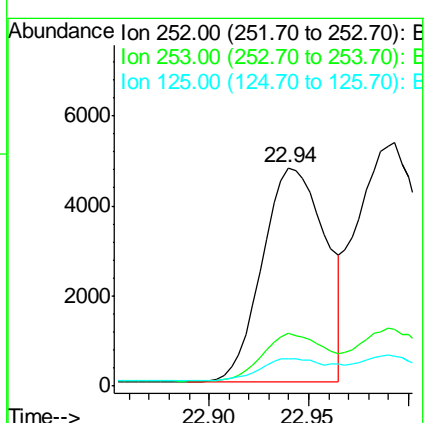
Instrument :
 BNA_E
 ClientSampled :
 SP5041

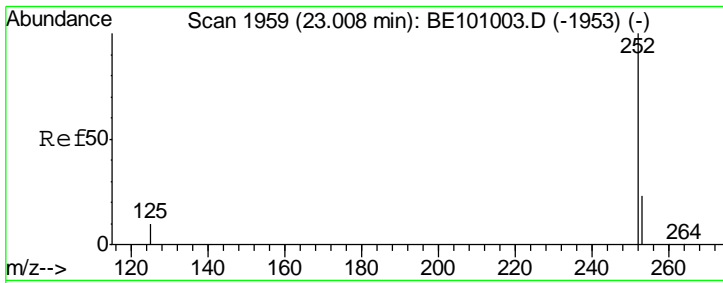
Manual Integrations
 APPROVED
 mohammad
 2/11/2020 8:27:10 AM



#35
 Benzo(b)fluoranthene
 Concen: 0.366 ng
 RT: 22.94 min Scan# 1939
 Delta R.T. -0.02 min
 Lab File: BE101141.D
 Acq: 7 Feb 2020 17:06

Tgt Ion	Resp	Lower	Upper
252	10502		
253	24.2	18.5	27.7
125	12.7	9.5	14.3



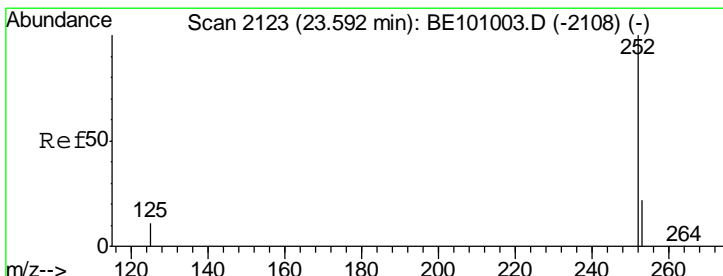
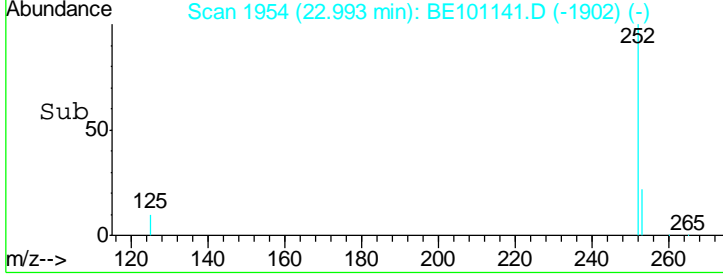
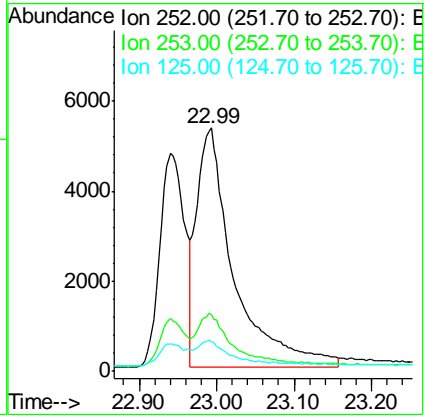
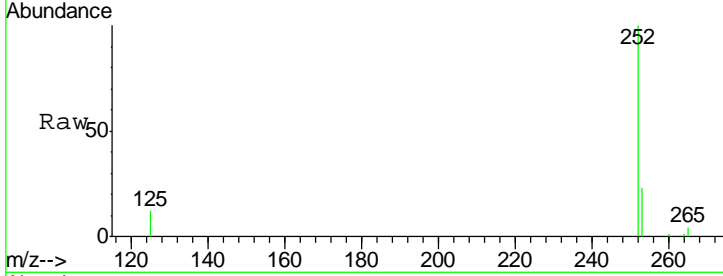


#36
 Benzo(k)fluoranthene
 Concen: 0.432 ng m
 RT: 22.99 min Scan# 1954
 Delta R.T. -0.01 min
 Lab File: BE101141.D
 Acq: 7 Feb 2020 17:06

Instrument :
 BNA_E
 ClientSampled :
 SP5041

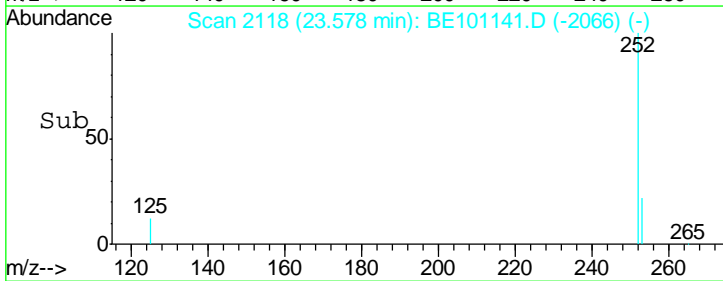
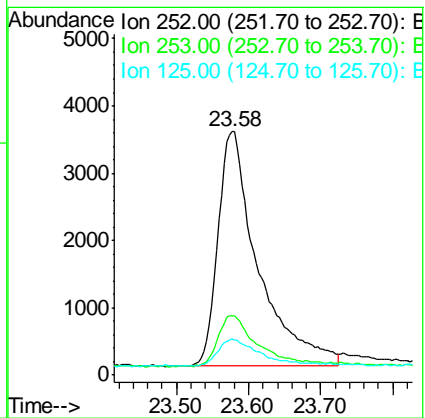
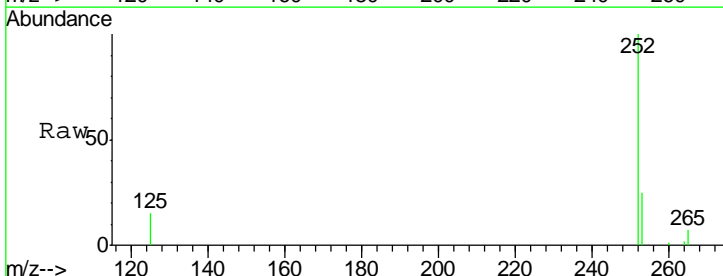
Tgt Ion	Resp	Lower	Upper
252	17931		
253	23.5	18.9	28.3
125	12.0	10.1	15.1

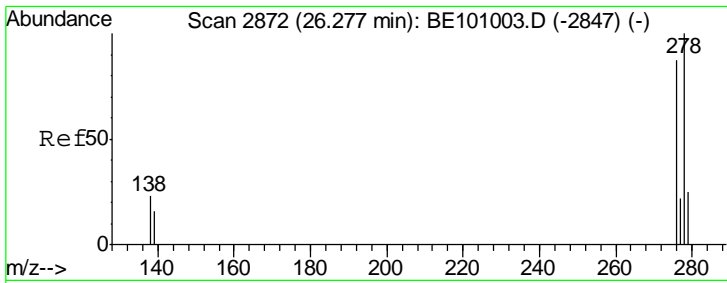
Manual Integrations
APPROVED
 mohammad
 2/11/2020 8:27:10 AM



#37
 Benzo(a)pyrene
 Concen: 0.484 ng
 RT: 23.58 min Scan# 2118
 Delta R.T. -0.01 min
 Lab File: BE101141.D
 Acq: 7 Feb 2020 17:06

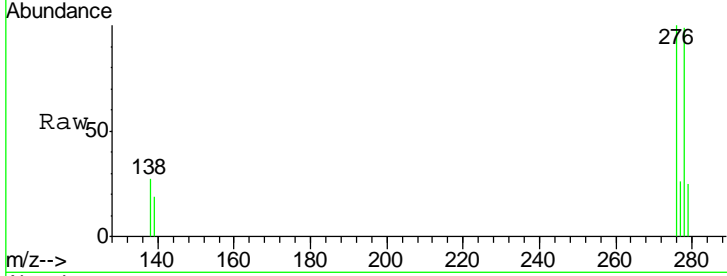
Tgt Ion	Resp	Lower	Upper
252	13416		
253	24.6	19.4	29.2
125	14.9	11.8	17.6





#38
 Dibenzo(a,h)anthracene
 Concen: 0.585 ng
 RT: 26.25 min Scan# 2864
 Delta R.T. -0.03 min
 Lab File: BE101141.D
 Acq: 7 Feb 2020 17:06

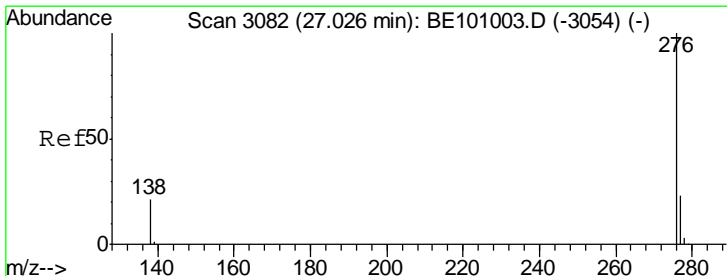
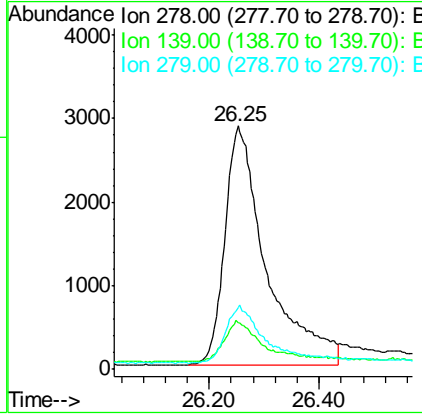
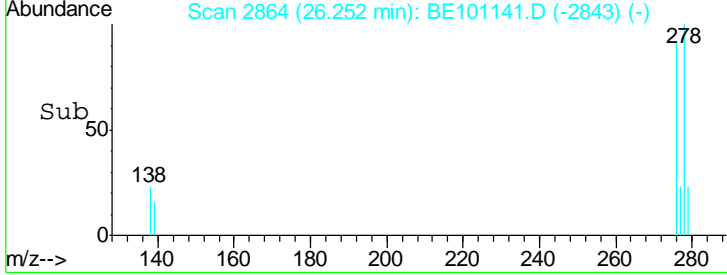
Instrument :
 BNA_E
 ClientSampled :
 SP5041



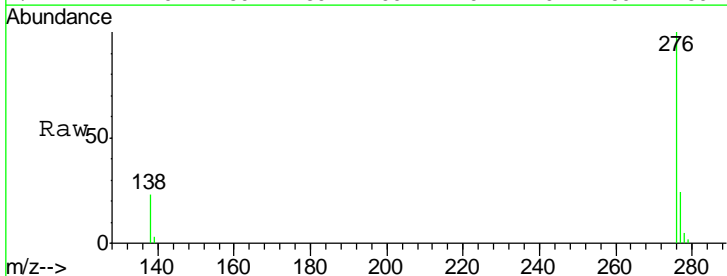
Tgt Ion	Resp	Lower	Upper
278	14921		
278	100		
139	18.9	15.0	22.4
279	25.3	22.6	33.8

Manual Integrations
 APPROVED

mohammad
 2/11/2020 8:27:10 AM



#39
 Benzo(g,h,i)perylene
 Concen: 0.565 ng
 RT: 27.00 min Scan# 3075
 Delta R.T. -0.02 min
 Lab File: BE101141.D
 Acq: 7 Feb 2020 17:06



Tgt Ion	Resp	Lower	Upper
276	17735		
276	100		
277	24.3	19.4	29.2
138	23.1	17.9	26.9

