

Data Path : Z:\SVOASRV\HPCHEM1\BNA_E\DATA\BE032919\
 Data File : BE099266.D
 Acq On : 29 Mar 2019 23:25
 Operator : JU/SJ
 Sample : K1982-08
 Misc :
 ALS Vial : 18 Sample Multiplier: 1

Instrument :
 BNA_E
 ClientSampleId :
 EXT-027-SW011-032519

Manual Integrations
 APPROVED

Sohil
 4/1/2019 5:45:17 PM

Quant Time: Mar 30 00:31:43 2019

Quant Method : Z:\SVOASRV\HPCHEM1\BNA_E\METHODS\8270-SIM-BE032519.M

Quant Title : ASP BNA STANDARDS FOR 5 POINT CALIBRATION

QLast Update : Tue Mar 26 07:02:06 2019

Response via : Initial Calibration

Internal Standards	R.T.	QIon	Response	Conc	Units	Dev(Min)
1) 1,4-Dichlorobenzene-d4	7.83	152	3792	0.40	ng	-0.01
7) Naphthalene-d8	10.63	136	14118	0.40	ng	0.00
13) Acenaphthene-d10	14.47	164	9567	0.40	ng	-0.01
19) Phenanthrene-d10	17.20	188	30518	0.40	ng	-0.01
27) Chrysene-d12	21.38	240	41939	0.40	ng	-0.01
34) Perylene-d12	23.89	264	41219	0.40	ng	0.00

System Monitoring Compounds

4) 2-Fluorophenol	5.41	112	3472	0.31	ng	0.00
5) Phenol-d6	6.99	99	4614	0.27	ng	0.00
8) Nitrobenzene-d5	8.98	82	3533	0.31	ng	-0.01
11) 2-Methylnaphthalene-d10	12.21	152	7333	0.27	ng	-0.01
14) 2,4,6-Tribromophenol	15.96	330	1495	0.50	ng	0.00
15) 2-Fluorobiphenyl	13.10	172	10248	0.26	ng	0.00
25) Fluoranthene-d10	19.23	212	110106	0.30	ng	-0.01
29) Terphenyl-d14	19.83	244	18708	0.21	ng	0.00

Target Compounds

						Qvalue
9) Naphthalene	10.67	128	48567	0.292	ng	100
12) 2-Methylnaphthalene	12.28	142	6450	0.217	ng	89
16) Acenaphthylene	14.20	152	5547	0.114	ng	# 94
17) Acenaphthene	14.53	154	19960	0.684	ng	99
18) Fluorene	15.50	166	24404	0.595	ng	# 99
22) Pentachlorophenol	16.85	266	390	0.379	ng	96
23) Phenanthrene	17.24	178	590152	6.585	ng	100
24) Anthracene	17.33	178	146432	1.808	ng	# 92
26) Fluoranthene	19.27	202	890993	7.791	ng	98
28) Pyrene	19.62	202	792979	5.691	ng	# 94
30) Benzo(a)anthracene	21.35	228	503782	3.640	ng	98
31) Chrysene	21.42	228	420653	2.844	ng	96
32) Bis(2-ethylhexyl)phthalate	21.28	149	28692	0.174	ng	99
33) Indeno(1,2,3-cd)pyrene	26.54	276	188806	1.349	ng	# 96
35) Benzo(b)fluoranthene	23.11	252	476733	3.515	ng	98
36) Benzo(k)fluoranthene	23.16	252	187580m	1.308	ng	
37) Benzo(a)pyrene	23.77	252	344976	2.723	ng	98
38) Dibenzo(a,h)anthracene	26.56	278	52352	0.465	ng	# 93
39) Benzo(g,h,i)perylene	27.36	276	174789	1.549	ng	99

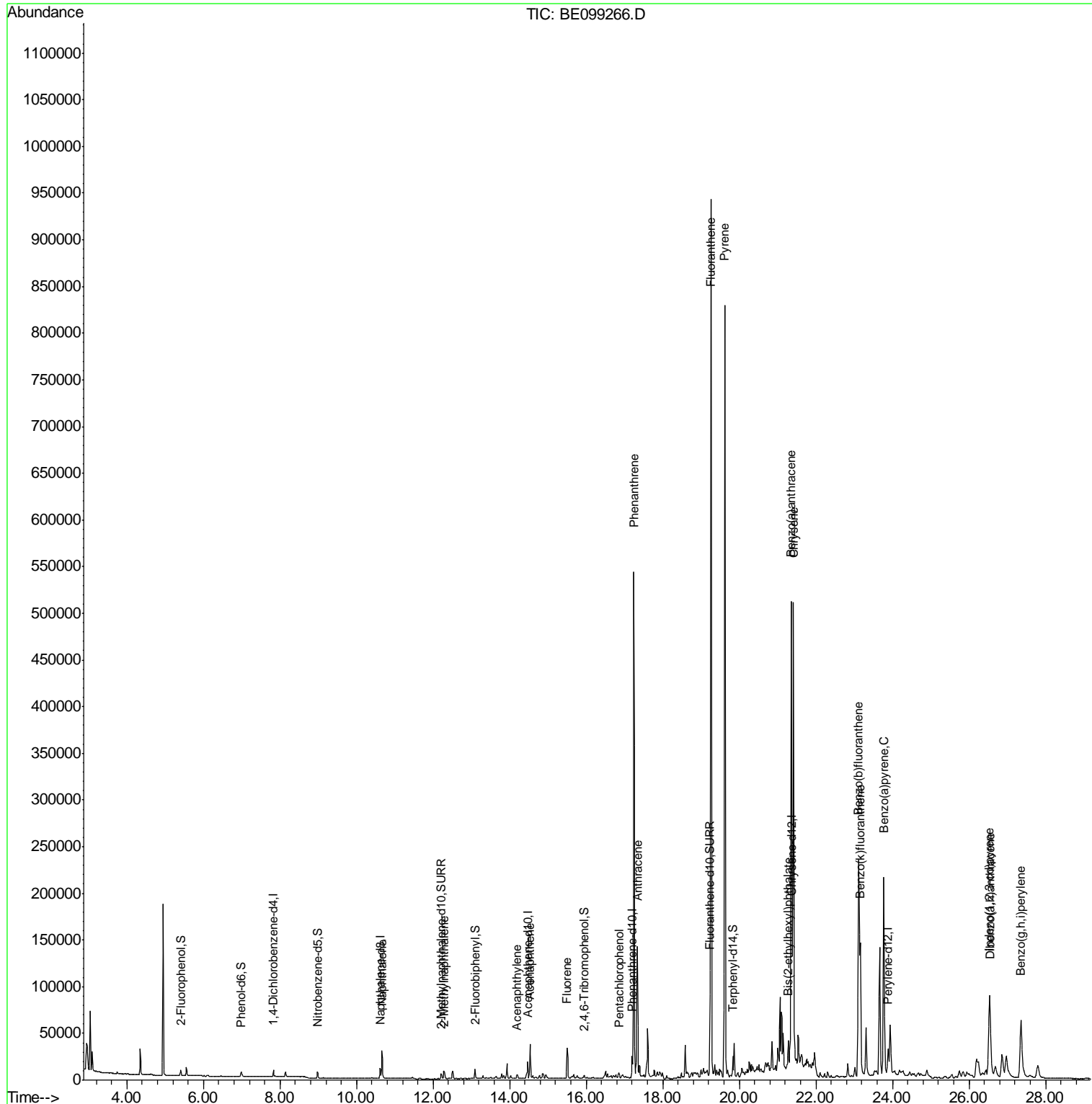
(#) = qualifier out of range (m) = manual integration (+) = signals summed

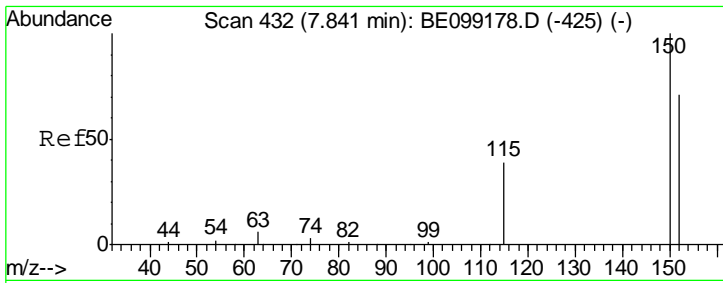
Data Path : Z:\SVOASRV\HPCHEM1\BNA_E\DATA\BE032919\
 Data File : BE099266.D
 Acq On : 29 Mar 2019 23:25
 Operator : JU/SJ
 Sample : K1982-08
 Misc :
 ALS Vial : 18 Sample Multiplier: 1

Instrument :
 BNA_E
Client Sampled :
 EXT-027-SW011-032519

Manual Integrations
APPROVED
 Sohil
 4/1/2019 5:45:17 PM

Quant Time: Mar 30 00:31:43 2019
 Quant Method : Z:\SVOASRV\HPCHEM1\BNA_E\METHODS\8270-SIM-BE032519.M
 Quant Title : ASP BNA STANDARDS FOR 5 POINT CALIBRATION
 QLast Update : Tue Mar 26 07:02:06 2019
 Response via : Initial Calibration





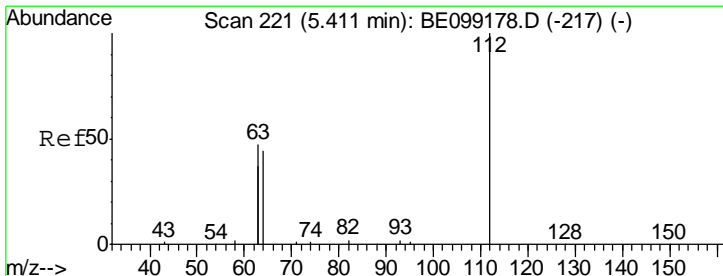
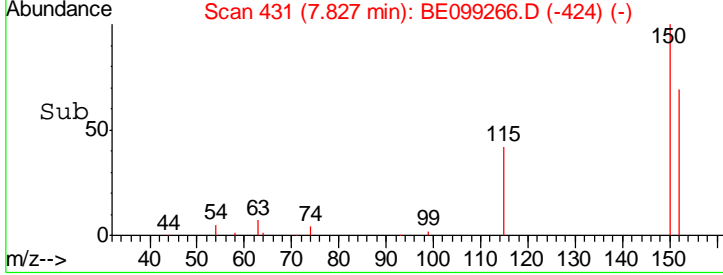
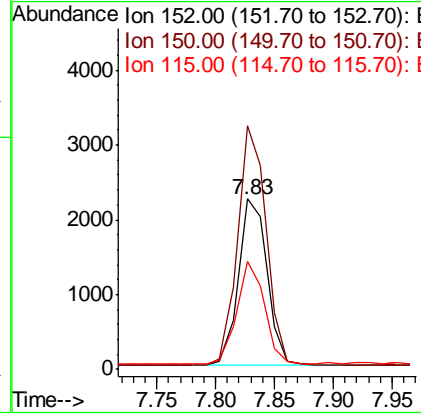
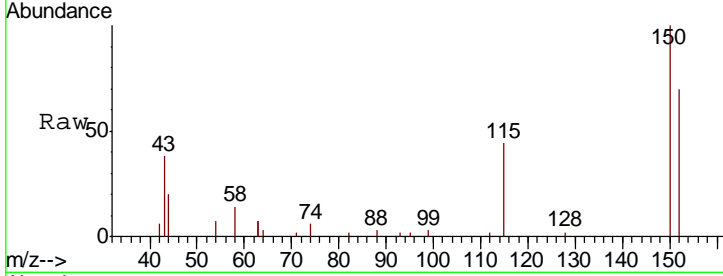
#1
 1,4-Dichlorobenzene-d4
 Concen: 0.400 ng
 RT: 7.83 min Scan# 431
 Delta R.T. -0.01 min
 Lab File: BE099266.D
 Acq: 29 Mar 2019 23:25

Instrument :
 BNA_E
ClientSampled :
 EXT-027-SW011-032519

Tgt Ion	Resp	Lower	Upper
152	3792		
152	100		
150	143.1	112.8	169.2
115	63.3	45.1	67.7

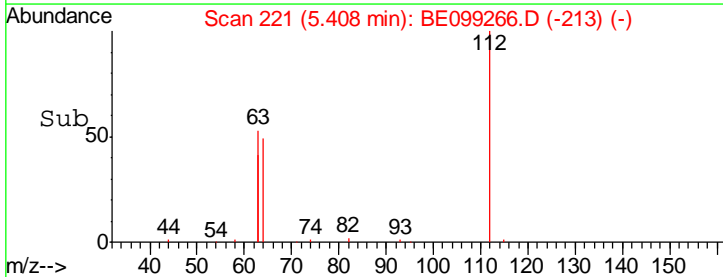
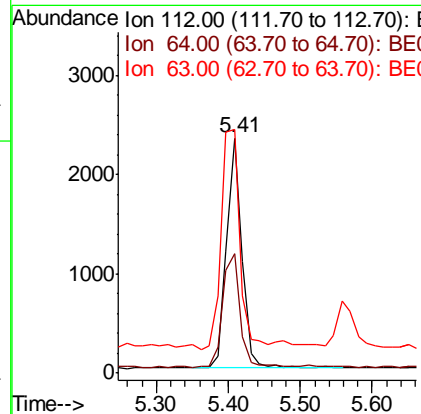
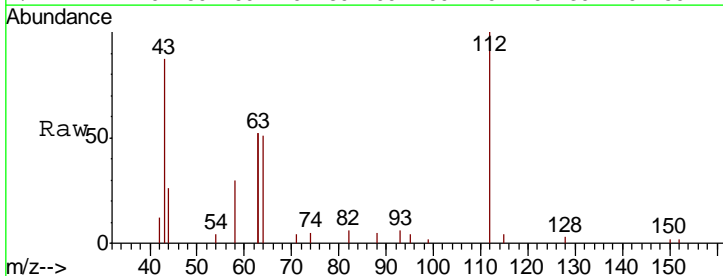
Manual Integrations
APPROVED

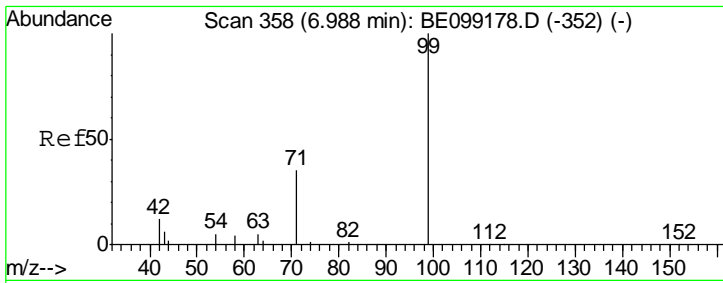
Sohil
 4/1/2019 5:45:17 PM



#4
 2-Fluorophenol
 Concen: 0.307 ng
 RT: 5.41 min Scan# 221
 Delta R.T. -0.00 min
 Lab File: BE099266.D
 Acq: 29 Mar 2019 23:25

Tgt Ion	Resp	Lower	Upper
112	3472		
112	100		
64	56.0	46.2	69.2
63	114.1	89.9	134.9



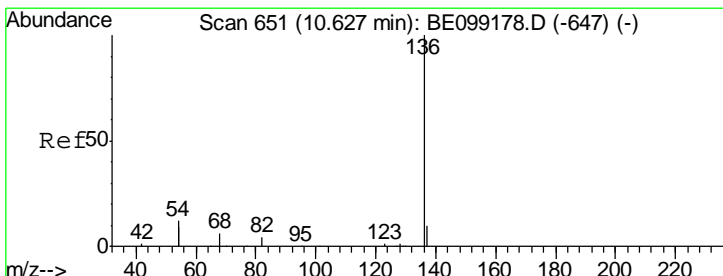
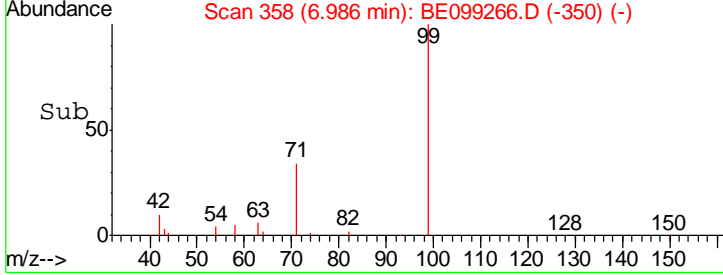
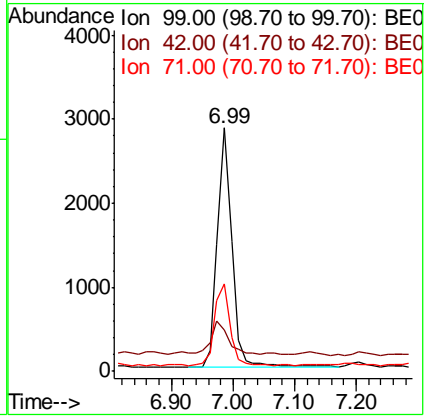
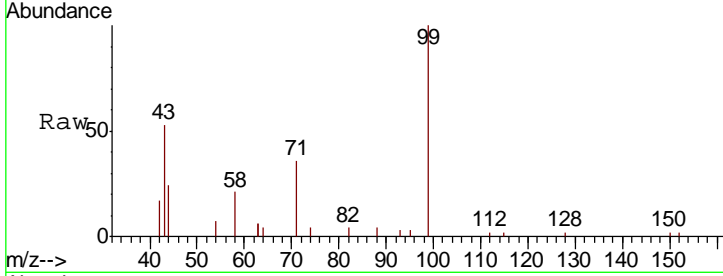


#5
 Phenol-d6
 Concen: 0.267 ng
 RT: 6.99 min Scan# 358
 Delta R.T. -0.00 min
 Lab File: BE099266.D
 Acq: 29 Mar 2019 23:25

Instrument :
 BNA_E
ClientSampled :
 EXT-027-SW011-032519

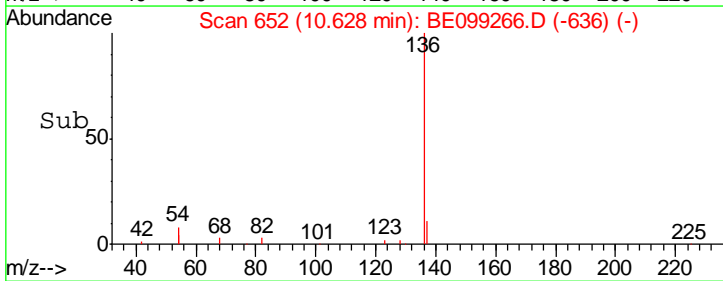
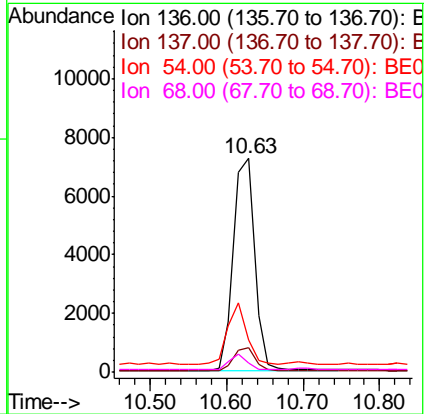
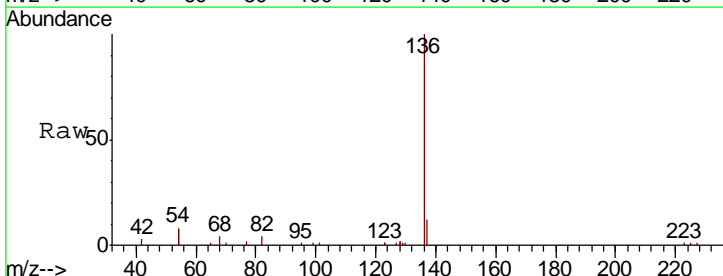
Tgt Ion	Resp	Lower	Upper
99	4614		
99	100		
42	16.8	12.4	18.6
71	36.1	28.4	42.6

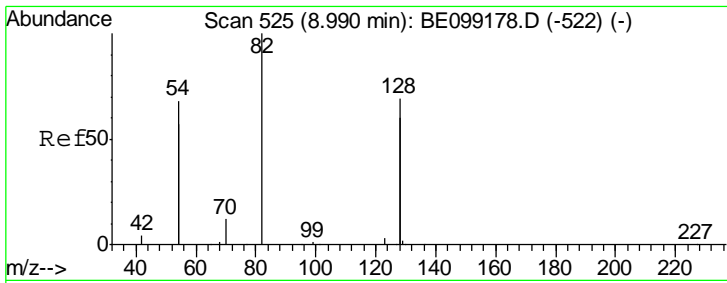
Manual Integrations
APPROVED
 Sohil
 4/1/2019 5:45:17 PM



#7
 Naphthalene-d8
 Concen: 0.400 ng
 RT: 10.63 min Scan# 652
 Delta R.T. 0.00 min
 Lab File: BE099266.D
 Acq: 29 Mar 2019 23:25

Tgt Ion	Resp	Lower	Upper
136	14118		
136	100		
137	11.5	8.7	13.1
54	15.2	18.7	28.1#
68	4.2	5.2	7.8#





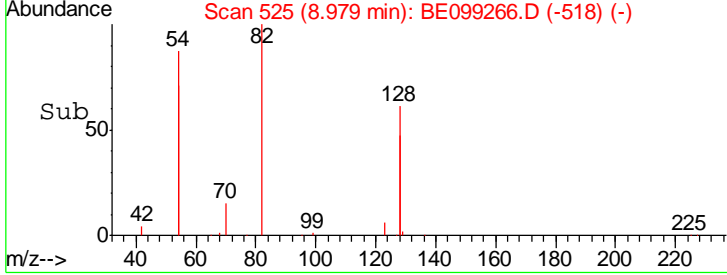
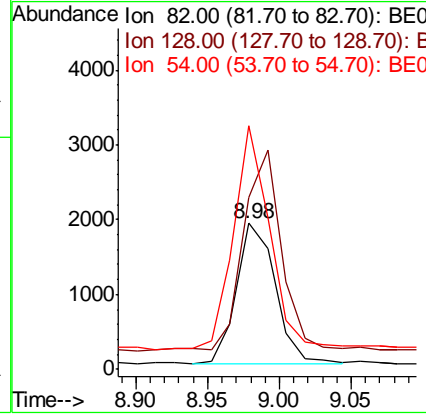
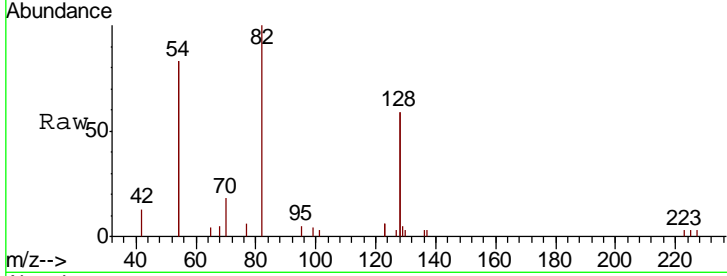
#8
 Nitrobenzene-d5
 Concen: 0.306 ng
 RT: 8.98 min Scan# 525
 Delta R.T. -0.01 min
 Lab File: BE099266.D
 Acq: 29 Mar 2019 23:25

Instrument :
 BNA_E
ClientSampled :
 EXT-027-SW011-032519

Tgt Ion	Resp	Lower	Upper
82	100		
128	117.2	107.5	161.3
54	166.5	106.3	159.5#

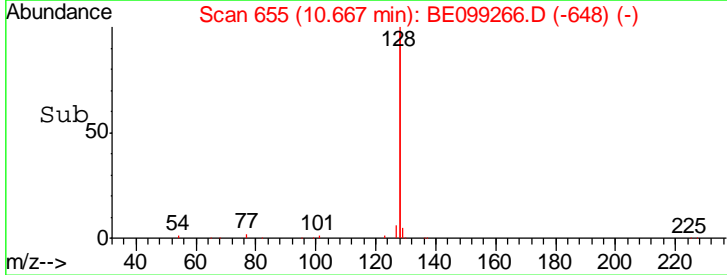
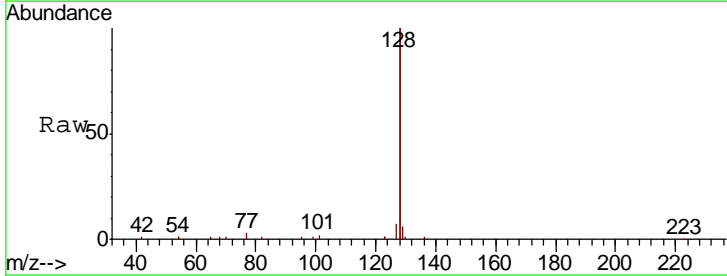
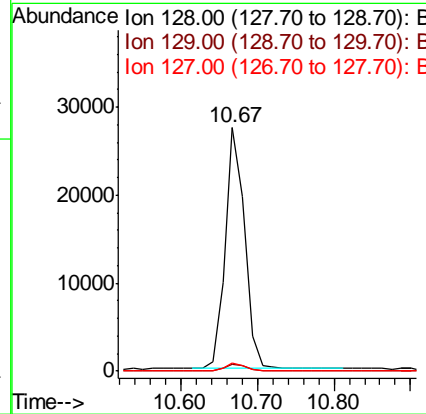
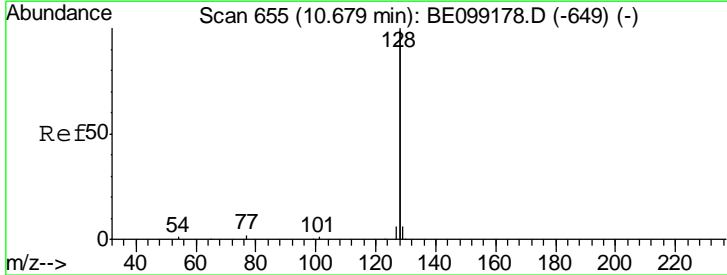
Manual Integrations
APPROVED

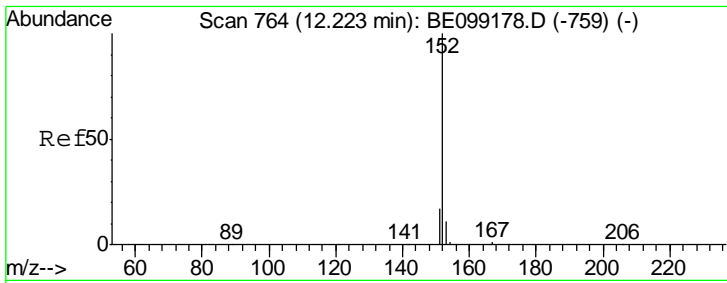
Sohil
 4/1/2019 5:45:17 PM



#9
 Naphthalene
 Concen: 0.292 ng
 RT: 10.67 min Scan# 655
 Delta R.T. -0.01 min
 Lab File: BE099266.D
 Acq: 29 Mar 2019 23:25

Tgt Ion	Resp	Lower	Upper
128	100		
129	2.9	2.3	3.5
127	3.5	2.6	3.8





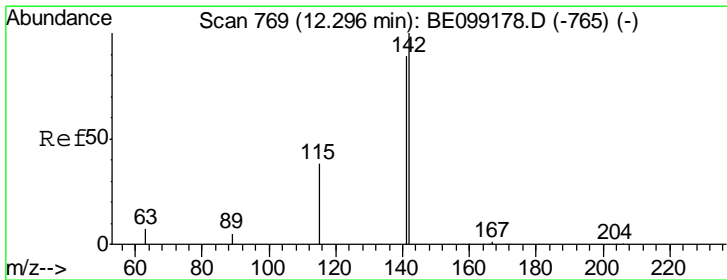
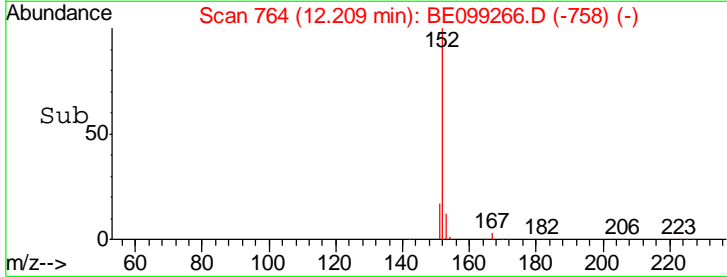
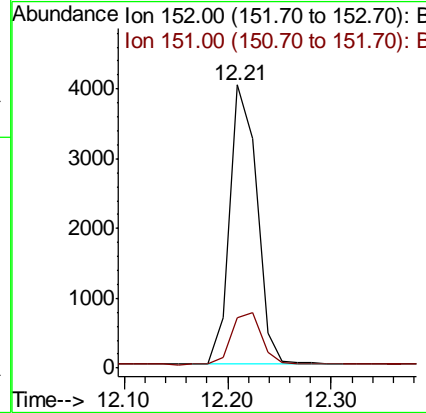
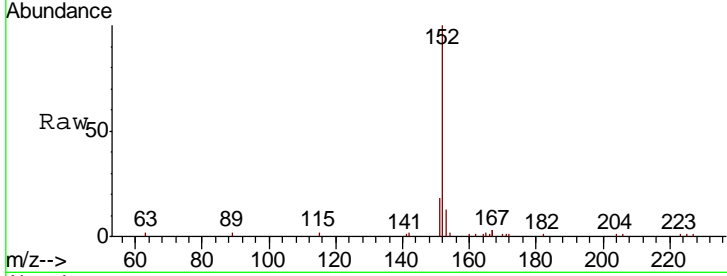
#11
 2-Methylnaphthalene-d10
 Concen: 0.270 ng
 RT: 12.21 min Scan# 764
 Delta R.T. -0.01 min
 Lab File: BE099266.D
 Acq: 29 Mar 2019 23:25

Instrument :
 BNA_E
 ClientSampleId :
 EXT-027-SW011-032519

Tgt Ion:152 Resp: 7333
 Ion Ratio Lower Upper
 152 100
 151 20.6 15.0 22.6

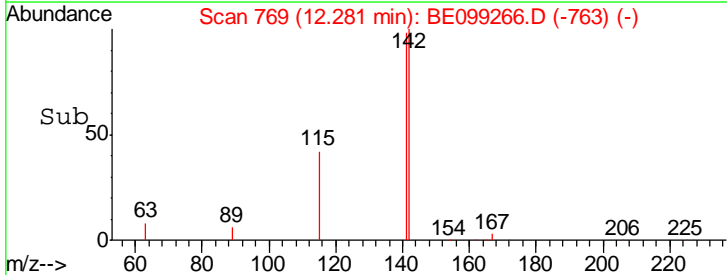
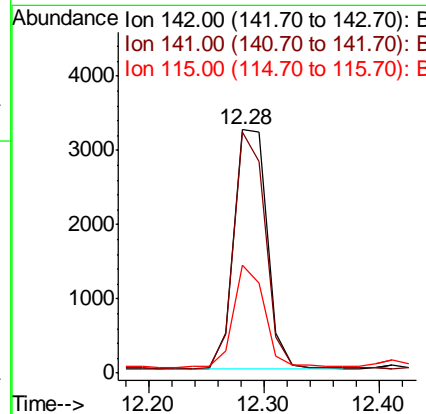
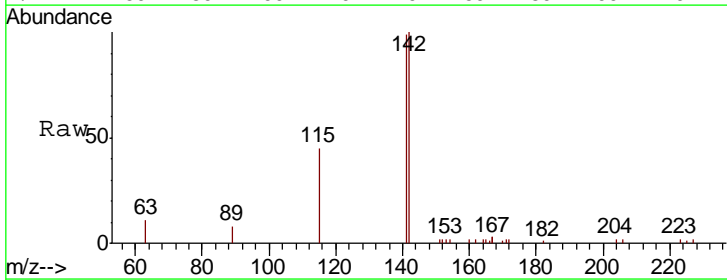
Manual Integrations
 APPROVED

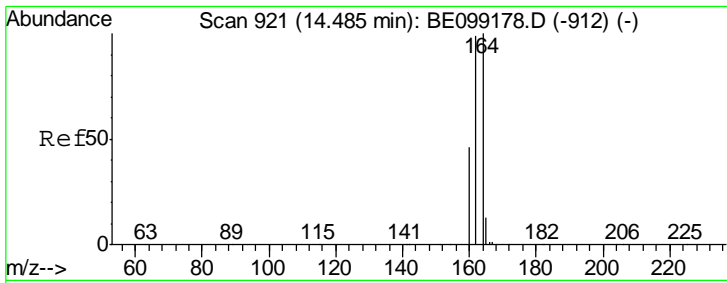
Sohil
 4/1/2019 5:45:17 PM



#12
 2-Methylnaphthalene
 Concen: 0.217 ng
 RT: 12.28 min Scan# 769
 Delta R.T. -0.01 min
 Lab File: BE099266.D
 Acq: 29 Mar 2019 23:25

Tgt Ion:142 Resp: 6450
 Ion Ratio Lower Upper
 142 100
 141 98.8 71.3 106.9
 115 44.5 30.4 45.6





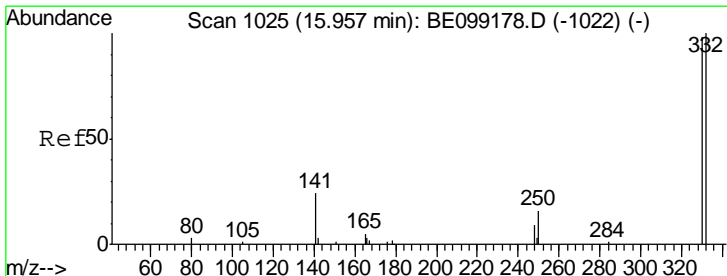
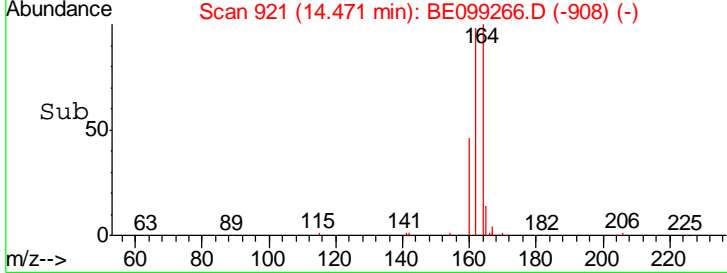
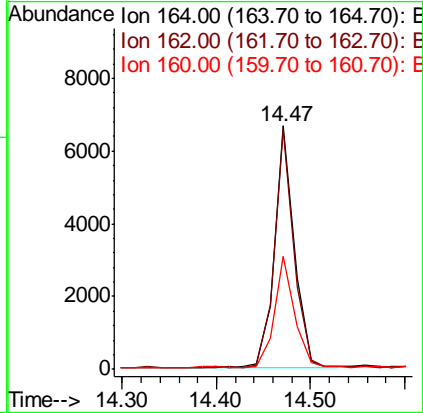
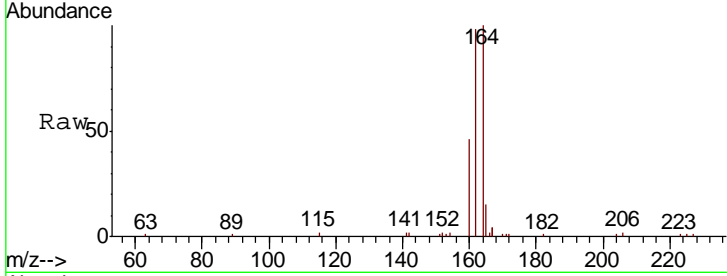
#13
 Acenaphthene-d10
 Concen: 0.400 ng
 RT: 14.47 min Scan# 921
 Delta R.T. -0.01 min
 Lab File: BE099266.D
 Acq: 29 Mar 2019 23:25

Instrument :
 BNA_E
ClientSampled :
 EXT-027-SW011-032519

Tgt Ion	Resp	Lower	Upper
164	100		
162	98.4	79.2	118.8
160	46.4	36.7	55.1

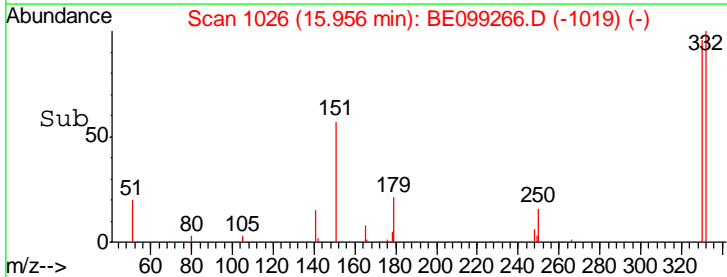
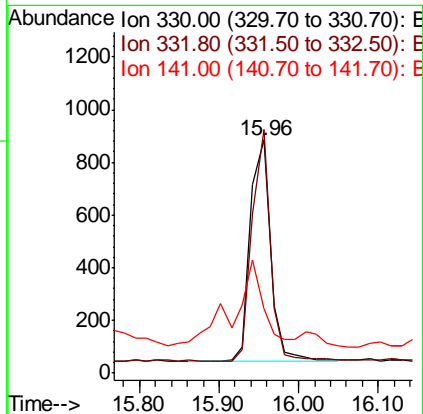
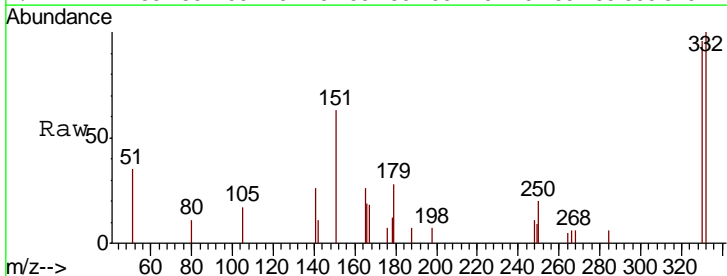
Manual Integrations
APPROVED

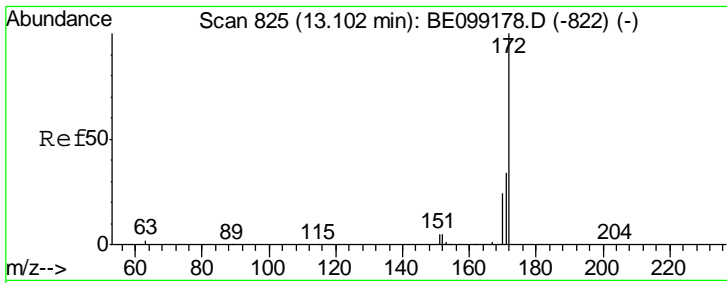
Sohil
 4/1/2019 5:45:17 PM



#14
 2,4,6-Tribromophenol
 Concen: 0.503 ng
 RT: 15.96 min Scan# 1026
 Delta R.T. -0.00 min
 Lab File: BE099266.D
 Acq: 29 Mar 2019 23:25

Tgt Ion	Resp	Lower	Upper
330	100		
332	93.8	71.3	106.9
141	49.7	21.7	32.5#





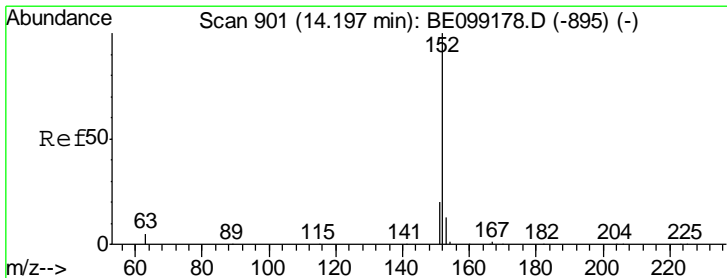
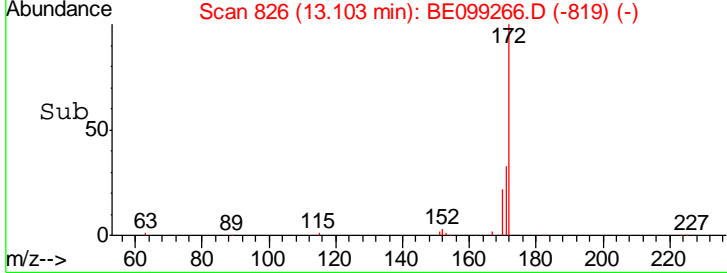
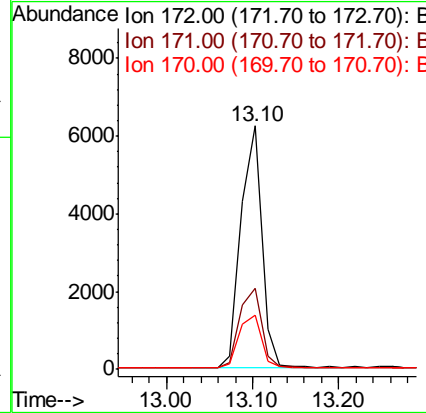
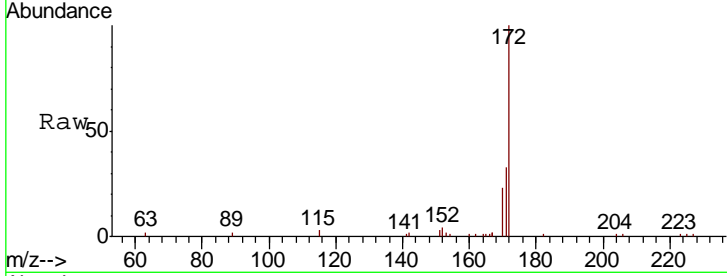
#15
 2-Fluorobiphenyl
 Concen: 0.263 ng
 RT: 13.10 min Scan# 826
 Delta R.T. 0.00 min
 Lab File: BE099266.D
 Acq: 29 Mar 2019 23:25

Instrument :
 BNA_E
 ClientSampled :
 EXT-027-SW011-032519

Tgt Ion	Resp	Lower	Upper
172	10248		
171	33.4	27.4	41.0
170	22.5	19.1	28.7

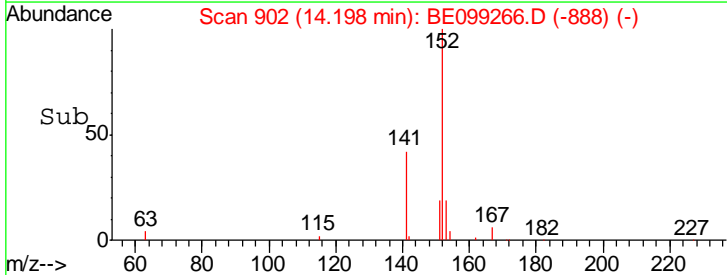
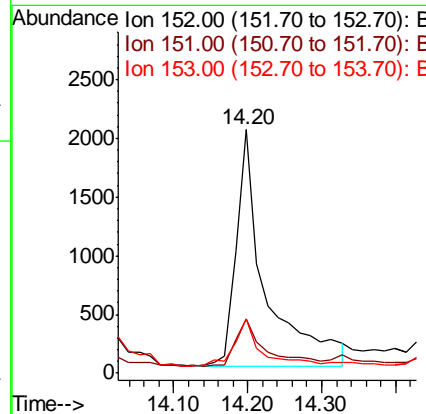
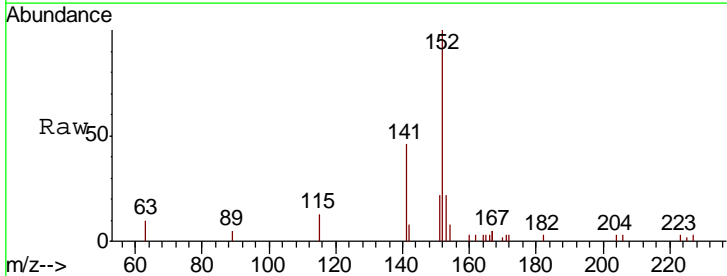
Manual Integrations
 APPROVED

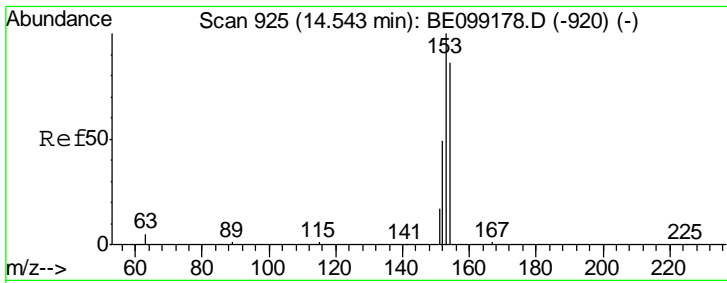
Sohil
 4/1/2019 5:45:17 PM



#16
 Acenaphthylene
 Concen: 0.114 ng
 RT: 14.20 min Scan# 902
 Delta R.T. 0.00 min
 Lab File: BE099266.D
 Acq: 29 Mar 2019 23:25

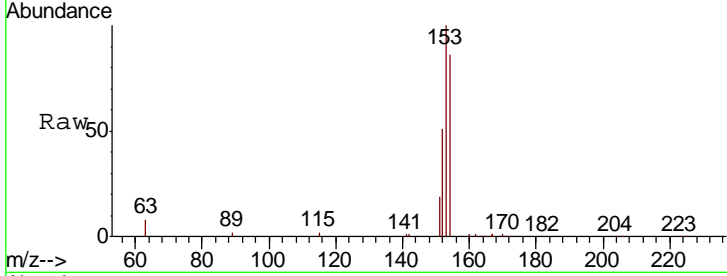
Tgt Ion	Resp	Lower	Upper
152	5547		
151	20.2	15.7	23.5
153	18.0	10.6	15.8#





#17
 Acenaphthene
 Concen: 0.684 ng
 RT: 14.53 min Scan# 925
 Delta R.T. -0.01 min
 Lab File: BE099266.D
 Acq: 29 Mar 2019 23:25

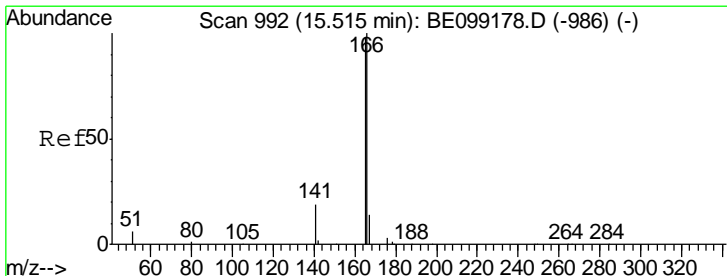
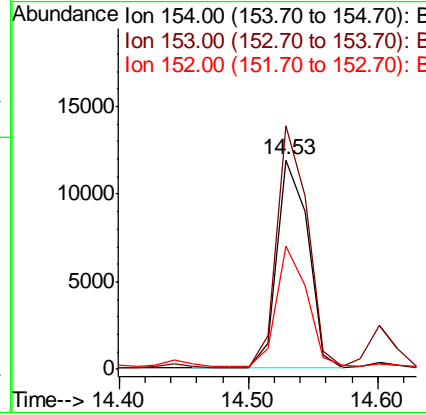
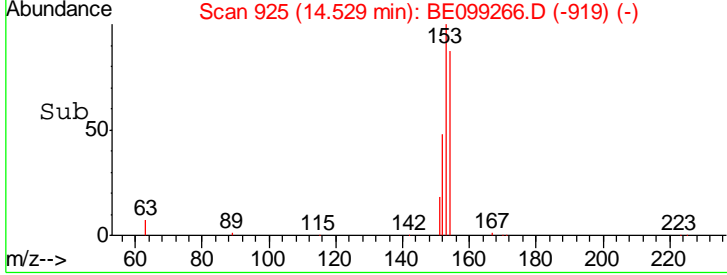
Instrument :
 BNA_E
ClientSampled :
 EXT-027-SW011-032519



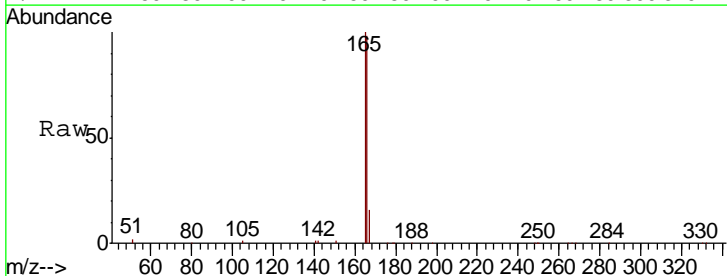
Tgt Ion: 154 Resp: 19960

Ion	Ratio	Lower	Upper
154	100		
153	115.1	93.4	140.0
152	57.1	46.6	69.8

Manual Integrations
APPROVED
 Sohil
 4/1/2019 5:45:17 PM

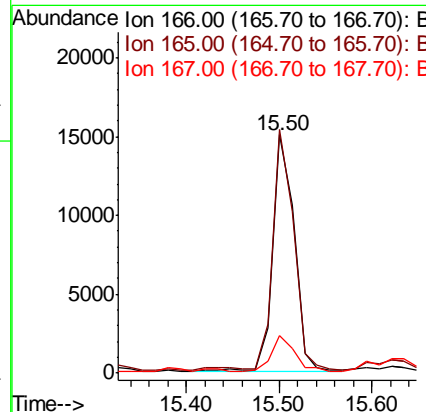
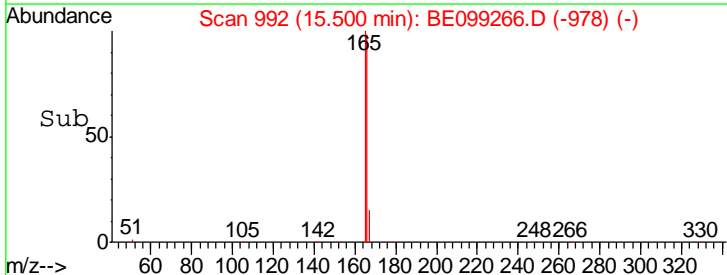


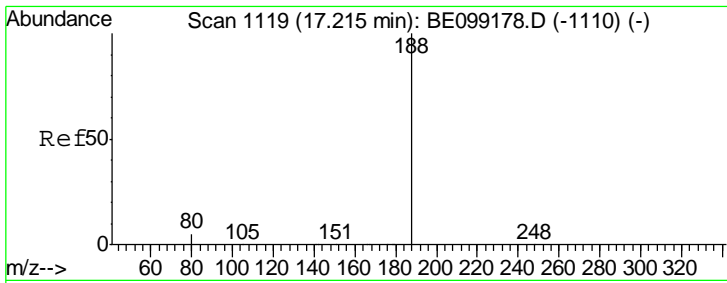
#18
 Fluorene
 Concen: 0.595 ng
 RT: 15.50 min Scan# 992
 Delta R.T. -0.01 min
 Lab File: BE099266.D
 Acq: 29 Mar 2019 23:25



Tgt Ion: 166 Resp: 24404

Ion	Ratio	Lower	Upper
166	100		
165	98.7	78.9	118.3
167	16.8	10.9	16.3#





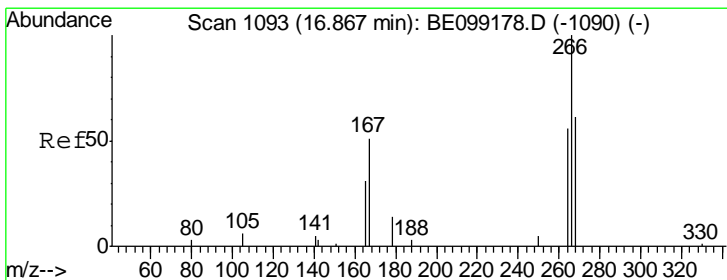
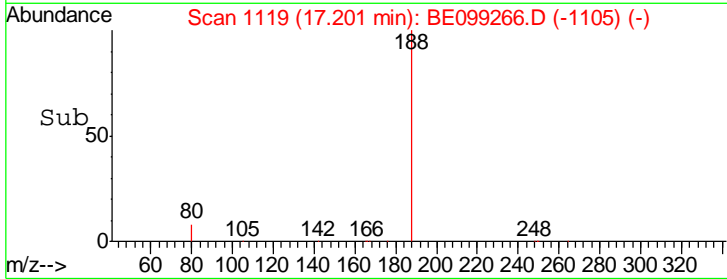
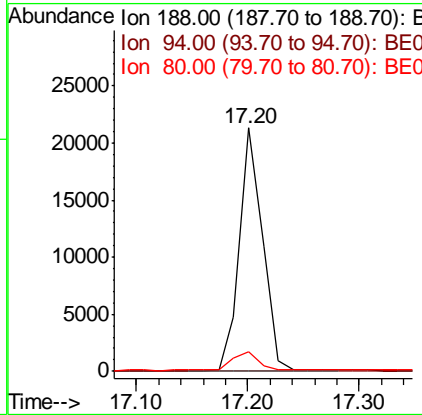
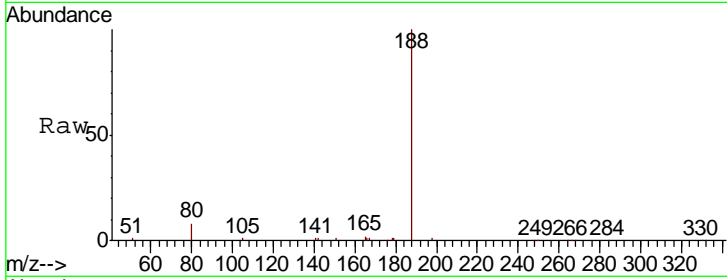
#19
 Phenanthrene-d10
 Concen: 0.400 ng
 RT: 17.20 min Scan# 1119
 Delta R.T. -0.01 min
 Lab File: BE099266.D
 Acq: 29 Mar 2019 23:25

Instrument :
 BNA_E
ClientSampled :
 EXT-027-SW011-032519

Tgt Ion	Ratio	Lower	Upper
188	100		
94	0.0	0.0	0.0
80	8.2	4.5	6.7#

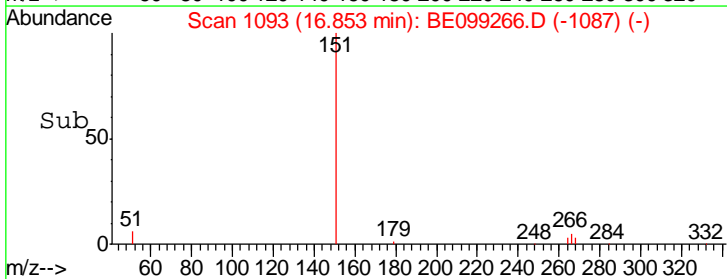
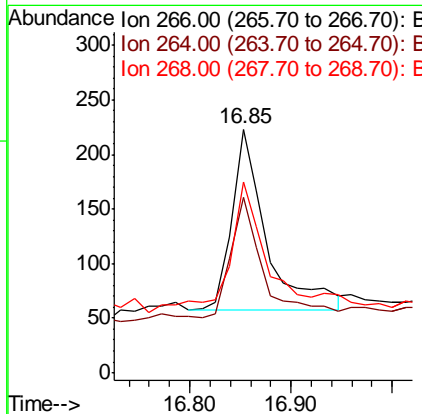
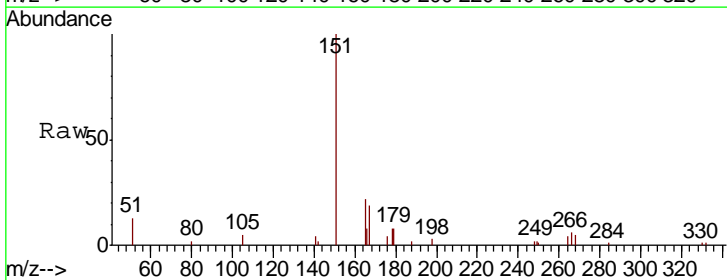
Manual Integrations
APPROVED

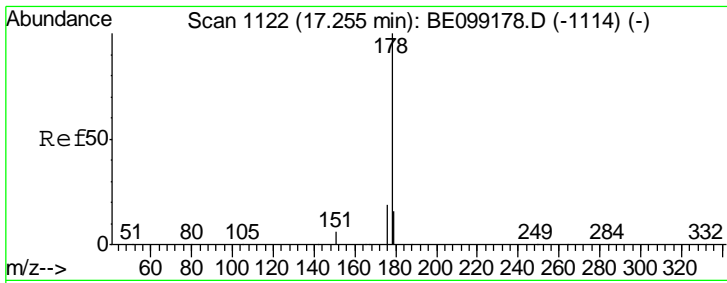
Sohil
 4/1/2019 5:45:17 PM



#22
 Pentachlorophenol
 Concen: 0.379 ng
 RT: 16.85 min Scan# 1093
 Delta R.T. -0.01 min
 Lab File: BE099266.D
 Acq: 29 Mar 2019 23:25

Tgt Ion	Ratio	Lower	Upper
266	100		
264	72.2	54.4	81.6
268	78.5	61.3	91.9



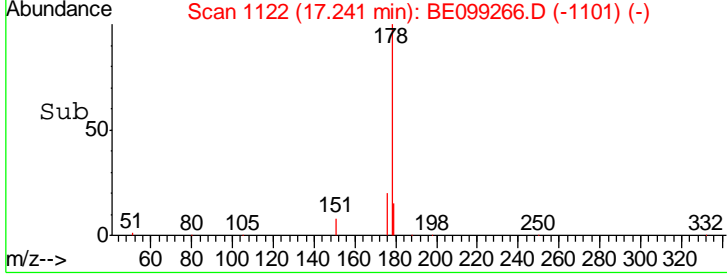
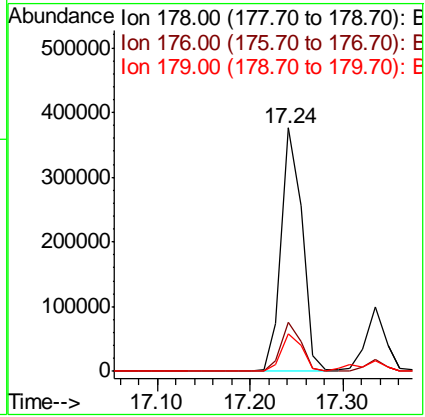
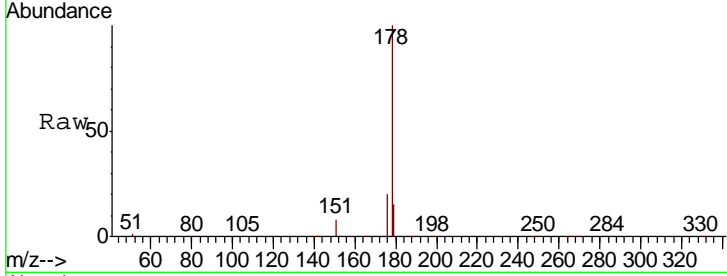


#23
 Phenanthrene
 Concen: 6.585 ng
 RT: 17.24 min Scan# 1122
 Delta R.T. -0.01 min
 Lab File: BE099266.D
 Acq: 29 Mar 2019 23:25

Instrument :
 BNA_E
 ClientSampled :
 EXT-027-SW011-032519

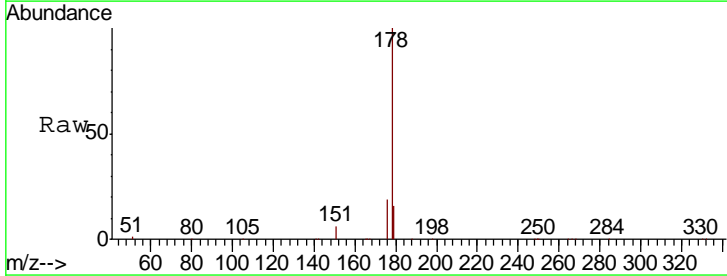
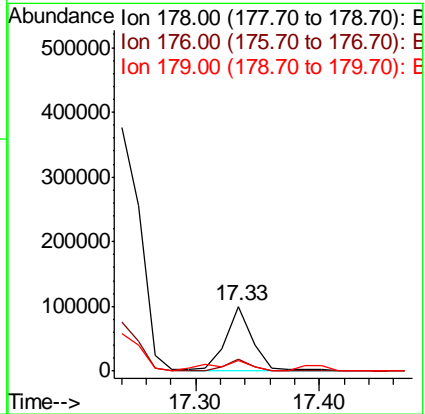
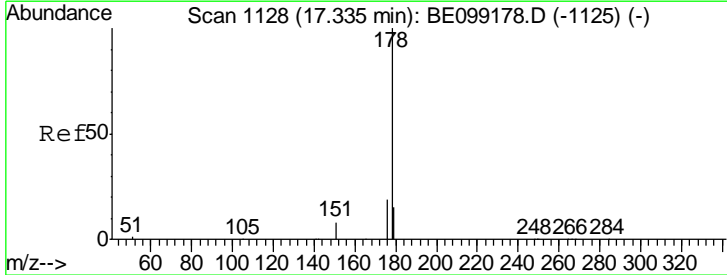
Tgt Ion	Resp	Lower	Upper
178	100		
176	19.5	15.4	23.2
179	15.6	12.3	18.5

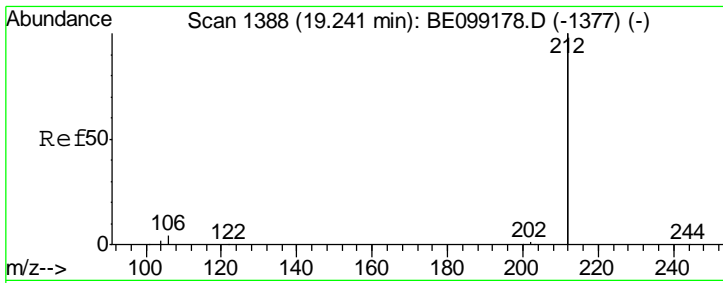
Manual Integrations
APPROVED
 Sohil
 4/1/2019 5:45:17 PM



#24
 Anthracene
 Concen: 1.808 ng
 RT: 17.33 min Scan# 1129
 Delta R.T. -0.00 min
 Lab File: BE099266.D
 Acq: 29 Mar 2019 23:25

Tgt Ion	Resp	Lower	Upper
178	100		
176	18.5	15.1	22.7
179	22.3	12.4	18.6#





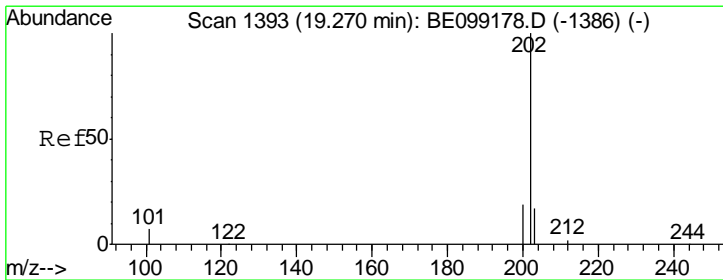
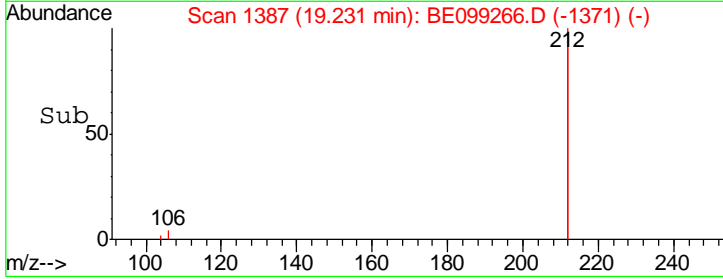
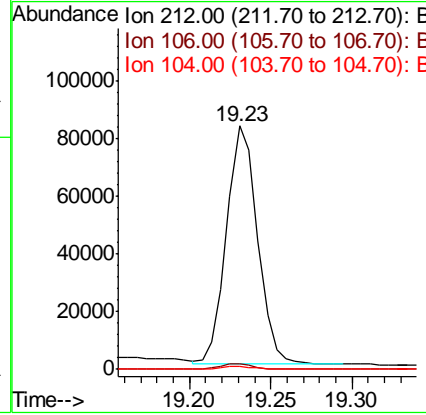
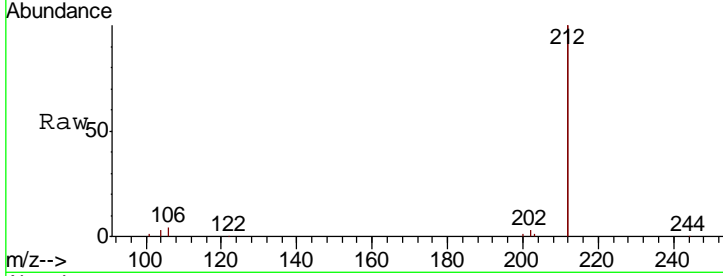
#25
 Fluoranthene-d10
 Concen: 0.298 ng
 RT: 19.23 min Scan# 1387
 Delta R.T. -0.01 min
 Lab File: BE099266.D
 Acq: 29 Mar 2019 23:25

Instrument :
 BNA_E
ClientSampled :
 EXT-027-SW011-032519

Tgt Ion	Resp	Lower	Upper
212	110106		
106	2.2	1.8	2.8
104	1.3	1.1	1.7

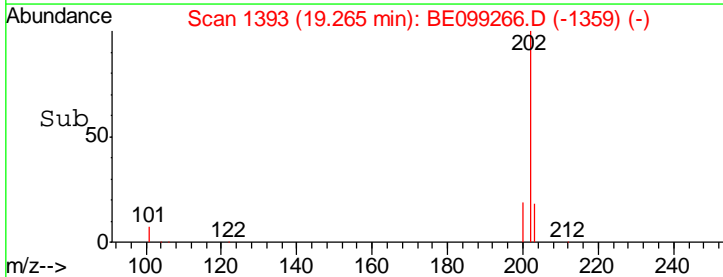
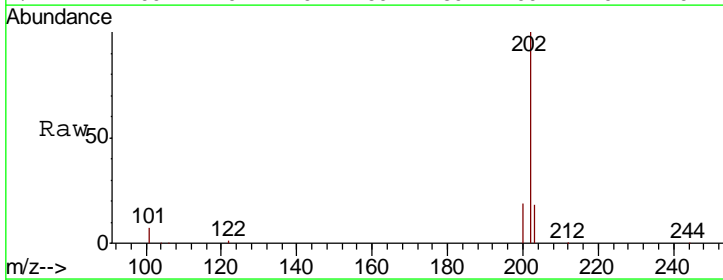
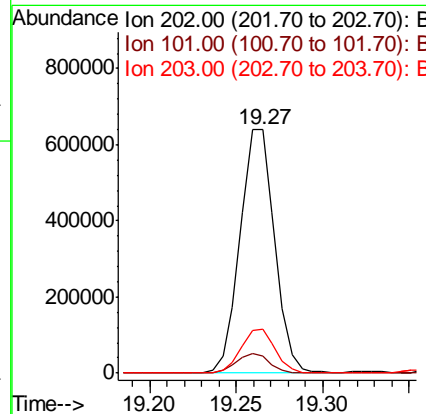
Manual Integrations
APPROVED

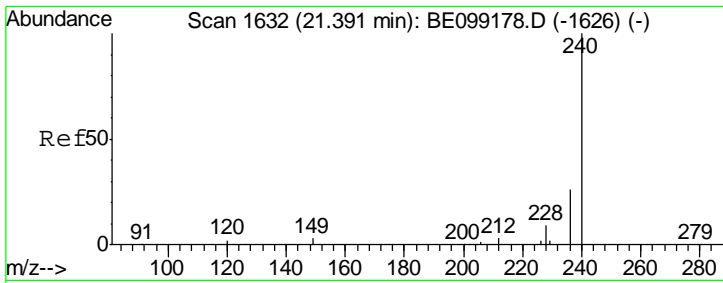
Sohil
 4/1/2019 5:45:17 PM



#26
 Fluoranthene
 Concen: 7.791 ng
 RT: 19.27 min Scan# 1393
 Delta R.T. -0.00 min
 Lab File: BE099266.D
 Acq: 29 Mar 2019 23:25

Tgt Ion	Resp	Lower	Upper
202	890993		
101	7.8	7.0	10.4
203	17.8	13.8	20.6





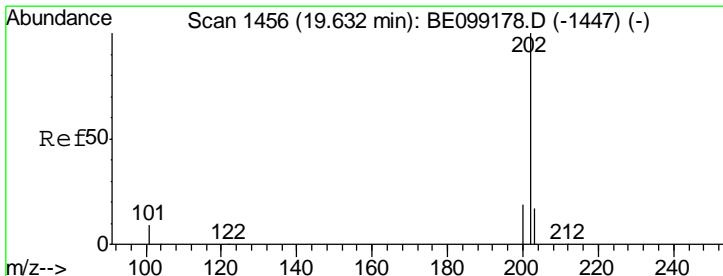
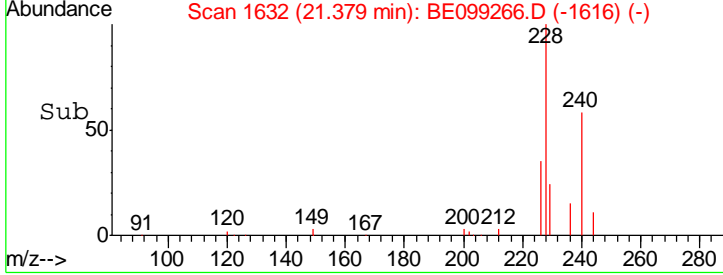
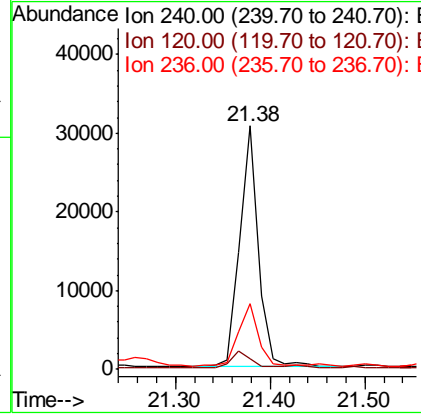
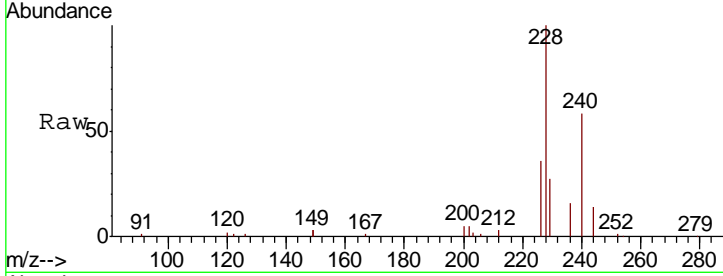
#27
 Chrysene-d12
 Concen: 0.400 ng
 RT: 21.38 min Scan# 1632
 Delta R.T. -0.01 min
 Lab File: BE099266.D
 Acq: 29 Mar 2019 23:25

Instrument :
 BNA_E
 ClientSampled :
 EXT-027-SW011-032519

Tgt Ion	Resp	Lower	Upper
240	100		
120	4.3	2.6	3.8#
236	27.1	20.9	31.3

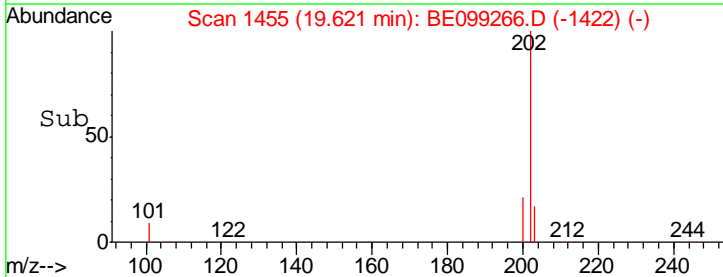
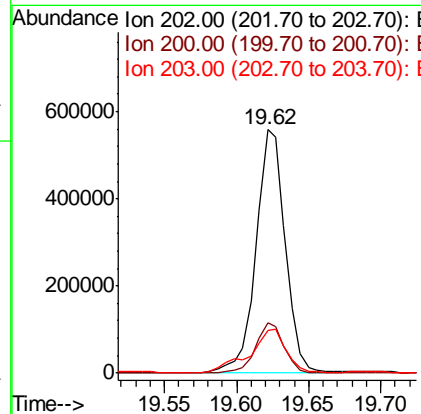
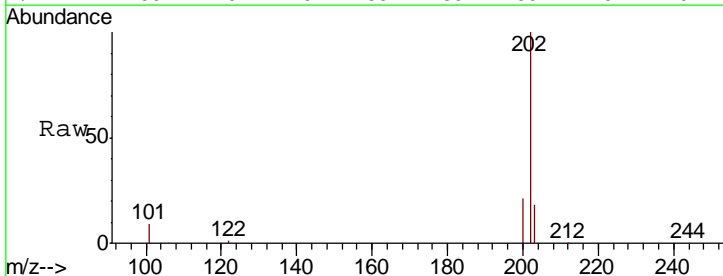
Manual Integrations
 APPROVED

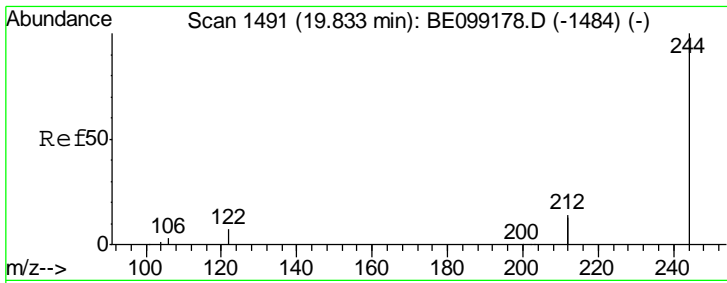
Sohil
 4/1/2019 5:45:17 PM



#28
 Pyrene
 Concen: 5.691 ng
 RT: 19.62 min Scan# 1455
 Delta R.T. -0.01 min
 Lab File: BE099266.D
 Acq: 29 Mar 2019 23:25

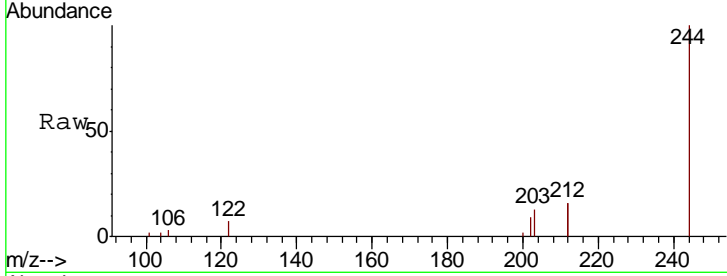
Tgt Ion	Resp	Lower	Upper
202	100		
200	20.2	15.8	23.8
203	22.6	14.1	21.1#





#29
 Terphenyl-d14
 Concen: 0.205 ng
 RT: 19.83 min Scan# 1491
 Delta R.T. -0.00 min
 Lab File: BE099266.D
 Acq: 29 Mar 2019 23:25

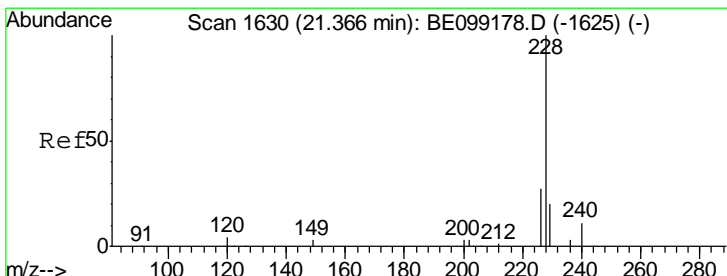
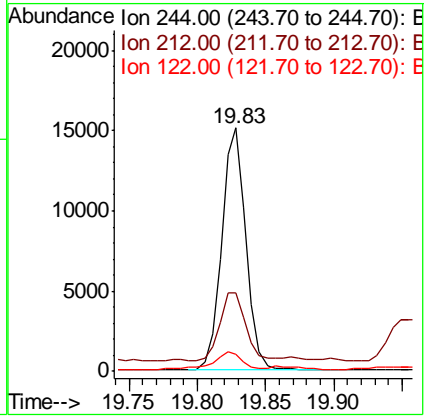
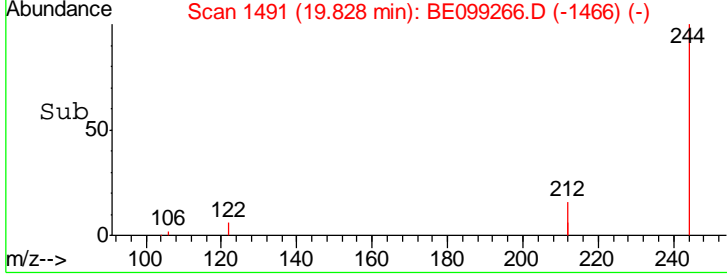
Instrument :
 BNA_E
ClientSampled :
 EXT-027-SW011-032519



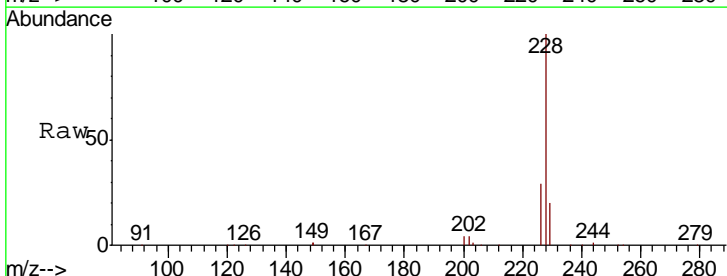
Tgt Ion: 244 Resp: 18708

Ion	Ratio	Lower	Upper
244	100		
212	32.1	22.7	34.1
122	7.2	5.8	8.6

Manual Integrations
APPROVED
 Sohil
 4/1/2019 5:45:17 PM

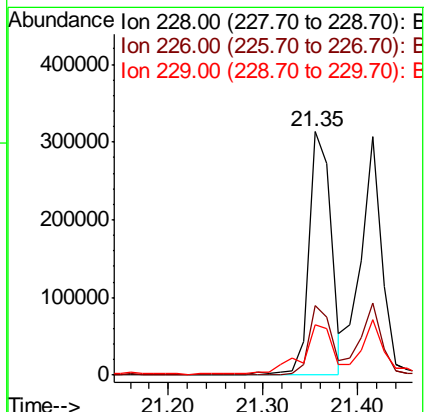
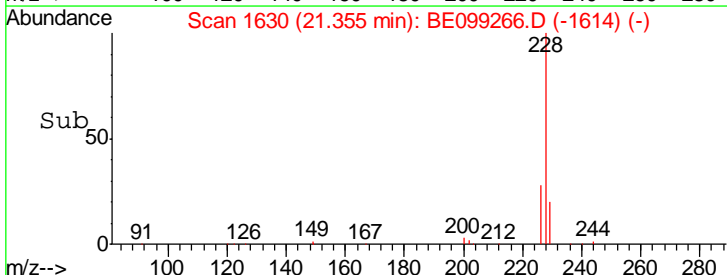


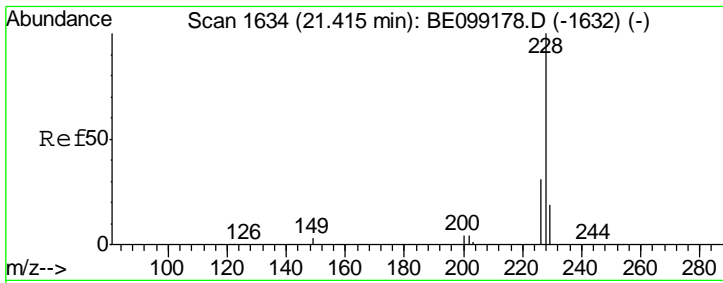
#30
 Benzo(a)anthracene
 Concen: 3.640 ng
 RT: 21.35 min Scan# 1630
 Delta R.T. -0.01 min
 Lab File: BE099266.D
 Acq: 29 Mar 2019 23:25



Tgt Ion: 228 Resp: 503782

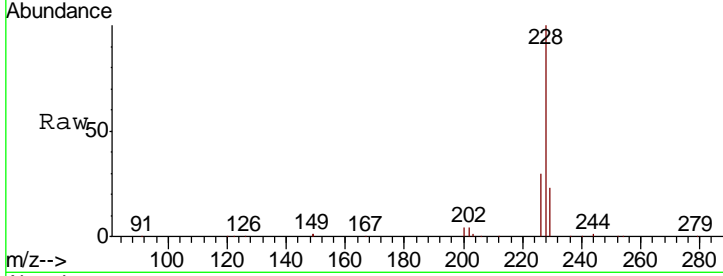
Ion	Ratio	Lower	Upper
228	100		
226	28.7	21.7	32.5
229	20.5	15.9	23.9





#31
 Chrysene
 Concen: 2.844 ng
 RT: 21.42 min Scan# 1635
 Delta R.T. 0.00 min
 Lab File: BE099266.D
 Acq: 29 Mar 2019 23:25

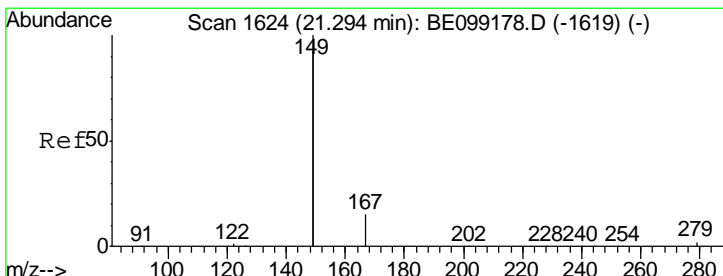
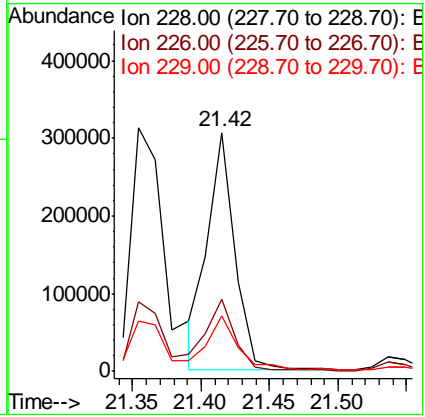
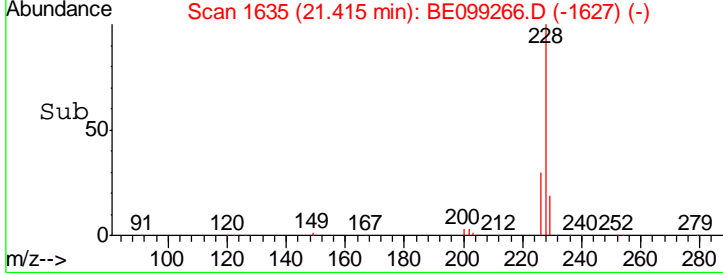
Instrument :
 BNA_E
 ClientSampled :
 EXT-027-SW011-032519



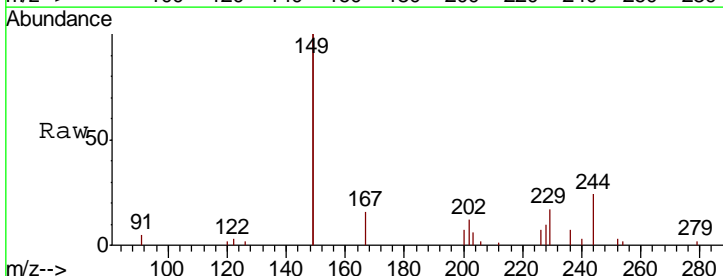
Tgt Ion: 228 Resp: 420653

Ion	Ratio	Lower	Upper
228	100		
226	30.5	24.8	37.2
229	23.0	15.4	23.0

Manual Integrations
APPROVED
 Sohil
 4/1/2019 5:45:17 PM

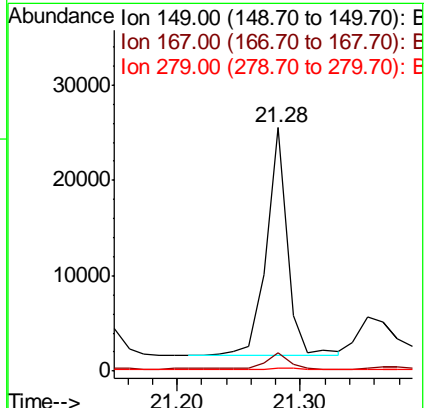
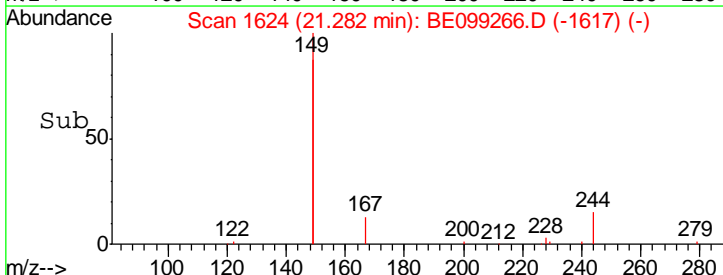


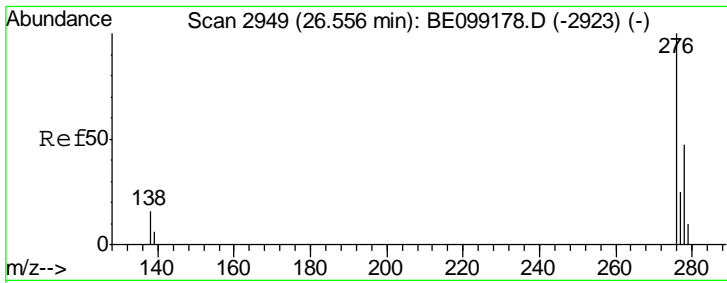
#32
 Bis(2-ethylhexyl)phthalate
 Concen: 0.174 ng
 RT: 21.28 min Scan# 1624
 Delta R.T. -0.01 min
 Lab File: BE099266.D
 Acq: 29 Mar 2019 23:25



Tgt Ion: 149 Resp: 28692

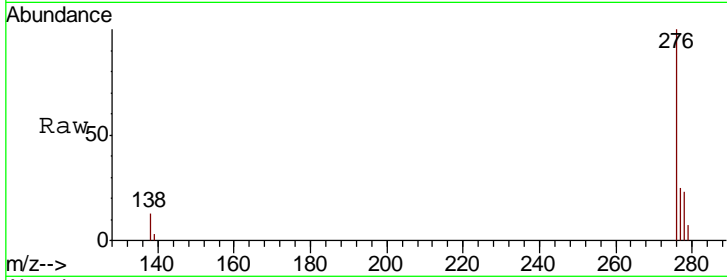
Ion	Ratio	Lower	Upper
149	100		
167	8.0	5.9	8.9
279	1.2	1.0	1.6





#33
 Indeno(1,2,3-cd)pyrene
 Concen: 1.349 ng
 RT: 26.54 min Scan# 2945
 Delta R.T. -0.02 min
 Lab File: BE099266.D
 Acq: 29 Mar 2019 23:25

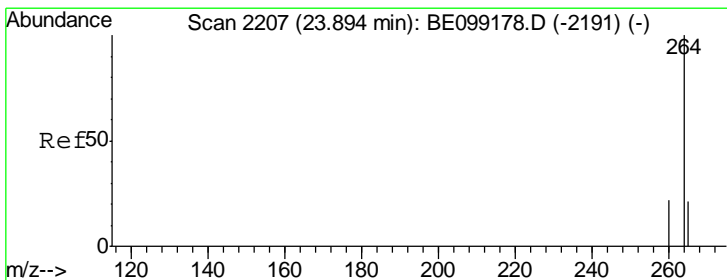
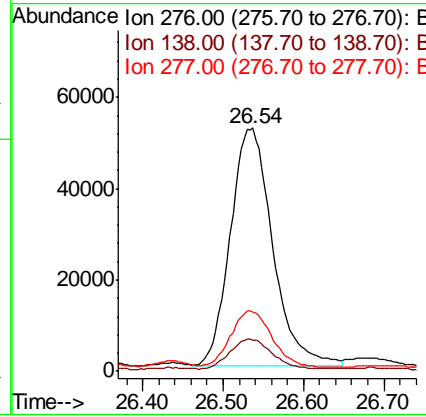
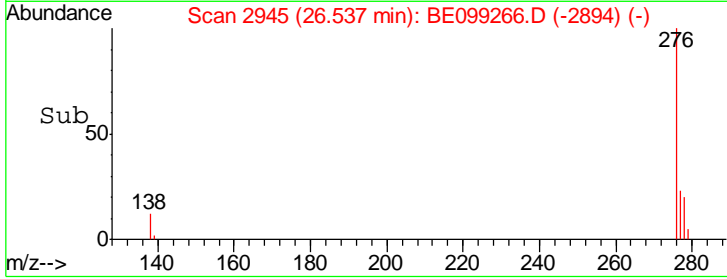
Instrument :
 BNA_E
ClientSampled :
 EXT-027-SW011-032519



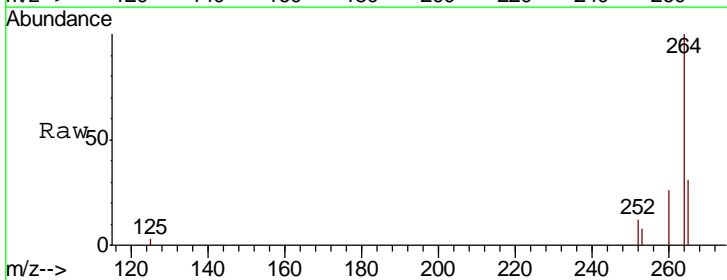
Tgt Ion: 276 Resp: 188806

Ion	Ratio	Lower	Upper
276	100		
138	12.5	12.9	19.3#
277	23.4	18.3	27.5

Manual Integrations
APPROVED
 Sohil
 4/1/2019 5:45:17 PM

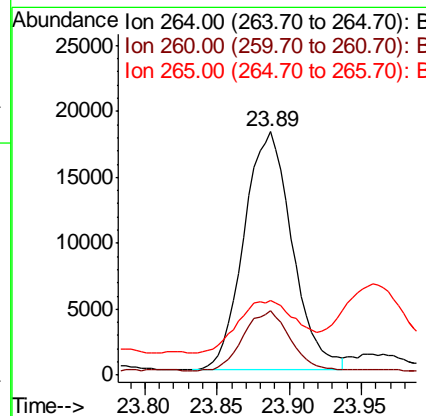
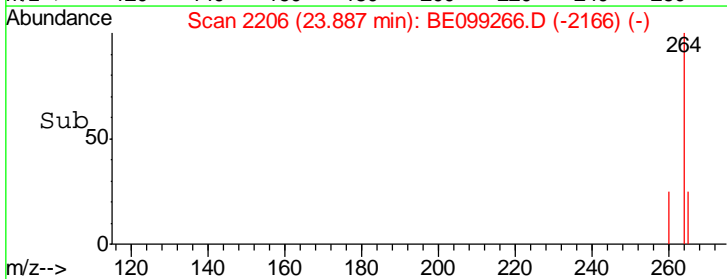


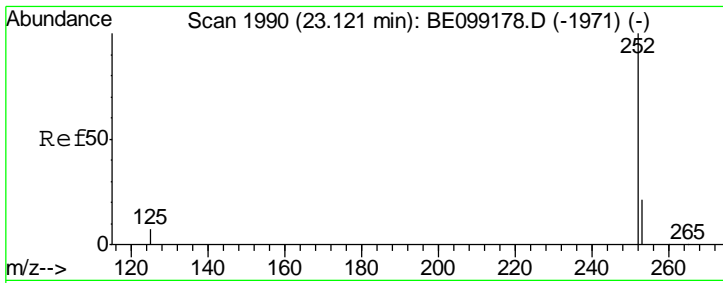
#34
 Perylene-d12
 Concen: 0.400 ng
 RT: 23.89 min Scan# 2206
 Delta R.T. -0.01 min
 Lab File: BE099266.D
 Acq: 29 Mar 2019 23:25



Tgt Ion: 264 Resp: 41219

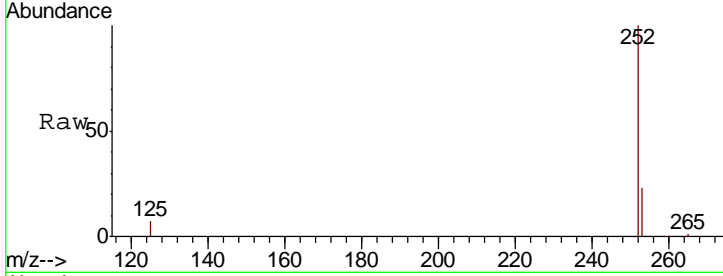
Ion	Ratio	Lower	Upper
264	100		
260	26.4	18.2	27.2
265	30.5	21.8	32.8





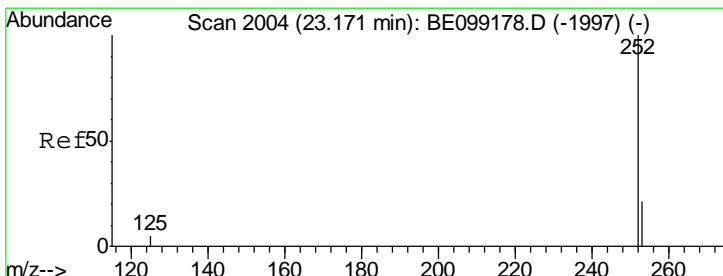
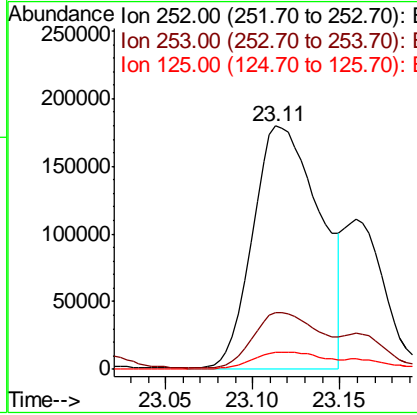
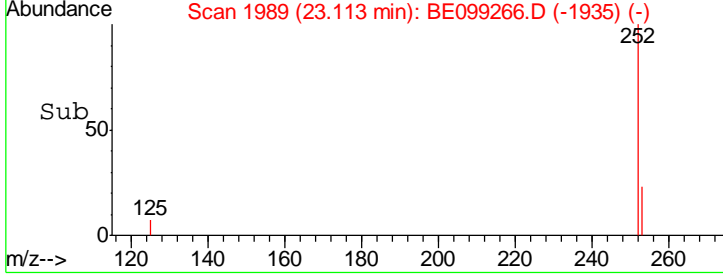
#35
 Benzo(b)fluoranthene
 Concen: 3.515 ng
 RT: 23.11 min Scan# 1989
 Delta R.T. -0.01 min
 Lab File: BE099266.D
 Acq: 29 Mar 2019 23:25

Instrument :
 BNA_E
ClientSampled :
 EXT-027-SW011-032519

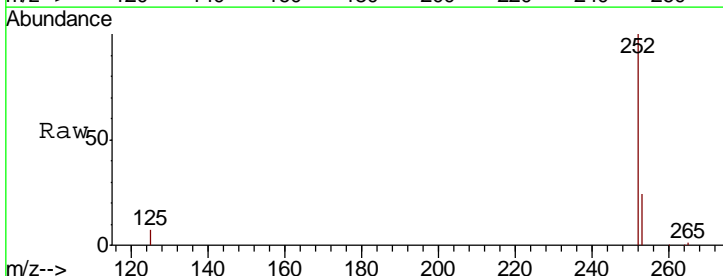


Tgt Ion	Resp	Lower	Upper
252	476733		
253	23.3	17.8	26.8
125	7.0	6.1	9.1

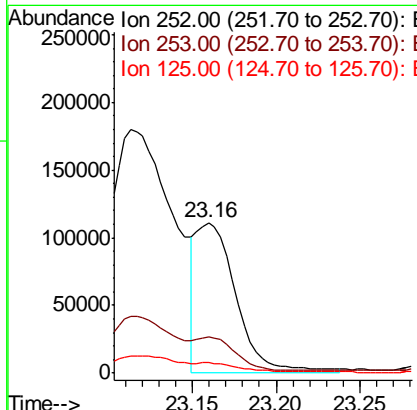
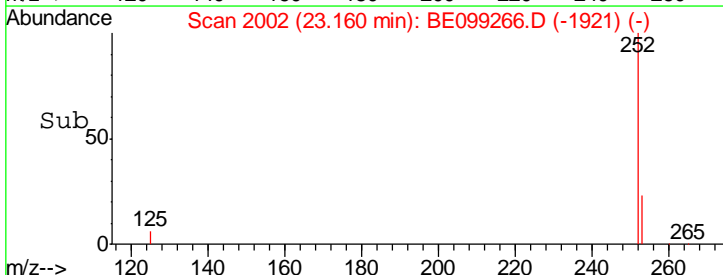
Manual Integrations
APPROVED
 Sohil
 4/1/2019 5:45:17 PM

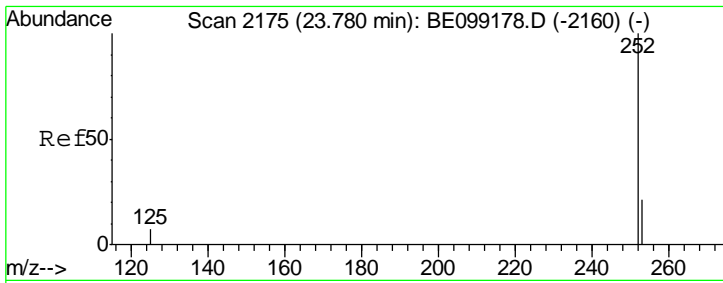


#36
 Benzo(k)fluoranthene
 Concen: 1.308 ng m
 RT: 23.16 min Scan# 2002
 Delta R.T. -0.01 min
 Lab File: BE099266.D
 Acq: 29 Mar 2019 23:25



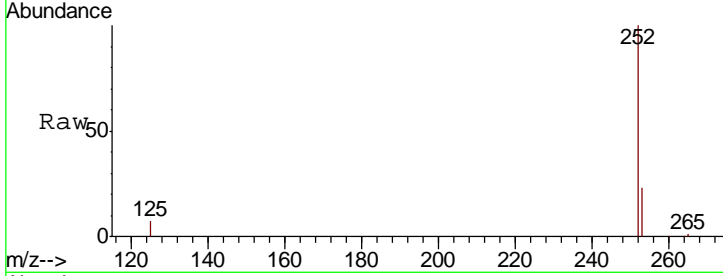
Tgt Ion	Resp	Lower	Upper
252	187580		
253	24.1	17.8	26.6
125	6.7	5.9	8.9





#37
 Benzo(a)pyrene
 Concen: 2.723 ng
 RT: 23.77 min Scan# 2174
 Delta R.T. -0.01 min
 Lab File: BE099266.D
 Acq: 29 Mar 2019 23:25

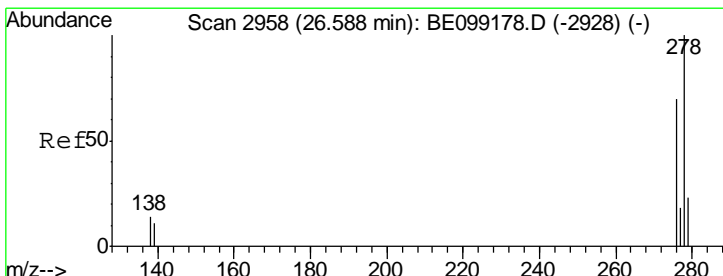
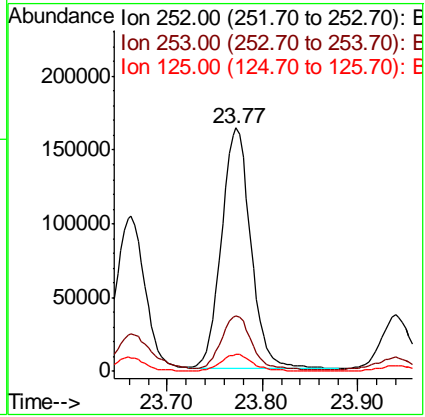
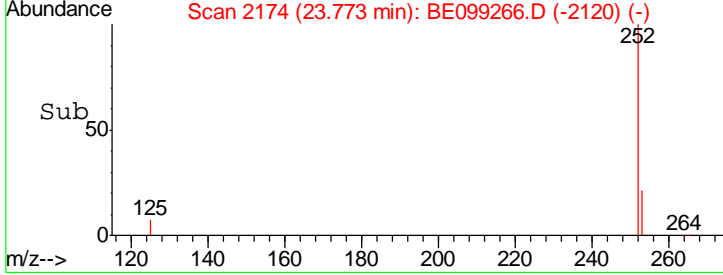
Instrument :
 BNA_E
ClientSampled :
 EXT-027-SW011-032519



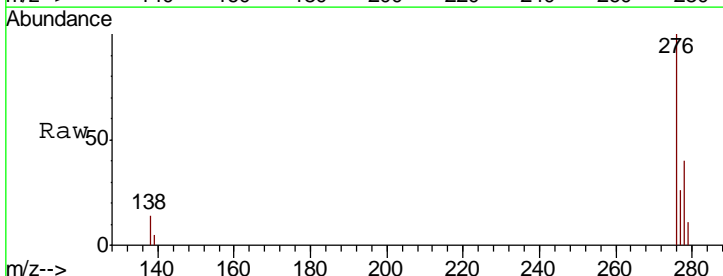
Tgt Ion: 252 Resp: 344976

Ion	Ratio	Lower	Upper
252	100		
253	23.0	18.1	27.1
125	7.0	6.8	10.2

Manual Integrations
APPROVED
 Sohil
 4/1/2019 5:45:17 PM

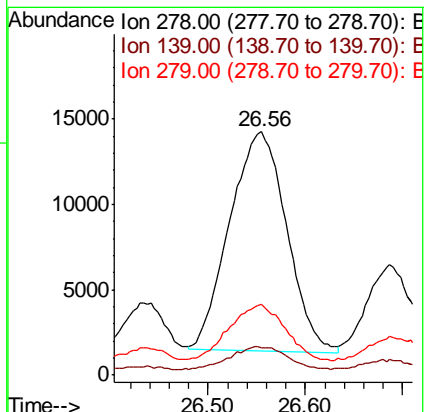
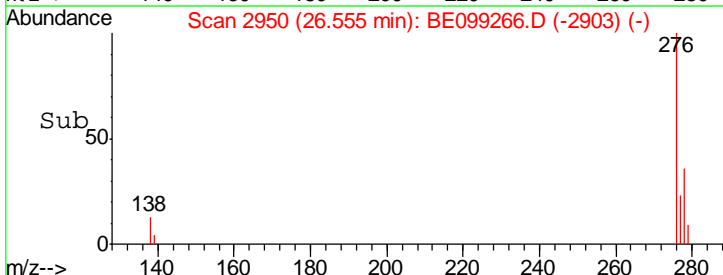


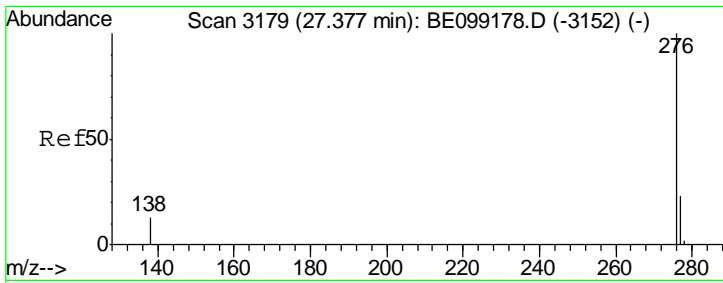
#38
 Dibenzo(a,h)anthracene
 Concen: 0.465 ng
 RT: 26.56 min Scan# 2950
 Delta R.T. -0.03 min
 Lab File: BE099266.D
 Acq: 29 Mar 2019 23:25



Tgt Ion: 278 Resp: 52352

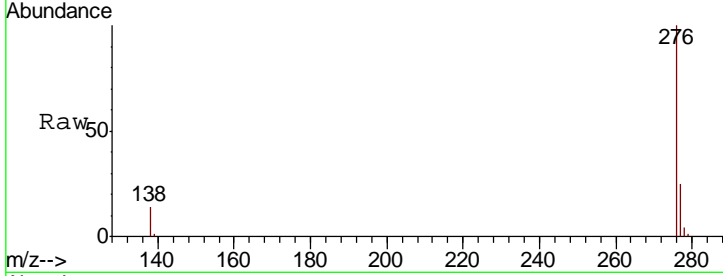
Ion	Ratio	Lower	Upper
278	100		
139	11.4	9.5	14.3
279	29.0	19.1	28.7#





#39
 Benzo(g,h,i)perylene
 Concen: 1.549 ng
 RT: 27.36 min Scan# 3175
 Delta R.T. -0.02 min
 Lab File: BE099266.D
 Acq: 29 Mar 2019 23:25

Instrument :
 BNA_E
ClientSampled :
 EXT-027-SW011-032519



Tgt Ion: 276 Resp: 174789

Ion	Ratio	Lower	Upper
276	100		
277	24.6	19.0	28.4
138	13.6	11.1	16.7

Manual Integrations
APPROVED
 Sohil
 4/1/2019 5:45:17 PM

