

Data Path : Z:\SVOASRV\HPCHEM1\BNA\_E\DATA\BE032919\  
 Data File : BE099267.D  
 Acq On : 30 Mar 2019 00:01  
 Operator : JU/SJ  
 Sample : K1982-11  
 Misc :  
 ALS Vial : 19 Sample Multiplier: 1

**Instrument :**  
 BNA\_E  
**ClientSampled :**  
 EXT-027-SW014-032519

**Manual Integrations**  
**APPROVED**  
 Sohil  
 4/1/2019 5:45:18 PM

Quant Time: Mar 30 00:37:10 2019  
 Quant Method : Z:\SVOASRV\HPCHEM1\BNA\_E\METHODS\8270-SIM-BE032519.M  
 Quant Title : ASP BNA STANDARDS FOR 5 POINT CALIBRATION  
 QLast Update : Tue Mar 26 07:02:06 2019  
 Response via : Initial Calibration

Internal Standards	R.T.	QIon	Response	Conc	Units	Dev(Min)
1) 1,4-Dichlorobenzene-d4	7.83	152	3575	0.40	ng	-0.01
7) Naphthalene-d8	10.63	136	14811	0.40	ng	0.00
13) Acenaphthene-d10	14.47	164	11756	0.40	ng	-0.01
19) Phenanthrene-d10	17.20	188	32553	0.40	ng	-0.01
27) Chrysene-d12	21.38	240	40233	0.40	ng	-0.01
34) Perylene-d12	23.88	264	39833	0.40	ng	0.00

System Monitoring Compounds	R.T.	QIon	Response	Conc	Units	Dev(Min)
4) 2-Fluorophenol	5.41	112	2829	0.27	ng	0.00
5) Phenol-d6	6.99	99	4155	0.25	ng	0.00
8) Nitrobenzene-d5	8.98	82	3282	0.27	ng	-0.01
11) 2-Methylnaphthalene-d10	12.21	152	7294	0.26	ng	-0.01
14) 2,4,6-Tribromophenol	15.96	330	1563	0.46	ng	0.00
15) 2-Fluorobiphenyl	13.10	172	10423	0.22	ng	0.00
25) Fluoranthene-d10	19.23	212	93260	0.24	ng	-0.01
29) Terphenyl-d14	19.83	244	15248	0.17	ng	0.00

Target Compounds	R.T.	QIon	Response	Conc	Units	Qvalue
9) Naphthalene	10.67	128	9969	0.057	ng	# 97
12) 2-Methylnaphthalene	12.28	142	1713	0.055	ng	# 91
16) Acenaphthylene	14.20	152	9644	0.161	ng	98
17) Acenaphthene	14.53	154	3444	0.096	ng	99
18) Fluorene	15.50	166	5669	0.112	ng	# 94
23) Phenanthrene	17.24	178	201041	2.103	ng	100
24) Anthracene	17.33	178	37147	0.430	ng	97
26) Fluoranthene	19.27	202	556975	4.566	ng	98
28) Pyrene	19.62	202	540544	4.044	ng	# 95
30) Benzo(a)anthracene	21.35	228	335803	2.529	ng	97
31) Chrysene	21.41	228	293420	2.068	ng	97
32) Bis(2-ethylhexyl)phthalate	21.28	149	47091	0.297	ng	99
33) Indeno(1,2,3-cd)pyrene	26.54	276	147585	1.099	ng	# 96
35) Benzo(b)fluoranthene	23.11	252	333921	2.547	ng	98
36) Benzo(k)fluoranthene	23.16	252	127594m	0.921	ng	
37) Benzo(a)pyrene	23.77	252	250084	2.043	ng	98
38) Dibenzo(a,h)anthracene	26.56	278	37451	0.344	ng	# 90
39) Benzo(g,h,i)perylene	27.36	276	146877	1.347	ng	98

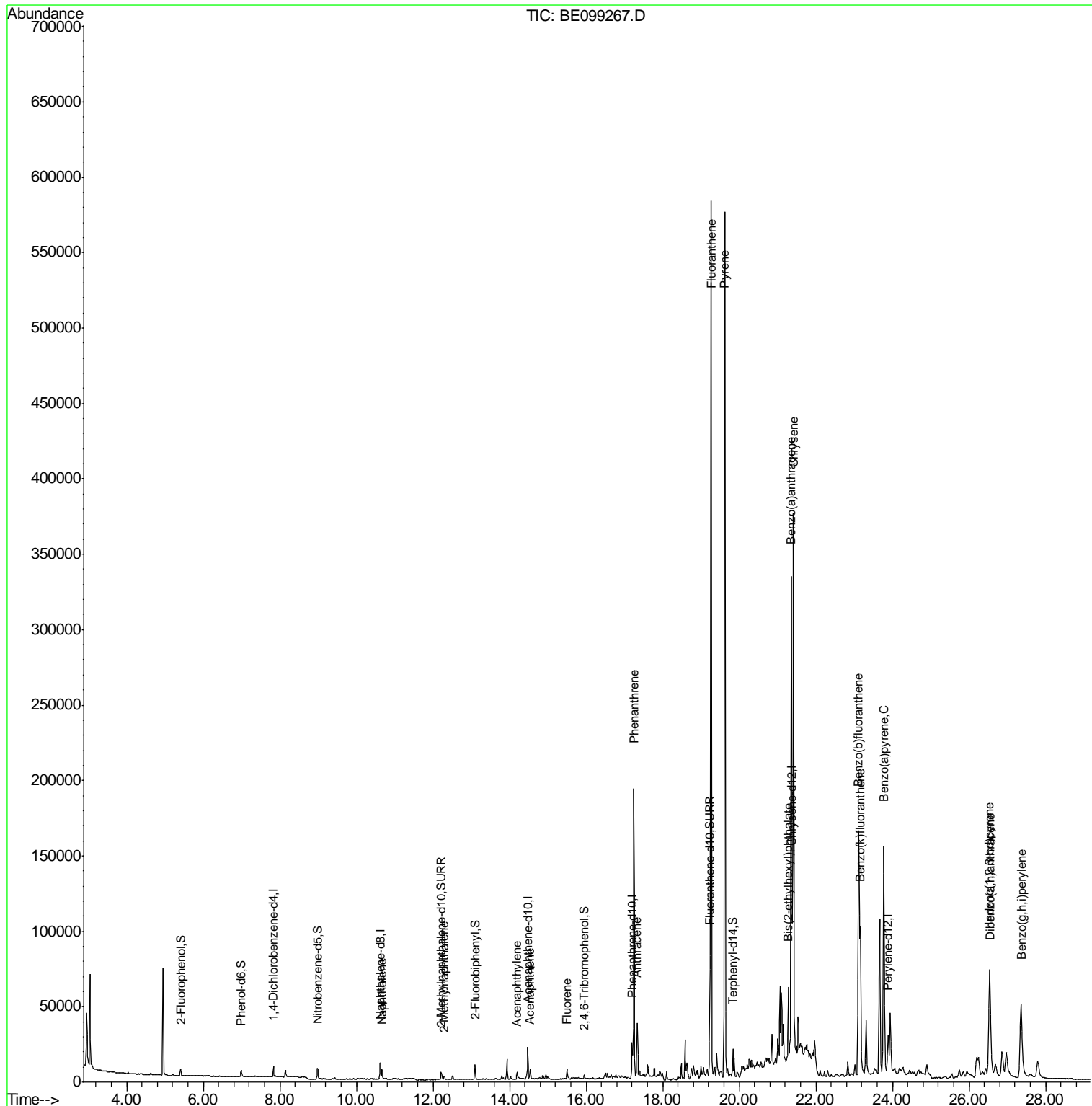
(#) = qualifier out of range (m) = manual integration (+) = signals summed

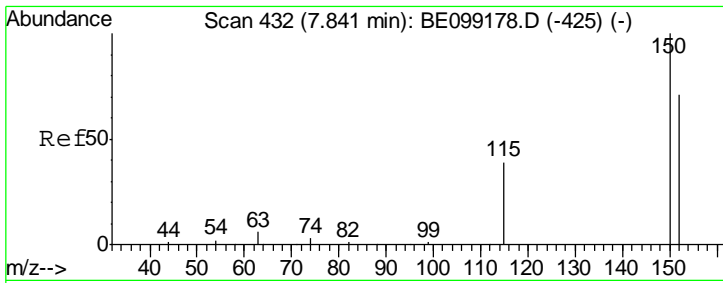
Data Path : Z:\SVOASRV\HPCHEM1\BNA\_E\DATA\BE032919\  
 Data File : BE099267.D  
 Acq On : 30 Mar 2019 00:01  
 Operator : JU/SJ  
 Sample : K1982-11  
 Misc :  
 ALS Vial : 19 Sample Multiplier: 1

Instrument :  
 BNA\_E  
 Client Sampled :  
 EXT-027-SW014-032519

Manual Integrations  
 APPROVED  
 Sohil  
 4/1/2019 5:45:18 PM

Quant Time: Mar 30 00:37:10 2019  
 Quant Method : Z:\SVOASRV\HPCHEM1\BNA\_E\METHODS\8270-SIM-BE032519.M  
 Quant Title : ASP BNA STANDARDS FOR 5 POINT CALIBRATION  
 QLast Update : Tue Mar 26 07:02:06 2019  
 Response via : Initial Calibration





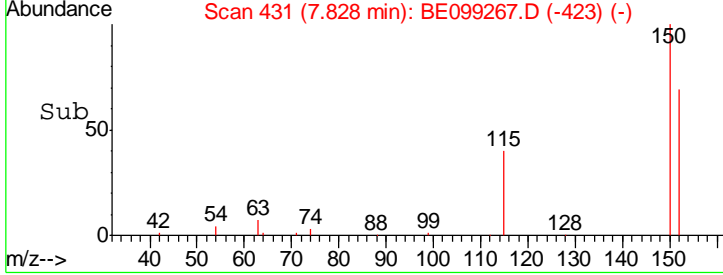
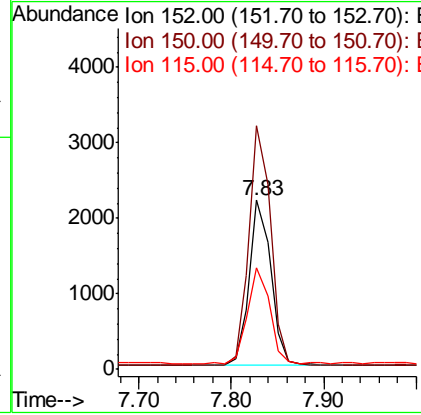
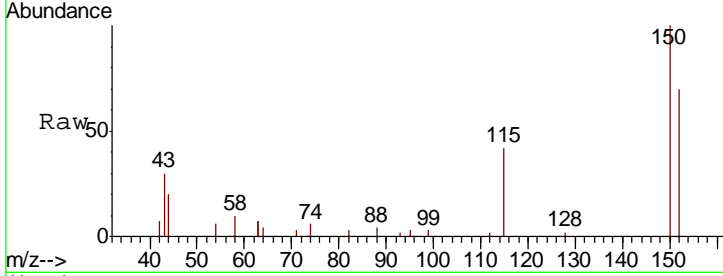
#1  
 1,4-Dichlorobenzene-d4  
 Concen: 0.400 ng  
 RT: 7.83 min Scan# 431  
 Delta R.T. -0.01 min  
 Lab File: BE099267.D  
 Acq: 30 Mar 2019 00:01

**Instrument :**  
 BNA\_E  
**ClientSampled :**  
 EXT-027-SW014-032519

Tgt Ion	Resp	Lower	Upper
152	3575		
152	100		
150	143.8	112.8	169.2
115	60.3	45.1	67.7

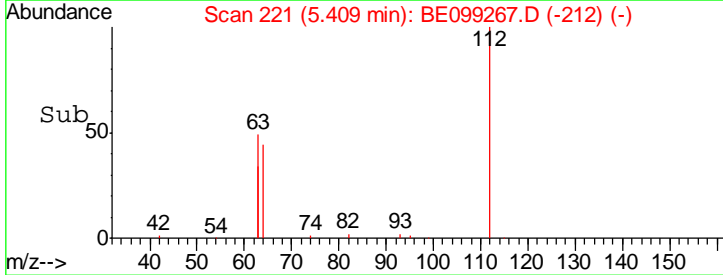
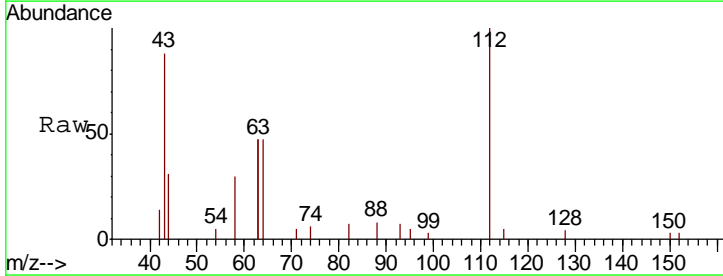
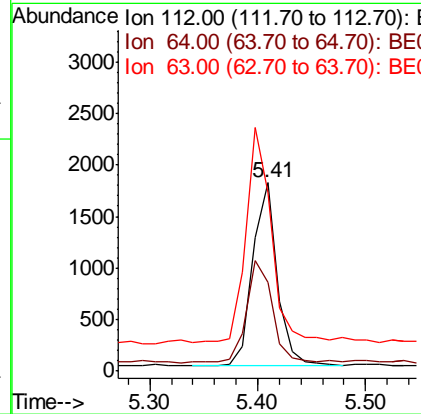
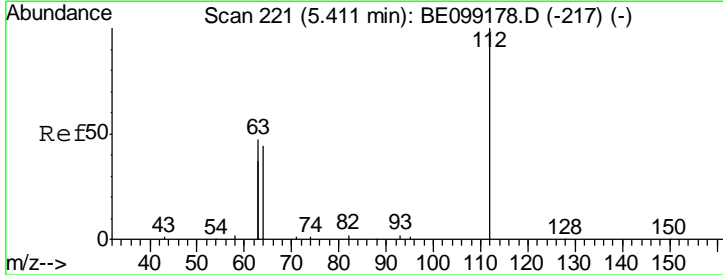
**Manual Integrations**  
**APPROVED**

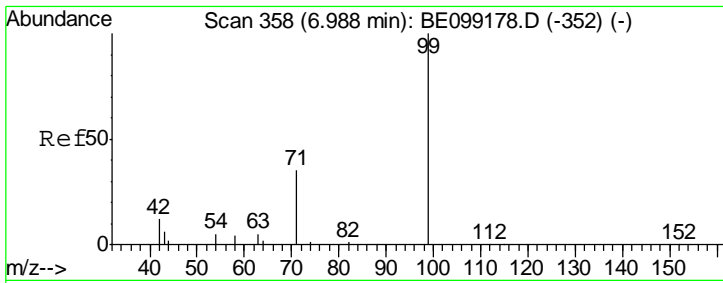
Sohil  
 4/1/2019 5:45:18 PM



#4  
 2-Fluorophenol  
 Concen: 0.265 ng  
 RT: 5.41 min Scan# 221  
 Delta R.T. -0.00 min  
 Lab File: BE099267.D  
 Acq: 30 Mar 2019 00:01

Tgt Ion	Resp	Lower	Upper
112	2829		
112	100		
64	58.6	46.2	69.2
63	118.5	89.9	134.9





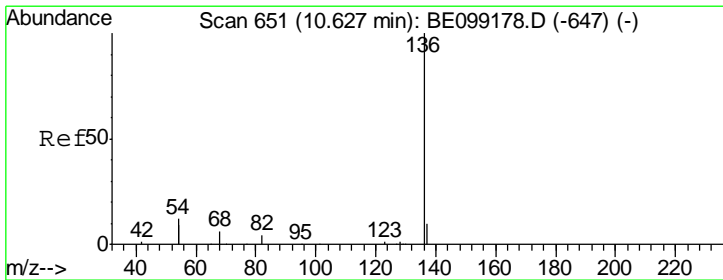
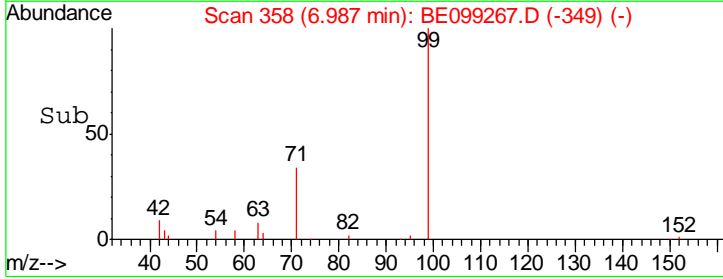
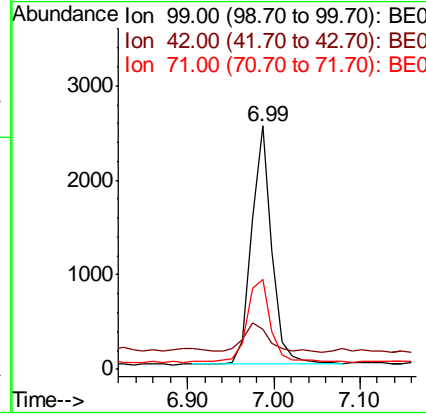
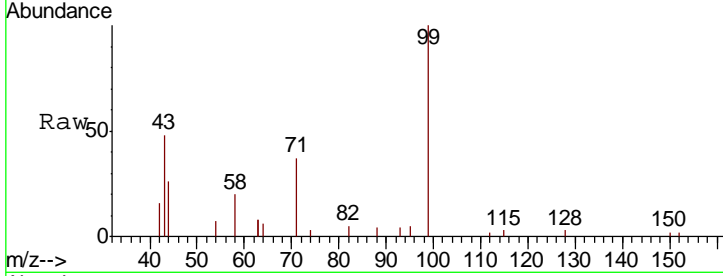
#5  
 Phenol-d6  
 Concen: 0.255 ng  
 RT: 6.99 min Scan# 358  
 Delta R.T. -0.00 min  
 Lab File: BE099267.D  
 Acq: 30 Mar 2019 00:01

**Instrument :**  
 BNA\_E  
**ClientSampled :**  
 EXT-027-SW014-032519

Tgt Ion	Resp	Lower	Upper
99	4155		
99	100		
42	14.7	12.4	18.6
71	40.0	28.4	42.6

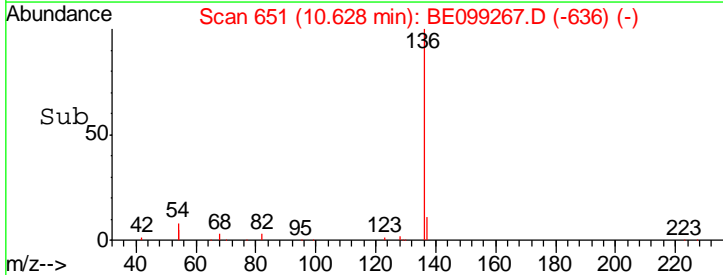
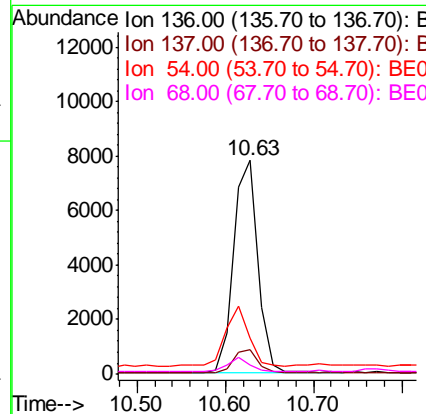
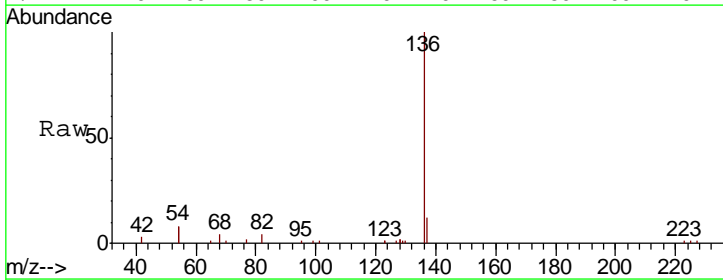
**Manual Integrations**  
**APPROVED**

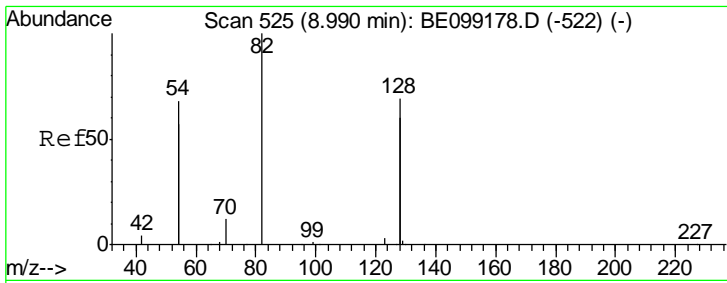
Sohil  
 4/1/2019 5:45:18 PM



#7  
 Naphthalene-d8  
 Concen: 0.400 ng  
 RT: 10.63 min Scan# 651  
 Delta R.T. 0.00 min  
 Lab File: BE099267.D  
 Acq: 30 Mar 2019 00:01

Tgt Ion	Resp	Lower	Upper
136	14811		
136	100		
137	11.7	8.7	13.1
54	16.8	18.7	28.1#
68	4.3	5.2	7.8#





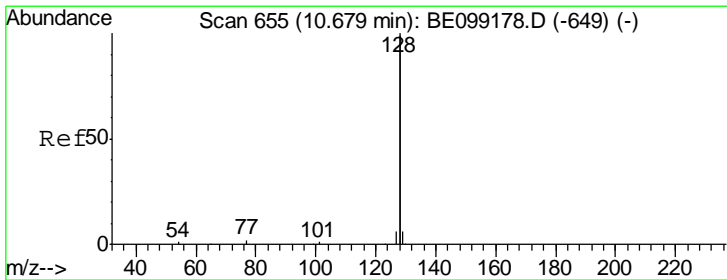
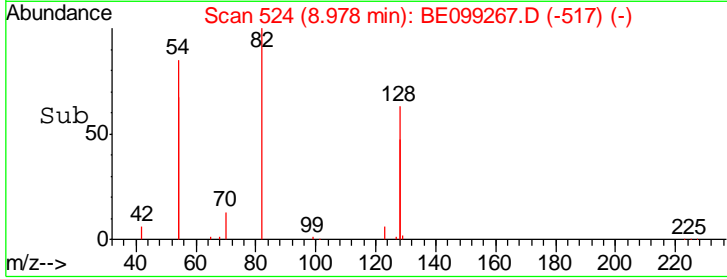
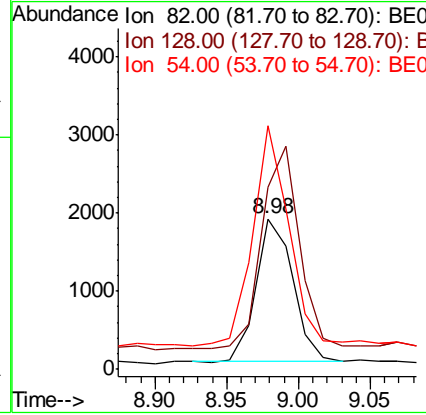
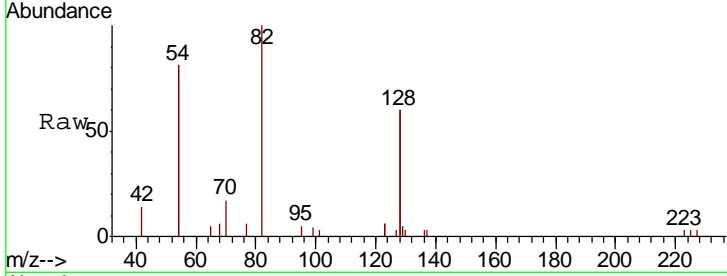
#8  
 Nitrobenzene-d5  
 Concen: 0.271 ng  
 RT: 8.98 min Scan# 524  
 Delta R.T. -0.01 min  
 Lab File: BE099267.D  
 Acq: 30 Mar 2019 00:01

**Instrument :**  
 BNA\_E  
**ClientSampled :**  
 EXT-027-SW014-032519

Tgt Ion	Resp	Lower	Upper
82	100		
128	121.0	107.5	161.3
54	162.1	106.3	159.5#

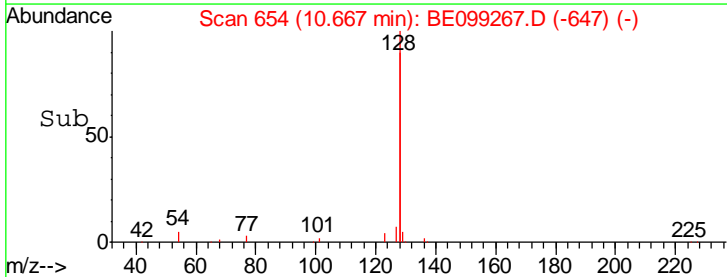
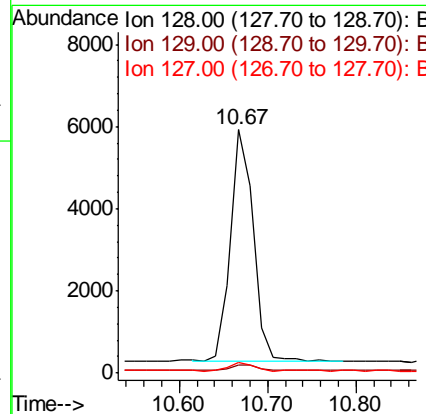
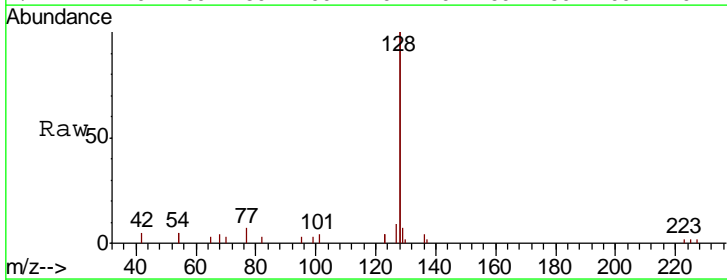
**Manual Integrations**  
**APPROVED**

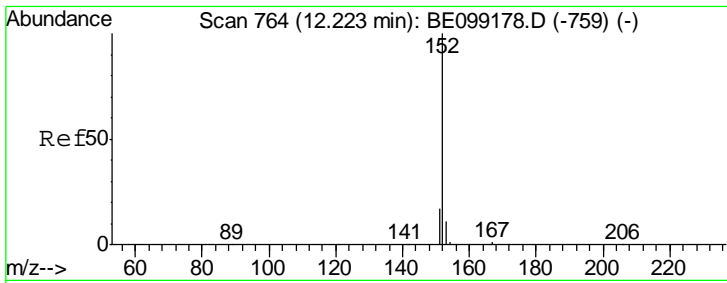
Sohil  
 4/1/2019 5:45:18 PM



#9  
 Naphthalene  
 Concen: 0.057 ng  
 RT: 10.67 min Scan# 654  
 Delta R.T. -0.01 min  
 Lab File: BE099267.D  
 Acq: 30 Mar 2019 00:01

Tgt Ion	Resp	Lower	Upper
128	100		
129	3.5	2.3	3.5#
127	4.3	2.6	3.8#





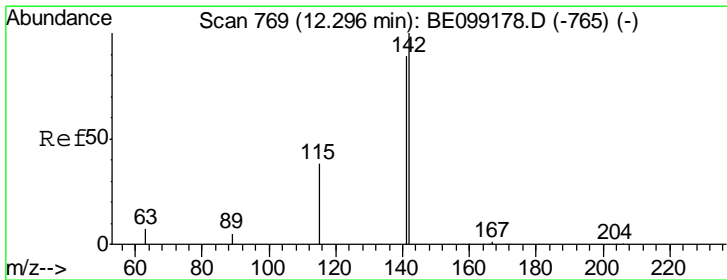
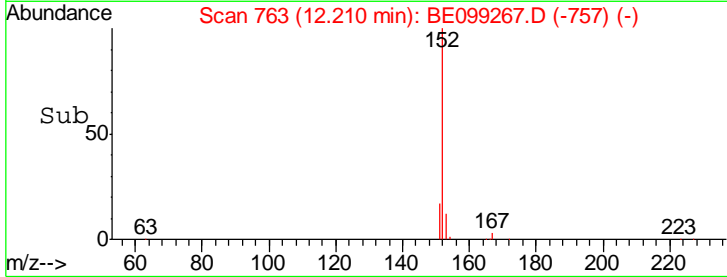
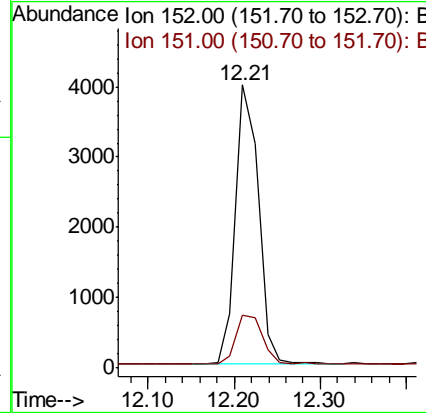
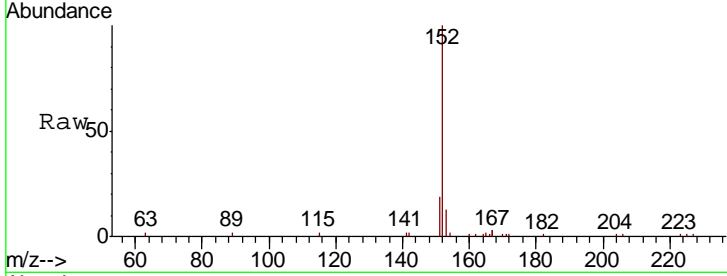
#11  
 2-Methylnaphthalene-d10  
 Concen: 0.256 ng  
 RT: 12.21 min Scan# 763  
 Delta R.T. -0.01 min  
 Lab File: BE099267.D  
 Acq: 30 Mar 2019 00:01

**Instrument :**  
 BNA\_E  
**ClientSampled :**  
 EXT-027-SW014-032519

Tgt Ion	Resp	Lower	Upper
152	100		
151	20.4	15.0	22.6

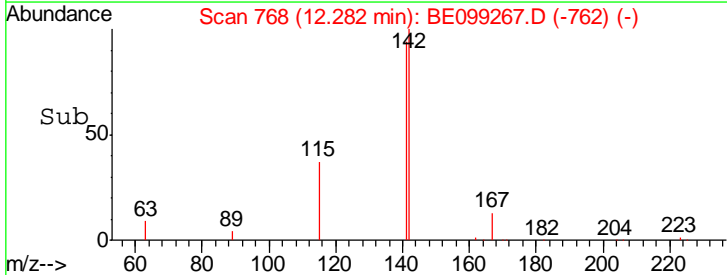
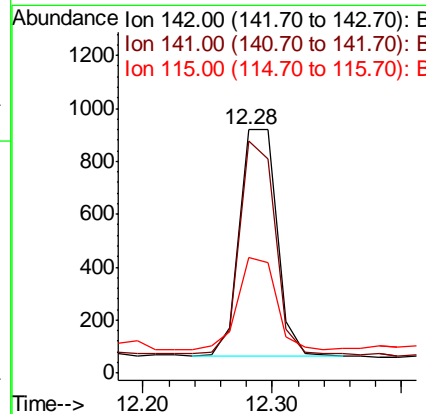
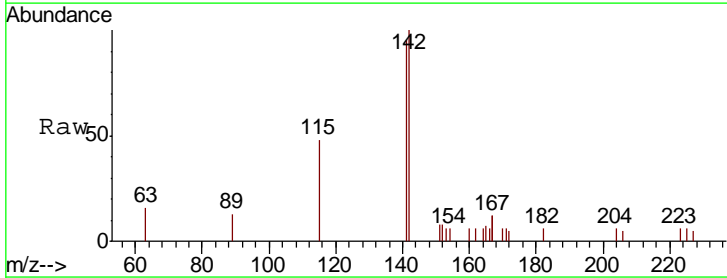
**Manual Integrations**  
**APPROVED**

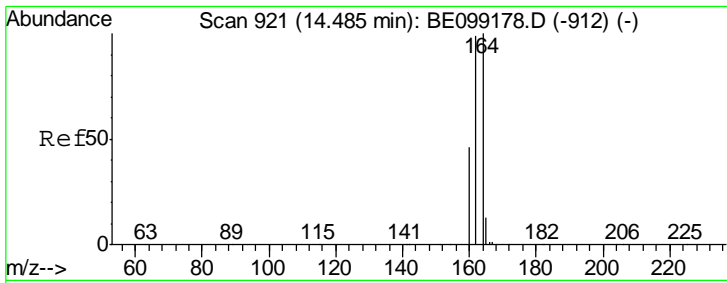
Sohil  
 4/1/2019 5:45:18 PM



#12  
 2-Methylnaphthalene  
 Concen: 0.055 ng  
 RT: 12.28 min Scan# 768  
 Delta R.T. -0.01 min  
 Lab File: BE099267.D  
 Acq: 30 Mar 2019 00:01

Tgt Ion	Resp	Lower	Upper
142	100		
141	95.4	71.3	106.9
115	47.5	30.4	45.6#



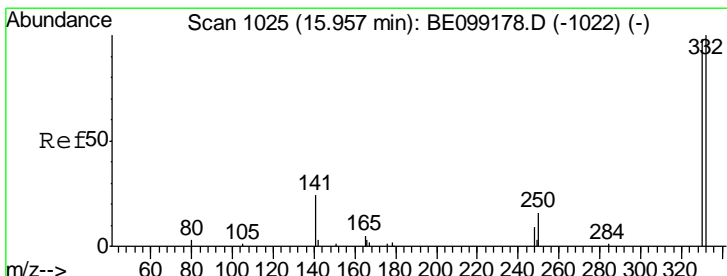
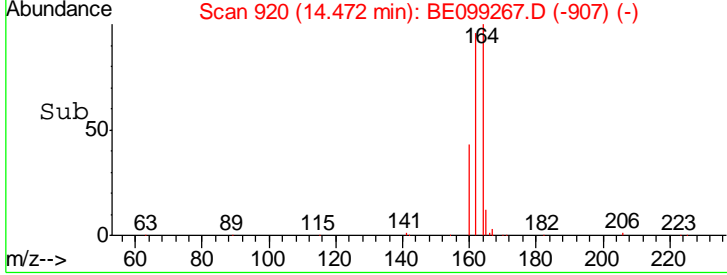
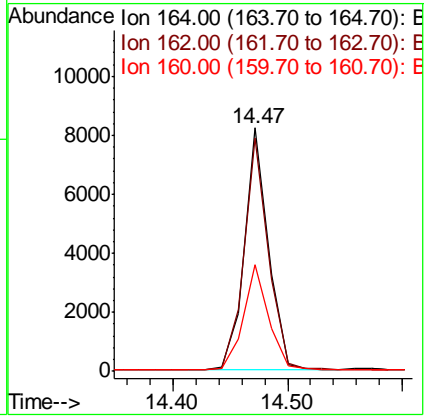
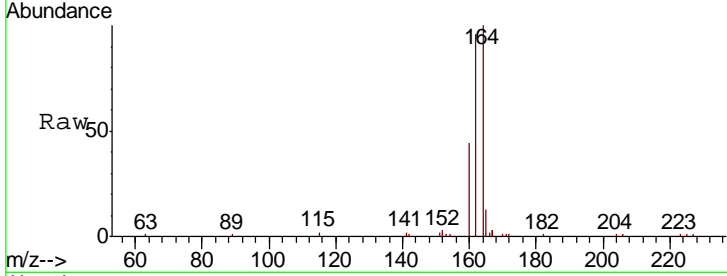


#13  
 Acenaphthene-d10  
 Concen: 0.400 ng  
 RT: 14.47 min Scan# 920  
 Delta R.T. -0.01 min  
 Lab File: BE099267.D  
 Acq: 30 Mar 2019 00:01

**Instrument :**  
 BNA\_E  
**ClientSampled :**  
 EXT-027-SW014-032519

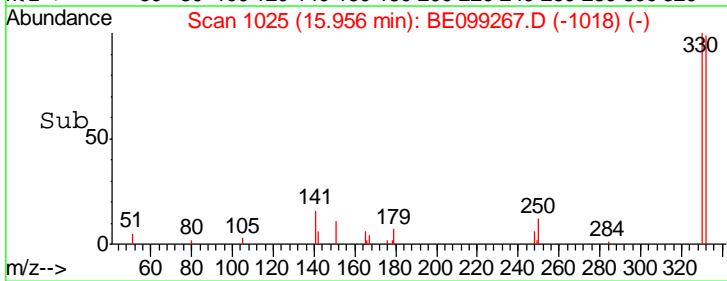
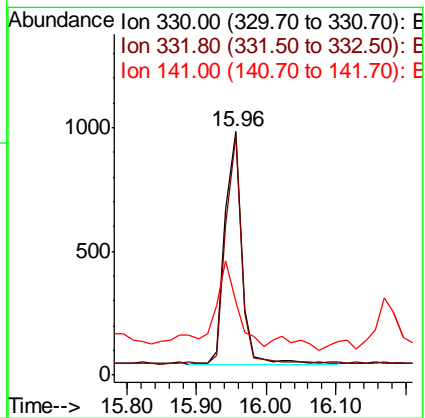
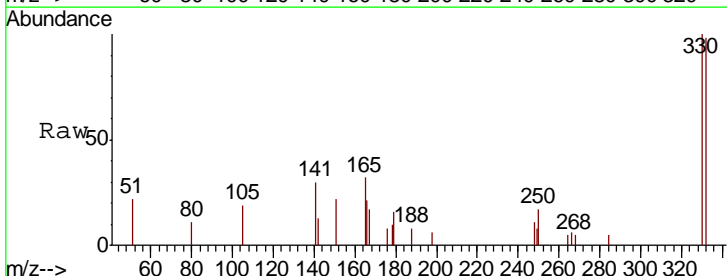
Tgt Ion	Resp	Lower	Upper
164	11756		
162	95.6	79.2	118.8
160	44.0	36.7	55.1

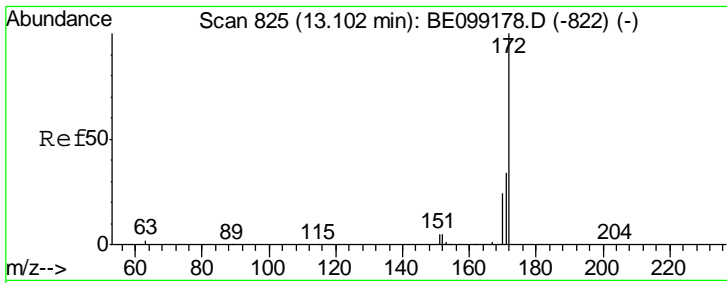
**Manual Integrations**  
**APPROVED**  
 Sohil  
 4/1/2019 5:45:18 PM



#14  
 2,4,6-Tribromophenol  
 Concen: 0.463 ng  
 RT: 15.96 min Scan# 1025  
 Delta R.T. -0.00 min  
 Lab File: BE099267.D  
 Acq: 30 Mar 2019 00:01

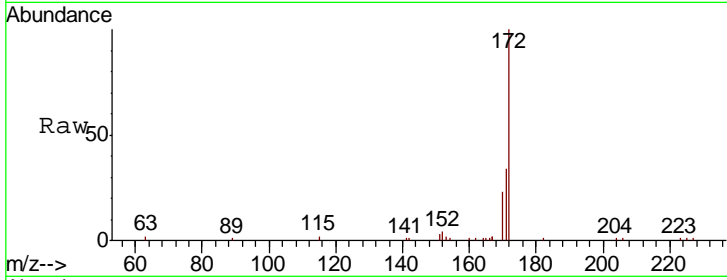
Tgt Ion	Resp	Lower	Upper
330	1563		
332	93.0	71.3	106.9
141	50.4	21.7	32.5#





#15  
 2-Fluorobiphenyl  
 Concen: 0.217 ng  
 RT: 13.10 min Scan# 825  
 Delta R.T. 0.00 min  
 Lab File: BE099267.D  
 Acq: 30 Mar 2019 00:01

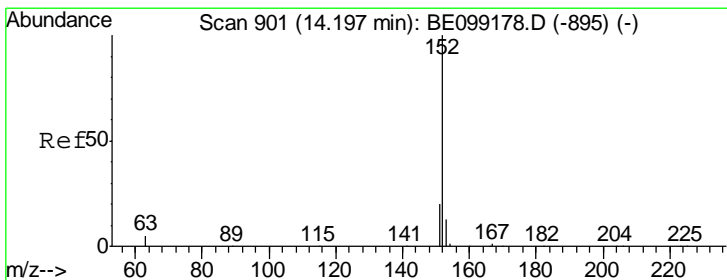
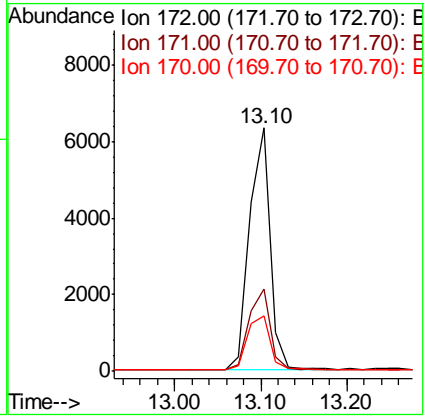
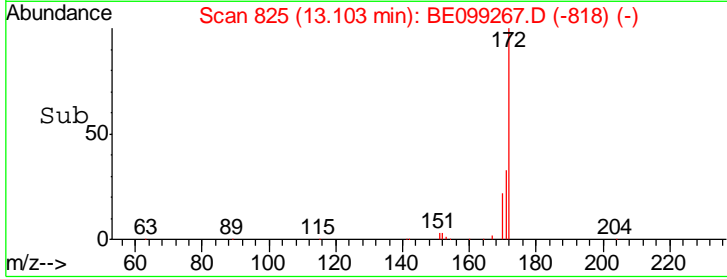
**Instrument :**  
 BNA\_E  
**ClientSampled :**  
 EXT-027-SW014-032519



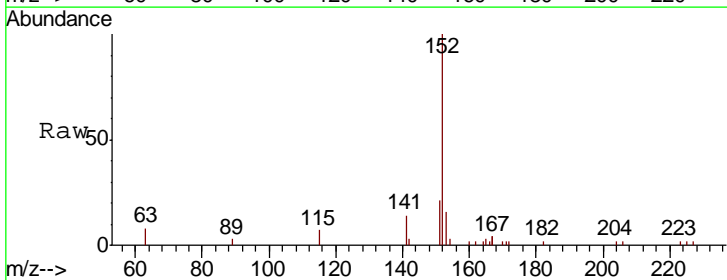
Tgt Ion: 172 Resp: 10423

Ion	Ratio	Lower	Upper
172	100		
171	33.9	27.4	41.0
170	22.9	19.1	28.7

**Manual Integrations**  
**APPROVED**  
 Sohil  
 4/1/2019 5:45:18 PM

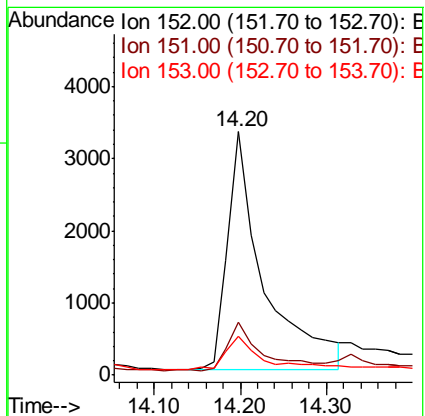
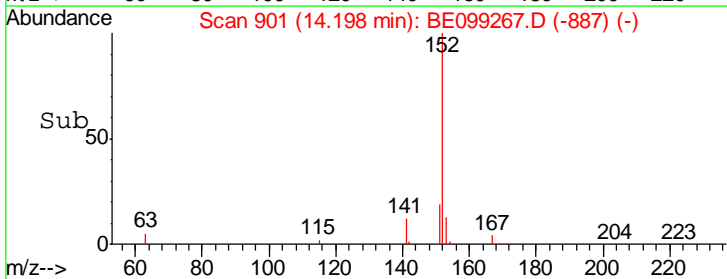


#16  
 Acenaphthylene  
 Concen: 0.161 ng  
 RT: 14.20 min Scan# 901  
 Delta R.T. 0.00 min  
 Lab File: BE099267.D  
 Acq: 30 Mar 2019 00:01

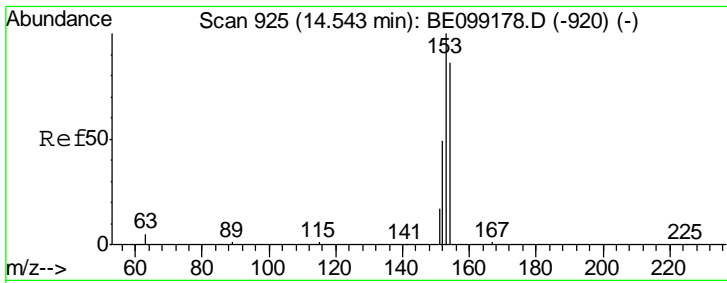


Tgt Ion: 152 Resp: 9644

Ion	Ratio	Lower	Upper
152	100		
151	20.2	15.7	23.5
153	14.4	10.6	15.8





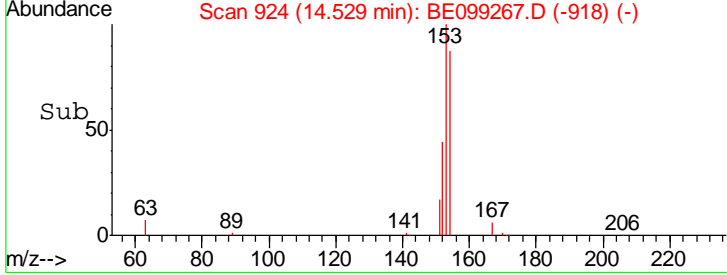
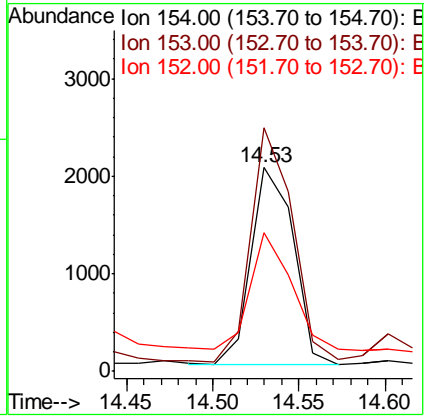
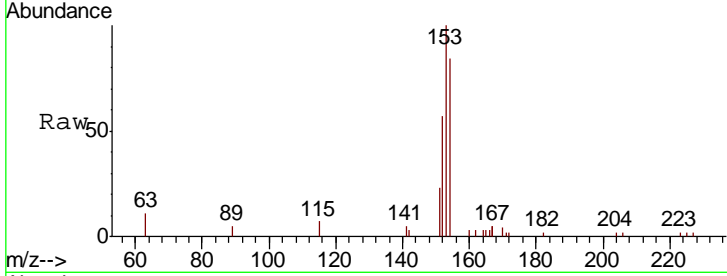


#17  
 Acenaphthene  
 Concen: 0.096 ng  
 RT: 14.53 min Scan# 924  
 Delta R.T. -0.01 min  
 Lab File: BE099267.D  
 Acq: 30 Mar 2019 00:01

**Instrument :**  
 BNA\_E  
**ClientSampled :**  
 EXT-027-SW014-032519

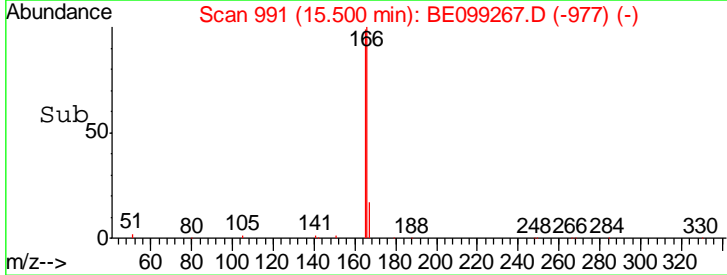
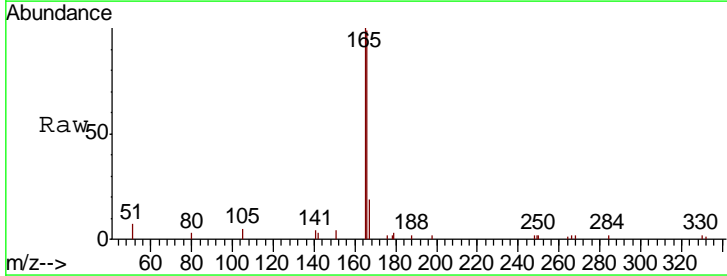
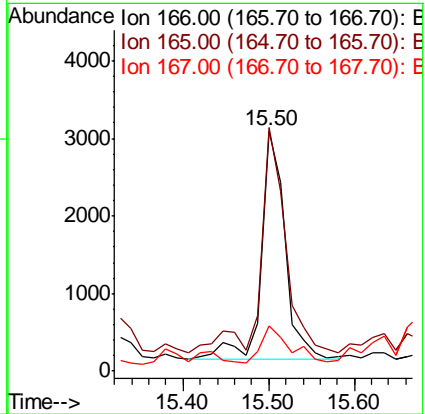
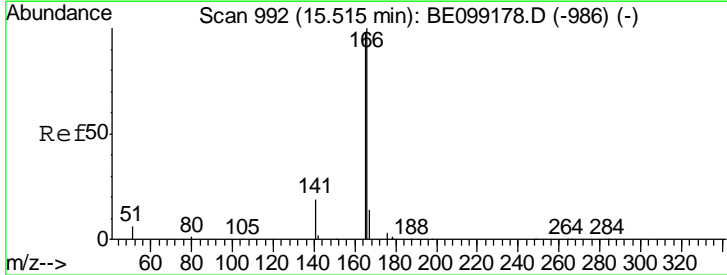
Tgt Ion	Resp	Lower	Upper
154	100		
153	116.2	93.4	140.0
152	56.3	46.6	69.8

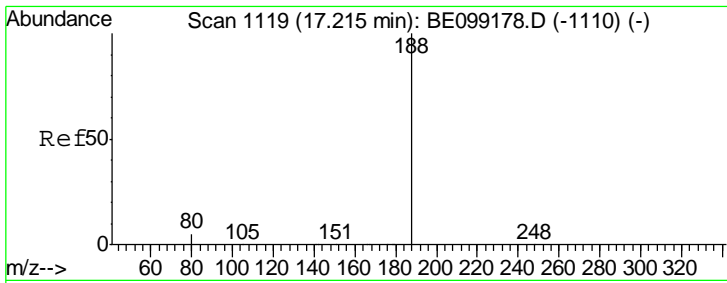
**Manual Integrations**  
**APPROVED**  
 Sohil  
 4/1/2019 5:45:18 PM



#18  
 Fluorene  
 Concen: 0.112 ng  
 RT: 15.50 min Scan# 991  
 Delta R.T. -0.01 min  
 Lab File: BE099267.D  
 Acq: 30 Mar 2019 00:01

Tgt Ion	Resp	Lower	Upper
166	100		
165	104.1	78.9	118.3
167	18.9	10.9	16.3#





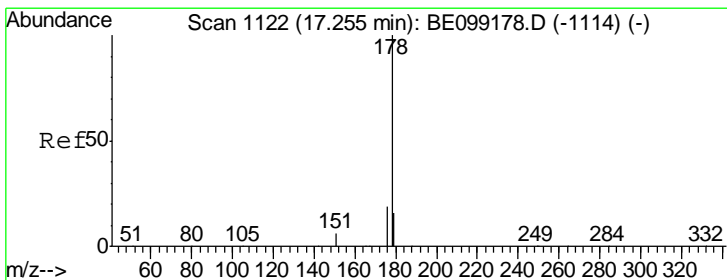
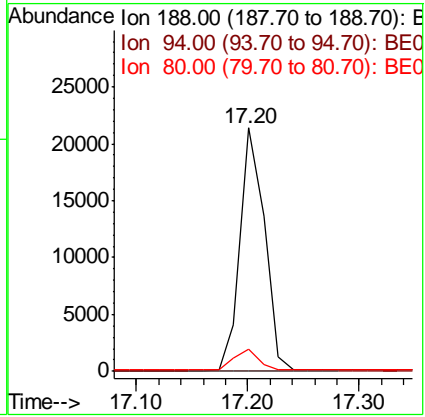
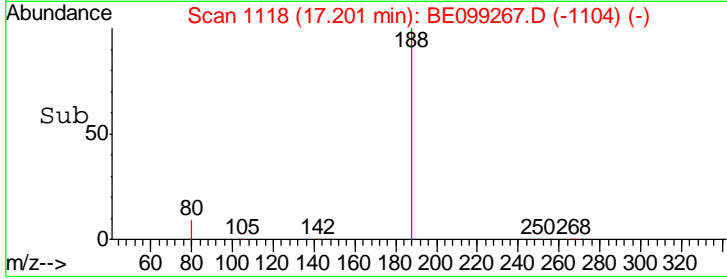
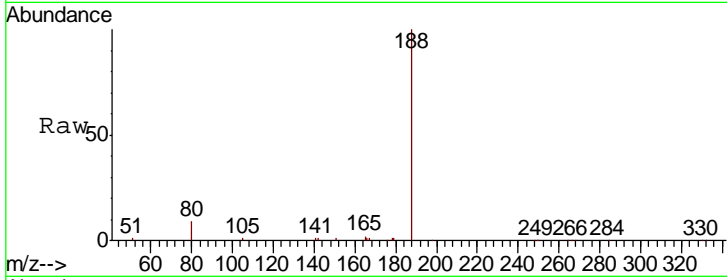
#19  
 Phenanthrene-d10  
 Concen: 0.400 ng  
 RT: 17.20 min Scan# 1118  
 Delta R.T. -0.01 min  
 Lab File: BE099267.D  
 Acq: 30 Mar 2019 00:01

**Instrument :**  
 BNA\_E  
**ClientSampled :**  
 EXT-027-SW014-032519

Tgt Ion	Ratio	Lower	Upper
188	100		
94	0.0	0.0	0.0
80	9.3	4.5	6.7#

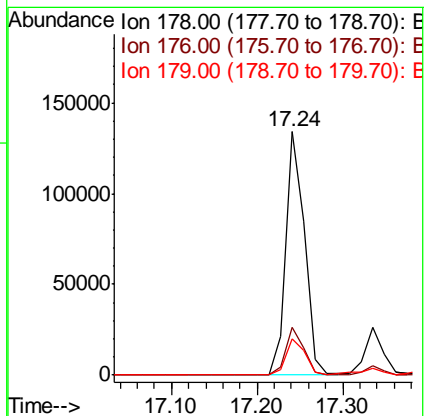
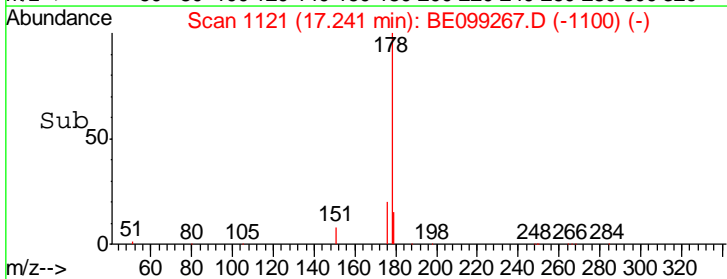
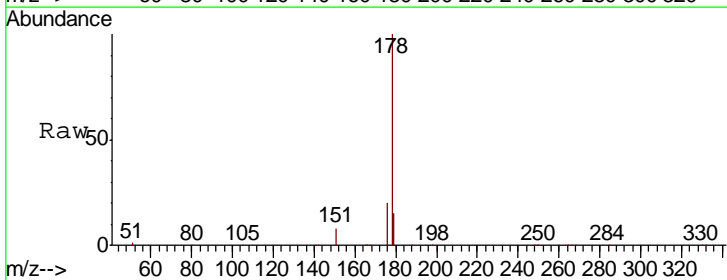
**Manual Integrations**  
**APPROVED**

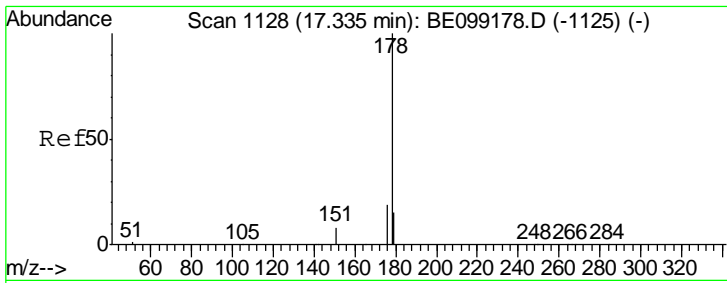
Sohil  
 4/1/2019 5:45:18 PM



#23  
 Phenanthrene  
 Concen: 2.103 ng  
 RT: 17.24 min Scan# 1121  
 Delta R.T. -0.01 min  
 Lab File: BE099267.D  
 Acq: 30 Mar 2019 00:01

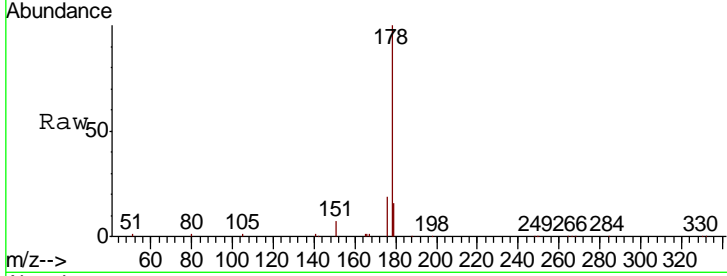
Tgt Ion	Ratio	Lower	Upper
178	100		
176	19.3	15.4	23.2
179	15.3	12.3	18.5





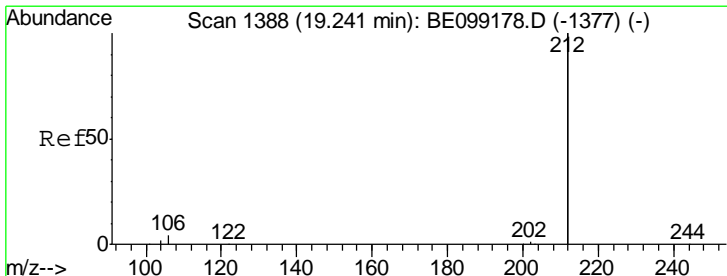
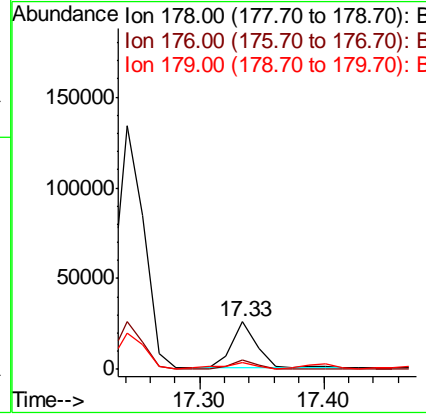
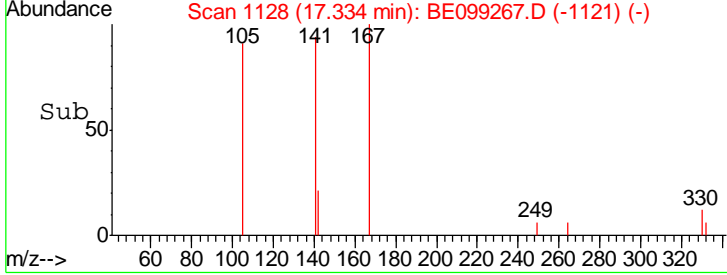
#24  
 Anthracene  
 Concen: 0.430 ng  
 RT: 17.33 min Scan# 1128  
 Delta R.T. -0.00 min  
 Lab File: BE099267.D  
 Acq: 30 Mar 2019 00:01

Instrument :  
 BNA\_E  
 ClientSampled :  
 EXT-027-SW014-032519



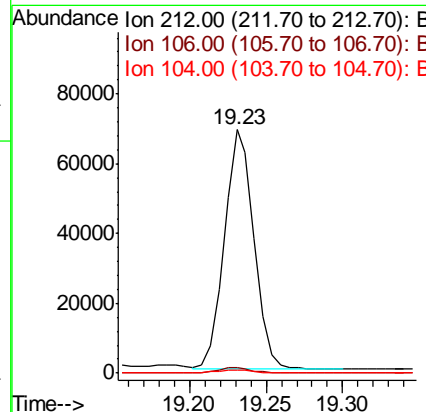
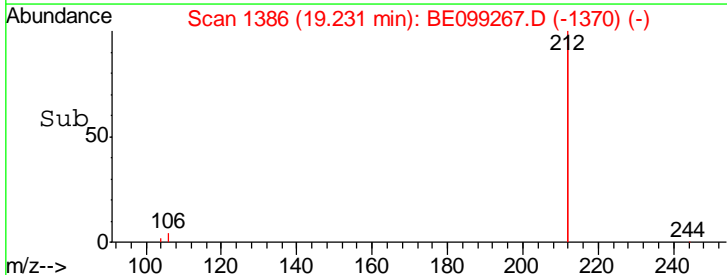
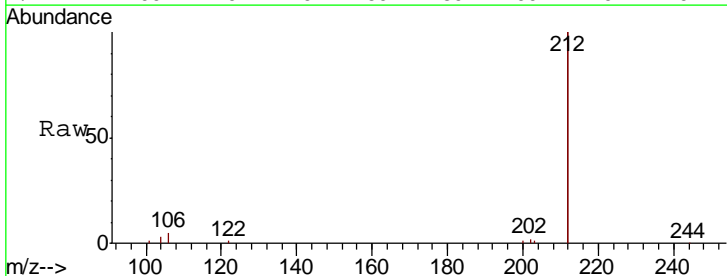
Tgt Ion	Resp	Lower	Upper
178	100		
176	18.4	15.1	22.7
179	18.0	12.4	18.6

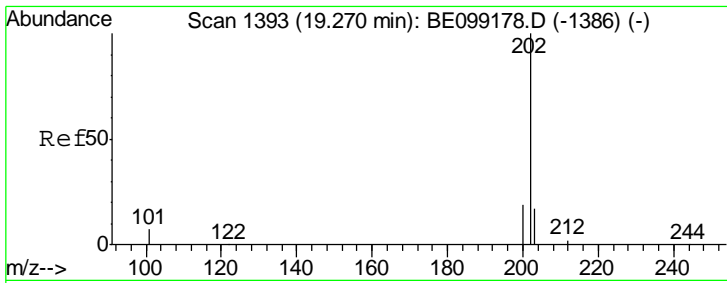
Manual Integrations  
**APPROVED**  
 Sohil  
 4/1/2019 5:45:18 PM



#25  
 Fluoranthene-d10  
 Concen: 0.236 ng  
 RT: 19.23 min Scan# 1386  
 Delta R.T. -0.01 min  
 Lab File: BE099267.D  
 Acq: 30 Mar 2019 00:01

Tgt Ion	Resp	Lower	Upper
212	100		
106	2.2	1.8	2.8
104	1.2	1.1	1.7





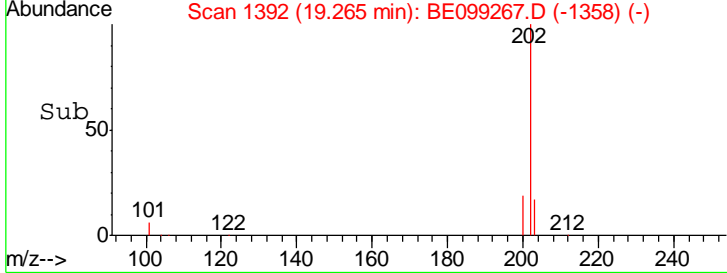
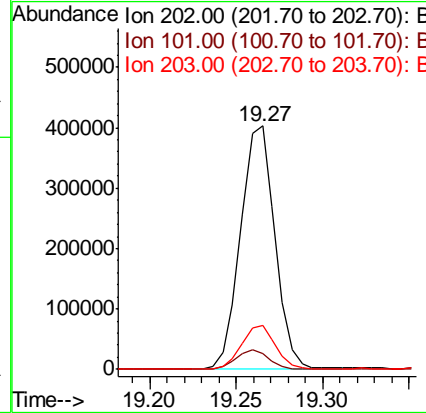
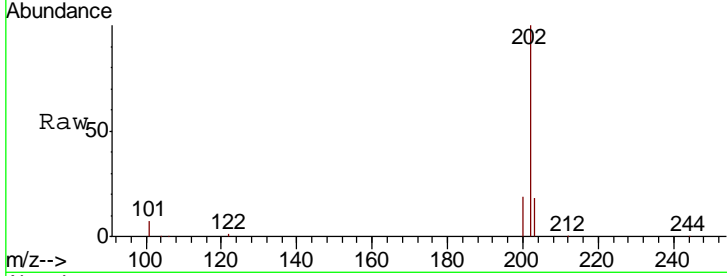
#26  
 Fluoranthene  
 Concen: 4.566 ng  
 RT: 19.27 min Scan# 1392  
 Delta R.T. -0.00 min  
 Lab File: BE099267.D  
 Acq: 30 Mar 2019 00:01

Instrument :  
 BNA\_E  
 ClientSampled :  
 EXT-027-SW014-032519

Tgt Ion	Resp	Lower	Upper
202	100		
101	7.7	7.0	10.4
203	17.6	13.8	20.6

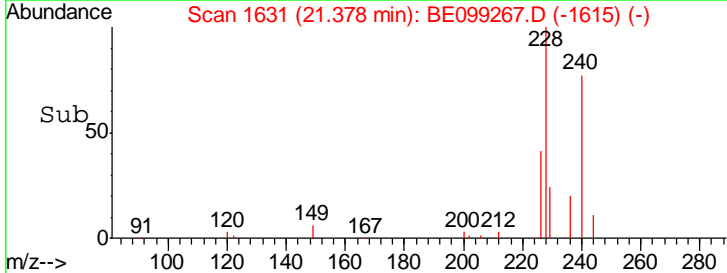
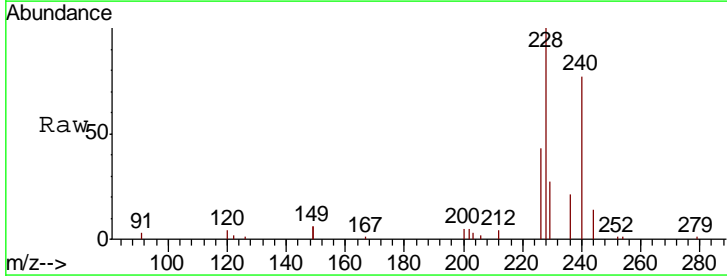
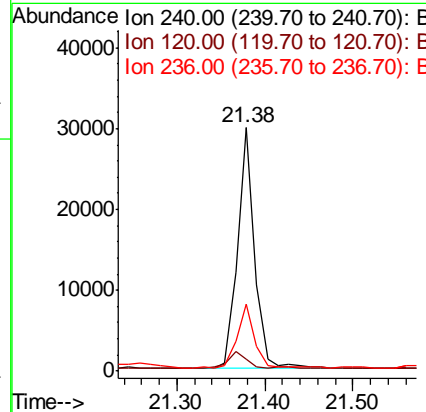
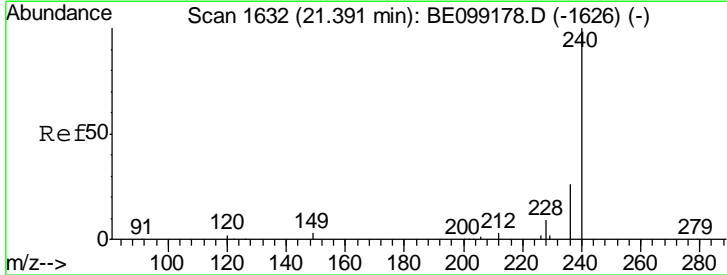
Manual Integrations  
 APPROVED

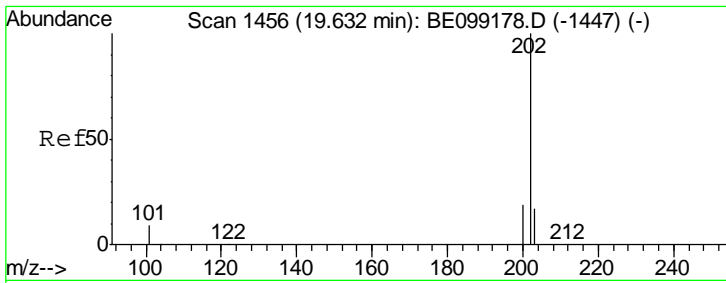
Sohil  
 4/1/2019 5:45:18 PM



#27  
 Chrysene-d12  
 Concen: 0.400 ng  
 RT: 21.38 min Scan# 1631  
 Delta R.T. -0.01 min  
 Lab File: BE099267.D  
 Acq: 30 Mar 2019 00:01

Tgt Ion	Resp	Lower	Upper
240	100		
120	4.8	2.6	3.8#
236	27.3	20.9	31.3





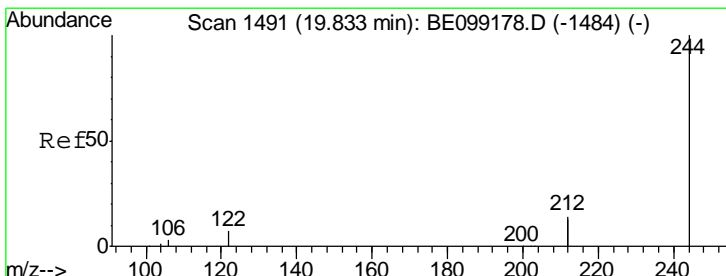
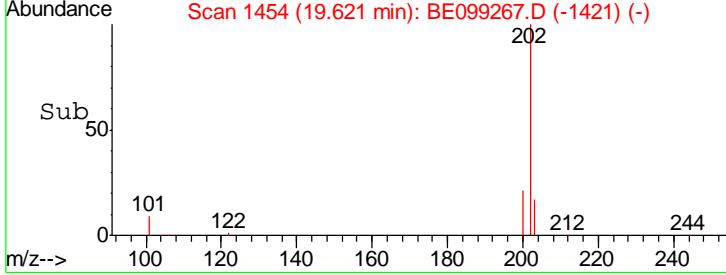
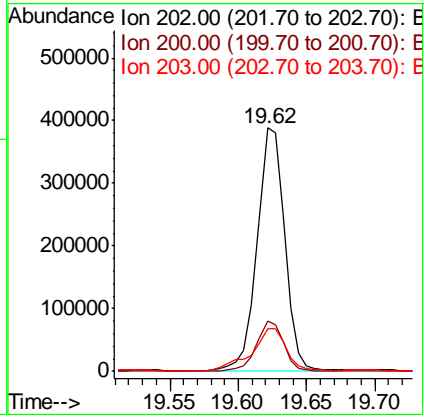
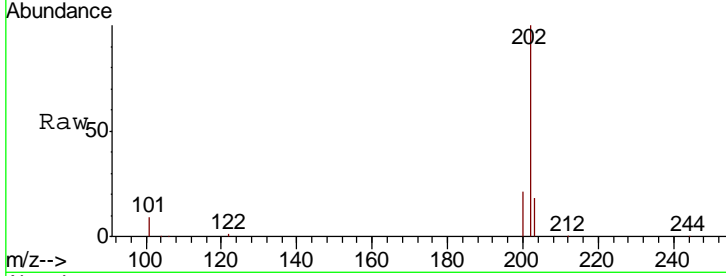
#28  
 Pyrene  
 Concen: 4.044 ng  
 RT: 19.62 min Scan# 1454  
 Delta R.T. -0.01 min  
 Lab File: BE099267.D  
 Acq: 30 Mar 2019 00:01

**Instrument :**  
 BNA\_E  
**Client Sampled :**  
 EXT-027-SW014-032519

Tgt Ion	Resp	Lower	Upper
202	100		
200	20.2	15.8	23.8
203	22.0	14.1	21.1#

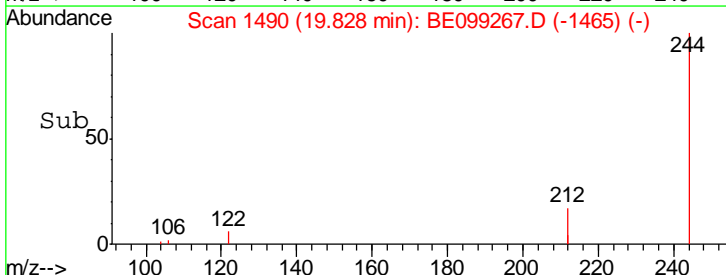
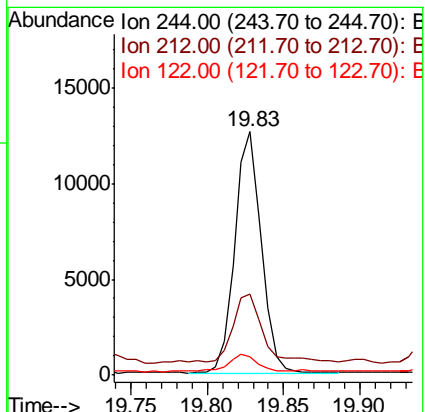
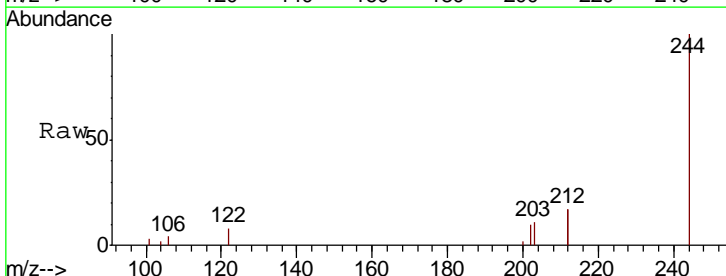
**Manual Integrations**  
**APPROVED**

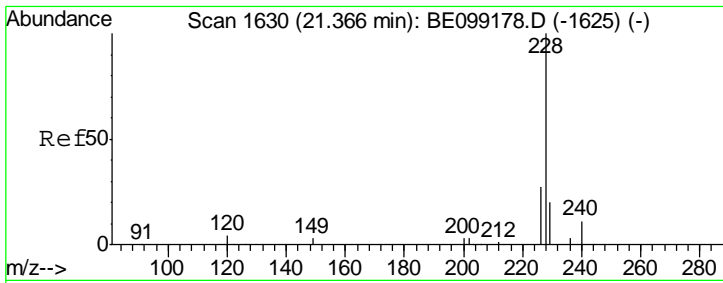
Sohil  
 4/1/2019 5:45:18 PM



#29  
 Terphenyl-d14  
 Concen: 0.174 ng  
 RT: 19.83 min Scan# 1490  
 Delta R.T. -0.00 min  
 Lab File: BE099267.D  
 Acq: 30 Mar 2019 00:01

Tgt Ion	Resp	Lower	Upper
244	100		
212	33.1	22.7	34.1
122	7.7	5.8	8.6





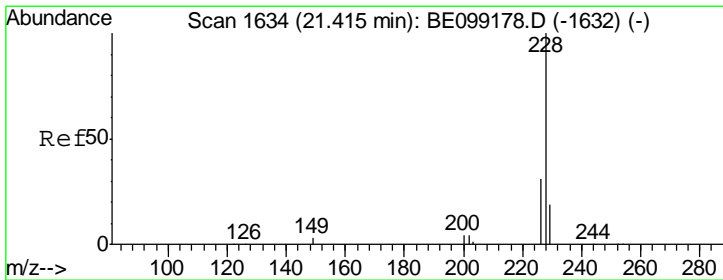
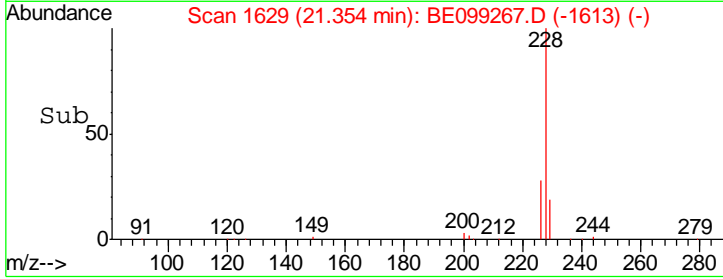
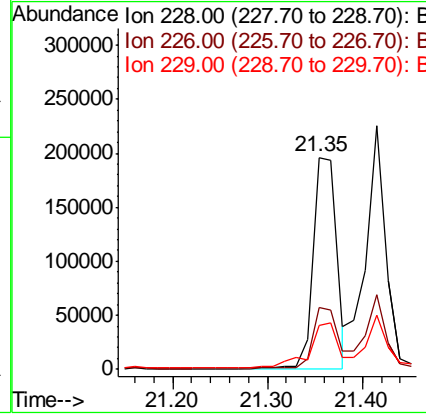
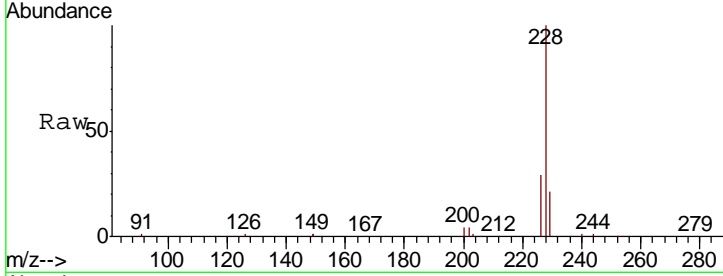
#30  
 Benzo(a)anthracene  
 Concen: 2.529 ng  
 RT: 21.35 min Scan# 1629  
 Delta R.T. -0.01 min  
 Lab File: BE099267.D  
 Acq: 30 Mar 2019 00:01

Instrument :  
 BNA\_E  
 ClientSampled :  
 EXT-027-SW014-032519

Tgt Ion	Resp	Lower	Upper
228	100		
226	29.1	21.7	32.5
229	20.6	15.9	23.9

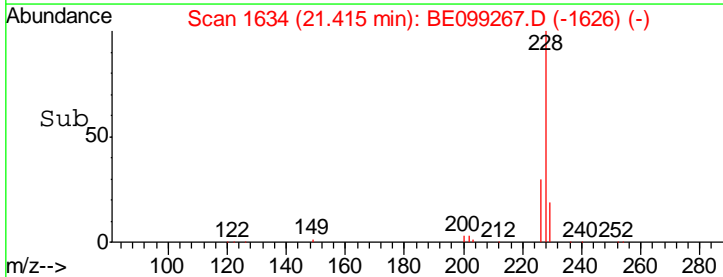
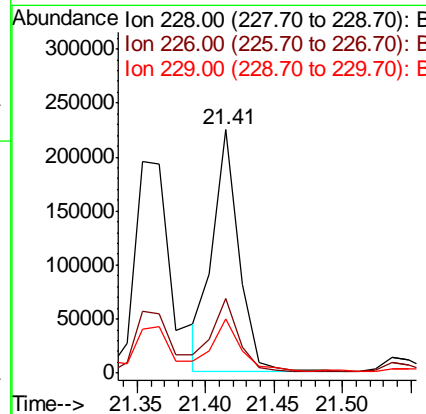
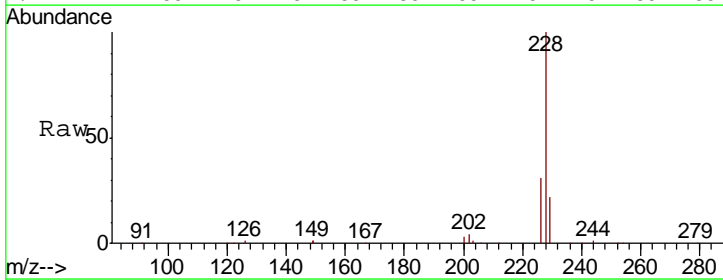
Manual Integrations  
 APPROVED

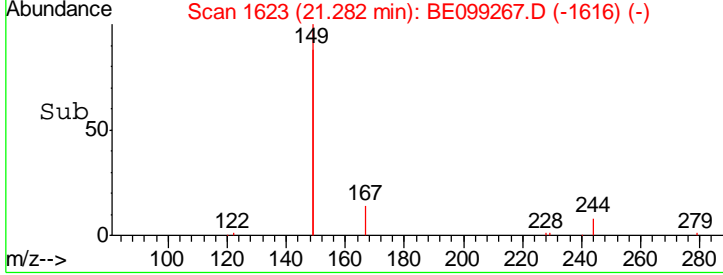
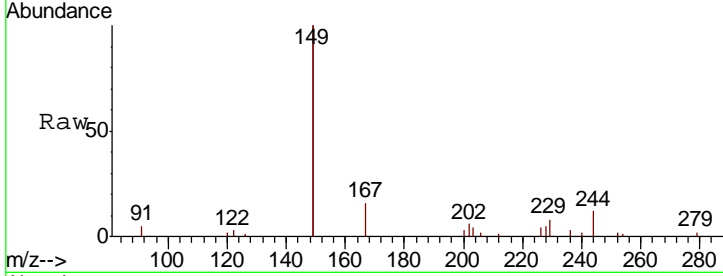
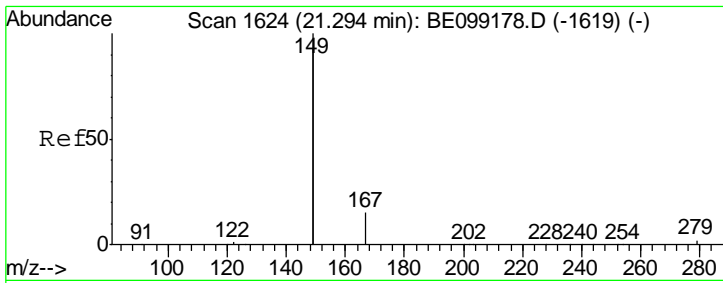
Sohil  
 4/1/2019 5:45:18 PM



#31  
 Chrysene  
 Concen: 2.068 ng  
 RT: 21.41 min Scan# 1634  
 Delta R.T. 0.00 min  
 Lab File: BE099267.D  
 Acq: 30 Mar 2019 00:01

Tgt Ion	Resp	Lower	Upper
228	100		
226	30.6	24.8	37.2
229	22.3	15.4	23.0



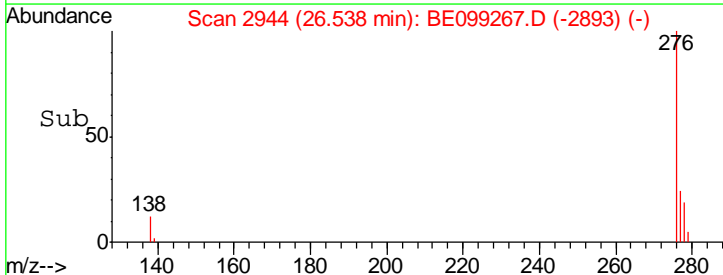
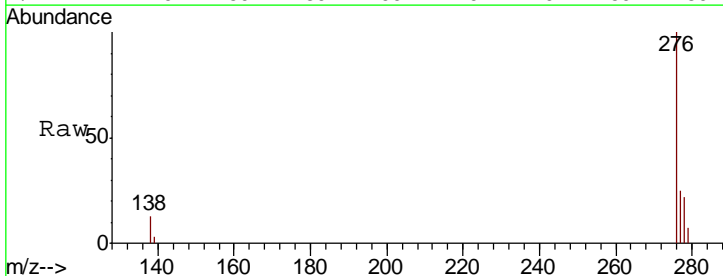
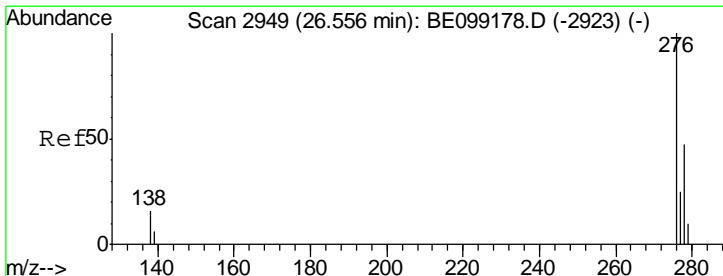
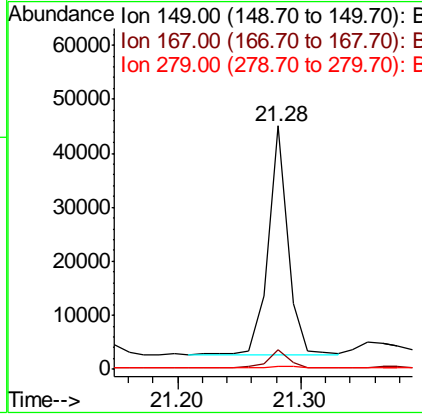


#32  
 Bis(2-ethylhexyl)phthalate  
 Concen: 0.297 ng  
 RT: 21.28 min Scan# 1623  
 Delta R.T. -0.01 min  
 Lab File: BE099267.D  
 Acq: 30 Mar 2019 00:01

Tgt Ion	Resp	Lower	Upper
149	47091		
167	7.9	5.9	8.9
279	1.3	1.0	1.6

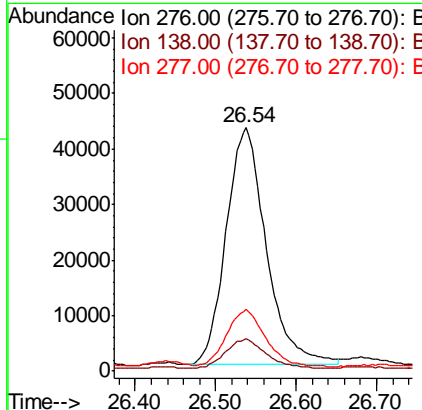
Instrument : BNA\_E  
 ClientSampled : EXT-027-SW014-032519

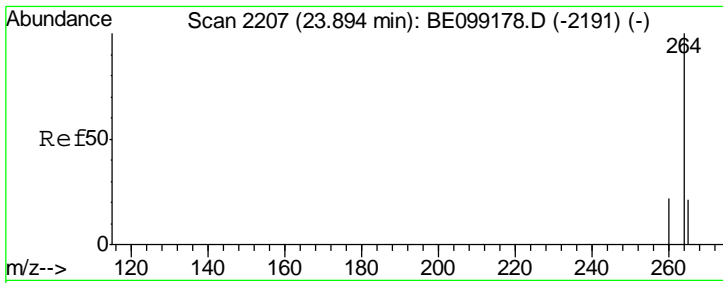
Manual Integrations APPROVED  
 Sohil  
 4/1/2019 5:45:18 PM



#33  
 Indeno(1,2,3-cd)pyrene  
 Concen: 1.099 ng  
 RT: 26.54 min Scan# 2944  
 Delta R.T. -0.02 min  
 Lab File: BE099267.D  
 Acq: 30 Mar 2019 00:01

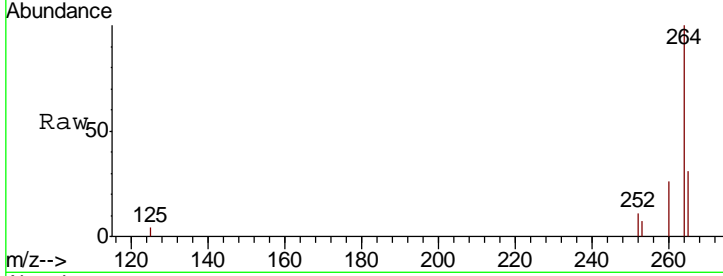
Tgt Ion	Resp	Lower	Upper
276	147585		
138	12.3	12.9	19.3#
277	23.3	18.3	27.5





#34  
 Perylene-d12  
 Concen: 0.400 ng  
 RT: 23.88 min Scan# 2204  
 Delta R.T. -0.01 min  
 Lab File: BE099267.D  
 Acq: 30 Mar 2019 00:01

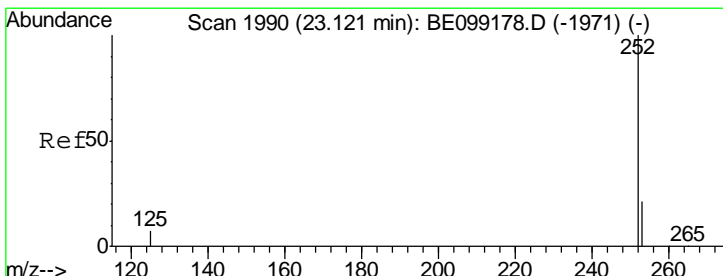
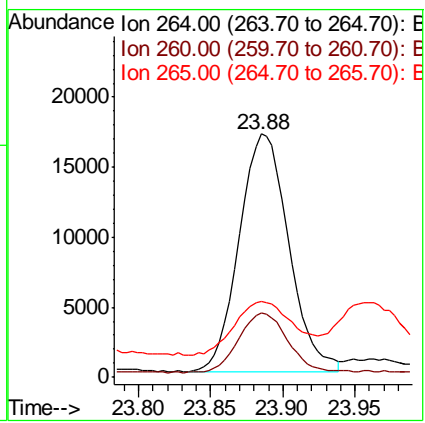
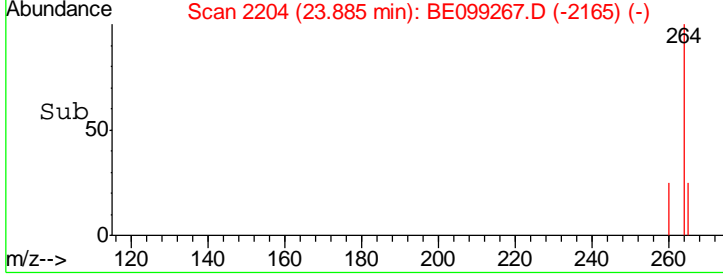
Instrument :  
 BNA\_E  
 ClientSampled :  
 EXT-027-SW014-032519



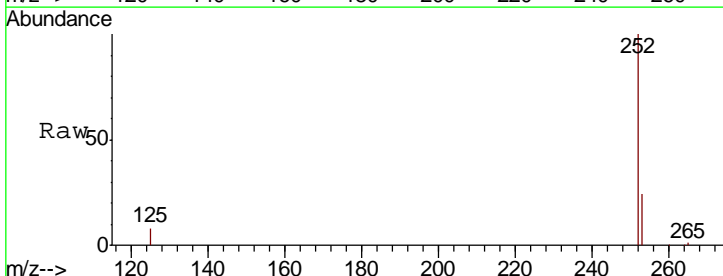
Tgt Ion: 264 Resp: 39833

Ion	Ratio	Lower	Upper
264	100		
260	26.2	18.2	27.2
265	31.0	21.8	32.8

Manual Integrations  
**APPROVED**  
 Sohil  
 4/1/2019 5:45:18 PM

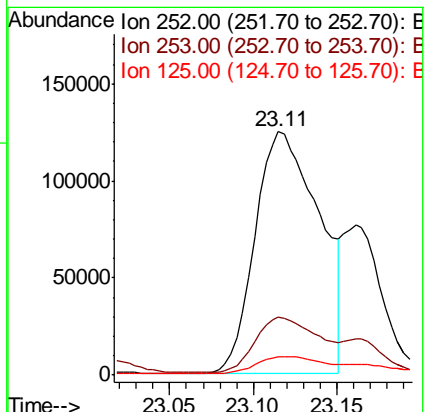
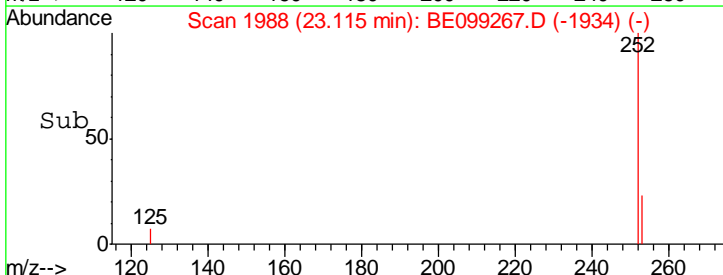


#35  
 Benzo(b)fluoranthene  
 Concen: 2.547 ng  
 RT: 23.11 min Scan# 1988  
 Delta R.T. -0.01 min  
 Lab File: BE099267.D  
 Acq: 30 Mar 2019 00:01

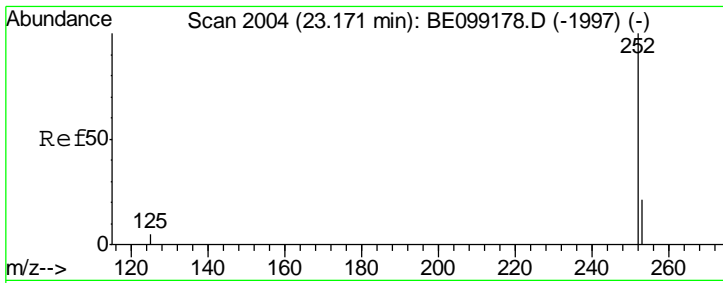


Tgt Ion: 252 Resp: 333921

Ion	Ratio	Lower	Upper
252	100		
253	23.6	17.8	26.8
125	7.6	6.1	9.1

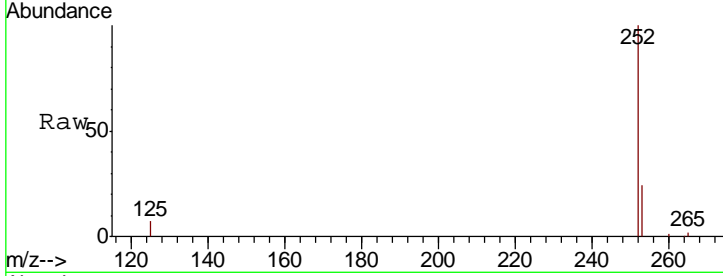






#36  
 Benzo(k)fluoranthene  
 Concen: 0.921 ng m  
 RT: 23.16 min Scan# 2001  
 Delta R.T. -0.01 min  
 Lab File: BE099267.D  
 Acq: 30 Mar 2019 00:01

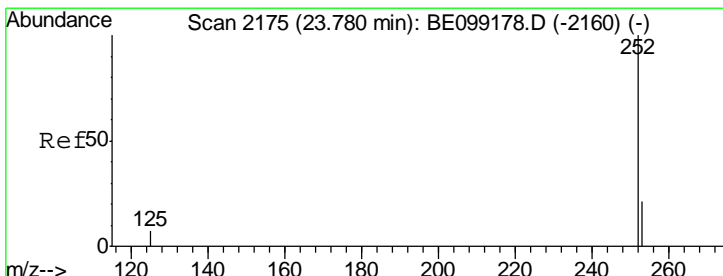
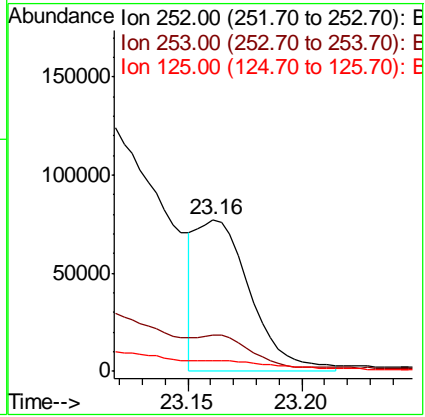
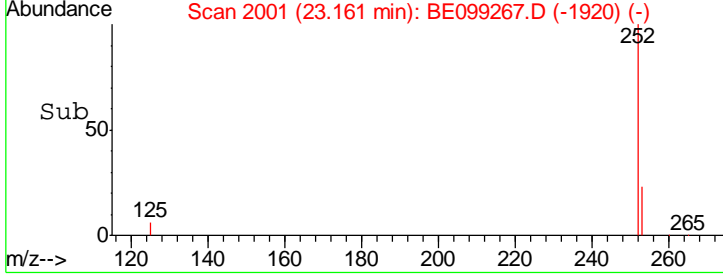
Instrument :  
 BNA\_E  
 ClientSampled :  
 EXT-027-SW014-032519



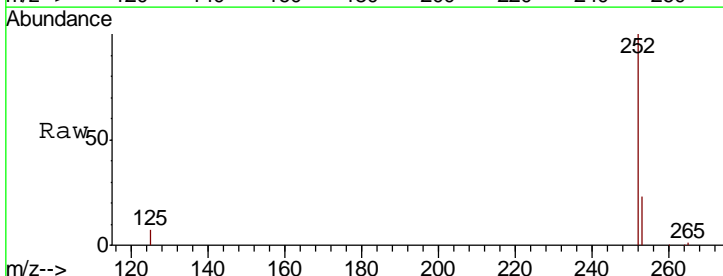
Tgt Ion: 252 Resp: 127594

Ion	Ratio	Lower	Upper
252	100		
253	24.1	17.8	26.6
125	7.1	5.9	8.9

Manual Integrations  
 APPROVED  
 Sohil  
 4/1/2019 5:45:18 PM

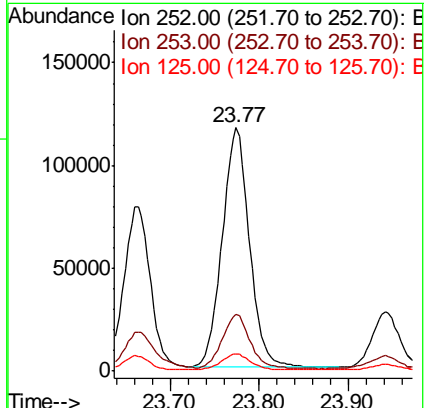
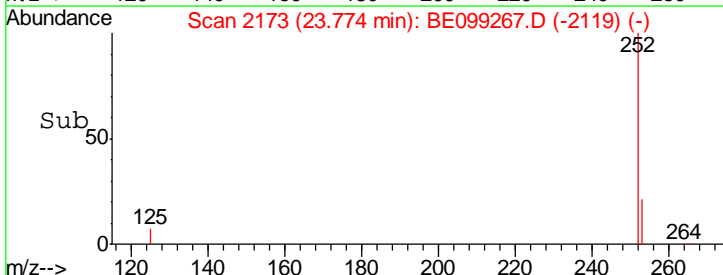


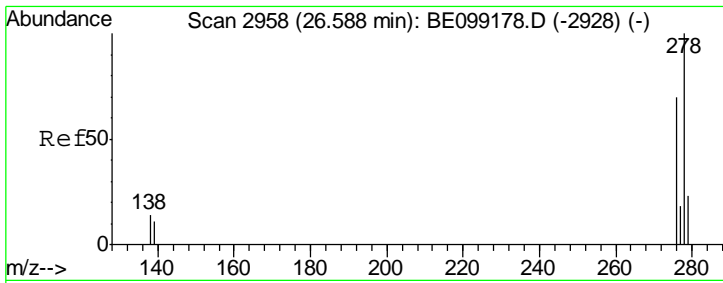
#37  
 Benzo(a)pyrene  
 Concen: 2.043 ng  
 RT: 23.77 min Scan# 2173  
 Delta R.T. -0.01 min  
 Lab File: BE099267.D  
 Acq: 30 Mar 2019 00:01



Tgt Ion: 252 Resp: 250084

Ion	Ratio	Lower	Upper
252	100		
253	23.1	18.1	27.1
125	7.2	6.8	10.2





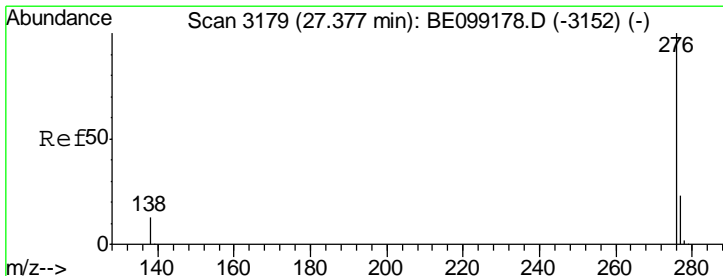
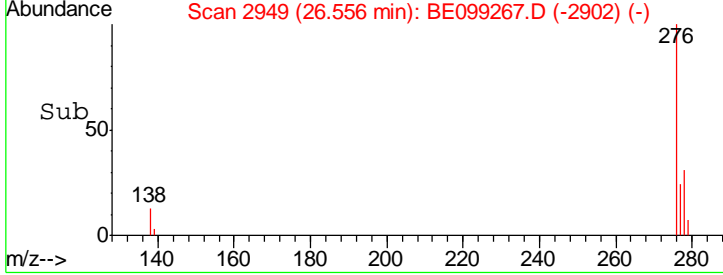
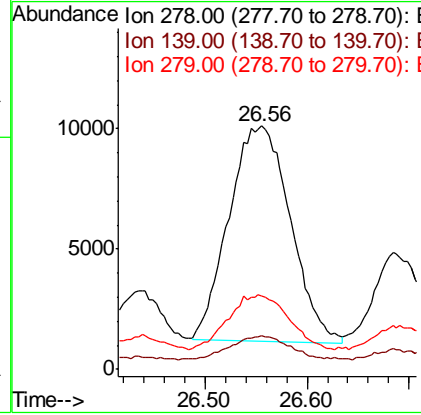
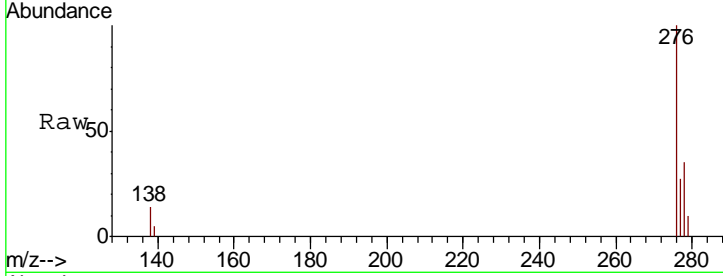
#38  
 Dibenzo(a,h)anthracene  
 Concen: 0.344 ng  
 RT: 26.56 min Scan# 2949  
 Delta R.T. -0.03 min  
 Lab File: BE099267.D  
 Acq: 30 Mar 2019 00:01

**Instrument :**  
 BNA\_E  
**ClientSampled :**  
 EXT-027-SW014-032519

Tgt Ion	Resp	Lower	Upper
278	37451		
139	13.7	9.5	14.3
279	30.2	19.1	28.7#

**Manual Integrations**  
**APPROVED**

Sohil  
 4/1/2019 5:45:18 PM



#39  
 Benzo(g,h,i)perylene  
 Concen: 1.347 ng  
 RT: 27.36 min Scan# 3175  
 Delta R.T. -0.01 min  
 Lab File: BE099267.D  
 Acq: 30 Mar 2019 00:01

Tgt Ion	Resp	Lower	Upper
276	146877		
277	24.7	19.0	28.4
138	13.3	11.1	16.7

