

Data Path : Z:\svoasrv\HPCHEM1\BNA_E\Data\BE040821\
 Data File : BE101248.D
 Acq On : 8 Apr 2021 16:11
 Operator : CG/JU
 Sample : M1977-05
 Misc :
 ALS Vial : 11 Sample Multiplier: 1

Instrument :
 BNA_E
 ClientSampleId :
 GWBR1-175-200-040721

Manual Integrations
 APPROVED

mohammad

4/9/2021 11:19:26 AM

Quant Time: Apr 08 17:49:32 2021
 Quant Method : Z:\svoasrv\HPCHEM1\BNA_E\Methods\8270-SIM-BE040621.M
 Quant Title : ASP BNA STANDARDS FOR 5 POINT CALIBRATION
 QLast Update : Wed Apr 07 10:22:45 2021
 Response via : Initial Calibration

Compound	R.T.	QIon	Response	Conc	Units	Dev(Min)	
Internal Standards							
1) 1,4-Dichlorobenzene-d4	7.829	152	3804	0.40	ng	0.00	
7) Naphthalene-d8	10.614	136	17855	0.40	ng	0.00	
13) Acenaphthene-d10	14.443	164	14684	0.40	ng	0.00	
19) Phenanthrene-d10	17.197	188	43164	0.40	ng	#-0.01	
29) Chrysene-d12	21.355	240	33352	0.40	ng	# 0.00	
36) Perylene-d12	23.834	264	32632	0.40	ng	0.00	
System Monitoring Compounds							
4) 2-Fluorophenol	5.422	112	1479	0.17	ng	0.00	
5) Phenol-d6	6.989	99	1389	0.10	ng	0.00	
8) Nitrobenzene-d5	8.977	82	4583	0.35	ng	0.00	
11) 2-Methylnaphthalene-d10	12.196	152	8577	0.21	ng	0.00	
14) 2,4,6-Tribromophenol	15.957	330	1979	0.50	ng	0.00	
15) 2-Fluorobiphenyl	13.075	172	13693	0.26	ng	0.00	
27) Fluoranthene-d10	19.214	212	175505	0.23	ng	0.00	
31) Terphenyl-d14	19.812	244	42037	0.47	ng	0.00	
Target Compounds							
2) 1,4-Dioxane	3.361	88	26118	4.50	ng	97	Qvalue
9) Naphthalene	10.666	128	7068	0.04	ng	# 97	
12) 2-Methylnaphthalene	12.268	142	742	0.02	ng	# 76	
25) Phenanthrene	17.242	178	12933	0.10	ng	96	
28) Fluoranthene	19.243	202	18079	0.11	ng	# 85	
30) Pyrene	19.605	202	12853	0.11	ng	# 94	
32) Benzo(a)anthracene	21.343	228	5853	0.06	ng	96	
33) Chrysene	21.391	228	7288	0.07	ng	# 95	
34) Bis(2-ethylhexyl)phtha...	21.282	149	19401	0.29	ng	100	
35) Indeno(1,2,3-cd)pyrene	26.441	276	4251	0.05	ng	98	
37) Benzo(b)fluoranthene	23.075	252	6893	0.06	ng	# 83	
38) Benzo(k)fluoranthene	23.122	252	5206m	0.04	ng		
39) Benzo(a)pyrene	23.720	252	4653	0.05	ng	# 78	
40) Dibenzo(a,h)anthracene	26.462	278	2471	0.03	ng	# 73	
41) Benzo(g,h,i)perylene	27.236	276	4252	0.04	ng	# 89	

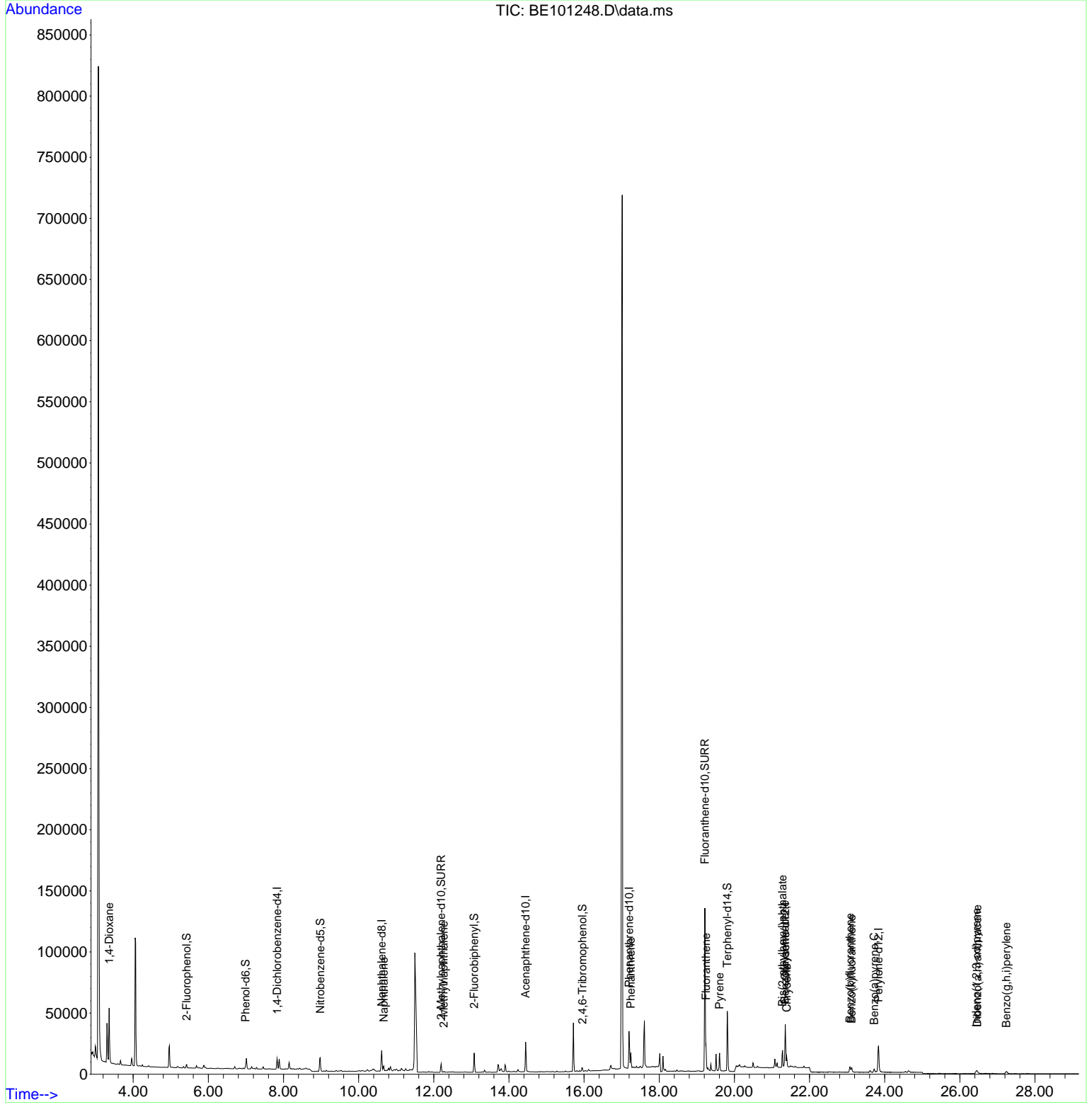
(#) = qualifier out of range (m) = manual integration (+) = signals summed

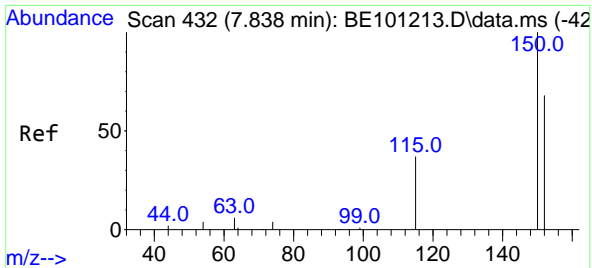
Data Path : Z:\svoasrv\HPCHEM1\BNA_E\Data\BE040821\
 Data File : BE101248.D
 Acq On : 8 Apr 2021 16:11
 Operator : CG/JU
 Sample : M1977-05
 Misc :
 ALS Vial : 11 Sample Multiplier: 1

Instrument :
 BNA_E
 ClientSampleId :
 GWBR1-175-200-040721

Manual Integrations
APPROVED
 mohammad
 4/9/2021 11:19:26 AM

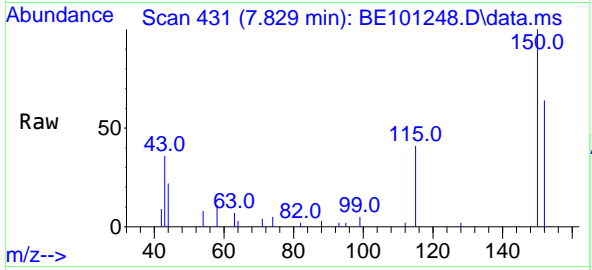
Quant Time: Apr 08 17:49:32 2021
 Quant Method : Z:\svoasrv\HPCHEM1\BNA_E\Methods\8270-SIM-BE040621.M
 Quant Title : ASP BNA STANDARDS FOR 5 POINT CALIBRATION
 QLast Update : Wed Apr 07 10:22:45 2021
 Response via : Initial Calibration





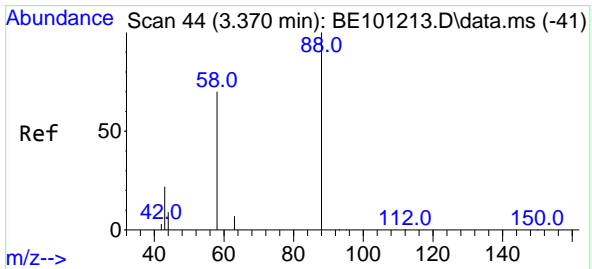
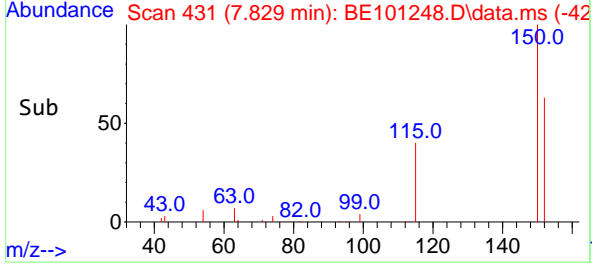
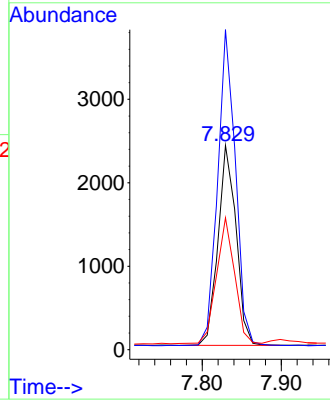
#1
 1,4-Dichlorobenzene-d4
 Concen: 0.40 ng
 RT: 7.829 min Scan# 431
 Delta R.T. -0.001 min
 Lab File: BE101248.D
 Acq: 8 Apr 2021 16:11

Instrument :
 BNA_E
ClientSampled :
 GWBR1-175-200-040721

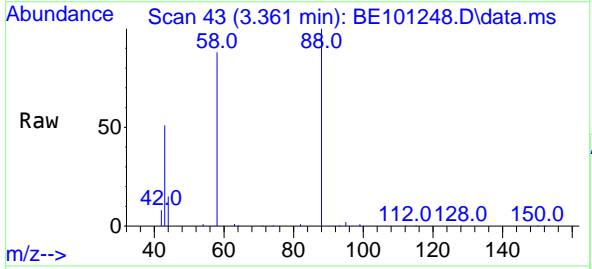


Tgt Ion:152 Resp: 3804
 Ion Ratio Lower Upper
 152 100
 150 156.7 116.9 175.3
 115 64.5 44.5 66.7

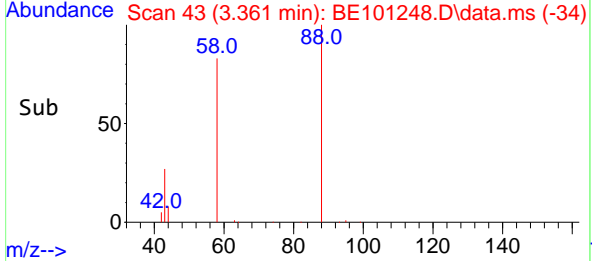
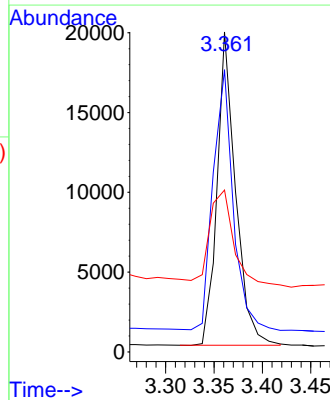
Manual Integrations
APPROVED
 mohammad
 4/9/2021 11:19:26 AM

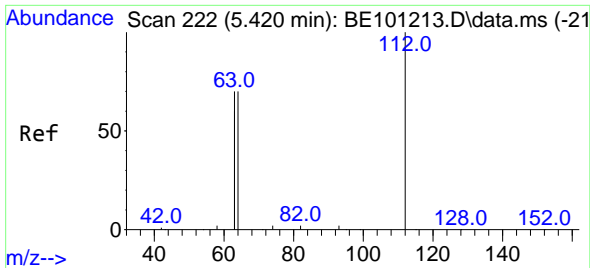


#2
 1,4-Dioxane
 Concen: 4.50 ng
 RT: 3.361 min Scan# 43
 Delta R.T. -0.000 min
 Lab File: BE101248.D
 Acq: 8 Apr 2021 16:11



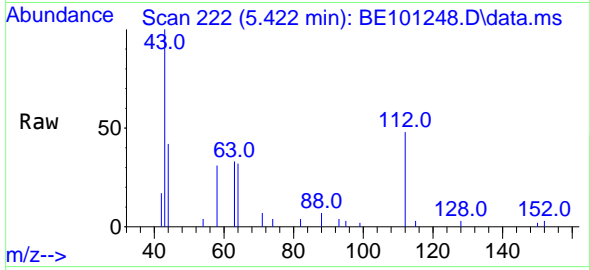
Tgt Ion: 88 Resp: 26118
 Ion Ratio Lower Upper
 88 100
 58 90.4 73.6 110.4
 43 38.5 27.6 41.4





#4
 2-Fluorophenol
 Concen: 0.17 ng
 RT: 5.422 min Scan# 222
 Delta R.T. -0.000 min
 Lab File: BE101248.D
 Acq: 8 Apr 2021 16:11

Instrument :
 BNA_E
 ClientSampleId :
 GWBR1-175-200-040721

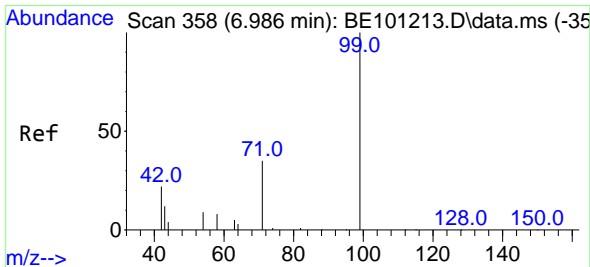
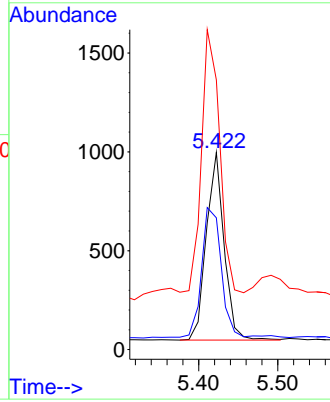
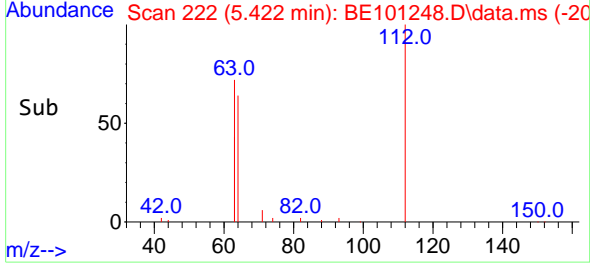


Tgt Ion:112 Resp: 1479
 Ion Ratio Lower Upper
 112 100
 64 77.9 62.3 93.5
 63 150.8 117.3 175.9

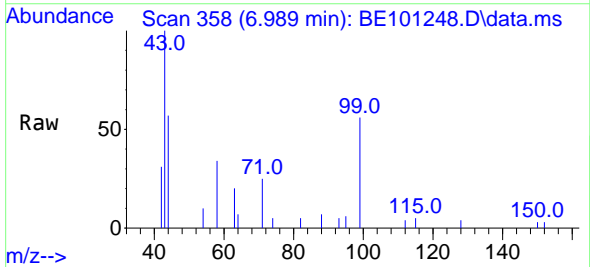
Manual Integrations
 APPROVED

mohammad

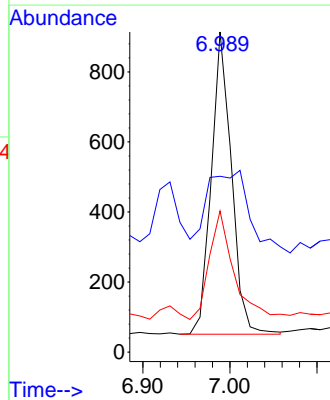
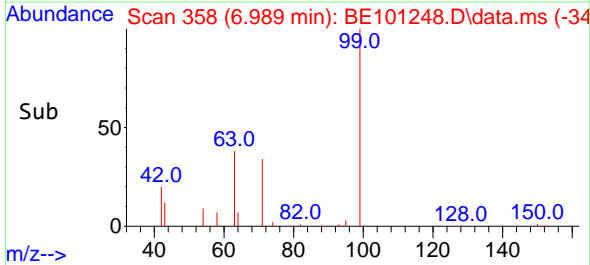
4/9/2021 11:19:26 AM

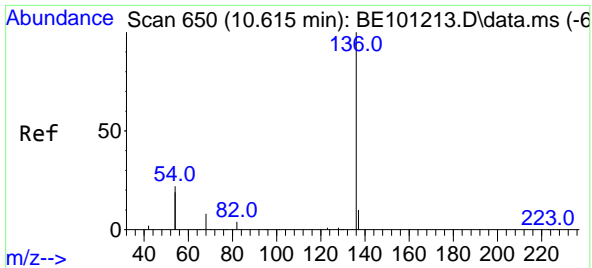


#5
 Phenol-d6
 Concen: 0.10 ng
 RT: 6.989 min Scan# 358
 Delta R.T. -0.000 min
 Lab File: BE101248.D
 Acq: 8 Apr 2021 16:11



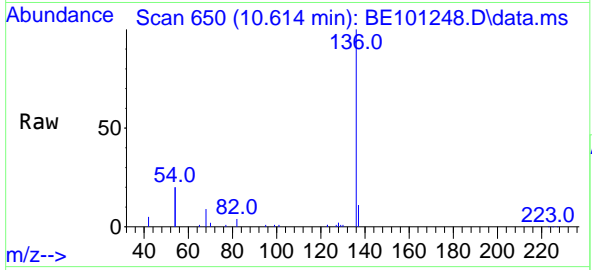
Tgt Ion: 99 Resp: 1389
 Ion Ratio Lower Upper
 99 100
 42 0.0 18.5 27.7#
 71 44.5 26.5 39.7#





#7
 Naphthalene-d8
 Concen: 0.40 ng
 RT: 10.614 min Scan# 650
 Delta R.T. -0.000 min
 Lab File: BE101248.D
 Acq: 8 Apr 2021 16:11

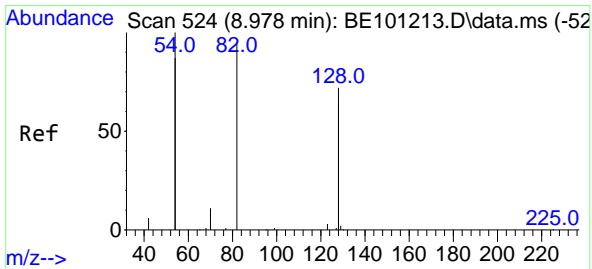
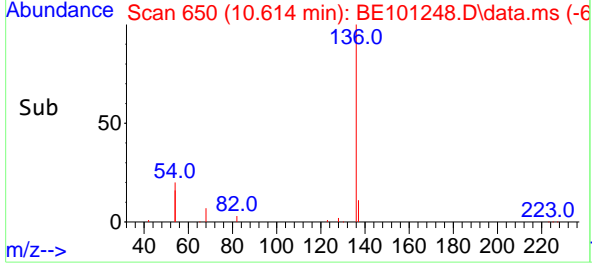
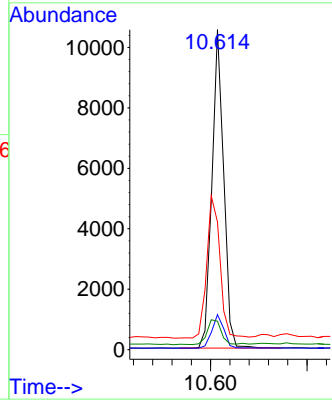
Instrument :
 BNA_E
 ClientSampled :
 GWBR1-175-200-040721



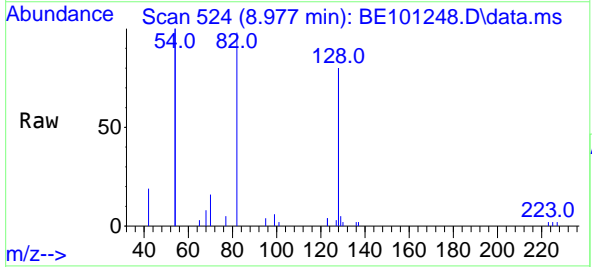
Tgt Ion: 136 Resp: 17855

Ion	Ratio	Lower	Upper
136	100		
137	11.0	8.6	13.0
54	39.9	34.7	52.1
68	8.9	7.0	10.4

Manual Integrations
APPROVED
 mohammad
 4/9/2021 11:19:26 AM

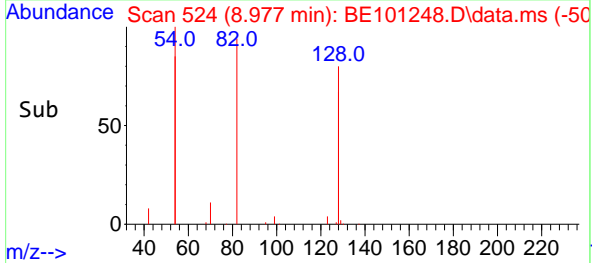
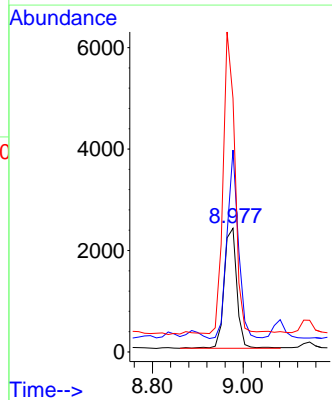


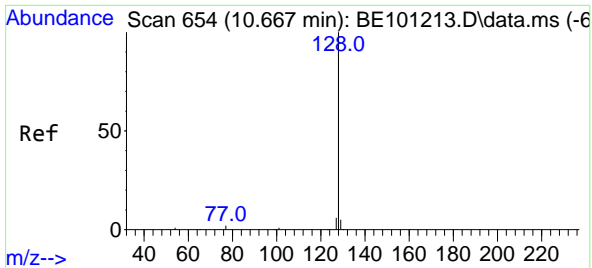
#8
 Nitrobenzene-d5
 Concen: 0.35 ng
 RT: 8.977 min Scan# 524
 Delta R.T. -0.000 min
 Lab File: BE101248.D
 Acq: 8 Apr 2021 16:11



Tgt Ion: 82 Resp: 4583

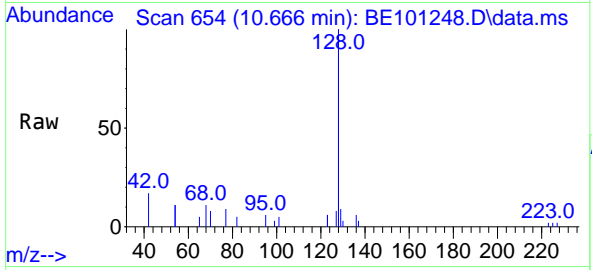
Ion	Ratio	Lower	Upper
82	100		
128	163.3	118.7	178.1
54	205.1	164.4	246.6





#9
 Naphthalene
 Concen: 0.04 ng
 RT: 10.666 min Scan# 654
 Delta R.T. -0.000 min
 Lab File: BE101248.D
 Acq: 8 Apr 2021 16:11

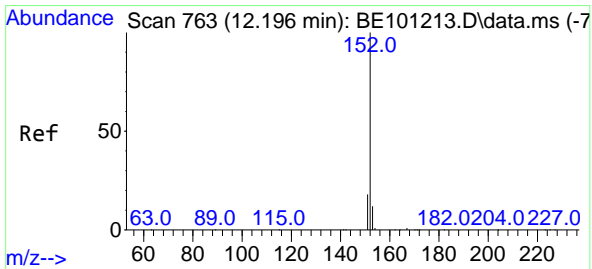
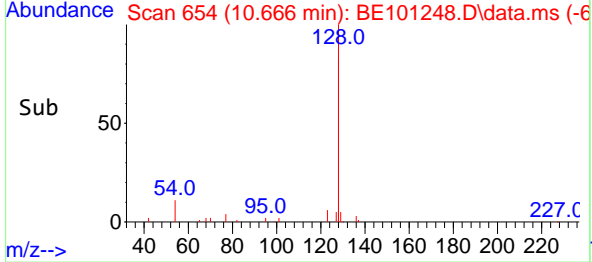
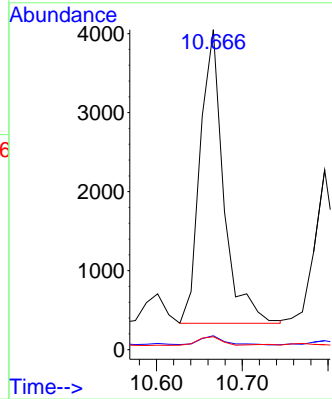
Instrument :
 BNA_E
ClientSampled :
 GWBR1-175-200-040721



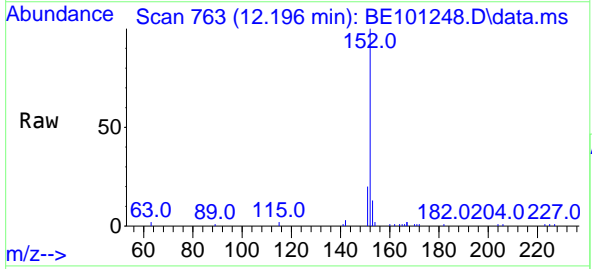
Tgt Ion:128 Resp: 7068

Ion	Ratio	Lower	Upper
128	100		
129	4.3	2.2	3.4#
127	4.0	2.6	3.8#

Manual Integrations
APPROVED
 mohammad
 4/9/2021 11:19:26 AM

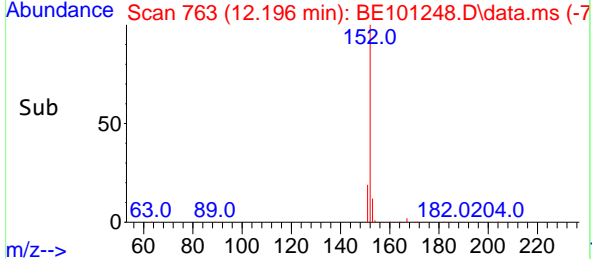
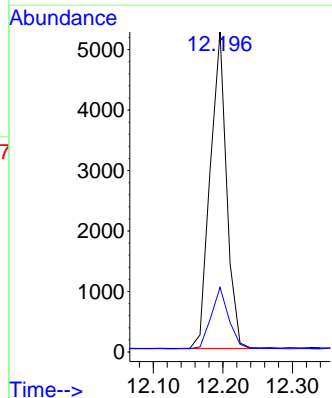


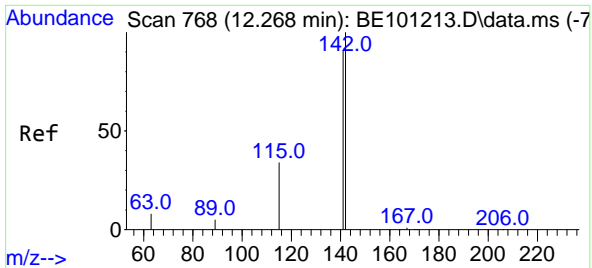
#11
 2-Methylnaphthalene-d10
 Concen: 0.21 ng
 RT: 12.196 min Scan# 763
 Delta R.T. -0.000 min
 Lab File: BE101248.D
 Acq: 8 Apr 2021 16:11



Tgt Ion:152 Resp: 8577

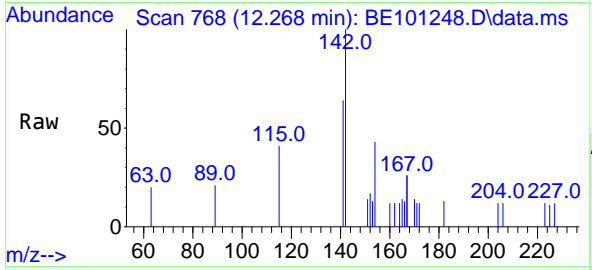
Ion	Ratio	Lower	Upper
152	100		
151	21.1	16.5	24.7





#12
 2-Methylnaphthalene
 Concen: 0.02 ng
 RT: 12.268 min Scan# 768
 Delta R.T. -0.000 min
 Lab File: BE101248.D
 Acq: 8 Apr 2021 16:11

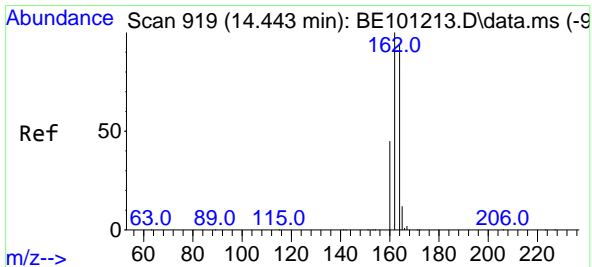
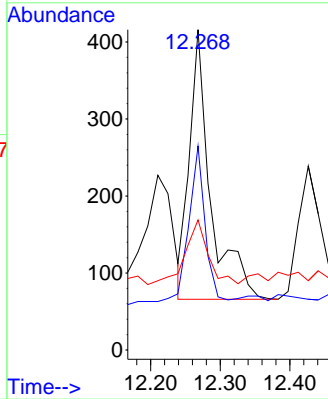
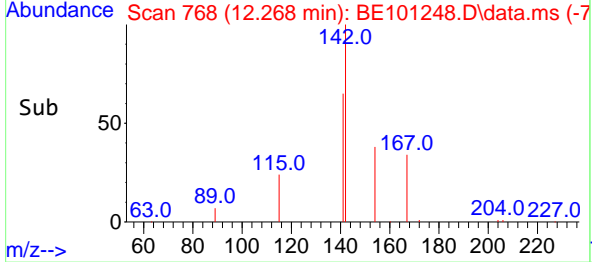
Instrument :
 BNA_E
ClientSampled :
 GWBR1-175-200-040721



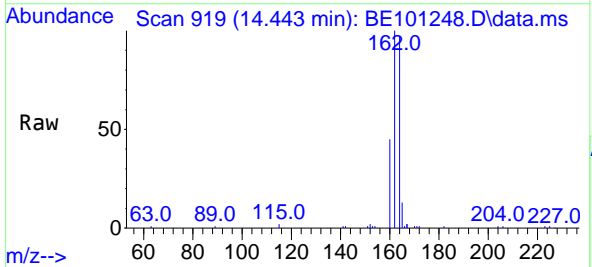
Tgt Ion:142 Resp: 742

Ion	Ratio	Lower	Upper
142	100		
141	63.7	73.0	109.6#
115	40.6	27.8	41.8

Manual Integrations
APPROVED
 mohammad
 4/9/2021 11:19:26 AM

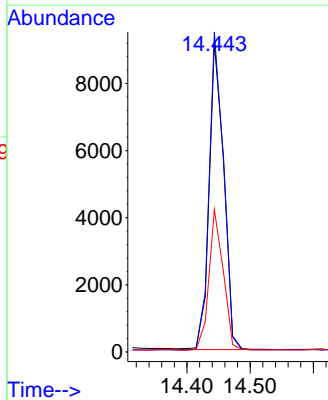
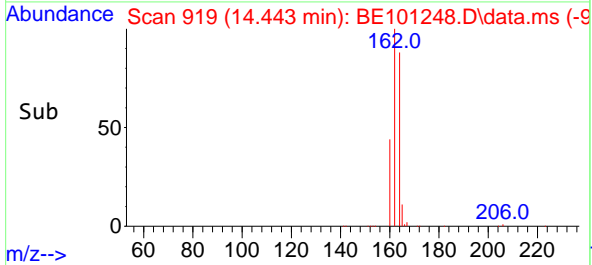


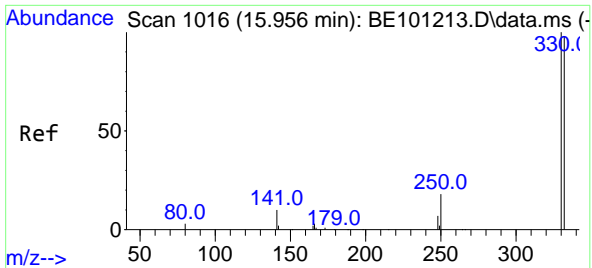
#13
 Acenaphthene-d10
 Concen: 0.40 ng
 RT: 14.443 min Scan# 919
 Delta R.T. -0.000 min
 Lab File: BE101248.D
 Acq: 8 Apr 2021 16:11



Tgt Ion:164 Resp: 14684

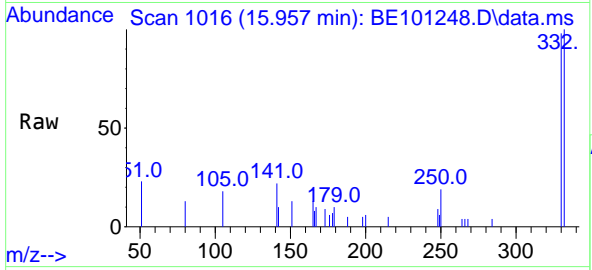
Ion	Ratio	Lower	Upper
164	100		
162	103.5	85.3	127.9
160	46.1	39.1	58.7





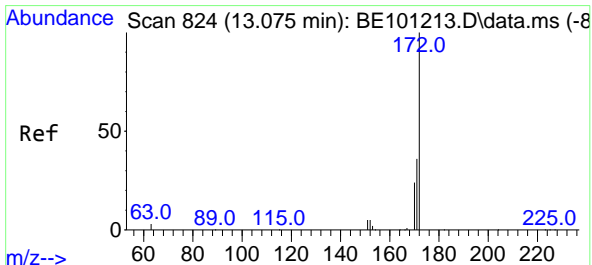
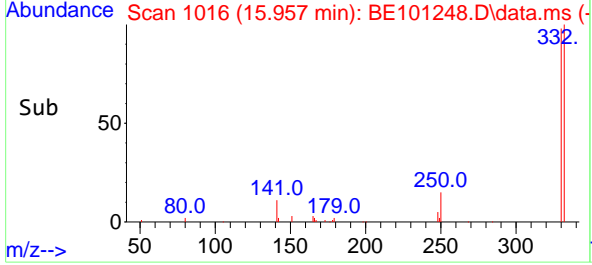
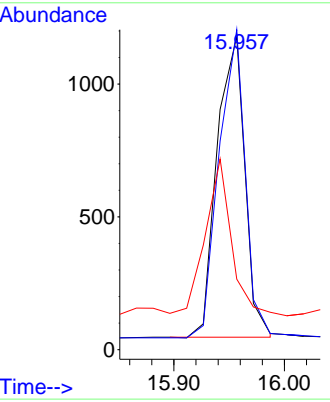
#14
 2,4,6-Tribromophenol
 Concen: 0.50 ng
 RT: 15.957 min Scan# 1016
 Delta R.T. 0.002 min
 Lab File: BE101248.D
 Acq: 8 Apr 2021 16:11

Instrument :
 BNA_E
ClientSampleId :
 GWBR1-175-200-040721

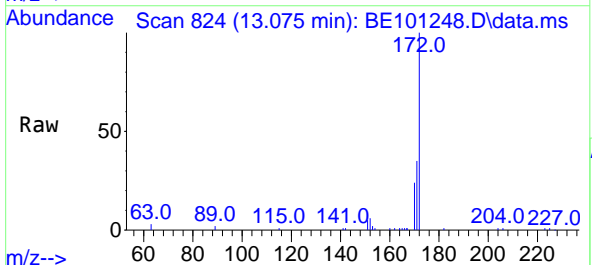


Tgt Ion:330 Resp: 1979
 Ion Ratio Lower Upper
 330 100
 332 96.6 77.8 116.6
 141 46.5 30.4 45.6#

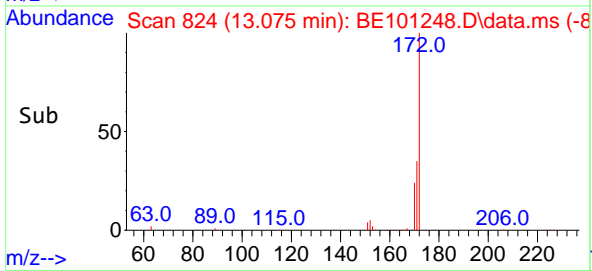
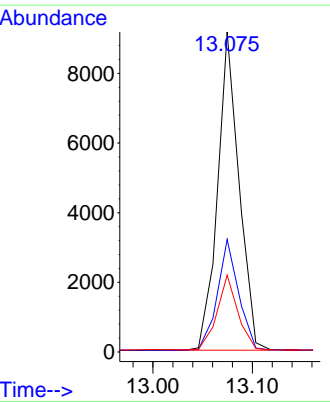
Manual Integrations
APPROVED
 mohammad
 4/9/2021 11:19:26 AM

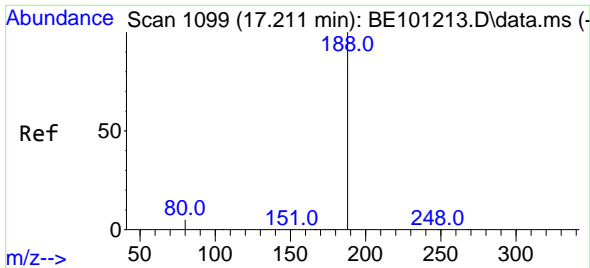


#15
 2-Fluorobiphenyl
 Concen: 0.26 ng
 RT: 13.075 min Scan# 824
 Delta R.T. -0.000 min
 Lab File: BE101248.D
 Acq: 8 Apr 2021 16:11



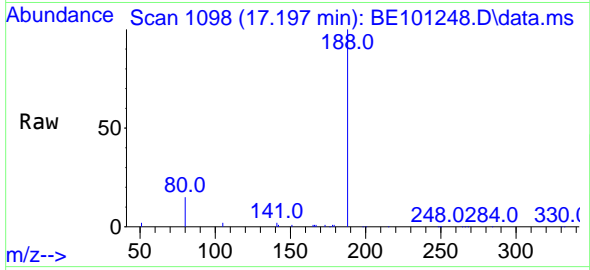
Tgt Ion:172 Resp: 13693
 Ion Ratio Lower Upper
 172 100
 171 35.1 28.7 43.1
 170 24.0 19.3 28.9





#19
 Phenanthrene-d10
 Concen: 0.40 ng
 RT: 17.197 min Scan# 1098
 Delta R.T. -0.013 min
 Lab File: BE101248.D
 Acq: 8 Apr 2021 16:11

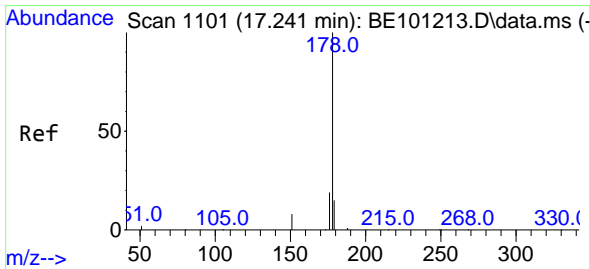
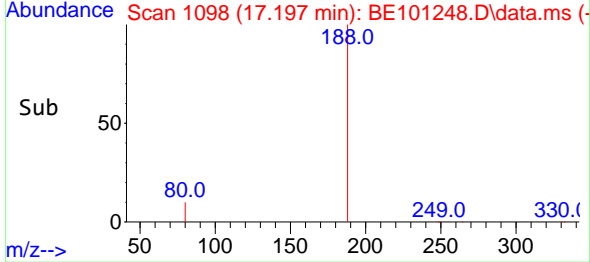
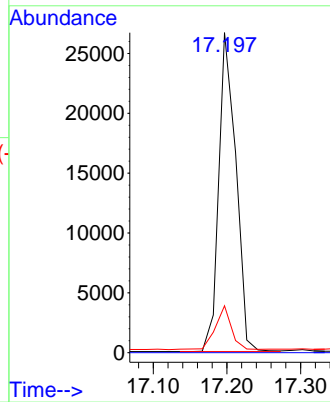
Instrument :
 BNA_E
ClientSampled :
 GWBR1-175-200-040721



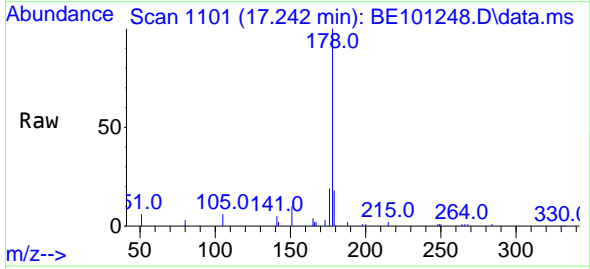
Tgt Ion:188 Resp: 43164

Ion	Ratio	Lower	Upper
188	100		
94	0.0	0.0	0.0
80	14.7	4.6	6.8#

Manual Integrations
APPROVED
 mohammad
 4/9/2021 11:19:26 AM

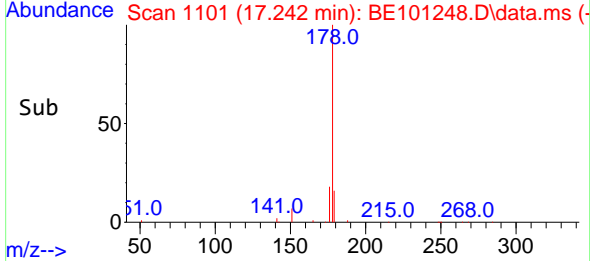
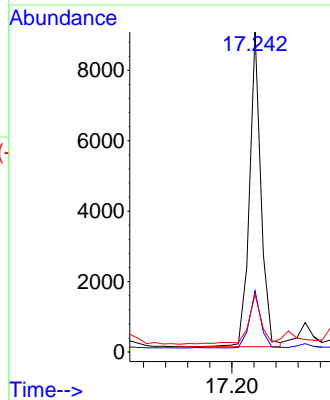


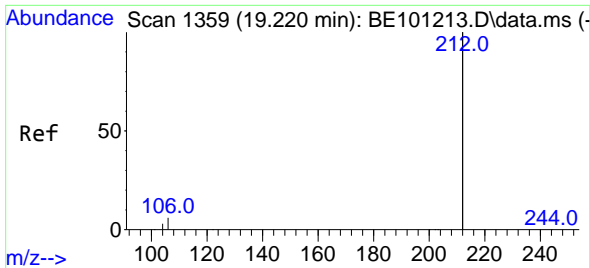
#25
 Phenanthrene
 Concen: 0.10 ng
 RT: 17.242 min Scan# 1101
 Delta R.T. 0.002 min
 Lab File: BE101248.D
 Acq: 8 Apr 2021 16:11



Tgt Ion:178 Resp: 12933

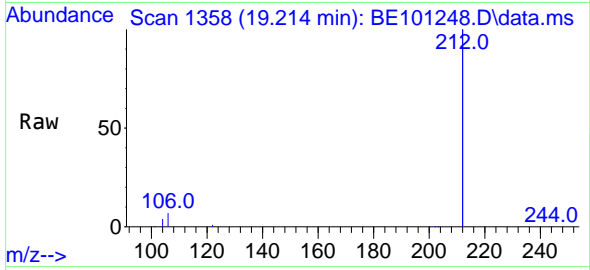
Ion	Ratio	Lower	Upper
178	100		
176	18.1	15.0	22.6
179	17.9	12.2	18.4





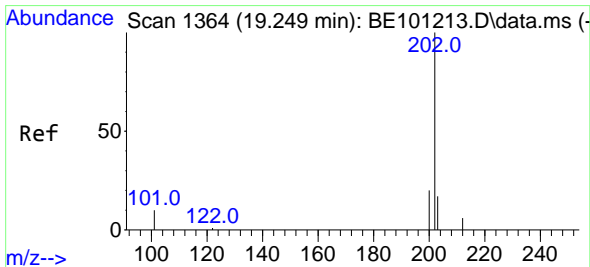
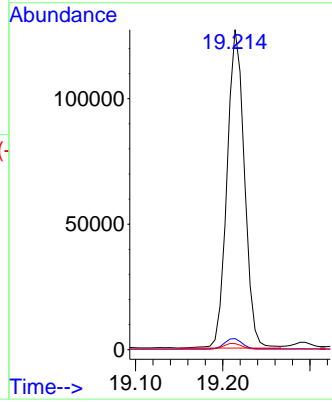
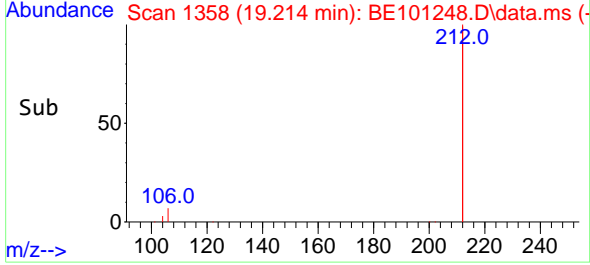
#27
 Fluoranthene-d10
 Concen: 0.23 ng
 RT: 19.214 min Scan# 1358
 Delta R.T. -0.001 min
 Lab File: BE101248.D
 Acq: 8 Apr 2021 16:11

Instrument :
 BNA_E
ClientSampled :
 GWBR1-175-200-040721

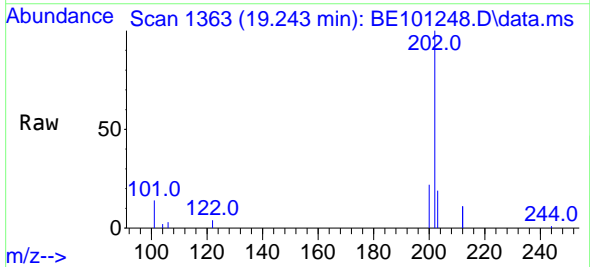


Tgt Ion:212 Resp: 175505
 Ion Ratio Lower Upper
 212 100
 106 3.4 2.6 4.0
 104 1.9 1.4 2.2

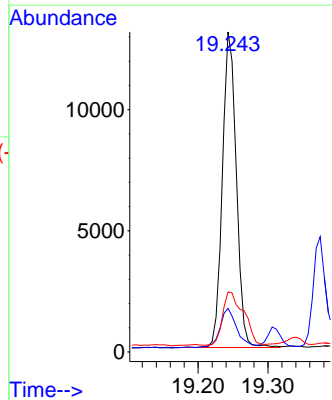
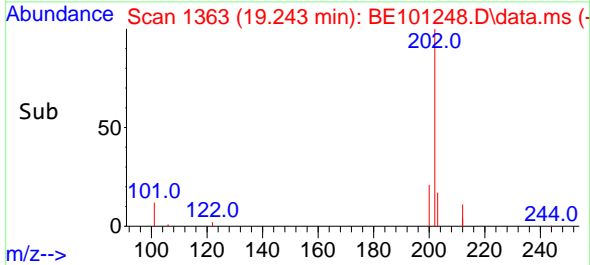
Manual Integrations
APPROVED
 mohammad
 4/9/2021 11:19:26 AM

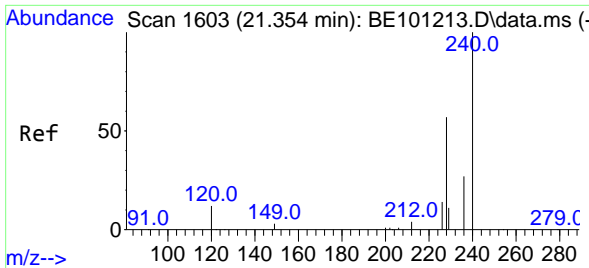


#28
 Fluoranthene
 Concen: 0.11 ng
 RT: 19.243 min Scan# 1363
 Delta R.T. -0.001 min
 Lab File: BE101248.D
 Acq: 8 Apr 2021 16:11



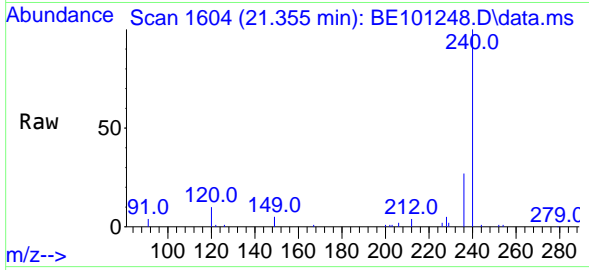
Tgt Ion:202 Resp: 18079
 Ion Ratio Lower Upper
 202 100
 101 15.0 9.1 13.7#
 203 25.4 13.6 20.4#





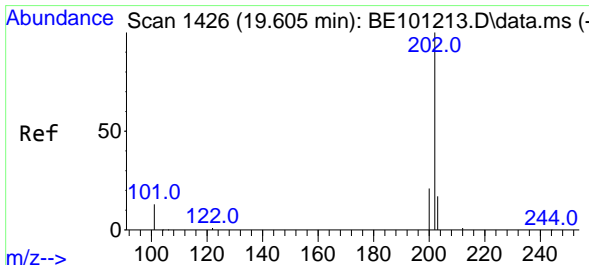
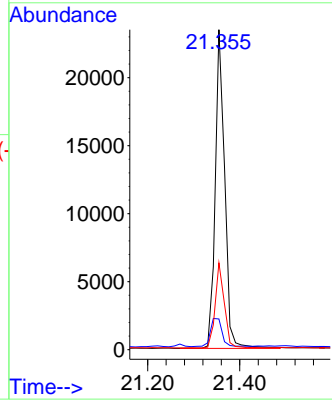
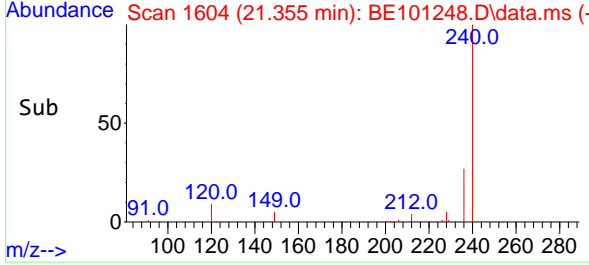
#29
 Chrysene-d12
 Concen: 0.40 ng
 RT: 21.355 min Scan# 1604
 Delta R.T. 0.001 min
 Lab File: BE101248.D
 Acq: 8 Apr 2021 16:11

Instrument :
 BNA_E
ClientSampled :
 GWBR1-175-200-040721

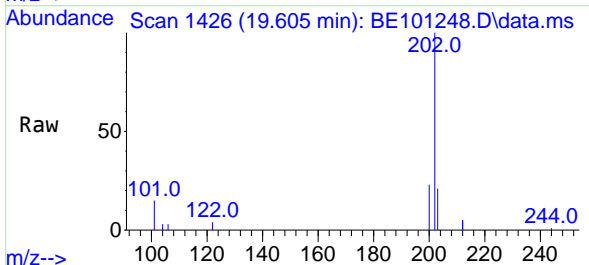


Tgt Ion:240 Resp: 33352
 Ion Ratio Lower Upper
 240 100
 120 9.6 10.2 15.4#
 236 27.2 21.7 32.5

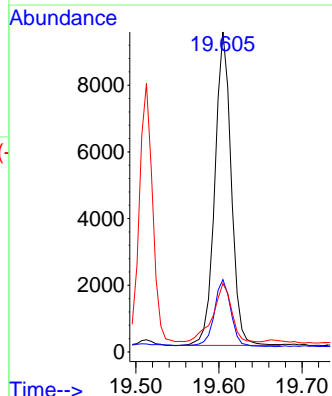
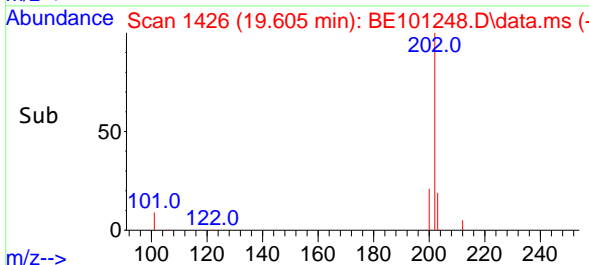
Manual Integrations
APPROVED
 mohammad
 4/9/2021 11:19:26 AM

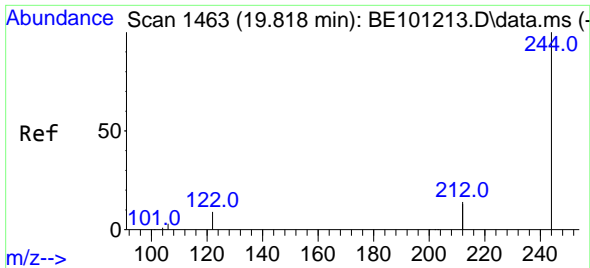


#30
 Pyrene
 Concen: 0.11 ng
 RT: 19.605 min Scan# 1426
 Delta R.T. -0.001 min
 Lab File: BE101248.D
 Acq: 8 Apr 2021 16:11



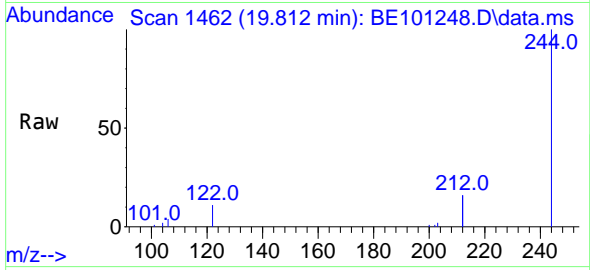
Tgt Ion:202 Resp: 12853
 Ion Ratio Lower Upper
 202 100
 200 22.3 16.6 24.8
 203 21.1 13.8 20.8#





#31
 Terphenyl-d14
 Concen: 0.47 ng
 RT: 19.812 min Scan# 1462
 Delta R.T. -0.001 min
 Lab File: BE101248.D
 Acq: 8 Apr 2021 16:11

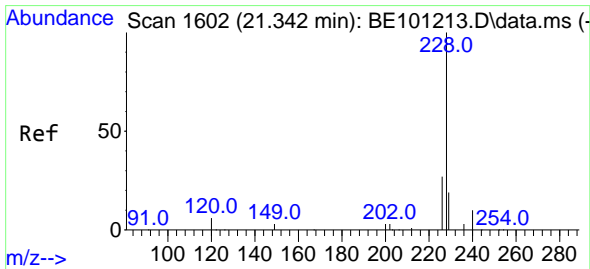
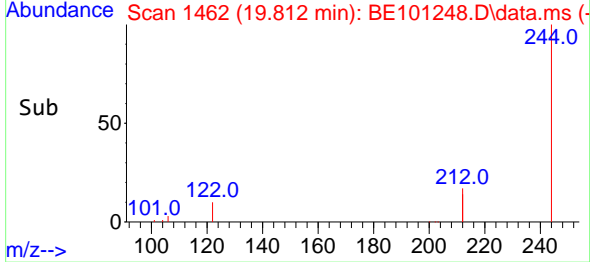
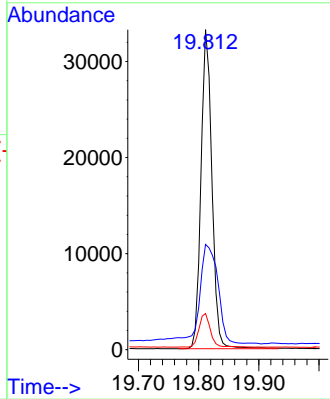
Instrument :
 BNA_E
ClientSampled :
 GWBR1-175-200-040721



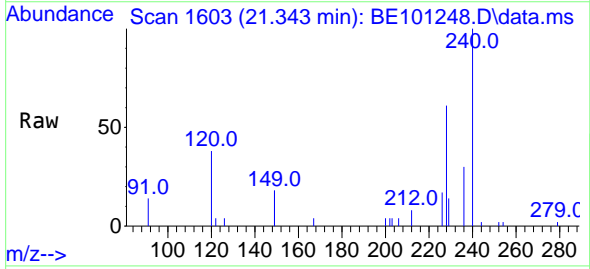
Tgt Ion:244 Resp: 42037

Ion	Ratio	Lower	Upper
244	100		
212	32.9	21.9	32.9#
122	11.3	7.3	10.9#

Manual Integrations
APPROVED
 mohammad
 4/9/2021 11:19:26 AM

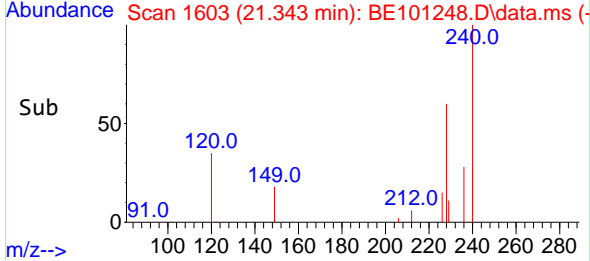
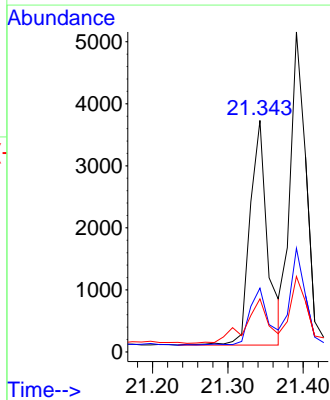


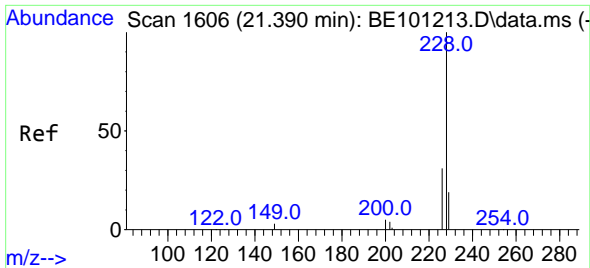
#32
 Benzo(a)anthracene
 Concen: 0.06 ng
 RT: 21.343 min Scan# 1603
 Delta R.T. 0.001 min
 Lab File: BE101248.D
 Acq: 8 Apr 2021 16:11



Tgt Ion:228 Resp: 5853

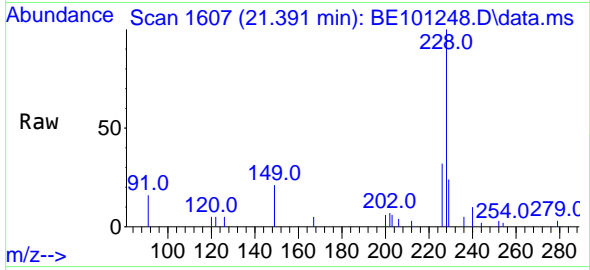
Ion	Ratio	Lower	Upper
228	100		
226	27.5	21.4	32.2
229	22.9	15.7	23.5





#33
 Chrysene
 Concen: 0.07 ng
 RT: 21.391 min Scan# 1607
 Delta R.T. 0.001 min
 Lab File: BE101248.D
 Acq: 8 Apr 2021 16:11

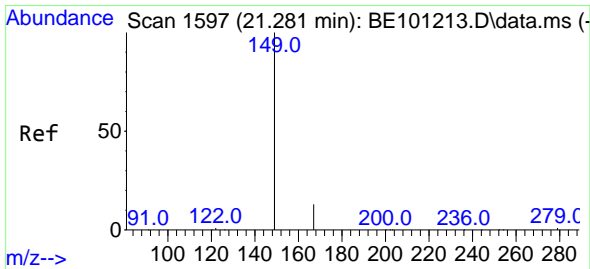
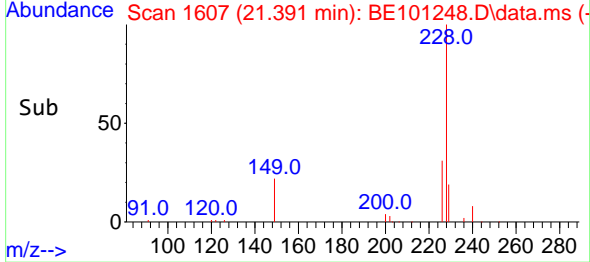
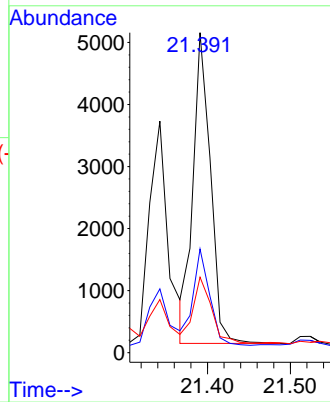
Instrument :
 BNA_E
ClientSampled :
 GWBR1-175-200-040721



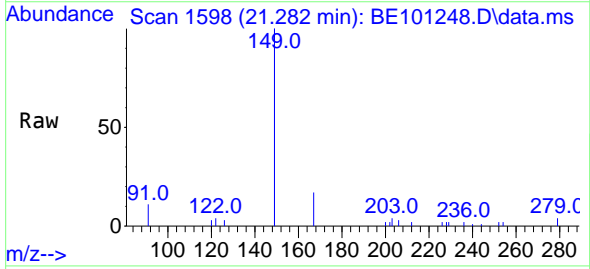
Tgt Ion: 228 Resp: 7288

Ion	Ratio	Lower	Upper
228	100		
226	32.4	24.8	37.2
229	23.6	15.2	22.8#

Manual Integrations
APPROVED
 mohammad
 4/9/2021 11:19:26 AM

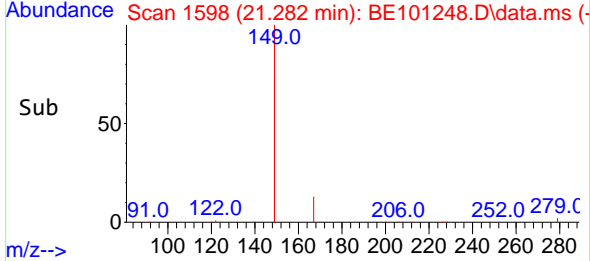
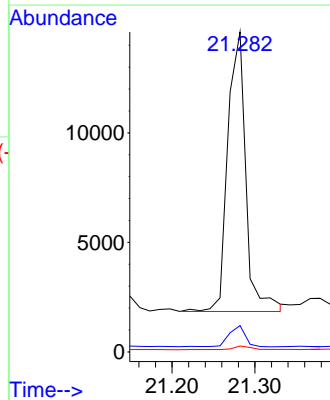


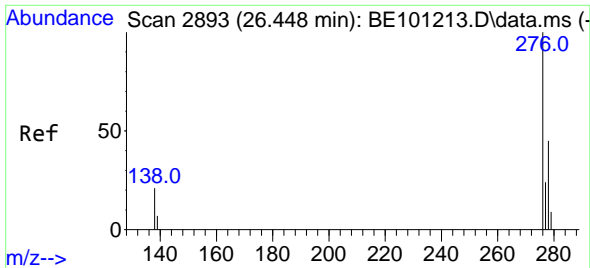
#34
 Bis(2-ethylhexyl)phthalate
 Concen: 0.29 ng
 RT: 21.282 min Scan# 1598
 Delta R.T. 0.001 min
 Lab File: BE101248.D
 Acq: 8 Apr 2021 16:11



Tgt Ion: 149 Resp: 19401

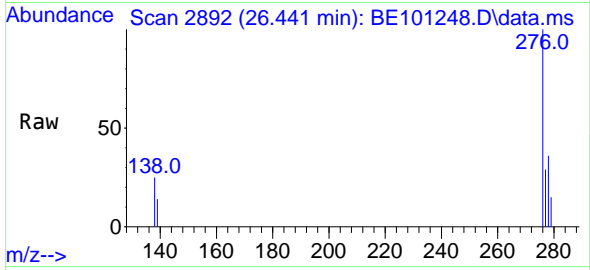
Ion	Ratio	Lower	Upper
149	100		
167	6.8	5.5	8.3
279	1.4	1.0	1.4





#35
 Indeno(1,2,3-cd)pyrene
 Concen: 0.05 ng
 RT: 26.441 min Scan# 2892
 Delta R.T. -0.004 min
 Lab File: BE101248.D
 Acq: 8 Apr 2021 16:11

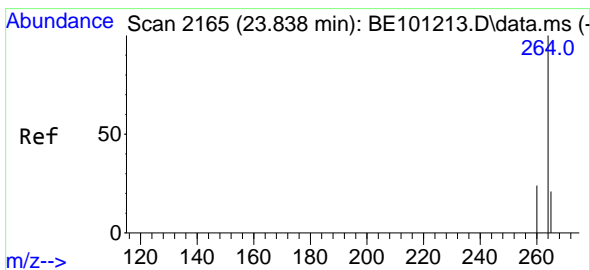
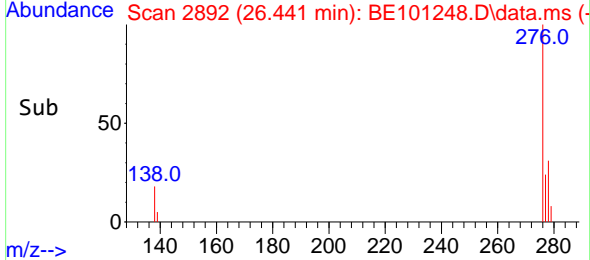
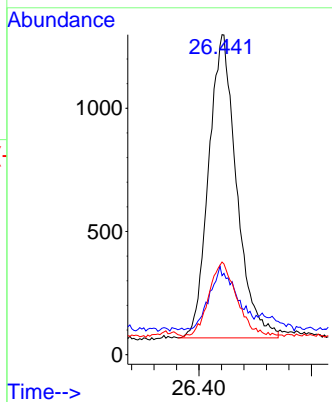
Instrument :
 BNA_E
ClientSampled :
 GWBR1-175-200-040721



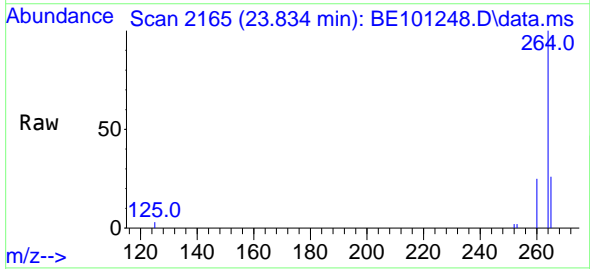
Tgt Ion: 276 Resp: 4251

Ion	Ratio	Lower	Upper
276	100		
138	19.5	17.4	26.0
277	24.7	19.8	29.8

Manual Integrations
APPROVED
 mohammad
 4/9/2021 11:19:26 AM

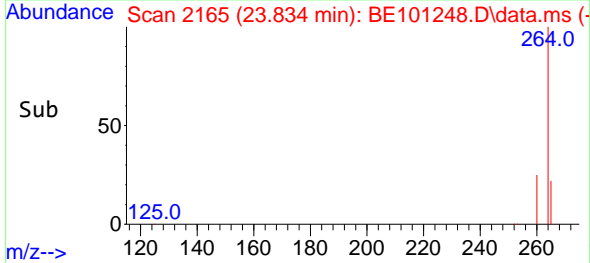
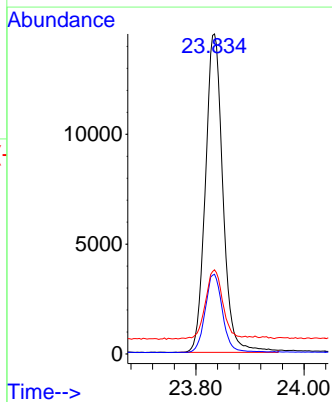


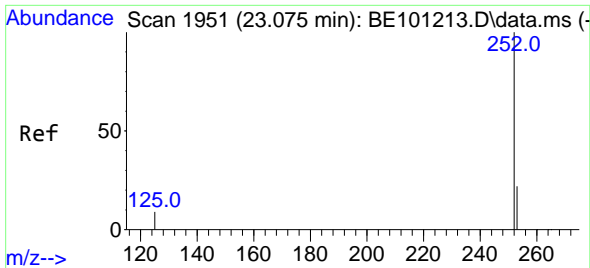
#36
 Perylene-d12
 Concen: 0.40 ng
 RT: 23.834 min Scan# 2165
 Delta R.T. -0.000 min
 Lab File: BE101248.D
 Acq: 8 Apr 2021 16:11



Tgt Ion: 264 Resp: 32632

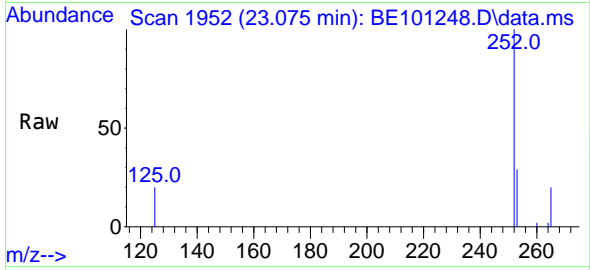
Ion	Ratio	Lower	Upper
264	100		
260	24.9	19.3	28.9
265	26.3	22.4	33.6





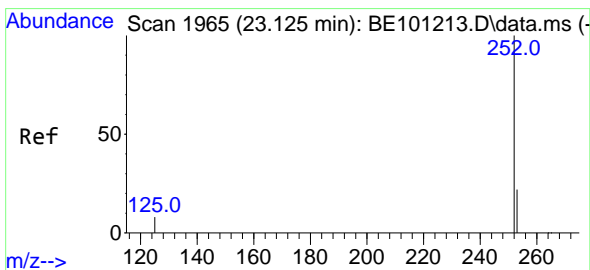
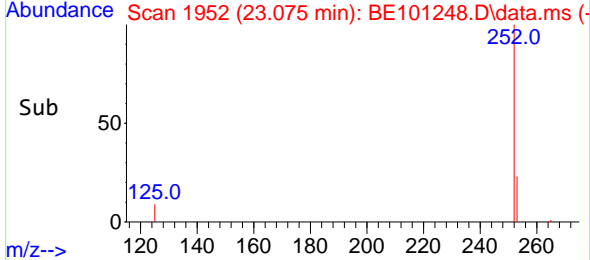
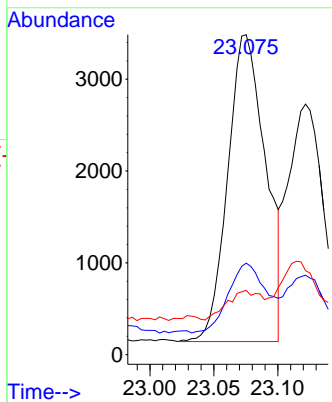
#37
 Benzo(b)fluoranthene
 Concen: 0.06 ng
 RT: 23.075 min Scan# 1952
 Delta R.T. -0.000 min
 Lab File: BE101248.D
 Acq: 8 Apr 2021 16:11

Instrument :
 BNA_E
ClientSampled :
 GWBR1-175-200-040721

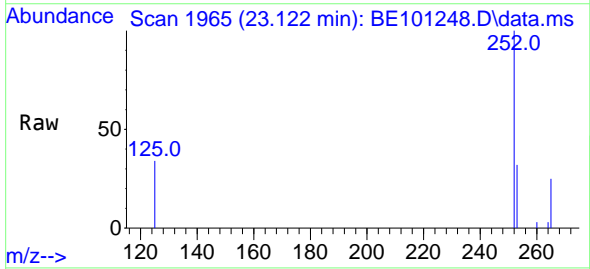


Tgt Ion:252 Resp: 6893
 Ion Ratio Lower Upper
 252 100
 253 28.6 18.1 27.1#
 125 20.1 7.6 11.4#

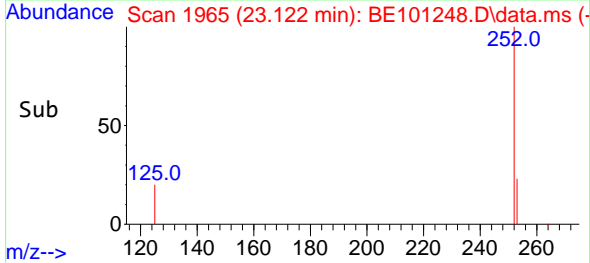
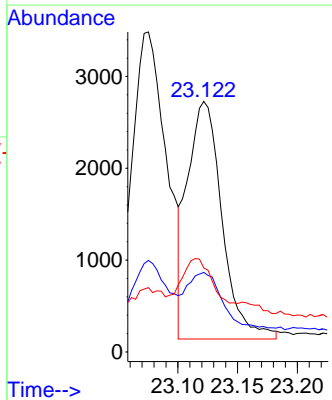
Manual Integrations
APPROVED
 mohammad
 4/9/2021 11:19:26 AM

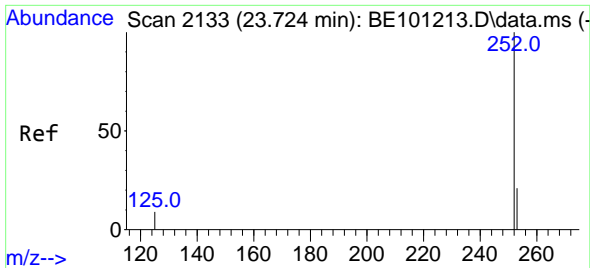


#38
 Benzo(k)fluoranthene
 Concen: 0.04 ng m
 RT: 23.122 min Scan# 1965
 Delta R.T. -0.004 min
 Lab File: BE101248.D
 Acq: 8 Apr 2021 16:11



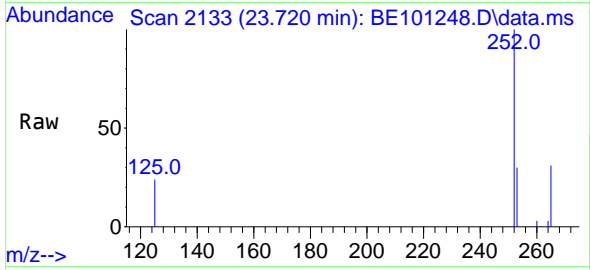
Tgt Ion:252 Resp: 5206
 Ion Ratio Lower Upper
 252 100
 253 31.7 17.8 26.6#
 125 33.5 7.6 11.4#





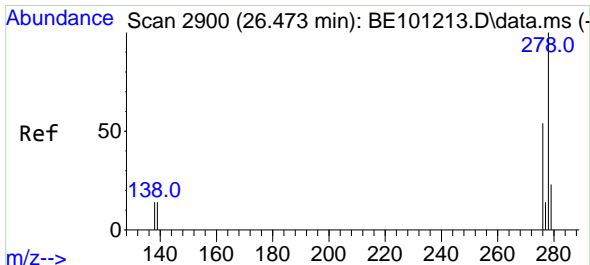
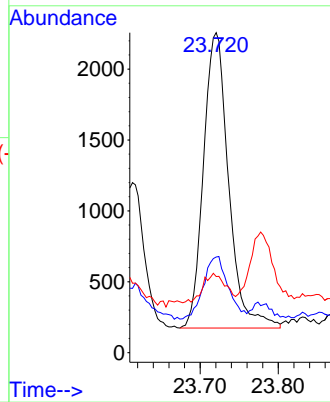
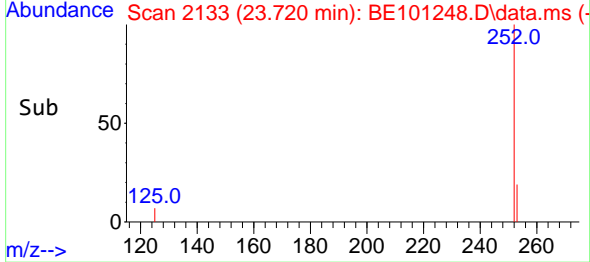
#39
 Benzo(a)pyrene
 Concen: 0.05 ng
 RT: 23.720 min Scan# 2133
 Delta R.T. -0.004 min
 Lab File: BE101248.D
 Acq: 8 Apr 2021 16:11

Instrument :
 BNA_E
 ClientSampleId :
 GWBR1-175-200-040721

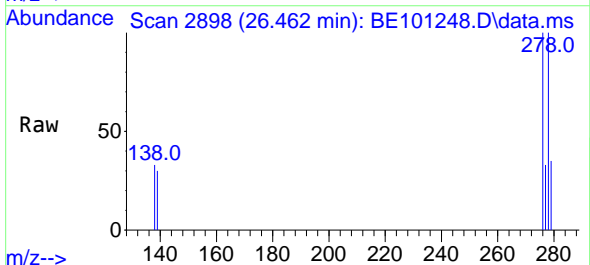


Tgt Ion:252 Resp: 4653
 Ion Ratio Lower Upper
 252 100
 253 29.9 18.0 27.0#
 125 23.8 8.0 12.0#

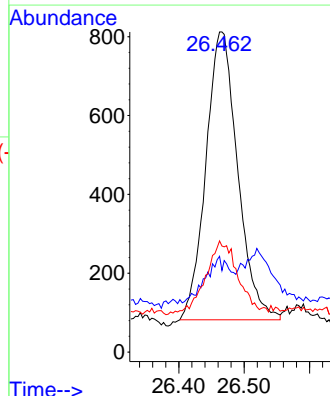
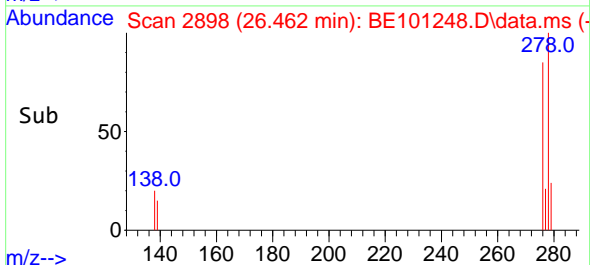
Manual Integrations
 APPROVED
 mohammad
 4/9/2021 11:19:26 AM

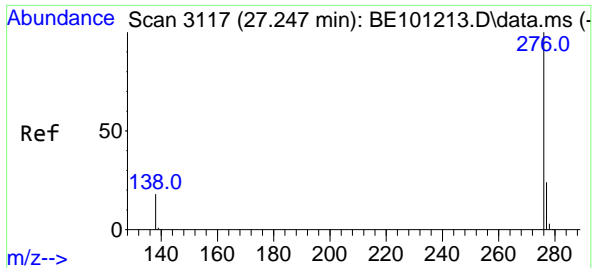


#40
 Dibenzo(a,h)anthracene
 Concen: 0.03 ng
 RT: 26.462 min Scan# 2898
 Delta R.T. -0.011 min
 Lab File: BE101248.D
 Acq: 8 Apr 2021 16:11



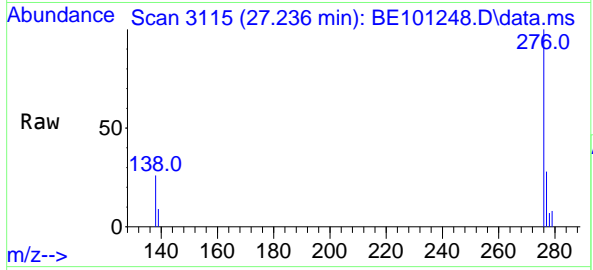
Tgt Ion:278 Resp: 2471
 Ion Ratio Lower Upper
 278 100
 139 29.9 12.2 18.2#
 279 34.7 19.3 28.9#





#41
 Benzo(g,h,i)perylene
 Concen: 0.04 ng
 RT: 27.236 min Scan# 3115
 Delta R.T. -0.007 min
 Lab File: BE101248.D
 Acq: 8 Apr 2021 16:11

Instrument :
 BNA_E
ClientSampled :
 GWBR1-175-200-040721



Tgt Ion: 276 Resp: 4252

Ion	Ratio	Lower	Upper
276	100		
277	28.4	19.4	29.0
138	25.6	15.2	22.8#

Manual Integrations
APPROVED
 mohammad
 4/9/2021 11:19:26 AM

