

Data Path : Z:\SVOASRV\HPCHEM1\BNA E\DATA\BE061419\
 Data File : BE100028.D
 Acq On : 14 Jun 2019 18:09
 Operator : JU/SJ
 Sample : K3284-11
 Misc :
 ALS Vial : 3 Sample Multiplier: 1

Instrument :
 BNA_E
 ClientSampleId :
 BPS1-TT-MW308S-20190609

Quant Time: Jun 15 01:52:14 2019
 Quant Method : Z:\SVOASRV\HPCHEM1\BNA E\METHODS\8270-SIM-BE061019.M
 Quant Title : ASP BNA STANDARDS FOR 5 POINT CALIBRATION
 QLast Update : Mon Jun 10 14:57:20 2019
 Response via : Initial Calibration

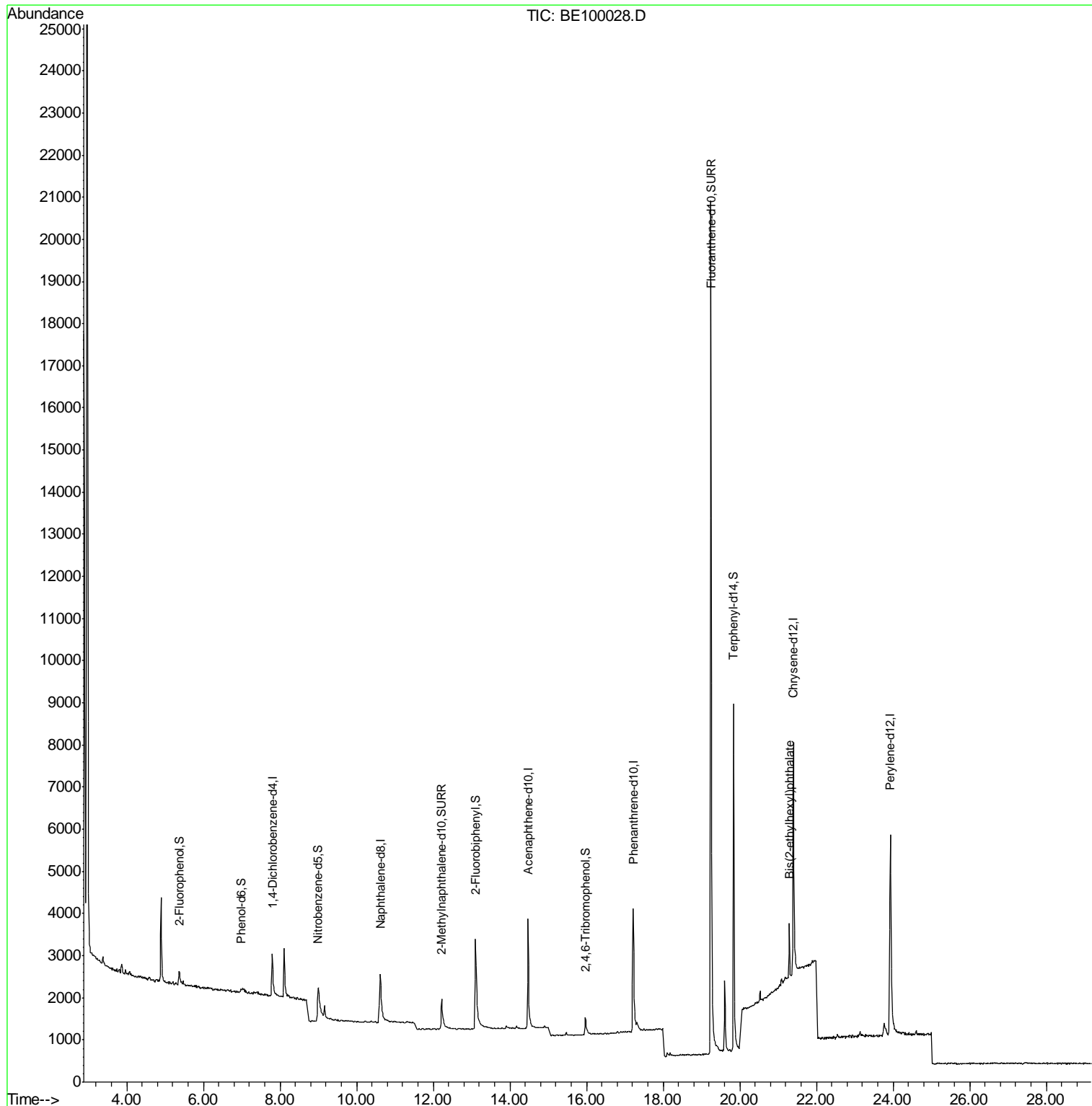
Internal Standards	R.T.	QIon	Response	Conc	Units	Dev(Min)
1) 1,4-Dichlorobenzene-d4	7.79	152	785	0.40	ng	0.00
7) Naphthalene-d8	10.61	136	2755	0.40	ng	0.01
13) Acenaphthene-d10	14.47	164	2156	0.40	ng	0.00
19) Phenanthrene-d10	17.21	188	5904	0.40	ng	0.00
27) Chrysene-d12	21.40	240	8228	0.40	ng	0.00
34) Perylene-d12	23.93	264	9278	0.40	ng	0.00
System Monitoring Compounds						
4) 2-Fluorophenol	5.36	112	331	0.16	ng	0.01
5) Phenol-d6	6.99	99	227	0.08	ng	0.02
8) Nitrobenzene-d5	8.99	82	1009	0.39	ng	0.03
11) 2-Methylnaphthalene-d10	12.22	152	1865	0.39	ng	0.01
14) 2,4,6-Tribromophenol	15.97	330	525	0.33	ng	0.00
15) 2-Fluorobiphenyl	13.10	172	4038	0.49	ng	0.00
25) Fluoranthene-d10	19.25	212	34568	0.40	ng	0.00
29) Terphenyl-d14	19.84	244	9190	0.62	ng	-0.01
Target Compounds						Qvalue
32) Bis(2-ethylhexyl)phthalate	21.29	149	1573	0.045	ng	98

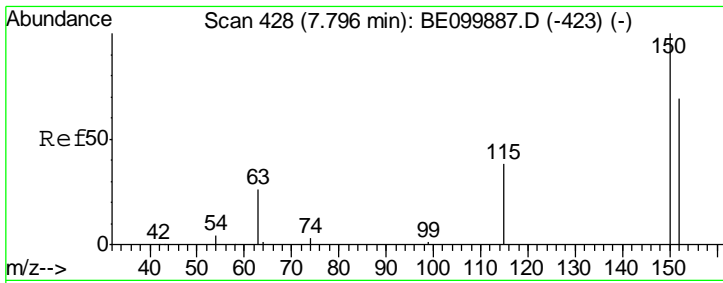
(#) = qualifier out of range (m) = manual integration (+) = signals summed

Data Path : Z:\SVOASRV\HPCHEM1\BNA E\DATA\BE061419\
Data File : BE100028.D
Acq On : 14 Jun 2019 18:09
Operator : JU/SJ
Sample : K3284-11
Misc :
ALS Vial : 3 Sample Multiplier: 1

Instrument :
BNA_E
ClientSampleId :
BPS1-TT-MW308S-20190609

Quant Time: Jun 15 01:52:14 2019
Quant Method : Z:\SVOASRV\HPCHEM1\BNA E\METHODS\8270-SIM-BE061019.M
Quant Title : ASP BNA STANDARDS FOR 5 POINT CALIBRATION
QLast Update : Mon Jun 10 14:57:20 2019
Response via : Initial Calibration

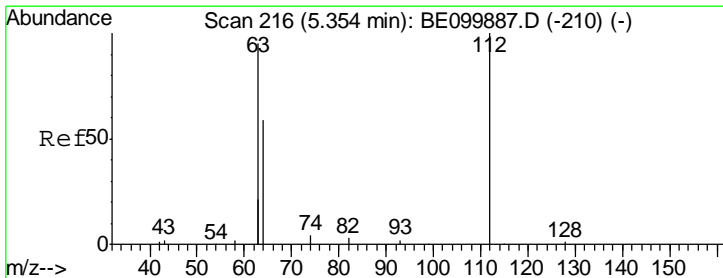
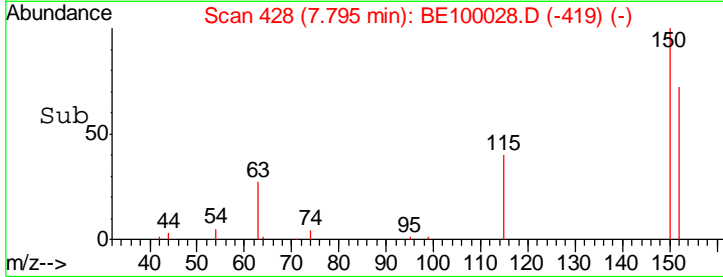
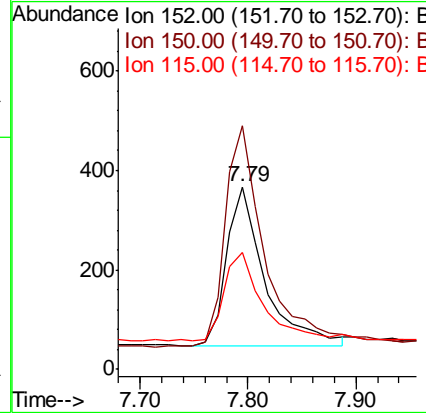
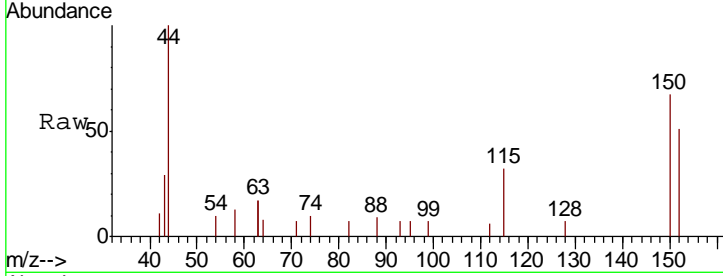




#1
 1,4-Dichlorobenzene-d4
 Concen: 0.400 ng
 RT: 7.79 min Scan# 428
 Delta R.T. -0.00 min
 Lab File: BE100028.D
 Acq: 14 Jun 2019 18:09

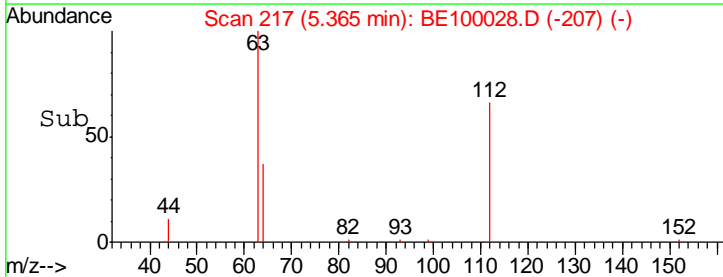
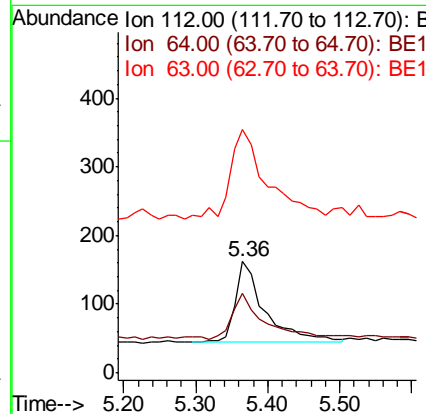
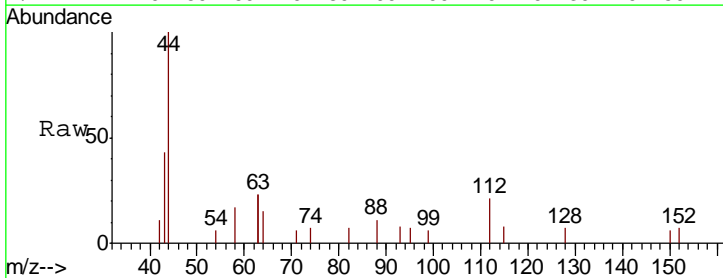
Instrument :
 BNA_E
ClientSampled :
 BPS1-TT-MW308S-20190609

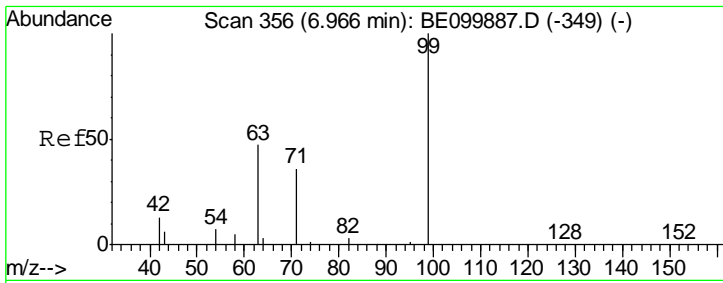
Tgt Ion	Resp	Lower	Upper
152	100		
150	133.5	111.0	166.6
115	63.8	50.7	76.1



#4
 2-Fluorophenol
 Concen: 0.156 ng
 RT: 5.36 min Scan# 217
 Delta R.T. 0.01 min
 Lab File: BE100028.D
 Acq: 14 Jun 2019 18:09

Tgt Ion	Resp	Lower	Upper
112	100		
64	66.2	44.1	66.1#
63	142.0	87.8	131.6#

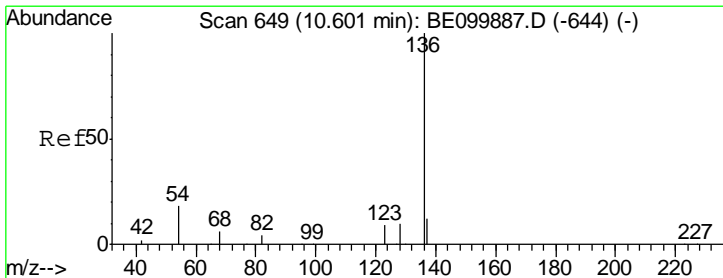
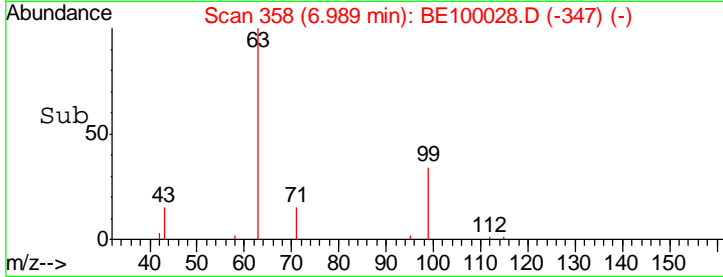
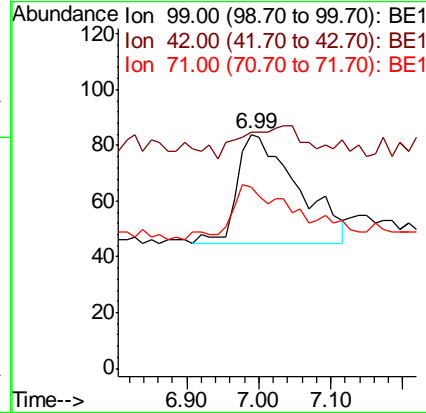
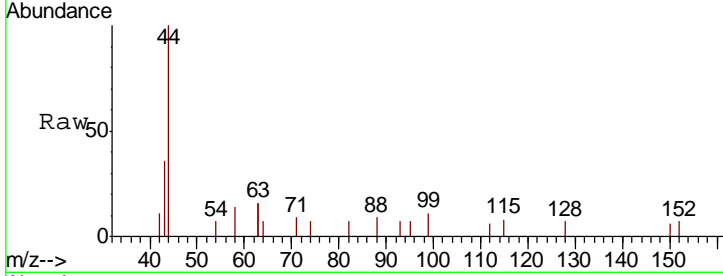




#5
 Phenol-d6
 Concen: 0.083 ng
 RT: 6.99 min Scan# 358
 Delta R.T. 0.02 min
 Lab File: BE100028.D
 Acq: 14 Jun 2019 18:09

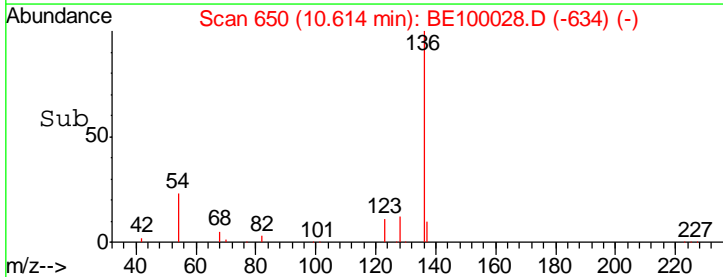
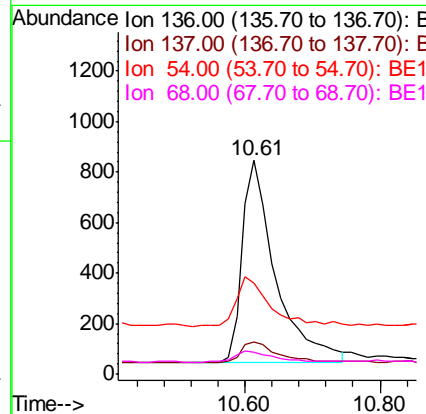
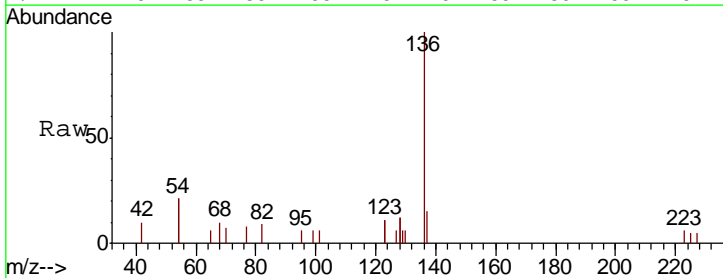
Instrument :
 BNA_E
 ClientSampled :
 BPS1-TT-MW308S-20190609

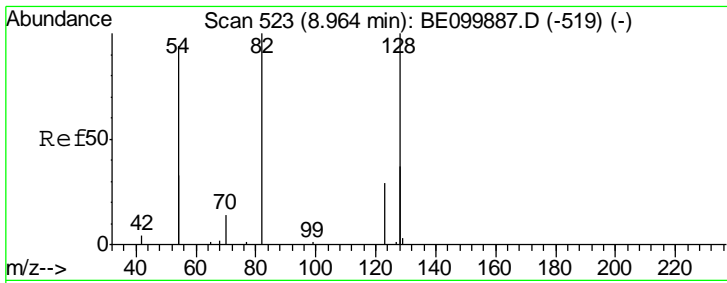
Tgt Ion	Resp	Lower	Upper
99	100		
42	0.0	15.9	23.9#
71	37.9	34.6	52.0



#7
 Naphthalene-d8
 Concen: 0.400 ng
 RT: 10.61 min Scan# 650
 Delta R.T. 0.01 min
 Lab File: BE100028.D
 Acq: 14 Jun 2019 18:09

Tgt Ion	Resp	Lower	Upper
136	100		
137	15.2	12.3	18.5
54	42.8	28.2	42.4#
68	10.4	7.8	11.8

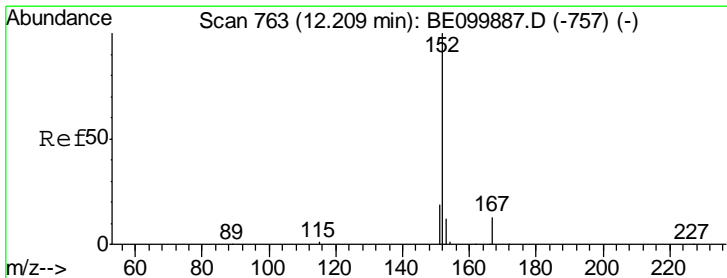
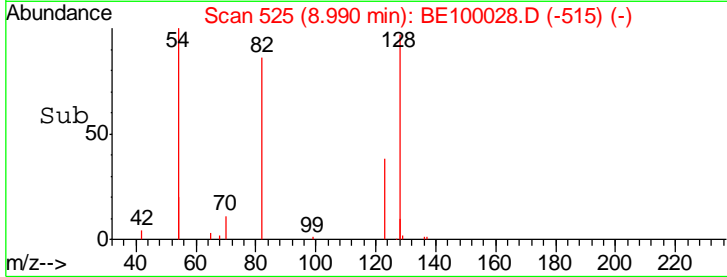
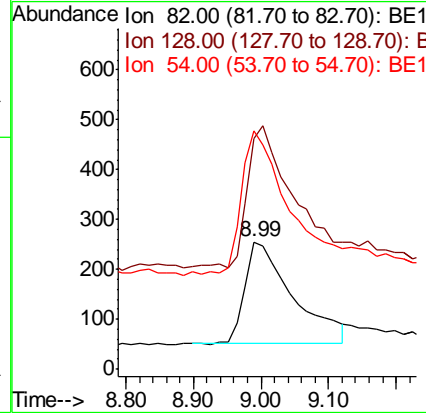
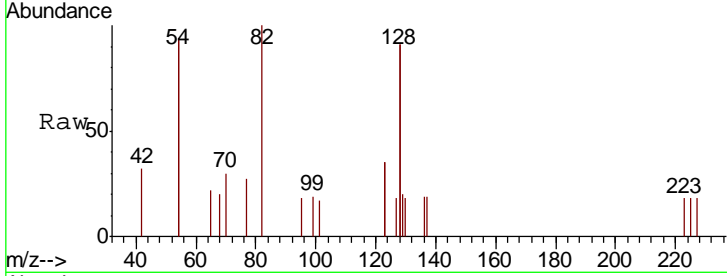




#8
 Nitrobenzene-d5
 Concen: 0.387 ng
 RT: 8.99 min Scan# 525
 Delta R.T. 0.03 min
 Lab File: BE100028.D
 Acq: 14 Jun 2019 18:09

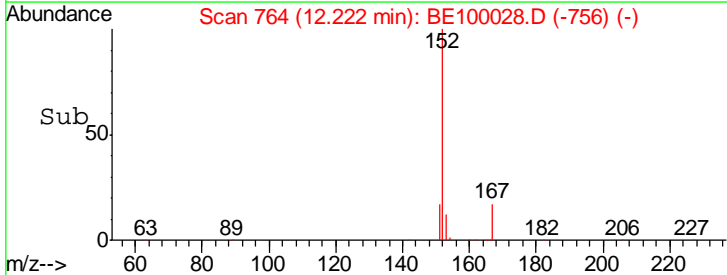
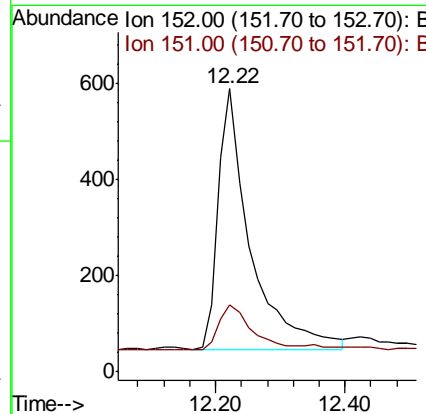
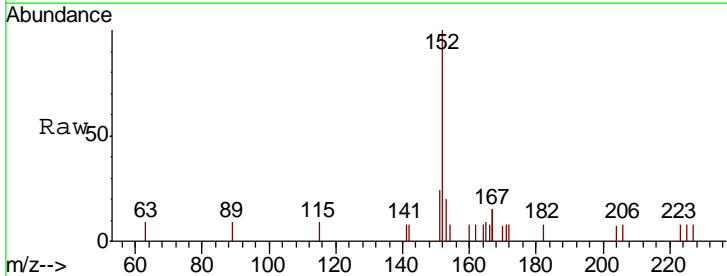
Instrument :
 BNA_E
ClientSampleId :
 BPS1-TT-MW308S-20190609

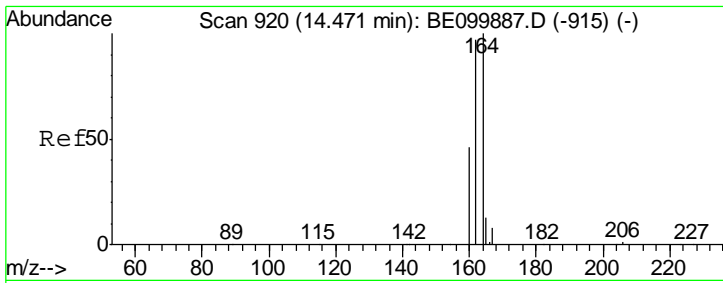
Tgt Ion	Resp	Lower	Upper
82	100		
128	181.2	137.3	205.9
54	187.5	129.7	194.5



#11
 2-Methylnaphthalene-d10
 Concen: 0.388 ng
 RT: 12.22 min Scan# 764
 Delta R.T. 0.01 min
 Lab File: BE100028.D
 Acq: 14 Jun 2019 18:09

Tgt Ion	Resp	Lower	Upper
152	100		
151	18.7	15.2	22.8

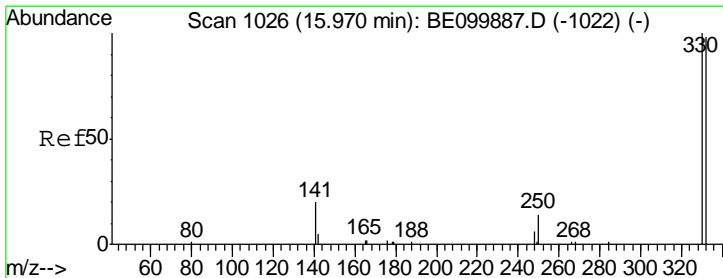
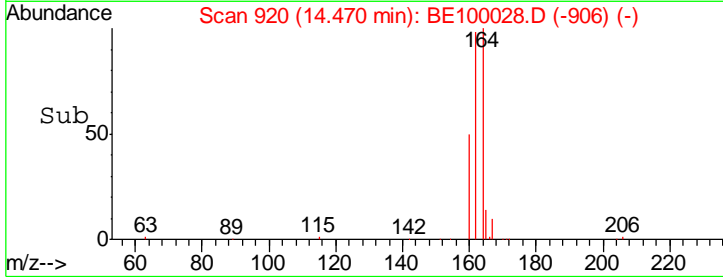
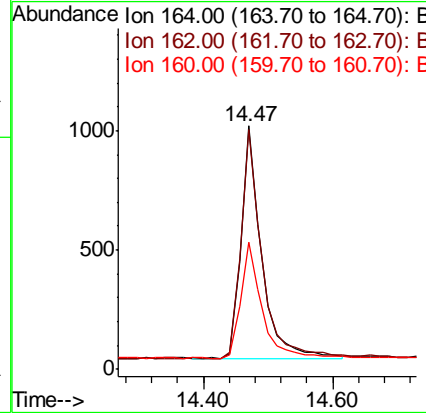
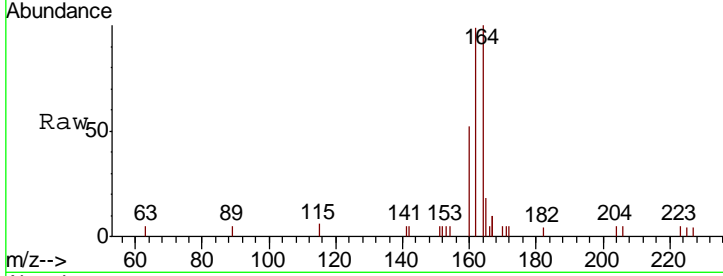




#13
 Acenaphthene-d10
 Concen: 0.400 ng
 RT: 14.47 min Scan# 920
 Delta R.T. -0.00 min
 Lab File: BE100028.D
 Acq: 14 Jun 2019 18:09

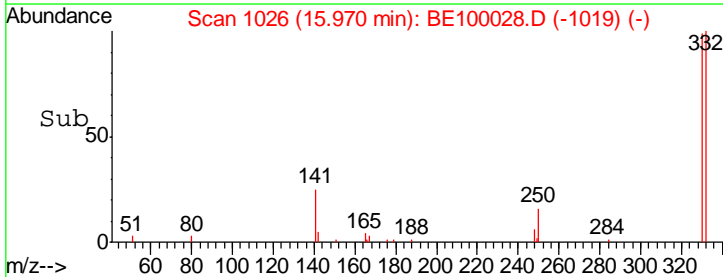
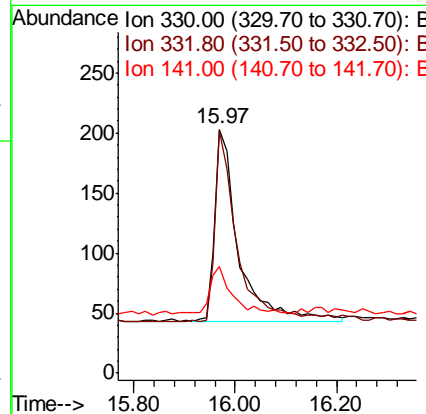
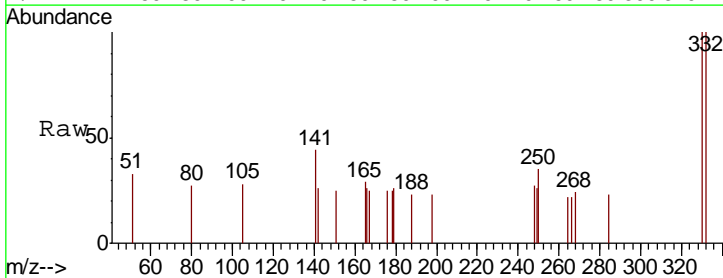
Instrument :
 BNA_E
 ClientSampleId :
 BPS1-TT-MW308S-20190609

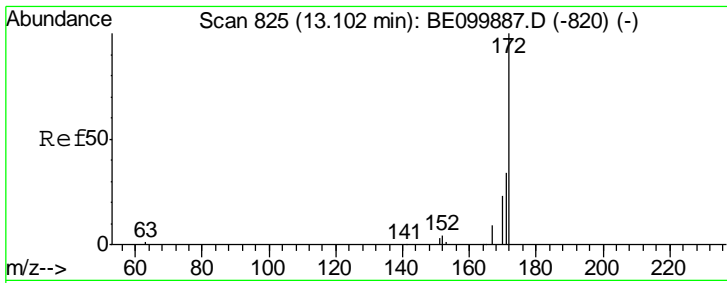
Tgt Ion	Resp	Lower	Upper
164	100		
162	98.5	77.8	116.8
160	52.1	38.2	57.4



#14
 2,4,6-Tribromophenol
 Concen: 0.329 ng
 RT: 15.97 min Scan# 1026
 Delta R.T. -0.00 min
 Lab File: BE100028.D
 Acq: 14 Jun 2019 18:09

Tgt Ion	Resp	Lower	Upper
330	100		
332	90.5	76.7	115.1
141	21.7	21.0	31.6

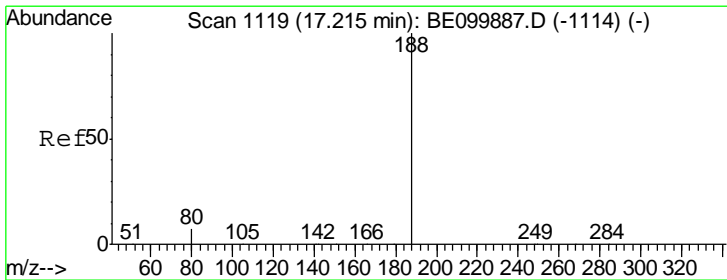
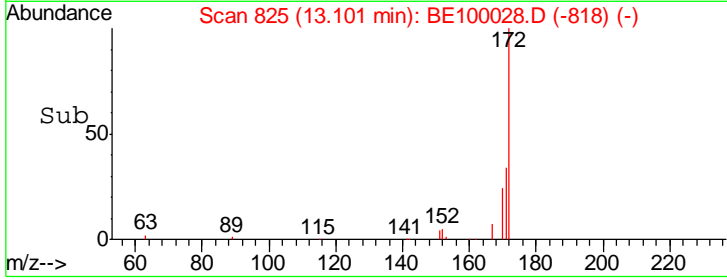
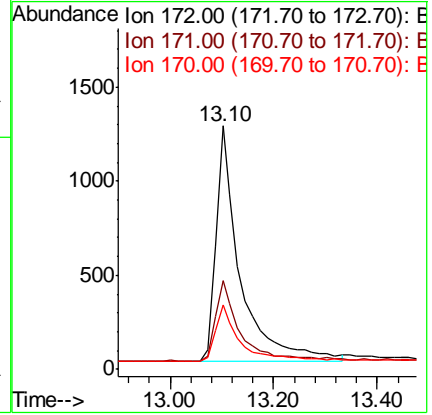
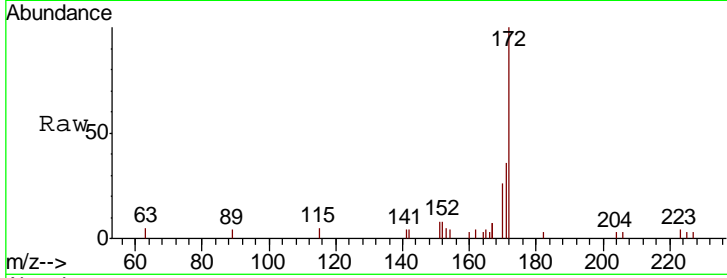




#15
 2-Fluorobiphenyl
 Concen: 0.494 ng
 RT: 13.10 min Scan# 825
 Delta R.T. -0.00 min
 Lab File: BE100028.D
 Acq: 14 Jun 2019 18:09

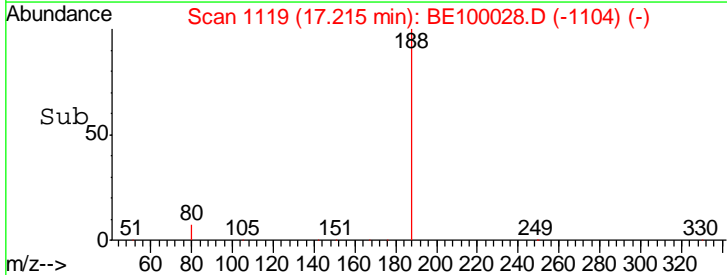
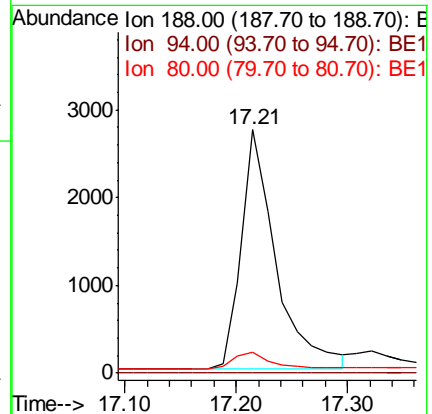
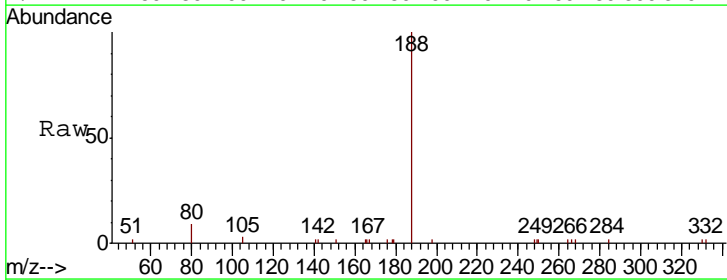
Instrument :
 BNA_E
 ClientSampleId :
 BPS1-TT-MW308S-20190609

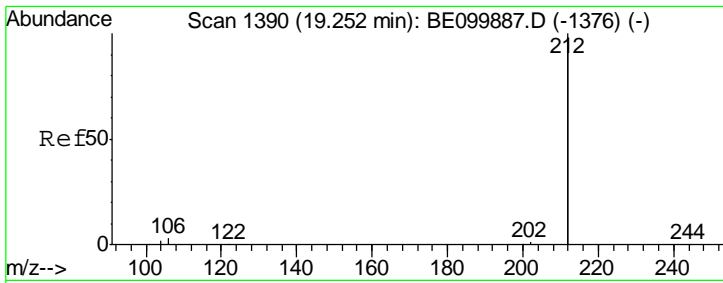
Tgt Ion	Resp	Lower	Upper
172	4038		
171	36.3	29.2	43.8
170	26.4	21.2	31.8



#19
 Phenanthrene-d10
 Concen: 0.400 ng
 RT: 17.21 min Scan# 1119
 Delta R.T. -0.00 min
 Lab File: BE100028.D
 Acq: 14 Jun 2019 18:09

Tgt Ion	Resp	Lower	Upper
188	5904		
94	0.0	0.0	0.0
80	8.6	6.4	9.6



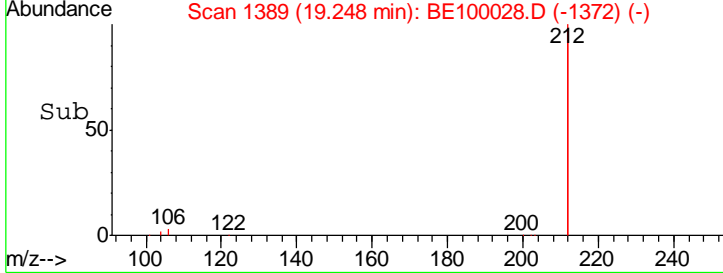
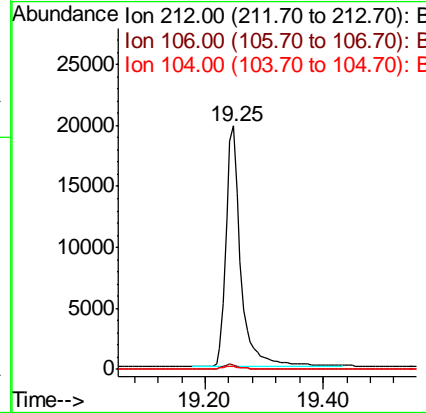
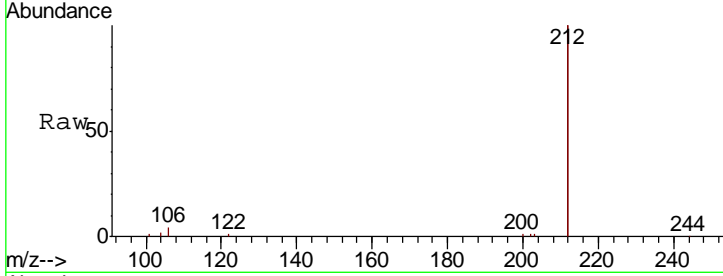


#25
 Fluoranthene-d10
 Concen: 0.402 ng
 RT: 19.25 min Scan# 1389
 Delta R.T. -0.00 min
 Lab File: BE100028.D
 Acq: 14 Jun 2019 18:09

Instrument :
 BNA_E
 ClientSampleId :
 BPS1-TT-MW308S-20190609

Tgt Ion: 212 Resp: 34568

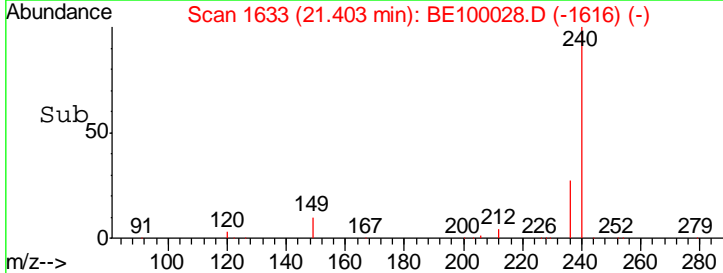
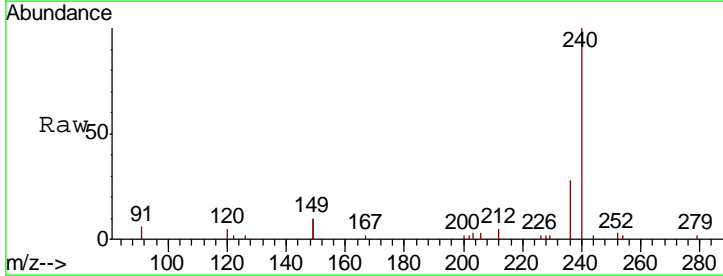
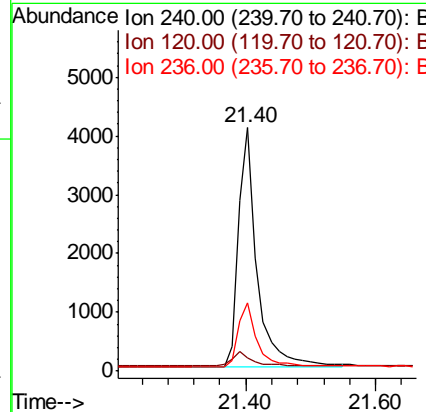
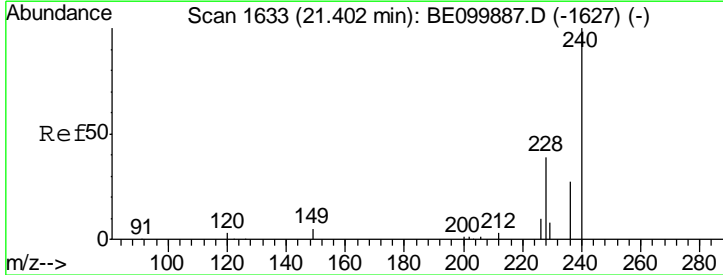
Ion	Ratio	Lower	Upper
212	100		
106	1.7	1.4	2.2
104	1.1	0.9	1.3

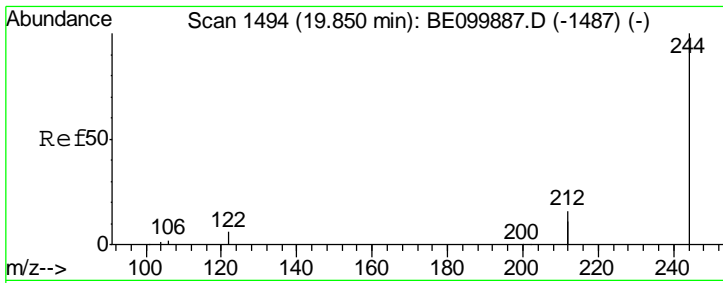


#27
 Chrysene-d12
 Concen: 0.400 ng
 RT: 21.40 min Scan# 1633
 Delta R.T. 0.00 min
 Lab File: BE100028.D
 Acq: 14 Jun 2019 18:09

Tgt Ion: 240 Resp: 8228

Ion	Ratio	Lower	Upper
240	100		
120	5.4	3.8	5.6
236	28.1	22.0	33.0

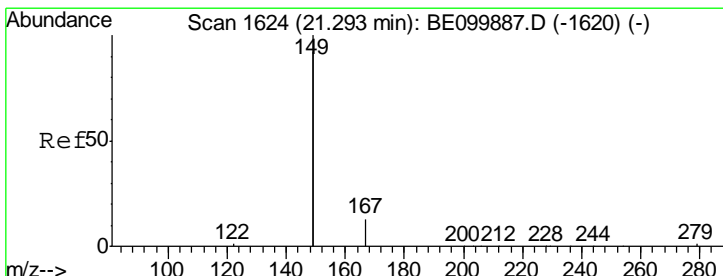
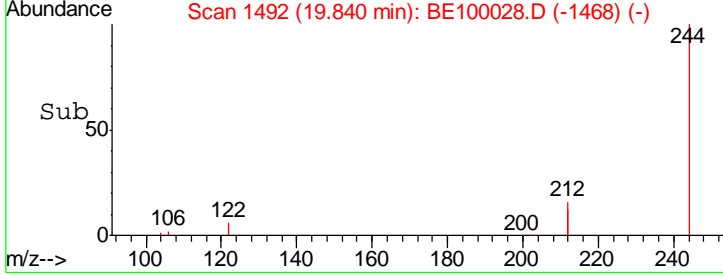
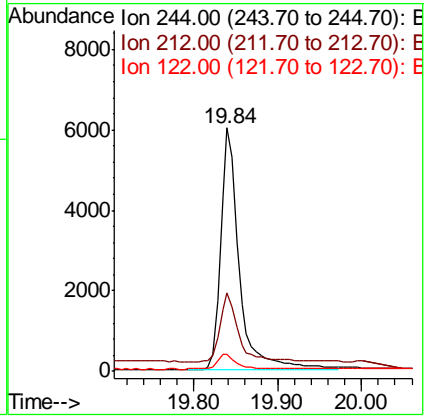
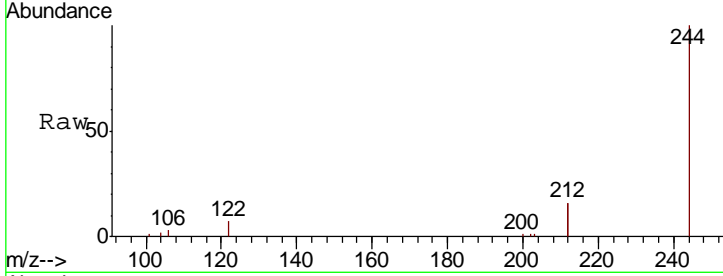




#29
 Terphenyl-d14
 Concen: 0.620 ng
 RT: 19.84 min Scan# 1492
 Delta R.T. -0.01 min
 Lab File: BE100028.D
 Acq: 14 Jun 2019 18:09

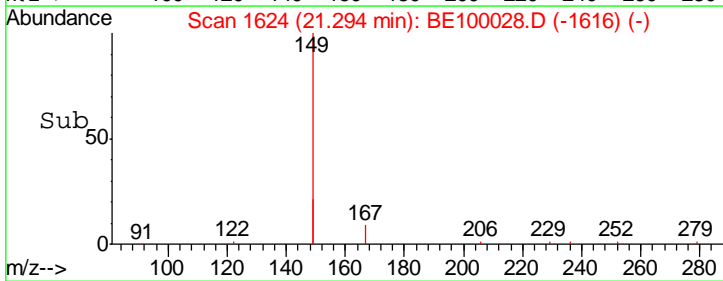
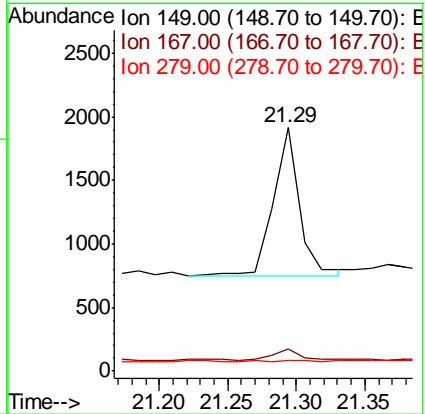
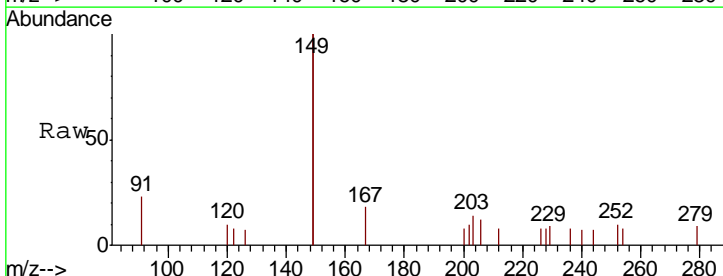
Instrument :
 BNA_E
ClientSampleId :
 BPS1-TT-MW308S-20190609

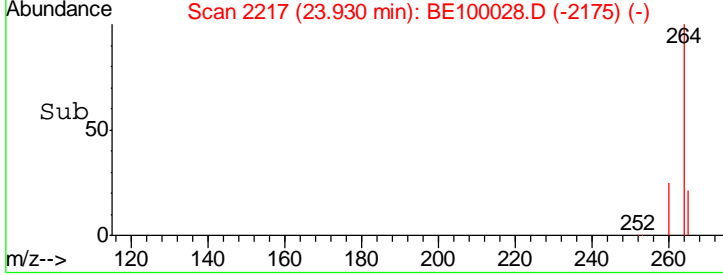
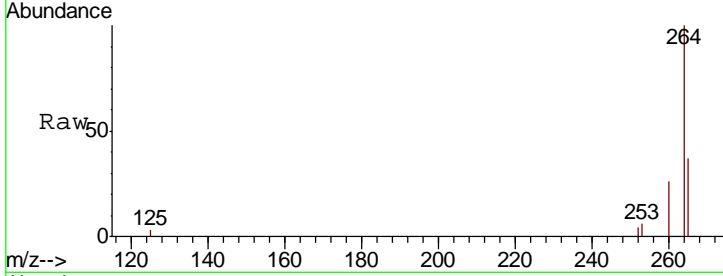
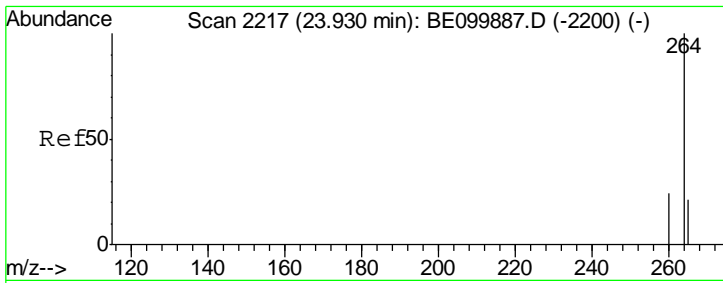
Tgt Ion	Resp	Lower	Upper
244	9190		
212	32.0	25.7	38.5
122	6.9	5.5	8.3



#32
 Bis(2-ethylhexyl)phthalate
 Concen: 0.045 ng
 RT: 21.29 min Scan# 1624
 Delta R.T. 0.00 min
 Lab File: BE100028.D
 Acq: 14 Jun 2019 18:09

Tgt Ion	Resp	Lower	Upper
149	1573		
167	8.1	5.9	8.9
279	1.3	1.2	1.8





#34
 Perylene-d12
 Concen: 0.400 ng
 RT: 23.93 min Scan# 2217
 Delta R.T. -0.00 min
 Lab File: BE100028.D
 Acq: 14 Jun 2019 18:09

Instrument :
 BNA_E
 ClientSampled :
 BPS1-TT-MW308S-20190609

Tot Ion: 264 Resp: 9278

Ion	Ratio	Lower	Upper
264	100		
260	26.2	20.2	30.2
265	36.9	22.0	33.0

